

Actualtests.9L0-415.177 questions

Number: 9L0-415
Passing Score: 800
Time Limit: 120 min
File Version: 5.2



<http://www.gratisexam.com/>

Actualtests

Apple 9L0-415

OS X Support Essentials 10.9

- This exam engine has many good questions. I am feeling great after passing my exam.
- It is a great resource for studying for the exam. It showed me where I was weak and what I needed to study on my own.
- By this you can will be able to determine some troubleshooting techniques which you need to learn as it will help you scenarios on the exam . So I'm pretty happy with it.
- I do know that the practice exam is damn close to the real thing.



I'm sure glad that I used it. Even though I knew the material, the exam questions were worded in a very tricky way. These tests got me over that last hump and I easily passed the written exam.

Exam A

QUESTION 1

Your Mac is started up from its OS X Recovery partition. You need to repair the hard disk. Which procedure will let you perform the repair?

- A. Select Disk Utility in the OS X Utilities window, click Continue, select the hard disk, and click Repair Disk.
- B. In the OS X Utilities window, click Select Volume, click Continue, select the hard disk, and click Verify & Repair.
- C. Quit the Recovery app, then open Disk Utility from the /Applications/Utilities/ folder on the OS X Recovery partition, select the hard disk, and click Repair Disk.
- D. Quit the Recovery app, then open Disk Utility from the /Applications/Utilities/ folder on the Macintosh HD partition, select the hard disk, and click Repair Disk.

Correct Answer: A

Section: (none)

Explanation

Explanation/Reference:

Explanation:

QUESTION 2

Which dynamic service discovery protocol does OS X use to discover devices on a network?

- A. SLP
- B. AppleTalk
- C. Bonjour
- D. DynDNS

Correct Answer: C

Section: (none)

Explanation

Explanation/Reference:

real answer.

QUESTION 3

You upgrade a Snow Leopard Mac that has legacy FileVault encryption to Mountain Lion. If a user forgets his login password, how can you help him regain access to his encrypted home folder?

- A. Log in to the admin user account, open Keychain Access, open the user's login keychain, and then let the user view the account password.
- B. At the Login Window, enter an incorrect password three times in a row. When the "forgot your password" dialog appears, click the Arrow next to Master Password. Enter the master password, and then reset the user account password.

- C. Log in to the admin user account, open Users & Groups preferences, click Reset Password, enter the admin password, and then reset the user account password.
- D. At the Login Window, enter an incorrect password three times in a row. When the "forgot your password" dialog appears, click the Arrow next to Apple ID. Enter the user's Apple ID, and then reset the user account password.

Correct Answer: B

Section: (none)

Explanation

Explanation/Reference:

definite answer.

QUESTION 4

On a Mac running OS X Mountain Lion, how can you display a list of installed software updates?

- A. Open System Information, click System Report, and then in the sidebar under Software, click Installations.
Real 11
Apple 9L0-415 Exam
- B. Open Software Update preferences and click Installed Software.
- C. Open Installer, choose Show Files from the File menu, and then in the Files section under /var/log/, select install.log.
- D. Open Software Update and click Receipts.

Correct Answer: B

Section: (none)

Explanation

Explanation/Reference:

Explanation:

QUESTION 5

Review the screenshot of a portion of the Disk Utility application window, and then answer the question below.



Which statement best describes the selected QUESTION NO: in the screenshot above?

Real 12
Apple 9L0-415 Exam

- A. It is one of three stripes in a RAID set.
- B. It is one of three hard disks in a RAID set.
- C. It is one of three file systems on a partition.
- D. It is one of three partitions on a hard disk.

Correct Answer: D
Section: (none)
Explanation

Explanation/Reference:
Explanation:

QUESTION 6

Which of these must you know about a corporate VPN server before you can configure the VPN software on an OS X computer to access the corporate network?

- A. If the corporate VPN server supports DNSSEC
- B. If the corporate VPN server supports PPPoE
- C. If the corporate VPN server supports PPTP, L2TP over IPsec, or Cisco IPsec
- D. If network protocols will be encapsulated by the corporate VPN server

Correct Answer: C
Section: (none)
Explanation

Explanation/Reference:
Explanation:

QUESTION 7

How do you start up an OS X Mountain Lion computer in Safe Mode?

Real 13
Apple 9L0-415 Exam



<http://www.gratisexam.com/>

- A. Hold down Shift during startup.
- B. Open Terminal, type `safe_boot`, press Return, and then restart the Mac.
- C. Hold down Command-Option-P-R during startup.
- D. Start up from the OS X Recovery partition, and then choose Safe Boot from the Startup Disk menu.

Correct Answer: A

Section: (none)

Explanation

Explanation/Reference:

Explanation:

QUESTION 8

An OS X Mountain Lion computer is connected to both an Ethernet and a Wi-Fi network. How can you specify which interface the Mac will use to access the Internet?

- A. Use Internet Connect to select the preferred interface, and disable the other interface(s).
- B. Enter a DNS configuration for the preferred interface, and delete the DNS configuration for the other interface(s).
- C. Assign a public IP address to the preferred interface, and a private IP address to the other interface(s).
- D. Use the Set Service Order action to move the preferred interface to the top of the Service Order list.

Correct Answer: D

Section: (none)

Explanation

Explanation/Reference:

Explanation:

QUESTION 9

Review the screenshot, and then answer the question below.

Real 14
Apple 9L0-415 Exam



If you change the folder privilege for "everyone" to Read & Write, Finder, by default, will change the permissions of items inside the folder to match.

- A. True
- B. False

Correct Answer: B

Section: (none)

Explanation

Explanation/Reference:

Explanation:

QUESTION 10

Real 15

Apple 9L0-415 Exam

When a user logs in, which task is NOT performed by the user's loginwindow or launchd processes?

- A. Configure input device and system settings according to System Preferences.
- B. Launch items in /Library/LaunchDaemons.
- C. Launch Login Items specified in Users & Groups preferences.
- D. Launch Dock and Finder.

Correct Answer: B

Section: (none)

Explanation

Explanation/Reference:

absolute answer.

QUESTION 11

Which folder contains instructions for the launchd process to start certain items when a user logs in to an OS X Mountain Lion computer?

- A. /etc/launchd/
- B. /Library/LaunchAgents/
- C. /var/run/launchd/
- D. /Library/Extensions/

Correct Answer: B

Section: (none)

Explanation

Explanation/Reference:

Explanation:

Real 16
Apple 9L0-415 Exam

QUESTION 12

In OS X Mountain Lion, Safe Boot _____.

- A. increases data security by modifying Sharing settings, so only essential protocols are enabled at startup
- B. facilitates troubleshooting by preventing loading of third-party components in the operating system at startup
- C. increases data security by assigning all standard users Read-only privileges to mounted local volumes
- D. prevents users from accessing sensitive system files by loading Simple Finder instead of Finder at startup

Correct Answer: B

Section: (none)

Explanation

Explanation/Reference:

Explanation:

QUESTION 13

In OS X Mountain Lion, Safe Boot _____.

- A. increases data security by modifying Sharing settings, so only essential protocols are enabled at startup
- B. facilitates troubleshooting by preventing loading of third-party components in the operating system at startup
- C. increases data security by assigning all standard users Read-only privileges to mounted local volumes
- D. prevents users from accessing sensitive system files by loading Simple Finder instead of Finder at startup

Correct Answer: B

Section: (none)

Explanation

Explanation/Reference:

valid answer.

QUESTION 14

How can you find out which application the Finder will use to open a specific document?

- A. Select the document icon in the Finder, choose Get Info from the File menu, and click the disclosure triangle next to "Open with" in the Info window to reveal the selected application in the pop-up menu.
- B. Select the document icon in the Finder, and choose Show Default Application from the File menu.
Real 17
Apple 9L0-415 Exam
- C. Control-click the document icon in the Finder, and choose Show Application from the shortcut menu.
- D. Select the document icon in the Finder, choose Show Inspector from the File menu, click Application Bindings in the Inspector window, and scroll to locate the selected application in the pop-up menu.

Correct Answer: A

Section: (none)

Explanation

Explanation/Reference:

Explanation:

QUESTION 15

Which statement about Gatekeeper is TRUE?

- A. Only the root user can disable Gatekeeper.
- B. Standard users can bypass Gatekeeper.
- C. Gatekeeper can ONLY be disabled using a configuration profile.
- D. Only administrator users can bypass Gatekeeper.

Correct Answer: D

Section: (none)

Explanation

Explanation/Reference:

answer is updated.

QUESTION 16

Which statement is TRUE of file and folder permissions in the Finder in OS X Mountain Lion?

- A. A user with Read-only permissions to a folder CANNOT rename any files in that folder.
- B. A user with Write-only permissions to a folder can rename any file in that folder.
- C. A user with Read-only permissions to a folder CANNOT view any files in that folder.
- D. A user with Write-only permissions to a folder can delete any file in that folder.

Correct Answer: A

Section: (none)

Explanation

Explanation/Reference:

Explanation:

QUESTION 17

Review the screenshot, and then answer the question below.

Real 23

Apple 9L0-415 Exam



While attempting to reinstall OS X Mountain Lion in Recovery mode, you get the error message shown above. Your Mac is physically connected to an Ethernet network. Which tool can you use to diagnose the problem further?

- A. Internet Connect
- B. Network Preferences
- C. Network Diagnostics

D. Network Utility

Correct Answer: C

Section: (none)

Explanation

Explanation/Reference:

Explanation:

QUESTION 18

What is the role of the launchd process in the startup of an OS X Mountain Lion computer?

- A. The kernel starts launchd, then launchd starts all the other processes involved in startup.
- B. The init process starts launchd, then launchd starts the items stored in the StartupItems folder.
- C. launchd starts the init process, then init starts all the other processes involved in startup.
- D. The init process starts launchd, then launchd starts the scripts stored in /etc/chron/.

Real 24

Apple 9L0-415 Exam

Correct Answer: A

Section: (none)

Explanation

Explanation/Reference:

Explanation:

QUESTION 19

If you use the Get Info window to change Sharing & Permissions settings on a file or folder, Finder preserves and can revert to the previous settings until the window is closed.

- A. True
- B. False

Correct Answer: A

Section: (none)

Explanation

Explanation/Reference:

right answer.

QUESTION 20

If you did not store the recovery key with Apple, and you lose the FileVault-enabled account passwords AND the recovery key, there is no way to recover user data on a FileVault-encrypted volume.

- A. True
- B. False

Correct Answer: A

Section: (none)

Explanation

Explanation/Reference:

Explanation:

QUESTION 21

Why might you prefer to shut down and then start up a Mac you are troubleshooting, rather than simply selecting Restart from the Apple menu?

- A. Because OS X loads a clean user session on startup only after a shutdown.
- B. Because OS X archives errors from the session to the log only during a shutdown.
- C. Because OS X performs disk checks on startup only after a shutdown.
- D. Because the Mac does a full POST on startup only after a shutdown.

Correct Answer: D

Section: (none)

Explanation

Explanation/Reference:

Explanation:

QUESTION 22

You have configured several network locations on your OS X Mountain Lion computer. How can you change from one location to another?

- A. In Network preferences, click Advanced, click Manage Locations, and then select a network location.
Real 27
Apple 9L0-415 Exam
- B. Choose a network location from the Network Locations Input menu on the right side of the Finder menu bar.
- C. Choose Location from the Apple menu, and then choose a network location from the submenu.
- D. In Network preferences, choose Manage Locations from the Action pop-up menu below the Interfaces list, and select a network location.

Correct Answer: D

Section: (none)

Explanation

Explanation/Reference:

Explanation:

QUESTION 23

Which IP address could a Mac assign to itself if no DHCP services were available on the network?

- A. 192.168.100.100
- B. 169.254.100.100
- C. 172.16.100.100
- D. 127.0.0.1

Correct Answer: B

Section: (none)

Explanation

Explanation/Reference:

Explanation:

QUESTION 24

Which folder contains items that instruct the launchd process what to launch during OS X Mountain Lion startup?

- A. /System/Library/LaunchDaemons/
- B. /var/run/launchd/
- C. /etc/launchd/
- D. /Library/Extensions/

Correct Answer: A

Section: (none)

Explanation

Explanation/Reference:

Explanation:

QUESTION 25

On your OS X Mountain Lion computer, you want the Finder to display filename extensions by default. How can you configure this setting from the Finder?

Real 28
Apple 9L0-415 Exam

- A. Choose Preferences from the Finder menu, click Advanced, and select the option "Show all filename extensions."
- B. Control-click anywhere on the Desktop, select Preferences from the pop-up menu, click Advanced, and select the option "Show all filename extensions."
- C. Choose Show View Options from the View menu, and select the option "Show all filename extensions."
- D. Select any file icon, and choose Get Info from the File menu. In the Info window, click the disclosure triangle next to Name & Extension, deselect the option "Hide extension," and click Change All.

Correct Answer: A

Section: (none)

Explanation

Explanation/Reference:

fine answer.

QUESTION 26

Which steps will let you retrieve a file from a Time Machine backup on an external hard disk connected to your Mac?

- A. Open Time Machine, use the timeline to reach the appropriate date and time, select the file, and click Restore.
- B. In the Finder enter a search term in the Spotlight search field, click the Add (+) button to add a search criterion, and choose Search Time Machine, then use the timeline to reach the appropriate date and time, select the file, and click Restore.
- C. Open System Preferences, click the Time Machine icon, click Retrieve, use the timeline to reach the appropriate date and time, select the file, and click Restore.
- D. Control-click the icon of the folder in which you want the restored file to appear, open Time Machine from the shortcut menu, choose Restore from the Time Machine menu, use the timeline to reach the appropriate date and time, select the file, and click Restore.

Correct Answer: A

Section: (none)

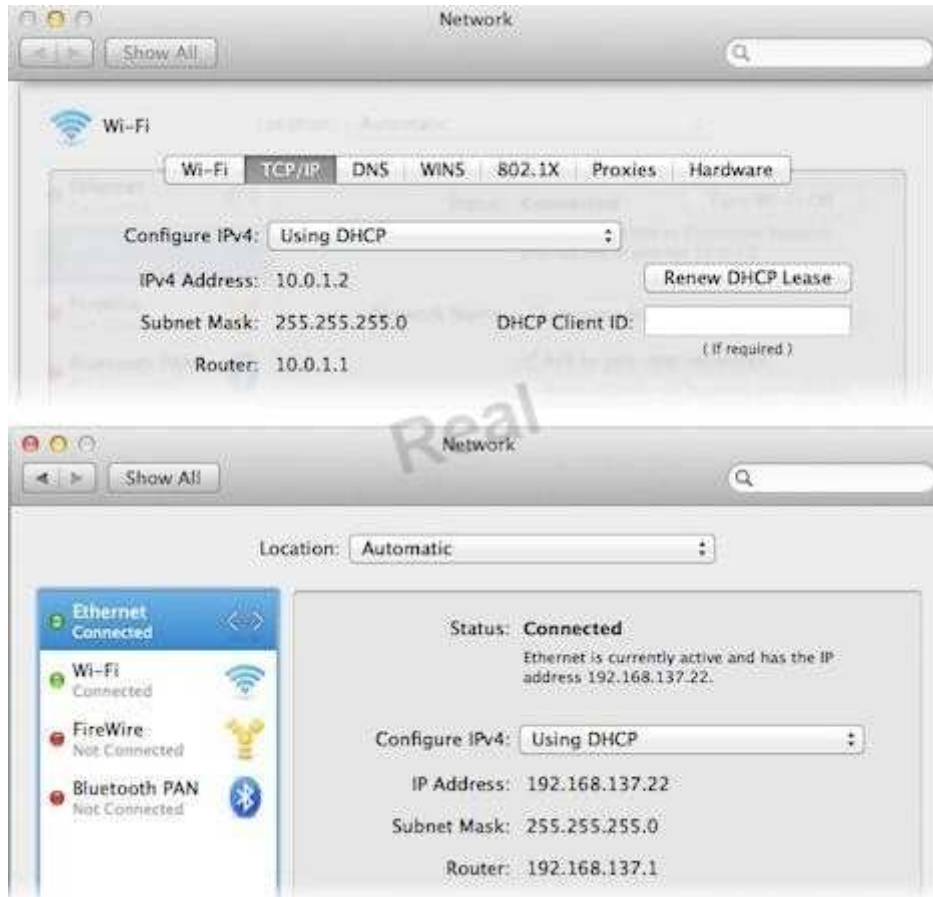
Explanation

Explanation/Reference:

Explanation:

QUESTION 27

Review the screenshots of a Mac computer's Network pane, and then answer the question below.



If a Mac with the network configuration shown above needs to initiate a connection to a server at address 17.20.8.9, which interface will it use to do so?

- A. Neither interface: this computer cannot communicate with the server at 17.20.8.9.
- B. Wi-Fi
- C. Either interface may be used, based on automatic routing.
- D. Ethernet

Real 30
Apple 9L0-415 Exam

Correct Answer: C

Section: (none)

Explanation

Explanation/Reference:

Explanation:

QUESTION 28

Using the Parental Controls preferences, which restriction can you impose on an account?

- A. Restrict the account to sending emails only to defined email addresses.
- B. Restrict the account to a defined set of the services available from the Sharing pane of System Preferences.
- C. Restrict the account to a defined amount of disk space for the home folder.
- D. Restrict the account to downloading only specified file types, such as text or audio files, from the Internet.

Correct Answer: A

Section: (none)

Explanation

Explanation/Reference:

Explanation:

QUESTION 29

Review the screenshot, and then answer the question below.



While starting up an Intel-based Mac, you see the screen shown above. What does it mean?

- A. The folder that holds all the user home folders cannot be located or accessed.
- B. The computer's firmware cannot locate a valid booter file.
- C. An invalid startup keyboard shortcut is being pressed.

D. The booter is unable to load a valid kernel.

Real 31

Apple 9L0-415 Exam

Correct Answer: D

Section: (none)

Explanation

Explanation/Reference:

Explanation:

QUESTION 30

You have a user account on an OS X Mountain Lion computer that has multiple user accounts. How can you interact with another user's Dropbox folder that has default permissions?

- A. You can see its contents, but you cannot add files to it.
- B. You can neither see its contents nor add files to it.
- C. You cannot see its contents, but you can add files to it.
- D. You can see its contents and you can add files to it.

Correct Answer: C

Section: (none)

Explanation

Explanation/Reference:

properly answered.

QUESTION 31

From your OS X user account that has iCloud enabled, how can you open a TextEdit document that you stored in iCloud?

- A. In Finder, select iCloud > Open from the Go menu, and then select the TextEdit app and the document that you want to open.
- B. From the Applications folder, open the iCloud app, and then select the TextEdit app and document that you want to open.
- C. In TextEdit, choose Open from the File menu, click iCloud, and then select the document that Real 32
Apple 9L0-415 Exam
you want to open.
- D. From the iCloud pane of System Preferences, select the TextEdit app and the document that you want to open.

Correct Answer: C

Section: (none)

Explanation

Explanation/Reference:

Explanation:

QUESTION 32

You want to delete several applications by dragging them to the Trash. What fact should you be aware of?

- A. Some applications install files outside the Applications folder, so dragging an app to the Trash may not remove all of its files.
- B. User data for apps purchased in the Mac App Store will also be deleted when the app is dragged to the Trash.
- C. You must restart the Mac in order to permanently delete applications from the Trash.
- D. Apps purchased in the Mac App Store cannot be dragged to the Trash.

Correct Answer: A

Section: (none)

Explanation

Explanation/Reference:

Explanation:

QUESTION 33

Review the screenshot, and then answer the question below.

Real 33

Apple 9L0-415 Exam



You perform a default installation of OS X Mountain Lion, and create the initial admin account, and accounts for Chris and Pat, as shown above. The Chris account is a member of which group?

- A. chris
- B. workgroup
- C. wheel

D. staff

Correct Answer: D

Section: (none)

Explanation

Explanation/Reference:

Explanation:

QUESTION 34

In OS X, which is a valid method to reset permissions and ACLs on a home folder to their default settings?

- A. Start the computer from the OS X Recovery partition, open Terminal from the Utilities menu, enter resetpassword at the prompt, select the system volume and the user account, and click Reset.
- B. Open Disk Utility from the Utilities folder on the startup volume, select the volume with the home folder, and click Repair Permissions.
- C. Select the user home folder in the Finder, choose Get Info, choose Reset Permissions from the action pop-up menu, and authenticate as the user.
- D. Start the computer from the OS X Recovery partition, select Password Reset from the OS X Utilities window, select the system volume and the user account, and click Reset.

Correct Answer: A

Section: (none)

Explanation

Explanation/Reference:

correct answer.

QUESTION 35

You are unable to connect to a web server from your OS X Mountain Lion computer. How can

Real 35

Apple 9L0-415 Exam

traceroute help you troubleshoot this issue?

- A. Traceroute can determine if the web server is configured correctly.
- B. Traceroute can determine if the DNS server is configured correctly.
- C. Traceroute can determine if the server that the web service is running on has a firewall.
- D. Traceroute can determine if each of the reachable routers between your computer and the web server are responsive.

Correct Answer: D

Section: (none)

Explanation

Explanation/Reference:

Explanation:

QUESTION 36

Review the screenshot and answer the question below.



You downloaded an app using Safari. When you try to open the app, you see the message shown above. What is a possible explanation?

- A. The sandbox into which the app was downloaded by the quarantine system has become corrupted.
- B. The certificate needed to decrypt this app cannot be found in the keychain.
- C. Gatekeeper has recognized that the app was altered after it was signed.
- D. The app was signed using a certificate from an unknown authority.

Correct Answer: D

Section: (none)

Explanation

Explanation/Reference:

Explanation:

Real 36
Apple 9L0-415 Exam

QUESTION 37

Which statement best describes how Time Machine stores files from an OS X Mountain Lion computer, when backing up to a directly connected FireWire hard disk drive?

- A. Each file is saved to the external hard disk once. Files that do not change between backups are represented by hard links to save space.
- B. Each file is saved to the external hard disk once. Files that do not change between backups are represented by symbolic links to save space.
- C. Each file is saved to the external hard disk once. File changes are stored in a database on the external hard disk.
- D. Each file is rewritten to the external hard disk during each backup.

Correct Answer: A

Section: (none)

Explanation

Explanation/Reference:

accurate answer.

QUESTION 38

How do you start up an OS X Mountain Lion computer in single-user mode?

- A. Hold down Shift-Option while the computer restarts.
- B. Hold down Command-S while the computer restarts.
- C. Start up from the Mountain Lion Recovery system partition, and enter the command `reboot - single` in Terminal.
- D. Select Single-User Mode in the Startup Disk pane of System Preferences and restart the computer.

Correct Answer: B

Section: (none)

Explanation

Explanation/Reference:

Explanation:

QUESTION 39

For the Messages app to initiate a screen sharing session between two OS X computers, screen sharing must be enabled in the Sharing preferences on at least one of the two computers.

- A. True
- B. False

Correct Answer: B

Section: (none)

Explanation

Explanation/Reference:

Explanation:

Real 37
Apple 9L0-415 Exam

QUESTION 40

In OS X Mountain Lion, which TWO types of file service hosts can you browse in the Network folder? (Select 2)

- A. WebDAV
- B. FTP
- C. DFS
- D. SMB
- E. AFP

Correct Answer: DE

Section: (none)

Explanation

Explanation/Reference:

Explanation:

QUESTION 41

Improperly unmounting or ejecting a drive or volume may cause data corruption. The system automatically verifies and repairs an improperly unmounted or ejected volume the next time it becomes available to the Mac.

Real 43
Apple 9L0-415 Exam



<http://www.gratisexam.com/>

- A. What types of files are omitted from Time Machine backups?
- B. What role does the system launchd process serve during system startup?
- C. What's required to set up the iCloud Keychain service on multiple Apple devices?
- D. What's the potential side effect of improperly unmounting or ejecting a disk or volume?

Correct Answer: D

Section: (none)

Explanation

Explanation/Reference:

Explanation:

QUESTION 42

OS X uses built-in generic drivers based on each device class. For example, there are generic drivers for scanners and printers that can be used instead of official third-party drivers.

- A. How does network service order affect network connectivity?
- B. How does OS X support third-party devices without needing third-party device drivers?
- C. What are some known issues that arise when connecting to network file services?
- D. How does OS X use dynamic network service discovery protocols to access network services?

Correct Answer: B

Section: (none)

Explanation

Explanation/Reference:

actual answer.

QUESTION 43

How can you limit a user account from having full access to all applications?

- A. Parental Controls can further limit a user account. Examples include enforcing a simple Finder, limiting applications and widgets, limiting Mac App Store content, setting time limits, and content filtering for several applications included in OS X.
- B. The Archive option in the Finder creates compressed zip archive files.
- C. Resource contention occurs when fast user switching is enabled and a user tries to access an item another user already has open in the background. Document contention occurs when a user attempts to open a document another user has already opened. Peripheral contention occurs when a user attempts to access a peripheral already in use by another user's open application. Application contention occurs when the second user attempts to access an application designed to run only once on a system.
- D. By default on OS X, opens Archive Utility, the default application for opening zip archive files. Archive Utility, expands the contents of the zip archive next to the same location as the original zip archive.

Correct Answer: A

Section: (none)

Explanation

Explanation/Reference:

Explanation:

Real 44

Apple 9L0-415 Exam

QUESTION 44

What are the requirements for purchasing applications via the Mac App Store?

- A. The Privacy pane of Security & Privacy preferences can be used to allow or disallow applications' access to Location Services, Contacts, Calendars, Reminders, social network services, and Accessibility application access.
- B. AppleTalk works only with OS X v10.5 or earlier.
- C. The requirements to purchase items from the Mac App Store are OS X v10.6.6 or later, an Apple ID, and an Internet connection.
- D. The master password is used to reset local account passwords.

Correct Answer: C

Section: (none)

Explanation

Explanation/Reference:

Explanation:

QUESTION 45

Which users are allowed to unlock a FileVault 2 protected system?

- A. Any user that's FileVault enabled is allowed to unlock a FileVault 2-protected system. This includes any local or cached network user account that was enabled when FileVault 2 was set up or created after FileVault 2 was enabled. Further, administrators may return to Security & Privacy preferences to enable additional accounts.
- B. Secure Empty Trash will perform a 7-pass erase on the contents of the Trash folder.
- C. All Apple software updates are handled via the Mac App Store.
- D. An item's ownership and permissions can be identified using the Info or Inspector windows in the Finder.

Correct Answer: A

Section: (none)

Explanation

Explanation/Reference:

exact answer.

QUESTION 46

A Safe Boot performs the following permanent actions: attempting to repair the system volume structure, deleting system KEXT caches, and deleting font caches.

- A. How can you acquire the OS X Mavericks installer?
Real 45
Apple 9L0-415 Exam
- B. Where are the keychain files stored?
- C. Which changes are made when OS X Safe Boots?
- D. What does the master password do?

Correct Answer: C

Section: (none)

Explanation

Explanation/Reference:

Explanation:

QUESTION 47

What are PPD files responsible for?

- A. PostScript Printer Description (PPD) files are printer driver files that instruct the CUPS system on how to communicate with specific printer models.
- B. If a client sharing service is compromised, an unauthorized user can control your Mac and execute unwanted applications or processes.
- C. The Finder hides traditional UNIX resources from average users because they don't need to have access to those items. If users need access to these UNIX items, they can access them from Terminal.
- D. Common UNIX Printing System (CUPS) manages all printing for OS X, including both local and shared printing.

Correct Answer: A

Section: (none)

Explanation

Explanation/Reference:

Explanation:

Real 46

Apple 9L0-415 Exam

QUESTION 48

How can you encrypt a disk without losing its contents?

- A. The Archive option in the Finder creates compressed zip archive files.
- B. From the Finder, you can encrypt a disk without losing its contents by secondary (or Control-) clicking the disk and then choosing Encrypt from the shortcut menu.
- C. Though Spotlight indexes file and folder permissions, it allows other users to search the contents of locally attached nonsystem volumes when ownership is ignored on those volumes.
- D. From the "Connect to Server" dialog in the Finder, you can connect to:
 - Apple File Protocol (AFP)
 - Server Message Blocks/Common Internet File System (SMB/CIFS) · SMB2
 - Network File System (NFS)
 - Web-based Distributed Authoring and Versioning (WebDAV) · File Transfer Protocol (FTP) network file services

Correct Answer: B

Section: (none)

Explanation

Explanation/Reference:

appropriate answer.

QUESTION 49

The system version, build number, and hardware serial number are located in the About This Mac dialog or the login screen. The system version number defines the specific version of OS X currently installed. The system build number is an even more specific identifier used primarily by developers. Finally, the hardware serial number is a unique number used to identify your specific Mac.

Real 47

Apple 9L0-415 Exam

- A. How can you reset a user's home folder permissions?
- B. What are the system requirements for using FileVault 2?
- C. Where can you locate the system version number, build number, and serial number? What's the significance of these numbers?
- D. How can you acquire the OS X Mavericks installer?

Correct Answer: C

Section: (none)

Explanation

Explanation/Reference:

Explanation:

QUESTION 50

The OS X Recovery system provides access to Restore System From Time Machine Backup, Install/Reinstall OS X, Get Help Online via Safari, Disk Utility, Startup Disk, Firmware Password Utility, Network Utility, Terminal, and Reset Password.

- A. Which items aren't loaded when OS X Safe Boots?
- B. Which changes are made when OS X Safe Boots?
- C. What does the diagnostic reporting feature do?
- D. What utilities are available when started up from OS X Recovery?

Correct Answer: D

Section: (none)

Explanation

Explanation/Reference:

Explanation:

QUESTION 51

Why would you want to open an application in 32-bit mode?

Real 48

Apple 9L0-415 Exam

- A. Documents saved to iCloud can be managed from the application that was used to create and save the document. iCloud documents don't appear anywhere in the Finder that a user would normally look.
- B. Using the Finder Info window you can force an application to open in 32-bit mode. This step is necessary for a 64-bit application to support older 32-bit plug-ins or application resources.
- C. The master password is used to reset local account passwords.

D. The OS X Mavericks installer can be downloaded from the Mac App Store for free.

Correct Answer: B

Section: (none)

Explanation

Explanation/Reference:

Explanation:

QUESTION 52

How does IPv4 addressing differ from IPv6 addressing?

- A. Most common IP addresses and subnet masks share the same IPv4 formatting. An IPv4 address is a 32-bit number represented in four groups of three-digit numbers, known as octets, separated by periods. Each octet has a value between 0 and 255. An IPv6 address is a 128-bit number that's presented in eight groups of four-digit hexadecimal numbers separated by colons.
This allows for a huge range of addresses, and as a result IPv6 addressing essentially includes subnet information.
- B. If a network device needs to send data to another network device on the same LAN, it addresses the outgoing packets based on the destination device's MAC address.
- C. In Network preferences, all network service interfaces with a green status indicator are being used for network activities. However, again, all network traffic that isn't better handled via a local connection is sent to the primary network service interface. The primary network service interface is the top most active interface in the listing.
- D. OS X sharing services include DVD or CD sharing, Screen Sharing, File Sharing, Printer Sharing, Scanner Sharing, Remote Login, Remote Management (ARD), Apple Events, Internet Sharing, and Bluetooth Sharing.

Correct Answer: A

Section: (none)

Explanation

Explanation/Reference:

perfectly answered.

QUESTION 53

What are some privacy and security concerns with the Spotlight service?

- A. The Spotlight search service creates index databases of file system metadata so that it can perform normally time intensive searches nearly instantly. File system tags can be found in the Finder sidebar, Spotlight search, and any open or save document dialogs.
- B. When fast user switching is enabled, all users are allowed to see other users' locally connected disks.
- C. A user's home folder permissions can be reset from the Reset Password application on OS X Recovery.
- D. Though Spotlight indexes file and folder permissions, it allows other users to search the contents of locally attached nonsystem volumes when ownership is

ignored on those volumes.

Correct Answer: D

Section: (none)

Explanation

Explanation/Reference:

Explanation:

QUESTION 54

The Archive option in the Finder creates compressed zip archive files.

- A. What type of items can be found in a keychain?
- B. What types of files are omitted from Time Machine backups?
- C. What type of file is created by the Finder when you select the Archive option? Real 50
Apple 9L0-415 Exam
- D. What four methods can be used to restore from a Time Machine backup?

Correct Answer: C

Section: (none)

Explanation

Explanation/Reference:

Explanation:

QUESTION 55

The local hidden OS X Recovery HD doesn't include the OS X installation assets. So reinstalling OS X Mavericks from here requires high-speed Internet access and the ability to verify access to the installation assets. Upgraded Mac systems are verified by entering the Apple ID used to purchase OS X Mavericks. Verification is automatic for Mac systems that included OS X Mavericks when purchased new.

- A. What role does the system launched process serve during system startup?
- B. What two methods are used to hide items from the Finder?
- C. What two resources does the local hidden OS X Recovery HD need to reinstall OS X Mavericks?
- D. What three methods can be used to uninstall applications?

Correct Answer: C

Section: (none)

Explanation

Explanation/Reference:

Explanation:

QUESTION 56

What security risk related to storage can occur when fast user switching is enabled?

- A. When a user changes his own account password, the system will keep his login keychain password in sync.
- B. When fast user switching is enabled, all users are allowed to see other users' locally connected disks.
- C. The Archive option in the Finder creates compressed zip archive files.
- D. The Finder hides traditional UNIX resources from average users because they don't need to have access to those items. If users need access to these UNIX items, they can access them from Terminal.

Correct Answer: B

Section: (none)

Explanation

Explanation/Reference:

Explanation:

Real 51

Apple 9L0-415 Exam

QUESTION 57

In Network preferences, all network service interfaces with a green status indicator are being used for network activities. However, again, all network traffic that isn't better handled via a local connection is sent to the primary network service interface. The primary network service interface is the top most active interface in the listing.

- A. How can an OS X system automatically connect to a Wi-Fi network?
- B. Which five network file services can you connect to from the Finder's Connect to Server dialog?
- C. In Network preferences, how can you tell which interface is currently being used for network activities?
- D. How can you verify basic connectivity to another network host?

Correct Answer: C

Section: (none)

Explanation

Explanation/Reference:

Explanation:

QUESTION 58

How can you identify which applications are installed on your Mac?

- A. Three ways to forcibly quit an application from the graphical interface are from the Force Quit Application dialog accessed from the Apple menu; from the Dock application shortcut menu accessed by Control-clicking or right-clicking the application's icon; or from the /Applications/Utilities/ Activity Monitor application.
- B. You can use the System Information application to easily scan all the appropriate application locations and return a list of installed applications.
- C. The Activity Monitor application is used to monitor open processes and applications.
- D. Disk Utility is the primary application for creating and managing disk images.

Correct Answer: B

Section: (none)

Explanation

Explanation/Reference:

Explanation:

QUESTION 59

How do ACLs differ from standard UNIX file system permissions?

- A. An item's ownership and permissions can be identified using the Info or Inspector windows in the Finder.
- B. Standard UNIX file system permissions allow only for permissions to be set for one owner, one group, and all others. ACLs, on the other hand, allow for an essentially unlimited list of permissions entries.
Real 52
Apple 9L0-415 Exam
- C. The Disk Utility Repair Permissions feature repairs only the ownership and permissions for items installed by Apple. However, this may resolve issues with third-party products.
- D. You can use the System Information application to easily scan all the appropriate application locations and return a list of installed applications.

Correct Answer: B

Section: (none)

Explanation

Explanation/Reference:

Explanation:

QUESTION 60

How can you identify duplicate fonts?

- A. The OS X Mavericks installer can be downloaded from the Mac App Store for free.
- B. The Messages application allows for on-demand screen sharing that can be used even when the system screen sharing service isn't enabled.

- C. The Font Book application shows a small dot next to the name of any font that has duplicate resources.
 - D. The four methods used to eject a volume or disk from the Finder are:
 - Drag the disk icon to the Trash in the Dock.
- Real 53
Apple 9L0-415 Exam
- Press and hold the Eject key for a few moments to unmount and eject optical media.
 - Select the volume you want to eject and choose Eject from the File menu.
 - In the Finder sidebar, click the small Eject button next to the volume you want to unmount and eject.

Correct Answer: C

Section: (none)

Explanation

Explanation/Reference:

Explanation:

QUESTION 61

A user's home folder permissions can be reset from the Reset Password application on OS X Recovery.

- A. How can you reset a user's home folder permissions?
- B. How can you limit the use of Location Services?
- C. How can you verify basic connectivity to another network host?
- D. How can you identify duplicate fonts?

Correct Answer: A

Section: (none)

Explanation

Explanation/Reference:

Explanation:

QUESTION 62

Additional Apple devices must be authorized to use the iCloud Keychain service using a combination of the Apple ID password and another method. One method involves using an iCloud Security Code; the other method is to authorize access from another Apple device that has already been configured for the iCloud Keychain service.

- A. What's a profile? How are profiles managed?
- B. What's a network location? Who can access network locations?
- C. What's required to set up the iCloud Keychain service on multiple Apple devices?

D. What's the best source for acquiring printer drivers for OS X?

Correct Answer: C

Section: (none)

Explanation

Explanation/Reference:

Explanation:

QUESTION 63

If an issue disappears when a Safe Boot is successful, you must find and remove the third-party startup resource that caused the issue. The best way to isolate the problem is to start up the Mac in Verbose mode and then observe where the startup process fails. Verbose mode is initiated by holding down Command-V during system startup.

- A. Which changes are made when OS X Safe Boots?
- B. What backup destination disks does Time Machine support?
- C. How do network devices acquire and use self-assigned TCP/IP addresses?
- D. How do you further resolve an issue that disappears when the Mac successfully safe-boots?

Correct Answer: D

Section: (none)

Explanation

Explanation/Reference:

Explanation:

QUESTION 64

Why does the Finder hide certain folders at the root of the system volume?

- A. The Disk Utility Verify and Repair feature is used to verify or repair the partition scheme and Real 55 Apple 9L0-415 Exam directory structure of a volume. These elements contain the information used to locate files and folders on the volume.
- B. The Finder populates the Network folder using information provided by the dynamic network services discovery protocols. Computers providing services appear as resources inside the Network folder, and service discovery zones or workgroups appear as folders. Any currently connected servers also appear in the Network folder.
- C. The firmware initializes the Mac computer's hardware and locates the booter file on a system volume. The Power-On Self-Test (POST) checks for basic hardware functionality when the Mac powers on.
- D. The Finder hides traditional UNIX resources from average users because they don't need to have access to those items. If users need access to these UNIX items, they can access them from Terminal.

Correct Answer: D

Section: (none)

Explanation

Explanation/Reference:

Explanation:

QUESTION 65

Where are the keychain files stored?



<http://www.gratisexam.com/>

- A. A Safe Boot performs the following permanent actions: attempting to repair the system volume structure, deleting system KEXT caches, and deleting font caches.
- B. The master password is used to reset local account passwords.
- C. Each user starts with a login keychain saved at /Users/<username>/Library/Keychain/ login.keychain and a Local Items/iCloud keychain saved in the /Users/<username>/Library/Keychains/<UUID> folder. Administrative users can manage systemwide authentication assets with the Real 56 Apple 9L0-415 Exam /Library/Keychain/System.keychain. Finally, Apple maintains several items in /System/Library/Keychains/ for OS X system use.
- D. Spotlight metadata index databases are stored at the root of every volume in a /.Spotlight-V100 folder. However, a Legacy FileVault user's database is stored in his encrypted home folder. And the Mail application maintains its own database in each user's home folder at ~/Library/Mail/V2/MailData/Envelope Index. Spotlight plug-ins can be located in any of the Library folders in a folder named Spotlight.

Correct Answer: C

Section: (none)

Explanation

Explanation/Reference:

right choice of answer.d

QUESTION 66

After initial OS X setup, iCloud settings can be managed from iCloud or Internet Accounts preferences.

- A. What's the easiest method in OS X to configure VPN settings?
- B. Aside from initial OS X configuration, where can you manage iCloud settings?
- C. Which OS X application is responsible for the creation and management of disk images?
- D. What key features do you gain by setting up iCloud?

Correct Answer: B

Section: (none)

Explanation

Explanation/Reference:

Explanation:

Real 57

Apple 9L0-415 Exam

QUESTION 67

A standard user can connect to any non-WPA Enterprise Wi-Fi network via the Wi-Fi status menu. Because the system Keychain must be modified for WPA Enterprise connections, only an administrative user can establish these types of connections.

- A. What's the easiest method in OS X to configure VPN settings?
- B. Through what mechanism can a standard user configure Wi-Fi settings?
- C. Which applications can manage document locking?
- D. How can you limit the use of Location Services?

Correct Answer: B

Section: (none)

Explanation

Explanation/Reference:

Explanation:

QUESTION 68

How does the keychain system help protect your information?

- A. Time Machine always ignores temporary files, Spotlight indexes, items in the Trash, log files, and anything else that can be considered a cache. Time Machine also ignores any files an application has defined as exempt, or any files you have defined as exempt in Time Machine preferences.
- B. When fast user switching is enabled, all users are allowed to see other users' locally connected disks.
- C. The keychain system manages encrypted files that are used to securely save your items. By default, every user has login and Local Items keychains that use

the same password as his account. Not even other administrative users can access your keychain secrets without knowing the keychain's password.

D. By default, system files and security updates are automatically installed when available.

Correct Answer: C

Section: (none)

Explanation

Explanation/Reference:

Explanation:

QUESTION 69

Key chains are used to store secrets such as resource passwords, digital certificates, and encryption keys. The keychain system can also securely store Safari AutoFill information, Internet Account settings, and secure text notes.

Real 58

Apple 9L0-415 Exam

- A. What type of items can be found in a keychain?
- B. How does file system journaling work?
- C. What are the advantages of code signing?
- D. What does OS X use bundles or packages for?

Correct Answer: A

Section: (none)

Explanation

Explanation/Reference:

Explanation:

QUESTION 70

What three security options does the Gatekeeper system allow? Which Gatekeeper option is the OS X default?

- A. Any item downloaded using one of the built-in OS X applications will be marked for quarantine. Third-party applications may not mark downloaded items for quarantine.
- B. Gatekeeper can restrict software to Mac App Store applications only, or Mac App Store and identified developer applications only (this is the default option), or any application regardless of origin.
- C. A device driver is software specially designed to facilitate the communication between OS X and a peripheral. Device drivers can be kernel extensions, framework plug-ins, or standalone applications.
- D. You can prevent automatic updates for all users by disabling the options in App Store preferences. You can further restrict a user's ability to use the Mac App

Store by configuring Parental Controls for the user's account.

Correct Answer: B

Section: (none)

Explanation

Explanation/Reference:

Explanation:

QUESTION 71

What can you enable to locate a lost Mac system?

- A. The master password is used to reset local account passwords.
- B. Using the Finder Info window you can force an application to open in 32-bit mode. This step is necessary for a 64-bit application to support older 32-bit plug-ins or application resources.
- C. To automatically connect a file share when the user logs in to the system, drag the share from the Finder to the user's login items in Users & Groups preferences. Or you can drag the share to the right side of the user's Dock, and it will automatically connect when the user clicks the share's icon in the Dock.
- D. iCloud Find My Mac allows you to remotely locate a lost Mac system. You enable this feature in iCloud preferences. To locate a lost Mac system, you can use the iCloud website or the Find My Real 59 Apple 9L0-415 Exam iPhone app on an iOS device.

Correct Answer: D

Section: (none)

Explanation

Explanation/Reference:

properly sorted answer.

QUESTION 72

What's used to identify a Wi-Fi network?

- A. OS X sharing services include DVD or CD sharing, Screen Sharing, File Sharing, Printer Sharing, Scanner Sharing, Remote Login, Remote Management (ARD), Apple Events, Internet Sharing, and Bluetooth Sharing.
- B. The network service order list is used to determine the primary network service interface if there is more than one active service. All network traffic that isn't better handled via local connection to an active network service interface is sent to the primary network service interface. So in most cases all WAN traffic, Internet traffic, and DNS resolution is sent through the primary network service interface.
- C. A Service Set Identifier, or SSID, is used to identify a Wi-Fi network name and associated configuration.
- D. AirDrop provides a quick and easy method to share files locally via Wi-Fi. AirDrop creates a secure peer-to-peer network between local devices. You can verify

that a Mac supports AirDrop from the Finder Go menu.

Correct Answer: C

Section: (none)

Explanation

Explanation/Reference:

Explanation:

QUESTION 73

Before the local user account is created on a system, you must first copy the restored user's home folder to the /Users folder. Then after you create the new user in Users & Groups preferences with the same account name, the system will prompt you to associate the new account with the restored home folder.

- A. How can you verify that a specific network service is available from a service provider?
- B. How does a user that changes his own account password affect his login keychain?
- C. How do you identify the ownership and permissions of a file or folder in the Finder?
- D. How do you make OS X associate a new local user account with a manually migrated or restored user's home folder?

Correct Answer: D

Section: (none)

Explanation

Explanation/Reference:

Explanation:

QUESTION 74

What are the primary user session stages in OS X? What are the visual and audible cues of these items?

Real 61

Apple 9L0-415 Exam

- A. An item's ownership and permissions can be identified using the Info or Inspector windows in the Finder.
- B. In the Mac App Store, you can view the current Apple ID by selecting Store from the menu bar.
You can get further details regarding this Apple ID, by selecting View My Account in the same menu.
- C. Each primary stage of the user session can be indicated by the following: the login window process displays the login screen; the user launched process loads applications like the Finder after user authentication; and the user environment is active any time the user is logged into the system.
- D. During user logout, the user's login window process does the following: requests that all user applications quit; automatically quits any user background processes; runs any logout scripts; records the logout to the main system.log file; resets device permissions and preferences to their defaults; and quits the user's login window and launched processes.

Correct Answer: C

Section: (none)

Explanation

Explanation/Reference:

selected answer is true.

QUESTION 75

At system shutdown, the login window process logs all users out and tells the kernel to quit all remaining system processes. Once the kernel quits all system processes, the Mac shuts down.

- A. What does the master password do?
- B. What are Safe Sleep and Power Nap?
- C. What are PPD files responsible for?
Real 62
Apple 9L0-415 Exam
- D. What happens during system shutdown?

Correct Answer: D

Section: (none)

Explanation

Explanation/Reference:

Explanation:

QUESTION 76

Bundles and packages are used to combine complex items into individual folders. Packages have the additional advantage of appearing as a single item in the Finder. This allows software developers to combine resources into a single item and prevents users from seeing and potentially damaging those resources through deletion or moving of files.

- A. What does OS X use bundles or packages for?
- B. What does the diagnostic reporting feature do?
- C. How does file system journaling work?
- D. What does CUPS do?
Real 67
Apple 9L0-415 Exam

Correct Answer: A

Section: (none)

Explanation

Explanation/Reference:

Explanation:

QUESTION 77

Standard is the default account type; administrative users can make changes to the system; a guest user doesn't require a password; sharing-only users can access only shared files; and the root user has unlimited access to any file or folder in the system.

- A. What does OS X use bundles or packages for?
- B. What are the advantages of code signing?
- C. What are some of the common file flags used by OS X?
- D. What are the five types of user accounts in OS X? How are they different?

Correct Answer: D

Section: (none)

Explanation

Explanation/Reference:

Explanation:

QUESTION 78

File system journaling records what file operations are in progress at any given moment. This way, if a power failure or system crash occurs, after the system restarts, it will be able to quickly verify the integrity of the volume by "replaying" the journal.

- A. What does the master password do?
- B. What are PPD files responsible for?
- C. How does file system journaling work?
- D. What are the five System Preference categories?

Correct Answer: C

Section: (none)

Explanation

Explanation/Reference:

Explanation:

QUESTION 79

The OS X Mavericks installer can be downloaded from the Mac App Store for free.

- A. How do you share printers with other users?
- B. How can you identify duplicate fonts?
- C. How does the OS X built-in firewall work?
- D. How can you acquire the OS X Mavericks installer?

Correct Answer: D

Section: (none)

Explanation

Explanation/Reference:

accurate answer.

QUESTION 80

If DHCP is specified as the configuration for a TCP/IP connection and no DHCP service is available, the device automatically selects a random IP address in the 169.254.xxx.xxx range. It checks the local network to ensure that no other network device is using the randomly generated IP address before it applies the IP address. In most cases, though, this addressing isn't normal, and it's often indicative of a problem with DHCP services.

- A. How do network devices acquire and use self-assigned TCP/IP addresses?
- B. How do you share printers with other users?
- C. How do you engage Quick Look? Which applications support it?
- D. How can you encrypt a disk without losing its contents?

Correct Answer: A

Section: (none)

Explanation

Explanation/Reference:

Explanation:

QUESTION 81

Local account passwords can be reset by an administrator in Users & Groups, the master password at login, an Apple ID at login, a FileVault 2 recovery key at startup, and by the Reset Password application in OS X Recovery.

- A. What three methods can be used to uninstall applications?
- B. What does OS X use bundles or packages for?
- C. What methods can be used to reset a user's lost account password?
- D. What four methods can be used to restore from a Time Machine backup?

Correct Answer: C

Section: (none)

Explanation

Explanation/Reference:

Explanation:

QUESTION 82

How do the four default System Preferences categories differ?

- A. The easiest method to configure VPN settings is to use a configuration profile containing all the relevant VPN setup information.
- B. During installation of OS X Mavericks, the only optional choice is to define an installation destination other than the Mac computer's current default system disk.
- C. Archive files are much simpler to create in the Finder and are compatible with third-party operating systems. Disk images are more difficult to create and manage, but they offer greater flexibility. Primarily, disk images can be easily modified and converted. However, OS X style disk images aren't compatible with third-party operating systems.
- D. Generally, Personal preferences affect only a single user; Hardware preferences adjust hardware & peripheral settings; Internet & Wireless preferences affect personal & system network settings; and System Preferences affect all users and often require administrative access.

Correct Answer: D

Section: (none)

Explanation

Explanation/Reference:

Explanation:

QUESTION 83

Real 74

Apple 9L0-415 Exam

The OS X Recovery Disk Assistant can create a small OS X Recovery disk that lacks the OS X installation assets. An OS X Installation disk, which includes the full OS X installation assets, can be created by using the createinstallmedia command line tool found inside the Install OS X Mavericks application.

- A. What four methods can be used to eject a volume or disk from the Finder?
- B. What two methods can be used to create an external OS X Recovery disk?
- C. What does OS X use bundles or packages for?
- D. What two volume formats are supported for an OS X system volume?

Correct Answer: B

Section: (none)

Explanation

Explanation/Reference:

Explanation:

QUESTION 84

Disks are the actual storage hardware; partitions are logical divisions of a disk used to define the storage space; and volumes, contained inside partitions, are used to define how the individual files and folders are saved to the storage.

- A. Where are application preferences stored?
- B. How are items inside the Finder's Network folder populated?
- C. How does IPv4 addressing differ from IPv6 addressing?
- D. How are disks, partitions, and volumes different from one another?

Correct Answer: D

Section: (none)

Explanation

Explanation/Reference:

Explanation:

QUESTION 85

What's the locked file flag?

- A. The Disk Utility Repair Permissions feature repairs only the ownership and permissions for items installed by Apple. However, this may resolve issues with third-party products.
- B. The OS X built-in firewall inspects each incoming network connection to determine if it's allowed. Connections are allowed or denied on a per-application basis.
- C. The locked file flag prevents anyone, including the item's owner, from editing an item. Only the item's owner can unlock the item to then allow modification.
- D. The system keeps applications from interfering with one another by segregating their memory usage using protected memory. Mac computers with 64-bit-capable processors allow processes to run in 64-bit mode, which allows them to individually access more than 4 GB of memory.

Real 75

Apple 9L0-415 Exam

Correct Answer: C

Section: (none)

Explanation

Explanation/Reference:

Explanation:

QUESTION 86

What Wi-Fi authentication protocols are supported by OS X?

- A. The Setup Assistant process guides a user through initial configuration of OS X Mavericks.
- B. Disk Utility is the primary application for creating and managing disk images.
- C. OS X supports authenticated Wi-Fi via the following authentication protocols: WEP, WPA/WPA2 Personal, and WPA/WPA2 Enterprise, which includes support for 802.1X authentication.
- D. OS X supports the following network interfaces and protocols:
 - Ethernet IEEE 802.3 family of hardware network interface standards · Wireless (Wi-Fi) IEEE 802.11 family of hardware network interface standards FireWire IEEE 1394 bridged network interface
 - Thunderbolt bridged network interface
 - Bluetooth wireless hardware network interface
 - USB connectivity via cellular network adapters or iOS devices with cellular network service · Virtual private network (VPN) virtual network interface via the Point-to-Point Tunneling Protocol (PPTP)
 - VPN virtual network interface via the Layer 2 Tunneling Protocol (L2TP) over Internet Protocol Security (IPSec)
 - VPN virtual network interface via Cisco IPSec
 - Point-to-Point Protocol over Ethernet (PPPoE) virtual network interface · 6 to 4 virtual network interface
 - Virtual local area network (VLAN) virtual network interface via the IEEE 802.1Q standard · Link Aggregation virtual network interface via the IEEE 802.3ad standard · Transmission Control Protocol/Internet Protocol (TCP/IP), also known as the Internet protocol suite
 - Dynamic Host Configuration Protocol (DHCP)
 - Domain Name Service (DNS) protocol
 - Network Basic Input/Output System (NetBIOS) and Windows Internet Naming Service (WINS) protocols
 - Authenticated Ethernet via the 802.1X protocol

Correct Answer: C

Section: (none)

Explanation

Explanation/Reference:

proper answer.

QUESTION 87

Real 76

Apple 9L0-415 Exam

How is Quick Look able to preview so many file types?

- A. Quick Look uses a number of plug-ins that give it the capability to preview documents. These plug-ins live in Quick Look folders in any Library folder on OS X.
- B. During installation of OS X Mavericks, the only optional choice is to define an installation destination other than the Mac computer's current default system disk.
- C. The Finder doesn't show items with periods at the beginning of their filenames or items with the hidden file flag enabled. Both methods for hiding items can only be managed from the command line interface.
- D. Any application that supports Auto Save and the Finder can manage document locking.

Correct Answer: A

Section: (none)

Explanation

Explanation/Reference:

Explanation:

QUESTION 88

Which application is used to examine open applications on OS X?

- A. The Disk Utility Verify and Repair feature is used to verify or repair the partition scheme and directory structure of a volume. These elements contain the information used to locate files and folders on the volume.
- B. AppleTalk works only with OS X v10.5 or earlier.
- C. The master password is used to reset local account passwords.
- D. The Activity Monitor application is used to monitor open processes and applications.

Correct Answer: D

Section: (none)

Explanation

Explanation/Reference:

Explanation:

QUESTION 89

iCloud is a free service from Apple that provides cloud storage and communication services for applications, including Mail, Contacts, Calendars, Reminders, Notes, Safari, Keychain, Photos and any other applications that support iCloud integration. iCloud also provides Find My Mac technology for help locating a lost or stolen system.

- A. What key features do you gain by setting up iCloud?
- B. What does OS X use bundles or packages for?
- C. What happens during system shutdown?
- D. What can you enable to locate a lost Mac system?

Correct Answer: A

Section: (none)

Explanation

Explanation/Reference:

Explanation:

QUESTION 90

OS X software updates can be downloaded from the Apple Support website using any modern web browser. Updates take the form of installation packages that are installed via the Installer application.

- A. How can you prevent a user from installing software updates?
- B. What four methods can be used to eject a volume or disk from the Finder?
- C. Which applications are used to manually acquire and install OS X software updates?
- D. Which items aren't loaded when OS X Safe Boots?

Correct Answer: C

Section: (none)

Explanation

Explanation/Reference:

Explanation:

QUESTION 91

Client software is used to access network services provided by server software. The connection is established using a common network protocol known by both the client and server software. Thus, the client and server software can be from different sources.

- A. What's the best source for acquiring printer drivers for OS X?
- B. What's the relationship between clients and servers as it relates to network service access?
- C. What's target disk mode and how is it engaged?
- D. What's the primary interface for configuring network service applications?

Correct Answer: B

Section: (none)

Explanation

Explanation/Reference:

Explanation:

QUESTION 92

The minimum requirements for upgrading OS X Mavericks are:

- OS X v10.6.8 or later
- 2 GB of memory

- 8 GB of available space
- Some features require an Apple ID
- Some features require a compatible Internet service provider
- Compatible Mac model (as listed on www.apple.com/osx/specs/)

- A. What are the minimum hardware requirements for upgrading a system with OS X Mavericks?
- B. What are the system requirements for using FileVault 2?
- C. What two volume formats are supported for an OS X system volume?
- D. What are the requirements for purchasing applications via the Mac App Store? Real 79
Apple 9L0-415 Exam

Correct Answer: A
Section: (none)
Explanation

Explanation/Reference:
Explanation:

QUESTION 93

Most common IP addresses and subnet masks share the same IPv4 formatting. An IPv4 address is a 32-bit number represented in four groups of three-digit numbers, known as octets, separated by periods. Each octet has a value between 0 and 255. An IPv6 address is a 128-bit number that's presented in eight groups of four-digit hexadecimal numbers separated by colons. This allows for a huge range of addresses, and as a result IPv6 addressing essentially includes subnet information.

- A. How can you identify duplicate fonts?
- B. What types of files are omitted from Time Machine backups?
- C. How does IPv4 addressing differ from IPv6 addressing?
- D. How does the Secure Empty Trash feature in Finder work? Real 83
Apple 9L0-415 Exam

Correct Answer: C
Section: (none)
Explanation

Explanation/Reference:
Explanation:

QUESTION 94

The master password is used to reset local account passwords.

- A. How can you identify duplicate fonts?
- B. Where are application preferences stored?
- C. What are the advantages of code signing?
- D. What does the master password do?

Real 84

Apple 9L0-415 Exam

Correct Answer: D

Section: (none)

Explanation

Explanation/Reference:

Explanation:

QUESTION 95

The Setup Assistant process guides a user through initial configuration of OS X Mavericks.

- A. What steps should you use when troubleshooting application issues?
- B. What are the minimum hardware requirements for upgrading a system with OS X Mavericks?
- C. What two methods can be used to create an external OS X Recovery disk?
- D. What process is used to guide a user through the initial configuration of OS X Mavericks?

Correct Answer: D

Section: (none)

Explanation

Explanation/Reference:

Explanation:

QUESTION 96

The Privacy pane of Security & Privacy preferences can be used to allow or disallow applications' access to Location Services, Contacts, Calendars, Reminders, social network services, and Accessibility application access.

- A. How can you acquire the OS X Mavericks installer?
- B. How can you limit the use of Location Services?
- C. How can you identify duplicate fonts?

D. What does the master password do?

Correct Answer: B

Section: (none)

Explanation

Explanation/Reference:

Explanation:

QUESTION 97

What two methods can be used to create an external OS X Recovery disk?

(No Answer)

- A. The Font Book application shows a small dot next to the name of any font that has duplicate resources.
- B. The OS X Recovery Disk Assistant can create a small OS X Recovery disk that lacks the OS X Real 85 Apple 9L0-415 Exam installation assets. An OS X Installation disk, which includes the full OS X installation assets, can be created by using the create install media command line tool found inside the Install OS X Mavericks application.
- C. The system version, build number, and hardware serial number are located in the About This Mac dialog or the login screen. The system version number defines the specific version of OS X currently installed. The system build number is an even more specific identifier used primarily by developers. Finally, the hardware serial number is a unique number used to identify your specific Mac.
- D. Any item downloaded using one of the built-in OS X applications will be marked for quarantine. Third-party applications may not mark downloaded items for quarantine.

Correct Answer: B

Section: (none)

Explanation

Explanation/Reference:

fine answer.

QUESTION 98

What's a network location? Who can access network locations?

- A. The OS X Mavericks installer can be downloaded from the Mac App Store for free.
- B. The Archive option in the Finder creates compressed zip archive files. An interface is any channel through which network data can flow. Hardware network interfaces are defined by physical network connections, and virtual network interfaces are logical network connections that ride on top of hardware network connections.
- C. A protocol is a set of rules used to describe a specific type of network communication.

Protocols are necessary for separate network devices to communicate properly. Finally, a network service (as it pertains to Network preferences) is the collection of settings that define a network connection.

- D. A network location is a saved state of Network preferences that contains all network interface settings. Only administrators can define network locations, but if more than one location exists, all users can switch between the various network locations via the Apple menu.

Correct Answer: D

Section: (none)

Explanation

Explanation/Reference:

Explanation:

QUESTION 99

FileVault 2 protects the entire system volume and all its data by using strong XTS- AES 128 encryption. During system startup, a FileVault-enabled user must enter her password to decrypt the system volume.

- A. How does FileVault 2 protect a user's data?
Real 86
Apple 9L0-415 Exam
- B. How does the Secure Empty Trash feature in Finder work?
- C. Where are application preferences stored?
- D. How does the OS X built-in firewall work?

Correct Answer: A

Section: (none)

Explanation

Explanation/Reference:

Explanation:

QUESTION 100

What permissions are modified by the Disk Utility Repair Permissions feature?

- A. Disk Utility is the primary application for creating and managing disk images.
- B. The master password is used to reset local account passwords.
- C. The Disk Utility Verify and Repair feature is used to verify or repair the partition scheme and directory structure of a volume. These elements contain the information used to locate files and folders on the volume.
- D. The Disk Utility Repair Permissions feature repairs only the ownership and permissions for items installed by Apple. However, this may resolve issues with third-party products.

Correct Answer: D

Section: (none)

Explanation

Explanation/Reference:

Explanation:

QUESTION 101

What three primary sources can Migration Assistant pull from?

- A. The OS X Recovery Disk Assistant can create a small OS X B. Recovery disk that lacks the OS X installation assets. An OS X Installation disk, which includes the full OS X installation assets, can be created by using the create install media command line tool found inside the Install OS X Mavericks application.
- B. A network client uses the subnet mask to determine whether the destination IP address is on the LAN. If the destination IP address isn't on the LAN, it's assumed the destination address is on another network, and the client sends the data to the IP address of the local network router. The network router then sends the data, via a WAN connection, on to another router that it thinks is closer to the destination. This continues across WAN connections from router to router until the data reaches its destination.
- C. Time Machine starts with a full copy of the file system to the backup disk. Then it maintains a list of changes to the file system, and every hour copies only the changes to the backup disk. In the backup, it creates a simulation of the full file system using hard links for files that haven't changed.
- D. Migration Assistant can migrate information from other OS X systems, Windows systems, and Real 87 Apple 9L0-415 Exam other disks, including Time Machine backups.

Correct Answer: D

Section: (none)

Explanation

Explanation/Reference:

Explanation:

QUESTION 102

How does a user that changes his own account password affect his login keychain?

- A. When a user changes his own account password, the system will keep his login keychain password in sync.
- B. The Archive option in the Finder creates compressed zip archive files.
- C. The master password is used to reset local account passwords.
- D. Time Machine starts with a full copy of the file system to the backup disk. Then it maintains a list of changes to the file system, and every hour copies only the changes to the backup disk. In the backup, it creates a simulation of the full file system using hard links for files that haven't changed.

Correct Answer: A

Section: (none)

Explanation

Explanation/Reference:

Explanation:

QUESTION 103

What's the best source for acquiring printer drivers for OS X?

- A. The network service order list is used to determine the primary network service interface if there is more than one active service. All network traffic that isn't better handled via local connection to an active network service interface is sent to the primary network service interface. So in most cases all WAN traffic, Internet traffic, and DNS resolution is sent through the primary network service interface.
- B. The Apple print drivers are the best source for configuring OS X printers. One method is to let the software update system automatically download and install the appropriate printer drivers. Or you can manually download and install printer drivers from the Apple support website.
- C. The master password is used to reset local account passwords.
- D. The Activity Monitor application is used to monitor open processes and applications.

Correct Answer: B

Section: (none)

Explanation

Explanation/Reference:

Explanation:

QUESTION 104

Which two methods can be used to automatically connect a network share?

- A. Resource contention occurs when fast user switching is enabled and a user tries to access an item another user already has open in the background. Document contention occurs when a user attempts to open a document another user has already opened. Peripheral contention occurs when a user attempts to access a peripheral already in use by another user's open application. Application contention occurs when the second user attempts to access an application designed to run only once on a system.
- B. The four methods used to eject a volume or disk from the Finder are:
 - Drag the disk icon to the Trash in the Dock.
 - Press and hold the Eject key for a few moments to unmount and eject optical media.
 - Select the volume you want to eject and choose Eject from the File menu.
 - In the Finder sidebar, click the small Eject button next to the volume you want to unmount and Real 93Apple 9L0-415 Exam
eject.
- C. To automatically connect a file share when the user logs in to the system, drag the share from the Finder to the user's login items in Users & Groups preferences. Or you can drag the share to the right side of the user's Dock, and it will automatically connect when the user clicks the share's icon in the Dock.

- D. Time Machine starts with a full copy of the file system to the backup disk. Then it maintains a list of changes to the file system, and every hour copies only the changes to the backup disk. In the backup, it creates a simulation of the full file system using hard links for files that haven't changed.

Correct Answer: C

Section: (none)

Explanation

Explanation/Reference:

best suitable answer.

QUESTION 105

How can an OS X system automatically connect to a Wi-Fi network?

- A. A new OS X system can only automatically connect to Wi-Fi networks that have no standard authentication mechanism, otherwise known as an "open network." However, a configured OS X system can automatically reconnect to authenticated Wi-Fi networks, provided that the appropriate information was saved to the Keychain system.
- B. Code-signed items include a digital signature that the system can use to verify the authenticity and integrity of the application or process and its resources.
- C. A standard user can connect to any non-WPA Enterprise Wi-Fi network via the Wi-Fi status menu. Because the system Keychain must be modified for WPA Enterprise connections, only an administrative user can establish these types of connections.
- D. The Activity Monitor application is used to monitor open processes and applications.

Correct Answer: A

Section: (none)

Explanation

Explanation/Reference:

Explanation:

QUESTION 106

What's unique about the permissions of the /Users/Shared folder?

- A. When fast user switching is enabled, all users are allowed to see other users' locally connected disks.
- B. The Shared folder is set up to allow all users to read and write files, but only the user who owns an item can delete it from the Shared folder. This is accomplished using the sticky bit permissions setting.
- C. The Ping tab of Network Utility allows you to test basic connectivity to another network host by sending and then waiting for the return of a ping packet.
- D. You can prevent automatic updates for all users by disabling the options in App Store preferences. You can further restrict a user's ability to use the Mac App Store by configuring Parental Controls for the user's account.

Correct Answer: B

Section: (none)

Explanation

Explanation/Reference:

Explanation:

QUESTION 107

Holding down the Option key at startup opens Startup Manager, which allows you to temporarily choose another startup disk.

- A. Which keyboard shortcut can be used to temporarily choose another startup disk?
- B. Which keyboard shortcut is used to Safe Boot OS X?
- C. Which two methods can be used to automatically connect a network share?
- D. What methods can be used to reset a user's lost account password?

Correct Answer: A

Section: (none)

Explanation

Explanation/Reference:

Explanation:

Real 95

Apple 9L0-415 Exam

QUESTION 108

Where are application preferences stored?

- A. The locked file flag prevents anyone, including the item's owner, from editing an item. Only the item's owner can unlock the item to then allow modification.
- B. Code-signed items include a digital signature that the system can use to verify the authenticity and integrity of the application or process and its resources.
- C. Spotlight metadata index databases are stored at the root of every volume in a /.Spotlight-V100 folder. However, a Legacy FileVault user's database is stored in his encrypted home folder. And the Mail application maintains its own database in each user's home folder at ~/Library/Mail/V2/MailData/Envelope Index. Spotlight plug-ins can be located in any of the Library folders in a folder named Spotlight.
- D. Application preferences are almost always stored in the user's Library folder in the ~/Library/Preferences folder. Newer sandboxed applications must always store their preferences in a ~/Library/Containers/<Bundle ID>/Data/Library/Preferences folder, where "<Bundle ID>" is the unique bundle identifier for the application.

Correct Answer: D

Section: (none)

Explanation

Explanation/Reference:

Real 96

QUESTION 109

Review the screenshot, and then answer the question below.



Real 2

Apple 9L0-415 Exam

You connect an HFS+-formatted FireWire hard disk to a Mac, and configure it as shown in the screenshot. What will happen the next time a standard user attempts to mount the hard disk?

- A. The disk will mount, and the user will be able to read, modify, and delete any file on the disk.
- B. The user will be required to enter an administrator password to mount the disk; once the disk is mounted, the user will be able to read any file on the disk, but will be required to re-enter an administrator password to modify or delete files.
- C. The disk will mount, and the user will be able to read any file on the disk; the user will be required to enter an administrator password to modify or delete files on the disk.
- D. The user will be required to enter an administrator password to mount the disk; once the disk is mounted, the user will be able to read, modify, and delete any file on the disk.

Correct Answer: A

Section: (none)

Explanation

Explanation/Reference:

Explanation:

QUESTION 110

In OS X Mountain Lion, where do most applications that are NOT sandboxed store their user- specific preferences?

- A. In a preferences database file in /Library/
- B. In .DS_Store files, at the root level of ~/
- C. In a preferences database file in ~/Library/
- D. In application-specific preferences files in ~/Library/Preferences/

Correct Answer: D

Section: (none)

Explanation

Explanation/Reference:

Explanation:

QUESTION 111

On an OS X computer running Mountain Lion, changes made in the Software Update pane of System Preferences apply to ALL users of the system.

A. True

B. False

Correct Answer: A

Section: (none)

Explanation

Explanation/Reference:

Explanation:

QUESTION 112

Review the screenshot of the My Account pane of Users & Groups preferences, and then answer the question below.



An OS X Mountain Lion computer has three local users configured as shown above. Bill Sykes has lost the password to his account. Which procedure will let you reset his password?

Real 4
Apple 9L0-415 Exam

- A. Log in as Bill Sykes using the root password, open Users & Groups preferences, and then reset his password.
- B. Restart the Mac from the OS X Recovery partition, open Terminal from the Utilities menu, type `resetpassword` and press Return to open the Reset Password utility, and then reset his password.
- C. Log in as Chris, open Directory preferences and enable the root user, then authenticate as the root user in Users & Groups preferences, and then reset Bill Sykes' password.
- D. Log in as Chris, open Reset Password from the Utilities folder, and then reset Bill Sykes' password.

Correct Answer: B
Section: (none)
Explanation

Explanation/Reference:

Explanation:

QUESTION 113

Review the screenshot, and then answer the question below.

Real 5

Apple 9L0-415 Exam



If you click Delete User in the dialog shown above, what will happen to James White's home folder?

- A. It will be moved to the Trash.
- B. "Deleted" will be appended to the home folder name, and it will be archived in Time Machine in a compressed and encrypted file.
- C. "Deleted" will be appended to the home folder name, and its permissions will be changed to allow administrator user access only.
- D. It will be deleted immediately, without being moved to the Trash.

Correct Answer: D

Section: (none)

Explanation

Explanation/Reference:

Explanation:

QUESTION 114

Which of these is a recovery key storage location that FileVault 2 offers when you enable it?

- A. Your iCloud account
- B. The System Keychain
- C. The OS X Recovery partition
- D. An Apple server

Correct Answer: D

Section: (none)

Explanation

Explanation/Reference:

Explanation:

Real 6
Apple 9L0-415 Exam

QUESTION 115

What's the purpose of Internet Protocol v4 (IPv4) addresses and subnet masks?

- A. The Finder doesn't show items with periods at the beginning of their filenames or items with the hidden file flag enabled. Both methods for hiding items can only be managed from the command line interface.
- B. The master password is used to reset local account passwords.
- C. The Internet Protocol (IP) address identifies the location of a specific network device. IP addresses are the primary identification used by the Internet protocol suite TCP/IP for both local area and wide area networks. Subnet masks are used by network devices to identify their local network range and to determine whether outgoing data is destined for a network device on the LAN.
- D. The Ping tab of Network Utility allows you to test basic connectivity to another network host by sending and then waiting for the return of a ping packet.

Correct Answer: C

Section: (none)

Explanation

Explanation/Reference:

Explanation:

QUESTION 116

All Apple software updates are handled via the Mac App Store.

- A. How can you identify duplicate fonts?
- B. Which items fall under the file quarantine system?
- C. What can you enable to locate a lost Mac system?
- D. Which application can you open to initiate Apple software updates?

Correct Answer: D

Section: (none)

Explanation

Explanation/Reference:

right choice of answer.

QUESTION 117

You can deselect the option to "Reopen windows when logging back in" from the logout

Real 88

Apple 9L0-415 Exam

verification dialog. You can deselect the option to "Close windows when quitting an application" from General preferences. Also from General preferences, you can select the option to "Ask to keep changes when closing documents," which turns off the Auto Save feature.



<http://www.gratisexam.com/>

- A. Where can you adjust application Auto Save and Resume options?
- B. How can you identify which applications are installed on your Mac?
- C. How can you identify if a Mac requires a firmware update?
- D. How can you prevent a user from installing software updates?

Correct Answer: A

Section: (none)

Explanation

Explanation/Reference:

Explanation:

QUESTION 118

How does the OS X built-in firewall work?

- A. The Disk Utility Repair Permissions feature repairs only the ownership and permissions for items installed by Apple. However, this may resolve issues with third-party products.
- B. The Ping tab of Network Utility allows you to test basic connectivity to another network host by sending and then waiting for the return of a ping packet.
- C. The OS X built-in firewall inspects each incoming network connection to determine if it's allowed. Connections are allowed or denied on a per-application basis.
- D. Network services are established using a common network protocol. The protocol specifies which TCP or UDP port number is used for communications.

Correct Answer: C

Section: (none)

Explanation

Explanation/Reference:

Explanation:

QUESTION 119

Safe Sleep is a feature of all OS X compatible portable Macs that saves the system's state to permanent storage in cases where the computer's battery drains completely. Power Nap is a feature of Mac systems introduced after mid-2011 that use all-flash storage. Power Nap allows the Mac to automatically wake in a low-power mode so the system can perform a variety of application and system updates.

- A. What happens during system shutdown?
- B. What are Safe Sleep and Power Nap?
- C. Which sharing services can OS X provide?
- D. What does the master password do?

Correct Answer: B

Section: (none)

Explanation

Explanation/Reference:

Explanation:

QUESTION 120

How is the Domain Name Service (DNS) used to facilitate network naming?

- A. The OS X Mavericks installer can be downloaded from the Mac App Store for free.
- B. Keychains are used to store secrets such as resource passwords, digital certificates, and encryption keys. The keychain system can also securely store Safari AutoFill information, Internet Account settings, and secure text notes.
- C. The Archive option in the Finder creates compressed zip archive files.
- D. The DNS service is used to translate host names to IP addresses via forward lookups and translate IP addresses to host names via reverse lookups. DNS is architected as a hierarchy of worldwide domain servers. Local DNS servers provide name resolution and possibly host names for local clients. These local DNS servers connect to DNS servers higher in the DNS hierarchy to resolve both unknown host names and host local domain names.

Correct Answer: D

Section: (none)

Explanation

Explanation/Reference:

definite answer.

QUESTION 121

Real 90

Apple 9L0-415 Exam

OS X supports Bonjour and Server Message Block (SMB), including support for legacy Network Basic Input/Output and Windows Internet Naming Service (NetBIOS and WINS) dynamic network service discovery protocols.

- A. How does OS X use dynamic network service discovery protocols to access network services?
- B. Which sharing services can OS X provide?
- C. What Wi-Fi authentication protocols are supported by OS X?
- D. Which two dynamic network service discovery protocols are supported by OS X?

Correct Answer: D

Section: (none)

Explanation

Explanation/Reference:

Explanation:

QUESTION 122

What's a device driver? Which three primary types of device drivers are there?

- A. The Traceroute tab of Network Utility allows you to verify the connection hops between your Mac and a remote host.
- B. A device driver is software specially designed to facilitate the communication between OS X and a peripheral. Device drivers can be kernel extensions, framework plug-ins, or standalone applications.

- C. A Service Set Identifier, or SSID, is used to identify a Wi-Fi network name and associated configuration.
- D. A Safe Boot is initiated by holding down the Shift key during system startup

Correct Answer: B

Section: (none)

Explanation

Explanation/Reference:

Explanation:

QUESTION 123

If it appears that all configured printers are having problems, what's a potential quick fix?

Real 63

Apple 9L0-415 Exam

- A. Using the Finder Info window you can force an application to open in 32-bit mode. This step is necessary for a 64-bit application to support older 32-bit plug-ins or application resources.
- B. If a master password is reset because it was lost, Legacy FileVault accounts can't be reset by the new master password.
- C. If all printers appear to be having problems, a quick fix is to reset the entire printing system by using secondary (or Control-) click in the printer list and then choosing "Reset printing system."
- D. If a network device needs to send data to another network device on the same LAN, it addresses the outgoing packets based on the destination device's MAC address.

Correct Answer: C

Section: (none)

Explanation

Explanation/Reference:

Explanation:

QUESTION 124

Each primary stage of system initialization can be indicated by the following: firmware, startup chime or bright flash of the power-on light, followed by a light gray screen on the primary display; booter, a dark gray Apple logo on the primary display; kernel, a small dark gray spinning gear or spinning earth icon below the Apple logo; and system launchd, a white screen on all displays followed by the login screen.

- A. What are the primary system initialization stages in OS X? What are the visual and audible cues of these items?
- B. What are some privacy and security concerns with the Spotlight service?
- C. What are the advantages of code signing?

D. Why does the Finder hide certain folders at the root of the system volume?

Correct Answer: A

Section: (none)

Explanation

Explanation/Reference:

Explanation:

QUESTION 125

Three methods for uninstalling applications include:

- Open Launchpad, hold down the Option key, and click the "X" button
- In the Finder, drag the primary application to the Trash and then empty the Trash
- Use a custom-built uninstaller package

- A. What three methods can be used to uninstall applications?
- B. Which two methods can be used to automatically connect a network share?
- C. What three primary sources can Migration Assistant pull from?
- D. What four methods can be used to restore from a Time Machine backup? Real 64
Apple 9L0-415 Exam

Correct Answer: A

Section: (none)

Explanation

Explanation/Reference:

Explanation:

QUESTION 126

The Finder populates the Network folder using information provided by the dynamic network services discovery protocols. Computers providing services appear as resources inside the Network folder, and service discovery zones or workgroups appear as folders. Any currently connected servers also appear in the Network folder.

- A. Which items fall under the file quarantine system?
- B. How can you limit the use of Location Services?
- C. How are items inside the Finder's Network folder populated?
- D. How can you identify if a Mac requires a firmware update?

Correct Answer: C

Section: (none)

Explanation

Explanation/Reference:

real answer.

QUESTION 127

Any account password reset process won't change any keychain passwords. Therefore, the user's keychains won't automatically open when the user logs in with her new password. The user will

Real 65

Apple 9L0-415 Exam

have to manually change her keychain passwords using the Keychain Access utility.

- A. How does resetting a user's account password affect that user's login keychain?
- B. How does a user that changes his own account password affect his login keychain?
- C. How does network service order affect network connectivity?
- D. How does the Spotlight search service use metadata?

Correct Answer: A

Section: (none)

Explanation

Explanation/Reference:

Explanation:

QUESTION 128

What does CUPS do?

- A. PostScript Printer Description (PPD) files are printer driver files that instruct the CUPS system on how to communicate with specific printer models.
- B. Standard UNIX file system permissions allow only for permissions to be set for one owner, one group, and all others. ACLs, on the other hand, allow for an essentially unlimited list of permissions entries.
- C. Any application that supports Auto Save and the Finder can manage document locking.
- D. Common UNIX Printing System (CUPS) manages all printing for OS X, including both local and shared printing.

Correct Answer: D

Section: (none)

Explanation

Explanation/Reference:

Explanation:

QUESTION 129

The Installations section of System Information will show the history of all software installed via the Mac App Store or the OS X Installer.

- A. How does Time Machine maintain a backup history of the file system?
- B. What's target disk mode and how is it engaged?
- C. What's a network location? Who can access network locations?
- D. What's the best way to find which installations have taken place on the system?

Correct Answer: D

Section: (none)

Explanation

Explanation/Reference:

Explanation:

QUESTION 130

What's the security risk of enabling client sharing services?

- A. If a network device needs to send data to another network device on the same LAN, it addresses the outgoing packets based on the destination device's MAC address.
- B. Assuming the default settings for OS X, a standard user can only configure directly attached or local network printers from the Print dialog. Also, the appropriate drivers must be installed before the standard user configuring the printer.
- C. Any application that supports Auto Save and the Finder can manage document locking.
- D. If a client sharing service is compromised, an unauthorized user can control your Mac and execute unwanted applications or processes.

Correct Answer: D

Section: (none)

Explanation

Explanation/Reference:

actual answer.

QUESTION 131

What is a valid reason to start up a Mac in verbose mode?

- A. To view the startup process details

- B. To present a command-line login
 - C. To display hints for the recovery key for a FileVault 2 volume
 - D. To display the firmware password
- Real 38
Apple 9L0-415 Exam

Correct Answer: A

Section: (none)

Explanation

Explanation/Reference:

verified answer.

QUESTION 132

When an OS X computer starts up and a standard user logs in, in what order do the three components below launch?

- A. 1. login items
2. launch agents
3. launch daemons
- B. 1. launch agents
2. login items
3. launch daemons
- C. 1. launch daemons
2. launch agents
3. login items
- D. 1. launch daemons
2. login items
3. launch agents

Correct Answer: D

Section: (none)

Explanation

Explanation/Reference:

Explanation:

QUESTION 133

Real 39

Apple 9L0-415 Exam

Along with IMAP, POP, and SMTP, which protocol does the Mail application in OS X Mountain Lion support?

- A. MAPI
- B. Exchange Web Services
- C. CalDAV
- D. WebDAV

Correct Answer: B

Section: (none)

Explanation

Explanation/Reference:

Explanation:

QUESTION 134

Review the screenshot from FileVault preferences, and then answer the question below.



If you click Enable User for the Logan White account, what is the effect?

- A. FileVault 2 is enabled immediately for the Logan White account, and FileVault begins encrypting the Logan White home folder.
- B. You are prompted immediately to enter the login password for the Logan White account, after which, Logan White will be able to unlock and decrypt the system disk, and restart the computer.
- C. You are prompted immediately to enter an administrator password, after which, the user of the Logan White account will be able to unlock and decrypt the system disk, and restart the computer.
- D. At next login, the user of the Logan White account will be prompted to enter the login password, after which, the user will be able to unlock and decrypt the system disk, and restart the computer.

Correct Answer: C

Section: (none)

Explanation

Explanation/Reference:

Explanation:

Real 40

Apple 9L0-415 Exam

QUESTION 135

How do you identify the ownership and permissions of a file or folder in the Finder?

- A. A Service Set Identifier, or SSID, is used to identify a Wi-Fi network name and associated configuration.
- B. Standard UNIX file system permissions allow only for permissions to be set for one owner, one group, and all others. ACLs, on the other hand, allow for an essentially unlimited list of permissions entries.
- C. An item's ownership and permissions can be identified using the Info or Inspector windows in the Finder.
- D. A user's home folder permissions can be reset from the Reset Password application on OS X Recovery.

Correct Answer: C

Section: (none)

Explanation

Explanation/Reference:

given answer is correct.



<http://www.gratisexam.com/>

QUESTION 136

What OS X application is set as the default for opening archive files?

- A. By default on OS X, opens Archive Utility, the default application for opening zip archive files. Archive Utility, expands the contents of the zip archive next to the same location as the original zip archive.
- B. The default folders in a user's home folder are Desktop, Documents, Downloads, Library (hidden), Movies, Music, Pictures, and Public. Optional home folder items include Applications and Sites folders.

- C. The four erase options in Disk Utility are:
Fastest, which simply replaces the volume's directory structure
A second choice, which provides good security by writing zeros on top of all the previous disk data
A third choice, which provides even better security by writing three separate passes of information on top of the previous disk data
Most Secure, which provides the best security by writing seven separate passes of information on top of the previous disk data
- D. You can choose to ignore ownership on any non system volume. This will ignore any ownership rules and grant any logged-on user unlimited access to the contents of the volume. It's a potential security risk because it will allow any local user account to have full access to the volume, even if that user didn't originally mount the volume.

Correct Answer: A

Section: (none)

Explanation

Explanation/Reference:

Explanation:

QUESTION 137

AppleTalk works only with OS X v10.5 or earlier.

- A. What two volume formats are supported for an OS X system volume?
- B. What functionality does OS X support with the AppleTalk protocol?
- C. How can you acquire the OS X Mavericks installer?
- D. What application is used to manage keychain settings? Real 42
Apple 9L0-415 Exam

Correct Answer: B

Section: (none)

Explanation

Explanation/Reference:

Explanation:

QUESTION 138

Files with metadata may cause problems for NFS or WebDAV network file systems. Also, avoid AFP 2 services provided by Windows file servers.

- A. What steps should you use when troubleshooting application issues?
- B. What are the two primary traditional installation methods in OS X?
- C. How does network service order affect network connectivity?
- D. What are some known issues that arise when connecting to network file services?

Correct Answer: D

Section: (none)

Explanation

Explanation/Reference:

Explanation:

QUESTION 139

Review the screenshot, and then answer the question below.



You are manually restoring the home folder for a new user account, and see the message shown above. What will happen if you click Cancel?

- A. The existing home folder's name will be changed to match the one you entered in the new account sheet.
- B. The account name will be changed to the name of the existing home folder.
- C. You will be returned to the new account sheet in the Users & Group pane.
- D. The existing home folder will be displayed in the Finder with the name selected.

Correct Answer: C

Section: (none)

Explanation

Explanation/Reference:

Explanation:

QUESTION 140

You are configuring an OS X Mountain Lion computer that will be located in a public space. You want anyone to be able to log in and use Safari, but you do NOT want their Safari browser history to remain on the computer after users log out. Which action will let the computer function in the desired manner?

- A. Enable the Guest account for login.
- B. Create a managed account with Parental Controls.
- C. Create a Sharing Only account.
- D. Create a Guest account.

Correct Answer: ABD

Section: (none)

Explanation

Explanation/Reference:

Real 7

Apple 9L0-415 Exam

Explanation:

QUESTION 141

Which OS X Mountain Lion tool can help you create a strong password?

- A. Password Audit, accessible from Security preferences
- B. Password Assistant, accessible from Users & Groups preferences
- C. Security Audit, accessible from Directory Utility
- D. Password Checking, accessible from Parental Controls preferences

Correct Answer: B

Section: (none)

Explanation

Explanation/Reference:

Explanation:

QUESTION 142

Which statement is true of ALL THREE buses: USB, FireWire, AND Thunderbolt?

- A. The bus can operate at speeds of at least 4 Gbps.
- B. An Intel-based Mac can start up into target disk mode using this bus.
- C. The bus can host at least 64 peripherals.

D. An Intel-based Mac can start up from a drive on this bus.

Real 8

Apple 9L0-415 Exam

Correct Answer: D

Section: (none)

Explanation

Explanation/Reference:

Explanation:

QUESTION 143

A new 5 MB file was backed up by Time Machine yesterday. Today the file was edited, and has grown to 6 MB. It is about to be backed up by Time Machine again. How does Time Machine perform this backup?

- A. Time Machine copies the 6 MB file to the backup drive, and deletes the original backup copy of the file from the backup drive.
- B. Time Machine copies the 6 MB file to the backup drive, and keeps both the new backup file and the original backup file on the backup drive.
- C. Time Machine identifies the 1 MB of file changes, copies those changes to a new file on the backup drive, and keeps both the new backup file and the original backup file.
- D. Time Machine identifies the 1 MB of file changes, copies those changes to a new file on the backup drive, then creates a 500 KB parity file, and keeps all three files: the two new files representing the 1 MB of file changes, and the original backup file.

Correct Answer: C

Section: (none)

Explanation

Explanation/Reference:

Explanation:

QUESTION 144

Review the screenshot of part of a Network Utility window, and then answer the question below.

Which statement accurately interprets the Network Utility Lookup results shown above?

- A. A forward lookup of mainserver.pretendco.com returned the IP address 10.1.0.1.
- B. A reverse lookup of mainserver.pretendco.com returned the IP address 10.1.0.1.
- C. A reverse lookup of 10.1.0.1 returned the name mainserver.pretendco.com.
- D. The DNS server for mainserver.pretendco.com is pretendco.com.

Correct Answer: B

Section: (none)

Explanation

Explanation/Reference:

Explanation:

Real 10

Apple 9L0-415 Exam

QUESTION 145

In a default OS X Mountain Lion installation, which permission is assigned to the top level of each user's home folder to make it accessible to Guest users who log in locally?

- A. Everyone has Read & Write access.
- B. The staff group has Read & Write access.
- C. The wheel group has Read only access.
- D. Everyone has Read only access.

Correct Answer: D

Section: (none)

Explanation

Explanation/Reference:

Explanation:

QUESTION 146

When deleting a local user account, what three options does Users & Groups preferences give you for dealing with the user's home folder content?

- A. When a user changes his own account password, the system will keep his login keychain password in sync.
- B. When performing a Safe Boot, OS X doesn't load third-party KEXTs, third-party launch agents, third-party launch daemons, third-party startup items, third-party fonts, any user login items, or any user-specific launch agents.
- C. When deleting a local user account, OS X can archive the home folder content into a compressed disk image, leave the home folder content in the /Users folder, or delete the home folder content. Optionally, OS X can perform a secure erase on the home folder content.
- D. The Font Book application shows a small dot next to the name of any font that has duplicate resources.

Correct Answer: C

Section: (none)

Explanation

Explanation/Reference:

Explanation:

QUESTION 147

The Messages application allows for on-demand screen sharing that can be used even when the system screen sharing service isn't enabled.

- A. What options can you select from during the OS X Mavericks installation?
- B. Which application can provide on-demand screen sharing even when the Screen Sharing service isn't enabled?
- C. What application is used to manage keychain settings?
- D. Which optional firewall settings are available?

Correct Answer: B

Section: (none)

Explanation

Explanation/Reference:

Explanation:

QUESTION 148

Real 80

Apple 9L0-415 Exam

Single-partition drives are easier to set up initially, but they aren't as flexible for administration and maintenance. Multiple-partition drives require repartitioning during setup, but provide several separate partitions, which can be used to segregate user data and host multiple operating systems.

- A. What are the five types of user accounts in OS X? How are they different?
- B. What are the requirements for purchasing applications via the Mac App Store?
- C. What are the four default top-level folders visible in the Finder?
- D. What are the advantages and disadvantages of using a single-partition disk with OS X? How about a multiple-partition disk?

Correct Answer: D

Section: (none)

Explanation

Explanation/Reference:

Explanation:

QUESTION 149

The Font Book application shows a small dot next to the name of any font that has duplicate resources.

- A. What happens during user logout?
- B. How is 802.1X configured on OS X systems?
- C. How can you identify duplicate fonts?
- D. How can you limit the use of Location Services?

Correct Answer: C

Section: (none)

Explanation

Explanation/Reference:

Explanation:

Real 81

Apple 9L0-415 Exam

QUESTION 150

A FileVault 2-protected system can be unlocked using the recovery key that was generated during the FileVault 2 setup process. This key can be entered during system startup, and will allow you to reset the user's account password.

- A. How can you select a new printer driver for a configured printer?
- B. How can you unlock a FileVault 2-protected system when all user accounts have lost their passwords?
- C. How can you ensure that previously deleted items are securely erased?
- D. How can you prevent a user from installing software updates?

Correct Answer: B

Section: (none)

Explanation

Explanation/Reference:

Explanation:

QUESTION 151

Disk Utility and System Information can both be used to gather information about storage devices.

- A. What OS X application is set as the default for opening archive files?
- B. Which keyboard shortcut can be used to temporarily choose another startup disk?
- C. Which two built-in OS X applications can be used to gather information about storage devices?
- D. Which application is used to examine open applications on OS X?

Correct Answer: C

Section: (none)

Explanation

Explanation/Reference:

Explanation:

QUESTION 152

The volume formats supported as system volumes for OS X are Mac OS Extended (Journaled) and Mac OS Extended (Journaled, Encrypted).

- A. What two volume formats are supported for an OS X system volume?
- B. What types of files are omitted from Time Machine backups?
- C. Which changes are made when OS X Safe Boots?
- D. What does OS X use bundles or packages for?

Real 82

Apple 9L0-415 Exam

Correct Answer: A

Section: (none)

Explanation

Explanation/Reference:

Explanation:

QUESTION 153

What's AirDrop, and how do you know if a specific Mac supports it?

- A. AirDrop provides a quick and easy method to share files locally via Wi-Fi. AirDrop creates a secure peer-to-peer network between local devices. You can verify that a Mac supports AirDrop from the Finder Go menu.
- B. Archive files are much simpler to create in the Finder and are compatible with third-party operating systems. Disk images are more difficult to create and manage, but they offer greater flexibility. Primarily, disk images can be easily modified and converted. However, OS X style disk images aren't compatible with third-party operating systems.
- C. The DNS service is used to translate host names to IP addresses via forward lookups and translate IP addresses to host names via reverse lookups. DNS is architected as a hierarchy of worldwide domain servers. Local DNS servers provide name resolution and possibly host names for local clients. These local DNS servers connect to DNS servers higher in the DNS hierarchy to resolve both unknown host names and host local domain names.
- D. Any account password reset process won't change any keychain passwords. Therefore, the user's keychains won't automatically open when the user logs in with her new password. The user will have to manually change her keychain passwords using the Keychain Access utility.

Correct Answer: A

Section: (none)

Explanation

Explanation/Reference:

Okay with the answer.

QUESTION 154

Bluetooth devices must be paired to each other for communication to occur. Bluetooth preferences in the System Preference application is responsible for pairing your Mac with Bluetooth peripherals. You can quickly open Bluetooth preferences from the Bluetooth status menu.

Real 69

Apple 9L0-415 Exam

- A. Which items aren't loaded when OS X Safe Boots?
- B. Which action must take place in order for a Mac to communicate with a Bluetooth peripheral? Where can this be configured?
- C. What are some privacy and security concerns with the Spotlight service?
- D. What two methods are used to hide items from the Finder?

Correct Answer: B

Section: (none)

Explanation

Explanation/Reference:

Explanation:

QUESTION 155

The diagnostic reporting feature automatically creates a diagnostic report log any time an application crashes or hangs. The diagnostic report log can be viewed immediately, reported to Apple via the Internet, or viewed later in the /Applications/Utilities/Console application.

- A. What does the Disk Utility Verify and Repair feature do?
- B. What does OS X use bundles or packages for?
- C. What does the diagnostic reporting feature do?
- D. What happens during user logout?

Correct Answer: C

Section: (none)

Explanation

Explanation/Reference:

Explanation:

QUESTION 156

If a connected peripheral doesn't appear in System Information, the issue is likely to be hardware related. Troubleshoot accordingly.

- A. What are the four default top-level folders visible in the Finder?
- B. How can you select a new printer driver for a configured printer?
- C. How can you encrypt a disk without losing its contents?
- D. What can you infer about a connected peripheral if it doesn't appear in the System Information application?

Correct Answer: D

Section: (none)

Explanation

Explanation/Reference:

Explanation:

QUESTION 157

Real 70

Apple 9L0-415 Exam

How is 802.1X configured on OS X systems?

- A. In OS X there are two configuration methods for 802.1X. The first method is automatic configuration via the selection of a Wi-Fi network that requires WPA/WPA2 Enterprise authentication. The second method is "semi-automatic" configuration via an 802.1X configuration profile provided by an administrator.
- B. A network client uses the subnet mask to determine whether the destination IP address is on the LAN. If the destination IP address isn't on the LAN, it's assumed the destination address is on another network, and the client sends the data to the IP address of the local network router. The network router then sends the data, via a WAN connection, on to another router that it thinks is closer to the destination. This continues across WAN connections from router to router until the data reaches its destination.
- C. In the Mac App Store, you can view the current Apple ID by selecting Store from the menu bar. You can get further details regarding this Apple ID, by selecting View My Account in the same menu.
- D. The Lookup tab of Network Utility allows you to test name resolution against the currently configured DNS server.

Correct Answer: A

Section: (none)

Explanation

Explanation/Reference:

Explanation:

QUESTION 158

How do you engage Quick Look? Which applications support it?



<http://www.gratisexam.com/>

- A. The Privacy pane of Security & Privacy preferences can be used to allow or disallow applications' access to Location Services, Contacts, Calendars, Reminders, social network services, and Accessibility application access.
- B. Quick Look is engaged by simply pressing the Space bar when a document is selected. Applications that support Quick Look include the Finder, Time Machine, Mail, and most open and save browser dialogs.
- C. The Activity Monitor application is used to monitor open processes and applications.
- D. You can use the System Information application to easily scan all the appropriate application locations and return a list of installed applications.

Correct Answer: B

Section: (none)

Explanation

Explanation/Reference:

Explanation:

QUESTION 159

What are four common issues that can interrupt network services on a Mac computer?

Real 71

Apple 9L0-415 Exam

- A. To verify a specific service is available from a service provider, first use the Network Utility Ping tab to verify basic connectivity. Then use the Network Utility Port Scan tab to verify the specific service port(s) are open. You should always limit the port scan to the specific ports required for the network service you're testing.
- B. Four common issues that can interrupt network services on a Mac are:
 - Ethernet connectivity issues, which can cause the hardware network interface to become inactive or introduce excessive packet errors
 - Wi-Fi connectivity issues caused by the selection of an improper Wi-Fi network or excessive wireless interference
 - DHCP service issues, which prevent proper TCP/IP configuration · DNS service issues, which prevent host name resolution
- C. Migration Assistant can migrate information from other OS X systems, Windows systems, and other disks, including Time Machine backups.
- D. Review Network preferences, review the Network Utility statistics, and attempt to connect to different network services.

Correct Answer: B

Section: (none)

Explanation

Explanation/Reference:

well answered.

QUESTION 160

It depends on the printer. From Printing & Scanning preferences, sometimes you can simply select a new printer driver from the Options & Supplies dialog. In many cases though, to select a new printer driver for a configured printer you must delete and then re-add the printer.

- A. How can you identify if a Mac requires a firmware update?
- B. How can you reset a user's home folder permissions?
- C. How can you select a new printer driver for a configured printer?
- D. How can you identify duplicate fonts?

Correct Answer: C

Section: (none)

Explanation

Explanation/Reference:

Explanation:

QUESTION 161

What does the Disk Utility Verify and Repair feature do?

- A. The system version, build number, and hardware serial number are located in the About This Mac dialog or the login screen. The system version number defines the specific version of OS X currently installed. The system build number is an even more specific identifier used primarily by developers. Finally, the hardware serial number is a unique number used to identify your specific Real 72 Apple 9L0-415 Exam Mac.
- B. The Disk Utility Verify and Repair feature is used to verify or repair the partition scheme and directory structure of a volume. These elements contain the information used to locate files and folders on the volume.
- C. The Traceroute tab of Network Utility allows you to verify the connection hops between your Mac and a remote host.
- D. The master password is used to reset local account passwords.

Correct Answer: B

Section: (none)

Explanation

Explanation/Reference:

Explanation:

QUESTION 162

How can you identify the MAC addresses for all the Mac computer's network interfaces?

- A. You can identify all the MAC addresses for the Mac computer's network interfaces from the Info pane of Network Utility.
- B. The firmware initializes the Mac computer's hardware and locates the booter file on a system volume. The Power-On Self-Test (POST) checks for basic hardware functionality when the Mac powers on.
- C. The network service order list is used to determine the primary network service interface if there is more than one active service. All network traffic that isn't better handled via local connection to an active network service interface is sent to the primary network service interface. So in most cases all WAN traffic, Internet traffic, and DNS resolution is sent through the primary network service interface.
- D. Time Machine can back up to any Mac OS Extended volume or network shares hosted from Time Capsule or OS X Server.

Correct Answer: A

Section: (none)

Explanation

Explanation/Reference:

Explanation:

QUESTION 163

You can enable printer sharing from Print & Scan or Sharing preferences. Note that Windows clients may need additional drivers to access the Mac computer's shared printers via the IPP protocol.

- A. What are account attributes?
- B. How can you limit the use of Location Services?
- C. How do you share printers with other users?
- D. How can you identify duplicate fonts?

Real 73

Apple 9L0-415 Exam

Correct Answer: C

Section: (none)

Explanation

Explanation/Reference:

Explanation:

QUESTION 164

You can configure Time Machine to delete versions of files as soon as they reach a specified age.

- A. True
- B. False

Correct Answer: B

Section: (none)

Explanation

Explanation/Reference:

Explanation:

QUESTION 165

How does OS X Mountain Lion handle third-party, 32-bit kernel extensions (KEXTs)?

- A. It ignores them.
- B. It prompts the user with an option to convert them to 64-bit.
- C. It moves them to /Library/Extensions/Disabled/.
- D. It runs them in compatibility mode.

Correct Answer: B

Section: (none)

Explanation

Explanation/Reference:

Explanation:

QUESTION 166

The function of journaling in the Mac OS Extended (Journaled) file system is to _____.

- A. protect volume structure integrity in cases of unexpected shutdown
- B. provide a backup of user files
- C. provide support for resource forks, extended attributes, and metadata Real 18
Apple 9L0-415 Exam
- D. provide support for Spotlight searches

Correct Answer: A

Section: (none)

Explanation

Explanation/Reference:

Explanation:

QUESTION 167

You enable Stealth Mode on an OS X Mountain Lion computer's firewall. How does this affect the computer's behavior?

- A. The Mac will not register any services that are offered via Bonjour.
- B. The Mac will not allow outgoing connections for non-approved applications.
- C. The Mac will not respond to incoming connection requests.
- D. The Mac will not respond to diagnostic probes such as ping.

Correct Answer: D

Section: (none)

Explanation

Explanation/Reference:

Explanation:

QUESTION 168

How can a user with the short name anna exclude the /Users/anna/Downloads/ folder from Time Machine backups?

- A. Open Time Machine, choose Preferences from the Time Machine menu, click the Exclusions tab, click the Add (+) button, navigate to the /Users/anna/Downloads/ folder, and click Submit.
- B. Open the Time Machine pane of System Preferences, click Options, and add the /Users/anna/Downloads/ folder to the list of excluded items.
- C. Control-click the anna account's Downloads folder in the Finder, click the Sharing and Permissions disclosure button, click the Add (+) button, add the Time Machine user to the list of users, and set the Time Machine user's access to "No Access."
- D. In Terminal, execute the command `sudo defaults write /Library/Preferences/com.apple.TimeMachine excludedFolders -array-add /Users/anna/Downloads.`

Correct Answer: B

Section: (none)

Explanation

Explanation/Reference:

good choice of answer.

QUESTION 169

Real 19

Apple 9L0-415 Exam

On an optional configuration step in the Setup Assistant in OS X Mountain Lion, pressing Command-Q lets you skip the step.

- A. True
- B. False

Correct Answer: B

Section: (none)

Explanation

Explanation/Reference:

Explanation:

QUESTION 170

Which of these files will Time Machine, by default, NOT back up?

- A. An encrypted file that was created to track passwords
- B. A file that Time Machine identifies as conflicting with a previously backed-up file
- C. A Time Machine preference .plist file
- D. Any file in the Trash

Correct Answer: D

Section: (none)

Explanation

Explanation/Reference:

Explanation:

QUESTION 171

How can you display the contents of a hidden folder on a mounted volume in Finder?

- A. From the Go menu, choose "Go to Folder," enter the path to the hidden folder, and click Go.
- B. From the View menu, choose "Show hidden items."
- C. From the Finder menu, choose Preferences, and select "Show hidden items."
- D. Select the volume icon and choose "Show hidden items" from the Action menu.

Correct Answer: A

Section: (none)

Explanation

Explanation/Reference:

Explanation:

QUESTION 172

Which utility is on the OS X Recovery partition?

- A. Boot Camp Assistant
Real 20
Apple 9L0-415 Exam
- B. Console
- C. Firmware Password Utility
- D. Activity Monitor

Correct Answer: C

Section: (none)

Explanation

Explanation/Reference:

Explanation:

QUESTION 173

When a user opens an application, in what order does OS X Mountain Lion search the three Library folders in the local file system for resources that the application needs to access, such as fonts?

- A. 1. ~/Library/
2. /Library/
3. /System/Library/
- B. 1. /Library/
2. ~/Library/
3. /System/Library/
- C. 1. ~/Library/
2. /System/Library/
3. /Library/
- D. 1. /Library/
2. /System/Library/
3. ~/Library/

Correct Answer: A

Section: (none)

Explanation

Explanation/Reference:

reliable answer.

QUESTION 174

Which OS X startup keyboard shortcut causes the system to display the most detailed information about the startup process?

- A. Command-S
- B. Shift
- C. F12
- D. Command-V

Correct Answer: D

Section: (none)

Explanation

Explanation/Reference:

Explanation:

Real 21
Apple 9L0-415 Exam

QUESTION 175

Which tool lets you search log files?

- A. Network Utility
- B. Activity Monitor
- C. Console
- D. Archive Utility

Correct Answer: C

Section: (none)

Explanation

Explanation/Reference:

Explanation:

QUESTION 176

You have a Mac OS X v10.6.8 computer that has several user accounts. If you install OS X Mountain Lion without first erasing the target volume, what will happen to the 10.6.8 operating system and the existing user accounts?

- A. The Installer archives the 10.6.8 OS and installs Mountain Lion. It maintains the user accounts.
- B. The Installer upgrades the 10.6.8 OS to Mountain Lion. It maintains the user accounts.
- C. The Installer replaces the 10.6.8 OS with Mountain Lion. It archives the user accounts, but they can be restored manually.
- D. The Installer erases the 10.6.8 OS and installs Mountain Lion. It archives the user accounts, but they can be restored manually.

Correct Answer: B

Section: (none)

Explanation

Explanation/Reference:

Explanation:

QUESTION 177

You have a Mac OS X v10.6.8 computer that has several user accounts. If you install OS X Mountain Lion without first erasing the target volume, what will happen to the 10.6.8 operating system and the existing user accounts?

- A. The Installer archives the 10.6.8 OS and installs Mountain Lion. It maintains the user accounts.
- B. The Installer upgrades the 10.6.8 OS to Mountain Lion. It maintains the user accounts.
- C. The Installer replaces the 10.6.8 OS with Mountain Lion. It archives the user accounts, but they Real 22
Apple 9L0-415 Exam
can be restored manually.
- D. The Installer erases the 10.6.8 OS and installs Mountain Lion. It archives the user accounts, but they can be restored manually.

Correct Answer: B

Section: (none)

Explanation

Explanation/Reference:

Explanation:



<http://www.gratisexam.com/>