

BrainDumps.010-151 ,70.Q&A

Number: 010-151
Passing Score: 800
Time Limit: 120 min
File Version: 9.05



<http://www.gratisexam.com/>



010-151 Supporting Cisco Datacenter Networking Devices

- 👉 I have corrected few questions and now score will be 95% above Guaranteed.
- 👉 Finally, I got right questions for this exam and share with you guys. Best Wishes.
- 👉 Created Questions into Sections, now we can learn by Sections with this help.
- 👉 This is my first share of braindumps questions. Very helpful study center it is. Best Testing VCE it is.
- 👉 100% Valid in US, UK, Australia, India and Emirates. All my friends in group have these same questions.

Sections

1. General Networking Knowledge
2. Identify Cisco Equipment and Related Hardware
3. Describe Cisco NX OS Software Operation
4. Service related Knowledge

Exam A

QUESTION 1

Which type of optics module is supported by a 12-port 100 GE Cisco Nexus 7700 F3 Series I/O module?

- A. CPAK
- B. QSFP+
- C. SFP/SFP+
- D. CFP

Correct Answer: A

Section: Identify Cisco Equipment and Related Hardware

Explanation

Explanation/Reference:

QUESTION 2

Which Cisco MDS model supports the most Fibre Channel ports per chassis?

- A. MDS 9513
- B. MDS 9509
- C. MDS 9506
- D. MDS 9250i

Correct Answer: A

Section: Identify Cisco Equipment and Related Hardware

Explanation

Explanation/Reference:

QUESTION 3

Refer to the exhibit.



Which Cisco MDS chassis supports the 48-Port 16-Gbps Fibre Channel Switching Module?

- A. MDS 9509
- B. MDS 9513
- C. MDS 9710
- D. MDS 9506

Correct Answer: C

Section: Identify Cisco Equipment and Related Hardware

Explanation

Explanation/Reference:

QUESTION 4

Where do you find the model number of a Cisco MDS 9200 Series chassis?



<http://www.gratisexam.com/>

- A. on the top front of the chassis next to the serial number
- B. on the bottom front of the chassis next to the Cisco logo
- C. on the top front of the chassis next to the Cisco logo
- D. on the bottom front of the chassis next to the serial number

Correct Answer: C

Section: Identify Cisco Equipment and Related Hardware

Explanation

Explanation/Reference:

QUESTION 5

How do you find the serial number of a Cisco UCS 5108 Blade Server chassis?

- A. Use the Cisco UCS Admin.
- B. Use the Cisco UCS Application.
- C. Use the Cisco UCS Assistant.
- D. Use the Cisco UCS Manager.

Correct Answer: D

Section: Identify Cisco Equipment and Related Hardware

Explanation

Explanation/Reference:

QUESTION 6

Which three options are the minimum browser requirements to log into the Cisco CIMC GUI? (Choose three.)

- A. Java 1.6 or higher
- B. HTTP and HTTPS enabled
- C. Adobe Flash Player 10 or higher
- D. Internet Explorer version 10
- E. Firefox 26.0
- F. Adobe Shockwave Player 11 or higher

Correct Answer: ABC

Section: Describe Cisco NX OS Software Operation

Explanation

Explanation/Reference:

QUESTION 7

Refer to the exhibit.

Cisco Unified Computing System Manager - H16100-1

Fault Summary: 0 Critical, 49 Warning, 2 Error, 16 Info

Equipment: Servers, LAN, SAN, VM, Admin

Filters: All

Equipment View: Main Topology View, Fabric Interconnects, Servers, Thermal, Decommissioned, Firmware Management, Policies, Faults

Tools: Download Tasks, Packages, Images, Download Firmware, Update Firmware, Activate Firmware, Capability Catalog, Management Extension

| Name | Model | Running version | Startup Version | Backup Version | Update Status | Recovery Status |
|-------------------------------------|-------------------|-----------------------------|-----------------------------|----------------|---------------|-----------------|
| UCS Manager | | 4.2(1m) | 1.4(1m) | N/A | N/A | ready |
| Chassis 1 | Cisco UCS 5103 | | | | | |
| IO Modules | | | | | | |
| IO Module 1 | Cisco UCS 2104XP | 1.4(1m) | 1.4(1m) | 1.4(1) | ready | ready |
| IO Module 2 | Cisco UCS 2104XP | 1.4(1m) | 1.4(1m) | 1.4(1) | ready | ready |
| Servers | | | | | | |
| Server 1 (vince) | Cisco UCS B200 M1 | | | | | |
| Interface Cards | | | | | | |
| Interface Card 1 | Cisco UCS M81KR | 1.4(1m) | 1.4(1m) | 1.4(1) | ready | ready |
| EIOS | Cisco UCS B200 M1 | 5530C.1.4.1h.0.120820:01100 | 5530C.1.4.1h.0.120820:01100 | N/A | N/A | ready |
| CLMC Controller | Cisco UCS B200 M1 | 1.4(1m) | 1.4(1m) | 1.4(1) | ready | ready |
| Server 2 | Cisco UCS B200 M1 | | | | | |
| Server 6 | Cisco B200 M1 | | | | | |
| Server 7 | Cisco UCS B200 M1 | | | | | |
| Server 8 | Cisco UCS B200 M1 | | | | | |
| Fabric Interconnects | | | | | | |
| Fabric Interconnect A (primary) | Cisco UCS 6.40XP | 4.2(1)N1(1.4m) | 4.2(1)N1(1.4m) | N/A | N/A | ready |
| Kernel | | 4.2(1)N1(1.4m) | 4.2(1)N1(1.4m) | N/A | N/A | ready |
| System | | 4.2(1)N1(1.4m) | 4.2(1)N1(1.4m) | N/A | N/A | ready |
| Fabric Interconnect B (subordinate) | Cisco UCS 6.40XP | 4.2(1)N1(1.4m) | 4.2(1)N1(1.4m) | N/A | N/A | ready |
| Kernel | | 4.2(1)N1(1.4m) | 4.2(1)N1(1.4m) | N/A | N/A | ready |
| System | | 4.2(1)N1(1.4m) | 4.2(1)N1(1.4m) | N/A | N/A | ready |
| Redundant | | | | | | |
| Servers | | | | | | |

Which call-out accurately shows the current running version of the Cisco UCS Manager management software?

- A. A - UCS Manager running version 1.4(1m)
- B. B - IO Module 1 running version 1.4(1m)

- C. C - Interface Card 1 running version 1.4(1m)
- D. D - Kernel running version 4.2(1)N(1.4m)

Correct Answer: A

Section: Describe Cisco NX OS Software Operation

Explanation

Explanation/Reference:

QUESTION 8

Which command-line interface mode is best described by this prompt?

UCS-switch-A (nxos)#

- A. maintenance mode
- B. EXEC mode
- C. local management mode
- D. global configuration mode
- E. Cisco IOS mode

Correct Answer: B

Section: Describe Cisco NX OS Software Operation

Explanation

Explanation/Reference:

answer is corrected.

QUESTION 9

Which command can be used to exit to EXEC mode from this current mode?



<http://www.gratisexam.com/>

switch(config-if) #

- A. Ctrl-C
- B. Ctrl-L
- C. quit
- D. exit
- E. end

Correct Answer: E

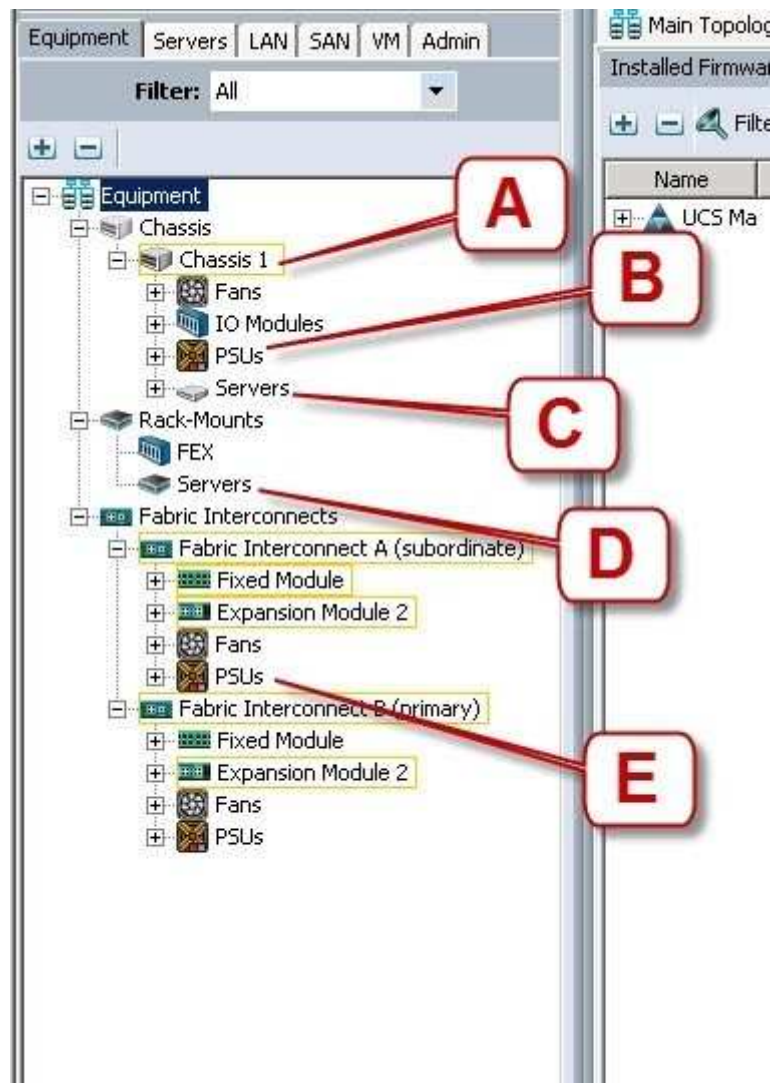
Section: Describe Cisco NX OS Software Operation

Explanation

Explanation/Reference:

QUESTION 10

Refer to the exhibit.



Where is the best place to see the power supply status of the blade server enclosure?

- A. A - Chassis 1
- B. B - Chassis 1 - PSUs

- C. C - Chassis1 - Servers
- D. D - Rack-Mounts - Servers
- E. E - Fabric Interconnects A - PSUs

Correct Answer: B

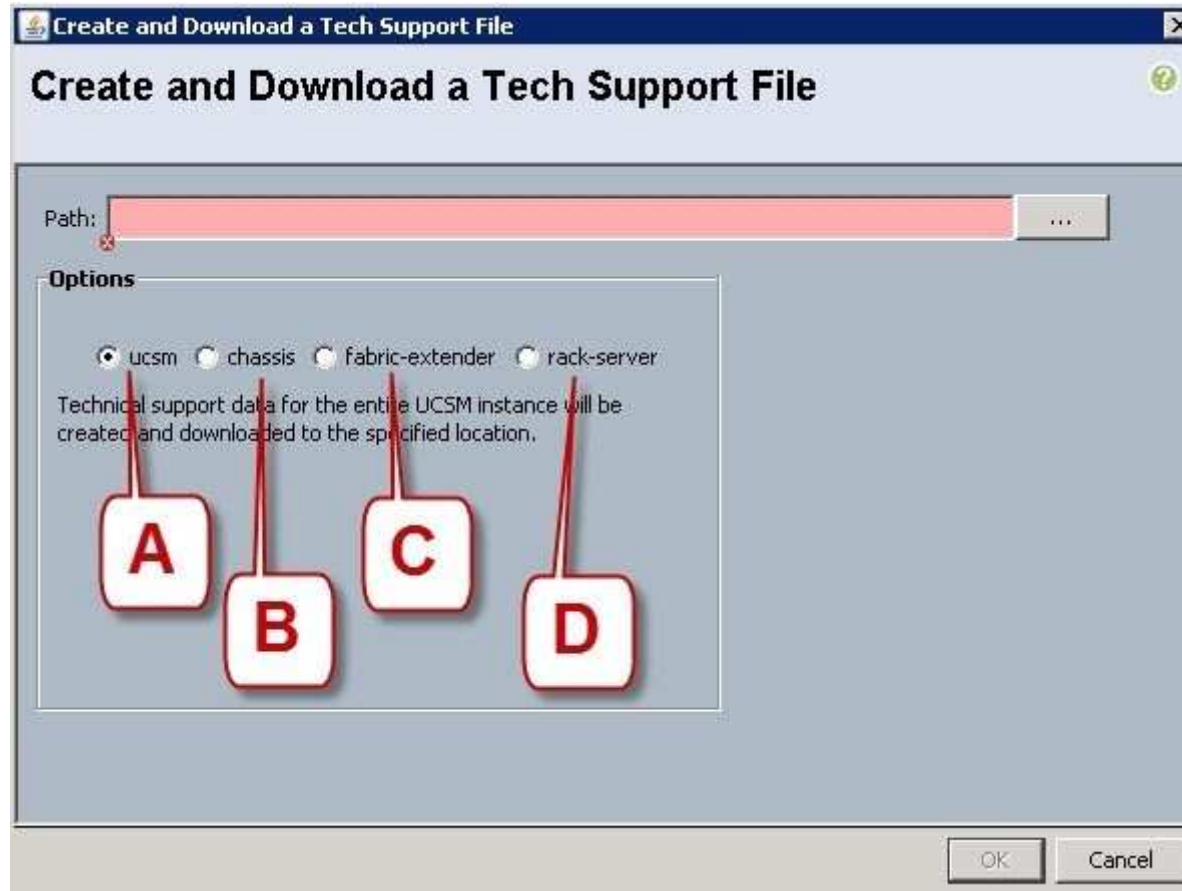
Section: Describe Cisco NX OS Software Operation

Explanation

Explanation/Reference:

QUESTION 11

Refer to the exhibit.



Which option should you select to get the output of the show tech-support detail command for the Cisco UCS B-Series blade?

- A. A - ucsm
- B. B - chassis
- C. C - fabric-extender
- D. D - rack-server

Correct Answer: B

Section: Describe Cisco NX OS Software Operation

Explanation

Explanation/Reference:

QUESTION 12

Which two commands display the version of Cisco NX-OS code that the device is currently running on? (Choose two.)

- A. show version
- B. show module
- C. show interface
- D. show boot
- E. show license

Correct Answer: AB

Section: Describe Cisco NX OS Software Operation

Explanation

Explanation/Reference:

QUESTION 13

Which command saves the active configuration to NVRAM?

- A. copy startup-config running-config
- B. copy active-config backup-config
- C. copy running-config startup-config
- D. copy backup-config active-config

Correct Answer: C

Section: Describe Cisco NX OS Software Operation

Explanation

Explanation/Reference:

QUESTION 14

Which Cisco NX-OS command displays kernel uptime?

- A. show module

- B. show version
- C. show license
- D. show boot
- E. show interface

Correct Answer: B

Section: Describe Cisco NX OS Software Operation

Explanation

Explanation/Reference:

QUESTION 15

Refer to the exhibit.

Fault Summary

0

47

2

16

EquipmentServersLANSANVMAdmin

Filter: All

Equipment

Chassis

Chassis 1 (Pack1)

Fans

IO Modules

IO Module 1

Backplane Ports

Fabric Ports

IO Module 2

PSUs

Psu 1

Psu 2

Psu 3

Psu 4

Servers

Server 1

Server 2

Server 6

Server 7

Server 8

Pack-Mounts

FEX

Servers

Fabric Interconnects

Fabric Interconnect A (subordinate)

Fixed Module

Expansion Module 2

Fans

PSUs

Fabric Interconnect B (primary)

Fixed Module

Expansion Module 2

NewOptionsPending ActivitiesExit

>> Equipment * Fabric Interconnects * Fabric Interconnect A (subordinate) Fabric Interconnect A (subordinate)

GeneralPhysical PortsFansPSUsPhysical DisplayFaultsEventsStatistics

Fault Summary

0

3

0

1

Status

Overall Status: operable

Ethernet Mode: switch

FC Mode: end-host

Actions

Internal Fabric Manager

LAN Uplinks Manager

NAS Appliance Manager

SAN Uplinks Manager

SAN Storage Manager

Enable All Ports

Disable All Ports

Enable All Server Ports

Disable All Server Ports

Enable All Uplink Ethernet Ports

Disable All Uplink Ethernet Ports

Enable All Uplink FC Ports

Disable All Uplink FC Ports

Physical Display

Up

Admin Down

Fail

Link Down

Properties

Name: A

Product Name: Cisco UCS 6140 P

Vendor: Cisco Systems, Inc

Revision: 0

Available Memory: 1.69G (GD)

PID: N10-SG200

Serial Number (SN): S51132202XD

Total Memory: 3.422 (GD)

Part Details

Local Storage Information

Access

High Availability Details

VLAN Port Count

Firmware

Boot loader version: v1.3.0(09/08/09)

kernel version: 4.2(1)N1(1.4m)

System Version: 4.2(1)N1(1.4m)

Package Version: 1.4(1m)A

Where is the best place to see bootflash free space?

- A. A - Available Memory
- B. B - Total Memory
- C. C - Local Storage Information
- D. D - High Availability Details

Correct Answer: C

Section: Describe Cisco NX OS Software Operation

Explanation

Explanation/Reference:

QUESTION 16

On the Sensors page from the CIMC view, which four tabs are displayed to view further information? (Choose four.)

- A. Power Supply
- B. Fan
- C. Memory
- D. CPU
- E. LEDs
- F. Temperature

Correct Answer: ABEF

Section: Describe Cisco NX OS Software Operation

Explanation

Explanation/Reference:

QUESTION 17

Which command syntax is correct to reset the admin password when the switch is in the kickstart prompt "switch(boot) #"?

- A. exec -> admin-password <password>
- B. connect local-mgmt -> admin-password <password>
- C. configure terminal -> admin-password <password>

- D. connect nxos -> admin-password <password>
- E. admin-password <password>

Correct Answer: C

Section: Describe Cisco NX OS Software Operation

Explanation

Explanation/Reference:

QUESTION 18

To do a password recovery on a Cisco NX-OS Switch, which option shows the correct syntax to display the bootflash contents at the switch(boot)#?



<http://www.gratisexam.com/>

- A. display bootflash:
- B. show bootflash:
- C. dir bootflash:
- D. find bootflash:

Correct Answer: C

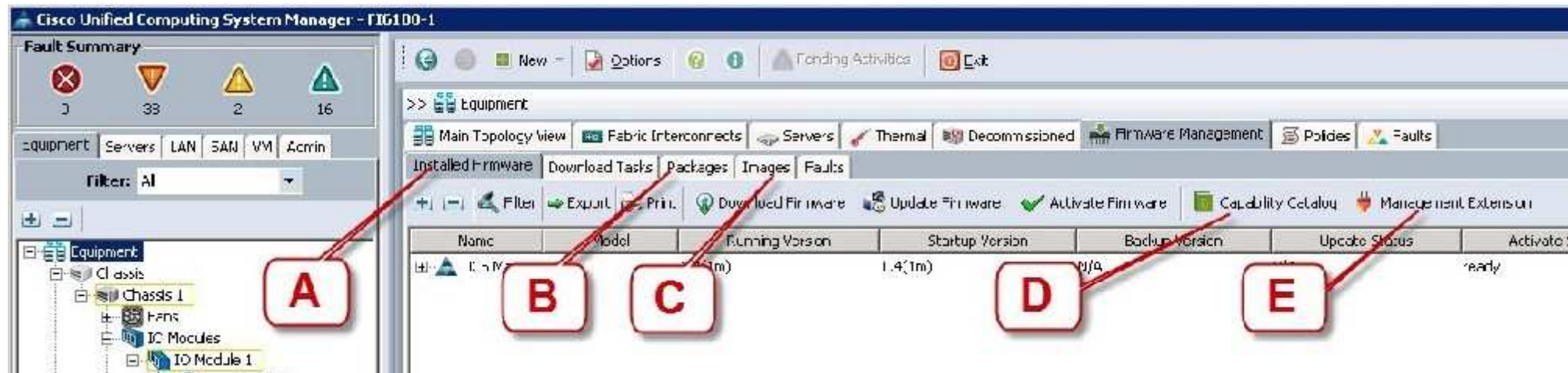
Section: Describe Cisco NX OS Software Operation

Explanation

Explanation/Reference:

QUESTION 19

Refer to the exhibit.



Where is the best place to find the B200 BIOS version used in a specific Cisco UCS Manager version?

- A. A - Installed Firmware
- B. B - Packages
- C. C - Images
- D. D - Capability Catalog
- E. E - Management Extension

Correct Answer: B

Section: Describe Cisco NX OS Software Operation

Explanation

Explanation/Reference:

QUESTION 20

Refer to the exhibit.

Cisco Unified Computing System Manager - F16100-1

Fault Summary

0 33 2 16

Equipment Servers LAN SAN VM Admin

Filter: All

Equipment

- Chassis
 - Chassis 1
 - Fans
 - IO Modules
 - IO Module 1
 - Backplane Ports
 - Fabric Ports
 - IO Module 2
 - PSUs
 - Servers
 - Rock Mounts
 - FCX
 - Servers
 - Fabric Interconnects
 - Fabric Interconnect A (primary)
 - Fixed Module
 - Appliance Ports
 - Hot Storage Ports
 - Monitoring Ethernet Ports
 - Server Ports
 - Unconfigured Ethernet Ports
 - Uplink Ethernet Ports
 - Expansion Module 2
 - Fans
 - PSUs
 - Fabric Interconnect B (subordinate)

General Physical Ports Fans PSUs Physical Display Faults Events Statistics

Fault Summary

0 3 0 4

Status

Overall Status: **operable**

Ethernet Mode: **switch**

FC Mode: **end-host**

Actions

- Internal Fabric Manager
- LAN Uplinks Manager
- NAS Appliances Manager
- SAN Uplinks Manager
- SAN Storage Manager
- Enable All Ports
- Disable All Ports
- Enable All Server Ports
- Disable All Server Ports
- Enable All Uplink Ethernet Ports
- Disable All Uplink Ethernet Ports
- Enable All Uplink FC Ports

Physical Display

Up Admin Link Down

Properties

Name: **A**

Product Name: **Cisco UCS 6140XP**

Version: **Cisco UCS 6140XP**

Revision: **0**

Available Memory: **1.952 GB**

PID: **Y10-56200**

Serial Number (SN): **551132202X0**

Total Memory: **3.422 GB**

Part Details

Total Storage Information

Access

High Availability Details

VLAN Port Count

Firmware

Boot-loader Version: **v1.0.0(09/00/09)**

Kernel Version: **4.2(1)N1(1.4m)**

System Version: **4.2(1)N1(1.4m)**

Where is the best place to see whether the system is ready for a Fabric Interconnect failover?

- A. A - Overall Status operable
- B. B - L1 Connection
- C. C - Part Details
- D. D - Access
- E. E - High Availability Details

Correct Answer: E

Section: Describe Cisco NX OS Software Operation

Explanation

Explanation/Reference:

Topic 4, Service related Knowledge

QUESTION 21

Which three tools are necessary to console into a Cisco UCS C-Series Rack-Mount Server? (Choose three.)

- A. Cisco DB-9-to-RJ-45 console cable
- B. laptop
- C. monitor
- D. keyboard
- E. KVM dongle
- F. USB serial adapter

Correct Answer: CDE

Section: Service related Knowledge

Explanation

Explanation/Reference:

answer is well modified.

QUESTION 22

Which three statements about powering down a Cisco UCS C-Series Rack-Mount Server to perform maintenance or replacement are true? (Choose three.)

- A. Standby power mode: Power is supplied only to the service processor and the cooling fans, and it is safe to power off the server from this mode.
- B. Power status LED. Green indicates that the server is in main power mode and can be safely powered off.
- C. Graceful shutdown: Press and release the power button. The operating system performs a graceful shutdown, and the server goes to standby mode, which is indicated by an amber power status LED.
- D. Disconnect the power cords from the power supplies in your server to completely power off the server.

- E. Only an emergency shutdown can be performed using the power button on the server front panel.
- F. The Cisco UCS C-Series Rack-Mount Server has only one power mode.

Correct Answer: ACD

Section: Service related Knowledge

Explanation

Explanation/Reference:

QUESTION 23

Which three components are hot swappable in a Cisco UCS Blade Server and Chassis? (Choose three.)

- A. Fabric Extender
- B. Power supply
- C. Heat sink
- D. SAS Hard Drive
- E. 2x8GB Kit DIMMs
- F. Mezzanine card

Correct Answer: ABD

Section: Service related Knowledge

Explanation

Explanation/Reference:

QUESTION 24

Which five things should the administrator verify after performing maintenance or replacing a blade server? (Choose five.)

- A. blade server status
- B. hard drive status
- C. host OS boot status
- D. CPU status
- E. mezzanine card status
- F. memory DIMM status
- G. fan and power status

Correct Answer: ABDEF

Section: Service related Knowledge

Explanation

Explanation/Reference:

corrected.

QUESTION 25

Which two statements about DIMM replacement in Cisco UCS Servers are true? (Choose two.)



<http://www.gratisexam.com/>

- A. In blade servers, DIMMs can be installed in either 1, 2, 4, or 8 DIMMs per channel.
- B. Rack-mount and blade servers have memory fault LEDs that indicate which DIMM requires attention.
- C. In servers that require pairs of DIMMs, the pairs must be identical (manufacturer, size, part #, and so on).
- D. If the memory in a server is not fully populated, you can install DIMMs in any open slot.

Correct Answer: AC

Section: Service related Knowledge

Explanation

Explanation/Reference:

QUESTION 26

Which action should the administrator take before physically removing a blade server for maintenance or replacement?

- A. Force the server to shut down.
- B. Disassociate the service profile.
- C. Decommission the server.
- D. Perform a graceful shutdown of the server.

Correct Answer: C

Section: Service related Knowledge

Explanation

Explanation/Reference:

QUESTION 27

Which two commands allow you to view the state of high availability between the two clustered Fabric Interconnects? (Choose two.)

- A. show cluster state extended
- B. show cluster extended-state
- C. show cluster HA status
- D. show cluster state

Correct Answer: BD

Section: Service related Knowledge

Explanation

Explanation/Reference:

QUESTION 28

When the Cisco UCS Manager is used to verify the B- or C-Series device, which two types of Overall Status are acceptable and do not indicate a failure? (Choose two.)

- A. Online
- B. OK
- C. Unassociated
- D. Active

Correct Answer: BC

Section: Service related Knowledge

Explanation

Explanation/Reference:

QUESTION 29

What is the correct path to verify the Overall Status of Chassis 1 | Server 3?

- A. Equipment Tab > Chassis > Chassis 1 > Servers > Server 3 Status tab
- B. Equipment Tab > Chassis > Chassis 1 > Servers > Server 3 General tab
- C. Equipment Tab > Chassis > Chassis 1 > Servers > Server 3 FSM tab
- D. Servers Tab > Chassis > Server 3 General tab
- E. Status Tab > Chassis > Chassis 1 > Servers > Server 3
- F. Admin Tab > Chassis > Chassis 1 > Servers > Server 3 General tab

Correct Answer: B

Section: Service related Knowledge

Explanation

Explanation/Reference:

QUESTION 30

If the Overall Status for a Cisco UCS B-Series Blade Server indicates a failure in the Cisco UCS Manager, such as discovery-failed, which statement is true?

- A. The server shuts down.
- B. The server automatically reboots reboot in 3 minutes.
- C. The endpoints on that server cannot be upgraded.
- D. The server is online, but the administrator cannot assign a service profile to that blade.

Correct Answer: C

Section: Service related Knowledge

Explanation

Explanation/Reference:

QUESTION 31

After installation or replacement of a Cisco UCS C-Series Rack-Mount Server, the host does not boot. Which four options should be verified? (Choose four.)



<http://www.gratisexam.com/>

- A. Verify the power source to the equipment.
- B. Check for loose HDD cables.
- C. Reseat the DIMMs, CPU, and PCI cards.
- D. Verify that power supplies are receiving power.
- E. Reseat the mezzanine card connector.
- F. Check the CPU sockets for bent pins.
- G. Check the Cisco IMC for fan faults.

Correct Answer: ACDF

Section: Service related Knowledge

Explanation

Explanation/Reference:

QUESTION 32

Which three troubleshooting procedures do you perform when there is no power to a Cisco UCS B250 M2 Blade Server? (Choose three.)

- A. Decommission and acknowledge the blade.
- B. Check the back of the blade to ensure that there is no damage to the connection that goes into chassis.
- C. Reseat the memory DIMMs.
- D. Check the CPU sockets for bent pins.
- E. Reseat the blade in the same slot in the chassis.
- F. Move the blade to another slot in the chassis.

Correct Answer: BEF

Section: Service related Knowledge

Explanation

Explanation/Reference:

QUESTION 33

Which tool does a network administrator not need when installing hardware?

- A. cable tester
- B. wrench set
- C. cable wraps
- D. needle-nose pliers
- E. PCMCIA memory
- F. soldering iron with grounded tip

Correct Answer: F

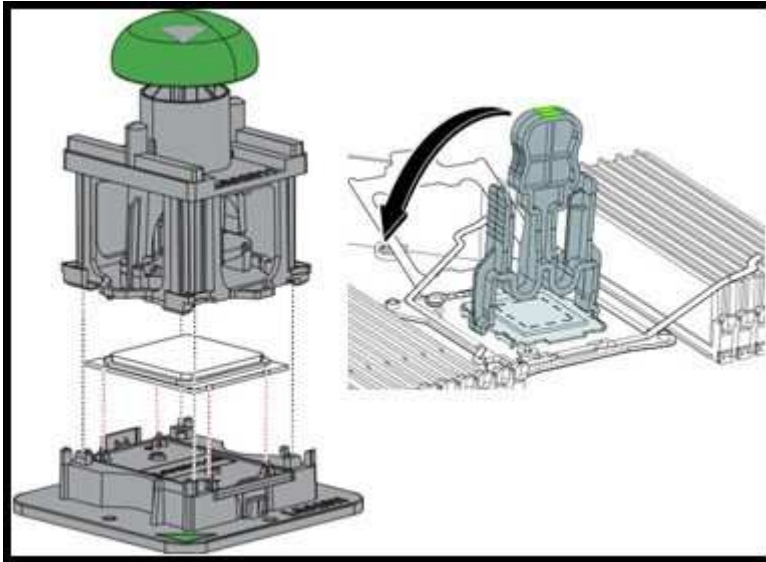
Section: Service related Knowledge

Explanation

Explanation/Reference:

QUESTION 34

Refer to the exhibit.



This image shows a CPU Pick-and-Place tool and a CPU Socket Protective Cap Removal tool. Which types of Cisco UCS servers and Intel Xeon processors do these tools support?

- A. Cisco UCS B22 Blade Server, C22 Rack Server, and C24 Rack Server with Intel Xeon E5- 2400 Series processors
- B. Cisco UCS B22 Blade Server, C22 Rack Server, and C24 Rack Server with Intel Xeon E5- 2600 Series processors
- C. Cisco UCS B200 M3 Blade Server, B420 M3 Blade Server, C220 Rack Server, C240 Rack Server, and C420 Rack Server with Intel Xeon E5-2400 Series processors
- D. Cisco UCS B200 M3 Blade Server, B420 M3 Blade Server, C220 Rack Server, C240 Rack Server, and C420 Rack Server with Intel Xeon E5-2600 Series processors

Correct Answer: D

Section: Service related Knowledge

Explanation

Explanation/Reference:

QUESTION 35

Which two remote file system methods are used in the training material to transfer firmware to the Fabric Interconnect? (Choose two.)

- A. FTPS

- B. FTP
- C. TFTP
- D. RSH

Correct Answer: BC

Section: Service related Knowledge

Explanation

Explanation/Reference:

QUESTION 36

When a host firmware package policy is created, what must it be associated with to upgrade the BIOS?

- A. blade or blade pool
- B. service profile
- C. boot policy
- D. service template

Correct Answer: B

Section: Service related Knowledge

Explanation

Explanation/Reference:

QUESTION 37

Which three firmware components does the Host Upgrade Utility upgrade? (Choose three.)

- A. Fabric Interconnect firmware
- B. LAN on Motherboard
- C. Cisco UCS Manager
- D. CIMC
- E. System BIOS

Correct Answer: BDE

Section: Service related Knowledge

Explanation

Explanation/Reference:

QUESTION 38

On which three devices can the Host Upgrade Utility be performed? (Choose three.)

- A. C420
- B. C230
- C. B230
- D. B210
- E. C210
- F. B460
- G. C240

Correct Answer: AE

Section: Service related Knowledge

Explanation

Explanation/Reference:

QUESTION 39

Up to what speed can Category 5 UTP cable transmit data?

- A. 10 Mb/s
- B. 100 Mb/s
- C. 1000 Mb/s
- D. 10000 Mb/s

Correct Answer: C

Section: Service related Knowledge

Explanation

Explanation/Reference:

QUESTION 40

Up to what speed can Category 5e UTP cable transmit data?

- A. 10 Mb/s
- B. 100 Mb/s
- C. 1000 Mb/s
- D. 10000 Mb/s

Correct Answer: C

Section: Service related Knowledge

Explanation

Explanation/Reference:

QUESTION 41

What is the maximum distance that the 40GBASE-LR4 Ethernet standard can span?

- A. 550 m
- B. 10 km
- C. 40 km
- D. 80 km

Correct Answer: B

Section: Service related Knowledge

Explanation

Explanation/Reference:

QUESTION 42

Refer to the exhibit.



Which three options are features of the Cisco UCS 6248UP Fabric Interconnect front panel? (Choose three.)

- A. Console port
- B. FCoE port
- C. 10 Gb/s port
- D. Fan module
- E. USB port

Correct Answer: ADE

Section: Service related Knowledge

Explanation

Explanation/Reference:

QUESTION 43

Which two statements about the Cisco Nexus 5596UP switch are true? (Choose two.)

- A. Its power supplies and fan trays are hot-swappable.
- B. It supports unified ports.
- C. It is offered in a one-rack-unit form factor.
- D. It has one expansion slot.
- E. It supports up to 96 10G BASE-T ports.

Correct Answer: AB

Section: Service related Knowledge

Explanation

Explanation/Reference:

QUESTION 44

Which two Cisco Nexus switches provide the foundation of the Cisco Application Centric Infrastructure? (Choose two.)

- A. Cisco Nexus 7718 switch
- B. Cisco Nexus 9508 switch
- C. Cisco Nexus 7710 switch
- D. Cisco Nexus 93128TX switch
- E. Cisco Nexus 6004 switch

Correct Answer: BD

Section: Service related Knowledge

Explanation

Explanation/Reference:

QUESTION 45

Which type of optics module is supported by a 6-port 40 GE Cisco Nexus 7000 M2 Series I/O module?

- A. CPAK
- B. QSFP+
- C. SFP/SFP+
- D. CFP

Correct Answer: B

Section: Service related Knowledge

Explanation

Explanation/Reference:

QUESTION 46

How many 10GBASE-T port licenses are preinstalled on a Cisco Nexus 3064-32T?

- A. 16
- B. 32
- C. 48

D. 64

Correct Answer: B

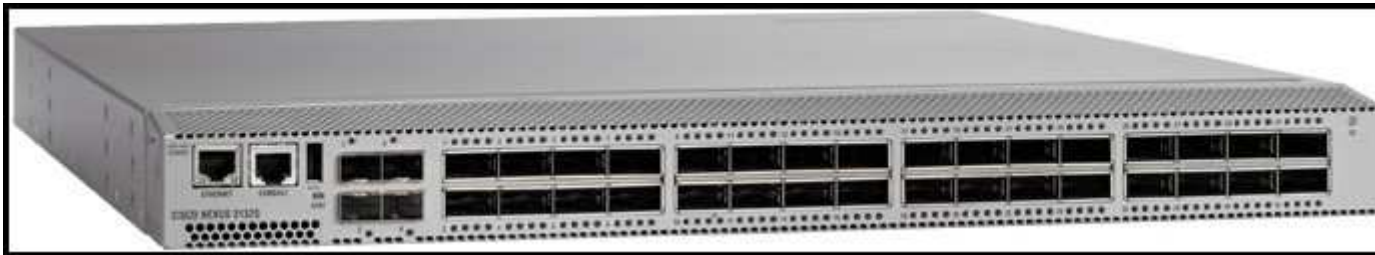
Section: Service related Knowledge

Explanation

Explanation/Reference:

QUESTION 47

Refer to the exhibit.



What is the name of this Cisco Nexus 3000 Series Switch?

- A. Cisco Nexus 3132Q
- B. Cisco Nexus 3172PQ
- C. Cisco Nexus 3524
- D. Cisco Nexus 3016

Correct Answer: A

Section: Service related Knowledge

Explanation

Explanation/Reference:

QUESTION 48

What is the maximum number of supervisor modules that the Cisco MDS 9710 Switch supports?



<http://www.gratisexam.com/>

- A. 1
- B. 2
- C. 4
- D. 6
- E. 8

Correct Answer: B

Section: Service related Knowledge

Explanation

Explanation/Reference:

QUESTION 49

Which device provides analysis of Fibre Channel traffic without any network disruption?

- A. Cisco MDS 9000 Data Analyzer Adapter
- B. Cisco MDS 9000 Port Analyzer Adapter
- C. Cisco MDS 9000 Channel Analyzer Device
- D. Cisco MDS 9000 Channel Analyzer Adapter

Correct Answer: B

Section: Service related Knowledge

Explanation

Explanation/Reference:

QUESTION 50

Which three steps do you perform to troubleshoot when a rack server powers on with no video? (Choose three.)

- A. Check that the front I/O dongle is properly seated.
- B. Check the front I/O cable connection to the motherboard.
- C. Check for memory subsystem failure.
- D. Verify the power source to equipment.
- E. Reseat the DIMMs, CPU, and PCI cards.

Correct Answer: ABC

Section: Service related Knowledge

Explanation

Explanation/Reference:

QUESTION 51

Which method is a TCP/IP-based protocol for establishing and managing connections between IP-based storage devices, hosts, and clients?

- A. FCIP
- B. iFCP
- C. iSCSI
- D. FCoE

Correct Answer: C

Section: General Networking Knowledge

Explanation

Explanation/Reference:

QUESTION 52

Which method does FCIP use to enable connectivity of geographically distributed Fibre Channel SANs over IP?

- A. routing
- B. tunneling
- C. handshaking
- D. transporting

Correct Answer: B

Section: General Networking Knowledge

Explanation

Explanation/Reference:

QUESTION 53

Which important feature on the front end is provided to the clients by multiple servers that access the same storage devices across the SAN?

- A. recovery
- B. redundancy
- C. resiliency
- D. security
- E. storage

Correct Answer: B

Section: General Networking Knowledge

Explanation

Explanation/Reference:

QUESTION 54

Which type of connection across the network does a SAN allow for multiple servers to access an unlimited amount of storage devices?

- A. any-to-many
- B. many-to-any
- C. any-to-any
- D. any-to-one
- E. one-to-any
- F. one-to-one

Correct Answer: C

Section: General Networking Knowledge

Explanation

Explanation/Reference:

QUESTION 55

What is the wire transmission speed for 100GBASE-ER4 Ethernet?

- A. 100 Mb/s
- B. 1 Gb/s
- C. 10 Gb/s
- D. 100 Gb/s

Correct Answer: D

Section: General Networking Knowledge

Explanation

Explanation/Reference:

updated.

QUESTION 56

Which two statements about PCIe are true? (Choose two.)

- A. The PCIe link is built around dedicated unidirectional couples of serial, point-to-point connections known as lanes.
- B. You can install a PCI Express x8 adapter into an x4 slot.
- C. The PCIe standard is a bus-based system in which all the devices share the same bidirectional, 32-bit or 64-bit, parallel signal path.
- D. The PCIe 1.0 standard doubles the transfer rate compared to PCIe 2.0.
- E. A link that is composed of four lanes is called an x4 link.

Correct Answer: AE

Section: General Networking Knowledge

Explanation

Explanation/Reference:

QUESTION 57

The Ethernet specification details several different fiber optic media types. What is the wire transmission speed for 100BASE-FX Ethernet?

- A. 10 Mb/s
- B. 100 Mb/s
- C. 1000 Mb/s
- D. 10000 Mb/s

Correct Answer: B

Section: General Networking Knowledge

Explanation

Explanation/Reference:

QUESTION 58

Which fiber optic cable type is used most often with a Subscriber connector?

- A. dual-mode
- B. single-mode
- C. straight-mode
- D. multi-mode
- E. subscriber-mode

Correct Answer: B

Section: General Networking Knowledge

Explanation

Explanation/Reference:

QUESTION 59

Which two statements about the Ethernet media are true? (Choose two.)

- A. A twisted-pair cable system has each pair of wires twisted together to reduce electromagnetic interference.
- B. Compared to multimode fiber, the single-mode fiber is designed for shorter distances with higher cost.
- C. 40 Gigabit Ethernet twinax cables deploy Enhanced Quad Small Form Factor Pluggable (QSFP+) connectors.
- D. The twinax cables can be found in either a shielded twisted-pair or an unshielded twisted-pair variation.

Correct Answer: AC

Section: General Networking Knowledge

Explanation

Explanation/Reference:

QUESTION 60

Which three statements about FCoE are true? (Choose three.)

- A. Allows Fibre Channel and Ethernet networks to share a single, integrated infrastructure.
- B. Encapsulates Fibre Channel frames into Ethernet frames, which allows them to run alongside traditional IP traffic.
- C. Increases capital costs due to the difficulty to manage.
- D. Consolidates I/O traffic in the data center.

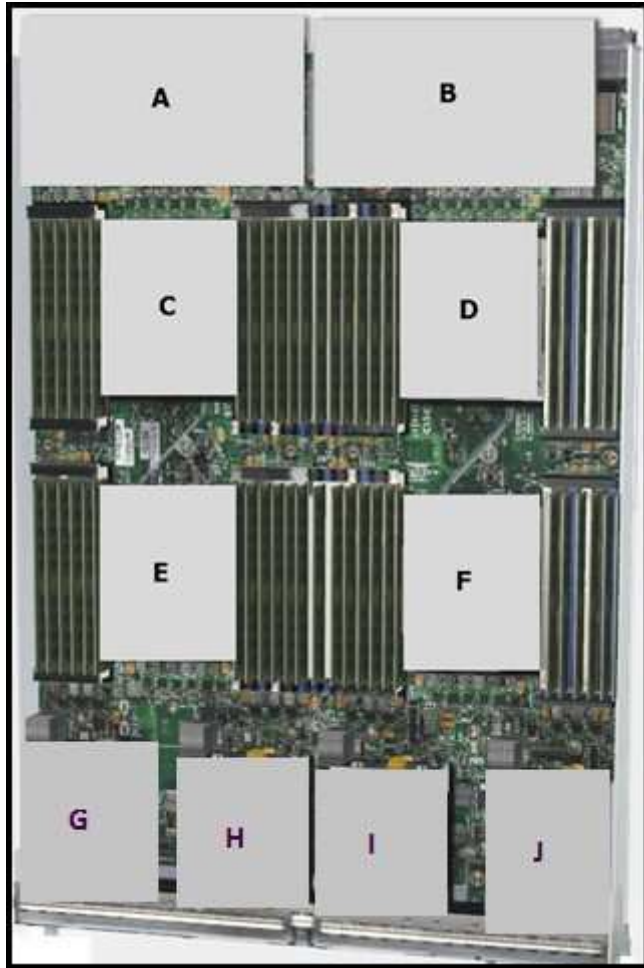
Correct Answer: ABD

Section: General Networking Knowledge

Explanation

Explanation/Reference:

QUESTION 61



Refer to the exhibit. Which item does F represent?

- A. HDD 1
- B. TFP Module
- C. SuperCap Module
- D. CPU 2
- E. CMOS Battery

Correct Answer: D

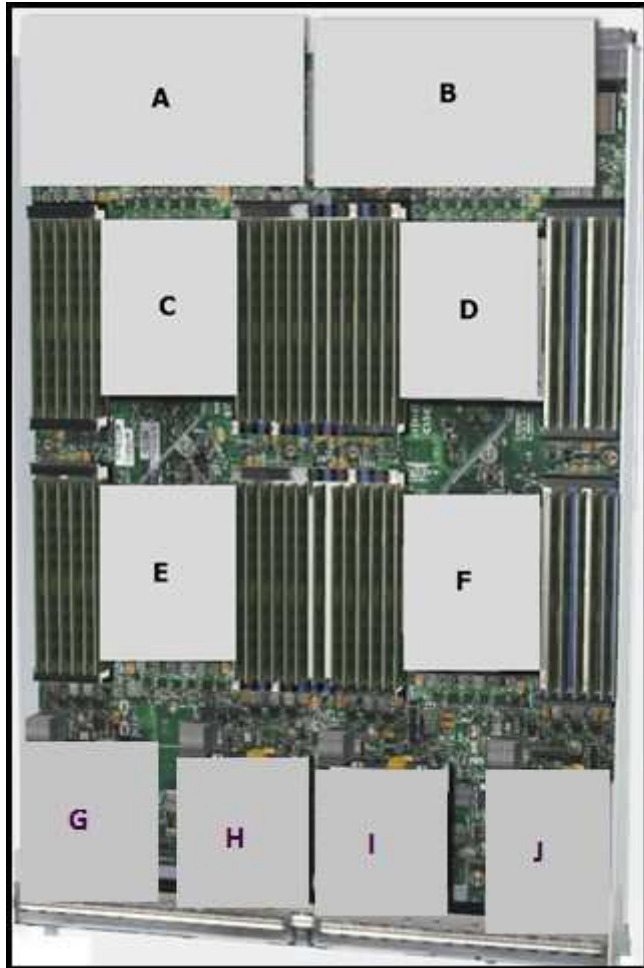
Section: Identify Cisco Equipment and Related Hardware

Explanation

Explanation/Reference:

QUESTION 62

Refer to the exhibit.



Which item does A represent?

- A. Emulex Adapter Card for Cisco UCS B420 M3 Blade Servers
- B. Virtual Interface Card for Cisco UCS B420 M3 Blade Servers
- C. mLOM for Cisco UCS B420 M3 Blade Servers
- D. Virtual Emulex Adapter Card for Cisco UCS B420 M3 Blade Servers
- E. SuperCap module for Cisco UCS B420 M3 Blade Servers

Correct Answer: C

Section: Identify Cisco Equipment and Related Hardware

Explanation

Explanation/Reference:

QUESTION 63

What does the system status LED look like when an over temperature or major alarm occurs on the Cisco UCS 6120XP Fabric Interconnect?

- A. Amber
- B. Red
- C. Blinking amber
- D. Blinking red

Correct Answer: C

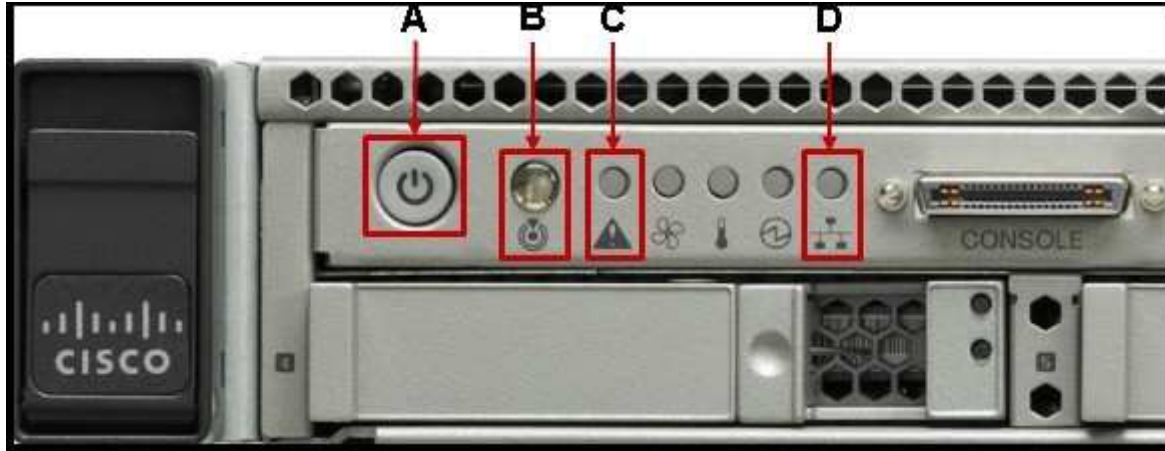
Section: Identify Cisco Equipment and Related Hardware

Explanation

Explanation/Reference:

QUESTION 64

Refer to the exhibit.



Which statement correctly identifies the front panel LEDs on the Cisco UCS C220 Server?

- A. A is power button and power status LED; B is identification button and LED; C is system status LED; D is network link activity LED.
- B. A is network link activity LED; B is system status LED; C is power button and power status LED; D is identification button and LED.
- C. A is system status LED; B is network link activity LED; C is power button and power status LED; D is identification button and LED.
- D. A is network link activity LED; B is system status LED; C is identification button and LED; D is power button and power status LED.

Correct Answer: A

Section: Identify Cisco Equipment and Related Hardware

Explanation

Explanation/Reference:

QUESTION 65

Which processor option is supported in the Cisco UCS C420 M3 Server?

- A. up to two Intel Xeon E5-4600 series multicore processors
- B. up to two Intel Xeon E7-4800 series multicore processors
- C. up to four Intel Xeon E5-4600 series multicore processors
- D. two or four Intel Xeon E7-8800 series multicore processors

Correct Answer: C

Section: Identify Cisco Equipment and Related Hardware

Explanation

Explanation/Reference:

QUESTION 66

Refer to the exhibit.



What is the name of this rack-mount server?

- A. Cisco UCS C220 Rack-Mount Server
- B. Cisco UCS C240 Rack-Mount Server
- C. Cisco UCS C420 Rack-Mount Server
- D. Cisco UCS C460 Rack-Mount Server

Correct Answer: C

Section: Identify Cisco Equipment and Related Hardware

Explanation

Explanation/Reference:

QUESTION 67

Which two major components does a Cisco Nexus 1000V Series Switch have? (Choose two.)

- A. Virtual Fiber Channel Module
- B. Virtual Ethernet Module
- C. Virtual Supervisor Module
- D. Virtual Memory Controller Module

E. Virtual Network Module

Correct Answer: BC

Section: Identify Cisco Equipment and Related Hardware

Explanation

Explanation/Reference:

QUESTION 68

Which cable is used to access the command-line interface of a Cisco UCS 6120XP Fabric Interconnects?

- A. KVM cable
- B. console cable
- C. Ethernet cable
- D. SFP+ Ethernet transceiver cable

Correct Answer: B

Section: Identify Cisco Equipment and Related Hardware

Explanation

Explanation/Reference:

corrected.

QUESTION 69

Which Cisco Nexus 5000 Series model supports 1/10G BASE-T ports?

- A. Cisco Nexus 5548P
- B. Cisco Nexus 5548UP
- C. Cisco Nexus 5596UP
- D. Cisco Nexus 5596T

Correct Answer: D

Section: Identify Cisco Equipment and Related Hardware

Explanation

Explanation/Reference:

QUESTION 70

Which supervisor module is supported by a Cisco Nexus 7700 Series Switch?

- A. first-generation supervisor module
- B. second-generation supervisor module (Sup2)
- C. second-generation supervisor enhanced module (Sup2E)
- D. third-generation supervisor enhanced module (Sup3E)

Correct Answer: C

Section: Identify Cisco Equipment and Related Hardware

Explanation

Explanation/Reference:



<http://www.gratisexam.com/>