

Passit4Sure.010-151,60.questions

Number: 010-151
Passing Score: 800
Time Limit: 120 min
File Version: 18.06



<http://www.gratisexam.com/>

PASSIT4SURE

010-151

Supporting Cisco Datacenter Networking Devices

- ➡ This dump is very valid to pass the exam..... Learn with case study questions .
- ➡ Fixed the Exhibit size and Drag drops/hot spot questions.
- ➡ Modified few questions, fixed few spelling mistakes and typos.
- ➡ Added Explanations and Exhibits most of the questions.
- ➡ This VCE alone will guarantee you a pass.

Sections

1. General Networking Knowledge
2. Identify Cisco Equipment and Related Hardware
3. Describe Cisco NX OS Software Operation
4. Service related Knowledge

Exam A

QUESTION 1

Which method is a TCP/IP-based protocol for establishing and managing connections between IP-based storage devices, hosts, and clients?

- A. FCIP
- B. iFCP
- C. iSCSI
- D. FCoE

Correct Answer: C

Section: General Networking Knowledge

Explanation

Explanation/Reference:

QUESTION 2

Which method does FCIP use to enable connectivity of geographically distributed Fibre Channel SANs over IP?

- A. routing
- B. tunneling
- C. handshaking
- D. transporting

Correct Answer: B

Section: General Networking Knowledge

Explanation

Explanation/Reference:

QUESTION 3

Which important feature on the front end is provided to the clients by multiple servers that access the same storage devices across the SAN?

- A. recovery
- B. redundancy
- C. resiliency
- D. security
- E. storage

Correct Answer: B

Section: General Networking Knowledge

Explanation

Explanation/Reference:

QUESTION 4

Which type of connection across the network does a SAN allow for multiple servers to access an unlimited amount of storage devices?

- A. any-to-many
- B. many-to-any
- C. any-to-any
- D. any-to-one

- E. one-to-any
- F. one-to-one

Correct Answer: C

Section: General Networking Knowledge

Explanation

Explanation/Reference:

QUESTION 5

What is the wire transmission speed for 100GBASE-ER4 Ethernet?



<http://www.gratisexam.com/>

- A. 100 Mb/s
- B. 1 Gb/s
- C. 10 Gb/s
- D. 100 Gb/s

Correct Answer: D

Section: General Networking Knowledge

Explanation

Explanation/Reference:

answer is corrected.

QUESTION 6

Which two statements about PCIe are true? (Choose two.)

- A. The PCIe link is built around dedicated unidirectional couples of serial, point-to-point connections known as lanes.
- B. You can install a PCI Express x8 adapter into an x4 slot.
- C. The PCIe standard is a bus-based system in which all the devices share the same bidirectional, 32-bit or 64-bit, parallel signal path.
- D. The PCIe 1.0 standard doubles the transfer rate compared to PCIe 2.0.
- E. A link that is composed of four lanes is called an x4 link.

Correct Answer: AE

Section: General Networking Knowledge

Explanation

Explanation/Reference:

QUESTION 7

Which command-line interface mode is best described by this prompt?

UCS-switch-A (nxos)#

- A. maintenance mode
- B. EXEC mode
- C. local management mode

- D. global configuration mode
- E. Cisco IOS mode

Correct Answer: B

Section: Describe Cisco NX OS Software Operation

Explanation

Explanation/Reference:

QUESTION 8

Which command can be used to exit to EXEC mode from this current mode?

switch(config-if) #

- A. Ctrl-C
- B. Ctrl-L
- C. quit
- D. exit
- E. end

Correct Answer: E

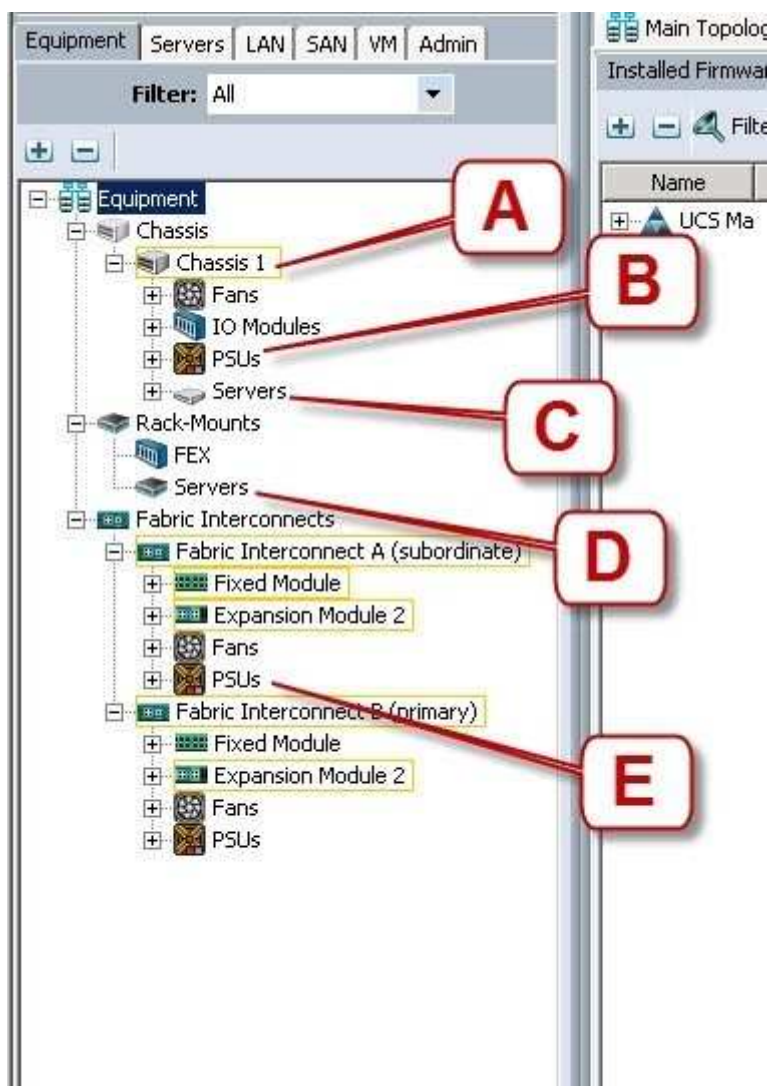
Section: Describe Cisco NX OS Software Operation

Explanation

Explanation/Reference:

QUESTION 9

Refer to the exhibit.



Where is the best place to see the power supply status of the blade server enclosure?

- A. A - Chassis 1
- B. B - Chassis 1 - PSUs
- C. C - Chassis1 - Servers
- D. D - Rack-Mounts - Servers
- E. E - Fabric Interconnects A - PSUs

Correct Answer: B

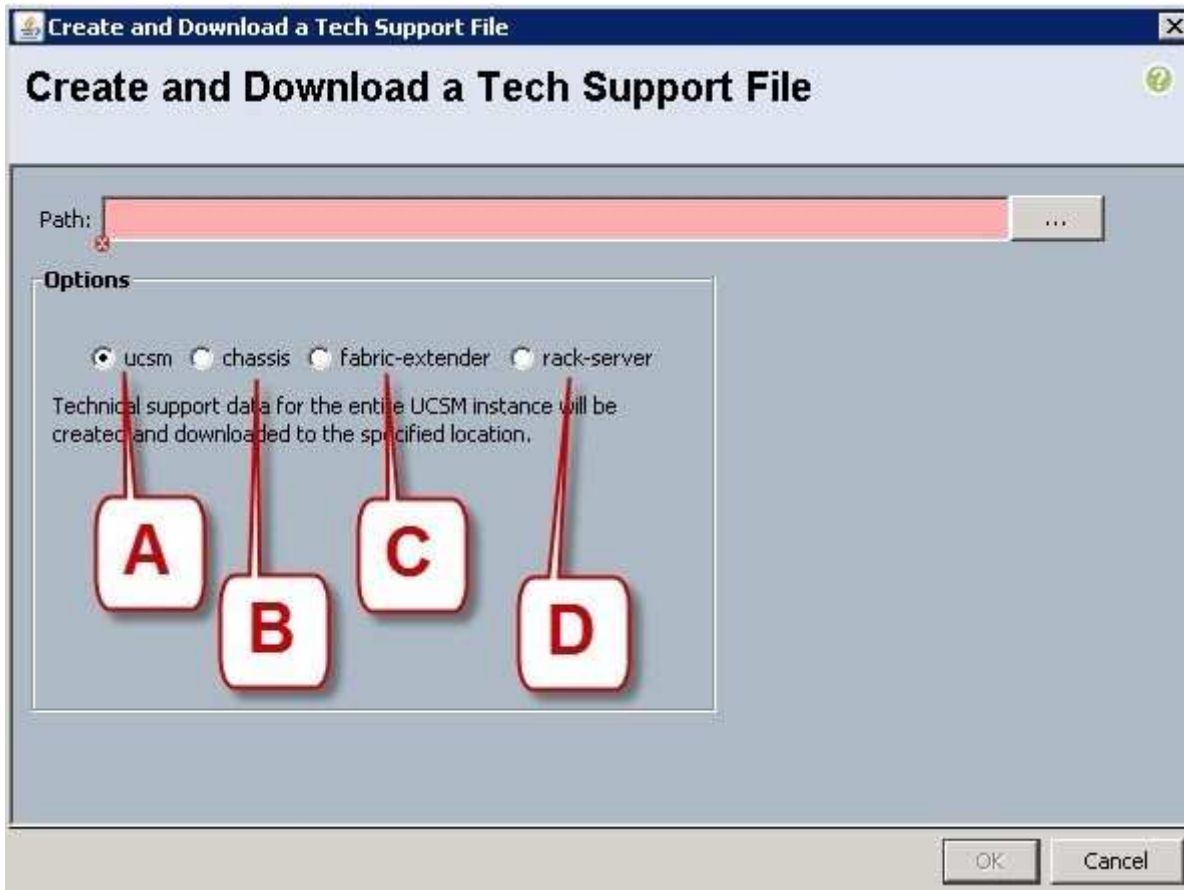
Section: Describe Cisco NX OS Software Operation

Explanation

Explanation/Reference:

QUESTION 10

Refer to the exhibit.



Which option should you select to get the output of the show tech-support detail command for the Cisco UCS B-Series blade?

- A. A - ucsm
- B. B - chassis
- C. C - fabric-extender
- D. D - rack-server

Correct Answer: B

Section: Describe Cisco NX OS Software Operation

Explanation

Explanation/Reference:

QUESTION 11

Which two commands display the version of Cisco NX-OS code that the device is currently running on? (Choose two.)

- A. show version
- B. show module
- C. show interface
- D. show boot
- E. show license

Correct Answer: AB

Section: Describe Cisco NX OS Software Operation

Explanation

Explanation/Reference:

well modified.

QUESTION 12

Which command saves the active configuration to NVRAM?

- A. copy startup-config running-config
- B. copy active-config backup-config
- C. copy running-config startup-config
- D. copy backup-config active-config

Correct Answer: C

Section: Describe Cisco NX OS Software Operation

Explanation

Explanation/Reference:

QUESTION 13

Which Cisco NX-OS command displays kernel uptime?

- A. show module
- B. show version
- C. show license
- D. show boot
- E. show interface

Correct Answer: B

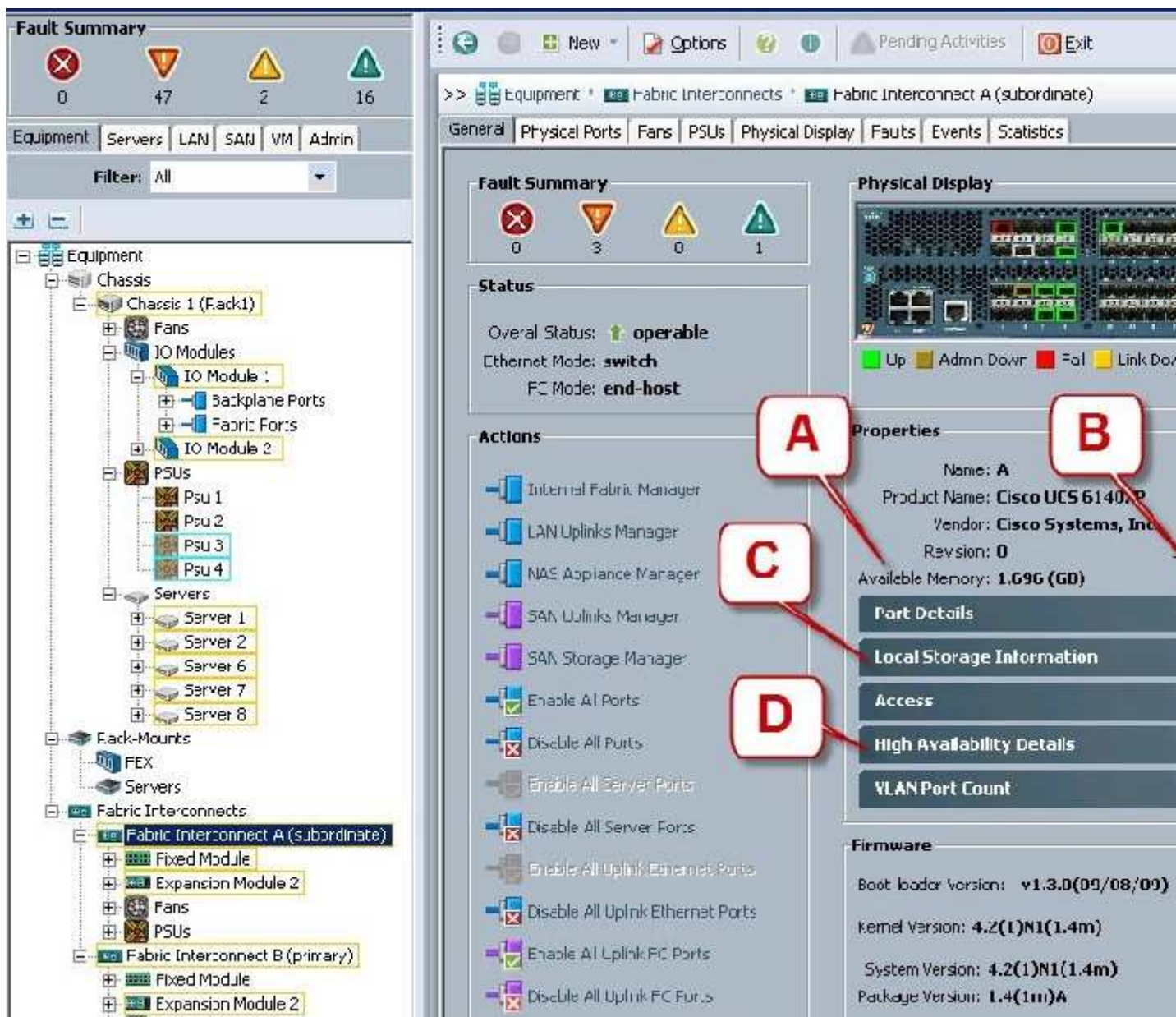
Section: Describe Cisco NX OS Software Operation

Explanation

Explanation/Reference:

QUESTION 14

Refer to the exhibit.



Where is the best place to see bootflash free space?

- A. A - Available Memory
- B. B - Total Memory
- C. C - Local Storage Information
- D. D - High Availability Details

Correct Answer: C

Section: Describe Cisco NX OS Software Operation

Explanation

Explanation/Reference:

QUESTION 15

Which three tools are necessary to console into a Cisco UCS C-Series Rack-Mount Server? (Choose three.)

- A. Cisco DB-9-to-RJ-45 console cable
- B. laptop

- C. monitor
- D. keyboard
- E. KVM dongle
- F. USB serial adapter

Correct Answer: CDE

Section: Service related Knowledge

Explanation

Explanation/Reference:

QUESTION 16

Which three statements about powering down a Cisco UCS C-Series Rack-Mount Server to perform maintenance or replacement are true? (Choose three.)

- A. Standby power mode: Power is supplied only to the service processor and the cooling fans, and it is safe to power off the server from this mode.
- B. Power status LED. Green indicates that the server is in main power mode and can be safely powered off.
- C. Graceful shutdown: Press and release the power button. The operating system performs a graceful shutdown, and the server goes to standby mode, which is indicated by an amber power status LED.
- D. Disconnect the power cords from the power supplies in your server to completely power off the server.
- E. Only an emergency shutdown can be performed using the power button on the server front panel.
- F. The Cisco UCS C-Series Rack-Mount Server has only one power mode.

Correct Answer: ACD

Section: Service related Knowledge

Explanation

Explanation/Reference:

QUESTION 17

Which three components are hot swappable in a Cisco UCS Blade Server and Chassis? (Choose three.)

- A. Fabric Extender
- B. Power supply
- C. Heat sink
- D. SAS Hard Drive
- E. 2x8GB Kit DIMMs
- F. Mezzanine card

Correct Answer: ABD

Section: Service related Knowledge

Explanation

Explanation/Reference:

QUESTION 18

Which five things should the administrator verify after performing maintenance or replacing a blade server? (Choose five.)

- A. blade server status
- B. hard drive status
- C. host OS boot status
- D. CPU status

- E. mezzanine card status
- F. memory DIMM status
- G: fan and power status

Correct Answer: ABDEF

Section: Service related Knowledge

Explanation

Explanation/Reference:

Answer: A, B, D, E, F

QUESTION 19

Which two statements about DIMM replacement in Cisco UCS Servers are true? (Choose two.)

- A. In blade servers, DIMMs can be installed in either 1, 2, 4, or 8 DIMMs per channel.
- B. Rack-mount and blade servers have memory fault LEDs that indicate which DIMM requires attention.
- C. In servers that require pairs of DIMMs, the pairs must be identical (manufacturer, size, part #, and so on).
- D. If the memory in a server is not fully populated, you can install DIMMs in any open slot.

Correct Answer: AC

Section: Service related Knowledge

Explanation

Explanation/Reference:

QUESTION 20

Which action should the administrator take before physically removing a blade server for maintenance or replacement?

- A. Force the server to shut down.
- B. Disassociate the service profile.
- C. Decommission the server.
- D. Perform a graceful shutdown of the server.

Correct Answer: C

Section: Service related Knowledge

Explanation

Explanation/Reference:

QUESTION 21

Which two commands allow you to view the state of high availability between the two clustered Fabric Interconnects? (Choose two.)

- A. show cluster state extended
- B. show cluster extended-state
- C. show cluster HA status
- D. show cluster state

Correct Answer: BD

Section: Service related Knowledge

Explanation

Explanation/Reference:

QUESTION 22

When the Cisco UCS Manager is used to verify the B- or C-Series device, which two types of Overall Status are acceptable and do not indicate a failure? (Choose two.)

- A. Online
- B. OK
- C. Unassociated
- D. Active

Correct Answer: BC

Section: Service related Knowledge

Explanation

Explanation/Reference:

QUESTION 23

What is the correct path to verify the Overall Status of Chassis 1 | Server 3?

- A. Equipment Tab > Chassis > Chassis 1 > Servers > Server 3 Status tab
- B. Equipment Tab > Chassis > Chassis 1 > Servers > Server 3 General tab
- C. Equipment Tab > Chassis > Chassis 1 > Servers > Server 3 FSM tab
- D. Servers Tab > Chassis > Server 3 General tab
- E. Status Tab > Chassis > Chassis 1 > Servers > Server 3
- F. Admin Tab > Chassis > Chassis 1 > Servers > Server 3 General tab

Correct Answer: B

Section: Service related Knowledge

Explanation

Explanation/Reference:

QUESTION 24

If the Overall Status for a Cisco UCS B-Series Blade Server indicates a failure in the Cisco UCS Manager, such as discovery-failed, which statement is true?

- A. The server shuts down.
- B. The server automatically reboots reboot in 3 minutes.
- C. The endpoints on that server cannot be upgraded.
- D. The server is online, but the administrator cannot assign a service profile to that blade.

Correct Answer: C

Section: Service related Knowledge

Explanation

Explanation/Reference:

QUESTION 25

After installation or replacement of a Cisco UCS C-Series Rack-Mount Server, the host does not boot. Which four options should be verified? (Choose four.)

- A. Verify the power source to the equipment.
- B. Check for loose HDD cables.
- C. Reseat the DIMMs, CPU, and PCI cards.
- D. Verify that power supplies are receiving power.
- E. Reseat the mezzanine card connector.
- F. Check the CPU sockets for bent pins.
- G. Check the Cisco IMC for fan faults.

Correct Answer: ACDF

Section: Service related Knowledge

Explanation

Explanation/Reference:

QUESTION 26

Which three troubleshooting procedures do you perform when there is no power to a Cisco UCS B250 M2 Blade Server? (Choose three.)

- A. Decommission and acknowledge the blade.
- B. Check the back of the blade to ensure that there is no damage to the connection that goes into chassis.
- C. Reseat the memory DIMMs.
- D. Check the CPU sockets for bent pins.
- E. Reseat the blade in the same slot in the chassis.
- F. Move the blade to another slot in the chassis.

Correct Answer: BEF

Section: Service related Knowledge

Explanation

Explanation/Reference:

QUESTION 27

Which tool does a network administrator not need when installing hardware?

- A. cable tester
- B. wrench set
- C. cable wraps
- D. needle-nose pliers
- E. PCMCIA memory
- F. soldering iron with grounded tip

Correct Answer: F

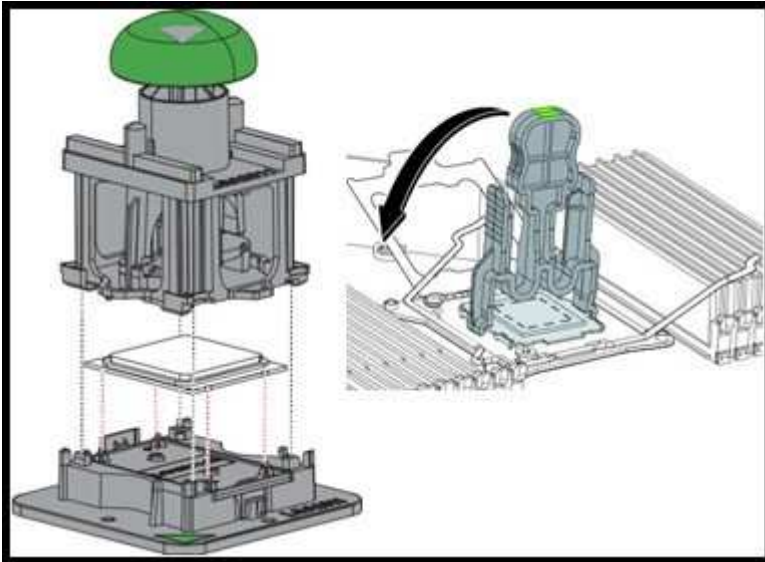
Section: Service related Knowledge

Explanation

Explanation/Reference:

QUESTION 28

Refer to the exhibit.



This image shows a CPU Pick-and-Place tool and a CPU Socket Protective Cap Removal tool. Which types of Cisco UCS servers and Intel Xeon processors do these tools support?

- A. Cisco UCS B22 Blade Server, C22 Rack Server, and C24 Rack Server with Intel Xeon E5- 2400 Series processors
- B. Cisco UCS B22 Blade Server, C22 Rack Server, and C24 Rack Server with Intel Xeon E5- 2600 Series processors
- C. Cisco UCS B200 M3 Blade Server, B420 M3 Blade Server, C220 Rack Server, C240 Rack Server, and C420 Rack Server with Intel Xeon E5-2400 Series processors
- D. Cisco UCS B200 M3 Blade Server, B420 M3 Blade Server, C220 Rack Server, C240 Rack Server, and C420 Rack Server with Intel Xeon E5-2600 Series processors

Correct Answer: D

Section: Service related Knowledge

Explanation

Explanation/Reference:

QUESTION 29

Which two remote file system methods are used in the training material to transfer firmware to the Fabric Interconnect? (Choose two.)

- A. FTPS
- B. FTP
- C. TFTP
- D. RSH

Correct Answer: BC

Section: Service related Knowledge

Explanation

Explanation/Reference:

QUESTION 30

When a host firmware package policy is created, what must it be associated with to upgrade the BIOS?

- A. blade or blade pool
- B. service profile
- C. boot policy

D. service template

Correct Answer: B

Section: Service related Knowledge

Explanation

Explanation/Reference:

QUESTION 31

Which three firmware components does the Host Upgrade Utility upgrade? (Choose three.)

- A. Fabric Interconnect firmware
- B. LAN on Motherboard
- C. Cisco UCS Manager
- D. CIMC
- E. System BIOS

Correct Answer: BDE

Section: Service related Knowledge

Explanation

Explanation/Reference:

QUESTION 32

On which three devices can the Host Upgrade Utility be performed? (Choose three.)

- A. C420
- B. C230
- C. B230
- D. B210
- E. C210
- F. B460
- G. C240

Correct Answer: AE

Section: Service related Knowledge

Explanation

Explanation/Reference:

QUESTION 33

Up to what speed can Category 5 UTP cable transmit data?

- A. 10 Mb/s
- B. 100 Mb/s
- C. 1000 Mb/s
- D. 10000 Mb/s

Correct Answer: C

Section: Service related Knowledge

Explanation

Explanation/Reference:

QUESTION 34

Up to what speed can Category 5e UTP cable transmit data?

- A. 10 Mb/s
- B. 100 Mb/s
- C. 1000 Mb/s
- D. 10000 Mb/s

Correct Answer: C

Section: Service related Knowledge

Explanation

Explanation/Reference:

QUESTION 35

What is the maximum distance that the 40GBASE-LR4 Ethernet standard can span?

- A. 550 m
- B. 10 km
- C. 40 km
- D. 80 km

Correct Answer: B

Section: Service related Knowledge

Explanation

Explanation/Reference:

QUESTION 36

Refer to the exhibit.



Which three options are features of the Cisco UCS 6248UP Fabric Interconnect front panel? (Choose three.)

- A. Console port
- B. FCoE port
- C. 10 Gb/s port
- D. Fan module
- E. USB port

Correct Answer: ADE

Section: Service related Knowledge

Explanation

Explanation/Reference:

QUESTION 37

Which two statements about the Cisco Nexus 5596UP switch are true? (Choose two.)

- A. Its power supplies and fan trays are hot-swappable.
- B. It supports unified ports.
- C. It is offered in a one-rack-unit form factor.
- D. It has one expansion slot.
- E. It supports up to 96 10G BASE-T ports.

Correct Answer: AB

Section: Service related Knowledge

Explanation

Explanation/Reference:

QUESTION 38

Which two Cisco Nexus switches provide the foundation of the Cisco Application Centric Infrastructure? (Choose two.)

- A. Cisco Nexus 7718 switch
- B. Cisco Nexus 9508 switch
- C. Cisco Nexus 7710 switch
- D. Cisco Nexus 93128TX switch
- E. Cisco Nexus 6004 switch

Correct Answer: BD

Section: Service related Knowledge

Explanation

Explanation/Reference:

updated.

QUESTION 39

Which type of optics module is supported by a 6-port 40 GE Cisco Nexus 7000 M2 Series I/O module?

- A. CPAK
- B. QSFP+
- C. SFP/SFP+
- D. CFP

Correct Answer: B

Section: Service related Knowledge

Explanation

Explanation/Reference:

QUESTION 40

How many 10GBASE-T port licenses are preinstalled on a Cisco Nexus 3064-32T?

- A. 16
- B. 32
- C. 48
- D. 64

Correct Answer: B

Section: Service related Knowledge

Explanation

Explanation/Reference:

QUESTION 41

Refer to the exhibit.



What is the name of this Cisco Nexus 3000 Series Switch?

- A. Cisco Nexus 3132Q
- B. Cisco Nexus 3172PQ
- C. Cisco Nexus 3524
- D. Cisco Nexus 3016

Correct Answer: A

Section: Service related Knowledge

Explanation

Explanation/Reference:

QUESTION 42

What is the maximum number of supervisor modules that the Cisco MDS 9710 Switch supports?

- A. 1
- B. 2
- C. 4
- D. 6
- E. 8

Correct Answer: B

Section: Service related Knowledge

Explanation

Explanation/Reference:

QUESTION 43

Which device provides analysis of Fibre Channel traffic without any network disruption?

- A. Cisco MDS 9000 Data Analyzer Adapter
- B. Cisco MDS 9000 Port Analyzer Adapter
- C. Cisco MDS 9000 Channel Analyzer Device
- D. Cisco MDS 9000 Channel Analyzer Adapter

Correct Answer: B

Section: Service related Knowledge

Explanation

Explanation/Reference:

perfected.

QUESTION 44

Which three steps do you perform to troubleshoot when a rack server powers on with no video? (Choose three.)

- A. Check that the front I/O dongle is properly seated.
- B. Check the front I/O cable connection to the motherboard.
- C. Check for memory subsystem failure.
- D. Verify the power source to equipment.
- E. Reseat the DIMMs, CPU, and PCI cards.

Correct Answer: ABC

Section: Service related Knowledge

Explanation

Explanation/Reference:

QUESTION 45

Which three statements about FCoE are true? (Choose three.)

- A. Allows Fibre Channel and Ethernet networks to share a single, integrated infrastructure.
- B. Encapsulates Fibre Channel frames into Ethernet frames, which allows them to run alongside traditional IP traffic.
- C. Increases capital costs due to the difficulty to manage.
- D. Consolidates I/O traffic in the data center.

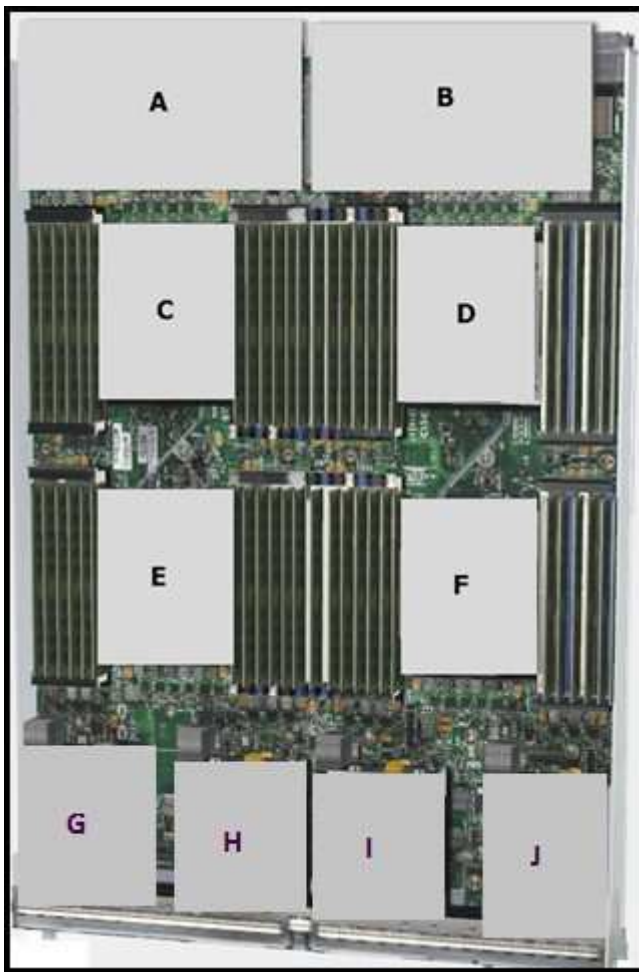
Correct Answer: ABD

Section: General Networking Knowledge

Explanation

Explanation/Reference:

QUESTION 46



Refer to the exhibit. Which item does F represent?

- A. HDD 1
- B. TFP Module
- C. SuperCap Module
- D. CPU 2
- E. CMOS Battery

Correct Answer: D

Section: Identify Cisco Equipment and Related Hardware

Explanation

Explanation/Reference:

QUESTION 47

Which Cisco MDS model supports the most Fibre Channel ports per chassis?

- A. MDS 9513
- B. MDS 9509
- C. MDS 9506
- D. MDS 9250i

Correct Answer: A

Section: Identify Cisco Equipment and Related Hardware

Explanation

Explanation/Reference:

QUESTION 48

Refer to the exhibit.



Which Cisco MDS chassis supports the 48-Port 16-Gbps Fibre Channel Switching Module?

- A. MDS 9509
- B. MDS 9513
- C. MDS 9710
- D. MDS 9506

Correct Answer: C

Section: Identify Cisco Equipment and Related Hardware

Explanation

Explanation/Reference:

answer is modified.

QUESTION 49

Where do you find the model number of a Cisco MDS 9200 Series chassis?

- A. on the top front of the chassis next to the serial number
- B. on the bottom front of the chassis next to the Cisco logo
- C. on the top front of the chassis next to the Cisco logo
- D. on the bottom front of the chassis next to the serial number

Correct Answer: C

Section: Identify Cisco Equipment and Related Hardware

Explanation

Explanation/Reference:

QUESTION 50

How do you find the serial number of a Cisco UCS 5108 Blade Server chassis?

- A. Use the Cisco UCS Admin.
- B. Use the Cisco UCS Application.
- C. Use the Cisco UCS Assistant.
- D. Use the Cisco UCS Manager.

Correct Answer: D

Section: Identify Cisco Equipment and Related Hardware**Explanation****Explanation/Reference:****QUESTION 51**

On the Sensors page from the CIMC view, which four tabs are displayed to view further information? (Choose four.)

- A. Power Supply
- B. Fan
- C. Memory
- D. CPU
- E. LEDs
- F. Temperature

Correct Answer: ABEF**Section: Describe Cisco NX OS Software Operation****Explanation****Explanation/Reference:****QUESTION 52**

Which command syntax is correct to reset the admin password when the switch is in the kickstart prompt "switch(boot) #"?

- A. exec -> admin-password <password>
- B. connect local-mgmt -> admin-password <password>
- C. configure terminal -> admin-password <password>
- D. connect nxos -> admin-password <password>
- E. admin-password <password>

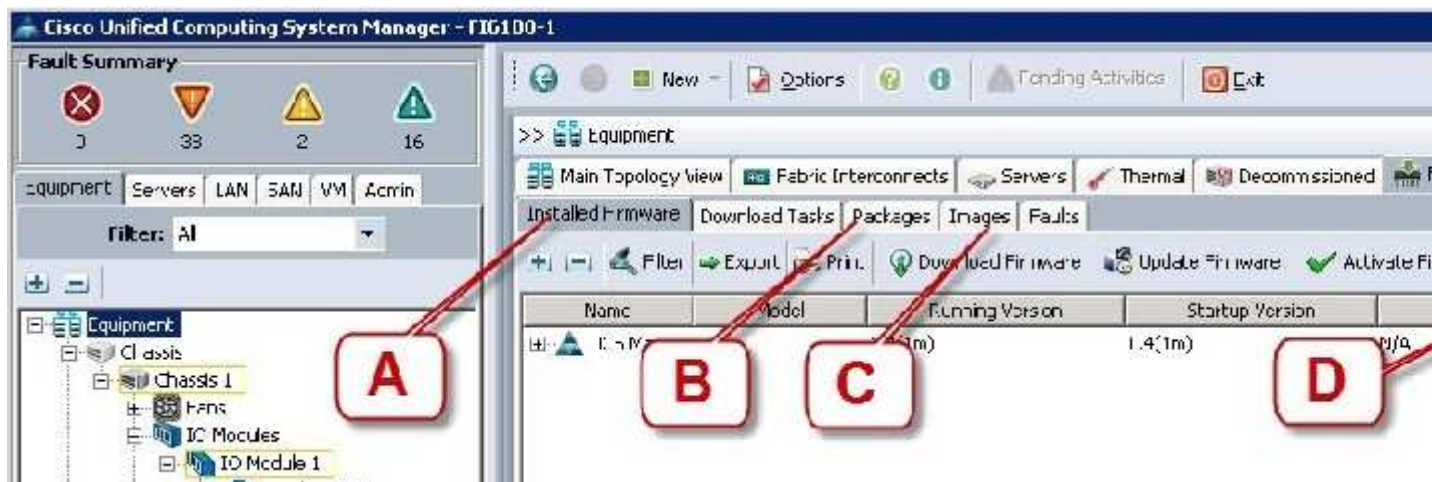
Correct Answer: C**Section: Describe Cisco NX OS Software Operation****Explanation****Explanation/Reference:****QUESTION 53**

To do a password recovery on a Cisco NX-OS Switch, which option shows the correct syntax to display the bootflash contents at the switch(boot)#?

- A. display bootflash:
- B. show bootflash:
- C. dir bootflash:
- D. find bootflash:

Correct Answer: C**Section: Describe Cisco NX OS Software Operation****Explanation****Explanation/Reference:****QUESTION 54**

Refer to the exhibit.



Where is the best place to find the B200 BIOS version used in a specific Cisco UCS Manager version?

- A. A - Installed Firmware
- B. B - Packages
- C. C - Images
- D. D - Capability Catalog
- E. E - Management Extension

Correct Answer: B

Section: Describe Cisco NX OS Software Operation

Explanation

Explanation/Reference:

QUESTION 55

Refer to the exhibit.



Where is the best place to see whether the system is ready for a Fabric Interconnect failover?

- A. A - Overall Status operable
- B. B - L1 Connection
- C. C - Part Details
- D. D - Access
- E. E - High Availability Details

Correct Answer: E

Section: Describe Cisco NX OS Software Operation

Explanation

Explanation/Reference:

Topic 4, Service related Knowledge

QUESTION 56

The Ethernet specification details several different fiber optic media types. What is the wire transmission speed for 100BASE-FX Ethernet?

- A. 10 Mb/s
- B. 100 Mb/s
- C. 1000 Mb/s

D. 10000 Mb/s

Correct Answer: B

Section: General Networking Knowledge

Explanation

Explanation/Reference:

QUESTION 57

Which fiber optic cable type is used most often with a Subscriber connector?

- A. dual-mode
- B. single-mode
- C. straight-mode
- D. multi-mode
- E. subscriber-mode

Correct Answer: B

Section: General Networking Knowledge

Explanation

Explanation/Reference:

QUESTION 58

Which two statements about the Ethernet media are true? (Choose two.)

- A. A twisted-pair cable system has each pair of wires twisted together to reduce electromagnetic interference.
- B. Compared to multimode fiber, the single-mode fiber is designed for shorter distances with higher cost.
- C. 40 Gigabit Ethernet twinax cables deploy Enhanced Quad Small Form Factor Pluggable (QSFP+) connectors.
- D. The twinax cables can be found in either a shielded twisted-pair or an unshielded twisted-pair variation.

Correct Answer: AC

Section: General Networking Knowledge

Explanation

Explanation/Reference:

QUESTION 59

Which three options are the minimum browser requirements to log into the Cisco CIMC GUI? (Choose three.)

- A. Java 1.6 or higher
- B. HTTP and HTTPS enabled
- C. Adobe Flash Player 10 or higher
- D. Internet Explorer version 10
- E. Firefox 26.0
- F. Adobe Shockwave Player 11 or higher

Correct Answer: ABC

Section: Describe Cisco NX OS Software Operation

Explanation

Explanation/Reference:

QUESTION 60

Refer to the exhibit.

The screenshot shows the Cisco Unified Computing System Manager interface. The left sidebar displays a tree view of the system components. The main pane shows a table of components with columns for Name, Model, Running version, and Startup version. The components are organized into a hierarchy: UCS Manager, Chassis 1, IO Modules, Servers, Fabric Interconnects, and Servers.

Name	Model	Running version	Startup version
UCS Manager		1.4(1m)	1.4(1m)
Chassis 1	Cisco UCS 5108		
IO Module 1	Cisco UCS 2104XP	1.4(1m)	1.4(1m)
IO Module 2	Cisco UCS 2104XP	1.4(1m)	1.4(1m)
Server 1 (vinco)	Cisco UCS B200 M1		
Interface Card 1	Cisco UCS B200 M1	1.4(1m)	1.4(1m)
EIOS	Cisco UCS B200 M1	5530 : 1.1.1.0.120320:01100	5530:1.1.1.0.120320:01100
CLMC Controller	Cisco UCS B200 M1	1.4(1m)	1.4(1m)
Server 2	Cisco UCS B200 M1		
Server 6	Cisco B200 M1		
Server 7	Cisco UCS B200 M1		
Server 8	Cisco UCS B200 M1		
Fabric Interconnect A (primary)	Cisco UCS 6.40XP		
Kernel		4.2(1)N1(1.4m)	4.2(1)N1(1.4m)
System		4.2(1)N1(1.4m)	4.2(1)N1(1.4m)
Fabric Interconnect B (subordinate)	Cisco UCS 6.40XP		
Kernel		4.2(1)N1(1.4m)	4.2(1)N1(1.4m)
System		4.2(1)N1(1.4m)	4.2(1)N1(1.4m)

Which call-out accurately shows the current running version of the Cisco UCS Manager management software?

- A. A - UCS Manager running version 1.4(1m)
- B. B - IO Module 1 running version 1.4(1m)
- C. C - Interface Card 1 running version 1.4(1m)
- D. D - Kernel running version 4.2(1)N(1.4m)

Correct Answer: A

Section: Describe Cisco NX OS Software Operation

Explanation

Explanation/Reference:



<http://www.gratisexam.com/>