

200-125.exam

Number: 200-125
Passing Score: 800
Time Limit: 120 min
File Version: 1.0



<http://www.gratisexam.com/>

Cisco

200-125

Cisco Certified Network Associate Exam

<http://www.gratisexam.com/>

Exam A

QUESTION 1

In which two formats can the IPv6 address fd15:0db8:0000:0000:0700:0003:400F:572B be written? (Choose two.)

- A. fd15:0db8:0000:0000:700:3:400F:527B
- B. fd15::db8::700:3:400F:527B
- C. fd15:db8:0::700:3:4F:527B
- D. fd15:0db8::7:3:4F:527B
- E. fd15:db8::700:3:400F:572B

Correct Answer: AE

Section: (none)

Explanation

Explanation/Reference:

Explanation:

QUESTION 2

When an interface is configured with PortFast BPDU guard, how does the interface respond when it receives a BPDU?

- A. It continues operating normally.
- B. It goes into a down/down state.
- C. It becomes the root bridge for the configured VLAN.
- D. It goes into an errdisable state.

Correct Answer: D

Section: (none)

Explanation

Explanation/Reference:

Explanation:

QUESTION 3

What are three characteristics of the TCP protocol? (Choose three.)

- A. It uses a single SYN-ACK message to establish a connection.
- B. The connection is established before data is transmitted.

- C. It ensures that all data is transmitted and received by the remote device.
- D. It supports significantly higher transmission speeds than UDP.
- E. It requires applications to determine when data packets must be retransmitted.
- F. It uses separate SYN and ACK messages to establish a connection.

Correct Answer: BCF

Section: (none)

Explanation

Explanation/Reference:

Explanation:

QUESTION 4

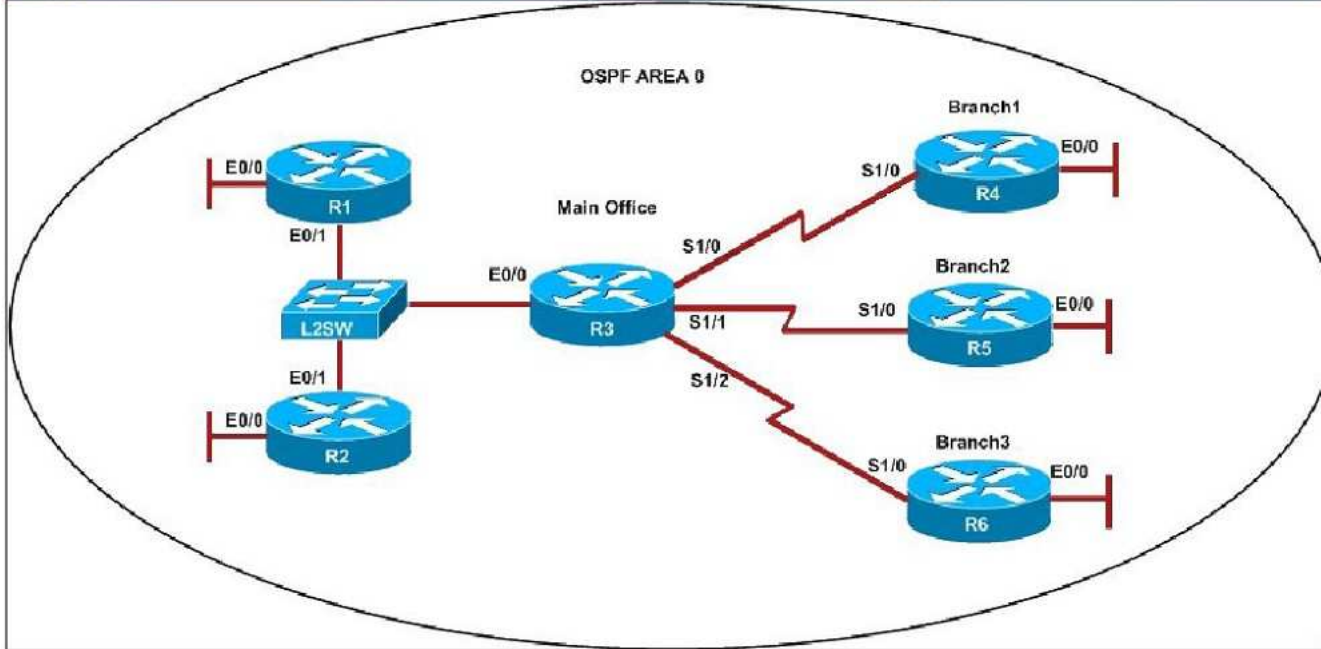
Scenario

Refer to the topology. Your company has decided to connect the main office with three other remote branch offices using point-to-point serial links.

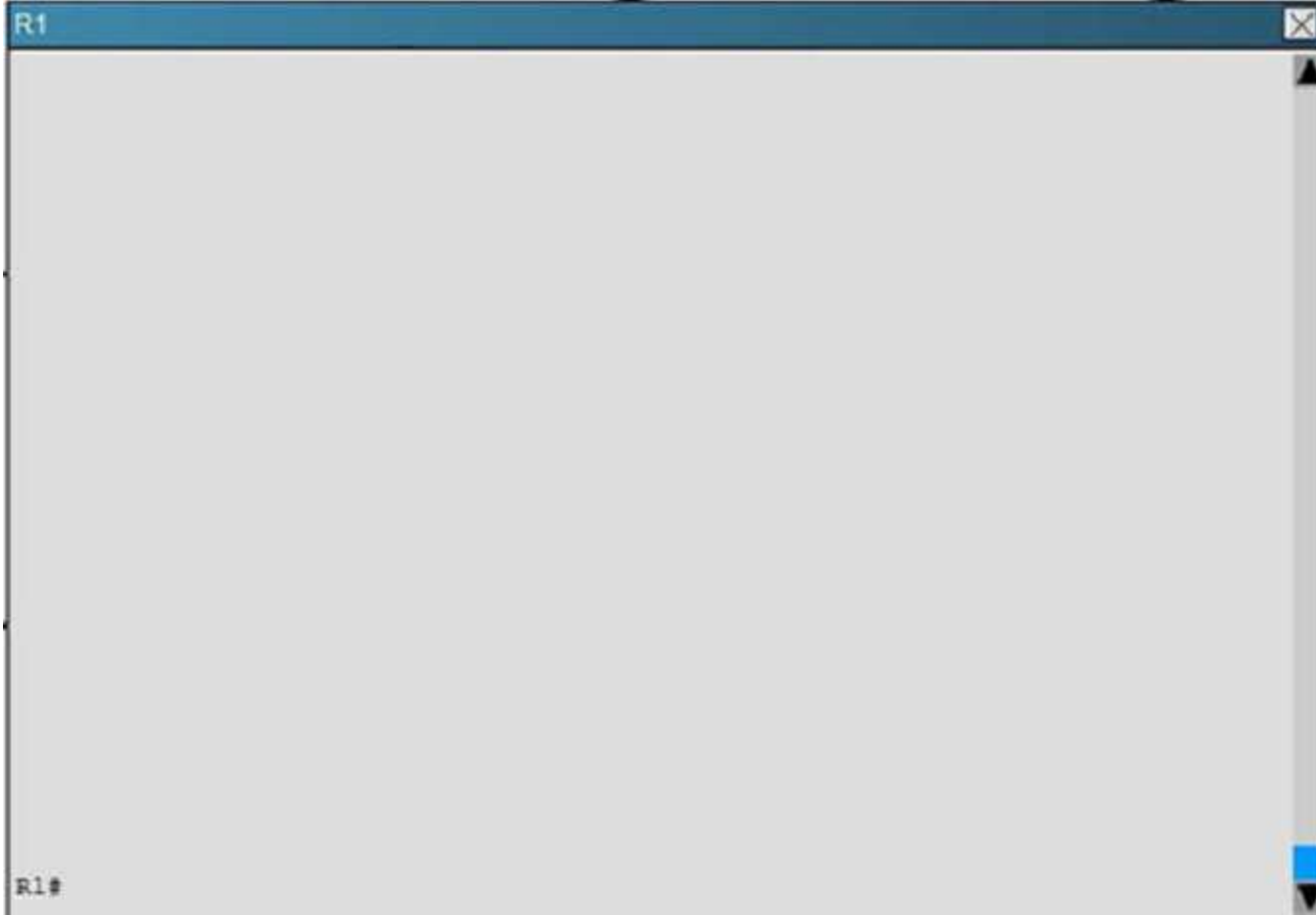
You are required to troubleshoot and resolve OSPF neighbor adjacency issues between the main office and the routers located in the remote branch offices.

Use appropriate show commands to troubleshoot the issues and answer all four questions.

Instructions



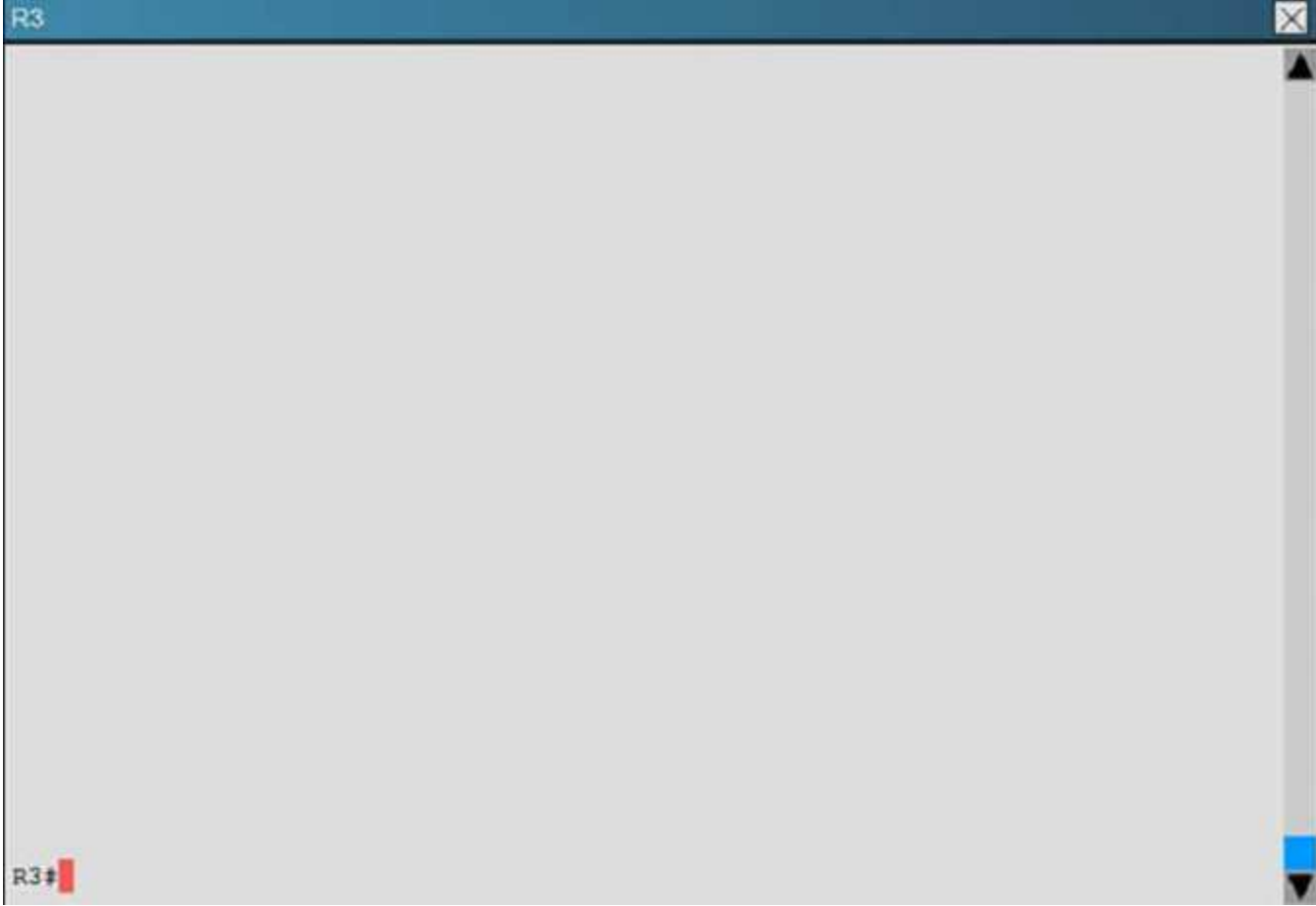
<http://www.gratisexam.com/>



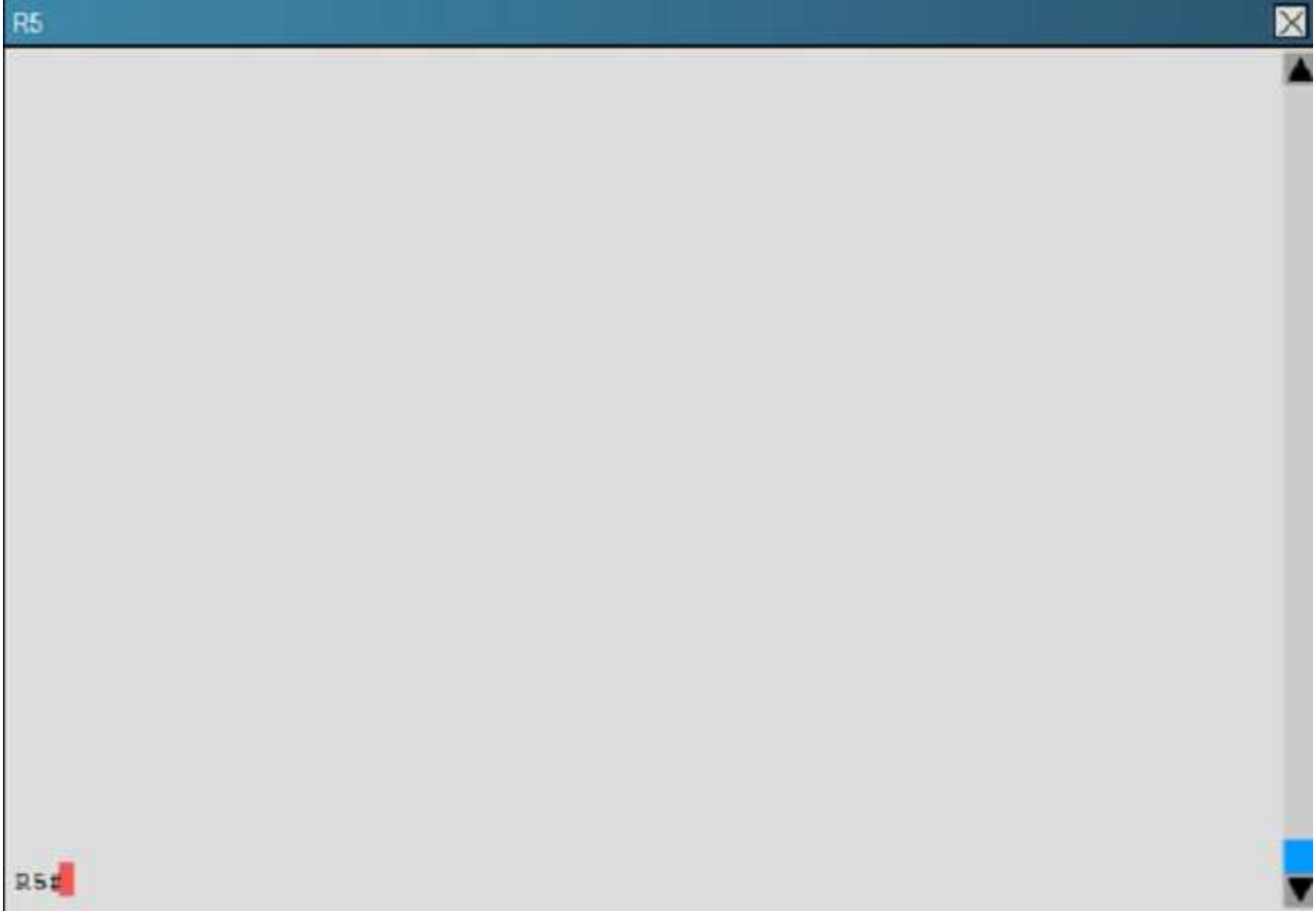
R2



R2#











An OSPF neighbor adjacency is not formed between R3 in the main office and R4 in the Branch1 office. What is causing the problem?

- A. There is an area ID mismatch.
- B. There is a Layer 2 issue; an encapsulation mismatch on serial links.
- C. There is an OSPF hello and dead interval mismatch.
- D. The R3 router ID is configured on R4.

Correct Answer: A

Section: (none)

Explanation

Explanation/Reference:

Explanation:

Here are the relevant parts of the router configs:

```
R1interface Loopback0description ***Loopback***ip address 192.168.1.1 255.255.255.255ip ospf 1 area 0!interface Ethernet0/0description **Connected to R1-LAN**ip address 10.10.110.1 255.255.255.0ip ospf 1 area 0!interface Ethernet0/1description **Connected to L2SW**ip address 10.10.230.1 255.255.255.0ip ospf hello-interval 25ip ospf 1 area 0!router ospf 1log-adjacency-changes
R2!interface Loopback0description **Loopback**ip address 192.168.2.2 255.255.255.255ip ospf 2 area 0!interface Ethernet0/0description **Connected to R2-LAN**ip address 10.10.120.1 255.255.255.0ip ospf 2 area 0!interface Ethernet0/1description **Connected to L2SW**ip address 10.10.230.2 255.255.255.0ip ospf 2 area 0!router ospf 2log-adjacency-changes
R3username R6 password CISCO36!interface Loopback0description **Loopback**ip address 192.168.3.3 255.255.255.255ip ospf 3 area 0!interface Ethernet0/0description **Connected to L2SW**ip address 10.10.230.3 255.255.255.0ip ospf 3 area 0!interface Serial1/0description **Connected to R4-Branch1 office**ip address 10.10.240.1 255.255.255.252encapsulation pppip ospf 3 area 0!interface Serial1/1description **Connected to R5-Branch2 office**ip address 10.10.240.5 255.255.255.252encapsulation pppip ospf hello-interval 50ip ospf 3 area 0!interface Serial1/2description **Connected to R6-Branch3 office**ip address 10.10.240.9 255.255.255.252encapsulation pppip ospf 3 area 0ppp authentication chap!router ospf 3router-id 192.168.3.3!
R4!interface Loopback0description **Loopback**ip address 192.168.4.4 255.255.255.255ip ospf 4 area 2!interface Ethernet0/0ip address 172.16.113.1 255.255.255.0ip ospf 4 area 2!interface Serial1/0description **Connected to R3-Main Branch office**ip address 10.10.240.2 255.255.255.252encapsulation pppip ospf 4 area 2!router ospf 4log-adjacency-changes
R5!interface Loopback0description **Loopback**ip address 192.168.5.5 255.255.255.255ip ospf 5 area 0!interface Ethernet0/0ip address 172.16.114.1 255.255.255.0ip ospf 5 area 0!interface Serial1/0description **Connected to R3-Main Branch office**ip address 10.10.240.6 255.255.255.252encapsulation pppip ospf 5 area 0!router ospf 5log-adjacency-changes
R6username R3 password CISCO36!interface Loopback0description **Loopback**ip address 192.168.6.6 255.255.255.255ip ospf 6 area 0!interface Ethernet0/0ip address 172.16.115.1 255.255.255.0ip ospf 6 area 0!interface Serial1/0description **Connected to R3-Main Branch office**ip address 10.10.240.10 255.255.255.252encapsulation pppip ospf 6 area 0ppp authentication chap!router ospf 6router-id 192.168.3.3!
```

On both R3 and R4 use “show running-config” command to check their S1/0 interfaces

```
R3#show running-config<<output omitted>>!interface Serial1/0description **Connected to R4-Branch1 office**ip address 10.10.240.1 255.255.255.252encapsulation pppip ospf 3 area 0!<<output omitted>>
```

```
R4#show running-config<<output omitted>>!interface Serial1/0description **Connected to R3-Main Branch office**ip address 10.10.240.2 255.255.255.252encapsulation pppip ospf 4 area 2!<<output omitted>>
```

In the output above we see their Area IDs are mismatched; interface S1/0 of R3 is in area 0 (R3: ip ospf 3 area 0) while interface s1/0 of R4 is in area 2 (R4: ip ospf 4 area 2).

QUESTION 5

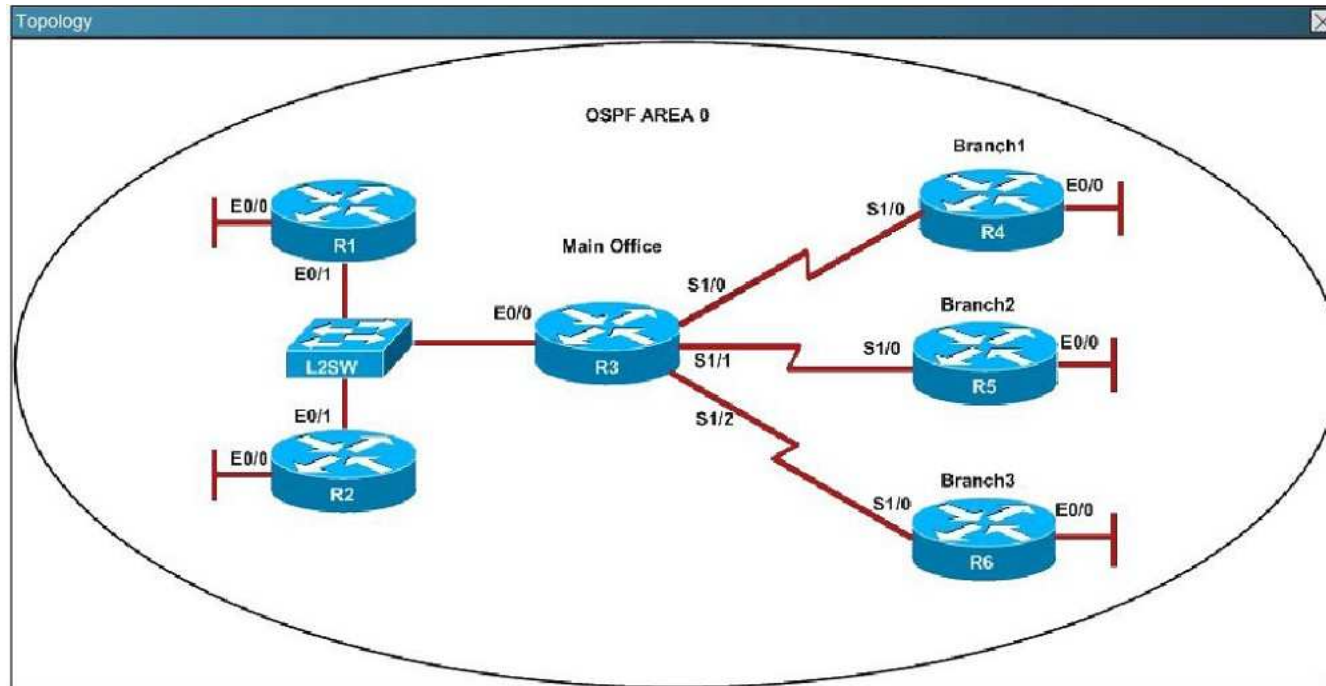
Scenario

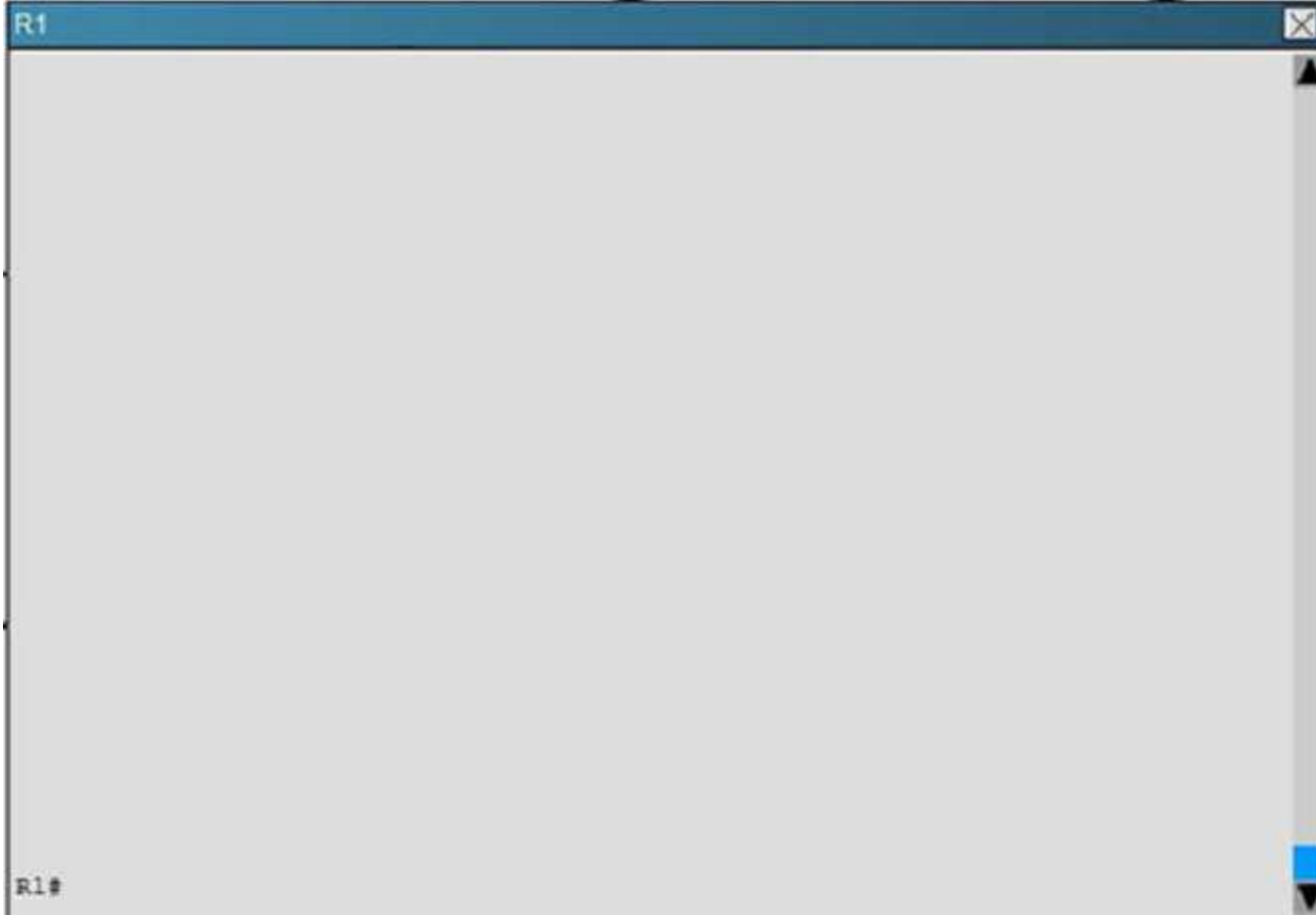
Refer to the topology. Your company has decided to connect the main office with three other remote branch offices using point-to-point serial links.

You are required to troubleshoot and resolve OSPF neighbor adjacency issues between the main office and the routers located in the remote branch offices.

Use appropriate show commands to troubleshoot the issues and answer all four questions.

Instructions

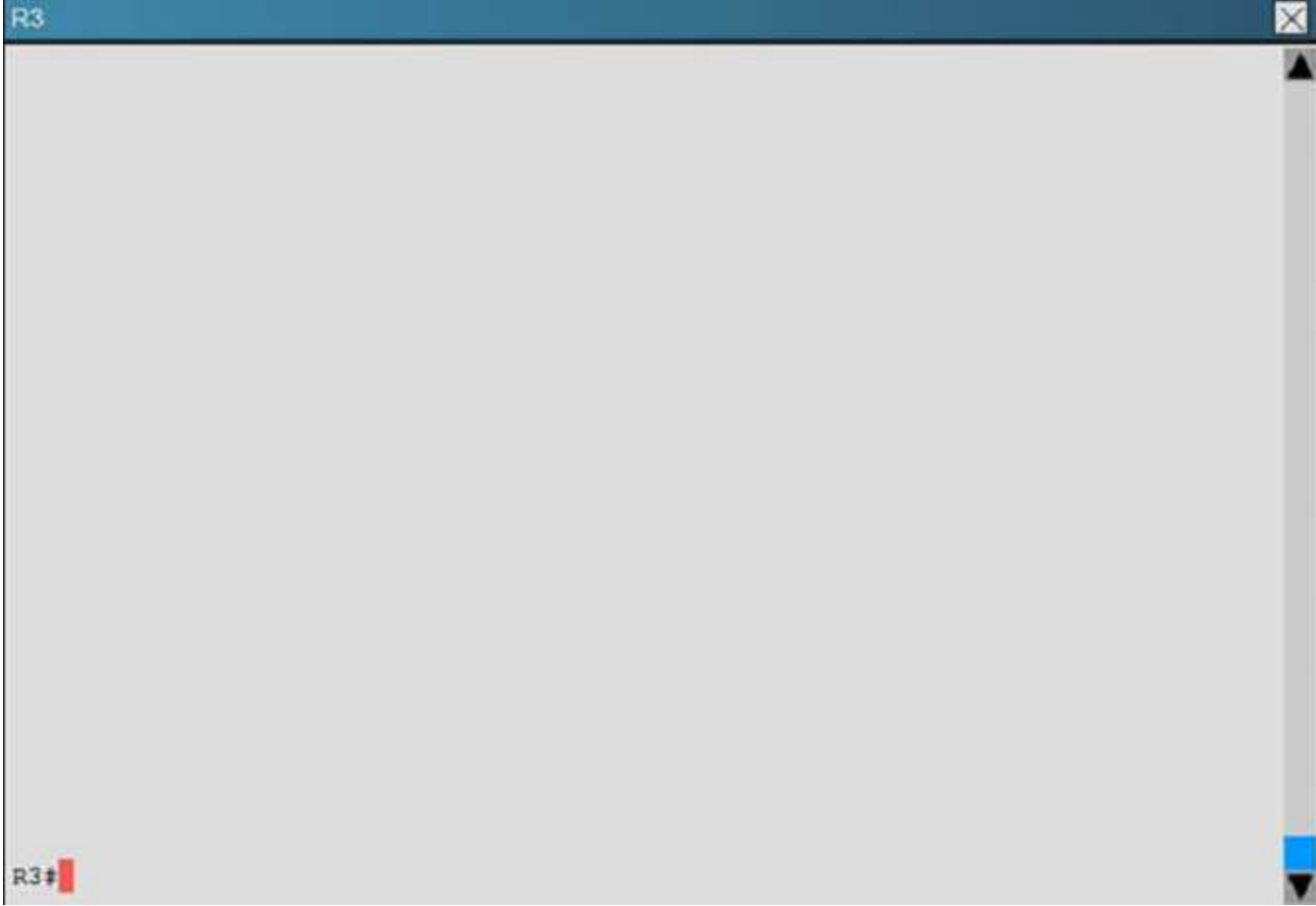


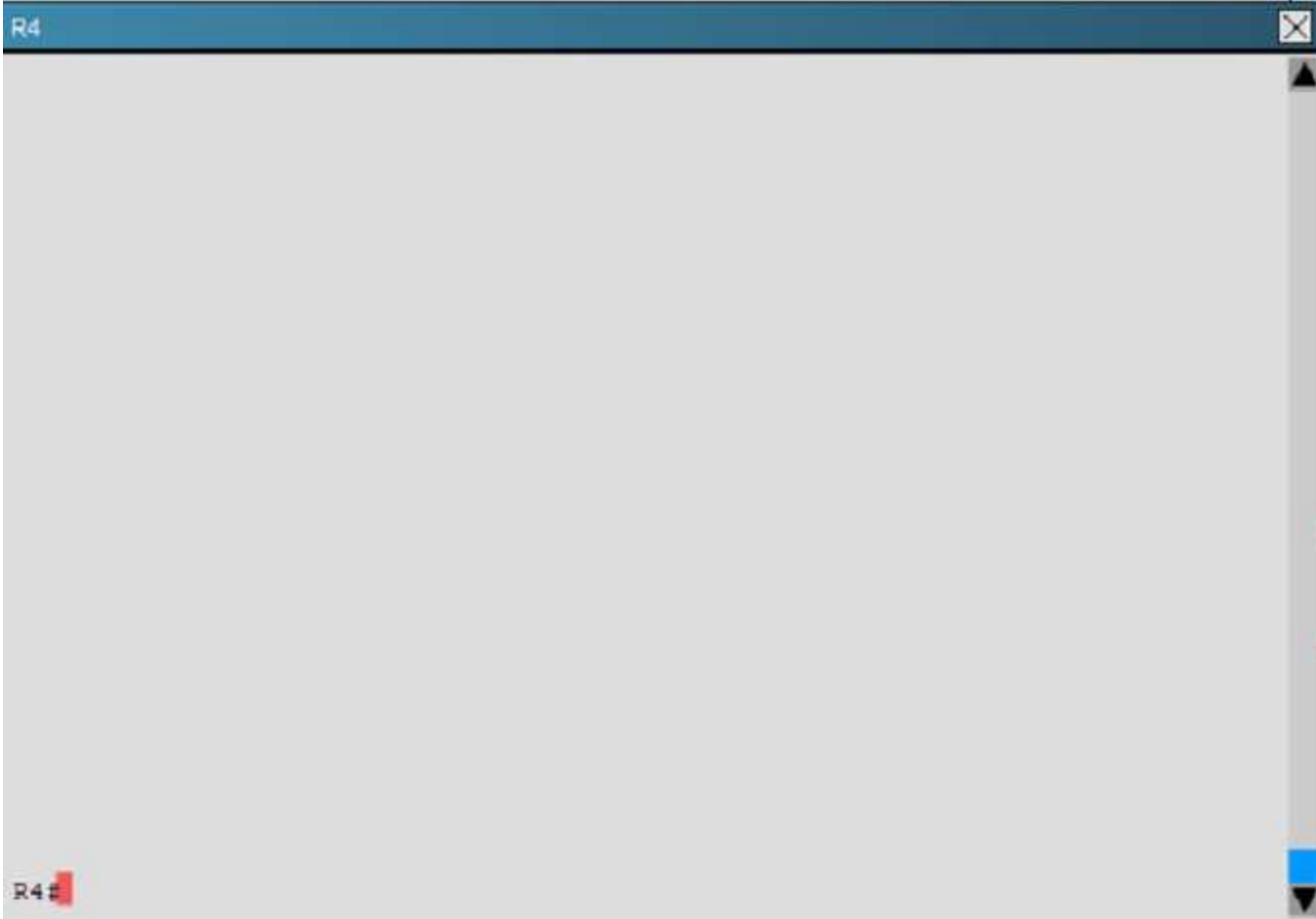


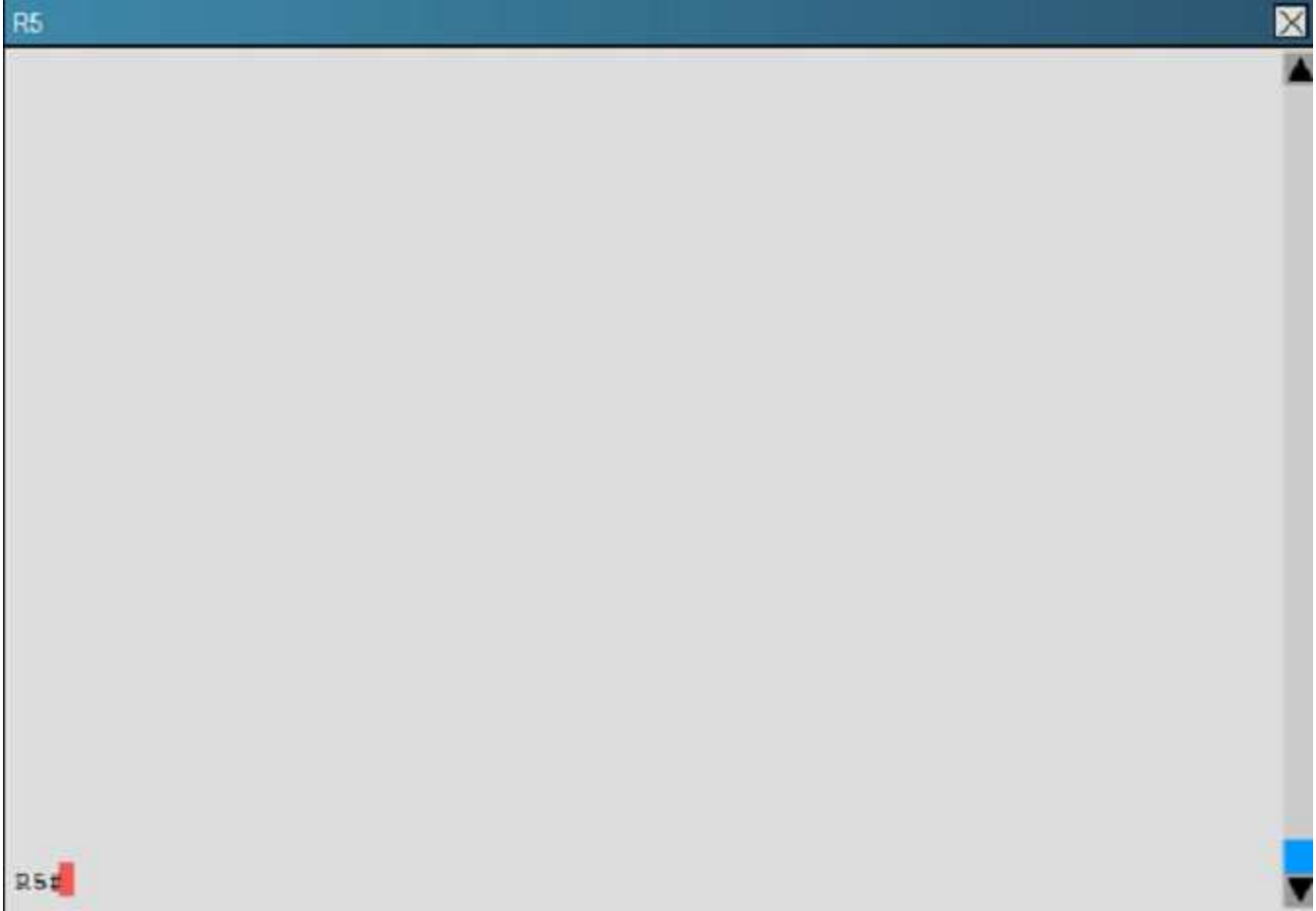
R2



R2#











An OSPF neighbor adjacency is not formed between R3 in the main office and R5 in the Branch2 office. What is causing the problem?

- A. There is an area ID mismatch.
- B. There is a PPP authentication issue; a password mismatch.
- C. There is an OSPF hello and dead interval mismatch.
- D. There is a missing network command in the OSPF process on R5.

Correct Answer: C

Section: (none)

Explanation

Explanation/Reference:

Explanation:

Here are the relevant parts of the router configs:

```
R1interface Loopback0description ***Loopback***ip address 192.168.1.1 255.255.255.255ip ospf 1 area 0!interface Ethernet0/0description **Connected to R1-LAN**ip address 10.10.110.1 255.255.255.0ip ospf 1 area 0!interface Ethernet0/1description **Connected to L2SW**ip address 10.10.230.1 255.255.255.0ip ospf hello-interval 25ip ospf 1 area 0!router ospf 1log-adjacency-changes
R2!interface Loopback0description **Loopback**ip address 192.168.2.2 255.255.255.255ip ospf 2 area 0!interface Ethernet0/0description **Connected to R2-LAN**ip address 10.10.120.1 255.255.255.0ip ospf 2 area 0!interface Ethernet0/1description **Connected to L2SW**ip address 10.10.230.2 255.255.255.0ip ospf 2 area 0!router ospf 2log-adjacency-changes
R3username R6 password CISCO36!interface Loopback0description **Loopback**ip address 192.168.3.3 255.255.255.255ip ospf 3 area 0!interface Ethernet0/0description **Connected to L2SW**ip address 10.10.230.3 255.255.255.0ip ospf 3 area 0!interface Serial1/0description **Connected to R4-Branch1 office**ip address 10.10.240.1 255.255.255.252encapsulation pppip ospf 3 area 0!interface Serial1/1description **Connected to R5-Branch2 office**ip address 10.10.240.5 255.255.255.252encapsulation pppip ospf hello-interval 50ip ospf 3 area 0!interface Serial1/2description **Connected to R6-Branch3 office**ip address 10.10.240.9 255.255.255.252encapsulation pppip ospf 3 area 0ppp authentication chap!router ospf 3router-id 192.168.3.3!
R4!interface Loopback0description **Loopback**ip address 192.168.4.4 255.255.255.255ip ospf 4 area 2!interface Ethernet0/0ip address 172.16.113.1 255.255.255.0ip ospf 4 area 2!interface Serial1/0description **Connected to R3-Main Branch office**ip address 10.10.240.2 255.255.255.252encapsulation pppip ospf 4 area 2!router ospf 4log-adjacency-changes
R5!interface Loopback0description **Loopback**ip address 192.168.5.5 255.255.255.255ip ospf 5 area 0!interface Ethernet0/0ip address 172.16.114.1 255.255.255.0ip ospf 5 area 0!interface Serial1/0description **Connected to R3-Main Branch office**ip address 10.10.240.6 255.255.255.252encapsulation pppip ospf 5 area 0!router ospf 5log-adjacency-changes
R6username R3 password CISCO36!interface Loopback0description **Loopback**ip address 192.168.6.6 255.255.255.255ip ospf 6 area 0!interface Ethernet0/0ip address 172.16.115.1 255.255.255.0ip ospf 6 area 0!interface Serial1/0description **Connected to R3-Main Branch office**ip address 10.10.240.10 255.255.255.252encapsulation pppip ospf 6 area 0ppp authentication chap!router ospf 6router-id 192.168.3.3!
```

Continue checking their connected interfaces with the “show running-config” command:

```
R3#show running-config<<output omitted>>!interface Serial1/1description **Connected to R5-Branch2 office**ip address 10.10.240.5 255.255.255.252encapsulation pppip ospf hello-interval 50ip ospf 3 area 0!<<output omitted>>
```

```
R5#show running-config<<output omitted>>!interface Serial1/0description **Connected to R3-Main Branch office**ip address 10.10.240.6 255.255.255.252encapsulation pppip ospf 5 area 0!<<output omitted>>
```

The only difference we can see here is the line “ip ospf hello-interval 50” on R3. This command sets the number of seconds R3 waits before sending the next hello packet out this interface. In this case after configuring this command, R3 will send hello packets to R5 every 50 seconds. But the default value of hello-interval is 10 seconds and R5 is using it. Therefore we can think of a hello interval mismatch problem here. You can verify with the “show ip ospf interface <interface>” command on each router.

```
R3#sh ip ospf int s1/1Serial1/1 is up, line protocol is upInternet Address 10.10.240.5/30, Area 0Process ID 3, Router ID 192.168.3.3, Network Type POINT_TO_POINT, Cost: 64Enabled by interface config, including secondary ip addressesTransmit Delay is 1 sec, State POINT_TO_POINT,Timer intervals configured, Hello 50, Dead 200, Wait 200, Retransmit 5oob-resync timeout 200Hello due in 00:00:28Supports Link-local Signaling (LLS)Index 2/2, flood queue
```

length 0Next 0x0(0)/0x0(0)Last flood scan length is 0, maximum is 0Last flood scan time is 0 msec, maximum is 0 msecNeighbor Count is 0, Adjacent neighbor count is 0Suppress hello for 0 neighbor(s)

```
R5#sh ip ospf int s1/0Serial1/0 is up, line protocol is upInternet Address 10.10.240.6/30, Area 0Process ID 5, Router ID 10.10.240.6, Network Type POINT_TO_POINT, Cost: 64Enabled by interface config, including secondary ip addressesTransmit Delay is 1 sec, State POINT_TO_POINT,Timer intervals configured, Hello 10, Dead 40, Wait 40, Retransmit 5oob-resync timeout 40Hello due in 00:00:04Supports Link-local Signaling (LLS)Index 1/1, flood queue length 0Next 0x0(0)/0x0(0)Last flood scan length is 0, maximum is 0Last flood scan time is 0 msec, maximum is 0 msecNeighbor Count is 0, Adjacent neighbor count is 0Suppress hello for 0 neighbor(s)
```

So we can see both hello and dead interval are mismatched because the dead interval always four times the value of hello interval, unless you manually configure the dead interval (with the ip ospf dead-interval <seconds> command).

QUESTION 6

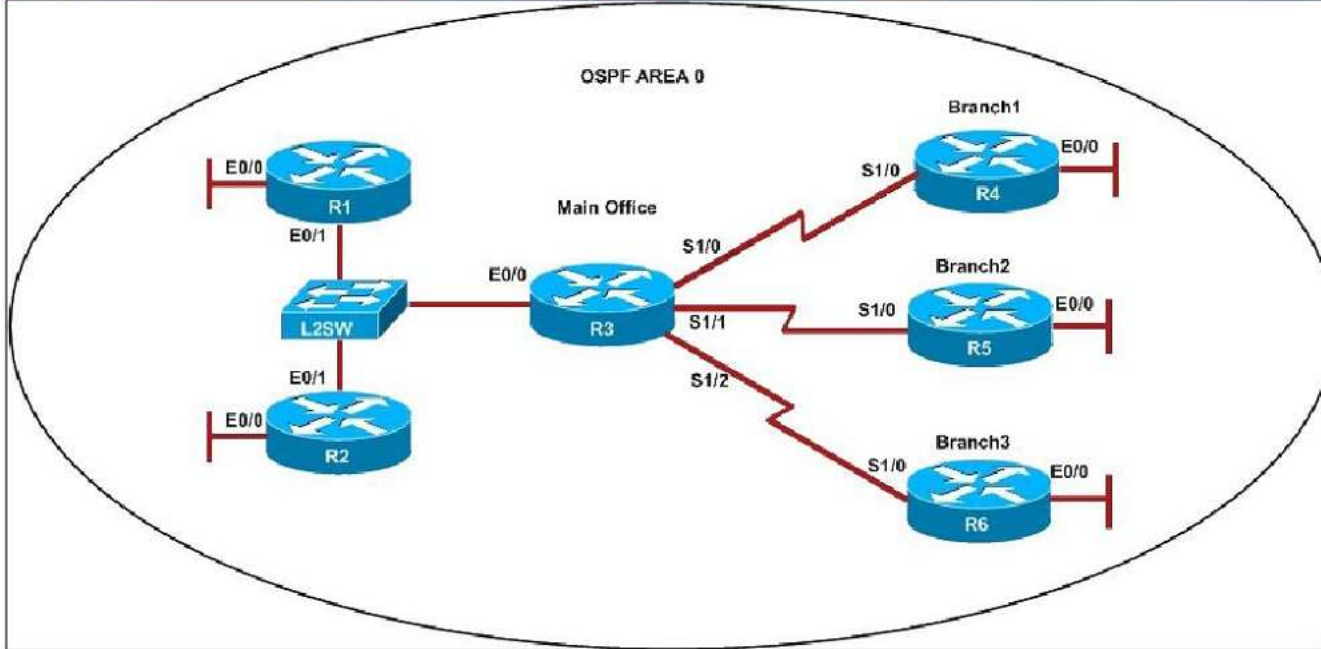
Scenario

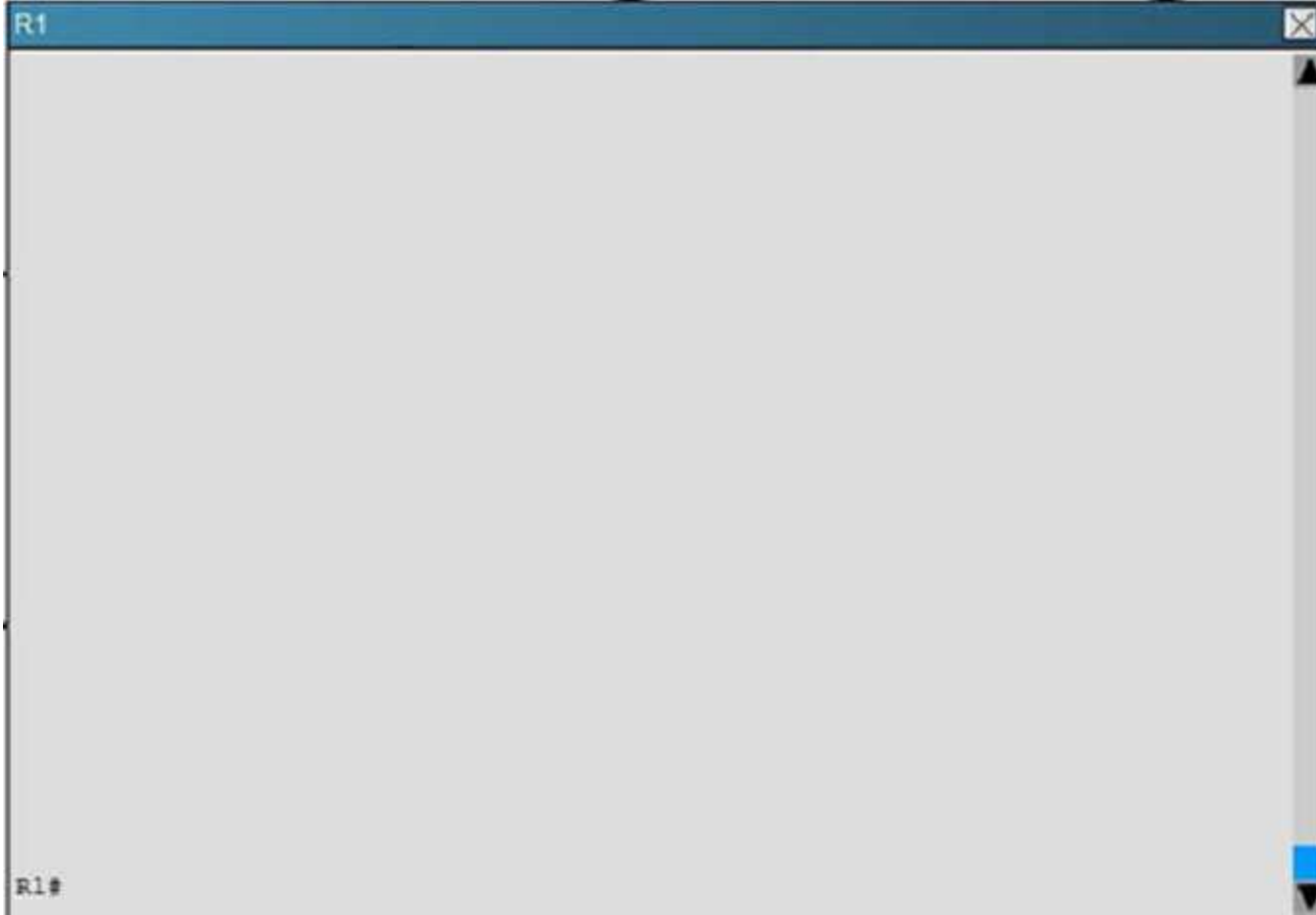
Refer to the topology. Your company has decided to connect the main office with three other remote branch offices using point-to-point serial links.

You are required to troubleshoot and resolve OSPF neighbor adjacency issues between the main office and the routers located in the remote branch offices.

Use appropriate show commands to troubleshoot the issues and answer all four questions.

Instructions

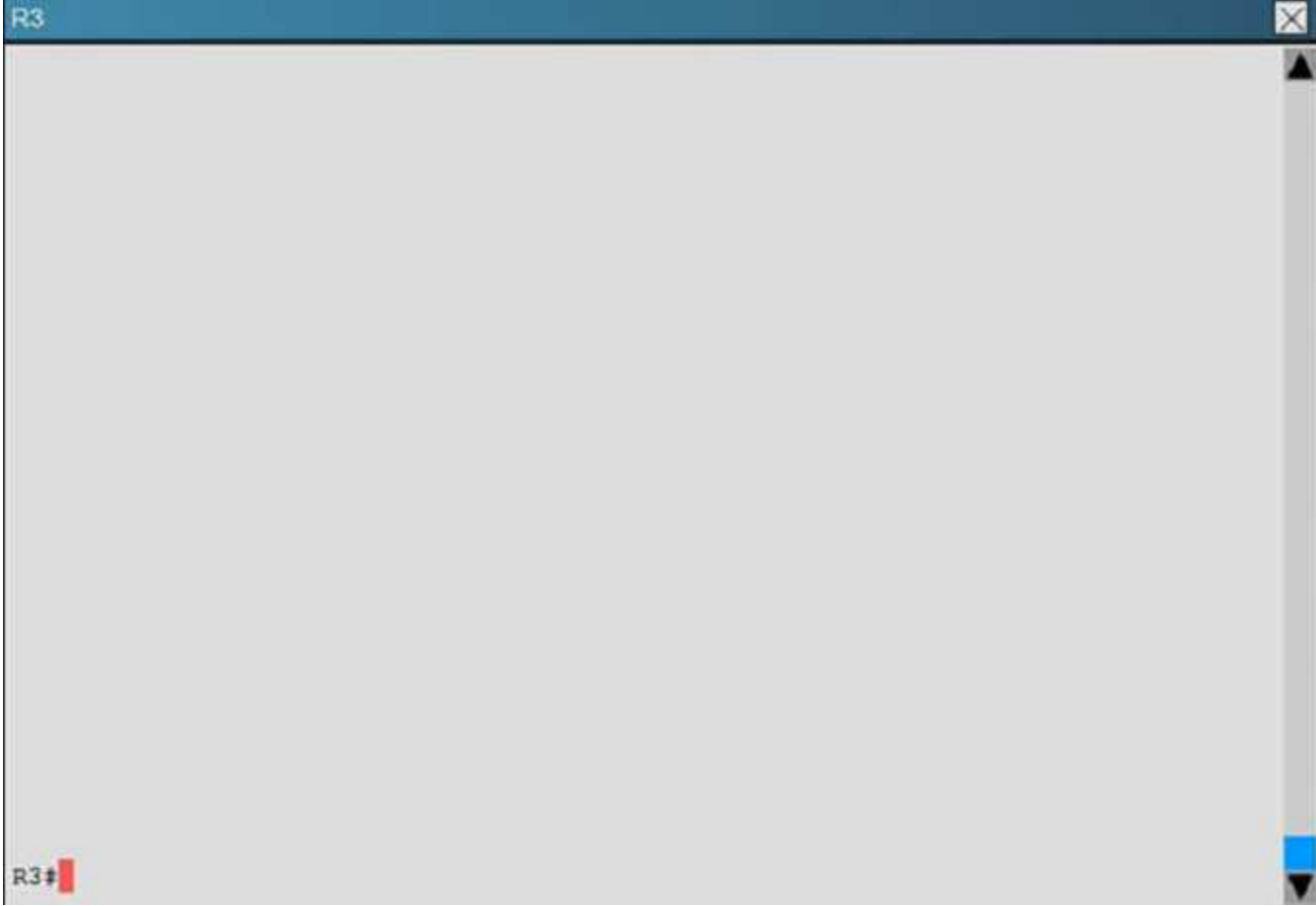


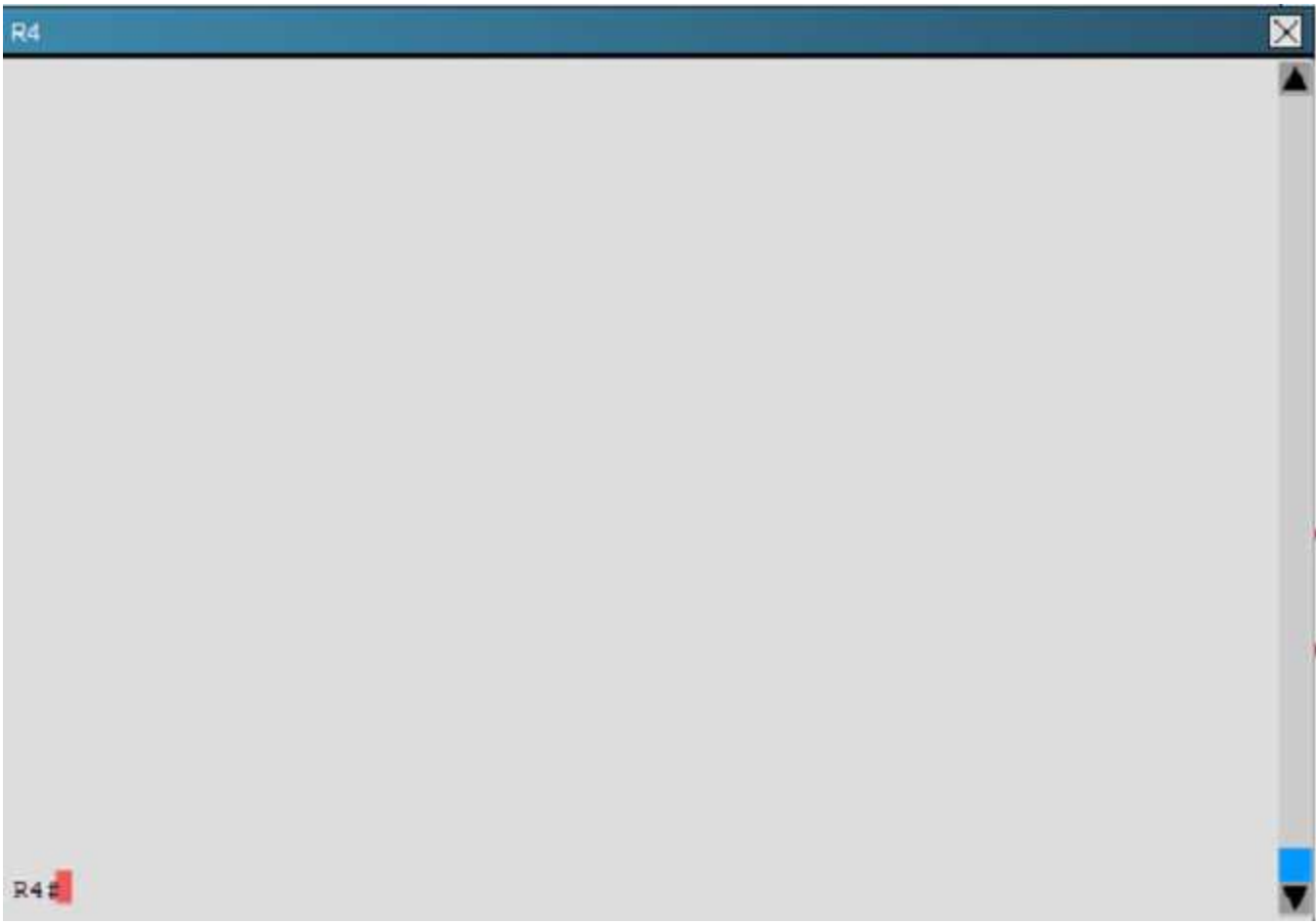


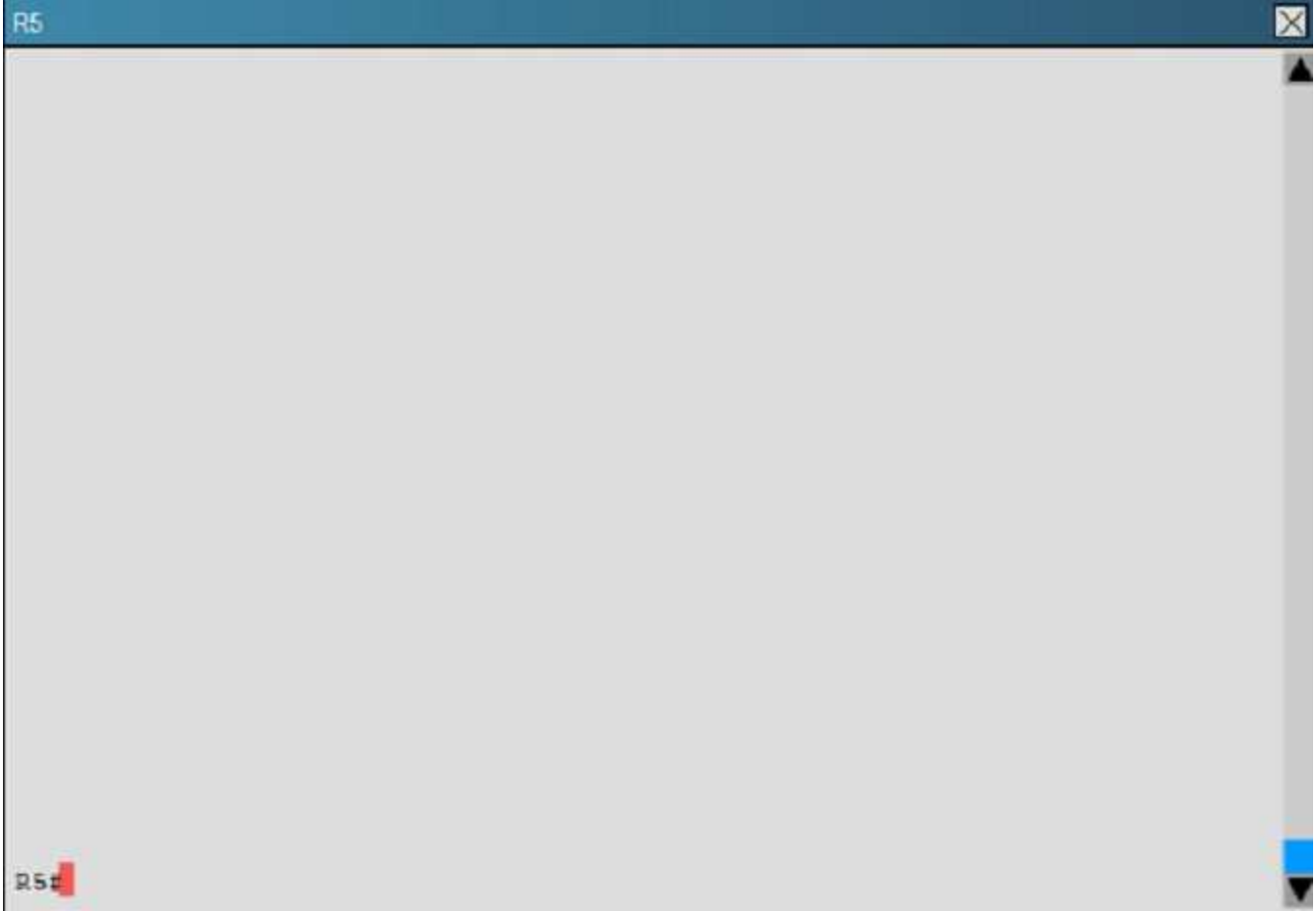
R2



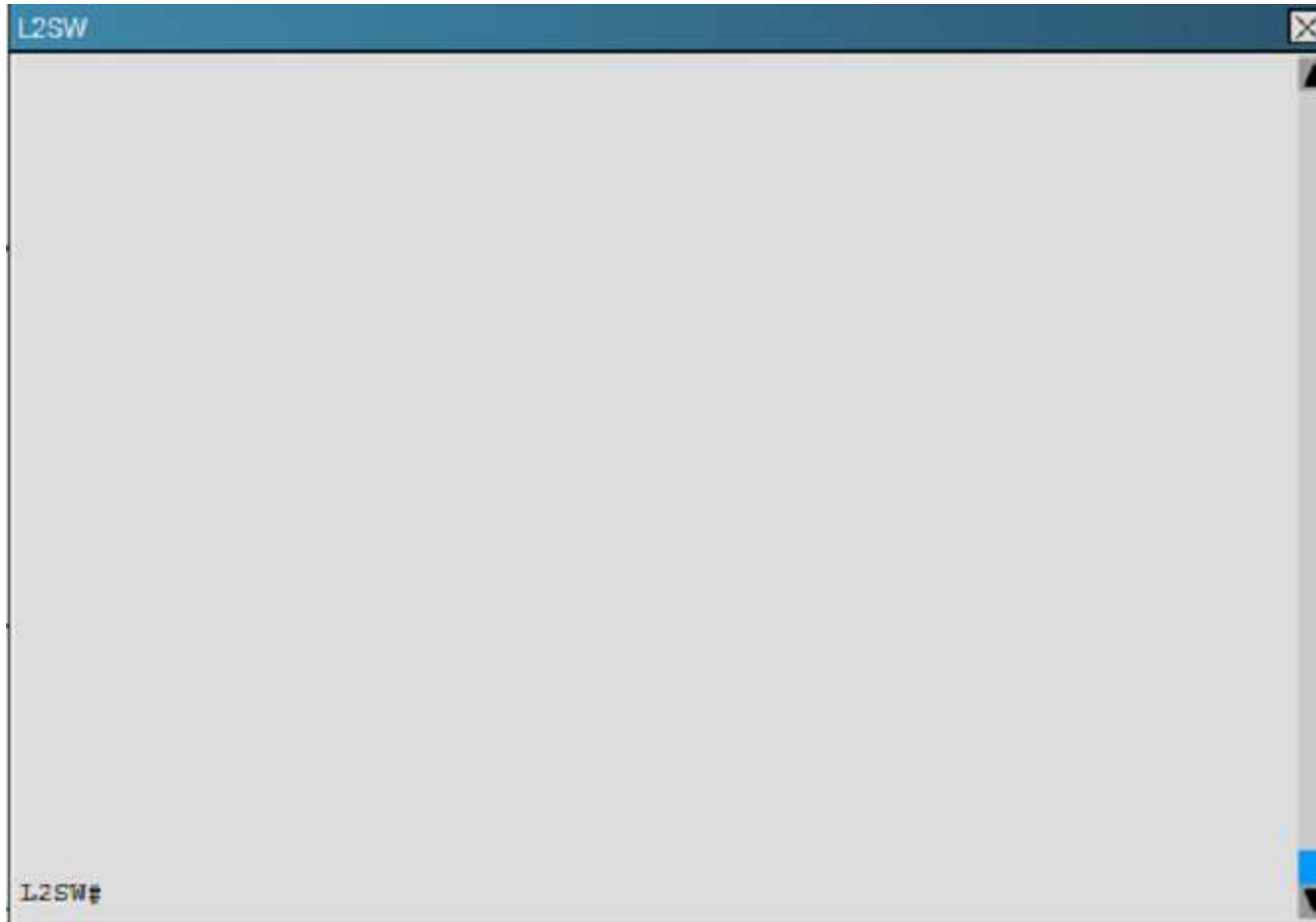
R2#











R1 does not form an OSPF neighbor adjacency with R2. Which option would fix the issue?

- A. R1 ethernet0/1 is shutdown. Configure no shutdown command.
- B. R1 ethernet0/1 configured with a non-default OSPF hello interval of 25; configure no ip ospf hello-interval 25
- C. R2 ethernet0/1 and R3 ethernet0/0 are configured with a non-default OSPF hello interval of 25; configure no ip ospf hello-interval 25
- D. Enable OSPF for R1 ethernet0/1; configure ip ospf 1 area 0 command under ethernet0/1.

Correct Answer: B

Section: (none)**Explanation****Explanation/Reference:**

Explanation:

Here are the relevant parts of the router configs:

```
R1interface Loopback0description ***Loopback***ip address 192.168.1.1 255.255.255.255ip ospf 1 area 0!interface Ethernet0/0description **Connected to R1-LAN**ip address 10.10.110.1 255.255.255.0ip ospf 1 area 0!interface Ethernet0/1description **Connected to L2SW**ip address 10.10.230.1 255.255.255.0ip ospf hello-interval 25ip ospf 1 area 0!router ospf 1log-adjacency-changes
R2!interface Loopback0description **Loopback**ip address 192.168.2.2 255.255.255.255ip ospf 2 area 0!interface Ethernet0/0description **Connected to R2-LAN**ip address 10.10.120.1 255.255.255.0ip ospf 2 area 0!interface Ethernet0/1description **Connected to L2SW**ip address 10.10.230.2 255.255.255.0ip ospf 2 area 0!router ospf 2log-adjacency-changes
R3username R6 password CISCO36!interface Loopback0description **Loopback**ip address 192.168.3.3 255.255.255.255ip ospf 3 area 0!interface Ethernet0/0description **Connected to L2SW**ip address 10.10.230.3 255.255.255.0ip ospf 3 area 0!interface Serial1/0description **Connected to R4-Branch1 office**ip address 10.10.240.1 255.255.255.252encapsulation pppip ospf 3 area 0!interface Serial1/1description **Connected to R5-Branch2 office**ip address 10.10.240.5 255.255.255.252encapsulation pppip ospf hello-interval 50ip ospf 3 area 0!interface Serial1/2description **Connected to R6-Branch3 office**ip address 10.10.240.9 255.255.255.252encapsulation pppip ospf 3 area 0ppp authentication chap!router ospf 3router-id 192.168.3.3!
R4!interface Loopback0description **Loopback**ip address 192.168.4.4 255.255.255.255ip ospf 4 area 2!interface Ethernet0/0ip address 172.16.113.1 255.255.255.0ip ospf 4 area 2!interface Serial1/0description **Connected to R3-Main Branch office**ip address 10.10.240.2 255.255.255.252encapsulation pppip ospf 4 area 2!router ospf 4log-adjacency-changes
R5!interface Loopback0description **Loopback**ip address 192.168.5.5 255.255.255.255ip ospf 5 area 0!interface Ethernet0/0ip address 172.16.114.1 255.255.255.0ip ospf 5 area 0!interface Serial1/0description **Connected to R3-Main Branch office**ip address 10.10.240.6 255.255.255.252encapsulation pppip ospf 5 area 0!router ospf 5log-adjacency-changes
R6username R3 password CISCO36!interface Loopback0description **Loopback**ip address 192.168.6.6 255.255.255.255ip ospf 6 area 0!interface Ethernet0/0ip address 172.16.115.1 255.255.255.0ip ospf 6 area 0!interface Serial1/0description **Connected to R3-Main Branch office**ip address 10.10.240.10 255.255.255.252encapsulation pppip ospf 6 area 0ppp authentication chap!router ospf 6router-id 192.168.3.3!
```

Continue checking their connected interfaces with the “show running-config” command:

```
R1#show running-config<<output omitted>>!interface Ethernet0/1description **Connected to L2SW**ip address 10.10.230.1 255.255.255.0ip ospf hello-interval 25ip ospf 1 area 0!<<output omitted>>
```

```
R2#show running-config<<output omitted>>!interface Ethernet0/1description **Connected to L2SW**ip address 10.10.230.2 255.255.255.0ip ospf 2 area 0!<<output omitted>>
```

We see the hello interval on R1 is not the same as R2 (and you can verify with the “show ip ospf interface <interface> command”) -> There is a hello and dead interval mismatch problem. We should configure “no ip ospf hello-interval 25” on R1.

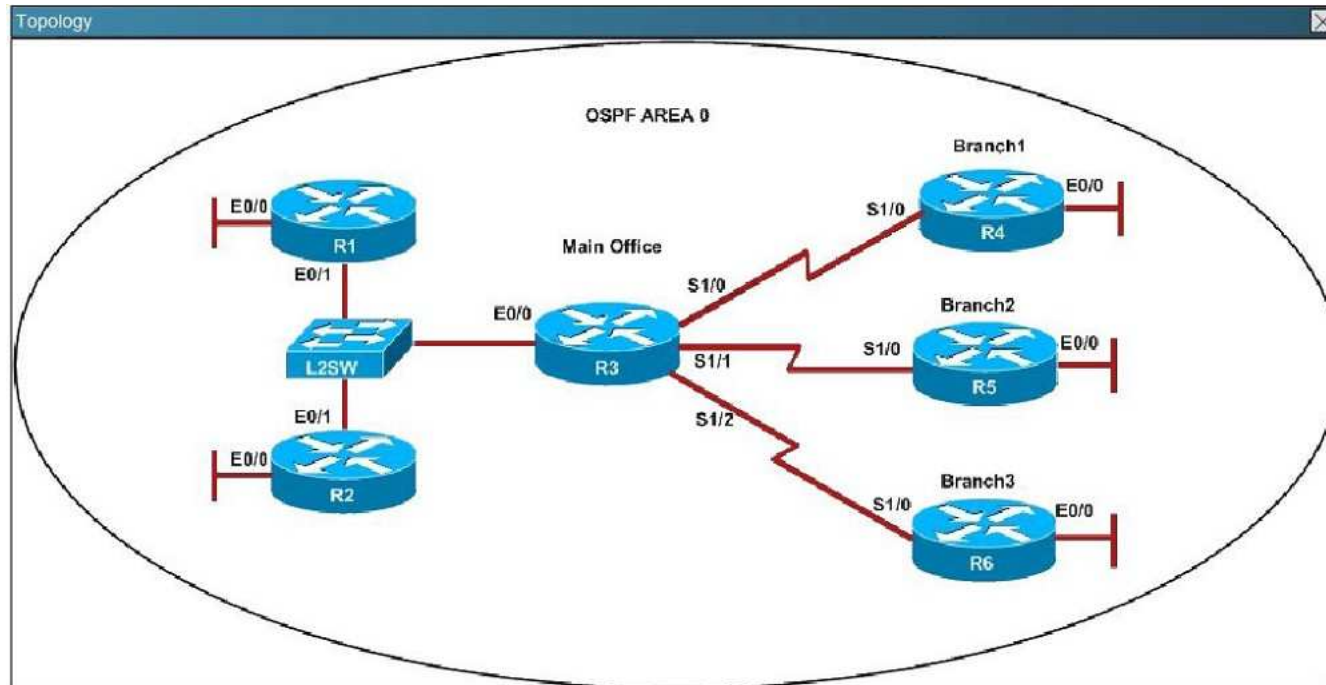
Note: Maybe there are some versions of this question in the exam. For example there are some reports saying that Ethernet0/1 on R1 is shutdown (and this is the correct choice in the exam). So please be careful checking the config on the routers before choosing the correct answers.

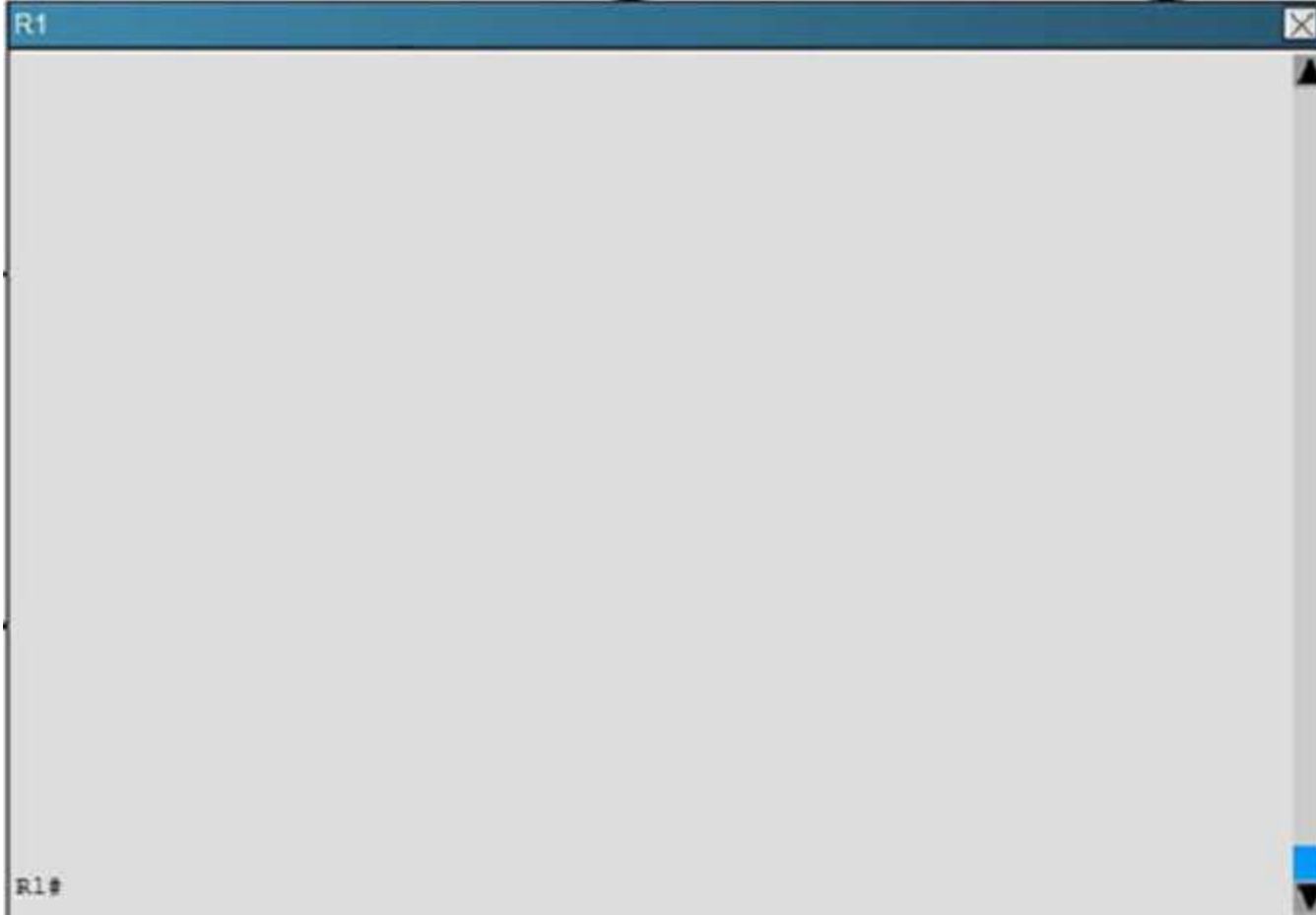
QUESTION 7

Scenario

Refer to the topology. Your company has decided to connect the main office with three other remote branch offices using point-to-point serial links. You are required to troubleshoot and resolve OSPF neighbor adjacency issues between the main office and the routers located in the remote branch offices. Use appropriate show commands to troubleshoot the issues and answer all four questions.

Instructions

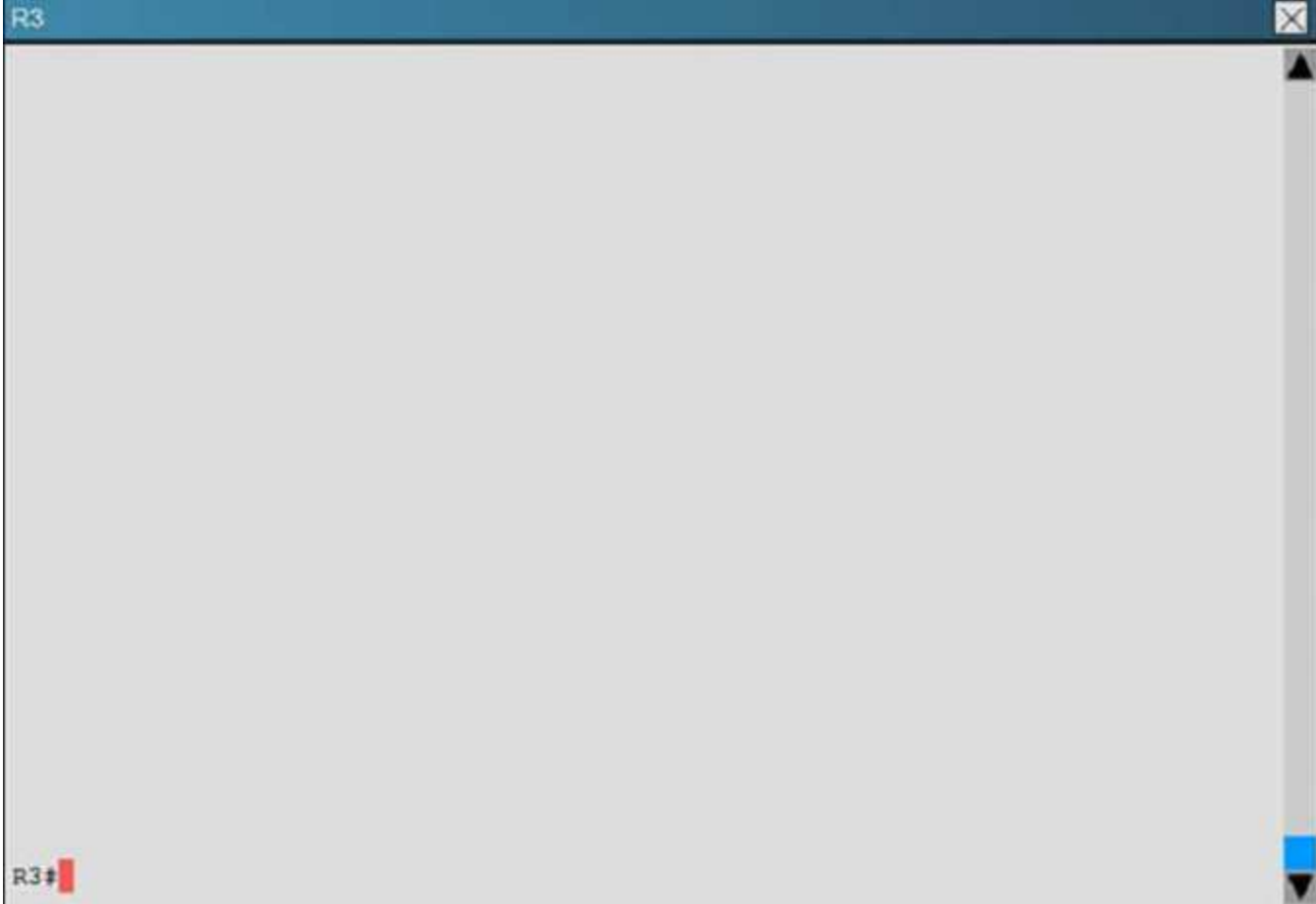




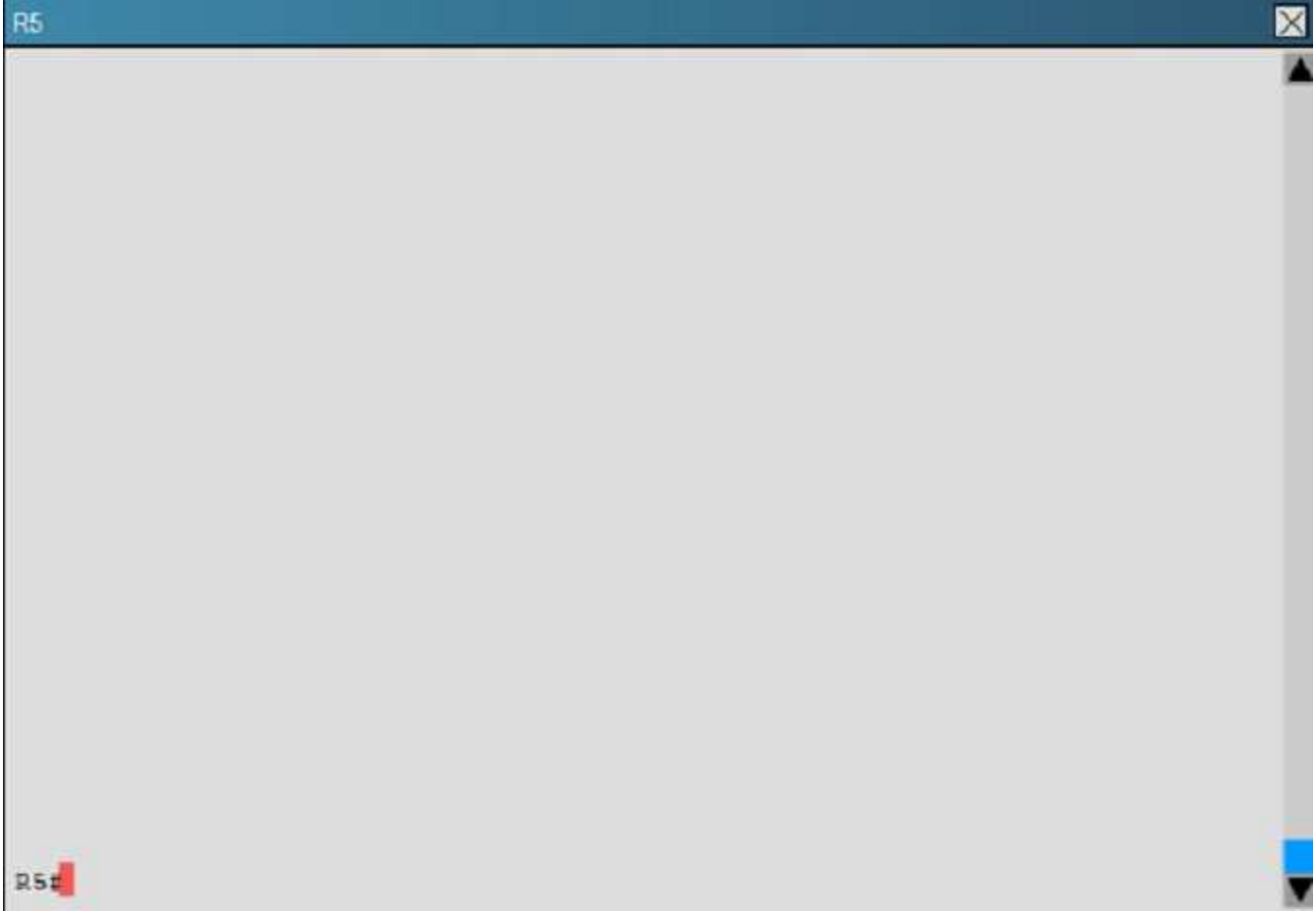
R2



R2#











An OSPF neighbor adjacency is not formed between R3 in the main office and R6 in the Branch3 office. What is causing the problem?

- A. There is an area ID mismatch.
- B. There is a PPP authentication issue; the username is not configured on R3 and R6.
- C. There is an OSPF hello and dead interval mismatch.
- D. The R3 router ID is configured on R6.

Correct Answer: D

Section: (none)**Explanation****Explanation/Reference:**

Explanation:

Here are the relevant parts of the router configs:

```
R1interface Loopback0description ***Loopback***ip address 192.168.1.1 255.255.255.255ip ospf 1 area 0!interface Ethernet0/0description **Connected to R1-LAN**ip address 10.10.110.1 255.255.255.0ip ospf 1 area 0!interface Ethernet0/1description **Connected to L2SW**ip address 10.10.230.1 255.255.255.0ip ospf hello-interval 25ip ospf 1 area 0!router ospf 1log-adjacency-changes
R2!interface Loopback0description **Loopback**ip address 192.168.2.2 255.255.255.255ip ospf 2 area 0!interface Ethernet0/0description **Connected to R2-LAN**ip address 10.10.120.1 255.255.255.0ip ospf 2 area 0!interface Ethernet0/1description **Connected to L2SW**ip address 10.10.230.2 255.255.255.0ip ospf 2 area 0!router ospf 2log-adjacency-changes
R3username R6 password CISCO36!interface Loopback0description **Loopback**ip address 192.168.3.3 255.255.255.255ip ospf 3 area 0!interface Ethernet0/0description **Connected to L2SW**ip address 10.10.230.3 255.255.255.0ip ospf 3 area 0!interface Serial1/0description **Connected to R4-Branch1 office**ip address 10.10.240.1 255.255.255.252encapsulation pppip ospf 3 area 0!interface Serial1/1description **Connected to R5-Branch2 office**ip address 10.10.240.5 255.255.255.252encapsulation pppip ospf hello-interval 50ip ospf 3 area 0!interface Serial1/2description **Connected to R6-Branch3 office**ip address 10.10.240.9 255.255.255.252encapsulation pppip ospf 3 area 0ppp authentication chap!router ospf 3router-id 192.168.3.3!
R4!interface Loopback0description **Loopback**ip address 192.168.4.4 255.255.255.255ip ospf 4 area 2!interface Ethernet0/0ip address 172.16.113.1 255.255.255.0ip ospf 4 area 2!interface Serial1/0description **Connected to R3-Main Branch office**ip address 10.10.240.2 255.255.255.252encapsulation pppip ospf 4 area 2!router ospf 4log-adjacency-changes
R5!interface Loopback0description **Loopback**ip address 192.168.5.5 255.255.255.255ip ospf 5 area 0!interface Ethernet0/0ip address 172.16.114.1 255.255.255.0ip ospf 5 area 0!interface Serial1/0description **Connected to R3-Main Branch office**ip address 10.10.240.6 255.255.255.252encapsulation pppip ospf 5 area 0!router ospf 5log-adjacency-changes
R6username R3 password CISCO36!interface Loopback0description **Loopback**ip address 192.168.6.6 255.255.255.255ip ospf 6 area 0!interface Ethernet0/0ip address 172.16.115.1 255.255.255.0ip ospf 6 area 0!interface Serial1/0description **Connected to R3-Main Branch office**ip address 10.10.240.10 255.255.255.252encapsulation pppip ospf 6 area 0ppp authentication chap!router ospf 6router-id 192.168.3.3!
```

```
R3#show running-config<<output omitted>>username R6 password CISCO36!interface Serial1/2description **Connected to R6-Branch3 office**ip address 10.10.240.9 255.255.255.252encapsulation pppip ospf 3 area 0ppp authentication chap!<<output omitted>>!router ospf 3router-id 192.168.3.3!<<output omitted>>
```

```
R6#show running-config<<output omitted>>username R3 password CISCO36!interface Serial1/0description **Connected to R3-Main Branch office**ip address 10.10.240.10 255.255.255.252encapsulation pppip ospf 6 area 0ppp authentication chap!<<output omitted>>!router ospf 6router-id 192.168.3.3!<<output omitted>>
```

We are not sure about the configuration of ppp authentication in this case. Some reports said that only one router has the “ppp authentication chap” command but it is just a trick and is not the problem here. The real problem here is R6 uses the same router-id of R3 (192.168.3.3) so OSPF neighborship cannot be established. In real life, such configuration error will be shown in the command line interface (CLI). So please check carefully for this question.

QUESTION 8

What are three advantages of VLANs? (Choose three.)



<http://www.gratisexam.com/>

- A. They establish broadcast domains in switched networks.
- B. They provide a low-latency internetworking alternative to routed networks.
- C. They utilize packet filtering to enhance network security.
- D. They can simplify adding, moving, or changing hosts on the network.
- E. They allow access to network services based on department, not physical location.
- F. They provide a method of conserving IP addresses in large networks.

Correct Answer: ADE

Section: (none)

Explanation

Explanation/Reference:

Explanation:

QUESTION 9

Which command can you enter to determine whether serial interface 0/2/0 has been configured using HDLC encapsulation?

- A. router#show platform
- B. router#show interfaces Serial 0/2/0
- C. router#show ip interface s0/2/0
- D. router#show ip interface brief

Correct Answer: B

Section: (none)

Explanation

Explanation/Reference:

Explanation:

QUESTION 10

<http://www.gratisexam.com/>

Which function of the IP SLAs ICMP jitter operation can you use to determine whether a VoIP issue is caused by excessive end-to-end time?

- A. packet loss
- B. jitter
- C. successive packet loss
- D. round-trip time latency

Correct Answer: D

Section: (none)

Explanation

Explanation/Reference:

Explanation:

QUESTION 11

Refer to the exhibit.

```
00:00:39: %LINEPROTO-5-UPDOWN: Line protocol on Interface Vlan1, changed state to down
00:00:40: %SPANTRREE-5-EXTENDED_SYSID: Extended SysId enabled for type vlan
00:00:42: %SYS-5-CONFIG_I: Configured from memory by console
00:00:42: %SYS-5-RESTART: System restarted --
Cisco IOS Software, C2960 Software (C2960-LANBASEK9-M), Version 12.2(25)SEE2, RELEASE SOFTWARE (fc.1)
Copyright (c) 1986-2006 by Cisco Systems, Inc.
Compiled Fri 28-Jul-06 11:57 by yenanh
00:00:44: %LINK-5-CHANGED: Interface Vlan1, changed state to administratively down
00:00:44: %LINK-3-UPDOWN: Interface FastEthernet0/1, changed state to up
00:00:44: %LINK-3-UPDOWN: Interface FastEthernet0/2, changed state to up
00:00:44: %LINK-3-UPDOWN: Interface FastEthernet0/11, changed state to up
00:00:45: %LINEPROTO-5-UPDOWN: Line protocol on Interface FastEthernet0/1, changed state to up
00:00:45: %LINEPROTO-5-UPDOWN: Line protocol on Interface FastEthernet0/2, changed state to up
00:00:45: %LINEPROTO-5-UPDOWN: Line protocol on Interface FastEthernet0/11, changed state to up
00:00:48: %LINK-3-UPDOWN: Interface FastEthernet0/12, changed state to up
00:00:49: %LINEPROTO-5-UPDOWN: Line protocol on Interface FastEthernet0/12, changed state to up
```



<http://www.gratisexam.com/>

Which of these statements correctly describes the state of the switch once the boot process has been completed?

- A. The switch will need a different IOS code in order to support VLANs and STP.
- B. Remote access management of this switch will not be possible without configuration change.
- C. As FastEthernet0/12 will be the last to come up, it will be blocked by STP.
- D. More VLANs will need to be created for this switch.

Correct Answer: B

Section: (none)

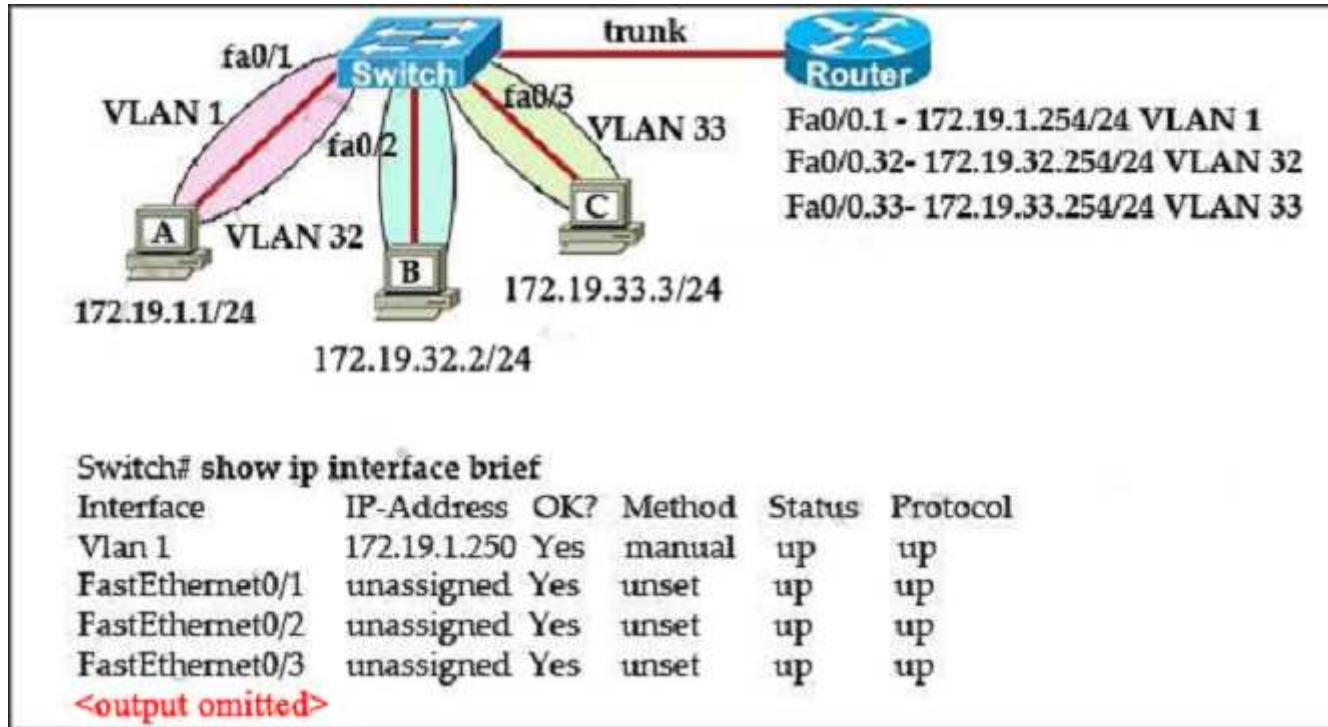
Explanation

Explanation/Reference:

Explanation:

QUESTION 12

Refer to the exhibit.



The network administrator normally establishes a Telnet session with the switch from host A. However, host A is unavailable. The administrator's attempt to telnet to the switch from host B fails, but pings to the other two hosts are successful. What is the issue?

- A. The switch interfaces need the appropriate IP addresses assigned.
- B. Host B and the switch need to be in the same subnet.
- C. The switch needs an appropriate default gateway assigned.
- D. The switch interface connected to the router is down.
- E. Host B needs to be assigned an IP address in VLAN 1.

Correct Answer: C

Section: (none)

Explanation

Explanation/Reference:

Explanation:

QUESTION 13

Which condition does the err-disabled status indicate on an Ethernet interface?

- A. There is a duplex mismatch.
- B. The device at the other end of the connection is powered off.
- C. The serial interface is disabled.
- D. The interface is configured with the shutdown command.
- E. Port security has disabled the interface.
- F. The interface is fully functioning.

Correct Answer: E

Section: (none)

Explanation

Explanation/Reference:

Explanation:

QUESTION 14

Which statement about RADIUS security is true?



<http://www.gratisexam.com/>

- A. It supports EAP authentication for connecting to wireless networks.
- B. It provides encrypted multiprotocol support.
- C. Device-administration packets are encrypted in their entirety.
- D. It ensures that user activity is fully anonymous.

Correct Answer: A

Section: (none)

Explanation

Explanation/Reference:

<http://www.gratisexam.com/>

Explanation:

QUESTION 15

A router has learned three possible routes that could be used to reach a destination network. One route is from EIGRP and has a composite metric of 20514560. Another route is from OSPF with a metric of 782. The last is from RIPv2 and has a metric of 4. Which route or routes will the router install in the routing table?



<http://www.gratisexam.com/>

- A. the RIPv2 route
- B. all three routes
- C. the OSPF and RIPv2 routes
- D. the OSPF route
- E. the EIGRP route

Correct Answer: E

Section: (none)

Explanation

Explanation/Reference:

Explanation:

QUESTION 16

Which two correctly describe steps in the OSI data encapsulation process? (Choose two.)

- A. The presentation layer translates bits into voltages for transmission across the physical link.
- B. The data link layer adds physical source and destination addresses and an FCS to the segment.
- C. Packets are created when the network layer adds Layer 3 addresses and control information to a segment.
- D. Packets are created when the network layer encapsulates a frame with source and destination host addresses and protocol-related control information.
- E. The transport layer divides a data stream into segments and may add reliability and flow control information.

Correct Answer: CE

Section: (none)

Explanation

<http://www.gratisexam.com/>

Explanation/Reference:

Explanation:

QUESTION 17

Which two statements about IPv4 multicast traffic are true? (Choose two.)

- A. It burdens the source host without affecting remote hosts.
- B. It uses a minimum amount of network bandwidth.
- C. It is bandwidth-intensive.
- D. It simultaneously delivers multiple streams of data.
- E. It is the most efficient way to deliver data to multiple receivers.

Correct Answer: DE

Section: (none)

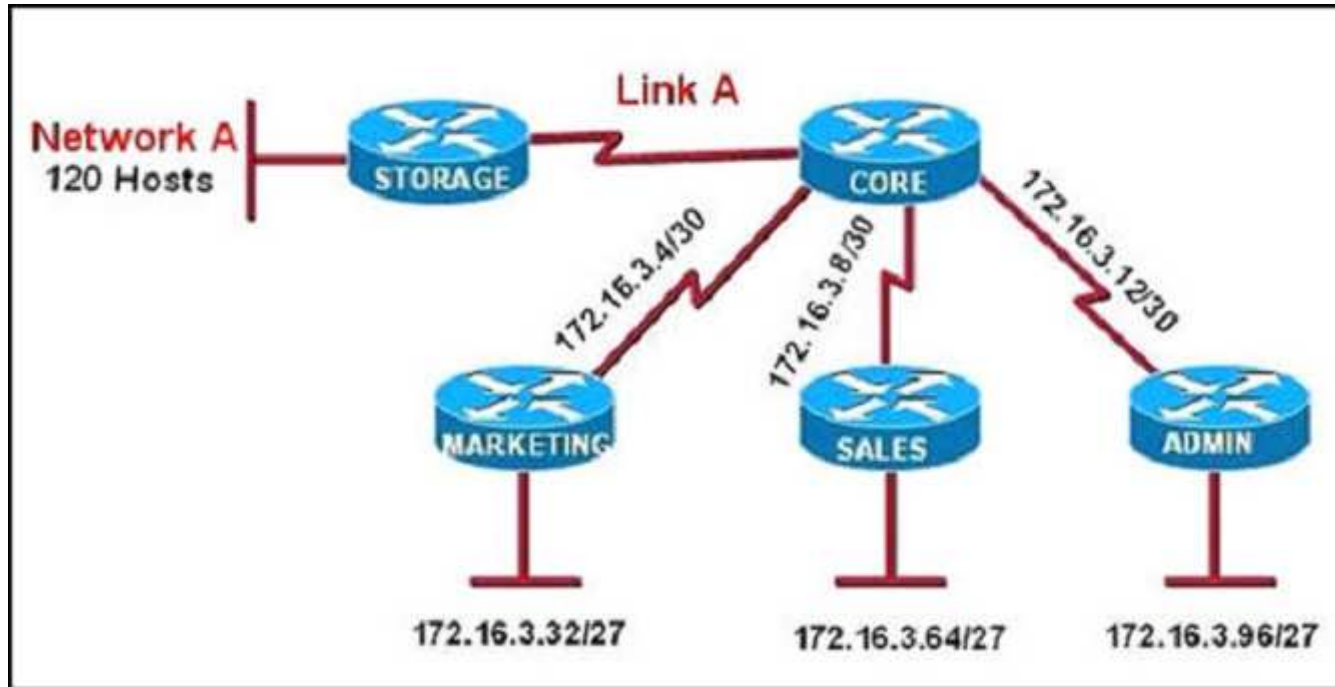
Explanation

Explanation/Reference:

Explanation:

QUESTION 18

Refer to the exhibit.



<http://www.gratisexam.com/>

All of the routers in the network are configured with the ip subnet-zero command. Which network addresses should be used for Link A and Network A? (Choose two.)

- A. Link A – 172.16.3.0/30
- B. Link A – 172.16.3.112/30
- C. Network A – 172.16.3.48/26
- D. Network A – 172.16.3.128/25
- E. Link A – 172.16.3.40/30

<http://www.gratisexam.com/>

F. Network A – 172.16.3.192/26

Correct Answer: AD

Section: (none)

Explanation

Explanation/Reference:

Explanation:

QUESTION 19

Which type of device can be replaced by the use of subinterfaces for VLAN routing?



<http://www.gratisexam.com/>

- A. Layer 2 bridge
- B. Layer 2 switch
- C. Layer 3 switch
- D. router

Correct Answer: C

Section: (none)

Explanation

Explanation/Reference:

Explanation:

QUESTION 20

Which Layer 2 protocol encapsulation type supports synchronous and asynchronous circuits and has built-in security mechanisms?

- A. X.25
- B. HDLC
- C. PPP
- D. Frame Relay

<http://www.gratisexam.com/>

Correct Answer: C

Section: (none)

Explanation

Explanation/Reference:

Explanation:

QUESTION 21

Which statement about LLDP is true?

- A. It is a Cisco proprietary protocol.
- B. It is configured in global configuration mode.



<http://www.gratisexam.com/>

- C. The LLDP update frequency is a fixed value.
- D. It runs over the transport layer.

Correct Answer: B

Section: (none)

Explanation

Explanation/Reference:

Explanation:

QUESTION 22

What are two benefits of private IPv4 IP addresses? (Choose two.)



<http://www.gratisexam.com/>

- A. They are routed the same as public IP addresses.
- B. They are less costly than public IP addresses.
- C. They can be assigned to devices without Internet connections.
- D. They eliminate the necessity for NAT policies.
- E. They eliminate duplicate IP conflicts.

Correct Answer: BC

Section: (none)

Explanation

Explanation/Reference:

Explanation:

QUESTION 23

If the primary root bridge experiences a power loss, which switch takes over?

- A. switch 0040.0BC0.90C5
- B. switch 00E0.F90B.6BE3
- C. switch 0004.9A1A.C182
- D. switch 00E0.F726.3DC6

Correct Answer: C

Section: (none)

Explanation

Explanation/Reference:

Explanation:

QUESTION 24

A network administrator is troubleshooting an EIGRP problem on a router and needs to confirm the IP addresses of the devices with which the router has

established adjacency. The retransmit interval and the queue counts for the adjacent routers also need to be checked. What command will display the required information?

- A. Router# show ip eigrp neighbors
- B. Router# show ip eigrp interfaces
- C. Router# show ip eigrp adjacency
- D. Router# show ip eigrp topology

Correct Answer: A

Section: (none)

Explanation

Explanation/Reference:

Explanation:

QUESTION 25

What is the authoritative source for an address lookup?

- A. a recursive DNS search
- B. the operating system cache
- C. the ISP local cache
- D. the browser cache

Correct Answer: A

Section: (none)

Explanation

Explanation/Reference:

Explanation:

QUESTION 26

Which command can you enter to verify that a BGP connection to a remote device is established?

- A. show ip bgp summary



<http://www.gratisexam.com/>

- B. show ip community-list
- C. show ip bgp paths
- D. show ip route

Correct Answer: A

Section: (none)

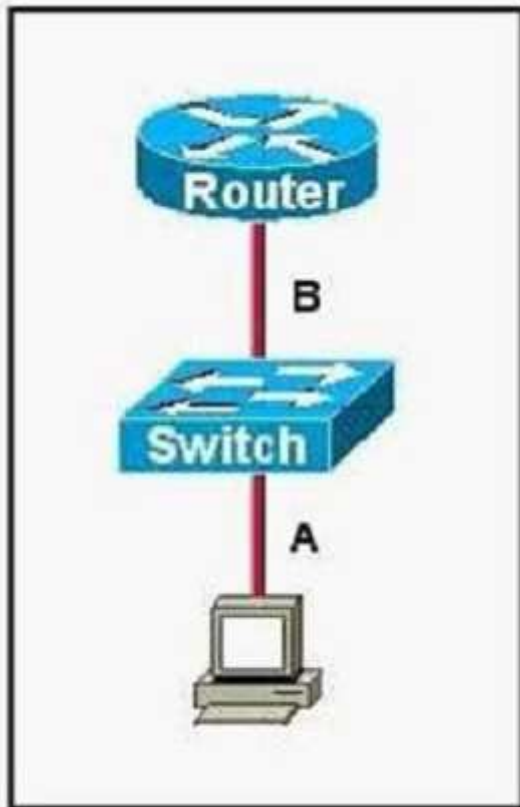
Explanation

Explanation/Reference:

Explanation:

QUESTION 27

Refer to the exhibit.



The two connected ports on the switch are not turning orange or green. Which three would be the most effective steps to troubleshoot this physical layer problem? (Choose three.)

- A. Ensure the switch has power.
- B. Reseat all cables.
- C. Ensure cable A is plugged into a trunk port.
- D. Ensure that the Ethernet encapsulations match on the interconnected router and switch ports.
- E. Reboot all of the devices.
- F. Ensure that cables A and B are straight-through cables.

Correct Answer: ABF

Section: (none)

Explanation

Explanation/Reference:

Explanation:

QUESTION 28

During which phase of PPPoE is PPP authentication performed?



<http://www.gratisexam.com/>

- A. the PPP Session phase
- B. Phase 2
- C. the Active Discovery phase
- D. the Authentication phase
- E. Phase 1

Correct Answer: A

Section: (none)

Explanation

Explanation/Reference:

Explanation:

QUESTION 29

Which three circumstances can cause a GRE tunnel to be in an up/down state? (Choose three.)

- A. The tunnel interface IP address is misconfigured.
- B. The tunnel interface is down.
- C. A valid route to the destination address is missing from the routing table.
- D. The tunnel address is routed through the tunnel itself.
- E. The ISP is blocking the traffic.
- F. An ACL is blocking the outbound traffic.

<http://www.gratisexam.com/>

Correct Answer: BCD

Section: (none)

Explanation

Explanation/Reference:

Explanation:

QUESTION 30

Which three statements about IPv6 prefixes are true? (Choose three.)

- A. FEC0::/10 is used for IPv6 broadcast.
- B. FC00::/7 is used in private networks.
- C. FE80::/8 is used for link-local unicast.
- D. FE80::/10 is used for link-local unicast.
- E. 2001::1/127 is used for loopback addresses.
- F. FF00::/8 is used for IPv6 multicast.

Correct Answer: BDF

Section: (none)

Explanation

Explanation/Reference:

Explanation:

QUESTION 31

Which command can you enter to display duplicate IP addresses that the DHCP server assigns?

- A. show ip dhcp conflict 10.0.2.12
- B. show ip dhcp database 10.0.2.12
- C. show ip dhcp server statistics
- D. show ip dhcp binding 10.0.2.12

Correct Answer: A

Section: (none)

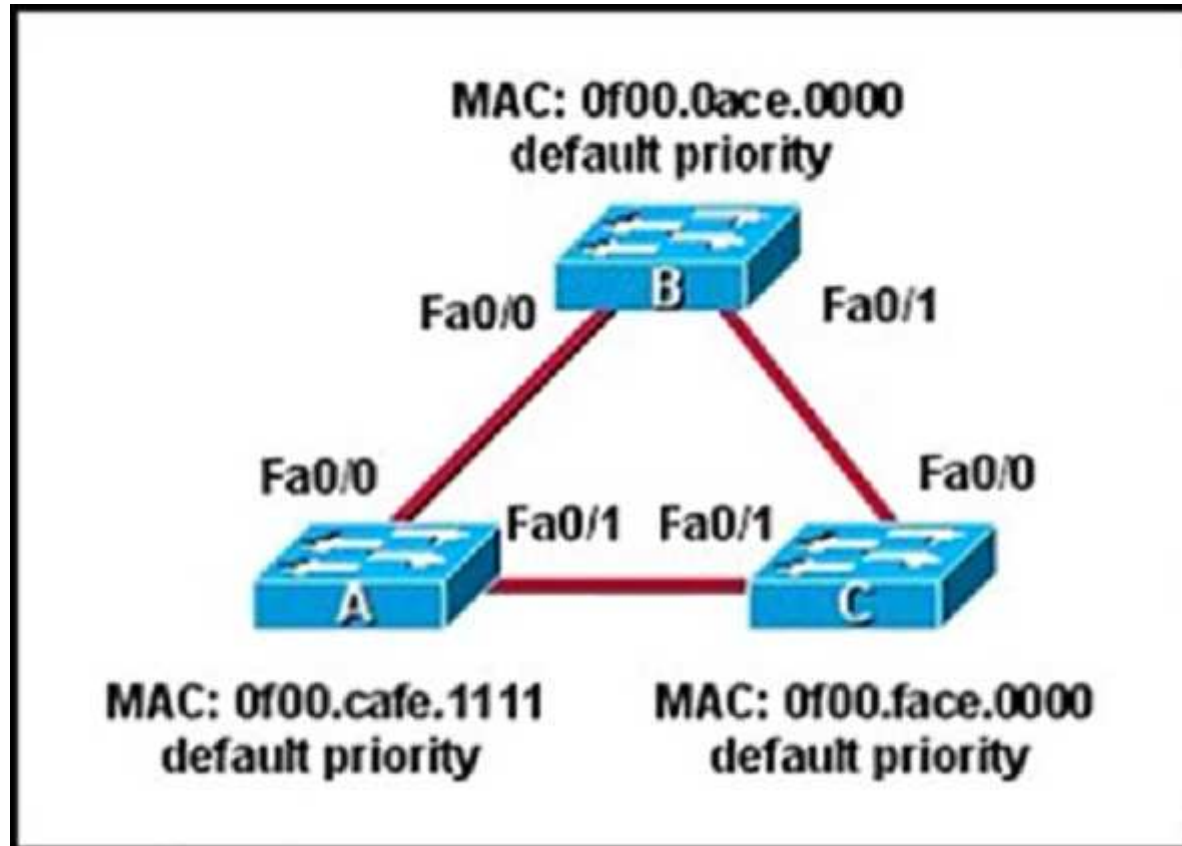
Explanation

Explanation/Reference:

Explanation:

QUESTION 32

Refer to the exhibit.



Which three ports will be STP designated ports if all the links are operating at the same bandwidth? (Choose three.)

- A. Switch B - Fa0/0
- B. Switch A - Fa0/1
- C. Switch B - Fa0/1
- D. Switch C - Fa0/1
- E. Switch A - Fa0/0

F. Switch C - Fa0/0

Correct Answer: ABC

Section: (none)

Explanation

Explanation/Reference:

Explanation:

QUESTION 33

Which two statements about using leased lines for your WAN infrastructure are true? (Choose two.)

- A. Leased lines provide inexpensive WAN access.
- B. Leased lines with sufficient bandwidth can avoid latency between endpoints.
- C. Leased lines require little installation and maintenance expertise.
- D. Leased lines provide highly flexible bandwidth scaling.
- E. Multiple leased lines can share a router interface.
- F. Leased lines support up to T1 link speeds.

Correct Answer: CD

Section: (none)

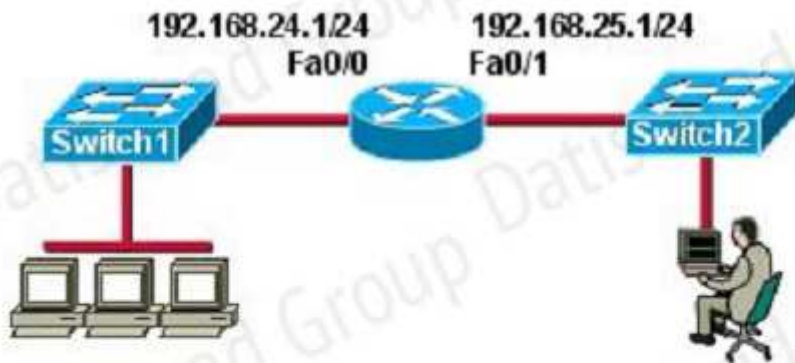
Explanation

Explanation/Reference:

Explanation:

QUESTION 34

Refer to the exhibit.



```
Switch1# show running-config
```

```
!  
hostname Switch1  
!  
enable secret 5 $1$8V43Wm12DE8klwUjf8EcZnFT7/  
enable password guess  
!  
<output omitted>  
!  
interface Vlan1  
 ip address 192.168.24.2 255.255.255.0  
 no ip route-cache  
!  
 ip http server  
!  
 line con 0  
 line vty 0 4  
 password cisco  
 login  
!  
 end
```



<http://www.gratisexam.com/>

The network administrator cannot connect to Switch 1 over a Telnet session, although the hosts attached to Switch1 can ping the interface Fa0/0 of the router. Given the information in the graphic and assuming that the router and Switch2 are configured properly, which of the following commands should be issued on Switch1 to correct this problem?

- A. Switch1(config)# ip default-gateway 192.168.24.1
- B. Switch1(config)# interface fa0/1Switch1(config-if)# switchport mode trunk
- C. Switch1(config)# line con0Switch1(config-line)# password ciscoSwitch1(config-line)# login
- D. Switch1(config)# interface fa0/1Switch1(config-if)# ip address 192.168.24.3 255.255.255.0
- E. Switch1(config)# interface fa0/1Switch1(config-if)# duplex fullSwitch1(config-if)# speed 100

Correct Answer: A

Section: (none)

Explanation

Explanation/Reference:

Explanation:

QUESTION 35

Which two statements about IPv6 and routing protocols are true? (Choose two.)

- A. EIGRPv3 was developed to support IPv6 routing.
- B. OSPFv3 was developed to support IPv6 routing.
- C. Loopback addresses are used to form routing adjacencies.
- D. EIGRP, OSPF, and BGP are the only routing protocols that support IPv6.
- E. Link-local addresses are used to form routing adjacencies.

Correct Answer: BE

Section: (none)

Explanation

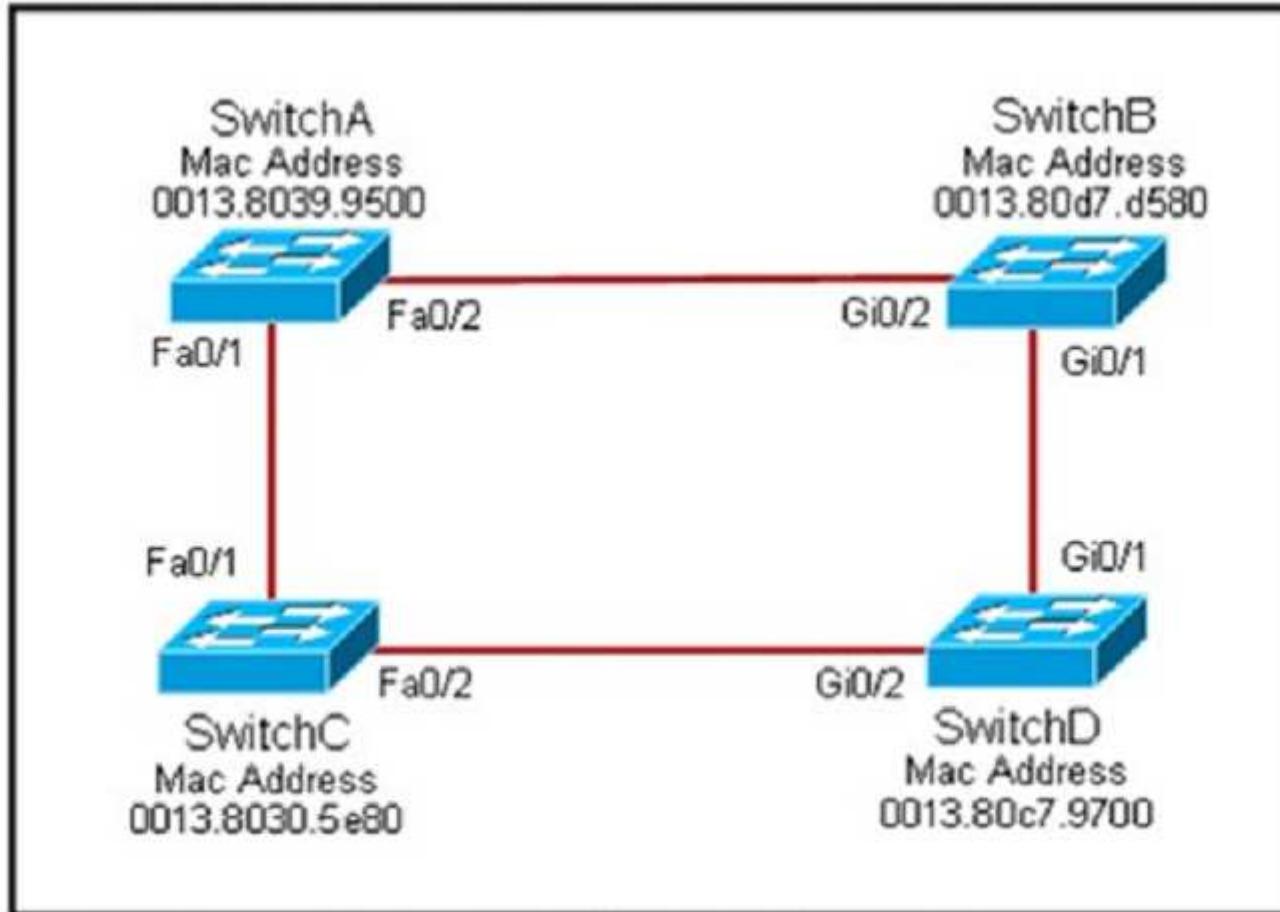
<http://www.gratisexam.com/>

Explanation/Reference:

Explanation:

QUESTION 36

Refer to the exhibit.





<http://www.gratisexam.com/>

Each of these four switches has been configured with a hostname, as well as being configured to run RSTP. No other configuration changes have been made. Which three of these show the correct RSTP port roles for the indicated switches and interfaces? (Choose three.)

- A. SwitchD, Gi0/2, root
- B. SwitchA, Fa0/2, designated
- C. SwitchB, Gi0/1, designated
- D. SwitchA, Fa0/1, root
- E. SwitchB, Gi0/2, root
- F. SwitchC, Fa0/2, root

Correct Answer: ABD

Section: (none)

Explanation

Explanation/Reference:

Explanation:

QUESTION 37

Which feature builds a FIB and an adjacency table to expedite packet forwarding?



<http://www.gratisexam.com/>

- A. cut through
- B. fast switching

- C. process switching
- D. Cisco Express Forwarding

Correct Answer: D

Section: (none)

Explanation

Explanation/Reference:

Explanation:

QUESTION 38

Which command can you enter to verify that a 128-bit address is live and responding?

- A. traceroute
- B. telnet
- C. ping
- D. ping ipv6

Correct Answer: D

Section: (none)

Explanation

Explanation/Reference:

Explanation:

QUESTION 39

What will happen if a private IP address is assigned to a public interface connected to an ISP?

- A. A conflict of IP addresses happens, because other public routers can use the same range.
- B. Addresses in a private range will not be routed on the Internet backbone.
- C. Only the ISP router will have the capability to access the public network.
- D. The NAT process will be used to translate this address to a valid IP address.

Correct Answer: B

Section: (none)

Explanation

Explanation/Reference:

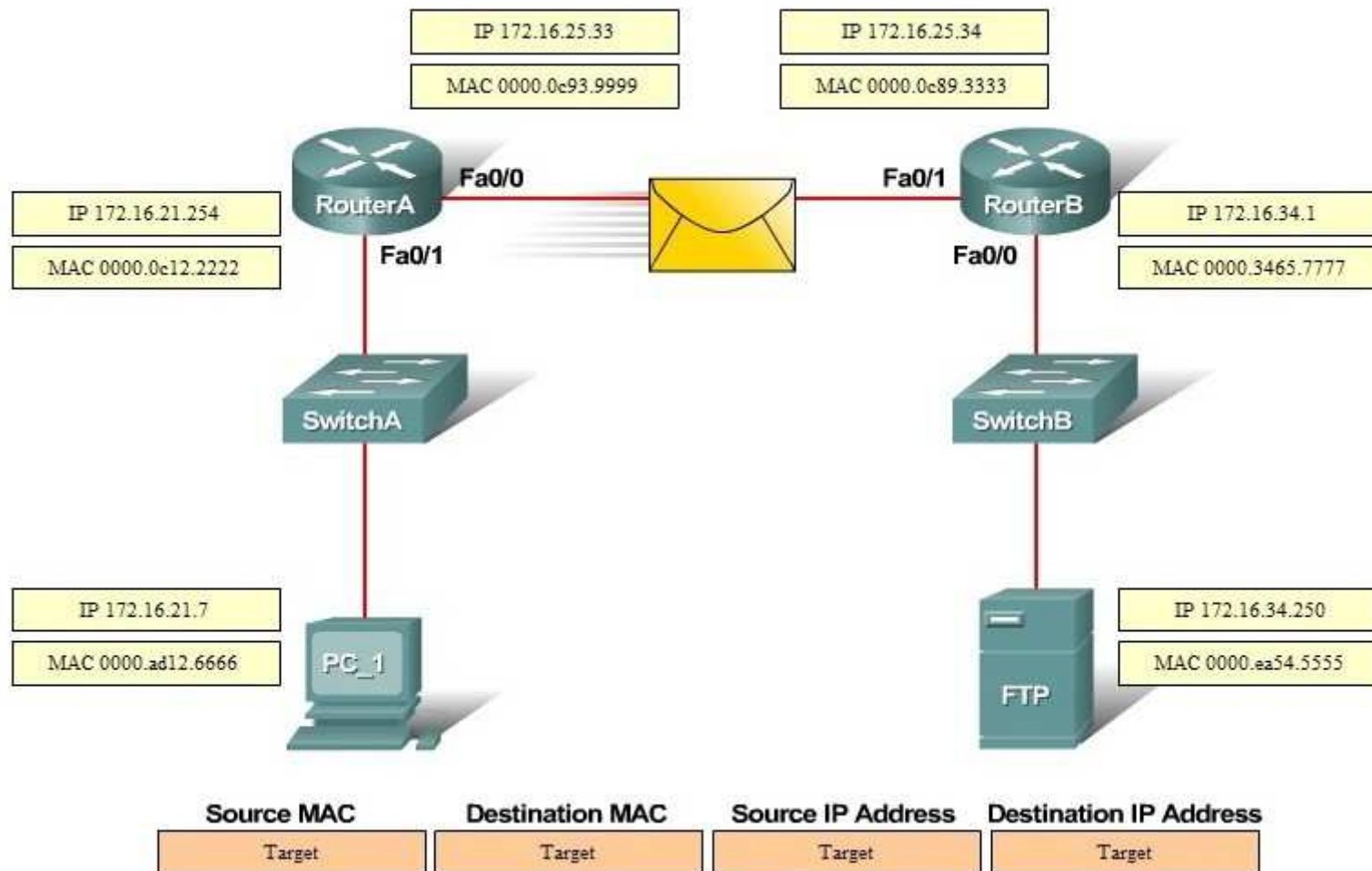
Explanation:

QUESTION 40

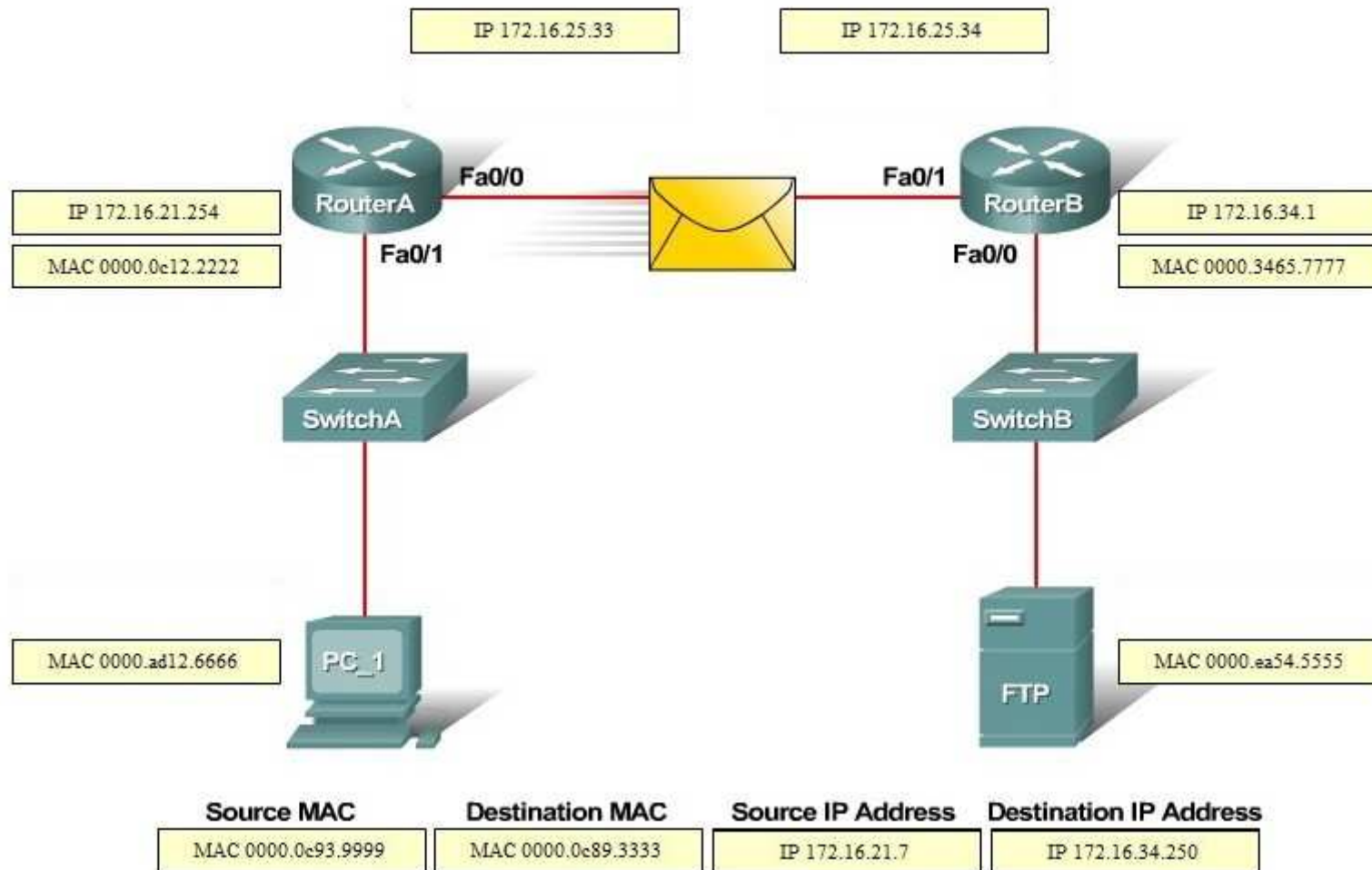
DRAG DROP

PC_1 is sending packets to the FTP server. Consider the packets as they leave RouterA interface Fa0/0 towards RouterB. Drag the correct frame and packet address to their place in the table.

Select and Place:



Correct Answer:



Section: (none)

Explanation

Explanation/Reference:

QUESTION 41

What are two reasons that duplex mismatches can be difficult to diagnose? (Choose two.)



<http://www.gratisexam.com/>

- A. The interface displays a connected (up/up) state even when the duplex settings are mismatched.
- B. 1-Gbps interfaces are full-duplex by default.
- C. Full-duplex interfaces use CSMA/CD logic, so mismatches may be disguised by collisions.
- D. The symptoms of a duplex mismatch may be intermittent.
- E. Autonegotiation is disabled.

Correct Answer: AD

Section: (none)

Explanation

Explanation/Reference:

Explanation:

QUESTION 42

Which condition indicates that service password-encryption is enabled?

- A. The local username password is in clear text in the configuration.
- B. The enable secret is in clear text in the configuration.
- C. The local username password is encrypted in the configuration.
- D. The enable secret is encrypted in the configuration.

Correct Answer: C

Section: (none)

Explanation

Explanation/Reference:

Explanation:

<http://www.gratisexam.com/>

QUESTION 43

Which command would you configure globally on a Cisco router that would allow you to view directly connected Cisco devices?

- A. cdp run
- B. enable cdp
- C. cdp enable
- D. run cdp

Correct Answer: A

Section: (none)

Explanation

Explanation/Reference:

Explanation:



<http://www.gratisexam.com/>