

PrepKing

Number: 640-864
Passing Score: 792
Time Limit: 120 min
File Version: 9.0



<http://www.gratisexam.com/>

PrepKing 640-864

Exam A

QUESTION 1

Which consideration is the most important for the network designer when considering IP routing?

- A. convergence
- B. scalability
- C. on-demand routing
- D. redistribution

Correct Answer: A

Section: (none)

Explanation

Explanation/Reference:

QUESTION 2

You want to gather as much detail as possible during a network audit, to include data time stamping across a large number of interfaces, customized according to interface, with a minimal impact on the network devices themselves. Which tool would you use to meet these requirements?

- A. RMON
- B. SNMPV3
- C. NetFlow
- D. Cisco Discovery Protocol

Correct Answer: C

Section: (none)

Explanation

Explanation/Reference:

QUESTION 3

DataQuirk is a web-based medical transcription company for exotic-animal veterinarians. The company recently added a third ISP for international business. They are organizing the enterprise network into a fully operational Enterprise Edge.

To which two modules will the three ISPs be directly related? (Choose two)

- A. PSTN
- B. E- Commerce
- C. WAN/MAN
- D. Edge Distribution
- E. Internet Connectivity
- F. Remote Access VPN

Correct Answer: BE

Section: (none)

Explanation

Explanation/Reference:

QUESTION 4

Which two of these practices are considered to be best practices when designing the access layer for the enterprise campus? (Choose two)

- A. Implement all of the services (QoS, security, STP, and so on) in the access layer, offloading the work from the distribution and core layers.
- B. Always use a Spanning Tree Protocol; preferred is Rapid PVST+.
- C. Use automatic VLAN pruning to prune unused VLANs from trunked interface to avoid broadcast propagation.
- D. Avoid wasted processing by disabling STP where loops are not possible.
- E. Use VTP transparent mode to decrease the potential for operational error "First Test, First Pass" -
www.lead2pass.com 4
Cisco 640-864 Exam

Correct Answer: BE

Section: (none)

Explanation

Explanation/Reference:

QUESTION 5

With deterministic Wireless LAN Controller redundancy design, the different options available to the designer have their own strengths. Which one of these statements is an example of such a strength?

- A. Dynamic load balancing, or salt-and-pepper access point design, avoids the potential impact of oversubscription on aggregate network performance.
- B. N+N redundancy configuration allows logically grouping access points on controllers to minimize intercontroller roaming events.
- C. N+N+1 redundancy configuration has the least impact to system management because all of the controllers are collocated in an NOC or data center
- D. N+1 redundancy configuration uses Layer 3 intercontroller roaming, maintaining traffic on the same subnet for more efficiency.

Correct Answer: B

Section: (none)

Explanation

Explanation/Reference:

QUESTION 6



<http://www.gratisexam.com/>

Which of these statements is true concerning the data center access layer design?

- A. The access layer in the data center is typically built at Layer 3, which allows for better shaping of services across multiple servers.
- B. With Layer 2 access, the default gateway for the servers can be configured at the access or aggregation layer.
- C. A dual-homing NIC requires a VLAN or trunk between the two access switches to support the dual IP address on the two server links to two separate switches.
- D. The access layer is normally not required, as dual homing is standard from the servers to the aggregation layer.

Correct Answer: B

Section: (none)

Explanation

Explanation/Reference:

QUESTION 7

Which one of these statements should the designer keep in mind when considering the advanced routing features?

- A. one-way router redistribution avoids the requirement for state or default routes.
- B. Redistribution, summarization, and filtering are most often applied between the campus core and enterprise edge.
- C. Filtering only occurs on the routing domain boundary using redistribution.
- D. Summarize routes at the core toward the distribution layer.
- E. The hierarchical flexibility of IPv6 addressing avoids the requirement for routing traffic reduction using aggregation.

Correct Answer: B

Section: (none)

Explanation

Explanation/Reference:

QUESTION 8

Which two statements about designing the Data Center Access layer are correct? (Choose two)

"First Test, First Pass" - www.lead2pass.com 5
Cisco 640-864 Exam

- A. Multiport NIC servers should each have their own IP address
- B. Layer 3 connectivity should never be used in the access layer
- C. Layer 2 connectivity is primarily implemented in the access layer
- D. Multiport NIC servers should never be used in the access layer
- E. Layer 2 clustering implementation requires servers to be Layer 2 adjacent

Correct Answer: CE

Section: (none)

Explanation

Explanation/Reference:

QUESTION 9

Which IPv6 feature enables routing to distribute connection requests to the nearest content server?

- A. Link-local
- B. Site-local
- C. Anycast
- D. Multicast
- E. Global aggregatable

Correct Answer: C

Section: (none)

Explanation

Explanation/Reference:

QUESTION 10

Which one of these statements is true about addressing redundancy within the WAN environment?

- A. The reliability and speed of DSL allow for cost savings by not including redundant links.
- B. CAMDM and dark fiber offer advanced redundancy features such as automatic backup and repair mechanism to cope system faults.
- C. An SLA is one way to eliminate the need for redundancy.
- D. The failure of a single SONET/SDH link or network element does not lead to failure of the entire network.

Correct Answer: D

Section: (none)

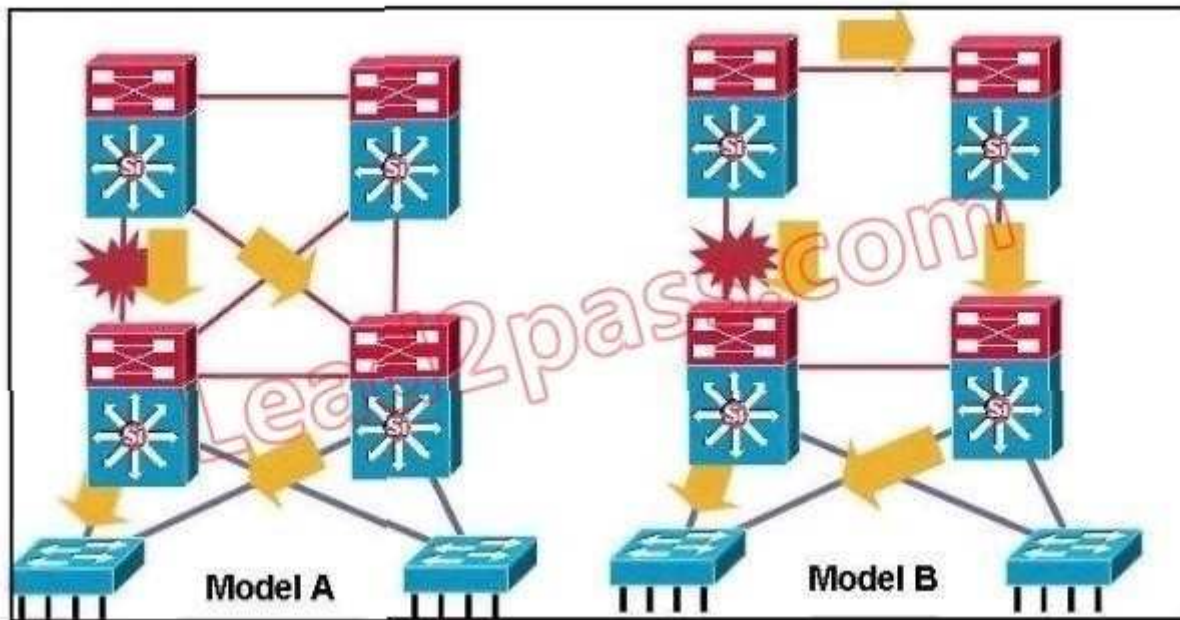
Explanation

Explanation/Reference:

QUESTION 11

Refer to the exhibit.

"First Test, First Pass" - www.lead2pass.com 6
Cisco 640-864 Exam



Model A is the recommended design for routing between Building Distribution switches and Campus Core switches. Which two statements describe the reasons? (Choose two)

- A. Model A uses timer-based non-deterministic convergence.
- B. Model A uses timer-based, providing fast convergence to the remaining path.
- C. In Model A, a link or box failure does not require routing protocol convergence.
- D. In Model A, the Layer 3 redundant equal cost links support fast convergence.

Correct Answer: CD

Section: (none)

Explanation

Explanation/Reference:

QUESTION 12

Which one of these statements is true concerning the enterprise data center?

- A. It can be located either at the enterprise campus or at a remote branch.
- B. Remote data center connectivity requirements align with the small office design.
- C. The data center designs will differ substantially depending on whether the location is on campus or remote.
- D. A remote branch with a data center becomes the enterprise campus.

Correct Answer: C

Section: (none)

Explanation

Explanation/Reference:

QUESTION 13

Which Cisco security management solution provides the means to identify, isolate, and counter security threats to the network?

- A. Adaptive Security Device Manager
- B. Intrusion Prevention Device Manager
- C. Security Device Manager
- D. Cisco Security Manager
- E. Cisco Security Monitoring, Analysis, and Response System "First Test, First Pass" - www.lead2pass.com 7 Cisco 640-864 Exam

Correct Answer: E

Section: (none)

Explanation

Explanation/Reference:

QUESTION 14

A global corporation has an internal network with the following characteristics:

- 2,000,000+ hosts
- 10,000 + routers
- Internal connectivity
- high traffic volumes with business partners and customers

Which statement best describes what a flexible IPv6 strategy would look like for this corporation?

- A. Both hosts and routers would run dual stack
- B. Hosts would run IPv4 and routers would run native IPv6
- C. Hosts would run dual stack and routers would run IPv4 only
- D. Hosts would run IPv6 and routers would run native IPv6

Correct Answer: A

Section: (none)

Explanation

Explanation/Reference:

QUESTION 15

Which of these is the best routing deployment for a single dedicated link to an ISP for Internet access?

- A. EIGRP
- B. RIP
- C. BGP
- D. Static
- E. OSPF

Correct Answer: D

Section: (none)

Explanation

Explanation/Reference:

QUESTION 16

In terms of remote office design, which one of these statements is a characteristics only of a small remote office (up to 50 user), and not of medium or remote offices?

- A. Link redundancy to access layer switches is not possible with an integrated design.
- B. A collapsed access and distribution layer is required.
- C. There are no loops in the network design.
- D. Layer 3 services such as DHCP, firewall, and NAT are provided by enterprise campus.

Correct Answer: C

Section: (none)

Explanation

Explanation/Reference:

QUESTION 17

Which two statements about the data Center Aggregation layer are correct? (Choose two)

- A. Layer 4 through layer 7 services are provided in that layer
- B. STP should never be supported in that layer
- C. That layer is the critical point for control and application services
- D. Layer 2 connectivity is provided in that layer from the data center to the core "First Test, First Pass" -
www.lead2pass.com 8
Cisco 640-864 Exam

Correct Answer: AC

Section: (none)

Explanation

Explanation/Reference:

QUESTION 18

According to Cisco, which four improvements are the main benefits of the PPDIOO lifecycle approach to network design? (Choose four)

- A. faster ROI
- B. improved business agility
- C. increased network availability
- D. faster access to applications and services
- E. lower total cost of network ownership
- F. better implementation team engagement

Correct Answer: BCDE

Section: (none)

Explanation

Explanation/Reference:

QUESTION 19

With respect to IPv6 addressing, from a design perspective, which of these statements is it important to keep in

mind?

- A. IPv6 addressing provides convenience of anycast addressing without any configuration requirements.
- B. IPv6 does not use multicast addressing.
- C. An IPv6 router will not forward packets from one link to other links if the packet has either a link-local source or a link-local destination address.
- D. Dynamic address assignment requires DHCPv6.

Correct Answer: C

Section: (none)

Explanation

Explanation/Reference:

QUESTION 20

When designing the infrastructure protection portion for the enterprise edge, which of these solutions would be the most appropriate solution to consider?

- A. 802.1X
- B. ACLs in the core layer
- C. Cisco Security MARS
- D. AAA

Correct Answer: D

Section: (none)

Explanation

Explanation/Reference:

QUESTION 21

What is primary consideration when choosing a routed network design over a traditional campus network design?

- A. Layer 3 service support at the network edge
- B. the routing protocol choice: open (OSPF) or proprietary (EIGRP)
- C. the routing abilities of the host devices
- D. the need to control the broadcast domains within the campus core

Correct Answer: A

Section: (none)

Explanation

Explanation/Reference:

"First Test, First Pass" - www.lead2pass.com 9
Cisco 640-864 Exam

QUESTION 22

DRAG DROP

Drag the characteristics of the traditional campus network on the left to the most appropriate hierarchical network layer on the right.

	Access
high level of availability, scalability and fast convergence	
enforces policy within the network	
routing boundary (dynamic, summarization, static)	Distribution
provide security, QoS, and IP multicast to network	
provides a limited set of services	Core
the most feature-rich parts of the campus network	

A. Answer:

	Access
high level of availability, scalability and fast convergence	provide security, QoS, and IP multic
enforces policy within the network	the most feature-rich parts of the ca
routing boundary (dynamic, summarization, static)	Distribution
provide security, QoS, and IP multicast to network	enforces policy within the ne
provides a limited set of services	routing boundary (dynamic, summar
the most feature-rich parts of the campus network	Core
	high level of availability, scalability and
	provides a limited set of ser

Correct Answer:

Section: (none)

Explanation

Explanation/Reference:

QUESTION 23

Which two statements best describe an OSPF deployment? (Choose two)

- A. ABR provides automatic classful network boundary summarization.
- B. ABR requires manual configuration for classful network summarization
- C. External routes are propagated into the autonomous system from stub areas via ASBR.
- D. External routes are propagated into the autonomous system from regular areas or NSSA via ASBR.
- E. External routes are propagated into the autonomous system from regular areas or NSSA via ABR.

Correct Answer: BD

Section: (none)

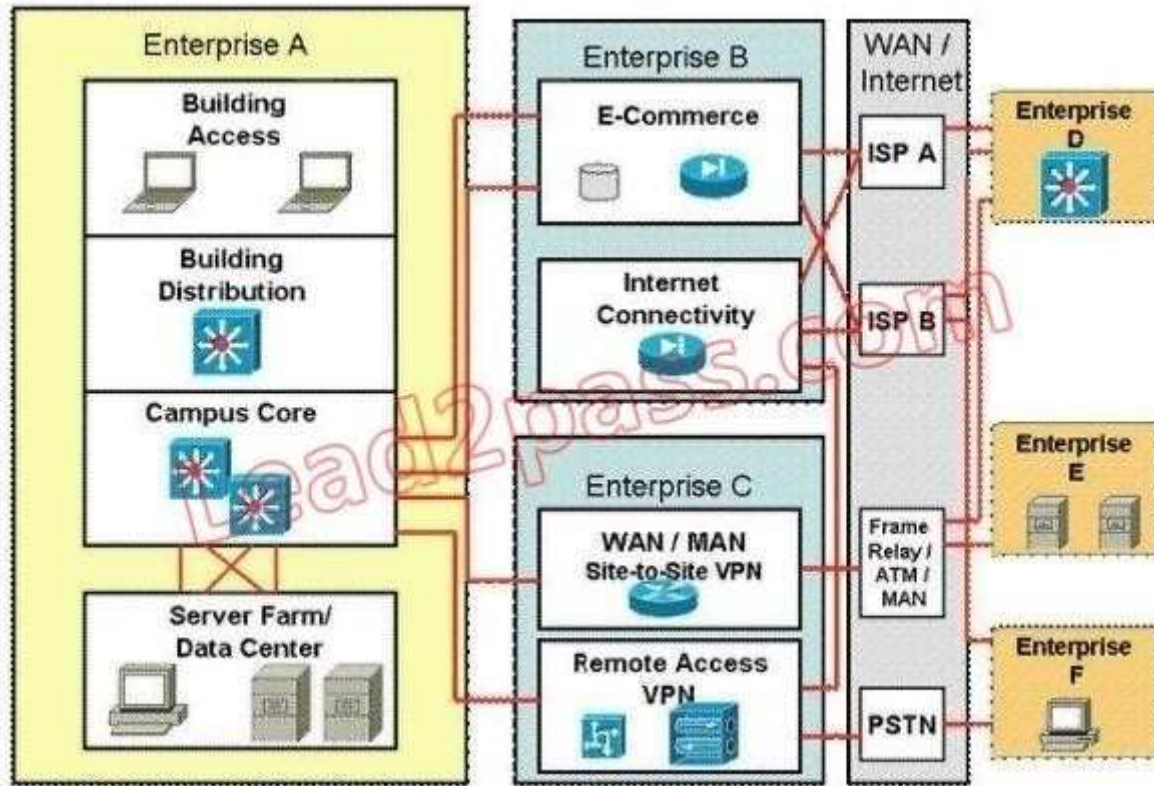
Explanation

Explanation/Reference:

QUESTION 24

Refer to the exhibit.

"First Test, First Pass" - www.lead2pass.com 10
Cisco 640-864 Exam



Which module is the Enterprise WAN module?

- A. Enterprise A
- B. Enterprise B
- C. Enterprise C
- D. Enterprise D
- E. Enterprise E
- F. Enterprise F

Correct Answer: C

Section: (none)

Explanation

Explanation/Reference:

QUESTION 25

A large enterprise requires sensitive information be transmitted over a public infrastructure. It requires confidentiality, integrity, and authenticity. Which security solution best meets these requirements?

- A. Cisco IOS Firewall
- B. Intrusion Prevention
- C. IPSEC
- D. AAA
- E. Traffic Guard Protector
- F. SECURE CONECTIVITY

Correct Answer: C

Section: (none)

Explanation

Explanation/Reference:

"First Test, First Pass" - www.lead2pass.com 11
Cisco 640-864 Exam

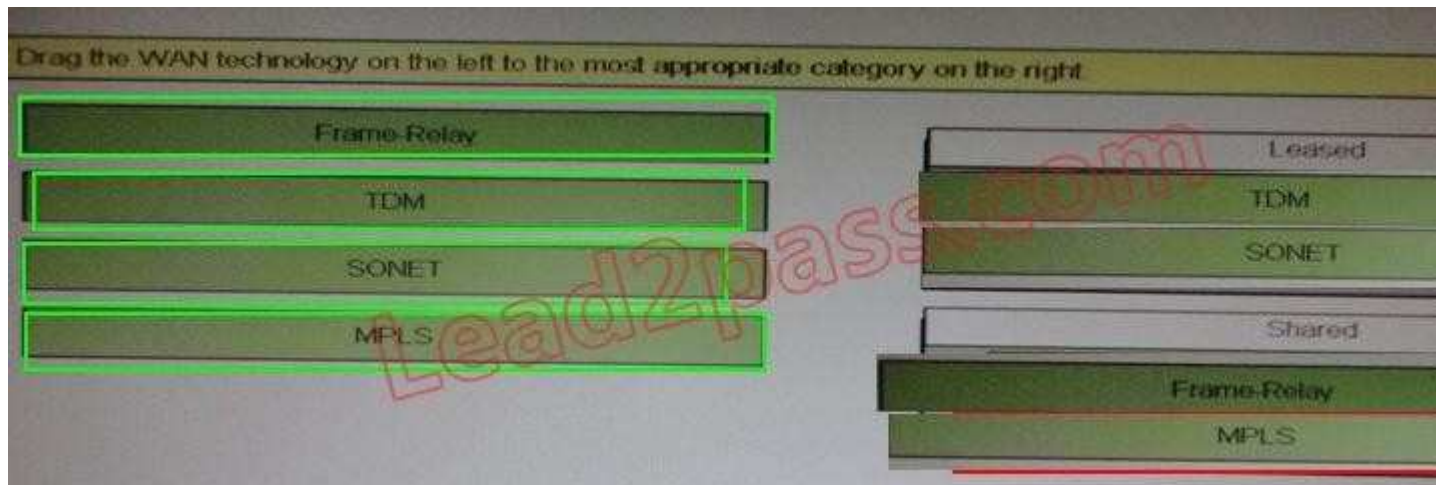
QUESTION 26

DRAG DROP

Drag the WAN technology on the left to the most appropriate category on the right

Frame-Relay	Leased
TDM	
SONET	
MPLS	Shared

A. Answer:



Correct Answer:

Section: (none)

Explanation

Explanation/Reference:

QUESTION 27

There are a number of advantages to using virtualization within the data center module. Which the following two are samples of these advantages?

- A. Virtualization consolidates many low-performance devices into a few high-performance devices, providing a more efficient utilization of hardware and increasing the price/performance ratio.
- B. Virtualization compartmentalizes a single device into a few high-performance devices, providing a more efficient utilization of hardware and increasing the price/performance ratio.
- C. Dynamic forcibility eliminates the need to add, reassign, or repurpose resources in the system.
- D. Virtualization separates user via different physical networks into groups with visibility into only their logical network.
- E. Virtualization provides distinct security policies per physical device.

Correct Answer: AB

Section: (none)

Explanation

Explanation/Reference:

QUESTION 28

DRAG DROP

"First Test, First Pass" - www.lead2pass.com 12
Cisco 640-864 Exam

Drag the data center property on the left to the design aspect on the right it is most apt to

variability of computing load, computing power and memory requirements

disasters, fire suppression and alarm systems

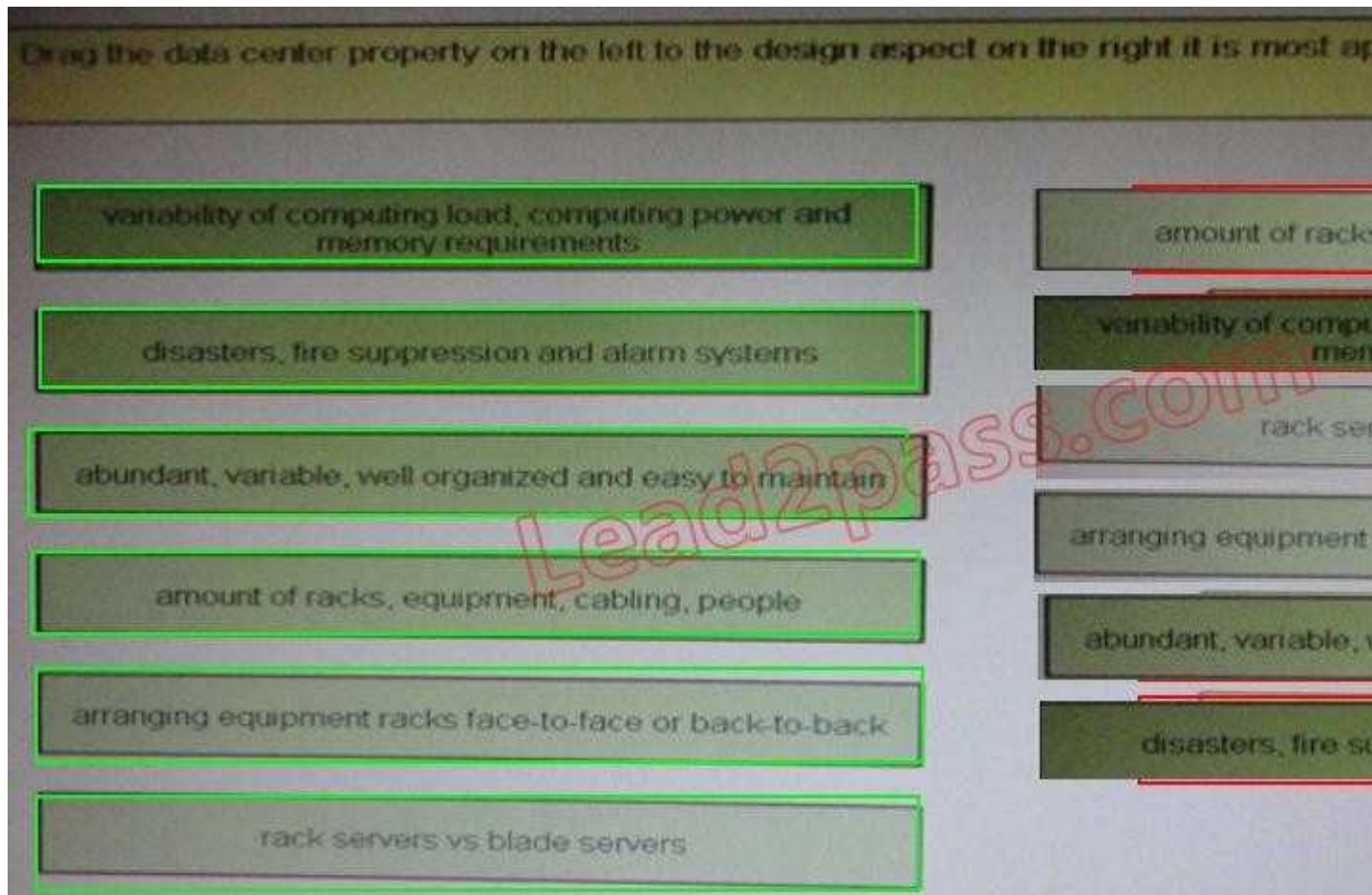
abundant, variable, well organized and easy to maintain

amount of racks, equipment, cabling, people

arranging equipment racks face-to-face or back-to-back

rack servers vs blade servers

A. Answer:



Correct Answer:

Section: (none)

Explanation

Explanation/Reference:

QUESTION 29

When selecting which hardware switches to use throughout an enterprise campus switched network, which consideration is not relevant?

- A. whether data link layer switching based the MAC address is required
- B. the number of shared media segments
- C. which infrastructure service capabilities are required
- D. whether to support Layer 3 services at the network edge.

Correct Answer: B

Section: (none)

Explanation

Explanation/Reference:

QUESTION 30

Layer 2 switching is exclusively used in which Enterprise Campus Module layer?

- A. Server Farm
- B. Campus Core
- C. Building Access
- D. Building Distribution
- E. Internet Connectivity

Correct Answer: C

Section: (none)

Explanation

Explanation/Reference:

QUESTION 31

Which one of these statements describes why, from a design perspective, a managed VPN approach for enterprise teleworkers is a most effective?

- A. A managed VPN solution uses a cost effective, on-demand VPN tunnel back to the enterprise
- B. This solution supports all teleworkers who do not require voice or video
- C. This architecture provides centralized management where the enterprise can apply security policies and push configurations.
- D. It provides complete flexibility for remote access through a wireless hotspot or a guest network at a host, in addition to a home office.

Correct Answer: C

Section: (none)

Explanation

Explanation/Reference:

QUESTION 32

Which one of these statements is true when considering the design of voice and video services for the enterprise campus network?

- A. Access layer switches should support 802.1Q trunking and 802.1p for Layer 2 CoS packet marking on Layer 2 ports with IP phones connected.
- B. Combining voice and data and a single VLAN simplifies QoS trust boundaries, VLAN access control, and ease of management.
- C. Data devices will also require access to priority queues via packet tagging.
- D. Fixed network delays (serialization, propagation, and so on) are generally unpredictable and more difficult to calculate than variable network delays.

Correct Answer: A

Section: (none)

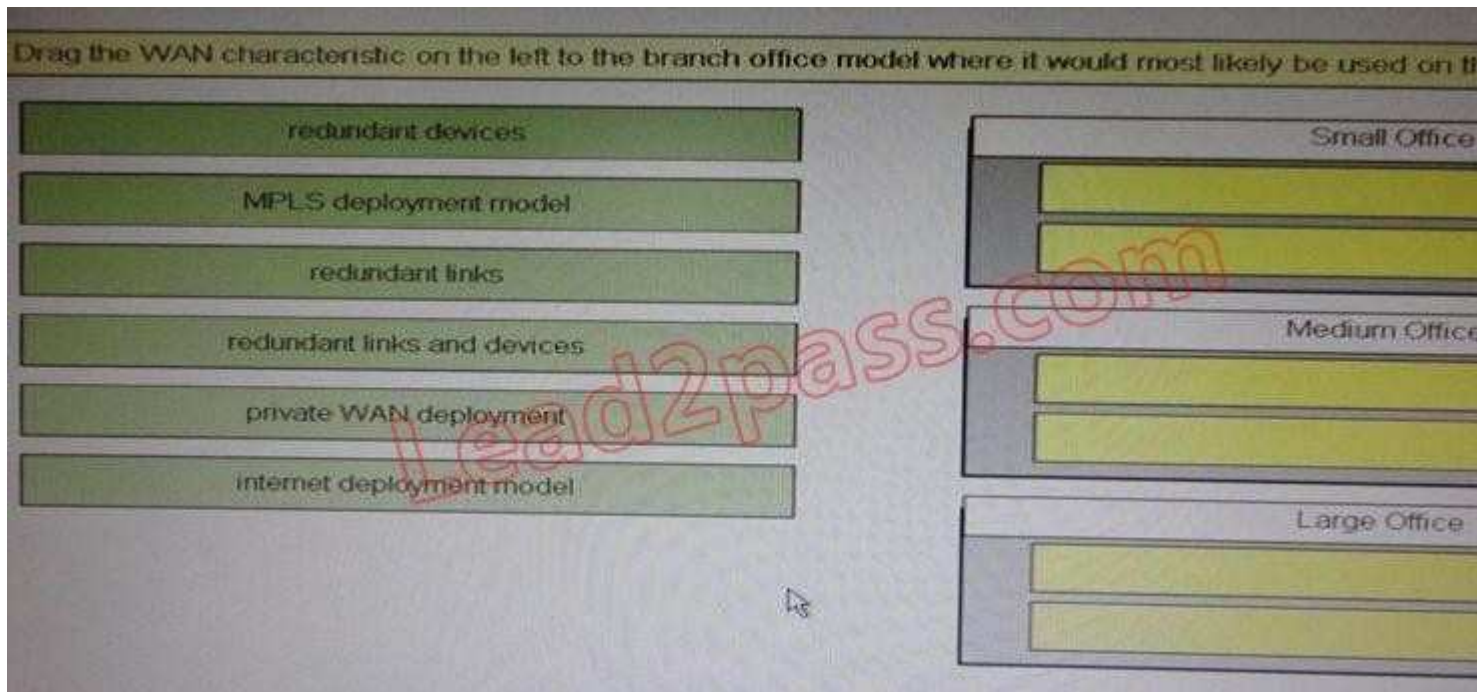
Explanation

Explanation/Reference:

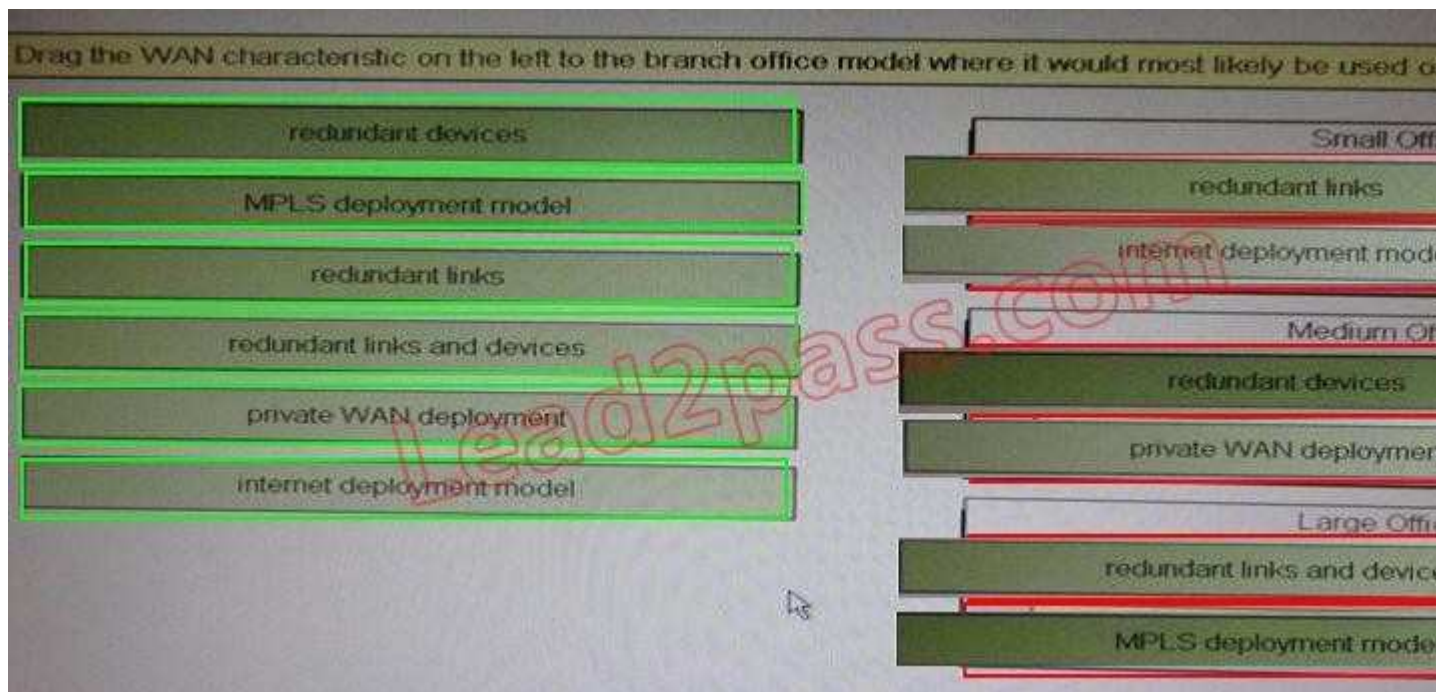
QUESTION 33

DRAG DROP

"First Test, First Pass" - www.lead2pass.com 14
Cisco 640-864 Exam



A. Answer:



Correct Answer:

Section: (none)

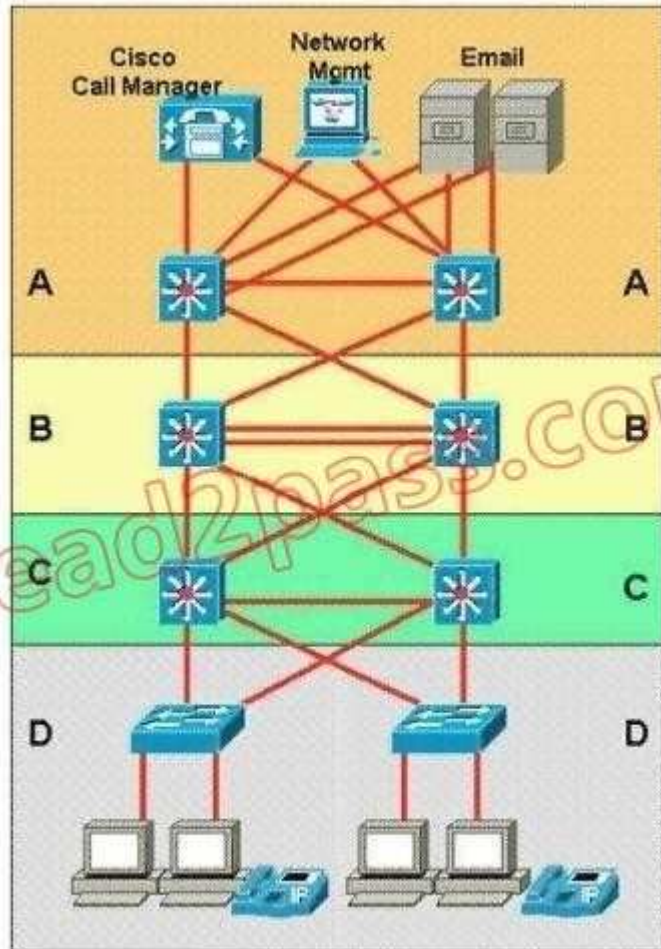
Explanation

Explanation/Reference:

QUESTION 34

Refer to the exhibit.

"First Test, First Pass" - www.lead2pass.com 15
Cisco 640-864 Exam



Which two statements correctly identify the layers of the Enterprise Campus module? (Choose two)

- A. A is the Data Center Module and C is the Campus Core layer
- B. A is the Data Center Module and D is the Building Access layer
- C. B is the Campus Core layer and C is the Building Distribution layer
- D. B is the Building Distribution layer and C is the Campus Core layer
- E. A is the Internet Connectivity layer and B is the Campus Core layer
- F. B is the Building Distribution layer and D is the Building Access layer

Correct Answer: BC

Section: (none)

Explanation

Explanation/Reference:

QUESTION 35

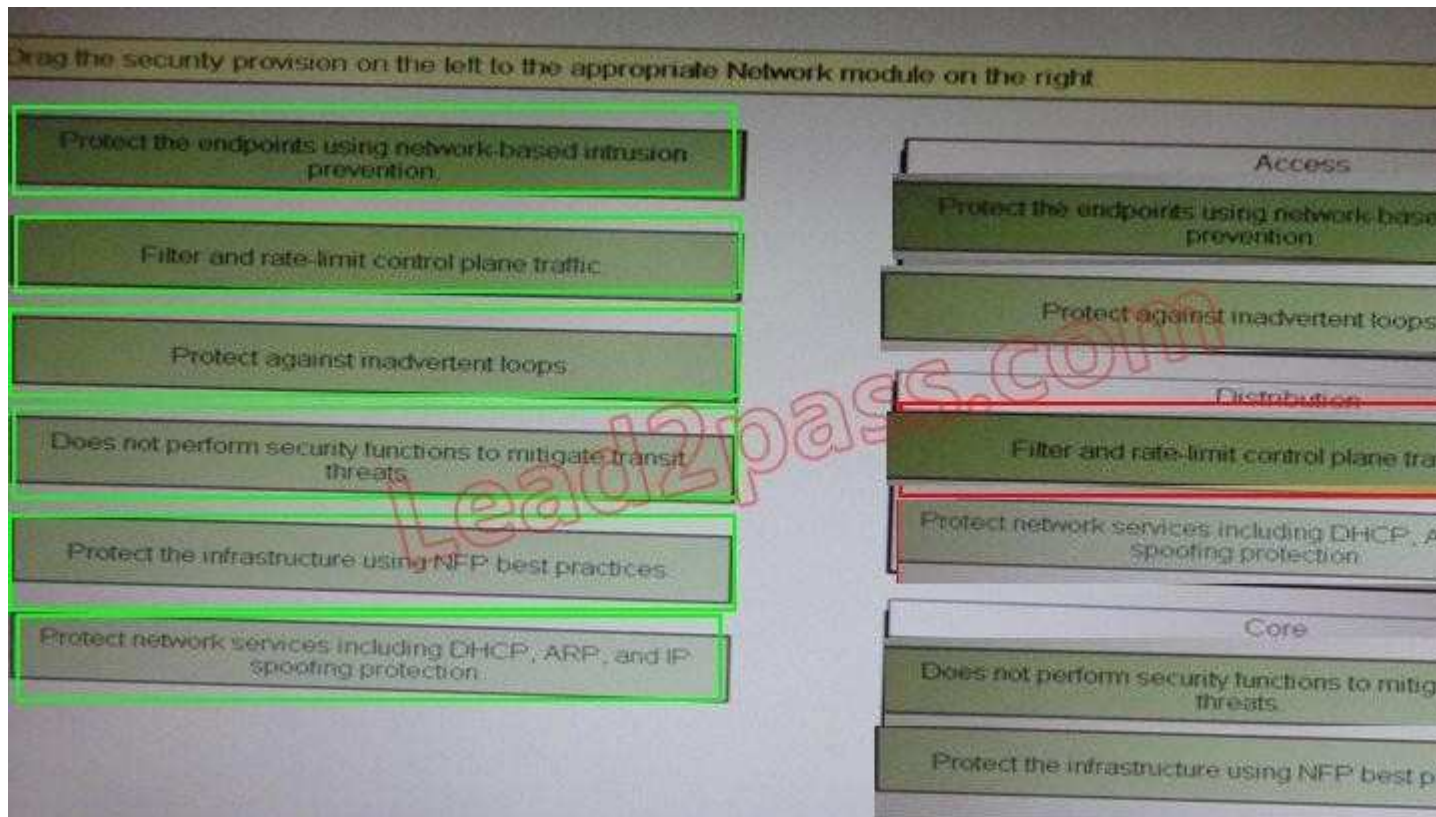
DRAG DROP

"First Test, First Pass" - www.lead2pass.com 16
Cisco 640-864 Exam

Drag the security provision on the left to the appropriate Network module on the right.

Security Provision	Access	Distribution	Core
Protect the endpoints using network-based intrusion prevention.			
Filter and rate-limit control plane traffic.			
Protect against inadvertent loops.			
Does not perform security functions to mitigate transit threats.			
Protect the infrastructure using NFP best practices.			
Protect network services including DHCP, ARP, and IP spoofing protection.			

A. Answer:



Correct Answer:

Section: (none)

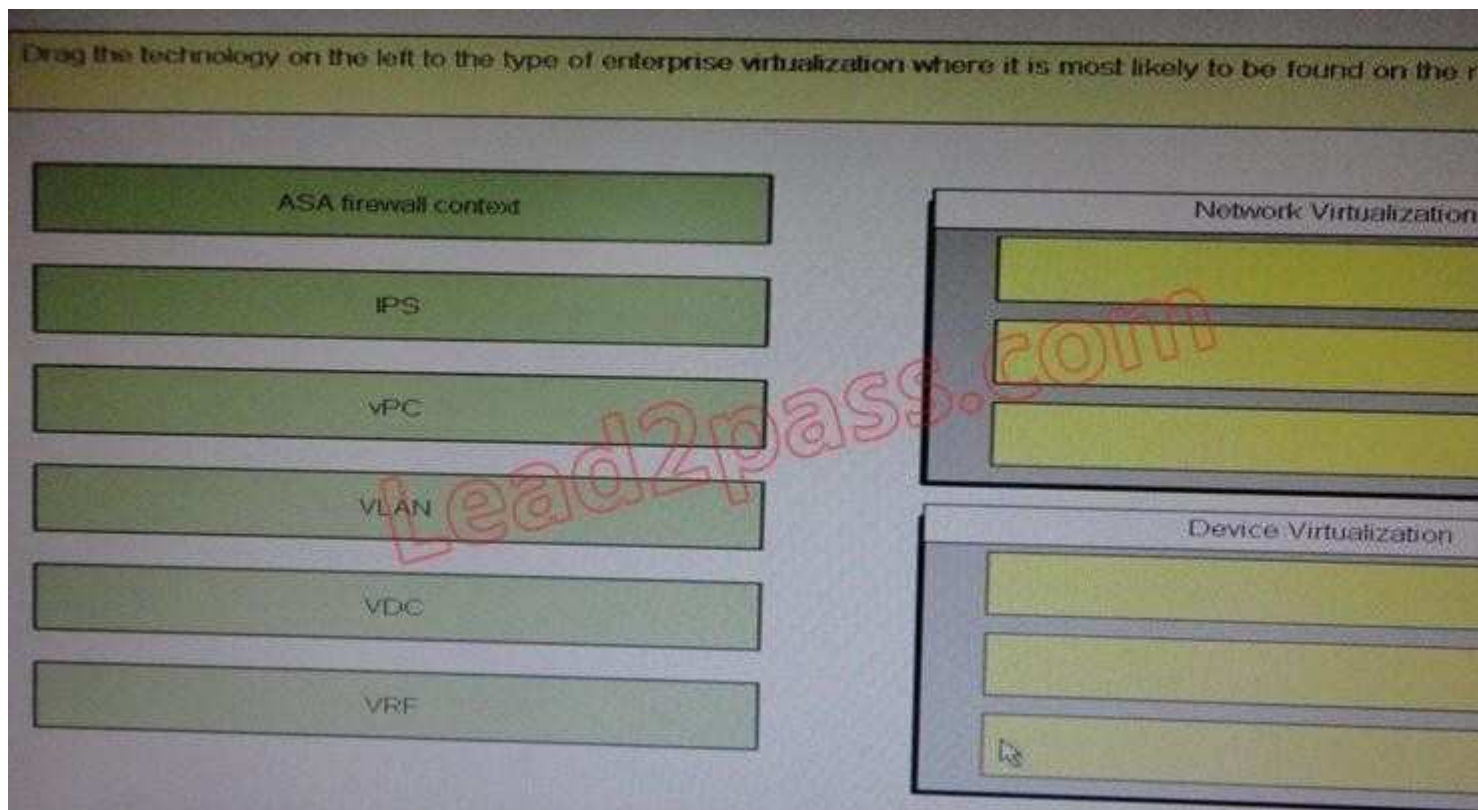
Explanation

Explanation/Reference:

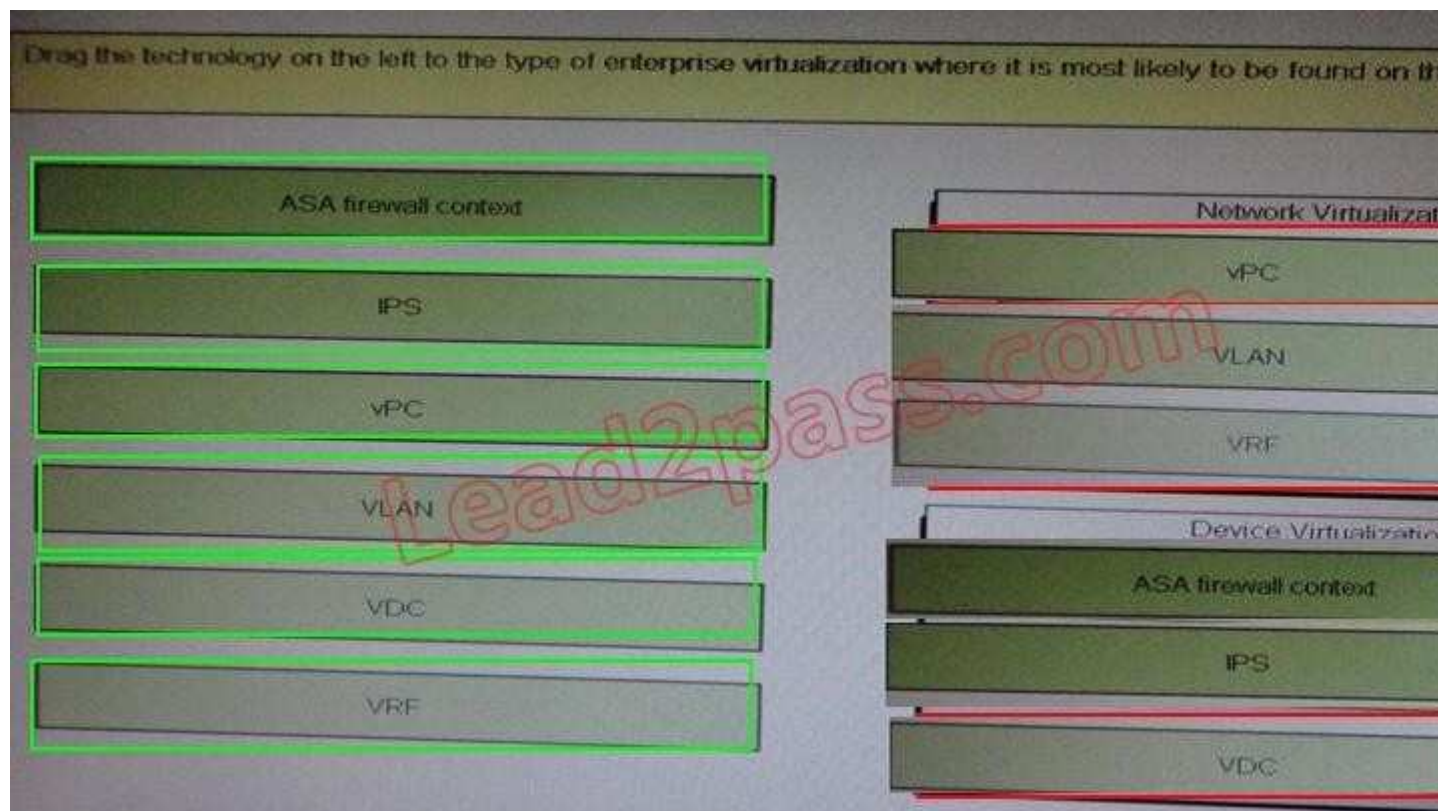
QUESTION 36

DRAG DROP

"First Test, First Pass" - www.lead2pass.com 17
Cisco 640-864 Exam



A. Answer:



Correct Answer:

Section: (none)

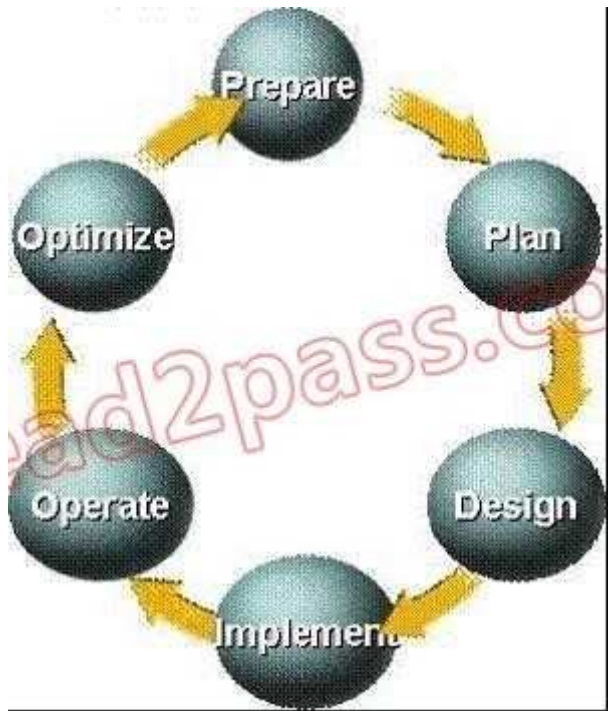
Explanation

Explanation/Reference:

QUESTION 37

Refer to the exhibit.

"First Test, First Pass" - www.lead2pass.com 18
Cisco 640-864 Exam



During which stage of the PPDIOO process are implementation procedures prepared?

- A. Prepare
- B. Plan
- C. Design
- D. Implement
- E. Operate
- F. Optimize

Correct Answer: C

Section: (none)

Explanation

Explanation/Reference:

QUESTION 38

Which statement describes the recommended deployments of IPv4 addressing in the Cisco Network Architecture for the Enterprise?

- A. private addressing throughout with public addressing in the Internet Connectivity module
- B. private addressing throughout with public addressing in the Internet Connectivity and E- Commerce modules
- C. private addressing throughout with public addressing in the Internet Connectivity, E-Commerce, and Remote Access and VPN modules
- D. private addressing throughout with public addressing in the Internet Connectivity, E-Commerce, and Enterprise Branch modules

Correct Answer: C

Section: (none)

Explanation

Explanation/Reference:

QUESTION 39

For which network scenario is static routing most appropriate?

"First Test, First Pass" - www.lead2pass.com 19
Cisco 640-864 Exam

- A. parallel WAN links
- B. IPSec VPN
- C. expanding networks
- D. hierarchical routing

Correct Answer: B

Section: (none)

Explanation

Explanation/Reference:

QUESTION 40

When considering the three VoIP design models single site, centralized multisite, and distributed multisite which question below would help to eliminate one of these questions?

- A. Will the switches be required to provide inline power?
- B. Will users need to make off site calls, beyond the enterprise?
- C. Will users require applications such as voice mail and interactive voice response?
- D. Are there users whose only enterprise access is via a QoS-enabled WAN?

Correct Answer: D

Section: (none)

Explanation

Explanation/Reference:

QUESTION 41

Which aspect would most likely be found in the draft design document?

- A. a list of QoS requirements
- B. a note that there are no segments with more than 70 percent broadcast or multicast traffic
- C. the level of redundancy or high availability that currently exists or is required in the network
- D. the list of network infrastructure services which are in use, such as voice and video

Correct Answer: A

Section: (none)

Explanation

Explanation/Reference:

QUESTION 42

Your company's Cisco routers are operating with EIGRP. You need to join networks with an acquisition's heterogeneous routers at 3 sites, operating with EIGRP and OSPF. Which describes the best practice for routing protocol deployment?

- A. apply OSPF throughout both networks
- B. apply one-way redistribution exclusively at each location
- C. apply two way redistribution exclusively at each location
- D. apply two-way redistribution at each location with a route filter at only one location
- E. apply two-way redistribution at each location with a route filter at each location
- F. apply EIGRP with the same autonomous system throughout both networks

Correct Answer: E

Section: (none)

Explanation

Explanation/Reference:

QUESTION 43

When considering the enterprise campus design, which network application category most influences the network design?

- A. peer-to-peer
- B. client-local server
- C. client-enterprise edge server
"First Test, First Pass" - www.lead2pass.com 20
Cisco 640-864 Exam
- D. client-server farm

Correct Answer: D

Section: (none)

Explanation

Explanation/Reference:

QUESTION 44

Which two link state routing protocols support IPv6 routing? (Choose two)

- A. BGP4+
- B. OSPF
- C. RIPng
- D. EIGRP
- E. IS-IS

Correct Answer: BE

Section: (none)

Explanation

Explanation/Reference:

QUESTION 45

When designing the wireless portion of an enterprise campus network, which one of these statements should serve as a strict guideline?

- A. Wireless controllers should be distributed throughout the building distribution layers
- B. Dynamic controller redundancy, where the access points attempt to join the least loaded controller, is a best-practice approach.
- C. Wireless controllers should be centralized in the core layer
- D. To improve the RF coverage, the controllers of any building should be put in the same mobility group.

Correct Answer: C

Section: (none)

Explanation

Explanation/Reference:

QUESTION 46

When designing using the Cisco Enterprise Architecture, in which Enterprise Campus layer does the remote Access and VPN module establish its connection?

- A. Building Access
- B. Campus Core
- C. Enterprise Branch
- D. Enterprise Data Center

Correct Answer: B

Section: (none)

Explanation

Explanation/Reference:

QUESTION 47

Which one of these statements is an example of how trust and identity management solutions should be deployed in the enterprise campus network?

- A. Authentication validation should be deployed as close to the data center as possible.
- B. Use the principle of top-down privilege, which means that each subject should have the privileges that are

necessary to perform their defined tasks, as well as all the tasks for those roles below them.

- C. Mixed ACL rules, using combinations of specific sources and destinations, should be applied as close to the source as possible.
- D. For ease of management, practice defense in isolation security mechanisms should be in place one time, in one place.

"First Test, First Pass" - www.lead2pass.com 21
Cisco 640-864 Exam

Correct Answer: C

Section: (none)

Explanation

Explanation/Reference:

QUESTION 48

Which of these is the equation used to derive a 64 Kbps bit rate?

- A. $2 \times 8 \text{ kHz} \times 4\text{-bit code words}$
- B. $8 \text{ kHz} \times 8\text{-bit code words}$
- C. $2 \times 4\text{-bit code words} \times 8 \text{ kHz}$
- D. $2 \times 4 \text{ kHz} \times 8\text{-bit code words}$

Correct Answer: D

Section: (none)

Explanation

Explanation/Reference:

QUESTION 49

Which one of these statements best describes the challenge of the designer when dealing with IP routing?

- A. OSPF supports fast convergence does not require periodic routing table updates, so the optional network design is best simplified with the network as a single backbone area.
- B. Manual summarization is limited to ABRs and ASBRs, therefore the designer must pay strict attention to the EIGRP topology.
- C. EIGRP, as a proprietary protocol, has special challenges when dealing with networks deployed with IPv6.
- D. Effective scalability with OSPF requires the designer to pay strict attention to the hierarchical network structure, localizing topology changes.

Correct Answer: D

Section: (none)

Explanation

Explanation/Reference:

QUESTION 50

When designing the identity and access control portions for the enterprise campus network, which of these solutions would be the most appropriate solution to consider?

- A. 802.1x

- B. ACLs in the core layer
- C. Cisco Security MARS
- D. NetFlow

Correct Answer: A

Section: (none)

Explanation

Explanation/Reference:

QUESTION 51

Which three terms describe the primary functions of the distribution layer of the campus network design hierarchy? (Chose three)

- A. provides end-user connectivity
 - B. provides high speed transport
 - C. provides QoS services
 - D. enforces security policies
 - E. provides WAN connection
 - F. connects access devices to the core backbone
- "First Test, First Pass" - www.lead2pass.com 22
Cisco 640-864 Exam

Correct Answer: CDE

Section: (none)

Explanation

Explanation/Reference:

QUESTION 52

DataQuirk is a web-based medical transcription company for exotic-animal veterinarians. The company recently added a third ISP for international business. They are organizing the enterprise network into a fully operational Enterprise Edge.

To which two modules will the three ISPs be directly related? (Choose two.)

- A. PSTN
- B. E-commerce
- C. WAN/MAN
- D. Edge Distribution
- E. internet Connectivity
- F. Remote Access VPN

Correct Answer: BE

Section: (none)

Explanation

Explanation/Reference:

QUESTION 53

DRAG DROP

Drag the network function on the left to the functional area or module where it is most likely to be performed in the enterprise campus infrastructure on the right.

aggregates connectivity to voice, video, and data outside the enterprise with QoS and security	Enterprise Campus
provides internal users with external HTTP, FTP, SMTP, and DNS connectivity	Enterprise Edge
enables service-oriented architectures, virtualization, and secure computing with load balancing, redundancy	E-Commerce
enables intelligent route and switch, high availability resilient multilayer design and integrated security	Internet Connectivity
supports application traffic through the Internet, initiated outside the enterprise network	Remote Access and VPN
terminates traffic that is forwarded by the Internet connectivity module	Data Center

A. Answer:

"First Test, First Pass" - www.lead2pass.com 23
Cisco 640-864 Exam

Drag the network function on the left to the functional area or module where it is most likely to be performed in the enterprise campus infrastructure on the right.

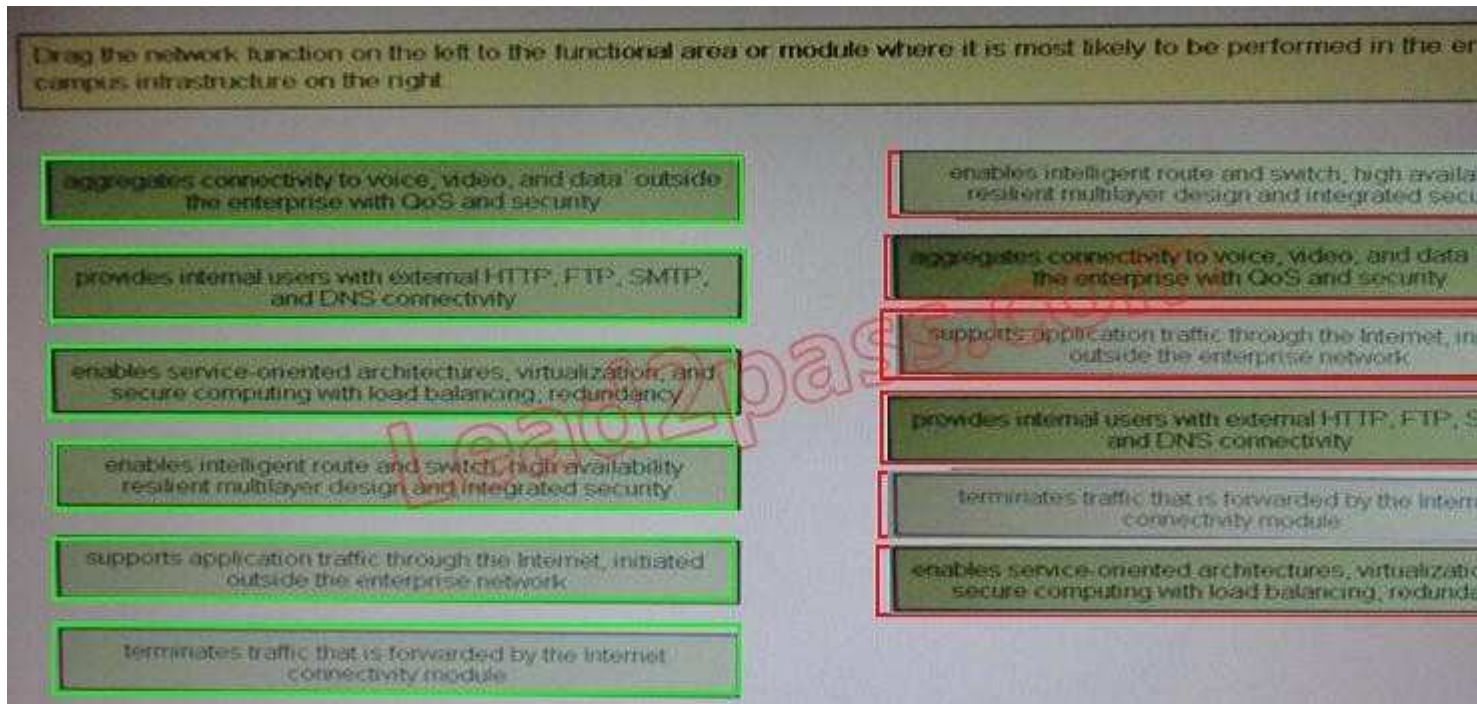
aggregates connectivity to voice, video, and data outside the enterprise with QoS and security	enables intelligent route and switch, high availability resilient multilayer design and integrated security
provides internal users with external HTTP, FTP, SMTP, and DNS connectivity	aggregates connectivity to voice, video, and data outside the enterprise with QoS and security
enables service-oriented architectures, virtualization, and secure computing with load balancing, redundancy	supports application traffic through the Internet, initiated outside the enterprise network
enables intelligent route and switch, high availability resilient multilayer design and integrated security	provides internal users with external HTTP, FTP, and DNS connectivity
supports application traffic through the Internet, initiated outside the enterprise network	terminates traffic that is forwarded by the Internet connectivity module
terminates traffic that is forwarded by the Internet connectivity module	enables service-oriented architectures, virtualization, and secure computing with load balancing, redundancy

Correct Answer:
Section: (none)

Explanation

Explanation/Reference:

"First Test, First Pass" - www.lead2pass.com 23
Cisco 640-864 Exam



QUESTION 54

Which codec does Cisco recommend for WAN link?

- A. G.711
- B. G.723
- C. G.728
- D. G.729

Correct Answer: D

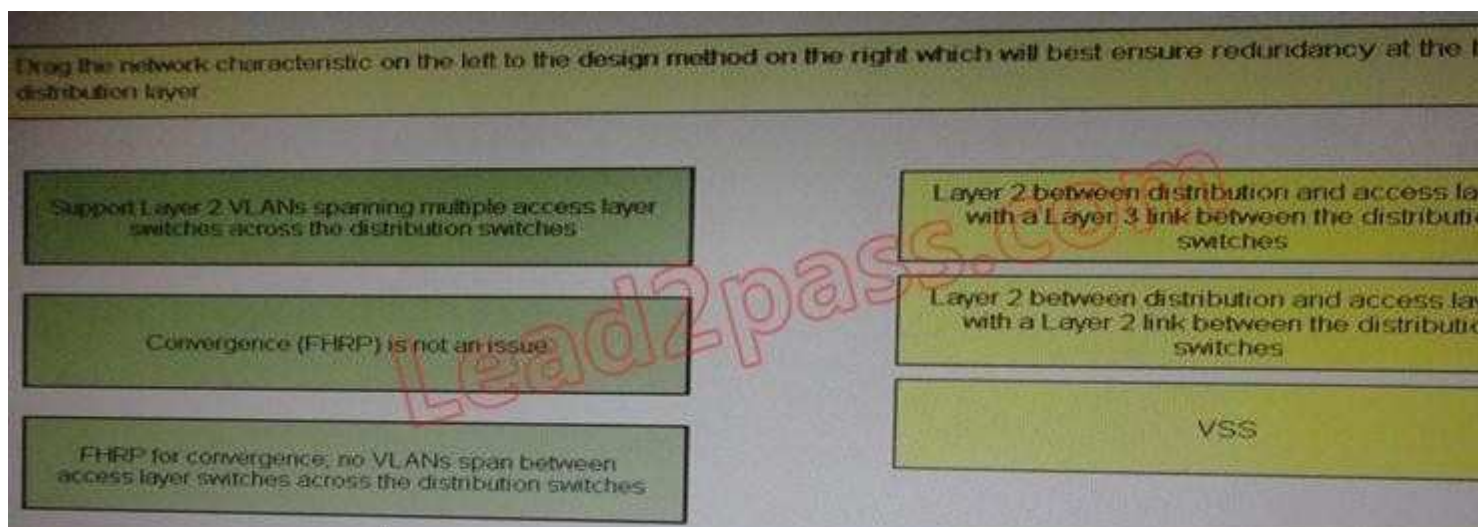
Section: (none)

Explanation

Explanation/Reference:

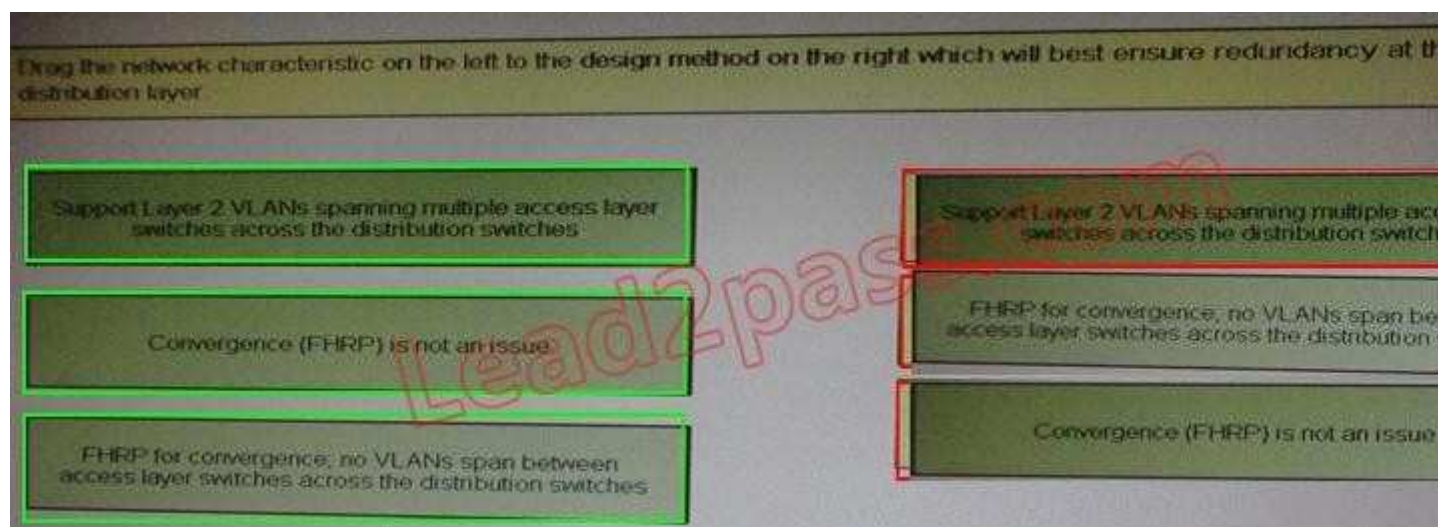
QUESTION 55

DRAG DROP



A. Answer:

"First Test, First Pass" - www.lead2pass.com 24
Cisco 640-864 Exam



Correct Answer:

Section: (none)

Explanation

Explanation/Reference:

"First Test, First Pass" - www.lead2pass.com 24
Cisco 640-864 Exam

Drag the network characteristic on the left to the design method on the right which will best ensure redundancy at the distribution layer

Support Layer 2 VLANs spanning multiple access layer switches across the distribution switches

Convergence (FHRP) is not an issue

FHRP for convergence, no VLANs span between access layer switches across the distribution switches

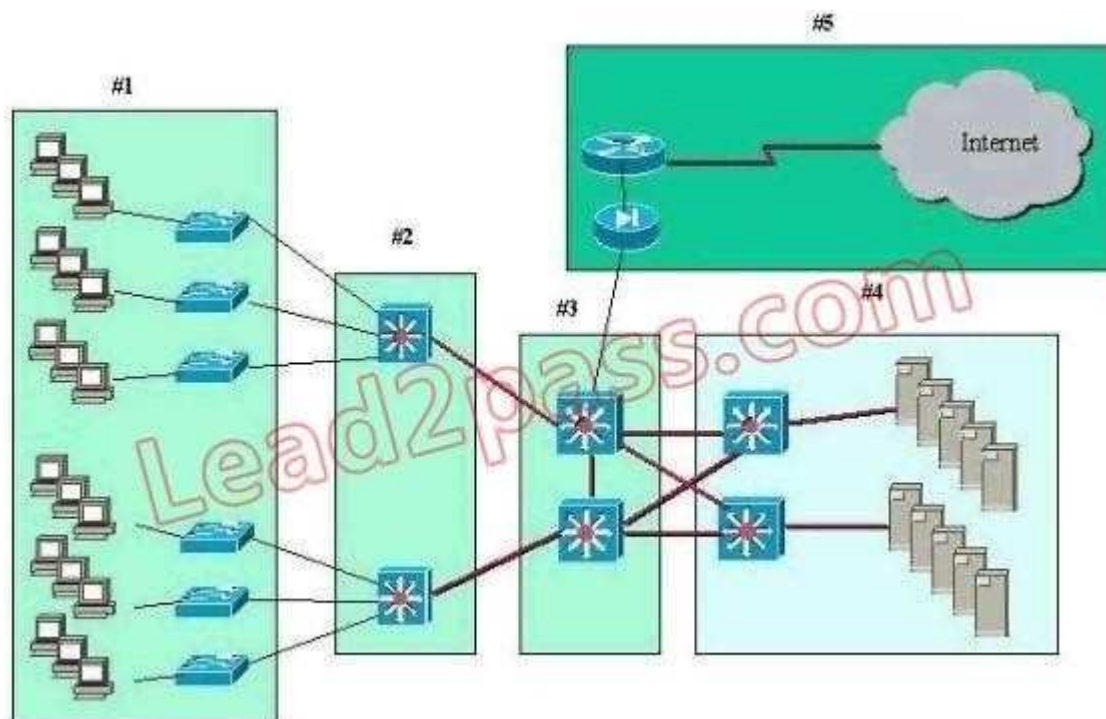
Support Layer 2 VLANs spanning multiple access layer switches across the distribution switches

FHRP for convergence, no VLANs span between access layer switches across the distribution switches

Convergence (FHRP) is not an issue

QUESTION 56

Refer to the exhibit.



A standard, Layer 2 campus network design is pictured. Which numbered box represents the distribution layer?

- A. #1
- B. #3
- C. #4
- D. #2

Correct Answer: D

Section: (none)

Explanation

Explanation/Reference:

QUESTION 57

Which codec does Cisco recommend for WAN links?

"First Test, First Pass" - www.lead2pass.com 25
Cisco 640-864 Exam

- A. G.711
- B. G.723
- C. G.728
- D. G.729

Correct Answer: D

Section: (none)

Explanation

Explanation/Reference:

QUESTION 58

When considering the three VoIP design models: single site, centralized multisite, and distributed multisite, which question below would help to eliminate one of the options?

- A. Will the switches be required to provide inline power?
- B. Will users need to make offsite calls, beyond the enterprise?
- C. Will users require applications such as voice mail and interactive voice response?
- D. Are there users whose only enterprise access is via a QoS-enabled WAN?

Correct Answer: D

Section: (none)

Explanation

Explanation/Reference:

QUESTION 59

The enterprise campus core layer has requirements that are unique from the distribution and access layers. Which of the following is true about the core layer?

- A. The core layer provides convergence using Layer 2 and Layer 3 services and features.
- B. The core layer provides high availability to support the distribution layer connections to the enterprise edge.
- C. The campus core layer is optional.
- D. The core layer requires high performance to manage the traffic policing across the backbone.

Correct Answer: C

Section: (none)

Explanation

Explanation/Reference:

QUESTION 60

Refer to the exhibit.

Exhibit Missing

Which statement is true concerning enterprise edge distribution switches?

- A. The speed of switching is the most critical feature.
- B. Security requirements are offloaded to the other modules for performance reasons.
- C. Edge distribution switches are only required when using a collapsed core backbone.
- D. Enterprise edge distribution switches are similar to the building distribution layer.

Correct Answer: D

Section: (none)

Explanation

Explanation/Reference:

QUESTION 61

Which one of these statements is true concerning the data center distribution (aggregation) layer design?

"First Test, First Pass" - www.lead2pass.com 26
Cisco 640-864 Exam

- A. With Layer 3 at the aggregation layer, the physical loops in the topology must still be managed by STP.
- B. The boundary between Layer 2 and Layer 3 must reside in the multilayer switches, independent of any other devices such as firewalls or content switching devices.
- C. A mix of both Layer 2 and Layer 3 access is sometimes the most optimal.
- D. In a small data center, the aggregation layer can connect directly to the campus core, exchanging IP routes and MAC address tables.

Correct Answer: C

Section: (none)

Explanation

Explanation/Reference:

QUESTION 62

When designing the threat detection and mitigation portion for the enterprise data center network, which of the following would be the most appropriate solution to consider?

- A. 802.1X
- B. ACLs in the core layer
- C. Cisco Security MARS
- D. Cisco Firewall Services Module

Correct Answer: C

Section: (none)

Explanation

Explanation/Reference:

QUESTION 63

A Cisco Self-Defending Network has been installed, but DoS attacks are still being directed at e-commerce hosts. The connection rate at the Internet firewall was limited, but the problem persists. What more can be done?

- A. Move the servers to the DMZ.
- B. Install all relevant operating system patches.
- C. Block the servers' TCP traffic at the Internet firewall.
- D. Block the servers' UDP traffic at the Internet firewall.

Correct Answer: B

Section: (none)

Explanation

Explanation/Reference:

QUESTION 64

RST Corporation is planning to upgrade its current network. The chief technology officer has supplied a topology diagram and an IP addressing scheme of the current network during an interview.

RST has been growing at about twenty percent per year. It has been difficult to maintain customer support at a satisfactory level. Therefore, the RST board has met with and directed the chief technology officer to look into network improvements.

Which two items are most relevant in documenting RST's business requirements? (Choose two.)

- A. existing network topologies
 - B. network performance requirements
 - C. the IP addresses assigned by the ISP
 - D. improved customer support requirements
 - E. projected growth estimates
- "First Test, First Pass" - www.lead2pass.com 27
Cisco 640-864 Exam

Correct Answer: DE

Section: (none)

Explanation

Explanation/Reference:

QUESTION 65

Which two of these best describe the implementation of a WAN Backup design over the Internet? (Choose two.)

- A. a best-effort method
- B. bandwidth guaranteed based on interface configuration
- C. designed as an alternative to a failed WAN connection
- D. implemented with a point-to-point logical link using a Layer 2 tunnel

E. requires no ISP coordination or involvement

Correct Answer: AC

Section: (none)

Explanation

Explanation/Reference:

QUESTION 66

Which two design criteria require VLANs in a proposed solution? (Choose two.)

- A. the segmenting of collision domains
- B. a limited corporate budget
- C. the use of multivendor equipment
- D. security between departments
- E. video streaming on the LAN
- F. the segmenting of broadcast domains

Correct Answer: DF

Section: (none)

Explanation

Explanation/Reference:

QUESTION 67

Which two methods are used to enhance VPN performance on Cisco ISRs? (Choose two.)

- A. SSL Acceleration Network Module
- B. VPN Shared Port Adapter
- C. VPN Acceleration Module
- D. high-performance VPN encryption AIM
- E. VPN Service Adapter
- F. built-in hardware-based encryption acceleration

Correct Answer: DF

Section: (none)

Explanation

Explanation/Reference:

QUESTION 68

Which three factors best justify WAN link redundancy between geographically dispersed sites? (Choose three.)

- A. high expense of transmitting data
- B. important traffic flows
- C. excessive packet transmission rate
- D. uncertain reliability
- E. high link utilization

F. lack of speed
"First Test, First Pass" - www.lead2pass.com 28
Cisco 640-864 Exam

Correct Answer: BDF

Section: (none)

Explanation

Explanation/Reference:

QUESTION 69

Which three pieces of information should be documented for each step of each phase in a design implementation plan? (Choose three.)

- A. easy guidelines in case of failure
- B. estimated rollback time in case of failure
- C. simple implementation guidelines
- D. estimated implementation time
- E. design document references
- F. step description

Correct Answer: DEF

Section: (none)

Explanation

Explanation/Reference:

QUESTION 70

The topology map in the draft design document should cover which two layers of the OSI model? (Choose two.)

- A. session
- B. data link
- C. transport
- D. application
- E. physical
- F. network

Correct Answer: EF

Section: (none)

Explanation

Explanation/Reference:

QUESTION 71

In a Cisco CatOS switch, what is the recommended practice when configuring switch-to-switch intercommunications to carry multiple VLANs for Dynamic Trunk Protocol?

- A. auto to auto_negotiate
- B. disable Dynamic Trunk Protocol when operating in the distribution layer

- C. auto to auto_no_negotiate
- D. desirable to desirable_no_negotiate
- E. on to on_negotiate
- F. desirable to desirable_negotiate

Correct Answer: E

Section: (none)

Explanation

Explanation/Reference:

QUESTION 72

What are the two most likely driving forces motivating businesses to integrate voice and data into converged networks? (Choose two.)

- A. Voice networks cannot carry data unless the PRI circuits aggregate the BRI circuits.
- B. Their PSTNs cannot deploy features quickly enough.
- C. Data, voice, and video cannot converge on their current PSTN structures.
"First Test, First Pass" - www.lead2pass.com 29
Cisco 640-864 Exam
- D. Voice has become the primary traffic on networks.
- E. WAN costs can be reduced by migrating to converged networks.

Correct Answer: CE

Section: (none)

Explanation

Explanation/Reference:

QUESTION 73

A lightweight access point is added to a working network. Which sequence will it use to associate itself with a wireless LAN controller?

- A. primary, secondary, tertiary, greatest AP capacity, master
- B. primary, secondary, tertiary, master, greatest AP capacity
- C. master, primary, secondary, tertiary, greatest AP capacity
- D. greatest AP capacity, primary, secondary, tertiary, master

Correct Answer: B

Section: (none)

Explanation

Explanation/Reference:

QUESTION 74

Which three mechanisms are required to deploy QoS on an IP WAN? (Choose three.)

- A. queuing and scheduling
- B. Call Admission Control

- C. traffic shaping
- D. link efficiency techniques
- E. traffic classification
- F. bandwidth provisioning

Correct Answer: CDE

Section: (none)

Explanation

Explanation/Reference:

QUESTION 75

Which two statements best describe the implementation of Overlay VPN connectivity for remote access in the Enterprise Edge WAN module? (Choose two.)

- A. Bandwidth is provisioned on a site-to-site basis.
- B. It uses dedicated point-to-point links.
- C. Optimum routing between customer sites requires a full mesh of virtual circuits.
- D. It must use Layer 2 labels to forward packets
- E. The ISP actively participates in customer routing.

Correct Answer: AC

Section: (none)

Explanation

Explanation/Reference:

QUESTION 76

DRAG DROP

"First Test, First Pass" - www.lead2pass.com 30
Cisco 640-864 Exam

Click and drag the QoS feature type on the left to the category of QoS mechanism on the right

WRED
CAR
ACLs
LFI
LLQ

classification
congestion
traffic
congestion
li

A. Answer:

Click and drag the QoS feature type on the left to the category of QoS mechanism on the right

WRED
CAR
ACLs
LFI
LLQ

Correct Answer:

Section: (none)

Explanation

Explanation/Reference:

QUESTION 77

A manufacturing company has decided to add a website to enhance sales. The web servers in the E-Commerce module must be accessible without compromising network security. Which two design recommendations can be made to meet these requirements? (Choose two.)

- A. Move the E-Commerce servers to the WAN module.
- B. Use intrusion detection on the E-Commerce server farm.
- C. Limit the number of incoming connections to the E-Commerce module.
- D. Use private and public key encryption.
- E. Place E-Commerce servers and application servers on isolated LANs (DMZs).

Correct Answer: BE

Section: (none)

Explanation

Explanation/Reference:

QUESTION 78

After a period of rapid growth, FloCzar Boats is seeking better network management tools. Managers have developed this needs list:

Move from static to dynamic device information.
Gain information to assist in long-term trend analysis.
Concentrate on Layer 4 monitoring.

Which management protocol will most help FloCzar achieve its goals?

- A. RMON2
- B. SNMP
"First Test, First Pass" - www.lead2pass.com 31
Cisco 640-864 Exam
- C. NetFlow
- D. RMON
- E. Cisco Discovery Protocol

Correct Answer: A

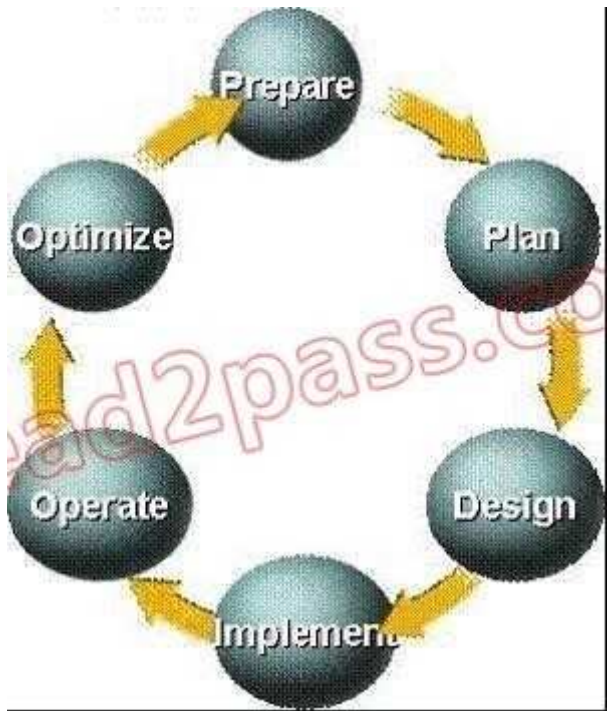
Section: (none)

Explanation

Explanation/Reference:

QUESTION 79

At which stage in the PPDIOO process would you analyze a customer's network in order to discover opportunities for network improvement?



- A. Operate
- B. Implement
- C. Plan
- D. Design
- E. Prepare
- F. Design Assessment

Correct Answer: D

Section: (none)

Explanation

Explanation/Reference:

QUESTION 80

A very large organization has received its IPv6 address range from its Internet Service Provider and intends to use only IPv6 addresses internally. Employees will access the Internet using port address translation. What is a requirement for their DNS servers?

- A. There are no changes required to their DNS servers.
- B. Their DNS servers need to support only IPv6 addresses.
- C. Their DNS servers need to support only IPv4 addresses.
- D. They need additional DNS servers in their network just for IPv6 addresses.
- E. They no longer need DNS servers.
- F. Their DNS servers need to support both IPv4 and IPv6 addresses.

Correct Answer: F

Section: (none)

Explanation

Explanation/Reference:

QUESTION 81

Which two statements represent advantages that the top-down network design process has over the bottom-up network design process? (Choose two.)

- A. utilizes previous experience
- B. identifies appropriate technologies first
- C. is able to provide the big picture
- D. takes less time to design a network
- E. provides a design for current and future development

Correct Answer: CE

Section: (none)

Explanation

Explanation/Reference:

QUESTION 82

Which two statements about IPv6 addresses are true? (Choose two.)

- A. Two colons (::) are used to represent successive hexadecimal fields of zeros.
- B. Leading zeros are required.
- C. Two colons (::) are used to separate fields.
- D. A single interface will have multiple IPv6 addresses of different types.

Correct Answer: AD

Section: (none)

Explanation

Explanation/Reference:

QUESTION 83

Which three security measures can be used to mitigate DoS attacks that are directed at exposed hosts within the E-Commerce module? (Choose three.)

- A. Use NIDSs and HIPSs to detect signs of attack and to identify potentially successful breaches.
- B. Partition the exposed hosts into a separate LAN or VLAN.
- C. Use LAN switch VTP pruning to separate hosts on the same segment.
- D. Use a VPN concentrator (IPSec) to protect and verify each connection to the exposed host or hosts.
- E. Use firewalls to block all unnecessary connections to the exposed hosts.

Correct Answer: ABE

Section: (none)

Explanation

Explanation/Reference:

QUESTION 84

Which technology can ensure data confidentiality, data integrity, and authentication across a public IP network?

- A. VSANs
- B. VPDNs
- C. VLANs
- D. GRE
- E. IPsec

"First Test, First Pass" - www.lead2pass.com 33
Cisco 640-864 Exam

Correct Answer: E

Section: (none)

Explanation

Explanation/Reference:

QUESTION 85

Which statement best describes Call Admission Control?

- A. It extends QoS capabilities to protect voice from excessive data traffic.
- B. It protects voice from voice.
- C. It provides endpoint registration control.
- D. It provides endpoint bandwidth control.

Correct Answer: B

Section: (none)

Explanation

Explanation/Reference:

QUESTION 86

A customer wishes to implement VoIP using centralized call-processing. In addition, the customer wishes to ice quality and good bandwidth utilization. Which codec would you suggest?

- A. G.711
- B. G.729
- C. G.726
- D. G.723.1

Correct Answer: B

Section: (none)

Explanation

Explanation/Reference:

QUESTION 87

DRAG DROP

Click and drag the Cisco Self-Defending Network term on the left to the SDN description on the right.

Threat Defense

provides secure n
controls infected

Secure Remote Access

uses encryption a
secure transport

Cisco Self-Defending Network

uses security integra
appliances to

Secure Connectivity

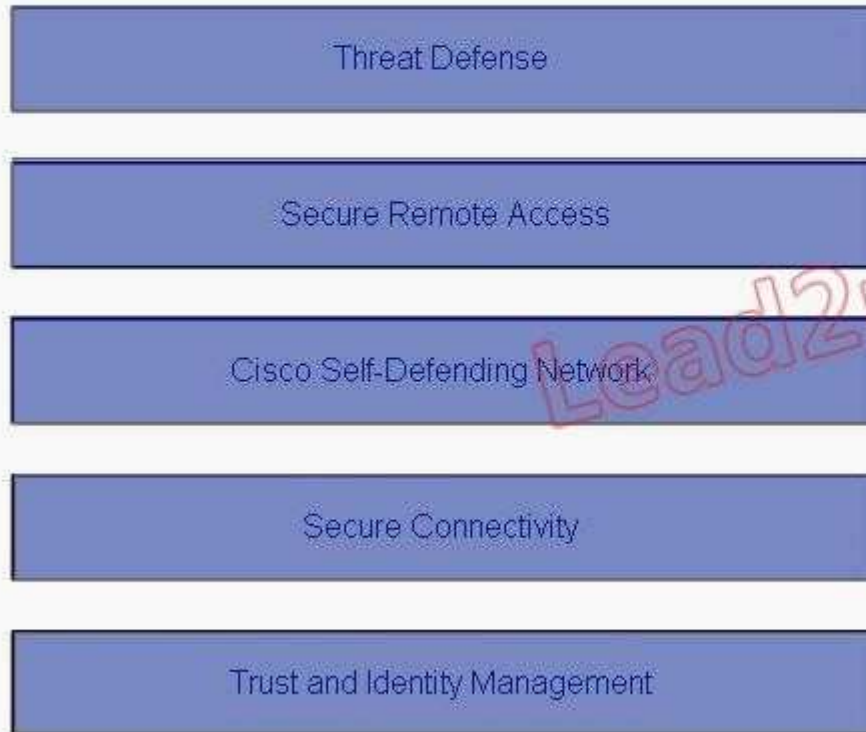
integrates security
prevent, a

Trust and Identity Management

A. Answer:

"First Test, First Pass" - www.lead2pass.com 34
Cisco 640-864 Exam

Click and drag the Cisco Self-Defending Network term on the left to the SDN description used.



Correct Answer:

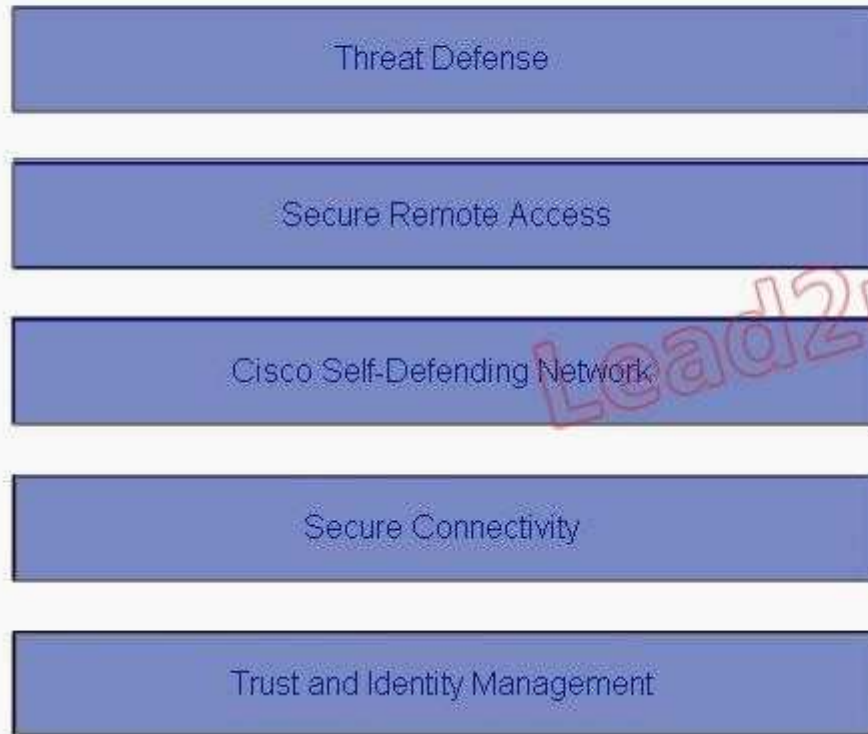
Section: (none)

Explanation

Explanation/Reference:

"First Test, First Pass" - www.lead2pass.com 34
Cisco 640-864 Exam

Click and drag the Cisco Self-Defending Network term on the left to the SDN description on the right.



QUESTION 88

Which three sources does a network designer use to collect information for characterizing an existing network? (Choose three.)

- A. server statistics
- B. network audit
- C. traffic analysis
- D. visual inventory
- E. staff input

Correct Answer: BCE

Section: (none)

Explanation

Explanation/Reference:

QUESTION 89

Which of the following Cisco router services performs network traffic analysis to assist in documenting a customer's existing network?

- A. NetMon

- B. MRTG
- C. SNMP MIB compiler
- D. NetFlow

Correct Answer: D

Section: (none)

Explanation

Explanation/Reference:

QUESTION 90

Which statement identifies a benefit obtained when using a top-down network design plan?

- A. provides a more detailed picture of the desired network
 - B. facilitates design based on previous experience
 - C. is less time-consuming than using a bottom-up approach
 - D. allows quick responses to design requests
 - E. incorporates customer organizational requirements
- "First Test, First Pass" - www.lead2pass.com 35
Cisco 640-864 Exam

Correct Answer: E

Section: (none)

Explanation

Explanation/Reference:

QUESTION 91

Lightweight access points are being deployed in remote locations where others are already operational. The new access points are in a separate IP subnet from the wireless controller. OTAP has not been enabled at any locations. Which two methods can the AP use to locate a wireless controller? (Choose two.)

- A. NV-RAM IP address
- B. master
- C. primary, secondary, tertiary
- D. DHCP
- E. local subnet broadcast
- F. DNS

Correct Answer: DF

Section: (none)

Explanation

Explanation/Reference:

QUESTION 92

Which Cisco security solution can quarantine and prevent non-compliant end stations from accessing the network until they achieve security policy compliance?

- A. Cisco Security Monitoring, Analysis, and Response System
- B. Adaptive Security Appliance
- C. Network Admission Control
- D. Network Intrusion Prevention System
- E. Cisco Secure Connectivity
- F. Access Control Server

Correct Answer: C

Section: (none)

Explanation

Explanation/Reference:

QUESTION 93

A network design includes private addressing, but there is also a need for two or three network devices to each be assigned a unique public address so they can be accessed from the Internet. Which technique will satisfy this requirement?

- A. Static NAT
- B. VPN tunneling
- C. Dynamic NAT
- D. DHCP

Correct Answer: A

Section: (none)

Explanation

Explanation/Reference:

QUESTION 94

A Cisco security mechanism has the following attributes:

it is a sensor appliance

it searches for potential attacks by capturing and analyzing traffic it is a "purpose-built device"

"FirstTest, FirstPass" - www.lead2pass.com 36

Cisco 640-864 Exam

it is installed passively

it introduces no delay or overhead

Which Cisco security mechanism is this?

- A. NIDS
- B. PIX
- C. IKE
- D. HIPS
- E. HMAC

Correct Answer: A

Section: (none)

Explanation

Explanation/Reference:

QUESTION 95

Which two routing protocols operate over NBMA point-to-multipoint networks without the use of point-to-point subinterfaces? (Choose two.)

- A. OSPF
- B. EIGRP
- C. RIPv2
- D. RIPv1
- E. IGRP
- F. IS-IS

Correct Answer: AB

Section: (none)

Explanation

Explanation/Reference:

QUESTION 96

Which three types of WAN topologies can be deployed in the Cisco Enterprise Architecture Enterprise Edge WAN module? (Choose three.)

- A. ring
- B. full mesh
- C. partial mesh
- D. collapsed core
- E. star
- F. core
- G. edge

Correct Answer: BCE

Section: (none)

Explanation

Explanation/Reference:

QUESTION 97

Which statement accurately describes one difference between a small office and medium office topology?

- A. Medium offices commonly use integrated route and switching platforms.
 - B. Medium offices use integrated 10/100/1000 interfaces as Layer 2 trunks.
 - C. Medium offices use external access switches to support LAN connectivity.
 - D. Small offices commonly use Rapid PVST+ for Layer 3 deployments.
- "First Test, First Pass" - www.lead2pass.com 37
Cisco 640-864 Exam

Correct Answer: C

Section: (none)

Explanation

Explanation/Reference:

QUESTION 98

A customer has the following Enterprise Campus design requirements:

at least 10 Gbps of bandwidth

network runs of up to 40km

no concern for transmission medium cost

Which transmission medium should you recommend to this customer?

- A. unshielded twisted pair
- B. shielded twisted pair
- C. single-mode fiber
- D. wireless
- E. multimode fiber

Correct Answer: C

Section: (none)

Explanation

Explanation/Reference:

QUESTION 99

You design a network with the following network addresses:

192.168.168.0

192.168.169.0

192.168.170.0

192.168.171.0

192.168.172.0

192.168.173.0

192.168.174.0

192.168.175.0

Which route address is the best summary of these network addresses?

- A. 192.168.0.0/16
- B. 192.168.168.0/21
- C. 192.168.0.0/24
- D. 192.168.171.128/3
- E. 192.168.175.0/3
- F. None of the above

Correct Answer: B

Section: (none)

Explanation

Explanation/Reference:

QUESTION 100

Which two of the following statements represent a preferred wireless LWAPP implementation? (Choose two.)

- A. verify open ports for:
Layer 2 LWAPP on ethertype 0xB BBBB
Layer 3 LWAPP on UDP 12222 and UDP 12223
- B. use of Layer 3 LWAPP is preferred over Layer 2 LWAPP
- C. use of Layer 2 LWAPP is preferred over Layer 3 LWAPP
"First Test, First Pass" - www.lead2pass.com 38
Cisco 640-864 Exam
- D. verify open ports for:
Layer 2 LWAPP on ethertype 0xBABA
Layer 3 LWAPP on UDP 12222 and TCP 12223
- E. verify open ports for:
Layer 2 LWAPP on ethertype 0xABAB
Layer 3 LWAPP on TCP 12222 and TCP 12223

Correct Answer: AB

Section: (none)

Explanation

Explanation/Reference:

QUESTION 101

Which two capabilities of NetFlow accounting assist designers with network planning? (Choose two.)

- A. the monitoring of processor time on network devices
- B. the calculation of packet and byte counts of network traffic
- C. the decoding and analyzing of packets
- D. the presentation of a time-based view of application usage on the network
- E. the monitoring of user network utilization

Correct Answer: BE

Section: (none)

Explanation

Explanation/Reference:

QUESTION 102

What is the benefit of deploying a gatekeeper in an H.323 IP telephony network?

- A. provides spatial redundancy through the use of HSRP
- B. provides load balancing via GUP when alternate gatekeepers are deployed
- C. reduces configuration complexity by centralizing the dial plan
- D. increases redundancy by allowing each gateway to maintain a copy of the dial plan

Correct Answer: C

Section: (none)

Explanation

Explanation/Reference:

QUESTION 103

An organization needs a WAN Transport technology that meets these criteria:

has a low initial cost
provides low-to-medium BW
has medium-to-high latency and jitter

Which technology would you suggest?

- A. ISDN
- B. X.25
- C. analog modem
- D. DSL
- E. wireless

Correct Answer: D

Section: (none)

Explanation

Explanation/Reference:

QUESTION 104

"First Test, First Pass" - www.lead2pass.com 39
Cisco 640-864 Exam

Which Cisco security solution offers protection against "day zero" attacks?

- A. Cisco IOS IPS
- B. Cisco IOS Firewall
- C. Cisco Traffic Anomaly Detector
- D. Cisco Adaptive Security Appliance
- E. Cisco Security Agent

Correct Answer: E

Section: (none)

Explanation

Explanation/Reference:

QUESTION 105

Which type of trunk is required in order to connect a fax machine to a PBX?

- A. intra-office
- B. Foreign Exchange Office
- C. central office
- D. Foreign Exchange Station
- E. inter-office

Correct Answer: D

Section: (none)

Explanation

Explanation/Reference:

QUESTION 106

Which H.323 protocol controls call setup between endpoints?

- A. RTCP
- B. H.245
- C. H.225
- D. RAS

Correct Answer: C

Section: (none)

Explanation

Explanation/Reference:

QUESTION 107

Which two of these represent a best practice implementation of a Split MAC LWAPP deployment in a Cisco Unified Wireless Network? (Choose two.)

- A. Each wireless client authentication type maps to a unique SSID which in turn maps to a unique VLAN.
- B. 802.1Q trunking extends from the wired infrastructure to the access point for translation into SSID(s).
- C. 802.1Q trunking extends from the wired infrastructure to a wireless LAN controller for translation into SSID(s).
- D. Each wireless client authentication type maps to a shared SSID which in turn maps to a common shared VLAN.
- E. Each wireless client authentication type maps to a unique SSID which in turn maps to a common shared VLAN.
- F. 802.1Q trunking extends from the wired infrastructure to a wireless LAN controller. Then the 802.1Q packet is encapsulated in LWAPP and sent to the access point for transmission over the SSID(s).

Correct Answer: AC

Section: (none)

Explanation

Explanation/Reference:

"First Test, First Pass" - www.lead2pass.com 40

Cisco 640-864 Exam

QUESTION 108

Which two statements best describe intradomain route summarization? (Choose two.)

- A. EIGRP and OSPF must be manually configured to summarize at non-classful boundaries.
- B. EIGRP and OSPF automatically summarize at classful network boundaries.
- C. OSPF and RIP automatically summarize at classful network boundaries.
- D. EIGRP and RIP automatically summarize at classful network boundaries.

E. EIGRP and OSPF automatically summarize at non-classful boundaries.

Correct Answer: AD

Section: (none)

Explanation

Explanation/Reference:

QUESTION 109

Which two VoIP characteristics are affected most by codec choice? (Choose two.)

- A. voice quality
- B. voice packet header size
- C. bandwidth required for voice calls
- D. silent packet handling

Correct Answer: AC

Section: (none)

Explanation

Explanation/Reference:

QUESTION 110

A network design document is being prepared for a customer. Which three network design elements must be included? (Choose three.)

- A. proof of concept
- B. data sources
- C. design details
- D. organizational policies
- E. implementation plan

Correct Answer: ACE

Section: (none)

Explanation

Explanation/Reference:

QUESTION 111

Which of these accurately describes dial backup routing?

- A. it always uses distance vector routing protocols
- B. once the backup link is activated it will remain active even after the primary link is restored
- C. it always uses permanent static routes
- D. it is supplied by the service provider as a secondary PVC at no additional charge
- E. the router initiates the dial backup link when a failure is detected on the primary link

Correct Answer: E

Section: (none)

Explanation

Explanation/Reference:

QUESTION 112

Which statement correctly describes queuing in environments supporting teleworkers?

"First Test, First Pass" - www.lead2pass.com 41
Cisco 640-864 Exam

- A. Queuing occurs on the outbound interface.
- B. Hardware queues are configured for appropriate PQ, CQ, or WFQ.
- C. Priority queuing guarantees some level of service to all traffic.
- D. WFQ is the Cisco IOS default on all WAN links regardless of speed.
- E. CQ is for time-sensitive protocols.

Correct Answer: A

Section: (none)

Explanation

Explanation/Reference:

QUESTION 113

Which two techniques can reduce voice packet transfer delay across a link of less than 512 kbps? (Choose two.)

- A. deploy LFI
- B. increase link bandwidth
- C. extend the trust boundary
- D. deploy software compression
- E. increase queue depth

Correct Answer: AB

Section: (none)

Explanation

Explanation/Reference:

QUESTION 114

DRAG DROP

Match the Cisco security solution on the left to its function on the right.

Anomaly Guard and Detector

protects the endpoints

Cisco Security Agent

provides multiple functions for security

IPS Appliance

prevents attacks

ASA

provides Web security

SSL Service Module

prevents data leakage

A. Answer:

"First Test, First Pass" - www.lead2pass.com 42
Cisco 640-864 Exam

Match the Cisco security solution on the left to its function on the right.

Anomaly Guard and Detector

Cisco Security Agent

IPS Appliance

ASA

SSL Service Module

Correct Answer:

Section: (none)

Explanation

Explanation/Reference:

"First Test, First Pass" - www.lead2pass.com 42

Cisco 640-864 Exam

Match the Cisco security solution on the left to its function on the right.

Anomaly Guard and Detector

Cisco Security Agent

IPS Appliance

ASA

SSL Service Module

Cisco

Anomaly

SSL

QUESTION 115

Your company uses OSPF for internal routing. The company will be connected to VendorA via a single dedicated link and to VendorB via redundant dedicated links. Both vendors also use OSPF for internal routing. Which of the following deployments describes the best intra-domain routing practice in this situation?

- A. Redistribute the routes on each link between your company and the vendors to a shared EIGRP routing protocol.
- B. Use IBGP to reach VendorA and EBGP to reach VendorB.
- C. Use static routes to reach VendorA and EBGP to reach VendorB.
- D. Use static routes to reach both VendorA and VendorB.
- E. Connect your company to both VendorA and VendorB using existing OSPF.

Correct Answer: C

Section: (none)

Explanation

Explanation/Reference:

QUESTION 116

Which statement can a network designer use to describe route summarization to an IT manager?

- A. It is the grouping of ISP network addresses to minimize the number of routes to the Internet.
- B. It is the grouping of multiple discontinuous subnets to increase routing performance.
- C. It is the grouping of multiple contiguous networks and advertising as one large network.

D. It is the grouping of multiple contiguous subnets into one Class A, B, or C IP address to minimize routing table size.

Correct Answer: C

Section: (none)

Explanation

Explanation/Reference:

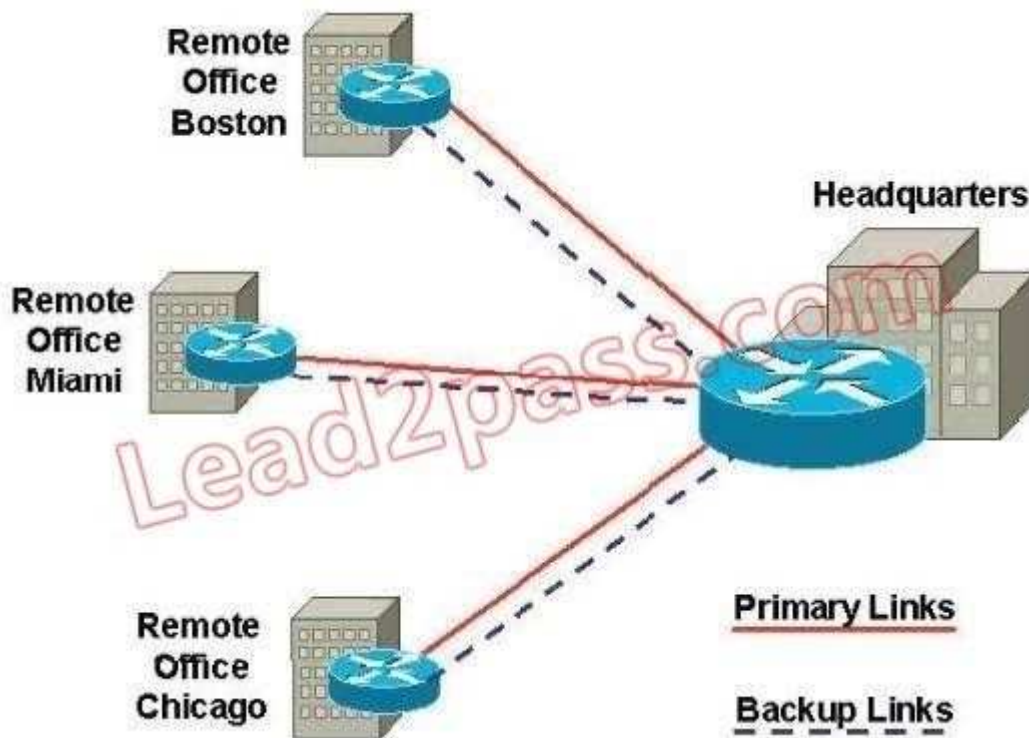
QUESTION 117

Refer to the exhibit. All primary links are T1s. The customer wants to have a backup to each remote office from the Headquarters office.

Which two types of backup links would be viable solutions? (Choose two.)

"First Test, First Pass" - www.lead2pass.com 43

Cisco 640-864 Exam



- A. dial backup routing
- B. shadow SVC
- C. permanent secondary WAN link
- D. VPDN

Correct Answer: AC

Section: (none)

Explanation

Explanation/Reference:

QUESTION 118

A Cisco SONA architecture layer is described as follows:

The layer's IT resources are interconnected across a converged network foundation.

The layer's IT resources include servers, storage, and clients. The layer represents how resources exist across the network.

The customer objective for the layer is to have anywhere/anytime connectivity. Which Cisco SONA architecture layer is being described?

- A. Application
- B. Integrated Transport
- C. Physical
- D. Networked Infrastructure
- E. Interactive Services

Correct Answer: D

Section: (none)

Explanation

Explanation/Reference:

QUESTION 119

"First Test, First Pass" - www.lead2pass.com 44
Cisco 640-864 Exam

Which information should a network summary report identify?

- A. actions needed to support the existing network
- B. customer requirements
- C. new network features
- D. customer requirement modifications
- E. actions needed to support existing network features
- F. infrastructure shortcomings

Correct Answer: F

Section: (none)

Explanation

Explanation/Reference:

QUESTION 120

Given a VoIP network with these attributes:

Codec: G.711
WAN bandwidth: 768Kbps
Packet Header: 6 bytes
Payload: 160 bytes
CRTP: No

How many calls can be made?

- A. 7 calls
- B. 13 calls
- C. 8 calls
- D. 9 calls
- E. 11 calls

Correct Answer: E

Section: (none)

Explanation

Explanation/Reference:

QUESTION 121

What are three valid methods of gathering information about an existing data network? (Choose three.)

- A. Use organizational input.
- B. Analyze the user-mapping of a running application.
- C. Perform a traffic analysis.
- D. Perform a packet-level audit to verify carrier service guarantees.
- E. Use reports that analyze the metrics of the customer's existing network.
- F. Perform a network audit to gather more detail about the network.

Correct Answer: CEF

Section: (none)

Explanation

Explanation/Reference:

QUESTION 122

Which two of these are required for wireless client mobility deployment when using a Cisco Unified Wireless Network? (Choose two.)

- A. matching RF power
- B. matching security
- C. assigned master controller
"First Test, First Pass" - www.lead2pass.com 45
Cisco 640-864 Exam
- D. matching mobility group name
- E. matching RF channel
- F. matching RF group name

Correct Answer: BD

Section: (none)

Explanation

Explanation/Reference:

QUESTION 123

In the Cisco branch office design, what categorizes an office as large?

- A. between 50 and 100 users and a single-tier design
- B. between 100 and 200 users and a three-tier design
- C. between 50 and 100 users and a three-tier design
- D. over 200 users and a two-tier design
- E. between 100 and 200 users and a two-tier design

Correct Answer: B

Section: (none)

Explanation

Explanation/Reference:

QUESTION 124

A company is designing a worldwide IPv6 network with duplicated file servers at multiple locations. Each file server contains identical reference information. Which IPv6 address type would be used to allow each end station to send a request to the nearest file server using the same destination address, regardless of the location of that end station?

- A. broadcast
- B. multicast
- C. anycast
- D. unicast

Correct Answer: C

Section: (none)

Explanation

Explanation/Reference:

QUESTION 125

When designing using the Cisco Enterprise Architecture, in which Enterprise Campus layer do the Enterprise Edge and Enterprise WAN modules establish their connection?

- A. Building Access
- B. Building Distribution
- C. Campus Core
- D. Enterprise Branch
- E. Enterprise Data Center

Correct Answer: B

Section: (none)

Explanation

Explanation/Reference:

QUESTION 126

Which three of these describe the best practice for Cisco wireless outdoor Mesh network deployment? (Choose three.)

- A. mesh hop counts of 4 or fewer
- B. RAP implemented with 20 or fewer MAP nodes
- C. client access via 802.11a and backhaul with 802.11b/g
"First Test, First Pass" - www.lead2pass.com 46
Cisco 640-864 Exam
- D. client access via 802.11b/g and backhaul with 802.11a
- E. mesh hop counts of 8 to 4
- F. RAP implemented with 20 to 32 MAP nodes

Correct Answer: ADF

Section: (none)

Explanation

Explanation/Reference:

QUESTION 127

The Cisco Data Center Network Architecture comprises which two Cisco SONA layers? (Choose two.)

- A. Collaboration Applications
- B. WAN/Internet
- C. Interactive Services
- D. Network Infrastructure
- E. Business Applications

Correct Answer: CD

Section: (none)

Explanation

Explanation/Reference:

QUESTION 128

Which two of these are scalability benefits of designing a network that utilizes VPNs?

(Choose two.)

- A. reduces dial infrastructure expenditures
- B. reduces the number of physical connections
- C. allows networks to be set up and restructured quickly
- D. simplifies the underlying structure of a customer WAN
- E. extends the network to remote users

Correct Answer: AB

Section: (none)

Explanation

Explanation/Reference:

QUESTION 129

You are designing a small branch office that requires these attributes:

support for 60 users
the growth capacity to add another 15 users soon
redundant access
higher bandwidth between the Layer 2 switch and routing to the WAN

Which branch office topology or technology must be used?

- A. EtherChannel
- B. loop-free
- C. three-tier
- D. two-tier
- E. integrated routing and switching

Correct Answer: A

Section: (none)

Explanation

Explanation/Reference:

"First Test, First Pass" - www.lead2pass.com 47
Cisco 640-864 Exam

QUESTION 130

Western Associated News Agency recently acquired a large news organization with several sites, which will allow it to expand to worldwide markets. The new acquisition includes these connectivity technologies:

Frame Relay
ATM
SONET
cable
DSL
wireless

From a Layer 1 viewpoint, which Enterprise Edge module will be most affected?

- A. Internet Connectivity
- B. E-Commerce
- C. PSTN
- D. Edge Distribution
- E. ISP
- F. WAN/MAN

Correct Answer: F

Section: (none)

Explanation

Explanation/Reference:

QUESTION 131

DRAG DROP

Match the bandwidth usage optimization technique on the left with its definition on the right.

queuing

limits the number of
acknowledgements

window size

reduces data size
optimizing the

traffic policing

allows network ad
varying demands

data compression

discards packets or
(such as

A. Answer:

"First Test, First Pass" - www.lead2pass.com 48
Cisco 640-864 Exam

Match the bandwidth usage optimization technique on the left with its definition on the right.

queuing

window size

traffic policing

data compression

Correct Answer:
Section: (none)
Explanation

Explanation/Reference:
"First Test, First Pass" - www.lead2pass.com 48
Cisco 640-864 Exam

Match the bandwidth usage optimization technique on the left with its definition on the right.

- queuing
- window size
- traffic policing
- data compression

-
- data
-
- t

QUESTION 132

Which two implementation plan principles best describe how to deal with potential failures? (Choose two.)

- A. A table of failure points, rollback steps, and estimated rollback times.
- B. A good implementation plan.
- C. A test should be included at every step.
- D. A detailed rollback procedure for each implementation step.
- E. A successful test network test.

Correct Answer: CD
Section: (none)
Explanation

Explanation/Reference:

QUESTION 133

Refer to the exhibit. You are documenting the existing network of a customer with a large installed Cisco network. The routers listed are in use on the network.

Which two additional pieces of information would be the most valuable in completing your documentation of these routers? (Choose two.)

435 Cisco model 2800 routers

129 Cisco model 3800 routers

10 Cisco model 7500 routers

- A. software revisions
- B. interface options
- C. power requirements
- D. error statistics
- E. management protocols

"First Test, First Pass" - www.lead2pass.com 49
Cisco 640-864 Exam

Correct Answer: AB

Section: (none)

Explanation

Explanation/Reference:

QUESTION 134

Which of these is the next step after the design phase in the PPDIOO process?

- A. Develop a high-level migration plan.
- B. Develop the implementation plan in as much detail as possible.
- C. Create a pilot or a prototype network.
- D. Identify which network management protocol will be used for which function.
- E. Order the equipment.

Correct Answer: B

Section: (none)

Explanation

Explanation/Reference:

QUESTION 135

You are designing IPv6 into an existing IPv4 network. Which two strategies can you use to allow both address schemes to coexist, thus facilitating migration? (Choose two)

- A. translate one protocol into the other
- B. redistribute between IPv6-capable and non-IPv6-capable routing protocols
- C. encapsulate IPv6 packets within IPv4 packets

- D. bridge between the IPv6 and IPv4 networks
- E. enable anycast capability in the routing protocol

Correct Answer: AC

Section: (none)

Explanation

Explanation/Reference:

QUESTION 136

A network is being designed to meet the requirements listed.

Within the enterprise network:

All routers are Cisco 3800 Series routers running the latest Cisco IOS release.
The fastest convergence time possible is required.
Unequal cost load-balancing is required.

For Internet connections:

A single link is used to connect to a single ISP.

Which two routing protocols should be used?(Choose two.)

- A. Use Internal BGP as the IGP within the enterprise.
- B. Use Static (Default) routing between the enterprise and the ISP.
- C. Use OSPF as the IGP within the enterprise.
- D. Use EIGRP as the IGP within the enterprise.
- E. Use EIGRP between the enterprise and the ISP.
- F. Use External BGP between the enterprise and the ISP.

Correct Answer: BD

Section: (none)

Explanation

Explanation/Reference:

"First Test, First Pass" - www.lead2pass.com 50
Cisco 640-864 Exam

QUESTION 137

Which two statements best describe Cisco Wireless LAN Guest Access in a Cisco Unified Wireless Network?
(Choose two.)

- A. Dedicated guest VLANs are only extended to the wireless controllers in the network to ensure path isolation.
- B. Guest tunnels have limitations on which wireless controllers can originate the tunnel.
- C. Dedicated guest VLANs are extended throughout the network to the access points for path isolation.
- D. Guest tunnels can originate and terminate on any wireless controller platform.
- E. Guest tunnels have limitations on which wireless controllers can terminate the tunnel.
- F. Dedicated guest access in the DMZ extends from the origination to the termination controllers without dedicated guest VLANs.

Correct Answer: EF

Section: (none)

Explanation

Explanation/Reference:

QUESTION 138

For which technology is IPsec required for a site-to-site enterprise WAN/MAN architecture?

- A. self-deployed MPLS
- B. ATM
- C. Frame Relay
- D. SP MPLS VPN
- E. ISP Service

Correct Answer: E

Section: (none)

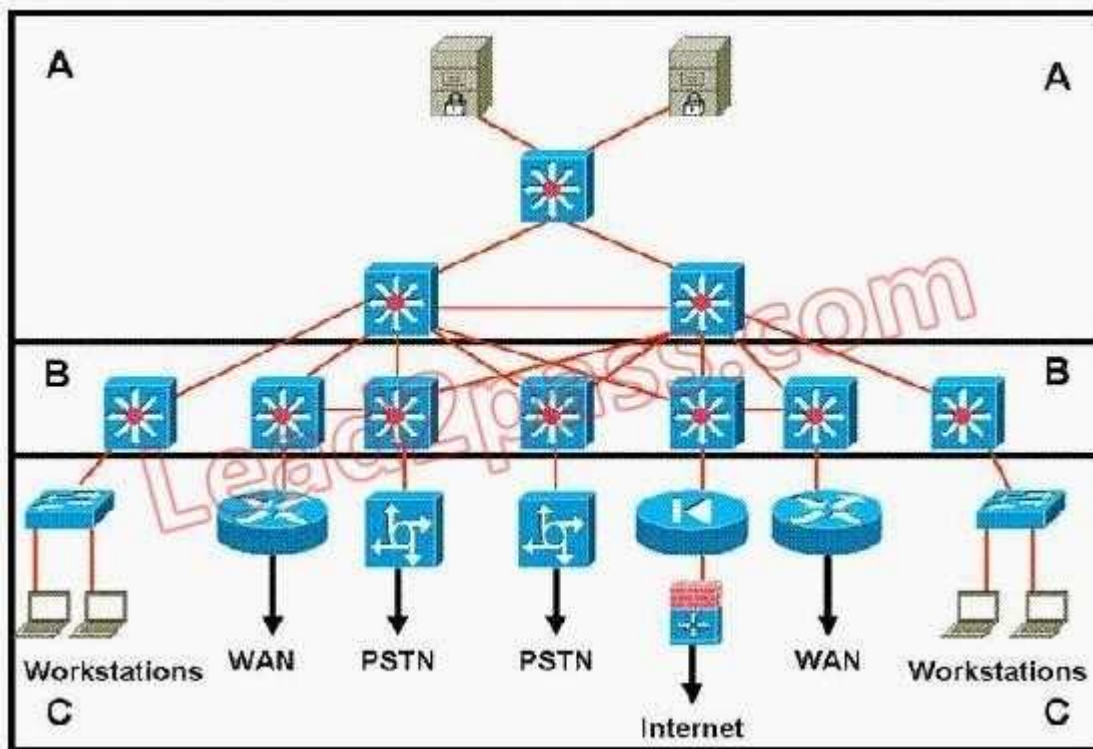
Explanation

Explanation/Reference:

QUESTION 139

Refer to the exhibit. Which statement accurately represents the characteristics of the core layer in this design?

"First Test, First Pass" - www.lead2pass.com 51
Cisco 640-864 Exam



- A. Access lists should be used in the core to perform packet manipulation.
- B. QoS should be performed only in the core.

- C. Load balancing should never be implemented or used in the core.
- D. It is acceptable to use a partial mesh in the core if it is connected to each device by multiple paths.
- E. Policy-based traffic control is implemented in the core to enable prioritization, ensuring the best performance for all time-critical applications.

Correct Answer: D

Section: (none)

Explanation

Explanation/Reference:

QUESTION 140

What does Cisco recommend as the foundation of any deployed security solution?

- A. Customer needs
- B. Security audit
- C. Service-level agreement
- D. Corporate security policy

Correct Answer: D

Section: (none)

Explanation

Explanation/Reference:

QUESTION 141

What is the administrative distance of eBGP routes?

- A. 200
- B. 100
- C. 20
- D. 110

"First Test, First Pass" - www.lead2pass.com 52
Cisco 640-864 Exam

Correct Answer: C

Section: (none)

Explanation

Explanation/Reference:

QUESTION 142

Which name is for the Cisco product that provides centralized, policy-based security management?

- A. IDS
- B. Out-of-band management
- C. AAA
- D. CSPM

Correct Answer: D

Section: (none)

Explanation

Explanation/Reference:

QUESTION 143

Which statement represents a likely starting point for planning network changes?

- A. Protocol assessment
- B. Determining the design requirements
- C. Determining the business needs
- D. Determining the application requirements

Correct Answer: D

Section: (none)

Explanation

Explanation/Reference:

QUESTION 144

What does IGMP stand for?

- A. Internet Group Management Protocol
- B. Interior Gateway Routing Protocol
- C. Interior Group Management Protocol
- D. Interior Gateway Media Protocol

Correct Answer: A

Section: (none)

Explanation

Explanation/Reference:

QUESTION 145

DRAG DROP

Select from these	Place here	Description
Agent	Place here	periodically collects object information
MIB	Place here	management transport mechanism
SNMP	Place here	generate traps of events
Manager	Place here	store information about network objects

A. Answer:

Select from these	Place here	Description
Agent	Manager	periodically collects object information
MIB	SNMP	management transport mechanism
SNMP	Agent	generate traps of events
Manager	MIB	store information about network objects

Correct Answer:

Section: (none)

Explanation

Explanation/Reference:

QUESTION 146

ISDN is short for Integrated Services Digital Network. Under what category of WAN technologies does ISDN belong?

- A. Cell-switched
- B. Circuit-switched
- C. Packet-switched
- D. Leased lines

Correct Answer: B

Section: (none)

Explanation

Explanation/Reference:

QUESTION 147

As a network engineer, can you tell me accounting management on a network-management system allows a network manager to perform which function?

- A. Assess the network's effectiveness and throughput
- B. Charge back to users for network resources
- C. Performance management
- D. Identify problem areas in the network

Correct Answer: B

Section: (none)

Explanation

Explanation/Reference:



<http://www.gratisexam.com/>

QUESTION 148

Which address type is 225.10.1.1?

- A. Unicast
- B. Anycast
- C. Multicast
- D. Broadcast

Correct Answer: C

Section: (none)

Explanation

Explanation/Reference:

QUESTION 149

"First Test, First Pass" - www.lead2pass.com 54
Cisco 640-864 Exam

What is the length of the key used with Triple Data Encryption Standard (3DES)?

- A. 64 bits
- B. 168 bits
- C. 128 bits
- D. 56 bits

Correct Answer: B

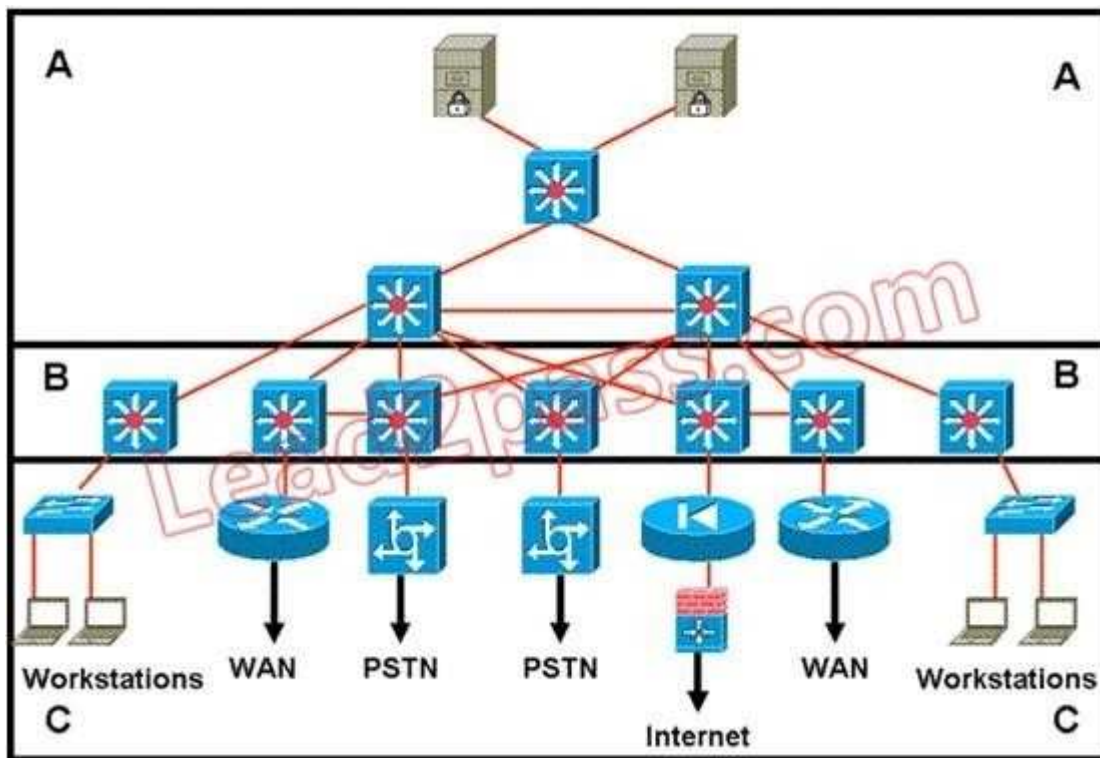
Section: (none)

Explanation

Explanation/Reference:

QUESTION 150

Refer to the exhibit.



Which layer is the distribution layer?

- A. Layer A
- B. Layer B
- C. Layer C
- D. Layers A and B form a consolidated core and distribution layer

Correct Answer: B

Section: (none)

Explanation

Explanation/Reference:

QUESTION 151

A wireless LAN or WLAN is a wireless local area network, which is the linking of two or more computers or devices without using wires. How are wireless LANs identified?

- A. Service Set Identifier (SSID)
- B. Internet Group Management Protocol (IGMP)
- C. IP network
- D. Wired Equivalent Privacy (WEP) key

Correct Answer: A

Section: (none)

Explanation

Explanation/Reference:

QUESTION 152

Observe the following options, what is the hierarchy for IPv6 aggregatable addresses?

- A. Global, site, loop
- B. Multicast, anycast, unicast
- C. Public, site, interface
- D. Internet, site, interface

Correct Answer: C

Section: (none)

Explanation

Explanation/Reference:

QUESTION 153

Which IGP protocol is a common choice to EIGRP and OSPF as a routing protocol for large networks?

- A. RIPv2
- B. IS-IS
- C. IGRP
- D. OSPFv2

Correct Answer: B

Section: (none)

Explanation

Explanation/Reference:

QUESTION 154

Which type of routing protocol will be used when connecting to an Internet service provider?

- A. Classless routing protocol
- B. Exterior gateway protocol
- C. Interior gateway protocol
- D. Classful routing protocol

Correct Answer: B

Section: (none)

Explanation

Explanation/Reference:

QUESTION 155

Which routing protocol is classful?

- A. Intermediate System-to-Intermediate System (IS-IS) and OSPF
- B. Routing Information Protocol Version 1 (RIPv1) and RIPv2

- C. IGRP and RIPv1
- D. Enhanced Interior Gateway Routing Protocol (EIGRP) and Open Shortest Path First (OSPF)

Correct Answer: C

Section: (none)

Explanation

Explanation/Reference:

QUESTION 156

Which attack type would you expect on segments that have many servers for some well-known

"First Test, First Pass" - www.lead2pass.com 56
Cisco 640-864 Exam

applications?

- A. Trojan horses
- B. DoS attacks
- C. Application-layer attacks
- D. Password attacks

Correct Answer: C

Section: (none)

Explanation

Explanation/Reference:

QUESTION 157

Which types of communicating devices compose RMON architecture ?(choose two)

- A. Router
- B. Switch
- C. Management station
- D. Monitor

Correct Answer: CD

Section: (none)

Explanation

Explanation/Reference:

QUESTION 158

Which FCAPS function includes finding network problems that reduce availability?

- A. Security management
- B. Accounting management
- C. Fault management
- D. Performance management

Correct Answer: C

Section: (none)

Explanation

Explanation/Reference:

QUESTION 159

What is the name of the organization that is in charge of creating the FCAPS architecture?

- A. ISP
- B. IOS
- C. ITU-T
- D. IEEE

Correct Answer: C

Section: (none)

Explanation

Explanation/Reference:

QUESTION 160

Define some of the activities, tools, and techniques used in today's network-design process.(Choose three.)

- A. Analyzing network traffic
- B. Simulation of network traffic
- C. Network auditing
- D. Filtering incoming network traffic

Correct Answer: ACD

Section: (none)

Explanation

Explanation/Reference:

"First Test, First Pass" - www.lead2pass.com 57
Cisco 640-864 Exam

QUESTION 161

Which is the remote monitoring agent in the RMON architecture called?

- A. Tree
- B. Station
- C. Agent
- D. Probe

Correct Answer: D

Section: (none)

Explanation

Explanation/Reference:

QUESTION 162

Which type of DSL does residential service use?

- A. VDSL
- B. SDSL
- C. IDSL
- D. ADSL

Correct Answer: D

Section: (none)

Explanation

Explanation/Reference:

QUESTION 163

Which item is not a part of the process recommended by Cisco for WAN designs?

- A. Characterize the existing network.
- B. Analyze customer requirements.
- C. Configure deployed services.
- D. Design the new WAN topology.

Correct Answer: C

Section: (none)

Explanation

Explanation/Reference:

QUESTION 164

In IS-IS networks, which routers does the backup designated router (BDR) form adjacencies to?

- A. Only to the DR.
- B. The BDR only becomes adjacent when the DR is down.
- C. To all routers.
- D. There is no BDR in IS-IS.

Correct Answer: D

Section: (none)

Explanation

Explanation/Reference:

QUESTION 165

What does Compressed Real-Time Transport Protocol (CRTP) compress ?

- A. RTP, TCP, and IP headers
- B. RTP headers
- C. RTP, User Datagram Protocol (UDP), and IP headers

D. Real-Time Transport Control Protocol (RTCP) headers
"First Test, First Pass" - www.lead2pass.com 58
Cisco 640-864 Exam

Correct Answer: C

Section: (none)

Explanation

Explanation/Reference:

QUESTION 166

Which mechanism will be often used by service providers to define their service offerings and to differentiate their services from their competitors?

- A. SLM
- B. SLA
- C. SLC
- D. SAA

Correct Answer: B

Section: (none)

Explanation

Explanation/Reference:

QUESTION 167

What is the virtual information store used within SNMP called?

- A. MIB
- B. RMON
- C. Protocol data unit (PDU)
- D. Abstract Syntax Notation One (ASN.1)

Correct Answer: A

Section: (none)

Explanation

Explanation/Reference:

QUESTION 168

Which standard language will be used by SNMP to define the device information to be stored?

- A. SNMPv4
- B. ASN.1
- C. MIBs
- D. Agents

Correct Answer: B

Section: (none)

Explanation

Explanation/Reference:

QUESTION 169

Which WAN scenario might be appropriate for queuing solutions?

- A. A newly implemented WAN connection has yet to demonstrate sufficient WAN statistics for congestion-level tracking.
- B. A WAN connection features consistent congestion problems, and data transfers often suffer.
- C. A WAN connection is rarely congested, and data transfers never suffer.
- D. A WAN connection features occasional periods of congestion, and data transfers have occasionally suffered as a result.

Correct Answer: D

Section: (none)

Explanation

Explanation/Reference:

QUESTION 170

Your boss is interested in a wireless WAN solution which provides higher bandwidth than point-to-

"First Test, First Pass" - www.lead2pass.com 59
Cisco 640-864 Exam

multipoint (p2mp) wireless. Which description is correct?

- A. Service providers cannot install point-to-point (p2p) links from a p2mp hub.
- B. P2p wireless connections can provide up to 44 Mbps raw bandwidth.
- C. P2p links tend to be slower than p2mp.
- D. P2mp wireless connections can provide up to 1.544 Mbps raw bandwidth.

Correct Answer: B

Section: (none)

Explanation

Explanation/Reference:

QUESTION 171

Examine the following protocols, which two are used for IP Security?

- A. Generic Routing Encapsulation (GRE) and Internetwork Packet Exchange (IPX)(EIGRP)
- B. Border Gateway Protocol (BGP) and Enhanced Interior Gateway Routing Protocol
- C. Authentication Header (AH) and Encapsulating Security Payload (ESP)
- D. Virtual Private Dial-Up Network (VPDN) and GRE

Correct Answer: C

Section: (none)

Explanation

Explanation/Reference:

QUESTION 172

What is SNMP?

- A. Simple Network Management Protocol
- B. Simple Network Monitoring Protocol
- C. Sampling Network Management Process
- D. Simple Network Maintenance Procedure

Correct Answer: A

Section: (none)

Explanation

Explanation/Reference:

QUESTION 173

When building Global network businesses , which three principles should be used?

- A. Customer focus, continuous standardization, and core versus context
- B. Customer focus, centralization, and core versus context
- C. Customer focus, decentralization, and core versus edge
- D. Customer focus, decentralization, and core versus context

Correct Answer: A

Section: (none)

Explanation

Explanation/Reference:

QUESTION 174

For the following items, which component of the CiscoWorks product allows a network administrator to define and manage service levels?

- A. Service assurance agent (SAA)
- B. Service level manager (SLM)
- C. Collection Manager (CM)
- D. Service level agreement (SLA)

Correct Answer: B

Section: (none)

Explanation

Explanation/Reference:

"First Test, First Pass" - www.lead2pass.com 60
Cisco 640-864 Exam

QUESTION 175

NAT-PT is an IPv6-IPv4 translation mechanism. What is NAT-PT?

▪

- A. addresses
- B. Network address translation-protocol translation; translates between IPv4 and IPv6 addresses
-
- C.
- D. Network addressable transparent-port translation; translates network addresses to ports

Correct Answer: B

Section: (none)

Explanation

Explanation/Reference:

QUESTION 176

What Cisco router configuration component does an implementer use to create a floating static route?

- A. Primary interface
- B. Administrative distance
- C. Loopback
- D. Description

Correct Answer: B

Section: (none)

Explanation

Explanation/Reference:

QUESTION 177

Which Cisco proprietary protocol will be used in LAN switches to control multicast traffic at the data link layer within a LAN switch?

- A. MAC filters
- B. Cisco Group Management Protocol (CGMP)
- C. Cisco Discovery Protocol (CDP)
- D. IGMP

Correct Answer: B

Section: (none)

Explanation

Explanation/Reference:

QUESTION 178

A common response to an attack by this device can be either to send an alert or to take corrective action. What is this device?

- A. Vulnerability assessment
- B. Firewall

- C. Intrusion-detection system (IDS)
- D. Router

Correct Answer: C

Section: (none)

Explanation

Explanation/Reference:

QUESTION 179

How many more bits does IPv6 use for addresses than IPv4?

"First Test, First Pass" - www.lead2pass.com 61
Cisco 640-864 Exam

- A. 32
- B. 64
- C. 96
- D. 128

Correct Answer: C

Section: (none)

Explanation

Explanation/Reference:

QUESTION 180

Which protocol will be used to exchange IP routes between autonomous systems?

- A. eBGP
- B. IGMP
- C. IGRP
- D. OSPF

Correct Answer: A

Section: (none)

Explanation

Explanation/Reference:

QUESTION 181

What does the Cisco security architecture called SAFE stand for?

- A. Security Architecture for Enterprise
- B. Standard Assessment for Enterprise
- C. Security Analysis for Enterprise
- D. Standard Architecture for Enterprise

Correct Answer: A

Section: (none)

Explanation

Explanation/Reference:

QUESTION 182

You are a network technician, can you tell me how many IP addresses are available for hosts in the subnet 198.10.100.64/27?

- A. 62
- B. 30
- C. 126
- D. 14

Correct Answer: B

Section: (none)

Explanation

Explanation/Reference:

QUESTION 183

Which two encryption transforms will be used by both ESP and AH for authentication?

- A. HMAC-MD5 or Hash Message Authentication Code-Secure Hash Algorithm-1(HMAC-SHA-1)
- B. DES or 3DES
- C. DES or Hash Message Authentication Code-Message Digest 5 (HMAC-MD5)
- D. 3DES or MD5

Correct Answer: A

Section: (none)

Explanation

Explanation/Reference:

"First Test, First Pass" - www.lead2pass.com 62
Cisco 640-864 Exam

QUESTION 184

For the following options, which emerging WAN technology uses DSL coding and digital modulation techniques with Ethernet?

- A. Cable
- B. Wireless
- C. SMDS
- D. Long-Reach Ethernet (LRE)

Correct Answer: D

Section: (none)

Explanation

Explanation/Reference:

QUESTION 185

What is SLC?

- A. Standard level contracts
- B. Standard level configuration
- C. Service level contracts
- D. Service level configuration

Correct Answer: C

Section: (none)

Explanation

Explanation/Reference:

QUESTION 186

What does ODR stand for?

- A. Open default routing
- B. Optical demand routing
- C. Open dedicated routing
- D. On-demand routing

Correct Answer: D

Section: (none)

Explanation

Explanation/Reference:

QUESTION 187

Observe the following options, in which section of the network document does Cisco recommend a discussion of performance, scalability, capacity, security, and traffic needs?

- A. Design summary
- B. Design solution
- C. Executive summary
- D. Design requirements

Correct Answer: B

Section: (none)

Explanation

Explanation/Reference:

QUESTION 188

In telephony, the local loop is the physical link or circuit. Where is the local loop located?

- A. Between the loopback interfaces of two VoIP routers
- B. Between phones and the central office (CO) switch

- C. Between two PBXs
 - D. Between two PSTN switches
- "First Test, First Pass" - www.lead2pass.com 63
Cisco 640-864 Exam

Correct Answer: B

Section: (none)

Explanation

Explanation/Reference:

QUESTION 189

Which advantage is of security systems that are part of the Cisco ecosystem?

- A. There is a suite of products to choose from.
- B. Various partners as well as supporting products increase the effectiveness of security systems.
- C. There are no advantages.
- D. The Cisco ecosystem ensure that partners can implement the solution.

Correct Answer: B

Section: (none)

Explanation

Explanation/Reference:

QUESTION 190

What is ASBR short for?

- A. Area Border Router
- B. Auxiliary System Border Router
- C. Area System Border Router
- D. Autonomous System Boundary Router

Correct Answer: D

Section: (none)

Explanation

Explanation/Reference:

QUESTION 191

Area Border Router (ABR) is defined by which protocol?

- A. Enhanced Interior Gateway Routing Protocol (EIGRP)
- B. OSPF
- C. On-Demand Routing (ODR)
- D. IS-IS

Correct Answer: B

Section: (none)

Explanation

Explanation/Reference:

QUESTION 192

Which queuing mechanism establishes four interface output queues that will be used for traffic scheduling?

- A. Priority queuing (PQ)
- B. First-in, first-out (FIFO)
- C. Weighted fair queuing (WFQ)
- D. Custom queuing (CQ)

Correct Answer: A

Section: (none)

Explanation

Explanation/Reference:

QUESTION 193

Which option is not valid for using the public Internet as a backup WAN medium?

- A. IP Security (IPSec) tunnels
- B. Shared PVC
"First Test, First Pass" - www.lead2pass.com 64
Cisco 640-864 Exam
- C. IP routing without constraints
- D. Generic Routing Encapsulation (GRE) tunnels

Correct Answer: B

Section: (none)

Explanation

Explanation/Reference:

QUESTION 194

For the following items, which is an SP Edge module in the Enterprise Composite Network model?

- A. Core layer
- B. Edge distribution
- C. Public Switched Telephone Network (PSTN) service
- D. Server farm

Correct Answer: C

Section: (none)

Explanation

Explanation/Reference:

QUESTION 195

Which method will be used to secure a network against man-in-the-middle attack?

- A. Two-factor authentication
- B. Management module
- C. Encryption
- D. Firewall

Correct Answer: C

Section: (none)

Explanation

Explanation/Reference:

QUESTION 196

What is important for the top-down design concept?

- A. Engagement of the HR representatives during the design process
- B. Engagement of the top executives during the design process
- C. Engagement of the employees working on the top floors in the building during the design process
- D. Engagement of the top executives once the design process is finalized

Correct Answer: B

Section: (none)

Explanation

Explanation/Reference:

QUESTION 197

Which one of the following QoS mechanisms is recommended for VoIP networks?

- A. Low-latency queuing (LLQ)
- B. Switched-based queuing
- C. Fast queuing
- D. Custom queuing

Correct Answer: A

Section: (none)

Explanation

Explanation/Reference:

QUESTION 198

In which layer of the OSI model does Real-Time Transport Protocol (RTP) operate ?

"First Test, First Pass" - www.lead2pass.com 65
Cisco 640-864 Exam

- A. Network
- B. Application

- C. Transport
- D. Session

Correct Answer: C

Section: (none)

Explanation

Explanation/Reference:

QUESTION 199

Developing a network design according to layers such as core and distribution is an example of which type of design methodology?

- A. Flat design
- B. Top-down
- C. Hierarchical structured design
- D. PDIOO

Correct Answer: C

Section: (none)

Explanation

Explanation/Reference:

QUESTION 200

Which parameters does the computation of the EIGRP composite metric use by default?

- A. Bandwidth and reliability
- B. Bandwidth and load
- C. Bandwidth and maximum transmission unit (MTU)
- D. Bandwidth and delay

Correct Answer: D

Section: (none)

Explanation

Explanation/Reference:

QUESTION 201

Which statement is true about WANs?

- A. Switches or concentrators often relay information through the WAN.
- B. WANs typically encompass broad geographic areas.
- C. In general, WAN technologies function at the middle three layers of the Open System Interconnection (OSI) model.
- D. Users of WANs do not typically own all transmission facilities.

Correct Answer: B

Section: (none)

Explanation

Explanation/Reference:

QUESTION 202

Which item is not a true disadvantage of the full-mesh topology?

- A. Central hub router represents a single point of failure in the network.
- B. High level of complexity to implement.
- C. Large number of packet replications required.
- D. High costs due to number of virtual circuits.

Correct Answer: A

Section: (none)

Explanation

Explanation/Reference:

"First Test, First Pass" - www.lead2pass.com 66
Cisco 640-864 Exam

QUESTION 203

Which IPv4 field are the precedence bits located in?

- A. IP destination address
- B. Type-of-service field
- C. IP options field
- D. IP protocol field

Correct Answer: B

Section: (none)

Explanation

Explanation/Reference:

QUESTION 204

Which hierarchical layer has functions such as High availability, port security, and rate limiting?

- A. Core
- B. Access
- C. Network
- D. Distribution

Correct Answer: B

Section: (none)

Explanation

Explanation/Reference:

QUESTION 205

With which of the following capabilities does RIPv2 improve RIPv1?

- A. Multicast updates, authentication, variable-length subnet mask (VLSM)
- B. Authentication, VLSM, hop count
- C. Multicast updates, authentication, hop count
- D. Multicast updates, hop count

Correct Answer: A

Section: (none)

Explanation

Explanation/Reference:

QUESTION 206

Which is the maximum segment distance for Fast Ethernet over unshielded twisted-pair (UTP)?

- A. 285 feet
- B. 100 feet
- C. 500 feet
- D. 100 meters

Correct Answer: D

Section: (none)

Explanation

Explanation/Reference:

QUESTION 207

Which term accurately describes a specific measure of delay often used to describe voice and video networks?

- A. Jitter
 - B. Flux
 - C. Latency
 - D. Reliability
- "First Test, First Pass" - www.lead2pass.com 67
Cisco 640-864 Exam

Correct Answer: A

Section: (none)

Explanation

Explanation/Reference:

QUESTION 208

Which layer is in charge of fast transport in the hierarchical network model?

- A. Network
- B. Distribution
- C. Access

D. Core

Correct Answer: D

Section: (none)

Explanation

Explanation/Reference:

QUESTION 209

SNMP is short for Simple Network Management Protocol. Which version or versions of SNMP specify security extensions as part of the protocol definition?

- A. SNMPv2
- B. SNMPv4
- C. SNMPv3
- D. SNMPv1

Correct Answer: C

Section: (none)

Explanation

Explanation/Reference:

QUESTION 210

What is the reason for switching preferred on shared segments?

- A. Switched segments provide a collision domain for each host.
- B. Switched segments provide a broadcast domain for each host
- C. Shared segments provide a broadcast domain for each host.
- D. Shared segments provide a collision domain for each host.

Correct Answer: A

Section: (none)

Explanation

Explanation/Reference:

QUESTION 211

Study the following options carefully. The corporate Internet is part of which functional area?

- A. Enterprise Edge
- B. Enterprise Campus
- C. Service Provider (SP) Edge
- D. Enterprise

Correct Answer: A

Section: (none)

Explanation

Explanation/Reference:

QUESTION 212

Which H.323 protocol is in charge of call setup and signaling?

- A. RTCP
"First Test, First Pass" - www.lead2pass.com 68
Cisco 640-864 Exam
- B. H.245
- C. G.711
- D. H.225

Correct Answer: D

Section: (none)

Explanation

Explanation/Reference:

QUESTION 213

How often does a RIPv1 router broadcast its routing table by default?

- A. Every 90 seconds.
- B. Every 30 seconds.
- C. Every 60 seconds.
- D. RIPv1 does not broadcast periodically.

Correct Answer: B

Section: (none)

Explanation

Explanation/Reference:

QUESTION 214

For the following protocols, which one maps names to IPv6 addresses?

- A. Domain Name System (DNS)
- B. DNSv2
- C. Address Resolution Protocol (ARP)
- D. Neighbor discovery (ND)

Correct Answer: A

Section: (none)

Explanation

Explanation/Reference:

QUESTION 215

What does CDP stand for ?

- A. Collection Device Protocol
- B. Campus Discovery Protocol
- C. Cisco Device Protocol
- D. Cisco Discovery Protocol

Correct Answer: D

Section: (none)

Explanation

Explanation/Reference:

QUESTION 216

For the following options, which International Telecommunication Union (ITU) standard provides a framework for multimedia protocols for the transport of voice, video, and data over packet- switched networks?

- A. Weighted fair queuing (WFQ)
- B. H.323
- C. Voice over IP (VoIP)
- D. Session Initiation Protocol (SIP)

Correct Answer: B

Section: (none)

Explanation

Explanation/Reference:

"First Test, First Pass" - www.lead2pass.com 69
Cisco 640-864 Exam

QUESTION 217

Which feature will not transfer packets when there is silence?

- A. Ear and mouth (E&M)
- B. Voice Activity Detection (VAD)
- C. Digital Silence Suppressor (DSS)
- D. Dial peers

Correct Answer: B

Section: (none)

Explanation

Explanation/Reference:

QUESTION 218

What does the Cisco SLM define as the component used to specify expected performance between a pair of devices connected by a network?

- A. CM
- B. SLC
- C. SLA
- D. SAA

Correct Answer: C

Section: (none)

Explanation

Explanation/Reference:

QUESTION 219

In a network with Enhanced Interior Gateway Routing Protocol (EIGRP) and IGRP using the same autonomous system number, what will happen on the router configured with both protocols?

- A. Redistribution occurs automatically.
- B. Redistribution is not necessary.
- C. EIGRP assumes IGRP is a less capable protocol and overtakes it.
- D. Redistribution does not occur automatically.

Correct Answer: A

Section: (none)

Explanation

Explanation/Reference:

QUESTION 220

What is the acronym PDIOO short for?

- A. Purpose, design, install, operation, optimization
- B. Purpose, design, implement, operate, optimize
- C. Plan, design, install, operation, optimization
- D. Plan, design, implement, operate, optimize

Correct Answer: D

Section: (none)

Explanation

Explanation/Reference:

QUESTION 221

Which item is not an SNMP operation?

- A. GetNext
- B. Community
- C. Trap
- D. Set

"First Test, First Pass" - www.lead2pass.com 70
Cisco 640-864 Exam

Correct Answer: B

Section: (none)

Explanation

Explanation/Reference:

QUESTION 222

Which packet-switching topology approach typically requires the greatest level of expertise to implement?

- A. Hub and spoke
- B. Point-to-point
- C. Star
- D. Partial mesh

Correct Answer: D

Section: (none)

Explanation

Explanation/Reference:

QUESTION 223

The network-design process is limited by many external constraints. Which origins are of these constraints?

- A. Technological, worldwide standards, social, and managerial
- B. Technological, political, social, and economical
- C. Technological, cost, social, and economical
- D. Managerial, political, social, and economical

Correct Answer: B

Section: (none)

Explanation

Explanation/Reference:

QUESTION 224

What does FCAPS stand for?

- A. Fault, caching, application, production, security
- B. Fault, configuration, accounting, performance, security
- C. Fiscal, communication, application, production, security
- D. Fault, consolidation, accounting, performance, security

Correct Answer: B

Section: (none)

Explanation

Explanation/Reference:

QUESTION 225

What is DHCP?

- A. Dynamic Host Configuration Protocol

- B. Dedicated Host Configuration Protocol
- C. Dynamic Host Control Protocol
- D. Predecessor to BOOTP

Correct Answer: A

Section: (none)

Explanation

Explanation/Reference:

QUESTION 226

Which answer is correct about routing metrics?

"First Test, First Pass" - www.lead2pass.com 71
Cisco 640-864 Exam

- A. If the metric is cost, the path with the highest cost is selected.
- B. If the metric is bandwidth, the path with the highest bandwidth is selected.
- C. If the metric is bandwidth, the path with the lowest bandwidth is selected.
- D. If the metric is bandwidth, the highest sum of the bandwidth is used to calculate the highest

Correct Answer: B

Section: (none)

Explanation

Explanation/Reference:

QUESTION 227

Where do you put DNS and DHCP on Enterprise model? Select two.

- A. Enterprise campus Server Farm Module
- B. Enterprise edge
- C. SP Edge Premise
- D. Enterprise Branch

Correct Answer: AD

Section: (none)

Explanation

Explanation/Reference:

QUESTION 228

Which two of these are functions of an access point in a Split MAC Network Architecture? (Choose two.)

- A. EAP Authentication
- B. MAC layer encryption or decryption
- C. 802.1Q encapsulation
- D. Process probe response

Correct Answer: BD

Section: (none)

Explanation

Explanation/Reference:

QUESTION 229

Data link switching is typically used in which Enterprise Campus Module layer?

- A. Server Farm
- B. Campus Core
- C. Building Access
- D. Building Distribution
- E. Internet Connectivity

Correct Answer: C

Section: (none)

Explanation

Explanation/Reference:

QUESTION 230

Which three of these are components of the North American Numbering Plan? (Choose three.)

- A. Numbering Plan Area
 - B. country code
 - C. prefix
 - D. zone
 - E. line number
 - F. trunk channel
- "First Test, First Pass" - www.lead2pass.com 72
Cisco 640-864 Exam

Correct Answer: ACE

Section: (none)

Explanation

Explanation/Reference:

QUESTION 231

Which two statements about the Enterprise Data Center Aggregation submodule are correct? (Choose two.)

- A. it provides Layer 4-7 services
- B. it should never support STP
- C. it is the critical point for control and application services
- D. it typically provides Layer 2 connectivity from the data center to the core

Correct Answer: AC

Section: (none)

Explanation

Explanation/Reference:

QUESTION 232

Which network management protocol allows a network device to have vendor-specific objects for management?

- A. SNMP v1
- B. SNMP v2
- C. SNMP v3
- D. MIB
- E. RMON1
- F. RMON2

Correct Answer: D

Section: (none)

Explanation

Explanation/Reference:

QUESTION 233

Which two solutions are parts of the Cisco Security Management Suite? (Choose two.)

- A. ASA
- B. Cisco Security Agent
- C. NAC Appliance
- D. csm
- E. pix
- F. Cisco Security MARS

Correct Answer: DF

Section: (none)

Explanation

Explanation/Reference:

QUESTION 234

When monitoring voice traffic on a converged network, which are the three most important QoS characteristics to pay attention to? (Choose three.)

- A. delay
 - B. jitter
 - C. packet loss
 - D. bit error rate
 - E. CRTP hop configuration
- "First Test, First Pass" - www.lead2pass.com 73
Cisco 640-864 Exam

Correct Answer: ABC

Section: (none)

Explanation

Explanation/Reference:

QUESTION 235

An internal network has servers with private IPv4 addresses that must be visible from the public network. Which kind of address translation should be used to ensure this?

- A. many-to-one translation (PAT)
- B. many-to-one translation (Dynamic NAT)
- C. one-to-one translation (Static NAT)
- D. one-to-one translation (NAT Traversal)

Correct Answer: C

Section: (none)

Explanation

Explanation/Reference:

QUESTION 236

Which two of these are the most accurate characteristics of EIGRP deployment? (Choose two.)

- A. Provides features for most Ethernet, Frame Relay, and dial-up network deployment types.
- B. Provides routing for IPv4, IPv6, Appletalk, and IPX.
- C. Provides default hierarchical routing and summarization of a VLSM IP address deployment.
- D. Provides quick convergence through neighbor relationships and topology backup routes.
- E. Provides the best route selection on combined default metrics of active bandwidth, delay, load, reliability, and MTU parameters.

Correct Answer: BD

Section: (none)

Explanation

Explanation/Reference:

QUESTION 237

Which of the following is a modular component within the Cisco Enterprise Campus module in the Cisco Enterprise Architecture framework?

- A. Teleworker
- B. E-Commerce
- C. Internet Connectivity
- D. Building Distribution
- E. WAN/MAN Site-to-Site VPN

Correct Answer: D

Section: (none)

Explanation

Explanation/Reference:

QUESTION 238

A company is implementing an Identity Management solution with these characteristics:

existing Cisco ACS 4.0
Cisco Catalyst switches
minimal added investments

Which Cisco Trust and Identity solution would you recommend?

- A. NAC Appliance (Cisco Clean Access)
- B. Cisco IBNS
- C. NAC Framework
"First Test, First Pass" - www.lead2pass.com 74
Cisco 640-864 Exam
- D. Cisco Security Agent
- E. csm
- F. Cisco Security MARS

Correct Answer: B

Section: (none)

Explanation

Explanation/Reference:

QUESTION 239

Which two design methodology steps relate, at least in part, to the implement phase of the PPDIOO process?
(Choose two.)

- A. verifying the network
- B. testing design
- C. determining customer requirements
- D. characterizing the existing network
- E. establishing the organizational requirements

Correct Answer: AB

Section: (none)

Explanation

Explanation/Reference:

QUESTION 240

Which H.323 protocol monitors calls for factors such as packet counts, packet loss, and arrival jitter?

- A. H.225
- B. H.245
- C. RAS

D. RTP

Correct Answer: D

Section: (none)

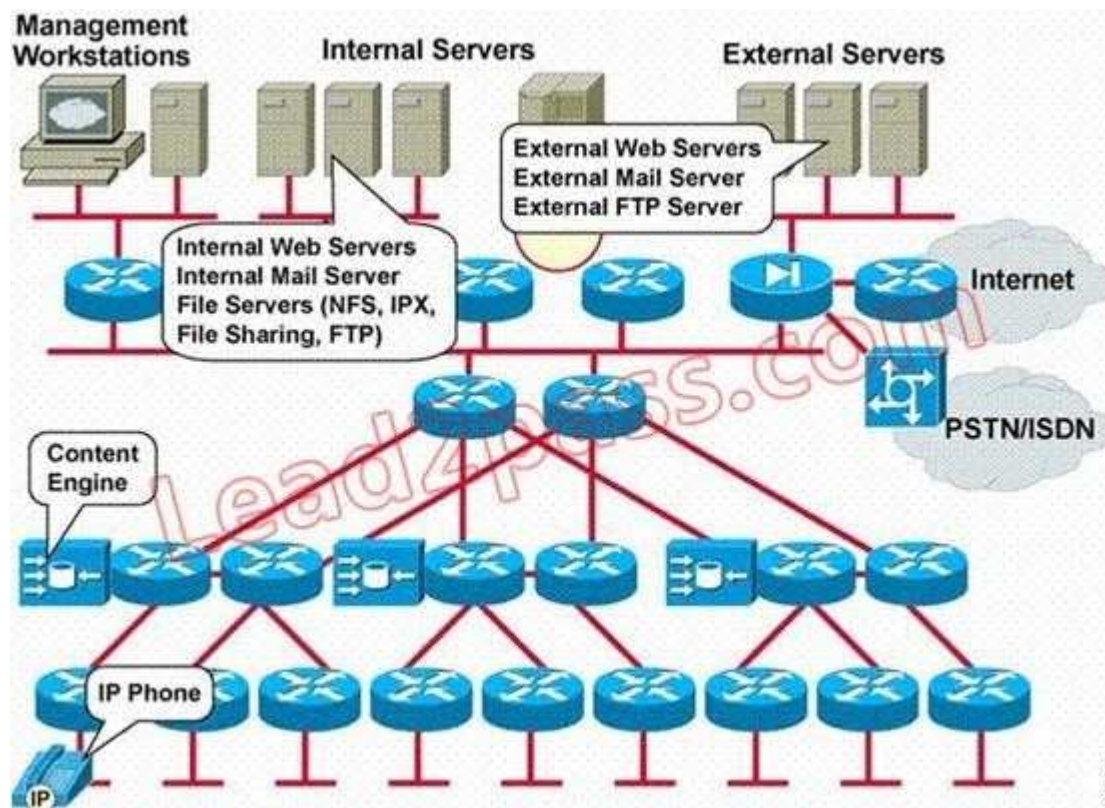
Explanation

Explanation/Reference:

QUESTION 241

Refer to the exhibit.

"First Test, First Pass" - www.lead2pass.com 75
Cisco 640-864 Exam



Which element or elements of the existing network infrastructure does this network map emphasize?

- A. network services
- B. network protocols
- C. the OSI data link layer
- D. network applications

Correct Answer: D

Section: (none)

Explanation

Explanation/Reference:

QUESTION 242

The BodMech online fitness organization specializes in creating fitness plans for senior citizens. The company recently added a health-products retail inventory. Which E-Commerce module device will allow customers to interact with the company and purchase products?

- A. application server
- B. database server
- C. public server
- D. web server
- E. NIDS appliance
- F. SMTP mail server

Correct Answer: D

Section: (none)

Explanation

Explanation/Reference:

QUESTION 243

"First Test, First Pass" - www.lead2pass.com 76
Cisco 640-864 Exam

Which two of the following are benefits of using a modular approach to network design? (Choose two.)

- A. improves flexibility
- B. facilitates implementation
- C. lowers implementation costs
- D. improves customer participation in the design process

Correct Answer: AB

Section: (none)

Explanation

Explanation/Reference:

QUESTION 244

Which statement describes the recommended deployment of DNS and DHCP servers in the Cisco Enterprise Architecture Model?

- A. Place the DHCP and DNS servers in the Enterprise Campus Access layer and Enterprise branch.
- B. Place the DHCP and DNS servers in the Enterprise Campus Server Farm layer and Enterprise branch.
- C. Place the DHCP server in the Enterprise Campus Core layer and Remote Access/VPN module with the DNS server in the Internet Connectivity module.
- D. Place the DHCP server in the Enterprise Campus Distribution layer with the DNS server in the Internet Connectivity module.

Correct Answer: B

Section: (none)

Explanation

Explanation/Reference:

QUESTION 245

Which two routing protocols usually converge most quickly? (Choose two.)

- A. RIPv1
- B. RIPv2
- C. BGP
- D. IGRP
- E. EIGRP
- F. OSPF

Correct Answer: EF

Section: (none)

Explanation

Explanation/Reference:

QUESTION 246

Which two wireless attributes should be considered during a wireless site survey procedure? (Choose two.)

- A. encryption
- B. channel
- C. authentication
- D. power
- E. SSID

Correct Answer: BD

Section: (none)

Explanation

Explanation/Reference:

QUESTION 247

"First Test, First Pass" - www.lead2pass.com 77
Cisco 640-864 Exam

When designing using the Cisco Enterprise Architecture, in which Enterprise Campus layer does the Enterprise Teleworker module establish its connection?

- A. Building Core
- B. Building Access
- C. Enterprise Branch
- D. Enterprise Data Center
- E. WAN/Internet

Correct Answer: E

Section: (none)

Explanation

Explanation/Reference:

QUESTION 248

Which three of these are layers in the Cisco SONA Architecture? (Choose three.)

- A. Application
- B. Physical
- C. Presentation
- D. Integrated Transport
- E. Interactive Services
- F. Networked Infrastructure

Correct Answer: AEF

Section: (none)

Explanation

Explanation/Reference:

QUESTION 249

What is the benefit of VLSM?

- A. reduces configuration complexity by using the same subnet mask length
- B. reduces the routing table size by using automatic route summarization
- C. reduces the routing table size by using manual route summarization
- D. allows the subnet mask and classful routing updates to be advertised
- E. secures the hosts on a subnet by using RFC 1918 addresses

Correct Answer: C

Section: (none)

Explanation

Explanation/Reference:

QUESTION 250

You are performing an audit of a customer's existing network and need to obtain the following router information:

Interfaces
running processes
IOS image being executed

Which command should you use?

- A. show version
- B. show tech-support
- C. show startup-config
- D. show running-config
- E. show processes memory

"First Test, First Pass" - www.lead2pass.com 78

Correct Answer: B

Section: (none)

Explanation

Explanation/Reference:

QUESTION 251

What is the recommended spanning tree protocol to use for all Layer 2 deployments in a branch office environment?

- A. CST
- B. RSPT
- C. PVST
- D. MISTP
- E. Rapid PVST +

Correct Answer: E

Section: (none)

Explanation

Explanation/Reference:

QUESTION 252

Which Cisco device management feature is most suited to metering network traffic and providing data for billing network usage?

- A. BGP
- B. Cisco Discovery Protocol
- C. QoS
- D. RMON
- E. NetFlow

Correct Answer: E

Section: (none)

Explanation

Explanation/Reference:

QUESTION 253

Which of these domain-of-trust security statements is correct?

- A. Segments within a network should have the same trust models.
- B. An administrator should apply consistent security controls between segments.
- C. Communication between trusted entities needs to be carefully managed and controlled.
- D. Segment security policy decisions are based on trust.

Correct Answer: D

Section: (none)

Explanation

Explanation/Reference:

QUESTION 254

When collecting information about a customer's existing network, which two sources will provide the most accurate data? (Choose two.)

- A. traffic analysis
- B. customer interview
- C. customer-supplied server list
- D. existing network topology diagram
- E. configurations obtained from network equipment

Correct Answer: AE

Section: (none)

Explanation

Explanation/Reference:

"First Test, First Pass" - www.lead2pass.com 79
Cisco 640-864 Exam

QUESTION 255

Which modules are found in the Enterprise Edge functional area of the Cisco Enterprise Architecture? Select all that apply.

- A. Teleworker
- B. WAN/MAN
- C. Server Farm
- D. E-Commerce
- E. Internet Connectivity
- F. Remote Access/VPN

Correct Answer: BDEF

Section: (none)

Explanation

Explanation/Reference:

QUESTION 256

A campus network needs end-to-end QoS tools to manage traffic and ensure voice quality. Which three types of QoS tools are needed? (Choose three.)

- A. interface queuing and scheduling
- B. congestion management
- C. compression and fragmentation
- D. bandwidth provisioning
- E. traffic classification
- F. buffer management

Correct Answer: ADE

Section: (none)

Explanation

Explanation/Reference:

QUESTION 257

Which H.323 protocol is responsible for the exchanging of capabilities and the opening and closing of logical channels?

- A. H.225
- B. H.245
- C. RAS
- D. RTCP

Correct Answer: B

Section: (none)

Explanation

Explanation/Reference:

FEEDBACK FROM USERS

QUESTION 258

Drag and Drop

RMON -> complete monitor of all OSI layers

SNMP -> communication between devices and monitoring

CDP -> data link, multicast

NetFlow -> processes ACLs, packet analysis for security

A. Answer:

Correct Answer:

Section: (none)

Explanation

Explanation/Reference:

QUESTION 259

Drag and Drop

Http/Email -> Application

IP Phone/Voice -> network services

Budget -> Business Constraints

Security -> Technical Goals

A. Answer:

Correct Answer:

Section: (none)

Explanation

Explanation/Reference:

QUESTION 260

Drag and Drop

Cisco Unified Communication System -> Cisco Nexus1000 and Enforcing vm Security
VSAN/VLAN -> Network and Server Virtualization
Data Center Virtualization -> Pending

A. Answer:

Correct Answer:

Section: (none)

Explanation

Explanation/Reference:

QUESTION 261

Drag and Drop

SNMP -> Defines the Communication Type
CDP -> Uses layer 2 and Multicast
Netflow -> Pending
RMON -> ACL and Security Analysis

"First Test, First Pass" - www.lead2pass.com 81
About Lead2pass.com

Lead2pass.com was founded in 2006. We provide latest & high quality IT Certification Training Exam Questions, Study Guides, Practice Tests. Lead the way to help you pass any IT Certification exams, 100% Pass Guaranteed or Full Refund. Especially Cisco, CompTIA, Citrix, EMC, HP, Oracle, VMware, Juniper, Check Point, LPI, Nortel, EXIN and so on.

Our Slogan: First Test, First Pass.

Help you to pass any IT Certification exams at the first try.

You can reach us at any of the email addresses listed below.

Sales: sales@lead2pass.com

Support: support@lead2pass.com

Technical Assistance Center: technology@lead2pass.com

Any problems about IT certification or our products, you could rely upon us, we will give you satisfactory answers in 24 hours.

Our Official: <http://www.Lead2pass.com>

A. Answer:

Correct Answer:

Section: (none)

Explanation**Explanation/Reference:****QUESTION 262**

In terms of remote office design, which one of these statements is a characteristics only of a small remote office (up to 50 user), and not of medium or remote offices?

- A. Link redundancy to access layer switches is not possible with an integrated design.
- B. A collapsed access and distribution layer is required.
- C. There are no loops in the network design.
- D. Layer 3 services such as DHCP, firewall, and NAT are provided by enterprise campus.

Correct Answer: C

Section: (none)

Explanation**Explanation/Reference:****QUESTION 263**

A network is being designed to meet the requirements listed.

Within the enterprise network:

All routers are Cisco 3800 Series routers running the latest Cisco IOS release.
The fastest convergence time possible is required.
Unequal cost load-balancing is required.

For Internet connections:

A single link is used to connect to a single ISP.

Which two routing protocols should be used?(Choose two.)

- A. Use Internal BGP as the IGP within the enterprise.
- B. Use Static (Default) routing between the enterprise and the ISP.
- C. Use OSPF as the IGP within the enterprise.
- D. Use EIGRP as the IGP within the enterprise.
- E. Use EIGRP between the enterprise and the ISP.
- F. Use External BGP between the enterprise and the ISP.

Correct Answer: BD

Section: (none)

Explanation**Explanation/Reference:**

"First Test, First Pass" - www.lead2pass.com 50
Cisco 640-864 Exam

QUESTION 264

What does Cisco recommend as the foundation of any deployed security solution?

- A. Customer needs
- B. Security audit
- C. Service-level agreement
- D. Corporate security policy

Correct Answer: D

Section: (none)

Explanation

Explanation/Reference:

QUESTION 265

What does IGMP stand for?

- A. Internet Group Management Protocol
- B. Interior Gateway Routing Protocol
- C. Interior Group Management Protocol
- D. Interior Gateway Media Protocol

Correct Answer: A

Section: (none)

Explanation

Explanation/Reference:

QUESTION 266

Which consideration is the most important for the network designer when considering IP routing?

- A. convergence
- B. scalability
- C. on-demand routing
- D. redistribution

Correct Answer: A

Section: (none)

Explanation

Explanation/Reference:

QUESTION 267

Which two solutions are parts of the Cisco Security Management Suite? (Choose two.)

- A. ASA
- B. Cisco Security Agent
- C. NAC Appliance
- D. csm
- E. pix
- F. Cisco Security MARS

Correct Answer: DF

Section: (none)

Explanation

Explanation/Reference:

QUESTION 268

Which of the following is a modular component within the Cisco Enterprise Campus module in the Cisco Enterprise Architecture framework?

- A. Teleworker
- B. E-Commerce
- C. Internet Connectivity
- D. Building Distribution
- E. WAN/MAN Site-to-Site VPN

Correct Answer: D

Section: (none)

Explanation

Explanation/Reference:

QUESTION 269

Which three of these are layers in the Cisco SONA Architecture? (Choose three.)

- A. Application
- B. Physical
- C. Presentation
- D. Integrated Transport
- E. Interactive Services
- F. Networked Infrastructure

Correct Answer: AEF

Section: (none)

Explanation

Explanation/Reference:

QUESTION 270

Which H.323 protocol is responsible for the exchanging of capabilities and the opening and closing of logical channels?

- A. H.225
- B. H.245
- C. RAS
- D. RTCP

Correct Answer: B

Section: (none)

Explanation

Explanation/Reference:

FEEDBACK FROM USERS

QUESTION 271

Drag and Drop

SNMP -> Defines the Communication Type

CDP -> Uses layer 2 and Multicast

Netflow -> Pending

RMON -> ACL and Security Analysis

"First Test, First Pass" - www.lead2pass.com 81

About Lead2pass.com

Lead2pass.com was founded in 2006. We provide latest & high quality IT Certification Training Exam Questions, Study Guides, Practice Tests. Lead the way to help you pass any IT Certification exams, 100% Pass Guaranteed or Full Refund. Especially Cisco, CompTIA, Citrix, EMC, HP, Oracle, VMware, Juniper, Check Point, LPI, Nortel, EXIN and so on.

Our Slogan: First Test, First Pass.

Help you to pass any IT Certification exams at the first try.

You can reach us at any of the email addresses listed below.

Sales: sales@lead2pass.com

Support: support@lead2pass.com

Technical Assistance Center: technology@lead2pass.com

Any problems about IT certification or our products, you could rely upon us, we will give you satisfactory answers in 24 hours.

Our Official: <http://www.Lead2pass.com>

A. Answer:

Correct Answer:

Section: (none)

Explanation

Explanation/Reference:



<http://www.gratisexam.com/>