

Cisco 640-864 Exam Bundle

Number: 640-864
Passing Score: 800
Time Limit: 120 min
File Version: 24.8



<http://www.gratisexam.com/>



Cisco 640-864 Exam Bundle

Exam Name: Designing for Cisco Internetwork Solutions 2011

For Full Set of Questions please visit: <http://www.visualexams.com/640-864.htm>

Exam A

QUESTION 1

Which consideration is the most important for the network designer when considering IP routing?

- A. convergence
- B. scalability
- C. on-demand routing
- D. redistribution

Correct Answer: A

Section: (none)

Explanation

Explanation/Reference:

QUESTION 2

You want to gather as much detail as possible during a network audit, to include data time stamping across a large number of interfaces, customized according to interface, with a minimal impact on the network devices themselves. Which tool would you use to meet these requirements?

- A. RMON
- B. SNMPV3
- C. NetFlow
- D. Cisco Discovery Protocol

Correct Answer: C

Section: (none)

Explanation

Explanation/Reference:

QUESTION 3

Which two of these practices are considered to be best practices when designing the access layer for the enterprise campus? (Choose two)

- A. Implement all of the services (QoS, security, STP, and so on) in the access layer, offloading the work from the distribution and core layers.
- B. Always use a Spanning Tree Protocol; preferred is Rapid PVST+.
- C. Use automatic VLAN pruning to prune unused VLANs from trunked interface to avoid broadcast propagation.
- D. Avoid wasted processing by disabling STP where loops are not possible.
- E. Use VTP transparent mode to decrease the potential for operational error

Correct Answer: BE

Section: (none)

Explanation

Explanation/Reference:

QUESTION 4

With deterministic Wireless LAN Controller redundancy design, the different options available to the designer have their own strengths. Which one of these statements is an example of such a strength?

- A. Dynamic load balancing, or salt-and-pepper access point design, avoids the potential impact of oversubscription on aggregate network performance.
- B. N+N redundancy configuration allows logically grouping access points on controllers to minimize intercontroller roaming events.
- C. N+N+1 redundancy configuration has the least impact to system management because all of the controllers are collocated in an NOC or data center
- D. N+1 redundancy configuration uses Layer 3 intercontroller roaming, maintaining traffic on the same subnet for more efficiency.

Correct Answer: B

Section: (none)

Explanation

Explanation/Reference:

QUESTION 5

Which of these statements is true concerning the data center access layer design?



<http://www.gratisexam.com/>

- A. The access layer in the data center is typically built at Layer 3, which allows for better shaping of services across multiple servers.
- B. With Layer 2 access, the default gateway for the servers can be configured at the access or aggregation layer.
- C. A dual-homing NIC requires a VLAN or trunk between the two access switches to support the dual IP address on the two server links to two separate switches.
- D. The access layer is normally not required, as dual homing is standard from the servers to the aggregation layer.

Correct Answer: B

Section: (none)

Explanation

Explanation/Reference:

QUESTION 6

Which two statements about designing the Data Center Access layer are correct? (Choose two)

- A. Multiport NIC servers should each have their own IP address
- B. Layer 3 connectivity should never be used in the access layer
- C. Layer 2 connectivity is primarily implemented in the access layer
- D. Multiport NIC servers should never be used in the access layer
- E. Layer 2 clustering implementation requires servers to be Layer 2 adjacent

Correct Answer: CE

Section: (none)

Explanation

Explanation/Reference:

QUESTION 7

Which IPv6 feature enables routing to distribute connection requests to the nearest content server?

- A. Link-local
- B. Site-local
- C. Anycast
- D. Multicast
- E. Global aggregatable

Correct Answer: C

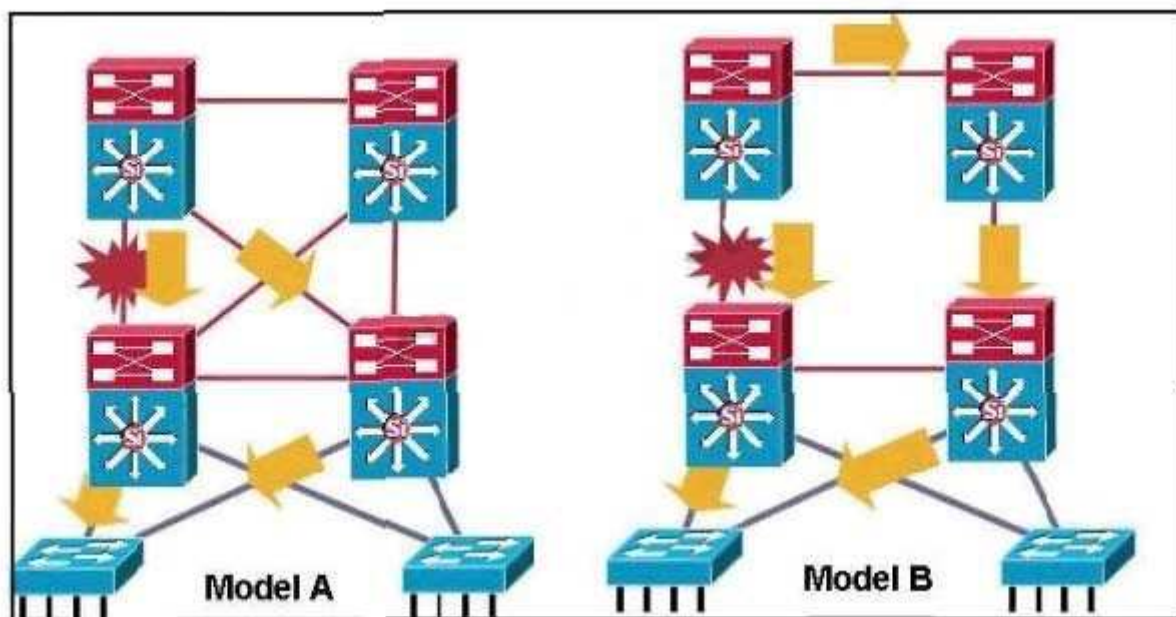
Section: (none)

Explanation

Explanation/Reference:

QUESTION 8

Refer to the exhibit.



Model A is the recommended design for routing between Building Distribution switches and Campus Core switches. Which two statements describe the reasons? (Choose two)

- A. Model A uses timer-based non-deterministic convergence.
- B. Model A uses timer-based, providing fast convergence to the remaining path.
- C. In Model A, a link or box failure does not require routing protocol convergence.
- D. In Model A, the Layer 3 redundant equal cost links support fast convergence.

Correct Answer: CD

Section: (none)

Explanation**Explanation/Reference:****QUESTION 9**

Which one of these statements is true concerning the enterprise data center?

- A. It can be located either at the enterprise campus or at a remote branch.
- B. Remote data center connectivity requirements align with the small office design.
- C. The data center designs will differ substantially depending on whether the location is on campus or remote.
- D. A remote branch with a data center becomes the enterprise campus.

Correct Answer: C

Section: (none)

Explanation**Explanation/Reference:****QUESTION 10**

Which Cisco security management solution provides the means to identify, isolate, and counter security threats to the network?

- A. Adaptive Security Device Manager
- B. Intrusion Prevention Device Manager
- C. Security Device Manager
- D. Cisco Security Manager
- E. Cisco Security Monitoring, Analysis, and Response System

Correct Answer: E

Section: (none)

Explanation**Explanation/Reference:****QUESTION 11**

Which of these is the best routing deployment for a single dedicated link to an ISP for Internet access?

- A. EIGRP
- B. RIP
- C. BGP
- D. Static
- E. OSPF

Correct Answer: D

Section: (none)

Explanation**Explanation/Reference:****QUESTION 12**

In terms of remote office design, which one of these statements is a characteristics only of a small remote

office (up to 50 user), and not of medium or remote offices?

- A. Link redundancy to access layer switches is not possible with an integrated design.
- B. A collapsed access and distribution layer is required.
- C. There are no loops in the network design.
- D. Layer 3 services such as DHCP, firewall, and NAT are provided by enterprise campus.

Correct Answer: C

Section: (none)

Explanation

Explanation/Reference:

QUESTION 13

According to Cisco, which four improvements are the main benefits of the PPDIOO lifecycle approach to network design? (Choose four)

- A. faster ROI
- B. improved business agility
- C. increased network availability
- D. faster access to applications and services
- E. lower total cost of network ownership
- F. better implementation team engagement

Correct Answer: BCDE

Section: (none)

Explanation

Explanation/Reference:

QUESTION 14

With respect to IPv6 addressing, from a design perspective, which of these statements is it important to keep in mind?

- A. IPv6 addressing provides convenience of anycast addressing without any configuration requirements.
- B. IPv6 does not use multicast addressing.
- C. An IPv6 router will not forward packets from one link to other links if the packet has either a link-local source or a link-local destination address.
- D. Dynamic address assignment requires DHCPv6.

Correct Answer: C

Section: (none)

Explanation

Explanation/Reference:

QUESTION 15

When designing the infrastructure protection portion for the enterprise edge, which of these solutions would be the most appropriate solution to consider?

- A. 802.1X
- B. ACLs in the core layer

- C. Cisco Security MARS
- D. AAA

Correct Answer: D

Section: (none)

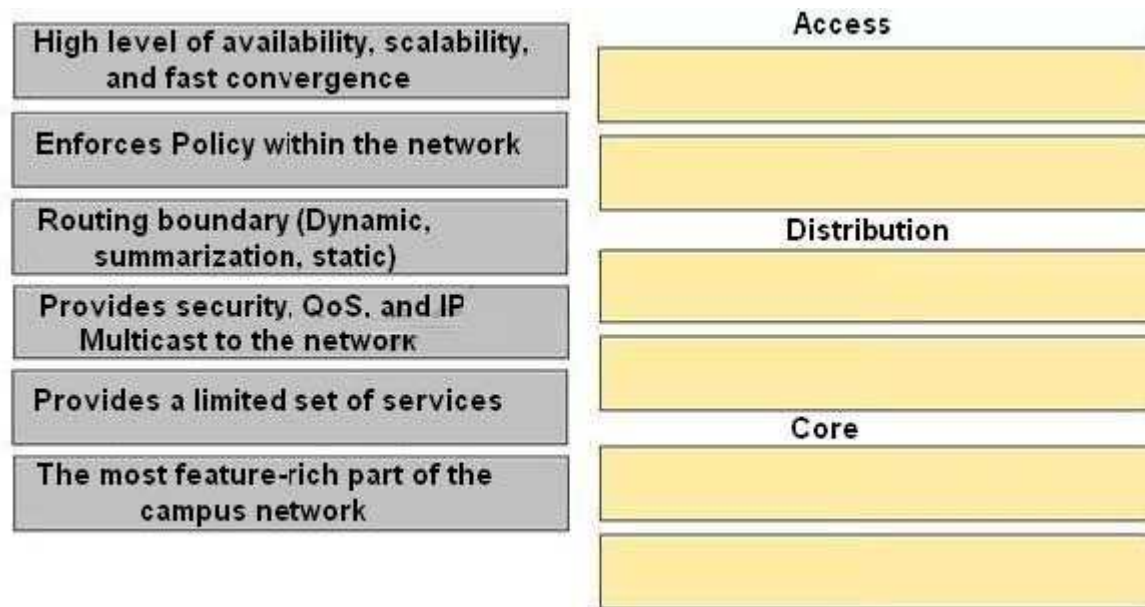
Explanation

Explanation/Reference:

QUESTION 16

DRAG DROP

Drag the characteristics of the traditional campus network on the left to the most appropriate hierarchical network layer on the right.



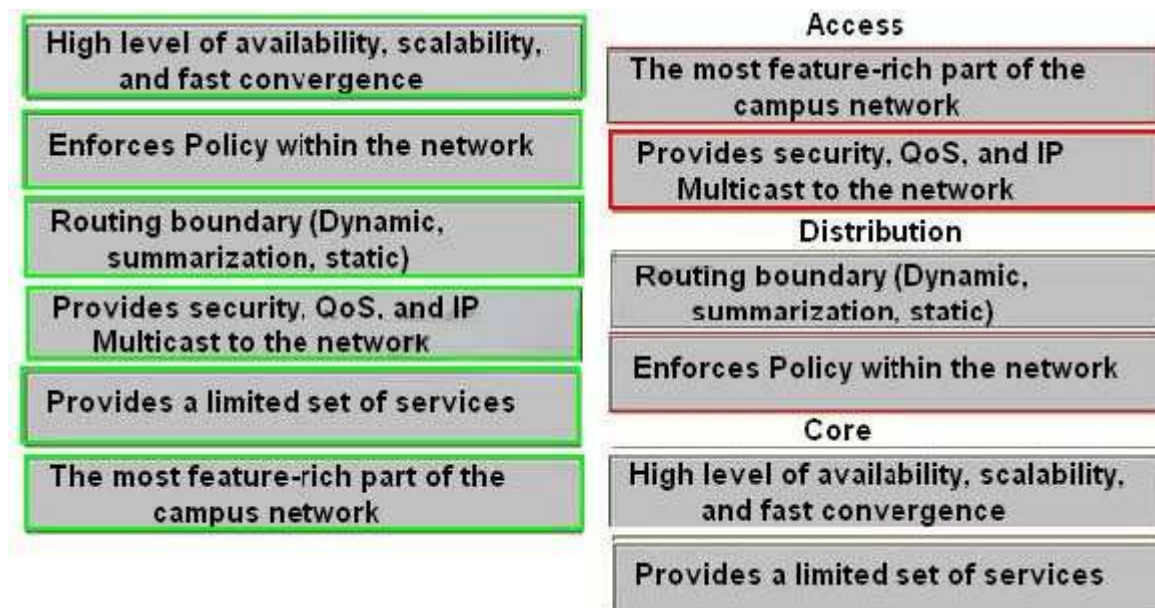
- A.
- B.
- C.
- D.

Correct Answer:

Section: (none)

Explanation

Explanation/Reference:



QUESTION 17

Which two statements best describe an OSPF deployment? (Choose two)

- A. ABR provides automatic classful network boundary summarization.
- B. ABR requires manual configuration for classful network summarization
- C. External routes are propagated into the autonomous system from stub areas via ASBR.
- D. External routes are propagated into the autonomous system from regular areas or NSSA via ASBR.
- E. External routes are propagated into the autonomous system from regular areas or NSSA via ABR.

Correct Answer: BD

Section: (none)

Explanation

Explanation/Reference:

QUESTION 18

A large enterprise requires sensitive information be transmitted over a public infrastructure. It requires confidentiality, integrity, and authenticity. Which security solution best meets these requirements?

- A. Cisco IOS Firewall
- B. Intrusion Prevention
- C. IPSEC
- D. AAA
- E. Traffic Guard Protector
- F. SECURE CONECTIVITY

Correct Answer: C

Section: (none)

Explanation

Explanation/Reference:

QUESTION 19

DRAG DROP

Drag the WAN technology on the left to the most appropriate category on the right.

Frame-Relay	Leased
TDM	
SONET	
MPLS	Shared

- A.
- B.
- C.
- D.

Correct Answer:

Section: (none)

Explanation

Explanation/Reference:

Drag the WAN technology on the left to the most appropriate category on the right.

Frame-Relay	Leased
TDM	TDM
SONET	SONET
MPLS	Shared
	Frame-Relay
	MPLS

QUESTION 20

DRAG DROP

Drag the data center properly on the left to the design aspect on the right it is most apt to affect.

variable of computing load, computing power and memory requirements

disasters, fire suppression and alarm systems

abundant, variable, well organized and easy to maintain

amount of racks, equipment, cabling, people

arrange equipment racks face-to-face or back-to-back

rack servers vs blade serves

Space

Weight Load

Power

Cooling

Cabling

Security

- A.
- B.
- C.
- D.

Correct Answer:

Section: (none)

Explanation

Explanation/Reference:

Drag the data center properly on the left to the design aspect on the right it is most apt to affect.

variable of computing load, computing power and memory requirements

disasters, fire suppression and alarm systems

abundant, variable, well organized and easy to maintain

amount of racks, equipment, cabling, people

arrange equipment racks face-to-face or back-to-back

rack servers vs blade serves

amount of racks, equipment, cabling, people

variable of computing load, computing power and memory requirements

rack servers vs blade serves

arrange equipment racks face-to-face or back-to-back

abundant, variable, well organized and easy to maintain

disasters, fire suppression and alarm systems

QUESTION 21

Layer 2 switching is exclusively used in which Enterprise Campus Module layer?

- A. Server Farm
- B. Campus Core
- C. Building Access
- D. Building Distribution
- E. Internet Connectivity

Correct Answer: C

Section: (none)

Explanation

Explanation/Reference:

QUESTION 22

Which one of these statements is true when considering the design of voice and video services for the enterprise campus network?

- A. Access layer switches should support 802.1Q trunking and 802.1p for Layer 2 CoS packet marking on Layer 2 ports with IP phones connected.
- B. Combining voice and data and a single VLAN simplifies QoS trust boundaries, VLAN access control, and ease of management.
- C. Data devices will also require access to priority queues via packet tagging.
- D. Fixed network delays (serialization, propagation, and so on) are generally unpredictable and more difficult to calculate than variable network delays.

Correct Answer: A

Section: (none)

Explanation

Explanation/Reference:

QUESTION 23

DRAG DROP

Drag the WAN characteristics on the left to the branch office model where it would most likely be used on the right.

	Small Office
Redundant devices	
MPLS Deployment model	
	Medium Office
Redundant Links	
Redundant Links and Devices	
	Large Office
Private WAN deployment	
Internet Deployment Model	

- A.
- B.
- C.
- D.

Correct Answer:

Section: (none)

Explanation

Explanation/Reference:

Drag the WAN characteristics on the left to the branch office model where it would most likely to be used on the right.

	Small Office
Redundant devices	Redundant Links
MPLS Deployment model	Internet Deployment Model
Redundant Links	Medium Office
Redundant Links and Devices	Redundant devices
Private WAN deployment	Private WAN deployment
Internet Deployment Model	Large Office
	Redundant Links and Devices
	MPLS Deployment model

QUESTION 24
DRAG DROP

Drag the technology on the left to the type of enterprise virtualization where it is most likely to be found on the right.

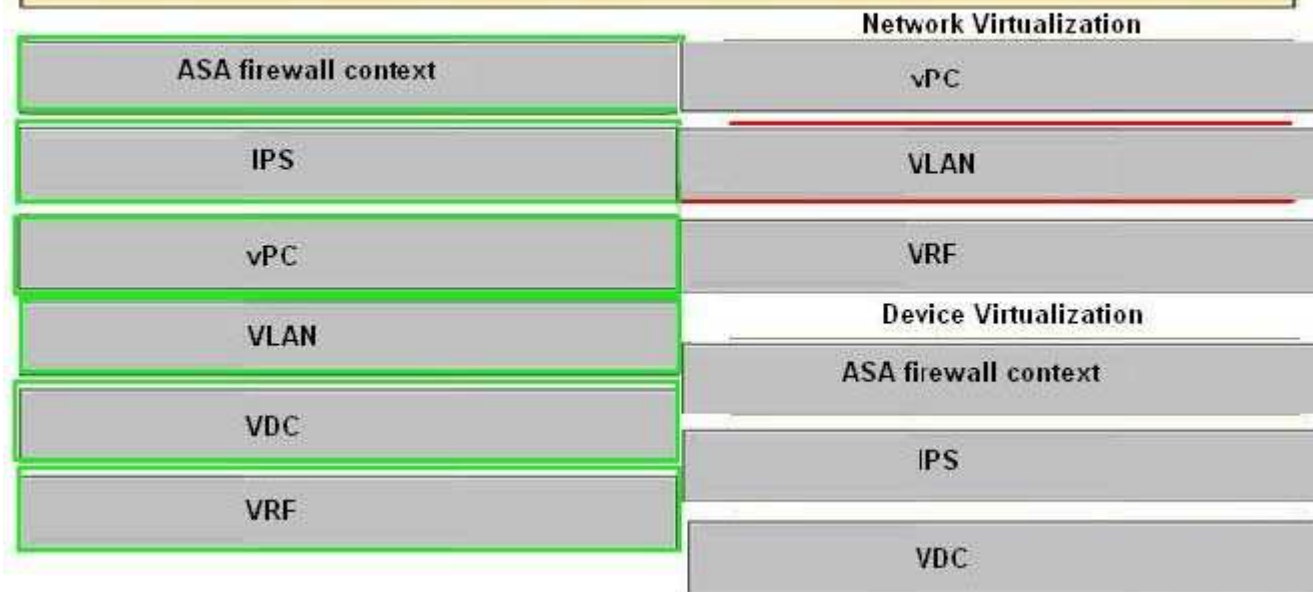
	Network Virtualization
ASA firewall context	
IPS	
vPC	
VLAN	Device Virtualization
VDC	
VRF	

- A.
- B.
- C.
- D.

Correct Answer:
Section: (none)
Explanation

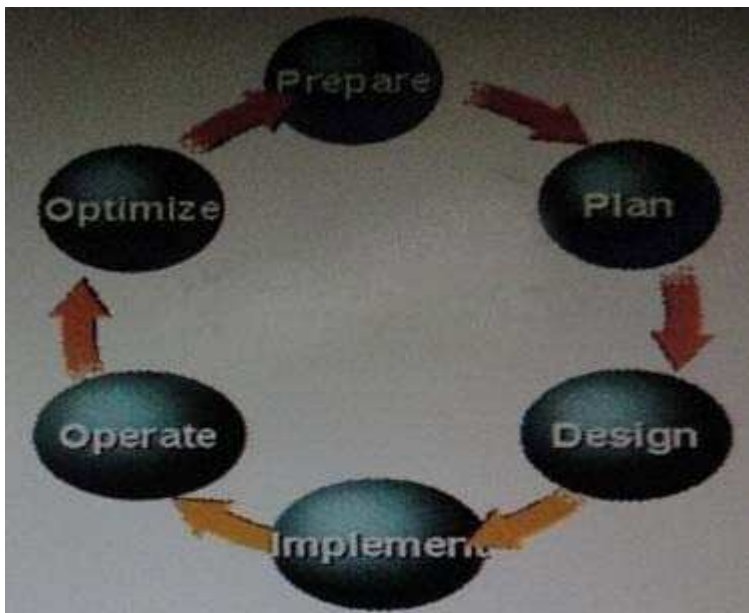
Explanation/Reference:

Drag the technology on the left to the type of enterprise virtualization where it is most likely to be found on the right.



QUESTION 25

Refer to the exhibit.



During which stage of the PPDIOO process are implementation procedures prepared?

- A. Prepare
- B. Plan

- C. Design
- D. Implement
- E. Operate
- F. Optimize

Correct Answer: C

Section: (none)

Explanation

Explanation/Reference:

QUESTION 26

For which network scenario is static routing most appropriate?

- A. parallel WAN links
- B. IPSec VPN
- C. expanding networks
- D. hierarchical routing

Correct Answer: B

Section: (none)

Explanation

Explanation/Reference:

QUESTION 27

Which aspect would most likely be found in the draft design document?

- A. a list of QoS requirements
- B. a note that there are no segments with more than 70 percent broadcast or multicast traffic
- C. the level of redundancy or high availability that currently exists or is required in the network
- D. the list of network infrastructure services which are in use, such as voice and video

Correct Answer: A

Section: (none)

Explanation

Explanation/Reference:

QUESTION 28

Your company's Cisco routers are operating with EIGRP. You need to join networks with an acquisition's heterogeneous routers at 3 sites, operating with EIGRP and OSPF. Which describes the best practice for routing protocol deployment?

- A. apply OSPF throughout both networks
- B. apply one-way redistribution exclusively at each location
- C. apply two way redistribution exclusively at each location
- D. apply two-way redistribution at each location with a route filter at only one location
- E. apply two-way redistribution at each location with a route filter at each location
- F. apply EIGRP with the same autonomous system throughout both networks

Correct Answer: E

Section: (none)

Explanation

Explanation/Reference:

QUESTION 29

Which two link state routing protocols support IPv6 routing? (Choose two)

- A. BGP4+
- B. OSPF
- C. RIPng
- D. EIGRP
- E. IS-IS

Correct Answer: BE

Section: (none)

Explanation

Explanation/Reference:

QUESTION 30

When designing the wireless portion of an enterprise campus network, which one of these statements should serve as a strict guideline?

- A. Wireless controllers should be distributed throughout the building distribution layers
- B. Dynamic controller redundancy, where the access points attempt to join the least loaded controller, is a best-practice approach.
- C. Wireless controllers should be centralized in the core layer
- D. To improve the RF coverage, the controllers of any building should be put in the same mobility group.

Correct Answer: C

Section: (none)

Explanation

Explanation/Reference:

QUESTION 31

Which one of these statements is an example of how trust and identity management solutions should be deployed in the enterprise campus network?

- A. Authentication validation should be deployed as close to the data center as possible.
- B. Use the principle of top-down privilege, which means that each subject should have the privileges that are necessary to perform their defined tasks, as well as all the tasks for those roles below them.
- C. Mixed ACL rules, using combinations of specific sources and destinations, should be applied as close to the source as possible.
- D. For ease of management, practice defense in isolation security mechanisms should be in place one time, in one place.

Correct Answer: C

Section: (none)

Explanation

Explanation/Reference:

QUESTION 32

Which of these is the equation used to derive a 64 Kbps bit rate?

- A. $2 \times 8 \text{ kHz} \times 4\text{-bit code words}$
- B. $8 \text{ kHz} \times 8\text{-bit code words}$
- C. $2 \times 4\text{-bit code words} \times 8 \text{ kHz}$
- D. $2 \times 4 \text{ kHz} \times 8\text{-bit code words}$

Correct Answer: D

Section: (none)

Explanation

Explanation/Reference:

QUESTION 33

Which one of these statements best describes the challenge of the designer when dealing with IP routing?

- A. OSPF supports fast convergence does not require periodic routing table updates, so the optional network design is best simplified with the network as a single backbone area.
- B. Manual summarization is limited to ABRs and ASBRs, therefore the designer must pay strict attention to the EIGRP topology.
- C. EIGRP, as a proprietary protocol, has special challenges when dealing with networks deployed with IPv6.
- D. Effective scalability with OSPF requires the designer to pay strict attention to the hierarchical network structure, localizing topology changes.

Correct Answer: D

Section: (none)

Explanation

Explanation/Reference:

QUESTION 34

Which three terms describe the primary functions of the distribution layer of the campus network design hierarchy? (Chose three)

- A. provides end-user connectivity
- B. provides high speed transport
- C. provides QoS services
- D. enforces security policies
- E. provides WAN connection
- F. connects access devices to the core backbone

Correct Answer: CDF

Section: (none)

Explanation

Explanation/Reference:

QUESTION 35

DataQuirk is a web-based medical transcription company for exotic-animal veterinarians. The company recently

added a third ISP for international business. They are organizing the enterprise network into a fully operational Enterprise Edge.

To which two modules will the three ISPs be directly related? (Choose two.)

- A. PSTN
- B. E-commerce
- C. WAN/MAN
- D. Edge Distribution
- E. internet Connectivity
- F. Remote Access VPN

Correct Answer: BE

Section: (none)

Explanation

Explanation/Reference:

QUESTION 36

Which codec does Cisco recommend for WAN link?

- A. G.711
- B. G 723
- C. G 728
- D. G 729

Correct Answer: D

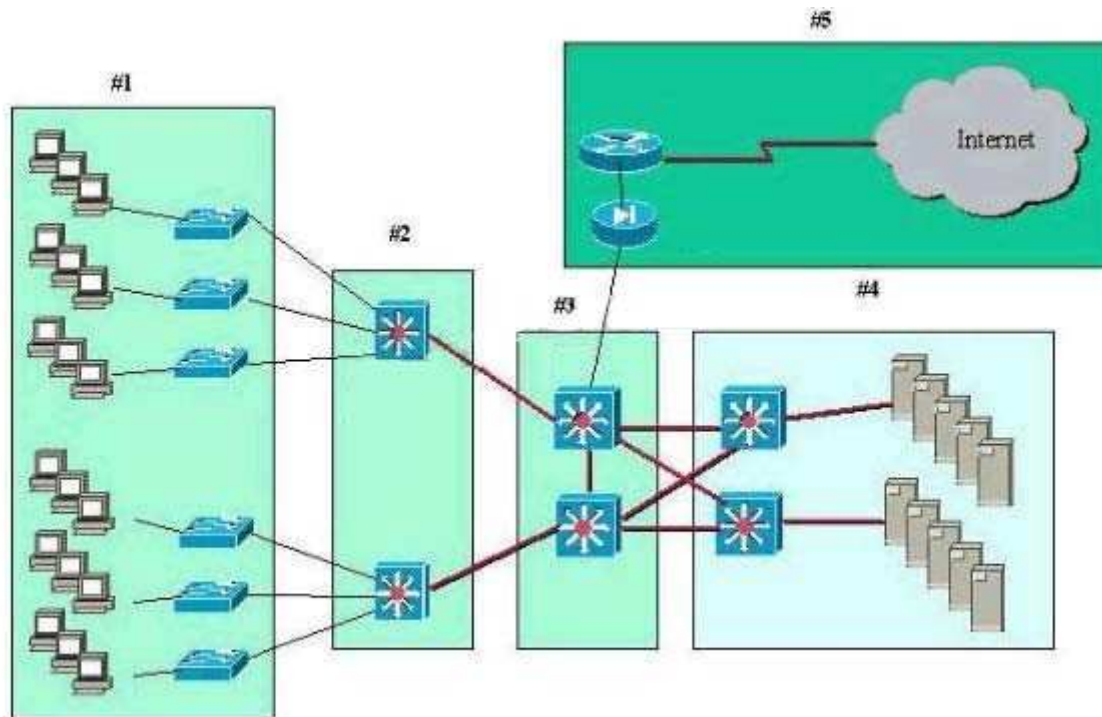
Section: (none)

Explanation

Explanation/Reference:

QUESTION 37

Refer to the exhibit.



A standard, Layer 2 campus network design is pictured. Which numbered box represents the distribution layer?

- A. #1
- B. #3
- C. #4
- D. #2

Correct Answer: D

Section: (none)

Explanation

Explanation/Reference:

QUESTION 38

Which codec does Cisco recommend for WAN links?

- A. G.711
- B. G.723
- C. G.728
- D. G.729

Correct Answer: D

Section: (none)

Explanation

Explanation/Reference:

QUESTION 39

The enterprise campus core layer has requirements that are unique from the distribution and access

layers. Which of the following is true about the core layer?

- A. The core layer provides convergence using Layer 2 and Layer 3 services and features.
- B. The core layer provides high availability to support the distribution layer connections to the enterprise edge.
- C. The campus core layer is optional.
- D. The core layer requires high performance to manage the traffic policing across the backbone.

Correct Answer: C

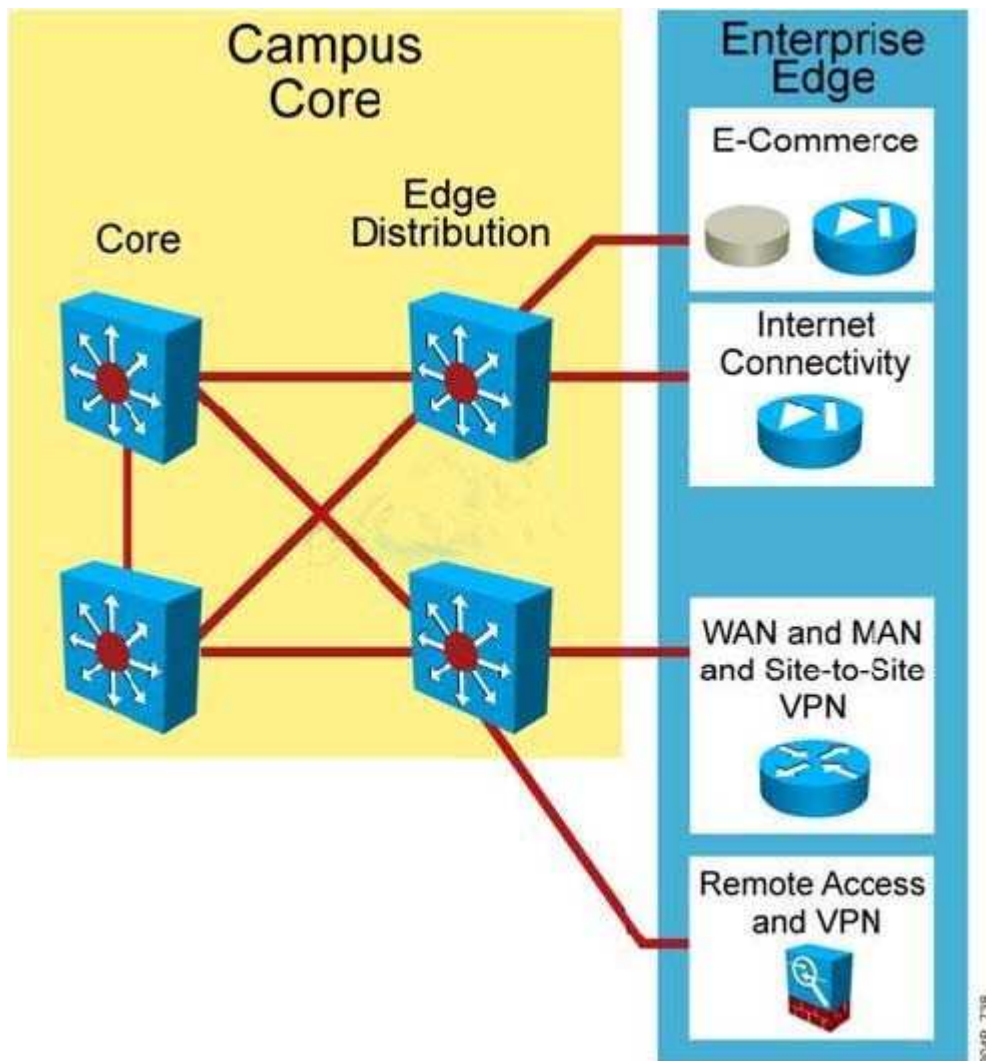
Section: (none)

Explanation

Explanation/Reference:

QUESTION 40

Refer to the exhibit.



Which statement is true concerning enterprise edge distribution switches?

- A. The speed of switching is the most critical feature.
- B. Security requirements are offloaded to the other modules for performance reasons.

- C. Edge distribution switches are only required when using a collapsed core backbone.
- D. Enterprise edge distribution switches are similar to the building distribution layer.

Correct Answer: D

Section: (none)

Explanation

Explanation/Reference:

QUESTION 41

DRAG DROP

Drag the network characteristic on the left to the appropriate Access-Distribution block design on the right.

Fastest network convergence using routing

Layer 2 between Access and Distribution with
Layer 2 link between the Distribution switches

Loop-free topology

Layer 2 between Access and Distribution with
Layer 3 link between the Distribution switches

Uses FHRP

Layer 2 between Access and Distribution with
Layer VSS link between the Distribution switches

VLANs span multiple access layer switches

Layer 3 between Access and Distribution with
Layer 3 link between the Distribution switches

- A.
- B.
- C.
- D.

Correct Answer:

Section: (none)

Explanation

Explanation/Reference:

Drag the network characteristic on the left to the appropriate Access-Distribution block design on the right.

Fastest network convergence using routing

VLANs span multiple access layer switches

Loop-free topology

Uses FHRP

Uses FHRP

Loop-free topology

VLANs span multiple access layer switches

Fastest network convergence using routing

QUESTION 42

RST Corporation is planning to upgrade its current network. The chief technology officer has supplied a topology diagram and an IP addressing scheme of the current network during an interview. RST has been growing at about twenty percent per year. It has been difficult to maintain customer support at a satisfactory level. Therefore, the RST board has met with and directed the chief technology officer to look into network improvements.

Which two items are most relevant in documenting RST's business requirements? (Choose two.)

- A. existing network topologies
- B. network performance requirements
- C. the IP addresses assigned by the ISP
- D. improved customer support requirements
- E. projected growth estimates

Correct Answer: DE

Section: (none)

Explanation

Explanation/Reference:

QUESTION 43

Which two methods are used to enhance VPN performance on Cisco ISRs? (Choose two.)

- A. SSL Acceleration Network Module
- B. VPN Shared Port Adapter
- C. VPN Acceleration Module
- D. high-performance VPN encryption AIM
- E. VPN Service Adapter
- F. built-in hardware-based encryption acceleration

Correct Answer: DF

Section: (none)

Explanation

Explanation/Reference:

QUESTION 44

Which three factors best justify WAN link redundancy between geographically dispersed sites? (Choose three.)

- A. high expense of transmitting data
- B. important traffic flows
- C. excessive packet transmission rate
- D. uncertain reliability
- E. high link utilization
- F. lack of speed

Correct Answer: BDF

Section: (none)

Explanation

Explanation/Reference:

QUESTION 45

Which three pieces of information should be documented for each step of each phase in a design implementation plan? (Choose three.)

- A. easy guidelines in case of failure
- B. estimated rollback time in case of failure
- C. simple implementation guidelines
- D. estimated implementation time
- E. design document references
- F. step description

Correct Answer: DEF

Section: (none)

Explanation

Explanation/Reference:

QUESTION 46

The topology map in the draft design document should cover which two layers of the OSI model? (Choose two.)

- A. session
- B. data link
- C. transport
- D. application
- E. physical
- F. network

Correct Answer: EF

Section: (none)

Explanation

Explanation/Reference:

QUESTION 47

What are the two most likely driving forces motivating businesses to integrate voice and data into converged networks? (Choose two.)

- A. Voice networks cannot carry data unless the PRI circuits aggregate the BRI circuits.
- B. Their PSTNs cannot deploy features quickly enough.
- C. Data, voice, and video cannot converge on their current PSTN structures.
- D. Voice has become the primary traffic on networks.
- E. WAN costs can be reduced by migrating to converged networks.

Correct Answer: CE

Section: (none)

Explanation

Explanation/Reference:

QUESTION 48

Which three mechanisms are required to deploy QoS on an IP WAN? (Choose three.)

- A. queuing and scheduling
- B. Call Admission Control
- C. traffic shaping
- D. link efficiency techniques
- E. traffic classification
- F. bandwidth provisioning

Correct Answer: CDE

Section: (none)

Explanation

Explanation/Reference:

QUESTION 49

Which two statements best describe the implementation of Overlay VPN connectivity for remote access in the Enterprise Edge WAN module? (Choose two.)

- A. Bandwidth is provisioned on a site-to-site basis.
- B. It uses dedicated point-to-point links.
- C. Optimum routing between customer sites requires a full mesh of virtual circuits.
- D. It must use Layer 2 labels to forward packets
- E. The ISP actively participates in customer routing.

Correct Answer: AC

Section: (none)

Explanation

Explanation/Reference:

QUESTION 50
DRAG DROP

Click and drag the QoS feature type on the left to the category of QoS mechanism on the right.

WRED
CAR
ACLs
LFI
LLQ

classification
congestion
traffic
congestion
li

- A.
- B.
- C.
- D.

Correct Answer:
Section: (none)
Explanation

Explanation/Reference:

Click and drag the QoS feature type on the left to the category of QoS mechanism on the right.

WRED
CAR
ACLs
LFI
LLQ

QUESTION 51

After a period of rapid growth, FloCzar Boats is seeking better network management tools. Managers have

developed this needs list:

Move from static to dynamic device information.

Gain information to assist in long-term trend analysis.

Concentrate on Layer 4 monitoring.

Which management protocol will most help FloCzar achieve its goals?

- A. RMON2
- B. SNMP
- C. NetFlow
- D. RMON
- E. Cisco Discovery Protocol

Correct Answer: A

Section: (none)

Explanation

Explanation/Reference:

QUESTION 52

A very large organization has received its IPv6 address range from its Internet Service Provider and intends to use only IPv6 addresses internally. Employees will access the Internet using port address translation. What is a requirement for their DNS servers?

- A. There are no changes required to their DNS servers.
- B. Their DNS servers need to support only IPv6 addresses.
- C. Their DNS servers need to support only IPv4 addresses.
- D. They need additional DNS servers in their network just for IPv6 addresses.
- E. They no longer need DNS servers.
- F. Their DNS servers need to support both IPv4 and IPv6 addresses.

Correct Answer: F

Section: (none)

Explanation

Explanation/Reference:

QUESTION 53

Which two statements represent advantages that the top-down network design process has over the bottom-up network design process? (Choose two.)

- A. utilizes previous experience
- B. identifies appropriate technologies first
- C. is able to provide the big picture
- D. takes less time to design a network
- E. provides a design for current and future development

Correct Answer: CE

Section: (none)

Explanation

Explanation/Reference:

QUESTION 54

Which three security measures can be used to mitigate DoS attacks that are directed at exposed hosts within the E-Commerce module? (Choose three.)

- A. Use NIDSs and HIPSs to detect signs of attack and to identify potentially successful breaches.
- B. Partition the exposed hosts into a separate LAN or VLAN.
- C. Use LAN switch VTP pruning to separate hosts on the same segment.
- D. Use a VPN concentrator (IPSec) to protect and verify each connection to the exposed host or hosts.
- E. Use firewalls to block all unnecessary connections to the exposed hosts.

Correct Answer: ABE

Section: (none)

Explanation

Explanation/Reference:

QUESTION 55

Which technology can ensure data confidentiality, data integrity, and authentication across a public IP network?

- A. VSANs
- B. VPDNs
- C. VLANs
- D. GRE
- E. IPsec

Correct Answer: E

Section: (none)

Explanation

Explanation/Reference:

QUESTION 56

Which statement best describes Call Admission Control?

- A. It extends QoS capabilities to protect voice from excessive data traffic.
- B. It protects voice from voice.
- C. It provides endpoint registration control.
- D. It provides endpoint bandwidth control.

Correct Answer: B

Section: (none)

Explanation

Explanation/Reference:

QUESTION 57

A customer wishes to implement VoIP using centralized call-processing. In addition, the customer wishes to ice quality and good bandwidth utilization. Which codec would you suggest?

- A. G.711
- B. G.729
- C. G.726

D. G.723.1

Correct Answer: B

Section: (none)

Explanation

Explanation/Reference:

QUESTION 58

Which three sources does a network designer use to collect information for characterizing an existing network? (Choose three.)

- A. server statistics
- B. network audit
- C. traffic analysis
- D. visual inventory
- E. staff input

Correct Answer: BCE

Section: (none)

Explanation

Explanation/Reference:

QUESTION 59

Which of the following Cisco router services performs network traffic analysis to assist in documenting a customer's existing network?

- A. NetMon
- B. MRTG
- C. SNMP MIB compiler
- D. NetFlow

Correct Answer: D

Section: (none)

Explanation

Explanation/Reference:

QUESTION 60

Lightweight access points are being deployed in remote locations where others are already operational. The new access points are in a separate IP subnet from the wireless controller. OTAP has not been enabled at any locations. Which two methods can the AP use to locate a wireless controller? (Choose two.)

- A. NV-RAM IP address
- B. master
- C. primary, secondary, tertiary
- D. DHCP
- E. local subnet broadcast
- F. DNS

Correct Answer: DF

Section: (none)

Explanation

Explanation/Reference:

QUESTION 61

Which Cisco security solution can quarantine and prevent non-compliant end stations from accessing the network until they achieve security policy compliance?

- A. Cisco Security Monitoring, Analysis, and Response System
- B. Adaptive Security Appliance
- C. Network Admission Control
- D. Network Intrusion Prevention System
- E. Cisco Secure Connectivity
- F. Access Control Server

Correct Answer: C

Section: (none)

Explanation

Explanation/Reference:

QUESTION 62

A Cisco security mechanism has the following attributes:

- It is a sensor appliance
 - It searches for potential attacks by capturing and analyzing traffic
 - It is a "purpose-built device"
 - It is installed passively
 - It introduces no delay or overhead
- Which Cisco security mechanism is this?

- A. NIDS
- B. PIX
- C. IKE
- D. HIPS
- E. HMAC

Correct Answer: A

Section: (none)

Explanation

Explanation/Reference:

QUESTION 63

Which two routing protocols operate over NBMA point-to-multipoint networks without the use of point-to-point subinterfaces? (Choose two.)

- A. OSPF
- B. EIGRP
- C. RIPv2
- D. RIPv1
- E. IGRP
- F. IS-IS

Correct Answer: AB

Section: (none)

Explanation

Explanation/Reference:

QUESTION 64

Which statement accurately describes one difference between a small office and medium office topology?

- A. Medium offices commonly use integrated route and switching platforms.
- B. Medium offices use integrated 10/100/1000 interfaces as Layer 2 trunks.
- C. Medium offices use external access switches to support LAN connectivity.
- D. Small offices commonly use Rapid PVST+ for Layer 3 deployments.

Correct Answer: C

Section: (none)

Explanation

Explanation/Reference:

QUESTION 65

You design a network with the following network addresses:

192.168.168.0

192.168.169.0

192.168.170.0

192.168.171.0

192.168.172.0

192.168.173.0

192.168.174.0

192.168.175.0

Which route address is the best summary of these network addresses?

- A. 192.168.0.0/16
- B. 192.168.168.0/21
- C. 192.168.0.0/24
- D. 192.168.171.128/3
- E. 192.168.175.0/3
- F. None of the above

Correct Answer: B

Section: (none)

Explanation

Explanation/Reference:

QUESTION 66

Which two capabilities of NetFlow accounting assist designers with network planning? (Choose two.)

- A. the monitoring of processor time on network devices
- B. the calculation of packet and byte counts of network traffic
- C. the decoding and analyzing of packets
- D. the presentation of a time-based view of application usage on the network

E. the monitoring of user network utilization

Correct Answer: BE

Section: (none)

Explanation

Explanation/Reference:

QUESTION 67

What is the benefit of deploying a gatekeeper in an H.323 IP telephony network?

- A. provides spatial redundancy through the use of HSRP
- B. provides load balancing via GUP when alternate gatekeepers are deployed
- C. reduces configuration complexity by centralizing the dial plan
- D. increases redundancy by allowing each gateway to maintain a copy of the dial plan

Correct Answer: C

Section: (none)

Explanation

Explanation/Reference:

QUESTION 68

Which type of trunk is required in order to connect a fax machine to a PBX?

- A. intra-office
- B. Foreign Exchange Office
- C. central office
- D. Foreign Exchange Station
- E. inter-office

Correct Answer: D

Section: (none)

Explanation

Explanation/Reference:

QUESTION 69

Which two of these represent a best practice implementation of a Split MAC LWAPP deployment in a Cisco Unified Wireless Network? (Choose two.)

- A. Each wireless client authentication type maps to a unique SSID which in turn maps to a unique VLAN.
- B. 802.1Q trunking extends from the wired infrastructure to the access point for translation into SSID(s).
- C. 802.1Q trunking extends from the wired infrastructure to a wireless LAN controller for translation into SSID(s).
- D. Each wireless client authentication type maps to a shared SSID which in turn maps to a common shared VLAN.
- E. Each wireless client authentication type maps to a unique SSID which in turn maps to a common shared VLAN.
- F. 802.1Q trunking extends from the wired infrastructure to a wireless LAN controller. Then the 802.1Q packet is encapsulated in LWAPP and sent to the access point for transmission over the SSID(s).

Correct Answer: AC

Section: (none)

Explanation

Explanation/Reference:

QUESTION 70

Which two statements best describe intradomain route summarization? (Choose two.)

- A. EIGRP and OSPF must be manually configured to summarize at non-classful boundaries.
- B. EIGRP and OSPF automatically summarize at classful network boundaries.
- C. OSPF and RIP automatically summarize at classful network boundaries.
- D. EIGRP and RIP automatically summarize at classful network boundaries.
- E. EIGRP and OSPF automatically summarize at non-classful boundaries.

Correct Answer: AD

Section: (none)

Explanation

Explanation/Reference:

QUESTION 71

A network design document is being prepared for a customer. Which three network design elements must be included? (Choose three.)

- A. proof of concept
- B. data sources
- C. design details
- D. organizational policies
- E. implementation plan

Correct Answer: ACE

Section: (none)

Explanation

Explanation/Reference:

QUESTION 72

Which two techniques can reduce voice packet transfer delay across a link of less than 512 kbps? (Choose two.)

- A. deploy LFI
- B. increase link bandwidth
- C. extend the trust boundary
- D. deploy software compression
- E. increase queue depth

Correct Answer: AB

Section: (none)

Explanation

Explanation/Reference:

QUESTION 73

Your company uses OSPF for internal routing. The company will be connected to VendorA via a single dedicated link and to VendorB via redundant dedicated links. Both vendors also use OSPF for internal routing. Which of the following deployments describes the best intra-domain routing practice in this

situation?

- A. Redistribute the routes on each link between your company and the vendors to a shared EIGRP routing protocol.
- B. Use IBGP to reach VendorA and EBGP to reach VendorB.
- C. Use static routes to reach VendorA and EBGP to reach VendorB.
- D. Use static routes to reach both VendorA and VendorB.
- E. Connect your company to both VendorA and VendorB using existing OSPF.

Correct Answer: C

Section: (none)

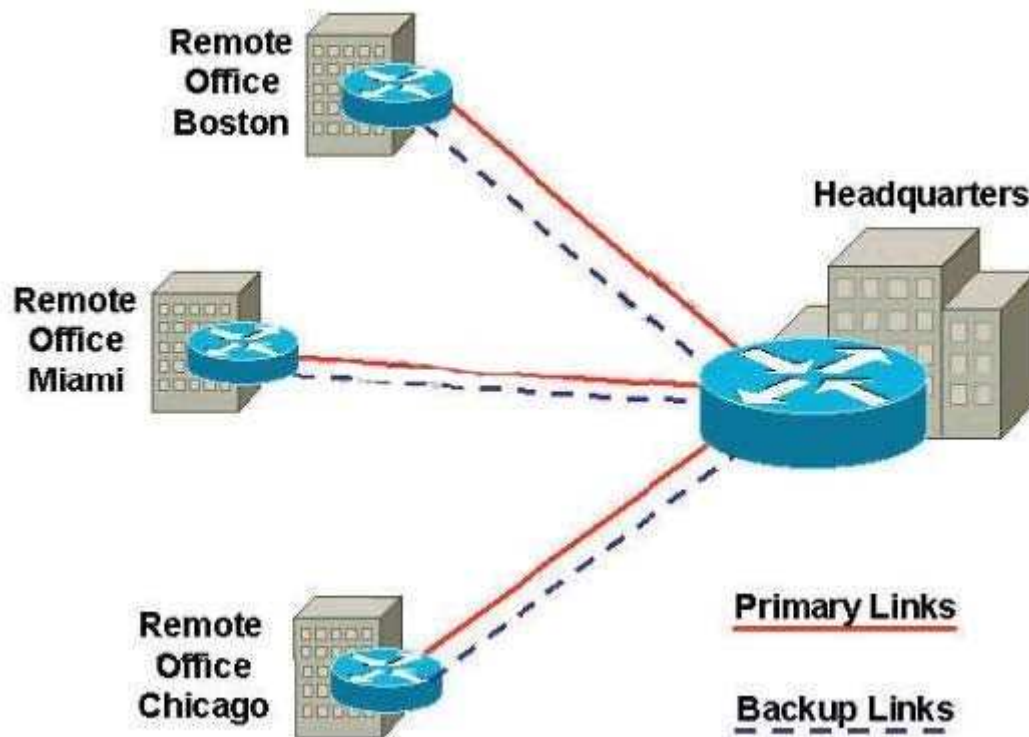
Explanation

Explanation/Reference:

QUESTION 74

Refer to the exhibit. All primary links are T1s. The customer wants to have a backup to each remote office from the Headquarters office.

Which two types of backup links would be viable solutions? (Choose two.)



- A. dial backup routing
- B. shadow SVC
- C. permanent secondary WAN link

D. VPDN

Correct Answer: AC

Section: (none)

Explanation

Explanation/Reference:

QUESTION 75

A Cisco SONA architecture layer is described as follows:

The layer's IT resources are interconnected across a converged network foundation. The layer's IT resources include servers, storage, and clients. The layer represents how resources exist across the network. The customer objective for the layer is to have anywhere/anytime connectivity.

Which Cisco SONA architecture layer is being described?

- A. Application
- B. Integrated Transport
- C. Physical
- D. Networked Infrastructure
- E. Interactive Services

Correct Answer: D

Section: (none)

Explanation

Explanation/Reference:

QUESTION 76

Which information should a network summary report identify?

- A. actions needed to support the existing network
- B. customer requirements
- C. new network features
- D. customer requirement modifications
- E. actions needed to support existing network features
- F. infrastructure shortcomings

Correct Answer: F

Section: (none)

Explanation

Explanation/Reference:

QUESTION 77

Given a VoIP network with these attributes:

CodeC. G.711

WAN bandwidthH. 768Kbps

Packet Header: 6 bytes

PayloadD. 160 bytes

CRTP: No How many calls can be made?

- A. 7 calls
- B. 13 calls

- C. 8 calls
- D. 9 calls
- E. 11 calls

Correct Answer: E

Section: (none)

Explanation

Explanation/Reference:

QUESTION 78

What are three valid methods of gathering information about an existing data network? (Choose three.)

- A. Use organizational input.
- B. Analyze the user-mapping of a running application.
- C. Perform a traffic analysis.
- D. Perform a packet-level audit to verify carrier service guarantees.
- E. Use reports that analyze the metrics of the customer's existing network.
- F. Perform a network audit to gather more detail about the network.

Correct Answer: CEF

Section: (none)

Explanation

Explanation/Reference:

QUESTION 79

Which two of these are required for wireless client mobility deployment when using a Cisco Unified Wireless Network? (Choose two.)

- A. matching RF power
- B. matching security
- C. assigned master controller
- D. matching mobility group name
- E. matching RF channel
- F. matching RF group name

Correct Answer: BD

Section: (none)

Explanation

Explanation/Reference:

QUESTION 80

In the Cisco branch office design, what categorizes an office as large?

- A. between 50 and 100 users and a single-tier design
- B. between 100 and 200 users and a three-tier design
- C. between 50 and 100 users and a three-tier design
- D. over 200 users and a two-tier design
- E. between 100 and 200 users and a two-tier design

Correct Answer: B

Section: (none)

Explanation

Explanation/Reference:

QUESTION 81

A company is designing a worldwide IPv6 network with duplicated file servers at multiple locations. Each file server contains identical reference information. Which IPv6 address type would be used to allow each end station to send a request to the nearest file server using the same destination address, regardless of the location of that end station?

- A. broadcast
- B. multicast
- C. anycast
- D. unicast

Correct Answer: C

Section: (none)

Explanation

Explanation/Reference:

QUESTION 82

When designing using the Cisco Enterprise Architecture, in which Enterprise Campus layer do the Enterprise Edge and Enterprise WAN modules establish their connection?

- A. Building Access
- B. Building Distribution
- C. Campus Core
- D. Enterprise Branch
- E. Enterprise Data Center

Correct Answer: C

Section: (none)

Explanation

Explanation/Reference:

QUESTION 83

Which three of these describe the best practice for Cisco wireless outdoor Mesh network deployment? (Choose three.)

- A. mesh hop counts of 4 or fewer
- B. RAP implemented with 20 or fewer MAP nodes
- C. client access via 802.11a and backhaul with 802.11b/g
- D. client access via 802.11b/g and backhaul with 802.11a
- E. mesh hop counts of 8 to 4
- F. RAP implemented with 20 to 32 MAP nodes

Correct Answer: ABD

Section: (none)

Explanation

Explanation/Reference:

QUESTION 84

The Cisco Data Center Network Architecture comprises which two Cisco SONA layers? (Choose two.)

- A. Collaboration Applications
- B. WAN/Internet
- C. Interactive Services
- D. Network Infrastructure
- E. Business Applications

Correct Answer: CD

Section: (none)

Explanation

Explanation/Reference:

QUESTION 85

Which two of these are scalability benefits of designing a network that utilizes VPNs? (Choose two.)

- A. reduces dial infrastructure expenditures
- B. reduces the number of physical connections
- C. allows networks to be set up and restructured quickly
- D. simplifies the underlying structure of a customer WAN
- E. extends the network to remote users

Correct Answer: BD

Section: (none)

Explanation

Explanation/Reference:

QUESTION 86

You are designing a small branch office that requires these attributes:

support for 60 users

the growth capacity to add another 15 users soon

redundant access

higher bandwidth between the Layer 2 switch and routing to the WAN Which branch office topology or technology must be used?

- A. EtherChannel
- B. loop-free
- C. three-tier
- D. two-tier
- E. integrated routing and switching

Correct Answer: D

Section: (none)

Explanation

Explanation/Reference:

QUESTION 87

Western Associated News Agency recently acquired a large news organization with several sites, which will allow it to expand to worldwide markets. The new acquisition includes these connectivity technologies:

Frame Relay

ATM

SONET

cable

DSL

wireless

From a Layer 1 viewpoint, which Enterprise Edge module will be most affected?

- A. Internet Connectivity
- B. E-Commerce
- C. PSTN
- D. Edge Distribution
- E. ISP
- F. WAN/MAN

Correct Answer: F

Section: (none)

Explanation

Explanation/Reference:

QUESTION 88

DRAG DROP

Match the bandwidth usage optimization technique on the left with its definition on the right.

queuing

limits the number of
acknowledgements

window size

reduces data size
optimizing the

traffic policing

allows network ad
varying demands

data compression

discards packets or
(such as

- A.
- B.
- C.
- D.

Correct Answer:

Section: (none)

Explanation

Explanation/Reference:

Match the bandwidth usage optimization technique on the left with its definition on the right.

queuing

window size

traffic policing

data compression

data

tra

QUESTION 89

Which two implementation plan principles best describe how to deal with potential failures? (Choose two.)

- A. A table of failure points, rollback steps, and estimated rollback times.
- B. A good implementation plan.
- C. A test should be included at every step.
- D. A detailed rollback procedure for each implementation step.
- E. A successful test network test.

Correct Answer: CD

Section: (none)

Explanation

Explanation/Reference:

QUESTION 90

Refer to the exhibit. You are documenting the existing network of a customer with a large installed Cisco network. The routers listed are in use on the network.

Which two additional pieces of information would be the most valuable in completing your documentation of these routers? (Choose two.)

435 Cisco model 2800 routers
129 Cisco model 3800 routers
10 Cisco model 7500 routers

- A. software revisions
- B. interface options
- C. power requirements
- D. error statistics
- E. management protocols

Correct Answer: AB

Section: (none)

Explanation

Explanation/Reference:

QUESTION 91

Which of these is the next step after the design phase in the PPDIOO process?

- A. Develop a high-level migration plan.
- B. Develop the implementation plan in as much detail as possible.
- C. Create a pilot or a prototype network.
- D. Identify which network management protocol will be used for which function.
- E. Order the equipment.

Correct Answer: B

Section: (none)

Explanation

Explanation/Reference:

QUESTION 92

You are designing IPv6 into an existing IPv4 network. Which two strategies can you use to allow both address schemes to coexist, thus facilitating migration? (Choose two)

- A. Translate one protocol into the other
- B. Redistribute between IPv6-capable and non-IPv6-capable routing protocols
- C. Encapsulate IPv6 packets within IPv4 packets
- D. Bridge between the IPv6 and IPv4 networks
- E. Enable anycast capability in the routing protocol

Correct Answer: AC

Section: (none)

Explanation

Explanation/Reference:

QUESTION 93

Which two statements best describe Cisco Wireless LAN Guest Access in a Cisco Unified Wireless Network? (Choose two.)

- A. Dedicated guest VLANs are only extended to the wireless controllers in the network to ensure path isolation.
- B. Guest tunnels have limitations on which wireless controllers can originate the tunnel.
- C. Dedicated guest VLANs are extended throughout the network to the access points for path isolation.
- D. Guest tunnels can originate and terminate on any wireless controller platform.
- E. Guest tunnels have limitations on which wireless controllers can terminate the tunnel.
- F. Dedicated guest access in the DMZ extends from the origination to the termination controllers without dedicated guest VLANs.

Correct Answer: EF

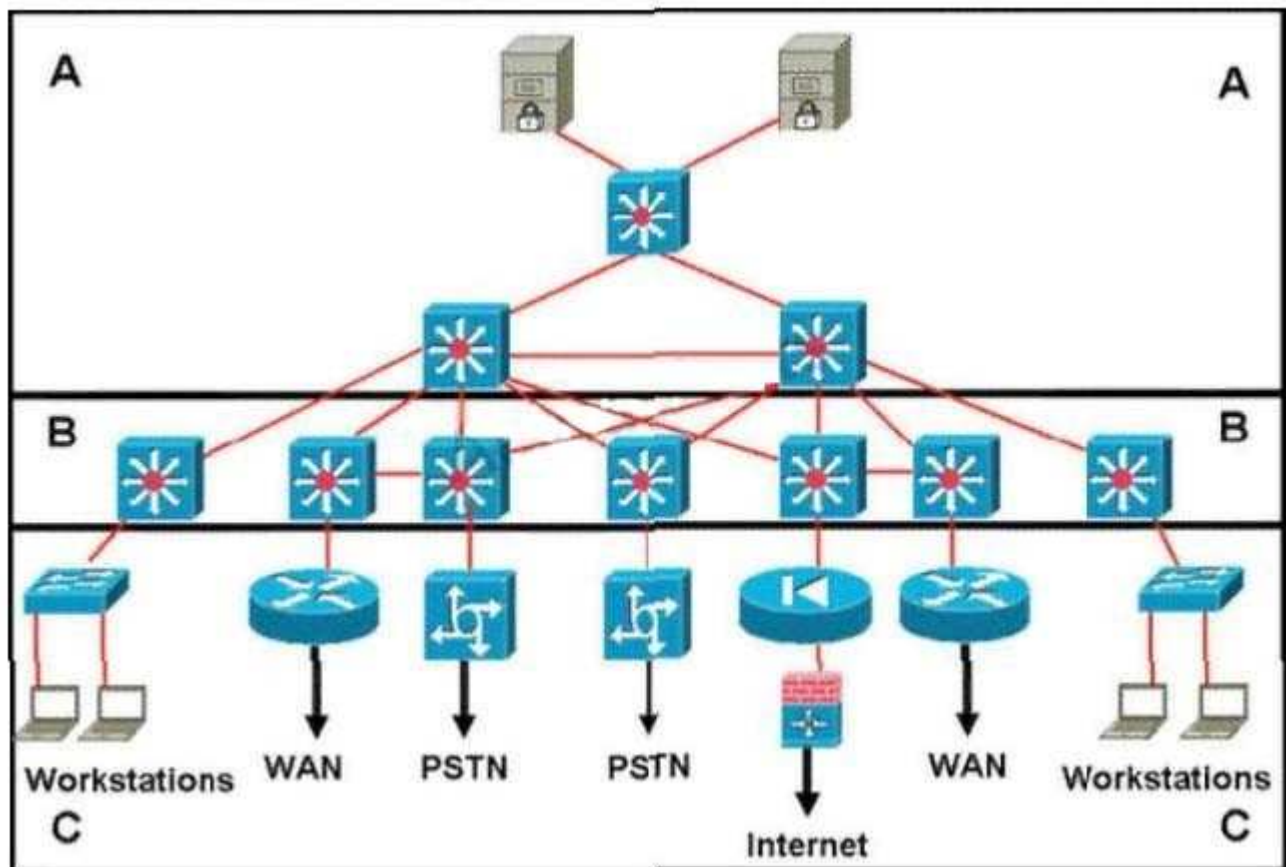
Section: (none)

Explanation

Explanation/Reference:

QUESTION 94

Refer to the exhibit. Which statement accurately represents the characteristics of the core layer in this design?



- A. Access lists should be used in the core to perform packet manipulation.
- B. QoS should be performed only in the core.
- C. Load balancing should never be implemented or used in the core.

- D. It is acceptable to use a partial mesh in the core if it is connected to each device by multiple paths.
- E. Policy-based traffic control is implemented in the core to enable prioritization, ensuring the best performance for all time-critical applications.

Correct Answer: D

Section: (none)

Explanation

Explanation/Reference:

QUESTION 95

What is the administrative distance of eBGP routes?

- A. 200
- B. 100
- C. 20
- D. 110

Correct Answer: C

Section: (none)

Explanation

Explanation/Reference:

QUESTION 96

Which name is for the Cisco product that provides centralized, policy-based security management?

- A. IDS
- B. Out-of-band management
- C. AAA
- D. CSPM

Correct Answer: D

Section: (none)

Explanation

Explanation/Reference:

QUESTION 97

DRAG DROP

Select from these	Place here	Description
Agent	Place here	periodically collects object information
MIB	Place here	management transport mechanism
SNMP	Place here	generate traps of events
Manager	Place here	store information about network objects

- A.
- B.
- C.
- D.

Correct Answer:

Section: (none)

Explanation

Explanation/Reference:

Select from these	Place here	Description
Agent	Manager	periodically collects object information
MIB	SNMP	management transport mechanism
SNMP	Agent	generate traps of events
Manager	MIB	store information about network objects

QUESTION 98

ISDN is short for Integrated Services Digital Network. Under what category of WAN technologies does ISDN belong?

- A. Cell-switched
- B. Circuit-switched
- C. Packet-switched
- D. Leased lines

Correct Answer: B

Section: (none)

Explanation

Explanation/Reference:

QUESTION 99

Which address type is 225.10.1.1?

- A. Unicast
- B. Anycast
- C. Multicast
- D. Broadcast

Correct Answer: C

Section: (none)

Explanation

Explanation/Reference:

QUESTION 100

A wireless LAN or WLAN is a wireless local area network, which is the linking of two or more computers or devices without using wires. How are wireless LANs identified?



<http://www.gratisexam.com/>

- A. Service Set Identifier (SSID)
- B. Internet Group Management Protocol (IGMP)
- C. IP network
- D. Wired Equivalent Privacy (WEP) key

Correct Answer: A

Section: (none)

Explanation

Explanation/Reference:

QUESTION 101

Which IGP protocol is a common choice to EIGRP and OSPF as a routing protocol for large networks?

- A. RIPv2
- B. IS-IS
- C. IGRP
- D. OSPFv2

Correct Answer: B

Section: (none)

Explanation

Explanation/Reference:

QUESTION 102

Which routing protocol is classful?

- A. Intermediate System-to-Intermediate System (IS-IS) and OSPF
- B. Routing Information Protocol Version 1 (RIPv1) and RIPv2
- C. IGRP and RIPv1
- D. Enhanced Interior Gateway Routing Protocol (EIGRP) and Open Shortest Path First (OSPF)

Correct Answer: C

Section: (none)

Explanation

Explanation/Reference:

QUESTION 103

Which types of communicating devices compose RMON architecture? (Choose two)

- A. Router
- B. Switch
- C. Management station
- D. Monitor

Correct Answer: CD

Section: (none)

Explanation

Explanation/Reference:

QUESTION 104

Define some of the activities, tools, and techniques used in today's network-design process.(Choose three.)

- A. Analyzing network traffic
- B. Simulation of network traffic
- C. Network auditing
- D. Filtering incoming network traffic

Correct Answer: ABC

Section: (none)

Explanation

Explanation/Reference:

QUESTION 105

Which type of DSL does residential service use?

- A. VDSL
- B. SDSL
- C. IDSL
- D. ADSL

Correct Answer: D

Section: (none)

Explanation

Explanation/Reference:

QUESTION 106

Which item is not a part of the process recommended by Cisco for WAN designs?

- A. Characterize the existing network.
- B. Analyze customer requirements.
- C. Configure deployed services.
- D. Design the new WAN topology.

Correct Answer: C

Section: (none)

Explanation

Explanation/Reference:

QUESTION 107

What does Compressed Real-Time Transport Protocol (CRTP) compress?

- A. RTP, TCP, and IP headers
- B. RTP headers
- C. RTP, User Datagram Protocol (UDP), and IP headers
- D. Real-Time Transport Control Protocol (RTCP) headers

Correct Answer: C

Section: (none)

Explanation

Explanation/Reference:

QUESTION 108

Which mechanism will be often used by service providers to define their service offerings and to differentiate their services from their competitors?

- A. SLM
- B. SLA
- C. SLC
- D. SAA

Correct Answer: B

Section: (none)

Explanation

Explanation/Reference:

QUESTION 109

Which standard language will be used by SNMP to define the device information to be stored?

- A. SNMPv4
- B. ASN.1
- C. MIBs
- D. Agents

Correct Answer: B

Section: (none)

Explanation

Explanation/Reference:

QUESTION 110

Which WAN scenario might be appropriate for queuing solutions?

- A. A newly implemented WAN connection has yet to demonstrate sufficient WAN statistics for congestion-level tracking.
- B. A WAN connection features consistent congestion problems, and data transfers often suffer.
- C. A WAN connection is rarely congested, and data transfers never suffer.
- D. A WAN connection features occasional periods of congestion, and data transfers have occasionally suffered as a result.

Correct Answer: D

Section: (none)

Explanation

Explanation/Reference:

QUESTION 111

Your boss is interested in a wireless WAN solution which provides higher bandwidth than point-to-multipoint (p2mp) wireless. Which description is correct?

- A. Service providers cannot install point-to-point (p2p) links from a p2mp hub.
- B. P2p wireless connections can provide up to 44 Mbps raw bandwidth.
- C. P2p links tend to be slower than p2mp.
- D. P2mp wireless connections can provide up to 1.544 Mbps raw bandwidth.

Correct Answer: B

Section: (none)

Explanation

Explanation/Reference:

QUESTION 112

What is SNMP?

- A. Simple Network Management Protocol
- B. Simple Network Monitoring Protocol
- C. Sampling Network Management Process
- D. Simple Network Maintenance Procedure

Correct Answer: A

Section: (none)

Explanation

Explanation/Reference:

QUESTION 113

When building Global network businesses , which three principles should be used?

- A. Customer focus, continuous standardization, and core versus context
- B. Customer focus, centralization, and core versus context
- C. Customer focus, decentralization, and core versus edge
- D. Customer focus, decentralization, and core versus context

Correct Answer: A

Section: (none)

Explanation

Explanation/Reference:

QUESTION 114

For the following items, which component of the CiscoWorks product allows a network administrator to define and manage service levels?

- A. Service assurance agent (SAA)
- B. Service level manager (SLM)
- C. Collection Manager (CM)
- D. Service level agreement (SLA)

Correct Answer: B

Section: (none)

Explanation

Explanation/Reference:

QUESTION 115

What Cisco router configuration component does an implementer use to create a floating static route?

- A. Primary interface
- B. Administrative distance
- C. Loopback
- D. Description

Correct Answer: B

Section: (none)

Explanation

Explanation/Reference:

QUESTION 116

Which Cisco proprietary protocol will be used in LAN switches to control multicast traffic at the data link layer within a LAN switch?

- A. MAC filters
- B. Cisco Group Management Protocol (CGMP)
- C. Cisco Discovery Protocol (CDP)
- D. IGMP

Correct Answer: B

Section: (none)

Explanation

Explanation/Reference:

QUESTION 117

How many more bits does IPv6 use for addresses than IPv4?

- A. 32
- B. 64
- C. 96
- D. 128

Correct Answer: C

Section: (none)

Explanation

Explanation/Reference:

QUESTION 118

What does the Cisco security architecture called SAFE stand for?

- A. Security Architecture for Enterprise
- B. Standard Assessment for Enterprise
- C. Security Analysis for Enterprise
- D. Standard Architecture for Enterprise

Correct Answer: A

Section: (none)

Explanation

Explanation/Reference:

QUESTION 119

You are a network technician, can you tell me how many IP addresses are available for hosts in the subnet 198.10.100.64/27?

- A. 62
- B. 30
- C. 126
- D. 14

Correct Answer: B

Section: (none)

Explanation

Explanation/Reference:

QUESTION 120

For the following options, which emerging WAN technology uses DSL coding and digital modulation techniques with Ethernet?

- A. Cable
- B. Wireless
- C. SMDS
- D. Long-Reach Ethernet (LRE)

Correct Answer: D

Section: (none)

Explanation

Explanation/Reference:

QUESTION 121

What does ODR stand for?

- A. Open default routing
- B. Optical demand routing
- C. Open dedicated routing
- D. On-demand routing

Correct Answer: D

Section: (none)

Explanation

Explanation/Reference:

QUESTION 122

Observe the following options, in which section of the network document does Cisco recommend a discussion of performance, scalability, capacity, security, and traffic needs?

- A. Design summary
- B. Design solution
- C. Executive summary
- D. Design requirements

Correct Answer: D

Section: (none)

Explanation

Explanation/Reference:

QUESTION 123

Which advantage is of security systems that are part of the Cisco ecosystem?

- A. There is a suite of products to choose from.
- B. Various partners as well as supporting products increase the effectiveness of security systems.
- C. There are no advantages.
- D. The Cisco ecosystem ensure that partners can implement the solution.

Correct Answer: B

Section: (none)

Explanation

Explanation/Reference:

QUESTION 124

Area Border Router (ABR) is defined by which protocol?

- A. Enhanced Interior Gateway Routing Protocol (EIGRP)
- B. OSPF
- C. On-Demand Routing (ODR)
- D. IS-IS

Correct Answer: B

Section: (none)

Explanation

Explanation/Reference:

QUESTION 125

Which queuing mechanism establishes four interface output queues that will be used for traffic scheduling?

- A. Priority queuing (PQ)
- B. First-in, first-out (FIFO)
- C. Weighted fair queuing (WFQ)
- D. Custom queuing (CQ)

Correct Answer: A

Section: (none)

Explanation

Explanation/Reference:

QUESTION 126

For the following items, which is an SP Edge module in the Enterprise Composite Network model?

- A. Core layer
- B. Edge distribution
- C. Public Switched Telephone Network (PSTN) service
- D. Server farm

Correct Answer: C

Section: (none)

Explanation

Explanation/Reference:

QUESTION 127

Which method will be used to secure a network against man-in-the-middle attack?

- A. Two-factor authentication
- B. Management module
- C. Encryption

D. Firewall

Correct Answer: C

Section: (none)

Explanation

Explanation/Reference:

QUESTION 128

Which one of the following QoS mechanisms is recommended for VoIP networks?

- A. Low-latency queuing (LLQ)
- B. Switched-based queuing
- C. Fast queuing
- D. Custom queuing

Correct Answer: A

Section: (none)

Explanation

Explanation/Reference:

QUESTION 129

In which layer of the OSI model does Real-Time Transport Protocol (RTP) operate ?

- A. Network
- B. Application
- C. Transport
- D. Session

Correct Answer: C

Section: (none)

Explanation

Explanation/Reference:

QUESTION 130

Developing a network design according to layers such as core and distribution is an example of which type of design methodology?

- A. Flat design
- B. Top-down
- C. Hierarchical structured design
- D. PDIOO

Correct Answer: C

Section: (none)

Explanation

Explanation/Reference:

QUESTION 131

Which statement is true about WANs?

- A. Switches or concentrators often relay information through the WAN.
- B. WANs typically encompass broad geographic areas.
- C. In general, WAN technologies function at the middle three layers of the Open System Interconnection (OSI) model.
- D. Users of WANs do not typically own all transmission facilities.

Correct Answer: B

Section: (none)

Explanation

Explanation/Reference:

QUESTION 132

Which item is not a true disadvantage of the full-mesh topology?

- A. Central hub router represents a single point of failure in the network.
- B. High level of complexity to implement.
- C. Large number of packet replications required.
- D. High costs due to number of virtual circuits.

Correct Answer: A

Section: (none)

Explanation

Explanation/Reference:

QUESTION 133

Which hierarchical layer has functions such as High availability, port security, and rate limiting?

- A. Core
- B. Access
- C. Network
- D. Distribution

Correct Answer: B

Section: (none)

Explanation

Explanation/Reference:

QUESTION 134

With which of the following capabilities does RIPv2 improve RIPv1?

- A. Multicast updates, authentication, variable-length subnet mask (VLSM)
- B. Authentication, VLSM, hop count
- C. Multicast updates, authentication, hop count
- D. Multicast updates, hop count

Correct Answer: A

Section: (none)

Explanation

Explanation/Reference:

QUESTION 135

Which term accurately describes a specific measure of delay often used to describe voice and video networks?

- A. Jitter
- B. Flux
- C. Latency
- D. Reliability

Correct Answer: A

Section: (none)

Explanation

Explanation/Reference:

QUESTION 136

Which layer is in charge of fast transport in the hierarchical network model?

- A. Network
- B. Distribution
- C. Access
- D. Core

Correct Answer: D

Section: (none)

Explanation

Explanation/Reference:

QUESTION 137

What is the reason for switching preferred on shared segments?

- A. Switched segments provide a collision domain for each host.
- B. Switched segments provide a broadcast domain for each host
- C. Shared segments provide a broadcast domain for each host.
- D. Shared segments provide a collision domain for each host.

Correct Answer: A

Section: (none)

Explanation

Explanation/Reference:

QUESTION 138

Study the following options carefully. The corporate Internet is part of which functional area?

- A. Enterprise Edge
- B. Enterprise Campus

- C. Service Provider (SP) Edge
- D. Enterprise

Correct Answer: A

Section: (none)

Explanation

Explanation/Reference:

QUESTION 139

How often does a RIPv1 router broadcast its routing table by default?

- A. Every 90 seconds
- B. Every 30 seconds
- C. Every 60 seconds
- D. RIPv1 does not broadcast periodically

Correct Answer: B

Section: (none)

Explanation

Explanation/Reference:

QUESTION 140

For the following protocols, which one maps names to IPv6 addresses?

- A. Domain Name System (DNS)
- B. DNSv2
- C. Address Resolution Protocol (ARP)
- D. Neighbor discovery (ND)

Correct Answer: A

Section: (none)

Explanation

Explanation/Reference:

QUESTION 141

What does CDP stand for?

- A. Collection Device Protocol
- B. Campus Discovery Protocol
- C. Cisco Device Protocol
- D. Cisco Discovery Protocol

Correct Answer: D

Section: (none)

Explanation

Explanation/Reference:

QUESTION 142

Which feature will not transfer packets when there is silence?

- A. Ear and mouth (E&M)
- B. Voice Activity Detection (VAD)
- C. Digital Silence Suppressor (DSS)
- D. Dial peers

Correct Answer: B

Section: (none)

Explanation

Explanation/Reference:

QUESTION 143

In a network with Enhanced Interior Gateway Routing Protocol (EIGRP) and IGRP using the same autonomous system number, what will happen on the router configured with both protocols?

- A. Redistribution occurs automatically.
- B. Redistribution is not necessary.
- C. EIGRP assumes IGRP is a less capable protocol and overtakes it.
- D. Redistribution does not occur automatically.

Correct Answer: A

Section: (none)

Explanation

Explanation/Reference:

QUESTION 144

What is the acronym PDIOO short for?

- A. Purpose, design, install, operation, optimization
- B. Purpose, design, implement, operate, optimize
- C. Plan, design, install, operation, optimization
- D. Plan, design, implement, operate, optimize

Correct Answer: D

Section: (none)

Explanation

Explanation/Reference:

QUESTION 145

Which packet-switching topology approach typically requires the greatest level of expertise to implement?

- A. Hub and spoke
- B. Point-to-point
- C. Star
- D. Partial mesh

Correct Answer: D

Section: (none)

Explanation

Explanation/Reference:

QUESTION 146

The network-design process is limited by many external constraints. Which origins are of these constraints?

- A. Technological, worldwide standards, social, and managerial
- B. Technological, political, social, and economical
- C. Technological, cost, social, and economical
- D. Managerial, political, social, and economical

Correct Answer: B

Section: (none)

Explanation

Explanation/Reference:

QUESTION 147

What is DHCP?

- A. Dynamic Host Configuration Protocol
- B. Dedicated Host Configuration Protocol
- C. Dynamic Host Control Protocol
- D. Predecessor to BOOTP

Correct Answer: A

Section: (none)

Explanation

Explanation/Reference:

QUESTION 148

Where do you put DNS and DHCP on Enterprise model? Select two.

- A. Enterprise campus Server Farm Module
- B. Enterprise edge
- C. SP Edge Premise
- D. Enterprise Branch

Correct Answer: AD

Section: (none)

Explanation

Explanation/Reference:

QUESTION 149

Data link switching is typically used in which Enterprise Campus Module layer?

- A. Server Farm

- B. Campus Core
- C. Building Access
- D. Building Distribution
- E. Internet Connectivity

Correct Answer: C

Section: (none)

Explanation

Explanation/Reference:

QUESTION 150

Which three of these are components of the North American Numbering Plan? (Choose three.)

- A. Numbering Plan Area
- B. country code
- C. prefix
- D. zone
- E. line number
- F. trunk channel

Correct Answer: ACE

Section: (none)

Explanation

Explanation/Reference:

QUESTION 151

Which network management protocol allows a network device to have vendor-specific objects for management?

- A. SNMP v1
- B. SNMP v2
- C. SNMP v3
- D. MIB
- E. RMON1
- F. RMON2

Correct Answer: A

Section: (none)

Explanation

Explanation/Reference:

QUESTION 152

When monitoring voice traffic on a converged network, which are the three most important QoS characteristics to pay attention to? (Choose three.)

- A. delay
- B. jitter
- C. packet loss

- D. bit error rate
- E. CRTP hop configuration

Correct Answer: ABC

Section: (none)

Explanation

Explanation/Reference:

QUESTION 153

Which two of these are the most accurate characteristics of EIGRP deployment? (Choose two.)

- A. Provides features for most Ethernet, Frame Relay, and dial-up network deployment types.
- B. Provides routing for IPv4, IPv6, Appletalk, and IPX.
- C. Provides default hierarchical routing and summarization of a VLSM IP address deployment.
- D. Provides quick convergence through neighbor relationships and topology backup routes.
- E. Provides the best route selection on combined default metrics of active bandwidth, delay, load, reliability, and MTU parameters.

Correct Answer: BD

Section: (none)

Explanation

Explanation/Reference:

QUESTION 154

Which of the following is a modular component within the Cisco Enterprise Campus module in the Cisco Enterprise Architecture framework?

- A. Teleworker
- B. E-Commerce
- C. Internet Connectivity
- D. Building Distribution
- E. WAN/MAN Site-to-Site VPN

Correct Answer: D

Section: (none)

Explanation

Explanation/Reference:

QUESTION 155

A company is implementing an Identity Management solution with these characteristics:
existing Cisco ACS 4.0

Cisco Catalyst switches

minimal added investments

Which Cisco Trust and Identity solution would you recommend?

- A. NAC Appliance (Cisco Clean Access)
- B. Cisco IBNS
- C. NAC Framework
- D. Cisco Security Agent

- E. csm
- F. Cisco Security MARS

Correct Answer: B

Section: (none)

Explanation

Explanation/Reference:

QUESTION 156

Which H.323 protocol monitors calls for factors such as packet counts, packet loss, and arrival jitter?

- A. H.225
- B. H.245
- C. RAS
- D. RTCP

Correct Answer: D

Section: (none)

Explanation

Explanation/Reference:

QUESTION 157

The BodMech online fitness organization specializes in creating fitness plans for senior citizens. The company recently added a health-products retail inventory. Which E-Commerce module device will allow customers to interact with the company and purchase products?

- A. application server
- B. database server
- C. public server
- D. web server
- E. NIDS appliance
- F. SMTP mail server

Correct Answer: D

Section: (none)

Explanation

Explanation/Reference:

QUESTION 158

Which two of the following are benefits of using a modular approach to network design? (Choose two.)

- A. improves flexibility
- B. facilitates implementation
- C. lowers implementation costs
- D. improves customer participation in the design process

Correct Answer: AB

Section: (none)

Explanation

Explanation/Reference:

QUESTION 159

Which two routing protocols usually converge most quickly? (Choose two.)

- A. RIPv1
- B. RIPv2
- C. BGP
- D. IGRP
- E. EIGRP
- F. OSPF

Correct Answer: EF

Section: (none)

Explanation

Explanation/Reference:

QUESTION 160

When designing using the Cisco Enterprise Architecture, in which Enterprise Campus layer does the Enterprise Teleworker module establish its connection?

- A. Building Core
- B. Building Access
- C. Enterprise Branch
- D. Enterprise Data Center
- E. WAN/Internet

Correct Answer: E

Section: (none)

Explanation

Explanation/Reference:

QUESTION 161

Which three of these are layers in the Cisco SONA Architecture? (Choose three.)

- A. Application
- B. Physical
- C. Presentation
- D. Integrated Transport
- E. Interactive Services
- F. Networked Infrastructure

Correct Answer: AEF

Section: (none)

Explanation

Explanation/Reference:

QUESTION 162

You are performing an audit of a customer's existing network and need to obtain the following router information:

Interfaces

running processes

IOS image being executed

Which command should you use?

- A. show version
- B. show tech-support
- C. show startup-config
- D. show running-config
- E. show processes memory

Correct Answer: B

Section: (none)

Explanation

Explanation/Reference:

QUESTION 163

Which Cisco device management feature is most suited to metering network traffic and providing data for billing network usage?

- A. BGP
- B. Cisco Discovery Protocol
- C. QoS
- D. RMON
- E. NetFlow

Correct Answer: E

Section: (none)

Explanation

Explanation/Reference:

QUESTION 164

When collecting information about a customer's existing network, which two sources will provide the most accurate data? (Choose two.)

- A. traffic analysis
- B. customer interview
- C. customer-supplied server list
- D. existing network topology diagram
- E. configurations obtained from network equipment

Correct Answer: AE

Section: (none)

Explanation

Explanation/Reference:

QUESTION 165

Which modules are found in the Enterprise Edge functional area of the Cisco Enterprise Architecture? Select all that apply.

- A. Teleworker
- B. WAN/MAN
- C. Server Farm
- D. E-Commerce
- E. Internet Connectivity
- F. Remote Access/VPN

Correct Answer: BDEF

Section: (none)

Explanation

Explanation/Reference:

QUESTION 166

A campus network needs end-to-end QoS tools to manage traffic and ensure voice quality. Which three types of QoS tools are needed? (Choose three.)

- A. interface queuing and scheduling
- B. congestion management
- C. compression and fragmentation
- D. bandwidth provisioning
- E. traffic classification
- F. buffer management

Correct Answer: ADE

Section: (none)

Explanation

Explanation/Reference:

QUESTION 167

DRAG DROP

Drag the function on the left with the option most closely paired on the right

NetFlow

Complete monitor of all OSI layers

RMON

Communication between devices and monitoring

CDP

Data Link, Multicast

SNMP

Process ACLs, packet analysis for security

- A.
- B.
- C.
- D.

Correct Answer:
Section: (none)
Explanation

Explanation/Reference:

Drag the function on the left with the option most closely paired on the right

NetFlow	Comple	RMON	
RMON	Commu	SNMP	monitoring
CDP	Data L	CDP	
SNMP	Process	NetFlow	ty

QUESTION 168
DRAG DROP

Drag the function on the left with the option most closely paired on the right.

RMON	Defines the Communication Type
SNMP	Uses Layer 2 and Multicast
Netflow	Pending
CDP	ACL and Security Analysis

- A.
- B.
- C.
- D.

Correct Answer:
Section: (none)

Explanation

Explanation/Reference:

Drag the function on the left with the option most closely paired on the right.

RMON	Defines	SNMP	n Type
SNMP	Uses La	CDP	
Netflow	Pending	Netflow	
CDP	ACL and	RMON	

QUESTION 169

DRAG DROP

Drag the function on the left with the option most closely paired on the right.

Http/Email	Application
Budget	Network Services
IP Phone/Voice	Business Constraints
Security	Technical Goals

- A.
- B.
- C.
- D.

Correct Answer:

Section: (none)

Explanation

Explanation/Reference:

Drag the function on the left with the option most closely paired on the right.

Http/Email	Http/Email
Budget	IP Phone/Voice
IP Phone/Voice	Budget
Security	Security

QUESTION 170

Which of the following is a component within the Cisco Enterprise Campus module?

- A. Teleworker
- B. E-Commerce
- C. Internet Connectivity
- D. Building Distribution
- E. WAN/MAN Site-to-Site VPN

Correct Answer: D

Section: (none)

Explanation

Explanation/Reference:

QUESTION 171

The evolution of the Data Center is best represented by the 3.0 architecture component of virtualization. Which of the following is not an example of the virtualization taking place in the Data Center?

- A. Virtualized media access utilizing Fibre Channel over Ethernet
- B. VLANs and virtual storage area networks (VSANs) provide for virtualized LAN and SAN connectivity, separating physical networks and equipment into virtual entities
- C. Virtual Machines that run an application within the client operating system, which is further virtualized and running on common hardware
- D. Storage devices virtualized into storage pools, and network devices are virtualized using device contexts

Correct Answer: A

Section: (none)

Explanation

Explanation/Reference:

QUESTION 172

Which three types of WAN topologies can be deployed in the Service Provider Module? (Choose three.)

- A. ring

- B. star
- C. full mesh
- D. core/edge
- E. collapsed core
- F. partial mesh

Correct Answer: BCF

Section: (none)

Explanation

Explanation/Reference:

QUESTION 173

You need to connect to a remote branch office via an Internet connection. The remote office does not use Cisco equipment. This connection must be secure and must support OSPF.. Which of the following can be used to transport data to the branch office?

- A. GRE over IPsec
- B. IPsec
- C. GRE
- D. IPsec VTI

Correct Answer: A

Section: (none)

Explanation

Explanation/Reference:

QUESTION 174

When designing an EIGRP network, which two things should you take into consideration? (Choose two.)

- A. ASN and K values must match.
- B. The neighbor command can be used to enable unicast communication.
- C. The neighbor diameter cannot exceed a 15-hops limit.
- D. NSSA areas can be used to redistribute external routes.
- E. Neighbor relationship can be established with non-Cisco routers.

Correct Answer: AB

Section: (none)

Explanation

Explanation/Reference:

QUESTION 175

Identify the three items that pertain to EIGRP. (Choose three.)

- A. Can use multiple unequal paths.
- B. Routes are redistributed as type 2 by default.
- C. ASN and K values must match to form neighbors.
- D. Uses multicast address 224.0.0.9 for updates.
- E. Exchanges full routing table every 30 seconds.

- F. Summary routes have AD of 90.
- G. External routes have AD of 170.

Correct Answer: ACG

Section: (none)

Explanation

Explanation/Reference:

QUESTION 176

OSPF will be used as the IGP within a campus network. Which two things should you consider before deployment? (Choose two.)

- A. All areas need to connect back to area 0.
- B. The OSPF process number on each router should match.
- C. NSSA areas should be used when an area cannot connect directly to area 0.
- D. Stub areas should be connected together using virtual links.
- E. ECMP may cause undesired results depending on the environment.

Correct Answer: AE

Section: (none)

Explanation

Explanation/Reference:

QUESTION 177

Which two are characteristics of a Lightweight Access Point? (Choose two.)

- A. managed via a central wireless LAN controller
- B. code upgrade performed via a TFTP server
- C. CAPWAP tunnels
- D. managed directly via CLI or web interface
- E. facilitates the creation of its own WLANs and port mappings

Correct Answer: AC

Section: (none)

Explanation

Explanation/Reference:

QUESTION 178

What are three key areas that need to be considered when designing a remote data center? (Choose three.)

- A. power diversity
- B. active directory services
- C. Cisco IOS versions
- D. data storage
- E. applications
- F. user access
- G. packet routing

Correct Answer: ADE

Section: (none)

Explanation

Explanation/Reference:

QUESTION 179

Which is the North American RIR for IPv4 addresses?

- A. RIPE
- B. ARIN
- C. IANA
- D. IEEE
- E. APNIC

Correct Answer: B

Section: (none)

Explanation

Explanation/Reference:

QUESTION 180

In which phase of PPDIOO are the network requirements identified?

- A. Design
- B. Plan
- C. Prepare
- D. Implement
- E. Operate
- F. Optimize

Correct Answer: B

Section: (none)

Explanation

Explanation/Reference:

QUESTION 181

What is the most compact representation of the following IPv6 address?
2001:db8:0000:0000:cafe:0000:0000:1234

- A. 2001:db8::cafe::1234
- B. 2001:db8::cafe:0000:0000:1234
- C. 2001:db8:0:0:cafe::1234
- D. 2001:db8::cafe:0:1234

Correct Answer: C

Section: (none)

Explanation

Explanation/Reference:

QUESTION 182

Which is part of the Prepare phase of PPDIOO?

- A. Obtain site contact information
- B. Perform network audit
- C. Identify customer requirements
- D. Perform gap analysis

Correct Answer: C

Section: (none)

Explanation

Explanation/Reference:

QUESTION 183

Your supervisor has asked you to deploy a routing protocol within the lab environment that will allow for unequal cost multipath routing. Which should you choose?

- A. EIGRP
- B. OSPF
- C. IS-IS
- D. RIP

Correct Answer: A

Section: (none)

Explanation

Explanation/Reference:

QUESTION 184

Where in the Cisco Enterprise Architecture model does network management reside?

- A. Enterprise data center module
- B. Enterprise campus module
- C. Enterprise edge module
- D. Service Provider edge module
- E. Service Provider data center module

Correct Answer: B

Section: (none)

Explanation

Explanation/Reference:

QUESTION 185

Which voice codec should you use in order to provide toll quality calls?

- A. G.711
- B. G.718
- C. G.722

D. G.729

Correct Answer: A

Section: (none)

Explanation

Explanation/Reference:

QUESTION 186

Which is a factor in enterprise campus design decisions?

- A. network application characteristics
- B. routing protocol characteristics
- C. switching latency characteristics
- D. packet filtering characteristics

Correct Answer: A

Section: (none)

Explanation

Explanation/Reference:

QUESTION 187

Which three statements are true regarding the virtual interface on a Cisco Wireless LAN Controller? (Choose three.)

- A. supports mobility management
- B. serves as a DHCP relay
- C. used for all controller to AP communication
- D. supports embedded Layer 3 security
- E. default for out-of-band management
- F. default for in-band management
- G. provides connectivity to AAA servers

Correct Answer: ABD

Section: (none)

Explanation

Explanation/Reference:

QUESTION 188

When there is a need for immunity to EMI for connecting locations that are greater than 100 meters apart, which two solutions can be utilized? (Choose two.)

- A. multimode fiber
- B. Fibre Channel
- C. HVDC transmission lines
- D. single-mode fiber
- E. serial RS-232
- F. Gigabit Ethernet 1000BASE-CX

Correct Answer: AD

Section: (none)

Explanation

Explanation/Reference:

QUESTION 189

Which three are security services offered through Cisco Router Security? (Choose three.)

- A. Trust and Identity
- B. Integrated Threat Control
- C. Unified Wireless Network Security Solution
- D. Secure Connectivity
- E. Voice-Messaging Security
- F. Endpoint Security
- G. Virtual Security Gateway

Correct Answer: ABD

Section: (none)

Explanation

Explanation/Reference:

QUESTION 190

Which layer of the OSI model does Cisco recommend to place the enterprise network core layer, when designing a network based on its switched hierarchical design?

- A. Layer 1
- B. Layer 2
- C. Layer 3
- D. Layer 4

Correct Answer: C

Section: (none)

Explanation

Explanation/Reference:

QUESTION 191

Which is the purpose of the Cisco NAC Profiler?

- A. automates discovery and inventory of all LAN attached devices
- B. generates a profile based on username and group
- C. learns and creates a database of virus definitions based on LAN traffic
- D. a database used to map user VPN accounts

Correct Answer: A

Section: (none)

Explanation

Explanation/Reference:

QUESTION 192

In the enterprise data center, which are the three main components? (Choose three.)

- A. Network Infrastructure
- B. Interactive services
- C. Data Center Management
- D. Internet services
- E. WAN services
- F. VPN and remote access

Correct Answer: ABC

Section: (none)

Explanation

Explanation/Reference:

QUESTION 193

You have a campus network that consists of only Cisco devices. You have been tasked to discover the device platforms, the IOS versions, and an IP address of each device to map the network. Which proprietary protocol will assist you with this task?

- A. SNMP
- B. TCP
- C. CDP
- D. ICMP
- E. LLDP

Correct Answer: C

Section: (none)

Explanation

Explanation/Reference:

QUESTION 194

Which two are types of network virtualization? (Choose two.)

- A. VSS: Virtual Switching System
- B. VRF: virtual routing and forwarding
- C. VCI: virtual channel identifier
- D. VLSM: variable length subnet masking
- E. VM: virtual machine
- F. VMP: Virtual Memory Pool

Correct Answer: AB

Section: (none)

Explanation

Explanation/Reference:

QUESTION 195

Which three modular components are part of the Cisco Enterprise Edge Architecture? (Choose three.)

- A. e-commerce module
- B. Internet connectivity module
- C. server farm module
- D. remote access and VPN module
- E. PSTN services module
- F. enterprise branch module
- G. building distribution module

Correct Answer: ABD

Section: (none)

Explanation

Explanation/Reference:

QUESTION 196

You are tasked with designing a new branch office that will support 75 users with possible expansion in the future and will need a highly available network. Which of the branch design profiles should be implemented?

- A. large branch design
- B. medium branch design
- C. teleworker design
- D. small branch design

Correct Answer: B

Section: (none)

Explanation

Explanation/Reference:

QUESTION 197

Which three solutions are part of the Borderless Network Services? (Choose three.)

- A. Wireless
- B. Routing
- C. TrustSec
- D. MediaNet
- E. Switching
- F. EnergyWise
- G. Next-Gen WAN

Correct Answer: CDF

Section: (none)

Explanation

Explanation/Reference:

QUESTION 198

Which model of ISR is utilized for the teleworker design profile?

- A. Cisco 1900 Series

- B. Cisco 1800 Series
- C. Cisco 800 Series
- D. Cisco 500 Series

Correct Answer: C

Section: (none)

Explanation

Explanation/Reference:

QUESTION 199

Which Cisco technology using Nexus NX-OS infrastructure allows the network architect to create up to four separate control and data plane instances of the Nexus chassis?

- A. virtual port-channel
- B. virtual routing and forwarding
- C. virtual switching system
- D. virtual device context

Correct Answer: D

Section: (none)

Explanation

Explanation/Reference:

QUESTION 200

Which two can be used as a branch office WAN solution? (Choose two.)

- A. frame relay
- B. MPLS
- C. Metro Ethernet
- D. GPRS
- E. dial-up modem
- F. 3G USB modems

Correct Answer: BC

Section: (none)

Explanation

Explanation/Reference:

QUESTION 201

High availability is a key design consideration in the enterprise campus network. In a fully redundant topology, which is likely to provide faster IGP convergence during a failure?

- A. redundant supervisors
- B. redundant supervisors with Cisco Nonstop Forwarding (NSF) and Stateful Switchover (SSO)
- C. single supervisors with tuned IGP timers
- D. single supervisors

Correct Answer: C

Section: (none)

Explanation

Explanation/Reference:

QUESTION 202

When designing for a remote worker, which two are typical requirements? (Choose two.)

- A. best-effort interactive and low-volume traffic patterns
- B. connections to the enterprise edge using Layer 2 WAN technologies
- C. always-on connection with SLA from ISP
- D. voice and IPsec VPN support
- E. high-end security devices with stateful firewall filtering
- F. dual or multihoming to ISPs

Correct Answer: CD

Section: (none)

Explanation

Explanation/Reference:

QUESTION 203

Which three options are valid Cisco STP tools used to ensure best-practice access layer design for the enterprise campus? (Choose three.)

- A. Portfast
- B. UDLD
- C. Root Guard
- D. BPDU Guard
- E. Flex Links
- F. SPAN
- G. EtherChannel

Correct Answer: ACD

Section: (none)

Explanation

Explanation/Reference:

QUESTION 204

When designing a WAN backup for voice and video applications, what three types of connections should be used? (Choose three.)

- A. Private WAN
- B. internet
- C. ISDN
- D. MPLS
- E. dial-up
- F. ATM
- G. DSL

Correct Answer: ACD

Section: (none)

Explanation

Explanation/Reference:

QUESTION 205

Spanning Layer 2 across geographically separate data centers is a key consideration for current data center designs. Which is the name of the NX-OS technology that facilitates MAC in IP transport for Layer 2 VLANs across any IP network?

- A. Overlay Transport Virtualization
- B. Virtual Private LAN Services
- C. Generic Routing Encapsulation
- D. QinQ tunneling

Correct Answer: A

Section: (none)

Explanation

Explanation/Reference:

QUESTION 206

A company wants to use private IP addresses for all its internal hosts. Which technology can the company use to provide access to the Internet using a single public IP address?

- A. static NAT
- B. source routing
- C. ACL
- D. PAT

Correct Answer: D

Section: (none)

Explanation

Explanation/Reference:

QUESTION 207

Which three technologies are recommended to be used for WAN connectivity in today's Enterprise Edge designs? (Choose three.)

- A. DWDM
- B. Metro Ethernet
- C. Frame Relay
- D. MPLS VPN
- E. ISDN
- F. DSL
- G. Wireless

Correct Answer: ABD

Section: (none)

Explanation

Explanation/Reference:

QUESTION 208

Which is usually used to connect to an upstream ISP?

- A. EIGRP
- B. OSPF
- C. BGP
- D. IS-IS
- E. RIPv2

Correct Answer: C

Section: (none)

Explanation

Explanation/Reference:

QUESTION 209

An enterprise campus module is typically made up of four submodules, as described by the Cisco Enterprise Architecture Model. Which two submodules are part of this module?

- A. DMZ
- B. enterprise branch
- C. building distribution
- D. server farm/data center
- E. MAN

Correct Answer: CD

Section: (none)

Explanation

Explanation/Reference:

QUESTION 210

At which layer of the network is route summarization recommended?

- A. data link layer
- B. core layer
- C. distribution layer
- D. access layer

Correct Answer: C

Section: (none)

Explanation

Explanation/Reference:

QUESTION 211

Which WAN technology is a cost-effective method to deliver 100Mb of bandwidth to multiple branch offices?

- A. DSL

- B. DWDM
- C. ISDN
- D. Metro Ethernet

Correct Answer: D

Section: (none)

Explanation

Explanation/Reference:

QUESTION 212

Which Cisco device has the sole function at looking at threat detection and mitigation at the Enterprise edge?

- A. Cisco IOS router
- B. Cisco ASA
- C. Cisco Catalyst FWSM
- D. Cisco IPS

Correct Answer: D

Section: (none)

Explanation

Explanation/Reference:

QUESTION 213

If a teleworker is required to access the branch office via a secure IPSEC VPN connection, which technology is recommended to provide the underlying transport?

- A. ISDN
- B. Metro Ethernet
- C. Frame Relay
- D. ADSL
- E. ATM

Correct Answer: D

Section: (none)

Explanation

Explanation/Reference:

QUESTION 214

You are asked to design a new branch office that will need to support 25 users. These users will be using an ISP connection and will need to connect to the main office for network services.. Which two Cisco devices are the most appropriate to fulfill all these requirements? (Choose two.)

- A. Cisco IPS
- B. Cisco ISR G2
- C. Cisco ASA
- D. Cisco 2960
- E. Cisco CRS-1
- F. Cisco ACS

Correct Answer: BC

Section: (none)

Explanation

Explanation/Reference:

QUESTION 215

WAN backup over the Internet is often used to provide primary connection redundancy. Which is the most important consideration when passing corporate traffic over the public Internet?

- A. security
- B. static versus dynamic routing
- C. bandwidth
- D. QoS
- E. latency

Correct Answer: A

Section: (none)

Explanation

Explanation/Reference:

QUESTION 216

Which four services does the architecture for Media Services contain? (Choose four.)

- A. access services
- B. transport services
- C. storage services
- D. forwarding services
- E. session control services
- F. security services
- G. filtering services
- H. remote access services

Correct Answer: ABCE

Section: (none)

Explanation

Explanation/Reference:

QUESTION 217

To provide Layer 2 connectivity between the primary and remote data centers, given that the two data centers are using Layer 3 routed DCIs, which NX-OS technology can be used to facilitate this requirement?

- A. VRF
- B. OTV
- C. MPLS
- D. SPT
- E. vPC

Correct Answer: B

Section: (none)

Explanation

Explanation/Reference:

QUESTION 218

What is the acceptable amount of one-way network delay for voice and video applications?

- A. 300 bytes
- B. 1 sec
- C. 150 ms
- D. 500 ms

Correct Answer: C

Section: (none)

Explanation

Explanation/Reference:

QUESTION 219

Which subnet address and mask would you use for all Class D multicast addresses to be matched within an access list?

- A. 224.0.0.0/20
- B. 224.0.0.0/4
- C. 239.0.0.0/24
- D. 239.0.0.0/8
- E. 225.0.0.0/8

Correct Answer: B

Section: (none)

Explanation

Explanation/Reference:

QUESTION 220

Which three are features of LWAPP? (Choose three.)

- A. firmware synchronization
- B. local management of APs
- C. configuration changes manually synced
- D. encryption of control channel
- E. configuration data only on the WLC
- F. wireless control free operation
- G. replaces 802.1x for authentication in wireless connections

Correct Answer: ADE

Section: (none)

Explanation

Explanation/Reference:

QUESTION 221

Which type of area should you use in an enterprise OSPF deployment if you want to prevent propagation of type 5 LSAs but still allow the redistribution of external routes?

- A. stub
- B. totally stubby
- C. backbone
- D. NSSA
- E. virtual link

Correct Answer: D

Section: (none)

Explanation

Explanation/Reference:

QUESTION 222

Which mode is used to exclusively look for unauthorized access points?

- A. monitor mode
- B. sniffer mode
- C. rogue detector mode
- D. local mode

Correct Answer: C

Section: (none)

Explanation

Explanation/Reference:

QUESTION 223

Cisco Identity-Based Networking Services relies heavily on the 802.1X protocol. Which other authentication solution is used hand-in-hand with 802.1X to authenticate users for network access?

- A. RADIUS
- B. LEAP
- C. IPsec
- D. TACACS
- E. ISAKMP

Correct Answer: A

Section: (none)

Explanation

Explanation/Reference:

QUESTION 224

You are designing a network that requires a routing protocol that will use minimal network bandwidth. Which would satisfy this requirement?

- A. RIPv2

- B. RIPv6
- C. OSPF
- D. ARP
- E. EGP

Correct Answer: C

Section: (none)

Explanation

Explanation/Reference:

QUESTION 225

Which two devices would you place in your DMZ to ensure enterprise edge security? (Choose two.)

- A. IPS
- B. NAC
- C. ASA
- D. ACS
- E. WCS

Correct Answer: AC

Section: (none)

Explanation

Explanation/Reference:

QUESTION 226

During which phase of the PPDIOO model would you conduct interviews with supporting staff to develop and propose a viable solution?

- A. Prepare
- B. Plan
- C. Design
- D. Implement
- E. Operate
- F. Optimize

Correct Answer: A

Section: (none)

Explanation

Explanation/Reference:

QUESTION 227

Which protocol is used for voice bearer traffic?

- A. MGCP
- B. RTP
- C. SCCP
- D. CDP
- E. ICMP

Correct Answer: B

Section: (none)

Explanation

Explanation/Reference:

QUESTION 228

Your supervisor wants you to recommend a management protocol that will allow you to track overall bandwidth utilization, utilization by traffic type, and utilization by source and destination. Which is ideally suited for this function?

- A. MRTG
- B. NetFlow
- C. RRD
- D. SNMP

Correct Answer: B

Section: (none)

Explanation

Explanation/Reference:

QUESTION 229

Which WLC interface is dedicated for WLAN client data?

- A. virtual interface
- B. dynamic interface
- C. management interface
- D. AP manager interface
- E. service port interface

Correct Answer: B

Section: (none)

Explanation

Explanation/Reference:

QUESTION 230

Which factor would be most influential in choosing multimode fiber optic connections over UTP?

- A. signal attenuation
- B. required bandwidth
- C. required distance
- D. electromagnetic interference
- E. cost

Correct Answer: C

Section: (none)

Explanation

Explanation/Reference:

QUESTION 231

A hierarchical design of the EIGRP domain facilitates which two of the following? (Choose two.)

- A. route summarization
- B. faster convergence
- C. unequal cost load balancing
- D. redistribution
- E. virtual links

Correct Answer: AB

Section: (none)

Explanation

Explanation/Reference:

QUESTION 232

Which three are associated with the distribution layer within the campus design? (Choose three.)

- A. access layer aggregation
- B. route summarization
- C. network trust boundary
- D. next-hop redundancy
- E. layer 2 switching
- F. port security
- G. broadcast suppression

Correct Answer: ABD

Section: (none)

Explanation

Explanation/Reference:

QUESTION 233

Which network virtualization technology involves creating virtual routers with its own individual routing tables on a physical router?

- A. VSS
- B. vPC
- C. VRF
- D. VLAN

Correct Answer: C

Section: (none)

Explanation

Explanation/Reference:

QUESTION 234

Which protocol is used to reserve bandwidth for the transport of a particular application data flow across the network?

- A. cRTP
- B. IEEE 802.1P
- C. RSVP
- D. LFI
- E. Auto QOS

Correct Answer: C

Section: (none)

Explanation

Explanation/Reference:

QUESTION 235

Which of the following three options represents the components of the Teleworker Solution? (Choose three.)

- A. Cisco Unified IP Phone
- B. Cisco 880 Series Router
- C. Aironet Office Extend Access Point
- D. Catalyst 3560 Series Switch
- E. Cisco 2900 Series Router
- F. MPLS Layer 3 VPN
- G. Leased lines

Correct Answer: ABC

Section: (none)

Explanation

Explanation/Reference:

QUESTION 236

Which three describe challenges that are faced when deploying an environment for teleworkers? (Choose three.)

- A. supporting a mix of technically knowledgeable and nontechnical users
- B. simplifying router installation and configuration
- C. verifying available power at employee's house for necessary equipment
- D. avoiding situations where employees might use nonstandard hardware or configurations
- E. reducing daily commuting time to main office location
- F. providing access to FTP servers located in main office location
- G. implementing leased line connectivity between main office and employee's home location

Correct Answer: ABD

Section: (none)

Explanation

Explanation/Reference:

QUESTION 237

Which three are considered as technical constraints when identifying network requirements? (Choose three.)

- A. support for legacy applications
- B. bandwidth support for new applications
- C. limited budget allocation
- D. policy limitations
- E. limited support staff to complete assessment
- F. support for existing legacy equipment
- G. limited timeframe to implement

Correct Answer: ABF

Section: (none)

Explanation

Explanation/Reference:

QUESTION 238

Which types of tools are used during the network design process?

- A. Network management tools
- B. B. Network trending tools
- C. C. Network modeling tools
- D. D. Network simulation and testing tools
- E. E. Network implementation tools

Correct Answer: CD

Section: (none)

Explanation

Explanation/Reference:

QUESTION 239

DRAG DROP



<http://www.gratisexam.com/>

Physical networks and equipment	Cisco VN-link technologies, including the Nexus 1000V virtual switch for VMware ESX
Network, compute, and virtualization resources physically combined to deliver on optimized end-to-end virtualized environment	VLANs and VSANs
Simplified data center infrastructure and TCO	Cisco Unified Computing system
Virtual machine visibility and policy control	-VSAN, virtual device contents, and unified fabric

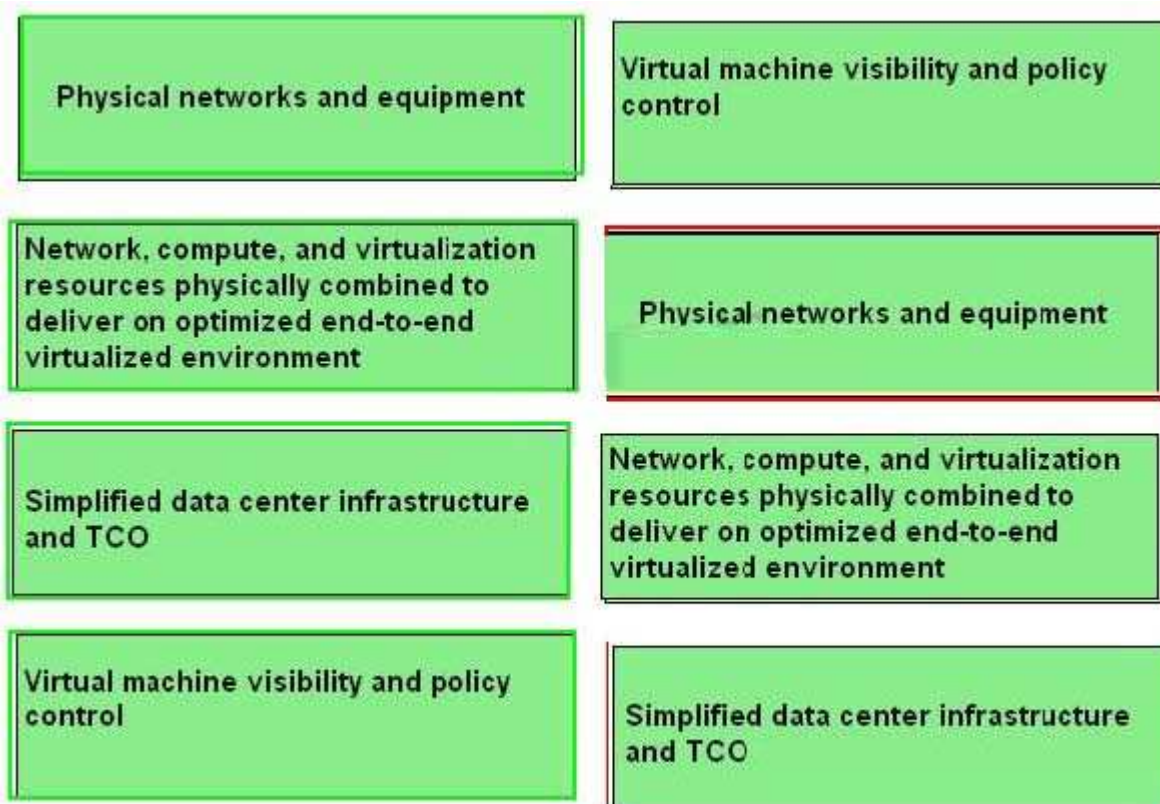
- A.
- B.
- C.
- D.

Correct Answer:

Section: (none)

Explanation

Explanation/Reference:



QUESTION 240
DRAG DROP

Click and drag the phases of the PPDIOO network lifecycle approach on the left to the their order on the right.

Plan	Phase
Design	Phase
Prepare	Phase
Operate	Phase
Optimize	Phase
Implement	Phase

- A.
- B.
- C.
- D.

Correct Answer:

Section: (none)

Explanation

Explanation/Reference:

Click and drag the phases of the PPDIOO network lifecycle approach on the left to the their order on the right.

Plan	Prepare
Design	Plan
Prepare	Design
Operate	Implement
Optimize	Operate
Implement	Optimize

QUESTION 241

DRAG DROP

The first phase of PPDIOO entails identifying customer requirements. Drag the example on the left to the associated requirement on the right.

Budget	Identify existing and planned services
Email and HTTP	Identify existing and planned services
Application compatibility	Define organizational requirements
IP telephony and video	Define the technical requirements
Security	Define the technical requirements

- A.
- B.
- C.
- D.

Correct Answer:

Section: (none)

Explanation

Explanation/Reference:

The first phase of PPDIOO entails identifying customer requirements. Drag the example on the left to the associated requirement on the right.

Budget	Email and HTTP
Email and HTTP	IP telephony and video
Application compatibility	Budget
IP telephony and video	Security
Security	Application compatibility

QUESTION 242
DRAG DROP

Drag the description or characteristic on the left to the appropriate technology or protocol on the right.

provides complete network visibility from the physical layer to the application layer	SNMP
processes larger ACLs efficiently for packet filtering and security services	RMON
defines how information is exchanged between network management applications and agents	CDP
runs over the data link layer using a multicast address	NetFlow

- A.
- B.
- C.
- D.

Correct Answer:
Section: (none)
Explanation

Explanation/Reference:

Drag the description or characteristic on the left to the appropriate technology or protocol on the right.

provides complete network visibility from the physical layer to the application layer

processes larger ACLs efficiently for packet filtering and security services

defines how information is exchanged between network management applications and agents

runs over the data link layer using a multicast address

defines how information is exchanged between network management applications and agents

provides complete network visibility from the physical layer to the application layer

runs over the data link layer using a multicast address

processes larger ACLs efficiently for packet filtering and security services

QUESTION 243

DRAG DROP

Drag the associated virtualization tool or solution on the left to the appropriate design requirement on the right.

VLANs and VSANs

Cisco Unified Computing System

Cisco VN-Link technologies, including the Nexus 1000V Virtual Switch for VMware ESX

VSAN, virtual device contents, and unified fabric

virtual-machine visibility

simplified data center infrastructure

network, compute, and virtualization resources to deliver an optimized end-to-end experience

physical networks and equipment

- A.
- B.
- C.
- D.

Correct Answer:

Section: (none)

Explanation

Explanation/Reference:

Drag the associated virtualization tool or solution on the left to the appropriate design requirement on the right.

VLANs and VSANs

Cisco Unified Computing System

Cisco VN-Link technologies, including the Nexus 1000V Virtual Switch for VMware ESX

VSAN, virtual device contents, and unified fabric

Cisco VN-Link technologies, including
for VMware

VSAN, virtual device conten

Cisco Unified Comp

VLANs and



<http://www.gratisexam.com/>