

PrepKing

Number: 642-384
Passing Score: 800
Time Limit: 120 min
File Version: 9.4



<http://www.gratisexam.com/>

PrepKing 642-384

Exam A

QUESTION 1

Which two statements best describe the wireless core feature set using autonomous access points when implementing Wireless Domain Services? (Choose two)

- A. The primary Layer 2 WDS server address is configured via the infrastructure access point GUI
- B. The primary Layer 2 WDS server address is automatically discovered by the infrastructure access points through multicast
- C. The primary Layer 2 WDS is selected by the highest MAC address, followed by priority number
- D. The primary Layer 2 WDS is selected by the highest priority number, followed by MAC address
- E. The primary Layer 2 WDS is selected by the highest IP address, followed by MAC address

Correct Answer: BD

Section: (none)

Explanation

Explanation/Reference:

QUESTION 2

Which companion switch is recommended to be installed with Cisco Smart Business Communications System?

- A. C2950
- B. C3750
- C. ESW 500
- D. SRW224G4

Correct Answer: C

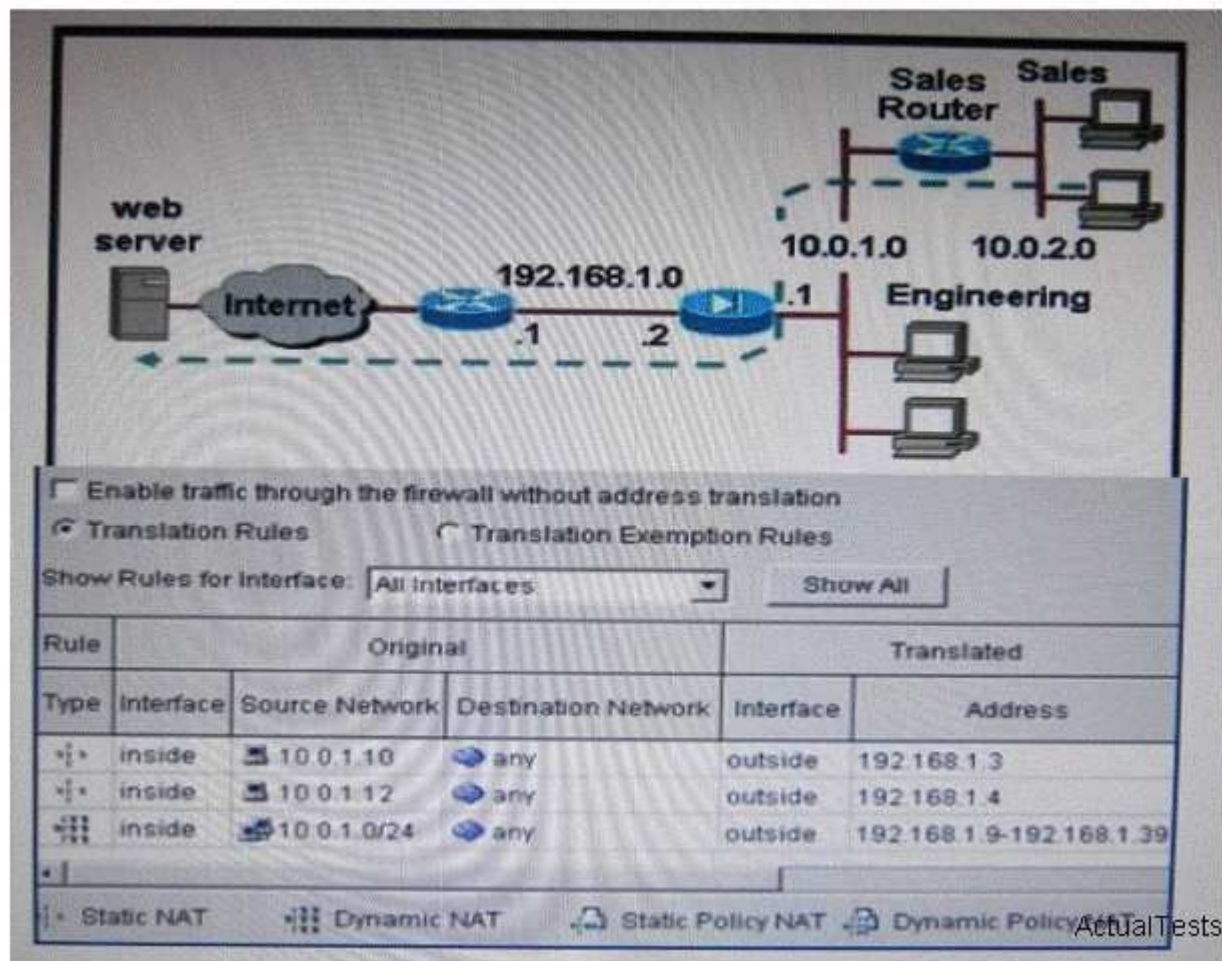
Section: (none)

Explanation

Explanation/Reference:

QUESTION 3

Refer to the exhibit.



A host on the Sales subnet (10.0.2.0/24) is not able to initiate a web connection to an outside website. According to the network diagram and partial Cisco Configuration Professional configuration shown in the exhibit. What is the cause of the problem?

- A. The dynamic NAT global pool is not configured correctly
- B. The source networks for static NAT are not configured correctly
- C. The administrator has not added an access list to allow the collection
- D. The source network for dynamic NAT is not configured correctly

Correct Answer: D

Section: (none)

Explanation

Explanation/Reference:

QUESTION 4

In which of these phase is a customers current network infrastructure assessed

- A. plan
- B. design
- C. implement
- D. prepare

Correct Answer: A
Section: (none)
Explanation

Explanation/Reference:

QUESTION 5

What are two ways to secure traffic across a network? (Choose two)

- A. Cisco ISR G2
- B. Identify-management devices
- C. ACLs
- D. Firewalls
- E. VPN connection
- F. VLANs

Correct Answer: DE
Section: (none)
Explanation

Explanation/Reference:

QUESTION 6

You have just configured HSRP and need to determine which router is active. Which command should you enter?



<http://www.gratisexam.com/>

- A. Showip hsrp active
- B. Show standby active
- C. Show standby
- D. Show active

Correct Answer: C
Section: (none)
Explanation

Explanation/Reference:

QUESTION 7

What do radio-wave radiation patterns allow you to determine when you are implementing wireless networks?

- A. Size of the coverage area
- B. Which antenna is being used
- C. Temperature of the coverage area

D. Shape of the coverage area

Correct Answer: D

Section: (none)

Explanation

Explanation/Reference:

QUESTION 8

Which command assigns a cost value of 17 to a switch port?

- A. Spanning-tree interfacefastethernet 5/8 17
- B. Spanning-tree portcost 17
- C. Spanning-tree port cost 17
- D. Spanning-tree cost 17}

Correct Answer: D

Section: (none)

Explanation

Explanation/Reference:

QUESTION 9

Which command displays the routing information that will be used to move data between VLANs on a router on a disk?

- A. Router# show ip protocols
- B. Router# show ip route
- C. Router# show vlan[vlan_ID]
- D. Router# show vlan route

Correct Answer: B

Section: (none)

Explanation

Explanation/Reference:

QUESTION 10

What were two primary design purpose for ISRs? (Choose two)

- A. To provide a centralized threat database for IPS sensors
- B. To bring IP technology, voice mail, email, and firewall services to the end user
- C. To implement and to integrate fully network services such as security, WAN routing, and Ethernet switching
- D. To offer Fast Ethernet and 10 Gigabit Ethernet as a high-speed routing platform
- E. To be a next-generation, high-performance routing platform
- F. To provide all security-management functions in one high-performance device

Correct Answer: BC

Section: (none)

Explanation

Explanation/Reference:

QUESTION 11

What are two areas in which PoE can be applied? (Choose two)

- A. building management
- B. data center management
- C. retail video kiosks
- D. digital telephony
- E. virtual networks

Correct Answer: AC

Section: (none)

Explanation

Explanation/Reference:

QUESTION 12

Which identify credential is used most commonly to secure network data?

- A. VPN
- B. PIN
- C. ID card
- D. Password

Correct Answer: B

Section: (none)

Explanation

Explanation/Reference:

QUESTION 13

You are troubleshooting OSPF neighbor establishment problems, which are occurring over Frame Relay interfaces that use the default OSPF network type. What should you verify in the router configuration?

- A. the ospf network point-to point statement under the Frame Relay interface
- B. the ospf priority statement on the Frame Relay interface on the designated router
- C. the neighbor statements on the Frame Relay interface
- D. the frame-relay map statement on the Frame Relay interface

Correct Answer: D

Section: (none)

Explanation

Explanation/Reference:

QUESTION 14

What are two advantages of using an intermediate distribution frame? (Choose two)

- A. Power over Ethernet capability
- B. higher RU density
- C. reduced space

- D. hot-swappable hard drives
- E. reduced cabling

Correct Answer: AE

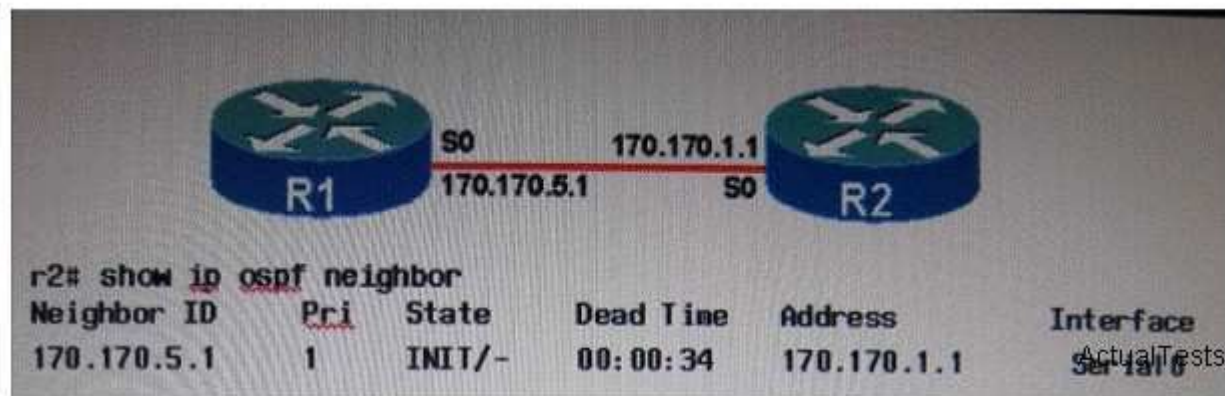
Section: (none)

Explanation

Explanation/Reference:

QUESTION 15

Refer to the exhibit.



R2 is always in the init state. Which two statements are correct? (Choose two)

- A. R2 is seeing hello packets from R1
- B. R2 is not seeing hello packets from R1
- C. The exchange of data between R1 and R2 is occurring because each is sending hello packets
- D. Two-way communication has not been established between R1 and R2 because R2 is not seeing its router ID in the hello packets that it is receiving from R1
- E. R2 has an access list defined for S0 that is blocking an OSPF multicast IP address of 224.0.0.5

Correct Answer: AD

Section: (none)

Explanation

Explanation/Reference:

QUESTION 16

Which type of antenna would be best used in a classroom environment?

- A. omnidirectional
- B. Yagi
- C. patch
- D. parabolic

Correct Answer: A

Section: (none)

Explanation

Explanation/Reference:

QUESTION 17

Which steps must be taken when preparing Cisco ASDM for use?

- A. connect the PC to the security, set up the security appliance, and use the console to connect to PIX
- B. Set up security appliance, connect to the security appliance, and configure the PC for DHCP
- C. Configure the PC, set up the security appliance, and ensure that the PC and security appliance are on the same subnet
- D. Set up security appliance, connect the PC to the security appliance, and ensure that the PC is on the same subnet as DHCP

Correct Answer: C

Section: (none)

Explanation

Explanation/Reference:

QUESTION 18

The Cisco SA 500 Series Security Appliances are built specifically for businesses with less than 100 employees. What are three important benefits of this device? (Choose three)

- A. business-grade firewall
- B. premium support via SMARTnet
- C. site-to-site VPN for remote offices
- D. Cisco IOS software-based
- E. email security
- F. XML support

Correct Answer: ACE

Section: (none)

Explanation

Explanation/Reference:

QUESTION 19

What are two advantages of implementing a router on a stick? (Choose two)

- A. offers a single traffic path to alleviate congestion
- B. uses a common network topology
- C. provides communications between VLANs on remote switches
- D. allows multilayer switches to perform routing
- E. offers the highest rate of packets-per-second routing performance
- F. allows for single point of failure for easy management and upgrade

Correct Answer: CF

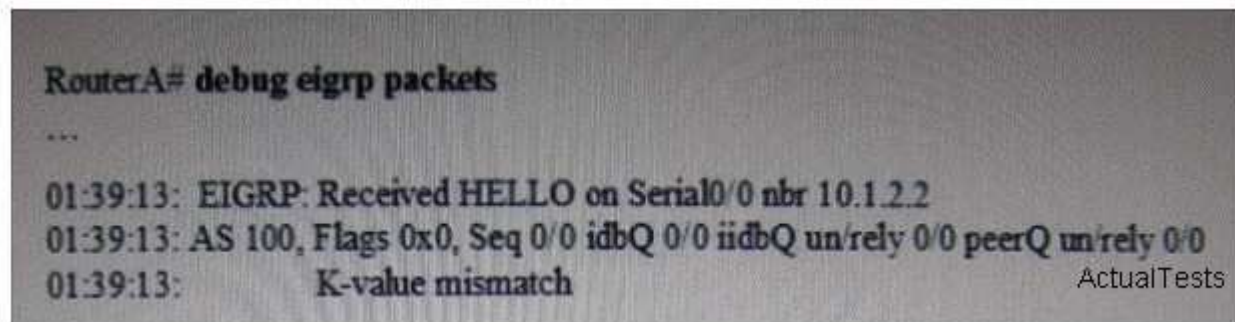
Section: (none)

Explanation

Explanation/Reference:

QUESTION 20

Refer to the exhibit.



A network administrator is troubleshooting an EIGRP connection between Router A and Router B. Given the debug output on Router A, which two statements are true? (Choose two)

- A. Router A received a hello packet with mismatched autonomous system numbers
- B. Router A received a hello packet with mismatching hello timers
- C. Router A received a hello packet with mismatched authentication parameters
- D. Router A received a hello packet with mismatched metric-calculation mechanisms
- E. Router A will form an adjacency with Router B
- F. Router A will not form an adjacency with Router B

Correct Answer: DF

Section: (none)

Explanation

Explanation/Reference:

QUESTION 21

Which three are integrated Smart Applications included with the Cisco Unified Communications 500 series? (Choose three)

- A. Smart Business Suite
- B. Connected Data Protector
- C. Timecard View
- D. Cisco UnifiedCall Connector
- E. Cisco WebEx PhoneConnect
- F. VoiceView Express

Correct Answer: CDE

Section: (none)

Explanation

Explanation/Reference:

QUESTION 22

What should you do first when selecting the appropriate antenna for a wireless deployment?

- A. Determine the shape of the area to be covered

- B. Determine the frequency of the radio
- C. Determine the location of the access point
- D. Determine the direction of the coverage

Correct Answer: B

Section: (none)

Explanation

Explanation/Reference:

QUESTION 23

Which authentication uses biometrics?

- A. password
- B. voice
- C. tokens
- D. certificates

Correct Answer: B

Section: (none)

Explanation

Explanation/Reference:

QUESTION 24

What does understanding the radiation patterns of different antennas types help you to determine when providing wireless coverage in an office building?

- A. the exact number of access points that are needed
- B. the type of antenna to cover a specific area
- C. the size of an area that will be covered
- D. the location of the access points

Correct Answer: C

Section: (none)

Explanation

Explanation/Reference:

QUESTION 25

Which combination of ports is available on the Cisco SPA 8800 voice gateway?

- A. one station port and one trunk port (1xFXS and 1xFXO)
- B. two station ports (2xFXS)
- C. four station ports and four trunk ports (4xFXS and 4xFXO)
- D. eight station ports (8xFXS)

Correct Answer: C

Section: (none)

Explanation

Explanation/Reference:

QUESTION 26

Which three elements can you review when examining the traffic across a network? (Choose three)

- A. VPN connection
- B. packet flows
- C. ACLs
- D. states
- E. connections
- F. firewalls
- G. mainframe

Correct Answer: BCE

Section: (none)

Explanation

Explanation/Reference:

QUESTION 27

How do the Cisco ISR G2 platforms enable the next phase of branch-office evolution?

- A. They allow future enabling of high-bandwidth video and high-availability, through multi-core CPUs and support for high-capacity DSPs.
- B. They integrate multiple processors in one unit to enable rich-media collaboration and virtualization
- C. They feature wire-speed Fast Ethernet for high performance
- D. They offer services through a robust Layer 2 and Layer 3 fixed and stackable switch

Correct Answer: B

Section: (none)

Explanation

Explanation/Reference:

QUESTION 28

What are two differences between medium and large campus network designs? (Choose two)

- A. number of supported devices
- B. types of supported devices
- C. architecture
- D. scalability
- E. networking design

Correct Answer: CD

Section: (none)

Explanation

Explanation/Reference:

QUESTION 29

Which security audit mode allows you to make all recommended security-related configuration changes automatically?

- A. Security Audit wizard
- B. interface management
- C. One-step Lockdown
- D. Cisco Configuration Professional

Correct Answer: C

Section: (none)

Explanation

Explanation/Reference:

QUESTION 30

After configuring VTP, you no longer receive updates as expected. Which command can you use to verify the number of VTP advertisements being transmitted?

- A. show vtp database
- B. show vtp counters
- C. show vtp statistics
- D. show vtp status

Correct Answer: B

Section: (none)

Explanation

Explanation/Reference:

QUESTION 31

Which design phase service component includes the development and documentation of the test case or cases used to verify that a deployed infrastructure meets operational, functional, and interface requirements?

- A. Implementation Plan
- B. Business Plan
- C. Staging Plan
- D. Detailed Design Development
- E. Systems Acceptance Test Plan Development

Correct Answer: E

Section: (none)

Explanation

Explanation/Reference:

QUESTION 32

Using Smart Designs increases the typical deal size by how much?

- A. 2x
- B. 3x
- C. 5x
- D. 10x

Correct Answer: B

Section: (none)

Explanation

Explanation/Reference:

QUESTION 33

How many users are supported on the Cisco Unified Communications models 540 and 560 platforms?

- A. 16 users on the UC540 and 64 users on the UC560
- B. 16 users on the UC540 and 104 users on the UC560
- C. 32 users on the UC540 and 64 users on the UC560
- D. 32 users on the UC540 and 104 users on the UC560

Correct Answer: D

Section: (none)

Explanation

Explanation/Reference:

QUESTION 34

Which two statements best describe the wireless core features set using autonomous access points when implementing repeater topology? (Choose two)

- A. RF overlap between access points should be 10 to 15 percent with unique channels configured
- B. RF overlap between primary and repeater access points should be 10 to 15 percent with the same channel configured
- C. RF overlap between primary and repeater access points should be 50 percent with the same channel configured
- D. RF overlap between primary and repeater access points should be 50 percent with unique channels configured
- E. Clients that are associated with the repeater access point will have 10 to 15 percent less data throughput than clients that are associated with the primary root access point
- F. Clients that are associated with the repeater access point will have 50 percent less data throughput than clients that are associated with the primary root access point

Correct Answer: CF

Section: (none)

Explanation

Explanation/Reference:

QUESTION 35

Which command would you use to run authorization for all commands at the specified privilege level(n)?

- A. aaa authorization command default group tacacs+local
- B. aaa authorization exec default group tacacs+local
- C. aaa authorization enable default group tacacs+enable
- D. aaa authorization group tacacs+local

Correct Answer: A

Section: (none)

Explanation

Explanation/Reference:

QUESTION 36

Which pre-sales SMART Design documents are available to help you implement and install a solution? (Choose three)

- A. Quick Quoting Tool
- B. Small Business Product Guide
- C. Smart Business Communications System
- D. Solution Profile
- E. Overview Presentation
- F. Cisco Configuration Assistant

Correct Answer: BDE

Section: (none)

Explanation

Explanation/Reference:

QUESTION 37

Which receiving antenna has high gain and requires accurate aim at the transmitting antenna?

- A. omnidirectional
- B. Yagi
- C. parabolic
- D. patch

Correct Answer: C

Section: (none)

Explanation

Explanation/Reference:

QUESTION 38

What is the major difference between TACACS+ and RADIUS?

- A. TACAS+ runs in TCP, RADIUS operates in UDP
- B. TACAS+ runs in UDP, RADIUS operates in TCP
- C. RADIUS encrypts the entire body of the access-request packet that is sent from the client to the server, TACAS+ encrypts only the password in the access-request packet
- D. TACACS+ and RADIUS operate on two different protocol layers

Correct Answer: A

Section: (none)

Explanation

Explanation/Reference:

QUESTION 39

Which two WAN interfaces does the Cisco SRP 520 Series support? (Choose two)

- A. Fibre Channel
- B. ADSL2+
- C. senal
- D. Fast Ethernet
- E. passive optical network (PON)

Correct Answer: BD

Section: (none)

Explanation

Explanation/Reference:

QUESTION 40

Which three WAN technologies does the Cisco SR 500 Family support?(Choose three)

- A. Fast Ethernet
- B. Fibre Channel
- C. ADSL
- D. T1
- E. IPv6
- F. SIPtrunking

Correct Answer: ACD

Section: (none)

Explanation

Explanation/Reference:

QUESTION 41

What can be used to troubleshoot complex network and VPN connectivity issues?

- A. NAT
- B. CCP
- C. IPsec
- D. NAC

Correct Answer: B

Section: (none)

Explanation

Explanation/Reference:

QUESTION 42

Where might you go on the Cisco ASDM home page to review graph outputs?

- A. Configuration
- B. Routing
- C. Monitoring
- D. Home

Correct Answer: C

Section: (none)

Explanation

Explanation/Reference:

QUESTION 43

Which three types of ACL would you use to secure traffic on the network? (Choose three)

- A. VLAN
- B. reflexive
- C. packets
- D. dynamic
- E. IPS
- F. firewalls

Correct Answer: ABD

Section: (none)

Explanation

Explanation/Reference:

QUESTION 44

Which two statements are correct about OSPF in a multiarea environment? (Choose two)

- A. OSPF will be default summarize updates between area
- B. OSPF requires the use of the area range configuration command only when nondefault summarization is required
- C. OSPF ABR routers are needed only at the boundary of another OSPF area
- D. OSPF uses wildcard masks in the network statements but subnet masks in the area range statements
- E. OSPF requires that all areas have a least one ASBR

Correct Answer: CD

Section: (none)

Explanation

Explanation/Reference:

QUESTION 45

OSPF routes are being redistributed into EIGRP but they are not showing up in the routing table. What are two possible causes? (Choose two)

- A. CEF has not been enabled
- B. Synchronization has been turned off
- C. Incorrect distribute lists have been configured
- D. No default metric has been configured for EIGRP
- E. The ip classless command is missing
- F. There are mismatched autonomous system numbers

Correct Answer: CD

Section: (none)

Explanation

Explanation/Reference:

QUESTION 46

You are configuring a VLAN and the switch you are using requires that you do so within the VLAN databases. Which command allows you to enter the VLAN databases?

- A. Switch#vlan database
- B. Switch (config) # vlan database
- C. Switch (config-if) # vlan database
- D. Switch (vlan)# vlan database

Correct Answer: A

Section: (none)

Explanation

Explanation/Reference:

QUESTION 47

Which three statements are correct about the IEEE 802.3af Power over Ethernet standard? (Choose three)

- A. It defines a port that acts as a power source to be a PSE
- B. It defines a powered device to be a PDE
- C. It defines how a powered device is detected
- D. It defines three methods of delivering Power over Ethernet to the discovered powered device
- E. It describes five power classes to which a device may belong
- F. It defines power class 0 as being reserved for future use

Correct Answer: ACE

Section: (none)

Explanation

Explanation/Reference:

QUESTION 48

What is the primary purpose of SMB Smart Designs?

- A. assists in locating appropriate resources
- B. provides validated commercial solutions
- C. provides training on products, tools, and solutions
- D. provides a direct support path for any partner issue
- E. provides a step-by-step outline of implementation tasks required

Correct Answer: B

Section: (none)

Explanation

Explanation/Reference:

QUESTION 49

Which of these is the best definition of the Cisco Lifecycle Services approach?

- A. It defines the minimum set of services required to successfully deploy and operate a set of Cisco technologies
- B. It determines how best to price Cisco products
- C. It provides partners with a useful way to leverage Cisco resources
- D. It consists of these phases: plan, deploy, support, and troubleshoot

Correct Answer: A

Section: (none)

Explanation

Explanation/Reference:

QUESTION 50

How are lightweight access points different than autonomous access points?

- A. Lightweight access points are managed individually
- B. Lightweight access points are B, G, N capable
- C. Lightweight access points require external antennas
- D. Lightweight access points require a WLAN controller

Correct Answer: D

Section: (none)

Explanation

Explanation/Reference:

QUESTION 51

Before installing Cisco ASDM, it is important to allow connectivity on the side interface of which device?

- A. ISR
- B. WLC
- C. ASA
- D. Cisco Security MARS

Correct Answer: C

Section: (none)

Explanation

Explanation/Reference:

QUESTION 52

Which two are characteristics of HSSI cables? (Choose two)

- A. HSSI cables use a female, 10-pin, SCSI-II-type connector
- B. The HSSI connector and the HSSI cable are identical
- C. HSSI cables use cable CAB-HSI 1 and cable CAB-HNUL
- D. The HSSI connector and the HSSI cable are similar
- E. The CAB-HUNL is used to connect your router to an external DSU

Correct Answer: CD

Section: (none)

Explanation

Explanation/Reference:

QUESTION 53

Which statement best describes clustering in a small-business wireless network?

- A. automatically configures wireless client devices via Wi-Fi Protected Setup
- B. can get real-time traffic or bandwidth statistics from an access point within a cluster
- C. replicates configuration parameters across access points in the cluster, while optimizing network performance
- D. allows multiple access points to be connected wirelessly, without the need for a wired Ethernet network

Correct Answer: C

Section: (none)

Explanation

Explanation/Reference:

QUESTION 54

What are two uses for USB ports on ISRs? (Choose two)

- A. increased memory capabilities
- B. secure device authentication
- C. bulk flash storage
- D. control over the types of files that can be stored
- E. digital certificate storage

Correct Answer: BC

Section: (none)

Explanation

Explanation/Reference:

QUESTION 55

When troubleshooting poor network performance, which two symptoms would typically be associated with a network layer problem? (Choose two)

- A. Packet loss is more than 30 percent
- B. There is excessive broadcast traffic
- C. There are excessive CRC errors
- D. Pings succeed only part of the time
- E. Slips are detected on WAN interfaces
- F. ARP requests are timing out

Correct Answer: AD

Section: (none)

Explanation

Explanation/Reference:

QUESTION 56

Which screen on the Cisco ASDM home page would you use to see which access list rules are in effect?

- A. NAT
- B. Interfaces
- C. Routing
- D. Security Policy

Correct Answer: D

Section: (none)

Explanation

Explanation/Reference:

QUESTION 57

Which type of antenna is used when coverage in all directions is required?

- A. directional
- B. bidirectional
- C. omnidirectional
- D. patch

Correct Answer: C

Section: (none)

Explanation

Explanation/Reference:

QUESTION 58

Which service should be disabled or filtered via a firewall because an attacker could use the service to download a copy of Cisco IOS software from a router (thereby making the router vulnerable to DOC attacks)?

- A. PAD service
- B. finger service
- C. TCP/UDP
- D. BOOTP

Correct Answer: D

Section: (none)

Explanation

Explanation/Reference:

QUESTION 59

Which two statements best describe the wireless core feature set using autonomous access points when implementing Wireless Domain Services? (Choose two)

- A. Layer 2 and Layer 3 services can be configured in a CiscoAironet autonomous AP or a Cisco Integrated Services Router
- B. Layer 2 services can be configured in a CiscoAironet autonomous AP or a Cisco Integrated Services Router
- C. Layer 2 and Layer 3 services can be configured in a CiscoAironet autonomous AP or controllers
- D. Layer 3 services can be configured in WLSM

E. Layer 3 services can be configured in WLSE

Correct Answer: BD

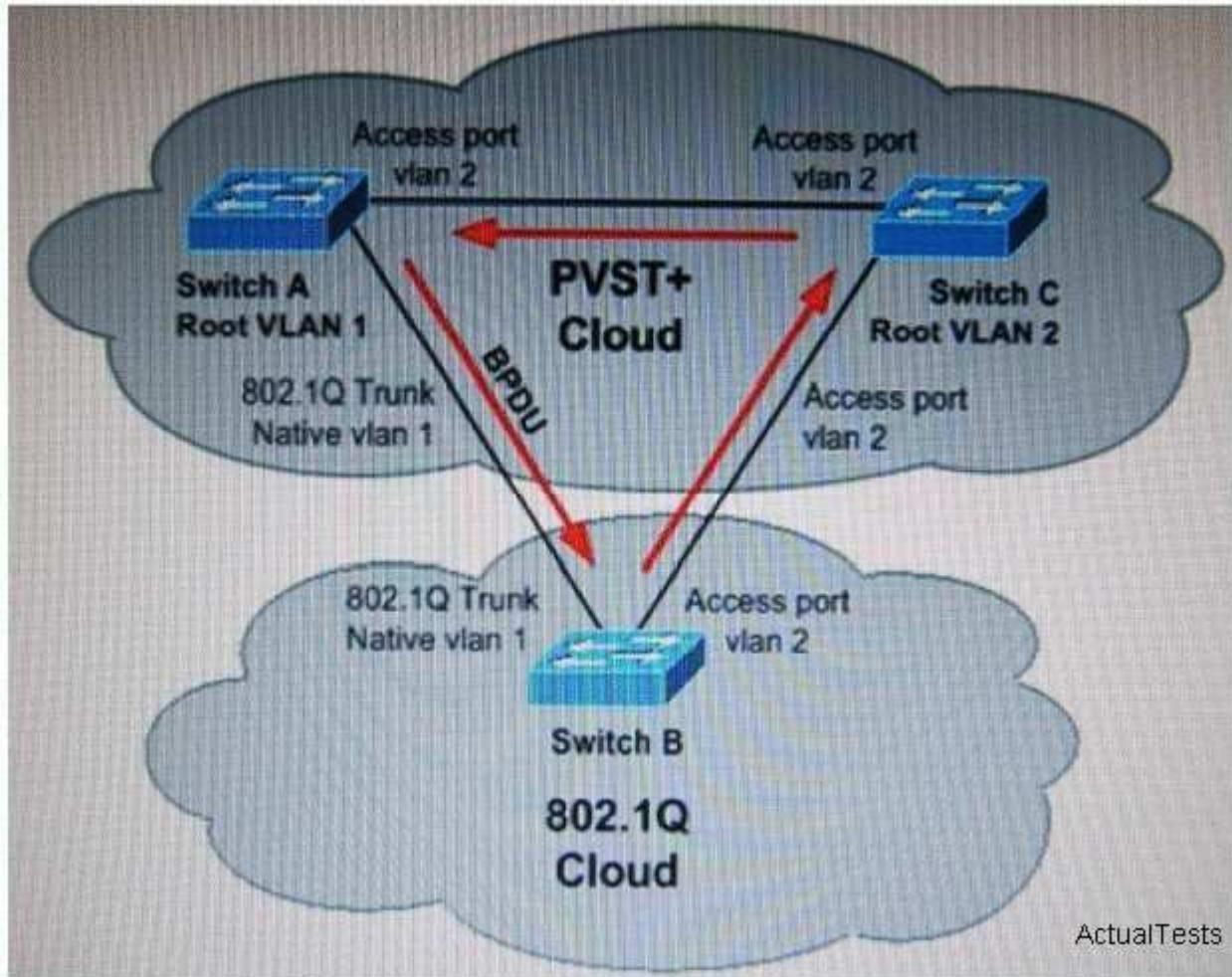
Section: (none)

Explanation

Explanation/Reference:

QUESTION 60

Refer to the exhibit.



Switches A and C are running PVST+ STP, and switch B is running 802.1Q STP, if the BPDU of the root in VLAN 1 is better than the BPDU of the root in VLAN 2, then there is no blocking port in the VLAN 2 topology. The BPDU of VLAN 2 never makes a full circle around the topology, it is replaced by the VLAN 1 BPDU on the B_C link, because B runs only one STP merged with VLAN 1 STP of PVST+. Thus, there is a forwarding loop. What does PVST+ do to correct this?

- A. Switch A sends PVST+ BPDUs of VLAN 2 (to the SSTP address that is flooded by switch B) towards Switch C. Switch C will put port C-B into a type-inconsistent, which prevents the loop
- B. Switch B sends PVST+ BPDUs of VLAN 1 (to the SSTP address that is flooded by switch A) towards Switch C. Switch C will put port C-B into a type-inconsistent, which prevents the loop
- C. Switch C sends PVST+ BPDUs of VLAN 2 (to the SSTP address that is flooded by switch B) towards Switch C. Switch C will put port C-B into a type-inconsistent, which prevents the loop

- D. Switch A sends PVST+BPDUs of VLAN 1 (to the SSTP address that is flooded by switch B) towards Switch B. Switch A will put port C-B into a type-inconsistent, which prevents the loop "Pass Any Exam. Any Time." - www.actualtests.com 21 Cisco 642-384: Practice Exam

Correct Answer: A

Section: (none)

Explanation

Explanation/Reference:

QUESTION 61

What is used to prevent outside resources from accessing private information within the company?

- A. IPsec
- B. VPN
- C. PIN
- D. Firewalls

Correct Answer: D

Section: (none)

Explanation

Explanation/Reference:

QUESTION 62

Which type of security allows visibility into the state of the operating system and is the only way to inspect encrypted traffic?

- A. zero updated architecture
- B. network-based security
- C. endpoint-based security
- D. ACLs

Correct Answer: B

Section: (none)

Explanation

Explanation/Reference:

QUESTION 63

Which two benefits will a client see from adding a Wireless LAN Controller to their Smart Business Communications System? (Choose two)

- A. allow for guest access
- B. increase connection speeds
- C. add additional access points
- D. network management with CLI

Correct Answer: AC

Section: (none)

Explanation

Explanation/Reference:



<http://www.gratisexam.com/>

QUESTION 64

To avoid carrying every length of cable, lightning arrestors, and splitters when performing site surveys, engineers can outfit their survey kits with which item?

- A. Category 5 cable
- B. RP-TNC plug
- C. antenna attenuator
- D. RP-TNC connector

Correct Answer: C

Section: (none)

Explanation

Explanation/Reference:

QUESTION 65

Which two are components of AAA? (Choose two)

- A. access control lists
- B. Cisco IOS Software
- C. Cisco Secure Access Control Server
- D. Security Audit wizard
- E. network access server

Correct Answer: CE

Section: (none)

Explanation

Explanation/Reference:

QUESTION 66

Which three business requirements development activities are performed in the prepare phase before creating a technology strategy? (Choose three)

- A. identifying and assessing customer business requirements
- B. documenting and categorizing customer business requirements in terms of performance, availability, capacity, and security
- C. producing a documented technology strategy
- D. creating a bill of materials
- E. presenting documented business requirements to a customer and having the customer validate them
- F. completing a site survey

Correct Answer: ABE

Section: (none)

Explanation

Explanation/Reference:

QUESTION 67

Which type of VPN is deal for employees who use a home PC or public computer to access the network?

- A. IP secemote access VPN
- B. mobile VPN
- C. dialup Offload VPN
- D. SSL VPN
- E. GET VPN

Correct Answer: D

Section: (none)

Explanation

Explanation/Reference:

QUESTION 68

Which benefit can be obtained by using the change management service component in the operate phase?

- A. reduced operating costs, due to consistent framework for making necessary changes in an efficient and accountable manner
- B. greater accuracy, completeness, and timeliness of network configuration information
- C. notification provided to interested parties regarding problems that have been identified, and a system that scales with customer requirements
- D. improved system service quality and fewer disruptions

Correct Answer: A

Section: (none)

Explanation

Explanation/Reference:

QUESTION 69

Which of the following best describe the customer benefits of change management in the operate phase?

- A. reduce unnecessary disruption, delays, rework, and other problems by establishing test cases for use in verifying that the system meets operational, functional, and interface requirements
- B. improve its ability to make sound financial decisions by developing a business case based on its business requirements and establishing a basis for developing a technology strategy
- C. reduce operating costs and limit change related incidents by providing a consistent and efficient set of processes
- D. improve the return on investment and hasten migration by identifying and planning for necessary infrastructure changes and resource additions, as well as reduce deployment costs by analyzing gaps early in the planning process to determine what is needed to support the system

Correct Answer: C

Section: (none)

Explanation

Explanation/Reference:

QUESTION 70

What two types of telephony interfaces are used for PSTN connectivity? (Choose two.)

- A. Digital
- B. Optical
- C. Analog
- D. CDMA

Correct Answer: AC

Section: (none)

Explanation

Explanation/Reference:

QUESTION 71

Which statement correctly describes the keys witch model of deployment for call processing?

- A. All IP Phones are able to answer any incoming PSTN call on any line
- B. PSTN calls are routed through a receptionist or automated attendant.
- C. All IP Phones in the system have a single unique extension number.

Correct Answer: A

Section: (none)

Explanation

Explanation/Reference:

QUESTION 72

Which definition best describes the implementation service component within the implement phase?

- A. providing a step-by-step plan that details the installation and service commission tasks required in order to create a controlled implementation environment that emulates a customer network
- B. assessing the ability of site facilities to accommodate proposed infrastructure changes
- C. developing and executing proof-of-concept tests, validating high-level infrastructure design, and identifying any design enhancements
- D. Installing, configuring and integrating systems components based on an implementation plan developed in earlier phases
- E. improving a customer's infrastructure security system

Correct Answer: D

Section: (none)

Explanation

Explanation/Reference:

QUESTION 73

A customer with a small enterprise network of 15 remote sites is trying to optimize its VPN by migrating some remote sites using Frame Relay connections to the Internet to using cable connections to the Internet. Minimizing costs is one of the customer's highest priorities. Only a moderate amount of IP traffic is passing through the network, most of which is from the remote sites to the central site. IPSec should be used to provide VPN functionality and basic confidentiality is desired.

Based on the traffic patterns, which topology would be the easiest for this customer to set up and manage?

- A. full mesh
- B. partial mesh
- C. point-to-multipoint
- D. hub and spoke

Correct Answer: D

Section: (none)

Explanation

Explanation/Reference:

QUESTION 74

How can the proper configuration of Voice Mail be tested at an end user's IP phone?

- A. Press the "i" button.
- B. Press the "Settings" button.
- C. Press the "Services" button.
- D. Press the "Messages" button

Correct Answer: D

Section: (none)

Explanation

Explanation/Reference:

QUESTION 75

In what location is it recommended that the Cisco Catalyst 6500 Series WLSM be placed?

- A. distribution layer
- B. core layer
- C. access layer
- D. network management functional module

Correct Answer: A

Section: (none)

Explanation

Explanation/Reference:

QUESTION 76

Which of these is an accurate list of Cisco Lifecycle Services phases?

- A. initiation, planning, analysis, design, development, implementation, operations and maintenance
- B. project planning, site assessment, risk assessment, solution selection and acquisition, testing, and operations
- C. Prepare, plan design implement operate, and optimize
- D. analysis, design, deployment, testing, implementation, and production I E. presales, project planning, development, implementation, operations testing, and operations sign-off

Correct Answer: C

Section: (none)

Explanation

Explanation/Reference:

QUESTION 77

What port role assignment would you make for the Gigabit Ethernet port on the Cisco CE520 used in the Smart Business Communications System?

- A. IP Phone and desktop
- B. Cisco UC520
- C. Cisco CE520
- D. Cisco 871W

Correct Answer: B

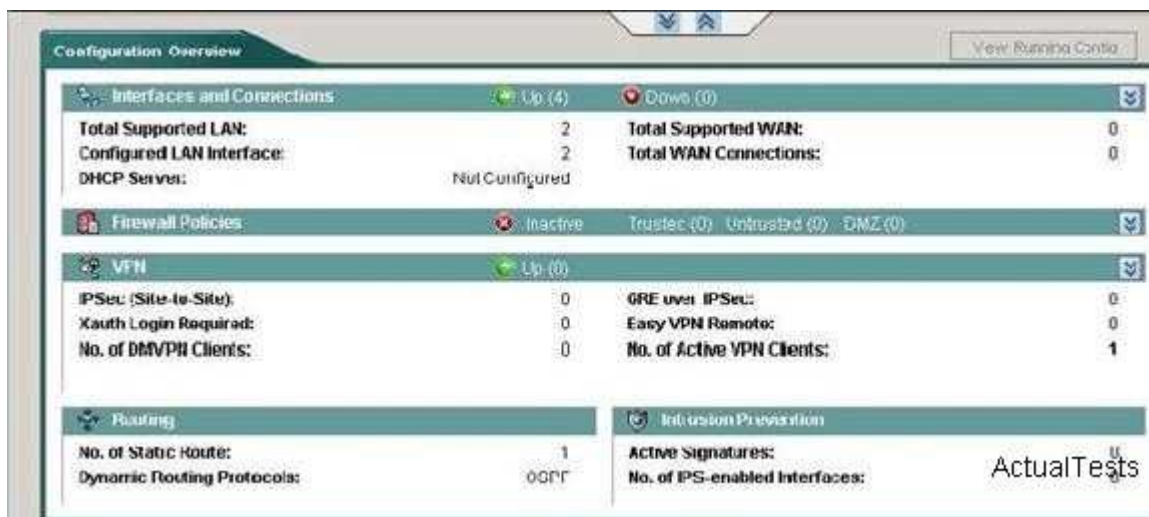
Section: (none)

Explanation

Explanation/Reference:

QUESTION 78

This item consists of one or more multiple choice type questions that you must answer. To answer these questions, you need to use a GUI tool that becomes fully accessible by the use of the labs you see below these directions. The tabs have up and down arrows to signal the direction that the tabbed window may be dragged to expose or hide the GUI tool. When you are done using the GUI tool, you may drag the tab down to continue answering questions. To advance to the next question in the series, click on the numbered button to the left of each question. Make sure that you have answered all the questions before continuing to the next item.



Which method list and method is used to authenticate the remote access VPN users? (Choose two.)

- A. sdm_vpn_xauth_ml_1
- B. sdm_vpn_group_ml_1
- C. SDM_CMAP_1
- D. local database on the ISR
- E. remote TACACS+ server
- F. remote Radius Server

Correct Answer: AD

Section: (none)

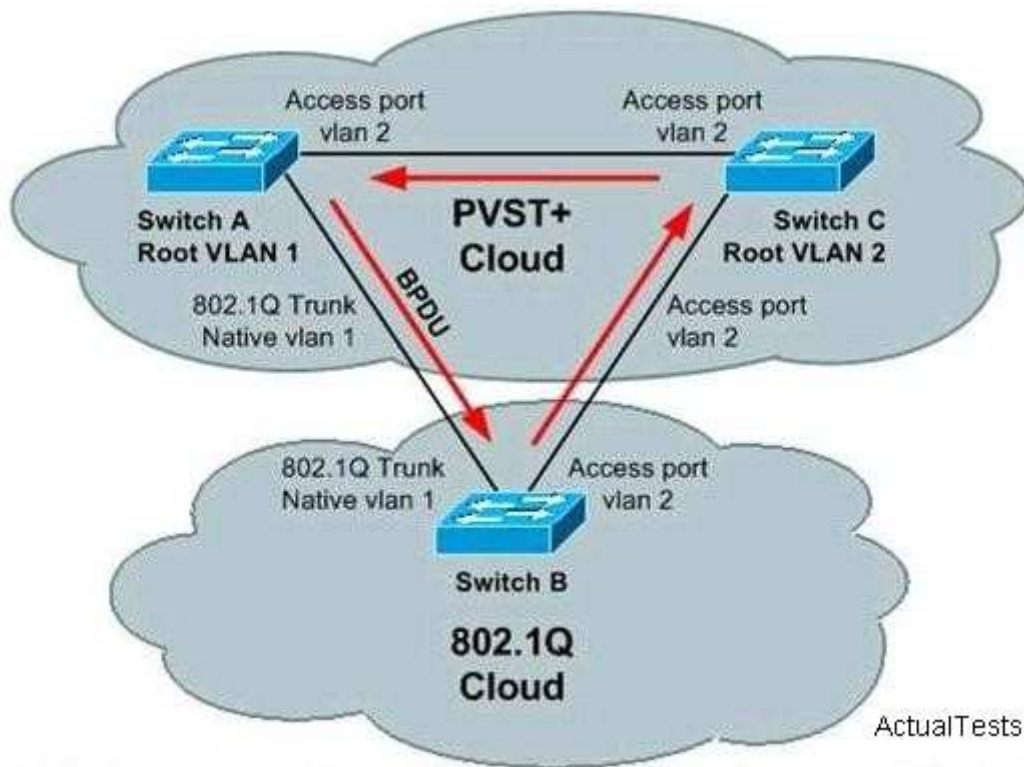
Explanation

Explanation/Reference:

QUESTION 79

Refer to the exhibit. Switches A and C are running PVST+ STP, and Switch B is running 802.1Q STP. If the BPDU of the root in VLAN 1 is better than the BPDU of the root in VLAN 2, then there is no blocking port in the VLAN topology. The BPDU of VLAN 2 never makes a "full circle" around the topology; it is replaced by the VLAN 1 BPDU on the B. C link, because B runs only one STP merged with VLAN 1 STP of PVST+. Thus, there is a forwarding loop.

What does PVST+ do to correct this?



- A. Switch A sends PVST+ BPDUs of VLAN 2 (to the SSTP address that is flooded by Switch B) towards Switch C. Switch C will put port C.B into a typeE.inconsistent state, which prevents the loop.
- B. Switch B sends PVST+ BPDUs of VLAN 1 (to the SSTP address that is flooded by Switch A) towards Switch C. Switch C will put port C.B into a typeE.inconsistent state, which prevents the loop.
- C. Switch C sends PVST+ BPDUs of VLAN 2 (to the SSTP address that is flooded by Switch B) towards Switch C. Switch A will put port C.B into a typeE.inconsistent state, which prevents the loop.
- D. Switch A sends PVST+ BPDUs of VLAN 1 (to the SSTP address that is flooded by Switch B) towards Switch B. Switch A will put port C.B into a typeE.inconsistent state, which prevents the loop. Switch B sends PVST+ BPDUs of VLAN 1 (to the SSTP address that is flooded by Switch A) towards Switch C. Switch C will put port C.B into a typeE.inconsistent state, which prevents the loop.
- E. Switch C sends PVST+ BPDUs of VLAN 2 (to the SSTP address that is flooded by Switch B) towards Switch C. Switch A will put port C.B into a typeE.inconsistent state, which prevents the loop.
- F. Switch A sends PVST+ BPDUs of VLAN 1 (to the SSTP address that is flooded by Switch B) towards Switch B. Switch A will put port C.B into a typeE.inconsistent state, which prevents the loop.

Correct Answer: B

Section: (none)

Explanation

Explanation/Reference:

QUESTION 80

What are two ways to test the LAN connectivity on the Cisco CE520? (Choose two.)

- A. Ping the IP address of the Cisco-Data Access VLAN from the Cisco UC520 console.
- B. Ping the IP address of the Cisco-Data VLAN from a device attached to the Cisco CE520.
- C. Ping default gateway from the Cisco UC520.
- D. Ping the IP address of the Cisco-voice VLAN from a device attached to the Cisco CE520.
- E. Ping default gateway from the Cisco CE520.
- F. Ping the IP address of the Cisco-Distribution VLAN from the Cisco UC520 console.

Correct Answer: BD

Section: (none)

Explanation

Explanation/Reference:

QUESTION 81

Which statement correctly describes configuration of the VPN server?

- A. It requires definition of a Group ID for remote clients.
- B. It requires configuration of port settings for the VPN server on the Cisco UC520.
- C. It uses a shared Key for remote device authentication.
- D. The WAN interface is preselected.

Correct Answer: C

Section: (none)

Explanation

Explanation/Reference:

QUESTION 82

In a new Cisco UC520 installation, when must IP routing be configured?

- A. When the service provider assigns static IP information.
- B. When the service provider assigns dynamic IP information.
- C. When analog PSTN trunks are used.
- D. When digital PSTN trunks are used.

Correct Answer: A

Section: (none)

Explanation

Explanation/Reference:

QUESTION 83

Which critical issue should you account for when implementing an integrated network security management design?

- A. NAT interoperates with encrypted voice traffic
- B. host-based intrusion detection systems reside in the network
- C. All network devices are time synchronized
- D. SNMP community read-write strings are configured to allow for total management access

Correct Answer: C

Section: (none)

Explanation

Explanation/Reference:

QUESTION 84

To save time during rediscovery, which three types of device information does Cisco Configuration Assistant retain? (Choose three.)

- A. IP Address
- B. MAC Address
- C. Host Name
- D. Communication Protocol
- E. Port Settings
- F. Topology

Correct Answer: ACD

Section: (none)

Explanation

Explanation/Reference:

QUESTION 85

Which dial plan scenario may require PSTN trunks for outbound calls?

- A. All the employees, the auto attendant or receptionist, and the voiceE-mail system have direct inward dial numbers using analog trunks.
- B. A subset of the employees, the auto attendant or receptionist, and the voiceE-mail system have direct inward dial numbers, and the remaining employees do not have direct inward dial numbers.
- C. All the employees, the auto attendant or receptionist, and the voiceE-mail system have direct inward dial numbers using digital interfaces.

Correct Answer: A

Section: (none)

Explanation

Explanation/Reference:

QUESTION 86

What are two configurable options for Call Control on the Cisco UC520? (Choose two.)

- A. Shared Key
- B. PBX

- C. Key System
- D. Encryption
- E. Call Waiting

Correct Answer: BC

Section: (none)

Explanation

Explanation/Reference:

QUESTION 87

Refer to the Exhibit. According to Cisco VPN Client Software output Shown, Which two Statement are correct about the connection entry named isr? (Choose Two)



- A. HMAC.SHA1 is used to authenticate the remote users.
- B. Preshared key is used to authenticate the remote peer

- C. AES is used to provide data confidentiality.
- D. The Cisco VPN Client software is assigned an internal IP address of 192.168.1.1.
- E. The PC that is running the Cisco vpn Client software will not have access to the local LAN once the PC is connected into the VPN

Correct Answer: BE

Section: (none)

Explanation

Explanation/Reference:

"Pass Any Exam. Any Time." - www.actualtests.com 35 Cisco 642-384: Practice Exam

QUESTION 88

Refer to the exhibit. According to the Cisco Adaptive Security Device Manager window, which statement about address translation is correct?

☐ Enable traffic through the firewall without address translation

☒ Translation Rules ☐ Translation Exemption Rules

Show Rules for Interface: All Interfaces Show All

Rule	Original			Translated	
Type	Interface	Source Network	Destination	Interface	Address
Static NAT	dmz1	ftp_host 172.16.1.2	any	outside	192.168.1.11
Static NAT	inside	inside host 10.0.1.11	any	outside	192.168.1.10
Static NAT	dmz2	www_server 172.16.10.2	any	outside	192.168.1.12
Static NAT	dmz2	www_server 172.16.10.2	any	dmz1	172.16.1.22
Dynamic NAT	inside	inside: any/0	any	outside	192.168.1.20-192.168.1.94
Dynamic NAT	dmz1	172.16.1.0/24	any	outside	192.168.1.20-192.168.1.94

Static NAT Dynamic NAT Static Policy NAT Dynamic Policy NAT

- A. Using Network Address Translation, any host on the DMZ1 subnet (172.16.1.0) will be translated to a mapped address on the outside interface of 192.168.1.11. I
- B. Using port address translation, DMZ2 host 172.16.10.2 will be translated on DMZ1 to IP address 172.16.1.22 with a dynamically assigned port address.
- C. Using Network Address Translation host 10.0.1.10 on the inside network will be dynamically translated to a mapped address from the address pool of 192.168.1.20 to 192.168.1.94.
- D. Using port address translation, outside host 192.168.1.10 with a dynamically assigned port address will be translated to 10.0.1.11 on the inside interface.

Correct Answer: C

Section: (none)

Explanation

Explanation/Reference:

QUESTION 89

Which two are benefits of installing Cisco Monitor Director at an SMB site for the partner selling the solution?

(Choose two.)

- A. simplifies Smart Business Communications System installation
- B. allows the end customer to get free software updates
- C. monthly recurring revenue mode
- D. automated monthly reporting on system performance

Correct Answer: CD

Section: (none)

Explanation

Explanation/Reference:

QUESTION 90

Which Cisco Catalyst Express 520 feature optimizes quality of service?

- A. Cisco Configuration Assistant
- B. Cisco Smart ports
- C. Cisco Network Admission Control
- D. Cisco Smart Assist

Correct Answer: B

Section: (none)

Explanation

Explanation/Reference:

QUESTION 91

Refer to the exhibit. This display has been truncated to remove information that is not relevant to the question. What would be a reason that there have been 21 ignored packets?

```
router#show interfaces ethernet 0/0
Ethernet0/0 is up, line protocol is up
...
21 input errors, 0 CRC, 0 frame, 0 overrun, 21 ignored
```

ActualTests

- A. Ethernet0 has no CDP neighbors.
- B. There are no free input buffers to accept new packets
- C. There are no free output buffers for packets, which are traversing the router, to go into for transmission.
- D. Ethernet0 and the neighbor that it is connected to are not running the same routing protocol.
- E. This is not a valid error display. The display has been modified to show that there have been ignored packets.

Correct Answer: B

Section: (none)

Explanation

Explanation/Reference:

QUESTION 92

You enter the command show ip ospf neighbor and see "two-way/DROTHER" listed as the state for neighbor

10.1.1.1. What does this status indicate?

- A. The neighbor 10.1.1.1 is not a DR or BDR
- B. The neighbor relationship with 10.1.1.1 has not yet completed.
- C. DR and BDR election is in progress.
- D. The neighbor 10.1.1.1 is the BDR.

Correct Answer: A

Section: (none)

Explanation

Explanation/Reference:

QUESTION 93

Which implement phase service component consists of explaining the benefits and limitations of purchased support options to a customer and ensuring that the customer understands operational processes and responsibilities?

- A. Staging and System Migration
- B. Post Implementation Support Handoff Meeting
- C. Detailed Design Development
- D. Staff Training

Correct Answer: B

Section: (none)

Explanation

Explanation/Reference:

QUESTION 94

How many voice expansion slots are provided by the Cisco UC520?

- A. One
- B. two
- C. three
- D. four

Correct Answer: A

Section: (none)

Explanation

Explanation/Reference:

QUESTION 95

A concern has been expressed that the switched infrastructure in an integrated network is vulnerable to VLAN hopping attacks. Which two configuration statements can be used to mitigate VLAN hopping? (Choose two.)

- A. switch port port-security
- B. switch port port-security tagging
- C. switch port access vlan
- D. switch port double tag snooping
- E. switch port mode access

Correct Answer: CE

Section: (none)

Explanation

Explanation/Reference:

QUESTION 96

Which network management tool is designed to allow businesses to manage up to 40 devices?

- A. Cisco Works Unrestricted
- B. Cisco Works SNMS
- C. Campus Manager
- D. Resource Management Essentials

Correct Answer: B

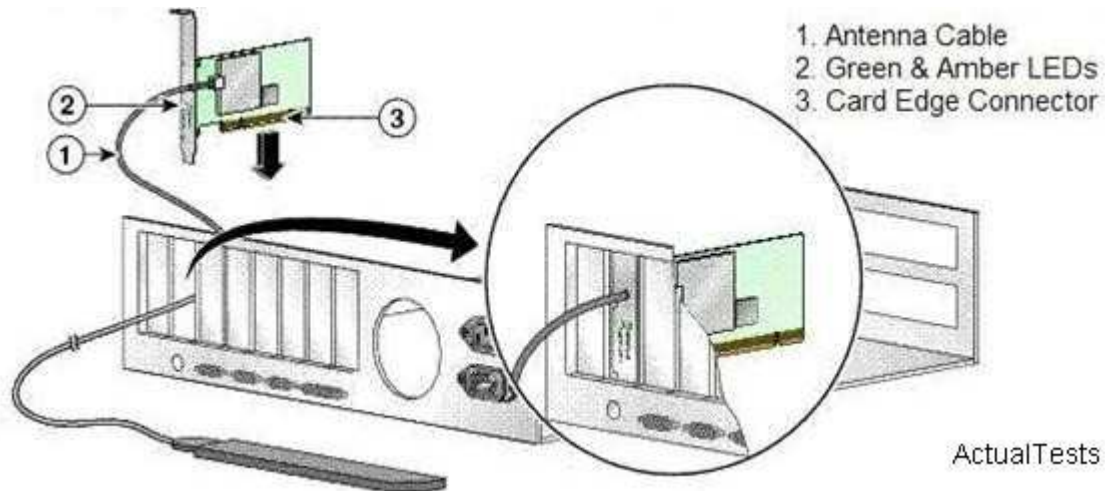
Section: (none)

Explanation

Explanation/Reference:

QUESTION 97

:Refer to the exhibit. The Cisco Aironet 802.11a/b/g Wireless LAN Client Adapter has two LEDs. Which two LED states indicate that the card is associated to an access point and is working properly? (Choose two.)



- A. green LED off; amber LED solid
- B. green LED off; amber LED blinking sporadically
- C. green LED blinking quickly; amber LED blinking quickly
- D. green LED blinking slowly; amber LED blinking slowly
- E. green LED blinking slowly; amber LED blinking quickly

Correct Answer: CD

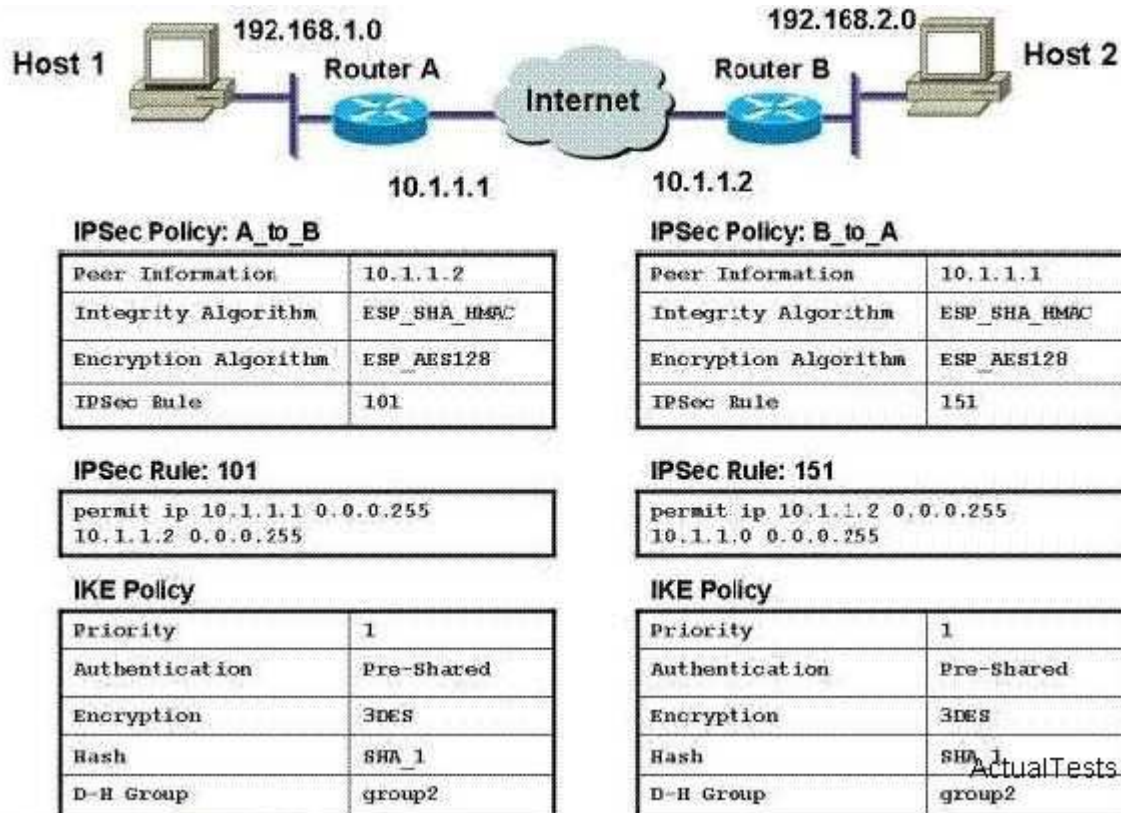
Section: (none)

Explanation

Explanation/Reference:

QUESTION 98

Refer to the exhibit. The tables contain information from the Cisco Router and Security Device Manager configuration of Router A and Router B. Traffic between Host 1 and Host 2 is not successfully establishing the site-to-site VPN between Router A and Router B. What is the mostly likely cause of this fault?



- A. The IPsec and IKE encryption methods do not match. They all have to be either 3DES or AES.
- B. Router A is using a standard IP ACL (100-149) while Router B is using a turbo ACL (150-199).
- C. The D.H Group settings on the two routers are set to group 2. They must be set to group 1 for SHA. 1.
- D. The IPsec policy map names on the two routers do not match. They must be the same on both routers.
- E. The IPsec rules on the two routers are not permitting the correct interesting traffic

Correct Answer: E

Section: (none)

Explanation

Explanation/Reference:

QUESTION 99

Which two statements best describe the wireless implementation of Cisco Aironet root and non-root bridging? (Choose two.)

- A. Point-to-point access points can be used if one is root and the other is non-root.
- B. WGB can be used with an access point if the distance is less than one mile
- C. Root mode must be enabled only on one side in a point-to-point link to interoperate with other vendors and comply with 802.11
- D. Up to 17 non-root bridges can associate to a root bridge

- E. Point-to-point WGB can be used if total number of PCs is fewer than eight. The neighbor 10.1.1.1 is the BDR

Correct Answer: BD

Section: (none)

Explanation

Explanation/Reference:

QUESTION 100

The customer wants to implement wireless security through implementation of WPAv2. Which component of WPAv2 would limit the rollout because of the continued use of old access points?

- A. 48-bit IV
- B. AES
- C. TKIP
- D. MIC

Correct Answer: B

Section: (none)

Explanation

Explanation/Reference:

QUESTION 101

A company needs to provide site-to-site VPN, remote access VPN, and firewall protection. Which device best supports all three functions?

- A. Cisco PIX
- B. Cisco ASA
- C. Cisco Concentrator
- D. Cisco Router and Security Device Manager

Correct Answer: B

Section: (none)

Explanation

Explanation/Reference:

QUESTION 102

Which two features are only supported when using the Cisco Router and Security Device Manager (SDM) Advanced Firewall wizard and not supported when using the Cisco SDM Basic Firewall wizard? (Choose two.)

- A. deep-packet inspections
- B. IP unicast Reverse Path Forwarding on the outside (untrusted) interface
- C. DMZ services
- D. Custom inspection rules
- E. proxy authentication

Correct Answer: CD

Section: (none)

Explanation

Explanation/Reference:

QUESTION 103

Which command can be used to verify that RIPv2 is running on a router?

- A. show startup-config
- B. show ip route
- C. showip route rip
- D. Show ip protocols

Correct Answer: D

Section: (none)

Explanation

Explanation/Reference:

QUESTION 104

You have just configured and enabled the Cisco IOS Firewall feature set from a remote location using the Cisco Router and Security Device Manager (SDM) Firewall wizard. You later want to double-check your configuration using Cisco SDM. However, you find that you can no longer connect to the Cisco IOS Firewall using Cisco SDM.

What is the probable cause of this failure?

- A. You must additionally specify the Cisco SDM management port number to gain access when the configuration has been applied.
- B. You have not generated an RSA key pair between the host and device to allow secure access via Cisco SDM.
- C. You have been locked out via access lists that have been applied to the router as a result of your Cisco SDM configuration.
- D. You must specify the host IP address of Cisco SDM in the Configuration panel for allowed management connections.

Correct Answer: C

Section: (none)

Explanation

Explanation/Reference:

QUESTION 105

An 802.11 b telephone is receiving an audio signal from an access point, but cannot send audio. What is a possible cause?

- A. the RSSI value on the telephone is greater than 35.
- B. The access point is set to receive only at 802.11g data rates.
- C. The security settings in the telephone do not match the settings in the access point.
- D. The transmit power in the telephone is significantly lower than the transmit power in the access point.

Correct Answer: D

Section: (none)

Explanation

Explanation/Reference:

QUESTION 106

Users logging into Cisco Router and Security Device Manager should be authenticated using the Cisco ISR local user database. Currently, none of the users can access Cisco Router and Security Device Manager via HTTP. You should check the configuration of which command or commands when attempting to resolve this problem?

- A. There is no ip http secure-server
- B. There is ip http authentication local
- C. There is line vty 0 5 login local
- D. There is aaa new-model

Correct Answer: B

Section: (none)

Explanation

Explanation/Reference:

QUESTION 107

When using Cisco Router and Security Device Manager to configure AAA login authentication policies, which four methods are available? (Choose four.)

- A. group RADIUS: use a list of RADIUS hosts
- B. group TACACS+ use a list of TACACS+ hosts
- C. enable: use enable password
- D. otp: use one.time password
- E. local use local database
- F. default: use line password

Correct Answer: ABCE

Section: (none)

Explanation

Explanation/Reference:

QUESTION 108

A North American customer is using 2.4-GHz radios in a point-to-point configuration. The radio power level is 17 dBm and is transmitting at 11 Mbps. The customer is using 21.5-dBi dish antennas and 50 feet of cabling, with a loss of 8.4 dB per 100 feet. The customer increased the distance between the transmitter stations and began experiencing link problems.

Without using a professional installer, which step should the customer take to fix the situation?

- A. Use a cable with a lower loss.
- B. Upgrade to an 802.11a radio.
- C. Install a higher gain antenna.
- D. Increase the transmitter power.

Correct Answer: A

Section: (none)

Explanation

Explanation/Reference:

QUESTION 109

A user is unable to connect to the Cisco Router and Security Device Manager via HTTPS. Which two of these might have caused this problem? (Choose two.)

- A. Theip https server command is missing from the running configuration.
- B. The ip http secure server command is missing from the running configuration
- C. The user is trying to launch Cisco Router and Security Device Manager from the inside (secured) interface with a firewall enabled.
- D. The user has a privilege level lower than 15.
- E. The browser security level is set too high.

Correct Answer: BD

Section: (none)

Explanation

Explanation/Reference:

QUESTION 110

Which command assigns a cost value of "17" to a switch port?

- A. spanning-tree interfacefastethernet 5/8 17
- B. spanning-treeportcost 17
- C. spanning-treeportcost 17
- D. spanning-treevlan 1 cost 17

Correct Answer: D

Section: (none)

Explanation

Explanation/Reference:

QUESTION 111

You have configured and applied a Cisco IOS Firewall access rule to the inbound, untrusted interface. You suspect that the rule may be blocking necessary traffic onto the network. What must you do to delete that rule when using Cisco Router and Security Device Manager?

- A. Select ACL Editor > Access Rules to delete the rule.
- B. You must remove the association between the rule and the interface before deleting the rule
- C. You must delete the associated access list on the interface, then reconfigure the access list as required, and then reapply the access group to the proper interface.
- D. Go to the Edit Firewall Policy tab to delete the rule.

Correct Answer: B

Section: (none)

Explanation

Explanation/Reference:

QUESTION 112

A customer in Europe needs to establish an 11-Mbps wireless bridge link between two office buildings that are

approximately 1.3 km apart. The wireless link will pass through a public park, which contains a lake that is surrounded by trees. You run the range calculation and determine that the Cisco Aironet 1300 Series Outdoor Access Point/Bridge should work. You install the link using 10.5-dB yagis with 75 feet of standard Cisco cabling and both radios set at 20 mW. The wireless bridges are not able to establish or maintain a link.

What is needed to successfully complete this link?

- A. An amplifier needs to be installed at one of the sites.
- B. The antenna must be raised high enough to clear the trees
- C. Lower loss cabling needs to be used to bring the EIRP into legal limits.
- D. Due to the trees, a 21-dBi dish needs to be used for its narrower beam width.

Correct Answer: B

Section: (none)

Explanation

Explanation/Reference:

QUESTION 113

You connect via Telnet to a Cisco access point and enter the command `show dot11 link test`. Which output might you obtain?

- A. signal-to-noise ratio
- B. incoming and outgoing signal strength
- C. TX packets dropped
- D. RX packets per second

Correct Answer: B

Section: (none)

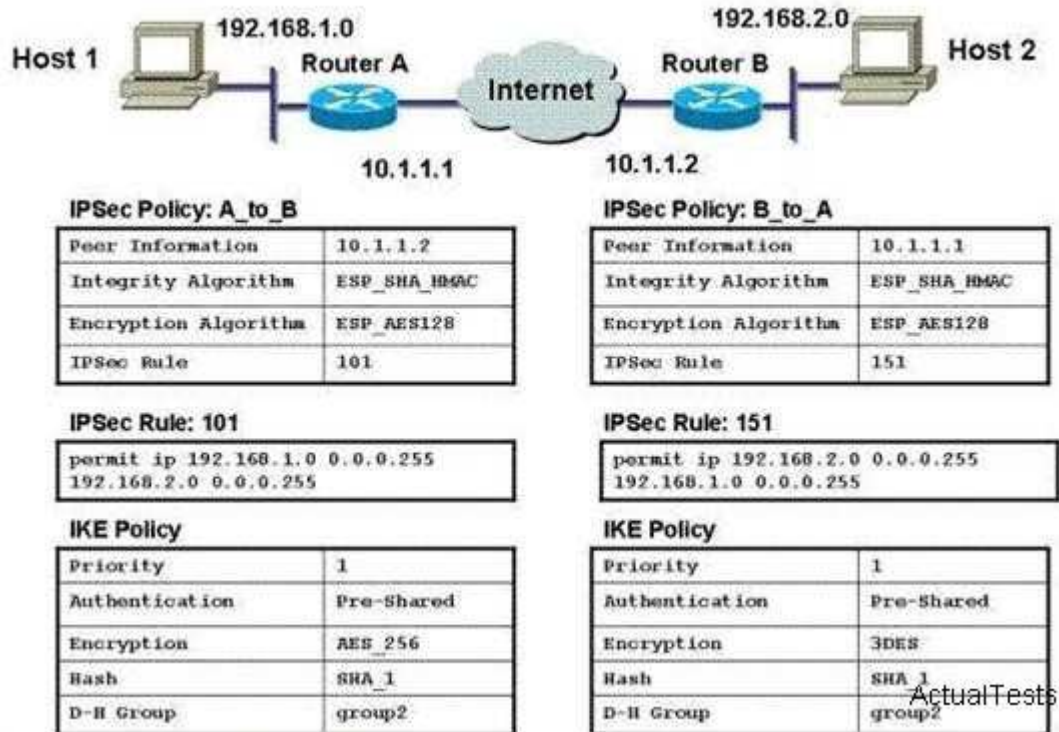
Explanation

Explanation/Reference:

QUESTION 114

Refer to the exhibit. The tables contain information from the Cisco Router and Security Device Manager configurations of Router A and Router B. Traffic between Host 1 and Host 2 is not successfully establishing the site-to-site VPN between Router A and Router B.

What is the mostly likely cause of this fault?



- A. Router A is using a standard IP ACL (100-149) while Router B is using a Turbo ACL (150-199).
- B. The IKE encryption methods on the two routers are different
- C. the IPsec policy map names on the two routers are different.
- D. the IPsec rules on the two routers are not permitting the Answer: interesting traffic.

Correct Answer: B

Section: (none)

Explanation

Explanation/Reference:

QUESTION 115

This item consists of one or more multiple choice type questions that you must answer. To answer these questions, you need to use a GUI tool that becomes fully accessible by the use of the labs you see below these directions. The tabs have up and down arrows to signal the direction that the tabbed window may be dragged to expose or hide the GUI tool. When you are done using the GUI tool, you may drag the tab down to continue answering questions. To advance to the next question in the series, click on the numbered button to the left of each question. Make sure that you have answered all the questions before continuing to the next item.



How many active VPN clients are currently connected to the 1841 ISR router?

- A. 0
- B. 1
- C. 2
- D. 3
- E. 4
- F. 5

Correct Answer: B

Section: (none)

Explanation

Explanation/Reference:

QUESTION 116

This item consists of one or more multiple choice type questions that you must answer. To answer these questions, you need to use a GUI tool that becomes fully accessible by the use of the labs you see below these directions. The tabs have up and down arrows to signal the direction that the tabbed window may be dragged to expose or hide the GUI tool. When you are done using the GUI tool, you may drag the tab down to continue answering questions. To advance to the next question in the series, click on the numbered button to the left of each question. Make sure that you have answered all the questions before continuing to the next item.



Which IP address or address range will be used when allocating an internal IP address to the VPN clients for the "test" VPN group?

- A. 10.1.1.100 to 10.1.1.200
- B. 10.1-1.2 to 10.1.1.254
- C. 192.168.1.1 to 192.168.1.100
- D. 192.168.1.2 to 192.168.1.254
- E. 192.168.1.1
- F. 192.168.1.2

Correct Answer: A

Section: (none)

Explanation

Explanation/Reference:

QUESTION 117

This item consists of one or more multiple choice type questions that you must answer. To answer these questions, you need to use a GUI tool that becomes fully accessible by the use of the labs you see below these directions. The tabs have up and down arrows to signal the direction that the tabbed window may be dragged to expose or hide the GUI tool. When you are done using the GUI tool, you may drag the tab down to continue answering questions. To advance to the next question in the series, click on the numbered button to the left of each question. Make sure that you have answered all the questions before continuing to the next item.



Which authentication method is used by the test" VPN group?

- A. RSA Encrypted Nounce
- B. RSA Digital Signature
- C. PrE.Shared Key
- D. Digital Certificate
- E. DH2

Correct Answer: C

Section: (none)

Explanation

Explanation/Reference:

QUESTION 118

In an infrastructure based on a wireless advanced feature set using lightweight access points, by which method is a rogue contained?

- A. The WCS sends excessive traffic to the rogue thus overloading the access point.
- B. The rogue MAC address is used to spoof broadcastdeassociation packets.
- C. The rogue MAC address is used to spoof broadcastdeauthentication packets.
- D. The WCS sends out excessive signals on the same channel when the rogue is detected.

Correct Answer: C

Section: (none)

Explanation

Explanation/Reference:

QUESTION 119

The Cisco Lifecycle Services approach defines the activities needed to help you successfully deploy and operate Cisco technologies and optimize their performance throughout the lifecycle of your network. Which statement is an accurate list of Cisco Lifecycle Services phases?

- A. initiation, prepare, plan, design, implement, operate, and optimize
- B. site assessment, risk assessment, solution selection and acquisition, testing, and operations

- C. prepare, plan, design, implement, operate, and optimize
- D. deployment, testing, implementation, and production

Correct Answer: C

Section: (none)

Explanation

Explanation/Reference:

QUESTION 120

A network administrator is troubleshooting an EIGRP connection between RA and RB. Given the debug output on RA, which two statements are true?(Choose two)

- A. RA received a hello packet with mismatched hello timers.
- B. RA received a hello packet with mechanisms.
- C. RA will form an adjacency with RB.
- D. RA will not form an adjacency with RB.

Correct Answer: BD

Section: (none)

Explanation

Explanation/Reference:

QUESTION 121

A wireless autonomous 1200 access point running core feature set in root mode has its SSID set to Factory_floor and provides connection to a repeater access point with its SSID set to factory_floor, if the root-mode access point is using channel 11 which channel will the repeater access point use?

- A. channel 11
- B. channel 1 or 6
- C. any nonoverlapping channel
- D. The root access point and the repeater will negotiate this setting

Correct Answer: A

Section: (none)

Explanation

Explanation/Reference:

QUESTION 122

The VPN server uses a preshared key for remote device authentication

- A. TRUE
- B. FALSE

Correct Answer: A

Section: (none)

Explanation

Explanation/Reference:

QUESTION 123

A customer with a large enterprise network wants to allow employees to work from home over the Internet. The customer anticipates a large amount of traffic, predominantly toward the central site. The customer also requires a VPN using strong user authentication and encryption to protect highly sensitive data. Which solution best meets this customer's requirements?

- A. remote-access VPN with software encryption
- B. remote-access VPN with hardware encryption
- C. site-to-site VPN with hub-and-spoke tunnels using 3DES and pre-shared secrets
- D. site-to-site Cisco Easy VPN

Correct Answer: B

Section: (none)

Explanation

Explanation/Reference:

QUESTION 124

A client is experiencing lower throughput and more packet retransmits in one area of the wireless network. At these times, the client utility shows high signal strength but low signal quality. What may be causing this issue?

- A. The client does not support Cisco Compatible Extensions version 2.
- B. Diversity is not enabled in the access point.
- C. The WDS is failing to register the client card in the WLSM.
- D. The channel is set incorrectly in the access point or in the client configuration.

Correct Answer: B

Section: (none)

Explanation

Explanation/Reference:

QUESTION 125

Which statement is correct about the current address translation configurations on the security appliance?

- A. Dynamic NAT is used to translate the 10.0.1.100 host on the inside interface to a global address of 192.168.1.1
- B. Port Address Translation(PAT) is used to translate any host on the inside interface to the 192.168.1.100 global address.
- C. Static NAT is used to translate the 172.16.1.2 host on the dmz1 interface to a global address of 192.168.1.102
- D. Dynamic NAT is used to translate any host on dmz1 and dmz2 interfaces to a mapped address from the address pool of 192.168.1.110 to 192.168.1.250

Correct Answer: C

Section: (none)

Explanation

Explanation/Reference:

QUESTION 126

VLAN Hopping is one of the primary VLAN based attacks used by hackers to infiltrate network security. VLAN hopping is used to attack a network by sending packets to a port which is generally not accessible. VLAN

hopping attacks are mainly conducted in the Dynamic Trunking Protocol and, in some cases; the attacks are targeted to the trunking encapsulation protocol (802.1 q or ISL). You worry about the switched infrastructure in an integrated network is vulnerable to VLAN hopping attacks. Which two configuration can be used to mitigate VLAN hopping? (Choose two.)

- A. switchporttrunk encapsulation
- B. switchport mode trunk
- C. switchport access vlan
- D. switchport mode access

Correct Answer: CD

Section: (none)

Explanation

Explanation/Reference:

QUESTION 127

CiscoWorks SNMS is a part of the CiscoWorks family of products for managing small to large networks. CiscoWorks SIMMS is a new Web-based network management solution for small to medium-sized businesses, with 40 or fewer Cisco internetworking devices such as switches, routers, hubs, and access servers. CiscoWorks SNMS can also monitor third-party IT assets such as servers, applications, services, and printers. A Public Switched Telephone Network (PSTN) trunk is typically the voice interconnect between any business and the outside world. Which network management tool is designed to allow businesses to manage up to 40 devices?

- A. CiscoWorks Unrestricted
- B. CiscoWorks WAN Management
- C. CiscoWorks LAN Management
- D. CiscoWorks SNMS

Correct Answer: D

Section: (none)

Explanation

Explanation/Reference:

QUESTION 128

Which statement is correct about the information in the Cisco Adaptive Security Device Manager General and License Information screen?

- A. The security appliance supports active/active failover only.
- B. The security appliance supports 3DES-AES only.
- C. The managed device is a Cisco ASA 5540 Security Appliance with VPN premium license enabled.
- D. The managed device is Cisco PIX515E Security Appliance.

Correct Answer: D

Section: (none)

Explanation

Explanation/Reference:

QUESTION 129

Which three are different types of STP inconsistencies in a Layer 2 network?(Choose three)

- A. MAC inconsistency
- B. Root inconsistency
- C. EtherChannel inconsistency
- D. type inconsistency

Correct Answer: BCD

Section: (none)

Explanation

Explanation/Reference:

QUESTION 130

According to the error log, VLAN 1 is where the BPDU was received, and VLAN 2 is where the BPDU originated. When inconsistency is detected, what happens?

- A. VLAN 1 is blocked, while VLAN 2 is forwarding
- B. VLAN1 is blocked, while VLAN 2 is listening
- C. Both VLANs are listening on the port from which this BPDU is send
- D. Both VLANs are blocked on the port from which this BPDU is received

Correct Answer: D

Section: (none)

Explanation

Explanation/Reference:

QUESTION 131

Which statement is true about a Cisco Aironet 350 Series wireless client when its green LED appears to be off and its amber LED is blinking?

- A. The client adapter is scanning for a network.
- B. The client adapter is in ad hoc mode.
- C. The client adapter is performing a self-test.
- D. The client adapter is in power-save mode.

Correct Answer: D

Section: (none)

Explanation

Explanation/Reference:

QUESTION 132

Which interface on the Cisco UC520 is assigned an IP address either statically or through DHCP?

- A. WAN interface
- B. LAN interface
- C. Switch port
- D. PSTN Interface

Correct Answer: A

Section: (none)

Explanation**Explanation/Reference:****QUESTION 133**

The Cisco SA 500 Series Security Appliances are built specifically for businesses with less than 100 employees. What are three important benefits of this device? (Choose three)

- A. business-grade firewall
- B. premium support viaSMARTnet
- C. site-to-site VPN for remote offices
- D. Cisco IOS software-based
- E. email security
- F. XML support

Correct Answer: ACE

Section: (none)

Explanation**Explanation/Reference:****QUESTION 134**

What does understanding the radiation patterns of different antennas types help you to determine when providing wireless coverage in an office building?

- A. the exact number of access points that are needed
- B. the type of antenna to cover a specific area
- C. the size of an area that will be covered
- D. the location of the access points

Correct Answer: C

Section: (none)

Explanation**Explanation/Reference:****QUESTION 135**

Which security audit mode allows you to make all recommended security-related configuration changes automatically?

- A. Security Audit wizard
- B. interface management
- C. One-step Lockdown
- D. Cisco Configuration Professional

Correct Answer: C

Section: (none)

Explanation**Explanation/Reference:**

QUESTION 136

What can be used to troubleshoot complex network and VPN connectivity issues?

- A. NAT
- B. CCP
- C. IPsec
- D. NAC

Correct Answer: B

Section: (none)

Explanation

Explanation/Reference:

QUESTION 137

A company needs to provide site-to-site VPN, remote access VPN, and firewall protection. Which device best supports all three functions?

- A. Cisco PIX
- B. Cisco ASA
- C. Cisco Concentrator
- D. Cisco Router and Security Device Manager

Correct Answer: B

Section: (none)

Explanation

Explanation/Reference:

QUESTION 138

A customer in Europe needs to establish an 11-Mbps wireless bridge link between two office buildings that are approximately 1.3 km apart. The wireless link will pass through a public park, which contains a lake that is surrounded by trees. You run the range calculation and determine that the Cisco Aironet 1300 Series Outdoor Access Point/Bridge should work. You install the link using 10.5-dB yagis with 75 feet of standard Cisco cabling and both radios set at 20 mW. The wireless bridges are not able to establish or maintain a link.

What is needed to successfully complete this link?

- A. An amplifier needs to be installed at one of the sites.
- B. The antenna must be raised high enough to clear the trees
- C. Lower loss cabling needs to be used to bring the EIRP into legal limits.
- D. Due to the trees, a 21-dBi dish needs to be used for its narrower beam width.

Correct Answer: B

Section: (none)

Explanation

Explanation/Reference:

QUESTION 139

Which interface on the Cisco UC520 is assigned an IP address either statically or through DHCP?

- A. WAN interface

- B. LAN interface
- C. Switch port
- D. PSTN Interface

Correct Answer: A

Section: (none)

Explanation

Explanation/Reference:



<http://www.gratisexam.com/>