

CV0-002.exam.60q

Number: CV0-002
Passing Score: 800
Time Limit: 120 min



<https://www.gratisexam.com/>

CV0-002

CompTIA Cloud+

<https://www.gratisexam.com/>

Exam A

QUESTION 1

A company purchased a SaaS CRM application. The signed SLA meets year-round performance requirements. Three months after deployment, customers start reporting a slow application response time. System availability, connectivity, and proper functionality still meet the SLA. Which of the following is MOST likely the reason for the poor response time?



<https://www.gratisexam.com/>

- A. Incorrect business requirements are invalidating the testing results.
- B. Bandwidth restrictions are causing poor performance.
- C. The application version is causing compatibility issues.
- D. Inadequate documentation is affecting the user interface.

Correct Answer: C

Section: (none)

Explanation

Explanation/Reference:

QUESTION 2

A cloud architect created a new delivery controller for a large VM farm to scale up according to organizational needs. The old and new delivery controllers now form a cluster. However, the new delivery controller returns an error when entering the license code. Which of the following is the MOST likely cause?

- A. A firewall is blocking the port on the license server.
- B. The existing license is for a lower version.
- C. The existing license is not supported for clusters.
- D. The existing license has expired.

Correct Answer: A

Section: (none)

Explanation

Explanation/Reference:

QUESTION 3

A multinational corporation needs to migrate servers, which are supporting a national defense project, to a new datacenter. The data in question is approximately 20GB in size. The engineer on the project is considering datacenters in several countries as possible destinations. All sites in consideration are on a high-speed MPLS network (10Gb+ connections). Which of the following environmental constraints is MOST likely to rule out a possible site as an option?

- A. Downtime impact
- B. Legal restrictions
- C. Peak time frames
- D. Bandwidth

Correct Answer: B

Section: (none)

Explanation

Explanation/Reference:

QUESTION 4

A cloud administrator is provisioning five VMs, each with a minimum of 8GB of RAM and a varying load throughout the day. The hypervisor has only 32GB of RAM. Which of the following features should the administrator use?

- A. Memory overcommitment
- B. Thin-provisioned model
- C. Process scheduling
- D. Hyperthreading

Correct Answer: C

Section: (none)

Explanation

Explanation/Reference:

QUESTION 5

A cloud engineer is using a hosted service for aggregating the logs for all the servers in a public cloud environment. Each server is configured via syslog to send its logs to a central location. A new version of the application was recently deployed, and the SaaS server now stops processing logs at noon each day. In reviewing the system logs, the engineer notices the size of the logs has increased by 50% each day. Which of the following is the MOST likely reason the logs are not being published after noon?

- A. The logging directory does not have sufficient storage space.
- B. The syslog service is not running on the servers.
- C. The data limit has been exceeded at the SaaS provider.
- D. There is a cloud service provider outage.

Correct Answer: A

Section: (none)

Explanation

Explanation/Reference:

QUESTION 6

A cloud administrator notices one of the servers is using the wrong set of NTP servers. The administrator needs to avoid the same issue in the future but needs to minimize administration resources. Which of the following tools should a cloud administrator deploy to meet this requirement?

- A. Patching tools
- B. Monitoring tools
- C. Configuration tools
- D. Deployment tools

Correct Answer: D

Section: (none)

Explanation

Explanation/Reference:

QUESTION 7

The legal department requires eDiscovery of hosted file shares. To set up access, which of the following is the BEST method to ensure the eDiscovery analyst only has the ability to search but not change configuration or settings?

- A. PKI
- B. SSO
- C. MFA
- D. RBAC

Correct Answer: D

Section: (none)

Explanation

Explanation/Reference:

QUESTION 8

When designing a new private cloud platform, a cloud engineer wants to make sure the new hypervisor can be configured as fast as possible by cloning the OS from the other hypervisor. The engineer does not want to use local drives for the hypervisors. Which of the following storage types would BEST suit the engineer's needs?

- A. CAS
- B. NAS
- C. DAS
- D. SAN

Correct Answer: D

Section: (none)

Explanation

Explanation/Reference:

QUESTION 9

A cloud engineer deployed an email server in a public cloud. Users can access the email server, but the emails they send cannot reach their destinations. Which of the following should the cloud engineer do FIRST?



<https://www.gratisexam.com/>

- A. Confirm the email server configuration and reinstall the email server software.
- B. Validate the security certificate for the email domain.
- C. Confirm email encryption service.
- D. Consult the cloud vendor's anti-spam policy.

Correct Answer: A

Section: (none)

Explanation

Explanation/Reference:

QUESTION 10

A cloud implementation engineer successfully created a new VM. However, the engineer notices the new VM is not accessible from another network. A ping test works from another VM on the same subnet. Which of the following is the MOST likely problem?

- A. Incorrect subnet
- B. Incorrect host IP address
- C. Incorrect VLAN
- D. Incorrect gateway

Correct Answer: A

Section: (none)

Explanation

Explanation/Reference:

QUESTION 11

A customer wants a cloud systems administrator to adjust the backup schedule after month-end to ensure the data can be restored as fast as possible while minimizing the time needed to perform the backup. Which of the following backup types should be scheduled?

- A. Synthetic full
- B. Incremental
- C. Differential
- D. Full

Correct Answer: A

Section: (none)

Explanation

Explanation/Reference:

QUESTION 12

A cloud administrator uses a script to automatically restart all the servers running in the public cloud provider environment, which hosts e-commerce applications. The administrator decides to implement the same script for a similar environment that hosts the finance applications. After verifying the script is deployed to the public cloud environment for finance, the administrator schedules a job to run at 9:00 a.m. After 9:00 a.m., the administrator receives a report from the e-commerce team that the application is experiencing outages. Which of the following should the administrator do to resolve the issue?

- A. Update the version of the CLI tool for the public cloud provider.
- B. Copy the script up to a bastion host in the environment and run it from there.
- C. Validate the access credentials for the cloud provider are correct.
- D. Debug the script and modify it to remove the flawed logic.

Correct Answer: C

Section: (none)

Explanation

Explanation/Reference:

QUESTION 13

A company wants to take advantage of cloud benefits while retaining control of and maintaining compliance with all its security policy obligations. Based on the non-functional requirements, which of the following should the company use?

- A. Hybrid cloud, as use is restricted to trusted customers
- B. IaaS, as the cloud provider has a minimal level of security responsibility
- C. PaaS, as the cloud customer has the most security responsibility
- D. SaaS, as the cloud provider has less security responsibility

Correct Answer: B

Section: (none)

Explanation

Explanation/Reference:

QUESTION 14

A cloud administrator has deployed a new all-flash storage array with deduplication and compression enabled, and moved some of the VMs into it. The goal was to achieve 4:1 storage efficiency while maintaining sub-millisecond latency. Which of the following results would BEST suit the requirements?

- A. Compression 1:1
Deduplication 4:1

- Overall savings 4:1
Average latency 1.0ms
- B. Compression 1.5:1
Deduplication 1.8:1
Overall savings 2.2:1
Average latency 600us
- C. Compression 1.3:1
Deduplication 3.1:1
Overall savings 4.3:1
Average latency 900us
- D. Compression 1.8:1
Deduplication 2.7:1
Overall savings 4.2:1
Average latency 1.2ms

Correct Answer: D

Section: (none)

Explanation

Explanation/Reference:

QUESTION 15

A newly established CSP allows for drive shipping to upload new data into the environment. Sensitive data on 40TB of storage needs to be transferred within one week. Which of the following is the MOST efficient and secure method for shipment of the data to the CSP with minimal downtime?

- A. Create a VPN between the sites and schedule data transfer during non-business hours.
- B. Copy the data to encrypted drives and use the CSP-certified shipping provider.
- C. Compress and SFTP the data to the CSP.
- D. Move the data to encrypted drives and use the CSP-certified shipping provider.

Correct Answer: D

Section: (none)

Explanation

Explanation/Reference:

QUESTION 16

A manufacturing company's current security policy mandates PII is not stored in the SaaS solution. Which of the following configuration controls should be used to

block sensitive information from being stored in the SaaS solution?

- A. Implement file-level encryption.
- B. Implement a network ACL.
- C. Implement an IPS.
- D. Implement content filtering.

Correct Answer: B

Section: (none)

Explanation

Explanation/Reference:

QUESTION 17

A new application with availability SLA requirements of 99.99% has been deployed in a cloud. For a test spanning a month, which of the following unavailability times would mean the test was successful? (Select TWO).

- A. 1 minute
- B. 4 minutes
- C. 10 minutes
- D. 30 minutes
- E. 60 minutes

Correct Answer: AB

Section: (none)

Explanation

Explanation/Reference:

QUESTION 18

A company's security policy requires full disk encryption on all clients with preboot enabled. The encryption server is hosted, and the requirement is to push an update to all endpoints. Which of the following is the BEST method to test and apply the update with minimal disruption to end users?

- A. Access the API of the encryption server, develop a custom script, and then update all endpoints.
- B. Access the web UI portal of the encryption server, apply the update to the test group, validate, and then update all endpoints.
- C. Add the update to the standard desktop configuration image, apply the update to a test VM, and then reimage clients.

D. Access the web UI of the encryption server and disable preboot, apply the update, test, and then deploy the update to all endpoints.

Correct Answer: B

Section: (none)

Explanation

Explanation/Reference:

QUESTION 19

A technician receives a report of system utilization:

	Current %	Past 30 days %	Past 60 days %	Past 90 days %
CPU	30	26	45	22
RAM	75	55	45	35
Disk	80	80	80	80
Bandwidth	70	75	80	85

Which of the following additional resources should the technician add FIRST given the trend data shown above?

- A. CPU
- B. Disk
- C. Bandwidth
- D. RAM

Correct Answer: B

Section: (none)

Explanation

Explanation/Reference:

QUESTION 20

A cloud administrator is provisioning several user accounts that have administrator rights to assets using JSON within an IaaS cloud platform. The administrator is required to configure "alternate" settings using the API. Given this scenario, which of the following elements would allow the administrator to meet these requirements in the JSON file?

- A. Statement
- B. Effect

- C. Resource
- D. Condition

Correct Answer: A

Section: (none)

Explanation

Explanation/Reference:

QUESTION 21

Before doing a change on a VM, a systems administrator wants to ensure there is an easy and fast way to rollback if needed. The change and testing should take approximately two hours. Which of the following is the EASIEST way to meet this requirement?

- A. Create a snapshot on the hypervisor.
- B. Make an on-demand, incremental backup to a VTL.
- C. Make an on-demand, full backup to a secondary location.
- D. Create a snapshot on a remote storage array.

Correct Answer: A

Section: (none)

Explanation

Explanation/Reference:

QUESTION 22

The CSA needs to install a patch on 58 virtual server instances during the Friday evening maintenance window. Which of the following is the MOST efficient way to get the patches installed?

- A. Use the patch management tool to automate and orchestrate the patch installation.
- B. Use a security vulnerability scanning tool to apply the patch automatically.
- C. Schedule the patch to install from a remote file server upon server reboot.
- D. Connect the server instances to the Internet to download the patch automatically.

Correct Answer: A

Section: (none)

Explanation

Explanation/Reference:

QUESTION 23

A recent advertisement campaign has increased traffic to an e-commerce application that is hosted within a public cloud environment. Customers are reporting that it takes too long to load their pages and submit orders. A cloud administrator looks at the metrics from the environment and sees high utilization of the CPU and memory resources. The cloud provider offers several preconfigured sizes for server template: x-small, small, medium, large, x-large, and 2x-large.

Server Name	Role	Server Template Size	Peak CPU Usage	Peak Memory Usage
Inxw001	web	medium	40%	45%
Inxpc002	application	2x-large	85%	90%
Inxpc003	application	x-large	95%	95%
Inxpc004	application	2x-large	85%	85%

Given an expected increase in workload, which of the following is the BEST solution to improve application performance?



<https://www.gratisexam.com/>

- A. Change the server template size for Inxpc003 to 2x-large.
- B. Provision additional Inxpc servers using the 2x-large template.
- C. Add memory to Inxpc002, Inxpc003, and Inxpc003.
- D. Change the role of Inxw001 from web to application.

Correct Answer: A

Section: (none)

Explanation

Explanation/Reference:

QUESTION 24

A company wants to leverage a SaaS provider for its back-office services, and security is paramount. Which of the following solutions should a cloud engineer deploy to BEST meet the security requirements?

- A. Firewall
- B. IPS/IDS
- C. Proxy gateway
- D. CASB

Correct Answer: D

Section: (none)

Explanation

Explanation/Reference:

QUESTION 25

A company upgraded a hosted vulnerability scanner to the latest version, and now tickets are not being created to assign critical vulnerabilities. After confirming the ticketing issue, all the scanning services are confirmed to be running on the VM. Which of the following is the MOST likely cause and best method to fix the issue?

- A. There was an IP change to the VM. Make changes to the server properties.
- B. The upgrade has a bug Reboot the server and attempt the upgrade again.
- C. The vulnerability scanner is on a different subnet. Open the ports, and it will reconnect.
- D. There is an application compatibility issue. Roll back to the previous working backup.

Correct Answer: D

Section: (none)

Explanation

Explanation/Reference:

QUESTION 26

A university is running a DNA decoding project that will take seven years if it runs on its current internal mainframe. The university negotiated a deal with a large cloud provider, which will donate its cloud resource to process the DNA decoding during the low peak time throughout the world. Which of the following is the MOST important resource the university should ask the cloud provider to donate?

- A. A large storage for the DNA decoding results
- B. A larger pipe to transfer the results
- C. A closer datacenter to the university
- D. Any available compute resource

Correct Answer: C

Section: (none)

Explanation

Explanation/Reference:

QUESTION 27

A storage administrator must choose the best replication methodology for storage.

- The datacenters are on opposite sides of the country.
- The RPO is 24 hours.
- Replication and customer access use the same connections.
- Replication should not impact customer access during the day.

Which of the following solutions would BEST meet these requirements?

- A. Asynchronous
- B. Regional
- C. Multiregional
- D. Synchronous

Correct Answer: A

Section: (none)

Explanation

Explanation/Reference:

QUESTION 28

The InfoSec team has directed compliance database activity monitoring without agents on a hosted database server in the public IaaS. Which of the following configurations is needed to ensure this requirement is achieved?

- A. Configure the agent configuration file to log to the syslog server.
- B. Configure sniffing mode on database traffic.
- C. Implement built-in database tracking functionality.
- D. Implement database encryption and secure copy to the NAS.

Correct Answer: B

Section: (none)

Explanation

Explanation/Reference:

QUESTION 29

Ann, a user, has tried to connect to a VM hosted in a private cloud using her directory services credentials. After three attempts, she realizes the keyboard was set to German instead of English, and she was typing "z" instead of "y". After fixing this issue, Ann is still unable to log in; however, other users can access the VM. Which of the following is the MOST likely cause?

- A. The default language on Ann's computer is German.
- B. The account was locked.
- C. Directory services are offline.
- D. There is an account mismatch.
- E. The account localization settings are incorrect.

Correct Answer: E

Section: (none)

Explanation

Explanation/Reference:

QUESTION 30

A cloud administrator is integrating account logins with Facebook, LinkedIn, and Twitter for marketing and to increase market presence using social media platforms. Given this scenario, which of the following components are needed to match these requirements? (Select TWO).

- A. SOAP
- B. SAML assertion
- C. Security token
- D. Identity provider
- E. Session state

Correct Answer: ABE

Section: (none)

Explanation

Explanation/Reference:

QUESTION 31

A company uses its own private cloud, which has few available resources. Mission-critical systems and other information systems are running on it. A new system will be deployed on the private cloud. The following tests are included in the test plan:

- Load test (2h)
- Backup/restore test (6h)
- Functional test (8h)
- Failover test (1h)

The work schedule of the existing system is shown below.

	System open	System close	Batch job
ERP (mission critical)	9:00	22:00	22:00-00:00
Groupware	24h active		no batch
Internal web	24h active		06:00-08:00
Official website	24h active		00:00-00:30

To minimize the effect to the existing system, which of the following schedules is MOST suitable for the load test?

- A. 02:00-04:00
- B. 09:00-12:00
- C. 18:00-20:00
- D. 22:00-00:00

Correct Answer: C

Section: (none)

Explanation

Explanation/Reference:

QUESTION 32

A cloud administrator is required to implement a solution to handle data-at-rest encryption requirements for a database. Which of the following would BEST satisfy the requirements?

- A. Install an SSL certificate and only allow secure connections to the server.
- B. Enable two-factor authentication on connections to the database server and log activities.
- C. Activate memory encryption on the virtual server and store the certificates remotely.
- D. Create a virtual encrypted disk, add it to the virtual server, and have the database write to it.

Correct Answer: A

Section: (none)

Explanation

Explanation/Reference:

QUESTION 33

A cloud administrator is tasked with ensuring redundancy and high availability of an IaaS cloud platform environment. The administrator is given the following requirements:

- Two web servers must share the same configurations and service client connections evenly.
- Two database servers must share data and configurations, with only one being used at a time.

Given the above, which of the following should the administrator propose to BEST meet these requirements? (Select TWO).

- A. The web server should be configured with a round-robin DNS with a CNAME record.
- B. The web server should be configured with a load balancer with a virtual IP address.
- C. The database server should be configured as an active-active cluster.
- D. The database server should be configured as an active-passive cluster.
- E. The availability aspect of the request does not currently exist in the IaaS cloud platform.
- F. The redundancy aspect of the request does not currently exist in the IaaS cloud platform.

Correct Answer: AD

Section: (none)

Explanation

Explanation/Reference:

QUESTION 34

A cloud administrator has finished building a virtual server template in a public cloud environment. The administrator is now cloning six servers from that template. Each server is configured with one private IP address and one public IP address. After starting the server instances, the cloud administrator notices that two of the servers do not have a public IP address. Which of the following is the MOST likely cause?

- A. The maximum number of public IP addresses has already been reached.
- B. The two servers are not attached to the correct public subnet.
- C. There is no Internet gateway configured in the cloud environment.

D. The two servers do not have enough virtual network adapters attached.

Correct Answer: D

Section: (none)

Explanation

Explanation/Reference:

QUESTION 35

A public cloud provider recently updated one of its services to provide a new type of application load balancer. The cloud administrator is tasked with building out a proof-of-concept using this new service type. The administrator sets out to update the scripts and notices the cloud provider does not list the load balancer as an available option type for deploying this service. Which of the following is the MOST likely reason?

- A. The administrator can deploy the new load balancer via the cloud provider's web console.
- B. The administrator needs to update the version of the CLI tool.
- C. The administrator needs to write a new script function to call this service.
- D. The administrator is not using the correct cloud provider account.

Correct Answer: B

Section: (none)

Explanation

Explanation/Reference:

QUESTION 36

A cloud service provider wants to offer hardened virtual server images for provisioning purposes. This will enable users to use only the operating system services that are allowed by the provider. Which of the following tasks are MOST appropriate for the hardening process? (Select TWO).

- A. Disable automatic updates.
- B. Disable the command prompt.
- C. Disable unneeded ports and services.
- D. Disable the local administrator account.
- E. Disable the remote desktop connection.
- F. Disable complex passwords.

Correct Answer: AC

Section: (none)

Explanation

Explanation/Reference:

QUESTION 37

In an IaaS environment, the security team issues a new signature file to prevent specific malware threats from infiltrating the company network. Which of the following describes where the security team should deploy the updated signatures?

- A. IDS
- B. Spam filter
- C. WAF
- D. NIPS
- E. HIPS

Correct Answer: C

Section: (none)

Explanation

Explanation/Reference:

QUESTION 38

A small clinic is moving its health and accounting systems to a SaaS solution. The clinic holds patient- and business-sensitive information. Which of the following is the company expected to do to protect its data?

- A. Document, configure, and enforce strong account management policies.
- B. Disable and document unneeded ports and protocols on the SaaS servers.
- C. Install antivirus and disable unneeded services on all SaaS servers.
- D. Harden the underlying infrastructure: servers, firewalls, and load balancers.

Correct Answer: B

Section: (none)

Explanation

Explanation/Reference:

QUESTION 39

A consultant is helping a large company migrate its development environment to a public cloud provider. The developers are working on a VDI solution. The development tools that employees utilize require greater control of the OS environment. Which of the following cloud types should the consultant implement?

- A. SaaS
- B. PaaS
- C. Bare metal service
- D. IaaS

Correct Answer: D

Section: (none)

Explanation

Explanation/Reference:

QUESTION 40

A company changed its policy to have seven-year data retention in the public cloud. Which of the following would be the MOST cost-effective way to meet retention requirements?

- A. Site mirroring
- B. Automated archiving
- C. Replication
- D. Third-party sites

Correct Answer: B

Section: (none)

Explanation

Explanation/Reference:

QUESTION 41

A business is planning to migrate from a private cloud to a public cloud. To document business continuity, which of the following should be done FIRST?

- A. Develop a disaster recovery plan with partners/third parties.
- B. Define the set of application-based SLAs.
- C. Identify HA technology to provide failover.
- D. Define the scope of requirements.

Correct Answer: B

Section: (none)

Explanation

Explanation/Reference:

QUESTION 42

A large finance firm processes three times as many transactions in December of each year. The transactions are processed in a private cloud. Management wants to avoid adding permanent resources to accommodate the single month increase. Which of the following is the BEST way to meet the need?

- A. Migrate all transaction processing to a public cloud and size capacity for the largest seasonal needs.
- B. Keep current capacity for processing, but implement cloud bursting to auto scale the resources without having to invest in infrastructure.
- C. Determine usage patterns over time and virtualize the processing traffic to give room for seasonal changes in resource demand.
- D. Determine usage patterns for the seasonal capacity needs and add physical resources to allow additional processing.

Correct Answer: B

Section: (none)

Explanation

Explanation/Reference:

QUESTION 43

A company has decided to scale its e-commerce application from its corporate datacenter to a commercial cloud provider to meet an anticipated increase in demand during an upcoming holiday. The majority of the application load takes place on the application server under normal conditions. For this reason, the company decides to deploy additional application servers into a commercial cloud provider using the on-premises orchestration engine that installs and configures common software and network configurations. The remote computing environment is connected to the on-premises datacenter via a site-to-site IPSec tunnel. The external DNS provider has been configured to use weighted round-robin routing to load balance connections from the Internet.

During testing, the company discovers that only 20% of connections completed successfully.

Review the network architecture and supporting documents and fulfill these requirements:
Identify the correct options to provide adequate configuration for hybrid cloud architecture.

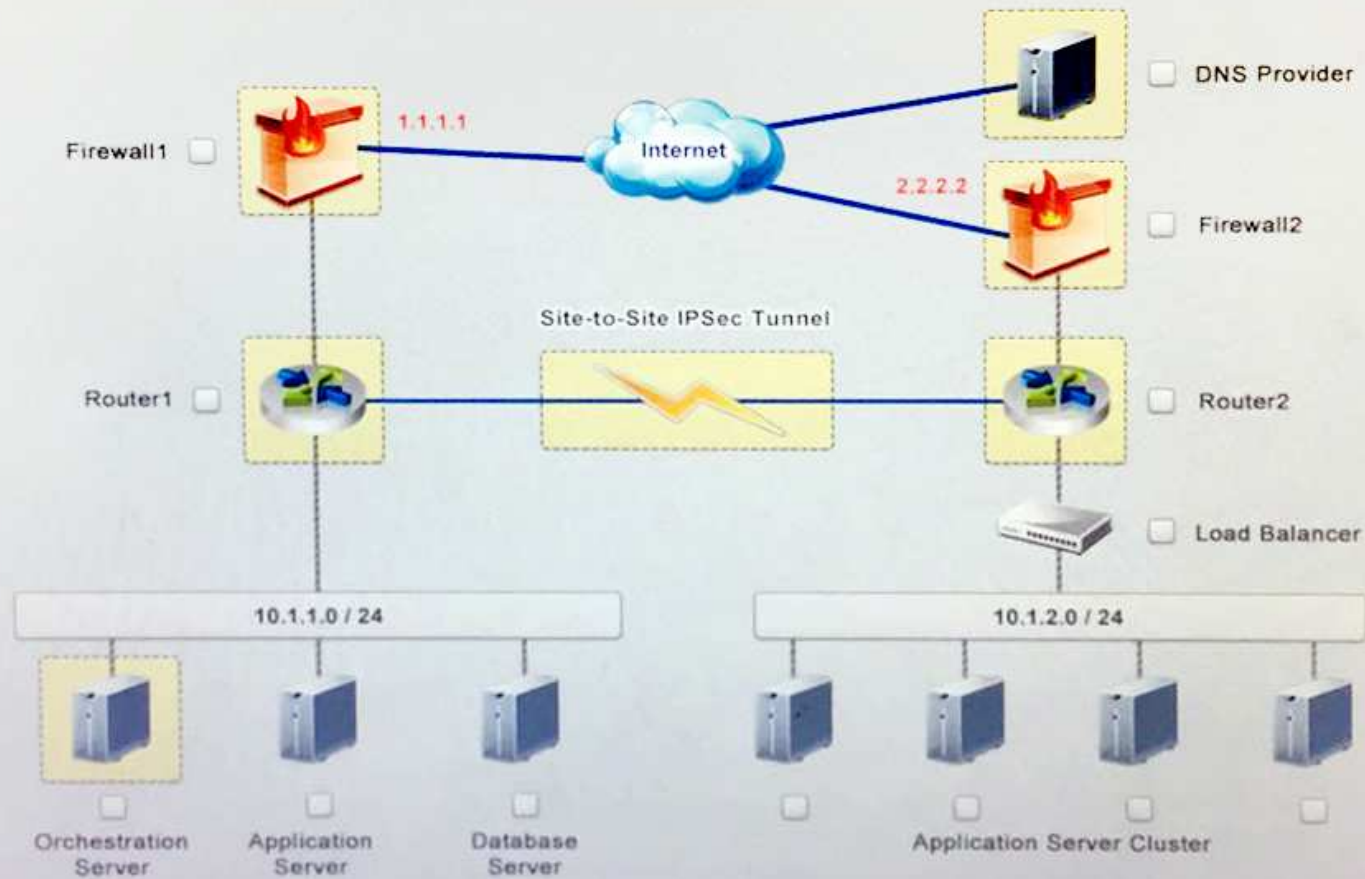
Instructions:

If at any time you would like to bring back the initial state of the simulation, please select the Reset button. When you have completed the simulation, please select the Done button to submit. Once the simulation is submitted, please select the Next button to continue.

Simulation

PART 1

Instruction: Click on each device to review more information of DNS, Firewall1, Firewall2, Router1, Router2, VPN and Orchestration Server.



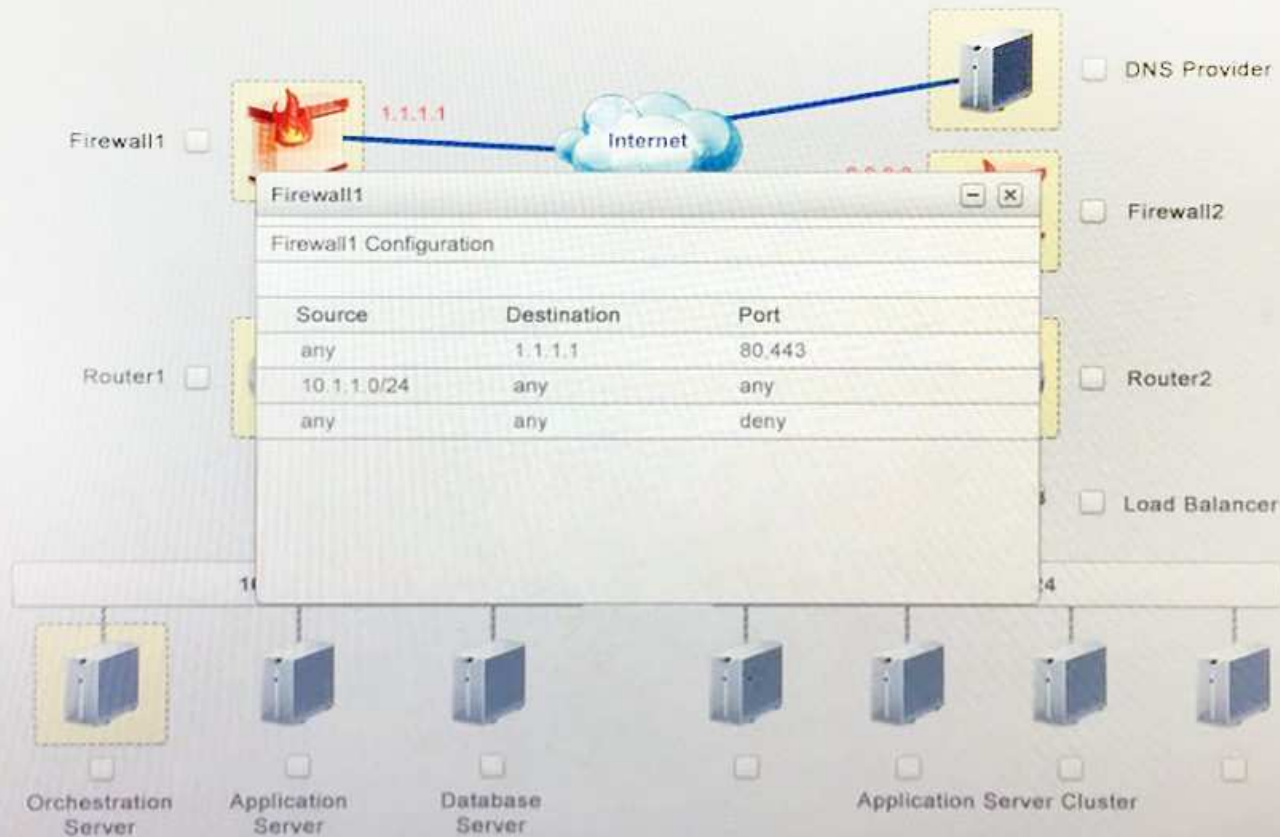
PART 1

PART 2

Clickable items

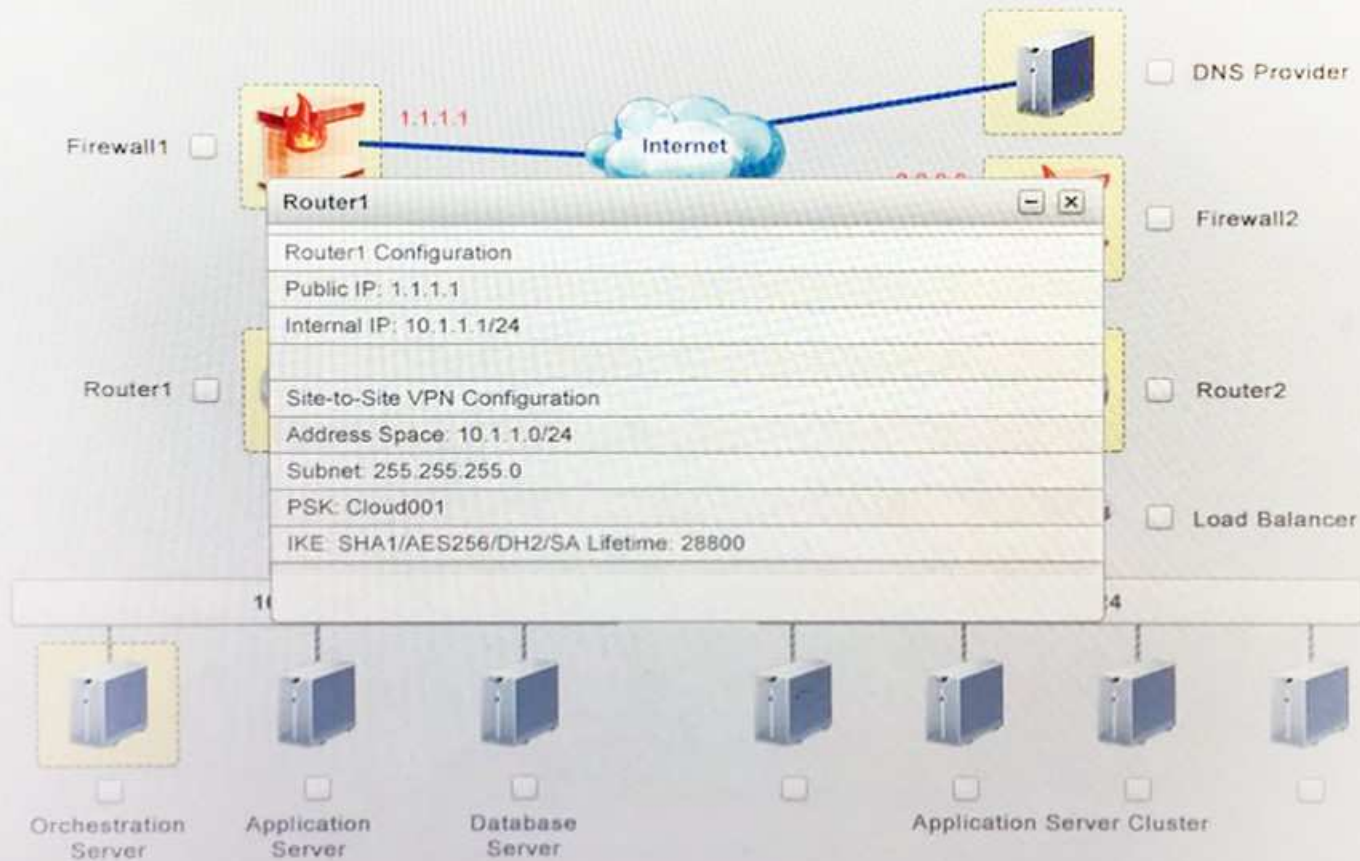
PART 1

Instruction: Click on each device to review more information of DNS, Firewall1, Firewall2, Router1, Router2, VPN and Orchestration Server.



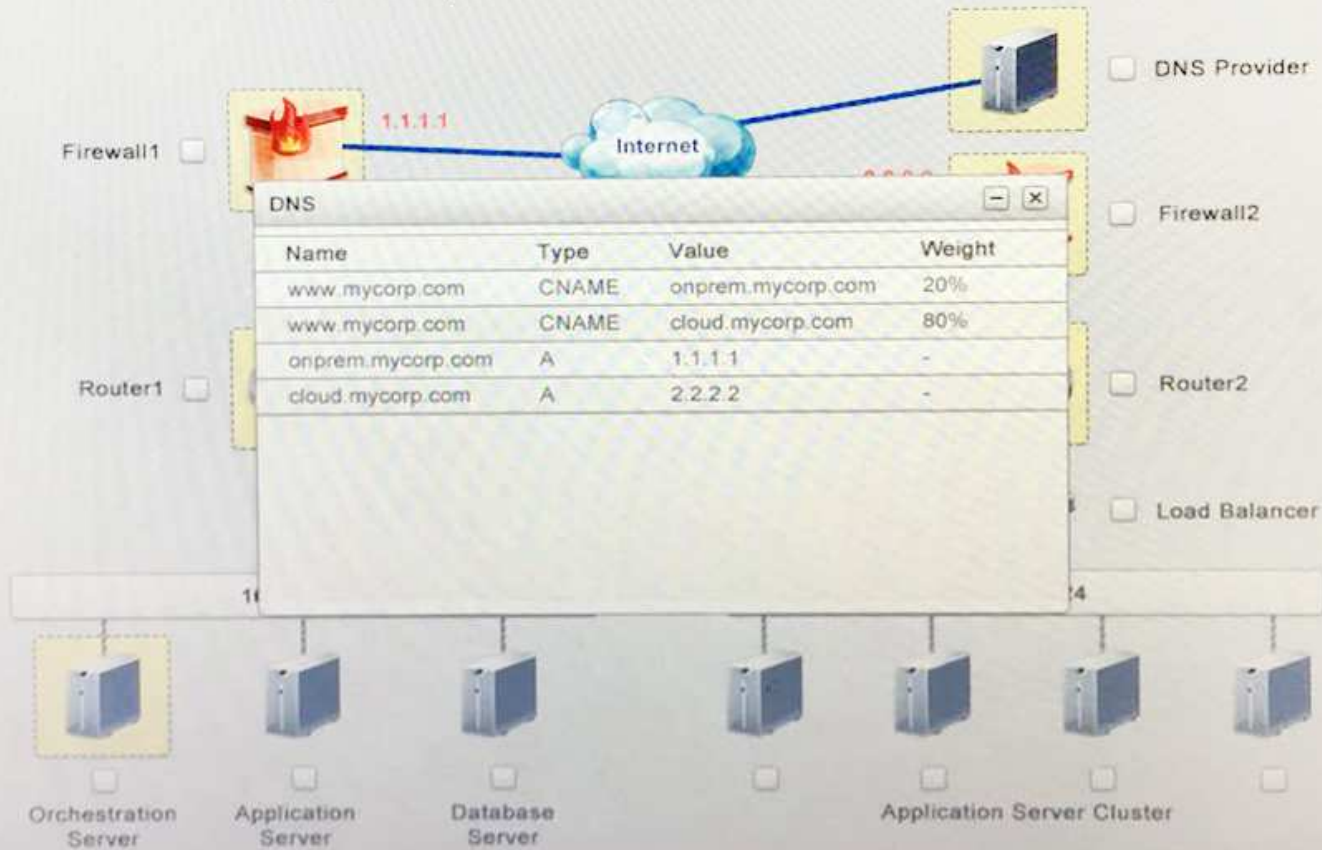
PART 1

Instruction: Click on each device to review more information of DNS, Firewall1, Firewall2, Router1, Router2, VPN and Orchestration Server.



PART 1

Instruction: Click on each device to review more information of DNS, Firewall1, Firewall2, Router1, Router2, VPN and Orchestration Server.



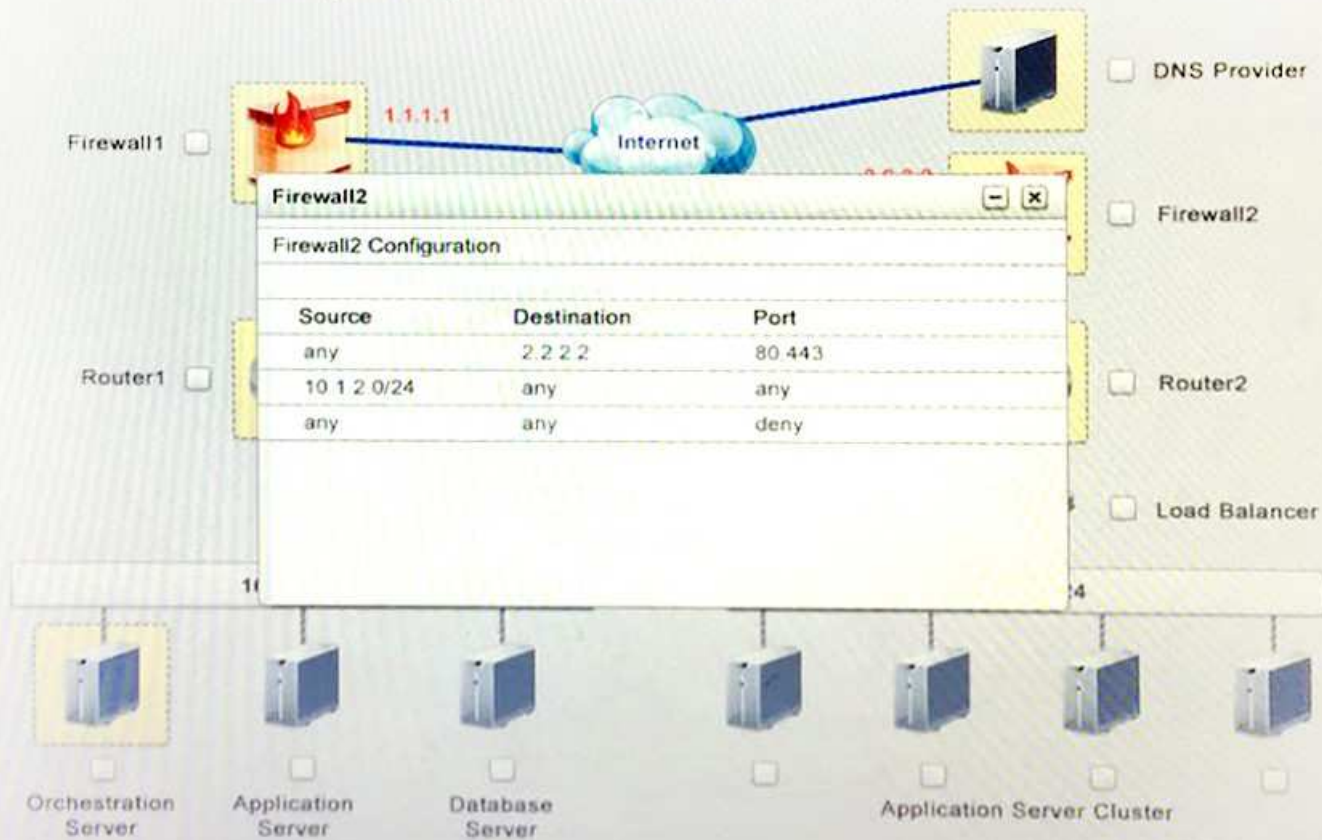
PART 1

PART 2

Clickable items

PART 1

Instruction: Click on each device to review more information of DNS, Firewall1, Firewall2, Router1, Router2, VPN and Orchestration Server.



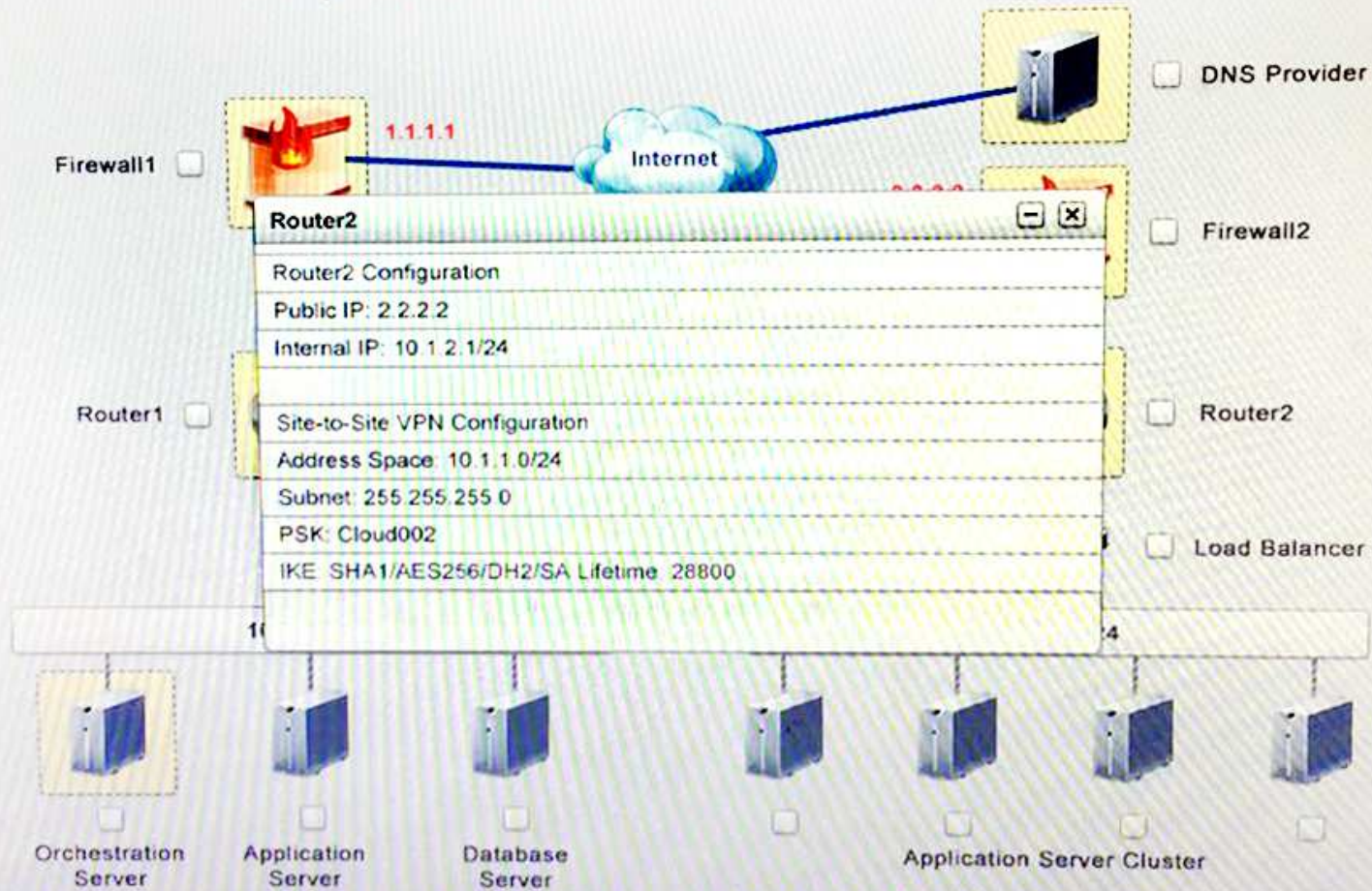
PART 1

PART 2

Clickable items

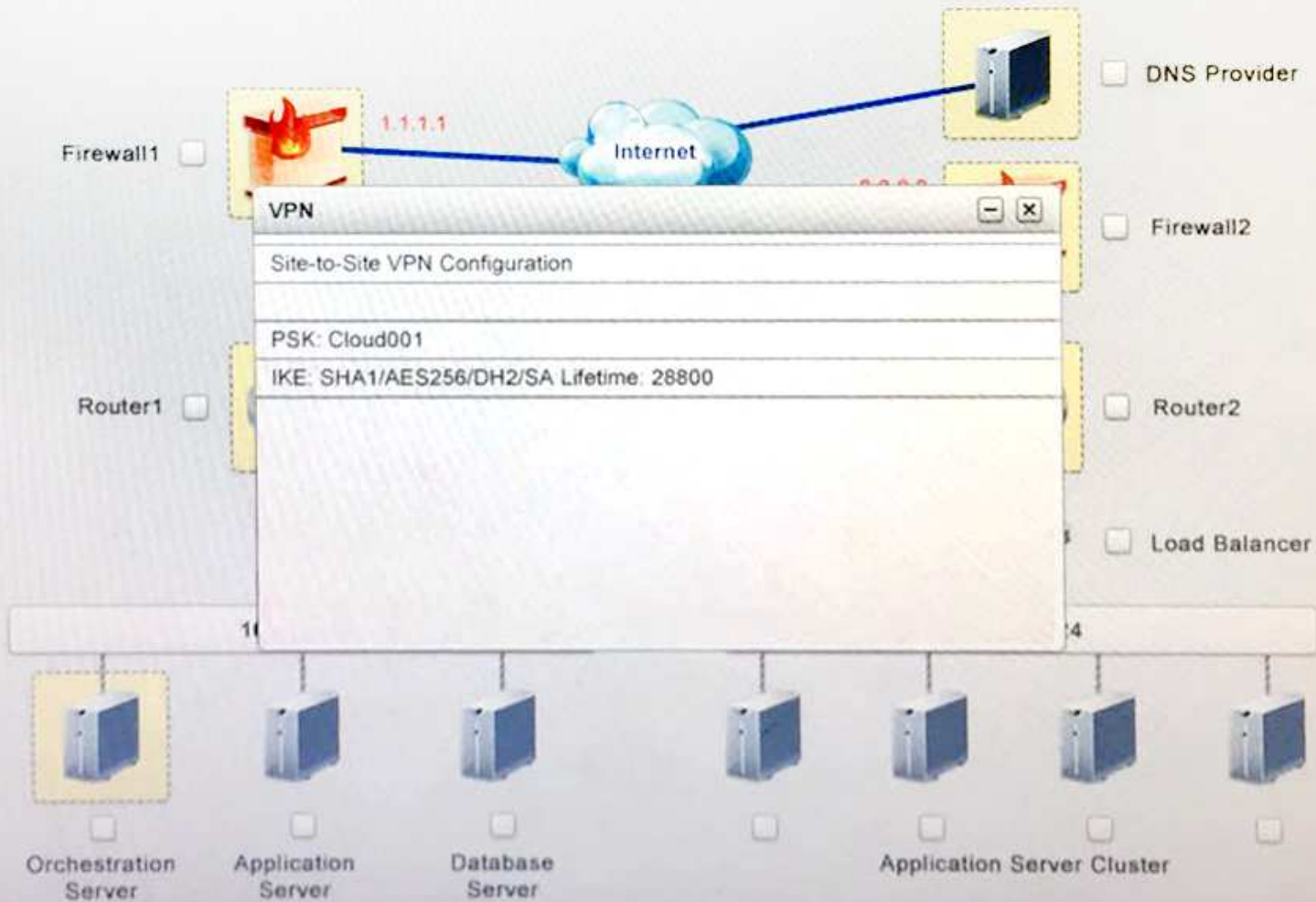
PART 1

Instruction: Click on each device to review more information of DNS, Firewall1, Firewall2, Router1, Router2, VPN and Orchestration Server.



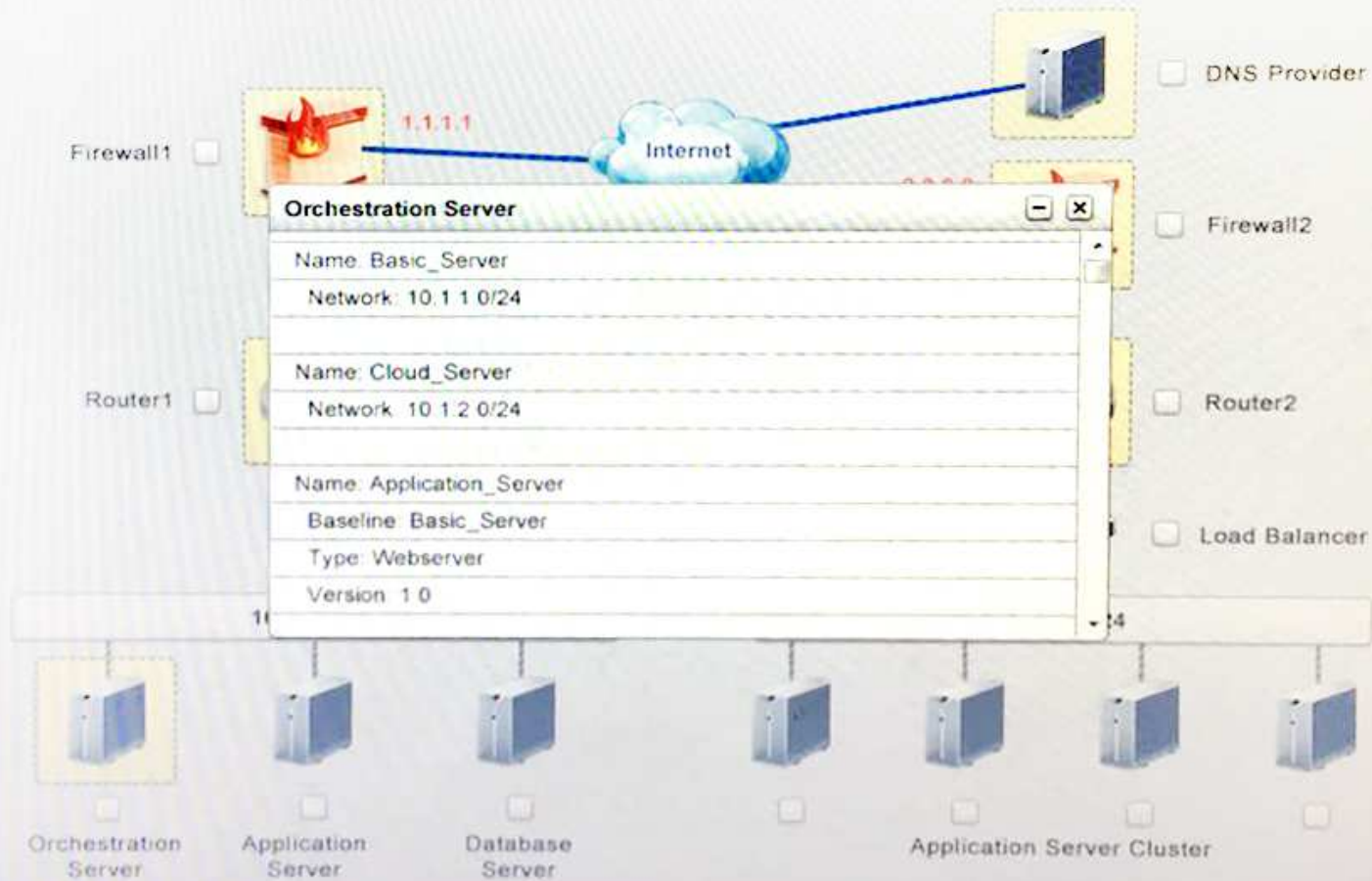
PART 1

Instruction: Click on each device to review more information of DNS, Firewall1, Firewall2, Router1, Router2, VPN and Orchestration Server.



PART 1

Instruction: Click on each device to review more information of DNS, Firewall1, Firewall2, Router1, Router2, VPN and Orchestration Server.

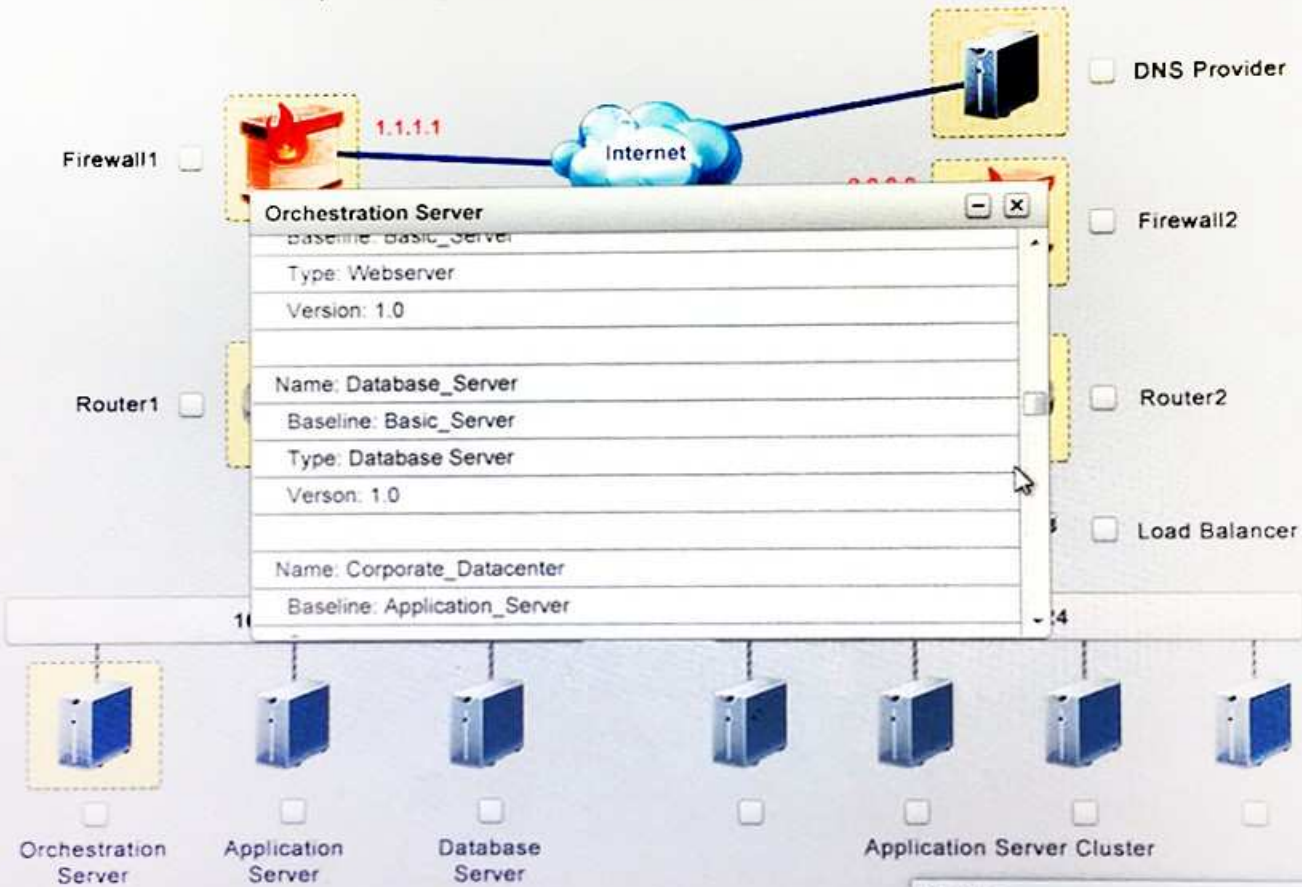


PART 1

PART 2

Clickable items

Router1, Router2, VPN and Orchestration Server.



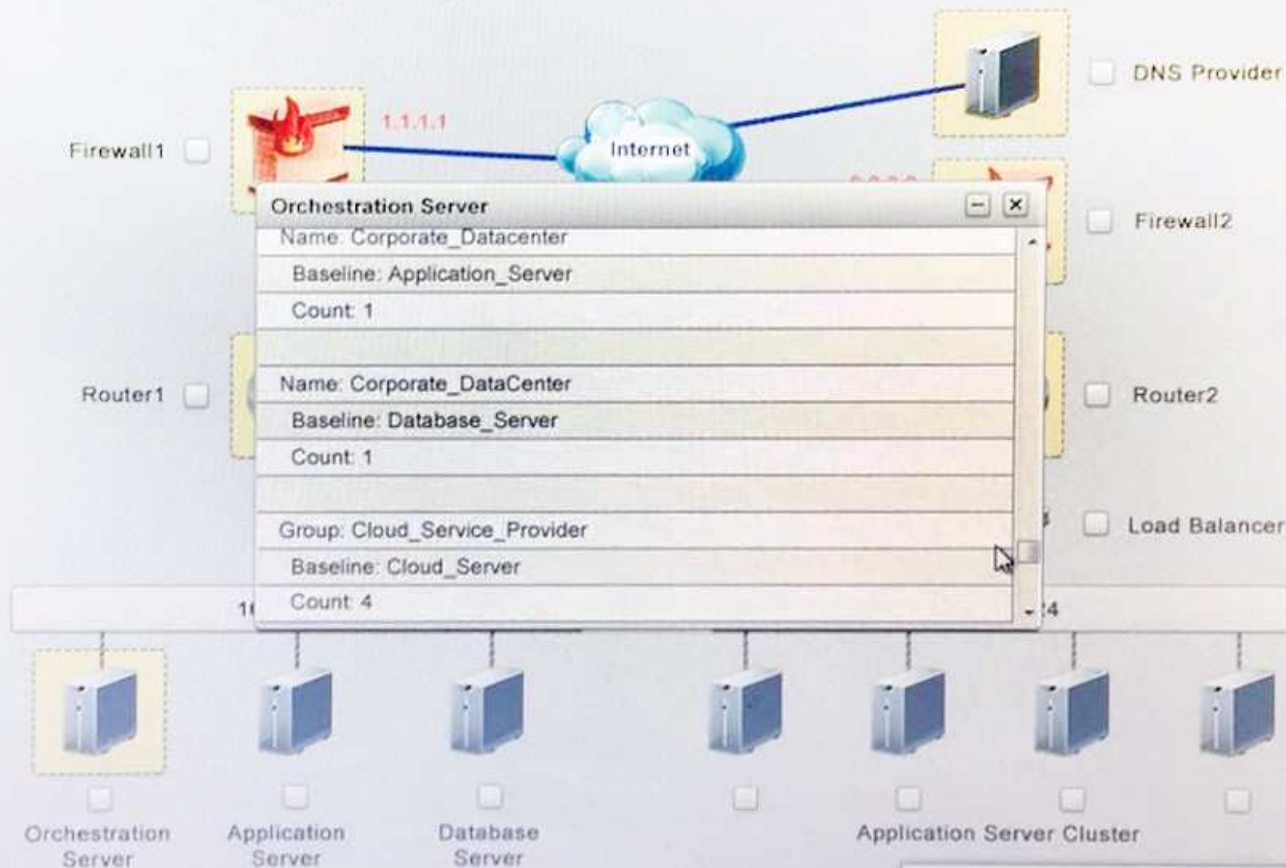
PART 1

PART 2

Question

A company has decided to scale its e-commerce application from its corporate datacenter to a commercial

Instruction: Click on each device to review more information of DNS, Firewall1, Firewall2, Router1, Router2, VPN and Orchestration Server.



Instruction: Only select a maximum of TWO options from the multiple choice question.

- A. Deploy a Replica of the Database Server in the Cloud Provider
- B. Update the PSK (Pre-shared key in Router2)

- C. Update the A record on the DNS from 2.2.2.2 to 1.1.1.1
- D. Promote deny All to allow All in Firewall1 and Firewall2
- E. Change the Address Space on Router2
- F. Change internal IP Address of Router1
- G. Reverse the Weight property in the two CNAME records on the DNS
- H. Add the Application Server at on-premises to the Load Balancer

Correct Answer: AH

Section: (none)

Explanation

Explanation/Reference:

QUESTION 44

Email users report that it takes more than one minute to open emails, including those without attachments. There are three email instances in three different regions hosted by the same CSP. Other applications hosted by the same CSP have no reported issues. Which of the following solutions BEST resolves the issue?



<https://www.gratisexam.com/>

- A. Confirm that the email instances have sufficient bandwidth.
- B. Install monitoring software on the email instances.
- C. Check the antivirus software settings and disable real-time message scanning.
- D. Ensure the requested IOPS are being provided to the email instances.

Correct Answer: C

Section: (none)

Explanation

Explanation/Reference:

QUESTION 45

A hospital is deploying a web-based application in its private cloud to service multiple facilities in a region. This application is used by employees of the hospital, as

well as the patients and their families. Which of the following security configurations is MOST likely to be deployed to secure the information from the application?

- A. IPSec
- B. PPTP
- C. L2TP
- D. SSL/TLS

Correct Answer: D

Section: (none)

Explanation

Explanation/Reference:

QUESTION 46

A technician is configuring a new web application to be highly available. The technician has configured multiple web servers in different availability zones at a public cloud provider. The application requires users to be directed to the same server each time they visit. Which of the following network components is MOST likely to accomplish this?

- A. Network firewall
- B. Intrusion prevention system
- C. Global load balancer
- D. Virtual private network

Correct Answer: D

Section: (none)

Explanation

Explanation/Reference:

QUESTION 47

Which of the following would be appropriate when considering inbound access security for a web-based SaaS solution?

- A. Antivirus/anti-malware
- B. IPSec
- C. Firewall
- D. Obfuscation

Correct Answer: B

Section: (none)

Explanation

Explanation/Reference:

QUESTION 48

A VM was deleted by mistake today at 11:05 a.m. Below are the backups currently available for the VM:

Backup Type	Date Time
Incremental	Today 00:00
Incremental	Yesterday 00:00
Synthetic-full	Yesterday 12:00
Full	Three days ago 00:00
Snapshot	Today 11:00
Snapshot	Today 07:00
Snapshot	Today 03:00

Crash-consistent restore is acceptable. Which of the following backups should be chosen?

- A. Snapshot from today at 11:00
- B. Full from three days ago at 00:00
- C. Incremental from today at 00:00
- D. Synthetic-full from yesterday at 12:00

Correct Answer: A

Section: (none)

Explanation

Explanation/Reference:

QUESTION 49

A cloud administrator is configuring a bastion host. The bastion host will be used to administer systems in the cloud remotely from the administrator's on-premises desktop. The administrator is given the following requirements:

- Ensure port 22 is open on the host and only allow the public IP of the on-premises router/firewall.
- Ensure port 3389 is open on the host and only allow the public IP of the on-premises router/firewall.
- Harden these services with PKI (where applicable).

Given this scenario, which of the following should the administrator utilize to BEST address these requirements? (Select THREE).

- A. RDP protocol from the desktop to the bastion host
- B. Telnet protocol from the desktop to the bastion host
- C. SSH protocol from the desktop to the bastion host
- D. MD5 and RC4 with a signed certificate
- E. RSA and AES with a signed certificate
- F. Blowfish and SHA-1 with a signed certificate
- G. VNC protocol from the desktop to the bastion host

Correct Answer: ACD

Section: (none)

Explanation

Explanation/Reference:

QUESTION 50

A cloud administrator is analyzing usage trends for a website housed within an IaaS cloud platform. The administrator notices that traffic and visitors to the site quadrupled from the normal baseline during the holiday season. The environment has a load balancer that uses standardized VMs to host the applications. Given this scenario, which of the following would be the MOST efficient, provide no downtime, and address the temporary spike in traffic?

- A. Implement an upward vertical scaling solution.
- B. Implement a downward vertical scaling solution.
- C. Implement an inward horizontal scaling solution.
- D. Implement an outward horizontal scaling solution.

Correct Answer: A

Section: (none)

Explanation

Explanation/Reference:

QUESTION 51

A cloud administrator configures a new web server for the site <https://companyname.com>. The administrator installs a wildcard SSL certificate for *.companyname.com. When users attempt to access the site, a certificate error is received. Which of the following is the MOST likely cause of the error?

- A. Certificate misconfigured
- B. Certificate expired
- C. Certificate revoked
- D. Certificate not signed

Correct Answer: A

Section: (none)

Explanation

Explanation/Reference:

QUESTION 52

An organization is replacing its internal human resources system with a SaaS-based application. The solution is multi-tenant, and the organization wants to ensure ubiquitous access while preventing password replay attacks. Which of the following would BEST help to mitigate the risk?

- A. Implement destination resources authentication.
- B. Require and implement two-factor authentication.
- C. Remove administrator privileges from users' laptops.
- D. Combine network authentication and physical security in one card/token.

Correct Answer: B

Section: (none)

Explanation

Explanation/Reference:

QUESTION 53

The following three hosts are being put into a virtualization cluster for a new project initiative:

	CPU Cores	CPU Clock Speed	Memory
Host 1	24	2GHz	256GB
Host 2	12	2GHz	256GB
Host 3	12	2GHz	256GB

As more VMs are deployed to the cluster, which of the following virtualization technologies is MOST likely to report an error with this configuration?

- A. High availability
- B. Ballooning
- C. Memory overcommitment
- D. Hyperthreading

Correct Answer: B

Section: (none)

Explanation

Explanation/Reference:

QUESTION 54

A cloud administrator is securing access to a VM using an IaaS cloud platform. The administrator must perform this task using an automated method, allow administrators to perform any method and expose any property of the VM, deny access for everyone else, and allow only read-only access to everyone else. Given this scenario, which of the following should the administrator use to BEST meet these requirements?

- A. jQuery
- B. JavaScript
- C. Java
- D. JSON

Correct Answer: C

Section: (none)

Explanation

Explanation/Reference:

QUESTION 55

A cloud administrator wants to apply patches in an isolated copy of the production virtual server to assess the impact. Which of the following activities would BEST achieve this objective?

- A. Clustering
- B. Snapshot
- C. Image backup

D. Cloning

Correct Answer: B

Section: (none)

Explanation

Explanation/Reference:

QUESTION 56

A security and risk team requires a weekly report to detect VM file system changes and validate the integrity of the OS. Which of the following is the BEST solution for this requirement?

- A. Configure a FIM agent on the VM and forward syslogs to a central location.
- B. Configure debugging on the VM and forward syslogs to a central location.
- C. Configure an antivirus agent on the VM and create the report through the web GUI.
- D. Configure a FIM agent on the VM and create the report through the web GUI.

Correct Answer: B

Section: (none)

Explanation

Explanation/Reference:

QUESTION 57

A software company recently moved all of its development testing to a public cloud environment. The company primarily uses IaaS to deploy and test its code. The company needs the software developers to be more agile and efficient when testing application code. Which of the following backup types should the developers use to BEST ensure the speedy recovery of a system if it is damaged?

- A. Snapshots
- B. Full
- C. Incremental
- D. Differential

Correct Answer: C

Section: (none)

Explanation

Explanation/Reference:

QUESTION 58

A company is looking for a hardware feature with the least amount of downtime in terms of firmware upgrades. Which of the following features BEST meet this requirement?

- A. In-service upgrades
- B. Rolling upgrades
- C. Failover upgrades
- D. User-mode upgrades

Correct Answer: B

Section: (none)

Explanation

Explanation/Reference:

QUESTION 59

A CSA needs to bring a client's public cloud site online at another location in the same region after a disaster. The RPO is eight hours, and the RTO is four hours. Which of the following is the BEST way to accomplish this goal?

- A. Restore the site at the new location within six hours by using backups from the failed public cloud site from eight hours earlier. Switch users from the failed site to the online regional public cloud site.
- B. Restore the site at the new location within two hours by using backups from the failed public cloud site from two hours earlier. Switch users from the failed site to the online regional public cloud site.
- C. Restore the site at the new location within eight hours by using backups from the failed public cloud site from six hours earlier. Switch users from the failed site to the online regional public cloud site.
- D. Restore the site at the new location within four and half hours by using backups from the failed public cloud site from a half hour earlier. Switch users from the failed site to the online regional public cloud site.

Correct Answer: C

Section: (none)

Explanation

Explanation/Reference:

QUESTION 60

Company A just acquired Company B and needs to migrate critical applications to Company A's private cloud infrastructure. Company B's applications are running on legacy servers and cannot be removed from the current datacenter where they reside. Which of the following migration strategies should the cloud administrator use?

- A. V2V
- B. P2V
- C. V2P
- D. P2P

Correct Answer: C

Section: (none)

Explanation

Explanation/Reference:



<https://www.gratisexam.com/>