

CV0-002.exam.68q

Number: CV0-002  
Passing Score: 800  
Time Limit: 120 min



<https://www.gratisexam.com/>

CV0-002

CompTIA Cloud+

<https://www.gratisexam.com/>

## Exam A

### QUESTION 1

Due to a competitor's unlimited data plan, a service provider is struggling and wants to transform its business services to be more hosting oriented. A cloud architect is tasked to review current cloud resource capacity and provide recommendations and a plan for better resource utilization. Given the following report:

Name	Type	Utilization
Server1	Media	25%
Server2	Media	15%
Server3	Media	12%
Server4	Host	72%

Which of the following is the BEST option for the architect to suggest?

- A. Downsize by migrating all media services to one server and decommission two servers.
- B. Downsize by decommissioning servers 2 and 3 and reallocate media servers to hosts.
- C. Downsize by migrating all media services to one server, add one host server, and decommission one server.
- D. Upsize the hosting services by turning server 1 into a host server.

**Correct Answer:** A

**Section:** (none)

**Explanation**

**Explanation/Reference:**

### QUESTION 2

A cloud administrator is receiving alerts that the disk on several systems is 90% full. Upon reviewing the systems, the administrator determines that the log directory is using 50% of the disk. The company has a 14-day retention policy for all logs. Which of the following is the BEST solution to implement to minimize future alerts?



<https://www.gratisexam.com/>

- A. Orchestrate a job to rotate the logs and upload to external storage.

<https://www.gratisexam.com/>

- B. Delete any log files in the directory that are larger than 20MB.
- C. Archive the existing logs in the directory and upload to external storage.
- D. Add additional storage space to the log directory for the servers.

**Correct Answer:** A

**Section:** (none)

**Explanation**

**Explanation/Reference:**

### QUESTION 3

A company purchased a SaaS CRM application. The signed SLA meets year-round performance requirements. Three months after deployment, customers start reporting a slow application response time. System availability, connectivity, and proper functionality still meet the SLA. Which of the following is MOST likely the reason for the poor response time?

- A. Incorrect business requirements are invalidating the testing results.
- B. Bandwidth restrictions are causing poor performance.
- C. The application version is causing compatibility issues.
- D. Inadequate documentation is affecting the user interface.

**Correct Answer:** C

**Section:** (none)

**Explanation**

**Explanation/Reference:**

### QUESTION 4

A cloud architect created a new delivery controller for a large VM farm to scale up according to organizational needs. The old and new delivery controllers now form a cluster. However, the new delivery controller returns an error when entering the license code. Which of the following is the MOST likely cause?

- A. A firewall is blocking the port on the license server.
- B. The existing license is for a lower version.
- C. The existing license is not supported for clusters.
- D. The existing license has expired.

**Correct Answer:** A

**Section:** (none)

### **Explanation**

### **Explanation/Reference:**

#### **QUESTION 5**

A cloud administrator is provisioning five VMs, each with a minimum of 8GB of RAM and a varying load throughout the day. The hypervisor has only 32GB of RAM. Which of the following features should the administrator use?

- A. Memory overcommitment
- B. Thin-provisioned model
- C. Process scheduling
- D. Hyperthreading

**Correct Answer: C**

**Section: (none)**

### **Explanation**

### **Explanation/Reference:**

#### **QUESTION 6**

Several SaaS providers support identity federation for authentication. Which of the following would BEST assist in enabling federation?

- A. SAML
- B. NTLM
- C. MFA
- D. PKI

**Correct Answer: A**

**Section: (none)**

### **Explanation**

### **Explanation/Reference:**

Reference: <https://aws.amazon.com/blogs/apn/identity-federation-and-sso-for-saas-on-aws/>

#### **QUESTION 7**

A cloud administrator notices one of the servers is using the wrong set of NTP servers. The administrator needs to avoid the same issue in the future but needs to minimize administration resources. Which of the following tools should a cloud administrator deploy to meet this requirement?

- A. Patching tools
- B. Monitoring tools
- C. Configuration tools
- D. Deployment tools

**Correct Answer:** D

**Section:** (none)

**Explanation**

**Explanation/Reference:**

#### **QUESTION 8**

When designing a new private cloud platform, a cloud engineer wants to make sure the new hypervisor can be configured as fast as possible by cloning the OS from the other hypervisor. The engineer does not want to use local drives for the hypervisors. Which of the following storage types would BEST suit the engineer's needs?

- A. CAS
- B. NAS
- C. DAS
- D. SAN

**Correct Answer:** D

**Section:** (none)

**Explanation**

**Explanation/Reference:**

#### **QUESTION 9**

A file server is being migrated from physical hardware into a private cloud. Baselineing of the server shows the disks average 90% full at all times. The contents of the file server consist mostly of compressed audio files. Multiple copies of the same files are often saved in different locations on the same disk. Which of the following storage technologies is MOST likely to help minimize storage utilization when moving this server to the private cloud?

- A. Compression
- B. Thin provisioning
- C. Deduplication
- D. Tokenization

**Correct Answer:** C

**Section:** (none)

**Explanation**

**Explanation/Reference:**

**QUESTION 10**

A cloud administrator is looking at business requirements that specify the data available at the disaster recovery site must not be more than 24 hours old. Which of the following metrics correctly relates to these requirements?



- A. RTO
- B. MTBF
- C. MTTR
- D. RPO

**Correct Answer:** D

**Section:** (none)

**Explanation**

**Explanation/Reference:**

**QUESTION 11**

A cloud implementation engineer successfully created a new VM. However, the engineer notices the new VM is not accessible from another network. A ping test works from another VM on the same subnet. Which of the following is the MOST likely problem?

- A. Incorrect subnet
- B. Incorrect host IP address
- C. Incorrect VLAN
- D. Incorrect gateway

**Correct Answer:** A

**Section:** (none)

**Explanation**

**Explanation/Reference:**

#### **QUESTION 12**

A cloud administrator uses a script to automatically restart all the servers running in the public cloud provider environment, which hosts e-commerce applications. The administrator decides to implement the same script for a similar environment that hosts the finance applications. After verifying the script is deployed to the public cloud environment for finance, the administrator schedules a job to run at 9:00 a.m. After 9:00 a.m., the administrator receives a report from the e-commerce team that the application is experiencing outages. Which of the following should the administrator do to resolve the issue?

- A. Update the version of the CLI tool for the public cloud provider.
- B. Copy the script up to a bastion host in the environment and run it from there.
- C. Validate the access credentials for the cloud provider are correct.
- D. Debug the script and modify it to remove the flawed logic.

**Correct Answer:** C

**Section:** (none)

**Explanation**

**Explanation/Reference:**

#### **QUESTION 13**

A company wants to take advantage of cloud benefits while retaining control of and maintaining compliance with all its security policy obligations. Based on the non-functional requirements, which of the following should the company use?

- A. Hybrid cloud, as use is restricted to trusted customers
- B. IaaS, as the cloud provider has a minimal level of security responsibility
- C. PaaS, as the cloud customer has the most security responsibility
- D. SaaS, as the cloud provider has less security responsibility

**Correct Answer:** B

**Section:** (none)

**Explanation**

**Explanation/Reference:**

**QUESTION 14**

Several suspicious emails are being reported from end users. Organizational email is hosted by a SaaS provider. Upon investigation, the URL in the email links to a phishing site where users are prompted to enter their domain credentials to reset their passwords. Which of the following should the cloud administrator do to protect potential account compromise?

- A. Forward the email to the systems team distribution list and provide the compromised user list.
- B. Click on the URL link to verify the website and enter false domain credentials.
- C. Change the encryption key for the entire organization and lock out all users from using email until the issue is remediated.
- D. Notify users who received the email to reset their passwords regardless of whether they click on the URL.

**Correct Answer: C**

**Section: (none)**

**Explanation**

**Explanation/Reference:**

**QUESTION 15**

A cloud administrator has deployed a new all-flash storage array with deduplication and compression enabled, and moved some of the VMs into it. The goal was to achieve 4:1 storage efficiency while maintaining sub-millisecond latency. Which of the following results would BEST suit the requirements?

- A. Compression 1:1  
Deduplication 4:1  
Overall savings 4:1  
Average latency 1.0ms
- B. Compression 1.5:1  
Deduplication 1.8:1  
Overall savings 2.2:1  
Average latency 600us
- C. Compression 1.3:1  
Deduplication 3.1:1  
Overall savings 4.3:1  
Average latency 900us
- D. Compression 1.8:1  
Deduplication 2.7:1  
Overall savings 4.2:1  
Average latency 1.2ms



**Correct Answer:** D

**Section:** (none)

**Explanation**

**Explanation/Reference:**

**QUESTION 16**

A newly established CSP allows for drive shipping to upload new data into the environment. Sensitive data on 40TB of storage needs to be transferred within one week. Which of the following is the MOST efficient and secure method for shipment of the data to the CSP with minimal downtime?

- A. Create a VPN between the sites and schedule data transfer during non-business hours.
- B. Copy the data to encrypted drives and use the CSP-certified shipping provider.
- C. Compress and SFTP the data to the CSP.
- D. Move the data to encrypted drives and use the CSP-certified shipping provider.

**Correct Answer:** D

**Section:** (none)

**Explanation**

**Explanation/Reference:**

**QUESTION 17**

A manufacturing company's current security policy mandates PII is not stored in the SaaS solution. Which of the following configuration controls should be used to block sensitive information from being stored in the SaaS solution?

- A. Implement file-level encryption.
- B. Implement a network ACL.
- C. Implement an IPS.
- D. Implement content filtering.

**Correct Answer:** B

**Section:** (none)

**Explanation**

**Explanation/Reference:**

**QUESTION 18**

A technician receives a report of system utilization:

	Current %	Past 30 days %	Past 60 days %	Past 90 days %
CPU	30	26	45	22
RAM	75	55	45	35
Disk	80	80	80	80
Bandwidth	70	75	80	85

Which of the following additional resources should the technician add FIRST given the trend data shown above?

- A. CPU
- B. Disk
- C. Bandwidth
- D. RAM

**Correct Answer:** B

**Section:** (none)

**Explanation**

**Explanation/Reference:**

**QUESTION 19**

A company wants to leverage a SaaS provider for its back-office services, and security is paramount. Which of the following solutions should a cloud engineer deploy to BEST meet the security requirements?

- A. Firewall
- B. IPS/IDS
- C. Proxy gateway
- D. CASB

**Correct Answer:** D

**Section:** (none)

**Explanation**

**Explanation/Reference:**

### QUESTION 20

A company upgraded a hosted vulnerability scanner to the latest version, and now tickets are not being created to assign critical vulnerabilities. After confirming the ticketing issue, all the scanning services are confirmed to be running on the VM. Which of the following is the MOST likely cause and best method to fix the issue?

- A. There was an IP change to the VM. Make changes to the server properties.
- B. The upgrade has a bug Reboot the server and attempt the upgrade again.
- C. The vulnerability scanner is on a different subnet. Open the ports, and it will reconnect.
- D. There is an application compatibility issue. Roll back to the previous working backup.

**Correct Answer:** D

**Section:** (none)

**Explanation**

**Explanation/Reference:**

### QUESTION 21

A system's application servers need to be patched. The requirements for maintenance work are as follows:

- System downtime is not allowed.
- The application server in use must be in the sane patch status.
- System performance must be maintained during patching work.
- Testing after patching must be done before the application server is in use.
- If any trouble occurs, recover the previous version in ten minutes.

Which of the following methodologies should be selected?



<https://www.gratisexam.com/>

- A. Rolling update
- B. Patching directly
- C. Blue-green deployment

<https://www.gratisexam.com/>

D. Three staging environments

**Correct Answer:** D

**Section:** (none)

**Explanation**

**Explanation/Reference:**

#### **QUESTION 22**

A customer recently provisioned a new server on the IaaS. The IP address assigned from the pool resolves to another hostname. Some user traffic is being dumped or is causing slowness because of this issue. Which of the following maintenance activities does the provider need to perform to prevent this issue?

- A. Use cloud provider tools to remove orphaned resources.
- B. Initiate resource reclamation.
- C. Run a script to remove stale DNS entries.
- D. Update outdated security firewall configurations.

**Correct Answer:** C

**Section:** (none)

**Explanation**

**Explanation/Reference:**

#### **QUESTION 23**

A university is running a DNA decoding project that will take seven years if it runs on its current internal mainframe. The university negotiated a deal with a large cloud provider, which will donate its cloud resource to process the DNA decoding during the low peak time throughout the world. Which of the following is the MOST important resource the university should ask the cloud provider to donate?

- A. A large storage for the DNA decoding results
- B. A larger pipe to transfer the results
- C. A closer datacenter to the university
- D. Any available compute resource

**Correct Answer:** C

**Section:** (none)

**Explanation**

**Explanation/Reference:**

**QUESTION 24**

A storage administrator must choose the best replication methodology for storage.

- The datacenters are on opposite sides of the country.
- The RPO is 24 hours.
- Replication and customer access use the same connections.
- Replication should not impact customer access during the day.

Which of the following solutions would BEST meet these requirements?

- A. Asynchronous
- B. Regional
- C. Multiregional
- D. Synchronous

**Correct Answer: A**

**Section: (none)**

**Explanation**

**Explanation/Reference:**

**QUESTION 25**

A company uses its own private cloud, which has few available resources. Mission-critical systems and other information systems are running on it. A new system will be deployed on the private cloud. The following tests are included in the test plan:

- Load test (2h)
- Backup/restore test (6h)
- Functional test (8h)
- Failover test (1h)

The work schedule of the existing system is shown below.

	System open	System close	Batch job
ERP (mission critical)	9:00	22:00	22:00-00:00
Groupware	24h active		no batch
Internal web	24h active		06:00-08:00
Official website	24h active		00:00-00:30

To minimize the effect to the existing system, which of the following schedules is MOST suitable for the load test?

- A. 02:00-04:00
- B. 09:00-12:00
- C. 18:00-20:00
- D. 22:00-00:00

**Correct Answer: C**

**Section: (none)**

**Explanation**

**Explanation/Reference:**

#### QUESTION 26

A cloud administrator is tasked with ensuring redundancy and high availability of an IaaS cloud platform environment. The administrator is given the following requirements:

- Two web servers must share the same configurations and service client connections evenly.
- Two database servers must share data and configurations, with only one being used at a time.

Given the above, which of the following should the administrator propose to BEST meet these requirements? (Select TWO).

- A. The web server should be configured with a round-robin DNS with a CNAME record.
- B. The web server should be configured with a load balancer with a virtual IP address.
- C. The database server should be configured as an active-active cluster.
- D. The database server should be configured as an active-passive cluster.
- E. The availability aspect of the request does not currently exist in the IaaS cloud platform.
- F. The redundancy aspect of the request does not currently exist in the IaaS cloud platform.

**Correct Answer: AD**

**Section: (none)**

**Explanation****Explanation/Reference:****QUESTION 27**

In an IaaS model, to which of the following methodologies would the client apply a list of OS patches, assuming approval from CAB has been given?

- A. Using a patch management system, identify the hypervisor type, select a group of hypervisors to be patched, and perform a rolling application of patches.
- B. Using a patch management system, identify the guests that require patching, and select and apply the patches.
- C. Using a patch management system, identify the applications needing the patch, select the required application in a patch management console, and apply the patches.
- D. Using a patch management system, identify the services that require patching, and select and apply the patches.

**Correct Answer: A**

**Section: (none)**

**Explanation****Explanation/Reference:****QUESTION 28**

A cloud administrator has finished building a virtual server template in a public cloud environment. The administrator is now cloning six servers from that template. Each server is configured with one private IP address and one public IP address. After starting the server instances, the cloud administrator notices that two of the servers do not have a public IP address. Which of the following is the MOST likely cause?

- A. The maximum number of public IP addresses has already been reached.
- B. The two servers are not attached to the correct public subnet.
- C. There is no Internet gateway configured in the cloud environment.
- D. The two servers do not have enough virtual network adapters attached.

**Correct Answer: D**

**Section: (none)**

**Explanation****Explanation/Reference:****QUESTION 29**

A public cloud provider recently updated one of its services to provide a new type of application load balancer. The cloud administrator is tasked with building out a

proof-of-concept using this new service type. The administrator sets out to update the scripts and notices the cloud provider does not list the load balancer as an available option type for deploying this service. Which of the following is the MOST likely reason?

- A. The administrator can deploy the new load balancer via the cloud provider's web console.
- B. The administrator needs to update the version of the CLI tool.
- C. The administrator needs to write a new script function to call this service.
- D. The administrator is not using the correct cloud provider account.

**Correct Answer:** B

**Section:** (none)

**Explanation**

**Explanation/Reference:**

### QUESTION 30

A cloud service provider wants to offer hardened virtual server images for provisioning purposes. This will enable users to use only the operating system services that are allowed by the provider. Which of the following tasks are MOST appropriate for the hardening process? (Select TWO).

- A. Disable automatic updates.
- B. Disable the command prompt.
- C. Disable unneeded ports and services.
- D. Disable the local administrator account.
- E. Disable the remote desktop connection.
- F. Disable complex passwords.

**Correct Answer:** AC

**Section:** (none)

**Explanation**

**Explanation/Reference:**

### QUESTION 31

A company security policy mandates education and training for new employees. The policy must outline acceptable use policies for SaaS applications. Given these requirements, which of the following security controls is BEST suited?

- A. Preventive
- B. Detective



- C. Corrective
- D. Physical

**Correct Answer:** C

**Section:** (none)

**Explanation**

**Explanation/Reference:**

### **QUESTION 32**

A small clinic is moving its health and accounting systems to a SaaS solution. The clinic holds patient- and business-sensitive information. Which of the following is the company expected to do to protect its data?

- A. Document, configure, and enforce strong account management policies.
- B. Disable and document unneeded ports and protocols on the SaaS servers.
- C. Install antivirus and disable unneeded services on all SaaS servers.
- D. Harden the underlying infrastructure: servers, firewalls, and load balancers.

**Correct Answer:** B

**Section:** (none)

**Explanation**

**Explanation/Reference:**

### **QUESTION 33**

A consultant is helping a large company migrate its development environment to a public cloud provider. The developers are working on a VDI solution. The development tools that employees utilize require greater control of the OS environment. Which of the following cloud types should the consultant implement?

- A. SaaS
- B. PaaS
- C. Bare metal service
- D. IaaS

**Correct Answer:** D

**Section:** (none)

**Explanation**

**Explanation/Reference:**

**QUESTION 34**

A company changed its policy to have seven-year data retention in the public cloud. Which of the following would be the MOST cost-effective way to meet retention requirements?

- A. Site mirroring
- B. Automated archiving
- C. Replication
- D. Third-party sites

**Correct Answer: B**

**Section: (none)**

**Explanation**

**Explanation/Reference:**

**QUESTION 35**

During peak times, users are unable to access their online wealth management applications in a timely fashion. The online banking application resides in a community cloud environment. Which of the following explains how the cloud systems administrator should start to resolve this issue?

- A. Access the cloud services portal and ensure memory ballooning is enabled.
- B. Access the cloud services portal and ensure there is adequate disk space available.
- C. Access the cloud services portal and ensure all users are accessing it through the same web service.
- D. Access the cloud services portal and ensure the ACLs are set correctly for the user community.

**Correct Answer: A**

**Section: (none)**

**Explanation**

**Explanation/Reference:**

**QUESTION 36**

A business is planning to migrate from a private cloud to a public cloud. To document business continuity, which of the following should be done FIRST?

- A. Develop a disaster recovery plan with partners/third parties.

- B. Define the set of application-based SLAs.
- C. Identify HA technology to provide failover.
- D. Define the scope of requirements.

**Correct Answer:** B

**Section:** (none)

**Explanation**

**Explanation/Reference:**

### QUESTION 37

Joe, a systems administrator, deployed a computer and storage for a system and took it to the application team. The next day, the application team claimed the database was slow. The deployment request, result, and current utilization data are shown below.

	Requested Resource	Deployment Result	Current Utilization
CPU	2 vCPU	2 vCPU	30%
Memory	8GB	8GB	100%
Storage	300GB	300GB	35%

Which of the following descriptions of the situation is correct?

- A. The deployment was done with the wrong memory configuration.
- B. The deployment was unsuccessful due to the cloud failure.
- C. The deployment was successful, but the capacity planning was inaccurate.
- D. The deployment was done with the wrong storage parameter.

**Correct Answer:** C

**Section:** (none)

**Explanation**

**Explanation/Reference:**

### QUESTION 38

A cloud administrator is adding several accounts for new development team interns. These interns will need access to some, but not all, of the resources and will only be working over the summer. Which of the following user provisioning techniques should be used?

- A. Create a single account for the interns to share. Set the expiration date for the account to six months.
- B. Create a role labeled "interns" with the appropriate permissions. Create a separate account with an expiration date for each intern and add each intern to that role.
- C. Create one template user account with the appropriate permissions and use it to clone the other accounts. Set an expiration date for each account individually.
- D. Create individual accounts for each intern, set the permissions and expiration date for each account, and link them to a temporary guests user group.

**Correct Answer:** C

**Section:** (none)

**Explanation**

**Explanation/Reference:**

#### **QUESTION 39**

After deploying new VMs, the systems administrator notices it is not possible to connect to them using network credentials; however, local accounts work. After logging in, the administrator notices the NTP servers are not set. Which of the following is MOST likely causing this issue?

- A. Directory services requires the use of NTP servers.
- B. The VMs are insufficiently licensed.
- C. There is a directory services outage.
- D. There is a time synchronization issue.

**Correct Answer:** D

**Section:** (none)

**Explanation**

**Explanation/Reference:**

#### **QUESTION 40**

A company has decided to scale its e-commerce application from its corporate datacenter to a commercial cloud provider to meet an anticipated increase in demand during an upcoming holiday. The majority of the application load takes place on the application server under normal conditions. For this reason, the company decides to deploy additional application servers into a commercial cloud provider using the on-premises orchestration engine that installs and configures common software and network configurations. The remote computing environment is connected to the on-premises datacenter via a site-to-site IPSec tunnel. The external DNS provider has been configured to use weighted round-robin routing to load balance connections from the Internet.

During testing, the company discovers that only 20% of connections completed successfully.

Review the network architecture and supporting documents and fulfill these requirements:  
Identify the correct options to provide adequate configuration for hybrid cloud architecture.

**Instructions:**

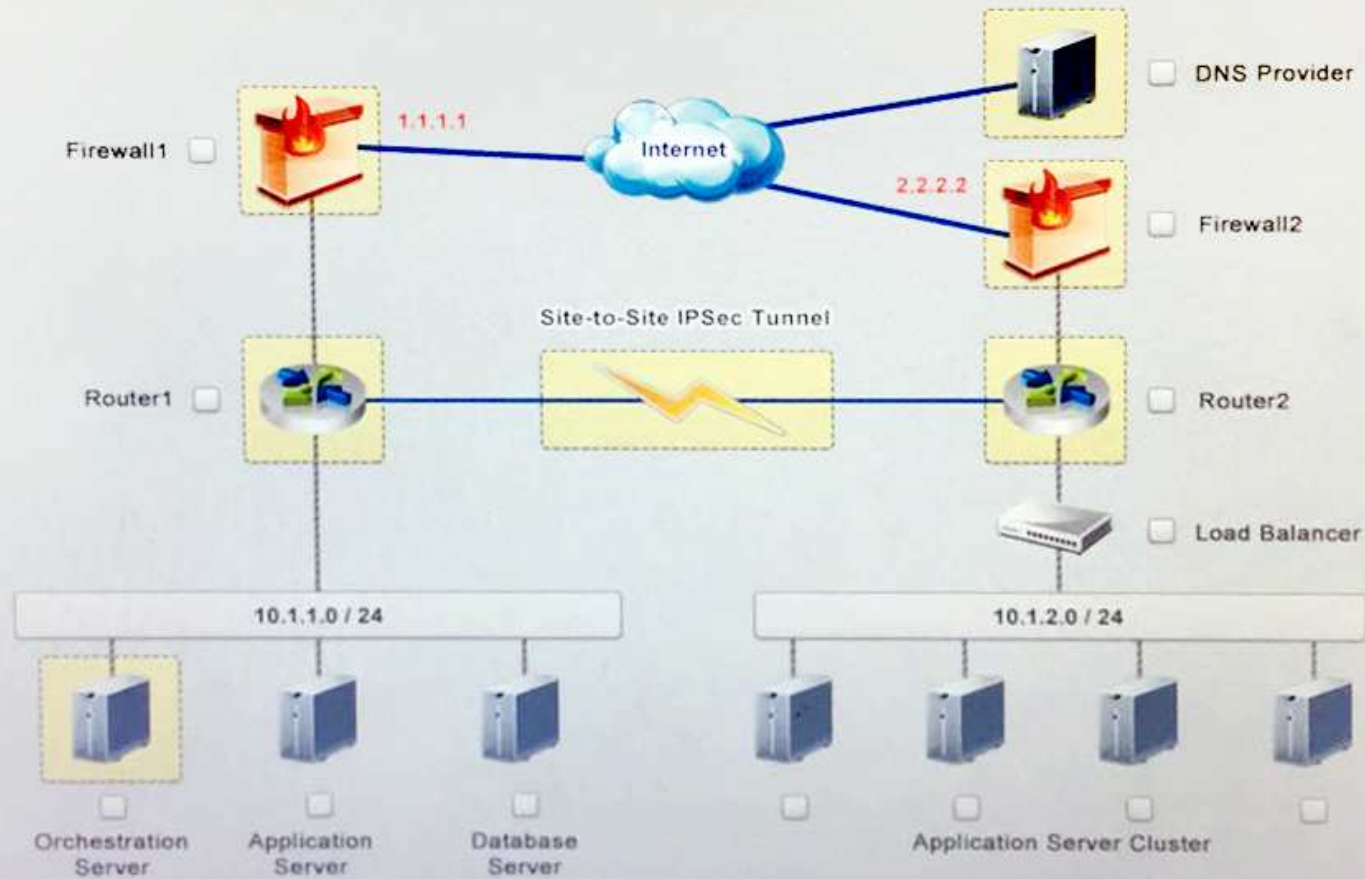
If at any time you would like to bring back the initial state of the simulation, please select the Reset button. When you have completed the simulation, please select the Done button to submit. Once the simulation is submitted, please select the Next button to continue.

**Simulation**

<https://www.gratisexam.com/>

## PART 1

Instruction: Click on each device to review more information of DNS, Firewall1, Firewall2, Router1, Router2, VPN and Orchestration Server.



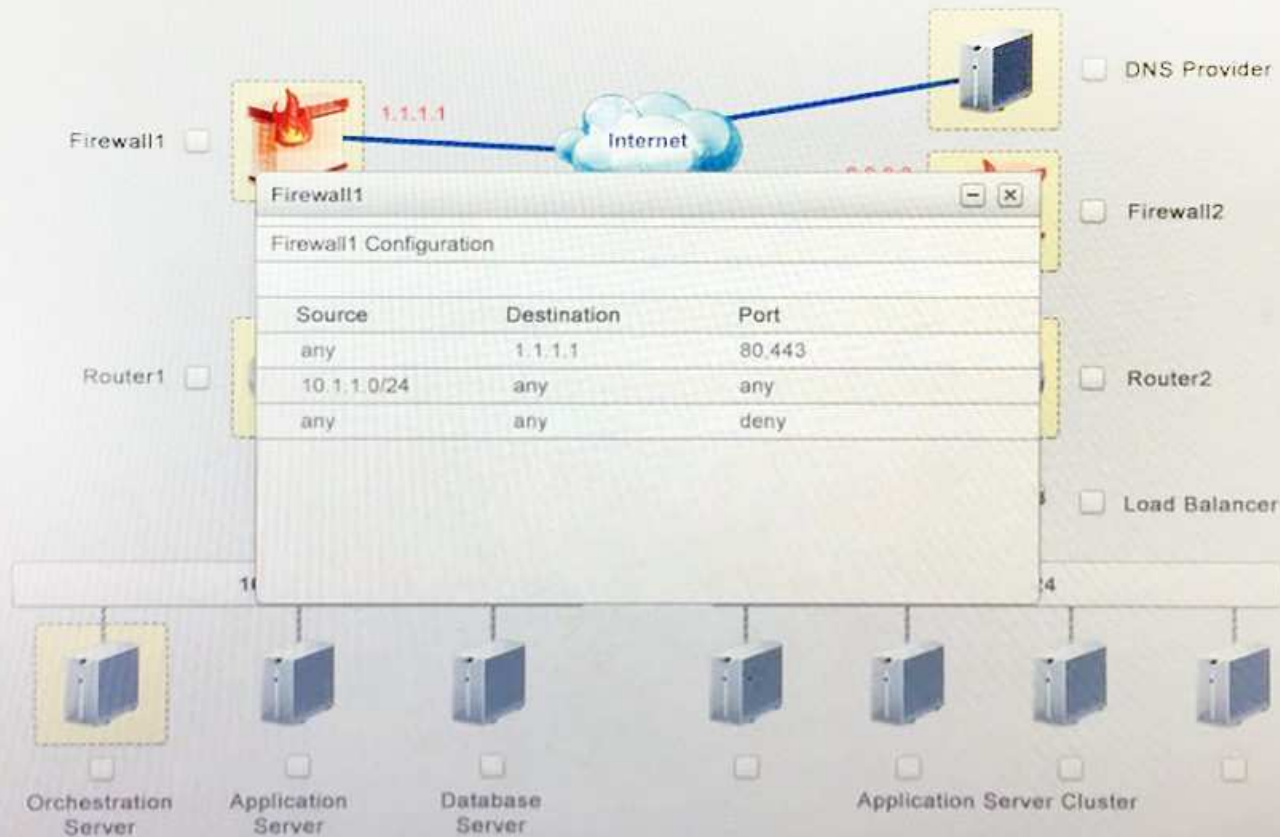
PART 1

PART 2

Clickable items

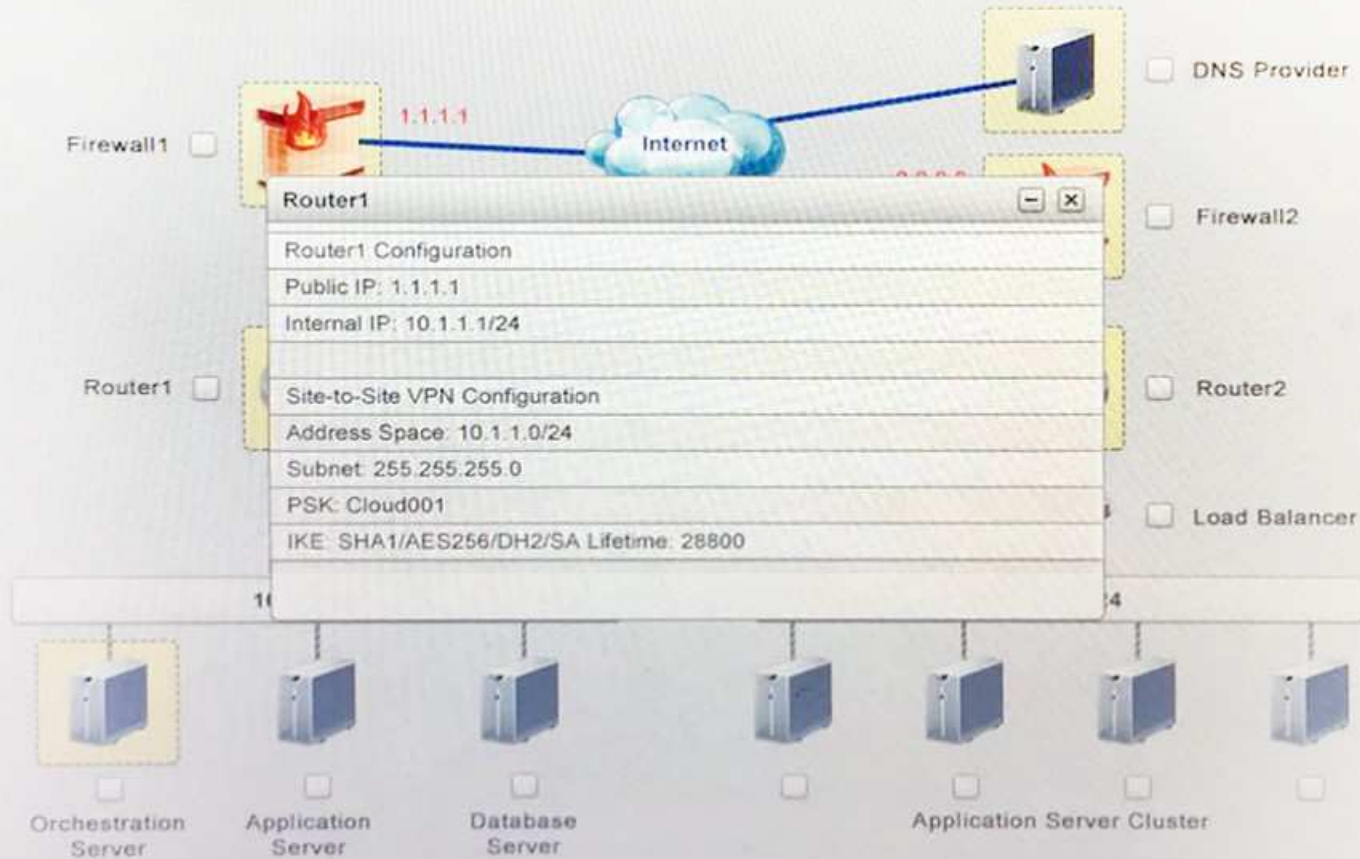
## PART 1

Instruction: Click on each device to review more information of DNS, Firewall1, Firewall2, Router1, Router2, VPN and Orchestration Server.



## PART 1

Instruction: Click on each device to review more information of DNS, Firewall1, Firewall2, Router1, Router2, VPN and Orchestration Server.



PART 1

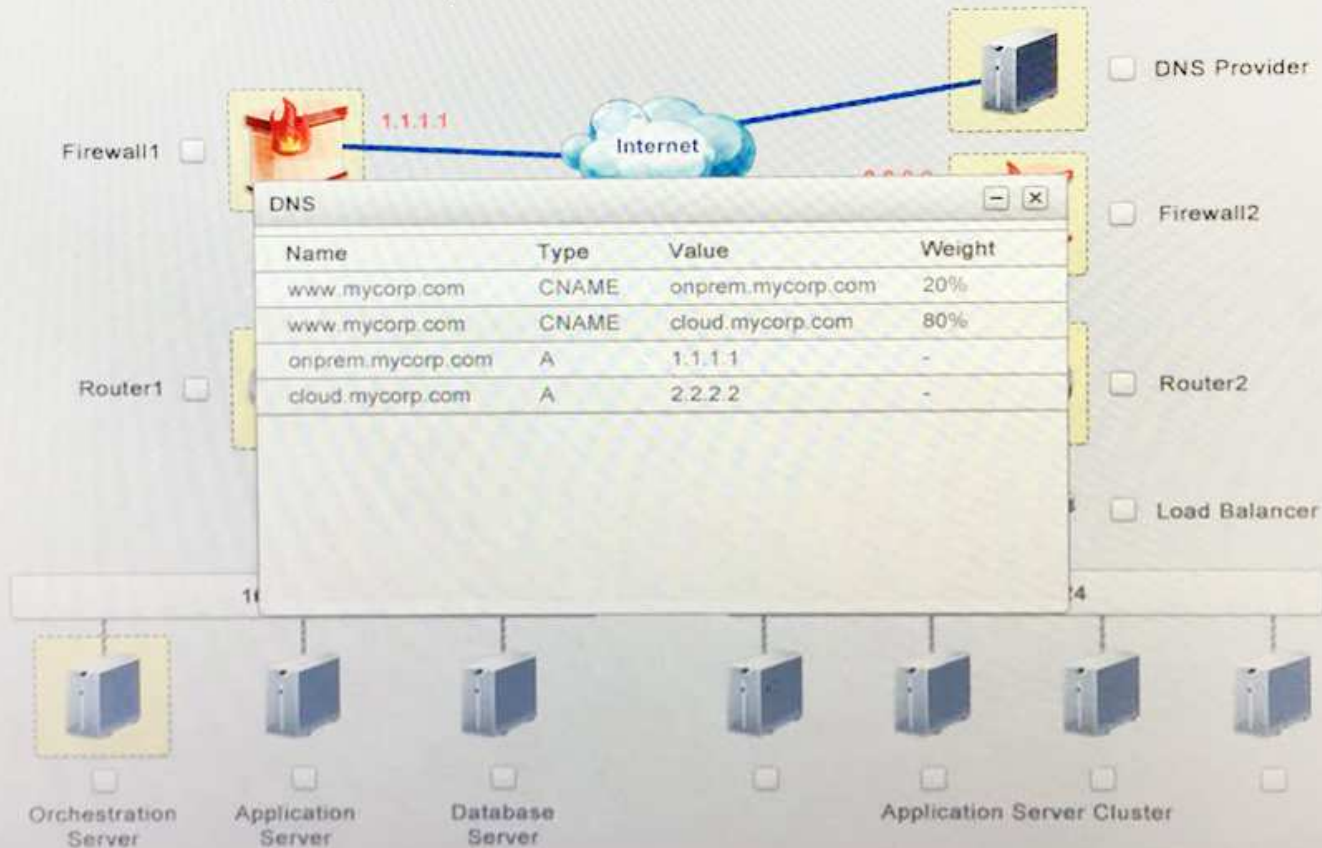
PART 2

Clickable items



## PART 1

Instruction: Click on each device to review more information of DNS, Firewall1, Firewall2, Router1, Router2, VPN and Orchestration Server.



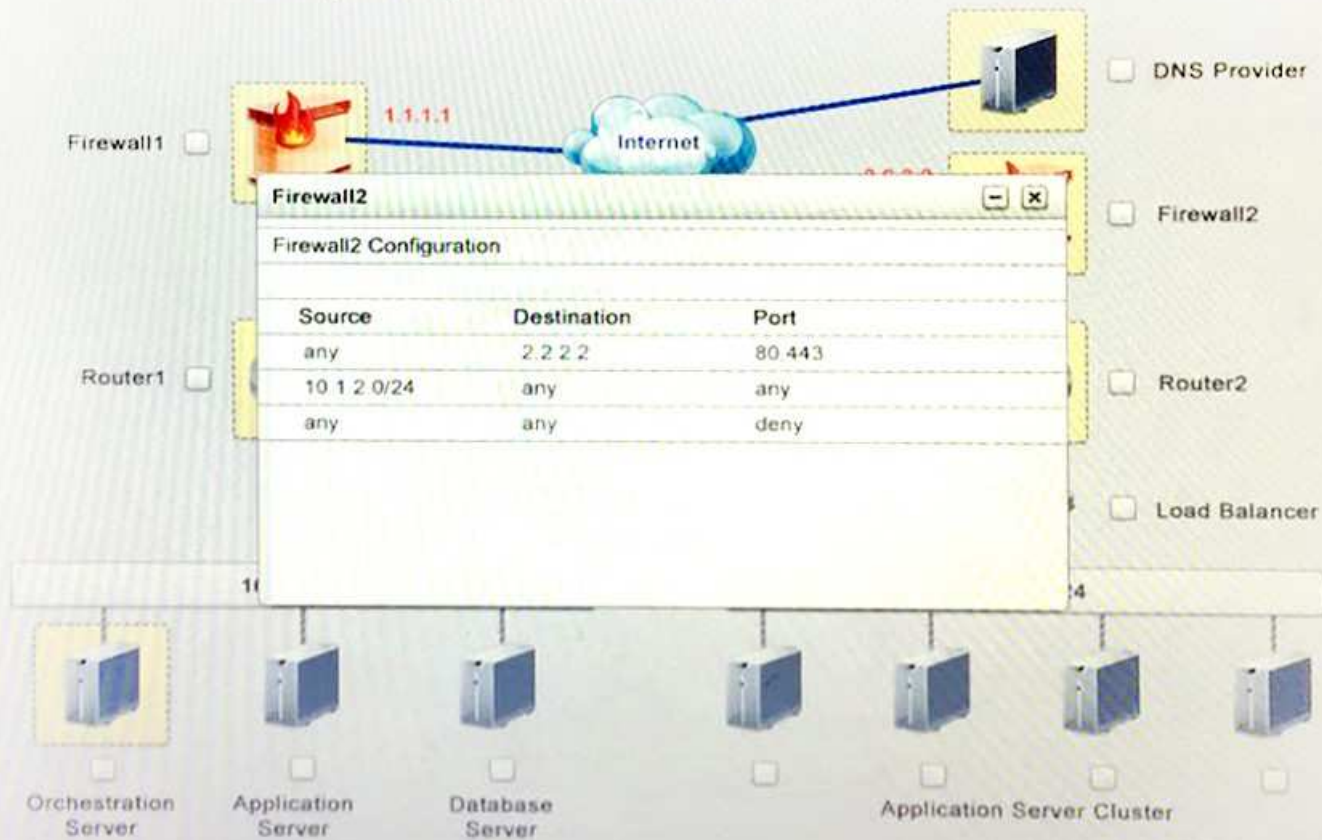
PART 1

PART 2

Clickable items

## PART 1

Instruction: Click on each device to review more information of DNS, Firewall1, Firewall2, Router1, Router2, VPN and Orchestration Server.



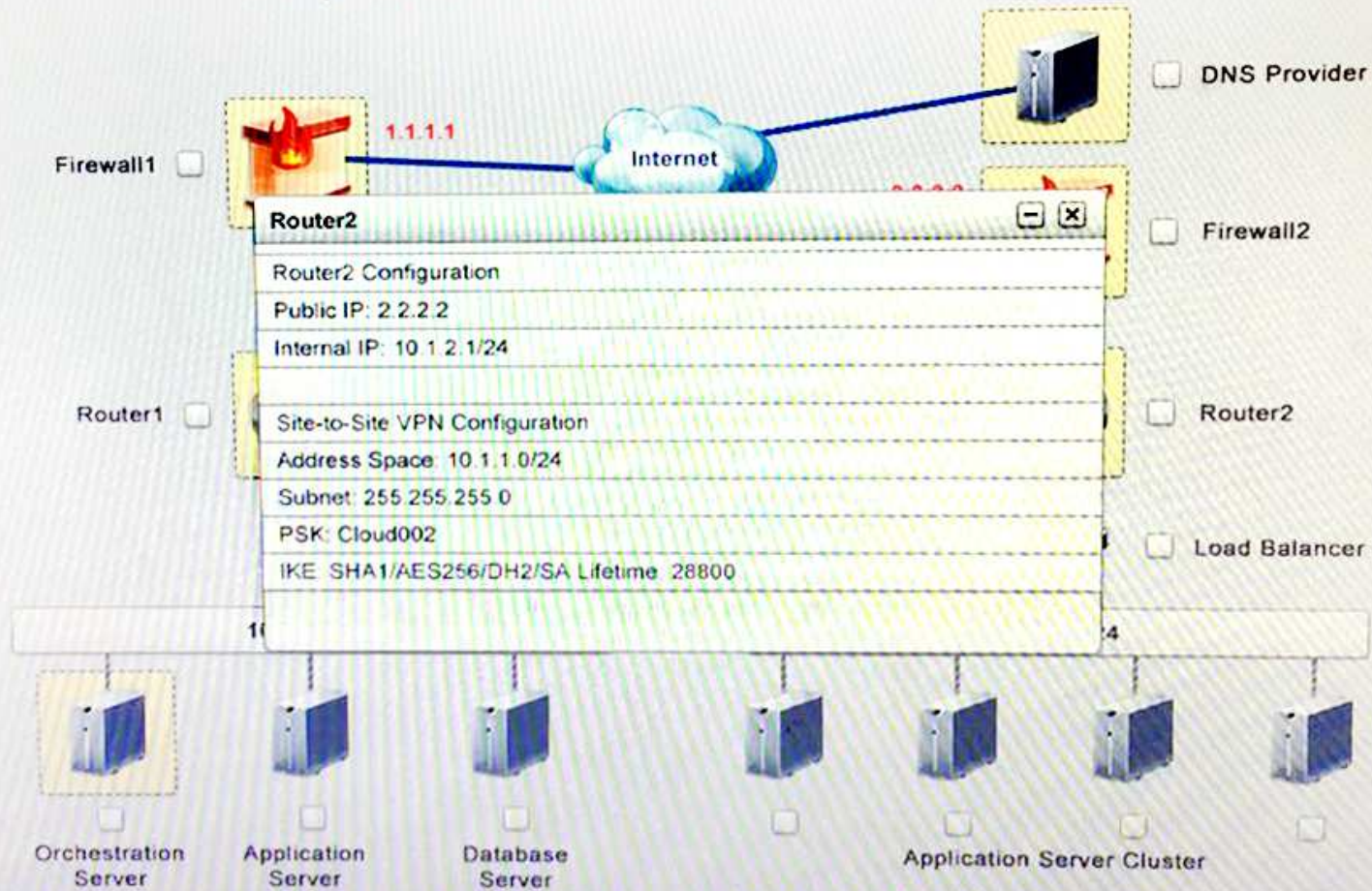
PART 1

PART 2

Clickable items

## PART 1

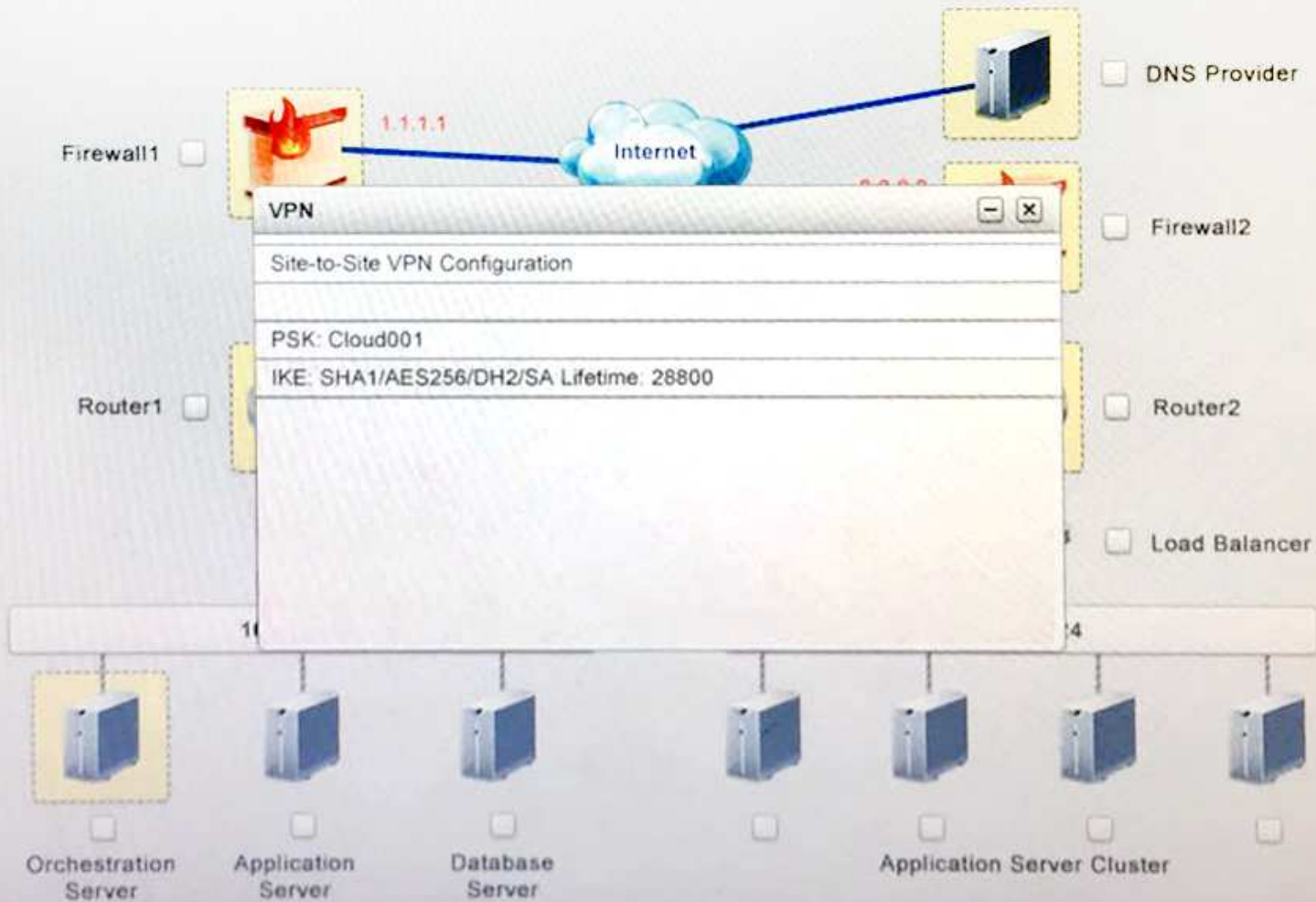
Instruction: Click on each device to review more information of DNS, Firewall1, Firewall2, Router1, Router2, VPN and Orchestration Server.





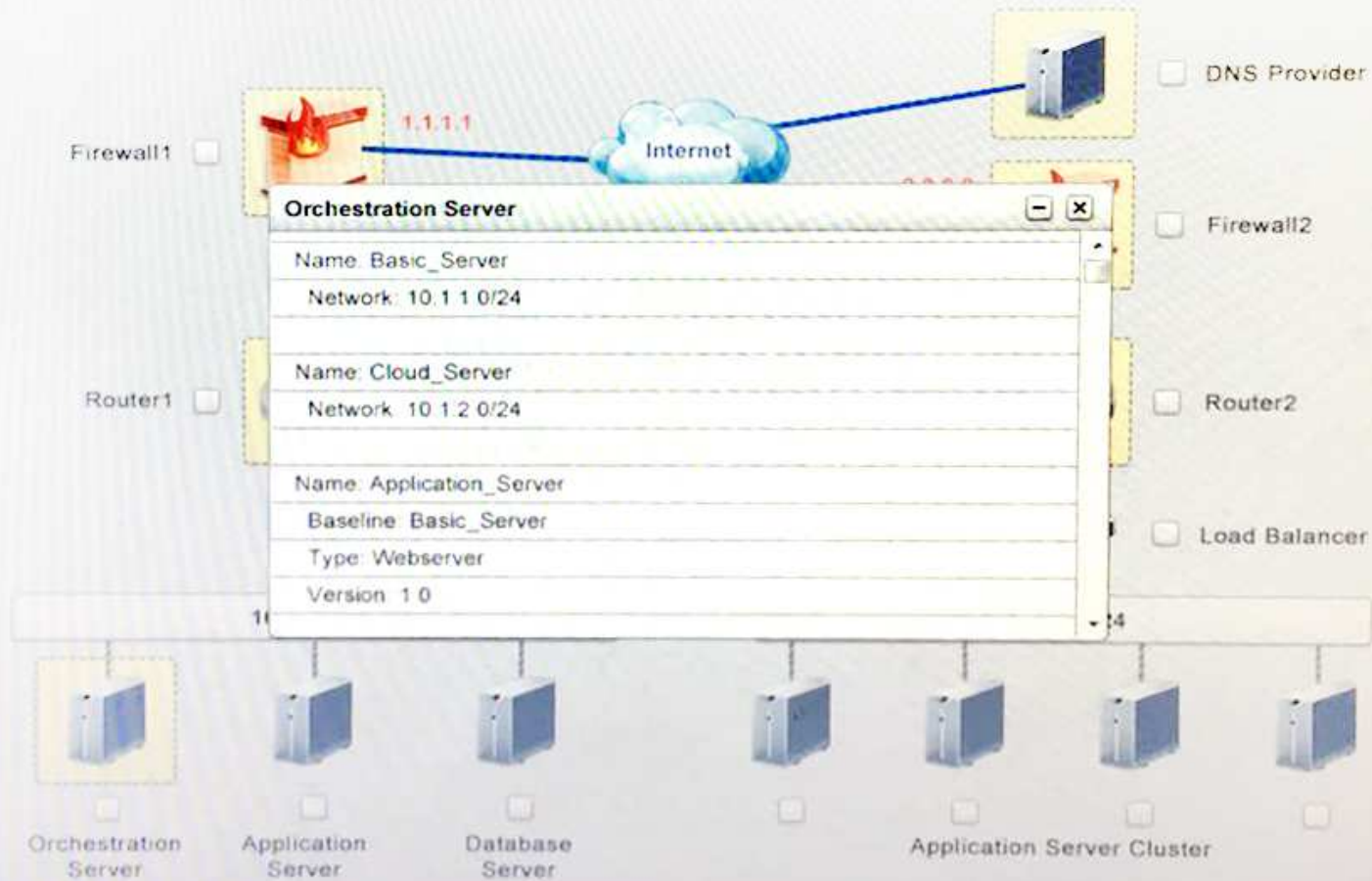
## PART 1

Instruction: Click on each device to review more information of DNS, Firewall1, Firewall2, Router1, Router2, VPN and Orchestration Server.



## PART 1

Instruction: Click on each device to review more information of DNS, Firewall1, Firewall2, Router1, Router2, VPN and Orchestration Server.

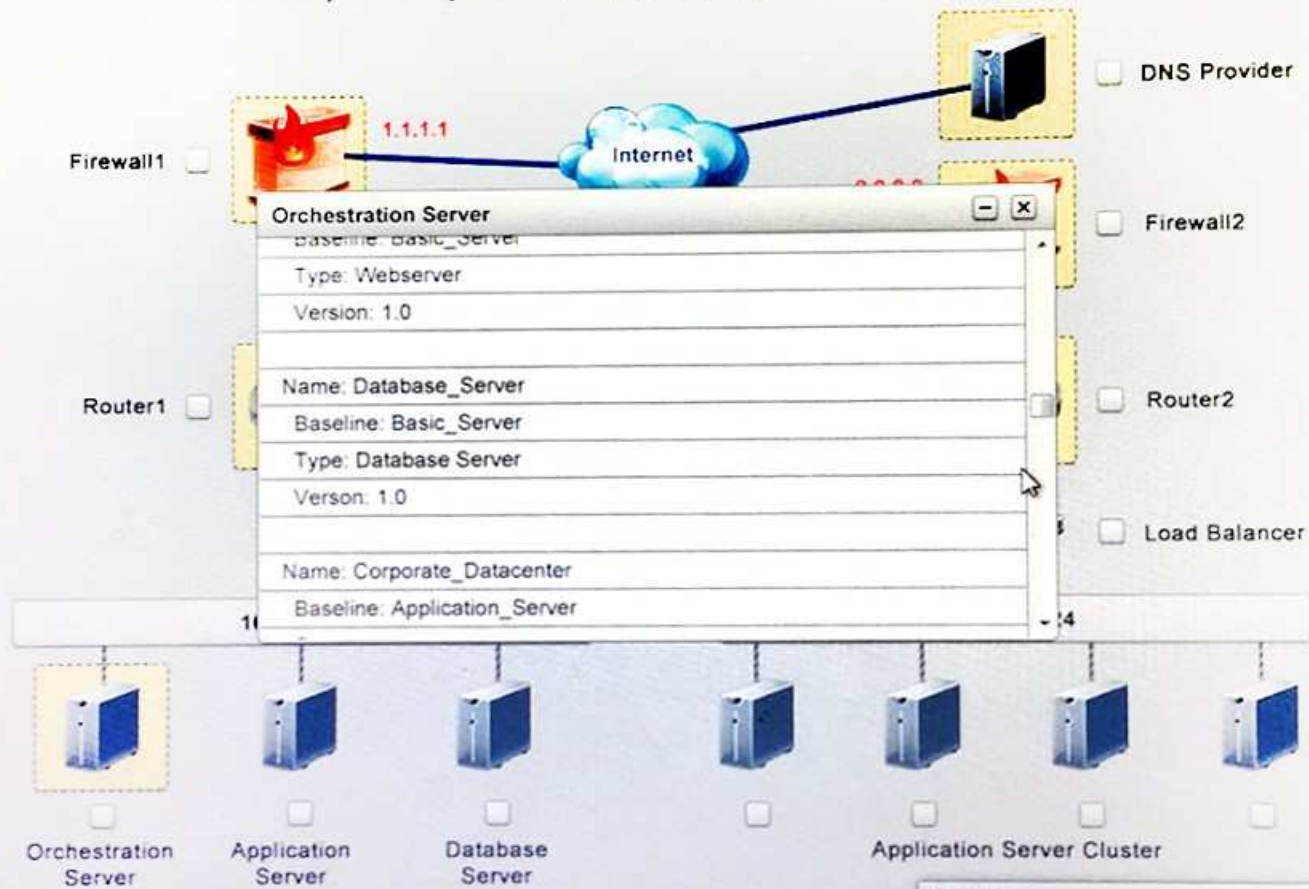


PART 1

PART 2

Clickable items

### Router1, Router2, VPN and Orchestration Server.



PART 1

PART 2

Question

A company has decided to scale its e-commerce application from its corporate datacenter to a commercial

Instruction: Click on each device to review more information of DNS, Firewall1, Firewall2, Router1, Router2, VPN and Orchestration Server.

**Orchestration Server**

Name: Corporate_Datacenter
Baseline: Application_Server
Count: 1
Name: Corporate_DataCenter
Baseline: Database_Server
Count: 1
Group: Cloud_Service_Provider
Baseline: Cloud_Server
Count: 4

**Question**

A company has decided to scale its e-commerce application from its corporate datacenter to a commercial cloud provider to meet its anticipated increase in demand.

Instruction: Only select a maximum of TWO options from the multiple choice question.

- A. Deploy a Replica of the Database Server in the Cloud Provider
- B. Update the PSK (Pre-shared key in Router2)

- C. Update the A record on the DNS from 2.2.2.2 to 1.1.1.1
- D. Promote deny All to allow All in Firewall1 and Firewall2
- E. Change the Address Space on Router2
- F. Change internal IP Address of Router1
- G. Reverse the Weight property in the two CNAME records on the DNS
- H. Add the Application Server at on-premises to the Load Balancer

**Correct Answer:** AH

**Section:** (none)

**Explanation**

**Explanation/Reference:**

#### **QUESTION 41**

Email users report that it takes more than one minute to open emails, including those without attachments. There are three email instances in three different regions hosted by the same CSP. Other applications hosted by the same CSP have no reported issues. Which of the following solutions BEST resolves the issue?

- A. Confirm that the email instances have sufficient bandwidth.
- B. Install monitoring software on the email instances.
- C. Check the antivirus software settings and disable real-time message scanning.
- D. Ensure the requested IOPS are being provided to the email instances.

**Correct Answer:** C

**Section:** (none)

**Explanation**

**Explanation/Reference:**

#### **QUESTION 42**

A company has an SLA of 15ms for storage latency.



	90 days ago	60 days ago	30 days ago	Now
Space usage	65%	70%	75%	80%
Average latency	8ms	10ms	15ms	25ms
Storage CPU utilization	50%	65%	90%	95%

Given the above metrics, which of the following is the MOST appropriate change to the environment?

- A. Add computing nodes and data nodes on the storage side.
- B. Add more storage shelves to the current array.
- C. Enable compression on the storage side.
- D. Enable deduplication on the storage side.

**Correct Answer: C**

**Section: (none)**

**Explanation**

**Explanation/Reference:**

#### QUESTION 43

A VM was deleted by mistake today at 11:05 a.m. Below are the backups currently available for the VM:

Backup Type	Date Time
Incremental	Today 00:00
Incremental	Yesterday 00:00
Synthetic-full	Yesterday 12:00
Full	Three days ago 00:00
Snapshot	Today 11:00
Snapshot	Today 07:00
Snapshot	Today 03:00

Crash-consistent restore is acceptable. Which of the following backups should be chosen?

- A. Snapshot from today at 11:00

- B. Full from three days ago at 00:00
- C. Incremental from today at 00:00
- D. Synthetic-full from yesterday at 12:00

**Correct Answer:** A

**Section:** (none)

**Explanation**

**Explanation/Reference:**

#### **QUESTION 44**

A cloud administrator is configuring a bastion host. The bastion host will be used to administer systems in the cloud remotely from the administrator's on-premises desktop. The administrator is given the following requirements:

- Ensure port 22 is open on the host and only allow the public IP of the on-premises router/firewall.
- Ensure port 3389 is open on the host and only allow the public IP of the on-premises router/firewall.
- Harden these services with PKI (where applicable).

Given this scenario, which of the following should the administrator utilize to BEST address these requirements? (Select THREE).

- A. RDP protocol from the desktop to the bastion host
- B. Telnet protocol from the desktop to the bastion host
- C. SSH protocol from the desktop to the bastion host
- D. MD5 and RC4 with a signed certificate
- E. RSA and AES with a signed certificate
- F. Blowfish and SHA-1 with a signed certificate
- G. VNC protocol from the desktop to the bastion host

**Correct Answer:** ACD

**Section:** (none)

**Explanation**

**Explanation/Reference:**

#### **QUESTION 45**

After scheduled network maintenance, users report that an externally hosted web application is particularly slow to load. Small items on the page load such as text documents and markup, but larger multimedia files do not load. Which of the following is the MOST likely cause of the reported issues?

- A. Incorrect MTU in the network segment
- B. Misconfiguration of QoS settings
- C. Incorrect VLAN for the affected PCs
- D. Excessive latency on the local LAN segment

**Correct Answer:** B

**Section:** (none)

**Explanation**

**Explanation/Reference:**

#### **QUESTION 46**

A software solution must be deployed based on the most granular access level. Which of the following methods should be used to meet the requirements?

- A. Group
- B. RBAC
- C. File-based
- D. LDAP

**Correct Answer:** B

**Section:** (none)

**Explanation**

**Explanation/Reference:**

#### **QUESTION 47**

After monthly patching, a large number of users who are logged onto the network report that application links from a company's intranet site, which previously opened directly into the website, are now prompting for logon information. Application administrators confirm that the websites in question are working properly. Which of the following is the MOST likely cause of the new behavior?

- A. SSO issues
- B. Password expiration
- C. Account lockout
- D. Certificate expiration

**Correct Answer:** A

**Section: (none)**

**Explanation**

**Explanation/Reference:**

**QUESTION 48**

A cloud administrator is analyzing usage trends for a website housed within an IaaS cloud platform. The administrator notices that traffic and visitors to the site quadrupled from the normal baseline during the holiday season. The environment has a load balancer that uses standardized VMs to host the applications. Given this scenario, which of the following would be the MOST efficient, provide no downtime, and address the temporary spike in traffic?

- A. Implement an upward vertical scaling solution.
- B. Implement a downward vertical scaling solution.
- C. Implement an inward horizontal scaling solution.
- D. Implement an outward horizontal scaling solution.

**Correct Answer: A**

**Section: (none)**

**Explanation**

**Explanation/Reference:**

**QUESTION 49**

A cloud service administrator is consuming PaaS services and is performing baseline configuration tests. Which of the following is part of the PaaS consumer's responsibility with respect to the baseline confirmation tests?

- A. Application versions
- B. CPU utilization
- C. RAM utilization
- D. Operating system versions

**Correct Answer: B**

**Section: (none)**

**Explanation**

**Explanation/Reference:**

**QUESTION 50**

An engineer is configuring the monitoring for a new application server. During the day, the CPU on the server is baselined at approximately 30% utilization. At midnight, a batch job is scheduled to run that will drive the CPU utilization up to 75% for approximately an hour. Any time the CPU utilization is at 40% or higher for longer than ten minutes, administrators will receive an alert. Which of the following is the BEST method to ensure administrators do not experience message fatigue due to false alerts?

- A. Set a different threshold during the batch peak time.
- B. Increase the alert time threshold to 65 minutes.
- C. Increase the alert utilization threshold to 80%.
- D. Manually disable monitoring during the batch job.

**Correct Answer:** A

**Section:** (none)

**Explanation**

**Explanation/Reference:**

**QUESTION 51**

An organization is replacing its internal human resources system with a SaaS-based application. The solution is multi-tenant, and the organization wants to ensure ubiquitous access while preventing password replay attacks. Which of the following would BEST help to mitigate the risk?

- A. Implement destination resources authentication.
- B. Require and implement two-factor authentication.
- C. Remove administrator privileges from users' laptops.
- D. Combine network authentication and physical security in one card/token.

**Correct Answer:** B

**Section:** (none)

**Explanation**

**Explanation/Reference:**

**QUESTION 52**

A company is implementing a SaaS solution with a large user base. SaaS solution licensing is user based, and user management is critical to keep the cost in check. Which of the following is the MOST efficient way to meet this requirement?

- A. Have the administrator of the SaaS solution keep track of user activities.

- B. Have a nightly upload to the SaaS provider of the current user base based on API call.
- C. Have users remove their SaaS accounts when they no longer need the service.
- D. Have a weekly user management script maintain the SaaS user base.

**Correct Answer:** A

**Section:** (none)

**Explanation**

**Explanation/Reference:**

#### QUESTION 53

A cloud administrator updates the syslog forwarder configuration on a local server in production to use a different port. The development team is no longer receiving the audit logs from that server. However, the security team can retrieve and search the logs for the same server. Which of the following is MOST likely the issue?

- A. The development team is not looking at the correct server when querying for the logs.
- B. The security team has greater permissions than the development team.
- C. The audit logging service has been disabled on the server.
- D. The development team's syslog server is configured to listen on the wrong port.

**Correct Answer:** B

**Section:** (none)

**Explanation**

**Explanation/Reference:**

#### QUESTION 54

Performance on a new private cloud deployment is not meeting expectations. An engineer has determined the virtualization host is experiencing high ready/wait times. VMs with the following configurations and metrics currently reside on the host:

Name	CPU Count	CPU Utilization	Memory Size	Memory Utilization
VM1	16	20%	32GB	80%
VM2	4	80%	32GB	90%
VM3	4	30%	16GB	35%
VM4	12	90%	24GB	50%

Which of the following troubleshooting choices would MOST likely be used to bring the high ready/wait times to meet the expected baseline?

- A. Decrease the CPU count for VM1.
- B. Increase the memory size for VM2.
- C. Decrease the memory size for VM3.
- D. Increase the CPU count for VM4.

**Correct Answer:** B

**Section:** (none)

**Explanation**

**Explanation/Reference:**

#### **QUESTION 55**

A cloud administrator is securing access to a VM using an IaaS cloud platform. The administrator must perform this task using an automated method, allow administrators to perform any method and expose any property of the VM, deny access for everyone else, and allow only read-only access to everyone else. Given this scenario, which of the following should the administrator use to BEST meet these requirements?

- A. jQuery
- B. JavaScript
- C. Java
- D. JSON

**Correct Answer:** C

**Section:** (none)

**Explanation**

**Explanation/Reference:**

#### **QUESTION 56**

A company is deploying a new instant messaging app to allow for communications with external vendors. Each entity will host its own version of the application, but users must be able to talk between the companies. Which of the following security techniques would MOST likely be used to allow this to happen?

- A. User synchronization
- B. Password synchronization
- C. Public federation
- D. Multifactor authentication

**Correct Answer:** D

**Section:** (none)

**Explanation**

**Explanation/Reference:**

#### **QUESTION 57**

A software company recently moved all of its development testing to a public cloud environment. The company primarily uses IaaS to deploy and test its code. The company needs the software developers to be more agile and efficient when testing application code. Which of the following backup types should the developers use to BEST ensure the speedy recovery of a system if it is damaged?

- A. Snapshots
- B. Full
- C. Incremental
- D. Differential

**Correct Answer:** C

**Section:** (none)

**Explanation**

**Explanation/Reference:**

#### **QUESTION 58**

A cloud administrator works for an online gaming company that is hosting its multiplayer servers in a public IaaS cloud. The following metrics are reported during a controlled beta test:

RAM usage	80%
Bandwidth usage	50%
Average ping	800ms

The beta test shows poor performance for gamers. Which of the following should the cloud administrator implement FIRST to improve the gamers' experience?

- A. Scale the deployment of multiplayer servers by doubling the number of VMs.
- B. Increase network bandwidth on the multiplayer servers.
- C. Increase the RAM on the multiplayer servers.
- D. Deploy multiplayer servers in public cloud locations closer to the user base.

**Correct Answer:** B



**Section: (none)**

**Explanation**

**Explanation/Reference:**

**QUESTION 59**

A cloud administrator has configured a connection between two virtual private cloud environments at a public cloud provider that are each in different accounts. The administrator has configured the accounts correctly so they can connect to each other's resources. Both cloud environments have policies that allow anyone from 0.0.0.0/0 on TCP port 22. The following table shows the network configuration information:

Virtual Private Cloud	IP Range	Server IP Address
Finance	10.250.40.0/24	10.250.40.100
Sales	10.250.48.0/24	10.250.48.214

However, the administrator is unable to establish an SSH connection from a server in 10.250.40.100 to 10.250.48.214. Which of the following is the MOST likely issue?

- A. The network ACL is not configured to allow SSH access.
- B. The IP configuration on one of the servers is incorrect.
- C. The administrator does not have sufficient credentials.
- D. The routing tables have not been updated correctly.

**Correct Answer: D**

**Section: (none)**

**Explanation**

**Explanation/Reference:**

**QUESTION 60**

A company is looking for a hardware feature with the least amount of downtime in terms of firmware upgrades. Which of the following features BEST meet this requirement?

- A. In-service upgrades
- B. Rolling upgrades
- C. Failover upgrades
- D. User-mode upgrades

**Correct Answer:** B

**Section:** (none)

**Explanation**

**Explanation/Reference:**

**QUESTION 61**

A company uses SaaS and IaaS solutions from multiple cloud providers. Users report that this requires them to manage and remember multiple user accounts and passwords. Which of the following solutions should be implemented to fix this issue?

- A. SSO
- B. Federation
- C. Password synchronization
- D. Lowered password complexity
- E. Multifactor authentication

**Correct Answer:** A

**Section:** (none)

**Explanation**

**Explanation/Reference:**

**QUESTION 62**

Company A just acquired Company B and needs to migrate critical applications to Company A's private cloud infrastructure. Company B's applications are running on legacy servers and cannot be removed from the current datacenter where they reside. Which of the following migration strategies should the cloud administrator use?

- A. V2V
- B. P2V
- C. V2P
- D. P2P

**Correct Answer:** C

**Section:** (none)

**Explanation**

**Explanation/Reference:**

**QUESTION 63**

An e-commerce business recently experienced a two-hour outage from its hosted web service provider. According to the SLA, the business needs to determine how much data can be restored. On which of the following service-level components should the business focus?

- A. MTTR
- B. RPO
- C. MTBF
- D. RTO

**Correct Answer: B**

**Section: (none)**

**Explanation**

**Explanation/Reference:**

**QUESTION 64**

A hospital is leveraging a third-party-hosted, SaaS-based EMRS for all its regional locations. The EMRS will consolidate all existent stand-alone regional systems. All regional systems managers are concerned about the new system availability. Which of the following should the new EMRS architect do to address the manager's concerns?

- A. Analyze business requirements and design the new EMRS to run the most popular IaaS provider that meets the health industry's needs.
- B. Analyze and communicate to regional managers that dual service providers will be used at all regional locations.
- C. Analyze business requirements, and design and deploy client-to-site VPN for all regional hospital staff with two-factor authentication or a client certificate.
- D. Analyze business requirements and deploy the SaaS EMRS within the hospital's headquarters and create a client-to-site VPN from each region.

**Correct Answer: C**

**Section: (none)**

**Explanation**

**Explanation/Reference:**

**QUESTION 65**

A physical server with SSD drives that hosts an IO-intensive database has been migrated into a private cloud to ensure further growth possibilities and accommodate quarterly load spikes (up to 10,000 IOPs). The requirement is to have log partition latency below 5ms and data partition latency below 10ms, irrespective of the load spikes. A cloud administrator has conducted extensive tests after the migration. Which of the following test results would ensure the

migration is successful?

A.

	5000 IOPs	10,000 IOPs
Log partition read latency	4ms	5ms
Log partition write latency	1ms	1ms
Data partition read latency	6ms	8ms
Data partition write latency	1ms	1ms

B.

	5000 IOPs	10,000 IOPs
Log partition read latency	4ms	5ms
Log partition write latency	1ms	1ms
Data partition read latency	6ms	11ms
Data partition write latency	800us	900us

C.

	5000 IOPs	10,000 IOPs
Log partition read latency	4ms	5ms
Log partition write latency	800us	900us
Data partition read latency	10ms	12ms
Data partition write latency	800us	900us

D.

	5000 IOPs	10,000 IOPs
Log partition read latency	4ms	5ms
Log partition write latency	10ms	10ms
Data partition read latency	10ms	10ms
Data partition write latency	10ms	10ms

**Correct Answer:** A

**Section:** (none)

**Explanation**

**Explanation/Reference:**

#### QUESTION 66

A company hosts its server in a public IaaS cloud. The company's management decides to migrate the servers to a different geographical region that is closer to

the user base. A cloud administrator creates a new environment in that geographical region. Which of the following is the BEST way to migrate the VM from the original geographic region to the new region?

- A. 1. Create a full backup of the VM.  
2. Copy the backup files into the new region using FTP.  
3. Restore the VM from the backup files.
- B. 1. Create a VM image.  
2. Export the VM image to the new region using vendor's tools.  
3. Deploy a new VM based on the created image.
- C. 1. Create a VM clone.  
2. Copy the clone into the new region using FTP.  
3. Apply the network and security groups from the new region to the cloned VM and start it.
- D. 1. Create a new VM in the new region.  
2. Restore a full-system backup from the original VM.  
3. Apply the network and security groups from the original region to the new VM.

**Correct Answer:** D

**Section:** (none)

**Explanation**

**Explanation/Reference:**

#### QUESTION 67

A Type 1 hypervisor has the following specifications:

RAM	128GB
CPU	4 socket quad-core
Storage	16TB

Each VM must have 8GB RAM, 1 vCPU, and 512GB storage. Which of the following is the MAXIMUM number of VMs that can be hosted on this hypervisor?

- A. 14
- B. 15
- C. 31
- D. 32

**Correct Answer:** A

**Section:** (none)

**Explanation**

**Explanation/Reference:**

**QUESTION 68**

An application server, which uses a SaaS fax provider, is determined to cost too much money. An upgrade to the application allows for use of a physical fax card so the company only has to pay for a phone line. This is a production application; therefore, downtime must be minimized. Which of the following types of migration is MOST efficient in facilitating this application upgrade?

- A. Virtual-to-physical migration
- B. Storage migration
- C. Cloud migration
- D. Offline migration

**Correct Answer: A**

**Section: (none)**

**Explanation**

**Explanation/Reference:**



<https://www.gratisexam.com/>