

CV0-002.exam.45q

Number: CV0-002
Passing Score: 800
Time Limit: 120 min
File Version: 1

Comptia CV0-002



<https://www.gratisexam.com/>

CompTIA Cloud+

<https://www.gratisexam.com/>

Exam A

QUESTION 1

Several SaaS providers support identity federation for authentication. Which of the following would BEST assist in enabling federation?



<https://www.gratisexam.com/>

- A. SAML
- B. NTLM
- C. MFA
- D. PKI

Correct Answer: A

Section: (none)

Explanation

Explanation/Reference:

Reference: <https://aws.amazon.com/blogs/apn/identity-federation-and-sso-for-saas-on-aws/>

QUESTION 2

A company is interested in a DRP. The purpose of the plan is to recover business as soon as possible. The MOST effective technique is:

- A. archiving.
- B. network clustering.
- C. site mirroring.
- D. active/active.

Correct Answer: D

Section: (none)

Explanation

Explanation/Reference:

QUESTION 3

A new SaaS timecard application that is being tested will be used by all employees at a large corporation. The following process was used to test the application:

1. Three users from each site used the application for three weeks.
2. The new application was used side by side with the existing application.
3. The outputs of the old and new applications were compared side by side.

Which of the following requirements did the testing plan confirm? (Select two.)

- A. High availability
- B. Performance
- C. Connectivity
- D. Data integrity
- E. Sizing
- F. Security

Correct Answer: BDE

Section: (none)

Explanation

Explanation/Reference:

QUESTION 4

A cloud engineer is using a hosted service for aggregating the logs for all the servers in a public cloud environment. Each server is configured via syslog to send its logs to a central location. A new version of the application was recently deployed, and the SaaS server now stops processing logs at noon each day. In reviewing the system logs, the engineer notices the size of the logs has increased by 50% each day. Which of the following is the MOST likely reason the logs are not being published after noon?

- A. The logging directory does not have sufficient storage space.
- B. The syslog service is not running on the servers.
- C. The data limit has been exceeded at the SaaS provider.
- D. There is a cloud service provider outage.

Correct Answer: A

Section: (none)

Explanation

Explanation/Reference:

QUESTION 5

A cloud administrator notices one of the servers is using the wrong set of NTP servers. The administrator needs to avoid the same issue in the future but needs to minimize administration resources. Which of the following tools should a cloud administrator deploy to meet this requirement?

- A. Patching tools
- B. Monitoring tools
- C. Configuration tools
- D. Deployment tools

Correct Answer: D

Section: (none)

Explanation

Explanation/Reference:

QUESTION 6

The legal department requires eDiscovery of hosted file shares. To set up access, which of the following is the BEST method to ensure the eDiscovery analyst only has the ability to search but not change configuration or settings?



<https://www.gratisexam.com/>

- A. PKI
- B. SSO
- C. MFA
- D. RBAC

Correct Answer: D

Section: (none)

Explanation

Explanation/Reference:

QUESTION 7

When designing a new private cloud platform, a cloud engineer wants to make sure the new hypervisor can be configured as fast as possible by cloning the OS from the other hypervisor. The engineer does not want to use local drives for the hypervisors. Which of the following storage types would BEST suit the engineer's needs?

- A. CAS
- B. NAS
- C. DAS
- D. SAN

Correct Answer: D

Section: (none)

Explanation

Explanation/Reference:

QUESTION 8

A cloud engineer deployed an email server in a public cloud. Users can access the email server, but the emails they send cannot reach their destinations. Which of the following should the cloud engineer do FIRST?

- A. Confirm the email server configuration and reinstall the email server software.
- B. Validate the security certificate for the email domain.
- C. Confirm email encryption service.
- D. Consult the cloud vendor's anti-spam policy.

Correct Answer: A

Section: (none)

Explanation

Explanation/Reference:

QUESTION 9

A file server is being migrated from physical hardware into a private cloud. Baselineing of the server shows the disks average 90% full at all times. The contents of the file server consist mostly of compressed audio files. Multiple copies of the same files are often saved in different locations on the same disk. Which of the following storage technologies is MOST likely to help minimize storage utilization when moving this server to the private cloud?

- A. Compression

- B. Thin provisioning
- C. Deduplication
- D. Tokenization

Correct Answer: C

Section: (none)

Explanation

Explanation/Reference:

QUESTION 10

A newly established CSP allows for drive shipping to upload new data into the environment. Sensitive data on 40TB of storage needs to be transferred within one week. Which of the following is the MOST efficient and secure method for shipment of the data to the CSP with minimal downtime?



<https://www.gratisexam.com/>

- A. Create a VPN between the sites and schedule data transfer during non-business hours.
- B. Copy the data to encrypted drives and use the CSP-certified shipping provider.
- C. Compress and SFTP the data to the CSP.
- D. Move the data to encrypted drives and use the CSP-certified shipping provider.

Correct Answer: D

Section: (none)

Explanation

Explanation/Reference:

QUESTION 11

A manufacturing company's current security policy mandates PII is not stored in the SaaS solution. Which of the following configuration controls should be used to block sensitive information from being stored in the SaaS solution?

- A. Implement file-level encryption.
- B. Implement a network ACL.

- C. Implement an IPS.
- D. Implement content filtering.

Correct Answer: B

Section: (none)

Explanation

Explanation/Reference:

QUESTION 12

A new application with availability SLA requirements of 99.99% has been deployed in a cloud. For a test spanning a month, which of the following unavailability times would mean the test was successful? (Select TWO).

- A. 1 minute
- B. 4 minutes
- C. 10 minutes
- D. 30 minutes
- E. 60 minutes

Correct Answer: AB

Section: (none)

Explanation

Explanation/Reference:

QUESTION 13

A company's security policy requires full disk encryption on all clients with preboot enabled. The encryption server is hosted, and the requirement is to push an update to all endpoints. Which of the following is the BEST method to test and apply the update with minimal disruption to end users?

- A. Access the API of the encryption server, develop a custom script, and then update all endpoints.
- B. Access the web UI portal of the encryption server, apply the update to the test group, validate, and then update all endpoints.
- C. Add the update to the standard desktop configuration image, apply the update to a test VM, and then reimage clients.
- D. Access the web UI of the encryption server and disable preboot, apply the update, test, and then deploy the update to all endpoints.

Correct Answer: B

Section: (none)

Explanation

Explanation/Reference:

QUESTION 14

A technician receives a report of system utilization:

	Current %	Past 30 days %	Past 60 days %	Past 90 days %
CPU	30	26	45	22
RAM	75	55	45	35
Disk	80	80	80	80
Bandwidth	70	75	80	85

Which of the following additional resources should the technician add FIRST given the trend data shown above?

- A. CPU
- B. Disk
- C. Bandwidth
- D. RAM

Correct Answer: B

Section: (none)

Explanation

Explanation/Reference:

QUESTION 15

A cloud architect is tasked with isolating traffic between subnets in an IaaS platform. The networks should be able to statefully communicate with each other. Given this scenario, which of the following should the architect implement?

- A. Configure security groups.
- B. Configure HIPS policies.
- C. Configure IDS policies.
- D. Configure a network ACL.

Correct Answer: A

Section: (none)

Explanation**Explanation/Reference:****QUESTION 16**

A cloud administrator is provisioning several user accounts that have administrator rights to assets using JSON within an IaaS cloud platform. The administrator is required to configure "alternate" settings using the API. Given this scenario, which of the following elements would allow the administrator to meet these requirements in the JSON file?

- A. Statement
- B. Effect
- C. Resource
- D. Condition

Correct Answer: A

Section: (none)

Explanation**Explanation/Reference:****QUESTION 17**

Before doing a change on a VM, a systems administrator wants to ensure there is an easy and fast way to rollback if needed. The change and testing should take approximately two hours. Which of the following is the EASIEST way to meet this requirement?

- A. Create a snapshot on the hypervisor.
- B. Make an on-demand, incremental backup to a VTL.
- C. Make an on-demand, full backup to a secondary location.
- D. Create a snapshot on a remote storage array.

Correct Answer: A

Section: (none)

Explanation**Explanation/Reference:****QUESTION 18**

The CSA needs to install a patch on 58 virtual server instances during the Friday evening maintenance window. Which of the following is the MOST efficient way to

get the patches installed?

- A. Use the patch management tool to automate and orchestrate the patch installation.
- B. Use a security vulnerability scanning tool to apply the patch automatically.
- C. Schedule the patch to install from a remote file server upon server reboot.
- D. Connect the server instances to the Internet to download the patch automatically.

Correct Answer: A

Section: (none)

Explanation

Explanation/Reference:

QUESTION 19

A recent advertisement campaign has increased traffic to an e-commerce application that is hosted within a public cloud environment. Customers are reporting that it takes too long to load their pages and submit orders. A cloud administrator looks at the metrics from the environment and sees high utilization of the CPU and memory resources. The cloud provider offers several preconfigured sizes for server template: x-small, small, medium, large, x-large, and 2x-large.

Server Name	Role	Server Template Size	Peak CPU Usage	Peak Memory Usage
Inxw001	web	medium	40%	45%
Inxpc002	application	2x-large	85%	90%
Inxpc003	application	x-large	95%	95%
Inxpc004	application	2x-large	85%	85%

Given an expected increase in workload, which of the following is the BEST solution to improve application performance?

- A. Change the server template size for Inxpc003 to 2x-large.
- B. Provision additional Inxpc servers using the 2x-large template.
- C. Add memory to Inxpc002, Inxpc003, and Inxpc003.
- D. Change the role of Inxw001 from web to application.

Correct Answer: A

Section: (none)

Explanation

Explanation/Reference:

QUESTION 20

A company wants to leverage a SaaS provider for its back-office services, and security is paramount. Which of the following solutions should a cloud engineer deploy to BEST meet the security requirements?



<https://www.gratisexam.com/>

- A. Firewall
- B. IPS/IDS
- C. Proxy gateway
- D. CASB

Correct Answer: D

Section: (none)

Explanation

Explanation/Reference:

QUESTION 21

A company upgraded a hosted vulnerability scanner to the latest version, and now tickets are not being created to assign critical vulnerabilities. After confirming the ticketing issue, all the scanning services are confirmed to be running on the VM. Which of the following is the MOST likely cause and best method to fix the issue?

- A. There was an IP change to the VM. Make changes to the server properties.
- B. The upgrade has a bug. Reboot the server and attempt the upgrade again.
- C. The vulnerability scanner is on a different subnet. Open the ports, and it will reconnect.
- D. There is an application compatibility issue. Roll back to the previous working backup.

Correct Answer: D

Section: (none)

Explanation

Explanation/Reference:

QUESTION 22

A system's application servers need to be patched. The requirements for maintenance work are as follows:

- System downtime is not allowed.
- The application server in use must be in the same patch status.
- System performance must be maintained during patching work.
- Testing after patching must be done before the application server is in use.
- If any trouble occurs, recover the previous version in ten minutes.

Which of the following methodologies should be selected?

- A. Rolling update
- B. Patching directly
- C. Blue-green deployment
- D. Three staging environments

Correct Answer: D

Section: (none)

Explanation

Explanation/Reference:

QUESTION 23

A software development company is building cloud-ready applications and needs to determine the best approach for releasing software. Which of the following approaches should be used?

- A. Perform QA, develop, test, and release to production
- B. Test, perform QA, develop, and release to production
- C. Develop, perform QA, test, and release to production
- D. Develop, test, perform QA, and release to production

Correct Answer: D

Section: (none)

Explanation

Explanation/Reference:

QUESTION 24

A customer recently provisioned a new server on the IaaS. The IP address assigned from the pool resolves to another hostname. Some user traffic is being dumped or is causing slowness because of this issue. Which of the following maintenance activities does the provider need to perform to prevent this issue?

- A. Use cloud provider tools to remove orphaned resources.
- B. Initiate resource reclamation.
- C. Run a script to remove stale DNS entries.
- D. Update outdated security firewall configurations.

Correct Answer: C

Section: (none)

Explanation

Explanation/Reference:

QUESTION 25

A development team released a new version of an application and wants to deploy it to the cloud environment with a faster rollback and minimal downtime. Which of the following should the cloud administrator do to achieve this goal?

- A. Use a rolling deployment to update all the servers in the PROD cloud environment with the new application. To switch to the previous version, repeat the process.
- B. Deploy the application to the PROD cloud environment and the previous version to QA. To switch to the previous version, promote the QA environment to PROD.
- C. Deploy the application to a subset of servers in the environment and route traffic to these servers. To switch to the previous version, change the route to the non-updated servers.
- D. Deploy the application to a staging environment and force a failover to this environment. To restore the previous version, create a backup and restore from the previous night's backup.

Correct Answer: A

Section: (none)

Explanation

Explanation/Reference:

QUESTION 26

A university is running a DNA decoding project that will take seven years if it runs on its current internal mainframe. The university negotiated a deal with a large cloud provider, which will donate its cloud resource to process the DNA decoding during the low peak time throughout the world. Which of the following is the MOST important resource the university should ask the cloud provider to donate?

- A. A large storage for the DNA decoding results
- B. A larger pipe to transfer the results
- C. A closer datacenter to the university
- D. Any available compute resource

Correct Answer: C

Section: (none)

Explanation

Explanation/Reference:

QUESTION 27

A business is demanding faster IT services turnaround from its IT groups. The current lead time between request and delivery is three weeks for a task that would take a competitor two days. An architect is asked to develop a solution to reduce the lead time of the request while ensuring adherence to the company policies. Which of the following is the BEST approach to achieve the stated objective?



<https://www.gratisexam.com/>

- A. Document the desired state, complete a root cause analysis, and execute the flow.
- B. Revise the schedule, implement a waterfall methodology, and flatten the network.
- C. Identify deficiencies, optimize change management, and automate the workflow.
- D. Follow the company policies, execute the flow, and document results.

Correct Answer: A

Section: (none)

Explanation

Explanation/Reference:

QUESTION 28

A storage administrator must choose the best replication methodology for storage.

- The datacenters are on opposite sides of the country.
- The RPO is 24 hours.
- Replication and customer access use the same connections.
- Replication should not impact customer access during the day.

Which of the following solutions would BEST meet these requirements?

- A. Asynchronous
- B. Regional
- C. Multiregional
- D. Synchronous

Correct Answer: A

Section: (none)

Explanation

Explanation/Reference:

QUESTION 29

The InfoSec team has directed compliance database activity monitoring without agents on a hosted database server in the public IaaS. Which of the following configurations is needed to ensure this requirement is achieved?

- A. Configure the agent configuration file to log to the syslog server.
- B. Configure sniffing mode on database traffic.
- C. Implement built-in database tracking functionality.
- D. Implement database encryption and secure copy to the NAS.

Correct Answer: B

Section: (none)

Explanation

Explanation/Reference:

QUESTION 30

Ann, a user, has tried to connect to a VM hosted in a private cloud using her directory services credentials. After three attempts, she realizes the keyboard was set to German instead of English, and she was typing "z" instead of "y". After fixing this issue, Ann is still unable to log in; however, other users can access the VM. Which of the following is the MOST likely cause?

- A. The default language on Ann's computer is German.
- B. The account was locked.
- C. Directory services are offline.
- D. There is an account mismatch.
- E. The account localization settings are incorrect.

Correct Answer: E

Section: (none)

Explanation

Explanation/Reference:

QUESTION 31

A company security policy mandates education and training for new employees. The policy must outline acceptable use policies for SaaS applications. Given these requirements, which of the following security controls is BEST suited?

- A. Preventive
- B. Detective
- C. Corrective
- D. Physical

Correct Answer: C

Section: (none)

Explanation

Explanation/Reference:

QUESTION 32

A private cloud customer is considering using the public cloud to accommodate the peak utilization workload. Which of the following would be considered the ideal scaling solution?

- A. Cloud bursting
- B. Load balancing
- C. Horizontal scaling
- D. Vertical scaling

Correct Answer: A

Section: (none)

Explanation

Explanation/Reference:

Reference: <https://searchcloudcomputing.techtarget.com/definition/cloud-bursting>

QUESTION 33

A cloud administrator reports a problem with the maximum number of users reached in one of the pools. There are ten VMs in the pool, each with a software capacity to handle ten users. Based on the dashboard metrics, 15% of the incoming new service requests are failing. Which of the following is the BEST approach to resolve the issue?

- A. Check compute, storage, and networking utilization in the dashboard and increase capacity by adding more resources.
- B. Check current licensed capacity and purchase additional licenses to add more users.
- C. Check the DHCP scope and increase the number of available IP addresses by extending the pool.
- D. Check the rate-of-load increase to determine if the cloud capacity boundary has been exceeded and enable bursting to the public cloud.

Correct Answer: A

Section: (none)

Explanation

Explanation/Reference:

QUESTION 34

In an IaaS environment, the security team issues a new signature file to prevent specific malware threats from infiltrating the company network. Which of the following describes where the security team should deploy the updated signatures?

- A. IDS
- B. Spam filter
- C. WAF
- D. NIPS
- E. HIPS

Correct Answer: C

Section: (none)

Explanation

Explanation/Reference:

QUESTION 35

A small clinic is moving its health and accounting systems to a SaaS solution. The clinic holds patient- and business-sensitive information. Which of the following is the company expected to do to protect its data?



<https://www.gratisexam.com/>

- A. Document, configure, and enforce strong account management policies.
- B. Disable and document unneeded ports and protocols on the SaaS servers.
- C. Install antivirus and disable unneeded services on all SaaS servers.
- D. Harden the underlying infrastructure: servers, firewalls, and load balancers.

Correct Answer: B

Section: (none)

Explanation

Explanation/Reference:

QUESTION 36

A consultant is helping a large company migrate its development environment to a public cloud provider. The developers are working on a VDI solution. The development tools that employees utilize require greater control of the OS environment. Which of the following cloud types should the consultant implement?

- A. SaaS
- B. PaaS
- C. Bare metal service
- D. IaaS

Correct Answer: D

Section: (none)

Explanation

Explanation/Reference:

QUESTION 37

A company changed its policy to have seven-year data retention in the public cloud. Which of the following would be the MOST cost-effective way to meet retention requirements?

- A. Site mirroring
- B. Automated archiving
- C. Replication
- D. Third-party sites

Correct Answer: B

Section: (none)

Explanation

Explanation/Reference:

QUESTION 38

During peak times, users are unable to access their online wealth management applications in a timely fashion. The online banking application resides in a community cloud environment. Which of the following explains how the cloud systems administrator should start to resolve this issue?

- A. Access the cloud services portal and ensure memory ballooning is enabled.
- B. Access the cloud services portal and ensure there is adequate disk space available.
- C. Access the cloud services portal and ensure all users are accessing it through the same web service.
- D. Access the cloud services portal and ensure the ACLs are set correctly for the user community.

Correct Answer: A

Section: (none)

Explanation

Explanation/Reference:

QUESTION 39

A business is planning to migrate from a private cloud to a public cloud. To document business continuity, which of the following should be done FIRST?

- A. Develop a disaster recovery plan with partners/third parties.
- B. Define the set of application-based SLAs.
- C. Identify HA technology to provide failover.

D. Define the scope of requirements.

Correct Answer: B

Section: (none)

Explanation

Explanation/Reference:

QUESTION 40

Joe, a systems administrator, deployed a computer and storage for a system and took it to the application team. The next day, the application team claimed the database was slow. The deployment request, result, and current utilization data are shown below.

	Requested Resource	Deployment Result	Current Utilization
CPU	2 vCPU	2 vCPU	30%
Memory	8GB	8GB	100%
Storage	300GB	300GB	35%

Which of the following descriptions of the situation is correct?

- A. The deployment was done with the wrong memory configuration.
- B. The deployment was unsuccessful due to the cloud failure.
- C. The deployment was successful, but the capacity planning was inaccurate.
- D. The deployment was done with the wrong storage parameter.

Correct Answer: C

Section: (none)

Explanation

Explanation/Reference:

QUESTION 41

A large finance firm processes three times as many transactions in December of each year. The transactions are processed in a private cloud. Management wants to avoid adding permanent resources to accommodate the single month increase. Which of the following is the BEST way to meet the need?

- A. Migrate all transaction processing to a public cloud and size capacity for the largest seasonal needs.
- B. Keep current capacity for processing, but implement cloud bursting to auto scale the resources without having to invest in infrastructure.

- C. Determine usage patterns over time and virtualize the processing traffic to give room for seasonal changes in resource demand.
- D. Determine usage patterns for the seasonal capacity needs and add physical resources to allow additional processing.

Correct Answer: B

Section: (none)

Explanation

Explanation/Reference:

QUESTION 42

A cloud administrator is adding several accounts for new development team interns. These interns will need access to some, but not all, of the resources and will only be working over the summer. Which of the following user provisioning techniques should be used?

- A. Create a single account for the interns to share. Set the expiration date for the account to six months.
- B. Create a role labeled "interns" with the appropriate permissions. Create a separate account with an expiration date for each intern and add each intern to that role.
- C. Create one template user account with the appropriate permissions and use it to clone the other accounts. Set an expiration date for each account individually.
- D. Create individual accounts for each intern, set the permissions and expiration date for each account, and link them to a temporary guests user group.

Correct Answer: C

Section: (none)

Explanation

Explanation/Reference:

QUESTION 43

After deploying new VMs, the systems administrator notices it is not possible to connect to them using network credentials; however, local accounts work. After logging in, the administrator notices the NTP servers are not set. Which of the following is MOST likely causing this issue?

- A. Directory services requires the use of NTP servers.
- B. The VMs are insufficiently licensed.
- C. There is a directory services outage.
- D. There is a time synchronization issue.

Correct Answer: D

Section: (none)

Explanation

Explanation/Reference:

QUESTION 44

A cloud engineer notices on a dashboard that the host is close to reaching maximum capacity for the CPU and memory in the cloud environment, which could cause performance issues. The cloud environment has 100 servers, with 25% of the servers consuming their compute only during peak business hours, 25% consuming half of the allocated resources, and the remaining 50% using the compute during off hours. Which of the following should the engineer perform to optimize the efficiency of the compute usage in the cloud?

- A. Add additional CPUs and RAM to the host that is serving the cloud.
- B. Adjust the cloud workload by migrating resource-intensive applications to different hosts.
- C. Add additional hosts to the environment using the cloud management tool.
- D. Enable automatic scaling in the cloud management tool.

Correct Answer: B

Section: (none)

Explanation

Explanation/Reference:

QUESTION 45

A company has decided to scale its e-commerce application from its corporate datacenter to a commercial cloud provider to meet an anticipated increase in demand during an upcoming holiday. The majority of the application load takes place on the application server under normal conditions. For this reason, the company decides to deploy additional application servers into a commercial cloud provider using the on-premises orchestration engine that installs and configures common software and network configurations. The remote computing environment is connected to the on-premises datacenter via a site-to-site IPSec tunnel. The external DNS provider has been configured to use weighted round-robin routing to load balance connections from the Internet.

During testing, the company discovers that only 20% of connections completed successfully.

Review the network architecture and supporting documents and fulfill these requirements:
Identify the correct options to provide adequate configuration for hybrid cloud architecture.

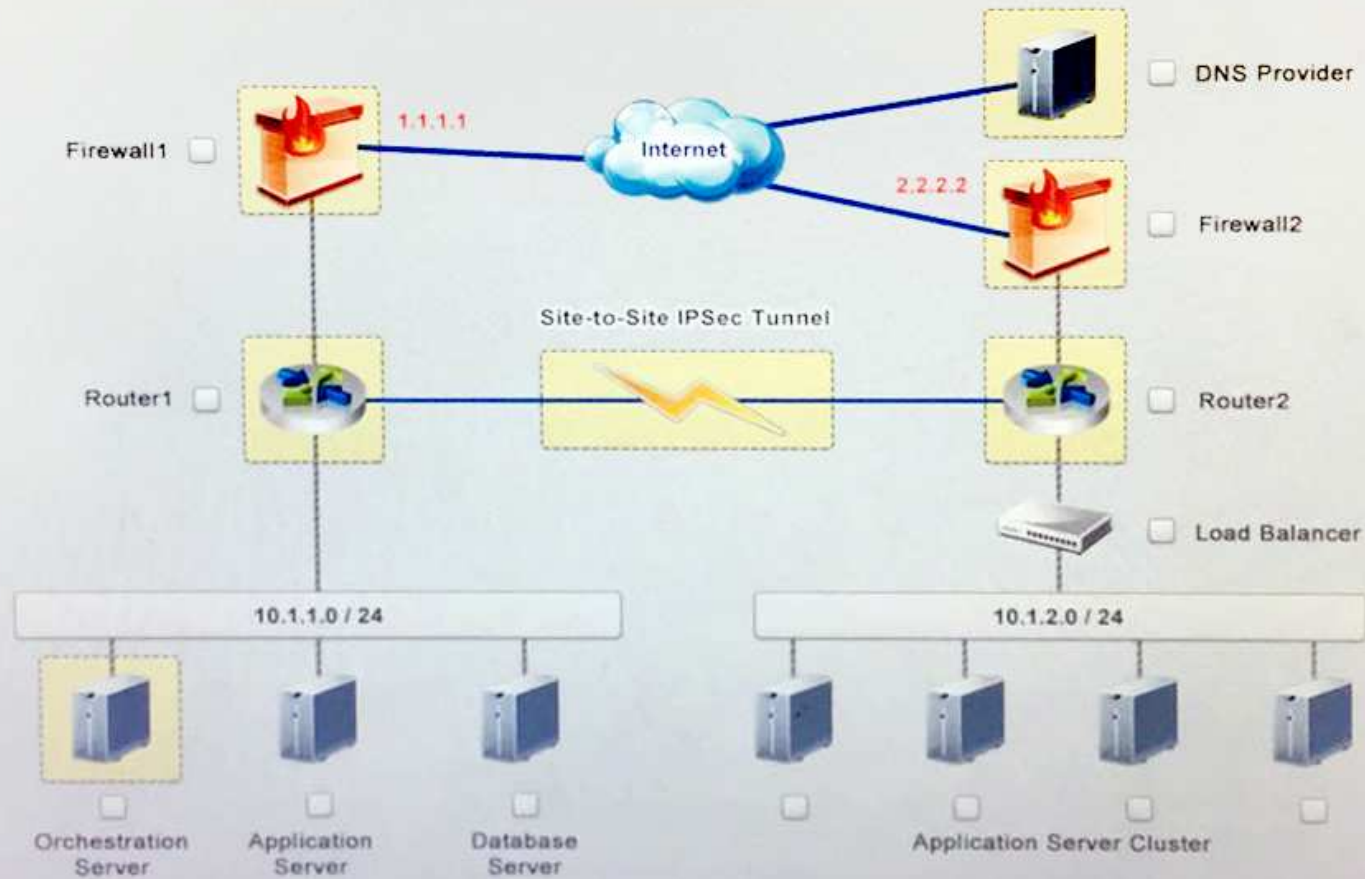
Instructions:

If at any time you would like to bring back the initial state of the simulation, please select the Reset button. When you have completed the simulation, please select the Done button to submit. Once the simulation is submitted, please select the Next button to continue.

Simulation

PART 1

Instruction: Click on each device to review more information of DNS, Firewall1, Firewall2, Router1, Router2, VPN and Orchestration Server.



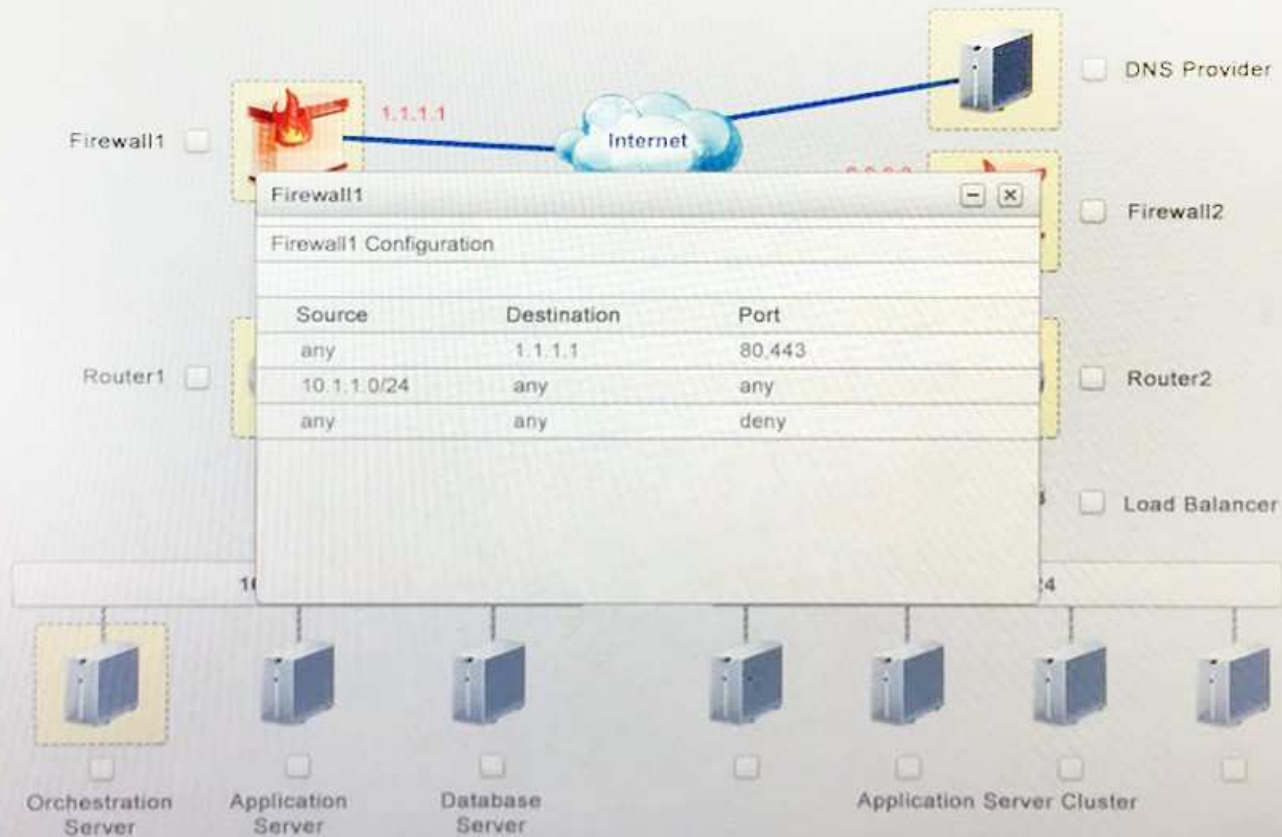
PART 1

PART 2

Clickable items

PART 1

Instruction: Click on each device to review more information of DNS, Firewall1, Firewall2, Router1, Router2, VPN and Orchestration Server.



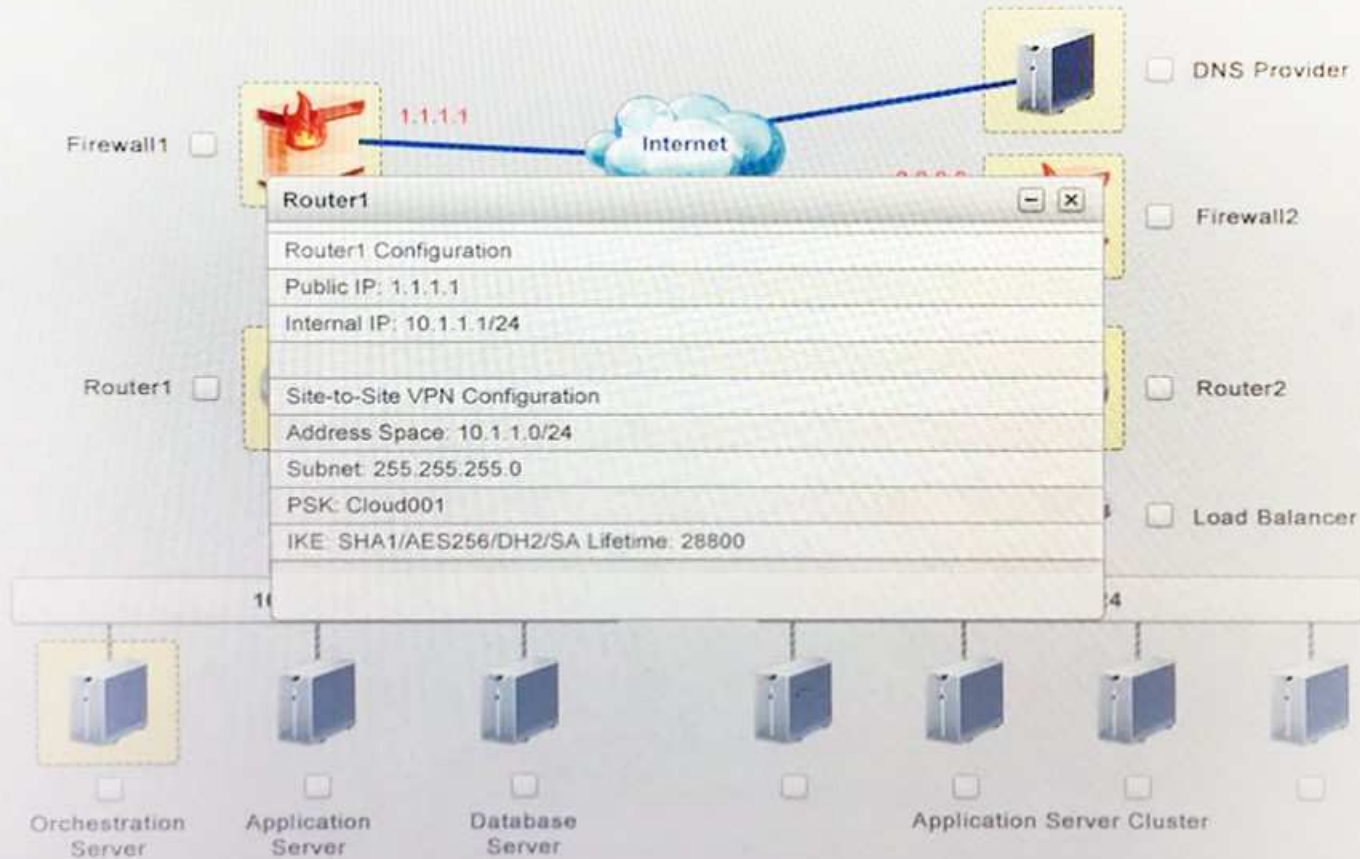
PART 1

PART 2

Clickable items

PART 1

Instruction: Click on each device to review more information of DNS, Firewall1, Firewall2, Router1, Router2, VPN and Orchestration Server.



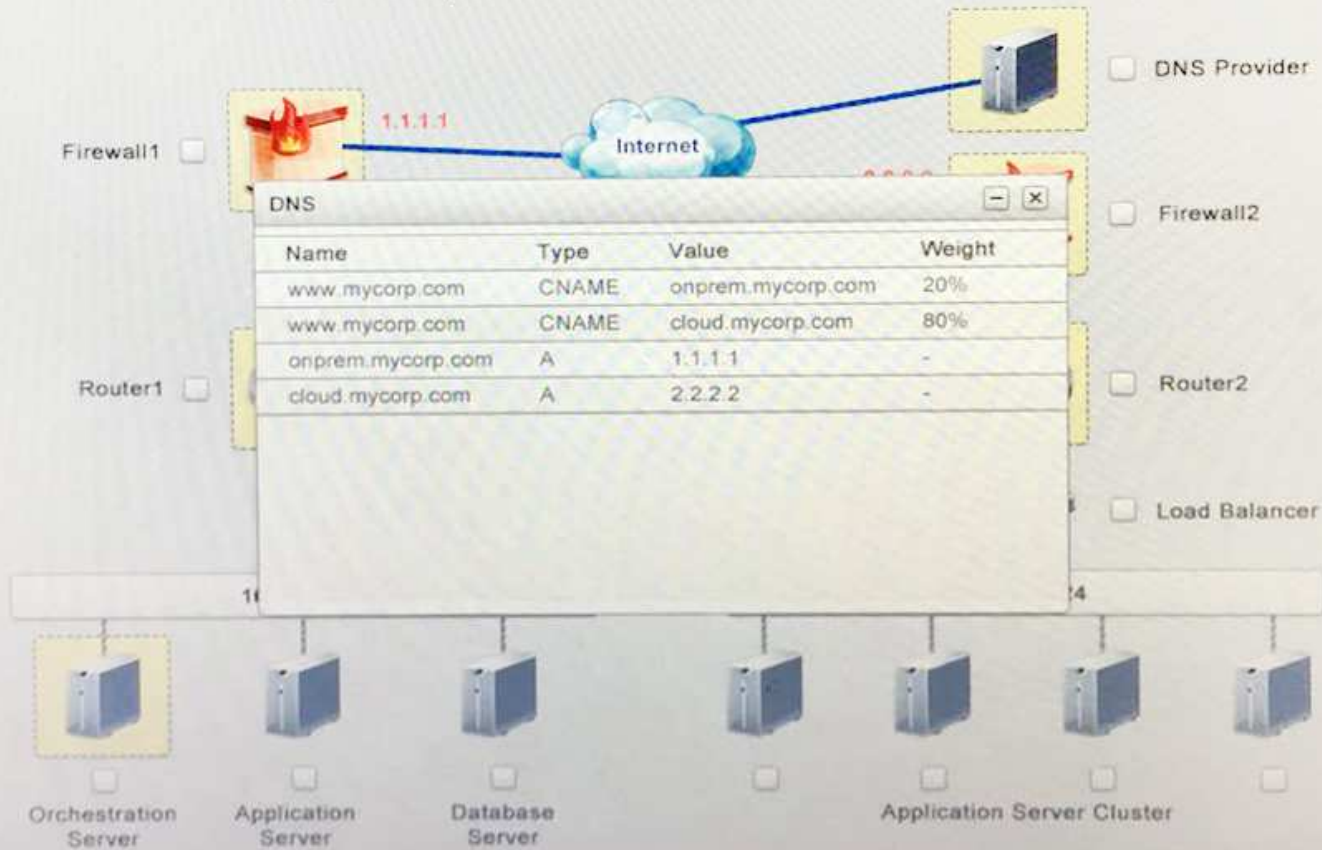
PART 1

PART 2

Clickable items

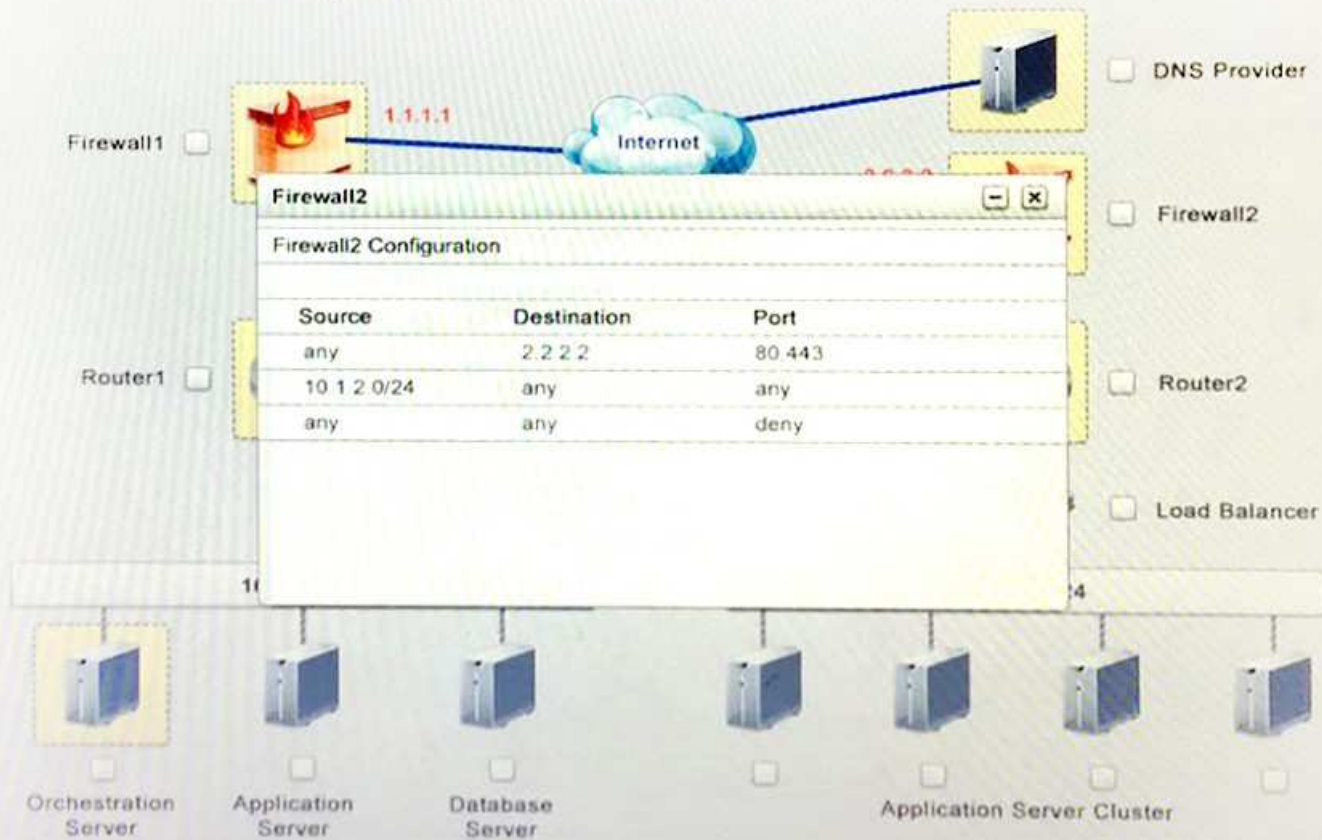
PART 1

Instruction: Click on each device to review more information of DNS, Firewall1, Firewall2, Router1, Router2, VPN and Orchestration Server.



PART 1

Instruction: Click on each device to review more information of DNS, Firewall1, Firewall2, Router1, Router2, VPN and Orchestration Server.



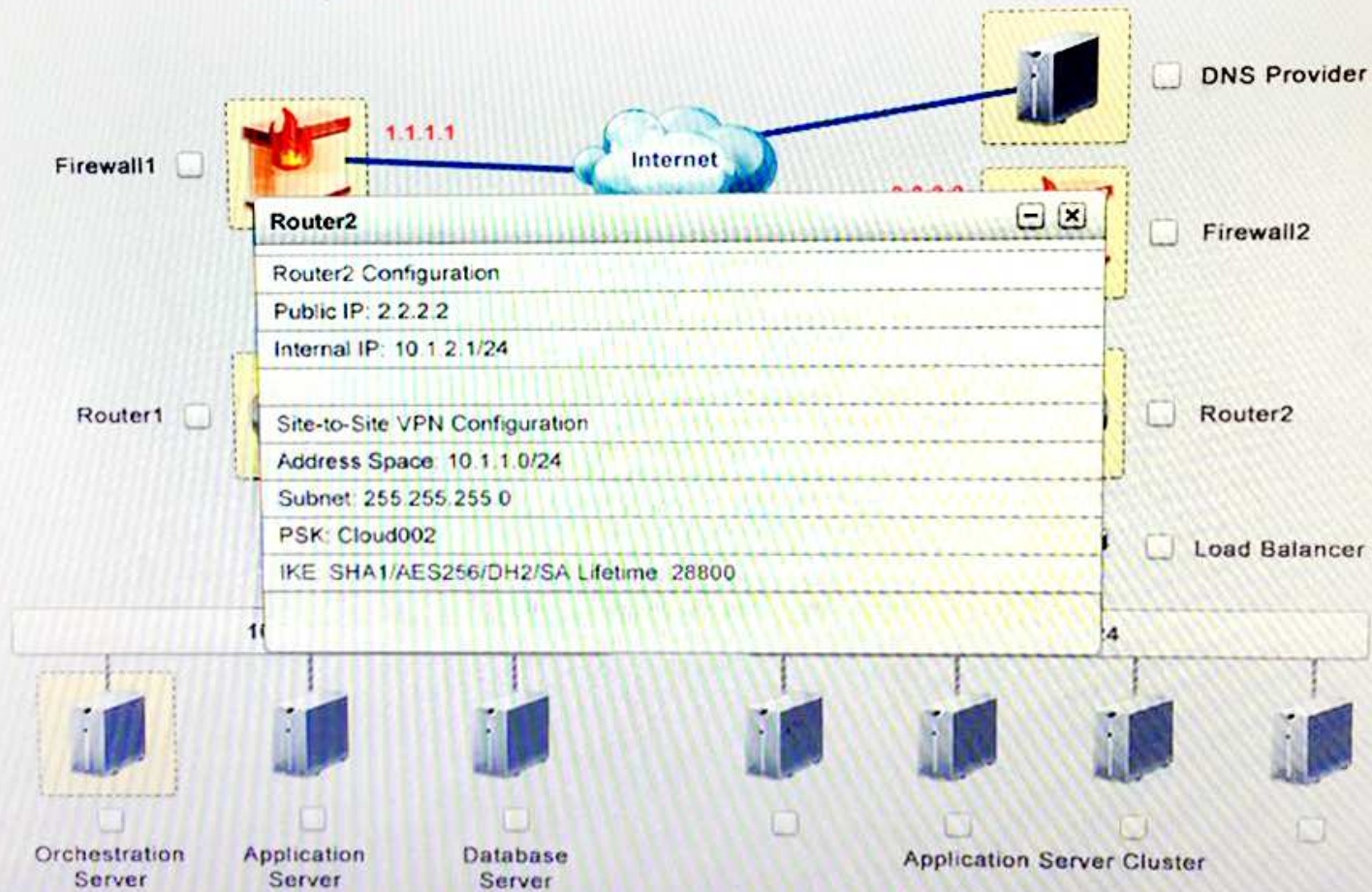
PART 1

PART 2

Clickable items

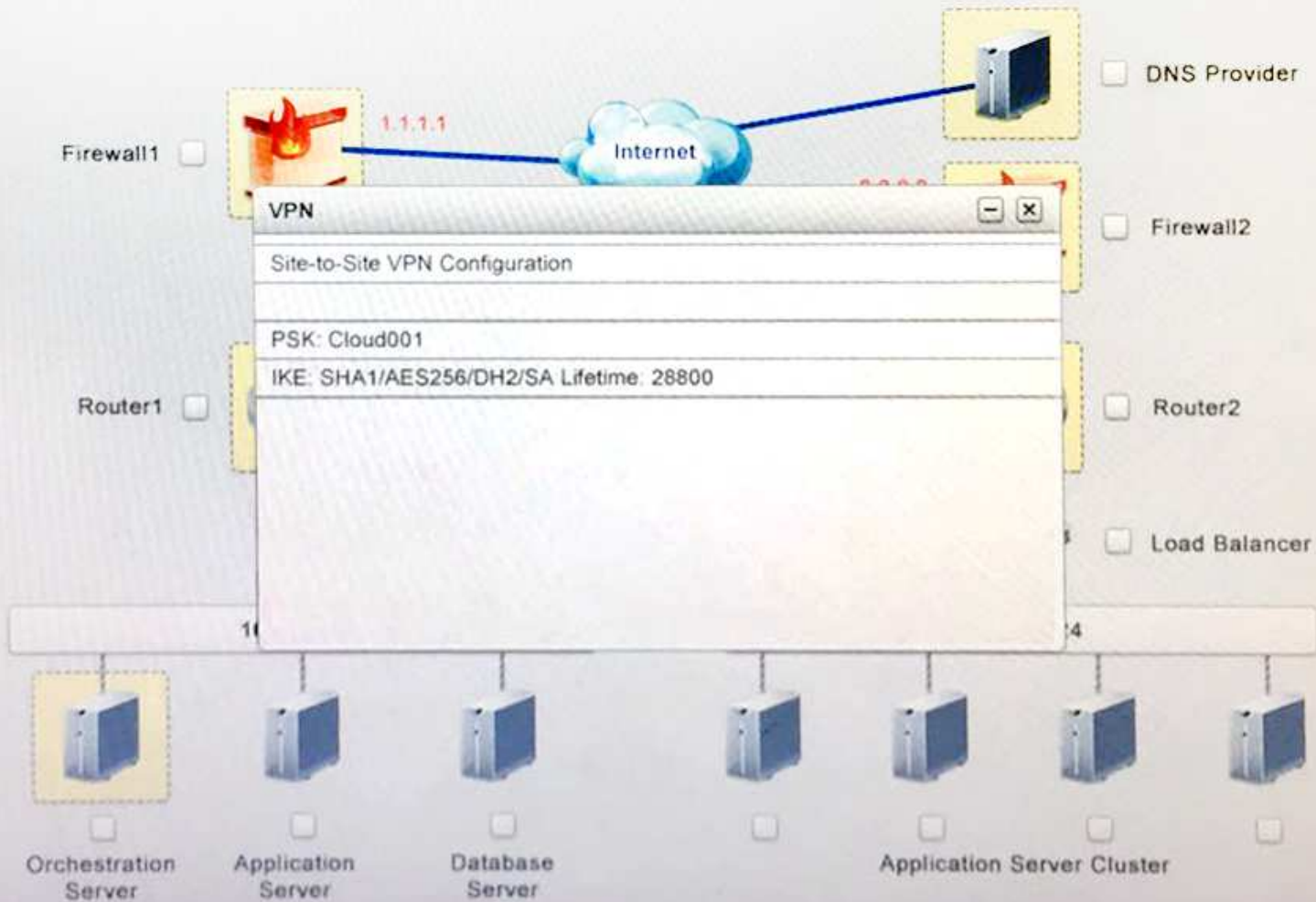
PART 1

Instruction: Click on each device to review more information of DNS, Firewall1, Firewall2, Router1, Router2, VPN and Orchestration Server.



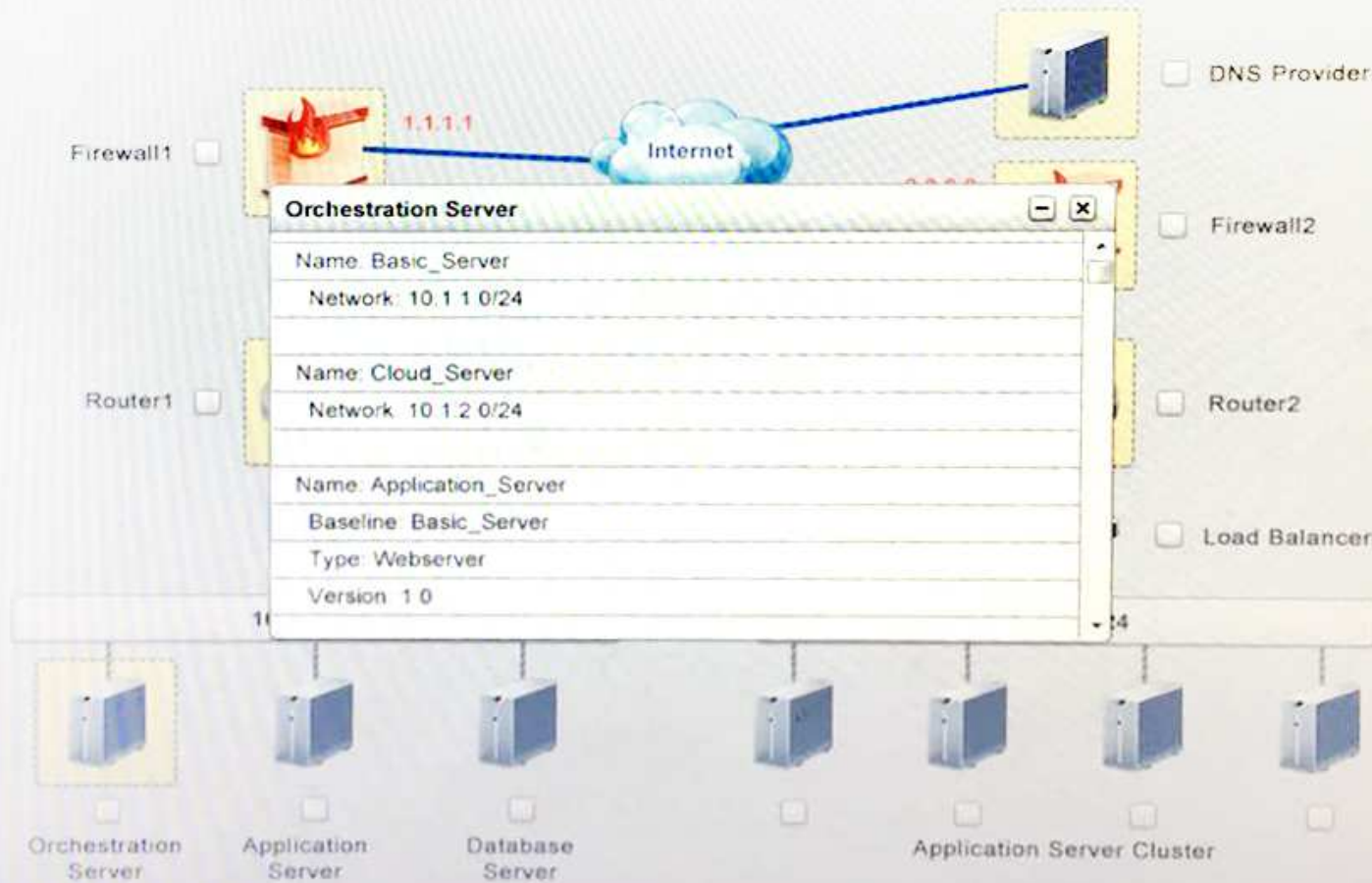
PART 1

Instruction: Click on each device to review more information of DNS, Firewall1, Firewall2, Router1, Router2, VPN and Orchestration Server.



PART 1

Instruction: Click on each device to review more information of DNS, Firewall1, Firewall2, Router1, Router2, VPN and Orchestration Server.

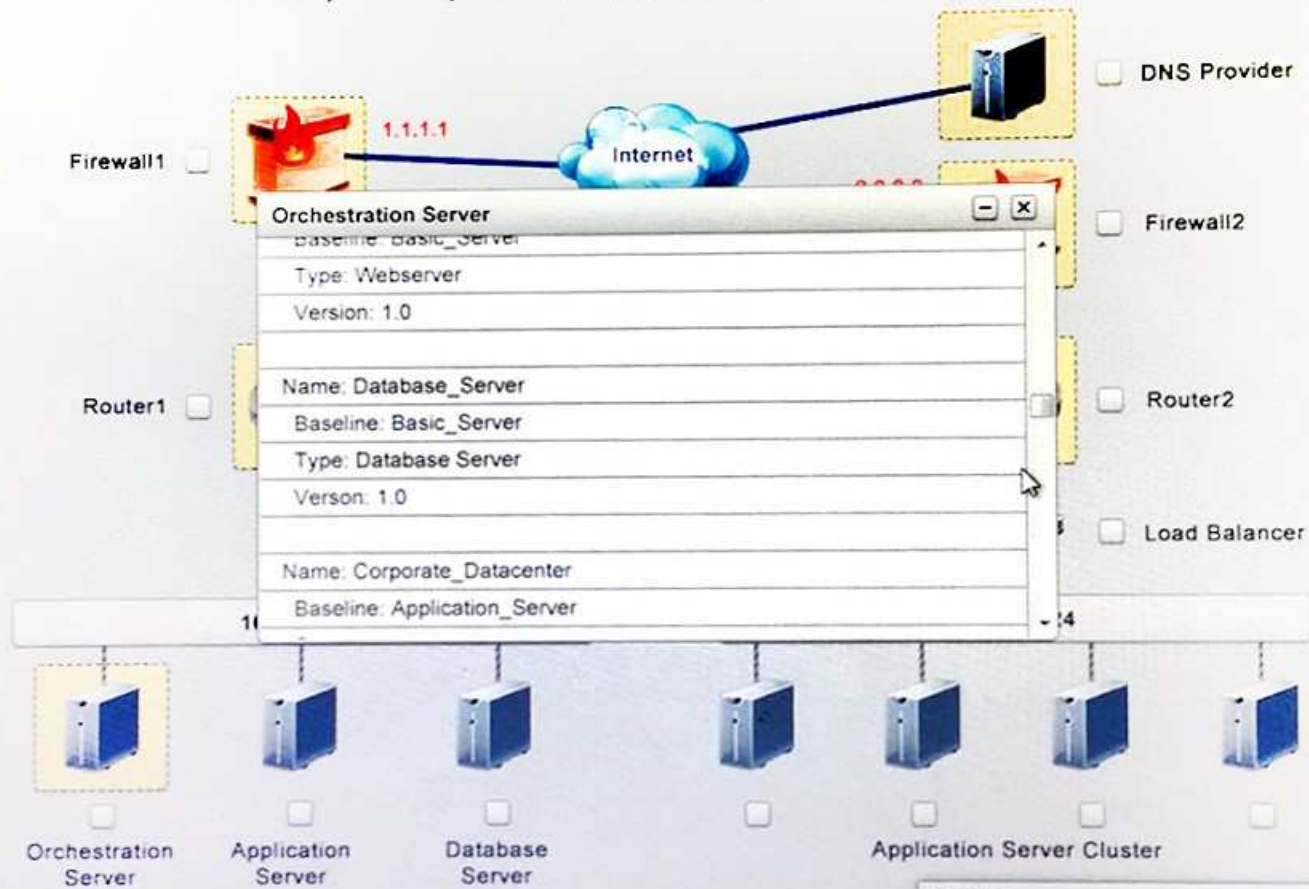


PART 1

PART 2

Clickable items

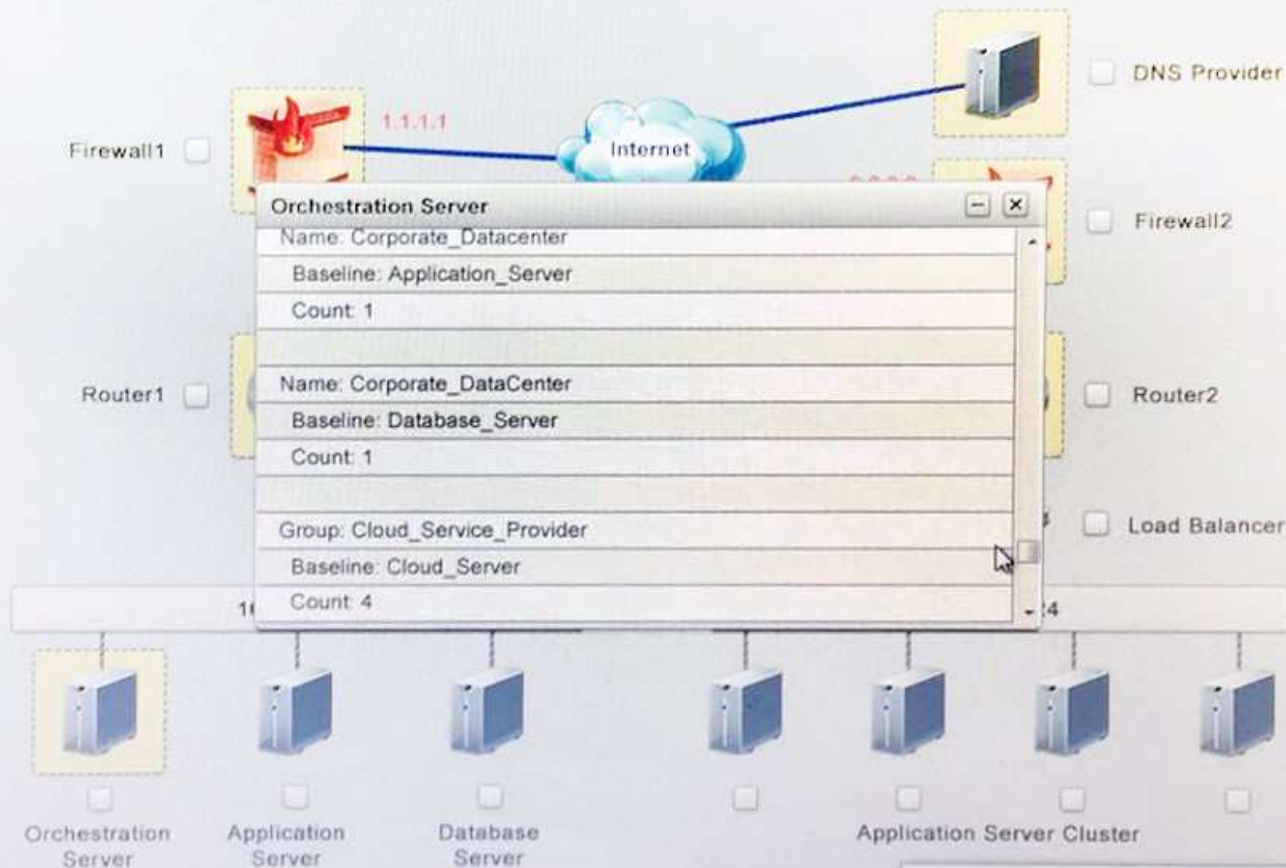
Router1, Router2, VPN and Orchestration Server.



Question

A company has decided to scale its e-commerce application from its corporate datacenter to a commercial

Instruction: Click on each device to review more information of DNS, Firewall1, Firewall2, Router1, Router2, VPN and Orchestration Server.



Instruction: Only select a maximum of TWO options from the multiple choice question.

- A. Deploy a Replica of the Database Server in the Cloud Provider
- B. Update the PSK (Pre-shared key in Router2)

- C. Update the A record on the DNS from 2.2.2.2 to 1.1.1.1
- D. Promote deny All to allow All in Firewall1 and Firewall2
- E. Change the Address Space on Router2
- F. Change internal IP Address of Router1
- G. Reverse the Weight property in the two CNAME records on the DNS
- H. Add the Application Server at on-premises to the Load Balancer

Correct Answer: AH

Section: (none)

Explanation

Explanation/Reference:

