

CV0-002.78q

Number: CV0-002
Passing Score: 800
Time Limit: 120 min

CV0-002



<https://www.gratisexam.com/>

CompTIA Cloud+

<https://www.gratisexam.com/>

Exam A

QUESTION 1

A cloud administrator is provisioning five VMs, each with a minimum of 8GB of RAM and a varying load throughout the day. The hypervisor has only 32GB of RAM. Which of the following features should the administrator use?

- A. Memory overcommitment
- B. Thin-provisioned model
- C. Process scheduling
- D. Hyperthreading

Correct Answer: C

Section: (none)

Explanation

Explanation/Reference:

QUESTION 2

Several SaaS providers support identity federation for authentication. Which of the following would BEST assist in enabling federation?



- A. SAML
- B. NTLM
- C. MFA
- D. PKI

Correct Answer: A

Section: (none)

Explanation

Explanation/Reference:

Reference: <https://aws.amazon.com/blogs/apn/identity-federation-and-sso-for-saas-on-aws/>

QUESTION 3

A company is interested in a DRP. The purpose of the plan is to recover business as soon as possible. The MOST effective technique is:

- A. archiving.
- B. network clustering.
- C. site mirroring.
- D. active/active.

Correct Answer: D

Section: (none)

Explanation

Explanation/Reference:

QUESTION 4

A new SaaS timecard application that is being tested will be used by all employees at a large corporation. The following process was used to test the application:

1. Three users from each site used the application for three weeks.
2. The new application was used side by side with the existing application.
3. The outputs of the old and new applications were compared side by side.

Which of the following requirements did the testing plan confirm? (Select two.)

- A. High availability
- B. Performance
- C. Connectivity
- D. Data integrity
- E. Sizing
- F. Security

Correct Answer: BDE

Section: (none)

Explanation

Explanation/Reference:

QUESTION 5

A cloud engineer is using a hosted service for aggregating the logs for all the servers in a public cloud environment. Each server is configured via syslog to send its logs to a central location. A new version of the application was recently deployed, and the SaaS server now stops processing logs at noon each day. In reviewing the system logs, the engineer notices the size of the logs has increased by 50% each day. Which of the following is the MOST likely reason the logs are not being published after noon?

- A. The logging directory does not have sufficient storage space.
- B. The syslog service is not running on the servers.
- C. The data limit has been exceeded at the SaaS provider.
- D. There is a cloud service provider outage.

Correct Answer: A

Section: (none)

Explanation

Explanation/Reference:

QUESTION 6

A cloud administrator notices one of the servers is using the wrong set of NTP servers. The administrator needs to avoid the same issue in the future but needs to minimize administration resources. Which of the following tools should a cloud administrator deploy to meet this requirement?

- A. Patching tools
- B. Monitoring tools
- C. Configuration tools
- D. Deployment tools

Correct Answer: D

Section: (none)

Explanation

Explanation/Reference:

QUESTION 7

The legal department requires eDiscovery of hosted file shares. To set up access, which of the following is the BEST method to ensure the eDiscovery analyst only has the ability to search but not change configuration or settings?

- A. PKI

- B. SSO
- C. MFA
- D. RBAC

Correct Answer: D

Section: (none)

Explanation

Explanation/Reference:

QUESTION 8

When designing a new private cloud platform, a cloud engineer wants to make sure the new hypervisor can be configured as fast as possible by cloning the OS from the other hypervisor. The engineer does not want to use local drives for the hypervisors. Which of the following storage types would BEST suit the engineer's needs?

- A. CAS
- B. NAS
- C. DAS
- D. SAN

Correct Answer: D

Section: (none)

Explanation

Explanation/Reference:

QUESTION 9

A cloud engineer deployed an email server in a public cloud. Users can access the email server, but the emails they send cannot reach their destinations. Which of the following should the cloud engineer do FIRST?

- A. Confirm the email server configuration and reinstall the email server software.
- B. Validate the security certificate for the email domain.
- C. Confirm email encryption service.
- D. Consult the cloud vendor's anti-spam policy.

Correct Answer: A

Section: (none)

Explanation

Explanation/Reference:

QUESTION 10

A file server is being migrated from physical hardware into a private cloud. Baselining of the server shows the disks average 90% full at all times. The contents of the file server consist mostly of compressed audio files. Multiple copies of the same files are often saved in different locations on the same disk. Which of the following storage technologies is MOST likely to help minimize storage utilization when moving this server to the private cloud?

- A. Compression
- B. Thin provisioning
- C. Deduplication
- D. Tokenization

Correct Answer: C

Section: (none)

Explanation

Explanation/Reference:

QUESTION 11

A cloud administrator is looking at business requirements that specify the data available at the disaster recovery site must not be more than 24 hours old. Which of the following metrics correctly relates to these requirements?

- A. RTO
- B. MTBF
- C. MTTR
- D. RPO

Correct Answer: D

Section: (none)

Explanation

Explanation/Reference:

QUESTION 12

A cloud implementation engineer successfully created a new VM. However, the engineer notices the new VM is not accessible from another network. A ping test

works from another VM on the same subnet. Which of the following is the MOST likely problem?

- A. Incorrect subnet
- B. Incorrect host IP address
- C. Incorrect VLAN
- D. Incorrect gateway

Correct Answer: A

Section: (none)

Explanation

Explanation/Reference:

QUESTION 13

A customer wants a cloud systems administrator to adjust the backup schedule after month-end to ensure the data can be restored as fast as possible while minimizing the time needed to perform the backup. Which of the following backup types should be scheduled?

- A. Synthetic full
- B. Incremental
- C. Differential
- D. Full

Correct Answer: A

Section: (none)

Explanation

Explanation/Reference:

QUESTION 14

A cloud administrator uses a script to automatically restart all the servers running in the public cloud provider environment, which hosts e-commerce applications. The administrator decides to implement the same script for a similar environment that hosts the finance applications. After verifying the script is deployed to the public cloud environment for finance, the administrator schedules a job to run at 9:00 a.m. After 9:00 a.m., the administrator receives a report from the e-commerce team that the application is experiencing outages. Which of the following should the administrator do to resolve the issue?

- A. Update the version of the CLI tool for the public cloud provider.
- B. Copy the script up to a bastion host in the environment and run it from there.
- C. Validate the access credentials for the cloud provider are correct.

D. Debug the script and modify it to remove the flawed logic.

Correct Answer: C

Section: (none)

Explanation

Explanation/Reference:

QUESTION 15

A critical new security update has been released to fix an identified zero-day vulnerability with the SSH server process. Due to its severity, all development and staging servers must have this update applied immediately. Which of the following is the FASTEST way for the administrator to apply the patch and ensure all systems are configured consistently?

- A. Shut down all servers and use the server provisioning tools to deploy new ones that have the latest patch applied.
- B. Create a master inventory list of servers that must be patched. Log in to each server and deploy the patch, making sure to check off each server on the list.
- C. Use the existing tooling to clone the existing servers. Update each clone with the latest patch and shut down the original system.
- D. Update the set of configuration management scripts to include the latest patch. Execute these scripts against a master inventory of servers.

Correct Answer: D

Section: (none)

Explanation

Explanation/Reference:

QUESTION 16

A company wants to take advantage of cloud benefits while retaining control of and maintaining compliance with all its security policy obligations. Based on the non-functional requirements, which of the following should the company use?

- A. Hybrid cloud, as use is restricted to trusted customers
- B. IaaS, as the cloud provider has a minimal level of security responsibility
- C. PaaS, as the cloud customer has the most security responsibility
- D. SaaS, as the cloud provider has less security responsibility

Correct Answer: B

Section: (none)

Explanation

Explanation/Reference:

QUESTION 17

An administrator is deploying a new application platform with the following resource utilization:

Resource	Total Capacity	Current Usage
DISK	1.5TB	1300GB
IOPS	5000	3000
CPU	12GHz	8.5GHz
Network	10Gbps	3Gbps
RAM	256GB	90GB

Company policy requires that no resource utilization surpasses 80%. Which of the following resources will need to be upgraded prior to deployment?

- A. Disk
- B. IOPS
- C. CPU
- D. Network
- E. RAM

Correct Answer: A

Section: (none)

Explanation

Explanation/Reference:

QUESTION 18

Several suspicious emails are being reported from end users. Organizational email is hosted by a SaaS provider. Upon investigation, the URL in the email links to a phishing site where users are prompted to enter their domain credentials to reset their passwords. Which of the following should the cloud administrator do to protect potential account compromise?

- A. Forward the email to the systems team distribution list and provide the compromised user list.
- B. Click on the URL link to verify the website and enter false domain credentials.
- C. Change the encryption key for the entire organization and lock out all users from using email until the issue is remediated.
- D. Notify users who received the email to reset their passwords regardless of whether they click on the URL.

Correct Answer: C

Section: (none)

Explanation

Explanation/Reference:

QUESTION 19

Which of the following is the BEST way to ensure accounts in a cloud environment are disabled as soon as they no longer need to be active?

- A. Have the user contact the cloud systems administrator to disable the account when it is no longer needed.
- B. When users leave the company, ensure an account disablement request is initiated and will be fulfilled in less than four hours.
- C. Have accounts checked by the cloud systems administrator once per day to ensure active accounts are still valid.
- D. Reboot directory services servers once a day to ensure all account disablement requests are committed.

Correct Answer: A

Section: (none)

Explanation

Explanation/Reference:

QUESTION 20

A cloud administrator has deployed a new all-flash storage array with deduplication and compression enabled, and moved some of the VMs into it. The goal was to achieve 4:1 storage efficiency while maintaining sub-millisecond latency. Which of the following results would BEST suit the requirements?

- A. Compression 1:1
Deduplication 4:1
Overall savings 4:1
Average latency 1.0ms
- B. Compression 1.5:1
Deduplication 1.8:1
Overall savings 2.2:1
Average latency 600us
- C. Compression 1.3:1
Deduplication 3.1:1
Overall savings 4.3:1
Average latency 900us
- D. Compression 1.8:1
Deduplication 2.7:1

Overall savings 4.2:1
Average latency 1.2ms

Correct Answer: D

Section: (none)

Explanation

Explanation/Reference:

QUESTION 21

A newly established CSP allows for drive shipping to upload new data into the environment. Sensitive data on 40TB of storage needs to be transferred within one week. Which of the following is the MOST efficient and secure method for shipment of the data to the CSP with minimal downtime?

- A. Create a VPN between the sites and schedule data transfer during non-business hours.
- B. Copy the data to encrypted drives and use the CSP-certified shipping provider.
- C. Compress and SFTP the data to the CSP.
- D. Move the data to encrypted drives and use the CSP-certified shipping provider.

Correct Answer: D

Section: (none)

Explanation

Explanation/Reference:

QUESTION 22

A manufacturing company's current security policy mandates PII is not stored in the SaaS solution. Which of the following configuration controls should be used to block sensitive information from being stored in the SaaS solution?

- A. Implement file-level encryption.
- B. Implement a network ACL.
- C. Implement an IPS.
- D. Implement content filtering.

Correct Answer: B

Section: (none)

Explanation

Explanation/Reference:

QUESTION 23

A new application with availability SLA requirements of 99.99% has been deployed in a cloud. For a test spanning a month, which of the following unavailability times would mean the test was successful? (Select TWO).

- A. 1 minute
- B. 4 minutes
- C. 10 minutes
- D. 30 minutes
- E. 60 minutes

Correct Answer: AB

Section: (none)

Explanation

Explanation/Reference:

QUESTION 24

A company upgraded a hosted vulnerability scanner to the latest version, and now tickets are not being created to assign critical vulnerabilities. After confirming the ticketing issue, all the scanning services are confirmed to be running on the VM. Which of the following is the MOST likely cause and best method to fix the issue?

- A. There was an IP change to the VM. Make changes to the server properties.
- B. The upgrade has a bug Reboot the server and attempt the upgrade again.
- C. The vulnerability scanner is on a different subnet. Open the ports, and it will reconnect.
- D. There is an application compatibility issue. Roll back to the previous working backup.

Correct Answer: D

Section: (none)

Explanation

Explanation/Reference:

QUESTION 25

A system's application servers need to be patched. The requirements for maintenance work are as follows:

- System downtime is not allowed.
- The application server in use must be in the same patch status.
- System performance must be maintained during patching work.
- Testing after patching must be done before the application server is in use.
- If any trouble occurs, recover the previous version in ten minutes.

Which of the following methodologies should be selected?

- A. Rolling update
- B. Patching directly
- C. Blue-green deployment
- D. Three staging environments

Correct Answer: D

Section: (none)

Explanation

Explanation/Reference:

QUESTION 26

A software development company is building cloud-ready applications and needs to determine the best approach for releasing software. Which of the following approaches should be used?



<https://www.gratisexam.com/>

- A. Perform QA, develop, test, and release to production
- B. Test, perform QA, develop, and release to production
- C. Develop, perform QA, test, and release to production
- D. Develop, test, perform QA, and release to production

Correct Answer: D

Section: (none)

Explanation

Explanation/Reference:

QUESTION 27

A customer recently provisioned a new server on the IaaS. The IP address assigned from the pool resolves to another hostname. Some user traffic is being dumped or is causing slowness because of this issue. Which of the following maintenance activities does the provider need to perform to prevent this issue?

- A. Use cloud provider tools to remove orphaned resources.
- B. Initiate resource reclamation.
- C. Run a script to remove stale DNS entries.
- D. Update outdated security firewall configurations.

Correct Answer: C

Section: (none)

Explanation

Explanation/Reference:

QUESTION 28

A development team released a new version of an application and wants to deploy it to the cloud environment with a faster rollback and minimal downtime. Which of the following should the cloud administrator do to achieve this goal?

- A. Use a rolling deployment to update all the servers in the PROD cloud environment with the new application. To switch to the previous version, repeat the process.
- B. Deploy the application to the PROD cloud environment and the previous version to QA. To switch to the previous version, promote the QA environment to PROD.
- C. Deploy the application to a subset of servers in the environment and route traffic to these servers. To switch to the previous version, change the route to the non-updated servers.
- D. Deploy the application to a staging environment and force a failover to this environment. To restore the previous version, create a backup and restore from the previous night's backup.

Correct Answer: A

Section: (none)

Explanation

Explanation/Reference:

QUESTION 29

A university is running a DNA decoding project that will take seven years if it runs on its current internal mainframe. The university negotiated a deal with a large cloud provider, which will donate its cloud resource to process the DNA decoding during the low peak time throughout the world. Which of the following is the MOST important resource the university should ask the cloud provider to donate?

- A. A large storage for the DNA decoding results
- B. A larger pipe to transfer the results
- C. A closer datacenter to the university
- D. Any available compute resource

Correct Answer: C

Section: (none)

Explanation

Explanation/Reference:

QUESTION 30

A business is demanding faster IT services turnaround from its IT groups. The current lead time between request and delivery is three weeks for a task that would take a competitor two days. An architect is asked to develop a solution to reduce the lead time of the request while ensuring adherence to the company policies. Which of the following is the BEST approach to achieve the stated objective?

- A. Document the desired state, complete a root cause analysis, and execute the flow.
- B. Revise the schedule, implement a waterfall methodology, and flatten the network.
- C. Identify deficiencies, optimize change management, and automate the workflow.
- D. Follow the company policies, execute the flow, and document results.

Correct Answer: A

Section: (none)

Explanation

Explanation/Reference:

QUESTION 31

A storage administrator must choose the best replication methodology for storage.

- The datacenters are on opposite sides of the country.
- The RPO is 24 hours.
- Replication and customer access use the same connections.
- Replication should not impact customer access during the day.

Which of the following solutions would BEST meet these requirements?

- A. Asynchronous
- B. Regional
- C. Multiregional
- D. Synchronous

Correct Answer: A

Section: (none)

Explanation

Explanation/Reference:

QUESTION 32

The InfoSec team has directed compliance database activity monitoring without agents on a hosted database server in the public IaaS. Which of the following configurations is needed to ensure this requirement is achieved?

- A. Configure the agent configuration file to log to the syslog server.
- B. Configure sniffing mode on database traffic.
- C. Implement built-in database tracking functionality.
- D. Implement database encryption and secure copy to the NAS.

Correct Answer: B

Section: (none)

Explanation

Explanation/Reference:

QUESTION 33

Ann, a user, has tried to connect to a VM hosted in a private cloud using her directory services credentials. After three attempts, she realizes the keyboard was set to German instead of English, and she was typing "z" instead of "y". After fixing this issue, Ann is still unable to log in; however, other users can access the VM. Which of the following is the MOST likely cause?

- A. The default language on Ann's computer is German.
- B. The account was locked.
- C. Directory services are offline.

- D. There is an account mismatch.
- E. The account localization settings are incorrect.

Correct Answer: E

Section: (none)

Explanation

Explanation/Reference:

QUESTION 34

A cloud administrator is integrating account logins with Facebook, LinkedIn, and Twitter for marketing and to increase market presence using social media platforms. Given this scenario, which of the following components are needed to match these requirements? (Select TWO).

- A. SOAP
- B. SAML assertion
- C. Security token
- D. Identity provider
- E. Session state

Correct Answer: BE

Section: (none)

Explanation

Explanation/Reference:

QUESTION 35

A company uses its own private cloud, which has few available resources. Mission-critical systems and other information systems are running on it. A new system will be deployed on the private cloud. The following tests are included in the test plan:

- Load test (2h)
- Backup/restore test (6h)
- Functional test (8h)
- Failover test (1h)

The work schedule of the existing system is shown below.

	System open	System close	Batch job
ERP (mission critical)	9:00	22:00	22:00-00:00
Groupware	24h active		no batch
Internal web	24h active		06:00-08:00
Official website	24h active		00:00-00:30

To minimize the effect to the existing system, which of the following schedules is MOST suitable for the load test?

- A. 02:00-04:00
- B. 09:00-12:00
- C. 18:00-20:00
- D. 22:00-00:00

Correct Answer: C

Section: (none)

Explanation

Explanation/Reference:

QUESTION 36

A cloud administrator is required to implement a solution to handle data-at-rest encryption requirements for a database. Which of the following would BEST satisfy the requirements?

- A. Install an SSL certificate and only allow secure connections to the server.
- B. Enable two-factor authentication on connections to the database server and log activities.
- C. Activate memory encryption on the virtual server and store the certificates remotely.
- D. Create a virtual encrypted disk, add it to the virtual server, and have the database write to it.

Correct Answer: D

Section: (none)

Explanation

Explanation/Reference:

Explanation:

The question talks about data at rest. The only option given that offers a solution for data at rest is to encrypt the disk that the database writes to.

QUESTION 37

A cloud administrator is tasked with ensuring redundancy and high availability of an IaaS cloud platform environment. The administrator is given the following requirements:

- Two web servers must share the same configurations and service client connections evenly.
- Two database servers must share data and configurations, with only one being used at a time.

Given the above, which of the following should the administrator propose to BEST meet these requirements? (Select TWO).

- A. The web server should be configured with a round-robin DNS with a CNAME record.
- B. The web server should be configured with a load balancer with a virtual IP address.
- C. The database server should be configured as an active-active cluster.
- D. The database server should be configured as an active-passive cluster.
- E. The availability aspect of the request does not currently exist in the IaaS cloud platform.
- F. The redundancy aspect of the request does not currently exist in the IaaS cloud platform.

Correct Answer: AD

Section: (none)

Explanation

Explanation/Reference:

QUESTION 38

In an IaaS model, to which of the following methodologies would the client apply a list of OS patches, assuming approval from CAB has been given?

- A. Using a patch management system, identify the hypervisor type, select a group of hypervisors to be patched, and perform a rolling application of patches.
- B. Using a patch management system, identify the guests that require patching, and select and apply the patches.
- C. Using a patch management system, identify the applications needing the patch, select the required application in a patch management console, and apply the patches.
- D. Using a patch management system, identify the services that require patching, and select and apply the patches.

Correct Answer: A

Section: (none)

Explanation

Explanation/Reference:

QUESTION 39

A cloud administrator has finished building a virtual server template in a public cloud environment. The administrator is now cloning six servers from that template. Each server is configured with one private IP address and one public IP address. After starting the server instances, the cloud administrator notices that two of the servers do not have a public IP address. Which of the following is the MOST likely cause?

- A. The maximum number of public IP addresses has already been reached.
- B. The two servers are not attached to the correct public subnet.
- C. There is no Internet gateway configured in the cloud environment.
- D. The two servers do not have enough virtual network adapters attached.

Correct Answer: D

Section: (none)

Explanation

Explanation/Reference:

QUESTION 40

During peak times, users are unable to access their online wealth management applications in a timely fashion. The online banking application resides in a community cloud environment. Which of the following explains how the cloud systems administrator should start to resolve this issue?

- A. Access the cloud services portal and ensure memory ballooning is enabled.
- B. Access the cloud services portal and ensure there is adequate disk space available.
- C. Access the cloud services portal and ensure all users are accessing it through the same web service.
- D. Access the cloud services portal and ensure the ACLs are set correctly for the user community.

Correct Answer: A

Section: (none)

Explanation

Explanation/Reference:

QUESTION 41

A business is planning to migrate from a private cloud to a public cloud. To document business continuity, which of the following should be done FIRST?

- A. Develop a disaster recovery plan with partners/third parties.
- B. Define the set of application-based SLAs.
- C. Identify HA technology to provide failover.

D. Define the scope of requirements.

Correct Answer: B

Section: (none)

Explanation

Explanation/Reference:

QUESTION 42

Joe, a systems administrator, deployed a computer and storage for a system and took it to the application team. The next day, the application team claimed the database was slow. The deployment request, result, and current utilization data are shown below.

	Requested Resource	Deployment Result	Current Utilization
CPU	2 vCPU	2 vCPU	30%
Memory	8GB	8GB	100%
Storage	300GB	300GB	35%

Which of the following descriptions of the situation is correct?

- A. The deployment was done with the wrong memory configuration.
- B. The deployment was unsuccessful due to the cloud failure.
- C. The deployment was successful, but the capacity planning was inaccurate.
- D. The deployment was done with the wrong storage parameter.

Correct Answer: C

Section: (none)

Explanation

Explanation/Reference:

QUESTION 43

A large finance firm processes three times as many transactions in December of each year. The transactions are processed in a private cloud. Management wants to avoid adding permanent resources to accommodate the single month increase. Which of the following is the BEST way to meet the need?

- A. Migrate all transaction processing to a public cloud and size capacity for the largest seasonal needs.
- B. Keep current capacity for processing, but implement cloud bursting to auto scale the resources without having to invest in infrastructure.

- C. Determine usage patterns over time and virtualize the processing traffic to give room for seasonal changes in resource demand.
- D. Determine usage patterns for the seasonal capacity needs and add physical resources to allow additional processing.

Correct Answer: B

Section: (none)

Explanation

Explanation/Reference:

QUESTION 44

A cloud administrator is adding several accounts for new development team interns. These interns will need access to some, but not all, of the resources and will only be working over the summer. Which of the following user provisioning techniques should be used?

- A. Create a single account for the interns to share. Set the expiration date for the account to six months.
- B. Create a role labeled "interns" with the appropriate permissions. Create a separate account with an expiration date for each intern and add each intern to that role.
- C. Create one template user account with the appropriate permissions and use it to clone the other accounts. Set an expiration date for each account individually.
- D. Create individual accounts for each intern, set the permissions and expiration date for each account, and link them to a temporary guests user group.

Correct Answer: C

Section: (none)

Explanation

Explanation/Reference:

QUESTION 45

After deploying new VMs, the systems administrator notices it is not possible to connect to them using network credentials; however, local accounts work. After logging in, the administrator notices the NTP servers are not set. Which of the following is MOST likely causing this issue?

- A. Directory services requires the use of NTP servers.
- B. The VMs are insufficiently licensed.
- C. There is a directory services outage.
- D. There is a time synchronization issue.

Correct Answer: D

Section: (none)

Explanation

Explanation/Reference:

QUESTION 46

A cloud engineer notices on a dashboard that the host is close to reaching maximum capacity for the CPU and memory in the cloud environment, which could cause performance issues. The cloud environment has 100 servers, with 25% of the servers consuming their compute only during peak business hours, 25% consuming half of the allocated resources, and the remaining 50% using the compute during off hours. Which of the following should the engineer perform to optimize the efficiency of the compute usage in the cloud?

- A. Add additional CPUs and RAM to the host that is serving the cloud.
- B. Adjust the cloud workload by migrating resource-intensive applications to different hosts.
- C. Add additional hosts to the environment using the cloud management tool.
- D. Enable automatic scaling in the cloud management tool.

Correct Answer: B

Section: (none)

Explanation

Explanation/Reference:

QUESTION 47

A company has decided to scale its e-commerce application from its corporate datacenter to a commercial cloud provider to meet an anticipated increase in demand during an upcoming holiday. The majority of the application load takes place on the application server under normal conditions. For this reason, the company decides to deploy additional application servers into a commercial cloud provider using the on-premises orchestration engine that installs and configures common software and network configurations. The remote computing environment is connected to the on-premises datacenter via a site-to-site IPSec tunnel. The external DNS provider has been configured to use weighted round-robin routing to load balance connections from the Internet.

During testing, the company discovers that only 20% of connections completed successfully.

Review the network architecture and supporting documents and fulfill these requirements:
Identify the correct options to provide adequate configuration for hybrid cloud architecture.

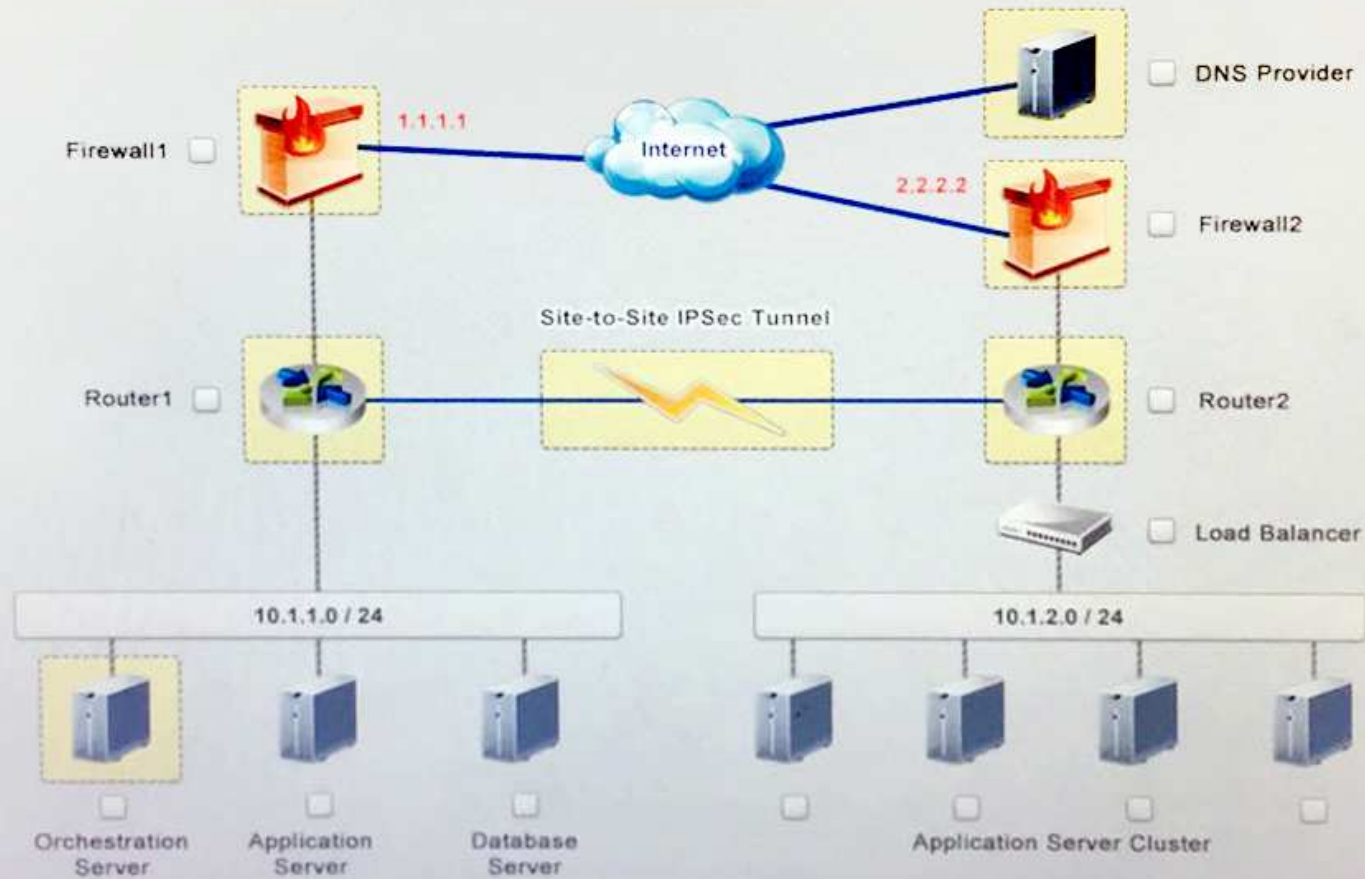
Instructions:

If at any time you would like to bring back the initial state of the simulation, please select the Reset button. When you have completed the simulation, please select the Done button to submit. Once the simulation is submitted, please select the Next button to continue.

Simulation

PART 1

Instruction: Click on each device to review more information of DNS, Firewall1, Firewall2, Router1, Router2, VPN and Orchestration Server.



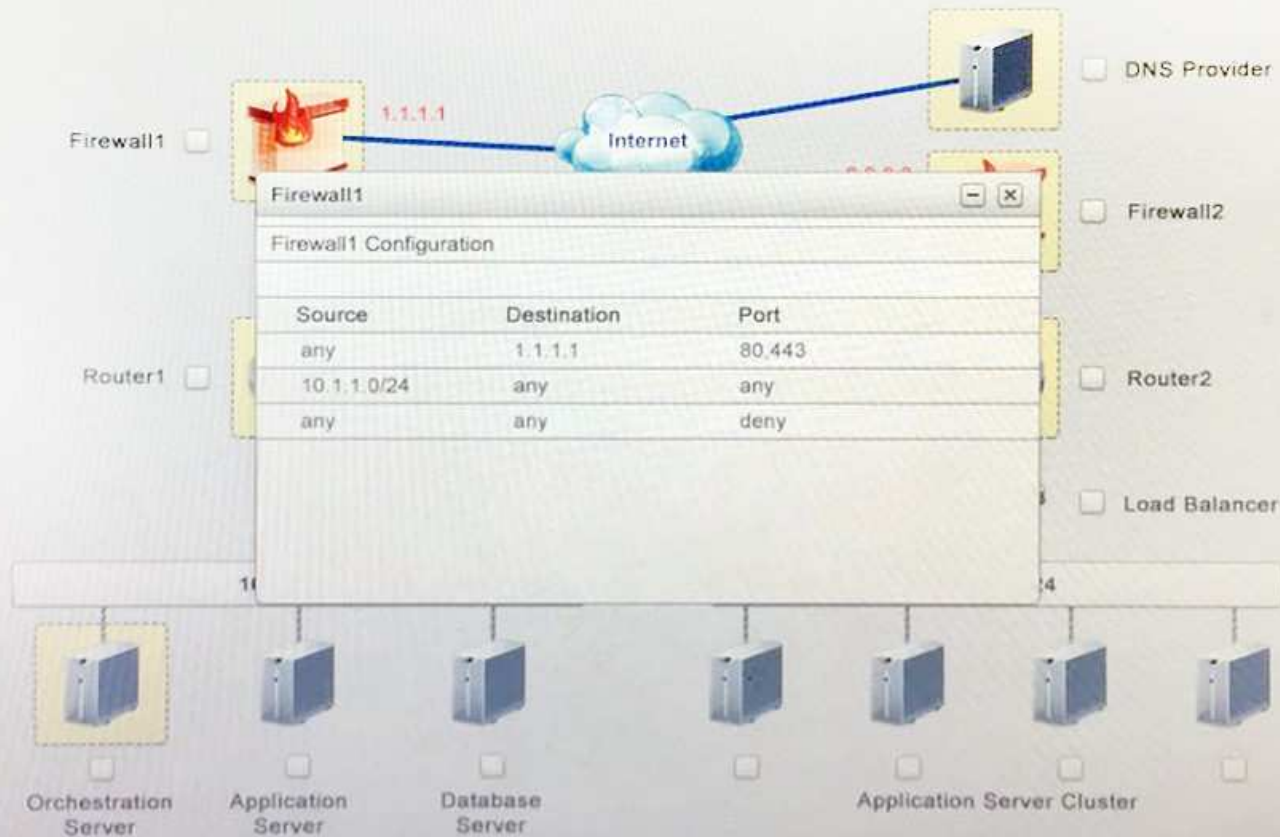
PART 1

PART 2

Clickable items

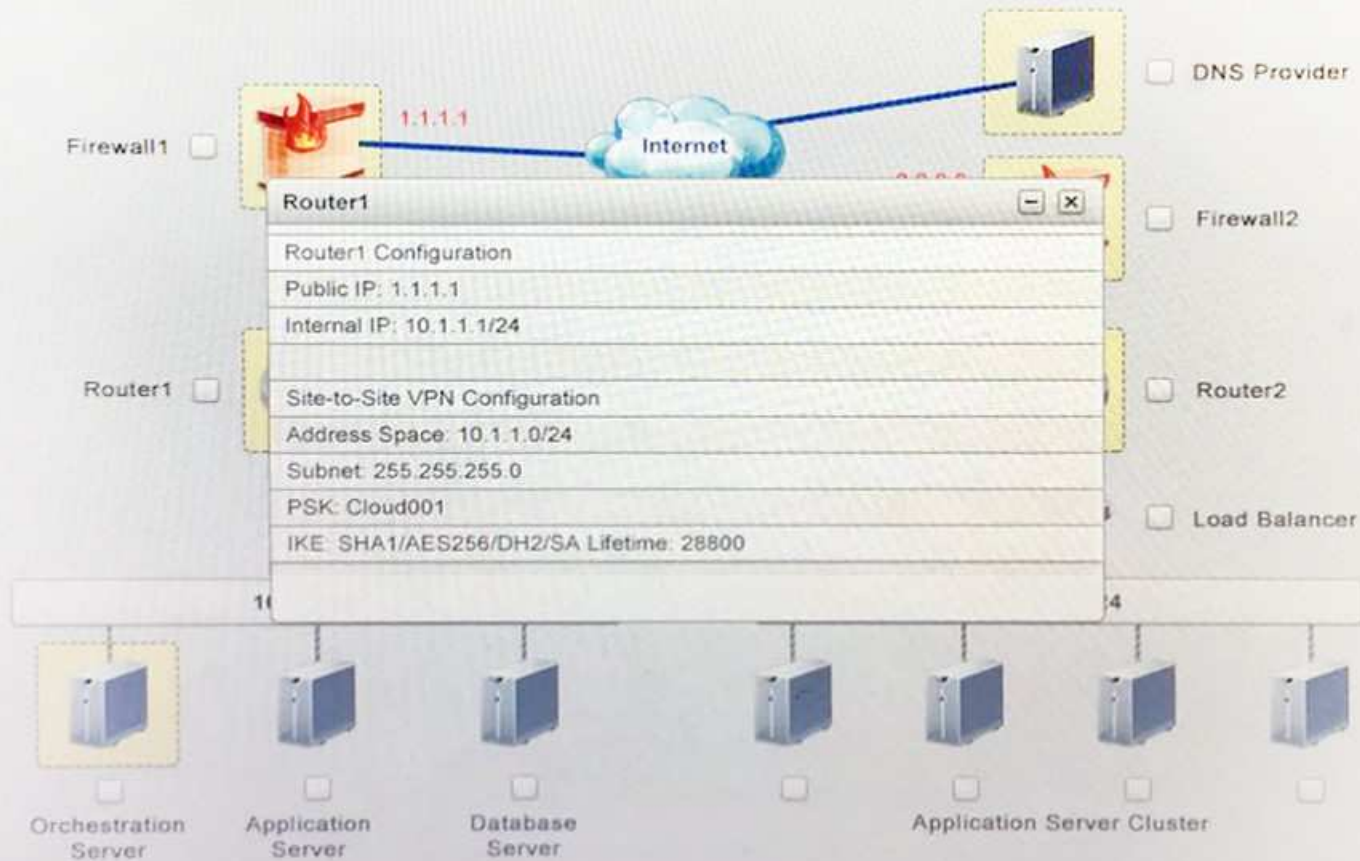
PART 1

Instruction: Click on each device to review more information of DNS, Firewall1, Firewall2, Router1, Router2, VPN and Orchestration Server.



PART 1

Instruction: Click on each device to review more information of DNS, Firewall1, Firewall2, Router1, Router2, VPN and Orchestration Server.



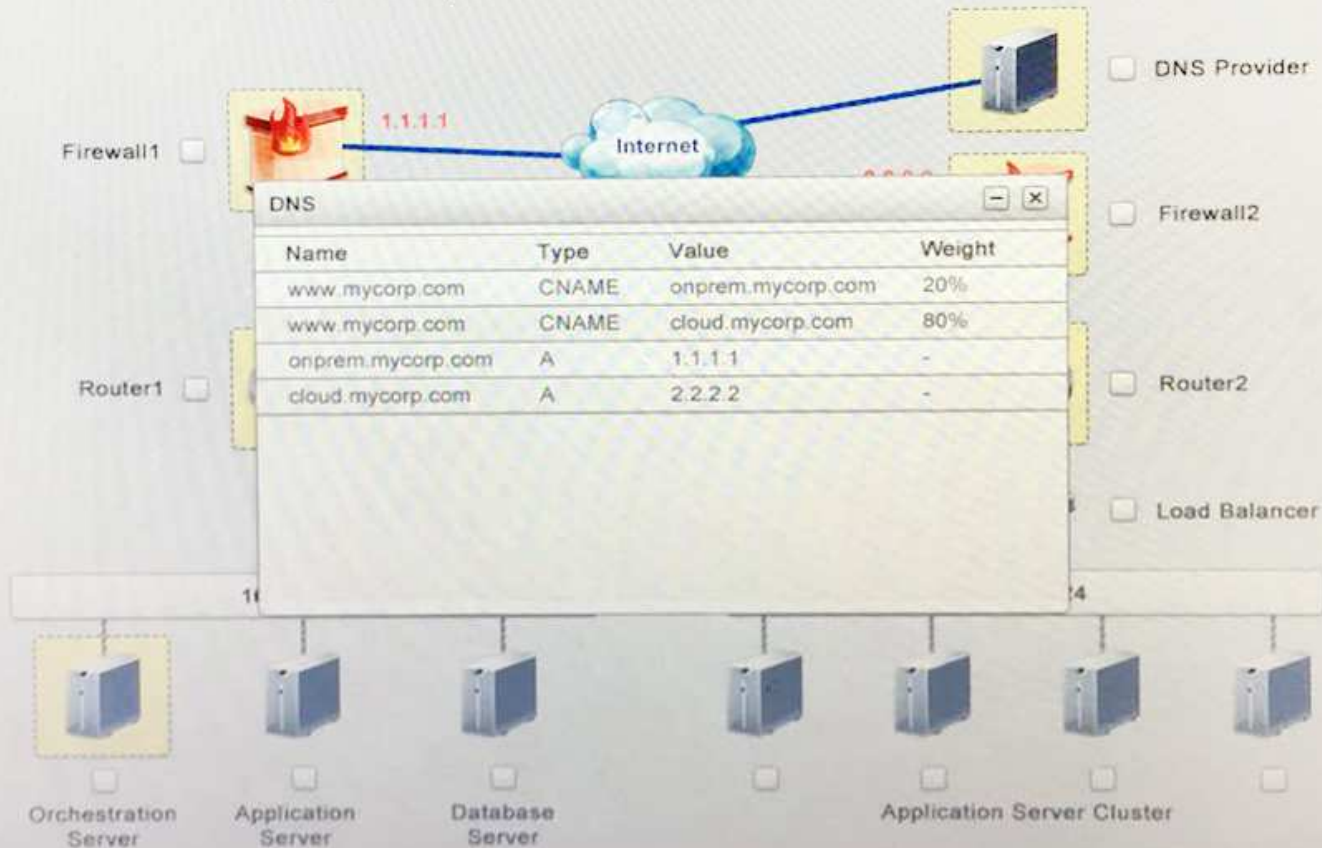
PART 1

PART 2

Clickable items

PART 1

Instruction: Click on each device to review more information of DNS, Firewall1, Firewall2, Router1, Router2, VPN and Orchestration Server.



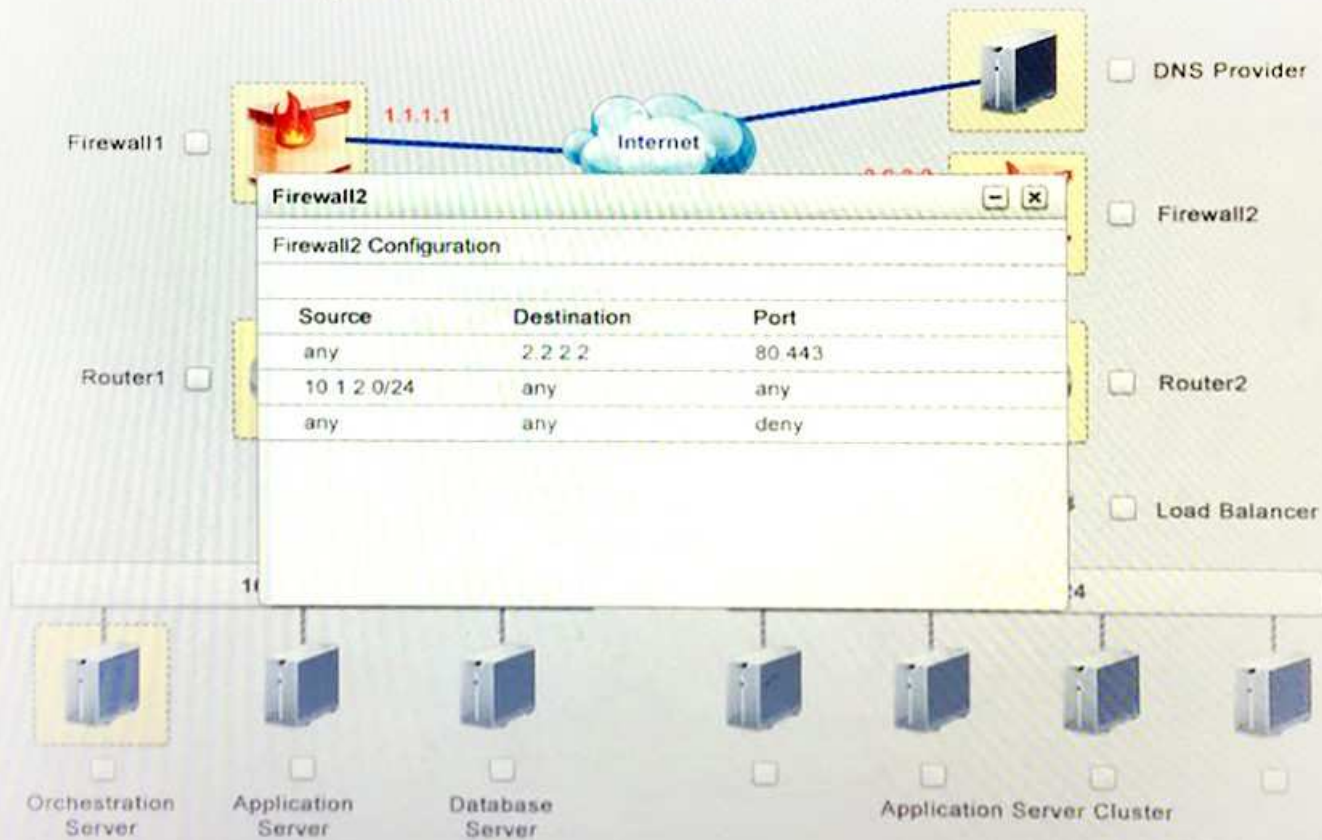
PART 1

PART 2

Clickable items

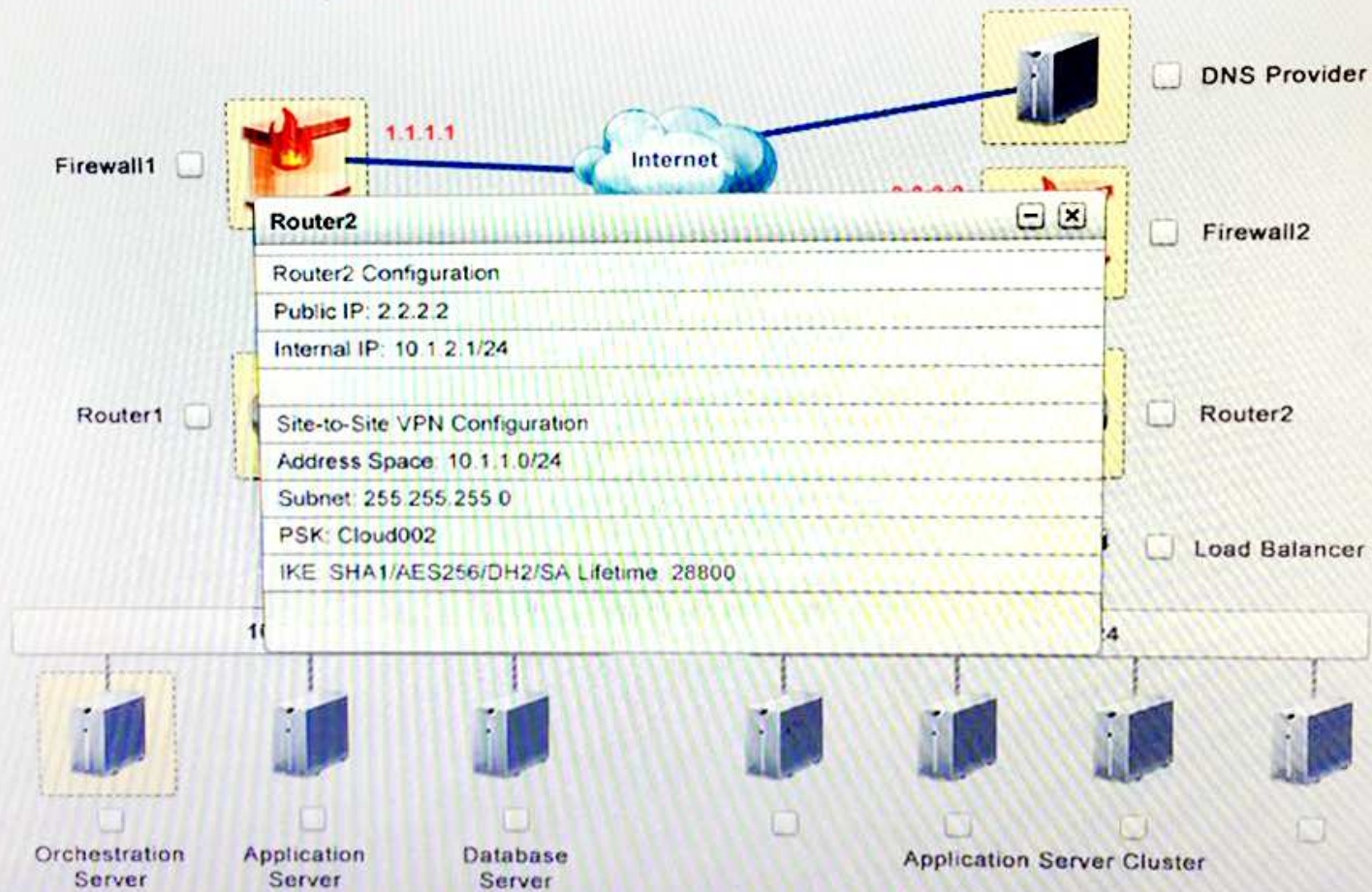
PART 1

Instruction: Click on each device to review more information of DNS, Firewall1, Firewall2, Router1, Router2, VPN and Orchestration Server.



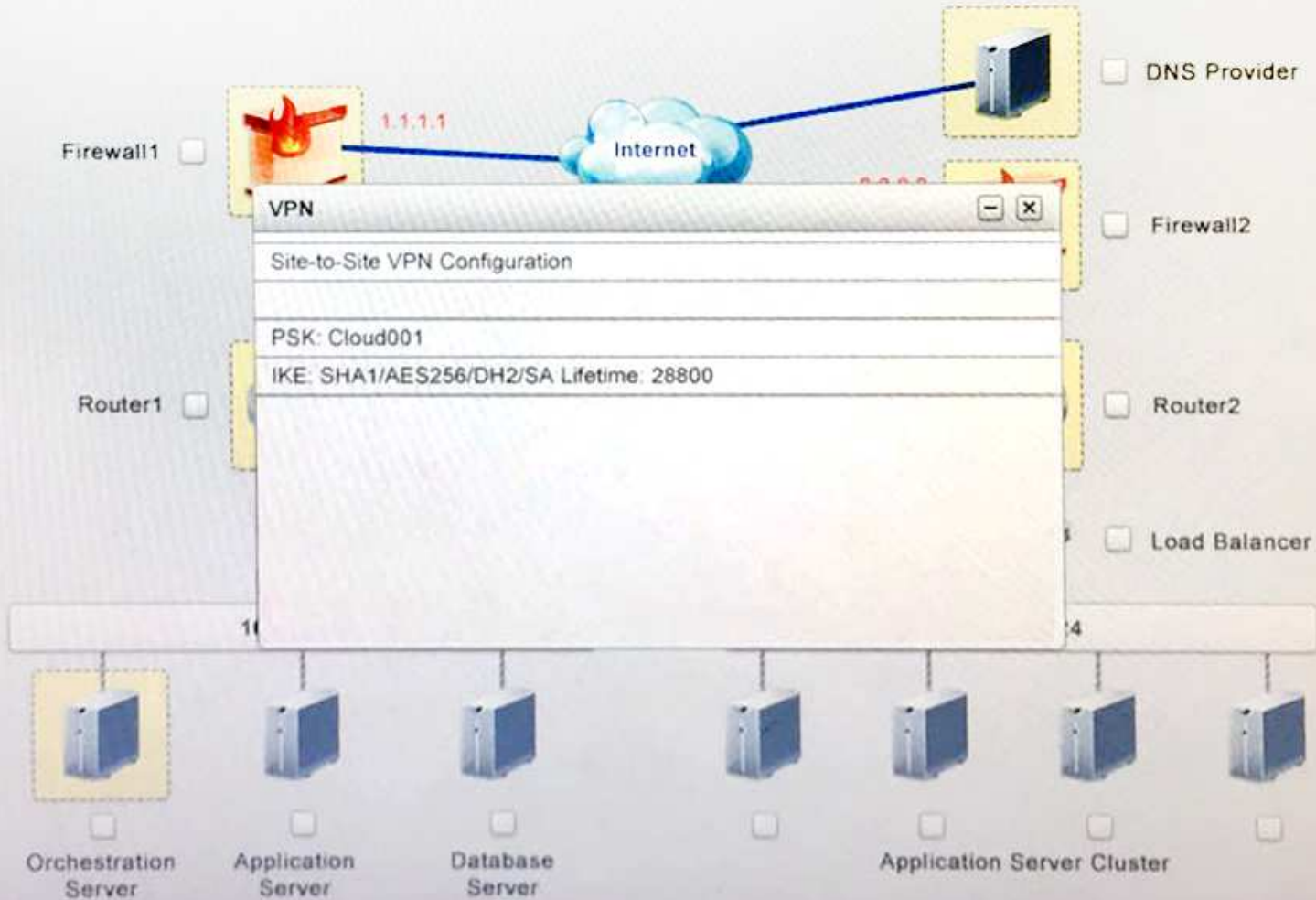
PART 1

Instruction: Click on each device to review more information of DNS, Firewall1, Firewall2, Router1, Router2, VPN and Orchestration Server.



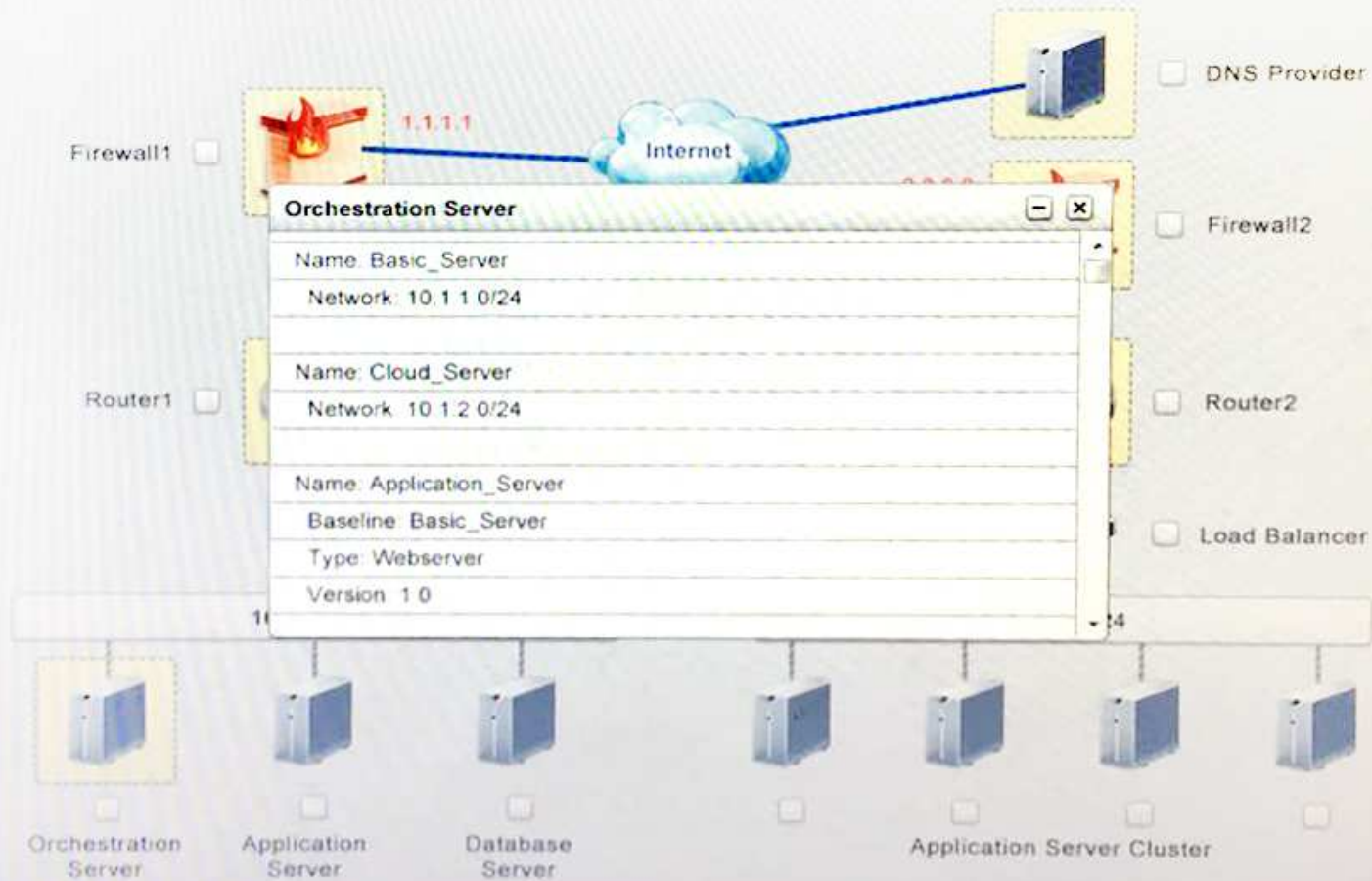
PART 1

Instruction: Click on each device to review more information of DNS, Firewall1, Firewall2, Router1, Router2, VPN and Orchestration Server.



PART 1

Instruction: Click on each device to review more information of DNS, Firewall1, Firewall2, Router1, Router2, VPN and Orchestration Server.

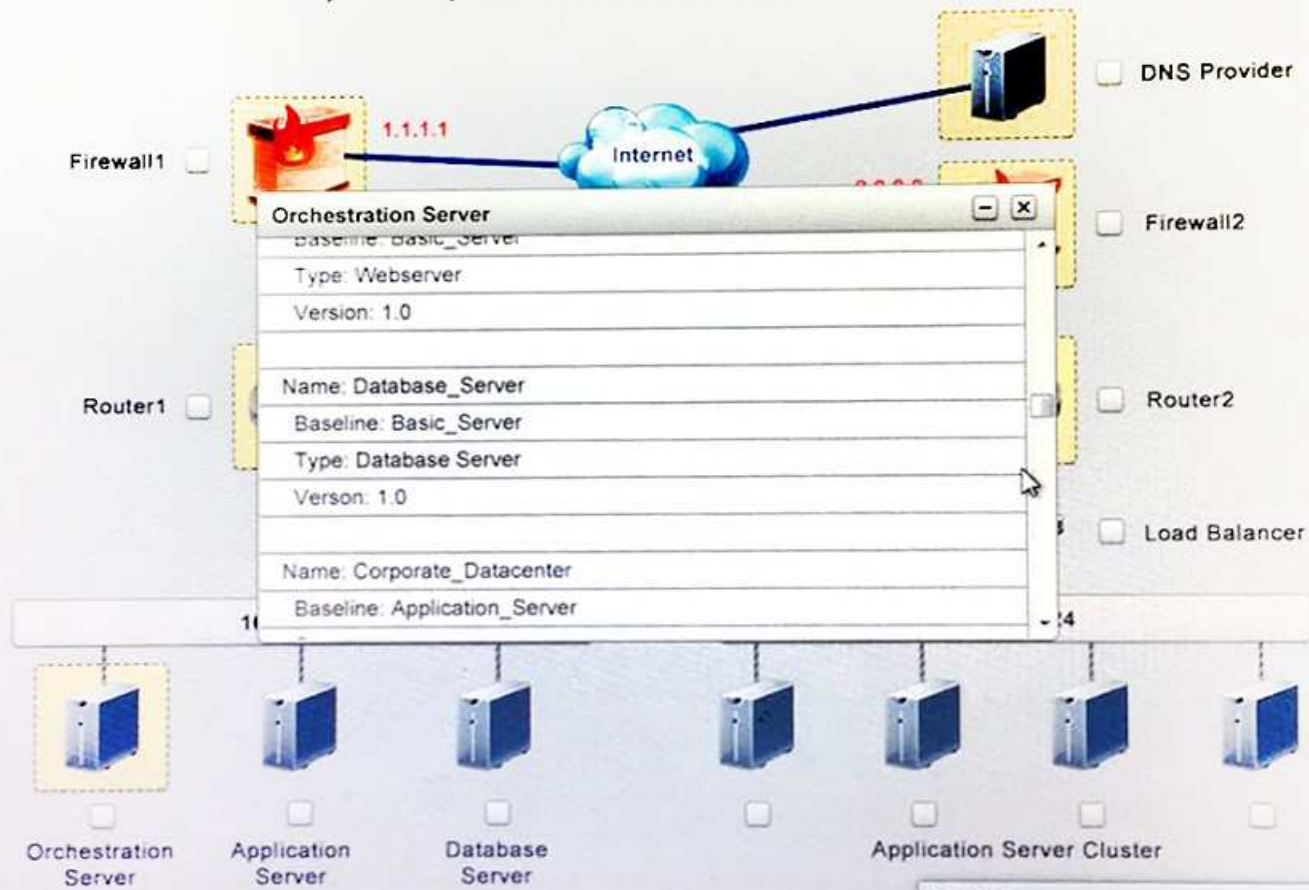


PART 1

PART 2

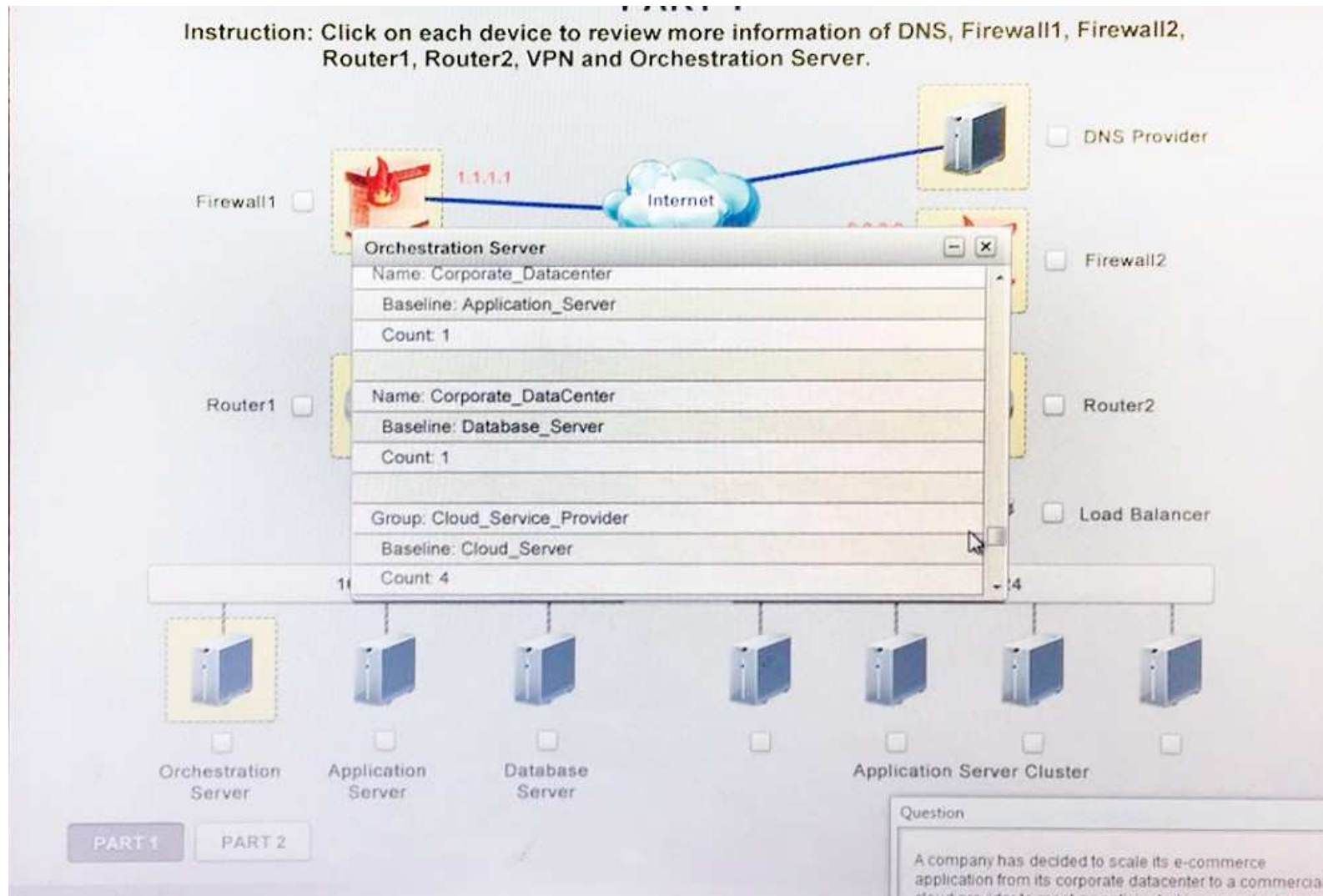
Clickable items

Router1, Router2, VPN and Orchestration Server.



Question

A company has decided to scale its e-commerce application from its corporate datacenter to a commercial



Instruction: Only select a maximum of TWO options from the multiple choice question.

- A. Deploy a Replica of the Database Server in the Cloud Provider
- B. Update the PSK (Pre-shared key in Router2)

- C. Update the A record on the DNS from 2.2.2.2 to 1.1.1.1
- D. Promote deny All to allow All in Firewall1 and Firewall2
- E. Change the Address Space on Router2
- F. Change internal IP Address of Router1
- G. Reverse the Weight property in the two CNAME records on the DNS
- H. Add the Application Server at on-premises to the Load Balancer

Correct Answer: AH

Section: (none)

Explanation

Explanation/Reference:

QUESTION 48

A new private cloud platform is being deployed by an engineer. SLA requirements state that any clusters should have a baseline redundancy sufficient to handle the failure of at least two hosts. The engineer records the following metrics after the deployment:

	CPU Utilization	RAM Utilization	NIC Utilization	Disk Utilization
Host 1	90%	10%	90%	50%
Host 2	50%	10%	30%	50%
Host 3	65%	90%	35%	50%
Host 4	65%	90%	25%	50%
Host 5	65%	85%	30%	50%

Which of the following metrics is MOST likely to represent a violation of SLA?

- A. RAM utilization
- B. NIC utilization
- C. CPU utilization
- D. Disk utilization

Correct Answer: D

Section: (none)

Explanation

Explanation/Reference:

QUESTION 49

Email users report that it takes more than one minute to open emails, including those without attachments. There are three email instances in three different regions hosted by the same CSP. Other applications hosted by the same CSP have no reported issues. Which of the following solutions BEST resolves the issue?

- A. Confirm that the email instances have sufficient bandwidth.
- B. Install monitoring software on the email instances.
- C. Check the antivirus software settings and disable real-time message scanning.
- D. Ensure the requested IOPS are being provided to the email instances.

Correct Answer: C

Section: (none)

Explanation

Explanation/Reference:

QUESTION 50

A hospital is deploying a web-based application in its private cloud to service multiple facilities in a region. This application is used by employees of the hospital, as well as the patients and their families. Which of the following security configurations is MOST likely to be deployed to secure the information from the application?

- A. IPSec
- B. PPTP
- C. L2TP
- D. SSL/TLS

Correct Answer: D

Section: (none)

Explanation

Explanation/Reference:

QUESTION 51

A cloud-based web store is experiencing poor website performance and unavailability. Which of the following approaches would prevent the issue without administrator intervention?

- A. Install and deploy a load balancer in the front of the web server.

- B. Increase the computing resources to the web server.
- C. Increase the network's bandwidth to handle the spike.
- D. Partner with a cloud provider to scale the required resources as needed.

Correct Answer: A

Section: (none)

Explanation

Explanation/Reference:

QUESTION 52

A technician is configuring a new web application to be highly available. The technician has configured multiple web servers in different availability zones at a public cloud provider. The application requires users to be directed to the same server each time they visit. Which of the following network components is MOST likely to accomplish this?

- A. Network firewall
- B. Intrusion prevention system
- C. Global load balancer
- D. Virtual private network

Correct Answer: D

Section: (none)

Explanation

Explanation/Reference:

QUESTION 53

Which of the following would be appropriate when considering inbound access security for a web-based SaaS solution?

- A. Antivirus/anti-malware
- B. IPSec
- C. Firewall
- D. Obfuscation

Correct Answer: B

Section: (none)

Explanation

Explanation/Reference:

QUESTION 54

A company has an SLA of 15ms for storage latency.

	90 days ago	60 days ago	30 days ago	Now
Space usage	65%	70%	75%	80%
Average latency	8ms	10ms	15ms	25ms
Storage CPU utilization	50%	65%	90%	95%

Given the above metrics, which of the following is the MOST appropriate change to the environment?

- A. Add computing nodes and data nodes on the storage side.
- B. Add more storage shelves to the current array.
- C. Enable compression on the storage side.
- D. Enable deduplication on the storage side.

Correct Answer: C

Section: (none)

Explanation

Explanation/Reference:

QUESTION 55

A VM was deleted by mistake today at 11:05 a.m. Below are the backups currently available for the VM:

Backup Type	Date Time
Incremental	Today 00:00
Incremental	Yesterday 00:00
Synthetic-full	Yesterday 12:00
Full	Three days ago 00:00
Snapshot	Today 11:00
Snapshot	Today 07:00
Snapshot	Today 03:00

Crash-consistent restore is acceptable. Which of the following backups should be chosen?

- A. Snapshot from today at 11:00
- B. Full from three days ago at 00:00
- C. Incremental from today at 00:00
- D. Synthetic-full from yesterday at 12:00

Correct Answer: A

Section: (none)

Explanation

Explanation/Reference:

QUESTION 56

After deploying multiple copies of database servers, data scrambling is started on them to anonymize user data. A few minutes later, the systems administrator receives multiple complaints regarding the performance of other VMs. CPU and memory have been eliminated as possible bottlenecks. Which of the following should be verified NEXT as a possible bottleneck?

- A. Storage array
- B. Database drivers
- C. Hardware load balancer
- D. Internet connection speed

Correct Answer: B

Section: (none)

Explanation

Explanation/Reference:

QUESTION 57

A company is implementing a launchpad within an existing application that will point to an existing SaaS provider. One of the requirements is the user should not have to log on multiple times. SSO is in place. When the launchpad is used, the user is redirected to SaaS providers as designed, but is asked for login credentials. Which of the following is the MOST likely cause of this issue?

- A. Users do not exist within the SaaS provider.
- B. Group permissions are incorrect.
- C. Users do not exist in directory services.
- D. The federation is failing.

Correct Answer: D

Section: (none)

Explanation

Explanation/Reference:

QUESTION 58

A cloud service administrator is consuming PaaS services and is performing baseline configuration tests. Which of the following is part of the PaaS consumer's responsibility with respect to the baseline confirmation tests?

- A. Application versions
- B. CPU utilization
- C. RAM utilization
- D. Operating system versions

Correct Answer: B

Section: (none)

Explanation

Explanation/Reference:

QUESTION 59

An engineer is configuring the monitoring for a new application server. During the day, the CPU on the server is baselined at approximately 30% utilization. At midnight, a batch job is scheduled to run that will drive the CPU utilization up to 75% for approximately an hour. Any time the CPU utilization is at 40% or higher for

longer than ten minutes, administrators will receive an alert. Which of the following is the BEST method to ensure administrators do not experience message fatigue due to false alerts?

- A. Set a different threshold during the batch peak time.
- B. Increase the alert time threshold to 65 minutes.
- C. Increase the alert utilization threshold to 80%.
- D. Manually disable monitoring during the batch job.

Correct Answer: A

Section: (none)

Explanation

Explanation/Reference:

QUESTION 60

A cloud administrator configures a new web server for the site <https://companyname.com>. The administrator installs a wildcard SSL certificate for *.companyname.com. When users attempt to access the site, a certificate error is received. Which of the following is the MOST likely cause of the error?

- A. Certificate misconfigured
- B. Certificate expired
- C. Certificate revoked
- D. Certificate not signed

Correct Answer: A

Section: (none)

Explanation

Explanation/Reference:

QUESTION 61

A cloud service company is proposing a solution to a major sporting venue. The solution offers 99.999% availability during special events, which is proven through specialized testing. Which of the following techniques should be applied to confirm the high availability claimed by the company? (Select TWO.)

- A. Vulnerability testing
- B. Penetration testing
- C. Load testing
- D. Failover testing

E. Integration testing

Correct Answer: BD

Section: (none)

Explanation

Explanation/Reference:

QUESTION 62

An organization is replacing its internal human resources system with a SaaS-based application. The solution is multi-tenant, and the organization wants to ensure ubiquitous access while preventing password replay attacks. Which of the following would BEST help to mitigate the risk?

- A. Implement destination resources authentication.
- B. Require and implement two-factor authentication.
- C. Remove administrator privileges from users' laptops.
- D. Combine network authentication and physical security in one card/token.

Correct Answer: B

Section: (none)

Explanation

Explanation/Reference:

QUESTION 63

The following three hosts are being put into a virtualization cluster for a new project initiative:

	CPU Cores	CPU Clock Speed	Memory
Host 1	24	2GHz	256GB
Host 2	12	2GHz	256GB
Host 3	12	2GHz	256GB

As more VMs are deployed to the cluster, which of the following virtualization technologies is MOST likely to report an error with this configuration?

- A. High availability
- B. Ballooning
- C. Memory overcommitment

D. Hyperthreading

Correct Answer: B

Section: (none)

Explanation

Explanation/Reference:

QUESTION 64

A user has submitted a ticket to request additional VMs due to long wait times for online ordering. Given the snapshot of the resources in the table below:

Component	Resource	Utilization
Web Server	vCPU	35%
	Memory	85%
	Disk	30%
	Network	75%
Database Server	vCPU	40%
	Memory	60%
	Disk	65%
	Network	14%

Which of the following is the BEST option for the administrator to resolve the ticket?

- A. Add vCPU to the database server to increase capacity.
- B. Add disks to the database server to increase capacity.
- C. Add virtual network ports to the web server to increase capacity.
- D. Add memory to the web server to increase capacity.

Correct Answer: D

Section: (none)

Explanation

Explanation/Reference:

QUESTION 65

A company is implementing a SaaS solution with a large user base. SaaS solution licensing is user based, and user management is critical to keep the cost in check. Which of the following is the MOST efficient way to meet this requirement?

- A. Have the administrator of the SaaS solution keep track of user activities.
- B. Have a nightly upload to the SaaS provider of the current user base based on API call.
- C. Have users remove their SaaS accounts when they no longer need the service.
- D. Have a weekly user management script maintain the SaaS user base.

Correct Answer: A

Section: (none)

Explanation

Explanation/Reference:

QUESTION 66

A cloud administrator updates the syslog forwarder configuration on a local server in production to use a different port. The development team is no longer receiving the audit logs from that server. However, the security team can retrieve and search the logs for the same server. Which of the following is MOST likely the issue?



<https://www.gratisexam.com/>

- A. The development team is not looking at the correct server when querying for the logs.
- B. The security team has greater permissions than the development team.
- C. The audit logging service has been disabled on the server.
- D. The development team's syslog server is configured to listen on the wrong port.

Correct Answer: B

Section: (none)

Explanation

Explanation/Reference:

QUESTION 67

<https://www.gratisexam.com/>

IaaS users are reporting longer than expected wait times when accessing the virtual file repository. There are more than 2TB of free disk space, and vCPU and vRAM do not reach more than 75% utilization. In which of the following ways should the cloud systems administrator analyze this issue?

- A. Access the cloud services portal and increase the amount of available disk space by 25%.
- B. Access the cloud services portal and check the amount of CPU and RAM on the host machine.
- C. Access the cloud services portal and look at the historical performance numbers.
- D. Access the cloud services portal and check the security log for access denied requests.

Correct Answer: B

Section: (none)

Explanation

Explanation/Reference:

QUESTION 68

A software company recently moved all of its development testing to a public cloud environment. The company primarily uses IaaS to deploy and test its code. The company needs the software developers to be more agile and efficient when testing application code. Which of the following backup types should the developers use to BEST ensure the speedy recovery of a system if it is damaged?

- A. Snapshots
- B. Full
- C. Incremental
- D. Differential

Correct Answer: C

Section: (none)

Explanation

Explanation/Reference:

QUESTION 69

A cloud administrator works for an online gaming company that is hosting its multiplayer servers in a public IaaS cloud. The following metrics are reported during a controlled beta test:

RAM usage	80%
Bandwidth usage	50%
Average ping	800ms

The beta test shows poor performance for gamers. Which of the following should the cloud administrator implement FIRST to improve the gamers' experience?

- A. Scale the deployment of multiplayer servers by doubling the number of VMs.
- B. Increase network bandwidth on the multiplayer servers.
- C. Increase the RAM on the multiplayer servers.
- D. Deploy multiplayer servers in public cloud locations closer to the user base.

Correct Answer: B

Section: (none)

Explanation

Explanation/Reference:

QUESTION 70

An administrator defines a backup as follows:

- One weekly full backup
- Daily incremental backup

Which of the following BEST describes where the administrator would define this?

- A. Backup SLA document
- B. Backup orchestration workflow
- C. Backup schedule
- D. Provisioning schedule

Correct Answer: C

Section: (none)

Explanation

Explanation/Reference:

QUESTION 71

In a private cloud environment, which of the following is the BEST way to update 20 VMs with the same patch that has been regression tested and approved for rollout?

- A. Automate the distribution of the patch and use an orchestration tool to roll it out.

- B. Roll out the patch manually to the 20 VMs and reboot the system.
- C. Deploy the patch to ten VMs for testing and then install it on the remaining VMs.
- D. Install the patch on as many VMs as possible during the next maintenance window.

Correct Answer: D

Section: (none)

Explanation

Explanation/Reference:

QUESTION 72

A cloud administrator has configured a connection between two virtual private cloud environments at a public cloud provider that are each in different accounts. The administrator has configured the accounts correctly so they can connect to each other's resources. Both cloud environments have policies that allow anyone from 0.0.0.0/0 on TCP port 22. The following table shows the network configuration information:

Virtual Private Cloud	IP Range	Server IP Address
Finance	10.250.40.0/24	10.250.40.100
Sales	10.250.48.0/24	10.250.48.214

However, the administrator is unable to establish an SSH connection from a server in 10.250.40.100 to 10.250.48.214. Which of the following is the MOST likely issue?

- A. The network ACL is not configured to allow SSH access.
- B. The IP configuration on one of the servers is incorrect.
- C. The administrator does not have sufficient credentials.
- D. The routing tables have not been updated correctly.

Correct Answer: D

Section: (none)

Explanation

Explanation/Reference:

QUESTION 73

A hospital is leveraging a third-party-hosted, SaaS-based EMRS for all its regional locations. The EMRS will consolidate all existent stand-alone regional systems. All regional systems managers are concerned about the new system availability. Which of the following should the new EMRS architect do to address the manager's concerns?

- A. Analyze business requirements and design the new EMRS to run the most popular IaaS provider that meets the health industry's needs.
- B. Analyze and communicate to regional managers that dual service providers will be used at all regional locations.
- C. Analyze business requirements, and design and deploy client-to-site VPN for all regional hospital staff with two-factor authentication or a client certificate.
- D. Analyze business requirements and deploy the SaaS EMRS within the hospital's headquarters and create a client-to-site VPN from each region.

Correct Answer: C

Section: (none)

Explanation

Explanation/Reference:

QUESTION 74

A physical server with SSD drives that hosts an IO-intensive database has been migrated into a private cloud to ensure further growth possibilities and accommodate quarterly load spikes (up to 10,000 IOPs). The requirement is to have log partition latency below 5ms and data partition latency below 10ms, irrespective of the load spikes. A cloud administrator has conducted extensive tests after the migration. Which of the following test results would ensure the migration is successful?

- A.
- | | 5000 IOPs | 10,000 IOPs |
|------------------------------|-----------|-------------|
| Log partition read latency | 4ms | 5ms |
| Log partition write latency | 1ms | 1ms |
| Data partition read latency | 6ms | 8ms |
| Data partition write latency | 1ms | 1ms |
- B.
- | | 5000 IOPs | 10,000 IOPs |
|------------------------------|-----------|-------------|
| Log partition read latency | 4ms | 5ms |
| Log partition write latency | 1ms | 1ms |
| Data partition read latency | 6ms | 11ms |
| Data partition write latency | 800us | 900us |
- C.
- | | 5000 IOPs | 10,000 IOPs |
|------------------------------|-----------|-------------|
| Log partition read latency | 4ms | 5ms |
| Log partition write latency | 800us | 900us |
| Data partition read latency | 10ms | 12ms |
| Data partition write latency | 800us | 900us |

D.

	5000 IOPs	10,000 IOPs
Log partition read latency	4ms	5ms
Log partition write latency	10ms	10ms
Data partition read latency	10ms	10ms
Data partition write latency	10ms	10ms

Correct Answer: A

Section: (none)

Explanation

Explanation/Reference:

QUESTION 75

A company hosts its server in a public IaaS cloud. The company's management decides to migrate the servers to a different geographical region that is closer to the user base. A cloud administrator creates a new environment in that geographical region. Which of the following is the BEST way to migrate the VM from the original geographic region to the new region?

- A. 1. Create a full backup of the VM.
2. Copy the backup files into the new region using FTP.
3. Restore the VM from the backup files.
- B. 1. Create a VM image.
2. Export the VM image to the new region using vendor's tools.
3. Deploy a new VM based on the created image.
- C. 1. Create a VM clone.
2. Copy the clone into the new region using FTP.
3. Apply the network and security groups from the new region to the cloned VM and start it.
- D. 1. Create a new VM in the new region.
2. Restore a full-system backup from the original VM.
3. Apply the network and security groups from the original region to the new VM.

Correct Answer: D

Section: (none)

Explanation

Explanation/Reference:

QUESTION 76

A consultant is helping a gaming-as-a-service company set up a new cloud. The company recently bought several graphic card that need to be added to the servers. Which of the following should the consultant suggest as the MOST cost effective?

- A. Private
- B. Public
- C. Community
- D. SaaS

Correct Answer: A

Section: (none)

Explanation

Explanation/Reference:

QUESTION 77

A company wants to implement a public IaaS solution but also wants to address site resiliency challenges. When selecting an IaaS provider, which of the following should a cloud technician look for within the provider's capabilities to meet the requirements?

- A. Bare metal service
- B. Failure zones
- C. Backup services
- D. Dedicated connectivity

Correct Answer: D

Section: (none)

Explanation

Explanation/Reference:

QUESTION 78

A security administrator wants to automate the implementation of network-based ACLs for services deployed within the company VPC. The security administrator is mostly concerned with intra-VPN separation to prevent unauthorized communication between cloud deployed services within the VPC.

Which of the following should the security administrator implement?

- A. Include a list of the firewall rules in the orchestration script
- B. Use the cloud API to deploy and configure anti-malware services

- C. Configure the appropriate IDS rules using the cloud portal
- D. Write custom scripts to deploy a network ACL between the VPC and the company's network

Correct Answer: C

Section: (none)

Explanation

Explanation/Reference:



<https://www.gratisexam.com/>