

N10-006 comptia

Number: N10-006
Passing Score: 800
Time Limit: 120 min



<http://www.gratisexam.com/>

Sections

1. (none)

Simulations

QUESTION 1

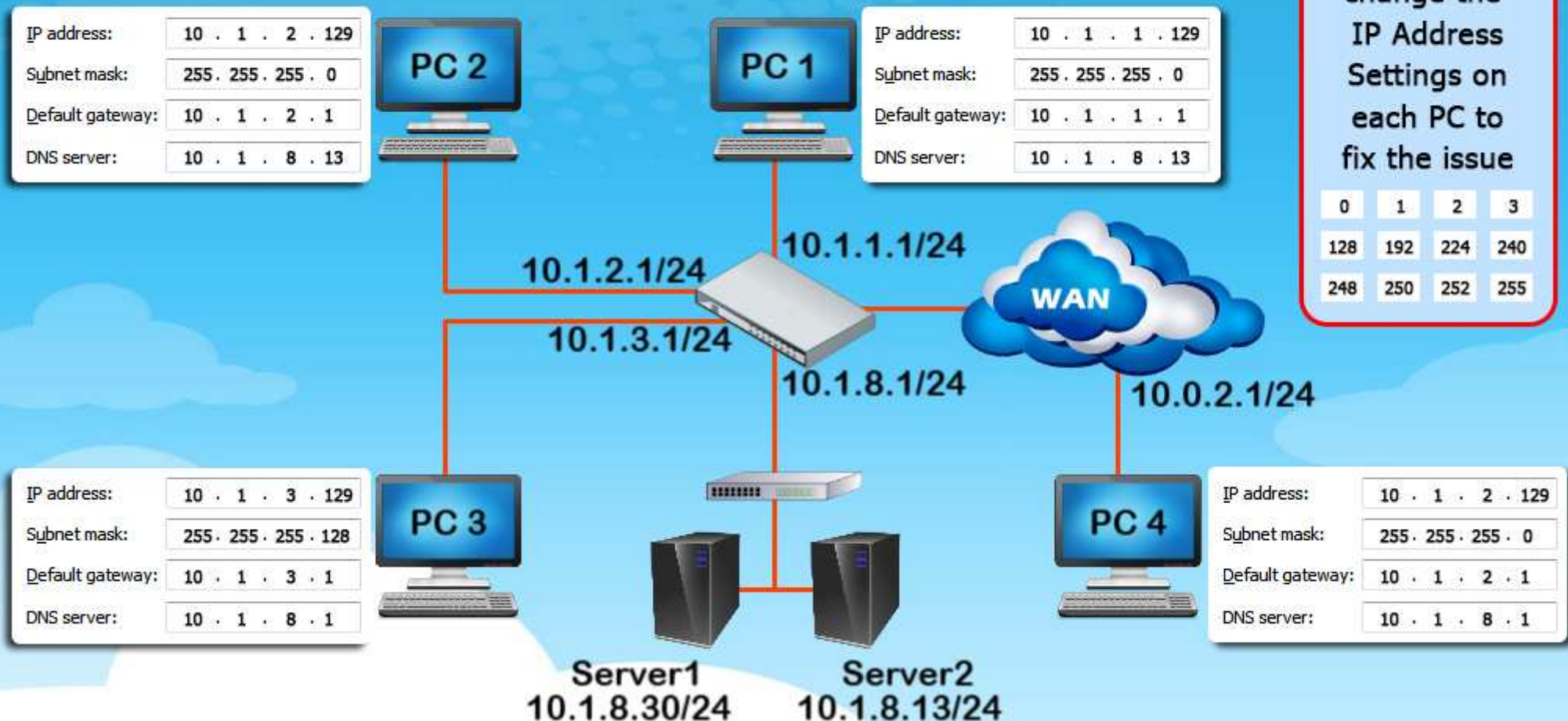
After recent changes to the pictured network, several users are unable to access the servers. Only PC1, PC2, PC3, and PC4 are configurable. You can only change the adapter configurations to each PC.

Select and Place:

Restore connectivity by making the appropriate changes to the infrastructure.

Use these options to change the IP Address Settings on each PC to fix the issue

0	1	2	3
128	192	224	240
248	250	252	255



Correct Answer:

Restore connectivity by making the appropriate changes to the infrastructure.

Use these options to change the IP Address Settings on each PC to fix the issue

0	1	2	3
128	192	224	240
248	250	252	255

IP address:	10 . 1 . 2 . 129
Subnet mask:	255 . 255 . 255 . 0
Default gateway:	10 . 1 . 2 . 1
DNS server:	10 . 1 . 8 . 13



10.1.2.1/24



10.1.1.1/24

IP address:	10 . 1 . 1 . 129
Subnet mask:	255 . 255 . 255 . 0
Default gateway:	10 . 1 . 1 . 1
DNS server:	10 . 1 . 8 . 13

10.1.3.1/24



IP address:	10 . 1 . 3 . 129
Subnet mask:	255 . 255 . 255 . 0
Default gateway:	10 . 1 . 3 . 1
DNS server:	10 . 1 . 8 . 1

Server1
10.1.8.30/24



10.1.8.1/24

Server2
10.1.8.13/24



10.0.2.1/24



IP address:	10 . 0 . 2 . 129
Subnet mask:	255 . 255 . 255 . 0
Default gateway:	10 . 0 . 2 . 1
DNS server:	10 . 1 . 8 . 1

Section: (none)

Explanation

Explanation/Reference:

On this simulation, you will be asked to test connectivity after fixing the issues. You MUST ping the other three computers on EACH computer (i.e. from PC1, ping PC2, PC3, PC4, and from PC2, ping PC1, PC3 and PC4, etc)

QUESTION 2

corporate headquarters provided your office a portion of their B subnet to use at a new office location.
Allocate the minimum number of addresses (using CIDR notation) needed to accommodate each department.

Range Given: 172.30.232.0/24

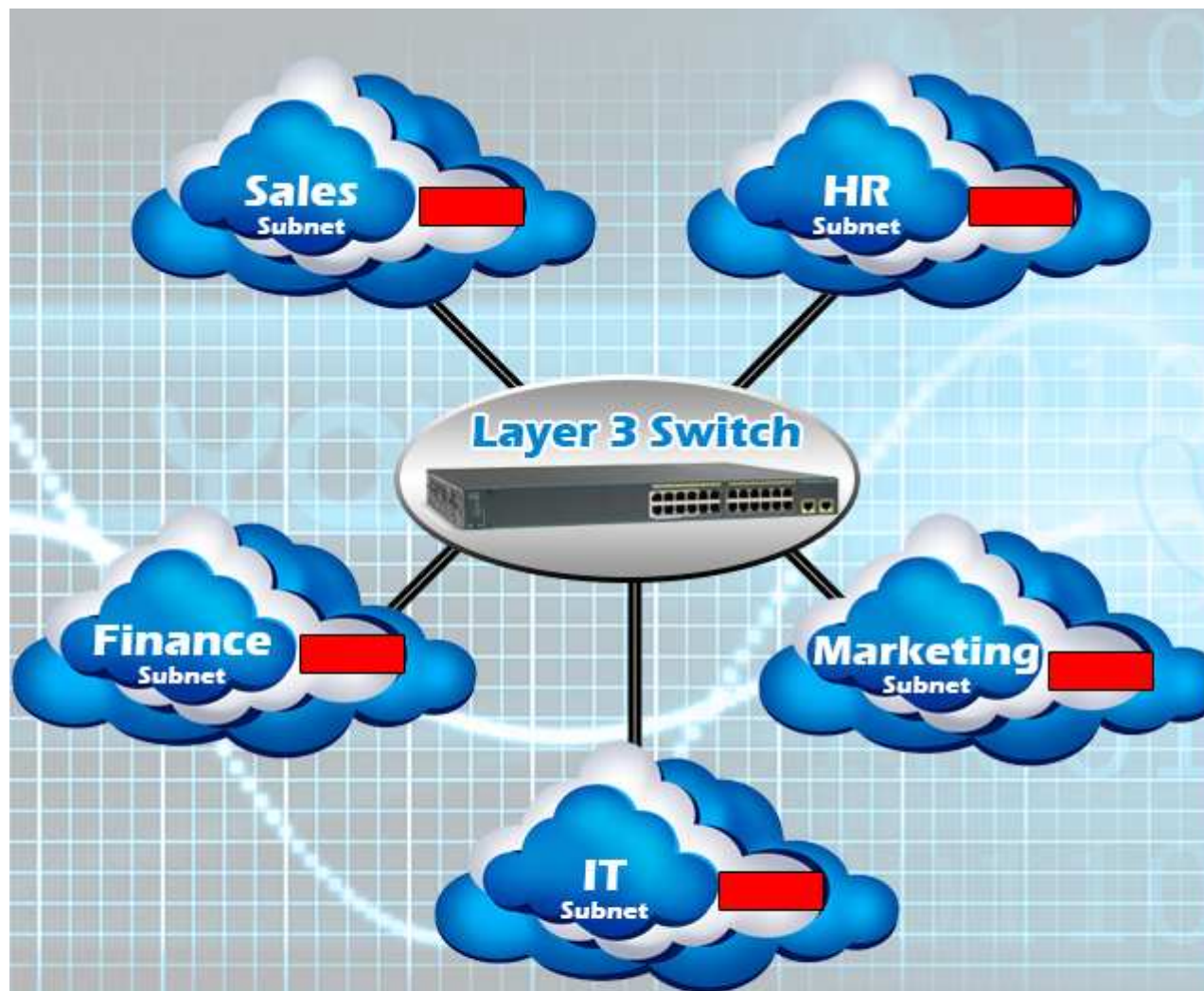
SALES	57 devices
HR	23 devices
IT	12 devices
Finance	32 devices
Marketing	9 devices



<http://www.gratisexam.com/>

After accommodating each department, identify the unused portion of the subnet by responding to the question on the graphic. All RED boxes must be filled.

Select and Place:



Which of the following would represent the **LARGEST** possible contiguous block of the remaining addresses?

OPTIONS

corporate headquarters provided your office a portion of their B subnet to use at a new office location.

Allocate the minimum number of addresses (using CIDR notation) needed to accommodate each department.

Range Given: 172.30.232.0/24

SALES	57 devices
HR	23 devices
IT	12 devices
Finance	32 devices
Marketing	9 devices

After accommodating each department, identify the unused portion of the subnet by responding to the question on the graphic. All RED boxes must be filled.

Available CIDRs:

/03	/04	/05	/06	/07	/08
/09	/10	/11	/12	/13	/14
/15	/16	/17	/18	/19	/20
/21	/22	/23	/24	/25	/26
/27	/28	/29	/30	/31	/32

Correct Answer:



Which of the following would represent the **LARGEST** possible contiguous block of the remaining addresses?

OPTIONS

corporate headquarters provided your office a portion of their B subnet to use at a new office location.

Allocate the minimum number of addresses (using CIDR notation) needed to accommodate each department.

Range Given: 172.30.232.0/24

SALES	57 devices
HR	23 devices
IT	12 devices
Finance	32 devices
Marketing	9 devices

After accommodating each department, identify the unused portion of the subnet by responding to the question on the graphic.
All RED boxes must be filled.

Available CIDRs:

/03	/04	/05	/06	/07	/08
/09	/10	/11	/12	/13	/14
/15	/16	/17	/18	/19	/20
/21	/22	/23	/24	/25	/26
/27	/28	/29	/30	/31	/32

Section: (none)

Explanation

Explanation/Reference:

Sales borrows 2 bits for a block of 64

HR borrows 3 bits for a block of 32

IT borrows 4 bits for a block of 16

Finance borrows 2 bits for a block of 64

Marketing borrows 4 bits for a block of 16

Total used IP Addresses 192

 $256 - 192 = 64$ left over contiguous IP Address Block

QUESTION 3

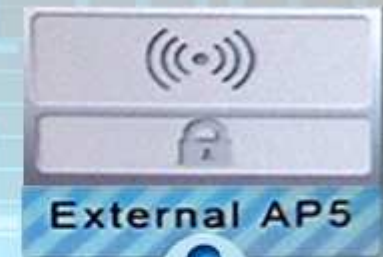
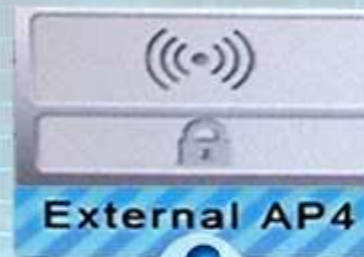
Your company recently purchased a new building down the street from the existing office.

For each of the tasks below, select the appropriate antenna type and encryption object for all wireless access point (AP).

1. Create an encrypted wireless connection between the two buildings that BEST controls signal propagation, while maximizing security.
2. Restrict the wireless signal generated by the access points (AP's) inside Building 1, so that it minimizes broadcast beyond the building.
3. Maximize wireless coverage inside Building 1.
4. Building 1's internal wireless network is for visitors only and must not require any special configuration on the visitor's device to connect.

Select and Place:

Drag and Drop the correct antenna type and security option to each of the correct Access Points accordingly.



OPTIONS



Open



WEP



WPA2-CCMP



WPA2-TKIP



4 dBi Omnidirectional



5 dBi Directional Right



5 dBi Directional Left



14 dBi Parabolic Right



14 dBi Parabolic Left

Correct Answer:

Drag and Drop the correct antenna type and security option to each of the correct Access Points accordingly.

14 dBi Parabolic Right
WPA2-CCMP
External AP4

14 dBi Parabolic Left
WPA2-CCMP
External AP5



OPTIONS

	Open		4 dBi Omnidirectional
	WEP		5 dBi Directional Right
	WPA2-CCMP		5 dBi Directional Left
	WPA2-TKIP		14 dBi Parabolic Right
			14 dBi Parabolic Left

Section: (none)

Explanation

Explanation/Reference:

QUESTION 4

Wireless network users recently began experiencing speed and performance issues after access point 2 (AP2) was replaced due to faulty hardware. The original network was installed according to a consultant's specifications and has always worked without a problem.



<http://www.gratisexam.com/>

You a network technician, have been tasked with evaluating the situation and resolving the issues to improve both performance and connectivity. Refer to the following exhibits and perform any necessary changes to the wireless and wired infrastructure by adjusting devices. Note: Adjust the LEAST number of devices needed to fix the issue.

Select and Place:



Access Point 1	Access Point 2	Access Point 3
IP Address: 192.168.100.151	IP Address: 192.168.100.152	IP Address: 192.168.100.153
Subnet CIDR: 24	Subnet CIDR: 24	Subnet CIDR: 24
Gateway: 192.168.100.1	Gateway: 192.168.100.1	Gateway: 192.168.100.1
SSID: CorpNET	SSID: CorpNET	SSID: CorpNET
Wireless Channel: 01	Wireless Channel: 01	Wireless Channel: 11
Speed: 100	Speed: Auto	Speed: 100
Duplex: Full	Duplex: Auto	Duplex: Full
Wireless Mode: G	Wireless Mode: B	Wireless Mode: G
Security Setting: WPA	Security Setting: WPA	Security Setting: WPA
Password: 123456789b	Password: 123456789b	Password: 123456789b

OPTIONS

Note: Adjust the LEAST number of devices needed to fix the issue.

IP Addresses:

192.168.100.151 192.168.100.152

192.168.100.153 192.168.100.1

Wireless Name: CorpNET

New Router password: 123456789b

Available WiFi Channels:

01 02 03 04 05 06 07 08 09 10 11

CIDR Options:

24 25 26 27 28 29 30

WiFi Mode:

A B G N

Speed

Auto 100 1000

Duplex

Auto Half Full

Available Security Types:

OPEN WEP WPA WPA2

Submit?

Save

Correct Answer:



Access Point 1	Access Point 2	Access Point 3
IP Address: 192.168.100.151	IP Address: 192.168.100.152	IP Address: 192.168.100.153
Subnet CIDR: 24	Subnet CIDR: 24	Subnet CIDR: 24
Gateway: 192.168.100.1	Gateway: 192.168.100.1	Gateway: 192.168.100.1
SSID: CorpNET	SSID: CorpNET	SSID: CorpNET
Wireless Channel: 01	Wireless Channel: 06	Wireless Channel: 11
Speed: 100	Speed: 100	Speed: 100
Duplex: Full	Duplex: Full	Duplex: Full
Wireless Mode: G	Wireless Mode: G	Wireless Mode: G
Security Setting: WPA	Security Setting: WPA	Security Setting: WPA
Password: 123456789b	Password: 123456789b	Password: 123456789b
	Save	

OPTIONS

Note: Adjust the LEAST number of devices needed to fix the issue.

IP Addresses:

192.168.100.151 192.168.100.152

192.168.100.153 192.168.100.1

Wireless Name: CorpNET

New Router password: 123456789b

Available WiFi Channels:

01 02 03 04 05 06 07 08 09 10 11

CIDR Options:

24 25 26 27 28 29 30

WiFi Mode:

A B G N

Speed

Auto 100 1000

Duplex

Auto Half Full

Available Security Types:

OPEN WEP WPA WPA2

Submit?

Save

Section: (none)

Explanation

Explanation/Reference:

after you fix AP2, you must click on the switch, which will bring up the switch interface. Type in the two commands that they show there, to prove the fix. Do not worry that interface 4 is down, there is no interface 4 for you to do

QUESTION 5

A customer's email server is not sending emails. Arrange the troubleshooting steps in the order the technician should perform them:

Select and Place:

1	<input type="text"/>	Implement the solution
2	<input type="text"/>	Verify full system functionality
3	<input type="text"/>	Establish a theory of probable cause
4	<input type="text"/>	Determine if any recent changes have been made to the server
5	<input type="text"/>	Document findings, actions, and outcomes
6	<input type="text"/>	Establish a plan of action to resolve the problem
7	<input type="text"/>	Test the theory to determine cause
8	<input type="text"/>	Implement preventative measures

Correct Answer:

1	Determine if any recent changes have been made to the server	
2	Establish a theory of probable cause	
3	Test the theory to determine cause	
4	Establish a plan of action to resolve the problem	
5	Implement the solution	
6	Verify full system functionality	
7	Implement preventative measures	
8	Document findings, actions, and outcomes	

Section: (none)

Explanation

Explanation/Reference:

Exam A

QUESTION 1

A company installs a new mail server. Which of the following DNS records need to be configured to allow the organization to receive email?

- A. CNAME
- B. MX
- C. PTR
- D. A

Correct Answer: B

Section: (none)

Explanation

Explanation/Reference:

QUESTION 2

The administrator modifies a rule on the firewall, and now all the FTP users cannot access the server any longer. The manager calls the administrator and asks what caused the extreme downtime for the server. In regards to the manager's inquiry, which of the following did the administrator forget to do FIRST?

- A. Submit a change request
- B. Schedule a maintenance window
- C. Provide notification of change to users
- D. Document the changes

Correct Answer: A

Section: (none)

Explanation

Explanation/Reference:

QUESTION 3

A network administrator noticed that when one computer goes down, all the other computers in the office will not work. Which of the following topologies is in use?

- A. Star
- B. Ring
- C. Hybrid

- D. Bus
- E. Mesh

Correct Answer: D

Section: (none)

Explanation

Explanation/Reference:

QUESTION 4

There has been an increased amount of successful social engineering attacks at a corporate office. Which of the following will reduce this attack in the near future?

- A. Helpdesk training
- B. Appropriate use policy
- C. User awareness training
- D. Personal Identifiable Information

Correct Answer: C

Section: (none)

Explanation

Explanation/Reference:

QUESTION 5

The human resource department has been moved to an area which is more than 60 meters away from the nearest IDF. In order to comply with the SLA which requires that 10Gb speeds be provided, which of the following media will need to be utilized?



<http://www.gratisexam.com/>

- A. CAT6e
- B. CAT5e

- C. 802.11n
- D. 802.11ac

Correct Answer: A

Section: (none)

Explanation

Explanation/Reference:

QUESTION 6

While troubleshooting, a technician notices that some clients using FTP still work and that pings to the local router and servers are working. The technician tries to ping all known nodes on the network and they reply positively, except for one of the servers. The technician notices that ping works only when the host name is used but not when FQDN is used. Which of the following servers is MOST likely down?

- A. WINS server
- B. Domain controller
- C. DHCP server
- D. DNS server

Correct Answer: D

Section: (none)

Explanation

Explanation/Reference:

QUESTION 7

An area to which access is controlled by retina scan is protected by which of the following security measure types?

- A. Two-factor authentication
- B. Biometric
- C. Cipher locks
- D. Optical reader
- E. Proximity reader

Correct Answer: B

Section: (none)

Explanation

Explanation/Reference:

QUESTION 8

Which of the following ports should be allowed to provide access to certain VoIP applications?

- A. 110
- B. 139
- C. 1720
- D. 5060

Correct Answer: D

Section: (none)

Explanation

Explanation/Reference:

QUESTION 9

Which of the following should be used to ensure a specific device always receives the same IP address?

- A. IP helper
- B. Reservation
- C. Address lease
- D. DHCP scope
- E. DHCP relay

Correct Answer: B

Section: (none)

Explanation

Explanation/Reference:

QUESTION 10

Users connecting to an SSID appear to be unable to authenticate to the captive portal. Which of the following is the cause of this issue?

- A. WPA2 security key

- B. SSL certificates
- C. CSMA/CA
- D. RADIUS

Correct Answer: D

Section: (none)

Explanation

Explanation/Reference:

QUESTION 11

A company owns four kiosks that are in close proximity within a shopping center. The owner is concerned about someone accessing the internet via the kiosk's wireless network. Which of the following should be implemented to provide wireless access only to the employees working at the kiosk?

- A. Firewall
- B. Web filtering
- C. MAC filtering
- D. Host-based antivirus

Correct Answer: C

Section: (none)

Explanation

Explanation/Reference:

QUESTION 12

Which of the following applies to data as it travels from Layer 1 to Layer 7 of the OSI model?

- A. Tagging
- B. Encapsulation
- C. Tunneling
- D. De-encapsulation

Correct Answer: D

Section: (none)

Explanation

Explanation/Reference:

QUESTION 13

A T1 line has lost connectivity to the ISP. The ISP has instructed the technician to place a loopback on a device connecting the T1 line to their central office. On which of the following devices will the technician implement the loopback?



<http://www.gratisexam.com/>

- A. Channel remote module
- B. Fiber optic modem
- C. Channel service unit
- D. Digital subscriber line modem

Correct Answer: C

Section: (none)

Explanation

Explanation/Reference:

QUESTION 14

Routing prefixes which are assigned in blocks by IANA and distributed by the Regional Internet Registry (RIR) are known as which of the following?

- A. Network handle
- B. Autonomous system number
- C. Route aggregation
- D. Top level domain

Correct Answer: B

Section: (none)

Explanation

<http://www.gratisexam.com/>

Explanation/Reference:

QUESTION 15

QoS operates at which of the following OSI model layers? (Select TWO)

- A. Layer 1
- B. Layer 2
- C. Layer 3
- D. Layer 5
- E. Layer 7

Correct Answer: BC

Section: (none)

Explanation

Explanation/Reference:

QUESTION 16

A client reports that half of the marketing department is unable to access network resources. The technician determines that the switch has failed and needs to replace it. Which of the following would be the MOST helpful in regaining connectivity?

- A. VLAN configuration
- B. Network diagram
- C. Configuration backup
- D. Router image

Correct Answer: C

Section: (none)

Explanation

Explanation/Reference:

QUESTION 17

Ann, a system administrator, is troubleshooting an issue with a DNS server. She notices that the security logs have filled up and that they need to be cleared from the event viewer. She recalls this being a daily occurrence. Which of the following solutions would BEST resolve this problem?

- A. Increase the maximum log size
- B. Log into the DNS server every hour to check if the logs are full
- C. Install an event management tool
- D. Delete the logs when full

Correct Answer: C

Section: (none)

Explanation

Explanation/Reference:

QUESTION 18

Which of the following protocols were designed to avoid loops on a Layer 2 network? (Select TWO)

- A. OSPF
- B. RIPv2
- C. 802.1q
- D. Spanning tree
- E. 802.1d
- F. QoS

Correct Answer: DE

Section: (none)

Explanation

Explanation/Reference:

QUESTION 19

While implementing wireless access points into the network, one building is having connectivity issues due to light fixtures being replaced in the ceiling, while all other buildings' connectivity is performing as expected. Which of the following should be exchanged on the access points installed in the building with connectivity issues?

- A. UTP patch cables
- B. Antenna
- C. Power adapter
- D. Security standard

Correct Answer: B

Section: (none)

Explanation

Explanation/Reference:

QUESTION 20

A technician is attempting to resolve an issue with users on the network not being able to access websites. The technician pings the default gateway and DNS servers successfully. Pinging a website by URL is unsuccessful but using a known IP address is successful. Which of the following will resolve the issue?

- A. Update the HOST file with the URLs for all websites
- B. Use NSLOOKUP to resolve URLs
- C. Ensure ICMP messages can pass through the firewall
- D. Enable port 53 on the firewall

Correct Answer: D

Section: (none)

Explanation

Explanation/Reference:

QUESTION 21

The Chief Information Officer (CIO) of an organization is concerned that the current locally-hosted, software threat solution is not agile enough. The CIO points to specific examples of zero-day threats that have recently taken a day or more to receive patches. The IT team is tasked with finding a solution that has a better chance of stopping emerging threats and stopping zero-day threats more quickly. Which of the following solutions would have the BEST chance of meeting these goals?

- A. Stateful firewall
- B. Premise-based IDS
- C. Host-based IDS
- D. Cloud-based anti-malware

Correct Answer: A

Section: (none)

Explanation

Explanation/Reference:

QUESTION 22

A network technician was tasked to install a network printer and share it to a group of five human resource employees. The technician plugged the device into a LAN jack, but was unable to obtain an IP address automatically. Which of the following is the cause of the problem?



<http://www.gratisexam.com/>

- A. DNS
- B. Wrong TCP port
- C. Split horizon
- D. DHCP scope

Correct Answer: D

Section: (none)

Explanation

Explanation/Reference:

QUESTION 23

A technician is configuring a computer lab at a school. The computers need to be able to communicate with each other, but students using the computers should not be able to access the internet. Which of the following rules on the firewall should the technician configure for the lab computers?

- A. Block all LAN to LAN traffic
- B. Block all LAN to WAN traffic
- C. Block all WAN to LAN traffic
- D. Block all WLAN to WAN traffic

Correct Answer: C

Section: (none)

Explanation

<http://www.gratisexam.com/>

Explanation/Reference:

QUESTION 24

A network administrator is noticing slow responds times from the server to hosts on the network. After adding several new hosts, the administrator realizes that CSMA/CD results in network slowness due to congestion at the server NIC. Which of the following should the network administrator do to correct the issue?

- A. Add a honeypot to reduce traffic to the server
- B. Update the Ethernet drivers to use 802.3
- C. Add additional network cards to the server
- D. Disable CSMA/CD on the network

Correct Answer: C

Section: (none)

Explanation

Explanation/Reference:

QUESTION 25

A technician wants to update the organization's disaster recovery plans. Which of the following will allow network devices to be replaced quickly in the event of a device failure?

- A. Vendor documentation
- B. Archives/backups
- C. Proper asset tagging and labeling
- D. Network Baseline

Correct Answer: B

Section: (none)

Explanation

Explanation/Reference:

QUESTION 26

A user is unable to connect to a server in another building. A technician is troubleshooting the issue and determines the following:

- 1)Client PC 1 has an IP address if 192.168.10.25/25
- 2)PC 1 can successfully ping its gateway of 192.168.10.1/25 which is an interface of router A

3) Server A is named 'BLDGBFILESVR01' and has an IP address of 192.168.10.145/25

4) PC 2 with an IP address of 192.168.10.200/25 can successfully ping server A

However, when PC 1 pings server A, it receives a destination host unreachable response. Which of the following is the MOST likely cause?

- A. Link from router A to PC 1 are on different subnets
- B. Link from router A to server A is down
- C. Link from PC 1 to router A has duplex issues
- D. Link from server A to PC 2 is down

Correct Answer: A

Section: (none)

Explanation

Explanation/Reference:

QUESTION 27

A company is having a new T1 line installed. Which of the following will the connection MOST likely terminate to?

- A. Core switch
- B. MDF
- C. Ethernet router
- D. IDF

Correct Answer: B

Section: (none)

Explanation

Explanation/Reference:

QUESTION 28

A technician wants to implement a network for testing remote devices before allowing them to connect to the corporate network. Which of the following could the technician implement?

- A. High availability
- B. MAN network
- C. Quarantine
- D. Honeynet

Correct Answer: C

Section: (none)

Explanation

Explanation/Reference:

QUESTION 29

Which of the following broadband WAN technologies would MOST likely be used to connect several remote branches that have no fiber or satellite connections?

- A. OC12
- B. POTS
- C. WiMax
- D. OC3

Correct Answer: B

Section: (none)

Explanation

Explanation/Reference:

QUESTION 30

A technician is troubleshooting a PC that is having intermittent connectivity issues. The technician notices that the STP cables pairs are not completely twisted near the connector. Which of the following is the issue?

- A. Cross-talk
- B. 568A/568B mismatch
- C. Tx/Rx reverse
- D. Split pairs

Correct Answer: A

Section: (none)

Explanation

Explanation/Reference:

QUESTION 31

Which of the following can be issued from the command line to find the layer 3 hops to a remote destination?

- A. traceroute
- B. nslookup
- C. ping
- D. netstat

Correct Answer: A

Section: (none)

Explanation

Explanation/Reference:

QUESTION 32

A administrator's network has OSPF for the internal routing protocol and has two interfaces that continue to flap. The administrator reviews the following output:

Fast ethernet 0 is up, line protocol is up

Int ip address is 10.20.130.5/25

MTU 1500 bytes, BW10000 kbit, DLY 100 usec

Reliability 255/255, Tx load 1/255, Rx load 1/255

Encapsulation ospf, loopback not set

Keep alive 10

Full duplex, 100Mb/s, 100Base Tx/Fx

Received 1052993 broadcasts

1258 input errors

983881 packet output, 768588 bytes

1747 output errors, 0 collisions, 423 resets

Which of the following problems would cause the interface flap?

- A. Wrong IP address
- B. Loopback not set
- C. Bad wire
- D. Incorrect encapsulation
- E. Duplex mismatch

Correct Answer: E

Section: (none)

Explanation

Explanation/Reference:

QUESTION 33

Which of the following allows a telecommunication company to test circuits to customers remotely?

- A. VLAN
- B. toner probe
- C. RDP
- D. Smartjack
- E. VPN

Correct Answer: D

Section: (none)

Explanation

Explanation/Reference:

QUESTION 34

A single mode fiber is no longer providing network connectivity to a remote site. Which of the following would be used to identify the location of the break?

- A. MT-RJ
- B. OTDR
- C. Media converter
- D. Cable certifier

Correct Answer: B

Section: (none)

Explanation

Explanation/Reference:

QUESTION 35

Users are reporting extreme slowness across the network every Friday. Which of the following should the network technician review first to narrow down the root cause of the problem?

- A. Baseline
- B. Bottleneck
- C. Utilization
- D. Link status

Correct Answer: C

Section: (none)

Explanation

Explanation/Reference:

QUESTION 36

A contractor was hired to troubleshoot congestion issues on the network. After a few of the switches have been reconfigured/upgraded by the contractor, congestion worsens and collisions increase. Which of the following is the BEST action to alleviate the situation?

- A. Allow the contractor to reset switches to factory defaults
- B. Check the cabling on all switches for improper crossover use
- C. Document the changes that were made
- D. Downgrade firmware and restore backup configuration

Correct Answer: D

Section: (none)

Explanation

Explanation/Reference:

QUESTION 37

An organization is involved in a civil court action and needs to ensure email messages are retained. Which of the following describes the requirement to archive and retain email traffic and other correspondence?

- A. Chain of custody
- B. Legal hold
- C. Divide and conquer
- D. Persistent agents

Correct Answer: B

Section: (none)

Explanation**Explanation/Reference:****QUESTION 38**

In the past, a company has experienced several network breaches as a result of end-user actions. To help mitigate future breaches, which of the following documents should the security team ensure are up-to-date and enforced for all employees? (Select TWO)

- A. Memorandum of understanding
- B. Data classification document
- C. Service level agreement
- D. Interconnection security agreement
- E. Consent to monitor
- F. Acceptable use policy

Correct Answer: AF

Section: (none)

Explanation**Explanation/Reference:****QUESTION 39**

The Chief Information Officer (CIO) wants to improve the security of the company's data. Which of the following is a management control that should be implemented to ensure employees are using encryption to transmit sensitive information?

- A. Policies
- B. VPN
- C. HTTPS
- D. Standards

Correct Answer: A

Section: (none)

Explanation**Explanation/Reference:**

QUESTION 40

A client reports that half of the office is unable to access a shared resource. Which of the following should be used to troubleshoot the issue?

- A. Data backups
- B. Network diagrams
- C. Baseline information
- D. Vendor documentation

Correct Answer: B

Section: (none)

Explanation

Explanation/Reference:

QUESTION 41

An administrator needs to set up a space in the office where co-workers can relax. The administrator sets up several TV's with interconnected gaming systems in the office. Which of the following did the administrator set up?

- A. CAN
- B. MAN
- C. WAN
- D. LAN

Correct Answer: A

Section: (none)

Explanation

Explanation/Reference:

QUESTION 42

Channel bonding will improve which of the following wireless characteristics?

- A. Signal strength
- B. Encryption strength
- C. Coverage area
- D. Connection speed

Correct Answer: D

Section: (none)

Explanation

Explanation/Reference:

QUESTION 43

Users have reported poor network performance. A technician suspects a user may have maliciously flooded the network with ping request. Which of the following should the technician implement to avoid potential occurrences from happening in the future?

- A. Block all ICMP request
- B. Update all antivirus software
- C. Remove all suspected users from the network
- D. Upgrade firmware on all network cards

Correct Answer: A

Section: (none)

Explanation

Explanation/Reference:

QUESTION 44

A network technician is troubleshooting a network connection error, when pinging the default gateway no reply is received. The default gateway is found to be functioning properly but cannot connect to any workstations. At which of the following OSI layers could the problem exist? (Select TWO)

- A. Presentation
- B. Transport
- C. Session
- D. Data link
- E. Application
- F. Physical

Correct Answer: DF

Section: (none)

Explanation

Explanation/Reference:

QUESTION 45

A technician has determined the most likely cause of an issue and implement a solution. Which of the following is the NEXT step that should be taken?

- A. Document the findings, actions, and outcomes
- B. Duplicate the problem if possible
- C. Verify system functionality
- D. Make an archival backup

Correct Answer: C

Section: (none)

Explanation

Explanation/Reference:

QUESTION 46

An administrator has a physical server with a single NIC. The server needs to deploy two virtual machines. Each virtual machine needs two NIC's, one that connects to the network, and a second that is a server to server heartbeat connection between the two virtual machines. After deploying the virtual machines, which of the following should the administrator do to meet these requirements?

- A. The administrator should create a virtual switch for each guest. The switches should be configured for inter-switch links and the primary NIC should have a NAT to the corporate network
- B. The administrator should create a virtual switch that is bridged to the corporate network and a second virtual switch that carries intra-VM communication only
- C. The administrator should create a virtual switch to bridge all of the connections to the network. The virtual heartbeat NICs should be set to addresses in an unused range
- D. The administrator should install a second physical NIC onto the host, and then connect each guest machine's NICs to a dedicated physical NIC

Correct Answer: C

Section: (none)

Explanation

Explanation/Reference:

QUESTION 47

A network technician is asked to redesign an Ethernet network before new monitoring software is added to each host on the network. The new software will broadcast statistics from each host to a monitoring host for each of the five departments in the company. The added network traffic is a concern of management that must be addressed. Which of the following solutions should the technician design into the new network?

- A. Place each department in a separate VLAN
- B. Add a router and create a segment for all the monitoring host stations
- C. Increase the number of switches on the network to reduce broadcasts
- D. Increase the collision domain to compensate for the added broadcasts

Correct Answer: A

Section: (none)

Explanation

Explanation/Reference:

QUESTION 48

A company has added several new employees, which has caused the network traffic to increase by 200%. The network traffic increase from the new employees was only expected to be 20% to 30%. The administration suspects that the network may have been compromised. Which of the following should the network administrator have done previously to minimize the possibility of a network breach?

- A. Create VLANs to segment the network traffic
- B. Place a network sniffer on segments with new employees
- C. Provide end user awareness and training for employees
- D. Ensure best practices were implemented when creating new user accounts

Correct Answer: C

Section: (none)

Explanation

Explanation/Reference:

QUESTION 49

A network technician discovers an issue with spanning tree on the switch. Which of the following troubleshooting steps should the network technician perform NEXT to resolve the issue?

- A. Test a theory to determine the cause
- B. Escalate to a senior technician
- C. Identify the symptoms
- D. Establish a theory of probable cause

E. Establish a plan of action

Correct Answer: D

Section: (none)

Explanation

Explanation/Reference:

QUESTION 50

Which of the following would be the BEST addition to a business continuity plan that would protect business from a catastrophic event such as a fire, tornado, or earthquake?

- A. UPS and battery backups
- B. Fire suppression systems
- C. Building generator
- D. Hot sites or cold sites
- E. NAS and tape backups

Correct Answer: D

Section: (none)

Explanation

Explanation/Reference:

QUESTION 51

A network technician has created a network consisting of an external internet connection, a DMZ, an internal private network, and an administrative network. All routers and switches should be configured to accept SSH connections from which of the following network segments?



<http://www.gratisexam.com/>

- A. The internal network since it is private

- B. The admin private network allowing only admin access
- C. The DMZ only allowing access from the segment with the servers
- D. The internet connection to allow admin access from anywhere

Correct Answer: D

Section: (none)

Explanation

Explanation/Reference:

QUESTION 52

A network technician needs to monitor the network to find a user that is browsing inappropriate websites. Which of the following would the technician use to view the website and find the user browsing it?

- A. An SNMP GET
- B. A top listener tool
- C. An intrusion detection system
- D. A packet sniffer

Correct Answer: D

Section: (none)

Explanation

Explanation/Reference:

QUESTION 53

A network administrator receives a call asking for assistance with connecting to the network. The user asks for the IP address, subnet class, and VLAN required to access the network. This describes which of the following attacks?

- A. Social engineering
- B. Spoofing
- C. Zero-day attack
- D. VLAN hopping

Correct Answer: B

Section: (none)

Explanation

Explanation/Reference:

QUESTION 54

Which of the following cloud infrastructure designs includes on premise servers utilizing a centralized syslog server that is hosted at a third party organization for review?

- A. Hybrid
- B. Public
- C. Community
- D. Private

Correct Answer: A

Section: (none)

Explanation

Explanation/Reference:

QUESTION 55

A new threat is hiding traffic by sending TLS-encrypted traffic outbound over random ports. Which of the following technologies would be able to detect and block this traffic?

- A. Intrusion detection system
- B. Application aware firewall
- C. Stateful packet inspection
- D. Host-based antivirus

Correct Answer: C

Section: (none)

Explanation

Explanation/Reference:

QUESTION 56

The network administrator is configuring a switch port for a file server with a dual NIC. The file server needs to be configured for redundancy and both ports on the NIC need to be combined for maximum throughput. Which of the following features on the switch should the network administrator use?

- A. BPDU
- B. LACP
- C. Spanning tree
- D. Load balancing

Correct Answer: B

Section: (none)

Explanation

Explanation/Reference:

QUESTION 57

A network technician is using telnet to connect to a router on a network that has been compromised. A new user and password has been added to the router with full rights. The technician is concerned that the regularly used administrator account has been compromised. After changing the password on all networking devices, which of the following should the technician perform to prevent the password for the administrator account from being sniffed on the network?

- A. Use SNMPv1 for all configurations involving the router
- B. Ensure the password is 10 characters, containing letter and numbers
- C. Copy all configurations to routers using TFTP for security
- D. Only allow administrators to access routers using port 22

Correct Answer: D

Section: (none)

Explanation

Explanation/Reference:

QUESTION 58

A network technician has configured a point-to-point interface on a router, however, once the fiber optic cables have been run, the interface will not come up. The technician has cleaned the fiber connectors and used an optical power meter to confirm that light is passing in both directions without excessive loss. Which of the following is the MOST likely cause?

- A. Distance limitation
- B. Wavelength mismatch
- C. cross-talk
- D. EMI

E. Macro bend

Correct Answer: B

Section: (none)

Explanation

Explanation/Reference:

QUESTION 59

A network administrator wants to deploy a wireless network in a location that has too much RF interference at 2.4 GHz. Which of the following standards requires the use of 5 GHz band wireless transmissions? (Select TWO)

- A. 802.11a
- B. 802.11ac
- C. 802.11b
- D. 802.11g
- E. 802.11n

Correct Answer: AB

Section: (none)

Explanation

Explanation/Reference:

QUESTION 60

Upon arrival at work, an administrator is informed that network users cannot access the file server. The administrator logs onto the server and sees the updates were automatically installed and the network connection shows limited and no availability. Which of the following needs to be rolled back?

- A. The browser on the server
- B. The server's NIC drivers
- C. The server's IP address
- D. The antivirus updates

Correct Answer: B

Section: (none)

Explanation

Explanation/Reference:

Exam B

QUESTION 1

Before logging into the company network, users are required to sign a document that is to be stored in their personnel file. This standards and policies document is usually called which of the following?

- A. SOP
- B. BEP
- C. AUP
- D. SLA

Correct Answer: C

Section: (none)

Explanation

Explanation/Reference:

QUESTION 2

A network technician has set up an FTP server for the company to distribute software updates for their products. Each vendor is provided with a unique username and password for security. Several vendors have discovered a virus in one of the security updates. The company tested all files before uploading them but retested the file and found the virus. Which of the following could the technician do for vendors to validate the proper security patch?

- A. Use TFTP for tested and secure downloads
- B. Require biometric authentication for patch updates
- C. Provide an MD5 hash for each file
- D. Implement a RADIUS authentication

Correct Answer: C

Section: (none)

Explanation

Explanation/Reference:

QUESTION 3

A technician wants to securely manage several remote network devices. Which of the following should be implemented to securely manage the devices?

- A. WPA2

- B. IPv6
- C. SNMPv3
- D. RIPv2

Correct Answer: C

Section: (none)

Explanation

Explanation/Reference:

QUESTION 4

A PC technician has installed a new network printer that was preconfigured with the correct static IP address, subnet mask, and default gateway. The printer was installed with a new cable and appears to have link activity, but the printer will not respond to any network communication attempts. Which of the following is MOST likely the cause of the problem?

- A. Damaged cable
- B. Duplex mismatch
- C. Incorrect VLAN assignment
- D. Speed mismatch

Correct Answer: C

Section: (none)

Explanation

Explanation/Reference:

QUESTION 5

A network technician has detected duplicate IP addresses on the network. After testing the behavior of rogue DHCP servers, the technician believes that the issue is related to an unauthorized home router. Which of the following should the technician do NEXT in the troubleshooting methodology?

- A. Document the findings and action taken.
- B. Establish a plan to locate the rogue DHCP server.
- C. Remove the rogue DHCP server from the network.
- D. Identify the root cause of the problem.

Correct Answer: B

Section: (none)

Explanation

Explanation/Reference:

QUESTION 6

Two weeks after installation, a network technician is now unable to log onto any of the newly installed company switches. The technician suspects that a malicious user may have changed the switches' settings before they were installed in secure areas. Which of the following is the MOST likely way in which the malicious user gained access to the switches?

- A. Via SSH using the RADIUS shared secret
- B. Via HTTP using the default username and password
- C. Via console using the administrator's password
- D. Via SNMP using the default RO community

Correct Answer: B

Section: (none)

Explanation

Explanation/Reference:

QUESTION 7

When a client calls and describes a problem with a computer not being able to reach the Internet, in which of the following places of the OSI model would a technician begin troubleshooting?

- A. Transport layer
- B. Physical layer
- C. Network layer
- D. Session layer

Correct Answer: B

Section: (none)

Explanation

Explanation/Reference:

QUESTION 8

A network technician has been assigned to install an additional router on a wireless network. The router has a different SSID and frequency. All users on the new

access point and the main network can ping each other and utilize the network printer, but all users on the new router cannot get to the Internet. Which of the following is the MOST likely cause of this issue?

- A. The gateway is misconfigured on the new router.
- B. The subnet mask is incorrect on the new router.
- C. The gateway is misconfigured on the edge router.
- D. The SSID is incorrect on the new router.

Correct Answer: A

Section: (none)

Explanation

Explanation/Reference:

QUESTION 9

While troubleshooting a network outage, a technician finds a 100-meter fiber cable with a small service loop and suspects it might be the cause of the outage. Which of the following is MOST likely the issue?

- A. Maximum cable length exceeded
- B. Dirty connectors
- C. RF interference caused by impedance mismatch
- D. Bend radius exceeded

Correct Answer: D

Section: (none)

Explanation

Explanation/Reference:

QUESTION 10

A technician is troubleshooting a wired device on the network. The technician notices that the link light on the NIC does not illuminate. After testing the device on a different RJ-45 port, the device connects successfully. Which of the following is causing this issue?

- A. EMI
- B. RFI
- C. Cross-talk
- D. Bad wiring

Correct Answer: D

Section: (none)

Explanation

Explanation/Reference:

QUESTION 11

An organization requires a second technician to verify changes before applying them to network devices. When checking the configuration of a network device, a technician determines that a coworker has improperly configured the AS number on the device. This would result in which of the following?



<http://www.gratisexam.com/>

- A. The OSPF not-so-stubby area is misconfigured
- B. Reduced wireless network coverage
- C. Spanning tree ports in flooding mode
- D. BGP routing issues

Correct Answer: D

Section: (none)

Explanation

Explanation/Reference:

QUESTION 12

When configuring a new server, a technician requests that an MX record be created in DNS for the new server, but the record was not entered properly. Which of the following was MOST likely installed that required an MX record to function properly?

- A. Load balancer
- B. FTP server
- C. Firewall DMZ

D. Mail server

Correct Answer: D

Section: (none)

Explanation

Explanation/Reference:

QUESTION 13

A company has had several virus infections over the past few months. The infections were caused by vulnerabilities in the application versions that are being used. Which of the following should an administrator implement to prevent future outbreaks?

- A. Host-based intrusion detection systems
- B. Acceptable use policies
- C. Incident response team
- D. Patch management

Correct Answer: D

Section: (none)

Explanation

Explanation/Reference:

QUESTION 14

A user calls the help desk and states that he was working on a spreadsheet and was unable to print it. However, his colleagues are able to print their documents to the same shared printer. Which of the following should be the FIRST question the helpdesk asks?

- A. Does the printer have toner?
- B. Are there any errors on the printer display?
- C. Is the user able to access any network resources?
- D. Is the printer powered up?

Correct Answer: C

Section: (none)

Explanation

Explanation/Reference:

QUESTION 15

A network technician is using a network monitoring system and notices that every device on a particular segment has lost connectivity. Which of the following should the network technician do NEXT?

- A. Establish a theory of probable cause.
- B. Document actions and findings.
- C. Determine next steps to solve the problem.
- D. Determine if anything has changed.

Correct Answer: D

Section: (none)

Explanation

Explanation/Reference:

QUESTION 16

A technician just completed a new external website and setup access rules in the firewall. After some testing, only users outside the internal network can reach the site. The website responds to a ping from the internal network and resolves the proper public address. Which of the following could the technician do to fix this issue while causing internal users to route to the website using an internal address?

- A. Configure NAT on the firewall
- B. Implement a split horizon DNS
- C. Place the server in the DMZ
- D. Adjust the proper internal ACL

Correct Answer: B

Section: (none)

Explanation

Explanation/Reference:

QUESTION 17

A network administrator recently installed a web proxy server at a customer's site. The following week, a system administrator replaced the DNS server overnight. The next day, customers began having issues accessing public websites. Which of the following will resolve the issue?

- A. Update the DNS server with the proxy server information.
- B. Implement a split horizon DNS server.
- C. Reboot the web proxy and then reboot the DNS server.
- D. Put the proxy server on the other side of the demarc.

Correct Answer: A

Section: (none)

Explanation

Explanation/Reference:

QUESTION 18

While troubleshooting a connectivity issue, a network technician determines the IP address of a number of workstations is 169.254.0.0/16 and the workstations cannot access the Internet. Which of the following should the technician check to resolve the problem?

- A. Default gateway address
- B. Misconfigured DNS
- C. DHCP server
- D. NIC failure

Correct Answer: C

Section: (none)

Explanation

Explanation/Reference:

QUESTION 19

A technician recently ran a 20-meter section of CAT6 to relocate a control station to a more central area on the production floor. Since the relocation, the helpdesk has received complaints about intermittent operation. During the troubleshooting process, the technician noticed that collisions are only observed on the switch port during production. Given this information, which of the following is the cause of the problem?

- A. Distance limitation
- B. Electromagnetic interference
- C. Cross talk
- D. Speed and duplex mismatch

Correct Answer: B

Section: (none)

Explanation

Explanation/Reference:

QUESTION 20

A technician has finished configuring AAA on a new network device. However, the technician is unable to log into the device with LDAP credentials but is able to do so with a local user account. Which of the following is the MOST likely reason for the problem?

- A. Username is misspelled in the device configuration file
- B. IDS is blocking RADIUS
- C. Shared secret key is mismatched
- D. Group policy has not propagated to the device

Correct Answer: C

Section: (none)

Explanation

Explanation/Reference:

QUESTION 21

A technician is tasked with connecting a router to a DWDM. The technician connects the router to the multiplexer and confirms that there is a good signal level. However, the interface on the router will not come up. Which of the following is the MOST likely cause?

- A. The wrong wavelength was demuxed from the multiplexer.
- B. The SFP in the multiplexer is malfunctioning.
- C. There is a dirty connector on the fiber optic cable.
- D. The fiber optic cable is bent in the management tray.

Correct Answer: A

Section: (none)

Explanation

Explanation/Reference:

QUESTION 22

A network technician is performing a tracert command to troubleshoot a website-related issue. The following output is received for each hop in the tracert:

```
1 * * * Request timed out.  
2 * * * Request timed out.  
3 * * * Request timed out.
```

The technician would like to see the results of the tracert command. Which of the following will allow the technician to perform tracert on external sites but not allow outsiders to discover information from inside the network?

- A. Enable split horizon to allow internal tracert commands to pass through the firewall
- B. Enable IGMP messages out and block IGMP messages into the network
- C. Configure the firewall to allow echo reply in and echo request out of the network
- D. Install a backdoor to access the router to allow tracert messages to pass through

Correct Answer: C

Section: (none)

Explanation

Explanation/Reference:

QUESTION 23

Which of the following describes an area containing a rack that is used to connect customer equipment to a service provider?

- A. 110 block
- B. MDF
- C. DSU
- D. CSU

Correct Answer: B

Section: (none)

Explanation

Explanation/Reference:

QUESTION 24

A network technician must utilize multimode fiber to uplink a new networking device. Which of the following Ethernet standards could the technician utilize? (Select TWO).

- A. 1000Base-LR
- B. 1000Base-SR
- C. 1000Base-T
- D. 10GBase-LR
- E. 10GBase-SR
- F. 10GBase-T

Correct Answer: BE

Section: (none)

Explanation

Explanation/Reference:

QUESTION 25

A network administrator is using a packet analyzer to determine an issue on the local LAN. Two separate computers are showing an error message on the screen and are unable to communicate with other computers in the same lab. The network administrator looks at the following output:

```
SRC MAC SRC IP DST MAC DST IP
00:1D:1F:AB:10:7D 192.168.1.10:2000 15:BE:9F:AB:10:1D 192.168.1.14:1200
05:DD:1F:AB:10:27 192.168.1.10:1000 22:C7:2F:AB:10:A2 192.168.1.15:1300
```

Given that all the computers in the lab are directly connected to the same switch, and are not using any virtualization technology, at which of the following layers of the OSI model is the problem occurring?

- A. Network
- B. Application
- C. Data link
- D. Transport

Correct Answer: A

Section: (none)

Explanation

Explanation/Reference:

QUESTION 26

Which of the following requires the network administrator to schedule a maintenance window?

- A. When a company-wide email notification must be sent.
- B. A minor release upgrade of a production router.
- C. When the network administrator's laptop must be rebooted.
- D. A major release upgrade of a core switch in a test lab.

Correct Answer: B

Section: (none)

Explanation

Explanation/Reference:

QUESTION 27

Which of the following is true about the main difference between a web session that uses port 80 and one that uses port 443?

- A. Port 80 web sessions often use application-level encryption, while port 443 sessions often use transport-level encryption.
- B. Port 80 web session cannot use encryption, while port 443 sessions are encrypted using web certificates.
- C. Port 80 web sessions can use web application proxies, while port 443 sessions cannot traverse web application proxies.
- D. Port 80 web sessions are prone to man-in-the-middle attacks, while port 443 sessions are immune from man-in-the-middle attacks.

Correct Answer: A

Section: (none)

Explanation

Explanation/Reference:

QUESTION 28

The management team wants to set up a wireless network in their office but all of their phones operate at the 2.4 GHz frequency. They need a wireless network that would be able to operate at a higher frequency than their phones. Which of following standards should be used?

- A. 802.11a
- B. 802.11b
- C. 802.11g
- D. 802.1x

Correct Answer: A

Section: (none)

Explanation

Explanation/Reference:

QUESTION 29

Which of the following will negotiate standoff timers to allow multiple devices to communicate on congested network segments?

- A. CSMA/CD
- B. OSPF
- C. DOCSIS
- D. BGP

Correct Answer: A

Section: (none)

Explanation

Explanation/Reference:

QUESTION 30

A service provider is unable to maintain connectivity to several remote sites at predetermined speeds. The service provider could be in violation of the:

- A. MLA.
- B. SLA.
- C. SOW.
- D. MOU.

Correct Answer: B

Section: (none)

Explanation

Explanation/Reference:

QUESTION 31

A network administrator has created a virtual machine in the cloud. The technician would like to connect to the server remotely using RDP. Which of the following default ports needs to be opened?

- A. 445
- B. 3389
- C. 5004
- D. 5060

Correct Answer: B

Section: (none)

Explanation

Explanation/Reference:

QUESTION 32

Which of the following is an example of an IPv4 address?

- A. 192:168:1:55
- B. 192.168.1.254
- C. 00:AB:FA:B1:07:34
- D. ::1

Correct Answer: B

Section: (none)

Explanation

Explanation/Reference:

QUESTION 33

Which of the following does a network technician need to implement if a change is unsuccessful within the approved maintenance window?

- A. Configuration procedures
- B. Stakeholder notification
- C. Impact analysis
- D. Rollback procedure

Correct Answer: D

Section: (none)

Explanation**Explanation/Reference:****QUESTION 34**

Which of the following is the main difference between TCP and UDP?

- A. TCP data flows in two directions, while UDP data flows from server to client.
- B. The TCP header implements flags, while the UDP header does not.
- C. The TCP header implements checksum, while the UDP header does not.
- D. TCP connections can be secured by stateful firewalls, while UDP connections cannot.

Correct Answer: B

Section: (none)

Explanation**Explanation/Reference:****QUESTION 35**

Which of the following PDUs is used by a connectionless protocol?

- A. Frames
- B. Segments
- C. Streams
- D. Datagram

Correct Answer: D

Section: (none)

Explanation**Explanation/Reference:****QUESTION 36**

When troubleshooting a network problem, browsing through the log of a switch, it is discovered that multiple frames contain errors. In which of the following layers does the problem reside? (Select TWO).

- A. Layer 2
- B. Layer 3
- C. Layer 5
- D. Transport layer
- E. Data link
- F. Physical layer

Correct Answer: AE

Section: (none)

Explanation

Explanation/Reference:

QUESTION 37

A network technician is attempting to locate a switch connected to the fourth floor west side of the building. Which of the following will allow quick identification of the switch, when looking at a logical diagram?

- A. Building layout
- B. Patch panel labeling
- C. Packet sniffing
- D. Naming conventions

Correct Answer: D

Section: (none)

Explanation

Explanation/Reference:

QUESTION 38

In an engineering office, all plotters are configured via static IP. Which of the following best practices will alleviate many issues if equipment moves are required? (Select TWO).

- A. Rack monitoring
- B. Device placement
- C. Wall plate labeling
- D. Room numbering

E. Patch panel labeling

Correct Answer: CE

Section: (none)

Explanation

Explanation/Reference:

QUESTION 39

Which of the following devices implements CSMA/CA virtually through the RTS/CTS protocols?

- A. Firewall
- B. Router
- C. 802.11 AP
- D. Switch

Correct Answer: C

Section: (none)

Explanation

Explanation/Reference:

QUESTION 40

A user with a 802.11n WLAN card is connected to a SOHO network and is only able to connect at 11 Mbps with full signal strength. Which of the following standards is implemented on the network?

- A. 802.11a
- B. 802.11ac
- C. 802.11b
- D. 802.11g

Correct Answer: C

Section: (none)

Explanation

Explanation/Reference:

QUESTION 41

A network technician is attempting to connect a new host to existing manufacturing equipment on an Ethernet network. The technician is having issues trying to establish communication between the old equipment and the new host. The technician checks the cabling for breaks and finds that the CAT3 cable in use is in perfect condition. Which of the following should the technician check to ensure the new host will connect?

- A. Confirm the new host is using 10GBaseSR due to the manufacturing environment
- B. Confirm the new host is compatible with 10BaseT Ethernet
- C. Confirm the existing 10Base2 equipment is using the proper frame type
- D. Confirm that CSMA/CD is disabled on the Ethernet network

Correct Answer: B

Section: (none)

Explanation

Explanation/Reference:

QUESTION 42

A customer has engaged a company to improve the availability of all of the customer's services and applications, enabling the customer to minimize downtime to a few hours per quarter. Which of the following will document the scope of the activities the company will provide to the customer, including the intended outcomes?

- A. MLA
- B. MOU
- C. SOW
- D. SLA

Correct Answer: C

Section: (none)

Explanation

Explanation/Reference:

QUESTION 43

A network technician has just installed a TFTP server on the administrative segment of the network to store router and switch configurations. After a transfer attempt to the server is made, the process errors out. Which of the following is a cause of the error?

- A. Only FTP can be used to copy configurations from switches

- B. Anonymous users were not used to log into the TFTP server
- C. An incorrect password was used and the account is now locked
- D. Port 69 is blocked on a router between the network segments

Correct Answer: D

Section: (none)

Explanation

Explanation/Reference:

QUESTION 44

An organization is moving to a new datacenter. During the move, several technicians raise concerns about a system that could potentially remove oxygen from the server room and result in suffocation. Which of the following systems are they MOST likely discussing?

- A. Fire suppression
- B. Mantraps at the entry
- C. HVAC
- D. UPS and battery backups

Correct Answer: A

Section: (none)

Explanation

Explanation/Reference:

QUESTION 45

A technician, Joe, needs to troubleshoot a recently installed NIC. He decides to ping the local loopback address. Which of the following is a valid IPv4 loopback address?

- A. 10.0.0.1
- B. 127.0.0.1
- C. 172.16.1.1
- D. 192.168.1.1

Correct Answer: B

Section: (none)

Explanation

Explanation/Reference:

QUESTION 46

A host has been assigned the address 169.254.0.1. This is an example of which of the following address types?

- A. APIPA
- B. MAC
- C. Static
- D. Public

Correct Answer: A

Section: (none)

Explanation

Explanation/Reference:

QUESTION 47

An F-connector is used on which of the following types of cabling?

- A. CAT3
- B. Single mode fiber
- C. CAT5
- D. RG6

Correct Answer: D

Section: (none)

Explanation

Explanation/Reference:

QUESTION 48

After repairing a computer infected with malware, a technician determines that the web browser fails to go to the proper address for some sites. Which of the following should be checked?

- A. Server host file

- B. Subnet mask
- C. Local hosts file



<http://www.gratisexam.com/>

- D. Duplex settings

Correct Answer: C

Section: (none)

Explanation

Explanation/Reference:

QUESTION 49

A company wants to make sure that users are required to authenticate prior to being allowed on the network. Which of the following is the BEST way to accomplish this?

- A. 802.1x
- B. 802.1p
- C. Single sign-on
- D. Kerberos

Correct Answer: A

Section: (none)

Explanation

Explanation/Reference:

QUESTION 50

A technician, Joe, has been tasked with assigning two IP addresses to WAN interfaces on connected routers. In order to conserve address space, which of the following subnet masks should Joe use for this subnet?

- A. /24
- B. /32
- C. /28
- D. /29
- E. /30

Correct Answer: E

Section: (none)

Explanation

Explanation/Reference:

QUESTION 51

Joe, a network technician, is setting up a DHCP server on a LAN segment. Which of the following options should Joe configure in the DHCP scope, in order to allow hosts on that LAN segment using dynamic IP addresses, to be able to access the Internet and internal company servers? (Select THREE).

- A. Default gateway
- B. Subnet mask
- C. Reservations
- D. TFTP server
- E. Lease expiration time of 1 day
- F. DNS servers
- G. Bootp

Correct Answer: ABF

Section: (none)

Explanation

Explanation/Reference:

QUESTION 52

An administrator only has telnet access to a remote workstation. Which of the following utilities will identify if the workstation uses DHCP?

- A. tracer
- B. ping
- C. dig

- D. ipconfig
- E. netstat

Correct Answer: D

Section: (none)

Explanation

Explanation/Reference:

QUESTION 53

Which of the following protocols uses label-switching routers and label-edge routers to forward traffic?

- A. BGP
- B. OSPF
- C. IS-IS
- D. MPLS

Correct Answer: D

Section: (none)

Explanation

Explanation/Reference:

QUESTION 54

A network technician has received a help desk ticket indicating that after the new wireless access point was installed, all of the media department's devices are experiencing sporadic wireless connectivity. All other departments are connecting just fine and the settings on the new access point were copied from the baseline. Which of the following is a reason why the media department is not connecting?

- A. Wrong SSID
- B. Rogue access point
- C. Placement
- D. Channel mismatch

Correct Answer: C

Section: (none)

Explanation

Explanation/Reference:

QUESTION 55

A user connects to a wireless network at the office and is able to access unfamiliar SMB shares and printers. Which of the following has happened to the user?

- A. The user is connected using the wrong channel.
- B. The user is connected to the wrong SSID.
- C. The user is experiencing an EMI issue.
- D. The user is connected to the wrong RADIUS server.

Correct Answer: B

Section: (none)

Explanation

Explanation/Reference:

QUESTION 56

Which of the following network devices use ACLs to prevent unauthorized access into company systems?

- A. IDS
- B. Firewall
- C. Content filter
- D. Load balancer

Correct Answer: B

Section: (none)

Explanation

Explanation/Reference:

QUESTION 57

Ann, a user, is experiencing an issue with her wireless device. While in the conference area, the wireless signal is steady and strong. However, at her desk the signal is consistently dropping, yet the device indicates a strong signal. Which of the following is the MOST likely cause of the issue?

- A. Signal-to-noise ratio
- B. AP configuration

- C. Incorrect SSID
- D. Bounce

Correct Answer: D

Section: (none)

Explanation

Explanation/Reference:

QUESTION 58

A network engineer is troubleshooting an issue with a computer that is unable to connect to the Internet. The network engineer analyzes the following output from a command line utility:

```
Network Destination Netmask Gateway Interface
192.168.1.0 255.255.255.0 192.168.1.254 eth0
192.168.1.10 255.255.255.255 192.168.1.10 eth0
127.0.0.1 255.0.0.0 On-Link lo
127.0.0.0 255.0.0.0 On-Link lo
255.255.255.255 255.255.255.255 102.168.1.10 eth0
```

Which of the following is the reason for the computer issue, given the above output?

- A. Wrong default gateway netmask
- B. Incorrect default gateway address
- C. Default gateway on the wrong interface
- D. Missing default gateway

Correct Answer: D

Section: (none)

Explanation

Explanation/Reference:

QUESTION 59

A network engineer is dispatched to an employee office to troubleshoot an issue with the employee's laptop. The employee is unable to connect to local and remote resources. The network engineer flips the laptop's wireless switch on to resolve the issue. At which of the following layers of the OSI model was the issue resolved?

- A. Layer 1

- B. Layer 2
- C. Layer 3
- D. Layer 4
- E. Layer 7

Correct Answer: A

Section: (none)

Explanation

Explanation/Reference:

QUESTION 60

A network technician has received comments from several users that cannot reach a particular website. Which of the following commands would provide the BEST information about the path taken across the network to this website?

- A. ping
- B. netstat
- C. telnet
- D. tracer

Correct Answer: D

Section: (none)

Explanation

Explanation/Reference:

QUESTION 61

A network technician has detected a personal computer that has been physically connected to the corporate network. Which of the following commands would the network technician use to locate this unauthorized computer and determine the interface it is connected to?

- A. nbtstat a
- B. show mac address-table
- C. show interface status
- D. show ip access-list
- E. nslookup hostname

Correct Answer: B

Section: (none)

Explanation

Explanation/Reference:

QUESTION 62

A network technician is troubleshooting a problem at a remote site. It has been determined that the connection from router A to router B is down. The technician at the remote site re-terminates the CAT5 cable that connects the two routers as a straight through cable. The cable is then tested and is plugged into the correct interface. Which of the following would be the result of this action?

- A. The normal amount of errors and the connection problem has been resolved.
- B. The interface status will indicate that the port is administratively down.
- C. The traffic will flow, but with excessive errors.
- D. The interface status will show line protocol down.

Correct Answer: D

Section: (none)

Explanation

Explanation/Reference:

QUESTION 63

After connecting a workstation directly to a small business firewall, a network administrator is trying to manage it via HTTPS without losing its stored configuration. The only two pieces of information that the network administrator knows about the firewall are the management interface MAC address, which is 01:4a:d1:fa:b1:0e, and the administrator's password. Which of the following will allow the administrator to log onto the firewall via HTTPS if the management's IP address is unknown and the administrator's workstation IP address is 192.168.0.10/23?

- A. Use the reset button on the back of the firewall to restore it to its factory default, and then log onto
- B. Run the following command on the administrator's workstation: `arp s 192.168.1.200 01:4a:d1:fa:b1:0e`
- C. Use an SNMP tool to query the firewall properties and determine the correct management IP address
- D. Use a crossover cable to connect to the console port and reconfigure the firewall management IP to 192.168.0.1

Correct Answer: B

Section: (none)

Explanation

Explanation/Reference:

QUESTION 64

Which of the following connection types is used to terminate DS3 connections in a telecommunications facility?

- A. 66 block
- B. BNC
- C. F-connector
- D. RJ-11

Correct Answer: B

Section: (none)

Explanation

Explanation/Reference:

QUESTION 65

A desktop computer is connected to the network and receives an APIPA address but is unable to reach the VLAN gateway of 10.10.100.254. Other PCs in the VLAN subnet are able to reach the Internet. Which of the following is MOST likely the source of the problem?

- A. 802.1q is not configured on the switch port
- B. APIPA has been misconfigured on the VLAN
- C. Bad SFP in the PC's 10/100 NIC
- D. OS updates have not been installed

Correct Answer: A

Section: (none)

Explanation

Explanation/Reference:

Exam C

QUESTION 1

Routing prefixes which are assigned in blocks by IANA and distributed by the Regional Internet Registry (RIR) are known as which of the following?

- A. Network handle
- B. Autonomous system number
- C. Router aggregation
- D. Top level domain

Correct Answer: B

Section: (none)

Explanation

Explanation/Reference:

QUESTION 2

A network technician is troubleshooting a network connection error when pinging the default gateway no reply is received. The default gateway is found to be functioning properly but cannot connect to any workstations. At which of the following OSI layers could the problem exist? (Select TWO)

- A. Presentation
- B. Transport
- C. Session
- D. Data link
- E. Application
- F. Physical

Correct Answer: DF

Section: (none)

Explanation

Explanation/Reference:

QUESTION 3

An administrator needs to set up a space in the office where co-workers can relax. The administrator sets up several TVs with interconnected gaming systems in the office. Which of the following did the administrator set up?

- A. CAN
- B. MAN
- C. WAN
- D. LAN

Correct Answer: A

Section: (none)

Explanation

Explanation/Reference:

QUESTION 4

Which of the following applies to data as it travels from Layer 1 to Layer 7 of the OSI model?

- A. Tagging
- B. Encapsulation
- C. Tunneling
- D. De-encapsulation

Correct Answer: D

Section: (none)

Explanation

Explanation/Reference:

QUESTION 5

Which of the following ports should be allowed to provide access to certain VoIP applications?



<http://www.gratisexam.com/>

- A. 110

- B. 139
- C. 1720
- D. 5060

Correct Answer: D

Section: (none)

Explanation

Explanation/Reference:

QUESTION 6

A technician has determined the most likely cause of an issue and implemented a solution. Which of the following is the NEXT step that should be taken?

- A. Document findings, actions and outcomes
- B. Duplicate the problem if possible
- C. Verify system functionality
- D. Make an archival backup

Correct Answer: C

Section: (none)

Explanation

Explanation/Reference:

QUESTION 7

A technician who is working with a junior member of the team is called away for another issue. The junior technician orders an SC 80/125 fiber cable instead of an ST 80/125. Which of the following will MOST likely be an issue with the new cable?

- A. Wavelength mismatch
- B. Distance limitations
- C. Connector mismatch
- D. Attenuation/Db loss:

Correct Answer: C

Section: (none)

Explanation

Explanation/Reference:

QUESTION 8

A network technician has created a network consisting of an external internet connection, a DMZ, an internal private network, and an administrative network. All routers and switches should be configured to accept SSH connections from which of the following network segments?

- A. The internal network since it is private
- B. The admin private network allowing only admin access
- C. The DMZ allowing access from the segment with the servers
- D. The internet connection to allow admin access from anywhere

Correct Answer: D

Section: (none)

Explanation

Explanation/Reference:

QUESTION 9

Which of the following is a document that is used in cyber forensics that lists everywhere evidence has been?

- A. Warrant
- B. Legal document
- C. Chain of custody
- D. Forensic report
- E. Documentation of the scene

Correct Answer: C

Section: (none)

Explanation

Explanation/Reference:

QUESTION 10

A technician is troubleshooting a PC that is having intermittent connectivity issues. The technician notices that the STP cable pairs are not completely twisted near the connector. Which of the following is the issue?

- A. Cross-talk
- B. 568A/568B mismatch
- C. Tx/Rx reverse
- D. Split Pairs

Correct Answer: A

Section: (none)

Explanation

Explanation/Reference:

QUESTION 11

A network owns four kiosks that are in close proximity within a shopping center. The owner is concerned about someone accessing the internet via the kiosk's wireless network. Which of the following should be implemented to provide wireless access only to the employees working at the kiosk?

- A. Firewall
- B. Web Filtering
- C. MAC Filtering
- D. Host-based Antivirus

Correct Answer: C

Section: (none)

Explanation

Explanation/Reference:

QUESTION 12

A network technician needs to protect IP based servers in the network DMZ from being discovered by an intruder utilizing a ping sweep. Which of the following should the technician do to protect the network from ping sweeps?



<http://www.gratisexam.com/>

- A. Block echo replies inbound to the DMZ
- B. Disable UDP on the servers
- C. Block ICMP at the firewall
- D. Disable TCP/IP on the servers

Correct Answer: C

Section: (none)

Explanation

Explanation/Reference:

QUESTION 13

A new threat is hiding traffic by sending TLS encrypted traffic outbound over random ports. Which of the following technologies would be able to detect and block this traffic?

- A. Intrusion detection system
- B. Application aware firewall
- C. Stateful packet inspection
- D. Host based antivirus

Correct Answer: C

Section: (none)

Explanation

Explanation/Reference:

QUESTION 14

Which of the following should be used to ensure a specific device always receives the same IP address?

- A. IP helper
- B. Reservation
- C. Address lease
- D. DHCP scope
- E. DHCP relay

Correct Answer: B

Section: (none)

Explanation

Explanation/Reference:

QUESTION 15

A technician is attempting to resolve an issue with users on the network not being able to access websites. The technician pings the default gateway and DNS servers successfully. Pinging a website by URL is unsuccessful but using a known IP address is successful> Which of the following will resolve the issue?

- A. Update the HOST file with the URL's for all websites
- B. Use NSLOOKUP to resolve URLs
- C. Ensure ICMP messages can pass through the firewall
- D. Enable port 53 on the firewall

Correct Answer: D

Section: (none)

Explanation

Explanation/Reference:

QUESTION 16

A technician wants to implement a network for testing remote devices before allowing them to connect to the corporate network. Which of the following should the technician implement?

- A. High availability
- B. MAN network
- C. Quarantine
- D. Honeypot

Correct Answer: C

Section: (none)

Explanation

Explanation/Reference:

QUESTION 17

QoS operates at which of the following OSI model layers? (Select TWO)

- A. Layer 1
- B. Layer 2
- C. Layer 3
- D. Layer 4
- E. Layer 5

Correct Answer: BC

Section: (none)

Explanation

Explanation/Reference:

QUESTION 18

A network administrator notices that the border router is having high network capacity loads during non- working hours which is causing web services outages. Which of the following is MOST likely happening?

- A. Evil twin
- B. Session hijacking
- C. Distributed DoS
- D. ARP cache poisoning

Correct Answer: C

Section: (none)

Explanation

Explanation/Reference:

QUESTION 19

Which of the following is considered a classless routing protocol?

- A. IGRP
- B. IS-IS
- C. RIPv1

D. STP

Correct Answer: B

Section: (none)

Explanation

Explanation/Reference:

QUESTION 20

Upon arrival at work an administrator is informed that network users cannot access the file server. The administrator logs onto the server and sees that updates were automatically installed and the network connection shows limited or no availability. Which of the following needs to be rolled back?

- A. The browser on the server
- B. The server's NIC driver
- C. The servers IP address
- D. The antivirus updates

Correct Answer: B

Section: (none)

Explanation

Explanation/Reference:

QUESTION 21

Which of the following protocols were designed to avoid loops on a Layer 2 network? (Select TWO)

- A. OSPF
- B. RIPv2
- C. 802.1q
- D. Spanning Tree
- E. 802.1d
- F. QoS

Correct Answer: DE

Section: (none)

Explanation

Explanation/Reference:

QUESTION 22

An organization is involved in a civil court action and needs to ensure email messages are retained. Which of the following describes the requirement to archive and retain email traffic and other correspondence?

- A. Chain of custody
- B. Legal hold
- C. Divide and conquer
- D. Persistent agents

Correct Answer: B

Section: (none)

Explanation

Explanation/Reference:

QUESTION 23

A network technician needs to set up two public facing web servers and watns to ensure that if they are compromised the intruder cannot access the intranet. Which of the following security techniques should be used?

- A. Place them behind honeypots
- B. Place them in a separate subnet
- C. Place them between two internal firewalls
- D. Place them in the demilitarized zone

Correct Answer: D

Section: (none)

Explanation

Explanation/Reference:

QUESTION 24

A company has a network with three switches, each one with eight ports. The switch is connected to a router that has a hub with four computers plugged into one of its interfaces. How many broadcast domains are present in this company's network

- A. 1
- B. 2
- C. 5
- D. 16
- E. 28

Correct Answer: B

Section: (none)

Explanation

Explanation/Reference:

QUESTION 25

Which of the following allows a telecommunications company to test circuits to customers remotely?

- A. VLAN
- B. Toner Probe
- C. RDP
- D. Smart Jack
- E. VPN

Correct Answer: D

Section: (none)

Explanation

Explanation/Reference:

QUESTION 26

A network technician needs to monitor the network to find a user that is browsing inappropriate websites. Which of the following would the technician use to view the website and find the user browsing it?

- A. An SNMP GET
- B. A top listener tool
- C. An intrusion detection system
- D. A packet sniffer

Correct Answer: D

Section: (none)

Explanation

Explanation/Reference:

QUESTION 27

A company plan established to resume normal system operations following a disruption in business would be described as which of the following?

- A. First responders
- B. User awareness training
- C. Disaster recovery
- D. Business continuity

Correct Answer: D

Section: (none)

Explanation

Explanation/Reference:

QUESTION 28

An administrator has a physical server with a single NIC. The server needs to deploy two virtual machines. Each virtual machine needs two NIC's, one that connects to the network, and a second that is a server to server heartbeat connection between the two virtual machines. After deploying the virtual machines, which of the following should the administrator do to meet these requirements?

- A. The administrator should create a virtual switch for each guest. The switches should be configured for inter-switch links and the primary NIC should have a NAT to the corporate network
- B. The administrator should create a virtual switch that is bridged to the corporate network and a second virtual switch that carries intra-VM communication only
- C. The administrator should create a virtual switch to bridge all of the connections to the network. The virtual heartbeat NICs should be set to addresses in an unused range
- D. The administrator should install a second physical NIC onto the host, and then connect each guest machine's NICs to a dedicated physical NIC

Correct Answer: C

Section: (none)

Explanation

Explanation/Reference:

QUESTION 29

A company is installing several APs for a new wireless system that requires users to authenticate to the domain. The network technician would like to authenticate to a central point. Which of the following would work BEST to achieve these results?

- A. A TACACS+ device and a RADIUS server
- B. A TACACS and a proxy server
- C. A RADIUS server and an access point
- D. A RADIUS server and a network controller

Correct Answer: C

Section: (none)

Explanation

Explanation/Reference:

QUESTION 30

A contractor was hired to troubleshoot congestion issues on the network. After a few of the switches have been reconfigured/upgraded by the contractor, congestion worsens and collisions increase. Which of the following is the BEST action to alleviate the situation?

- A. Allow the contractor to reset switches to factory defaults
- B. Check the cabling on all switches for improper crossover use
- C. Document the changes that were made
- D. Downgrade firmware and restore backup configuration

Correct Answer: D

Section: (none)

Explanation

Explanation/Reference:

QUESTION 31

The Chief Information Officer (CIO) of an organization is concerned that the current locally-hosted, software threat solution is not agile enough. The CIO points to specific examples of zero-day threats that have recently taken a day or more to receive patches. The IT team is tasked with finding a solution that has a better chance of stopping emerging threats and stopping zero-day threats more quickly. Which of the following solutions would have the BEST chance of meeting these goals?

- A. Stateful firewall
- B. Premise-based IDS
- C. Host-based IDS
- D. Cloud-based anti-malware

Correct Answer: A

Section: (none)

Explanation

Explanation/Reference:

QUESTION 32

A network administrator noticed that when one computer goes down, all the other computers in the office will not work. Which of the following topologies is in use?

- A. Star
- B. Ring
- C. Hybrid
- D. Bus
- E. Mesh

Correct Answer: D

Section: (none)

Explanation

Explanation/Reference:

QUESTION 33

An additional network segment is urgently needed for QA testing on the external network. A software release could be impacted if this change is not immediate. The request came directly from management, and there is no time to go through the emergency change control process. Given this scenario, which of the following is the BEST course of action for the network administrator to take?

- A. Wait until the maintenance window, and make the requested change
- B. First document the potential impacts and procedures related to the change
- C. Send out a notification to the company about the change
- D. Make the change, noting the requestor, and document all network changes

Correct Answer: D

Section: (none)

Explanation

Explanation/Reference:

QUESTION 34

Which of the following would be the BEST addition to a business continuity plan that would protect business from a catastrophic event such as a fire, tornado, or earthquake?

- A. UPS and battery backups
- B. Fire suppression systems
- C. Building generator
- D. Hot sites or cold sites
- E. NAS and tape backups

Correct Answer: D

Section: (none)

Explanation

Explanation/Reference:

QUESTION 35

Users have reported poor network performance. A technician suspects a user may have maliciously flooded the network with ping request. Which of the following should the technician implement to avoid potential occurrences from happening in the future?

- A. Block all ICMP request
- B. Update all antivirus software
- C. Remove all suspected users from the network
- D. Upgrade firmware on all network cards

Correct Answer: A

Section: (none)

Explanation

Explanation/Reference:

QUESTION 36

A client is concerned about a hacker compromising a network in order to gain access to confidential research data. Which of the following could be implemented to redirect any attackers on the network?

- A. DMZ
- B. Content Filter
- C. Botnet
- D. Honeytrap

Correct Answer: D

Section: (none)

Explanation

Explanation/Reference:

QUESTION 37

Users connecting to an SSID appear to be unable to authenticate to the captive portal. Which of the following is the cause of this issue?

- A. WPA2 security key
- B. SSL certificates
- C. CSMA/CA
- D. RADIUS

Correct Answer: D

Section: (none)

Explanation

Explanation/Reference:

QUESTION 38

A client reports that half of the office is unable to access a shared resource. Which of the following should be used to troubleshoot the issue?

- A. Data backups
- B. Network diagrams
- C. Baseline information
- D. Vendor documentation

Correct Answer: B

Section: (none)

Explanation

Explanation/Reference:

QUESTION 39

Which of the following can be issued from the command line to find the layer 3 hops to a remote destination?

- A. traceroute
- B. nslookup
- C. ping
- D. netstat

Correct Answer: A

Section: (none)

Explanation

Explanation/Reference:

QUESTION 40

A company is implementing enhanced user authentication for system administrators accessing the company's confidential servers. Which of the following would be the BEST example of two-factor authentication?

- A. ID badge and keys
- B. Password and key fob
- C. fingerprint scanner and retina scan
- D. Username and password

Correct Answer: B

Section: (none)

Explanation

Explanation/Reference:

QUESTION 41

While implementing wireless access points into the network, one building is having connectivity issues due to light fixtures being replaced in the ceiling, while all other buildings' connectivity is performing as expected. Which of the following should be exchanged on the access points installed in the building with connectivity issues?



<http://www.gratisexam.com/>

- A. UTP patch cables
- B. Antenna
- C. Power adapter
- D. Security standard

Correct Answer: B

Section: (none)

Explanation

Explanation/Reference:

QUESTION 42

A network administrator wants to deploy a wireless network in a location that has too much RF interference at 2.4 GHz. Which of the following standards requires the use of 5 GHz band wireless transmissions? (Select TWO)

- A. 802.11a
- B. 802.11ac
- C. 802.11b
- D. 802.11g
- E. 802.11n

Correct Answer: AB

Section: (none)

Explanation

<http://www.gratisexam.com/>

Explanation/Reference:

QUESTION 43

While troubleshooting, a technician notices that some clients using FTP still work and that pings to the local router and servers are working. The technician tries to ping all known nodes on the network and they reply positively, except for one of the servers. The technician notices that ping works only when the host name is used but not when FQDN is used. Which of the following servers is MOST likely down?

- A. WINS server
- B. Domain controller
- C. DHCP server
- D. DNS server

Correct Answer: D

Section: (none)

Explanation

Explanation/Reference:

QUESTION 44

A technician adds memory to a router, but that memory is never recognized by the router. The router is then powered down and the technician reallocates all of the memory to different modules. On startup, the router does not boot and displays memory errors. Which of the following is MOST likely the cause?

- A. VTP
- B. Driver update
- C. ESD
- D. Halon particles

Correct Answer: B

Section: (none)

Explanation

Explanation/Reference:

QUESTION 45

A network technician has configured a point-to-point interface on a router, however, once the fiber optic cables have been run, the interface will not come up. The technician has cleaned the fiber connectors and used an optical power meter to confirm that light is passing in both directions without excessive loss. Which of the following is the MOST likely cause?

- A. Distance limitation
- B. Wavelength mismatch
- C. cross-talk
- D. EMI
- E. Macro bend

Correct Answer: B

Section: (none)

Explanation

Explanation/Reference:

QUESTION 46

Which of the following broadband WAN technologies would MOST likely be used to connect several remote branches that have no fiber or satellite connections?

- A. OC12
- B. POTS
- C. WiMAX
- D. OC3

Correct Answer: B

Section: (none)

Explanation

Explanation/Reference:

QUESTION 47

A technician installs a new WAP and users in the area begin to report poor performance. The technician uses a ping and 3 of 5 packets respond. Testing from a wired connection shows 5 of 5 packets respond. Which of the following tools should be used to discover the cause of the poor performance?

- A. Port scanner tool
- B. Interface monitoring tool
- C. Packet capture tool
- D. Spectrum Analyzer tool

Correct Answer: D

Section: (none)

Explanation

Explanation/Reference:

QUESTION 48

A technician is dispatched to investigate sporadic network outages. After looking at the event logs of the network equipment, the technician finds that all of the equipment is restarting at the same time every day. Which of the following can the technician deploy to correct this issue?

A. Grounding bar



<http://www.gratisexam.com/>

B. Rack monitoring

C. UPS

D. Air flow management

E. Surge protector

Correct Answer: C

Section: (none)

Explanation

Explanation/Reference:

QUESTION 49

Which of the following communication technologies is used by video conferencing systems to synchronize video streams, and reduce bandwidth, sent by a central location to subscribed devices?

A. Anycast

B. Unicast

C. CoS

- D. QoS
- E. Multicast

Correct Answer: D

Section: (none)

Explanation

Explanation/Reference:

QUESTION 50

A technician is configuring a computer lab at a school. The computers need to be able to communicate with each other, but students using the computers should not be able to access the internet. Which of the following rules on the firewall should the technician configure for the lab computers?

- A. Block all LAN to LAN traffic
- B. Block all LAN to WAN traffic
- C. Block all WAN to LAN traffic
- D. Block all WLAN to WAN traffic

Correct Answer: C

Section: (none)

Explanation

Explanation/Reference:

Exam D

QUESTION 1

A technician has verified that a recent loss of network connectivity to multiple workstations is due to a bad CAT5 cable in the server room wall. Which of the following tools can be used to locate its physical location within the wall?

- A. Cable certifier
- B. Multimeter
- C. Cable tester
- D. Toner probe

Correct Answer: D

Section: (none)

Explanation

Explanation/Reference:

QUESTION 2

Which of the following is used to authenticate remote workers who connect from offsite? (Select TWO).

- A. OSPF
- B. VTP trunking
- C. Virtual PBX
- D. RADIUS
- E. 802.1x

Correct Answer: DE

Section: (none)

Explanation

Explanation/Reference:

QUESTION 3

Which of the following network infrastructure implementations would be used to support files being transferred between Bluetooth-enabled smartphones?

- A. PAN
- B. LAN

- C. WLAN
- D. MAN

Correct Answer: A

Section: (none)

Explanation

Explanation/Reference:

QUESTION 4

Which of the following would be used in an IP-based video conferencing deployment? (Select TWO).

- A. RS-232
- B. 56k modem
- C. Bluetooth
- D. Codec
- E. SIP

Correct Answer: DE

Section: (none)

Explanation

Explanation/Reference:

QUESTION 5

Which of the following helps prevent routing loops?

- A. Routing table
- B. Default gateway
- C. Route summarization
- D. Split horizon

Correct Answer: D

Section: (none)

Explanation

Explanation/Reference:

QUESTION 6

Which of the following is MOST likely to use an RJ-11 connector to connect a computer to an ISP using a POTS line?

- A. Multilayer switch
- B. Access point
- C. Analog modem
- D. DOCSIS modem

Correct Answer: C

Section: (none)

Explanation

Explanation/Reference:

QUESTION 7

An administrator has a virtualization environment that includes a vSAN and iSCSI switching. Which of the following actions could the administrator take to improve the performance of data transfers over iSCSI switches?

- A. The administrator should configure the switch ports to auto-negotiate the proper Ethernet settings.
- B. The administrator should configure each vSAN participant to have its own VLAN.
- C. The administrator should connect the iSCSI switches to each other over inter-switch links (ISL).
- D. The administrator should set the MTU to 9000 on the each of the participants in the vSAN.

Correct Answer: D

Section: (none)

Explanation

Explanation/Reference:

QUESTION 8

A network topology that utilizes a central device with point-to-point connections to all other devices is which of the following?



<http://www.gratisexam.com/>

- A. Star
- B. Ring
- C. Mesh
- D. Bus

Correct Answer: A

Section: (none)

Explanation

Explanation/Reference:

QUESTION 9

A technician is connecting a NAS device to an Ethernet network. Which of the following technologies will be used to encapsulate the frames?

- A. HTTPS
- B. Fibre channel
- C. iSCSI
- D. MS-CHAP

Correct Answer: C

Section: (none)

Explanation

Explanation/Reference:

QUESTION 10

The network install is failing redundancy testing at the MDF. The traffic being transported is a mixture of multicast and unicast signals. Which of the following would BEST handle the rerouting caused by the disruption of service?

- A. Layer 3 switch
- B. Proxy server
- C. Layer 2 switch
- D. Smart hub

Correct Answer: A

Section: (none)

Explanation

Explanation/Reference:

QUESTION 11

A company wants to create highly available datacenters. Which of the following will allow the company to continue to maintain an Internet presence at all sites in the event that a WAN circuit at one site goes down?

- A. Load balancer
- B. VRRP
- C. OSPF
- D. BGP

Correct Answer: D

Section: (none)

Explanation

Explanation/Reference:

QUESTION 12

A training class is being held in an auditorium. Hard-wired connections are required for all laptops that will be used. The network technician must add a switch to the room through which the laptops will connect for full network access. Which of the following must the technician configure on a switch port, for both switches, in order to create this setup?

- A. DHCP
- B. Split horizon
- C. CIDR
- D. TRUNK

Correct Answer: D

Section: (none)

Explanation

Explanation/Reference:

QUESTION 13

Which of the following communication technologies would MOST likely be used to increase bandwidth over an existing fiber optic network by combining multiple signals at different wavelengths?

- A. DWDM
- B. SONET
- C. ADSL
- D. LACP

Correct Answer: A

Section: (none)

Explanation

Explanation/Reference:

QUESTION 14

Which of the following WAN technologies is associated with high latency?

- A. T1
- B. Satellite
- C. Cable
- D. OCx

Correct Answer: B

Section: (none)

Explanation

Explanation/Reference:

QUESTION 15

Which of the following provides accounting, authorization, and authentication via a centralized privileged database, as well as, challenge/response and password encryption?

- A. Multifactor authentication
- B. ISAKMP
- C. TACACS+
- D. Network access control

Correct Answer: C

Section: (none)

Explanation

Explanation/Reference:

QUESTION 16

Which of the following is used to define how much bandwidth can be used by various protocols on the network?

- A. Traffic shaping
- B. High availability
- C. Load balancing
- D. Fault tolerance

Correct Answer: A

Section: (none)

Explanation

Explanation/Reference:

QUESTION 17

Which of the following network topologies has a central, single point of failure?

- A. Ring
- B. Star
- C. Hybrid
- D. Mesh

Correct Answer: B

Section: (none)

Explanation

Explanation/Reference:

QUESTION 18

A technician is helping a SOHO determine where to install the server. Which of the following should be considered FIRST?

- A. Compatibility requirements
- B. Environment limitations
- C. Cable length
- D. Equipment limitations

Correct Answer: B

Section: (none)

Explanation

Explanation/Reference:

QUESTION 19

When convergence on a routed network occurs, which of the following is true?

- A. All routers are using hop count as the metric
- B. All routers have the same routing table
- C. All routers learn the route to all connected networks
- D. All routers use route summarization

Correct Answer: C

Section: (none)

Explanation

Explanation/Reference:

QUESTION 20

A technician has been given a list of requirements for a LAN in an older building using CAT6 cabling. Which of the following environmental conditions should be considered when deciding whether or not to use plenum-rated cables?

- A. Workstation models
- B. Window placement
- C. Floor composition
- D. Ceiling airflow condition

Correct Answer: D

Section: (none)

Explanation

Explanation/Reference:

QUESTION 21

A company has a new offering to provide access to their product from a central location rather than clients internally hosting the product on the client network. The product contains sensitive corporate information that should not be accessible from one client to another. This is an example of which of the following?

- A. Public SaaS
- B. Private SaaS
- C. Hybrid IaaS
- D. Community IaaS

Correct Answer: B

Section: (none)

Explanation

Explanation/Reference:

QUESTION 22

Which of the following refers to a network that spans several buildings that are within walking distance of each other?

- A. CAN
- B. WAN
- C. PAN
- D. MAN

Correct Answer: A

Section: (none)

Explanation

Explanation/Reference:

QUESTION 23

An administrator notices an unused cable behind a cabinet that is terminated with a DB-9 connector. Which of the following protocols was MOST likely used on this cable?

- A. RS-232
- B. 802.3
- C. ATM
- D. Token ring

Correct Answer: A

Section: (none)

Explanation

Explanation/Reference:

QUESTION 24

Which of the following describes an IPv6 address of ::1?

- A. Broadcast
- B. Loopback
- C. Classless
- D. Multicast

Correct Answer: B

Section: (none)

Explanation

Explanation/Reference:

QUESTION 25

A SQL server needs several terabytes of disk space available to do an uncompressed backup of a database. Which of the following devices would be the MOST

cost efficient to use for this backup?

- A. iSCSI SAN
- B. FCoE SAN
- C. NAS
- D. USB flash drive:

Correct Answer: C

Section: (none)

Explanation

Explanation/Reference:

QUESTION 26

A technician needs to set aside addresses in a DHCP pool so that certain servers always receive the same address. Which of the following should be configured?



<http://www.gratisexam.com/>

- A. Leases
- B. Helper addresses
- C. Scopes
- D. Reservations

Correct Answer: D

Section: (none)

Explanation

Explanation/Reference:

QUESTION 27

Which of the following network elements enables unified communication devices to connect to and traverse traffic onto the PSTN?

<http://www.gratisexam.com/>

- A. Access switch
- B. UC gateway
- C. UC server
- D. Edge router

Correct Answer: B

Section: (none)

Explanation

Explanation/Reference:

QUESTION 28

A network technician receives the following alert from a network device:

"High utilizations threshold exceeded on gi1/0/24 : current value 9413587.54"

Which of the following is being monitored to trigger the alarm?

- A. Speed and duplex mismatch
- B. Wireless channel utilization
- C. Network device CPU
- D. Network device memory
- E. Interface link status

Correct Answer: E

Section: (none)

Explanation

Explanation/Reference:

QUESTION 29

A technician is configuring a managed switch and needs to enable 802.3af. Which of the following should the technician enable?

- A. PoE
- B. Port bonding
- C. VLAN

D. Trunking

Correct Answer: A

Section: (none)

Explanation

Explanation/Reference:

QUESTION 30

Which of the following protocols must be implemented in order for two switches to share VLAN information?

- A. VTP
- B. MPLS
- C. STP
- D. PTP

Correct Answer: A

Section: (none)

Explanation

Explanation/Reference:

QUESTION 31

After a recent breach, the security technician decides the company needs to analyze and aggregate its security logs. Which of the following systems should be used?

- A. Event log
- B. Syslog
- C. SIEM
- D. SNMP

Correct Answer: C

Section: (none)

Explanation

Explanation/Reference:

QUESTION 32

A network technician is diligent about maintaining all system servers' at the most current service pack level available. After performing upgrades, users experience issues with server-based applications. Which of the following should be used to prevent issues in the future?

- A. Configure an automated patching server
- B. Virtualize the servers and take daily snapshots
- C. Configure a honeypot for application testing
- D. Configure a test lab for updates

Correct Answer: D

Section: (none)

Explanation

Explanation/Reference:

QUESTION 33

A company has implemented the capability to send all log files to a central location by utilizing an encrypted channel. The log files are sent to this location in order to be reviewed. A recent exploit has caused the company's encryption to become unsecure. Which of the following would be required to resolve the exploit?

- A. Utilize a FTP service
- B. Install recommended updates
- C. Send all log files through SMTP
- D. Configure the firewall to block port 22

Correct Answer: B

Section: (none)

Explanation

Explanation/Reference:

QUESTION 34

The RAID controller on a server failed and was replaced with a different brand. Which of the following will be needed after the server has been rebuilt and joined to the domain?

- A. Vendor documentation
- B. Recent backups

- C. Physical IP address
- D. Physical network diagram

Correct Answer: B

Section: (none)

Explanation

Explanation/Reference:

QUESTION 35

A network technician has been tasked with designing a WLAN for a small office. One of the requirements of this design is that it is capable of supporting HD video streaming to multiple devices. Which of the following would be the appropriate wireless technology for this design?

- A. 802.11g
- B. 802.11ac
- C. 802.11b
- D. 802.11a

Correct Answer: B

Section: (none)

Explanation

Explanation/Reference:

QUESTION 36

A company is experiencing accessibility issues reaching services on a cloud-based system. Which of the following monitoring tools should be used to locate possible outages?

- A. Network analyzer
- B. Packet analyzer
- C. Protocol analyzer
- D. Network sniffer

Correct Answer: A

Section: (none)

Explanation

Explanation/Reference:

QUESTION 37

A company is experiencing very slow network speeds of 54Mbps. A technician has been hired to perform an assessment on the existing wireless network. The technician has recommended an 802.11n network infrastructure. Which of the following allows 802.11n to reach higher speeds?

- A. MU-MIMO
- B. LWAPP
- C. PoE
- D. MIMO

Correct Answer: D

Section: (none)

Explanation

Explanation/Reference:

QUESTION 38

It has been determined by network operations that there is a severe bottleneck on the company's mesh topology network. The field technician has chosen to use log management and found that one router is making routing decisions slower than others on the network. This is an example of which of the following?

- A. Network device power issues
- B. Network device CPU issues
- C. Storage area network issues
- D. Delayed responses from RADIUS

Correct Answer: B

Section: (none)

Explanation

Explanation/Reference:

QUESTION 39

After a company rolls out software updates, Ann, a lab researcher, is no longer able to use lab equipment connected to her PC. The technician contacts the vendor and determines there is an incompatibility with the latest IO drivers. Which of the following should the technician perform so that Ann can get back to work as quickly as possible?

- A. Reformat and install the compatible drivers.
- B. Reset Ann's equipment configuration from a backup.
- C. Downgrade the PC to a working patch level.
- D. Restore Ann's PC to the last known good configuration.
- E. Roll back the drivers to the previous version.

Correct Answer: E

Section: (none)

Explanation

Explanation/Reference:

QUESTION 40

A system administrator has been tasked to ensure that the software team is not affecting the production software when developing enhancements. The software that is being updated is on a very short SDLC and enhancements must be developed rapidly. These enhancements must be approved before being deployed. Which of the following will mitigate production outages before the enhancements are deployed?

- A. Implement an environment to test the enhancements.
- B. Implement ACLs that only allow management access to the enhancements.
- C. Deploy an IPS on the production network.
- D. Move the software team's workstations to the DMZ.

Correct Answer: A

Section: (none)

Explanation

Explanation/Reference:

QUESTION 41

An administrator reassigns a laptop to a different user in the company. Upon delivering the laptop to the new user, the administrator documents the new location, the user of the device and when the device was reassigned. Which of the following BEST describes these actions?

- A. Network map
- B. Asset management
- C. Change management
- D. Baselines

Correct Answer: B

Section: (none)

Explanation

Explanation/Reference:

QUESTION 42

Company policies require that all network infrastructure devices send system level information to a centralized server. Which of the following should be implemented to ensure the network administrator can review device error information from one central location?

- A. TACACS+ server
- B. Single sign-on
- C. SYSLOG server
- D. Wi-Fi analyzer

Correct Answer: C

Section: (none)

Explanation

Explanation/Reference:

QUESTION 43

A network technician has been tasked to configure a new network monitoring tool that will examine interface settings throughout various network devices. Which of the following would need to be configured on each network device to provide that information in a secure manner?

- A. S/MIME
- B. SYSLOG
- C. PGP
- D. SNMPv3
- E. RSH

Correct Answer: D

Section: (none)

Explanation

Explanation/Reference:

QUESTION 44

Which of the following would be the result of a user physically unplugging a VoIP phone and connecting it into another interface with switch port security enabled as the default setting?



<http://www.gratisexam.com/>

- A. The VoIP phone would request a new phone number from the unified communications server.
- B. The VoIP phone would cause the switch interface, that the user plugged into, to shutdown.
- C. The VoIP phone would be able to receive incoming calls but will not be able to make outgoing calls.
- D. The VoIP phone would request a different configuration from the unified communications server.

Correct Answer: B

Section: (none)

Explanation

Explanation/Reference:

QUESTION 45

A company is deploying a new wireless network and requires 800Mbps network throughput. Which of the following is the MINIMUM configuration that would meet this need?

- A. 802.11ac with 2 spatial streams and an 80MHz bandwidth
- B. 802.11ac with 3 spatial streams and a 20MHz bandwidth
- C. 802.11ac with 3 spatial streams and a 40MHz bandwidth
- D. 802.11ac with 4 spatial streams and a 160MHz bandwidth

Correct Answer: A

Section: (none)

Explanation

<http://www.gratisexam.com/>

Explanation/Reference:

QUESTION 46

A technician would like to track the improvement of the network infrastructure after upgrades. Which of the following should the technician implement to have an accurate comparison?

- A. Regression test
- B. Speed test
- C. Baseline
- D. Statement of work

Correct Answer: C

Section: (none)

Explanation

Explanation/Reference:

QUESTION 47

When two or more links need to pass traffic as if they were one physical link, which of the following would be used to satisfy the requirement?

- A. Port mirroring
- B. 802.1w
- C. LACP
- D. VTP

Correct Answer: C

Section: (none)

Explanation

Explanation/Reference:

QUESTION 48

A VLAN with a gateway offers no security without the addition of:

- A. An ACL.
- B. 802.1w.

- C. A RADIUS server.
- D. 802.1d.

Correct Answer: A

Section: (none)

Explanation

Explanation/Reference:

QUESTION 49

Network segmentation provides which of the following benefits?

- A. Security through isolation
- B. Link aggregation
- C. Packet flooding through all ports
- D. High availability through redundancy

Correct Answer: A

Section: (none)

Explanation

Explanation/Reference:

QUESTION 50

A network technician must create a wireless link between two buildings in an office park utilizing the 802.11ac standard. The antenna chosen must have a small physical footprint and minimal weight as it will be mounted on the outside of the building. Which of the following antenna types is BEST suited for this solution?

- A. Yagi
- B. Omni-directional
- C. Parabolic
- D. Patch

Correct Answer: A

Section: (none)

Explanation

Explanation/Reference:

Exam E

QUESTION 1

A technician has punched down only the middle two pins (pins 4 and 5) on an ethernet patch panel. The technician has cabled this port to be used with which of the following?

- A. 10baseT
- B. POTS
- C. 568B
- D. 568A

Correct Answer: B

Section: (none)

Explanation

Explanation/Reference:

QUESTION 2

Which of the following protocols is used to encapsulate other network layer protocols such as multicast and IPX over WAN connections?

- A. MPLS
- B. ESP
- C. GRE
- D. PPP

Correct Answer: D

Section: (none)

Explanation

Explanation/Reference:

QUESTION 3

A network technician is tasked with designing a firewall to improve security for an existing FTP server that is on the company network and is accessible from the internet. The security concern is that the FTP server is compromised it may be used as a platform to attack other company servers. Which of the following is the BEST way to mitigate this risk?

- A. Add an outbound ACL to the firewall

- B. Change the FTP server to a more secure SFTP
- C. Use the implicit deny of the firewall
- D. Move the server to the DMZ of the firewall

Correct Answer: D

Section: (none)

Explanation

Explanation/Reference:

QUESTION 4

An additional network segment is urgently needed for QA testing on the external network. A software release could be impacted if this change is not immediate. The request comes directly from management, and there is no time to go through the emergency change control process. Given this scenario, which of the following is the BEST course of action for the network administrator to take?

- A. Wait until the maintenance window, and make the requested change
- B. First document the potential impacts and procedures related to the change
- C. Send out a notification to the company about the change
- D. Make the change, noting the requester, and document all network changes

Correct Answer: D

Section: (none)

Explanation

Explanation/Reference:

QUESTION 5

A network administrator received the following email from a user:

From: user@company.com

To: abuse@company.com

Subject: Free smart phone

Dear, user, please click the following link to get your free smart phone <http://www.freesmartphone.it:8080/survey.php>

Which of the following should the administrator do to prevent all employees from accessing the link in the above email, while still allowing Internet access to the freesmartphone.it domain?

- A. Add <http://www.freesmartphone.it:8080/survey.php> to the browser group policy block list.
- B. Add DENY TCP <http://www.freesmartphone.it> ANY EQ 8080 to the firewall ACL

- C. Add DENY IP ANY ANY EQ 8080 to the intrusion detection system filter
- D. Add <http://www.freesmartphone.it:8080/survey.php> to the load balancer

Correct Answer: A

Section: (none)

Explanation

Explanation/Reference:

QUESTION 6

Which of the following types of equipment should be used for telecommunications equipment and have an open design?

- A. 2/4 post racks
- B. Rail Racks
- C. Vertical frame
- D. Ladder racks

Correct Answer: A

Section: (none)

Explanation

Explanation/Reference:

QUESTION 7

A facility would like to verify each individual's identity prior to allowing access to the datacenter. Additionally, the facility would like to ensure that users do not tailgate behind other users. Which of the following would BEST meet these goals?

- A. Implement a biometric reader at the datacenter entrance and require passage through a mantrap
- B. Implement a security guard at the facility entrance and a keypad on the datacenter entrance
- C. Implement a CCTV camera and a proximity reader on the datacenter entrance
- D. Implement a biometric reader at the facility entrance and a proximity card at the datacenter entrance

Correct Answer: A

Section: (none)

Explanation

Explanation/Reference:

QUESTION 8

A network technician needs to connect two switches. The technician needs a link between them which is capable of handling 10gb. Which of the following media would be optimal for this application?

- A. CAT5e cable
- B. Coax cable
- C. Fiber Optic cable
- D. CAT6 cable

Correct Answer: C

Section: (none)

Explanation

Explanation/Reference:

QUESTION 9

Joe, an administrator, is setting up three more switches in the test lab and is configuring the switches. He is verifying the connectivity but when he pings one of the switches he receives "Destination Unreachable". Which of the following issues could this be?



<http://www.gratisexam.com/>

- A. Denial of service attack
- B. Misconfigured DNS settings
- C. Misconfigured Split Horizon
- D. RADIUS authentication errors

Correct Answer: C

Section: (none)

Explanation

<http://www.gratisexam.com/>

Explanation/Reference:

QUESTION 10

A company is selecting a fire suppression system for their new datacenter and wants to minimize the IT system recovery period in the event of a fire. Which of the following is the best choice for the fire suppression system?

- A. Portable extinguishers
- B. Wet Pipe
- C. Clean Gas
- D. Dry Pipe

Correct Answer: C

Section: (none)

Explanation

Explanation/Reference:

QUESTION 11

Which of the following BEST describes the process of documenting everyone who has physical access or possession of evidence

- A. Legal hold
- B. Chain of custody
- C. Secure copy protocol
- D. Financial responsibility

Correct Answer: B

Section: (none)

Explanation

Explanation/Reference:

QUESTION 12

A network manager wants a monthly report of the security posture of all the assets on the network (e.g. workstations, servers, routers, switches, firewalls). The report should include any feature of a system or appliance that is missing a security patch, OS update, etc. and the severity of risk that is associated with the missing update or patch. Which of the following solutions would work BEST to present this data?

- A. Security policy
- B. Penetration scan
- C. Virus scan
- D. Vulnerability scanner

Correct Answer: D

Section: (none)

Explanation

Explanation/Reference:

QUESTION 13

Which of the following is a logical host on the network where unauthorized users believe they are on the production network?

- A. Virtual server
- B. VLAN
- C. Honeypot
- D. Virtual Terminal

Correct Answer: C

Section: (none)

Explanation

Explanation/Reference:

QUESTION 14

Joe, the network manager, is leading a project to deploy a SAN. Joe is working with the vendor support technician to properly set up and configure the SAN on the network. In order to begin SAN I/O optimization, which of the following would Joe need to provide the vendor support technician?

- A. Network diagrams
- B. Baseline documents
- C. Asset management document
- D. Access to the datacenter

Correct Answer: A

Section: (none)

Explanation

Explanation/Reference:

QUESTION 15

An administrator has a physical server with a single NIC. The server needs to deploy two virtual machines. Each virtual machine needs two NIC's, one that connects to the network, and a second that is a server to server heartbeat connection between the two virtual machines. After deploying the virtual machines, which of the following should the administrator do to meet these requirements?

- A. The administrator should create a virtual switch for each guest. The switches should be configured for interswitch links and the primary NIC should have a NAT to the corporate network
- B. The administrator should create a virtual switch that is bridged to the corporate network and a second virtual switch that carries intra-VM communication only
- C. The administrator should create a virtual switch to bridge all of the connections to the network. The virtual heartbeat NICs should be set to addresses in an unused range
- D. The administrator should install a second physical NIC onto the host, and then connect each guest machine's NICs to a dedicated physical NIC

Correct Answer: C

Section: (none)

Explanation

Explanation/Reference:

QUESTION 16

Joe, a home user, would like to share music throughout the computers in his house using a USB drive connected to a router he purchased a year ago. The manufacturer states that the router is capable of recognizing 4 TB, however, Joe is unable to get his 3TB drive to show up on the network. Which of the following should Joe perform in order to resolve this issue?

- A. Load the latest hardware drivers for his USB drive
- B. Install the latest OS on his computers
- C. Download the latest playback software for his music files
- D. Flash the latest firmware for his router

Correct Answer: D

Section: (none)

Explanation

Explanation/Reference:

QUESTION 17

A technician has completed a survey of a wireless network and documented signal strengths. This document is known as which of the following?

- A. Logical Network map
- B. Heat map
- C. Network baseline
- D. Bandwidth survey

Correct Answer: D

Section: (none)

Explanation

Explanation/Reference:

QUESTION 18

A network technician must allow use of HTTP from the internet to an internal resource running HTTP. This is an example of which of the following?

- A. Dynamic DNS
- B. Virtual Private networking (VPN)
- C. Dynamic NAT
- D. Port Forwarding

Correct Answer: C

Section: (none)

Explanation

Explanation/Reference:

QUESTION 19

A network topology in which all nodes have point to point connections to all other nodes is known as which of the following?

- A. Mesh
- B. Ring
- C. Bus

D. Star

Correct Answer: A

Section: (none)

Explanation

Explanation/Reference:

QUESTION 20

A technician needs to install a server to authenticate remote users before they have access to corporate network resources when working from home. Which of the following servers should the technician implement?

A. DNSSEC

B. PPP

C. RAS

D. VLAN

E. NAT

Correct Answer: C

Section: (none)

Explanation

Explanation/Reference:

QUESTION 21

While monitoring the network, a technician notices that the network traffic to one of the servers is extremely high. Which of the following should the technician use to verify if this is a concern?

A. Log management

B. Network diagram

C. Network baseline

D. Real time monitor

Correct Answer: C

Section: (none)

Explanation

Explanation/Reference:

QUESTION 22

A network administrator wants to deploy a wireless network in a location that has too much RF interference at 2.4 GHz. Which of the following standards requires the use of 5 GHz band wireless transmissions? (Select TWO)

- A. 802.11a
- B. 802.11ac
- C. 802.11b
- D. 802.11g
- E. 802.11n

Correct Answer: AB

Section: (none)

Explanation

Explanation/Reference:

QUESTION 23

A network administrator is tasked with building a wireless network in a new adjacent building. Wireless clients should not have visibility to one another but should have visibility to the wired users. Users must seamlessly migrate between the two buildings while maintaining a connection to the LAN. Which of the following is the BEST way to configure the new wireless network in the new building?

- A. Use the same SSIDs on different channels and AP isolation
- B. Use different SSIDs on different channels and VLANs
- C. Use different SSIDs on the same channels with VLANs
- D. Use the same SSIDs on same channels with AP isolation

Correct Answer: A

Section: (none)

Explanation

Explanation/Reference:

QUESTION 24

A customer is attempting to download a file from a remote FTP server, but receives an error that a connection cannot be opened. Which of the following should be

one FIRST to resolve the problem?

- A. Ensure that port 20 is open
- B. Ensure that port 161 is open
- C. Flush the DNS cache on the local workstation
- D. Validate the security certificate from the host

Correct Answer: A

Section: (none)

Explanation

Explanation/Reference:

QUESTION 25

OFDM, QAM and QPSK are all examples of which of the following wireless technologies?

- A. Frequency
- B. Modulation
- C. RF interference
- D. Spectrum

Correct Answer: B

Section: (none)

Explanation

Explanation/Reference:

QUESTION 26

A network administrator is following best practices to implement firewalls, patch management and policies on the network. Which of the following should be performed to verify the security controls in place?

- A. Penetration testing
- B. AAA authentication testing
- C. Disaster recovery testing
- D. Single point of failure testing

Correct Answer: A

Section: (none)

Explanation

Explanation/Reference:

QUESTION 27

Which of the following is a connectionless protocol (Select TWO)

- A. ICMP
- B. SSL
- C. TCP
- D. SSH
- E. HTTP
- F. UDP

Correct Answer: AF

Section: (none)

Explanation

Explanation/Reference:

QUESTION 28

Ann, a network technician is preparing to configure a company's network. She has installed a firewall to allow for an internal DMZ and external network. No hosts on the internal network should be directly accessible by IP address from the internet, but they should be able to communicate with remote networks after receiving a proper IP address. Which of the following is an addressing scheme that will work in this situation?

- A. Teredo tunneling
- B. Private
- C. APIPA
- D. Classless

Correct Answer: B

Section: (none)

Explanation

Explanation/Reference:

QUESTION 29

A company has just implemented VoIP. Prior to the implementation, all of the switches were upgraded to layer 3 capable in order to more adequately route packages. This is an example of which of the following network segmentation techniques?

- A. Compliance implementation
- B. Separate public/private networking
- C. Honeypot implementation
- D. Performance optimization

Correct Answer: D

Section: (none)

Explanation

Explanation/Reference:

QUESTION 30

QoS operates at which of the following OSI layers? (Select TWO)

- A. Layer 1
- B. Layer 2
- C. Layer 3
- D. Layer 5
- E. Layer 7

Correct Answer: BC

Section: (none)

Explanation

Explanation/Reference:

QUESTION 31

A malicious student is blocking mobile devices from connecting to the internet when other students are in the classroom. Which of the following is the malicious student implementing?

- A. Removing the AP from the classroom
- B. ACL

- C. Jamming
- D. Firewall
- E. IPS

Correct Answer: C

Section: (none)

Explanation

Explanation/Reference:

QUESTION 32

A technician configures a firewall in the following manner in order to allow HTTP traffic

Source IPZoneDest IPZonePortAction

AnyUntrustAnyDMZ80Allow

The organization should upgrade to which of the following technologies to prevent unauthorized traffic from traversing the firewall?

- A. HTTPS
- B. Stateless packet inspection
- C. Intrusion detection system
- D. Application aware firewall

Correct Answer: D

Section: (none)

Explanation

Explanation/Reference:

QUESTION 33

Exploiting a weakness in a user's wireless headset to compromise the mobile device is known as which of the following?

- A. Multiplexing
- B. Zero-day attack
- C. Smurfing
- D. Bluejacking

Correct Answer: D

Section: (none)

Explanation**Explanation/Reference:****QUESTION 34**

A technician has determined the most likely cause of an issue and implement a solution. Which of the following is the NEXT step that should be taken?

- A. Document the findings, actions, and outcomes
- B. Duplicate the problem if possible
- C. Verify system functionality
- D. Make an archival backup

Correct Answer: C

Section: (none)

Explanation**Explanation/Reference:****QUESTION 35**

A technician is concerned about security and is asked to set up a network management protocol. Which of the following is the best option

- A. SLIP
- B. SNMPv3
- C. TKIP
- D. SNMPv2

Correct Answer: B

Section: (none)

Explanation**Explanation/Reference:****QUESTION 36**

A network technician wants to allow HTTP traffic through a stateless firewall. The company uses the 192.168.0.0/24 network. Which of the following ACL should the technician configure (Select TWO)

- A. PERMIT SRCIP 192.168.0.0/24 SPORT:80 DSTIP:192.168.0.0/24 DPORT:80
- B. PERMIT SRCIP 192.168.0.0/24 SPORT:ANY DSTIP:ANY DPORT 80
- C. PERMIT SRCIP:ANY SPORT:80 DSTIP:192.168.0.0/24 DPORT ANY
- D. PERMIT SRCIP: ANY SPORT:80 DSTIP:192.168.0.0/24 DPORT:80
- E. PERMIT SRCIP:192.168.0.0/24 SPORT:80 DSTIP:ANY DPORT:80

Correct Answer: D

Section: (none)

Explanation

Explanation/Reference:

Check on this one

QUESTION 37

A network technician has been asked to make the connections necessary to add video transported via fiber optics to the LAN within a building. Which of the following is the MOST common connector that will be used on the switch to connect the media converter?

- A. FDDI
- B. Fiber coupler
- C. MT-RJ
- D. ST

Correct Answer: D

Section: (none)

Explanation

Explanation/Reference:

QUESTION 38

Which of the following protocols is considered a hybrid routing protocol?

- A. OSPF
- B. RIPv2
- C. IS-IS
- D. BGP

Correct Answer: B

Section: (none)

Explanation

Explanation/Reference:

QUESTION 39

Ann, an employee, has properly connected her personal wireless router to a network jack in her office. The router is unable to get a DHCP address though her corporate laptop can get a DHCP address when connected to the same jack. Ann checks the router configuration to ensure it is configured to obtain a DHCP address. Which of the following is the MOST likely reason why the router is not receiving a DHCP address



<http://www.gratisexam.com/>

- A. The administrator has enabled DHCP snooping on the network
- B. The administrator is blocking DHCP requests that originate from access points
- C. The administrator is blocking the wireless router's MAC address using MAC filtering
- D. The Administrator has implemented a feature that only allows white-listed MAC addresses

Correct Answer: D

Section: (none)

Explanation

Explanation/Reference:

QUESTION 40

As part of unified communications services, QoS must be implemented. DSCP and CoS map to which of the following OSI layers? (Select TWO)

- A. Layer 1
- B. Layer 2
- C. Layer 3
- D. Layer 4
- E. Layer 5

<http://www.gratisexam.com/>

Correct Answer: BC

Section: (none)

Explanation

Explanation/Reference:

QUESTION 41

A technician is troubleshooting a newly installed WAP that is sporadically dropping connections to devices on the network. Which of the following should the technician check FIRST?

- A. WAP placement
- B. Encryption type
- C. Bandwidth saturation
- D. WAP SSID

Correct Answer: A

Section: (none)

Explanation

Explanation/Reference:

QUESTION 42

A network technician responds to a customer reporting that a workstation keeps losing its network connection. The user explains that it occurs randomly and it happens several times throughout the day. Which of the following troubleshooting methods should the technician perform FIRST?

- A. Test the theory
- B. Establish a plan of action
- C. Gather information
- D. Question the obvious

Correct Answer: C

Section: (none)

Explanation

Explanation/Reference:

QUESTION 43

A user reports slow computer performance. A technician troubleshooting the issue uses a performance monitoring tool and receives the following results:

Avg % Processor Time = 10%

Avg Pages/Second = 0

Avg Disk Queue Length = 3

Based on the results, which of the following is causing a bottleneck

- A. Hard drive
- B. Memory
- C. Processor
- D. NIC

Correct Answer: A

Section: (none)

Explanation

Explanation/Reference:

QUESTION 44

A technician has responded to a security issue with an employee's computer. Which of the following basic forensic steps should be taken NEXT?

- A. Secure the area
- B. Initiate Data collection
- C. Create the forensics report
- D. Verify the chain of custody

Correct Answer: A

Section: (none)

Explanation

Explanation/Reference:

QUESTION 45

A network technician has downloaded the latest vendor switch O/S. which includes new features and enhancements. Which of the following should the technician perform FIRST when updating the switches?

- A. Backup the current configuration for each switch
- B. Install during non-business hours to test the system
- C. Test the O/S on one of the production switches
- D. Power cycle the company's border router

Correct Answer: A

Section: (none)

Explanation

Explanation/Reference:

QUESTION 46

Which of the following protocols is used to send mail to another server on the Internet?

- A. RTP
- B. SNMP
- C. POP
- D. SMTP

Correct Answer: D

Section: (none)

Explanation

Explanation/Reference:

QUESTION 47

Which of the following ports is used to provide secure sessions over the web by default?

- A. 22
- B. 25
- C. 80
- D. 5004

Correct Answer: A

Section: (none)

Explanation

Explanation/Reference:

QUESTION 48

An attack where the potential intruder tricks a user into providing sensitive information is known as which of the following?

- A. Social engineering
- B. Bluesnarfing
- C. Man-in-the-middle
- D. Evil Twin

Correct Answer: A

Section: (none)

Explanation

Explanation/Reference:

QUESTION 49

After an employee connected a switch port of a home router to the wall jack in the office, other employees in the office started losing connectivity. Which of the following can be implemented on the company switch to prevent loss of connectivity in the future?

- A. Loop prevention
- B. ARP inspections
- C. DHCP snooping
- D. MAC address filtering

Correct Answer: A

Section: (none)

Explanation

Explanation/Reference:

QUESTION 50

An administrator hosts all of the company's virtual servers internally. In the event of total server failure, the server images can be restored on a cloud provider and accessed through the VPN. Which of the following cloud services is the administrator using?

- A. Community PaaS
- B. Public IaaS
- C. Hybrid SaaS
- D. Private IaaS

Correct Answer: B

Section: (none)

Explanation

Explanation/Reference:

QUESTION 51

When troubleshooting a T1 connection, the support representative from the provider instructs a technician to place a special device into the CSU/DSU. Using this device the provider is able to verify that communications are reaching the CSU/DSU. Which of the following was MOST likely used by the technician?

- A. Cable analyzer
- B. Toner probe
- C. OTDR
- D. Loopback plug

Correct Answer: D

Section: (none)

Explanation

Explanation/Reference:

QUESTION 52

A network technician wants to create a network where consultants can go to access the Internet without disrupting the intranet of the office. Which of the following should be created?

- A. Guest network
- B. VLAN network
- C. Security network
- D. DMZ network

Correct Answer: A

Section: (none)

Explanation

Explanation/Reference:

QUESTION 53

Users in a coffee shop may connect to the shop's hotspot named "CoffeeshopWiFi". Another patron has initialized a virtual AP with an identical SSID with the goal of stealing customer's logon credentials. Which of the following is occurring in this scenario?

- A. War Driving
- B. Man in the middle
- C. Evil twin
- D. Spoofing
- E. Rouge AP

Correct Answer: C

Section: (none)

Explanation

Explanation/Reference:

QUESTION 54

A technician needs to use SNMP to manage several legacy devices. The technician wants to ask the vendor for specification that will provide SNMP monitoring of the devices. Which of the following will allow SNMP monitoring of the devices?

- A. SSH
- B. MIMO
- C. SYSLOG
- D. MIBS

Correct Answer: D

Section: (none)

Explanation

Explanation/Reference:

QUESTION 55

A network technician determines that two dynamically assigned workstations have duplicate IP addresses. Which of the following commands should the technician use to correct this problem?

- A. ipconfig /all
- B. ipconfig /dhcp
- C. ipconfig /release then ipconfig /renew
- D. ipconfig /renew

Correct Answer: C

Section: (none)

Explanation

Explanation/Reference:

QUESTION 56

After moving to an adjacent cubicle, a user is reporting that the VoIP phone is randomly rebooting. When the technician relocates the equipment back to the previous space, the phone functions properly. No other stations are being affected. Which of the following is the MOST likely cause?

- A. Attenuation
- B. Bad UPS
- C. Cable short
- D. Misconfigured DNS

Correct Answer: A

Section: (none)

Explanation

Explanation/Reference:

QUESTION 57

The administrator would like to use the strongest encryption level possible using PSK without utilizing an additional authentication server. Which of the following encryption types should be implemented?

- A. WPA2 Enterprise
- B. WEP
- C. MAC filtering
- D. WPA personal

Correct Answer: D

Section: (none)

Explanation

Explanation/Reference:

QUESTION 58

A network administrator wants to logically separate web function servers on the network. Which of the following network devices will need to be configured?

- A. IPS
- B. Switch
- C. Hub
- D. HIDS

Correct Answer: B

Section: (none)

Explanation

Explanation/Reference:

QUESTION 59

A user has installed a new wireless printer. The user cannot get to the internet but can print. All other office users can reach the internet, but cannot connect to the new wireless printer. All users are wireless in this area of the office. The user has MOST likely:

- A. Installed the printer in infrastructure mode
- B. Installed the printer in the wrong subnet
- C. misconfigured the gateway on the wireless printer
- D. installed the printer in ad-hoc mode

Correct Answer: D

Section: (none)

Explanation

Explanation/Reference:



<http://www.gratisexam.com/>