

## CertifyMe

Number: SK0-002  
Passing Score: 800  
Time Limit: 120 min  
File Version: 9.5



<http://www.gratisexam.com/>

***CertifyMe SK0-002***

## **Exam A**

### **QUESTION 1**

Which of the following is the maximum bus speed for Ultra2 Wide SCSI?

- A. 10 MB/sec
- B. 20 MB/sec
- C. 80 MB/sec
- D. 160 MB/sec
- E. 40 MB/sec

**Correct Answer:** C

**Section:** (none)

**Explanation**

**Explanation/Reference:**

### **QUESTION 2**

A server manager logs into a server with his administrator account and installs a third-party diagnostic tool. No installation problems are encountered. Upon starting the tool for the first time, an error code is displayed that is difficult to understand. The manager attempts to reinstall the tool, but receives the same error. Which of the following is the MOST appropriate step to take to resolve the problem?

- A. review the server performance logs for an easier-to-interpret error code
- B. search the network operating system's support website for the specific error code
- C. install the latest network operating system service patch to correct recently identified bugs
- D. review the application documentation

**Correct Answer:** D

**Section:** (none)

**Explanation**

**Explanation/Reference:**

### **QUESTION 3**

Why is it important to document network architecture, hardware, protocols, naming standards, and upgrades?

- A. to help network users better understand network functionality
- B. to provide end users with information on network security
- C. to enable easier troubleshooting in case of network problems
- D. for legal purposes, such as an internal audit

**Correct Answer:** C

**Section:** (none)

**Explanation**

**Explanation/Reference:**

### **QUESTION 4**

A new application is installed on a company server. Which action should be taken after the application is installed and fully functional?

- A. Nothing further is required.
- B. The new application should be benchmarked.
- C. An installation log file should be printed.
- D. A new server baseline should be created.

**Correct Answer:** D

**Section:** (none)

**Explanation**

**Explanation/Reference:**

#### QUESTION 5

How can the telnet client in Windows 2000 Server be started?

- A. Select> Start> Programs> Accessories> Communications> Telnet
- B. type telnet at a command prompt
- C. obtain a copy of the Telnet.exe file from a Windows NT Server, rename it to Telnet32.exe, and then copy it to the Windows 2000-based server
- D. Select> Start> Programs> Accessories> Communications> Hyperterminal

**Correct Answer:** B

**Section:** (none)

**Explanation**

**Explanation/Reference:**

#### QUESTION 6

A UPS (Uninterruptible Power Supply) is being selected for a remote office. The correct size UPS (Uninterruptible Power Supply) needs to be determined. Which formula should be used to determine the load requirements?



<http://www.gratisexam.com/>

- A. Watts = Current X Voltage
- B. VA = Volts x Amperes
- C. VA = kW x 1000 x Amperes
- D. kVA = Volts x Amperes

**Correct Answer:** B

**Section:** (none)

**Explanation**

**Explanation/Reference:**

#### QUESTION 7

A server NIC appears to be causing a network broadcast storm. Which tool BEST confirms the source of the problem?

- A. LAN analyzer  
"Pass Any Exam. Any Time." - www.actualtests.com 3
- B. cable tester
- C. SNMP (Simple Network Management Protocol)
- D. Performance Monitor

**Correct Answer:** A

**Section:** (none)

**Explanation**

**Explanation/Reference:**

#### **QUESTION 8**

A biometric access device is used with which security method?

- A. qualification
- B. authentication
- C. authorization
- D. accountability

**Correct Answer:** B

**Section:** (none)

**Explanation**

**Explanation/Reference:**

#### **QUESTION 9**

Which two are the BEST times to collect server baselines? (Select TWO)

- A. in the morning during normal working hours
- B. on the weekend when doing server maintenance
- C. in the evening during non-business hours
- D. in the afternoon during normal working hours

**Correct Answer:** AD

**Section:** (none)

**Explanation**

**Explanation/Reference:**

#### **QUESTION 10**

A system administrator wants to remotely administer a server using a Web browser-based application so he can administer remotely from any operating system. He wants to ensure that the communication is secure and that only he can log in to the server. Which three actions must the administrator take before he can administer the server? (Select THREE)

- A. use smartcard authentication
- B. install and run the WWW service
- C. use the HTTP over SSL protocol
- D. use the L2TP over IPSec encryption protocol
- E. install a X.509 compliant server

**Correct Answer:** BCE

**Section:** (none)

**Explanation**

**Explanation/Reference:**

**QUESTION 11**

A new server NIC is being installed to connect to a 1000Base-SX gigabit switch. Which cable should be used to connect the NIC to the switch?

- A. Cat5 patch cable
- B. Cat5 crossover cable
- C. Multi-mode fiber cable
- D. Single-mode fiber cable

**Correct Answer:** C

**Section:** (none)

**Explanation**

**Explanation/Reference:**

**QUESTION 12**

A company is evaluating a new server and network management package.

They require a package that supports the SNMP (Simple Network Management Protocol) V3 protocol that addresses concerns about \_\_\_\_\_ that plagued previous versions of the protocol.

- A. OID (ObjectIdentifier) errors
- B. SNMP (Simple Network Management Protocol) routing
- C. the MIB (Management Information Base) hierarchy
- D. protocol security

**Correct Answer:** D

**Section:** (none)

**Explanation**

**Explanation/Reference:**

**QUESTION 13**

A RAID monitoring system indicates that two hot-pluggable drives are experiencing periodic read/write failures. What should be done?

- A. replace one drive, allow time for automatic data recovery, and then replace the second drive
- B. wait until the drives fail, replace the drives, and rebuild the data from tape backup
- C. replace both drives at the same time and then rebuild the data from tape backup
- D. replace both drives and allow time for automatic data recovery

**Correct Answer:** A

**Section:** (none)

**Explanation**

**Explanation/Reference:**

"Pass Any Exam. Any Time." - www.actualtests.com 5

**QUESTION 14**

A technician is preparing to install a flash BIOS upgrade on a server. Which two actions should the technician take to ensure a successful upgrade? (Select TWO)

- A. make sure the bootstrap loader and the POST functions are working properly before applying the update
- B. check the BIOS upgrade documentation to make sure the update addresses issues that need to be resolved
- C. make sure the BIOS chips have undergone ultraviolet erasing prior to the update
- D. record the current CMOS settings to help streamline reconfiguration after the update

**Correct Answer:** BD

**Section:** (none)

**Explanation**

**Explanation/Reference:**

**QUESTION 15**

Users report that the intranet database is slow to respond during peak use times. The database server is on a small 150-user network and is configured with dual processors, 512 MB RAM, and a hardware-controlled RAID 5 array with three drives. The server also provides DNS and DHCP services for the intranet. Which three are ways to improve server performance? (Select THREE)

- A. move the page file to another partition on the RAID 5 array
- B. add a hard drive to the RAID 5 array
- C. move the DNS and DHCP services to another server
- D. set processor affinity

**Correct Answer:** BCD

**Section:** (none)

**Explanation**

**Explanation/Reference:**

**QUESTION 16**

An Ultra 160 or Ultra 320 device falls under which SCSI standard?

- A. SCSI-2
- B. SCSI-1
- C. SCSI-3
- D. SCSI-4

**Correct Answer:** C

**Section:** (none)

**Explanation**

**Explanation/Reference:**

**QUESTION 17**

"Pass Any Exam. Any Time." - www.actualtests.com 6

Two new servers are purchased and need to be installed to allow sharing of a single external hard drive

enclosure. One server is configured as a local file server, and the other as a database server for a different network.

The onsite technician notices that when both servers are running at the same time, they each receive SCSI errors. When they are running individually, no errors are reported.

Which of the following is the BEST source of information to use for troubleshooting this problem?

- A. the server vendor's FAQ website
- B. the SCSI controller vendor's user manual
- C. the network operating system vendor's website
- D. the drive enclosure vendor's user manual

**Correct Answer: D**

**Section: (none)**

**Explanation**

**Explanation/Reference:**

#### **QUESTION 18**

Users report that the company's email server operates slowly at approximately 3:00 p.m. each work day. Which action could be taken to determine the cause of the slowdown?

- A. do a network trace to determine any issues with the network
- B. add more RAM to the server and do a new baseline
- C. check the logs to determine when maintenance programs are scheduled
- D. check the page file size

**Correct Answer: C**

**Section: (none)**

**Explanation**

**Explanation/Reference:**

#### **QUESTION 19**

A small company is backing up mission-critical data and wants to implement a disaster recovery plan. The network administrator is tasked with developing the disaster recovery plan. Which step should be taken FIRST when developing the plan?

- A. practice the disaster recovery drills
- B. determine the enterprise configuration
- C. explore disaster prevention techniques
- D. create a step-by-step restoration plan

**Correct Answer: B**

**Section: (none)**

**Explanation**

**Explanation/Reference:**

"Pass Any Exam. Any Time." - [www.actualtests.com](http://www.actualtests.com) 7

#### **QUESTION 20**

The latest SCSI adaptor card is purchased from a vendor. Drivers for the operating system cannot be obtained. The SCSI adapter card is added to an existing server. Upon booting, the operating system does not detect the

card. Which of the following is the MOST likely cause of the problem?

- A. Operating system patches were not updated before installing the card.
- B. The SCSI card is not seated correctly.
- C. The SCSI card is not listed on the operating system HCL (Hardware Compatibility List).
- D. The termination is incorrectly set on the SCSI card.

**Correct Answer: C**

**Section: (none)**

**Explanation**

**Explanation/Reference:**

#### **QUESTION 21**

There is 8U available in a server rack. How much space is this?

- A. 16 inches (40.6 cm)
- B. 14 inches (35.6 cm)
- C. 8 inches (20.4 cm)
- D. 4 inches (10.2 cm)

**Correct Answer: B**

**Section: (none)**

**Explanation**

**Explanation/Reference:**

#### **QUESTION 22**

The IEEE has defined "end of useful life" for a UPS (Uninterruptible Power Supply) battery occurs when the battery can no longer supply a particular percentage of its rated capacity in ampere- hours. This percentage is:

- A. 50%.
- B. 80%.
- C. 5%.
- D. 10%.

**Correct Answer: B**

**Section: (none)**

**Explanation**

**Explanation/Reference:**

#### **QUESTION 23**

During a test of the disaster recovery plan, it is discovered that some servers were restored with other servers' data. Which action is MOST likely to improve disaster recovery in the future?

"Pass Any Exam. Any Time." - [www.actualtests.com](http://www.actualtests.com) 8

- A. implement a media rotation scheme for offsite tapes
- B. implement a differential backup strategy
- C. maintain a printed tape backup report
- D. create a database that contains the backup logs stored on an incremental server



**Correct Answer:** C  
**Section:** (none)  
**Explanation**

**Explanation/Reference:**

**QUESTION 24**

Which two are functions of a proxy server? (Select TWO)

- A. provides a secure Internet connection
- B. filters Internet requests
- C. improves Internet performance
- D. resolves fully qualified domain names to IP addresses

**Correct Answer:** BC  
**Section:** (none)  
**Explanation**

**Explanation/Reference:**

**QUESTION 25**

A server was recently installed with all necessary hardware and software. Before placing the server into service, a(n) \_\_\_\_\_ should be created.

- A. application backup
- B. Performance Monitor log
- C. System Monitor log
- D. performance baseline

**Correct Answer:** D  
**Section:** (none)  
**Explanation**

**Explanation/Reference:**

**QUESTION 26**

A server is maintained by a group of administrators. When a commonly accessed application is used, the server crashes. After discussing the issue with the server team, the technician learns that the problem has occurred several times in the recent past. Which troubleshooting step should be taken FIRST?

- A. determine what changed prior to the server's first crash
  - B. check the application manufacturer's knowledge base
  - C. call the hardware technical support to see if this is a known hardware limitation
  - D. call the software vendor to see if there is a patch to correct this problem
- "Pass Any Exam. Any Time." -  
[www.actualtests.com](http://www.actualtests.com) 9

**Correct Answer:** A  
**Section:** (none)  
**Explanation**

**Explanation/Reference:**

**QUESTION 27**

Which two statements are true? (Select TWO)

- A. DDR RAM must be installed in pairs.
- B. Continuity modules must be installed in empty SDRAM slots.
- C. Continuity modules must be installed in empty RAMBUS slots.
- D. EDO RAM must be installed in pairs.

**Correct Answer:** CD

**Section:** (none)

**Explanation**

**Explanation/Reference:**

**QUESTION 28**

Which of the following is one of the biggest advantages of RMON (Remote Monitoring) over SNMP (Simple Network Management Protocol)?

- A. RMON (Remote Monitoring) analyzes traffic only at the physical layer.
- B. RMON (Remote Monitoring) has fewer MIBs (Management Information Bases) than SNMP (Simple Network Management Protocol) so it is easier to understand.
- C. RMON (Remote Monitoring) provides performance monitoring.
- D. RMON (Remote Monitoring) allows an administrator to restart a device.

**Correct Answer:** C

**Section:** (none)

**Explanation**

**Explanation/Reference:**

**QUESTION 29**

After upgrading the SNMP (Simple Network Management Protocol) protocol, the \_\_\_\_\_ can be looked up. It is a sequence of integers that uniquely identifies a path to a managed object.

- A. MIB (Management Information Base)
- B. OID (ObjectIdentifier)
- C. community name
- D. register

**Correct Answer:** B

**Section:** (none)

**Explanation**

**Explanation/Reference:**

**QUESTION 30**

"Pass Any Exam. Any Time." - [www.actualtests.com](http://www.actualtests.com) 10

Which of the following is an advantage of a hardware RAID array over a software RAID array?

- A. It is capable of using the server CPU to perform parity calculations.
- B. No reboot is required to access the SCSI BIOS.

- C. It offers both performance and redundancy.
- D. If the operating system becomes corrupt, the array remains intact.

**Correct Answer:** D

**Section:** (none)

**Explanation**

**Explanation/Reference:**

### QUESTION 31

A new server room is being built. The server room doors should be able to be locked. Which two are additional aspects of physical security should be checked in the new server room? (Select TWO)

- A. locks for the server racks
- B. server console passwords
- C. firewall installation on the network
- D. storage location for the backup tapes

**Correct Answer:** AD

**Section:** (none)

**Explanation**

**Explanation/Reference:**

### QUESTION 32

A company plans to upgrade a network server. Before proceeding with the upgrade, the HCL (Hardware Compatibility List) and hardware is checked and necessary backups and documentation are made.

The existing 512 MB of SDRAM is replaced with 1024 MB. The 10 Mbps network card is replaced with a 10/100 PCI network card. When the server restarts, beeps sound and the server does not pass the POST.

Which of the following is the MOST likely cause of the problem?

- A. The memory is not seated correctly.
- B. The server does not support 1024 MB of memory.
- C. The network card is not configured correctly.
- D. Master SDRAM ECC needs to be enabled in the CMOS.

**Correct Answer:** A

**Section:** (none)

**Explanation**

**Explanation/Reference:**

"Pass Any Exam. Any Time." - [www.actualtests.com](http://www.actualtests.com) 11

### QUESTION 33

Which two statements are true about software-based RAID? (Select TWO)

- A. Hot-plug and hot-spare features are available with software-based RAID.
- B. Intervention is not required to recover fully from a drive failure.
- C. Hard disk make and model do not have to be the same when using software-based RAID.
- D. CPU load is increased when using software-based RAID.

**Correct Answer:** CD

**Section: (none)**

**Explanation**

**Explanation/Reference:**

**QUESTION 34**

A server is being set up. A SCSI controller that has a bus width of 16 bits and supports a maximum of 16 devices is required. Which two types of SCSI controllers meet this specification? (Select TWO)

- A. Fast Wide SCSI
- B. Ultra2 SCSI
- C. Ultra SCSI
- D. Ultra2 Wide SCSI
- E. Fast SCSI

**Correct Answer: AD**

**Section: (none)**

**Explanation**

**Explanation/Reference:**

**QUESTION 35**

Which technology enables a technician to turn on a client running any kind of operating system?

- A. modem
- B. WOL (Wake-On-LAN)
- C. remote access card
- D. RAS (Remote Access Server)
- E. RRAS (Routing and Remote Access Service)

**Correct Answer: B**

**Section: (none)**

**Explanation**

**Explanation/Reference:**

**QUESTION 36**

Which RAID standard combines data striping across drives with mirroring?

- A. RAID 1+5  
"Pass Any Exam. Any Time." - www.actualtests.com 12
- B. RAID 3
- C. Hybrid RAID 5+
- D. RAID 0+1

**Correct Answer: D**

**Section: (none)**

**Explanation**

**Explanation/Reference:**

**QUESTION 37**

A server recently had a RAID controller replaced under warranty by the manufacturer. Since the repair, the system seems to be generating several write errors, and sometimes does not boot into the operating system. Which of the following is the MOST effective solution to apply FIRST?

- A. replace the device drivers, as they are incorrect
- B. replace the RAID configuration, as it is incorrect
- C. replace the RAID controller, as it is damaged
- D. replace the system board, as it is damaged

**Correct Answer:** A

**Section:** (none)

**Explanation**

**Explanation/Reference:**

**QUESTION 38**

After adding three additional IDE hard disks and a SCSI DVD-RW drive to an existing server, the server no longer boots. The original IDE drive is still configured as a master on the primary IDE channel. After multiple attempts at resetting the server, only two devices attached to the secondary IDE channel appear during POST.

Which three are likely causes of this problem? (Select THREE)

- A. There are two drives on the primary channel designated as Master.
- B. Termination is not enabled on the new hard disks.
- C. The BIOS needs to be updated to recognize the new IDE drives.
- D. The cable for the primary IDE channel is not seated correctly.
- E. Power is not connected to the two drives.

**Correct Answer:** ADE

**Section:** (none)

**Explanation**

**Explanation/Reference:**

**QUESTION 39**

A UNIX server has three 60 GB hard drives. A fault-tolerant array needs to be implemented. Which two configurations can be used? (Select TWO)

"Pass Any Exam. Any Time." - [www.actualtests.com](http://www.actualtests.com) 13

- A. RAID 5
- B. RAID 0
- C. RAID 0+1
- D. RAID 1

**Correct Answer:** AD

**Section:** (none)

**Explanation**

**Explanation/Reference:**

**QUESTION 40**

Which server hardware feature enables you to install a new disk drive, or remove and replace a failed disk drive, without shutting down the operating system or powering off the system?

- A. self healing hardware
- B. plug and play
- C. hot swap
- D. hot spare

**Correct Answer: C**

**Section: (none)**

**Explanation**

**Explanation/Reference:**

#### **QUESTION 41**

The operating system on a server is being upgraded. After the upgrade, some of the hardware no longer functions correctly. Which action should be taken to solve the problem?

- A. roll back to the previous operating system
- B. check the hardware manufacturer's website of the hardware in question and install drivers specific to the current operating system
- C. upgrade the hardware
- D. test the hardware on another server

**Correct Answer: B**

**Section: (none)**

**Explanation**

**Explanation/Reference:**

#### **QUESTION 42**

A series of replacement servers are installed on a network. The SNMP (Simple Network Management Protocol) monitoring server had previously been able to retrieve statistics from the servers, but is not able to retrieve statistics from the new servers. Which statement is true?

- A. The latest service packs are needed for the SNMP (Simple Network Management Protocol) monitoring server.
- B. The DMI (Desktop Management Interface) agents need to be loaded on the servers.  
"Pass Any Exam. Any Time." - [www.actualtests.com](http://www.actualtests.com) 14
- C. An upgrade to SNMP (Simple Network Management Protocol) Version 3 on the SNMP (Simple Network Management Protocol) monitoring server is needed.
- D. SNMP (Simple Network Management Protocol) community strings need to match between the servers and the SNMP (Simple Network Management Protocol) monitoring server.

**Correct Answer: D**

**Section: (none)**

**Explanation**

**Explanation/Reference:**

#### **QUESTION 43**

Which guideline should you follow when installing equipment in a server rack?

- A. The equipment that produces the most heat should be installed at the top of the rack.
- B. The monitor should be installed in the middle of the rack.
- C. The equipment that requires the most vertical space should be installed at the top of the rack.
- D. The heaviest equipment should be installed at the bottom of the rack.

**Correct Answer:** D

**Section:** (none)

**Explanation**

**Explanation/Reference:**

#### **QUESTION 44**

Which type of UPS (Uninterruptible Power Supply) system allows for correction of brownout and surge conditions without depleting the batteries?

- A. online UPS (Uninterruptible Power Supply)
- B. line interactive UPS (Uninterruptible Power Supply)
- C. offline UPS (Uninterruptible Power Supply)
- D. parallel online UPS (Uninterruptible Power Supply)

**Correct Answer:** B

**Section:** (none)

**Explanation**

**Explanation/Reference:**

#### **QUESTION 45**

Which of the following is the functional description of a server connected between two separate IP subnets?

- A. server as a router
  - B. server as a switch
  - C. server as a bridge
  - D. server as a data link
- "Pass Any Exam. Any Time." - [www.actualtests.com](http://www.actualtests.com) 15

**Correct Answer:** A

**Section:** (none)

**Explanation**

**Explanation/Reference:**

#### **QUESTION 46**

An administrator using a GFS (Grandfather-Father-Son) backup rotation needs to restore the system to the state it was in two months previously. How many tape sets are required to perform this operation?

- A. 1
- B. 3
- C. 4
- D. 2

**Correct Answer:** A

**Section:** (none)

**Explanation**

**Explanation/Reference:**

#### **QUESTION 47**

An extremely destructive worm has been reported by major vendors and patches are available to prevent security breaches. According to BEST practices, how should security patches and security hot fixes be applied?

- A. assess the need for particular patches or hot fixes and if required, test them prior to installation on a UAT (User Acceptance Testing) system
- B. check to see if the security patches or hot fixes are needed; apply the appropriate patches or hot fixes immediately to the most vulnerable servers
- C. immediately apply all patches that come from the vendor
- D. check to see if the security patches or hot fixes are needed; apply the appropriate patches or hot fixes immediately to non-critical production servers

**Correct Answer:** A

**Section:** (none)

**Explanation**

**Explanation/Reference:**

#### **QUESTION 48**

Four identical servers are being configured and installed. The last server fails during the operating system install. The other three install normally. Which two are the BEST ways to troubleshoot this problem? (Select TWO)

- A. format and reinstall the operating system
- B. run a hardware diagnostic utility
- C. remove and replace optional and additional components, one at a time
- D. remove and replace all optional and additional components from other server "Pass Any Exam. Any Time." - [www.actualtests.com](http://www.actualtests.com) 16

**Correct Answer:** BC

**Section:** (none)

**Explanation**

**Explanation/Reference:**

#### **QUESTION 49**

Users are complaining that response times for an application are unacceptable during their busiest time. The baselines for this server indicate that the number of page faults have increased to unacceptable levels. Which action would resolve the bottleneck?

- A. replace the 100 MB NIC with a 1 GB NIC
- B. install faster CPUs
- C. install more memory
- D. install a RAID controller

**Correct Answer:** C

**Section:** (none)



**Explanation****Explanation/Reference:****QUESTION 50**

The HR department with Linux based servers reports data retrieval is very slow. Which utility can be used to pinpoint the segment of the network or server that is causing the slow retrieval?

- A. tracert
- B. ipconfig
- C. iptrace
- D. traceroute
- E. ping

**Correct Answer:** D

**Section:** (none)

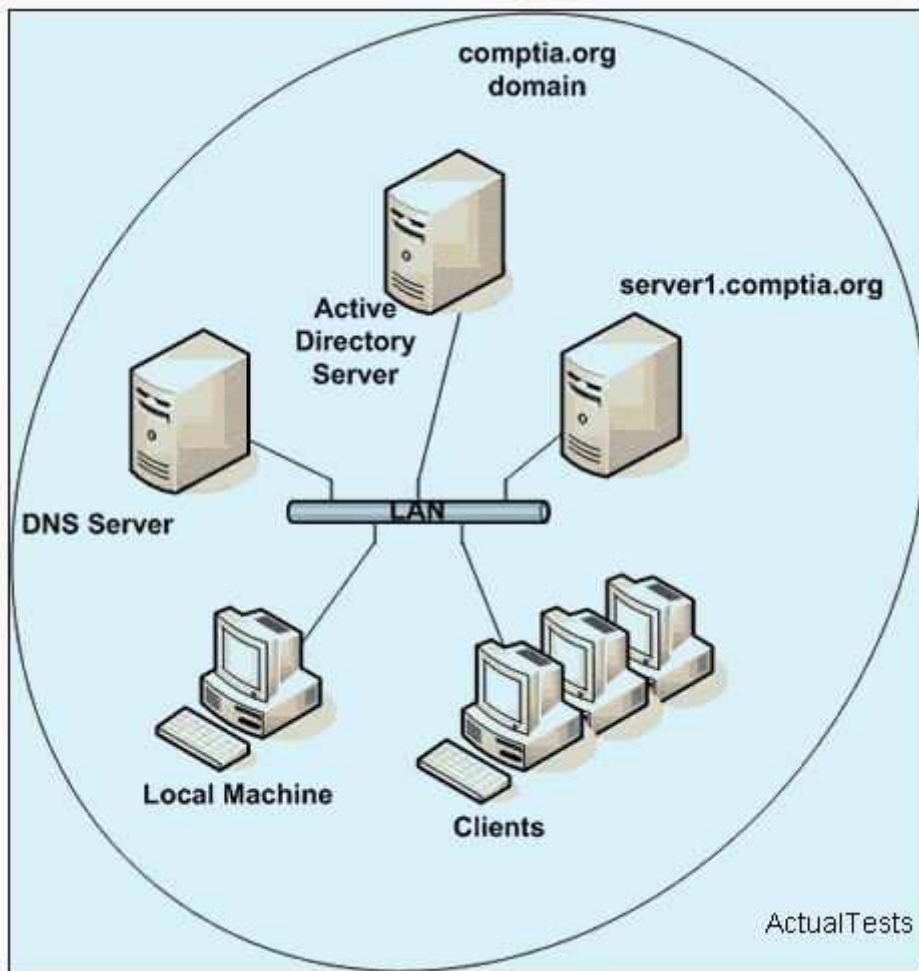
**Explanation****Explanation/Reference:****QUESTION 51**

Click the Exhibit button.

From a local machine, connectivity with a server named server1.comptia.org is checked. It cannot be reached, but it can be accessed via the IP address. The DNS server is checked and everything seems to be functioning correctly.

Which of the following is the MOST common cause of this error?

"Pass Any Exam. Any Time." - [www.actualtests.com](http://www.actualtests.com) 17



- A. The DNS server is down.
- B. The local DNS client is stopped.
- C. The local DNS cache is full.
- D. The server is down.
- E. The local DNS cache is corrupted.

**Correct Answer:** E

**Section:** (none)

**Explanation**

**Explanation/Reference:**

#### QUESTION 52

A company has a clustered environment consisting of two servers (primary and standby), an external joint storage array, a tape library to back up all data, and a UPS (Uninterruptible Power Supply) unit. In which order should these devices be powered on for POST, so all systems will recognize the devices?

- A. UPS (Uninterruptible Power Supply)
- tape library
- storage array
- "Pass Any Exam. Any Time." - www.actualtests.com 18
- primary server
- standby server

- B. storage array  
tape library  
standby server  
primary server  
UPS (Uninterruptible Power Supply)
- C. primary server  
standby server  
storage array  
tape library  
UPS (Uninterruptible Power Supply)
- D. UPS (Uninterruptible Power Supply)  
storage array  
primary server  
standby server  
tape library

**Correct Answer: A**

**Section: (none)**

**Explanation**

**Explanation/Reference:**

#### **QUESTION 53**

To realize the full benefit of using hardware that supports eight processors, an operating system must be selected that supports which capability?

- A. SNR
- B. SMP
- C. SNMP
- D. SMTP

**Correct Answer: B**

**Section: (none)**

**Explanation**

**Explanation/Reference:**

#### **QUESTION 54**

A company has a clustered environment consisting of two servers (primary and standby), an external joint storage array, a tape library to back up all data, and a UPS (Uninterruptible Power Supply) unit. In which order should these devices be powered on for POST, so all systems will recognize the devices?

- A. storage array  
tape library  
standby server  
"Pass Any Exam. Any Time." - www.actualtests.com 19  
primary server  
UPS (Uninterruptible Power Supply)
- B. primary server  
standby server  
storage array  
tape library  
UPS (Uninterruptible Power Supply)
- C. UPS (Uninterruptible Power Supply)  
tape library

storage array  
primary server  
standby server

- D. UPS (Uninterruptible Power Supply)  
storage array  
primary server  
standby server  
tape library

**Correct Answer:** C

**Section:** (none)

**Explanation**

**Explanation/Reference:**

#### **QUESTION 55**

Which type of UPS (Uninterruptible Power Supply) system allows for correction of brownout and surge conditions without depleting the batteries?

- A. line interactive UPS (Uninterruptible Power Supply)
- B. offline UPS (Uninterruptible Power Supply)
- C. online UPS (Uninterruptible Power Supply)
- D. parallel online UPS (Uninterruptible Power Supply)

**Correct Answer:** A

**Section:** (none)

**Explanation**

**Explanation/Reference:**

#### **QUESTION 56**

A server was recently upgraded from a DAT (Digital Audio Tape) to a DLT (Digital Linear Tape) tape backup system. There is a catastrophic loss of data. The data need to be restored from an older DAT (Digital Audio Tape) tape. Which of the following is needed?

- A. a DLT (Digital Linear Tape) tape drive, with DLT (Digital Linear Tape) drivers
- B. a DAT (Digital Audio Tape) tape drive, with DAT (Digital Audio Tape) drivers
- C. a DAT (Digital Audio Tape)-to-DLT (Digital Linear Tape) converter "Pass Any Exam. Any Time." - [www.actualtests.com](http://www.actualtests.com) 20
- D. a DLT (Digital Linear Tape) tape drive, with DAT (Digital Audio Tape) drivers

**Correct Answer:** B

**Section:** (none)

**Explanation**

**Explanation/Reference:**

#### **QUESTION 57**

A company purchases a new file server. The system administrator attempts to start the new server. However, during the POST the server fails to boot and emits a series of beeps. Which action should be taken FIRST?

- A. power off the server, wait five minutes, and restart the server
- B. use a POST diagnostics board to decipher the error message

- C. refer to the manufacturer documentation to decipher the error message
- D. call the manufacturer with the error/beep code

**Correct Answer: C**

**Section: (none)**

**Explanation**

**Explanation/Reference:**

#### **QUESTION 58**

A customer requires a server that will use the maximum amount of storage space possible while obtaining the greatest performance. Fault tolerance is not an issue for this installation. Which of the following is the BEST RAID solution for the server?

- A. Ultra2 Wide SCSI using RAID 5
- B. Ultra 160 SCSI using RAID 1
- C. Ultra 160 SCSI using RAID 0
- D. Ultra2 Wide SCSI using RAID 0+1

**Correct Answer: C**

**Section: (none)**

**Explanation**

**Explanation/Reference:**

#### **QUESTION 59**

Where is the N\_port located in a Fibre Channel configuration?

- A. main port
- B. termination card
- C. randomly defined memory address
- D. virtual connection

**Correct Answer: B**

**Section: (none)**

**Explanation**

**Explanation/Reference:**

"Pass Any Exam. Any Time." - [www.actualtests.com](http://www.actualtests.com) 21

#### **QUESTION 60**

Where can information be found regarding how to check the current version of the BIOS and compare it to recent revisions?

- A. the operating system manufacturer's website
- B. the website of the BIOS manufacturer
- C. the website of the system board manufacturer
- D. the server log files

**Correct Answer: C**

**Section: (none)**

**Explanation**

**Explanation/Reference:**

**QUESTION 61**

A "Frankenstein" test server is being built from the used parts bin at your company. All component functionality is questionable. Which of the following is the BEST way to proceed?

- A. build the server from components after they are pretested in known good systems
- B. test each set of components in groups: all the NICs, all the RAM, all the power supplies, all the drives
- C. populate the entire server with RAM, redundant power, all NICs, video, and a RAID array to isolate the faults as quickly as possible
- D. install each component and test the basics of the entire system by subsets, several times

**Correct Answer: A**

**Section: (none)**

**Explanation**

**Explanation/Reference:**

**QUESTION 62**

The connection of external storage arrays to servers via Fibre Channel can be provided at connections of which two rates? (Select TWO)

- A. 2 Gbps
- B. 5 Gbps
- C. 10 Gbps
- D. 1 Gbps

**Correct Answer: AD**

**Section: (none)**

**Explanation**

**Explanation/Reference:**

**QUESTION 63**

A new 72 GB array of new storage needs to be created on a customer Web server's existing two SCSI drives. The current disks are 18 GB each. The new disks should remain the same size.

"Pass Any Exam. Any Time." - [www.actualtests.com](http://www.actualtests.com) 22

Which RAID standard is the MOST suitable and how many disks are required?

- A. RAID 5 with 5 disks
- B. RAID 5 with 4 disks
- C. RAID 10 with 4 disks
- D. RAID 10 with 5 disks

**Correct Answer: A**

**Section: (none)**

**Explanation**

**Explanation/Reference:**

**QUESTION 64**

Which two statements are true about PCI bus mastering? (Select TWO)

- A. It enables multiple devices to take over the bus without locking each other out.
- B. It enables automatic identification and allocation of resources to system devices.
- C. It enables external devices to be connected to an internal PCI bus.
- D. It enables the controller connected to the bus to communicate directly with other devices without going through the CPU.

**Correct Answer:** AD

**Section:** (none)

**Explanation**

**Explanation/Reference:**

#### **QUESTION 65**

When configuring hard drives in an external SAN (Storage Area Network) attached storage array, from where should the new drive array be created?

- A. every server in the SAN (Storage Area Network), whether they will use this array or not
- B. Drive array information comes preconfigured on the drives.
- C. every server in the SAN (Storage Area Network) that will use this particular array
- D. one server in the SAN (Storage Area Network)

**Correct Answer:** D

**Section:** (none)

**Explanation**

**Explanation/Reference:**

#### **QUESTION 66**

A new SAN (Storage Area Network) that uses Fibre Channel technology is being implemented. Users utilize the IP network to connect to servers.

The servers must use the \_\_\_\_\_ to connect to the SAN (Storage Area Network).

- A. SCSI BUS  
"Pass Any Exam. Any Time." - www.actualtests.com 23
- B. Fibre Channel Fabric
- C. Fibre Channel Bus
- D. Ethernet

**Correct Answer:** B

**Section:** (none)

**Explanation**

**Explanation/Reference:**

#### **QUESTION 67**

A UPS (Uninterruptible Power Supply) is being selected for a remote office. The correct size UPS (Uninterruptible Power Supply) needs to be determined. Which formula should be used to determine the load requirements?

- A.  $kVA = Volts \times Amperes$

- B.  $VA = kW \times 1000 \times \text{Amperes}$
- C.  $VA = \text{Volts} \times \text{Amperes}$
- D.  $\text{Watts} = \text{Current} \times \text{Voltage}$

**Correct Answer:** C

**Section:** (none)

**Explanation**

**Explanation/Reference:**

#### **QUESTION 68**

A server has twelve 72 GB drives configured in a RAID 5 array, with one drive as a hot spare. It experiences a failure of one of the drives in the array. Which action should be taken?

- A. ensure the array has completed rebuilding, then replace the failed drive
- B. replace the failed drive and restore parity data from backup
- C. swap the failed drive with the hot spare and rebuild the array
- D. replace the failed drive and rebuild the array

**Correct Answer:** A

**Section:** (none)

**Explanation**

**Explanation/Reference:**

#### **QUESTION 69**

Which three are advantages of an iSCSI implementation? (Select THREE)

- A. is scalable over long distances
- B. is based on familiar network technology and therefore reduces training and staffing costs
- C. utilizes an already proven transport technology
- D. reduces LAN congestion

**Correct Answer:** ABC

**Section:** (none)

**Explanation**

**Explanation/Reference:**

"Pass Any Exam. Any Time." - [www.actualtests.com](http://www.actualtests.com) 24

#### **QUESTION 70**

When configuring hard drives in an external SAN (Storage Area Network) attached storage array, from where should the new drive array be created?

- A. Drive array information comes preconfigured on the drives.
- B. every server in the SAN (Storage Area Network), whether they will use this array or not
- C. every server in the SAN (Storage Area Network) that will use this particular array
- D. one server in the SAN (Storage Area Network)

**Correct Answer:** D

**Section:** (none)

**Explanation**



**Explanation/Reference:**

**QUESTION 71**

A new SCSI adapter is being installed in a file server. The installation seems to go well. However, when the server is started, the boot process fails before the operating system can load. Which action would MOST likely enable the server to start successfully?

- A. downloading and installing the latest driver for the SCSI adapter
- B. reinstalling the driver for the SCSI card
- C. disabling the SCSI adapter's BIOS
- D. upgrading the SCSI card's firmware

**Correct Answer: C**

**Section: (none)**

**Explanation**

**Explanation/Reference:**

**QUESTION 72**

Which of the following is the primary benefit of 64-bit processors?

- A. increased software availability
- B. better use of power
- C. ability to address more memory
- D. increased use of the floating point stack for calculations
- E. increased performance of 32-bit applications

**Correct Answer: C**

**Section: (none)**

**Explanation**

**Explanation/Reference:**

**QUESTION 73**

"Pass Any Exam. Any Time." - [www.actualtests.com](http://www.actualtests.com) 25

A new rack mount server is being planned for a server room. Twelve inches (30.5 cm) are currently available in an existing equipment rack. Which of the following is the maximum size server that can be installed into the existing rack?

- A. 8U
- B. 2U
- C. 4U
- D. 6U

**Correct Answer: D**

**Section: (none)**

**Explanation**

**Explanation/Reference:**

**QUESTION 74**

A customer wants to increase the speed of their network connection for their new payroll server. The server is

running TCP/IP protocol for all network communications. The server has a 72 GB SCSI hard drive, 1 GB of memory, a 2.4 Xeon processor, and a 10/100 network card. The network switch is a new 48-port 10/100 switch. Which of the following provides the fastest connection?

- A. installing two network cards and configuring adapter teaming
- B. configuring the switch for Layer 3 switching
- C. adding a second TCP/IP address and configuring HSRP (Hot Standby Router Protocol) on the server
- D. upgrading the server's network card to a gigabit network adapter

**Correct Answer:** A

**Section:** (none)

**Explanation**

**Explanation/Reference:**

#### **QUESTION 75**

A technician needs to install the first SCSI controller in an application server. The SCSI card is factory-configured with a SCSI ID of 1. Which SCSI ID should the technician configure the card before installation?

- A. 7
- B. 4
- C. 1
- D. 0

**Correct Answer:** A

**Section:** (none)

**Explanation**

**Explanation/Reference:**

#### **QUESTION 76**

"Pass Any Exam. Any Time." - [www.actualtests.com](http://www.actualtests.com) 26

RAID needs to be configured for a high-performance, highly available database server. RAID 10 is selected. Which of the following is the minimum number of disks that RAID 10 requires?

- A. 4
- B. 5
- C. 3
- D. 2

**Correct Answer:** A

**Section:** (none)

**Explanation**

**Explanation/Reference:**

#### **QUESTION 77**

Which RAID level stores identical copies of the logical partitions on an even number of DUPLICATE logical disks?

- A. RAID 1
- B. RAID 0

- C. RAID 3
- D. RAID 5

**Correct Answer:** A

**Section:** (none)

**Explanation**

**Explanation/Reference:**

#### **QUESTION 78**

The current data center has run out of space. A room that is located next to the existing data center is then used to house two racks containing six servers. Six months later, physical housekeeping is performed as part of a mid-year maintenance plan. Which environmental condition discovered in the room is LEAST critical?

- A. The anti-static carpet has been removed resulting in a bare painted concrete floor.
- B. There are discolored ceiling tiles near the middle of the room.
- C. A wet pipe water-based sprinkler system has been installed above the racks.
- D. Large amounts of dust have accumulated in the corners of the room.

**Correct Answer:** A

**Section:** (none)

**Explanation**

**Explanation/Reference:**

#### **QUESTION 79**

A server computer has a SCSI card installed. The SCSI card supports up to seven devices and has the SCSI ID 7. There are three hard drives connected to the card with IDs 0, 1, and 2.

A CD-ROM and a tape drive need to be added to the SCSI card. The CD-ROM must have a

"Pass Any Exam. Any Time." - [www.actualtests.com](http://www.actualtests.com) 27  
higher priority than the tape drive, or any other device that might be connected in the future.

Which SCSI ID should be assigned to the CD-ROM?

- A. 1
- B. 5
- C. 6
- D. 3

**Correct Answer:** D

**Section:** (none)

**Explanation**

**Explanation/Reference:**

#### **QUESTION 80**

A company server requires a seven-day backup schedule. The server has 34 GB of data to back up. The backup device is a 35/70 DLT (Digital Linear Tape) drive.

Which backup schedule takes the LEAST time to perform?

- A. one full, six incremental
- B. seven full
- C. two full, five incremental
- D. one full, six differential

**Correct Answer:** A

**Section:** (none)

**Explanation**

**Explanation/Reference:**

#### **QUESTION 81**

There are POST errors when a server is powered on. Which action should be taken FIRST to determine what might be the problem?

- A. call the server's manufacturer for technical support
- B. examine the server's operating systems logs for subsystem errors
- C. look up the errors codes in the server's documentation
- D. search the server manufacturer website for information

**Correct Answer:** C

**Section:** (none)

**Explanation**

**Explanation/Reference:**

#### **QUESTION 82**

When using the system configuration utility to prepare a drive or drive array for installation of the operating system, which two file systems are NEVER options? (Select TWO)

"Pass Any Exam. Any Time." - [www.actualtests.com](http://www.actualtests.com) 28

- A. UDF (Universal Disk Format)
- B. NSS (Novell Storage Services)
- C. HPFS (High Performance File System)
- D. LFS (Log-structured File System)
- E. CDFS (CD-ROM File System)
- F. HFS (Hierarchical File System)

**Correct Answer:** AE

**Section:** (none)

**Explanation**

**Explanation/Reference:**

#### **QUESTION 83**

A company plans to upgrade all the servers on a site from their current hard drive devices to Serial ATA drives. This is a major upgrade that will affect all the servers and the clients who depend on the network services and the critical data they provide. Which action should be taken before attempting this upgrade?

- A. set up an isolated server, install SATA drives identical to the ones to be used for the upgrade, and run a pilot program of testing prior to deployment

- B. develop an upgrade checklist that includes obtaining the latest drivers, operating system updates, ESD (electrostatic discharge) best practices, and downtime schedules
- C. make sure that each server has a full and redundant backup of the operating system, applications, and data, and update the servers
- D. create a performance baseline on each server to be compared after the upgrade, and update the servers

**Correct Answer:** A

**Section:** (none)

**Explanation**

**Explanation/Reference:**

#### **QUESTION 84**

Which two are key factors that make a SAN (Storage Area Network) different from a NAS (Network Attached Storage)? (Select TWO)

- A. A SAN (Storage Area Network) is generally less expensive.
- B. A SAN (Storage Area Network) has a simpler setup process, generally only requiring basic network setup and adding of users.
- C. A SAN (Storage Area Network) allows for loading of applications that run on the server.
- D. A SAN (Storage Area Network) does not use a proprietary or a slimmed down version of an operating system.

**Correct Answer:** CD

**Section:** (none)

**Explanation**

**Explanation/Reference:**

"Pass Any Exam. Any Time." - [www.actualtests.com](http://www.actualtests.com) 29

#### **QUESTION 85**

Which two statements are true about software-based RAID? (Select TWO)

- A. Hard disk make and model do not have to be the same when using software-based RAID.
- B. Hot-plug and hot-spare features are available with software-based RAID.
- C. Intervention is not required to recover fully from a drive failure.
- D. CPU load is increased when using software-based RAID.

**Correct Answer:** AD

**Section:** (none)

**Explanation**

**Explanation/Reference:**

#### **QUESTION 86**

Which two are typically used to connect multiple SAN (Storage Area Network) locations? (Select TWO)

- A. Gigabit Ethernet
- B. iSCSI
- C. FCIP
- D. Ultra 320

**Correct Answer:** BC

**Section: (none)**

**Explanation**

**Explanation/Reference:**

**QUESTION 87**

Users are complaining that response times for an application are unacceptable during their busiest time. The baselines for this server indicate that the number of page faults have increased to unacceptable levels. Which action would resolve the bottleneck?

- A. install a RAID controller
- B. install more memory
- C. install faster CPUs
- D. replace the 100 MB NIC with a 1 GB NIC

**Correct Answer: B**

**Section: (none)**

**Explanation**

**Explanation/Reference:**

**QUESTION 88**

A server is unable to boot after a BIOS upgrade. The video display screen is blank and the system is unresponsive. Which of the following has MOST likely occurred and which step should be taken

"Pass Any Exam. Any Time." - [www.actualtests.com](http://www.actualtests.com) 30  
FIRST to correct this problem?

- A. The BIOS is corrupt; refer to documentation for server recovery procedures.
- B. The boot hard drive failed; boot from the floppy drive and start hard disk recovery procedures.
- C. The BIOS update failed; insert the flash BIOS boot disk and restart the BIOS upgrade procedure.
- D. The power supply is bad; remove the server cover and start the process of troubleshooting or replacing the power supply.

**Correct Answer: A**

**Section: (none)**

**Explanation**

**Explanation/Reference:**

**QUESTION 89**

Which of the following is a benefit of a two-node cluster?

- A. A two-node cluster using a shared SCSI storage device provides the quickest way of implementing patch management.
- B. If two disks in the SCSI storage configuration fail, the two-node cluster will allow quick fault recovery.
- C. If one of the cluster members loses power or experiences a hardware failure, the cluster will provide quick fault recovery.
- D. If one of the cluster members corrupts data on the SCSI storage device, data integrity will be maintained by the other cluster member.

**Correct Answer: C**

**Section: (none)**

### **Explanation**

### **Explanation/Reference:**

#### **QUESTION 90**

A failover SQL server attempts to take over for a primary SQL server that continues to function normally, causing an IP address conflict. Which of the following should be checked FIRST?

- A. the timeout value on the failover server
- B. the failover server's account privileges on the primary server
- C. the heartbeat cable between the two servers
- D. the SQL server logs

**Correct Answer: C**

**Section: (none)**

### **Explanation**

### **Explanation/Reference:**

#### **QUESTION 91**

A user logs in remotely to a company server via remote administration software. The server is running Web services but they are stopped due to system errors. The application log files do not

"Pass Any Exam. Any Time." - [www.actualtests.com](http://www.actualtests.com) 31

show any hardware errors. Which action should be taken FIRST to troubleshoot the problem?

- A. check the website of the server's hardware manufacturer
- B. examine the network operating system manual and documentation
- C. restart the server remotely
- D. examine the local system error log
- E. restart the Web services remotely

**Correct Answer: D**

**Section: (none)**

### **Explanation**

### **Explanation/Reference:**

#### **QUESTION 92**

A new switch has recently been installed on the network. The SNMP (Simple Network Management Protocol) manager has not seen any information from the device. Which two default ports should be checked on the firewall? (Select TWO)

- A. 161
- B. 150
- C. 160
- D. 142

**Correct Answer: AC**

**Section: (none)**

### **Explanation**

### **Explanation/Reference:**

**QUESTION 93**

When settings on the SYS: volume of a new server were configured, a misconfiguration occurred and now the server no longer starts up. Which tool is required to recover from the system failure and continue configuration?

- A. Microsoft Windows Installation CD-ROM
- B. ERD recovery diskette set
- C. UNIX/Linux startup diskette or CD-ROM
- D. Novell NetWare CD-ROM

**Correct Answer:** D

**Section:** (none)

**Explanation**

**Explanation/Reference:**

**QUESTION 94**

The RAM in a server needs to be upgraded. The requirement is to use memory that is capable of operating at 1200 MHz and can transfer data up to 10.7 GB/sec. Which type of RAM should be installed on the server?

"Pass Any Exam. Any Time." - [www.actualtests.com](http://www.actualtests.com) 32

- A. BDDR SDRAM
- B. DRAM
- C. DDR SDRAM
- D. RDRAM

**Correct Answer:** D

**Section:** (none)

**Explanation**

**Explanation/Reference:**

**QUESTION 95**

Three file servers, an unmanaged switch, an unmanaged UPS (Uninterruptible Power Supply), one KVM (keyboard/video/mouse) switch, one keyboard, one monitor, and one mouse are installed in a server rack.

How many KVM (keyboard/video/mouse) cable sets are needed to connect the servers to the KVM (keyboard/video/mouse) switch?

- A. four
- B. three
- C. one
- D. two
- E. five

**Correct Answer:** B

**Section:** (none)

**Explanation**

**Explanation/Reference:**



**QUESTION 96**

Which unit of measurement is used to determine the capacity of the UPS (Uninterruptible Power Supply)?

- A. vol-amperes
- B. volts
- C. ohms
- D. capacitance
- E. amperes

**Correct Answer:** A

**Section:** (none)

**Explanation**

**Explanation/Reference:**

**QUESTION 97**

An external Ultra2 RAID storage unit is to be installed during the setup of a new site. Which three actions will likely cause a problem when the external RAID storage unit is installed? (Select THREE)

"Pass Any Exam. Any Time." - [www.actualtests.com](http://www.actualtests.com) 33

- A. using a SCSI cable between one and five meters in length
- B. using passive termination on the enclosure
- C. powering off the RAID subsystem when the server is turned on
- D. connecting the subsystem to the server while it is powered up

**Correct Answer:** BCD

**Section:** (none)

**Explanation**

**Explanation/Reference:**

**QUESTION 98**

Which two actions require an update of a disaster recovery plan? (Select TWO)

- A. moving to a new location
- B. adding workstations to the network
- C. replacing failed hardware
- D. adding new hardware

**Correct Answer:** AD

**Section:** (none)

**Explanation**

**Explanation/Reference:**

**QUESTION 99**

A failover SQL server attempts to take over for a primary SQL server that continues to function normally, causing an IP address conflict. Which of the following should be checked FIRST?

- A. the timeout value on the failover server
- B. the SQL server logs
- C. the failover server's account privileges on the primary server

D. the heartbeat cable between the two servers

**Correct Answer:** D

**Section:** (none)

**Explanation**

**Explanation/Reference:**

#### **QUESTION 100**

Which of the following can be used to collect trends and performance data?

- A. MIB (Management Information Base) browsing
- B. DMI (Desktop Management Interface) requesting
- C. SNMP (Simple Network Management Protocol) Traps
- D. regular SNMP (Simple Network Management Protocol) polling

**Correct Answer:** D

**Section:** (none)

**Explanation**

**Explanation/Reference:**

"Pass Any Exam. Any Time." - [www.actualtests.com](http://www.actualtests.com) 34

#### **QUESTION 101**

During a new server installation, which of the following is the MOST common setup problem?

- A. flashing the BIOS
- B. incompatible memory
- C. operating system HCL (Hardware Compatibility List)
- D. access to power and network connections

**Correct Answer:** C

**Section:** (none)

**Explanation**

**Explanation/Reference:**

#### **QUESTION 102**

Staggering memory reads/writes between two or more banks of RAM is:

- A. double data rate.
- B. random access.
- C. bus mastering.
- D. memory interleaving.
- E. registering memory.

**Correct Answer:** D

**Section:** (none)

**Explanation**

**Explanation/Reference:**

**QUESTION 103**

During a test of the disaster recovery plan, it is discovered that some servers were restored with other servers' data. Which action is MOST likely to improve disaster recovery in the future?

- A. implement a differential backup strategy
- B. implement a media rotation scheme for offsite tapes
- C. create a database that contains the backup logs stored on an incremental server
- D. maintain a printed tape backup report

**Correct Answer:** D

**Section:** (none)

**Explanation**

**Explanation/Reference:**

**QUESTION 104**

A server was recently installed with all necessary hardware and software. Before placing the server into service, a(n) \_\_\_\_\_ should be created.

- A. System Monitor log
- B. Performance Monitor log  
"Pass Any Exam. Any Time." - [www.actualtests.com](http://www.actualtests.com) 35
- C. performance baseline
- D. application backup

**Correct Answer:** C

**Section:** (none)

**Explanation**

**Explanation/Reference:**

**QUESTION 105**

Which two are advantages of Serial ATA? (Select TWO)

- A. Serial ATA cables allow better airflow than standard ATA cables.
- B. Serial ATA delivers a maximum of 133 Mbps of performance.
- C. Serial ATA has a very fast 16-bit bus width.
- D. Serial ATA is a point-to-point connection that eliminates master/slave issues.

**Correct Answer:** AD

**Section:** (none)

**Explanation**

**Explanation/Reference:**

**QUESTION 106**

A database server has three 30 GB SCSI hard drives. A RAID array needs to be implemented that provides for the fastest I/O performance. Which RAID technology should be used?

- A. RAID 5
- B. RAID 0+1
- C. RAID 1

D. RAID 0

**Correct Answer:** D

**Section:** (none)

**Explanation**

**Explanation/Reference:**

**QUESTION 107**

Which backup solution is the MOST appropriate for backing up a payload from a corporation with multiple servers and approximately 300 GB of data?

- A. standalone DAT (Digital Audio Tape) drives configured for each server
- B. a tape library unit with more the one SDLT (SuperDLT) drive configured for all servers
- C. a tape library unit with more then one DAT (Digital Audio Tape) drive configured for all servers
- D. a standalone LTO (Linear Tape-Open) drive configured for all servers
- E. multiple AIT (Advanced Intelligent Tape) drives configured for each server

**Correct Answer:** B

**Section:** (none)

**Explanation**

**Explanation/Reference:**

"Pass Any Exam. Any Time." - [www.actualtests.com](http://www.actualtests.com) 36

**QUESTION 108**

Which two are methods of connecting storage data between separate locations? (Select TWO)

- A. VoIP
- B. Fibre Channel
- C. FCIP
- D. iSCSI

**Correct Answer:** CD

**Section:** (none)

**Explanation**

**Explanation/Reference:**

**QUESTION 109**

While a server remains powered on, PCI hot plug technology is utilized for which two purposes? (Select TWO)

- A. to maintain server uptime during hardware failures
- B. to improve the connectivity of PCI hardware within a server environment
- C. to replace failed or aging adapters/controllers with new adapters/controllers
- D. to upgrade older generation controllers with state of the art controllers

**Correct Answer:** CD

**Section:** (none)

**Explanation**

**Explanation/Reference:**

**QUESTION 110**

Which three are benefits of using blade servers? (Select THREE)

- A. reduced energy consumption
- B. reduced space requirements
- C. improved server management
- D. increased server performance
- E. increased network performance

**Correct Answer:** ABC

**Section:** (none)

**Explanation**

**Explanation/Reference:**

**QUESTION 111**

An Ultra SCSI-3 adapter is being installed to support several external Ultra SCSI-3 devices. How many pins should the Ultra SCSI-3 cable have?

- A. 25
  - B. 34
  - C. 50
  - D. 68
- "Pass Any Exam. Any Time." - [www.actualtests.com](http://www.actualtests.com) 37

**Correct Answer:** D

**Section:** (none)

**Explanation**

**Explanation/Reference:**

**QUESTION 112**

Which two are Fibre Channel topologies? (Select TWO)

- A. fabric
- B. mesh
- C. star
- D. bus
- E. arbitrated loop

**Correct Answer:** AE

**Section:** (none)

**Explanation**

**Explanation/Reference:**

**QUESTION 113**

Users suddenly lose connectivity to an existing server. The server technician can ping the loopback address and the server's own IP address. However, no other device on the network can be pinged. The LAN cable is plugged in. Which of the following should the server technician check next?

- A. hub or switch
- B. DNS server
- C. network link LEDs
- D. subnet mask
- E. router or gateway

**Correct Answer:** C

**Section:** (none)

**Explanation**

**Explanation/Reference:**

#### **QUESTION 114**

A customer has a system with two 9 GB drives that are hardware mirrored on an Ultra SCSI RAID controller. Using the same size drives, they want to plan for 63 GB of storage space. Which of the following configurations offers the MOST efficient solution?

- A. RAID 5 with twelve additional drives
  - B. RAID 5 with seven additional drives
  - C. RAID 0+1 with seven additional drives
  - D. RAID 0+1 with twelve additional drives
- "Pass Any Exam. Any Time." - [www.actualtests.com](http://www.actualtests.com) 38

**Correct Answer:** D

**Section:** (none)

**Explanation**

**Explanation/Reference:**

#### **QUESTION 115**

A new SAN (Storage Area Network) that uses Fibre Channel technology is being implemented. Users utilize the IP network to connect to servers. The servers must use the \_\_\_\_\_ to connect to the SAN (Storage Area Network).

- A. Ethernet
- B. SCSI BUS
- C. Fibre Channel Bus
- D. Fibre Channel Fabric

**Correct Answer:** D

**Section:** (none)

**Explanation**

**Explanation/Reference:**

#### **QUESTION 116**

During a new server installation, which of the following is the MOST common setup problem?

- A. incompatible memory
- B. flashing the BIOS
- C. operating system HCL (Hardware Compatibility List)
- D. access to power and network connections

**Correct Answer:** C

**Section:** (none)

**Explanation**

**Explanation/Reference:**

**QUESTION 117**

Which of the following is the primary purpose of the battery on a RAID controller?

- A. to power the RAID sync clock
- B. to prevent loss of the RAID controller settings
- C. to prevent loss of data stored in the write cache
- D. to prevent loss of the drive array configuration settings
- E. to prevent loss of the IDs for the drives contained within the arrays

**Correct Answer:** C

**Section:** (none)

**Explanation**

**Explanation/Reference:**

"Pass Any Exam. Any Time." - www.actualtests.com 39

**QUESTION 118**

A failover SQL server attempts to take over for a primary SQL server that continues to function normally, causing an IP address conflict. Which of the following should be checked FIRST?

- A. the timeout value on the failover server
- B. the SQL server logs
- C. the heartbeat cable between the two servers
- D. the failover server's account privileges on the primary server

**Correct Answer:** C

**Section:** (none)

**Explanation**

**Explanation/Reference:**

**QUESTION 119**

After upgrading the SNMP (Simple Network Management Protocol) protocol, the \_\_\_\_\_ can be looked up. It is a sequence of integers that uniquely identifies a path to a managed object.

- A. community name
- B. register
- C. MIB (Management Information Base)
- D. OID (ObjectIdentifier)

**Correct Answer:** D

**Section:** (none)

**Explanation**

**Explanation/Reference:**

**QUESTION 120**

Which three operating systems support 64-bit processing? (Select THREE)

- A. Mac OS X Panther
- B. Red Hat Enterprise Linux 3
- C. Sun Solaris 9
- D. Windows Server 2003 Standard Edition

**Correct Answer:** ABC

**Section:** (none)

**Explanation**

**Explanation/Reference:**

**QUESTION 121**

Which two statements are true about Ultra 160 SCSI and Ultra 320 SCSI? (Select TWO)

- A. Ultra 320 offers 2x the cable length and 2x the bus width.
- B. Ultra 320 offers 2x the data transfer rate and supports 2x the maximum number of devices.
- C. Ultra 320 offers 2x the data transfer rate and supports the same number of devices.  
"Pass Any Exam. Any Time." - www.actualtests.com 40
- D. Ultra 320 offers the same cable length and the same bus width.

**Correct Answer:** CD

**Section:** (none)

**Explanation**

**Explanation/Reference:**

**QUESTION 122**

A large corporation is concerned about the amount of time it takes to back up their main file server. They are also concerned that their IT technician frequently forgets to change the backup tapes, thereby leaving the company open to data loss. Which backup system would solve both problems?

- A. optical storage
- B. tape library
- C. RAID
- D. disk to disk to tape

**Correct Answer:** B

**Section:** (none)

**Explanation**

**Explanation/Reference:**

**QUESTION 123**

A corporate file server must be shut down for an upgrade of an internal tape drive. Which sequence of steps should be performed before the upgrade?

- A. notify users before shutdown; shut down applications; shut down the peripherals; shut down the server
- B. perform a backup; notify users before shutdown; shut down the peripherals; shut down the server
- C. have all users log off the server; shut down all applications; back up the server; shut down the server; shut



down the peripherals

D. perform a backup; notify users before shutdown; shut down the server and the peripherals together

**Correct Answer:** C

**Section:** (none)

**Explanation**

**Explanation/Reference:**

#### **QUESTION 124**

Which throughput does a 33 MHz, 33-bit bus have?

A. 256 Mbps

B. 264 Mbps

C. 450 Mbps

"Pass Any Exam. Any Time." - [www.actualtests.com](http://www.actualtests.com) 41

D. 132 Mbps

**Correct Answer:** D

**Section:** (none)

**Explanation**

**Explanation/Reference:**

#### **QUESTION 125**

A server was recently installed with all necessary hardware and software. Before placing the server into service, a(n) \_\_\_\_\_ should be created.

A. Performance Monitor log

B. application backup

C. performance baseline

D. System Monitor log

**Correct Answer:** C

**Section:** (none)

**Explanation**

**Explanation/Reference:**

#### **QUESTION 126**

A new switch has recently been installed on the network. The SNMP (Simple Network Management Protocol) manager has not seen any information from the device. Which two are possible causes of this problem? (Select TWO)

A. The MIB (Management Information Base) needs to be installed.

B. Firmware on the device needs to be updated.

C. The SNMP (Simple Network Management Protocol) manager needs to be configured.

D. SNMP (Simple Network Management Protocol) community needs to be configured.

**Correct Answer:** AD

**Section:** (none)

**Explanation**

**Explanation/Reference:**

**QUESTION 127**

A company's small e-commerce website must be continuously available to customers. The website must not go down, even for maintenance or patching. Which of the following meets this requirement?

- A. an Active/Active Web cluster using an application level load balancer
- B. a 32-node cluster with multiple redundant connections
- C. an Active/Passive Web cluster using an application level load balancer
- D. a Beowulf cluster

**Correct Answer: A**

**Section: (none)**

**Explanation**

**Explanation/Reference:**

"Pass Any Exam. Any Time." - [www.actualtests.com](http://www.actualtests.com) 42

**QUESTION 128**

Without bringing the server down, which of the following is the FIRST step in removing a NIC that is in a hot-plug PCI slot?

- A. power off the PCI slot
- B. unload the TCP/IP stack
- C. reload the NIC driver
- D. disconnect the WOL (Wake-On-LAN) cable from the NIC

**Correct Answer: A**

**Section: (none)**

**Explanation**

**Explanation/Reference:**

**QUESTION 129**

After a pre-installation walkthrough, the server technician concludes that the power outlets, rack dimensions, physical security, and network cabling are all acceptable. However, one factor is missing in the pre-installation planning, so the technician decides not to install the server in this location.

Which factor was not included in the pre-installation planning?

- A. location
- B. electrostatic discharge
- C. wall materials
- D. environment

**Correct Answer: D**

**Section: (none)**

**Explanation**

**Explanation/Reference:**

**QUESTION 130**

A hardware RAID array is in need of additional drive space. Which two steps can be taken when planning for expansion of the array? (Select TWO)

- A. make sure the new SCSI drives have at least double the drive space of the old ones
- B. determine if a Fibre Channel will support physical expansion
- C. see if an update for the controller BIOS and the array configuration utility is available
- D. make sure the controller will support additional drives

**Correct Answer:** CD

**Section:** (none)

**Explanation**

**Explanation/Reference:**

"Pass Any Exam. Any Time." - [www.actualtests.com](http://www.actualtests.com) 43

#### **QUESTION 131**

Which two are key factors that make a SAN (Storage Area Network) different from a NAS (Network Attached Storage)? (Select TWO)

- A. A SAN (Storage Area Network) is generally less expensive.
- B. A SAN (Storage Area Network) has a simpler setup process, generally only requiring basic network setup and adding of users.
- C. A SAN (Storage Area Network) does not use a proprietary or a slimmed down version of an operating system.
- D. A SAN (Storage Area Network) allows for loading of applications that run on the server.

**Correct Answer:** CD

**Section:** (none)

**Explanation**

**Explanation/Reference:**

#### **QUESTION 132**

During a new server installation, which of the following is the MOST common setup problem?

- A. access to power and network connections
- B. operating system HCL (Hardware Compatibility List)
- C. flashing the BIOS
- D. incompatible memory

**Correct Answer:** B

**Section:** (none)

**Explanation**

**Explanation/Reference:**

#### **QUESTION 133**

Which statement is true about symmetrical multi-processing?

- A. Tasks are distributed between all processors.
- B. All tasks are buffered by the processor cache.
- C. Tasks are mirrored in RAM.
- D. Tasks are mirrored to the primary master HDD.

E. Certain tasks are handled by a specific processor.

**Correct Answer:** A

**Section:** (none)

**Explanation**

**Explanation/Reference:**

#### **QUESTION 134**

A company has 260 clients and one server. The server appears to be compromised by a security hole. The operating system manufacturer has provided a security patch. Which two actions should be taken next? (Select TWO)

"Pass Any Exam. Any Time." - [www.actualtests.com](http://www.actualtests.com) 44

- A. contact the system supervisor and ask about the installation process
- B. backup the system completely and install the patch
- C. install the patch on the server directly
- D. call the manufacturer's security department and inquire about the installation process
- E. send an email to the manufacturer helpdesk to check on compatibility with the company's hardware
- F. test the patch in a lab before installing it on the server

**Correct Answer:** BF

**Section:** (none)

**Explanation**

**Explanation/Reference:**

#### **QUESTION 135**

A company implements a new policy requiring that all data stored on the servers, regardless of their RAID level, be secured and locally accessible only to administrators. How does this affect the diagnostic partitions on the servers?

- A. It requires that they be removed.
- B. It requires that the prompt on bootup be eliminated.
- C. It requires that the file system of the partition be converted.
- D. It has no effect, as an administrative login is always required.

**Correct Answer:** A

**Section:** (none)

**Explanation**

**Explanation/Reference:**

#### **QUESTION 136**

Which two are types of multi-processing? (Select TWO)

- A. MPP (Massively Parallel Processor)
- B. SMP (Symmetric Multiprocessing)
- C. SPP (Scalable Parallel Processor)
- D. MSP (Multiprocessing Server Pack)

**Correct Answer:** AB

**Section:** (none)

**Explanation**

**Explanation/Reference:**

**QUESTION 137**

Which three should be documented after upgrading a SCSI RAID controller? (Select THREE)

- A. location slot of the RAID controller
- B. status of the adapter card installation
- C. RAID controller information (warranty, specifications etc.) "Pass Any Exam. Any Time." - [www.actualtests.com](http://www.actualtests.com) 45
- D. disk utilization
- E. installation date
- F. adapter baselines

**Correct Answer:** ACE

**Section:** (none)

**Explanation**

**Explanation/Reference:**

**QUESTION 138**

Which three are characteristics of ASMP (Asymmetrical Multi-Processing)? (Select THREE)

- A. Each processor shares the same memory.
- B. SMP (Symmetrical Multi-Processing) is easier to implement than ASMP.
- C. ASMP is easier to implement than SMP (Symmetrical Multi-Processing).
- D. Each processor is defined to specific tasks.
- E. Each processor maintains individual memory.
- F. Each processor runs all tasks in parallel.

**Correct Answer:** BDE

**Section:** (none)

**Explanation**

**Explanation/Reference:**

**QUESTION 139**

A hardware RAID 5 that is composed of three SCSI disks is installed. The server is booted, but it fails the POST. Which three are possible causes of the problem? (Select THREE)

- A. incorrect configuration of the SCSI BIOS
- B. faulty drivers for the SCSI RAID card
- C. ID conflicts on the SCSI bus
- D. improper termination of the SCSI bus
- E. incomplete initialization of the RAID 5 array

**Correct Answer:** ACD

**Section:** (none)

**Explanation**

**Explanation/Reference:**

**QUESTION 140**

The current data center has run out of space. A room that is located next to the existing data center is then used to house two racks containing six servers. Six months later, physical housekeeping is performed as part of a mid-year maintenance plan. Which environmental condition discovered in the room is LEAST critical?

- A. The anti-static carpet has been removed resulting in a bare painted concrete floor.
- B. Large amounts of dust have accumulated in the corners of the room.  
"Pass Any Exam. Any Time." - www.actualtests.com 46
- C. A wet pipe water-based sprinkler system has been installed above the racks.
- D. There are discolored ceiling tiles near the middle of the room.

**Correct Answer: A**

**Section: (none)**

**Explanation**

**Explanation/Reference:**

**QUESTION 141**

A customer wants to increase the performance of an existing server. They are running a very network intensive application and feel that increasing the bandwidth to the network will fix their problem.

They are running two 24-port autosensing 10/100 hubs, tied together with a standard Ethernet crossover cable in port 24. The server is running IPX. After adding a second network card and plugging one card into each hub, they have not seen any performance improvement.

Which two are likely reasons why implementing network adapter teaming has not improved performance? (Select TWO)

- A. Adapter teaming only provides fault tolerance, not additional bandwidth.
- B. Adapter teaming is designed to work with switches.
- C. Adapter teaming only works with IPX when using switches and network cards with special features that support teaming.
- D. Adapter teaming only functions with gigabit network cards.

**Correct Answer: BC**

**Section: (none)**

**Explanation**

**Explanation/Reference:**

**QUESTION 142**

Which type of server is designed to serve as a gateway for communications between clients using C and a mainframe computer?

- A. FTP server
- B. database server
- C. SNA server
- D. fax server

**Correct Answer: C**

**Section: (none)**

**Explanation**

**Explanation/Reference:**

**QUESTION 143**

During the installation of a new server, the following actions are performed:

"Pass Any Exam. Any Time." - [www.actualtests.com](http://www.actualtests.com) 47

Server hardware components are inventoried.

The latest BIOS and firmware are downloaded and applied. The network operating system and patches are loaded.

The after-market tape drive attached to the server fails to initialize. Which of the following is the MOST likely cause of the failure?

- A. The tape drive device driver is not enabled in the system BIOS.
- B. The tape drive is not on the backup software HCL (Hardware Compatibility List).
- C. The network operating system patches are not applied correctly.
- D. The BIOS and firmware upgrades are not properly applied.

**Correct Answer: B**

**Section: (none)**

**Explanation**

**Explanation/Reference:**

**QUESTION 144**

A new processor is installed. The network operating system recognizes the processor and the server is running correctly. Which two additional steps need to be taken? (Select TWO)

- A. document the upgrade
- B. perform a BIOS upgrade
- C. create a new baseline for the server
- D. test and pilot the new processor
- E. send out an email to users

**Correct Answer: AC**

**Section: (none)**

**Explanation**

**Explanation/Reference:**

**QUESTION 145**

Replacing an existing controller with a newer controller that may have different PCI resource requirements (e.g. CHs, F/W) is an example of which type of hot plug technology?

- A. hot upgrade
- B. hot expansion
- C. hot replacement
- D. hot spare

**Correct Answer: A**

**Section: (none)**

**Explanation**

**Explanation/Reference:**

**QUESTION 146**

"Pass Any Exam. Any Time." - [www.actualtests.com](http://www.actualtests.com) 48

Which type of UPS (Uninterruptible Power Supply) system allows for correction of brownout and surge conditions without depleting the batteries?

- A. line interactive UPS (Uninterruptible Power Supply)
- B. offline UPS (Uninterruptible Power Supply)
- C. parallel online UPS (Uninterruptible Power Supply)
- D. online UPS (Uninterruptible Power Supply)

**Correct Answer: A**

**Section: (none)**

**Explanation**

**Explanation/Reference:**

**QUESTION 147**

A client asks a server technician to install a new Ultra3 dual port SCSI controller to an existing server. The new controller will replace an Ultra2 SCSI controller that is in the server. The only device that will be connected is an Ultra2 SCSI external tape drive. The customer wants to add new SCSI hard drives in the future. Which statement is true?

- A. The new configuration will work and Ultra3 devices will operate at Ultra3 speeds.
- B. The new configuration will work and all devices will operate at Ultra3 speeds.
- C. The new configuration will not work.
- D. The new configuration will work, however Ultra3 devices will operate at Ultra2 speeds.

**Correct Answer: A**

**Section: (none)**

**Explanation**

**Explanation/Reference:**

**QUESTION 148**

A new server is being installed on a subnet. Two network cards have been installed in the server. Clients on the Windows network will have access to a mainframe computer through this server. Which type of server is being installed?

- A. proxy
- B. RAS (Remote Access Server)
- C. gateway
- D. DNS

**Correct Answer: C**

**Section: (none)**

**Explanation**

**Explanation/Reference:**



**QUESTION 149**

An engineer installs an SMP (Symmetrical Multi-Processing)-compliant network operating system on a dual-processor server. The BIOS detects two processors, but only one processor is recognized by the network operating system. Which action should the engineer take to enable the

"Pass Any Exam. Any Time." - [www.actualtests.com](http://www.actualtests.com) 49  
SECOND processor?

- A. configure the network operating system kernel for SMP (Symmetrical Multi-Processing) support
- B. update the stepping level on the second processor
- C. apply the latest network operating system patches
- D. update the BIOS to the current version

**Correct Answer:** A

**Section:** (none)

**Explanation**

**Explanation/Reference:**

**QUESTION 150**

Which two can be used to connect Fibre Channel devices? (Select TWO)

- A. loop switch
- B. GBIC (GigaBit Interface Converter) module
- C. fibre hub
- D. Layer 3 switch

**Correct Answer:** AC

**Section:** (none)

**Explanation**

**Explanation/Reference:**

**QUESTION 151**

A new server is being installed. It needs the MOST redundancy possible in the way that it connects to the network. The server is running TCP/IP protocol only. The customer has two 24- port switches connected together. Which two actions accomplish this? (Select TWO)

- A. installing two Fibre Channel cards in the server and configuring the cards for fibre failover
- B. connecting both cards to one of the switches
- C. installing two network cards in the server and configuring the cards for adapter fault tolerance
- D. connecting one card to each switch

**Correct Answer:** CD

**Section:** (none)

**Explanation**

**Explanation/Reference:**

**QUESTION 152**

Which of the following might indicate that a server needs more memory?

- A. excessive seek time
  - B. numerous hard page faults
  - C. numerous processor interrupts
  - D. slow network performance
- "Pass Any Exam. Any Time." - [www.actualtests.com](http://www.actualtests.com) 50

**Correct Answer:** B

**Section:** (none)

**Explanation**

**Explanation/Reference:**

#### **QUESTION 153**

A company server requires a seven-day backup schedule. Which backup schedule takes the LEAST time to restore in the event of a failure and ensures data integrity?

- A. one full, six incremental
- B. two full, five incremental
- C. one full, six differential
- D. seven full

**Correct Answer:** D

**Section:** (none)

**Explanation**

**Explanation/Reference:**

#### **QUESTION 154**

Which three statements are true about PCI-X specification? (Select THREE)

- A. It is more fault tolerant than PCI.
- B. It provides for PCI 2.2 speeds in a PCI 1.0 slot.
- C. It attains its highest speed only if there is one PCI-X slot on the PCI bus.
- D. It defines a 64-bit PCI bus that operates at 133 MHz.
- E. It is incompatible with the previous generations of PCI.

**Correct Answer:** ACD

**Section:** (none)

**Explanation**

**Explanation/Reference:**

#### **QUESTION 155**

Which of the following configurations provides the maximum data throughput to each device?

- A. HVD (High Voltage Differential) and SE (Single Ended) devices on the same bus
- B. LVD (Low Voltage Differential) and SE (Single Ended) devices on the same bus
- C. LVD (Low Voltage Differential) and SE (Single Ended) devices on a separate bus
- D. HVD (High Voltage Differential) and SE (Single Ended) devices on a separate bus

**Correct Answer:** C

**Section: (none)**

**Explanation**

**Explanation/Reference:**

**QUESTION 156**

PCI bus mastering is a:

"Pass Any Exam. Any Time." - [www.actualtests.com](http://www.actualtests.com) 51

- A. CPU that controls the bus to transfer data.
- B. non-CPU device that controls the bus to transfer data directly.
- C. non-CPU device that matches CPU speed to transfer data.
- D. CPU that communicates with other non-CPU devices directly.

**Correct Answer: B**

**Section: (none)**

**Explanation**

**Explanation/Reference:**

**QUESTION 157**

After upgrading the SNMP (Simple Network Management Protocol) protocol, the \_\_\_\_\_ can be looked up. It is a sequence of integers that uniquely identifies a path to a managed object.

- A. register
- B. MIB (Management Information Base)
- C. OID (ObjectIdentifier)
- D. community name

**Correct Answer: C**

**Section: (none)**

**Explanation**

**Explanation/Reference:**

**QUESTION 158**

A company purchases a new file server rated at 3U. The new server needs to be installed in the server rack, where other file servers are installed. Rack space is limited and it must be determined whether or not the rack will accommodate the new server. How much vertical space does the new server need?

- A. 4.25 in (10.8 cm)
- B. 5.25 in (13.3 cm)
- C. 3.25 in (8.3 cm)
- D. 2.25 in (5.7 cm)

**Correct Answer: B**

**Section: (none)**

**Explanation**

**Explanation/Reference:**

**QUESTION 159**

A customer needs a database server assembled. The customer's major requirement is having a SCSI disk subsystem that supports the fastest data transfer rates available. Which of the following meets the customer's requirement?

- A. Ultra 160 SCSI
  - B. SCSI-2
  - C. SCSI-3
  - D. Ultra 320 SCSI
- "Pass Any Exam. Any Time." - www.actualtests.com 52

**Correct Answer: D**

**Section: (none)**

**Explanation**

**Explanation/Reference:**

**QUESTION 160**

File sharing between two or more hosts with no central point of administration is an example of which server application model?

- A. peer-to-peer application
- B. dedicated application
- C. distributed application
- D. client server application
- E. SMB (Server Message Block) share application

**Correct Answer: A**

**Section: (none)**

**Explanation**

**Explanation/Reference:**

**QUESTION 161**

During a test of the disaster recovery plan, it is discovered that some servers were restored with other servers' data. Which action is MOST likely to improve disaster recovery in the future?

- A. implement a media rotation scheme for offsite tapes
- B. create a database that contains the backup logs stored on an incremental server
- C. implement a differential backup strategy
- D. maintain a printed tape backup report

**Correct Answer: D**

**Section: (none)**

**Explanation**

**Explanation/Reference:**

**QUESTION 162**

Additional drives are being added to an existing low cost server. The system administrator is considering using Serial ATA drives rather than SCSI. Which four statements are reasons to use Serial ATA drives? (Select FOUR)

- A. Serial ATA drives have a lower RPM rating than SCSI drives, but a better I/O value.
- B. Serial ATA drives are priced as a replacement of Parallel ATA hence greater storage at lower prices can be achieved.
- C. Serial ATA performs at 260 MB/sec within a disk drive array.
- D. Thin point-to-point cabling prevents termination and airflow issues.  
"Pass Any Exam. Any Time." - www.actualtests.com 53
- E. Point-to-point cables consist of quad braided Kevlar connectors to reduce electrical interference.
- F. Serial ATA performs at 150 MB/sec within a disk drive array.
- G. Multiple point-to-point connections can be aggregated onto a single controller through the use of backplanes and external enclosures.

**Correct Answer:** BDFG

**Section:** (none)

**Explanation**

**Explanation/Reference:**

### QUESTION 163

A consulting firm is hired by a company in an earthquake-prone area to review their disaster plan. Review of the disaster recovery plan reveals the following:

1. Offsite backup storage is in a locked fireproof safe, with restricted key access. All tape backups are stored in this safe.
2. There is a reciprocal agreement with a sister company located two blocks from the company's location to store each other's backup safes. Plans are in place to allow 24-hour access to backups.
3. The selected hot site is 100 miles from the normal business site.
4. A GFS (Grandfather-Father-Son) tape rotation plan is in use.

Which changes should be made to the plan?

- A. change tape rotation systems
- B. move the hot site closer to the normal business site
- C. send tape backups to a more remote facility
- D. make no changes

**Correct Answer:** C

**Section:** (none)

**Explanation**

**Explanation/Reference:**

### QUESTION 164

A small server is operating with a single ATA 66 drive on the primary IDE interface. An additional ATA 100 drive is added to the primary IDE interface. How will the drives MOST likely perform?

- A. Each drive will operate at approximately half its optimum performance rate.
- B. Each drive will operate at its optimum performance rate.
- C. Both drives will operate at the ATA 66 performance rate.
- D. Both drives will operate at the ATA 100 performance rate.

**Correct Answer:** C

**Section:** (none)

**Explanation**

**Explanation/Reference:**

"Pass Any Exam. Any Time." - www.actualtests.com 54

**QUESTION 165**

How much space does a 4U server require in a standard equipment rack?

- A. 8 inches / 20.3 cm
- B. 7 inches / 17.8 cm
- C. 4 inches / 10.2 cm
- D. 5 inches / 12.7 cm

**Correct Answer: B**

**Section: (none)**

**Explanation**

**Explanation/Reference:**

**QUESTION 166**

While a server remains powered on, PCI hot plug technology is utilized for which two purposes? (Select TWO)

- A. to maintain server uptime during hardware failures
- B. to replace failed or aging adapters/controllers with new adapters/controllers
- C. to upgrade older generation controllers with state of the art controllers
- D. to improve the connectivity of PCI hardware within a server environment

**Correct Answer: BC**

**Section: (none)**

**Explanation**

**Explanation/Reference:**



<http://www.gratisexam.com/>

**QUESTION 167**

A UPS (Uninterruptible Power Supply) is being selected for a remote office. The correct size UPS (Uninterruptible Power Supply) needs to be determined. Which formula should be used to determine the load requirements?

- A.  $VA = kW \times 1000 \times \text{Amperes}$
- B.  $VA = \text{Volts} \times \text{Amperes}$
- C.  $kVA = \text{Volts} \times \text{Amperes}$
- D.  $\text{Watts} = \text{Current} \times \text{Voltage}$

**Correct Answer: B**

**Section: (none)**

**Explanation**

**Explanation/Reference:**

**QUESTION 168**

Which method of mass storage automatically puts often used data onto an online source, while storing less used data on a near-line source such as a tape system?

"Pass Any Exam. Any Time." - [www.actualtests.com](http://www.actualtests.com) 55

- A. SAN (Storage Area Network)
- B. HSM (Hierarchical Storage Management)
- C. RAID (Redundant Array of Independent Disks)
- D. NAS (Network Attached Storage)

**Correct Answer: B**

**Section: (none)**

**Explanation**

**Explanation/Reference:**

**QUESTION 169**

A technician purchases a new 120 GB IDE hard disk to use in an old server as a swap drive. After adding the drive to the server, the technician discovers that the operating system does not detect the drive.

After rebooting the server, the technician notices the drive is missing from POST and comes to the conclusion that the BIOS needs to be updated. The technician downloads the latest version of the BIOS update from the manufacturer website.

Which action should the technician take next?

- A. backup the BIOS configuration to use later
- B. read the manufacturer's guidelines and recommendations on installing the update
- C. create a bootable floppy and copy the BIOS update tools to the floppy
- D. install the BIOS update from a command prompt

**Correct Answer: B**

**Section: (none)**

**Explanation**

**Explanation/Reference:**

**QUESTION 170**

A Novell NetWare 6 server is used for file storage. Which command runs a shutdown without a prompt?

- A. RESTART SERVER -f
- B. RESTART SERVER -nt
- C. RESET SERVER -ns
- D. DOWN -f
- E. DOWN -ns

**Correct Answer: D**

**Section: (none)**

**Explanation**

**Explanation/Reference:**

**QUESTION 171**

"Pass Any Exam. Any Time." - www.actualtests.com 56

Which two types of servers are capable of caching the results of requests made on behalf of network clients?  
(Select TWO)

- A. SNA (System Network Architecture) server
- B. DHCP (Dynamic Host Configuration Protocol) server
- C. DNS (Domain Name System) server
- D. RAS (Remote Access Server) server
- E. Proxy server

**Correct Answer:** CE

**Section:** (none)

**Explanation**

**Explanation/Reference:**

**QUESTION 172**

In the CLI (Command Line Interface) of a Novell NetWare server, which command is used to perform a shutdown ensuring the data integrity of the server?

- A. SHUTDOWN /SECURE
- B. RESET SERVER
- C. RESTART SERVER
- D. DOWN
- E. SHUTDOWN
- F. KILL SERVER

**Correct Answer:** D

**Section:** (none)

**Explanation**

**Explanation/Reference:**

**QUESTION 173**

When installing a new server, when would the FIRST performance baseline be created?

- A. after installing the operating system and all user applications
- B. before users arrive for work and access the system
- C. during peak usage times
- D. after installing the operating system

**Correct Answer:** A

**Section:** (none)

**Explanation**

**Explanation/Reference:**

**QUESTION 174**



Which three fire suppression agent types cause the LEAST damage to equipment in a server room? (Select THREE)

"Pass Any Exam. Any Time." - [www.actualtests.com](http://www.actualtests.com) 57

- A. HALON
- B. carbon dioxide (CO2)
- C. FM200
- D. AFFF
- E. PKP
- F. water (H2O)

**Correct Answer:** ABC

**Section:** (none)

**Explanation**

**Explanation/Reference:**

#### **QUESTION 175**

The original batteries of a UPS (Uninterruptible Power Supply) are replaced without incident. Which two are proper ways to dispose of the old batteries? (Select TWO)

- A. take the batteries to any recycling center
- B. take the batteries to any local battery disposal location listed in the phonebook or online
- C. call the UPS (Uninterruptible Power Supply) manufacturer to determine a local disposal facility or ship the batteries to a remote disposal facility
- D. dispose of the batteries in a clearly marked container

**Correct Answer:** BC

**Section:** (none)

**Explanation**

**Explanation/Reference:**

#### **QUESTION 176**

When installing a new server, when would the FIRST performance baseline be created?

- A. after installing the operating system
- B. during peak usage times
- C. before users arrive for work and access the system
- D. after installing the operating system and all user applications

**Correct Answer:** D

**Section:** (none)

**Explanation**

**Explanation/Reference:**

#### **QUESTION 177**

While a server remains powered on, PCI hot plug technology is utilized for which two purposes? (Select TWO)

- A. to improve the connectivity of PCI hardware within a server environment

- B. to upgrade older generation controllers with state of the art controllers
- C. to maintain server uptime during hardware failures  
"Pass Any Exam. Any Time." - [www.actualtests.com](http://www.actualtests.com) 58
- D. to replace failed or aging adapters/controllers with new adapters/controllers

**Correct Answer:** BD

**Section:** (none)

**Explanation**

**Explanation/Reference:**

#### **QUESTION 178**

The current data center has run out of space. A room that is located next to the existing data center is then used to house two racks containing six servers. Six months later, physical housekeeping is performed as part of a mid-year maintenance plan.

Which environmental condition discovered in the room is LEAST critical?

- A. Large amounts of dust have accumulated in the corners of the room.
- B. There are discolored ceiling tiles near the middle of the room.
- C. A wet pipe water-based sprinkler system has been installed above the racks.
- D. The anti-static carpet has been removed resulting in a bare painted concrete floor.

**Correct Answer:** D

**Section:** (none)

**Explanation**

**Explanation/Reference:**

#### **QUESTION 179**

In the event of a single-drive failure of an array, which of the following is the FIRST step to recovery?

- A. determine RAID type and level
- B. break the mirror
- C. restore from backup
- D. replace the failed drive

**Correct Answer:** A

**Section:** (none)

**Explanation**

**Explanation/Reference:**

#### **QUESTION 180**

After upgrading a server motherboard to the latest firmware revision, configuring LAN access in the SSU (System Setup Utility) fails. Which action should be taken FIRST to correct this problem?

- A. install the latest SSU (System Setup Utility) version
- B. replace the NIC
- C. upgrade the firmware on the NIC
- D. assign the NIC a static IRQ in the SSU (System Setup Utility) "Pass Any Exam. Any Time." - [www.actualtests.com](http://www.actualtests.com) 59

**Correct Answer:** C

**Section:** (none)

**Explanation**

**Explanation/Reference:**

#### **QUESTION 181**

Various performance counters are checked to determine the cause of a redeployed Web server bottleneck. It is determined that the aged SCSI hardware needs to be replaced with an upgrade, rather than upgrading the RAM. Which three readings indicate this is the appropriate course of action? (Select THREE)

- A. Current Disk Queue Length
- B. Average Disk Transfer/sec
- C. SCSI Class
- D. Disk Access Time

**Correct Answer:** ABD

**Section:** (none)

**Explanation**

**Explanation/Reference:**

#### **QUESTION 182**

An existing server contains a single RAID 5 array with six drives, all 9 GB in size. One drive fails. It is not possible to obtain a 9 GB drive to replace it. The manufacturer supplies an 18 GB drive, claiming it is compatible with this server. What is the usable size of the array after installing the 18 GB drive?

- A. 36 GB
- B. 45 GB
- C. 54 GB
- D. 27 GB
- E. 63 GB

**Correct Answer:** B

**Section:** (none)

**Explanation**

**Explanation/Reference:**

#### **QUESTION 183**

A server is being backed up using a seven-day incremental GFS (Grandfather-Father-Son) tape rotation. The rotation starts on Mondays with backups starting at midnight. The grandfather tapes are sent to an offsite storage facility. All other tapes are stored onsite in a fireproof cabinet. A hard drive failure on Saturday afternoon requires data to be restored from tape.

How many tape sets are needed from the offsite facility?

- A. none
  - B. one tape sets
  - C. six tapes sets
  - D. two tapes sets
- "Pass Any Exam. Any Time." - [www.actualtests.com](http://www.actualtests.com) 60

**Correct Answer:** A

**Section:** (none)

**Explanation**

**Explanation/Reference:**

**QUESTION 184**

Many users within a company are complaining that the file server for the HR department is responding very slowly. Server information indicates that the network operating system is NetWare. Which tool should be used to diagnose the server latency?

- A. SYSLOG
- B. MONITOR
- C. ARP -E
- D. NWADMN32

**Correct Answer:** B

**Section:** (none)

**Explanation**

**Explanation/Reference:**

**QUESTION 185**

A mission-critical server crashed on Tuesday morning at 9:24 a.m. and needs to be fully restored from tape that same day. A tape rotation scheme was implemented a month ago. Full backups are taken on Sunday at 1:00 a.m. and differentials for the remaining days of the week are at the same time.

How many tape sets are needed to restore the server?

- A. one tape set
- B. two tape sets
- C. four tape sets
- D. three tape sets

**Correct Answer:** B

**Section:** (none)

**Explanation**

**Explanation/Reference:**

**QUESTION 186**

After an extended power outage, one server has an unplanned shutdown. Which of the following should be checked FIRST?

- A. the batteries in the UPS (Uninterruptible Power Supply) "Pass Any Exam. Any Time." - [www.actualtests.com](http://www.actualtests.com)  
61
- B. the application logs
- C. the maintenance log for the UPS (Uninterruptible Power Supply)
- D. the serial cable between the server and the UPS (Uninterruptible Power Supply)

**Correct Answer:** D

**Section:** (none)

## **Explanation**

### **Explanation/Reference:**

#### **QUESTION 187**

To provide fault tolerance for a database server, a software RAID 1 is created. A few months later, one of the RAID 1 hard disks fails. How should the RAID 1 set be repaired?

- A. remove/break the mirror set, replace the failed disk, and recreate the mirror
- B. add another disk to the mirror set, convert the mirror set to RAID 5, recreate the information from parity, and convert it back to RAID 1
- C. add another disk to the mirror set, synchronize it with the healthy disk, and remove the failed disk from the mirror set
- D. replace the failed disk, remove/break the mirror, and let the mirror regenerate automatically

**Correct Answer:** A

**Section:** (none)

## **Explanation**

### **Explanation/Reference:**

#### **QUESTION 188**

When configuring hard drives in an external SAN (Storage Area Network) attached storage array, from where should the new drive array be created?

- A. every server in the SAN (Storage Area Network) that will use this particular array
- B. one server in the SAN (Storage Area Network)
- C. Drive array information comes preconfigured on the drives.
- D. every server in the SAN (Storage Area Network), whether they will use this array or not

**Correct Answer:** B

**Section:** (none)

## **Explanation**

### **Explanation/Reference:**

#### **QUESTION 189**

From a local machine, connectivity with a server named server1.comptia.org is tested. It cannot be reached, but it can be accessed via the IP address. The DNS server is checked and everything seems to be functioning correctly. Which of the following is the MOST effective command to use to resolve the problem?

- A. ipconfig /registerdns
- B. nslookup server1.comptia.org  
"Pass Any Exam. Any Time." - www.actualtests.com 62
- C. ipconfig /renew
- D. ifconfig /flushdns
- E. ipconfig /flushdns

**Correct Answer:** E

**Section:** (none)

## **Explanation**

### **Explanation/Reference:**

**QUESTION 190**

Which of the following is the primary advantage to memory interleaving?

- A. dramatically lower BER (Bit Error Rate)
- B. effective multiplication of memory reads/writes
- C. increased redundancy across multiple banks
- D. decreased page file size requirements

**Correct Answer:** B

**Section:** (none)

**Explanation**

**Explanation/Reference:**

**QUESTION 191**

The performance of a RAID 5 dual processor database server is degrading over time. Symptoms include excessive disk access, high memory utilization, and slow responses to database searches. Which action should be taken to reduce the server's bottleneck?

- A. add more RAM
- B. increase the swap file size
- C. upgrade the CPUs
- D. add additional CPUs
- E. implement RAID 1

**Correct Answer:** A

**Section:** (none)

**Explanation**

**Explanation/Reference:**

**QUESTION 192**

A network operating system is being installed on a company server. After the installation, the desktop configuration runs 640 x 480 and 16 colors. The company requires at least high color depth. Which action should be taken to address this problem?

- A. install "Standard VGA Adapter" from the network operating system hardware list
- B. replace the VGA adapter with one reflected in the NOS HCL (Hardware Compatibility List)
- C. check the VGA manufacturer website for latest device drivers
- D. install the latest update from the network operating system manufacturer "Pass Any Exam. Any Time." - [www.actualtests.com](http://www.actualtests.com) 63

**Correct Answer:** C

**Section:** (none)

**Explanation**

**Explanation/Reference:**

**QUESTION 193**

On which three occasions, should the baseline be updated? (Select THREE)

- A. when network performance has degraded due to a hardware failure
- B. when a new client/server application is installed on the server
- C. when server memory is upgraded
- D. when a company hires 50 new employees

**Correct Answer:** BCD

**Section:** (none)

**Explanation**

**Explanation/Reference:**

#### **QUESTION 194**

A Novell NetWare 6 server is used for file storage. Which command runs a shutdown without a prompt?

- A. RESET SERVER -ns
- B. RESTART SERVER -f
- C. DOWN -ns
- D. DOWN -f
- E. RESTART SERVER -nt

**Correct Answer:** D

**Section:** (none)

**Explanation**

**Explanation/Reference:**

#### **QUESTION 195**

Additional memory is being added on a server. Which two precautions should be taken to ensure the memory is NOT damaged by ESD (electrostatic discharge) during the installation process? (Select TWO)

- A. ensure the server is connected to a surge protector
- B. wear an antistatic wrist strap
- C. wear shoes with rubber soles
- D. ensure the server is connected to a UPS (Uninterruptible Power Supply)
- E. ensure the server is grounded before commencing

**Correct Answer:** BE

**Section:** (none)

**Explanation**

**Explanation/Reference:**

"Pass Any Exam. Any Time." - [www.actualtests.com](http://www.actualtests.com) 64

#### **QUESTION 196**

In a small file server, with four ATA 133 drives, which of the following is the maximum recommended length of I/O cable from any pair of drives to the IDE channel?

- A. 12 inches (304.8 mm)
- B. 10 inches (254 mm)
- C. 18 inches (457.2 mm)
- D. 22 inches (588.8 mm)

**Correct Answer:** C

**Section:** (none)

**Explanation**

**Explanation/Reference:**

**QUESTION 197**

Which type of UPS (Uninterruptible Power Supply) can undergo maintenance while remaining online?

- A. hot-swap battery enabled UPS (Uninterruptible Power Supply)
- B. smart slot enabled UPS (Uninterruptible Power Supply)
- C. hot-spare battery enabled UPS (Uninterruptible Power Supply)
- D. extended runtime enabled UPS (Uninterruptible Power Supply)
- E. smart cable enabled UPS (Uninterruptible Power Supply)

**Correct Answer:** A

**Section:** (none)

**Explanation**

**Explanation/Reference:**

**QUESTION 198**

Which of the following is the maximum cable length for Ultra 160?

- A. 12 meters
- B. 3 meters
- C. 25 meters
- D. 6 meters
- E. 1.5 meters

**Correct Answer:** A

**Section:** (none)

**Explanation**

**Explanation/Reference:**

**QUESTION 199**

A server technician installs a new external Ultra 320 hard drive. When testing the drive by saving files to it, the technician finds the drive throughput to be less than expected. Which of the following is the MOST likely cause of this problem?

"Pass Any Exam. Any Time." - [www.actualtests.com](http://www.actualtests.com) 65

- A. mismatched SCSI-2 firmware
- B. improper ID setting
- C. mismatched server BIOS version
- D. improper controller BIOS settings
- E. improper bus termination

**Correct Answer:** D

**Section:** (none)

**Explanation**



**Explanation/Reference:**

**QUESTION 200**

A database server is being set up that is using an external rack mounted SCSI drive enclosure. The SCSI cables are connected to the server, but the server still does not recognize the drive enclosure. Which two actions should be taken to troubleshoot this problem? (Select TWO)

- A. ensure the SCSI enclosure is powered on first, and after the disks initialize, power on the server
- B. ensure there is proper termination for the SCSI chain prior to starting up
- C. ensure the server is powered on first, and after log in power on the SCSI enclosure
- D. ensure that each drive has the proper SCSI ID setting

**Correct Answer:** AB

**Section:** (none)

**Explanation**

**Explanation/Reference:**

**QUESTION 201**

A server is repeatedly rebooting. The problem coincides with peak user loads. Once the user load reaches a certain level, the server reboots. Previously, this server handled these user loads without any problems. Which three are the BEST ways to resolve this problem? (Select THREE)

- A. add additional memory
- B. check server logs
- C. run hardware diagnostics
- D. reinstall the operating system
- E. add additional network cards
- F. check for cooling problems

**Correct Answer:** BCF

**Section:** (none)

**Explanation**

**Explanation/Reference:**

**QUESTION 202**

A performance test is run on a server and the following results are obtained::

Pages / s:1502

% Disk Utilization:40%

"Pass Any Exam. Any Time." - [www.actualtests.com](http://www.actualtests.com) 66

% Network Utilization: 15%

% Processor Utilization: 85%

Based on these results, which two actions would improve server performance? (Select TWO)

- A. install a faster CPU
- B. add another processor
- C. install faster processor memory
- D. add more hard disks

**Correct Answer:** AB

**Section:** (none)

**Explanation**

**Explanation/Reference:**

**QUESTION 203**

A server currently uses an Ultra2 8-bit SCSI controller. An Ultra 320 drive is being installed. Which two actions must be taken to connect the Ultra 320 drive to the server? (Select TWO)

- A. replace the 68-pin cable with a 50-pin cable
- B. replace the Ultra2 controller with an Ultra 320 controller
- C. replace the 50-pin cable with a 68-pin cable
- D. install an Ultra2 to Ultra 320 converter

**Correct Answer:** BC

**Section:** (none)

**Explanation**

**Explanation/Reference:**

**QUESTION 204**

A database server has an external SDLT (Super DLT) backup drive connected to it. Both the backup drive and a hard drive are connected to the SCSI card in the server. When the server is started, the tape drive is not available, but the hard disk works properly. Which of the following is the MOST likely cause of the problem?

- A. The SCSI card drivers are not installed properly.
- B. The tape drive is not receiving power.
- C. The SCSI card is defective.
- D. The tape's drivers are not installed properly.

**Correct Answer:** B

**Section:** (none)

**Explanation**

**Explanation/Reference:**

**QUESTION 205**

In which system can a component be physically replaced without shutting down the server power, but I/O processing is discontinued?

"Pass Any Exam. Any Time." - [www.actualtests.com](http://www.actualtests.com) 67

- A. cold swap
- B. hot swap
- C. warm swap
- D. hot spare

**Correct Answer:** C

**Section:** (none)

**Explanation**

**Explanation/Reference:**

**QUESTION 206**

A server recently had a RAID controller replaced under warranty by the manufacturer. Since the repair, the system seems to be generating several write errors, and sometimes does not boot into the operating system. Which of the following is the MOST effective solution to apply FIRST?

- A. replace the device drivers, as they are incorrect
- B. replace the system board, as it is damaged
- C. replace the RAID controller, as it is damaged
- D. replace the RAID configuration, as it is incorrect

**Correct Answer:** A

**Section:** (none)

**Explanation**

**Explanation/Reference:**

**QUESTION 207**

A Web hosting facility has five new clients. Clients often visit the server room to oversee server operations. Which of the following is the MOST cost-effective, yet physically secure arrangement for this situation?

- A. Clients should be given keys to the server room and asked to sign in.
- B. Servers should be installed in separate locked server rooms.
- C. The server room should be video monitored for security purposes.
- D. Servers should be installed in separate locked server racks within one server room.

**Correct Answer:** D

**Section:** (none)

**Explanation**

**Explanation/Reference:**

**QUESTION 208**

Which type of server should be installed to provide Windows clients access to an AS400 mainframe?

- A. proxy
  - B. gateway
  - C. router
  - D. bridge
- "Pass Any Exam. Any Time." - [www.actualtests.com](http://www.actualtests.com) 68

**Correct Answer:** B

**Section:** (none)

**Explanation**

**Explanation/Reference:**

**QUESTION 209**

A Novell NetWare 6 server is used for file storage. Which command runs a shutdown without a prompt?

- A. DOWN -ns
- B. RESET SERVER -ns

- C. RESTART SERVER -f
- D. RESTART SERVER -nt
- E. DOWN -f

**Correct Answer:** E

**Section:** (none)

**Explanation**

**Explanation/Reference:**

#### **QUESTION 210**

A server recently had a RAID controller replaced under warranty by the manufacturer. Since the repair, the system seems to be generating several write errors, and sometimes does not boot into the operating system. Which of the following is the MOST effective solution to apply FIRST?

- A. replace the system board, as it is damaged
- B. replace the RAID configuration, as it is incorrect
- C. replace the device drivers, as they are incorrect
- D. replace the RAID controller, as it is damaged

**Correct Answer:** C

**Section:** (none)

**Explanation**

**Explanation/Reference:**

#### **QUESTION 211**

A server has three SCSI drives that need to be upgraded. The drives have a single connector interface with no 4-pin DC power connector. They also have hot-swap capability. Which type of connector interface do the drives have?

- A. 50-pin mini DB
- B. 68-pin DB
- C. 80-pin SCA
- D. 50-pin standard

"Pass Any Exam. Any Time." - [www.actualtests.com](http://www.actualtests.com) 69

**Correct Answer:** C

**Section:** (none)

**Explanation**

**Explanation/Reference:**

#### **QUESTION 212**

Which type of RAID supports hot swapping?

- A. hardware-based RAID 0
- B. hardware-based RAID 5
- C. software-based RAID 5
- D. software-based RAID 0+1

**Correct Answer:** B

**Section: (none)**

**Explanation**

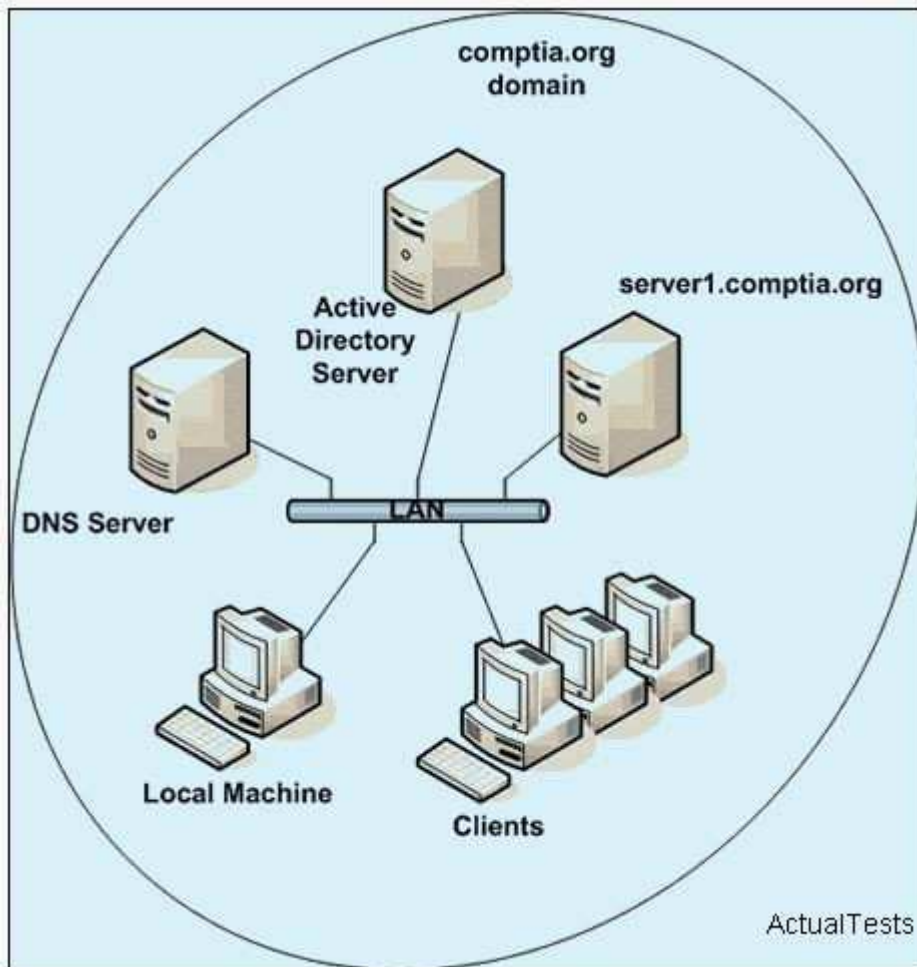
**Explanation/Reference:**

**QUESTION 213**

Click the Exhibit button.

From a local machine, connectivity with a server named server1.comptia.org is checked. It cannot be reached, but it can be accessed via the IP address.

Which of the following is the MOST common cause of this error? "Pass Any Exam. Any Time." - [www.actualtests.com](http://www.actualtests.com) 70



- A. The local DNS cache is full.
- B. The server is down.
- C. The local DNS client is stopped.
- D. The DNS server is down.
- E. The local DNS cache is corrupted.

**Correct Answer: D**

**Section: (none)**

**Explanation**

**Explanation/Reference:**

**QUESTION 214**

Which three are peer-to-peer network schemas? (Select THREE)

- A. Gnutella
- B. Fast Track
- C. ShareStar
- D. servlet
- E. EDonkey

"Pass Any Exam. Any Time." - [www.actualtests.com](http://www.actualtests.com) 71

**Correct Answer:** ABE

**Section:** (none)

**Explanation**

**Explanation/Reference:**

**QUESTION 215**

A new SAN (Storage Area Network) that uses Fibre Channel technology is being implemented. Users utilize the IP network to connect to servers.

The servers must use the \_\_\_\_\_ to connect to the SAN (Storage Area Network).

- A. Fibre Channel Fabric
- B. Fibre Channel Bus
- C. SCSI BUS
- D. Ethernet

**Correct Answer:** A

**Section:** (none)

**Explanation**

**Explanation/Reference:**

**QUESTION 216**

Which three are characteristics of SMP (Symmetrical Multi-Processing)? (Select THREE)

- A. ASMP is easier to implement than SMP (Symmetrical Multi-Processing).
- B. Each processor shares the same memory.
- C. Each processor is defined to specific tasks.
- D. Each processor runs all tasks in parallel.
- E. SMP (Symmetrical Multi-Processing) is easier to implement than ASMP (Asymmetrical Multi- Processing).
- F. Each processor maintains individual memory.

**Correct Answer:** BDE

**Section:** (none)

**Explanation**

**Explanation/Reference:**

**QUESTION 217**

A SCSI adapter with six non-hotplug HDDs is being installed in a new server. Which two should be checked before closing the cover of the server and starting it? (Select TWO)

- A. the SCSI IDs
- B. the network operating system for HDD recognition
- C. the SCSI adapter termination
- D. the SCSI chain termination

**Correct Answer:** AD

**Section:** (none)

**Explanation**

**Explanation/Reference:**

"Pass Any Exam. Any Time." - [www.actualtests.com](http://www.actualtests.com) 72

**QUESTION 218**

Which two PCI devices can achieve a maximum transfer rate of 267 Mbps? (Select TWO)

- A. PCI 32-bit card at 66 MHz
- B. PCI 64-bit card at 33 MHz
- C. PCI 32-bit card at 33 MHz
- D. PCI 64-bit card at 66 MHz

**Correct Answer:** AB

**Section:** (none)

**Explanation**

**Explanation/Reference:**

**QUESTION 219**

A server room contains eleven servers, two UPSs (Uninterruptible Power Supply), one catalyst switch, a patch panel, and a router. All of the equipment is located on three work stations. Each server has its own monitor, keyboard, and mouse. All cables are routed behind the tables and around the perimeter of the room.

Which two should be installed to greatly improve the environment of the server room? (Select TWO)

- A. a new switch to share load
- B. a KVM (keyboard/video/mouse) switch
- C. a cable management system
- D. a set of server racks

**Correct Answer:** BD

**Section:** (none)

**Explanation**

**Explanation/Reference:**

**QUESTION 220**

Which two should be included in server baseline documentation? (Select TWO)

- A. server response time study
- B. warranty status of the server

- C. disaster recovery plans
- D. disk performance statistics
- E. emergency technical support numbers

**Correct Answer:** AD

**Section:** (none)

**Explanation**

**Explanation/Reference:**

"Pass Any Exam. Any Time." - [www.actualtests.com](http://www.actualtests.com) 73

#### **QUESTION 221**

A customer needs to minimize the amount of time required for each weekday backup. Which daily backup is BEST for this customer?

- A. GFS (Grandfather-Father-Son)
- B. daily incremental and weekly full
- C. daily differential and weekly full
- D. daily full

**Correct Answer:** B

**Section:** (none)

**Explanation**

**Explanation/Reference:**

#### **QUESTION 222**

Users are complaining that response times for an application are unacceptable during their busiest time. The baselines for this server indicate that the number of page faults have increased to unacceptable levels. Which action would resolve the bottleneck?

- A. install more memory
- B. replace the 100 MB NIC with a 1 GB NIC
- C. install a RAID controller
- D. install faster CPUs

**Correct Answer:** A

**Section:** (none)

**Explanation**

**Explanation/Reference:**

#### **QUESTION 223**

A performance test is run on a server and the following results are obtained:

Pages / s:15020

% Disk Utilization:87%

% Network Utilization: 15%

% Processor Utilization: 25%

Based on these results, which of the following is the server's bottleneck?

- A. processor
- B. disk subsystem
- C. network subsystem



D. memory

**Correct Answer:** D

**Section:** (none)

**Explanation**

**Explanation/Reference:**

"Pass Any Exam. Any Time." - www.actualtests.com 74

#### **QUESTION 224**

Which action increases server availability?

- A. installing a dual-port network card that can handle the future growth and setting one NIC to 10 Mbps and one NIC to 100 Mbps
- B. replacing the existing 100 Mbps NIC with a gigabit Ethernet NIC
- C. configuring a second network card with a different IP address
- D. using adapter teaming and configuring the second network card with the same IP address as the first network card

**Correct Answer:** D

**Section:** (none)

**Explanation**

**Explanation/Reference:**

#### **QUESTION 225**

A new 4U server is being installed in an existing server rack. How much room (in inches) is required for this server?

- A. 7 inches (17.9 cm)
- B. 6 inches (15.3 cm)
- C. 4 inches (10.2 cm)
- D. 8 inches (20.4 cm)

**Correct Answer:** A

**Section:** (none)

**Explanation**

**Explanation/Reference:**

#### **QUESTION 226**

A single server in a four-server cluster fails. According to BEST practice, which action should be taken FIRST?

- A. unplug the network cable
- B. examine the cluster log files
- C. try pinging the failed server
- D. break and re-create a three-server cluster

**Correct Answer:** B

**Section:** (none)

**Explanation**

**Explanation/Reference:**

**QUESTION 227**

"Pass Any Exam. Any Time." - www.actualtests.com 75

When installing a new server, when would the FIRST performance baseline be created?

- A. after installing the operating system and all user applications
- B. before users arrive for work and access the system
- C. during peak usage times
- D. after installing the operating system

**Correct Answer:** A

**Section:** (none)

**Explanation**

**Explanation/Reference:**

**QUESTION 228**

A new server rack is being installed that includes three server UPS (Uninterruptible Power Supply) units. Where should the server UPS (Uninterruptible Power Supply) units be placed?

- A. one on top, one in the middle, and one on the bottom of the rack
- B. in the middle of the rack to reduce cable distance
- C. at the top of the rack because they produce the most heat
- D. at the bottom of the rack for stability

**Correct Answer:** D

**Section:** (none)

**Explanation**

**Explanation/Reference:**

**QUESTION 229**

Which of the following indicates to an SNMP (Simple Network Management Protocol) manager what default traps to look for?

- A. user configurations
- B. integrated into SNMP (Simple Network Management Protocol)
- C. MIB (Management Information Base) libraries
- D. driver files

**Correct Answer:** C

**Section:** (none)

**Explanation**

**Explanation/Reference:**

**QUESTION 230**

A company incorporates a terminal server for providing end-user office applications and an ASP providing an accounting package. Which two server models are currently being utilized? (Select TWO)

- A. distributed application
- B. peer-to-peer application

"Pass Any Exam. Any Time." - www.actualtests.com 76

- C. clustered application
- D. dedicated application

**Correct Answer:** AD

**Section:** (none)

**Explanation**

**Explanation/Reference:**

#### **QUESTION 231**

A server hardware technician installs an external DLT (Digital Linear Tape) drive. During the boot process, the device is not recognized by the SCSI controller. Which two steps should be taken to troubleshoot the problem? (Select TWO)

- A. make sure that the DLT (Digital Linear Tape) drive has power
- B. verify that the controller is recognized by the operating system
- C. verify that the device drivers have been loaded
- D. verify the cabling is connected securely and is the proper type

**Correct Answer:** AD

**Section:** (none)

**Explanation**

**Explanation/Reference:**

#### **QUESTION 232**

A server consistently reboots every day at the same time. Which environmental element is the MOST likely cause?

- A. electrical
- B. humidity
- C. ESD (Electrostatic Discharge)
- D. temperature

**Correct Answer:** A

**Section:** (none)

**Explanation**

**Explanation/Reference:**

#### **QUESTION 233**

Which of the following is the minimum number of hard drives needed to implement a RAID 0+1 in a file server?

- A. eight
- B. six
- C. four
- D. two

**Correct Answer:** C

**Section:** (none)

**Explanation**

**Explanation/Reference:**

"Pass Any Exam. Any Time." - www.actualtests.com 77

**QUESTION 234**

Which two statements are true about software-based RAID? (Select TWO)

- A. Hard disk make and model do not have to be the same when using software-based RAID.
- B. Hot-plug and hot-spare features are available with software-based RAID.
- C. Intervention is not required to recover fully from a drive failure.
- D. CPU load is increased when using software-based RAID.

**Correct Answer:** AD

**Section:** (none)

**Explanation**

**Explanation/Reference:**

**QUESTION 235**

Which two are key factors that make a SAN (Storage Area Network) different from a NAS (Network Attached Storage)? (Select TWO)

- A. A SAN (Storage Area Network) allows for loading of applications that run on the server.
- B. A SAN (Storage Area Network) has a simpler setup process, generally only requiring basic network setup and adding of users.
- C. A SAN (Storage Area Network) does not use a proprietary or a slimmed down version of an operating system.
- D. A SAN (Storage Area Network) is generally less expensive.

**Correct Answer:** AC

**Section:** (none)

**Explanation**

**Explanation/Reference:**

**QUESTION 236**

A server loses two disks on its data array running RAID 5. The company deploys a GFS (Grandfather-Father-Son) backup rotation using incremental backups during the week.

The company's disaster recovery plan stipulates that any data that cannot be recovered from local tape resources must be acquired from the offsite tape storage location.

The incremental backup was completed on Wednesday night, shortly before the server crashed. Backup media is still available locally.

Which of the following is the procedure that should be used to recover the data?

- A. The tapes should be recovered from the offsite facility using Friday's full backup and Wednesday's incremental backup.  
"Pass Any Exam. Any Time." - www.actualtests.com 78
- B. The tapes should be recovered from the offsite facility using Friday's full backup and Monday, Tuesday, and Wednesday's incremental backups.
- C. The tapes should be recovered from the onsite facility using tapes from Friday's full backup and Wednesday's incremental backup.
- D. The tapes should be recovered from the onsite facility using Friday's full backup and Monday, Tuesday, and

Wednesday's incremental backups.

**Correct Answer:** D

**Section:** (none)

**Explanation**

**Explanation/Reference:**

**QUESTION 237**

Which type of server is responsible for resolving NetBIOS names?

- A. DNS server
- B. mail server
- C. web server
- D. DHCP server
- E. WINS server

**Correct Answer:** E

**Section:** (none)

**Explanation**

**Explanation/Reference:**

**QUESTION 238**

There is a power outage at a company during the night, and the power is restored the next morning. Upon bootup, the server starts performing file system integrity checks. Which three are possible causes of this anomaly? (Select THREE)

- A. The UPS (Uninterruptible Power Supply) VA rating was too low for the server.
- B. There was a communication error between the UPS (Uninterruptible Power Supply) and the servers when they lost power.
- C. There was a battery fault with the UPS (Uninterruptible Power Supply).
- D. The servers were performing a backup of data when they lost power.

**Correct Answer:** ABC

**Section:** (none)

**Explanation**

**Explanation/Reference:**

**QUESTION 239**

Which of the following is the actual size of the rack unit, U?

- A. 1.25 inch
  - B. 1.75 inch
  - C. 1.00 inch
  - D. 0.75 inch
- "Pass Any Exam. Any Time." - [www.actualtests.com](http://www.actualtests.com) 79

**Correct Answer:** B

**Section:** (none)

**Explanation**

**Explanation/Reference:**

**QUESTION 240**

Which of the following SCSI signaling systems uses one return line for every outgoing line, is less susceptible to interference, signal degradation, crosstalk, and allows a cable length of up to 25 meters?

- A. HVD (High Voltage Differential)
- B. LVD (Low Voltage Differential)
- C. DE (Double Ended)
- D. SE (Single Ended)

**Correct Answer:** A

**Section:** (none)

**Explanation**

**Explanation/Reference:**

"Pass Any Exam. Any Time." - [www.actualtests.com](http://www.actualtests.com) 80

**QUESTION 241**

A RAID monitoring system indicates that two hot-pluggable drives are experiencing periodic read/write failures. What should be done?

- A. replace one drive, allow time for automatic data recovery, and then replace the second drive
- B. wait until the drives fail, replace the drives, and rebuild the data from tape backup
- C. replace both drives at the same time and then rebuild the data from tape backup
- D. replace both drives and allow time for automatic data recovery

**Correct Answer:** A

**Section:** (none)

**Explanation**

**Explanation/Reference:**

"Pass Any Exam. Any Time." - [www.actualtests.com](http://www.actualtests.com) 5

**QUESTION 242**

A UPS (Uninterruptible Power Supply) is being selected for a remote office. The correct size UPS (Uninterruptible Power Supply) needs to be determined. Which formula should be used to determine the load requirements?

- A.  $kVA = Volts \times Amperes$
- B.  $VA = kW \times 1000 \times Amperes$
- C.  $VA = Volts \times Amperes$
- D.  $Watts = Current \times Voltage$

**Correct Answer:** C

**Section:** (none)

**Explanation**

**Explanation/Reference:**

**QUESTION 243**

A customer has a system with two 9 GB drives that are hardware mirrored on an Ultra SCSI RAID controller. Using the same size drives, they want to plan for 63 GB of storage space. Which of the following configurations

offers the MOST efficient solution?

- A. RAID 5 with twelve additional drives
- B. RAID 5 with seven additional drives
- C. RAID 0+1 with seven additional drives
- D. RAID 0+1 with twelve additional drives

**Correct Answer:** D

**Section:** (none)

**Explanation**

**Explanation/Reference:**

#### **QUESTION 244**

A mission-critical server crashed on Tuesday morning at 9:24 a.m. and needs to be fully restored from tape that same day. A tape rotation scheme was implemented a month ago. Full backups are taken on Sunday at 1:00 a.m. and differentials for the remaining days of the week are at the same time.

How many tape sets are needed to restore the server?

- A. one tape set
- B. two tape sets
- C. four tape sets
- D. three tape sets

**Correct Answer:** B

**Section:** (none)

**Explanation**

**Explanation/Reference:**

#### **QUESTION 245**

There is a power outage at a company during the night, and the power is restored the next morning. Upon bootup, the server starts performing file system integrity checks. Which three are possible causes of this anomaly? (Select THREE)

- A. The UPS (Uninterruptible Power Supply) VA rating was too low for the server.
- B. There was a communication error between the UPS (Uninterruptible Power Supply) and the servers when they lost power.
- C. There was a battery fault with the UPS (Uninterruptible Power Supply).
- D. The servers were performing a backup of data when they lost power.

**Correct Answer:** ABC

**Section:** (none)

**Explanation**

**Explanation/Reference:**

#### **QUESTION 246**

A new application is installed on a company server. Which action should be taken after the application is installed and fully functional?

- A. Nothing further is required.
- B. The new application should be benchmarked.
- C. An installation log file should be printed.
- D. A new server baseline should be created.

**Correct Answer:** D

**Section:** (none)

**Explanation**

**Explanation/Reference:**

#### **QUESTION 247**

During the installation of a new server, the following actions are performed:

"Pass Any Exam. Any Time." - [www.actualtests.com](http://www.actualtests.com) 47

Server hardware components are inventoried.

The latest BIOS and firmware are downloaded and applied. The network operating system and patches are loaded.

The after-market tape drive attached to the server fails to initialize. Which of the following is the MOST likely cause of the failure?

- A. The tape drive device driver is not enabled in the system BIOS.
- B. The tape drive is not on the backup software HCL (Hardware Compatibility List).
- C. The network operating system patches are not applied correctly.
- D. The BIOS and firmware upgrades are not properly applied.

**Correct Answer:** B

**Section:** (none)

**Explanation**

**Explanation/Reference:**

#### **QUESTION 248**

"Pass Any Exam. Any Time." - [www.actualtests.com](http://www.actualtests.com) 48

Which type of UPS (Uninterruptible Power Supply) system allows for correction of brownout and surge conditions without depleting the batteries?

- A. line interactive UPS (Uninterruptible Power Supply)
- B. offline UPS (Uninterruptible Power Supply)
- C. parallel online UPS (Uninterruptible Power Supply)
- D. online UPS (Uninterruptible Power Supply)

**Correct Answer:** A

**Section:** (none)

**Explanation**

**Explanation/Reference:**

#### **QUESTION 249**

A company server requires a seven-day backup schedule. Which backup schedule takes the LEAST time to restore in the event of a failure and ensures data integrity?



- A. one full, six incremental
- B. two full, five incremental
- C. one full, six differential
- D. seven full

**Correct Answer:** D

**Section:** (none)

**Explanation**

**Explanation/Reference:**

#### **QUESTION 250**

A new server NIC is being installed to connect to a 1000Base-SX gigabit switch. Which cable should be used to connect the NIC to the switch?

- A. Cat5 patch cable
- B. Cat5 crossover cable
- C. Multi-mode fiber cable
- D. Single-mode fiber cable

**Correct Answer:** C

**Section:** (none)

**Explanation**

**Explanation/Reference:**

#### **QUESTION 251**

An Ultra SCSI-3 adapter is being installed to support several external Ultra SCSI-3 devices. How many pins should the Ultra SCSI-3 cable have?

- A. 25
  - B. 34
  - C. 50
  - D. 68
- "Pass Any Exam. Any Time." - [www.actualtests.com](http://www.actualtests.com) 37

**Correct Answer:** D

**Section:** (none)

**Explanation**

**Explanation/Reference:**

#### **QUESTION 252**

File sharing between two or more hosts with no central point of administration is an example of which server application model?

- A. peer-to-peer application
- B. dedicated application
- C. distributed application
- D. client server application
- E. SMB (Server Message Block) share application

**Correct Answer:** A

**Section:** (none)

**Explanation**

**Explanation/Reference:**

**QUESTION 253**

A SCSI adapter with six non-hotplug HDDs is being installed in a new server. Which two should be checked before closing the cover of the server and starting it? (Select TWO)

- A. the SCSI IDs
- B. the network operating system for HDD recognition
- C. the SCSI adapter termination
- D. the SCSI chain termination

**Correct Answer:** AD

**Section:** (none)

**Explanation**

**Explanation/Reference:**

"Pass Any Exam. Any Time." - [www.actualtests.com](http://www.actualtests.com) 72

**QUESTION 254**

A system administrator wants to remotely administer a server using a Web browser-based application so he can administer remotely from any operating system. He wants to ensure that the communication is secure and that only he can log in to the server. Which three actions must the administrator take before he can administer the server? (Select THREE)

- A. use smartcard authentication
  - B. install and run the WWW service
  - C. use the HTTP over SSL protocol
  - D. use the L2TP over IPSec encryption protocol
  - E. install a X.509 compliant server
- "Pass Any Exam. Any Time." - [www.actualtests.com](http://www.actualtests.com) 4

**Correct Answer:** BCE

**Section:** (none)

**Explanation**

**Explanation/Reference:**

**QUESTION 255**

A database server has three 30 GB SCSI hard drives. A RAID array needs to be implemented that provides for the fastest I/O performance. Which RAID technology should be used?

- A. RAID 5
- B. RAID 0+1
- C. RAID 1
- D. RAID 0

**Correct Answer:** D

**Section:** (none)

**Explanation**

**Explanation/Reference:**

**QUESTION 256**

Users suddenly lose connectivity to an existing server. The server technician can ping the loopback address and the server's own IP address. However, no other device on the network can be pinged. The LAN cable is plugged in. Which of the following should the server technician check next?

- A. hub or switch
- B. DNS server
- C. network link LEDs
- D. subnet mask
- E. router or gateway

**Correct Answer: C**

**Section: (none)**

**Explanation**

**Explanation/Reference:**

**QUESTION 257**

Various performance counters are checked to determine the cause of a redeployed Web server bottleneck. It is determined that the aged SCSI hardware needs to be replaced with an upgrade, rather than upgrading the RAM. Which three readings indicate this is the appropriate course of action? (Select THREE)

- A. Current Disk Queue Length
- B. Average Disk Transfer/sec
- C. SCSI Class
- D. Disk Access Time

**Correct Answer: ABD**

**Section: (none)**

**Explanation**

**Explanation/Reference:**

**QUESTION 258**

From a local machine, connectivity with a server named server1.comptia.org is tested. It cannot be reached, but it can be accessed via the IP address. The DNS server is checked and everything seems to be functioning correctly. Which of the following is the MOST effective command to use to resolve the problem?

- A. ipconfig /registerdns
- B. nslookup server1.comptia.org  
"Pass Any Exam. Any Time." - www.actualtests.com 62
- C. ipconfig /renew
- D. ifconfig /flushdns
- E. ipconfig /flushdns

**Correct Answer: E**

**Section: (none)**

**Explanation**

**Explanation/Reference:**

**QUESTION 259**

A server hardware technician installs an external DLT (Digital Linear Tape) drive. During the boot process, the device is not recognized by the SCSI controller. Which two steps should be taken to troubleshoot the problem? (Select TWO)

- A. make sure that the DLT (Digital Linear Tape) drive has power
- B. verify that the controller is recognized by the operating system
- C. verify that the device drivers have been loaded
- D. verify the cabling is connected securely and is the proper type

**Correct Answer:** AD

**Section:** (none)

**Explanation**

**Explanation/Reference:**



<http://www.gratisexam.com/>