

Juniper JNO-660 Questions and Answers

Number: JNO-660
Passing Score: 800
Time Limit: 120 min
File Version: 23.5



<http://www.gratisexam.com/>



Juniper JNO-660 Questions and Answers

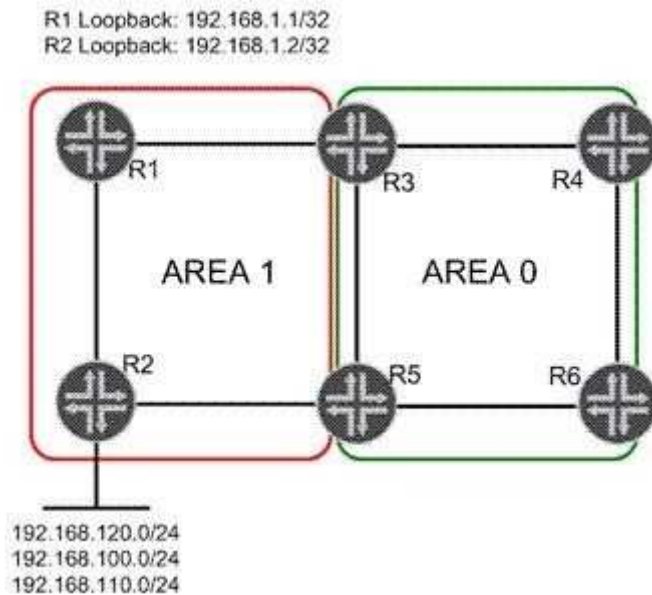
Exam Name: Service Provider Routing and Switching, Professional

For Full Set of Questions please visit: <http://www.visualexams.com/JNO-660.htm>

Visualexams

QUESTION 1

Click the Exhibit button.



In the exhibit, Area 1 is a not-so-stubby area. Three networks are redistributed into Area 1 on R2. You must summarize the redistributed network addresses in Area 1 so that only one network prefix is re-advertised into Area 0. You must also summarize the loopback addresses of R1 and R2 into a single address in Area 0. Which configuration sample on R3 and R5 will complete this task?

"Pass Any Exam. Any Time." - www.actualtests.com 2
Juniper JN0-660: Practice Exam

- ☒ A. [edit protocols ospf area 0.0.0.1]
user@router# show
nssa {
 area-range 192.168.0.0/16;
 area-range 192.168.1.0/30;
}
- ☐ B. [edit protocols ospf area 0.0.0.0]
user@router# show
nssa {
 area-range 192.168.0.0/16;
 area-range 192.168.1.0/30;
}
- ☐ C. [edit protocols ospf area 0.0.0.1]
user@router# show
nssa {
 area-range 192.168.0.0/16;
}
area-range 192.168.1.0/30;
- ☐ D. [edit protocols ospf area 0.0.0.0]
user@router# show
nssa {
 area-range 192.168.0.0/16;
}
area-range 192.168.1.0/30;

- A. Option A
B. Option B
C. Option C
D. Option D

Correct Answer: C

Section: (none)

Explanation

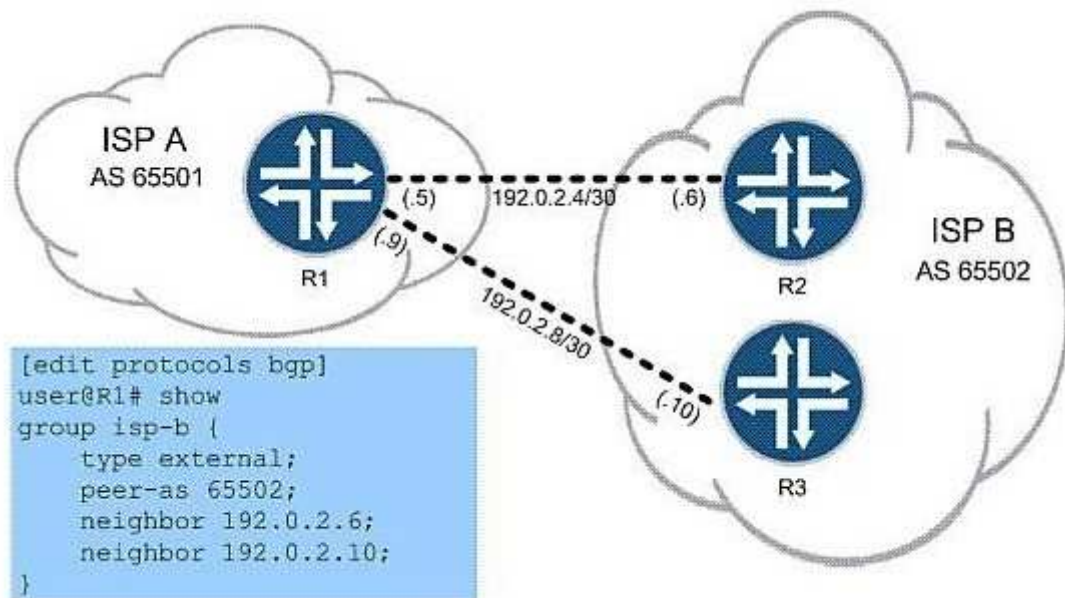
Explanation/Reference:

Explanation:

QUESTION 2

Click the Exhibit button.

"Pass Any Exam. Any Time." - www.actualtests.com 4
Juniper JN0-660: Practice Exam



In the exhibit, ISP A is charged a higher rate for traffic sent to R2. You are asked to lower costs for ISP A by configuring R1 to send traffic to R3 whenever possible. What are two ways to do this? (Choose two.)

- A. set protocols bgp group isp-b neighbor 192.0.2.6 local-preference 120
- B. set protocols bgp group isp-b neighbor 192.0.2.6 local-preference 80
- C. set protocols bgp group isp-b neighbor 192.0.2.10 local-preference 120
- D. set protocols bgp group isp-b neighbor 192.0.2.10 local-preference 80

Correct Answer: BC

Section: (none)

Explanation

Explanation/Reference:

Explanation:

QUESTION 3

You are the administrator for a network that uses IBGP. As the network grows, you must examine options to support increased scale. Which two scaling options should you consider? (Choose two.)

- A. route reflection
- B. areas
- C. zones
- D. confederations

Correct Answer: BC

Section: (none)

Explanation

Explanation/Reference:

Explanation:

QUESTION 4

You manage an MPLS network where the PE devices consist of multiple vendors. You are asked to conceal the MPLS topology for all LSPs. Which global configuration parameter will accomplish this?

- A. Configure no-decrement-ttl on the ingress router only.
- B. Configure no-propagate-ttl on the ingress router only.
- C. Configure no-decrement-ttl on all routers within the MPLS network.
- D. Configure no-propagate-ttl on all routers within the MPLS network.

Correct Answer: D

Section: (none)

Explanation

Explanation/Reference:

Explanation:

QUESTION 5

Click the Exhibit button.



<http://www.gratisexam.com/>

```
[edit protocols mpls]
user@router# show
label-switched-path to-egress {
  to 192.168.1.1;
  install 172.20.20.0/24;
}
interface all;
```

Based on the configuration in the exhibit, which statement is correct?

- A. The 172.20.20.0/24 route is installed in the inet.0 table with the next hop of the LSP.
- B. The 172.20.20.0/24 route is installed in the mpls.0 table with the next hop of the LSP.
- C. The 172.20.20.0/24 route is installed in the inet.3 table with the next hop of the LSP.
- D. The 172.20.20.0/24 route is installed in the inet6.3 table with the next hop of the LSP.

Correct Answer: C

Section: (none)

Explanation

Explanation/Reference:

Explanation:

QUESTION 6

Which CoS feature supports per-VLAN queuing and scheduling?

- A. multilevel scheduling
- B. hierarchical scheduling
- C. tagged queuing

D. per-instance queuing

Correct Answer: C

Section: (none)

Explanation

Explanation/Reference:

Explanation:

QUESTION 7

Which two statements are true about OSPFv3? (Choose two.)

- A. OSPFv3 uses a 32-bit router ID to uniquely identify a node in the network.
- B. OSPFv3 uses a 128-bit router ID to uniquely identify a node in the network.
- C. OSPFv3 routes are always preferred over OSPFv2 routes for all traffic.
- D. OSPFv3 and OSPFv2 can be configured at the same time.

Correct Answer: AD

Section: (none)

Explanation

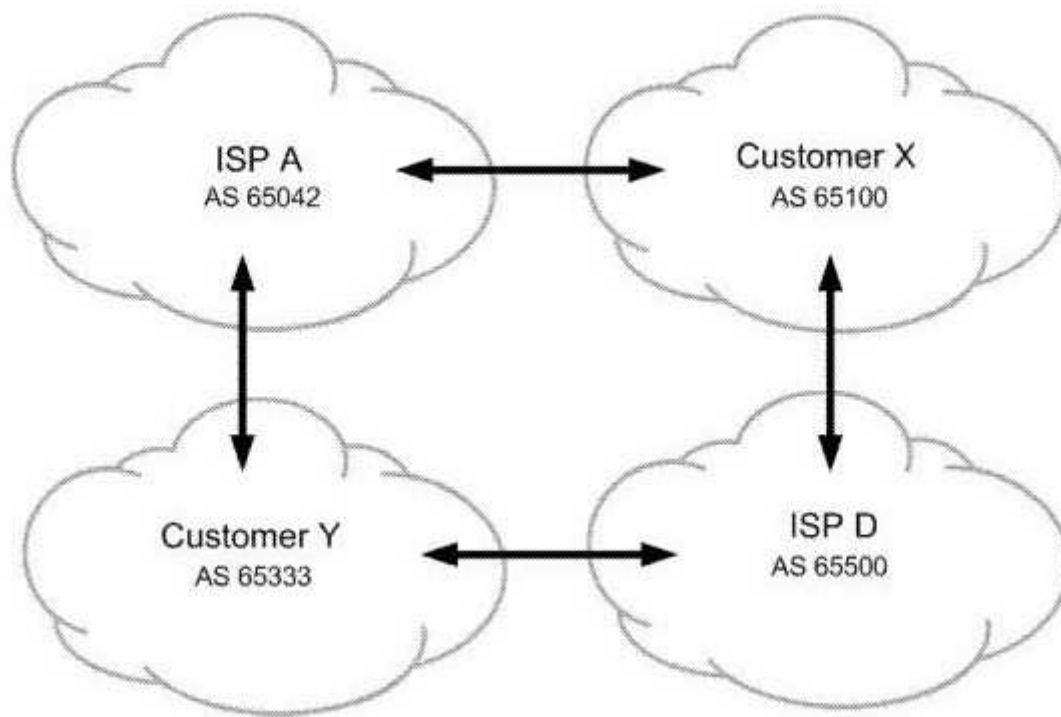
Explanation/Reference:

Explanation:

QUESTION 8

Click the Exhibit button.

"Pass Any Exam. Any Time." - www.actualtests.com 8
Juniper JN0-660: Practice Exam



All networks shown in the exhibit contain more than one BGP speaking router. You operate ISP A. You must ensure that customer Y sends their traffic to you over the directly connected link but customer Y is not used for

transit into your network. What do you do to accomplish this?

- A. Advertise routes to customer Y with the well-known no-transit community.
- B. Advertise routes to customer X with the well-known no-advertise community.
- C. Advertise routes to customer Y with the well-known no-export community.
- D. Advertise routes to customer X with the well-known as-transit community.

Correct Answer: C

Section: (none)

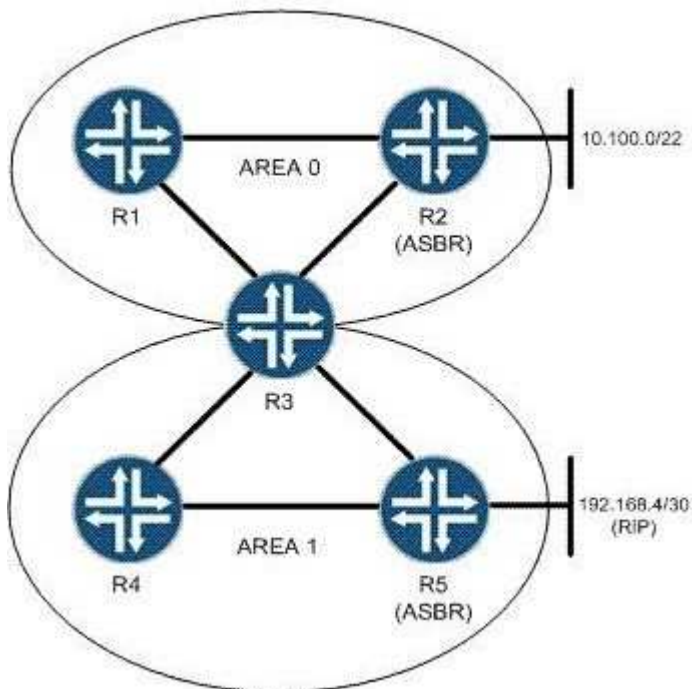
Explanation

Explanation/Reference:

Explanation:

QUESTION 9

Click the Exhibit button.



You are asked to configure an OSPF network based on the topology shown in the exhibit. You must keep the link-state database in Area 1 as small as possible. What will accomplish this?

- A. Area 0 should be configured as a stub area so that it will not announce routes into Area 1.
- B. Area 1 should be configured as an NSSA to limit the size of the link-state database.
- C. Area 1 should be configured as a stub area with no-summaries to limit the size of the link-state database.
- D. Area 0 should be configured with a virtual link to R4 to limit the size of the Area 1 link-state database.

Correct Answer: C

Section: (none)

Explanation

Explanation/Reference:

Explanation:

QUESTION 10

Click the Exhibit button.

```
drop-profiles {  
    profileA {  
        fill-level 60 drop-probability 60;  
        fill-level 80 drop-probability 70;  
        fill-level 100 drop-probability 100;  
    }  
}
```

Given the drop profile in the exhibit, what is the drop probability when the buffer reaches 90% full?

- A. 60%
- B. 70%
- C. 85%
- D. 90%

Correct Answer: B

Section: (none)

Explanation

Explanation/Reference:

Explanation:

QUESTION 11

Which operational mode command displays the number of configured forwarding classes?

- A. show interfaces queue ge-1/0/0
- B. show interfaces terse
- C. show class-of-service interface
- D. show forwarding classes

Correct Answer: A

Section: (none)

Explanation

Explanation/Reference:

Explanation:

QUESTION 12

Your multicast receivers are indirectly connected to an MX Series router. The receivers need to join multicast group 224.2.2.2. What must be configured in IGMP to receive report messages from receivers that are multiple hops away?

- A. By default, IGMP accepts report messages from indirectly connected receivers.
- B. Promiscuous mode must be enabled in IGMP.
- C. Promiscuous mode must be disabled in IGMP.
- D. DVMRP protocol must be configured.

Correct Answer: B

Section: (none)

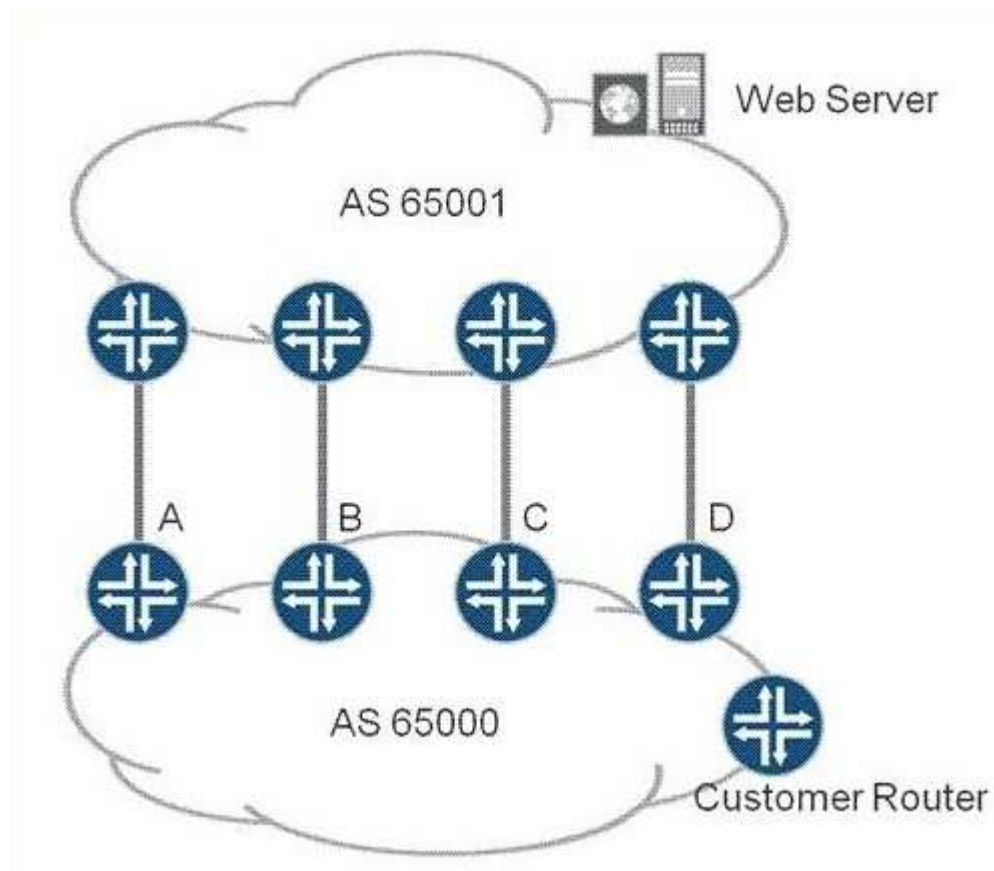
Explanation

Explanation/Reference:

Explanation:

QUESTION 13

Click the Exhibit button.



You are the administrator of AS 65000. In the exhibit, there are four links between your network (AS 65000) and your upstream provider (AS 65001).

You have an export policy on all of your routers to advertise your routes such that:

Router A: MED 100, AS Path (65000), Origin 1

Router B: MED 100, AS Path (65000 65000), Origin 0

Router C: MED 50, AS Path (65000 65000), Origin 1

"Pass Any Exam. Any Time." - www.actualtests.com 18

Juniper JN0-660: Practice Exam

Router D: MED 50, AS Path (65000), Origin 0

Through which link will traffic from the Web server enter your network (AS 65000)?

- A. Router A
- B. Router B
- C. Router C
- D. Router D

Correct Answer: D

Section: (none)

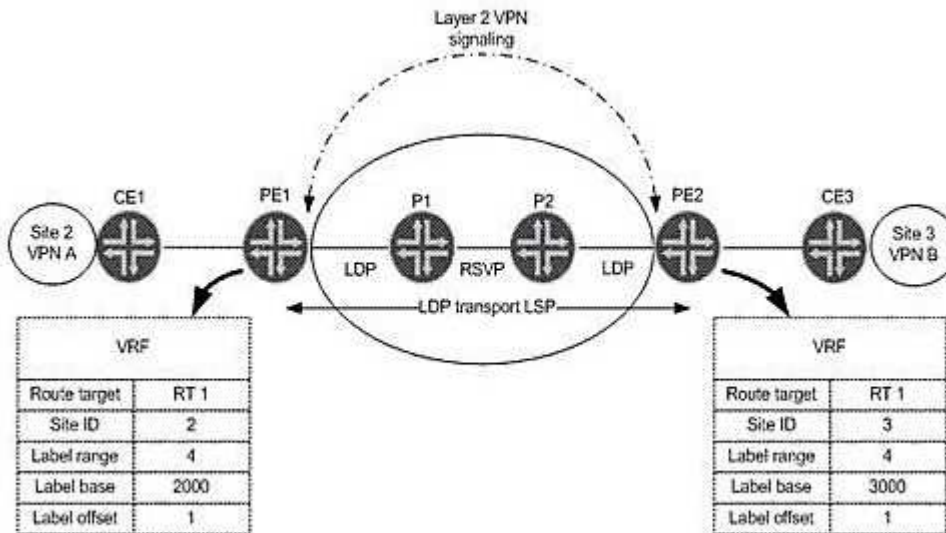
Explanation

Explanation/Reference:

Explanation:

QUESTION 14

Click the Exhibit button.



In the exhibit, on which label value does PE1 expect to receive traffic from CE3 for VPN A?

- A. 2002
- B. 3001
- C. 3002
- D. 2001

Correct Answer: A

Section: (none)

Explanation

Explanation/Reference:

Explanation:

"Pass Any Exam. Any Time." - www.actualtests.com 19

Juniper JN0-660: Practice Exam

QUESTION 15

IS-IS is configured to support both IPv4 and IPv6 routing. Which statement is true?

- A. Separate IPv4 and IPv6 hellos will be sent.
- B. IPv6 will have a separate link-state database.
- C. IS-IS v6 support must be enabled under protocols isis.
- D. IS-IS sends IPv6 topology information as new TLVs in existing LSPs.

Correct Answer: D

Section: (none)**Explanation****Explanation/Reference:**

Explanation:

"Pass Any Exam. Any Time." - www.actualtests.com 20

Juniper JN0-660: Practice Exam

QUESTION 16

Which two statements correctly describe BGP operation? (Choose two.)

- A. IBGP does not advertise routes learned from other IBGP neighbors.
- B. IBGP advertises routes learned from other IBGP neighbors.
- C. EBGP advertises routes learned from other IBGP or EBGP neighbors.
- D. EBGP does not advertise routes learned from other EBGP neighbors.

Correct Answer: BD

Section: (none)**Explanation****Explanation/Reference:**

Explanation:

QUESTION 17

Click the Exhibit button.

"Pass Any Exam. Any Time." - www.actualtests.com 22

Juniper JN0-660: Practice Exam

[edit]

```
user@R4# run show isis database
```

IS-IS level 1 link-state database:

LSP ID	Sequence	Checksum	Lifetime	Attributes
R4.00-00	0x4	0xe888	1154	L1 L2
R3.00-00	0x3	0x2ce1	1150	L1 L2
R3.02-00	0x2	0x46c7	1150	L1 L2

3 LSPs

IS-IS level 2 link-state database:

LSP ID	Sequence	Checksum	Lifetime	Attributes
R4.00-00	0x5	0xee7d	1154	L1 L2
R3.00-00	0x4	0xed1f	1150	L1 L2
R3.02-00	0x3	0x44c8	1151	L1 L2

3 LSPs

[edit]

```
user@R4#
```

Based on the output shown in the exhibit, which statement is correct?

- A. R3 is the designated intermediate system.
- B. R3 is the backup designated intermediate system.
- C. R3 has been configured with an export policy and is announcing external routes to IS-IS neighbors.

D. R3 is using both IPv4 and IPv6 resulting in two pseudonodes.

Correct Answer: A

Section: (none)

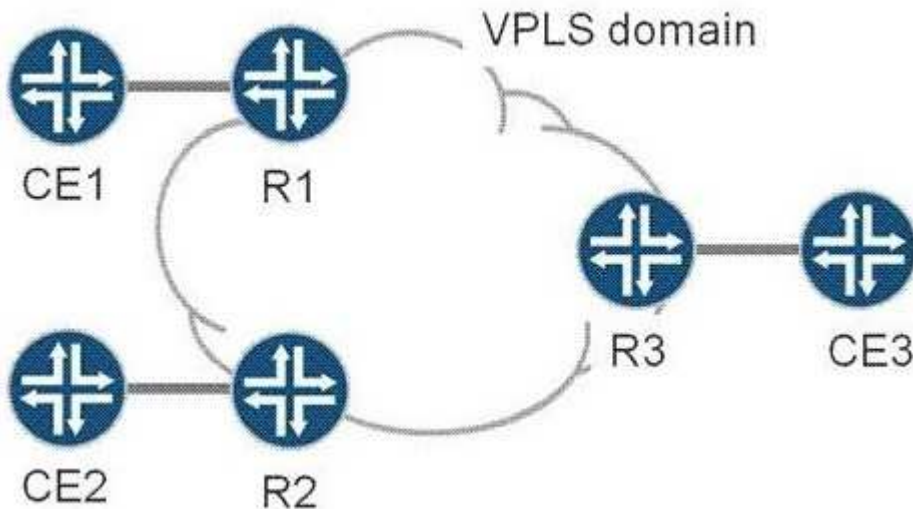
Explanation

Explanation/Reference:

Explanation:

QUESTION 18

Click the Exhibit button.



"Pass Any Exam. Any Time." - www.actualtests.com 23

Juniper JN0-660: Practice Exam

CE1, CE2, and CE3 are part of a single VPLS VPN. R1, R2, and R3 are PEs in the provider network, and have just been powered on. The VPLS domain has converged, and frames have passed between all CEs in the last minute. An Ethernet frame has just arrived at R3 from CE3. It has a source MAC address of CE3 and a destination MAC address of CE1. What does R3 do with the Ethernet frame?

- A. Drops the packet as the destination MAC address is not for R3.
- B. Drops the packet as the destination MAC address is not in R3's MAC table.
- C. Forwards the packet to R1 only.
- D. Forwards the packet to R1 and R2.

Correct Answer: C

Section: (none)

Explanation

Explanation/Reference:

Explanation:

QUESTION 19

Click the Exhibit button.

```

user@router# show
traffic-control-profiles {
  L3-unit-profile {
    scheduler-map "sched-map-example;";
    shaping-rate 30m;
    guaranteed-rate 20m;
  }
}
interfaces {
  ge-0/1/1 {
    output-traffic-control-profile "l1-port-profile;";
    unit 100 {
      output-traffic-control-profile L3-unit-profile;
    }
  }
}

```

What would happen if the guaranteed-rate command is removed from the configuration shown in the exhibit?

- A. The logical interface gets a minimal bandwidth reservation.
- B. The minimum-rate command should be configured instead.
- C. The logical interface receives no bandwidth constraints.
- D. The transmit-rate command should be configured instead.

Correct Answer: A

Section: (none)

Explanation

Explanation/Reference:

Explanation:

"Pass Any Exam. Any Time." - www.actualtests.com 24
 Juniper JN0-660: Practice Exam

QUESTION 20

Click the Exhibit button.

"Pass Any Exam. Any Time." - www.actualtests.com 27
 Juniper JN0-660: Practice Exam

```

user@router> monitor traffic detail interface so-0/1/0 size 1514
Listening on so-0/1/0
11:55:48.470418 In ISIS(186), 30:30:30:30:30:30 > 30:30:30:30:30:30, hlen: 27, v: 1,
  sys-id-len: 6 (0), max-area: 3 (0), L2 LSP
  lsp-id: 1921.6804.8001.00-00, seq: 0x00000008, lifetime: 1189s
  checksum: 0x86c9 (correct), PDU length: 186, LLL2 IS
  Area address(es) TLV #1, length: 4
    Area address (3): 49.0001
  Protocols supported TLV #129, length: 2
    NLPID(s): IPv4, IPv6
  Traffic Engineering Router ID TLV #134, length: 4
    Traffic Engineering Router ID: 192.168.48.1
  IPv4 Interface address(es) TLV #132, length: 4
    IPv4 interface address: 192.168.48.1
  Hostname TLV #137, length: 8
    Hostname: SaoPaulo
  IPv4 Internal reachability TLV #128, length: 24
    IPv4 prefix: 192.168.48.1/32
      Default Metric: 00, Internal, Distribution: up
    IPv4 prefix: 10.222.60.0/24
      Default Metric: 10, Internal, Distribution: up
  Extended IPv4 reachability TLV #135, length: 17
    IPv4 prefix: 192.168.48.1/32
      Metric: 0, Distribution: up, no sub-TLVs present
    IPv4 prefix: 10.222.60.0/24
      Metric: 10, Distribution: up, no sub-TLVs present
  IPv4 External reachability TLV #130, length: 12
    IPv4 prefix: 192.168.49.0/24
      Default Metric: 00, Internal, Distribution: up
  Extended IPv4 reachability TLV #135, length: 8
    IPv4 prefix: 192.168.49.0/24
      Metric: 0, Distribution: up, no sub-TLVs present
  IS Reachability TLV #2, length: 12
    IsNotVirtual
    IPv4 prefix: 192.168.49.0/24
      Default Metric: 00, Internal, Distribution: up
  Extended IPv4 reachability TLV #135, length: 8
    IPv4 prefix: 192.168.49.0/24
      Metric: 0, Distribution: up, no sub-TLVs present
  IS Reachability TLV #2, length: 12
    IsNotVirtual
    IS Neighbor: 1921.6805.2001.00, Default Metric: 10, Internal
  Extended IS Reachability TLV #22, length: 23
    IS Neighbor: 1921.6805.2001.00, Metric: 10, sub-TLVs present (12)
      IPv4 interface address: 10.222.60.2
      IPv4 neighbor address: 10.222.60.1
  Authentication TLV #10, length: 17
    HMAC-MD5 password: 00bb32fd7712bcea6003e516e2333077

```

The output in the exhibit was captured on an interface. Which three statements are true about the configuration on the router with hostname SaoPaulo? (Choose three.)

- A. Wide metrics is not in use.
- B. The router has the overload bit set to "on".
- C. Authentication is enabled.
- D. System ID is 1921.6805.2001.
- E. Level 2 routing is enabled.

Correct Answer: ACE

Section: (none)

Explanation

Explanation/Reference:

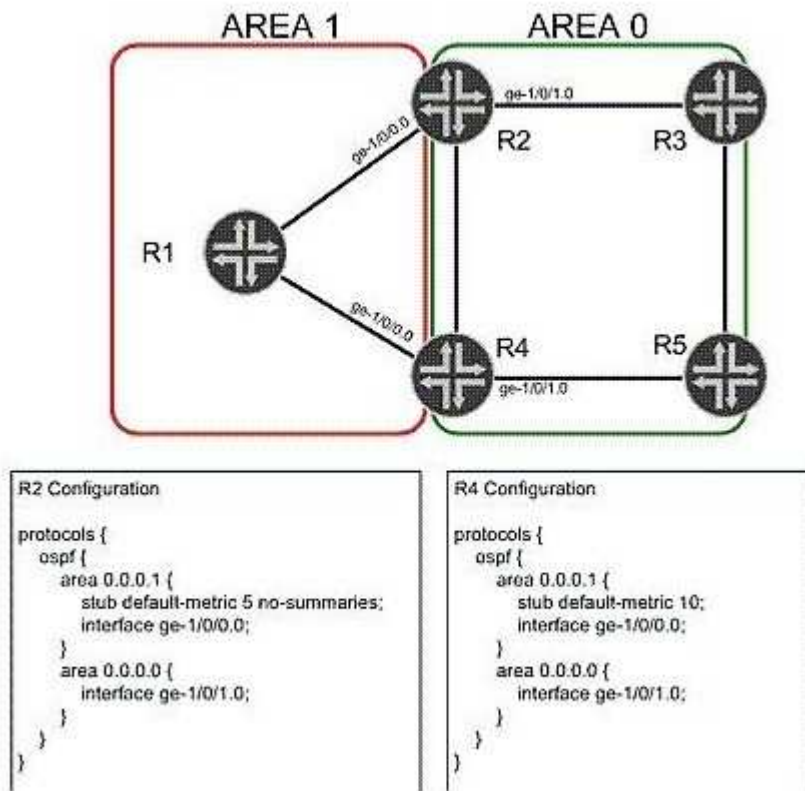
Explanation:

QUESTION 21

Click the Exhibit button.

"Pass Any Exam. Any Time." - www.actualtests.com 28

Juniper JN0-660: Practice Exam



R2 and R3 advertise a default route into Area 1. Based on the configurations in the exhibit, which statement is true? (Choose two.)

- A. Traffic from R1 to internal OSPF destinations in Area 0 will always transit R4.
- B. Traffic from R1 to internal OSPF destinations in Area 0 will always transit R2.
- C. Traffic from R1 to external OSPF destinations in Area 0 will always transit R2.
- D. Traffic from R1 to external OSPF destinations in Area 0 will always transit R4.

Correct Answer: AC

Section: (none)

Explanation

Explanation/Reference:

Explanation:

QUESTION 22

Router R5 has the overload parameter configured. Which statement is true?

- A. R5 will purge its LSAs from the network until the overload condition is cleared.

- B. R5 will increase its link metrics to 65535 and will stop forwarding transit traffic to OSPF destinations.
- C. R5 will increase its link metrics to 65535 and will continue to forward transit traffic to OSPF destinations.
- D. R5 will send an overload LSA to its neighbors to indicate it is in the overload state.

Correct Answer: C

Section: (none)

Explanation

Explanation/Reference:

Explanation:

QUESTION 23

"Pass Any Exam. Any Time." - www.actualtests.com 30

Juniper JN0-660: Practice Exam

What is a limitation of LDP?

- A. Traffic must follow explicitly configured paths.
- B. It requires a full mesh of LSPs throughout the network.
- C. It requires a traffic engineering database (TED).
- D. It does not support traffic engineering.

Correct Answer: C

Section: (none)

Explanation

Explanation/Reference:

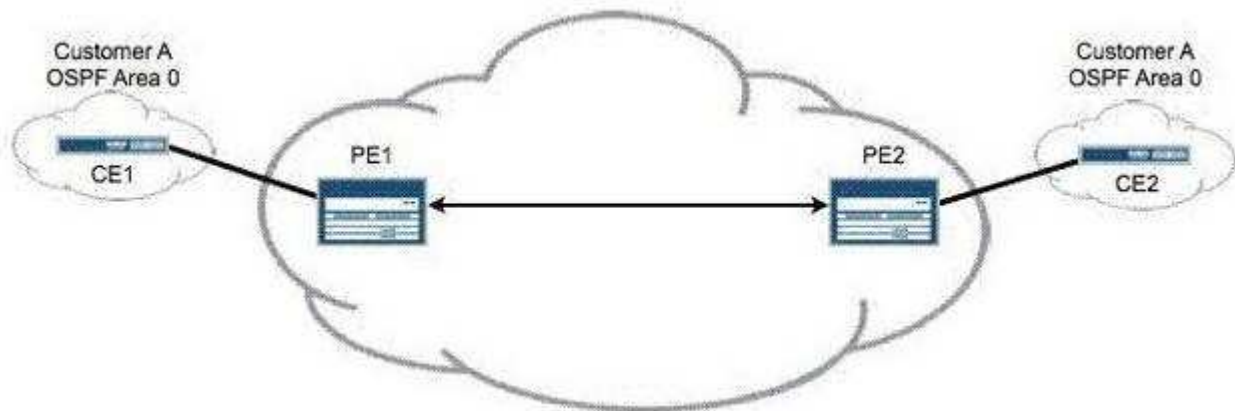
Explanation:

QUESTION 24

Click the Exhibit button.

"Pass Any Exam. Any Time." - www.actualtests.com 32

Juniper JN0-660: Practice Exam



Referring to the exhibit, your network management systems have alerted you to a loss of connectivity to the CE2 router in your Layer 3 VPN. The loopback address of the CE router is 10.10.1.1/32. Which operational command on PE2 verifies connectivity across the PE-CE link?

- A. ping 10.10.1.1
- B. ping 10.10.1.1 table customer-a
- C. ping 10.10.1.1 instance customer-a

D. ping 10.10.1.1 routing-instance customer-a

Correct Answer: D

Section: (none)

Explanation

Explanation/Reference:

Explanation:

QUESTION 25

Click the Exhibit button.

```
customer-vpn {  
    instance-type vrf;  
    interface ge-0/0/0.0;  
    route-distinguisher 172.16.1.1:1;  
    vrf-target target:65000:100;  
}
```

You are configuring a new PE router in your Layer 3 VPN. A remote PE router is using the configuration shown in the exhibit. Which configuration is needed to receive customer-vpn routes from the remote PE?

"Pass Any Exam. Any Time." - www.actualtests.com 33
Juniper JN0-660: Practice Exam

- ☐ A. customer-vpn {
 instance-type vrf;
 interface ge-0/0/1.0;
 route-distinguisher 172.16.1.2:1;
 vrf-target {
 export target:65000:100;
 import target:65000:200;
 }
}
- ☐ B. customer-vpn {
 instance-type vrf;
 interface ge-0/0/1.0;
 route-distinguisher 172.16.1.2:1;
 vrf-target {
 export target:65000:200;
 import target:65000:200;
 }
}
- ☐ C. customer-vpn {
 instance-type vrf;
 interface ge-0/0/1.0;
 route-distinguisher 172.16.1.2:1;
 vrf-target target:65000:100;
}
- ☐ D. customer-vpn {
 instance-type vrf;
 interface ge-0/0/1.0;
 route-distinguisher 172.16.1.2:1;
 vrf-target target:65000:200;
}

- A. Option A
B. Option B
C. Option C
D. Option D

Correct Answer: C

Section: (none)

Explanation

Explanation/Reference:

Explanation:

"Pass Any Exam. Any Time." - www.actualtests.com 34
Juniper JN0-660: Practice Exam

QUESTION 26

You are evaluating a routing policy for an ISP and you find the `^42+ . * (23|9)$` regular expression. Which three AS paths match the regular expression? (Choose three.)

- A. 42 42 42 42 9
- B. 42 42 23 500
- C. 42 42 42 60 9
- D. 42 60 23 9 42
- E. 42 69 500 23

Correct Answer: ACE

Section: (none)

Explanation

Explanation/Reference:

Explanation:

QUESTION 27

Click the Exhibit button.

"Pass Any Exam. Any Time." - www.actualtests.com 36
Juniper JN0-660: Practice Exam

```
user@PE2> show l2circuit connections
Layer-2 Circuit Connections:
```

Legend for connection status (St)

EI -- encapsulation invalid	NP -- interface h/w not present
MM -- mtu mismatch	Dn -- down
EM -- encapsulation mismatch	VC-Dn -- Virtual circuit Down
CM -- control-word mismatch	Up -- operational
VM -- vlan id mismatch	CF -- Call admission control failure
OL -- no outgoing label	IB -- TDM incompatible bitrate
NC -- intf encaps not CCC/TOC	TM -- TDM misconfiguration
BK -- Backup Connection	ST -- Standby Connection
CB -- rcvd cell-bundle size bad	SP -- Static Pseudowire
LD -- local site signaled down	RS -- remote site standby
RD -- remote site signaled down	XX -- unknown

Legend for interface status

Up -- operational
Dn -- down

Neighbor: 192.168.7.1

Interface	Type	St	Time last up	# Up trans
ge-1/0/0.600(vc 5)	rmt	EM		

```
user@PE1> show ldp database session 192.168.7.1
```

Input label database, 192.168.5.1:0--192.168.7.1:0

Label	Prefix
299792	192.168.5.1/32
299776	192.168.6.1/32
3	192.168.7.1/32
299824	L2CKT CtrlWord ETHERNET VC 5

Output label database, 192.168.5.1:0--192.168.7.1:0

Label	Prefix
3	192.168.5.1/32
299776	192.168.6.1/32
299792	192.168.7.1/32
299808	L2CKT CtrlWord VLAN VC 5

Customer A is complaining that CE1 and CE2 cannot form an OSPF adjacency across your LDP Layer 2 circuit. The physical topology of the network is CE1-PE1-P-PE2-CE2. PE1's loopback is 192.168.5.1, P's loopback is 192.168.6.1, and PE2's loopback is 192.168.7.1 Referring to the output in the exhibit, what is the problem?

- A. mismatched virtual circuit ID values
- B. mismatched interface encapsulations
- C. incorrect PE-CE interface configuration
- D. extended LDP neighbor not established

Correct Answer: B

Section: (none)

Explanation

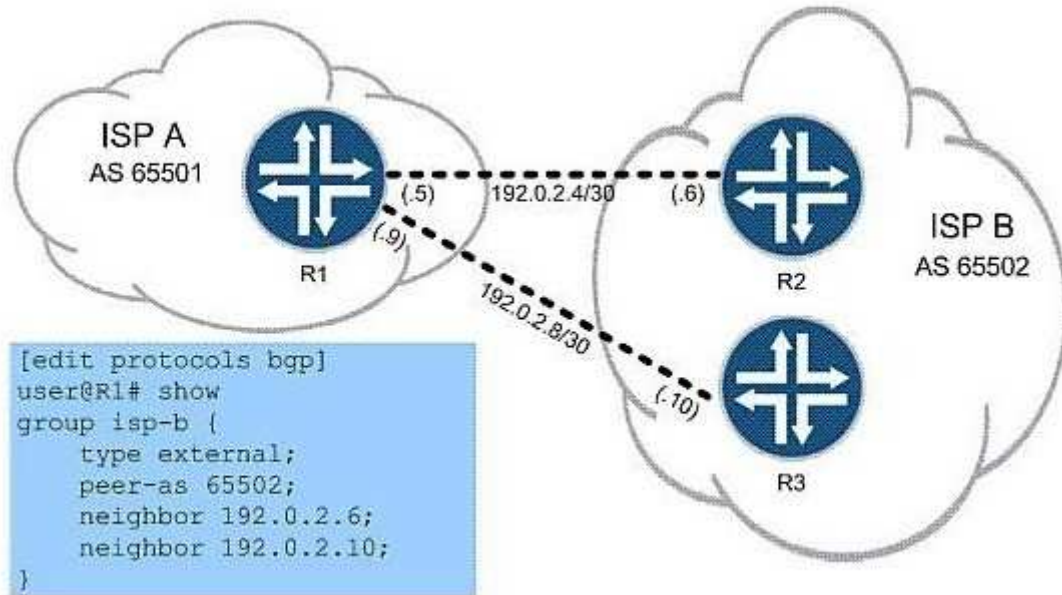
Explanation/Reference:

Explanation:

QUESTION 28

Click the Exhibit button.

"Pass Any Exam. Any Time." - www.actualtests.com 38
Juniper JN0-660: Practice Exam



You work for ISP A, as shown in the exhibit, and must configure R1 to use load balancing across both available links to ISP B's network. Which command do you use to finish the configuration?

- A. set protocols bgp group isp-b multipath
- B. set routing-options forwarding-table export per-packet
- C. set protocols bgp group isp-b multihop
- D. set routing-options forwarding-table load-balance

Correct Answer: A

Section: (none)

Explanation

Explanation/Reference:

Explanation:

QUESTION 29

Click the Exhibit button.

"Pass Any Exam. Any Time." - www.actualtests.com 39
Juniper JN0-660: Practice Exam

```

user@R5# run show bgp neighbor
Peer: 192.168.56.1+179 AS 65000 Local: 192.168.56.5+56710 AS 65000
  Type: Internal      State: Established      Flags: <Sync>
  Last State: OpenConfirm  Last Event: RecvKeepAlive
  Last Error: Open Message Error
  Options: <Preference LocalAddress Refresh>
  Local Address: 192.168.56.5 Holdtime: 90 Preference: 170
  Number of flaps: 1
  Last flap event: RecvNotify
  Error: 'Open Message Error' Sent: 2 Recv: 0
  Error: 'Cease' Sent: 0 Recv: 1
  Peer ID: 192.168.56.1      Local ID: 192.168.56.5      Active Holdtime: 90
  Keepalive Interval: 30      Peer index: 0
  BFD: disabled, down
  NLRI for restart configured on peer: inet-unicast
  NLRI advertised by peer: inet-unicast inet6-unicast
  NLRI for this session: inet-unicast
  Peer supports Refresh capability (2)
  Restart time configured on the peer: 120
  Stale routes from peer are kept for: 300
  Restart time requested by this peer: 120
  NLRI that peer supports restart for: inet-unicast inet6-unicast
  NLRI that restart is negotiated for: inet-unicast
  NLRI of received end-of-rib markers: inet-unicast
  NLRI of all end-of-rib markers sent: inet-unicast
  Peer supports 4 byte AS extension (peer-as 65000)
  Peer does not support Addpath
  Table inet.0 Bit: 10000
    RIB State: BGP restart is complete
    Send state: in sync
    Active prefixes: 0
    Received prefixes: 0
    Accepted prefixes: 0
    Suppressed due to damping: 0
    Advertised prefixes: 0
  Last traffic (seconds): Received 4      Sent 4      Checked 4
  Input messages: Total 3      Updates 1      Refreshes 0      Octets 101
  Output messages: Total 7      Updates 0      Refreshes 0      Octets 284
  Output Queue[0]: 0

```

The exhibit shows the output of a Junos show bgp neighbor command. Which two statements are true? (Choose two.)

- A. IPv4 routes will be exchanged over this session.
- B. IPv6 routes will be exchanged over this session.
- C. The local router initiated the BGP session.
- D. BFD keepalive is configured to 30 seconds.

Correct Answer: AC

Section: (none)

Explanation

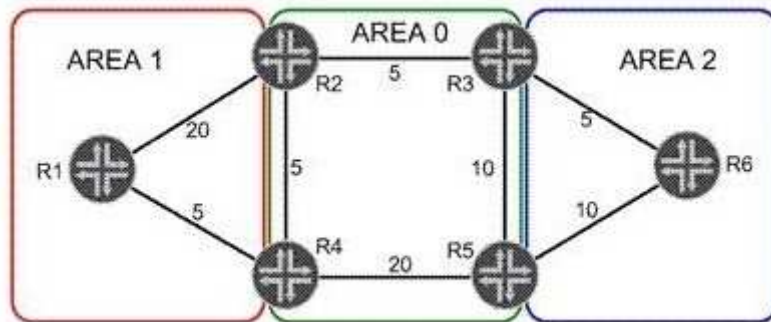
Explanation/Reference:

Explanation:

QUESTION 30

Click the Exhibit button.

"Pass Any Exam. Any Time." - www.actualtests.com 40
Juniper JN0-660: Practice Exam



Referring to the OSPF link metrics in the exhibit, which path will traffic from R6 take to reach R1?

- A. R6, R3, R2, R4, R1
- B. R6, R3, R2, R1
- C. R6, R5, R4, R1
- D. R6, R5, R3, R2, R4, R1

Correct Answer: B

Section: (none)

Explanation

Explanation/Reference:

Explanation:

QUESTION 31

In an interdomain multicast deployment scenario, an RP1 is in AS1 and an RP2 is in AS2. MSDP is configured between RP1 and RP2. In which routing table on RP1 are source-active messages (SAs) received from RP2 by default?

- A. inet.0
- B. inet.2
- C. inet.1
- D. inet.4

Correct Answer: D

Section: (none)

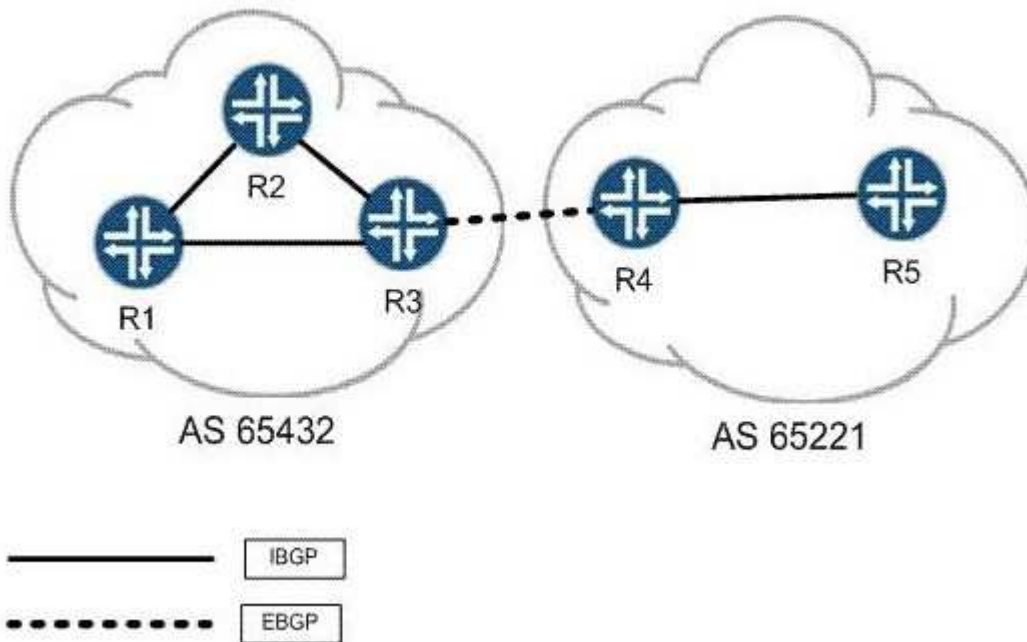
Explanation

Explanation/Reference:

Explanation:

QUESTION 32

Click the Exhibit button.



R3 and R4 want to establish an EBGP session between each other's loopback addresses. They have each configured static routes to the other's loopback address and can ping from loopback to loopback. Their EBGP session is configured with correct neighbor and local addresses. The

"Pass Any Exam. Any Time." - www.actualtests.com 44

Juniper JN0-660: Practice Exam

correct AS numbers have been specified at the [routing-options] hierarchy as well. Considering the topology in the exhibit, which statement is true?

- A. BGP's protocol preference must be adjusted to be lower than protocol static for the session to establish.
- B. Each side must configure multipath for the session to establish.
- C. Each peer must specify a local-as within their EBGP configuration for the session to establish.
- D. Each peer must configure multihop for the session to establish.

Correct Answer: D

Section: (none)

Explanation

Explanation/Reference:

Explanation:

QUESTION 33

You are facing BGP scaling issues and decide to add dedicated route reflectors to your network. You notice that VPN routes are not being advertised by your route reflectors. Which three actions can you take to solve this? (Choose three.)

- A. Add a static default route to inet.3 and/or inet6.3 on the route reflectors.
- B. Add a full mesh of MPLS LSPs between all of the route reflectors.
- C. Add MPLS LSPs between the route reflectors and their client routers.
- D. Add a static default route to inet.3 and/or inet6.3 on all of the client routers.
- E. Use rib-groups to add IGP routes to inet.3 and/or inet6.3 on the route reflectors.

Correct Answer: ACE

Section: (none)

Explanation

Explanation/Reference:

Explanation:

QUESTION 34

What is the purpose of the no-cspf command?

- A. to successfully signal the LSP across the network regardless of constraints
- B. to delete the CSPF database
- C. to ignore OSPF when calculating the ERO
- D. to successfully signal the LSP only if the default IGP path (or named path) meets all constraints

Correct Answer: D

Section: (none)

Explanation

Explanation/Reference:

Explanation:

QUESTION 35

An OSPF network has been designed with multiple areas to improve scalability. Which two statements are true? (Choose two.)

- A. Each router in the OSPF network runs the shortest-path-first algorithm to determine paths "Pass Any Exam. Any Time." - www.actualtests.com 46
Juniper JN0-660: Practice Exam
through the network.
- B. The Area Border Router for each area runs the shortest-path-first algorithm and floods its results through the area.
- C. Each area must have at least one link connecting it to each of the other areas of the OSPF network.
- D. OSPF provides loop-free routing within an OSPF routing domain, but does not guarantee symmetrical routing.

Correct Answer: AD

Section: (none)

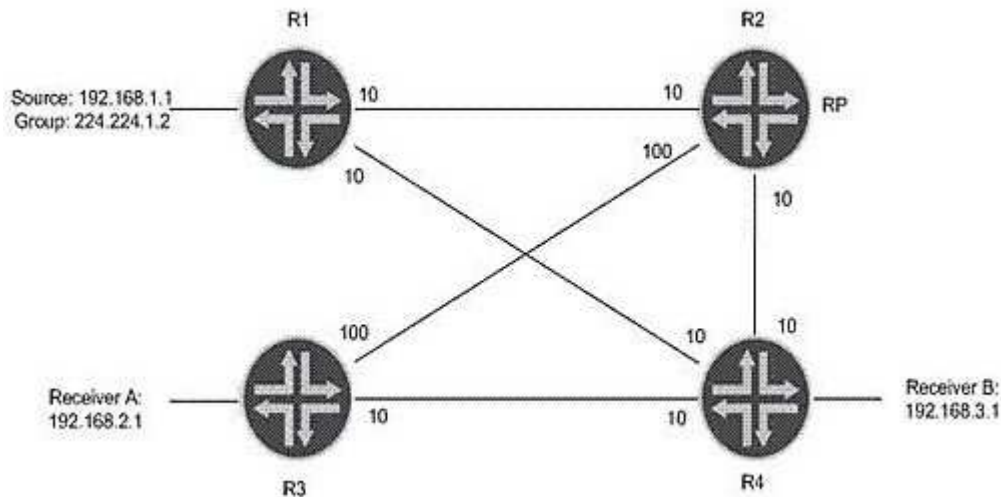
Explanation

Explanation/Reference:

Explanation:

QUESTION 36

Click the Exhibit button.



In the exhibit, what happens if the source starts sending multicast traffic toward R1 and there are receivers registered at the RP?

- A. R1 encapsulates the multicast packets into a PIM register multicast packet.
- B. R1 encapsulates the multicast packets into PIM join unicast messages.
- C. R1 forwards the multicast packets on the S,G tree towards the RP.
- D. R1 tunnels the multicast packets in PIM register messages toward the RP.

Correct Answer: D

Section: (none)

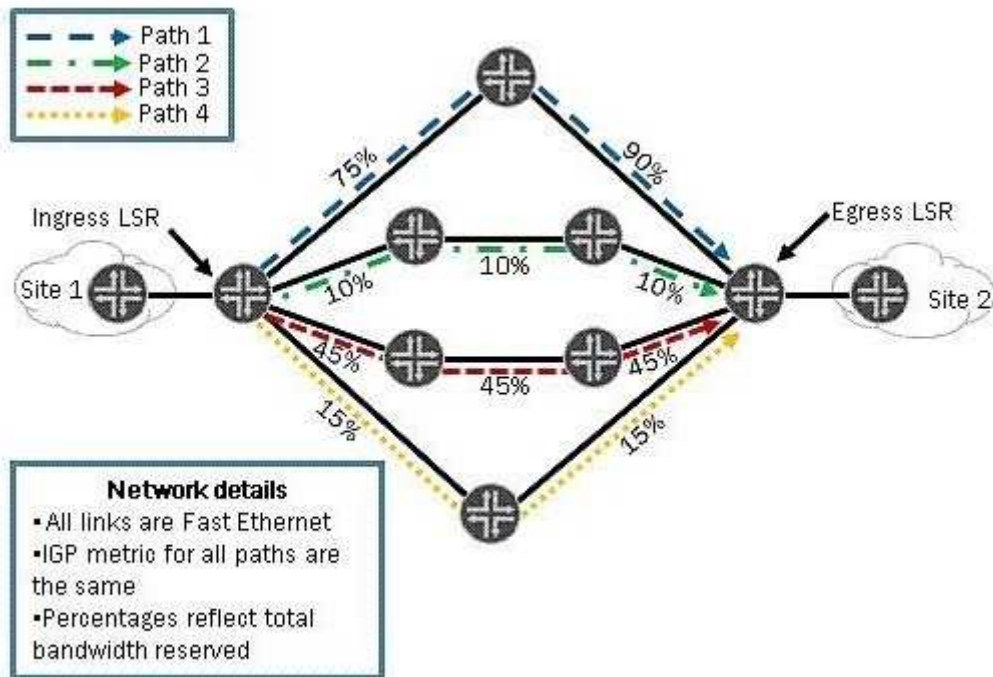
Explanation

Explanation/Reference:

Explanation:

QUESTION 37

Click the Exhibit button.



You have an MPLS network and you have configured most-fill as a CSPF tiebreaker. Using the information in the exhibit, which path will be used to signal a new LSP requiring 12 Mbps?

- A. Path 1
- B. Path 2
- C. Path 3
- D. Path 4

Correct Answer: D

Section: (none)

Explanation

Explanation/Reference:

Explanation:

QUESTION 38

Which two configuration parameters are required to configure a BGP-signaled VPLS service? (Choose two.)

- A. vpls-id
- B. site-identifier
- C. route-distinguisher
- D. site-address

Correct Answer: BC

Section: (none)

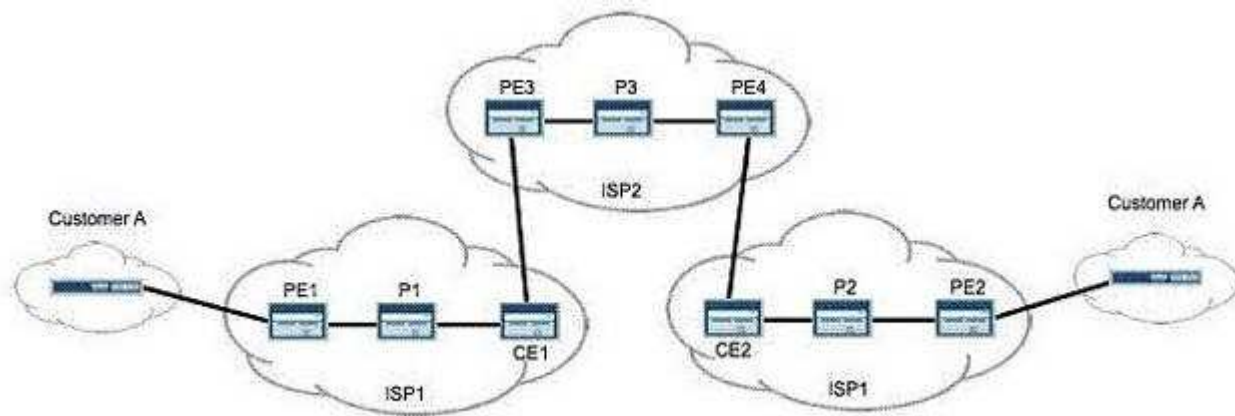
Explanation

Explanation/Reference:

Explanation:

QUESTION 39

Click the Exhibit button.



Referring to the exhibit, PE2 requires the loopback of PE1 to appear in the inet.3 routing table as a labeled route. Which configuration parameter is specifically required to support this?

- A. resolve-vpn
- B. family inet-vpn
- C. traffic-engineering bgp-igp
- D. traffic-engineering mpls-forwarding

Correct Answer: A

Section: (none)

Explanation

Explanation/Reference:

Explanation:

QUESTION 40

What are three Junos automation scripts? (Choose three.)

"Pass Any Exam. Any Time." - www.actualtests.com 51

Juniper JN0-660: Practice Exam

- A. op scripts
- B. pulse scripts
- C. commit scripts
- D. event scripts
- E. action scripts

Correct Answer: ACD

Section: (none)

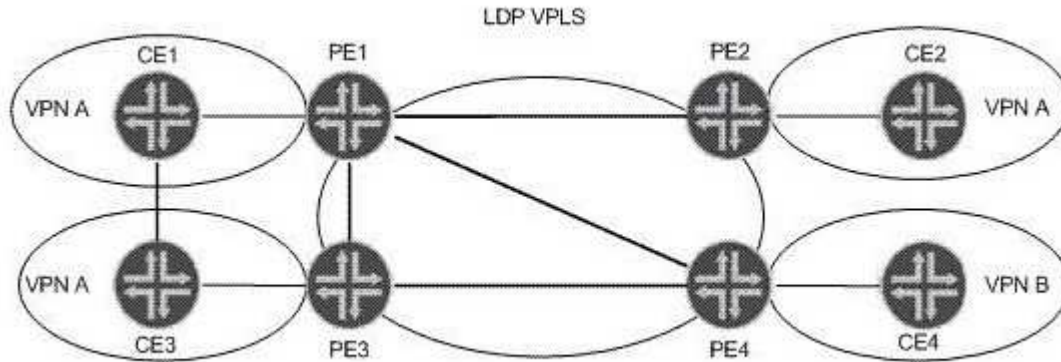
Explanation

Explanation/Reference:

Explanation:

QUESTION 41

Click the Exhibit button.



Your IT manager asks you to describe a benefit of migrating from LDP VPLS towards BGP VPLS considering the operational network shown in the exhibit. What can you tell your manager?

- A. Using BGP signaling improves scaling, because a full mesh of transport LSPs is not needed.
- B. MAC addresses are learned through BGP instead of LDP, which improves scaling.
- C. Ingress PE replication can be reduced, because BGP VPLS supports P2MP LSPs.
- D. Configuration overhead is reduced when adding new sites or new VPNs.

Correct Answer: D

Section: (none)

Explanation

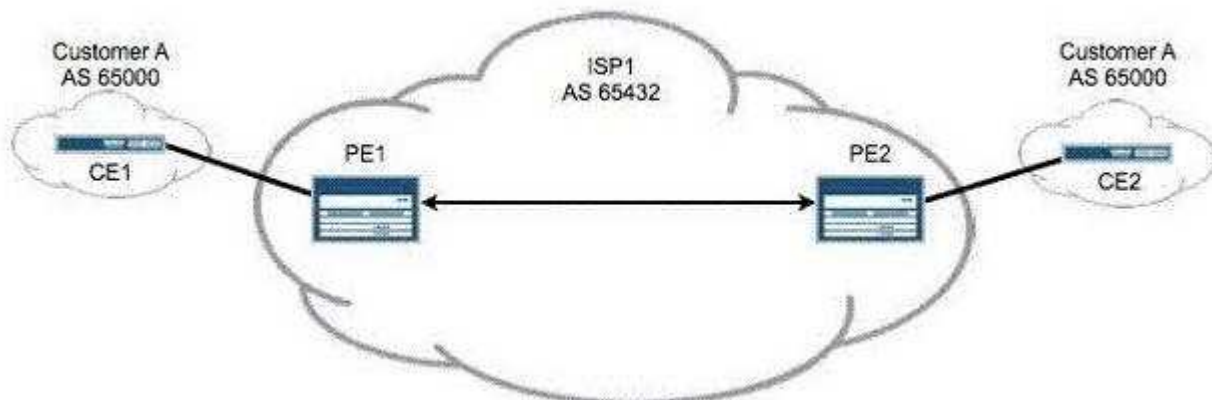
Explanation/Reference:

Explanation:

QUESTION 42

Click the Exhibit button.

"Pass Any Exam. Any Time." - www.actualtests.com 52
Juniper JN0-660: Practice Exam



In the exhibit, your Layer 3 VPN uses BGP to send and receive routes from customers. Customer A reports that remote routes are not being received on CE2. Which configuration parameter is missing from your PE router configuration?

- A. vrf-import
- B. vrf-export
- C. as-override
- D. advertise-peer-as

Correct Answer: C

Section: (none)

Explanation

Explanation/Reference:

Explanation:

QUESTION 43

Click the Exhibit button.

"Pass Any Exam. Any Time." - www.actualtests.com 54
Juniper JN0-660: Practice Exam

```
[edit]
user@host# show class-of-service
schedulers {
    voice {
        transmit-rate percent 40;
        priority strict-high;
    }
    critical {
        transmit-rate percent 25;
        priority high;
    }
    less-critical {
        transmit-rate percent 15;
        priority medium-high;
    }
    data {
        transmit-rate percent 10;
        priority medium-low;
    }
    left-over {
        transmit-rate percent 5;
        priority low;
    }
}
```

On your MX Series router, traffic using the voice scheduler has exceeded its transmit rate. All other data is currently in profile. Referring to the exhibit, which statement is correct?

- A. The voice queue is serviced later than the less-critical queue.
- B. The voice queue is serviced later than the left-over queue.
- C. The voice queue is serviced before the critical queue.
- D. The voice queue is serviced after data queue.

Correct Answer: C

Section: (none)

Explanation

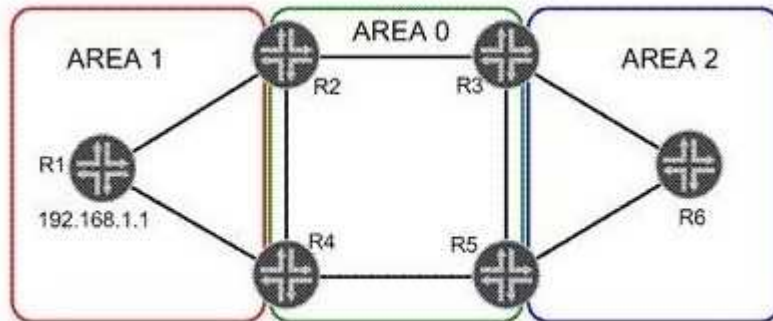
Explanation/Reference:

Explanation:

QUESTION 44

Click the Exhibit button.

"Pass Any Exam. Any Time." - www.actualtests.com 55
Juniper JN0-660: Practice Exam



In the exhibit, R1 has a loopback address of 192.168.1.1. Its loopback interface is included in OSPF Area 1. Which two statements are true? (Choose two.)

- A. R1 will advertise the loopback address in a Type 1 LSA.
- B. R1 will advertise the loopback address in a Type 3 LSA.
- C. Area 0 will see the loopback address in a Type 1 LSA.
- D. Area 0 will see the loopback address in a Type 3 LSA.

Correct Answer: AD

Section: (none)

Explanation

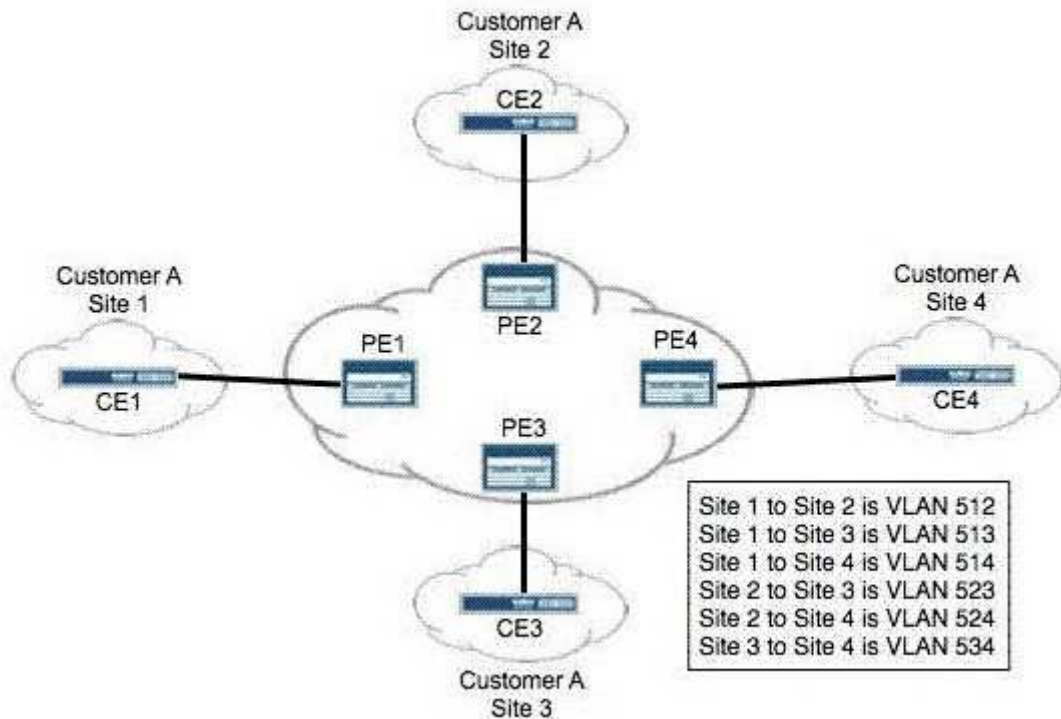
Explanation/Reference:

Explanation:

QUESTION 45

Click the Exhibit button.

"Pass Any Exam. Any Time." - www.actualtests.com 56
Juniper JN0-660: Practice Exam



You are provisioning a full-mesh BGP Layer 2 VPN for Customer A. The customer has four remote sites in their network. Using best practices, you assigned interface unit numbers matching the assigned VLAN numbers. Which Layer 2 VPN configuration is correct for PE2?

- A. `l2vpn { encapsulation-type ethernet-vlan; site CE2 { site-identifier 2; interface ge-0/0/0.523; interface ge-0/0/0.512; interface ge-0/0/0.524; }}`
- B. `l2vpn { encapsulation-type ethernet-vlan; site CE2 { site-identifier 2; interface ge-0/0/0.523; interface ge-0/0/0.524; interface ge-0/0/0.512; }}`
- C. `l2vpn { encapsulation-type ethernet-vlan; site CE2 { site-identifier 2; interface ge-0/0/0.512; interface ge-0/0/0.523; interface ge-0/0/0.524; }}`
- D. `l2vpn { encapsulation-type ethernet-vlan; site CE2 { site-identifier 2; interface ge-0/0/0.512; interface ge-0/0/0.524; interface ge-0/0/0.523; }}`

Correct Answer: C

Section: (none)

Explanation

Explanation/Reference:

Explanation:

QUESTION 46

Which statement is true about IS-IS?

- A. IS-IS level 1 internal routes are announced to level 2 by default.
- B. All IS-IS level 1 routes are announced to level 2 by default.
- C. IS-IS level 2 internal routes are announced to level 1 by default.
- D. IS-IS does not share routes between level 1 and level 2 by default.

"Pass Any Exam. Any Time." - www.actualtests.com 57

Juniper JN0-660: Practice Exam

Correct Answer: A

Section: (none)

Explanation

Explanation/Reference:

Explanation:

QUESTION 47

Click the Exhibit button.

"Pass Any Exam. Any Time." - www.actualtests.com 58

Juniper JN0-660: Practice Exam

```
[edit]
root@R3# run show isis database
IS-IS level 1 link-state database:
LSP ID                Sequence Checksum Lifetime Attributes
R3.00-00                0x1    0x2748      1146 L1 L2
  1 LSPs

IS-IS level 2 link-state database:
LSP ID                Sequence Checksum Lifetime Attributes
R4.00-00                0x2    0xda98      1150 L1 L2
R3.00-00                0x2    0x2de1      1152 L1 L2
R3.02-00                0x1    0x48c6      1152 L1 L2
  3 LSPs
```

Based on the output in the exhibit, which statement is correct?

- A. R4 has been configured with an IS-IS export policy and is announcing external routing information.
- B. R3 and R4 have an adjacency at both level 1 and level 2.
- C. R3 has been configured so that it is not used for transit traffic.
- D. R3 and R4 have only a level 2 adjacency.

Correct Answer: D

Section: (none)

Explanation

Explanation/Reference:

Explanation:

QUESTION 48

Click the Exhibit button.

```

user@PE2> show route advertising-protocol bgp 192.168.3.1

customer-vpn.inet.0: 5 destinations, 5 routes (5 active, 0 holddown, 0 hidden)
  Prefix  Nexthop      MED      Lclpref    AS path
* 172.16.2.0/24      Self                100      I
* 172.16.20.0/30     Self                100      65001 I
* 172.16.20.4/30     Self                100      65001 I
* 172.16.20.8/30     Self                100      65001 I

user@PE1> show route receive-protocol bgp 192.168.4.1

inet.0: 6 destinations, 6 routes (6 active, 0 holddown, 0 hidden)

inet.3: 1 destinations, 1 routes (1 active, 0 holddown, 0 hidden)

customer-vpn.inet.0: 2 destinations, 2 routes (2 active, 0 holddown, 0 hidden)

iso.0: 1 destinations, 1 routes (1 active, 0 holddown, 0 hidden)

mpls.0: 5 destinations, 5 routes (5 active, 0 holddown, 0 hidden)

```

Customer A is complaining that routes advertised from the CE2 router are not being received on

"Pass Any Exam. Any Time." - www.actualtests.com 59

Juniper JN0-660: Practice Exam

the CE1 router. The physical topology of the network is CE1-PE1-PE2-CE2. The CE1-PE1 subnet is 172.16.1.0/24. The CE2-PE2 subnet is 172.16.2.0/24. PE1's loopback is 192.168.3.1 and PE2's loopback is 192.168.4.1. Referring to the output in the exhibit, what is the problem?

- A. No LSP exists between PE1 and PE2.
- B. Route targets are not properly configured.
- C. as-override is not configured in the VRFs.
- D. family inet-vpn is not configured on the PEs.

Correct Answer: B

Section: (none)

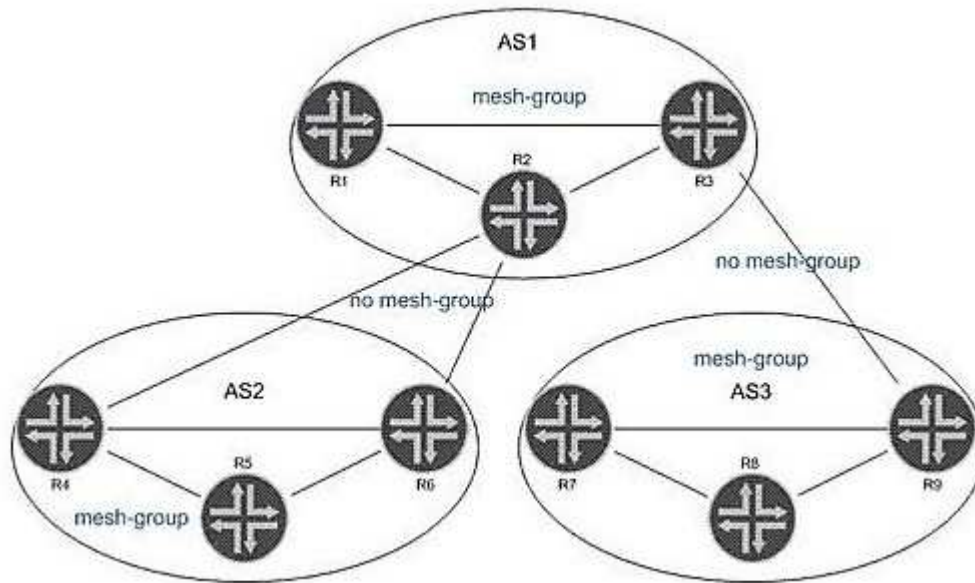
Explanation

Explanation/Reference:

Explanation:

QUESTION 49

Click the Exhibit button.



In the exhibit, all routers within each AS are configured for Anycast RP. All intra-AS routers are configured within the same MSDP mesh group. Inter-AS multicast has been enabled using MSDP without MSDP mesh groups. Which statement is true?

- A. The AS border routers allow TCP port 636 in their infrastructure ACLs.
- B. Duplicate SA messages may be received in AS2.
- C. SA messages from R5, R7, or R8 are not forwarded to AS1.
- D. Inter-AS MSDP peerings must be configured on the AS border routers.

Correct Answer: B

Section: (none)

Explanation

Explanation/Reference:

"Pass Any Exam. Any Time." - www.actualtests.com 60
Juniper JN0-660: Practice Exam

Explanation:

QUESTION 50

What does the Junos command `advertise-inactive allow`?

- A. OSPF inactive routes to be advertised using BGP
- B. inactive and hidden BGP routes to be redistributed into OSPF
- C. the best BGP route to be re-advertised by BGP, even when it is not the best route
- D. the second-best BGP route to be re-advertised by BGP, to back up the best BGP route

Correct Answer: C

Section: (none)

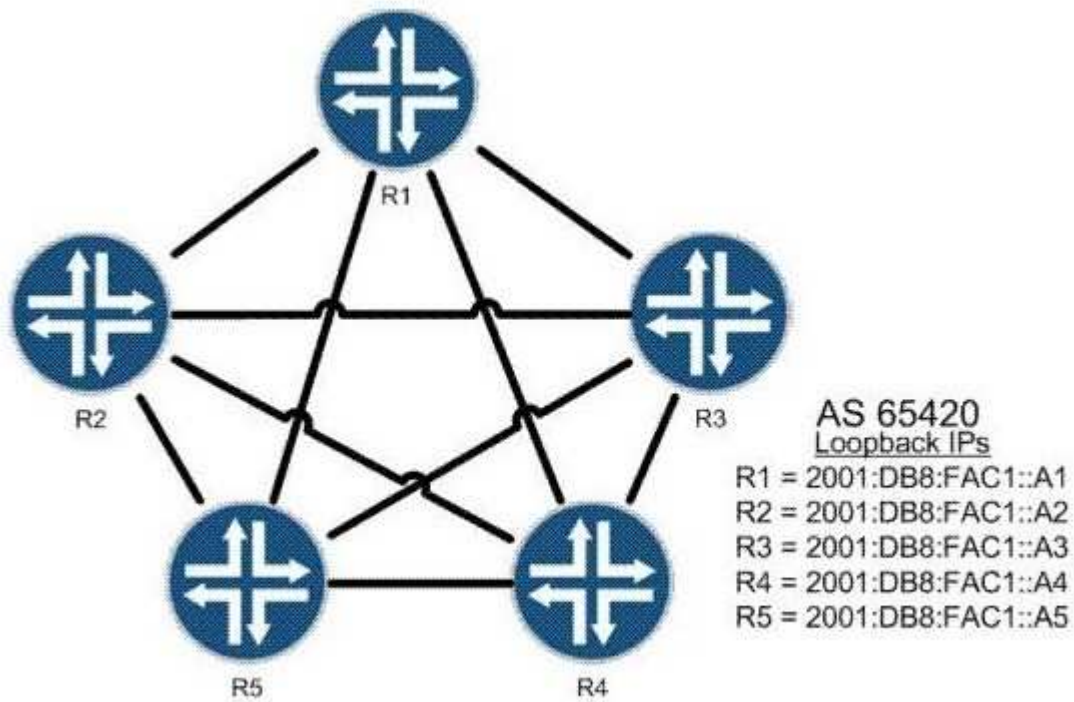
Explanation

Explanation/Reference:

Explanation:

QUESTION 51

Click the Exhibit button.



The routers shown in the exhibit are connected in a full BGP mesh. R1 is the route reflector and R2 through R5 are clients. R3 should only receive one copy of all routes sent from R4. Which configuration is valid?

"Pass Any Exam. Any Time." - www.actualtests.com 61
Juniper JN0-660: Practice Exam

C A. [edit protocols bgp]
root@R2# show
group AS65420 {
 type internal;
 local-address 2001:db8:fac1::a2;
 cluster 10.1.1.1;
 neighbor 2001:db8:fac1::a1;
 neighbor 2001:db8:fac1::a3;
 neighbor 2001:db8:fac1::a4;
 neighbor 2001:db8:fac1::a5;
}

C B. [edit protocols bgp]
root@R2# show
group AS65420 {
 type internal;
 local-address 2001:db8:fac1::a2;
 no-client-reflect;
 neighbor 2001:db8:fac1::a1;
 neighbor 2001:db8:fac1::a3;
 neighbor 2001:db8:fac1::a4;
 neighbor 2001:db8:fac1::a5;
}

C C. [edit protocols bgp]
root@R1# show
group AS65420 {
 type internal;
 local-address 2001:db8:fac1::a1;
 cluster 10.1.1.1;
 no-client-reflect;
 neighbor 2001:db8:fac1::a2;
 neighbor 2001:db8:fac1::a3;
 neighbor 2001:db8:fac1::a4;
 neighbor 2001:db8:fac1::a5;
}

C D. [edit protocols bgp]
root@R1# show
group AS65420 {
 type internal;
 local-address 2001:db8:fac1::a1;
 no-client-reflect;
 neighbor 2001:db8:fac1::a2;
 neighbor 2001:db8:fac1::a3;
 neighbor 2001:db8:fac1::a4;
 neighbor 2001:db8:fac1::a5;
}

- A. Option A
- B. Option B
- "Pass Any Exam. Any Time." - www.actualtests.com 62
Juniper JN0-660: Practice Exam
- C. Option C
- D. Option D

Correct Answer: C

Section: (none)

Explanation

Explanation/Reference:

Explanation:

QUESTION 52

Junos scripts can be written in which two languages? (Choose two.)

- A. XLS
- B. XML
- C. XSLT
- D. SLAX

Correct Answer: CD

Section: (none)

Explanation

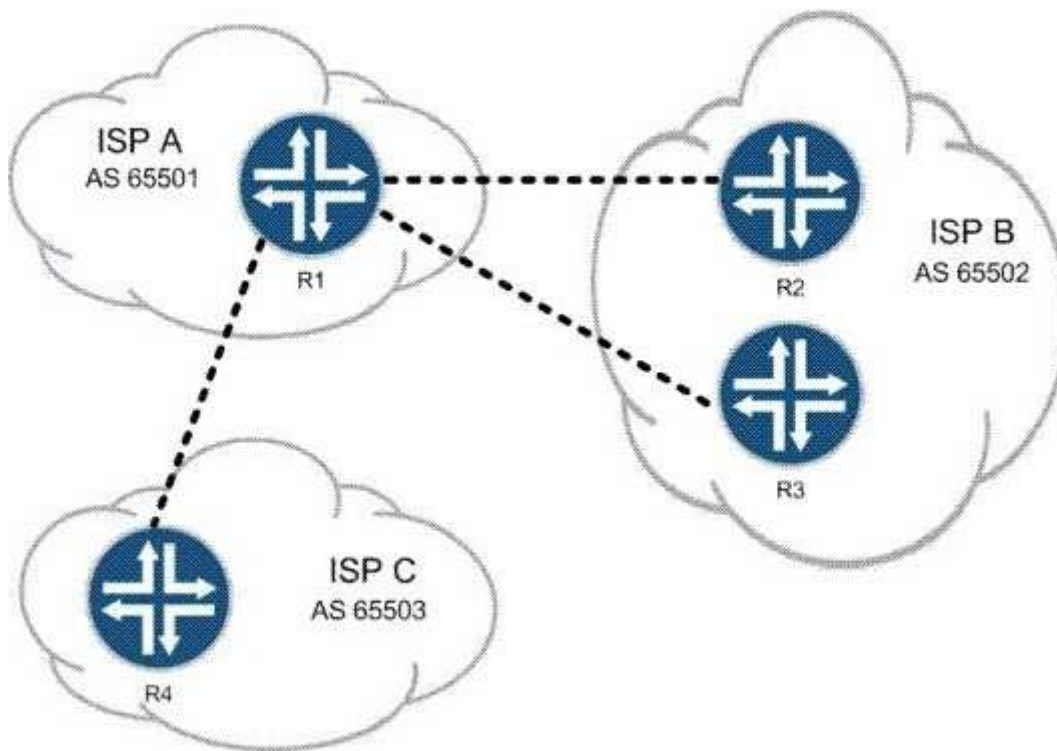
Explanation/Reference:

Explanation:

QUESTION 53

Click the Exhibit button.

"Pass Any Exam. Any Time." - www.actualtests.com 63
Juniper JN0-660: Practice Exam



You are an employee of ISP A. You must not allow traffic between ISP B and ISP C to cross your network, but customers of ISP B and ISP C must be able to reach your customers. Referring to the exhibit, which two actions would do this? (Choose two.)

- A. Use communities to identify and filter routes.
- B. Use policy to filter routes on AS number.
- C. Use origin code to identify and filter routes.
- D. Use the well-known no-advertise community.

Correct Answer: AD

Section: (none)

Explanation

Explanation/Reference:

Explanation:

QUESTION 54

Click the Exhibit button.

"Pass Any Exam. Any Time." - www.actualtests.com 64

Juniper JN0-660: Practice Exam

Customer A is complaining that CE1 and CE2 cannot form an OSPF adjacency across your LDP Layer 2 circuit. The physical topology of the network is CE1-PE1-P-PE2-CE2. PE1's loopback is 192.168.5.1, P's loopback is 192.168.6.1, and PE2's loopback is 192.168.7.1. Referring to the output in the exhibit, what is the problem?

- A. mismatched virtual circuit ID values
"Pass Any Exam. Any Time." - www.actualtests.com 65
Juniper JN0-660: Practice Exam
- B. mismatched interface encapsulations

- C. incorrect PE-CE interface configuration
- D. extended LDP neighbor not established

Correct Answer: A

Section: (none)

Explanation

Explanation/Reference:

Explanation:

QUESTION 55

You are a network administrator in charge of configuring CoS for your network. Your network includes a voice application with strict latency requirements, so that any packets delayed by more than 75 ms are effectively useless. When configuring the scheduler for this application, which feature ensures that you do not waste buffer space?

- A. rate-limit
- B. adaptive
- C. latency-limit
- D. temporal

Correct Answer: D

Section: (none)

Explanation

Explanation/Reference:

Explanation:



<http://www.gratisexam.com/>

QUESTION 56

You are asked to design a Layer 2 VPN service between service provider networks that needs Ethernet transport capabilities. The VPN should support two or three endpoints. Which Layer 2 VPN technology should you propose?

- A. LDP-signaled VPLS
- B. BGP-signaled VPLS, using the RFC 4448 Layer 2 frame format
- C. LDP Layer 2 circuit, using the RFC 4448 Layer 2 frame format
- D. BGP Layer 2 VPN

Correct Answer: B

Section: (none)

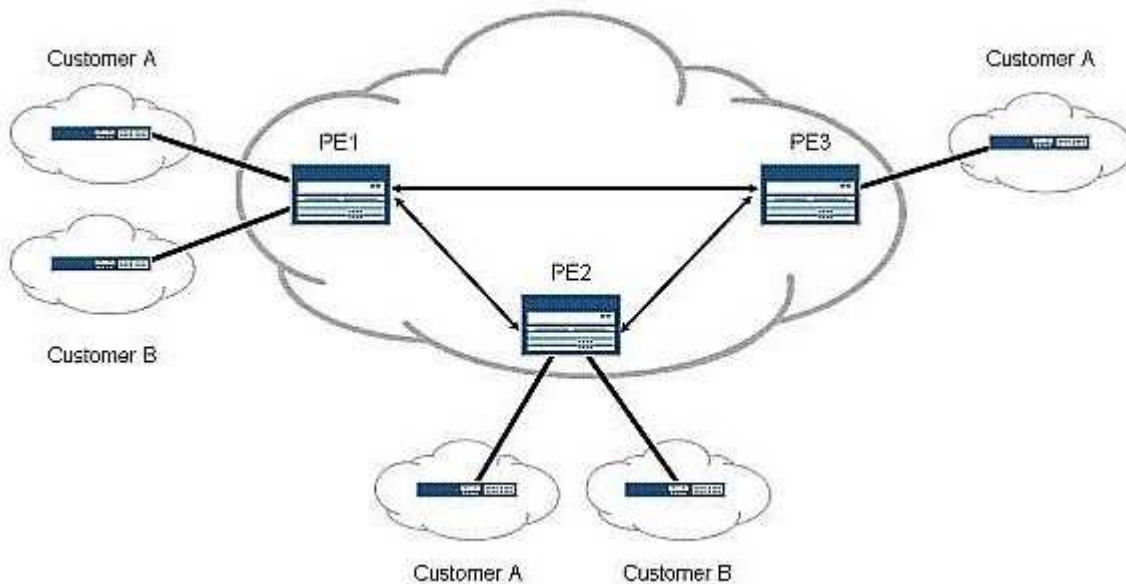
Explanation

Explanation/Reference:

Explanation:

QUESTION 57

Click the Exhibit button.



Given the existing operational network shown in the exhibit, you now want to add a remote site for Customer B to the PE3 router. This change should not have an effect on the existing BGP sessions between the PE routers. Which Layer 3 VPN scaling mechanism allows PE3 to begin receiving Customer B routes?

- A. route origin
- B. route refresh
- C. route reflection
- D. route target filtering

Correct Answer: B

Section: (none)

Explanation

Explanation/Reference:

Explanation:

QUESTION 58

Click the Exhibit button.

```
[edit]
user@host# show class-of-service
schedulers {
    voice {
        transmit-rate percent 40;
        priority strict-high;
    }
    critical {
        transmit-rate percent 25;
        priority high;
    }
    less-critical {
        transmit-rate percent 15;
        priority medium-high;
    }
    data {
        transmit-rate percent 10;
        priority medium-low;
    }
    left-over {
        transmit-rate percent 5;
        priority low;
    }
}
```

On your MX Series router, traffic using the critical scheduler is out of profile. All other data is currently in profile. Referring to the exhibit, which statement is correct?

- A. The critical queue is serviced before the less-critical queue.
- B. The critical queue is serviced after the left-over queue.
- C. The critical queue is serviced before the data queue.
- D. The critical queue is serviced before the voice queue.

Correct Answer: B

Section: (none)

Explanation

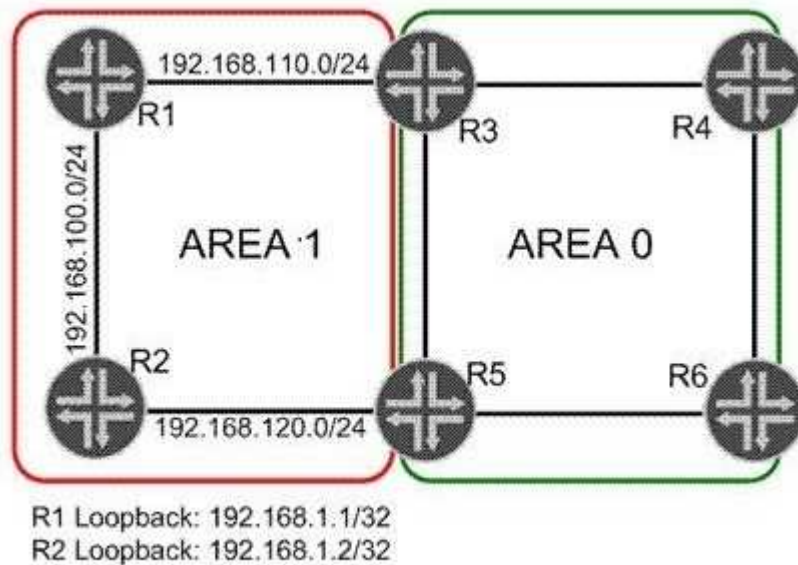
Explanation/Reference:

Explanation:

QUESTION 59

Click the Exhibit button.

"Pass Any Exam. Any Time." - www.actualtests.com 70
Juniper JN0-660: Practice Exam



Area 1 has three network links. You need to summarize the network addresses in Area 1 so that Area 0 sees one route representing the network links. A route to each loopback address must still be visible in Area 0. Which configuration sample on R3 and R5 will complete this task?

"Pass Any Exam. Any Time." - www.actualtests.com 71
Juniper JN0-660: Practice Exam

- A. Option A
- B. Option B
- C. Option C
- D. Option D

Correct Answer: B

Section: (none)

Explanation

Explanation/Reference:

Explanation:

"Pass Any Exam. Any Time." - www.actualtests.com 72
Juniper JN0-660: Practice Exam

QUESTION 60

Click the Exhibit button.

```

[edit class-of-service]
user@router# show
classifiers {
    dscp classifierA {
        forwarding-class low-priority {
            loss-priority low code-points 000000;
            loss-priority high code-points 000001;
        }
        forwarding-class medium-priority {
            loss-priority low code-points 000010;
            loss-priority high code-points 000011;
        }
        forwarding-class high-priority {
            loss-priority low code-points 000100;
            loss-priority high code-points 000101;
        }
    }
}

...

forwarding-classes {
    class low-priority queue-num 0;
    class medium-priority queue-num 1;
    class high-priority queue-num 2;
    class NC queue-num 3;
}
interfaces {
    ge-1/0/4 {
        unit 0 {
            classifiers {
                dscp classifierA;
            }
        }
    }
    ge-1/0/5 {
        scheduler-map sched-mapA;
    }
}

...

scheduler-maps {
    sched-mapA {
        forwarding-class low-priority scheduler low-pri-scheduler;
        forwarding-class medium-priority scheduler med-pri-scheduler;
        forwarding-class high-priority scheduler high-pri-scheduler;
        forwarding-class NC scheduler NC-scheduler;
    }
}
schedulers {
    low-pri-scheduler {
        transmit-rate 100m exact;
        buffer-size percent 30;
        priority low;
    }
    med-pri-scheduler {
        transmit-rate percent 10;
        buffer-size percent 10;
        priority medium-high;
    }
    high-pri-scheduler {
        transmit-rate 100m rate-limit;
        buffer-size percent 20;
        priority high;
    }
}

```

"Pass Any Exam. Any Time." - www.actualtests.com 73

Juniper JN0-660: Practice Exam

You manage an MX series router (with 100 ms buffer size per port) that includes the configuration shown in the exhibit. Traffic marked with DSCP 000101 is entering the ge-1/0/4 interface at 102 Mbps. The traffic exits the device on the ge-1/0/5 interface. There is no other traffic transiting the router. What happens to traffic exceeding 100 Mbps?

- A. Traffic exceeding 100 Mbps is forwarded.
- B. Traffic exceeding 100 Mbps is buffered.
- C. Traffic exceeding 100 Mbps is redirected to a rate limiter.
- D. Traffic exceeding 100 Mbps is dropped.

Correct Answer: D

Section: (none)

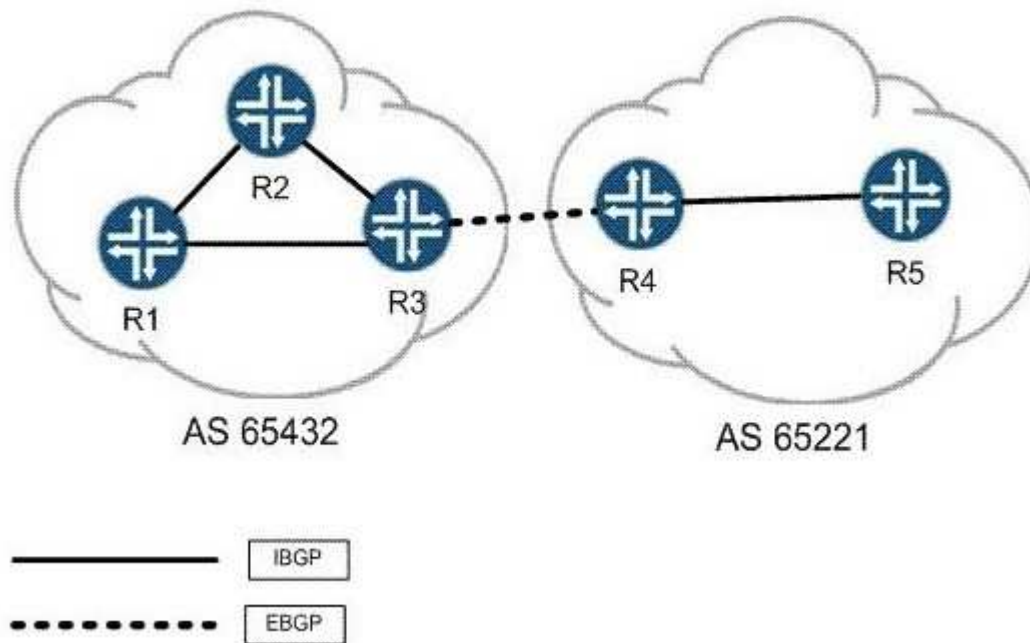
Explanation

Explanation/Reference:

Explanation:

QUESTION 61

Click the Exhibit button.



R3 and R4 want to establish an EBGP session between each other's loopback addresses. Static routes have been configured for the loopback addresses and you can ping from loopback to loopback. Their EBGP sessions are configured with multihop to allow for additional hops. The correct AS numbers have been specified at the [routing-options] hierarchy as well. Considering the topology in the exhibit, which statement is true?

- A. BGP's protocol preference must be adjusted to be lower than protocol static for the session to establish.
- B. Each peer must configure a local-address of their own loopback for the session to establish.

"Pass Any Exam. Any Time." - www.actualtests.com 74

Juniper JN0-660: Practice Exam

- C. Each peer must specify a local-as within their EBGP configuration for the session to establish.

D. Each peer must configure multipath for the session to establish.

Correct Answer: B

Section: (none)

Explanation

Explanation/Reference:

Explanation:

QUESTION 62

You are evaluating a routing policy for an ISP and you find the `^42+ .* (23|9)$` regular expression. Which three AS paths match the regular expression? (Choose three.)

- A. 42 42 42 42 9
- B. 42 42 23 500
- C. 42 42 42 60 9
- D. 42 60 23 9 42
- E. 42 69 500 23

Correct Answer: ACE

Section: (none)

Explanation

Explanation/Reference:

Explanation:

QUESTION 63

Click the Exhibit button.

"Pass Any Exam. Any Time." - www.actualtests.com 75

Juniper JN0-660: Practice Exam

192.168.56.1

```
From: 192.168.56.5, LSPstate: Up, ActiveRoute: 0
LSPname: to-r6, LSPpath: Primary
LSFtype: Static Configured
Suggested label received: -, Suggested label sent: -
Recovery label received: -, Recovery label sent: 3
Resv style: 1 FF, Label in: -, Label out: 3
Time left: -, Since: Tue Feb 22 21:38:36 2011
Tspec: rate 0bps size 0bps peak Infbps m 20 M 1500
Port number: sender 1 receiver 18916 protocol 0
FastReroute desired
PATH rcvfrom: localclient
Adspec: sent MTU 1500
Path MTU: received 1500
PATH sentto: 10.10.56.1 (ge-1/0/1.0) 7 pkts
RESV rcvfrom: 10.10.56.1 (ge-1/0/1.0) 5 pkts
Explct route: 10.10.56.1
Record route: <self> 10.10.56.1
Detour is Up
Detour Tspec: rate 0bps size 0bps peak Infbps m 20 M 1500
Detour adspec: sent MTU 1500
Path MTU: received 1500
Detour PATH sentto: 10.10.10.9 (ge-1/0/2.0) 4 pkts
Detour RESV rcvfrom: 10.10.10.9 (ge-1/0/2.0) 3 pkts
Detour Explct route: 10.10.10.9 10.10.10.6
Detour Record route: <self> 10.10.10.9 10.10.10.6
Detour Label out: 299856
```

Referring to the exhibit, which type of traffic protection mechanism is used for the LSP?

- A. link-protection
- B. fast-reroute
- C. node-link-protection
- D. bypass

Correct Answer: B

Section: (none)

Explanation

Explanation/Reference:

Explanation:

QUESTION 64

Click the Exhibit button.

"Pass Any Exam. Any Time." - www.actualtests.com 76

Juniper JN0-660: Practice Exam

```

[edit]
jorg@pe1# show routing-instances mcast-pe-vrf
instance-type vrf;
interface ge-1/0/9.101;
interface lo0.1;
provider-tunnel {
    rsvp-te {
        label-switched-path template {
            mvpn-example;
        }
    }
}
protocols {
    ..
    pim {
        rp {
            local {
                address 192.168.13.3;
            }
        }
        interfaces all {
            mode sparse;
        }
    }
    mvpn {
        mvpn-mode {
            spt-only;
        }
    }
    ..

```

A customer has the configuration shown in the exhibit applied to the VRF C-PIM domain. What can you determine from this configuration?

- A. The PE is configured for selective PMSI (S-PMSI) only.
- B. The C-RP is collocated on one of the PEs in the MVPN.
- C. The MVPN is not working because the receiver-site command is missing.
- D. Multicast traffic will not switch to the S-PMSI because the vpn-group-address command (data MDT) is missing.

Correct Answer: B

Section: (none)

Explanation

Explanation/Reference:

Explanation:

"Pass Any Exam. Any Time." - www.actualtests.com 77
 Juniper JN0-660: Practice Exam

QUESTION 65

The network design team has decided to activate multicast in the network. Auto-RP has been selected as the RP mechanism. Which PIM operational mode must be enabled in this network?

- A. sparse mode
- B. sparse-dense mode
- C. dense mode
- D. source specific multicast

Correct Answer: B

Section: (none)

Explanation

Explanation/Reference:

Explanation:

QUESTION 66

Click the Exhibit button.

```
My_VPLS2 {  
    instance-type vpls;  
    interface ge-1/0/1.0;  
    protocols {  
        vpls {  
            no-tunnel-services;  
            vpls-id 100;  
            neighbor 192.168.1.1;  
        }  
    }  
}
```

Referring to the exhibit, which two statements are true? (Choose two.)

- A. The VPN uses LDP signaling for VPLS services.
- B. The VPN uses BGP signaling for VPLS services.
- C. The PE and directly attached CE are multihomed.
- D. There are only 2 PEs with VPN membership in the network.

Correct Answer: AD

Section: (none)

Explanation

Explanation/Reference:

Explanation:

QUESTION 67

Click the Exhibit button.

"Pass Any Exam. Any Time." - www.actualtests.com 82
Juniper JN0-660: Practice Exam

```

user@host> show pim join extensive
Instance: PIM.master Family: INET
R = Rendezvous Point Tree, S = Sparse, W = Wildcard

Group: 239.1.1.1
  Source: *
  RP: 10.255.14.144
  Flags: sparse,rptree,wildcard
  Upstream interface: Local
  Upstream neighbor: Local
  Upstream state: Local RP
  Downstream neighbors:
    Interface: so-1/0/0.0
      10.111.10.2 State: Join Flags: SRW Timeout: 174
    Interface: mt-1/1/0.32768
      10.10.47.100 State: Join Flags: SRW Timeout: Infinity

Group: 239.1.1.1
  Source: 10.255.14.144
  Flags: sparse,spt
  Upstream interface: Local
  Upstream neighbor: Local
  Upstream state: Local Source, Local RP
  Keepalive timeout: 344
  Downstream neighbors:
    Interface: so-1/0/0.0
      10.111.10.2 State: Join Flags: S Timeout: 174
    Interface: mt-1/1/0.32768
      10.10.47.100 State: Join Flags: S Timeout: Infinity

Group: 239.1.1.1
  Source: 10.255.70.15
  Flags: sparse,spt
  Upstream interface: so-1/0/0.0
  Upstream neighbor: 10.111.10.2
  Upstream state: Local RP, Join to Source
  Keepalive timeout: 344
  Downstream neighbors:
    Interface: Pseudo-GMP
      fe-0/0/0.0 fe-0/0/1.0 fe-0/0/3.0
    Interface: so-1/0/0.0 (pruned)
      10.111.10.2 State: Prune Flags: SR Timeout: 174
    Interface: mt-1/1/0.32768
      10.10.47.100 State: Join Flags: S Timeout: Infinity

```

Given the output in the exhibit, which three statements are correct? (Choose three.)

- A. PIM sparse-dense mode is used.
- B. PIM sparse mode is used.
- C. The receiver and source 10.255.70.15 are on the shortest path tree.

- D. The receiver and source 10.255.70.15 are on the shared tree.
- E. The receiver and RP are on the shortest path tree.

Correct Answer: BCE

Section: (none)

Explanation

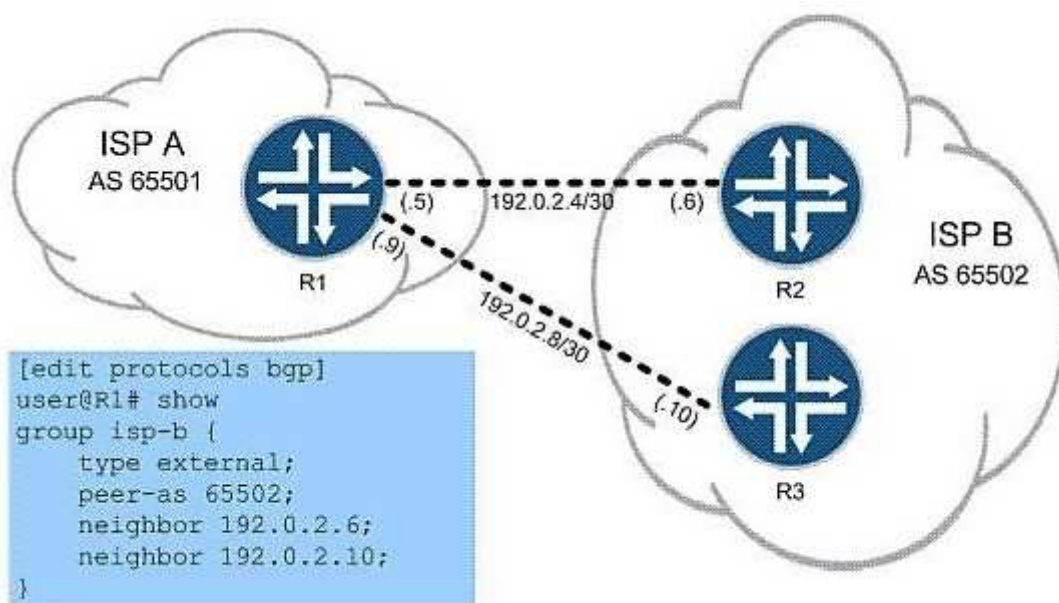
Explanation/Reference:

Explanation:

"Pass Any Exam. Any Time." - www.actualtests.com 83
Juniper JN0-660: Practice Exam

QUESTION 68

Click the Exhibit button.



Referring to the exhibit, you work for ISP A and are asked to configure R1 to forward traffic for all routes across both available links, to both routers in ISP B's network. Which three configuration commands do you use? (Choose three.)

- A. set protocols bgp group isp-b multipath
- B. set policy-options policy-statement load-balance then load-balance per-packet
- C. set routing-options forwarding-table import load-balance
- D. set protocols bgp group isp-b multipath
- E. set routing-options forwarding-table export load-balance

Correct Answer: BDE

Section: (none)

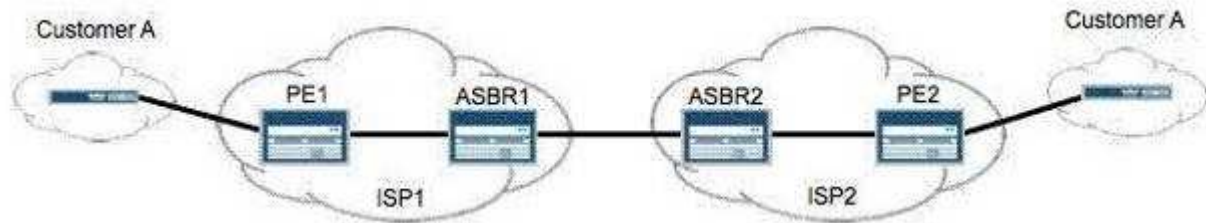
Explanation

Explanation/Reference:

Explanation:

QUESTION 69

Click the Exhibit button.



"Pass Any Exam. Any Time." - www.actualtests.com 84

Juniper JN0-660: Practice Exam

You are building an interprovider VPN with ISP2 to support end-to-end connectivity for Customer A, as shown in the exhibit. For scalability reasons, the ASBR routers cannot exchange VPN routes for Customer A. Which two configurations are needed to support this requirement? (Choose two.)

- A. family inet-vpn on the ASBRs
- B. labeled-unicast on the ASBRs
- C. multihop EBGP between the PEs
- D. one VRF on the ASBRs for Customer A

Correct Answer: BC

Section: (none)

Explanation

Explanation/Reference:

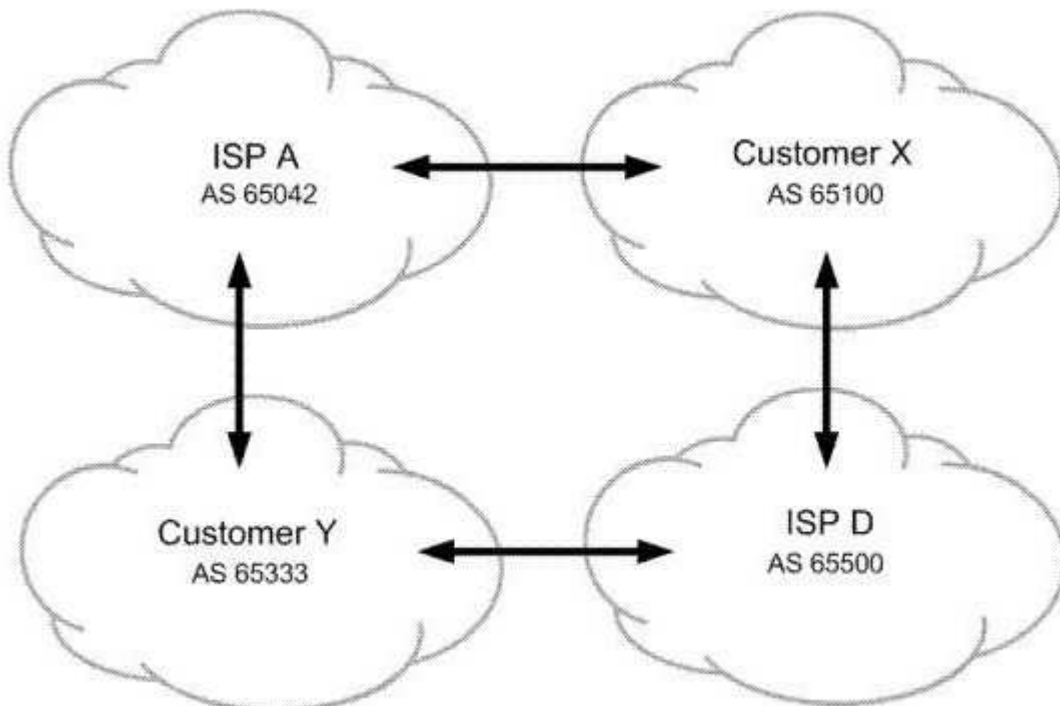
Explanation:

QUESTION 70

Click the Exhibit button.

"Pass Any Exam. Any Time." - www.actualtests.com 85

Juniper JN0-660: Practice Exam



All ISP networks shown in the exhibit contain many BGP speaking routers. You are in charge of ISP A. You must ensure that customer Y sends their traffic to you over the directly connected link but customer Y is not used for transit into your network. What do you do to accomplish this?

- A. Advertise routes to customer Y with a higher MED than routes advertised to customer X.
- B. Advertise routes to customer Y with the well-known no-advertise community.
- C. Advertise routes to customer Y with your AS number prepended four times.
- D. Advertise routes to customer Y with the well-known no-export community.

Correct Answer: D

Section: (none)

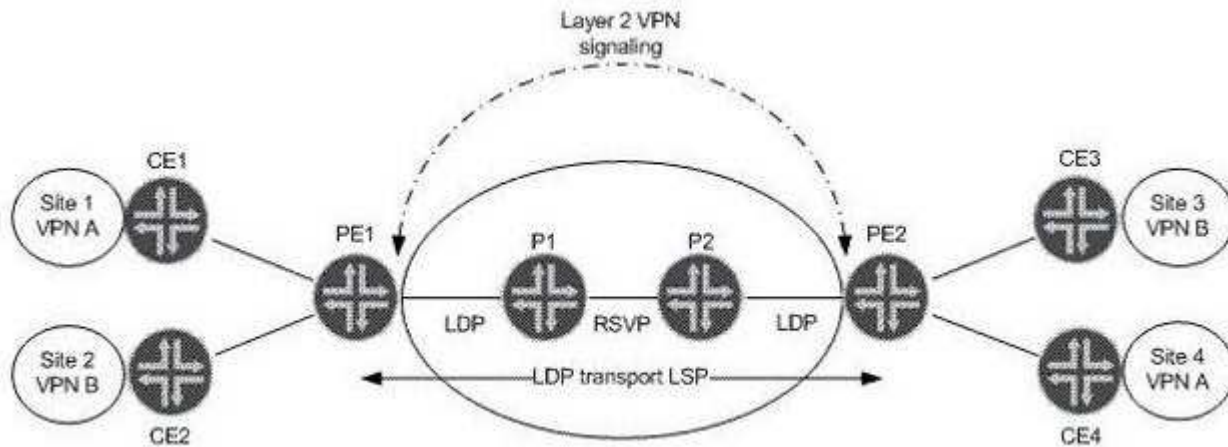
Explanation

Explanation/Reference:

Explanation:

QUESTION 71

Click the Exhibit button.



"Pass Any Exam. Any Time." - www.actualtests.com 86

Juniper JN0-660: Practice Exam

Referring to the exhibit, which statement is true assuming BGP Layer 2 VPN signaling?

- A. PE1 receives two BGP NLRI updates, each containing a remote site ID, a label base, and Layer 2 encapsulation.
- B. PE2 receives one BGP NLRI update containing a remote site ID, a label base, and Layer 2 encapsulation.
- C. PE2 receives two BGP NLRI updates, each containing a remote site ID, label vc, and Layer 2 encapsulation.
- D. PE1 receives one BGP NLRI for VPN A containing only a remote site ID and a label offset value.

Correct Answer: A

Section: (none)

Explanation

Explanation/Reference:

Explanation:

QUESTION 72

You are asked to design a Layer 2 VPN service for a service provider network that supports Ethernet and ATM transport. Which two Layer 2 VPN technologies will meet this requirement? (Choose two.)

- A. LDP-signaled VPLS, using draft martini encapsulation
- B. BGP-signaled VPLS, using the RFC 4448 Layer 2 frame format
- C. LDP Layer 2 circuit, using the RFC 4448 Layer 2 frame format
- D. BGP Layer 2 VPN, using draft-Martini encapsulation

Correct Answer: CD

Section: (none)

Explanation

Explanation/Reference:

Explanation:

QUESTION 73

An LDP Layer 2 circuit is configured for VPN A and VPN B. Which three statements are true regarding LDP Layer 2 circuit signaling? (Choose three.)

- A. PE-P LDP sessions use Martini encapsulation.
- B. PE-PE LDP sessions can be extended or adjacent.
- C. VRF tables are needed on the PEs.
- D. TCC encapsulation is needed to interconnect different interface types.
- E. The VC type field in the LDP header specifies the encapsulation type.

Correct Answer: BDE

Section: (none)

Explanation

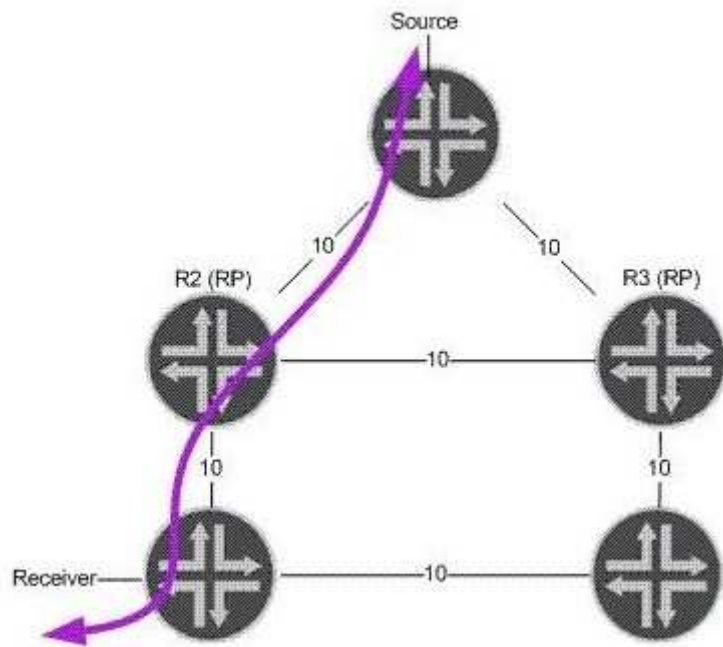
Explanation/Reference:

Explanation:

"Pass Any Exam. Any Time." - www.actualtests.com 87
Juniper JN0-660: Practice Exam

QUESTION 74

Click the Exhibit button.



In the exhibit, R2 and R3 are both rendezvous points. Assume that R2 fails. Which RP redundancy method could converge the multicast stream and RP as quickly as the IGP?

"Pass Any Exam. Any Time." - www.actualtests.com 88
Juniper JN0-660: Practice Exam

- A. BSR without the use of MSDP
- B. Anycast RP and MSDP
- C. Auto-RP in combination with MSDP
- D. Auto-RP without using MSDP

Correct Answer: B

Section: (none)

Explanation

Explanation/Reference:

Explanation:

QUESTION 75

Which two statements are true when configuring OSPF authentication? (Choose two.)

- A. An OSPF link can support both simple password and MD5 authentication at the same time.
- B. An MD5 password requires a key ID.
- C. You can configure multiple MD5 passwords simultaneously on the same link.
- D. If the MD5 password negotiation fails, you can configure OSPF to automatically use a simple password as a backup.

Correct Answer: BC

Section: (none)

Explanation

Explanation/Reference:

Explanation:

QUESTION 76

Which three statements are true about the BGP community attribute? (Choose three.)

- A. There are three well-known communities.
- B. Communities can be used to signal local preference in other AS networks.
- C. Only well-known communities can be passed between AS networks.
- D. Routing policies can be simplified using BGP communities.
- E. Communities are used in the route selection process.

Correct Answer: ABD

Section: (none)

Explanation

Explanation/Reference:

Explanation:

QUESTION 77

An IS-IS level 1-only router is configured within a larger multilevel hierarchy. Which OSPF area type resembles the routing information in the L1 router's table?

- A. OSPF default area
- B. OSPF stub area
"Pass Any Exam. Any Time." - www.actualtests.com 89
Juniper JN0-660: Practice Exam
- C. OSPF NSSA
- D. OSPF NSSA with no summaries

Correct Answer: D

Section: (none)

Explanation

Explanation/Reference:

Explanation:

QUESTION 78

Click the Exhibit button.

```
BGP RECV 192.168.56.1+179 -> 192.168.56.5+49444
BGP RECV message type 4 (KeepAlive) length 19

BGP RECV 192.168.56.1+179 -> 192.168.56.5+49444
BGP RECV message type 2 (Update) length 54
BGP RECV Update PDU length 54
BGP RECV flags 0x40 code Origin(1): IGP
BGP RECV flags 0x40 code ASPath(2) length 0: <null>
BGP RECV flags 0x40 code NextHop(3): 192.168.56.1
BGP RECV flags 0x40 code LocalPref(5): 100
BGP RECV          10.10.56.0/30 , 192.168.56.1/32
```

The exhibit contains a sample trace file of a BGP update message. Which two statements are true? (Choose two.)

- A. 10.10.56.0/30 is a route internal to the AS.
- B. The router that sent this update is the BGP originator of 10.10.56.0/30.
- C. The BGP session is EBGP.
- D. The local preference has been changed from the default settings.

Correct Answer: AD

Section: (none)

Explanation

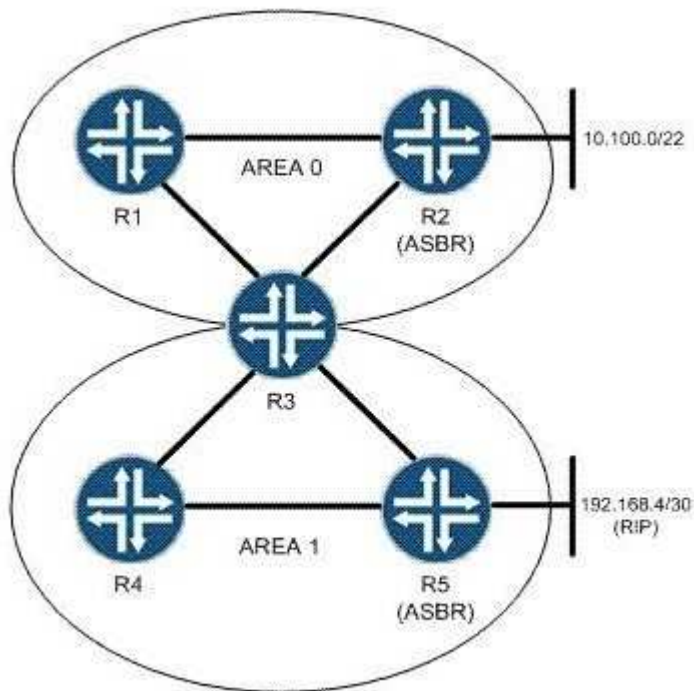
Explanation/Reference:

Explanation:

QUESTION 79

Click the Exhibit button.

"Pass Any Exam. Any Time." - www.actualtests.com 91
Juniper JN0-660: Practice Exam



You are asked to configure an OSPF network based on the topology shown in the exhibit. Area 1 must not receive Type 5 LSAs from the backbone, but must be capable of containing ASBRs. What will accomplish this?

- A. Area 1 should be configured as a stub area, which by default meets the network's requirements.
- B. R3 should be configured with no-externals for Area 1, which will suppress Type 5 announcements.
- C. R3 should be configured with no-summaries for Area 1, which will suppress Type 5 announcements.
- D. Area 1 should be configured as an NSSA, which by default meets the network's requirements.

Correct Answer: D

Section: (none)

Explanation

Explanation/Reference:

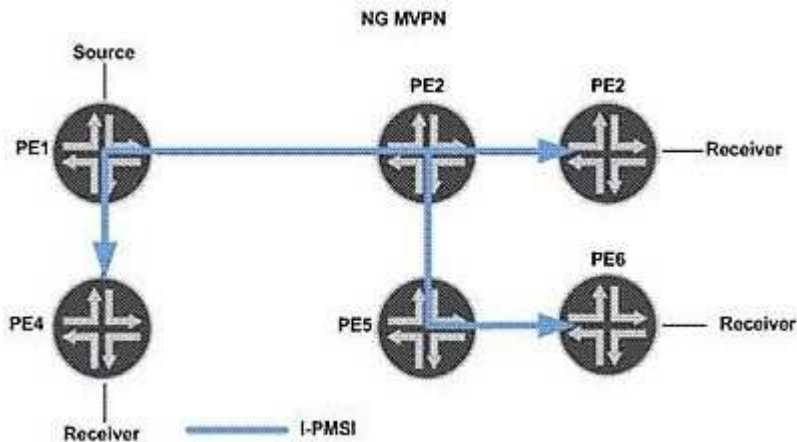
Explanation:

QUESTION 80

Click the Exhibit button.

"Pass Any Exam. Any Time." - www.actualtests.com 92

Juniper JN0-660: Practice Exam



In the exhibit, NG-MVPN is used for a Layer 3 VPN. Which two statements are valid? (Choose two.)

- A. The egress PEs for I-PMSI tunnels should signal a label value of 3.
- B. The vrf-table-label parameter is configured on the PEs.
- C. PIM must be enabled on the PE and P routers.
- D. The provider tunnel shown is similar to a draft-Rosen default MDT.

Correct Answer: BD

Section: (none)

Explanation

Explanation/Reference:

Explanation:

QUESTION 81

Click the Exhibit button.

"Pass Any Exam. Any Time." - www.actualtests.com 93

Juniper JN0-660: Practice Exam

```

[edit protocols mpls]
user@router# show
label-switched-path to-egress {
    to 172.40.100.10;
    secondary path-one;
    secondary path-three;
    secondary path-two;
}
path path-one {
    172.20.100.1;
}
path path-two {
    172.20.100.5;
}
path path-three {
    172.20.100.5;
}
interface all;
interface fxp0.0 {
    disable;
}

```

Based on the configuration in the exhibit, which statement is correct?

- A. If path-one fails, the LSP will attempt to signal a new LSP using path-three.
- B. If path-one fails, the LSP will attempt to signal a new LSP using path-two.
- C. If path-one fails, the LSP will not attempt to signal a new LSP.
- D. If path-one fails, the LSP will attempt to signal a new LSP using both path-two and path-three.

Correct Answer: A

Section: (none)

Explanation

Explanation/Reference:

Explanation:

QUESTION 82

You are monitoring the control plane traffic using a network analyzer on an Ethernet network segment with all routers configured with IS-IS routing. Which two statements are true? (Choose two.)

- A. DIS will send hellos more frequently than other IS-IS devices.
- B. L1 and L2 hellos are combined in a single hello packet.
- C. PSNPs are sent periodically.
- D. Only the DIS will send CSNPs periodically.

"Pass Any Exam. Any Time." - www.actualtests.com 94
Juniper JN0-660: Practice Exam

Correct Answer: AD

Section: (none)

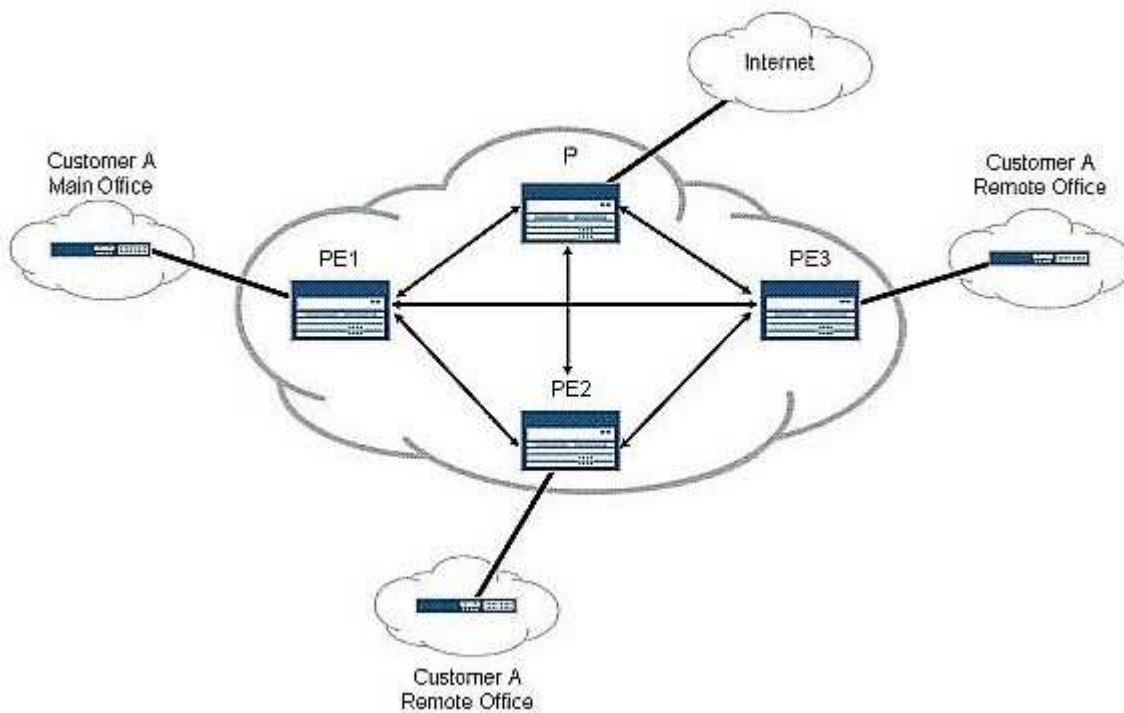
Explanation

Explanation/Reference:

Explanation:

QUESTION 83

Click the Exhibit button.



In the exhibit, Customer A uses private RFC1918 addresses within its network. The customer wants to have all Internet access for its organization transit through the main office for security and NAT purposes. Each of the PE routers in your network contains Internet routes in the main instance routing table and is capable of provisioning both a VRF and a non-VRF interface to its attached CE router. Which router should be configured to accomplish the administrative goal of the customer?

- A. P
- B. PE1
- C. PE2
- D. PE3

Correct Answer: B

Section: (none)

Explanation

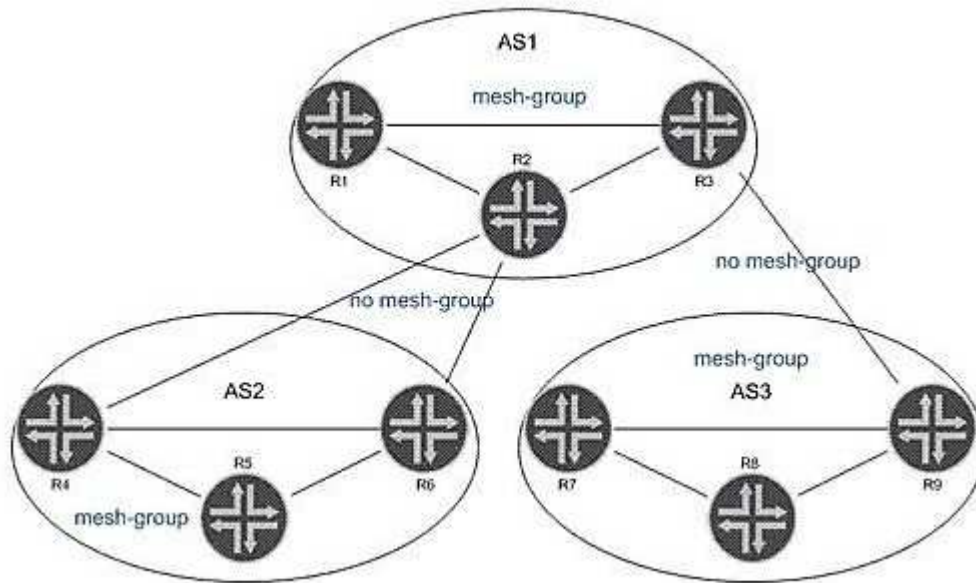
Explanation/Reference:

Explanation:

"Pass Any Exam. Any Time." - www.actualtests.com 95
Juniper JN0-660: Practice Exam

QUESTION 84

Click the Exhibit button.



In the exhibit, all routers within each AS are configured for Anycast RP. All intra-AS routers are configured within the same MSDP mesh group. Inter-AS multicast has been enabled using MSDP without MSDP mesh groups. Which statement is true?

- A. R6 and R7 should have an MSDP peering, because multiple MSDP AS hops are not allowed.
- B. SA messages received from R2 are not forwarded to R5, R7, and R8.
- C. SA messages from R5 are not forwarded to AS1.
- D. Duplicate SA messages may be received in AS2.

Correct Answer: D

Section: (none)

Explanation

Explanation/Reference:

Explanation:

QUESTION 85

Click the Exhibit button.

```

[edit]
user@host# show class-of-service
schedulers {
    voice {
        transmit-rate percent 40;
        priority strict-high;
    }
    critical {
        transmit-rate percent 25;
        priority high;
    }
    less-critical {
        transmit-rate percent 15;
        priority medium-high;
    }
    data {
        transmit-rate percent 10;
        priority medium-low;
    }
    left-over {
        transmit-rate percent 5;
        priority low;
    }
}

```

On your MX Series router, traffic using the less-critical scheduler is out of profile. All other data is currently in profile. Referring to the exhibit, which statement is correct?

- A. The less-critical queue can use the remaining bandwidth.
- B. The less-critical queue cannot buffer traffic, so traffic is dropped.
- C. The less-critical queue is serviced before the critical queue.
- D. The less-critical queue cannot use the remaining bandwidth.

Correct Answer: A

Section: (none)

Explanation

Explanation/Reference:

Explanation:

QUESTION 86

Click the Exhibit button.

"Pass Any Exam. Any Time." - www.actualtests.com 98
 Juniper JN0-660: Practice Exam

```
[edit firewall three-color-policer policerA]
user@router# show
two-rate {
    color-aware;
    committed-information-rate 1m;
    committed-burst-size 500k;
    peak-information-rate 5m;
    peak-burst-size 1m;
}
```

Traffic is flowing through the policer as shown in the exhibit. The traffic has a throughput rate of 3 Mbps, and the burst size counter is at 1.5 MB. How is traffic affected?

- A. Traffic has its PLP set to low.
- B. Traffic has its PLP set to medium-low.
- C. Traffic has its PLP set to medium-high.
- D. Traffic has its PLP set to high.

Correct Answer: C

Section: (none)

Explanation

Explanation/Reference:

Explanation:

QUESTION 87

Which two configuration parameters are required to configure an LDP-signaled VPLS service? (Choose two.)

- A. vpls-id
- B. site-identifier
- C. route-distinguisher
- D. instance-type vpls

Correct Answer: AD

Section: (none)

Explanation

Explanation/Reference:

Explanation:

QUESTION 88

Click the Exhibit button.

"Pass Any Exam. Any Time." - www.actualtests.com 99
Juniper JN0-660: Practice Exam



As shown in the exhibit, you have an LSP established from R1 to R4. Your network experiences a link failure

between R2 and R3.Which statement is correct?

- A. A ResvTear message is sent toward the egress router.
- B. A ResvConf message is sent toward the ingress router.
- C. A PathErr message is sent toward the egress router.
- D. A ResvTear message is sent toward the ingress router.

Correct Answer: D

Section: (none)

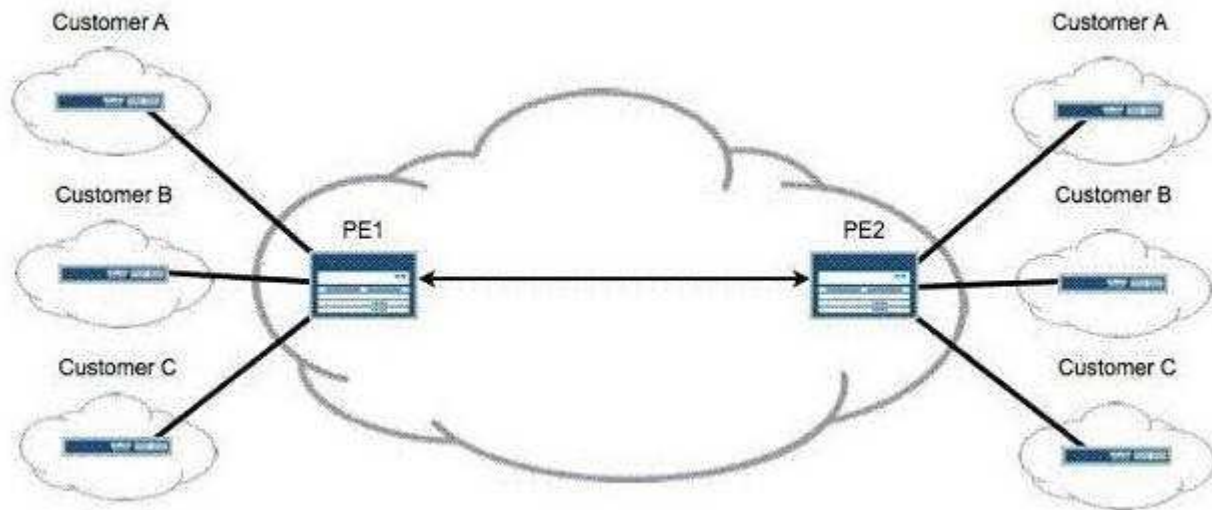
Explanation

Explanation/Reference:

Explanation:

QUESTION 89

Click the Exhibit button.



After adding Customer C to your Layer 3 VPN, you must validate that PE2 is receiving VPN routes for all customers attached to PE1, as shown in the exhibit.Which operational command displays this information?

- A. show route instance
- B. show route summary
- C. show route table bgp.l3vpn.0
- D. show route table customer-c.inet.0

Correct Answer: C

Section: (none)

Explanation

Explanation/Reference:

Explanation:

QUESTION 90

You are adding nonforwarding route reflectors to your network.Which three actions ensure that VPN routes are advertised properly? (Choose three.)

- A. Use rib-groups to add IGP routes to inet.3 and/or inet6.3 on the route reflectors.
- B. Add MPLS LSPs between the route reflectors and their client routers.
- C. Add the route reflectors to the same IGP domain as their clients.
- D. Use rib-groups to add VPN routes to inet.0 and/or inet6.0 on the route reflectors.
- E. Add a static default route to inet.3 and/or inet6.3 on the route reflectors.

Correct Answer: ABE

Section: (none)

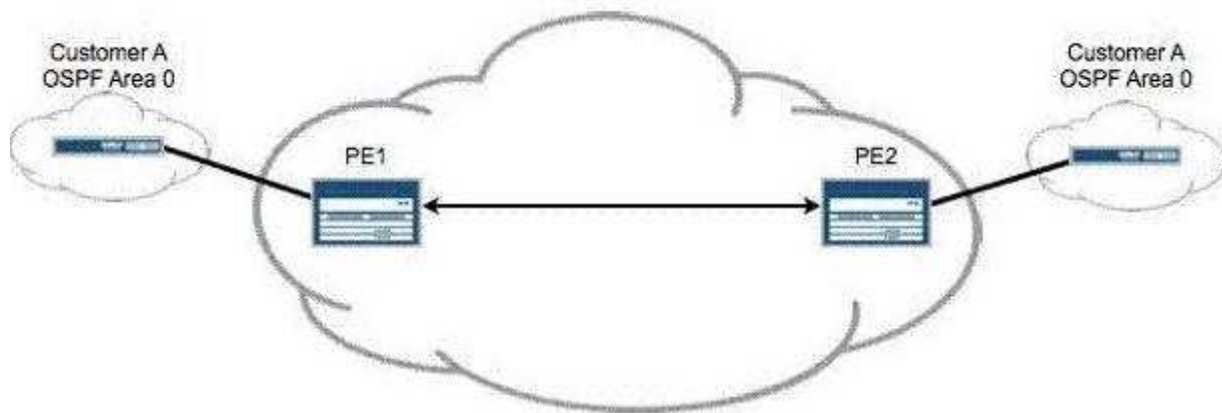
Explanation

Explanation/Reference:

Explanation:

QUESTION 91

Click the Exhibit button.



Referring to the exhibit, Customer A is complaining that no OSPF routes are being received across your Layer 3 VPN. You suspect that a problem exists with the PE-CE protocol. The core network is operational. Which operational command on PE1 helps troubleshoot this problem?

- A. show ospf neighbor
- B. show bgp summary
- C. show ospf neighbor instance customer-a
- D. show bgp summary instance customer-a

Correct Answer: C

Section: (none)

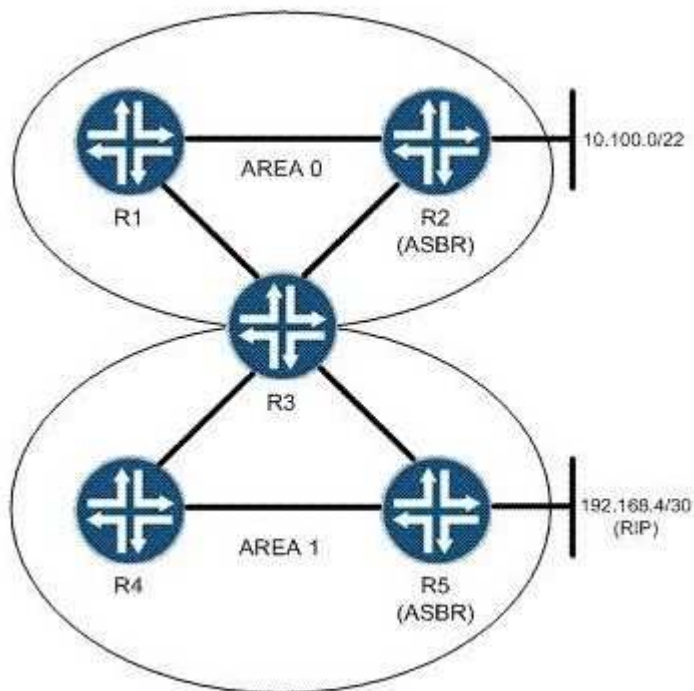
Explanation

Explanation/Reference:

Explanation:

QUESTION 92

Click the Exhibit button.



Based on the topology shown in the exhibit, which two configuration statements must be applied on R2 so that it announces the 10.100.0/22 network to its OSPF neighbors? (Choose two.)

- A. [edit policy-options policy-statement announce] set term 1 from route-filter 10.100.0/22 exact accept
- B. [edit policy-options policy-statement announce] set term 1 from 10.100.0/22 exact accept
- C. [edit] set protocols ospf export announce
- D. [edit] set protocols ospf area 0 export announce

Correct Answer: AC

Section: (none)

Explanation

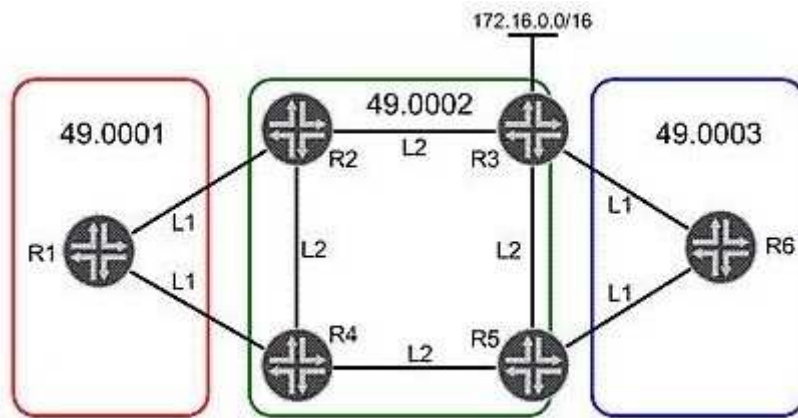
Explanation/Reference:

Explanation:

QUESTION 93

Click the Exhibit button.

"Pass Any Exam. Any Time." - www.actualtests.com 105 Juniper JN0-660: Practice Exam



The IGP is IS-IS. R2 has configured its loopback interface in Level 2 only. Referring to the exhibit, which statement is true?

- A. R2 advertises its loopback address to all L1 adjacencies.
- B. R1 cannot reach R2's loopback address.
- C. R1 uses a default route to reach R2's loopback address.
- D. R1 automatically selects R2 as the default gateway to reach R2's loopback address.

Correct Answer: C

Section: (none)

Explanation

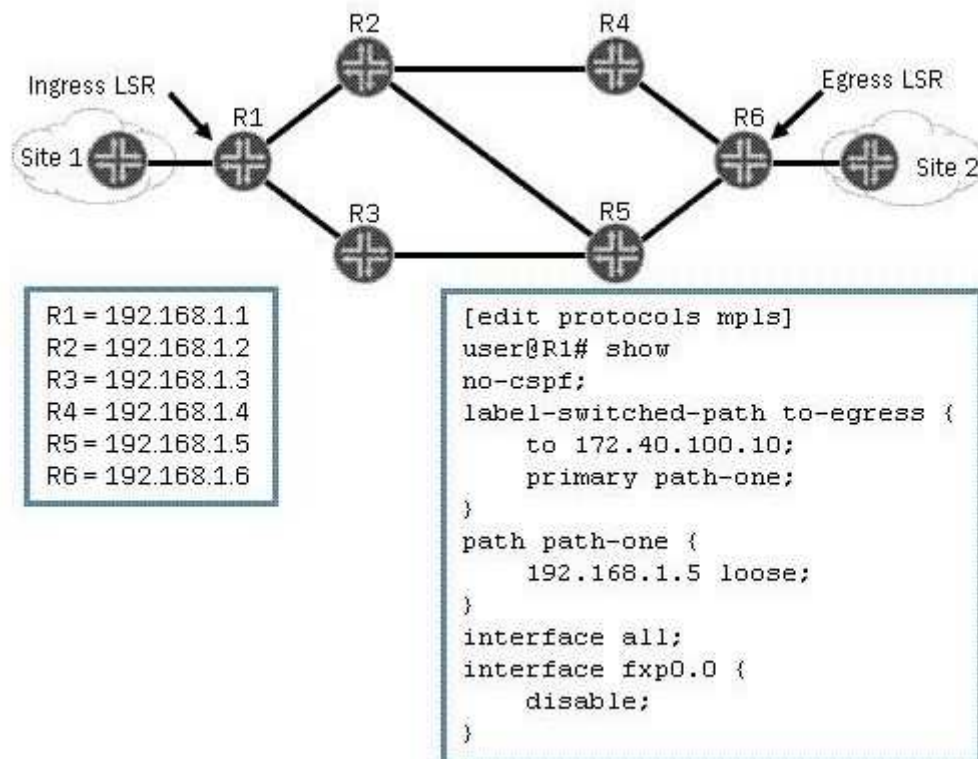
Explanation/Reference:

Explanation:

QUESTION 94

Click the Exhibit button.

"Pass Any Exam. Any Time." - www.actualtests.com 106 Juniper JN0-660: Practice Exam



Using the configuration and topology in the exhibit, which statement is true?

- A. Each LSR randomly selects the physical path to reach the loose hop R5 for the LSP.
- B. Each LSR uses the IGP to select the physical path to reach the loose hop on R5 for the LSP.
- C. Each LSR selects the lowest next-hop IP address to reach the loose hop on R5 for the LSP.
- D. Each LSR selects the highest next-hop IP address to reach the loose hop on R5 for the LSP.

Correct Answer: B

Section: (none)

Explanation

Explanation/Reference:

Explanation:

QUESTION 95

Click the Exhibit button.

"Pass Any Exam. Any Time." - www.actualtests.com 107 Juniper JN0-660: Practice Exam

```

[edit]
root@R4# run show isis database
IS-IS level 1 link-state database:
LSP ID                Sequence Checksum Lifetime Attributes
R4.00-00                0x4    0xe888    1154    L1 L2
R3.00-00                0x3    0x2ce1    1150    L1 L2
R3.02-00                0x2    0x46c7    1150    L1 L2
  3 LSPs

IS-IS level 2 link-state database:
LSP ID                Sequence Checksum Lifetime Attributes
R4.00-00                0x5    0xee7d    1154    L1 L2
R3.00-00                0x4    0xed1f    1150    L1 L2
R3.02-00                0x3    0x44c8    1151    L1 L2
  3 LSPs

[edit]
root@R4#

```

Based on the output in the exhibit, which statement is correct?

- A. R4 has been configured with an IS-IS export policy and is announcing external routing information.
- B. R3 and R4 have an adjacency at both level 1 and level 2.
- C. R3 has been configured so that it is not used for transit traffic.
- D. R3 and R4 have only a level 2 adjacency.

Correct Answer: B

Section: (none)

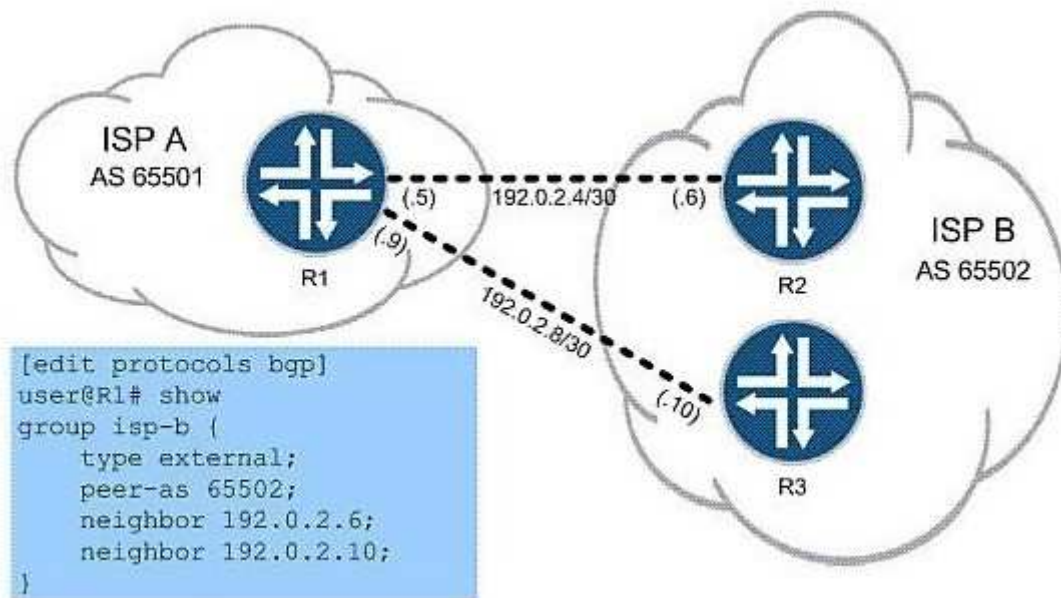
Explanation

Explanation/Reference:

Explanation:

QUESTION 96

Click the Exhibit button.



"Pass Any Exam. Any Time." - www.actualtests.com 108 Juniper JN0-660: Practice Exam

You work for ISP A, as shown in the exhibit, and must configure R1 to use load balancing across both available links for all routes to ISP B's network. You start by configuring this policy:

```

policy-statement load-balance {
  then {
    load-balance per-packet;
  }
}

```

Which two commands do you use to finish the configuration? (Choose two.)

- A. set protocols bgp group isp-b multipath
- B. set routing-options forwarding-table export load-balance
- C. set routing-options forwarding-table import load-balance
- D. set protocols bgp group isp-b multipath

Correct Answer: BD

Section: (none)

Explanation

Explanation/Reference:

Explanation:

QUESTION 97

Click the Exhibit button.

```
root@R7# run show isis database extensive | find TLV
TLVs:
  Area address: 49.0001 (3)
  Speaks: IP
  Speaks: IPV6
  IP router id: 192.168.3.1
  IP address: 192.168.3.1
  Hostname: R7
  IP prefix: 192.168.3.1/32, Internal, Metric: default 0, Up
  IP prefix: 10.10.10.0/24, Internal, Metric: default 10, Up
  IP extended prefix: 192.168.3.1/32 metric 0 up
  IP extended prefix: 10.10.10.0/24 metric 10 up
  No queued transmissions
```

Based on the output shown in the exhibit, what does up signify?

- A. Prefixes are up if the interface on the local router toward the destination is functioning correctly.
- B. Prefixes are up if their unfragmented-packets value is flagged in the LSP.
- C. Prefixes are up if their LSP has not crossed an area boundary from level 2 to level 1.
"Pass Any Exam. Any Time." - www.actualtests.com 109 Juniper JN0-660: Practice Exam
- D. Prefixes are up if their unusable-path value is flagged in the LSP.

Correct Answer: C

Section: (none)

Explanation

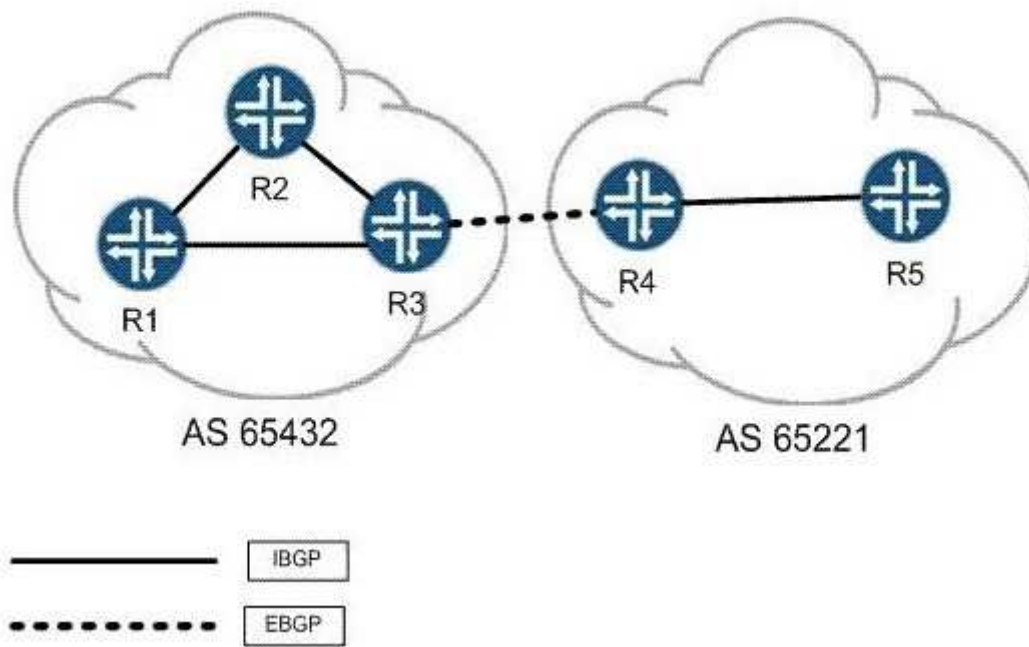
Explanation/Reference:

Explanation:

QUESTION 98

Click the Exhibit button.

"Pass Any Exam. Any Time." - www.actualtests.com 110 Juniper JN0-660: Practice Exam



R3 is announcing a route to R4 using EBGP, as shown in the exhibit. All routers in AS 65221 should learn this route, but it should not be announced to any other AS. What can be done to enforce this behavior?

- A. R3 should add the community no-export to the route prior to announcing it.
- B. R3 should add the community no-advertise to the route prior to announcing it.
- C. R4 should add the community no-announce after receiving the route.
- D. R4 should add the community no-advertise after receiving the route.

Correct Answer: A

Section: (none)

Explanation

Explanation/Reference:

Explanation:

QUESTION 99

Click the Exhibit button.

```

interfaces {
  ge-0/0/0 {
    disable;
  }
}

```

Which choice shows the configuration in the exhibit in SLAX format?

"Pass Any Exam. Any Time." - www.actualtests.com 111 Juniper JN0-660: Practice Exam

- ☐ A. `<interfaces> {
 <interface> {
 <name="ge-0/0/0"/>;
 <disable>;
 }
}`
- ☐ B. `<interfaces>
 <interface>
 <name>ge-0/0/0</name>
 <disable/>
 </interface>
</interfaces>`
- ☐ C. `interfaces {
 interface {
 name "ge-0/0/0";
 disable;
 }
}`
- ☐ D. `<interfaces> {
 <interface> {
 <name> "ge-0/0/0";
 <disable>;
 }
}`

- A. Option A
B. Option B
C. Option C
D. Option D

Correct Answer: D

Section: (none)

Explanation

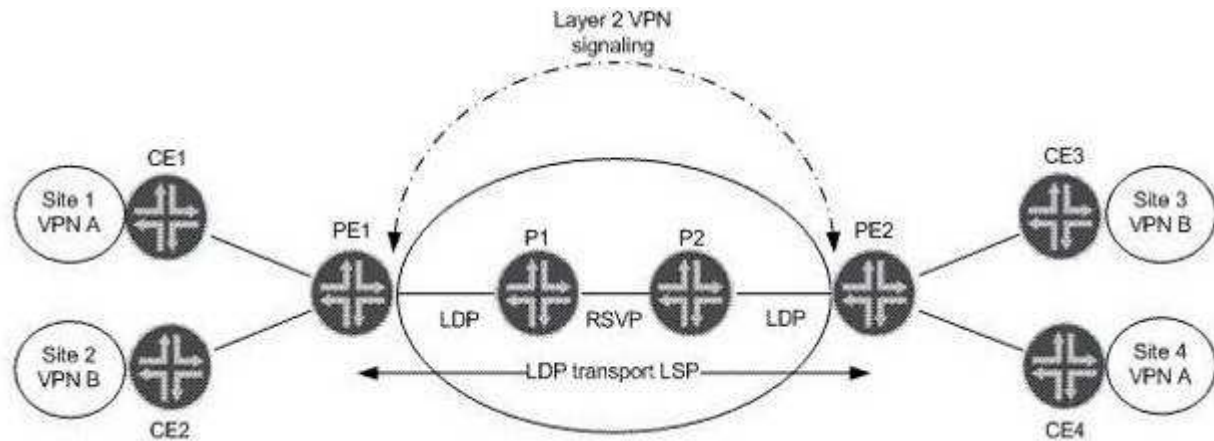
Explanation/Reference:

Explanation:

QUESTION 100

Click the Exhibit button.

"Pass Any Exam. Any Time." - www.actualtests.com 112 Juniper JN0-660: Practice Exam



Referring to the exhibit, which statement is true assuming LDP VPN signaling?

- A. PE1 uses the label value received from PE2 for VPN B as the inner label for VPN B.
- B. PE2 uses the label value received from PE1 for VPN A as the transport label for VPN A.
- C. P1 uses the label value for VPN A advertised by PE1, because RSVP is enabled.
- D. PE1 uses the transport label value received for VPN A that is advertised by PE2 as the inner label for VPN A.

Correct Answer: A

Section: (none)

Explanation

Explanation/Reference:

Explanation:

QUESTION 101

Which configuration excerpt will advertise all local IPv4 and IPv6 destinations to the network?

"Pass Any Exam. Any Time." - www.actualtests.com 113 Juniper JN0-660: Practice Exam

```

C A. protocols {
    ospf {
        area 0.0.0.0 {
            family inet {
                interface all;
            }
            family inet6 {
                interface all;
            }
        }
    }
}

```

```

C B. protocols {
    ospf {
        export ipv6-routes;
        area 0.0.0.0 {
            interface all;
        }
    }
}

policy-options {
    policy-statement ipv6-routes {
        term get-ipv6 {
            from family inet6;
            then accept;
        }
    }
}

```

```

C C. protocols {
    ospf {
        area 0.0.0.0 {
            interface all;
        }
    }
    ospf3 {
        area 0.0.0.0 {
            interface all;
        }
    }
}

```

```

C D. protocols {
    ospf3 {
        export ipv4-routes;
        area 0.0.0.0 {
            interface all;
        }
    }
}

policy-options {

```

- A. Option A
"Pass Any Exam. Any Time." - www.actualtests.com 114 Juniper JN0-660: Practice Exam
- B. Option B
- C. Option C
- D. Option D

Correct Answer: C

Section: (none)

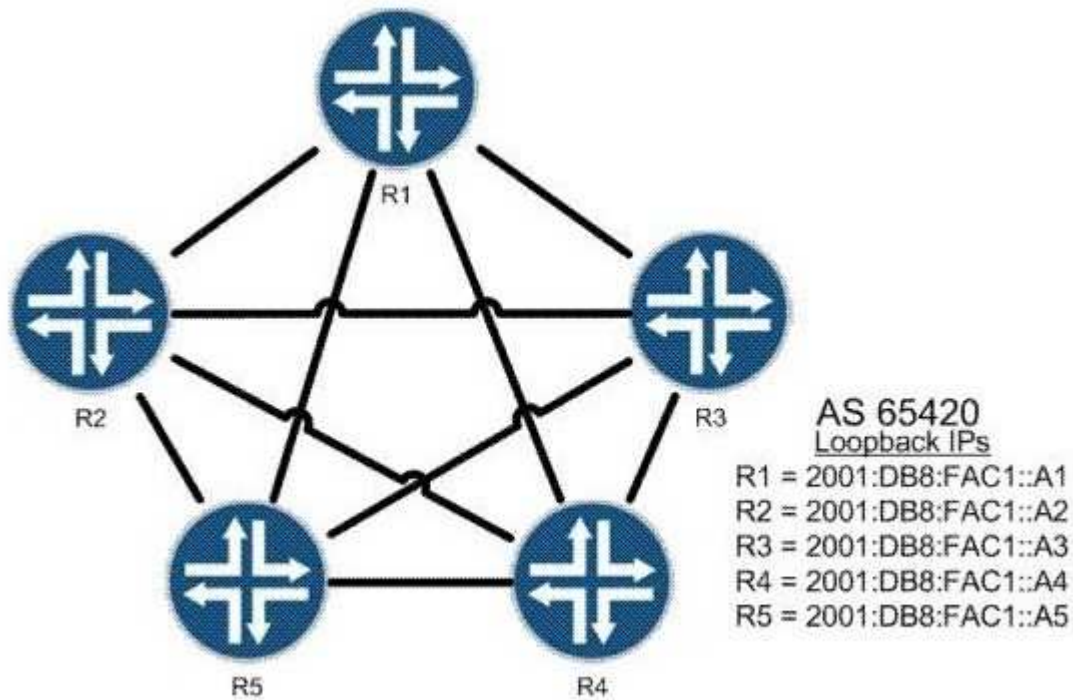
Explanation

Explanation/Reference:

Explanation:

QUESTION 102

Click the Exhibit button.



All routers shown in the exhibit are BGP neighbors. R1 must be a route reflector, and R2 through R5 must be clients. R2 should only receive one copy of all routes sent from R4. Which configuration is valid?

"Pass Any Exam. Any Time." - www.actualtests.com 116 Juniper JN0-660: Practice Exam

- Ⓐ A. [edit protocols bgp]
root@R3# show
group AS65420 {
 type reflector;
 local-address 2001:db8:fac1::a3;
 neighbor 2001:db8:fac1::a1;
 neighbor 2001:db8:fac1::a2;
 neighbor 2001:db8:fac1::a4;
 neighbor 2001:db8:fac1::a5;
}
- Ⓑ B. [edit protocols bgp]
root@R1# show
group AS65420 {
 type internal;
 local-address 2001:db8:fac1::a1;
 cluster 10.1.1.1;
 no-client-reflect;
 neighbor 2001:db8:fac1::a2;
 neighbor 2001:db8:fac1::a3;
 neighbor 2001:db8:fac1::a4;
 neighbor 2001:db8:fac1::a5;
}
- Ⓒ C. [edit protocols bgp]
root@R3# show
group AS65420 {
 type internal;
 local-address 2001:db8:fac1::a3;
 cluster 10.1.1.1;
 no-client-reflect;
 neighbor 2001:db8:fac1::a1;
 neighbor 2001:db8:fac1::a2;
 neighbor 2001:db8:fac1::a4;
 neighbor 2001:db8:fac1::a5;
}
- Ⓓ D. [edit protocols bgp]
root@R1# show
group AS65420 {
 type internal;
 local-address 2001:db8:fac1::a1;
 neighbor 2001:db8:fac1::a2;
 neighbor 2001:db8:fac1::a3;
 neighbor 2001:db8:fac1::a4;
 neighbor 2001:db8:fac1::a5;
}

- A. Option A
- B. Option B
- C. Option C
- D. Option D

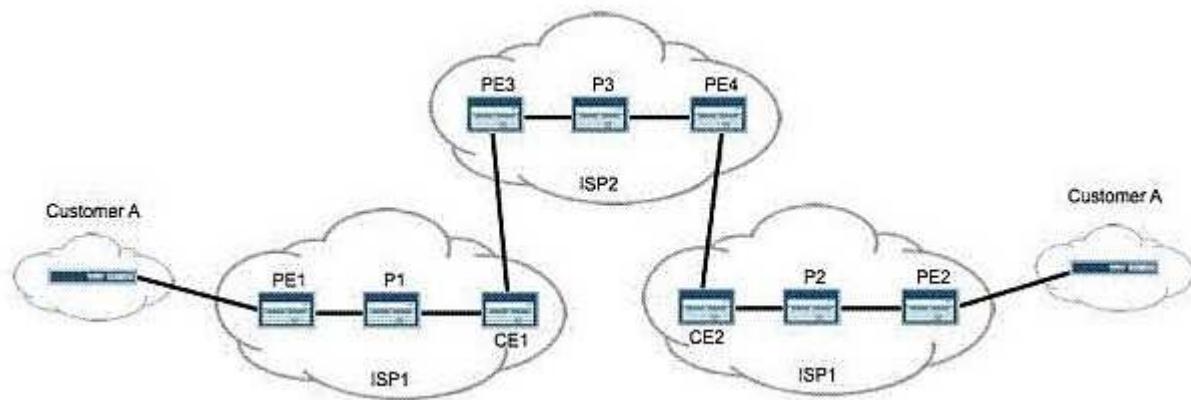
"Pass Any Exam. Any Time." - www.actualtests.com 117 Juniper JN0-660: Practice Exam

Correct Answer: B
Section: (none)
Explanation

Explanation/Reference:
 Explanation:

QUESTION 103

Click the Exhibit button.



Customer A wants a Layer 3 VPN between their two sites. To support this, you purchase a carrier- of-carriers solution from ISP2. Referring to the topology in the exhibit, how many labels does PE1 push onto data packets destined for PE2?

- A. 1
- B. 2
- C. 3
- D. 4

Correct Answer: C
Section: (none)
Explanation

Explanation/Reference:
 Explanation:



<http://www.gratisexam.com/>