

70-331.117q

Number: 70-331
Passing Score: 800
Time Limit: 120 min



70-331

Core Solutions of Microsoft SharePoint Server 2013

Testlet 1

Background

You are the SharePoint administrator for a large company. You are responsible for installing and configuring a multi-server SharePoint environment that will be used for information management and collaboration.

The company has an Active Directory Domain Services (AD DS) domain. User-specific contact information, including employee photos, is stored and managed in Active Directory. All employees are located in the ActiveUsers organizational unit (OU).

The User Profile Synchronization service runs on a server named SERVER1.

Business Requirements

The SharePoint environment must meet the following business requirements:

- Ensure that users can connect to the portal by using the same URL from any location.
- Ensure that users can access corporate information from outside the network without using a VPN connection.
- Allow users to configure notifications for content changes.
- Allow users to follow content creators.
- Limit the number of sites and people each user can follow to 100.
- Allow content authors to upload documents, large image files, and large video files for consumption by internal and external users.
- Allow administrators to promote search query results across the entire company.
- Utilize My Sites to share content.
- Provide opportunities for social interaction.

Technical Requirements

You must meet the following technical requirements for the SharePoint environment:

- Do not exceed the minimum hardware specifications.
- Install the minimum supported versions of all software on the servers.
- Control the growth of storage utilization.
- Maximize existing content database usage before creating new content databases.
- Store large files on network attached storage (NAS).
- Ensure that all web applications, site collections, files, databases, and components stay within the supported limits.
- Configure the User Profile Synchronization service to import user profile data from Active Directory.
- Grant the User Profile service account the least permissions necessary to read data.
- Ensure that current and future SharePoint environments include the most recent software updates.
- Use predefined database naming conventions.
- Create individual user sites by using the `https://contoso.com/personal/path`.

QUESTION 1

You create a User Profile Synchronization connection.

You need to grant the necessary permissions to the synchronization account.

What should you do?

- A. Grant the account Full Control on the ActiveUsers OU.
- B. Grant the account Full Control on the AuthenticatedUsers AD security group.
- C. Grant the account Read permission on the domain.
- D. Grant the account the Replicate Directory Changes permission on the domain.

Correct Answer: D

Section: [none]

Explanation

Explanation/Reference:

Scenario:

- The User Profile Synchronization service runs on a server named SERVER1.
- Configure the User Profile Synchronization service to import user profile data from Active Directory.
- Grant the User Profile service account the least permissions necessary to read data.

Reference: <https://technet.microsoft.com/en-us/library/hh296982.aspx>

QUESTION 2

You need to ensure that content authors can publish the specified files.

What should you do?



<https://www.gratisexam.com/>

- A. Create multiple authoring site collections. Create a site that contains lists, document libraries, and a Pages library. Create an asset library in a new site collection, and enable anonymous access to the library on the publishing web application.
- B. Create multiple authoring site collections. Create a site that contains lists, document libraries, and a Pages library. Create an asset library in the authoring site collection, and enable anonymous access to the library on the authoring web application.
- C. Create one authoring site collection. Create a site that contains multiple lists, document libraries, and Pages libraries. Create an asset library in a new site collection, and enable anonymous access to the library on the publishing web application.
- D. Create multiple authoring site collections. Create a site that contains multiple lists, document libraries, and Pages libraries. Create an asset library in a new site

<https://www.gratisexam.com/>

collection, and enable anonymous access to the library on the publishing web application.

Correct Answer: B

Section: [none]

Explanation

Explanation/Reference:

Explanation:

Scenario:

- Allow content authors to upload documents, large image files, and large video files for consumption by internal and external users.
- Utilize My Sites to share content.

QUESTION 3

You need to import employee photos into SharePoint user profiles by using the least amount of administrative effort.

Which three actions should you perform? (Each correct answer presents part of the solution. Choose three.)

- A. Define a mapping for the thumbnailPhoto attribute of the Picture user profile property.
- B. Run the Update-SPUserSolution Windows PowerShell cmdlet.
- C. Run an incremental synchronization of the User Profile Synchronization service.
- D. Run a full synchronization of the User Profile Synchronization service.
- E. Run the Update-SPProfilePhotoStore Windows PowerShell cmdlet.
- F. Define a mapping for the photo attribute of the Picture user profile property.

Correct Answer: ADE

Section: [none]

Explanation

Explanation/Reference:

Explanation:

Scenario:

- User-specific contact information, including employee photos, is stored and managed in Active Directory. All employees are located in the ActiveUsers organizational unit (OU).
- Configure the User Profile Synchronization service to import user profile data from Active Directory.

Importing Images Into SharePoint User Profiles My Sites

To make the user images that we have uploaded into the thumbnail Photo attribute in Active Directory available in SharePoint we will first need to map it to the Picture property in the User Profile Service Application.

- Firstly, you will need to go into the User Profile Service Application.
 - Central Admin > Application Management > Service Applications > Manage Service Applications > User Profile Service Application
- Then you will need to go into the Manage User Properties section and edit the Picture property.
- Next we will map the Active Directory property thumbnail Photo to the Picture property in SharePoint
 - Once the mapping has been applied the Manage User Properties page will look like this.
 - Now we will need to run a Full User Profile Synchronization job so that SharePoint can import the user images from Active Directory Synchronization > Start Profile Synchronization > Start Full Synchronization
 - Lastly we will need to force SharePoint to update the User Profile Database This will create the thumbnails that are used in My Sites and the User Profile Service. This will need to be run in the SharePoint PowerShell Console with the appropriate My Site permissions.

```
1 # This will create thumbnails from the user profile images saved in the My Sites User
  Profile pictures library
2 Update-SPPProfilePhotoStore -MysiteHostLocation http://mysites -
  CreateThumbnailsForImportedPhotos 1
```

Reference: <https://richardstk.com/2013/04/12/import-user-photos-from-active-directory-into-sharepoint-2013/>

QUESTION 4

You copy the content of the SharePoint installation media and software updates to your hard drive.

You need to meet the setup requirements for future SharePoint server installations.

What should you do?

- A. Extract the content of each file to the Updates folder by running the /extract:<path> command.
- B. Upgrade the installation media by running the /lang:<lcid> command.
- C. Extract the content of each file to the Setup folder by running the /extract:<path> command.
- D. Extract the content of each file to the PrerequisiteInstallerFiles folder by running the /extract:<path> command.

Correct Answer: A

Section: [none]

Explanation

Explanation/Reference:

Explanation:

Slipstreaming SharePoint installation media gives you a robust and repeatable way to configure multiple servers from one install source. This source is generally a network share that will contain both the original SharePoint installation media and the updates you choose.

To prepare the slipstream media on a network share called \\WS2012DC\SPInstall, do the following:

- Copy the original SharePoint 2013 installation media to the SPInstall share.
- If you have multiple updates you want to consolidate, extract each update, starting with the oldest update first. For each update, do this:
 - Download the software update package
 - Extract the update using the /extract switch; for example:
sts2013-kb2752058-fullfile-x64-glb.exe /extract:\\ws2012dc\spinstall\updates

QUESTION 5

You need to implement corporate sizing and performance guidelines for general usage scenarios.

Which three actions should you perform? (Each correct answer presents part of the solution. Choose three.)

- A. For the Remote BLOB Storage (RBS) storage subsystem on network attached storage (NAS), limit the maximum time-to-first-byte (TTFB) of any response from the NAS to 100 milliseconds.
- B. Limit the maximum size of each content database to 4 TB.
- C. For the Remote BLOB Storage (RBS) storage subsystem on network attached storage (NAS), limit the maximum time-to-first-byte (TTFB) of any response from the NAS to 20 milliseconds.
- D. Limit the number of documents in each document library to 20 million.
- E. Limit the number of documents in each content database to 10 million.
- F. Limit the maximum size of each content database to 200 GB.

Correct Answer: CEF

Section: [none]

Explanation

Explanation/Reference:

C: Network Attached Storage (NAS) is only supported by SharePoint 2013 with iSCSI and if TTFB is less than 20ms.

E: The largest number of items per content database that has been tested on SharePoint Server 2013 is 60 million items, including documents and list items. If you plan to store more than 60 million items in SharePoint Server 2013, you must deploy multiple content databases.

F: We strongly recommended limiting the size of content databases to 200 GB, except when the circumstances in the following rows in this table apply. If you are using Remote BLOB Storage (RBS), the total volume of remote BLOB storage and metadata in the content database must not exceed this limit.

Note: The use of RBS-enabled content databases larger than 4TB with collaboration sites is not supported.

Reference: Plan for RBS in SharePoint 2013

Reference: Software boundaries and limits for SharePoint 2013

QUESTION 6

You need to ensure that service applications meet the technical requirements by using the least amount of administrative effort.

What should you do?

- A. Use the Farm Configuration Wizard to add service applications.
- B. Use Windows PowerShell to configure service applications.
- C. Use the SharePoint Products Configuration Wizard to complete the server configuration.
- D. In Central Administration, manually create each service application.

Correct Answer: B

Section: [none]

Explanation

Explanation/Reference:

Testlet 1

Background

General Background

You are a SharePoint administrator for an online photo-processing company named Contoso, Ltd. Contoso's primary customers are professional photographers. The Contoso SharePoint 2013 environment includes the sites described in the following table.

Description	URL	Usage
Public website	www.adatum.com	Photographers upload photos, customize print-processing options, and pay for orders.
Intranet site	intranet.contoso.com	Contoso employees collaborate with colleagues and store processed photo files.

The intranet site includes a document library for each employee in which the employee stores photos.

Technical Background

The SharePoint environment contains five front-end web servers that use Windows Network Load Balancing (NLB) with NLB affinity set to None. The company maintains all processed photos in the SharePoint content database. The content database uses RAID 5 storage. Photo files that are more than one year old are rarely viewed. Employees actively use the default self-service site creation feature.

The network infrastructure contains an Active Directory Domain Services (AD DS) environment. All servers run Windows Server 2008 R2. The internal AD DS domain is named contoso.com. Active Directory Federation Services (AD FS) is deployed in the LAN. Two AD FS proxy servers are deployed in the perimeter network. Users log on to client computers by using the syntax username@contoso.com.

Contoso has a lab environment that includes a dedicated AD DS environment and SharePoint 2013. The main lab SharePoint site is located at lab.intranet.contoso.com. A test site for a project named Project2 exists under lab.intranet.contoso.com/corp. The default self-service site creation feature is enabled for the test site.

Contoso has a development team that maintains the public website, maintains the intranet site, and creates SharePoint apps. The development team recently created a SharePoint-hosted app named App1 that converts .tif files to .png files.

Future Development

- Contoso is forming a new corporation named Proseware, Inc. that will sell SharePoint apps. The company has acquired the proseware.com domain name.
- Contoso is preparing to federate with Microsoft Office 365 and will use the proseware.com domain for Office 365 services.

Technical Requirements

You must meet the following technical requirements:

- App1 must have access to each employee's photo document library.
- App1 must use Windows Authentication.
- Each front-end web server must use a single IP address for all SharePoint sites and apps on that server.
- All SharePoint sites and apps must listen on port 9000.
- Office 365 must use single sign-on (SSO).

The company has established the following new monitoring requirements for the production SharePoint environment:

- Monitor whether a large number of documents are checked out.
- Monitor whether a large number of unpublished items are being requested.

The company has established the following new monitoring requirements for Project2:

- Monitor changes to a value in a specific registry key.
- Monitor the SharePoint cache hit ratios.
- Perform monitoring only from 9:00 A.M. to 3:00 P.M. daily.

Existing Problems

Multiple authentications often occur when users log on to and navigate in SharePoint. Users have reported some small delays accessing data.

The content database is currently stored on Serial Attached SCSI (SAS) disk drives and is growing at a rapid pace. The following related issues currently exist:

- SharePoint is not performing as well as it was when the content database was smaller.
- Storage costs to house the photo files are too expensive.

Scanned contracts are stored in binary large object (BLOB) cache storage. The BLOB cache is routinely filling up. End users are reporting poor performance when viewing scanned contracts.

QUESTION 1

You need to create a new site collection while maintaining the ability for users to create their own sites.

What should you do?

- A. Use a path-based site collection and a single farm that contains all the web applications.
- B. Create a host-named site collection and use a single farm that contains all the web applications.
- C. Use a path-based site collection and alternate access mappings.
- D. Create a host-named site collection and use a single farm that contains a single consolidated web application.

Correct Answer: B

Section: [none]

Explanation

Explanation/Reference:

The main lab SharePoint site is located at lab.intranet.contoso.com. A test site for a project named Project2 exists under lab.intranet.contoso.com/corp.

QUESTION 2

You need to meet the Project2 monitoring requirements.

What should you do?

- A. Create a user-defined data collector set.
- B. Monitor only startup event trace sessions.
- C. Monitor only event trace sessions.
- D. Use a system-defined data collector set.

Correct Answer: A

Section: [none]

Explanation

Explanation/Reference:

Scenario:

The company has established the following new monitoring requirements for Project2:

Monitor changes to a value in a specific registry key.

Monitor the SharePoint cache hit ratios.

Perform monitoring only from 9:00 A.M. to 3:00 P.M. daily.

QUESTION 3

You need to configure a managed path to support Project2.

What should you do?

- A. Use an explicit inclusion for /corp.
- B. Create a new IIS virtual directory under the /corp site.
- C. Create a new IIS virtual directory under the default website.
- D. Use a wildcard inclusion for /corp.

Correct Answer: D

Section: [none]

Explanation

Explanation/Reference:

QUESTION 4

You need to implement Office 365 authentication.

What should you do?

- A. Add only adatum.com as an Office 365 SSO domain and use the SupportMultipleDomain parameter.
- B. Create an AD DS domain named proseware.com and join the AD FS servers to the proseware.com domain.
- C. Add adatum.com and proseware.com as Office 365 SSO domains and use the SupportMultipleDomain parameter.
- D. Add only proseware.com as an Office 365 SSO domain and use the SupportMultipleDomain parameter.

Correct Answer: C

Section: [none]

Explanation

Explanation/Reference:

Scenario:

Contoso is forming a new corporation named Proseware, Inc. that will sell SharePoint apps. The company has acquired the proseware.com domain name.

Contoso is preparing to federate with Microsoft Office 365 and will use the proseware.com domain for Office 365 services.

The network infrastructure contains an Active Directory Domain Services (AD DS) environment. All servers run Windows Server 2008 R2. The internal AD DS domain is named contoso.com. Active Directory Federation Services (AD FS) is deployed in the LAN. Two AD FS proxy servers are deployed in the perimeter network.

Office 365 must use single sign-on (SSO).

This is difficult to answer because none of the answers is a complete answer. We do need to add proseware.com as an Office 365 SSO domain. However, as the users log in using user@contoso.com, we would also have to configure the user accounts with a UPN of proseware.com.

Answer B is also incomplete as you would still need the users to log in using user@proseware.com.

QUESTION 5

You need to select the appropriate authentication method for App1.

What should you do?

- A. Use classic mode authentication and set the authentication type to NTLM.
- B. Use classic mode authentication and set the authentication type to Kerberos.
- C. Use the SharePoint server-to-server security token service (STS).
- D. Use the Open Authorization 2.0 (OAuth 2.0) web authorization protocol.

Correct Answer: D

Section: [none]

Explanation

Explanation/Reference:

QUESTION 6

You need to resolve the authentication issue that occurs in the SharePoint environment.

What should you do?

- A. Deploy the Secure Store Service.
- B. Use classic mode authentication and set the authentication type to NTLM.
- C. Use the Distributed Cache service.
- D. Use classic mode authentication and set the authentication type to Kerberos.
- E. Use the Open Authorization 2.0 (OAuth 2.0) web authorization protocol.

Correct Answer: A

Section: [none]

Explanation

Explanation/Reference:

Explanation:

Scenario:

The SharePoint environment contains five front-end web servers that use Windows Network Load Balancing (NLB) with NLB affinity set to None.

App1 must use Windows Authentication.

App1 must have access to each employee's photo document library

Multiple authentications often occur when users log on to and navigate in SharePoint. Users have reported some small delays accessing data.

The question refers to 'the authentication issue' - strangely it is not clear what is meant.

The Secure Store Service is an authorization service that runs on an application server. The Secure Store Service provides a database that is used to store credentials. These credentials usually consist of a user identity and password, but can also contain other fields that you define. For example, SharePoint Server 2013 can use the Secure Store database to store and retrieve credentials for access to external data sources. The Secure Store Service provides support for storing multiple sets of credentials for multiple back-end systems.

QUESTION 7

You need to implement Office 365 authentication.

What should you do?

- A. Create an AD DS domain named proseware.com and join the AD FS servers to the proseware.com domain.
- B. Add a DNS CNAME record for www.proseware.com and point it to www.adatum.com.
- C. Deploy an AD FS proxy for the proseware.com domain.

D. Add proseware.com as an Office 365 SSO domain and update all user principal names (UPNs) to also use proseware.com.

Correct Answer: D

Section: [none]

Explanation

Explanation/Reference:

Explanation:

There are three versions of this question; each with different answer options. This answer is the only complete answer option in all three versions of the question. It is common for users to log in using onedomain name and connect to Office 365 using a different domain name. For example: contoso.local and contoso.com. The solution is to add the office 365 domain as a UPN (User Principle Name) for the user accounts.

QUESTION 8

You need to resolve the authentication issue that occurs in the SharePoint environment.

What should you do?

- A. Use classic mode authentication and set the authentication type to Kerberos.
- B. Deploy the Secure Store Service.
- C. Use the Open Authorization 2.0 (OAuth 2.0) web authorization protocol.
- D. Use the Distributed Cache service.

Correct Answer: D

Section: [none]

Explanation

Explanation/Reference:

QUESTION 9

You need to implement Office 365 authentication.

What should you do?

- A. Create a two-way trust between proseware.com and adatum.com.
- B. Deploy an AD FS proxy for the proseware.com domain.
- C. Create an AD DS domain named proseware.com and join the AD FS servers to the proseware.com domain.
- D. Add adatum.com and proseware.com as Office 365 SSO domains and use the SupportMultipleDomain parameter.

Correct Answer: D

Section: [none]

Explanation

Explanation/Reference:

This is difficult to answer because none of the answers is a complete answer. We do need to add proseware.com as an Office 365 SSO domain. However, as the users log in using user@contoso.com, we would also have to configure the user accounts with a UPN of proseware.com.

Answer C is also incomplete as you would still need the users to log in using user@proseware.com.

QUESTION 10

You need to resolve the authentication issue that occurs in the SharePoint environment.

What should you do?



- A. Deploy the Secure Store Service.
- B. Use classic mode authentication and set the authentication type to Kerberos.
- C. Set the NLB client affinity to Single.
- D. Remove the Network Load Balancing feature from all of the servers.

Correct Answer: C

Section: [none]

Explanation

Explanation/Reference:

QUESTION 11

You need to resolve the authentication issue that occurs in the SharePoint environment.

What should you do?

- A. Remove the Network Load Balancing feature from all of the servers.

- B. Set the NLB client affinity to Single.
- C. Deploy the Secure Store Service.
- D. Use classic mode authentication and set the authentication type to NTLM.
- E. Use the SharePoint server-to-server security token service (STS).

Correct Answer: C

Section: [none]

Explanation

Explanation/Reference:

Explanation:

References:

<https://docs.microsoft.com/en-us/sharepoint/administration/secure-store-service-planning>

Testlet 1

Background

General Background

You are the SharePoint administrator for Blue Yonder Airlines. The company currently has a SharePoint 2010 environment. It is your responsibility to install and configure a SharePoint 2013 environment that will be used for information management and collaboration, both internally and with external partners. You must also migrate the existing SharePoint environment to SharePoint 2013.

Blue Yonder works with several external partners, including those described in the following table.

Partner company	Role	URL
Wingtip Toys	Designers of toy airplanes and other items sold by Blue Yonder.	http://www.wingtiptoys.com
Tailspin Toys	Manufacturers of all toys sold by Blue Yonder.	http://www.tailspintoys.com
Margie's Travel	Staffing company that provides just-in-time staffing options for air and ground personnel.	http://www.margiestravel.com

Blue Yonder collaborates with Wingtip Toys and Tailspin Toys to design, manufacture, and sell airline-related toys to customers. The Blue Yonder board of directors expects the collaborative design process to become more effective as a result of implementing SharePoint 2013.

Technical Background

All existing servers run Windows Server 2008 R2. The network infrastructure contains an Active Directory Domain Services (AD DS) environment. The internal AD DS domain is named blueyonderairlines.com. User-specific contact information is stored and managed in AD DS. All employees are located in the ActiveUsers organizational unit (OU). Active Directory Federation Services (AD FS) is deployed in the LAN. Two AD FS proxy servers are deployed in the perimeter network. Users log on to client computers by using the syntax username@blueyonderairlines.com.

Blue Yonder provides access to the SharePoint environment to partners through individual URLs for each partner company. Each partner company has a dedicated web application and site collection. The following table describes the access URLs.

Partner company	URL to access environment
Wingtip Toys	https://wingtiptoys.blueyonderairlines.com
Tailspin Toys	https://tailspintoys.blueyonderairlines.com
Margie's Travel	https://margiestravel.blueyonderairlines.com

In preparation for the upgrade you maximize the default upload limits for each web application.

Blue Yonder has an existing managed metadata service containing managed metadata and content types. The content types have workflows. You create a new managed metadata service connection for the Wingtip Toys web application.

A workflow created by Blue Yonder moves information through the product lifecycle. Each access URL specifies a separate web application, site collection, and site.

Business Requirements

The SharePoint environment must meet the following business requirements:

- Provide an environment where toy design, manufacturing, and sales information can be shared between Blue Yonder and partner companies.
- Provide a training site for internal and external users.
- Allow content authors of training materials to upload documents, large image files, and large video files for consumption by internal and external users.
- Allow users to sort content by category.
- Ensure that users from Wingtip Toys or Tailspin Toys can access content only in their own areas of the portal.
- Prevent users from Wingtip Toys and Tailspin Toys from adding terms or creating enterprise keywords.
- Content types and keywords must be shared between sites, site collections, and web applications.
- Simplify search processes by collecting unique characteristics and information about each uploaded item.
- Allow administrators to promote search query results across the entire environment.
- Allow resource coordinators from Blue Yonder to find temporary staffing options from Margie's Travel contractors and employees.
- Provide opportunities for social interaction between employees, contractors, and external contacts to promote idea generation and socialization.
- Utilize site feeds on all collaborative sites.
- Replicate profile information in the <https://blueyonderairlines.com> site to partner sites.
- Ensure that third-party vendors can read and modify documents.
- For publishing sites, use only friendly URLs that do not contain anything other than the direct address. Avoid URL constructions such as /Lists/Posts/Post.aspx?ID = 568.

Site content must meet the following requirements:

Individual training videos must be in single files, and presented on the training site.

Changes to confidential documents must be logged.

Technical Requirements

You must meet the following technical requirements:

- Store all large files outside of the SharePoint content database or databases.
- All servers must run on virtual machines.
- Ensure that search queries are handled by web servers.

- Ensure that all lists support multiple content types.

QUESTION 1

You need to ensure that all required sites can use microblogging features for collaboration.

Which two actions should you perform? (Each correct answer presents part of the solution. Choose two.)

- A. Enable the Site Feeds feature on each My Site.
- B. Enable the Following Content feature on each team site.
- C. Enable self-service site creation on the web application that contains the team sites.
- D. Enable the Site Feeds feature on each team site.

Correct Answer: BD

Section: [none]

Explanation

Explanation/Reference:

Scenario:

Provide opportunities for social interaction between employees, contractors, and external contacts to promote idea generation and socialization.

Utilize site feeds on all collaborative sites.

Setting up My Sites is the first step in configuring microblog features in SharePoint Server 2013.

QUESTION 2

You need to configure the existing managed metadata service application for term store management.

Which three actions should you perform? (Each correct answer presents part of the solution. Choose three.)

- A. Grant the Read and Restricted Write Access to Term Store permission to the Wingtip Toys and Tailspin Toys application pool accounts.
- B. Grant the Full Access to Term Store permission to the Blue Yonder application pool account.
- C. Add the managed metadata service connection to the application proxy group that is assigned to all three web applications.
- D. Grant the Read Access to Term Store permission to the Local Farm account.
- E. Grant the Read and Restricted Write Access to Term Store permission to the Local Farm account.

Correct Answer: BCE

Section: [none]

Explanation

Explanation/Reference:

Explanation:

Scenario:

In preparation for the upgrade you maximize the default upload limits for each web application. Blue Yonder has an existing managed metadata service containing managed metadata and content types. The content types have workflows. You create a new managed metadata service connection for the Wingtip Toys web application.

Prevent users from Wingtip Toys and Tailspin Toys from adding terms or creating enterprise keywords.

Content types and keywords must be shared between sites, site collections, and web applications.

A Managed Metadata service application enables Web applications to store and access keywords from a managed metadata term database. For My Sites, this functionality is required for users to specify keywords in the Ask Me About section or use keywords for social tagging. A Managed Metadata service application is highly recommended for My Sites.

Yesterday, one of our users has logged a ticket by mentioning that he is not able to update his skills in my site.

Error message: You do not have access to edit this user profile

This error is very tricky but simple to understand and troubleshoot where exactly the problem is as per the Microsoft guidelines.

This error can occur if Managed Metadata service application is connected to the Web application that hosts My Sites and the Managed Metadata Service

Application connection has only Read Access to Term Store permission.

To resolve this error, please do the following:

Answer:

Central Administration-Click Application Management

In the Service Applications section, click Manage service applications.

On the Manage Service Applications page, click the User Profile service application that is associated with the Web application that hosts My Sites, and then, in the Operations section of the ribbon, click Permissions.

In the Connection Permissions for Managed Metadata Service, click either Read and Restricted Write Access to TermStore or Full Access to Term Store.

Add the service to the proxy group

Reduce permission of Local Farm account to Read

Grant full access to Blue Yonder app pool account

Source: Overview of managed metadata service applications in SharePoint Server 2013

QUESTION 3

You need to specify hardware and software requirements for web servers used by the SharePoint environment.

Which two minimum requirements should you specify? (Each correct answer presents part of the solution. Choose two.)

- A. Virtual machine running Windows Server 2012
- B. 4-core virtual machine
- C. 6-core virtual machine
- D. Physical host running Windows Server 2008 R2
- E. Physical host running Windows Server 2012
- F. Virtual machine running Windows Server 2008 R2

Correct Answer: BF

Section: [none]

Explanation

Explanation/Reference:

Explanation:

Scenario:

All servers must run on virtual machines.

Processor - 4 cores

Reference: Hardware and software requirements for SharePoint 2013

QUESTION 4

Each training video file can be up to 10 GB in size.

You need to ensure that content authors can upload training video files.

Which two actions should you perform? (Each correct answer presents part of the solution. Choose two.)

- A. Compress large video files so that they do not exceed 2 GB each.
- B. Set the size limit of the content database to unlimited.
- C. Divide large video files into multiple files that do not exceed 50 MB each.
- D. Utilize Remote BLOB Storage.

Correct Answer: AD

Section: [none]

Explanation

Explanation/Reference:

A:

* Will the maximum file size limit change in SharePoint Server 2013?

No, the maximum file size that can be uploaded to SharePoint will remain at 2GB.

* The maximum file size limit for storing file content through SharePoint is 2 GB **regardless** of whether or not you are using RBS.

D: In SharePoint 2013, a binary large object (BLOB) is a file, such as a Office 2013 document or a video file. By default, these BLOBs, also named unstructured data, are stored online in the SharePoint content database together with the metadata, or structured data. Because BLOBs can be very large, it can be helpful to move BLOB data out of the SQL Server database, and onto commodity or content addressable storage. To do this, you can use RBS (Remote BLOB Storage).

Note:

* From Scenario (not C): Individual training videos must be in single files

* RBS stands for Remote Blob Storage. The premise of RBS is that it is much faster to render large BLOBs(Binary Large Objects) from a file system rather than from a database (such as the SharePoint Content Database). Therefore, by moving this content out of the SharePoint Content Database, you not only shrink the overall size of your content database, you are able to also move that content on external file stores such as SAN, NAS or DAS.

Reference: <https://technet.microsoft.com/en-us/library/ff628583.aspx>

QUESTION 5

You need to configure policy settings for the user profile properties in the farm.

Which three actions should you perform? (Each correct answer presents part of the solution. Choose three.)

- A. Turn on the Replicable setting.
- B. Turn on the User can override policy setting.
- C. Turn off the Replicable setting.
- D. Set the default privacy setting to Everyone.
- E. Turn off the User can override policy setting.
- F. Set the default privacy setting to My Team.

Correct Answer: ADE

Section: [none]

Explanation

Explanation/Reference:

Explanation:

Note:

* From scenario: Replicate profile information in the <https://blueyonderairlines.com> site to partner sites.

The property's value will be replicated to user information lists in other sites when its value changes. For a property to be replicated, its default privacy setting must be set to Everyone and the User can override policy must not be selected.

References:

<https://technet.microsoft.com/en-us/library/ee721054.aspx>

QUESTION 6

Workflows do not start in the <https://wingtip toys.blueyonderairlines.com> location.

You need to ensure that workflows start.



<https://www.gratisexam.com/>

What should you do?

- A. Set the managed metadata service connection permission to full.
- B. Copy the workflows from <https://blueyonderairlines.com> to <https://wingtiptoy.blueyonderairlines.com>.
- C. Copy the workflows from <https://tailspintoys.blueyonderairlines.com> to <https://wingtiptoy.blueyonderairlines.com>.
- D. Set the managed metadata service connection permission to Restricted.

Correct Answer: B

Section: [none]

Explanation

Explanation/Reference:

Scenario:

A workflow created by Blue Yonder moves information through the product lifecycle. Each access URL specifies a separate web application, site collection, and site.

QUESTION 7

You need to configure navigation for publishing sites.

What should you do?

- A. Create a managed path for the site collection.
- B. Modify the site settings to use managed navigation.
- C. Configure alternate access mapping.
- D. Modify the site settings to use structural navigation.

Correct Answer: B

Section: [none]

Explanation

Explanation/Reference:

Scenario:

For publishing sites, use only friendly URLs that do not contain anything other than the direct address. Avoid URL constructions such as /Lists/Posts/Post.aspx?ID=568.

<https://www.gratisexam.com/>

Blue Yonder has an existing managed metadata service containing managed metadata and content types. The content types have workflows. You create a new managed metadata service connection for the Wingtip Toys web application.

Testlet 1

Background

General Background

You are a SharePoint administrator for A. Datum Corporation. A. Datum is a large legal firm with offices in Chicago, New York, and London. A. Datum is merging with a smaller legal firm named Fabrikam, Inc.

Technical Background

A. Datum has an Active Directory Domain Services (AD DS) domain named adatum.com. The domain contains an Active Directory Rights Management Services (AD RMS) server.

The A. Datum SharePoint environment includes the sites described in the following table.

Site	URL	Description
Public site	www.adatum.com	Public website
Intranet portal	intranet.adatum.com	Internal portal for company information
Document portal	docs.adatum.com	Internal portal for document storage
My Site portal	my.adatum.com	Internal portal for social networking

The A. Datum SharePoint environment contains two servers that run all SharePoint services. The servers run Windows Server 2012 and are members of the domain. A third-party file-level antivirus application runs on all servers in the domain. The adatum.com farm uses Microsoft SQL Server 2012 for the SharePoint databases.

A. Datum is planning a three-tier SharePoint farm to replace the existing farm. A firewall will be placed between each tier. All servers must be virtualized unless otherwise specified. The following servers are available for the new SharePoint environment:

Server name	Operating system	Location
SERVER01	None	Chicago
SERVER02	None	Chicago
SERVER03	None	New York
HOST01	Windows Server 2012 with Hyper-V	Chicago
HOST02	Windows Server 2012 with Hyper-V	Chicago

All user accounts are stored in and maintained by using Active Directory. The My Site portal and document portal SharePoint sites receive user and group membership information by using Active Directory synchronization. New users often have to wait more than 24 hours before they can view their user profile

information.

Fabrikam has an AD DS domain named fabrikam.com and a single-server SharePoint environment.

Web Applications

A new remote web application named App1 will be hosted in the adatum.com domain. App1 will require access to SharePoint resources in the fabrikam.com domain. SharePoint administrators in the fabrikam.com domain must be able to administer App1 by using Windows PowerShell.

Technical Requirements

You must meet the following technical requirements:

- Fabrikam users must be able to directly access internal SharePoint resources in the adatum.com domain.
- Datum users must not be able to access resources in the fabrikam.com domain.
- All documents relating to the merger must contain a barcode, and must be protected from distribution.
- Authenticated users must not be prompted for credentials when they access App1.
- Users in the adatum.com domain must be able to access all SharePoint sites the same day they receive their Active Directory account credentials.
- When a user account is deleted, the user's personal site collection must automatically be removed within 12 hours.
- The antivirus application must not scan SharePoint directories.

When migrating the SharePoint environment, you must meet the following requirements:

- The application and database servers must not be accessible from the Internet.
- The database servers must accept connections only from the SharePoint servers.
- The database servers must be physical machines running Windows Server 2012 with direct access to storage.
- The database servers must be configured for redundancy.
- All database transaction logs must be sent off-site.
- All SharePoint installation prerequisites must be installed offline.

QUESTION 1

You need to configure SharePoint for the appropriate protection of merger documents.

What should you do?

- A. Configure Information Rights Management.
- B. Configure Web Part security.
- C. Configure document library permissions.
- D. Configure document conversions.

Correct Answer: A

Section: [none]

Explanation

Explanation/Reference:

QUESTION 2

You need to configure the antivirus application.

Which two actions should you perform? (Each correct answer presents a part of the solution. Choose two.)

- A. Configure scanning to exclude the %Program Files%\Microsoft SQL Server \MSSQL10_50.SHAREPOINT\ folder.
- B. Configure scanning to include the %Program Files%\Microsoft Office Servers\15.0\ folder.
- C. Configure scanning to exclude the %Program Files%\Microsoft Office Servers\15.0\ folder.
- D. Configure scanning to exclude the %Program Files%\Microsoft Office Servers\14.0\ folder.
- E. Configure scanning to include the %Program Files%\Microsoft Office Servers\14.0\ folder.
- F. Configure scanning to exclude the %Program Files%\Common Files\Microsoft shared\Web Server Extensions folder.

Correct Answer: CF

Section: [none]

Explanation

Explanation/Reference:

From Scenario:

The antivirus application must not scan SharePoint directories.

Folders that may have to be excluded from antivirus scanning in SharePoint

SharePoint Foundation 2013

You may have to configure your antivirus software to exclude the following folders and subfolders from antivirus scanning:

- *Drive:\Program Files\Common Files\Microsoft Shared\Web Server Extensions*
-
- If you do not want to exclude the whole Web Server Extensions folder from antivirus scanning, you

SharePoint Server 2013

You may have to configure the antivirus software to exclude the *Drive:\Program Files\Microsoft Office Servers* folder from antivirus scanning for SharePoint Server 2013. If you do not want to exclude the whole Microsoft Office Servers folder from antivirus scanning, you can exclude only the following folders:

- *Drive:\Program Files\Microsoft Office Servers\15.0\Data*
- (This folder is used for the indexing process. If the index files are configured to be located in a different folder, you also have to exclude that location.)
- *Drive:\Program Files\Microsoft Office Servers\15.0\Logs*
- *Drive:\Program Files\Microsoft Office Servers\15.0\Bin*
- *Drive:\Program Files\Microsoft Office Servers\15.0\Synchronization Service*
- Any location in which you decided to store the disk-based binary large object (BLOB) cache (for example, C:\Blobcache).

Note If you have SharePoint Server 2013, these folders should be excluded in addition to the folders that are listed in the "SharePoint Foundation 2013" section.

Reference: <https://support.microsoft.com/en-us/kb/952167>

QUESTION 3

You need to prepare the web servers for a SharePoint installation in the new farm.

Which three actions should you perform? (Each correct answer presents part of the solution. Choose three.)

- A. Save the PrerequisiteInstaller.Arguments file in the same directory as the prerequisite installer.
- B. Define the installation arguments in a file named PrerequisiteInstaller.Arguments.txt
- C. Install Windows Server 2012 on SERVER02.
- D. Define the installation arguments in a file named PrerequisiteInstaller.Arguments.cfg.
- E. Save the PrerequisiteInstaller.Arguments file in the SharePoint installation directory.
- F. Install Windows Server 2012 on a virtual machine.

Correct Answer: ABF

Section: [none]

Explanation

Explanation/Reference:

Explanation:

Scenario:

All servers must be virtualized unless otherwise specified

A, B: Using a text editor, create a new text document named PrerequisiteInstaller.Arguments.txt. Save this file to the same location as PrerequisiteInstaller.exe.

F: From Scenario: All servers must be virtualized unless otherwise specified

To install the prerequisites from the command line, you can create a file called prerequisiteinstaller.arguments.txt and copy this into the same folder as your prerequisiteinstaller.exe file extracted from the setup image.

Reference: <https://technet.microsoft.com/en-us/library/ff686793.aspx>

<https://blogs.msdn.microsoft.com/uksharepoint/2013/03/18/scripted-installation-of-sharepoint-2013-and-office-web-apps-server-from-the-field-part-2/>

QUESTION 4

You need to configure permissions for App1 administrators.

What should you do?

- A. Add the adatum.com SharePoint administrators as site collection administrators.
- B. Add the fabrikam.com SharePoint administrators to the SharePoint_Shell_Access role.
- C. Add the fabrikam.com SharePoint administrators as site collection administrators.
- D. Add the adatum.com SharePoint administrators to the SharePoint_Shell_Access role.

Correct Answer: B

Section: [none]

Explanation

Explanation/Reference:

SharePoint administrators in the fabrikam.com domain must be able to administer App1 by using Windows PowerShell.

QUESTION 5

You need to ensure that the web servers can communicate with service applications after you replace the existing farm.



<https://www.gratisexam.com/>

What should you do?

- A. Configure Windows Firewall to allow traffic on port 1433.
- B. Configure the network firewalls to allow traffic on port 32843.
- C. Configure Windows Firewall to allow traffic on port 32843.
- D. Configure the network firewalls to allow traffic on port 1433.

Correct Answer: B

Section: [none]

Explanation

Explanation/Reference:

TCP Port 32843: Communication between Web servers and service applications. http (default) To use custom port, see references section Inbound rule Added to Windows firewall by SharePoint

TCP Port 32844: Communication between Web servers and service applications. https Inbound rule Added to Windows firewall by SharePoint Reference: SharePoint 2013 Ports, Proxies and Protocols

<https://www.gratisexam.com/>

Reference: TCP/IP Ports of SharePoint 2013

QUESTION 6

You need to configure SharePoint to remove user account-related data.

Which Windows PowerShell cmdlet should you run?

- A. Enable-SPTimerJob
- B. Disable-SPTimerJob
- C. Start-SPTimerJob
- D. Set-SPTimerJob
- E. Get-SPTimerJob

Correct Answer: D

Section: [none]

Explanation

Explanation/Reference:

Explanation:

Scenario:

When a user account is deleted, the user's personal site collection must automatically be removed within 12 hours.

Testlet 1

Background

You are the SharePoint server administrator for Contoso, Ltd. Contoso has a SharePoint 2010 environment hosted on SharePoint Online and a separate on-premises SharePoint 2010 farm. You are preparing to upgrade the environments to newer versions of SharePoint. You are also planning to support a hybrid on-premises/cloud deployment that will be available to customers, partners, and third-party vendors.

Contoso collaborates with a partner company, Tailspin Toys, on multiple projects.

Technical Environment

All user groups reside in the existing Active Directory Domain Services (AD DS) domain corp.contoso.com.

The existing SharePoint Online environment is configured as follows:

- The SharePoint Online URL assigned by Microsoft is <http://contoso.sharepoint.com>.
- The SharePoint Online Administration Center URL is <https://contoso.admin.sharepoint.com>.
- The user name for the Contoso Office 365 administrator is admin@contoso.com.
- An existing line-of-business application provides an OData service that is hosted in Microsoft Windows Azure SQL Database.

The site collections are described in the following table.

Site collection	URL	Location
Corporate Projects	https://sharepoint.contoso.com/sites/projects	On-premises
Partner Projects	https://projects.contoso.com	Online

Business Requirements

The upgraded SharePoint environments must meet the following business requirements:

- All SharePoint 2013 features must be available to all users when connecting from inside or outside of the corporate network.
- Users of the Partner Projects site collection must be able to share content from their Microsoft Outlook clients and receive content from external users who send email directly to the site.
- The Corporate Projects site collection must be available to internal users who connect from outside of the corporate network and must not require a VPN connection.
- Third-party vendors must be able to read and modify documents.

Technical Requirements

You must meet the following technical requirements:

- Before upgrading the Partner Projects site collection, create a duplicate, upgraded copy of the site for review and verification purposes.
- Use Active Directory Federation Services (AD FS) 2.0 to authenticate Contoso employees, partners, and customers.
- Automate the sign-in experience by using the local AD FS 2.0 servers for AD FS single sign-on (SSO).
- Ensure that a web usage report that contains traffic reports, search reports, and inventory reports can be provided for any site.

The upgraded SharePoint environments must meet the following technical requirements:

- All user profile information that resides in Active Directory must be available in SharePoint Online.
- All sites must be able to share a mail-enabled document library that resides in the cloud.
- The existing line-of-business application must be consumed as an external content type by using Microsoft Business Connectivity Services (BCS).
- The Partner Projects site collection must allow Contoso and Tailspin Toys users to share documents with third-party vendors on an ad-hoc basis, without incurring additional licensing requirements.

QUESTION 1

You are configuring DNS for SharePoint Online.

You need to create the appropriate type of DNS record.

Which type of DNS record should you create?

- A. A DNS CNAME record pointing to sharepoint.contoso.com.
- B. A DNS CNAME record pointing to contoso.sharepoint.com.
- C. A DNS A record pointing to the IP address of the SharePoint Online servers.
- D. A DNS TXT record containing an Office 365 validation code.

Correct Answer: B

Section: [none]

Explanation

Explanation/Reference:

Explanation:

Scenario:

The SharePoint Online URL assigned by Microsoft is <http://contoso.sharepoint.com>.

All SharePoint 2013 features must be available to all users when connecting from inside or outside of the corporate network.

QUESTION 2

You need to configure Office 365 to automate the sign-in experience.

What should you do?

- A. Configure AD FS to convert the domain contoso.com to a federated domain.

- B. Run the New-MsolFederatedDomain-DomainName contoso.com –SupportMultipleDomain Windows PowerShell cmdlet.
- C. Configure AD FS to add the domain contoso.com as an AD FS federated domain and to support multiple domains.
- D. Run the Update-MsolFederatedDomain-DomainName contoso.com - SupportMultipleDomain Windows PowerShell cmdlet.

Correct Answer: B

Section: [none]

Explanation

Explanation/Reference:

Explanation:

Scenario:

All user profile information that resides in Active Directory must be available in SharePoint Online.

The New-MSOLFederatedDomain cmdlet adds a new single sign-on domain (also known as identity-federated domain) to and configures the relying party trust settings between the on-premises ADFS server and Microsoft Online. Due to domain verification requirements, you may need to run this cmdlet several times in order to complete the process of adding the new single sign-on domain.

Reference: <https://docs.microsoft.com/en-us/powershell/msonline/v1/new-msolfederateddomain>

QUESTION 3

You need to meet the requirements for the projects.contoso.com site.

Which two actions should you perform? (Each correct answer presents part of the solution. Choose two.)

- A. Add the Site Mailbox app to the site.
- B. Create a distribution list, and add the project team members to the distribution list.
- C. Add all the project team members to the Members group of the site.
- D. Create an AD security group, and add all the project team members to the security group.
- E. Email-enable a document library app on the site.

Correct Answer: AC

Section: [none]

Explanation

Explanation/Reference:

Explanation:

* From scenario:

Users of the Partner Projects site collection must be able to share content from their Microsoft Outlook clients and receive content from external users who send

email directly to the site

A Site Mailbox is a shared inbox in Exchange Online that all the members of a SharePoint Online site can access. It is implemented in SharePoint Online Preview as what is known as an app. An app is best described as a solution that carries a light footprint and uses standards-based technologies such as HTML5, JavaScript, and OAuth.

The Site Mailbox is accessible from the site in which it is created. It allows access to users who are individually listed in the Owners and Members groups of the site - security groups or distribution lists are not supported by Site Mailboxes. The email address of the site mailbox will be generated automatically from the name of the site.

Site mailboxes are surfaced in Outlook 2013 and give you easy access to the emails and documents for the projects you care about. Site Mailboxes are listed in the Folder Explorer in Outlook 2013 (the rich client), letting you file emails or documents into the shared project space simply by dragging the email, document, or attachment into the site mailbox.

Reference: Site Mailboxes in the new Office
Fighter/DonDatta/Tos:

To Enable a SharePoint 2010 document library to receive emails, follow the following steps:
Ensure the SMTP feature is activated on the SharePoint Server Configure Incoming email settings
Configure a SharePoint Document Library for incoming email
Use the SharePoint Directory Management Service to Create Distribution Groups and Contacts.

Reference: <https://support.office.com/en-us/article/Enable-incoming-e-mail-support-for-a-list-or-library-dcaf44a0-1d9b-451a-84c7-6c52e7db908e>

QUESTION 4

You are configuring an administration connection to SharePoint Online.

You need to instantiate the connection and authenticate to Office 365.

Which Windows PowerShell cmdlet should you run?

- A. Connect-SPOService-Url https://contoso.sharepoint.com -credential admin@contoso.com
- B. Connect-SPOService-Url https://contoso-admin.sharepoint.com -credential admin@contoso.com
- C. Set-SPOTenant -ExternalServicesEnabled -NoAccessRedirectUrl https://contoso.sharepoint.com
- D. Set-SPOSiteGroup -Site https://contoso-admin.sharepoint.com -Identity Administrators

Correct Answer: B

Section: [none]

Explanation

Explanation/Reference:

Explanation:

Scenario:

The SharePoint OnlineAdministration Center URL is https://contoso.admin.sharepoint.com.

The user name for the Contoso Office 365 administrator is admin@contoso.com.

QUESTION 5

You need to display the required web usage report(s) for the projects.contoso.com site.

What should you do?

- A. Display the Unified Logging Service (ULS) logs.
- B. Display usage reports created by using Microsoft System Center 2012 - Operations Manager.
- C. In Central Administration, on an on-premise SharePoint server, navigate to the Web Analytics reports.
- D. Navigate to the site, and then replace Pages/Default.aspx in the URL with _layouts/ usagedetails.aspx.

Correct Answer: D

Section: [none]

Explanation

Explanation/Reference:

Explanation:

Scenario:

Ensure that a web usage report that contains traffic reports, search reports, and inventory reports can beprovided for any site.

QUESTION 6

You are preparing to upgrade the Partner Projects site collection.

You need to perform the prerequisite task.



<https://www.gratisexam.com/>

Which Windows PowerShell cmdlet should you run?

- A. Invoke-PolicyEvaluation

<https://www.gratisexam.com/>

- B. Request-SPOUpgradeEvaluationSite
- C. Start-OrganizationUpgrade
- D. Upgrade SPOSite

Correct Answer: B

Section: [none]

Explanation

Explanation/Reference:

Explanation:

Scenario:

Before upgrading the Partner Projects site collection, create a duplicate, upgraded copy of the site for review and verification purposes.

QUESTION 7

You plan to set up an external list to work with the existing line-of-business application in the cloud.

You need to upload a configuration file to SharePoint Online to enable communication with the external data.

Which configuration file should you upload?

- A. A Microsoft Business Connectivity Services (BCS) resource file
- B. A Microsoft Business Data Connectivity (BDC) service model file that specifies a LobSystemInstance
- C. A SharePoint trust configuration file that specifies permissions
- D. A comma-separated OData definition file that specifies instance permissions

Correct Answer: B

Section: [none]

Explanation

Explanation/Reference:

Explanation:

Scenario:

An existing line-of-business application provides an OData service that is hosted in Microsoft Windows Azure SQL Database.

The existing line-of-business application must be consumed as an external content type by using Microsoft Business Connectivity Services (BCS).

Question Set 1

QUESTION 1

You are managing a SharePoint farm in an Active Directory Domain Services (AD DS) domain.

You need to configure a service account to use domain credentials.

What should you do first?

- A. Configure the service account to use a domain user account.
- B. Register the domain credentials in the Farm Administrators group.
- C. Configure the service account to use a local user account.
- D. Register the domain credentials as a SharePoint managed account.

Correct Answer: D

Section: [none]

Explanation

Explanation/Reference:

QUESTION 2

A company named Contoso, Ltd. has a SharePoint farm. The farm has one Search service application configured. The Search service application contains five crawl databases, all of which contain content.

Contoso plans to crawl knowledge base content from its partner company Litware, Inc. The knowledge base content must be stored in a dedicated crawl database.

You need to configure crawling.

What should you do?

- A. Add a crawl database that contains the Litware knowledge base to the existing Search service application.
- B. Provision a new Search service application. Configure the service application to crawl the Litware knowledge base content.
- C. Set the MaxCrawlDatabase parameter to 6.
- D. Create a dedicated Microsoft SQL Server instance for the Litware crawl database.

Correct Answer: B

Section: [none]

Explanation

Explanation/Reference:

Explanation:

Farm has 1 Search Service Application configured

MrDonivan (US, 30.06.13):

Dump states to create a dedicated SQL instance. I believe this is wrong, as it will not resolve the issue that the current Search Service App is already at its hard boundary of 5 content databases. Limit of 5 is detailed here: (<http://technet.microsoft.com/en-us/library/cc262787.aspx#ContentDB>) This one item then also eliminates other options of "set MaxCrawlDatabase parameter to 6" and "add crawl database to contains the litware knowledgebase content" Only option that remains is:

Provision a new SearchServiceApplicaiton and configure it to crawl the Litware KB content.

The maximum number of crawl databases is 5 per Search service application so we need another Search service application.

This maximum limit is increased to 15 with an Office 2013 update but the question doesn't mention that this update is installed so we have to assume the question was written before the update was released.

Crawl databases	15 per Search service application	Supported
-----------------	-----------------------------------	-----------

Recommended value for crawl databases is 5 per search service application.

Reference: <http://social.technet.microsoft.com/wiki/contents/articles/25615.sharepoint-2013-limitations-boundaries.aspx>

QUESTION 3

A company uses SharePoint 2013 Server as its intranet portal. The Marketing department publishes many news articles, press releases, and corporate communications to the intranet home page.

You need to ensure that the Marketing department pages do not impact intranet performance.

Which two actions should you perform? (Each correct answer presents part of the solution. Choose two.)

- A. In Central Administration, set up a User Policy for the Super User and Super Reader accounts.
- B. Configure IIS to use the Super User and Super Reader accounts for caching.
- C. Use the Farm Configuration Wizard to configure the Super User and Super Reader accounts.
- D. Use Windows PowerShell to add the Super User and Super Reader accounts.

Correct Answer: AD

Section: [none]

Explanation

Explanation/Reference:

A: The way to correct this problem is to first create two normal user accounts in AD. These are not service accounts. You could call them domain\superuser and domain\superreader, but of course that's up to you.

The domain\superuser account needs to have a User Policy set for that gives it Full Control to the entire web application.

D: If you are using any type of claims based authentication you will need to use Windows PowerShell. And Windows PowerShell is the hipper more modern and sustainable option anyway.

If you are using classic mode authentication run the following cmdlets on one of your SharePoint servers:

```
$w = Get-SPWebApplication "http://<server>/"
$w.Properties["portalsuperuseraccount"] = "domain\superuser"
$w.Properties["portalsuperreaderaccount"] = "domain\superreader"
$w.Update()
```

If you are using claims based authentication run these cmdlets on one of your SharePoint servers:

```
$w = Get-SPWebApplication "http://<server>/"
$w.Properties["portalsuperuseraccount"] = "i:0#.w|domain\superuser"
$w.Properties["portalsuperreaderaccount"] = "i:0#.w|domain\superreader"
$w.Update()
```

Note:

* If you have a SharePoint Publishing site and you check the event viewer every once in a while you might see the following warning in there:

Object Cache: The super user account utilized by the cache is not configured. This can increase the number of cache misses, which causes the page requests to consume unnecessary system resources.

To configure the account use the following command 'stsadm -o setproperty -propertynameportalsuperuseraccount -propertyvalue account -urlwebappurl'. The account should be any account that has Full Control access to the SharePoint databases but is not an application pool account.

Additional Data:

Current default super user account: SHAREPOINT\system

This means that the cache accounts for your web application aren't properly set and that there will be a lot of cache misses. If a cache miss occurs the page the user requested will have to be build up from scratch again. Files and information will be retrieved from the database and the file system and the page will be rendered. This means an extra hit on your SharePoint and database servers and a slower page load for your end user.

Reference: Resolving "The super user account utilized by the cache is not configured."

QUESTION 4

You are managing a SharePoint farm.

Diagnostic logs are rapidly consuming disk space.

You need to minimize the amount of log data written to the disk.

Which two actions should you perform? (Each correct answer presents part of the solution. Choose two.)

A. Set the log event level to Information.

B. Set the log event level to Verbose.

- C. Set the log trace level to Medium.
- D. Set the log trace level to Verbose.
- E. Set the log event level to Warning.
- F. Set the log trace level to Monitorable.

Correct Answer: EF

Section: [none]

Explanation

Explanation/Reference:

E: Event Levels

Warning, Level ID 50

Information, Level ID: 80

Verbose, Level ID: 100

F: Trace levels:

Monitorable: 15

Medium: 50

Verbose: 100

Note: When using the Unified Logging System (ULS) APIs to define events or trace logs, one of the values you must supply is the ULS level. Levels are settings that indicate the severity of an event or trace and are also used for throttling, to prevent repetitive information from flooding the log files.

Reference: [https://msdn.microsoft.com/en-us/library/office/ff604025\(v=office.14\).aspx](https://msdn.microsoft.com/en-us/library/office/ff604025(v=office.14).aspx)

QUESTION 5

A company's SharePoint environment contains three web applications. The root site collections of the web applications host the company intranet site, My Sites, and a Document Center.

SharePoint is configured to restrict the default file types, which prevents users from uploading Microsoft Outlook Personal Folder (.pst) files.

The company plans to require employees to maintain copies of their .pst files in their My Site libraries.

You need to ensure that employees can upload .pst files to My Site libraries.

In which location should you remove .pst files from the blocked file types?

- A. The File Types area of the Search service application section of Central Administration
- B. The General Security page in the site settings for the site collection
- C. The Blocked File Types page in the site settings for the site collection

D. The General Security section of the Security page of Central Administration

Correct Answer: D

Section: [none]

Explanation

Explanation/Reference:

QUESTION 6

Contoso, Ltd. recently merged with Fabrikam, Inc. Each company has an Active Directory Domain Services (AD DS) domain. You are managing a SharePoint farm in the contoso.com domain.

You need to enable users in the fabrikam.com domain to access the Contoso SharePoint farm and prevent users in the contoso.com domain from accessing resources in the fabrikam.com domain.

Which two actions should you perform? (Each correct answer presents part of the solution. Choose two.)

- A. Configure a two-way forest trust from the fabrikam.com domain to the contoso.com domain.
- B. Add the fabrikam.com AD security groups to the SharePoint farm.
- C. Configure a two-way forest trust from the contoso.com domain to the fabrikam.com domain.
- D. Add the contoso.com AD security groups to the SharePoint farm.
- E. Configure a one-way forest trust from the fabrikam.com domain to the contoso.com domain.
- F. Configure a one-way forest trust from the contoso.com domain to the fabrikam.com domain.

Correct Answer: BF

Section: [none]

Explanation

Explanation/Reference:

F: This is a one-way trust.

The resource is in the Contoso domain. Contoso need to trust Fabrikam.

B: The users in Fabrikam need to have access to Contoso resources. The fabrikam.com AD security groups should be added to the SharePoint Farm.

QUESTION 7

You are configuring a query rule for a site in a SharePoint site collection.

You need to promote specific search results during a defined date range only.

Which two actions should you perform? (Each correct answer presents part of the solution. Choose two.)

- A. Configure actions for the rule.
- B. Configure query conditions for the rule.
- C. Add the rule with a source type.
- D. Add the rule without a source type.
- E. Configure publishing options for the rule.

Correct Answer: AE

Section: [none]

Explanation

Explanation/Reference:

Without using any custom code, Search service application administrators, site collection administrators, and site owners can help searches respond to the intent of users by creating query rules. In a query rule, you specify conditions and correlated actions. When a query meets the conditions in a query rule, the search system performs the actions specified in the rule to improve the relevance of the search results, such as by narrowing results or changing the order in which results are displayed. For example, a query rule condition could be that a term in a query matches a particular term in a SharePoint term set, or that a query is frequently performed on a particular result source in a search system, such as videos. When the query rule condition is satisfied, a correlated action could be to show a specific item at the top of the search results.

You can configure query rules for one or more result sources, and you can specify the time period during which the query rule is active.

E: To make the query rule active during a particular time period, click **Publishing**, and then specify the period.

Reference: <https://technet.microsoft.com/en-us/library/jj871676.aspx>

QUESTION 8

A company is planning to upgrade from SharePoint 2010 to SharePoint 2013.

You need to find out the web traffic capacity of the SharePoint farm by using a Microsoft Visual Studio Team System project file.

Which tool should you use?

- A. Network Monitor
- B. SharePoint Health Analyzer
- C. SharePoint Diagnostic Studio
- D. Load Testing Kit (LTK)

Correct Answer: D

Section: [none]

Explanation

Explanation/Reference:

QUESTION 9

You install SharePoint Server in a three-tiered server farm that meets the minimum requirements for SharePoint 2013 and surrounding technologies. The content databases will reside on Fibre Channel drives in a storage area network (SAN). The backup solution will utilize SAN snapshots.

You are estimating storage requirements. You plan to migrate 6 TB of current content from file shares to SharePoint.

You need to choose the content database size that will optimize performance, minimize administrative overhead, and minimize the number of content databases.

Which content database size should you choose?

- A. 100 GB
- B. 200 GB
- C. 3 TB
- D. 6 TB

Correct Answer: C

Section: [none]

Explanation

Explanation/Reference:

Explanation:

Microsoft recommends content database size limits of 200GB. However, the main reason for this is for ease of management when it comes to backing up and restoring the content databases using SQL Server backups. In this question, the backups are handled by the SAN using SAN snapshots so that is not an issue. A 200GB database size would also mean 30 content databases and therefore 30 site collections. This does not meet the requirements of minimizing administrative overhead or minimizing the number of content databases. Two 3 TBdatabases does meet those requirements. Over 4TB is not recommended which excludes answer D.

QUESTION 10

A web application is configured in a SharePoint environment.

A user receives an application error message that includes a correlation ID.

You need to find out the cause of the error.

Which two actions can you perform to achieve this goal? (Each correct answer presents a complete solution. Choose two.)

- A. Locate the correlation ID in the Security event log.
- B. Enable the Developer Dashboard and review the content.
- C. Locate the correlation ID in the Unified Logging Service (ULS).
- D. Locate the correlation ID in the System event log.

Correct Answer: BC

Section: [none]

Explanation

Explanation/Reference:

Explanation:

Windows Event Logs

These are the events that you are used to viewing in the Windows Event Viewer. While SharePoint 2010 will write to its own trace logs, it also writes events here as well. You can configure how much information SharePoint writes to the Windows Event Logs in the same way you can control how much it writes to the trace logs. Enabling event log throttling (In Central Administration, under Monitoring > "Configure diagnostic logging"), SharePoint will only write events periodically, telling you the event is still being throttled. This keeps your Windows Event Logs from being overrun by the same message.

B: The Developer Dashboard

You aren't always handed the correlation ID all tied up with a bow. Sometimes the page will render, but there are problems with individual web parts. In those cases, you can use the Developer Dashboard to get the correlation ID and hunt down the problem. This dashboard is loaded at the bottom of your requested web page.

The user browsing the page must have the AddAndCustomizePages permission (site collection admins and users in the Owner group, by default) to see the Developer Dashboard and it must be enabled in your farm.

Incorrect:

C: ULS logs errors, but you

C: The actual details of your error will be in SharePoint's ULS log files. The key here is the correlation ID that has been listed out. You have to parse through the appropriate log file and filter down to log events that use that correlation ID. Then, within that group of items, there should be more detailed error messages about what happened.

Where to find ULS log files

They're in SharePoint's hive. Since you're using 2013, they will be in the 15 hive, which is located at:

C:\Program Files\Common Files\Microsoft Shared\Web Server Extensions\15\Logs

D: The correlation ID is basically a unique error identifier (GUID) Microsoft displays on an error screen in SharePoint - and it is very useful. This error screen will also include the date/time of the error. The correlation ID is attached to every event related to the error you experienced within the SharePoint event log.

Note:

* Correlation ID

The correlation ID is a globally unique identifier GUID that is assigned to each conversation a user or process has with SharePoint.

The correlation ID is considered by many administrators to be one of the best new features in SharePoint 2010.

When an error occurs, an administrator can use the correlation ID to track down all the events in the trace logs that pertain to the conversation where the problem

occurred.

QUESTION 11

A company has a SharePoint environment that consists of two web applications. The first web application is used as the corporate intranet site, and the second web application hosts several custom apps. The custom apps use Microsoft Business Connectivity Services (BCS) Web Parts to retrieve data from external systems.

The home page of the second web application displays information from three custom apps and renders slowly.

You need to identify the custom app that is causing the slow response times.

Which tool should you use?

- A. SharePoint Web Analytics service application
- B. SharePoint audit log reports
- C. SharePoint Health Analyzer
- D. Developer Dashboard

Correct Answer: C

Section: [none]

Explanation

Explanation/Reference:

Explanation:

The Web Analytics Service is deprecated.

garfield_01 (DE, 17.07.13):

Web Analytics in SharePoint Server 2010

Description: Web Analytics in SharePoint Server 2010 has been discontinued and is not available in SharePoint 2013. Analytics processing for SharePoint 2013 is now a component of the Search service.

Reference: <https://technet.microsoft.com/en-us/library/ff607742.aspx>

QUESTION 12

You are managing a SharePoint farm.

The SharePoint databases are configured to run on a dedicated instance of Microsoft SQL Server 2008 R2 Service Pack 1.

You need to optimize query executions.

What should you do?

- A. Move the SharePoint databases to a RAID 10 volume.
- B. Move the SharePoint databases to a RAID 5 volume.
- C. Set the maximum degree of parallelism for SQL Server instances to 4.
- D. Set the maximum degree of parallelism for SQL Server instances to 0.

Correct Answer: A

Section: [none]

Explanation

Explanation/Reference:

Explanation:

Setting the maximum degree of parallelism for SQL Server instances to 1 is recommended to optimize query executions. However, that is not an option in this question. Therefore, the only other way to optimize query executions is to put the SharePoint databases on the fastest storage possible, in this case RAID 10.

QUESTION 13

You are managing a site collection in a SharePoint farm.

You need to configure the minimum level of permissions necessary for users to manage lists in the site collection.

What permission level should you configure?

- A. Full Control
- B. Create
- C. Design
- D. Contribute

Correct Answer: C

Section: [none]

Explanation

Explanation/Reference:

Explanation:

To manage lists, you need the Manage Lists permission. The Managed Lists permission is included in the following permission levels:

- Edit
- Design
- Full Control
- Manage Hierarchy

In this question, the minimum permission level that includes the Manage Lists permission is Design.

QUESTION 14

You are managing a SharePoint farm.

You need to collect information about the health of a web application.

What should you use?

- A. SharePoint Health Analyzer
- B. Windows Management Instrumentation (WMI)
- C. SharePoint Developer Dashboard
- D. timer jobs

Correct Answer: A

Section: [none]

Explanation

Explanation/Reference:

QUESTION 15

You are the term store manager of a SharePoint environment.

You need to make term sets available across the entire farm. You must ensure that users can reuse terms but not edit terms.

Which two actions should you perform? (Each correct answer presents part of the solution. Choose two.)

- A. Prohibit the use of keywords other than those in a specific term set.
- B. Create a global term set.
- C. Enable term pinning.
- D. Prohibit grid editing in the Datasheet view.
- E. Create a local term set.

Correct Answer: AB

Section: [none]

Explanation

Explanation/Reference:

Note:

Anyone can add a new term to an open term set. Only people who were identified as contributors to a term set group can add terms to a closed term set in the group. For example, a term set that represents cost centers would probably be closed. A term set that represents contributors to a charity might be open.

On global term set see step 8) below.

Make a term set available to other site collections

After you create a term set on the authoring site collection, you have to make it available to publishing site collections. You can make a term set available to all site collections or to specific site collections.

To make a term set available to all site collections:

- Verify that the user account that performs this procedure is a member of the Owners SharePoint group on the authoring site that contains the catalog.
- On the authoring site, on the **Settings** menu, click **Site Settings**.
- On the **Site Settings** page, in the **Site Administration** section, click **Term store management**. If the user that performs this procedure is already a member of the Term Store Administrators group, you can skip to step 7.
- In the **Term Store Management Tool**, verify that **Managed Metadata Service** is selected.
- In the **Term Store Administrator** section, type one or more user names.
- Click **Save**.
- Right-click **Managed Metadata Service**, and then select **New Group**.
- Type the name of the global term set that you want to create, and then press **Enter**.
- Refresh the page.
- Right-click the term set that you want to make available to all site collections, and then click **Move Term Set**.
- In the **Term Set Move** dialog box, click the global term set that you want to move the term set to, and then click **OK**.
- Refresh the page.

Reference: <https://technet.microsoft.com/en-us/library/jj656774.aspx>

QUESTION 16

A company is planning to deploy My Sites to its 25,000 employees. The company will maintain dedicated content databases for the storage of personal site collections.

You need to create the minimum number of content databases required to support the My Sites.

What should you do?

- A. Create three content databases. Set the value of the WarningSiteCount property of each content database to 10,000.
- B. Create one content database. Set the value of the WarningSiteCount property of the content database to 25,000.
- C. Create one content database. Set the value of the MaxSiteCount property of the content database to 25,000.
- D. Create three content databases. Set the value of the MaxSiteCount property of each content database to 10,000.
- E. Create five content databases. Set the value of the WarningSiteCount property of each content database to 5,000.

F. Create five content databases. Set the value of the MaxSiteCount property of each content database to 5,000.

Correct Answer: D

Section: [none]

Explanation

Explanation/Reference:

Explanation:

Site collections per content database: 10,000 maximum (2,500 non-Personal site collections and 7,500 Personal Sites, or 10,000 Personal Sites alone) We strongly recommended limiting the number of site collections in a content database to 5,000. However, up to 10,000 site collections in a database are supported.

SPContentDatabase.WarningSiteCount property - by default is set to 2000.

SPContentDatabase.MaximumSiteCount property - by default is set to 5000.

Reference: <https://technet.microsoft.com/en-us/library/cc262787.aspx>

QUESTION 17

You are managing a SharePoint farm. The SharePoint databases are configured to run on a dedicated instance of Microsoft SQL Server 2008 R2 Service Pack 1.

You need to optimize query executions.



<https://www.gratisexam.com/>

What should you do?

- A. Set the maximum degree of parallelism for SQL Server instances to 4.
- B. Set the maximum degree of parallelism for SQL Server instances to 1.
- C. Move the master database to a RAID 5 volume.
- D. Set the maximum degree of parallelism for SQL Server instances to 32.

Correct Answer: B

Section: [none]

Explanation

Explanation/Reference:

Explanation:

Set max degree of parallelism (MAXDOP) to 1 for instances of SQL Server that host SharePoint databases to make sure that a single SQL Server process serves each request.

Important:

Setting the max degree of parallelism to any other number can cause a less optimal query plan to be used that will decrease SharePoint Server 2013 performance.

References: [http://technet.microsoft.com/en-us/library/hh292622\(v=office.15\).aspx](http://technet.microsoft.com/en-us/library/hh292622(v=office.15).aspx)

QUESTION 18

You are managing a site collection in a SharePoint farm.

You need to configure the minimum level of permissions necessary for users to manage lists in the site collection.

What permission level should you configure?

- A. View Only
- B. Edit
- C. Full Control
- D. Read

Correct Answer: B

Section: [none]

Explanation

Explanation/Reference:

Explanation:

To manage lists, you need the Manage Lists permission. The Managed Lists permission is included in the following permission levels:

- Edit
- Design
- Full Control
- Manage Hierarchy

In this question, the minimum permission level that includes the Manage Lists permission is Edit.

QUESTION 19

You are managing a SharePoint environment. All SharePoint databases reside on servers that run Microsoft SQL Server 2012.

You observe an increase in the consumption of disk space by the SharePoint configuration database.

You need to minimize disk space usage. Which recovery model should you set?

- A. Transactional
- B. Full
- C. Bulk-logged
- D. Simple

Correct Answer: D

Section: [none]

Explanation

Explanation/Reference:

Simple would take the least space.

<https://msdn.microsoft.com/en-us/library/ms189275.aspx>

QUESTION 20

A SharePoint environment contains a single web application at http://web01.

You create a site collection under the web application. The site collection has the URL http://sharepoint.contoso.com.

You need to ensure that the site collection is also accessible at http://intranet.contoso.com.

What should you do?

- A. Add intranet.contoso.com as an alternate access mapping for the web application.
- B. Extend the web application and add intranet.contoso.com to the Intranet Zone.
- C. Run the Set-SPSiteUrl Windows PowerShell cmdlet.
- D. Run the New-SPSite Windows PowerShell cmdlet.

Correct Answer: C

Section: [none]

Explanation

Explanation/Reference:

Explanation:

When you create a new hostname site collection, the default alternate access mappings will still exist but cannot be used. Use Windows PowerShell commands to manage URL mappings for host-named site collections.

Add a mapping to an existing site:

Set-SPSiteUrl (Get-SPSite 'http://teams.contoso.com') -Url 'http://teamsites.contoso.com' -ZoneIntranet Reference: Host-named site collections versus path-based

site collections

QUESTION 21

You are managing a site collection in a SharePoint farm.

You need to configure the minimum level of permissions necessary for users to manage lists in the site collection

What permission level should you configure?

- A. Contribute
- B. View Only
- C. Edit
- D. Read

Correct Answer: C

Section: [none]

Explanation

Explanation/Reference:

Explanation:

To manage lists, you need the Manage Lists permission. The Managed Lists permission is included in the following permission levels:

- Edit
- Design
- Full Control
- Manage Hierarchy

In this question, the minimum permission level that includes the Manage Lists permission is Edit.

QUESTION 22

You are managing a SharePoint farm. The SharePoint databases are configured to run on a dedicated instance of Microsoft SQL Server 2008 R2 Service Pack 1.

You need to optimize query executions.

What should you do?

- A. Set the maximum degree of parallelism for SQL Server instances to 0.
- B. Move the master database to a RAID 10 volume.
- C. Set the maximum degree of parallelism for SQL Server instances to 1.
- D. Set the maximum degree of parallelism for SQL Server instances to 32.

Correct Answer: C

Section: [none]

Explanation

Explanation/Reference:

Explanation:

Set max degree of parallelism (MAXDOP) to 1 for instances of SQL Server that host SharePoint databases to make sure that a single SQL Server process serves each request.

Important:

Setting the max degree of parallelism to any other number can cause a less optimal query plan to be used that will decrease SharePoint Server 2013 performance.

References: [http://technet.microsoft.com/en-us/library/hh292622\(v=office.15\).aspx](http://technet.microsoft.com/en-us/library/hh292622(v=office.15).aspx)

QUESTION 23

A SharePoint farm has a very large search index.

Users report that search results are too broad.

You need to ensure that properties can be used to refine search results.

Which two options should you configure? (Each correct answer presents part of the solution. Choose two.)

- A. Searchable
- B. Queryable
- C. Complete Matching
- D. Retrievable
- E. Refinable
- F. Sortable

Correct Answer: BE

Section: [none]

Explanation

Explanation/Reference:

Explanation:

To create a managed property, add type code to the name, and enable a managed property as a refiner

- Verify that the user account that performs this procedure is an administrator of the Search service application.

- In Central Administration, in the **Application Management** section, click **Manage service applications**.
- On the **Manage Service Applications** page, click the Search service application in which you want to create a managed property.
- On the Search Administration page, in the Quick Launch, under **Queries and Results**, click **Search Schema**.
- On the **Managed Properties** page, click **New Managed Property**.
- On the **New Managed Property** page, in the **Property name** box, in the **Name and description** section, type the name of the new managed property, followed by the appropriate type code. For an overview of type codes, see [Type codes](#).
- In the **Type** section, select the appropriate data type.
- In the **Main characteristics** section, set the following selections:
 - **Queryable**
 - **Refinable: Yes - active or Yes - latent**

You can also specify additional settings in this section.

- In the **Mappings to crawled properties** section, click **Add a mapping**.
- In the **Crawled property selection** dialog box, find the crawled property that you want to map to the managed property in the list, or search for it by typing the name of the crawled property in the box, and then clicking **Find**.

Reference: Map a crawled property to a refinable managed property in SharePoint site collection administration

Explanation: B, D: The search index consists of a set of files in folders on a server. The content processing component processes crawled items, uses the search schema to map crawled properties to managed properties, and translates the managed properties into a format that is written to the search index. In addition to various full-text indexes, there are separate indexes of the managed properties that are marked as retrievable and those that are marked as queryable.

Note:

* **Queryable**

Enables querying against the specific managed property. The managed property name must be included in the query, either specified in the query itself or included in the query programmatically.

* **Retrievable**

Enables the content of this managed property to be returned in search results. Enable this setting for managed properties that are relevant to present in search results.

* Settings on the managed properties determine how content is saved in the search index.

Reference: <https://technet.microsoft.com/en-us/library/jj219669.aspx>

You need to ensure that properties can be used to refine search results.

QUESTION 24

You are managing a SharePoint farm in an Active Directory Domain Services (AD DS) forest.

The forest contains two domains named `americas.contoso.com` and `europe.contoso.com`. A single SharePoint farm is located in the `americas.contoso.com` domain and uses Kerberos authentication.

Users in the `europe.contoso.com` domain cannot access the Excel Services application in the `americas.contoso.com` domain when using an external data source.

You need to ensure that users in the europe.contoso.com domain can use the Excel Services application with external data sources.

What should you do?

- A. Deploy a SharePoint farm in the europe.contoso.com domain.
- B. Configure Kerberos constrained delegation.
- C. Configure basic Kerberos delegation.
- D. Configure anonymous access in the SharePoint farm.

Correct Answer: B

Section: [none]

Explanation

Explanation/Reference:

Explanation:

Excel Services accesses external datasources by using a delegated Windows identity. Consequently, external data sources must reside within the same domain as the SharePoint Server 2010 farm or Excel Services must be configured to use the Secure Store Service. If the Secure Store Service is not used and external data sources do not reside within the same domain, authentication to the external data sources will fail.

References:

[https://technet.microsoft.com/en-us/library/ff604007\(v=office.14\)](https://technet.microsoft.com/en-us/library/ff604007(v=office.14))

QUESTION 25

A company's SharePoint environment contains three web applications.

The company must record the following information for each document in any of the three web applications:

- The date and time at which the document was last reviewed.
- Additional custom date and time information as requirements are identified.

You have the following requirements:

- Ensure that the current information is available when searching content and for refining search results.
- Ensure that the additional custom date and time information can be assigned to content in all web applications.
- Ensure that SharePoint users who are not farm administrators can record additional date and time information as required.

You need to meet the requirements.

What should you do?

- A. Create a column of data type Date and Time in a document library in each site collection.

- B. In Central Administration, create a term set with a term of data type Date and Time.
- C. Create a content type that uses a custom field of data type Date and Time in each site collection.
- D. Create a site column of data type Date and Time in each site collection.

Correct Answer: B

Section: [none]

Explanation

Explanation/Reference:

QUESTION 26

You are managing a SharePoint farm. The SharePoint databases are configured to run on a dedicated instance of Microsoft SQL Server 2008 R2 Service Pack 1.

You need to optimize query executions.

What should you do?

- A. Move the master database to a RAID 10 volume.
- B. Set the maximum degree of parallelism for SQL Server instances to 0.
- C. Set the maximum degree of parallelism for SQL Server instances to 4.
- D. Set the maximum degree of parallelism for SQL Server instances to 1.

Correct Answer: D

Section: [none]

Explanation

Explanation/Reference:

Explanation:

Set max degree of parallelism (MAXDOP) to 1 for instances of SQL Server that host SharePoint databases to make sure that a single SQL Server process serves each request.

Important:

Setting the max degree of parallelism to any other number can cause a less optimal query plan to be used that will decrease SharePoint Server 2013 performance.

References: [http://technet.microsoft.com/en-us/library/hh292622\(v=office.15\).aspx](http://technet.microsoft.com/en-us/library/hh292622(v=office.15).aspx)

QUESTION 27

You are managing SharePoint Online site collections.

You need to assign the minimum permission level necessary to create subsites.

Which permission level should you assign?

- A. Approve
- B. Design
- C. Manage Hierarchy
- D. Contribute

Correct Answer: C

Section: [none]

Explanation

Explanation/Reference:

Explanation:

If you use a site template other than the team site template, you will see a different list of default SharePoint permission levels. For example, the following table shows additional permission levels provided with the publishing template.

Permission level	Description	Permissions included by default
Restricted Read	View pages and documents. For publishing sites only.	<ul style="list-style-type: none"> • View Items • Open Items • View Pages • Open
Approve	Edit and approve pages, list items, and documents. For publishing sites only.	Contribute permissions, plus: <ul style="list-style-type: none"> • Override List Behaviors • Approve Items
Manage Hierarchy	Create sites; edit pages, list items, and documents, and change site permissions. For Publishing sites only.	Design permissions minus the Approve Items, Apply Themes and Borders, and Apply Style Sheets permissions, plus: <ul style="list-style-type: none"> • Manage permissions • View Web Analytics Data • Create Subsites • Manage Alerts • Enumerate Permissions • Manage Web Site

Reference: <https://technet.microsoft.com/en-us/library/cc721640.aspx>

QUESTION 28

A SharePoint farm includes two front-end web servers, one application server, and two clustered servers that run Microsoft SQL Server. The SharePoint Foundation

Web Application service is not running on the application server.

You plan to configure the SharePoint farm to receive and store email messages and email message attachments in libraries.

You need to ensure that users can send email messages and attachments directly to libraries across the entire farm. You must accomplish this goal by using the least amount of effort.

Which two actions should you perform? (Each correct answer presents part of the solution. Choose two.)

- A. Install and configure the Simple Mail Transfer Protocol (SMTP) service on each application server.
- B. Install and configure the Simple Mail Transfer Protocol (SMTP) service on each front-end web server.
- C. Enable and start the SharePoint Foundation Web Application service on each application server.
- D. Enable incoming email by using the Automatic settings mode.
- E. Enable and start the SharePoint Foundation Web Application service on each front-end web server.
- F. Enable incoming email by using the Advanced settings mode.

Correct Answer: BF

Section: [none]

Explanation

Explanation/Reference:

B (not A):

* Incoming email for SharePoint 2013 uses the SMTP service. You can use the SMTP service in one of two ways. You can install the SMTP service on one or more servers in the farm, or administrators can provide an email drop folder for email that is forwarded from the service on another server.

* If you are not using a drop folder for email, the SMTP service must be installed on every front-end web server in the farm that you want to configure for incoming email.

F (not D):

* The basic scenario applies to a single-server farm environment and is recommended if you want to use default settings. The advanced scenario applies to a single-server farm or a multiple-server farm and contains several advanced options from which to choose

* To configure incoming email in an advanced scenario

- Verify that the user account that is performing this procedure is a member of the Administrators group on the server that is running the SharePoint Central Administration website.
- In Central Administration, click **System Settings**.
- On the System Settings page, in the **E-Mail and Text Messages (SMS)** section, click **Configure incoming e-mail settings**.
- If you want to enable sites on this server to receive email, on the Configure Incoming E-mail Settings page, in the **Enable Incoming E-Mail** section, click **Yes**.
- Select the **Advanced** settings mode.

etc.

Not C, not E: The SharePoint Foundation Web Application service is not running on the application server.

Reference: <https://technet.microsoft.com/en-us/library/cc262947.aspx>

QUESTION 29

You are managing a site collection in a SharePoint farm.

You need to configure the minimum level of permissions necessary for users to manage lists in the site collection.

What permission level should you configure?

- A. Contribute
- B. Read
- C. Full Control
- D. Design

Correct Answer: D

Section: [none]

Explanation

Explanation/Reference:

Explanation:

To manage lists, you need the Manage Lists permission. The Managed Lists permission is included in the following permission levels:

- Edit
- Design
- Full Control
- Manage Hierarchy

In this question, the minimum permission level that includes the Manage Lists permission is Edit.

QUESTION 30

You are managing a SharePoint farm.

You need to enable friendly URLs for a term set.

What should you configure?

- A. Term set tagging
- B. Managed navigation
- C. Custom properties
- D. Search refinement

Correct Answer: B

Section: [none]

Explanation

Explanation/Reference:

QUESTION 31

You are managing a SharePoint farm. The SharePoint databases are configured to run on a dedicated instance of Microsoft SQL Server 2008 R2 Service Pack 1.

You need to optimize query executions.

What should you do?

- A. Move the master database to a RAID 10 volume.
- B. Move the SharePoint databases to a RAID 10 volume.
- C. Set the maximum degree of parallelism for SQL Server instances to 0.
- D. Move the master database to a RAID 5 volume.

Correct Answer: B

Section: [none]

Explanation

Explanation/Reference:

Explanation:

Setting the maximum degree of parallelism for SQL Server instances to 1 is recommended to optimize query executions. However, that is not an option in this question. Therefore, the only other way to optimize query executions is to put the SharePoint databases on the fastest storage possible, in this case RAID 10.

QUESTION 32

You are managing a site collection in a SharePoint farm.

You need to configure the minimum level of permissions necessary for users to manage lists in the site collection.

What permission level should you configure?

- A. Limited Access
- B. View Only
- C. Edit
- D. Create

Correct Answer: C

Section: [none]

Explanation

Explanation/Reference:

Explanation:

To manage lists, you need the Manage Lists permission. The Managed Lists permission is included in the following permission levels:

- Edit
- Design
- Full Control
- Manage Hierarchy

In this question, the minimum permission level that includes the Manage Lists permission is Edit.

QUESTION 33

You are the farm administrator for a single-server SharePoint 2010 Foundation environment.

The company plans to upgrade to SharePoint 2013 Foundation.

You need to ensure that the existing server meets the minimum requirements.

Which three requirements must you meet? (Each correct answer presents part of the solution. Choose three.)

- A. 64-bit edition of Windows Server 2008 SP2
- B. 64-bit processor
- C. 8 GB of RAM
- D. 80 GB of free disk space for the system drive
- E. 64-bit edition of SQL Server 2008

Correct Answer: BCD

Section: [none]

Explanation

Explanation/Reference:

Installation Scenario

Single server with a built-in database or single server that uses SQL Server

Development or evaluation installation of SharePoint Server 2013 or SharePoint Foundation 2013 with the minimum recommended services for development environments.

Requirement:

B: 64-bit, 4 cores Processor

C: 8 GB RAM
D: 80 GB for system drive

Reference: <https://technet.microsoft.com/en-us/library/cc262485.aspx>

QUESTION 34

You are managing a site collection in a SharePoint farm.

You need to configure the minimum level of permissions necessary for users to manage lists in the site collection.

What permission level should you configure?

- A. Edit
- B. Contribute
- C. Read
- D. Limited Access

Correct Answer: A

Section: [none]

Explanation

Explanation/Reference:

Explanation:

To manage lists, you need the Manage Lists permission. The Managed Lists permission is included in the following permission levels:

- Edit
- Design
- Full Control
- Manage Hierarchy

In this question, the minimum permission level that includes the Manage Lists permission is Edit.

QUESTION 35

Your company has a SharePoint Server 2013 server farm that is integrated with Microsoft SharePoint Online.

Users report that when they connect to SharePoint Online and perform a search, they only see search results from SharePoint Online.

You need to ensure that when the users search from SharePoint Online, the results are displayed from the SharePoint Server 2013 farm and from SharePoint Online.

What should you do?

- A. From SharePoint Online, create a content source and a search scope.
- B. From SharePoint Online, create a result source and a query rule.
- C. From the SharePoint Server 2013 farm, create a result source and a query rule.
- D. From the SharePoint Server 2013 farm, create a content source and a search scope.

Correct Answer: B

Section: [none]

Explanation

Explanation/Reference:

Explanation:

Step 1: Create a result source that defines how to get search results from the SharePoint Server 2013 deployment. In this procedure, you create a result source in SharePoint Online. This result source is a definition that specifies SharePoint Server 2013 as a provider to get search results from.

Step 2: Create a query rule to turn on hybrid search results in SharePoint Online

Reference: <https://technet.microsoft.com/en-us/library/dn197174.aspx>

QUESTION 36

You plan to deploy a SharePoint Server 2013 server farm to a test environment on a single server. The server has the following configurations:

- A 64-bit processor that has four cores
- Windows Server 2008 Enterprise
- 8 GB of physical memory
- A 2-TB hard disk

You need to ensure that you can deploy the SharePoint Server 2013 farm to the server.

What should you do?

- A. Upgrade the operating system.
- B. Replace the processor.
- C. Add more physical memory.
- D. Add another hard disk drive.

Correct Answer: A

Section: [none]

Explanation

Explanation/Reference:

Need The 64-bit edition of Windows Server 2008 R2 Service Pack 1 (SP1) Standard, Enterprise, or Datacenter or the 64-bit edition of Windows Server 2012 Standard or Datacenter

QUESTION 37

You plan to deploy a SharePoint Server 2013 server farm.

You need to create four site collections. The site collections must meet the requirements described in the following table.

Site collection name	User must be able to create their own workflows by using Microsoft SharePoint Designer	The site collection administrator must be able to customize master pages by using Microsoft SharePoint Designer
SiteCol1	Yes	No
SiteCol2	Yes	Yes
SiteCol3	No	Yes
SiteCol4	Yes	Yes

What is the minimum number of web applications required to host the site collection?

- A. 1
- B. 2
- C. 3
- D. 4

Correct Answer: C

Section: [none]

Explanation

Explanation/Reference:

Explanation:

* You can manage how Microsoft SharePoint Designer is used at two levels:

/ Web application level which is applicable to all site collections in the web application and to the site collection administrators.

/ Site collection level (managed by site collection administrators) which is applicable to all sites in the collection along with the Designers and Owners group.

*Enable SharePoint Designer

Enable or disable SharePoint Designer 2010 use for an entire application or site collection. If you want to ensure that all designers and owners within a specific site collection can use SharePoint Designer 2010, enable this setting at the site collection level.

Here are the options for managing SharePoint Designer at the Web Application Level:

SharePoint Designer Settings

Allow SharePoint Designer to be used in this Web Application

Specify whether to allow users to edit sites in this Web Application using SharePoint Designer.

☒ Enable SharePoint Designer




Allow Site Collection

Administrators to Detach Pages from the Site Template

Specify whether to allow site administrators to detach pages from the original site definition using SharePoint Designer.

☒ Enable Detaching Pages from the Site Definition



Allow Site Collection

Administrators to Customize Master Pages and Layout Pages

Specify whether to allow site administrators to customize Master Pages and Layout Pages using SharePoint Designer.

☒ Enable Customizing Master Pages and Layout Pages




Allow Site Collection

Administrators to see the URL Structure of their Web Site

Specify whether to allow site administrators to manage the URL structure of their Web site using SharePoint Designer.

☒ Enable Managing of the Web Site URL Structure



Reference: <https://redmondmag.com/articles/2015/03/19/sharepoint-designer-tool.aspx>

QUESTION 38

You have a SharePoint Server 2013 server farm that contains a web application.

A user receives an application error message that includes a Correlation ID.

You need to identify the cause of the error.

What should you do?

- A. Run the Get-SPDiagnosticConfig cmdlet.
- B. Review the Internet Information Services (IIS) logs.
- C. Run the Get-SPLogEvent cmdlet.
- D. Review problems and solutions in the SharePoint Health Analyzer.

Correct Answer: A

Section: [none]

Explanation

Explanation/Reference:

The Get-SPDiagnosticConfig cmdlet retrieves ULS diagnostic configuration values of the farm.

QUESTION 39

You have a SharePoint Server 2013 server farm.

You need to ensure that users can use the Newsfeed app on their My Site to aggregate user actions and system activities.

Which type of cache should you configure?

- A. An output cache
- B. An object cache
- C. A BLOB cache
- D. A distributed cache

Correct Answer: D

Section: [none]

Explanation

Explanation/Reference:

SharePoint 2013, makes use of distributed cache to cache newsfeeds, microblogging, conversations, security trimming, OneNote client access, and even keeps the FedAuth cookie for claims based authentication on the server side, so it's more secure, load balancer friendly, and works with webkit-based browsers that like to chop off your cookies at 64kb.

QUESTION 40

You have a SharePoint Server 2013 server farm.

You need to configure the People Picker control to display only users who are members of the current site collection.

Which tool should you use?

- A. Central Administration
- B. Psconfig
- C. Internet Information Services (IIS) Manager
- D. Stsadm

Correct Answer: D

Section: [none]

Explanation

Explanation/Reference:

You configure the People Picker web control at the zone level for a farm by using the Stsadmsetproperty operation. By configuring the settings for the control, you can filter and restrict the results that are displayed when a user searches for a user, group, or claim. Those settings will apply to every site within the site collection.

QUESTION 41

A SharePoint environment contains a single web application at http://app1. Users access a site collection under the web application by using the URL http://portal.contoso.com.

You need to ensure that the site collection is also accessible at http://collaboration.contoso.com.

What should you do?

- A. Run the New-SPSite Windows PowerShell cmdlet.
- B. Run the Set-SPSiteUrl Windows PowerShell cmdlet.
- C. Add collaboration.contoso.com as an alternate access mapping for the web application.
- D. Extend the web application and add collaboration.contoso.com to the Intranet Zone.

Correct Answer: B

Section: [none]

Explanation

Explanation/Reference:

The Set-SPSiteUrl cmdlet adds or changes an URL mapping for the site. The Set-SPSiteUrl cmdlet only applies to the root site collection for a host name that is, http://www.contoso.com. This cmdlet cannot be directly run against a managed path site collection underneath the root that is, http://www.contoso.com/sites/test. When you create a new hostname site collection, the default alternate access mappings will still exist but cannot be used. Use Windows PowerShell commands to manage URL mappings for host-named site collections.

Add a mapping to an existing site:

Set-SPSiteUrl (Get-SPSite 'http://teams.contoso.com') -Url 'http://teamsites.contoso.com' -Zone Intranet
Reference: Host-named site collections versus path-based site collections

QUESTION 42

Your network contains an Active Directory forest. The forest contains a single domain named adatum.com.

The network contains a SharePoint Server 2013 server farm. The farm contains a single web application named Web1. Users connect to Web1 by using the URL http://web1.adatum.com.

You need to configure the People Picker control to display only users who are members of organizational units (OUs) named Managers and Contractors.

What should you do?

- A. Modify the User Information List of the site collection.
- B. Set the Peoplepicker-setsiteuseraccountdirectorypath property of the site collection.
- C. Set the Peoplepicker-searchadforests property of the site collection.
- D. Modify the User Policy of Web1.

Correct Answer: B

Section: [none]

Explanation

Explanation/Reference:

* Operation name: Setsiteuseraccountdirectorypath

Sets the site user account directory path to a specific organizational unit (OU) in the same domain when the **url** and **path** parameters are specified.

* Example

To set a list of users to a specific OU (for example, Sales) in the Contoso Corp domain, use the following syntax:
stsadm -o setsiteuseraccountdirectorypath -path "CN=Sales,DC=ContosoCorp,DC=local" -url http://server_name

QUESTION 43

You have a SharePoint Server 2013 server farm. The farm has the following service applications:

- Secure Store Service
- Search Service Application
- Word Automation Services
- Managed Metadata Service
- User Profile Service Application

You need to be able to send and receive email from a SharePoint site.

What should you do first?

- A. Create a Work Management Service application.
- B. Configure self-service site creation.
- C. Create an App Management Service application.
- D. Configure alternate access mappings.

Correct Answer: A

Section: [none]

Explanation

Explanation/Reference:

The Work Management Service Application provides functionality to aggregate tasks to a central location on SharePoint Server:

Users get the possibility to view and track their to-dos and tasks.

Tasks can be cached to a users personal site.

Tasks can sync to Outlook where users can edit them wherever they have access to Outlook.

Tasks can be aggregated from Exchange, Project Server and SharePoint.

Based on 'Provider model' so that other systems can be integrated in the future.

Reference: <https://social.technet.microsoft.com/wiki/contents/articles/12525.sharepoint-2013-work-management-service-application.aspx>

QUESTION 44

You have a SharePoint Server 2013 server farm.

Active Directory attributes are imported to user profiles.

You need to ensure that if users change the mobile phone number in their SharePoint user profile, the new information will be copied to their Active Directory user account.

Which Active Directory permission should you assign to the synchronization account?

- A. Read All Properties
- B. Manage Replication Topology
- C. Write All Properties
- D. Replicate Directory Changes

Correct Answer: C

Section: [none]

Explanation

Explanation/Reference:

If you'll export property values from SharePoint Server to AD DS, the synchronization account must have CreateChild Objects (this object and all descendants) and Write All Properties (this object and all descendants) permissions on the organizational unit (OU) with which you are synchronizing. For more information, see the "Grant Create Child Objects and Write permission" section of Grant Active Directory Domain Services permissions for profile synchronization in SharePoint Server 2013.

Reference: <https://technet.microsoft.com/en-us/library/ff182925.aspx>

QUESTION 45

You plan to deploy a SharePoint Server 2013 server farm. The farm will contain the site collections configured as shown in the following table.

Site collection name	Allow the pages in _layouts to use the site master page	Authentication mode
SiteCol1	Yes	NTLM and forms-based authentication
SiteCol2	No	NTLM authentication only
SiteCol3	Yes	Forms-based authentication only
SiteCol4	Yes	NTLM authentication only

You need to identify the minimum number of web applications required to host the planned site collections.

How many web applications should you identify?.



<https://www.gratisexam.com/>

- A. 1
- B. 2
- C. 3
- D. 4

Correct Answer: D

Section: [none]

Explanation

Explanation/Reference:

Note: Web applications are what Windows SharePoint Services uses to hold site collections. Every site collection has to reside in a web application, although a web application can contain many site collections. When Windows SharePoint Services was installed, two web applications were created.

Reference: https://blogs.technet.microsoft.com/stefan_gossner/2011/04/13/site-master-page-vs-system-master-page/

QUESTION 46

You deploy a SharePoint Server 2013 server farm.

You receive a custom display template.

You need to ensure that the custom display template is available in a site collection.

What should you use to upload the template?

- A. The Master Page Gallery
- B. Composed looks
- C. Result types
- D. Variations

Correct Answer: A

Section: [none]

<https://www.gratisexam.com/>

Explanation

Explanation/Reference:

The template needs to be uploaded to the Master Page Gallery. This can be done by using Design Manager. Go to SiteSettings -> Design Manager -> Upload Design Files.

This can also be done directly from the Master Page Gallery.

1. Navigate to the Master Page Gallery (Site Settings -> under Web Designer Galleries -> Master Pages).
2. Select Files tab and then Upload Document.

QUESTION 47

You have a SharePoint Server 2013 server farm.

You have a custom Microsoft SQL Server database named SQL1. SQL1 has a table that contains expertise information about users. The following is an extract of the table.

Login	Expertise
Domain\user1	SharePoint
Domain\user2	Microsoft .NET Framework
Domain\user3	SQL Server

You need to import user profile information from Active Directory and from SQL1. What should you use?

- A. Profile synchronization and Business Connectivity Services (BCS)
- B. SharePoint Active Directory Import and External Identify Manager
- C. External Identity Manager and the Secure Store Service
- D. SharePoint Active Directory Import and Business Connectivity Services (BCS)

Correct Answer: A

Section: [none]

Explanation

Explanation/Reference:

You can import profile data from business systems by using the Business Connectivity Service.

Reference: <https://technet.microsoft.com/en-us/library/ee661740.aspx>

QUESTION 48

You plan to deploy a SharePoint Server 2013 server farm.

You have a network share named Share1 that contains the extracted installation files for SharePoint Server 2013.

You download a cumulative update for SharePoint Server 2013 named Cu1.exe.

You need to create a slipstreamed installation source that contains the cumulative update.

What should you do?

- A. Run cul.exe and specify the /extract parameter.
- B. Copy Cul.exe to the Updates folder in Share1.
- C. Run setup.exe and specify the /extract parameter.
- D. Create a folder named 15\Resources in Share1, and then copy Cul.exe to the 15\Resources folder.

Correct Answer: A

Section: [none]

Explanation

Explanation/Reference:

Extract the contents of the downloaded update file to the Updates folder in the SharePoint installation source with the following command:

{FileName}.exe /extract:C:\SPInstall\Updates

Note: SharePoint updates that have been released since the product launch provide fixes and enhancements to the product, and including these updates in a new installation is recommended. Rather than manually applying the updates after installing SharePoint, you can include them in a 'slipstream' mode so that they are automatically installed with SharePoint.

QUESTION 49

You plan to deploy a SharePoint Server 2013 server farm.

The farm will contain several site collections that use the Team Site template. The site collections will use navigation that is defined in a TermSet.

You need to identify which features must be activated to ensure that the site collections can use the planned navigation.

Which features should you identify?

- A. Metadata and Navigation Filtering and SharePoint Server Enterprise Site
- B. SharePoint Server Publishing and Content Organizer

- C. Metadata and Navigation Filtering and SharePoint Server Publishing Infrastructure
- D. SharePoint Server Publishing Infrastructure and SharePoint Server Publishing

Correct Answer: D

Section: [none]

Explanation

Explanation/Reference:

Explanation:

Before you enable managed navigation, make sure that:

You enable the SharePoint Server Publishing Infrastructure feature on the site collection level.

You create a term set to specify your site navigation.

You're a member of the Owners SharePoint group.

Reference: <https://support.office.com/en-us/article/Enable-managed-navigation-for-a-site-in-SharePoint-49a067dc-77d2-455d-9e77-250ec7cc0a6d>

I have found that SharePoint Server Publishing Infrastructure controls this feature and that the other features mentioned do not control much Jenny (13.06.2013): of the functionality regarding the question as this feature does. I will say D is the correct I suppose although you do not need Publishing on at the site level for a team site nor for termsets to be active.

QUESTION 50

You have a SharePoint Server 2013 server farm.

You have a web applications named WebApp1.

You have a SharePoint hosted app named App1. App1 contains a client Web Part named WP1.

You add App1 to a site named Site1 in WebApp1.

You need to prevent App1 from reading information in Site1.

What should you do?

- A. From Central Administration, modify the permission policy of WebApp1.
- B. From Site Settings of the Central Administration site, delete App1 from the Site App Permissions list.
- C. From Central Administration, modify the users permissions of WebApp1.
- D. From Site Settings of Site1, delete App1 from the Site App Permissions list.

Correct Answer: D

Section: [none]

Explanation

Explanation/Reference:

QUESTION 51

Your company has a SharePoint Server 2013 server farm.

You create a Business Connectivity Services (BCS) application.

You deploy the application to the farm,

Users create lists and add items to the lists based on the BCS application.

The users report that when they search for data, BCS items are not displayed in the search results. Other items in the farm are displayed in the search results.

You need to ensure that BCS data is displayed in the search results. The solution must minimize administrative effort.

What should you create?

- A. a Local SharePoint Results result source
- B. an OpenSearch 1.0/1.1 result source
- C. a Line of Business Data content source
- D. a Custom Repository content source

Correct Answer: C

Section: [none]

Explanation

Explanation/Reference:

If your company has an on-premises SharePoint 2013 farm and a SharePoint Online 2013 tenancy, you can use BCS to create a secure connection between the two to make line-of-business (LOB) data available to applications for SharePoint and external lists in SharePoint Online. This is called a SharePoint BCS Hybrid solution. SharePoint Online 2013 supports only one-way connections from online to on-premises and to only one on-premises farm. The LOB data must be published as an OData source

QUESTION 52

You have a SharePoint Server 2013 server farm.

The corporate taxonomy contains two term sets named Offices and Cities.

You need to ensure that the terms in the Cities term set can be used by the Offices term set,

What should you use?

- A. query refinement
- B. pinned terms
- C. managed navigation
- D. local properties

Correct Answer: B

Section: [none]

Explanation

Explanation/Reference:

SharePoint 2013 adds the concept of Pinning to taxonomy and the term store management tool. You might first encounter the option to Pin instead of Reuse on the page to add a catalog connection from cross site publishing or as a new node in the menu for a term in the term store management tool titled "Pin Term With Children." While at least one reason for choosing Pinning is better understood in the context of search driven publishing the tangible difference between the two is actually concise.

The difference is that while Pinning maintains a certain relationship (shared properties) between source term and Reuse instance on a one on one basis as Reuse does, Pinning also updates the hierarchy regarding the removal and addition of terms anywhere within that hierarchy.

QUESTION 53

You have a SharePoint Server 2013 server farm.

You need to view the errors generated by a Web Part.

What should you use?

- A. the Internet Information Services (IIS) logs
- B. the audit logs for the site collection
- C. the site collection health checks
- D. the SharePoint trace logs

Correct Answer: D

Section: [none]

Explanation

Explanation/Reference:

QUESTION 54

You deploy a SharePoint Server 2013 server farm.

You receive a custom display template.

You need to ensure that the custom display template is available in a site collection.

What should you use to upload the template?

- A. Design Manager
- B. composed looks
- C. result types
- D. the Style Library

Correct Answer: B

Section: [none]

Explanation

Explanation/Reference:

The template needs to be uploaded to the Master Page Gallery. This can be done by using Design Manager. Go to Site Settings -> Design Manager -> Upload Design Files.

This can also be done from the Master Page Gallery.

1. Navigate to the Master Page Gallery (Site Settings -> under Web Designer Galleries-> Master Pages).
2. Select Files tab and then Upload Document.

QUESTION 55

A company has a SharePoint environment that contains two SharePoint servers and a server that runs Microsoft SQL Server. A web application stores content in a single content database. All three servers are configured to meet or exceed the minimum hardware and software requirements. The SharePoint environment is primarily used for team collaboration and document storage.

All of the SharePoint Servers must be able to respond to user requests. Web traffic must be assigned to the server with the lowest health threshold value.

You need to configure the SharePoint farm.

Which service should you use?

- A. Request Management

- B. Microsoft Network Load Balancer (NLB)
- C. Microsoft SharePoint Foundation Subscription Settings
- D. Document Conversions Load Balancer
- E. Work Management

Correct Answer: A

Section: [none]

Explanation

Explanation/Reference:

Configure Request Manager in SharePoint Server 2013

Request Manager is functionality in SharePoint Server 2013 that enables administrators to manage incoming requests and determine how SharePoint Server 2013 routes these requests.

The front-end web server filtering process follows these steps:

- The routing pool is either the current front-end web server or one or more front-end web servers that request routing selects.
- All matching rules are checked to find the smallest health threshold value.
- Remove front-end web servers in the routing pool that have health scores greater than or equal to the smallest health threshold value.

Reference: <https://technet.microsoft.com/en-us/library/jj712708.aspx>

QUESTION 56

A company has two SharePoint 2007 site collections that each store 200,000 unique documents. The average size of each document is 250 KB. There are two non-current versions for each document.

There are approximately 600,000 list items in addition to the documents.

The company plans to upgrade the farm to SharePoint 2013.

The new farm will use two SQL Server instances that are configured as an AlwaysOn availability group. You use the following formula to estimate the size of the content database:

Database Size = ((D x V) x S) + (10 KB x (L + (V x D)))

You need to configure the storage for the content databases.

What is the minimum amount of storage space that you must allocate?

- A. 101 GB
- B. 110 GB

- C. 220 GB
- D. 405 GB
- E. 440 GB

Correct Answer: B

Section: [none]

Explanation

Explanation/Reference:

Using the formula we make the following calculation (see note below for details):

$((200000 \times 2) \times 250) + (10 \times 1024 \times (600000 + (2 \times 200000)))$ which calculates to 103400000000 bytes, which is 103.4 GB.

We would need 110 GB.

Note: Formula to estimate content database storage

- Use the following formula to estimate the size of your content databases:
Database size = $((D \times V) \times S) + (10 \text{ KB} \times (L + (V \times D)))$
- Calculate the expected number of documents. This value is known as D in the formula.
- Estimate the average size of the documents that you'll be storing. This value is known as S in the formula.
- Estimate the number of list items in the environment. This value is known as L in the formula.
- List items are more difficult to estimate than documents. We generally use an estimate of three times the number of documents (D), but this will vary based on how you expect to use your sites.
- Determine the approximate number of versions. Estimate the average number of versions any document in a library will have. This value will usually be much lower than the maximum allowed number of versions. This value is known as V in the formula.

Reference: Storage and SQL Server capacity planning and configuration (SharePoint Server 2013)

<https://technet.microsoft.com/en-us/library/cc298801.aspx>

QUESTION 57

You are managing a SharePoint farm in an Active Directory Domain Services (AD DS) forest and SharePoint Online.

You resolve an authentication issue with the on-premises SharePoint farm. Users now experience performance degradation.

You need to configure SharePoint 2013 Usage and Logging service to the default settings for user authentication logging.

From the Monitoring page in Central Administration, which two options will achieve the goal? Each correct answer presents a complete solution.

- A. Setting the value of the Least critical event to report to the event log setting to Monitorable
- B. Setting the value of the Least critical event to report to the trace log setting to Monitorable
- C. Setting the value of the Least critical event to report to the event log setting to Information
- D. Setting the value of the Least critical event to report to the event log setting to Verbose

- E. Setting the value of the Least critical event to report to the trace log setting to Verbose
- F. Setting the value of the Least critical event to report to the trace log setting to Medium

Correct Answer: BC

Section: [none]

Explanation

Explanation/Reference:

B: Trace log, level Monitorable. This level records messages about all unrecoverable events that limit the functionality of the solution but do not stop the application. When set to this level, the log also includes events that the Unexpected setting records.

C: Event log, Information: Information messages do not require any action. However, they can provide valuable data for monitoring the state of your solution.

Reference: Configure diagnostic logging in SharePoint 2013

<https://technet.microsoft.com/en-us/library/ee748656.aspx>

QUESTION 58

You are the administrator for a company's SharePoint Online environment. The environment hosts several site collections that are used to store and collaborate on (Documents that contain sensitive customer information.

A user in the customer relationship department must share a document that contains scheduling and project information with an external vendor. Only the external vendor and department user must access the document.

You need to ensure that the external vendor can access and collaborate on the document without exposing sensitive customer information.

Which two actions can you perform? Each correct answer presents a complete solution.

- A. Create a document library for the document and require sign-in.
- B. Share the site containing the collaboration document and require sign-in.
- C. Share the document and require sign-in.
- D. Share the document and do not require sign-in.

Correct Answer: AC

Section: [none]

Explanation

Explanation/Reference:

External users sign in to the service by using a Microsoft account or a work or school account.

We can share the document through a new document library or share the document directly.

Reference: <https://support.office.com/en-ca/article/Manage-sharing-with-external-users-in-Office-365-Small-Business-2951a85f-c970-4375-aa4f-6b0d7035fe35?>

[ui=en-US&rs=en-CA&ad=CA](#)

QUESTION 59

You administer a SharePoint Online tenant that has a site that contains a document library. Users from the Human Resource (HR) department have Contributor permissions to the site.

You need to prevent users from the HR department from accessing documents in the library.

Which permission option should you select?

- A. Stop Inheriting Permissions
- B. Grant Permissions
- C. Manage Parent
- D. Check Permissions
- E. Delete Unique Permissions

Correct Answer: A

Section: [none]

Explanation

Explanation/Reference:

Select Stop Inheriting Permissions on the document library for the HR department users. This will prevent them for accessing documents in this document library.

Reference: Edit permissions for a list, library, or individual item

<https://support.office.com/en-us/article/Edit-permissions-for-a-list-library-or-individual-item-02d770f3-59eb-4910-a608-5f84cc297782>

QUESTION 60

You are the SharePoint administrator for Contoso, Ltd. You plan to create a SharePoint intranet at <https://main.contoso.com>.

Site collections must not use Alternate Access Mappings to manage URLs.

You need to build a web application that uses claims-based authentication.

What should you do first?

- ☐ A. In Central Administration, create a SharePoint Web Application by using the host header main.contoso.com on port 443.
- ☐ B. In Central Administration, create a SharePoint Web Application by using a blank host header on port 443.
- ☐ C. Run the following Windows PowerShell command:

```
New-SPSite -Url 'https://main.contoso.com' -Name 'Portal' -OwnerAlias 'contoso\administrator'  
-language 1033 -Template 'STS#0'
```

- ☐ D. Run the following Windows PowerShell command:

```
New-SPSite -Url 'https://main.contoso.com' -Name 'Portal' -OwnerAlias 'contoso\administrator' -port 80  
-language 1033 -Template 'STS#0' -HostHeaderWebApplication 'http://<servername>'
```

- ☐ E. Run the following Windows PowerShell command:

```
New-SPWebApplication -Url 'https://main.contoso.com' -Name 'Contoso' -port 443  
-ApplicationPool SharePointPool -DatabaseName 'WebContentDatabase'
```

- A. Option A
- B. Option B
- C. Option C
- D. Option D
- E. Option E

Correct Answer: D

Section: [none]

Explanation

Explanation/Reference:

Explanation:

Path-based site collections use Alternate Access Mappings. We must use Host-named site collections.

For Host-named site collections we must use Windows PowerShell commands to manage URLs (Set-SPSiteURL, Remove-SPSiteURL, Get-SPSiteURL).

To create a host-named site collection we use the Windows PowerShell New-SPSite cmdlet with the -HostHeaderWebApplication parameter.

Example: New-SPSite 'http://portal.contoso.com' -HostHeaderWebApplication 'http://<servername>' -Name 'Portal' -Description 'Customer root' -OwnerAlias

'contoso\administrator' -language 1033 -Template 'STS#0'

Reference: Host-named site collection architecture and deployment (SharePoint 2013)

<https://technet.microsoft.com/en-us/library/cc424952.aspx#section1b>

QUESTION 61

You manage a SharePoint farm in an Active Directory Domain Services (AD DS) forest. You implement SharePoint Online.

AD DS users must be able to access on-premises sites and SharePoint Online resources without having to authenticate each time that they access SharePoint Online. You replace the default certificate for validating incoming tokens in the SharePointfarm.

You need to ensure that SharePoint uses the new certificate.

Which service must you restart?

- A. Certificate Service
- B. Component Services
- C. Security Token Service
- D. SharePoint Timer Service

Correct Answer: D

Section: [none]

Explanation

Explanation/Reference:

When you replace the Security Token Service (STS) certificate for a SharePoint 2013 farm you need to restart IIS and the SharePoint timer service.

Reference: Replace the STS certificate for the on-premises environment

<https://technet.microsoft.com/en-us/library/dn551378.aspx>

QUESTION 62

A company deploys Enterprise Search for SharePoint Server 2013.

Some crawls of result sources fail to complete.

You need to examine detailed information about crawl rate, crawl latency, crawl freshness, content processing, CPU and memory load, continuous crawls, and the crawl queue to determine how you should alter crawling.

What should you review?

- A. Microsoft Search Server performance counters

- B. The crawl log
- C. Crawl-health reports
- D. Unified Logging Service (ULS) logs

Correct Answer: C

Section: [none]

Explanation

Explanation/Reference:

Explanation:

Crawl-health reports provide detailed information about crawl rate, crawl latency, crawl freshness, content processing, CPU and memory load, continuous crawls, and the crawl queue.

Reference: <https://technet.microsoft.com/en-us/library/dn535606.aspx>

QUESTION 63

A company deploys Enterprise Search for SharePoint Server 2013. The company's Marketing department site is hosted on a local SharePoint farm. The Marketing department launches an anniversary promotional campaign.

After viewing search analytics reports for the campaign, you observe that search users are not being directed to the Marketing site.

You need to direct users to the anniversary promotional campaign pages by moving the result to the top of the search results.

What should you do?

- A. Configure properties of the Search Results Web Part NOT to search People, Conversations., or Video and default to Everything.
- B. Disable Query Rules that do not direct users to the site.
- C. Use a Query Rule to add a Promoted Result. Render the URL as a banner.
- D. Configure properties of the Search Result Web Part to use a Property filter to query content managed properties associated with Marketing.

Correct Answer: C

Section: [none]

Explanation

Explanation/Reference:

To promote individual results so that they appear towards the top of search results with a Query Rule, click Add Promoted Result . In the Add Promoted Result dialog box, in the Title field, type the name that you want to give this promoted result. In the URL field, type the URL of the result that should be promoted. Render the URL as a banner instead of as a hyperlink. Click Save.

Reference: Manage query rules in SharePoint Server 2013
<https://technet.microsoft.com/en-us/library/jj871676.aspx>

QUESTION 64

Contoso, Ltd., has an on-premises SharePoint 2013 implementation. It plans to migrate the sales department to SharePoint Online. Additional departments will be migrated in the future.

The sales department currently has a dedicated site collection for collaboration and document sharing.

The sales department site collection uses the managed path <https://sales.contoso.com>.
Contoso's SharePoint Online environment is accessible by using the URL <https://contoso.sharepoint.com>.

Sales team employees must be able to connect to SharePoint Online by using a simple managed path.

You need to configure SharePoint Online.

Which managed path should you use?

- A. <https://sales.contoso.com>
- B. <https://contoso-my.sharepoint.com>
- C. <https://contoso.sharepoint.com/sites/sales/>
- D. <https://teams.contoso.com/sites/sales/>

Correct Answer: C

Section: [none]

Explanation

Explanation/Reference:

Define managed paths in SharePoint Server 2013

An explicitly named path (for example, <http://server/sites/team>) is used for a single site collection. In this case the managed path would be <https://contoso.sharepoint.com/sites/sales/> as SharePoint online uses <https://contoso.sharepoint.com> and we want to provide a managed path for the Sales department's site collection.

Reference: <https://technet.microsoft.com/en-us/library/cc261845.aspx>

QUESTION 65

A company has a hybrid SharePoint environment and account information is synchronized between Active Directory Domain Services (AD DS) and Office 365.

You observe that AD DS accounts are not synchronized with Office 365.

You need to monitor account synchronization between Active Directory and Office 365.

Which two actions will achieve the goal? Each correct answer presents a complete solution.

- A. Run the following Windows PowerShell cmdlet: Start-OnlineCoexistenceSync
- B. Use the Onramp for Office 365 tool.
- C. Use the Azure Active Directory Synchronization Services tool.
- D. Use the Forefront Identity Manager client.

Correct Answer: CD

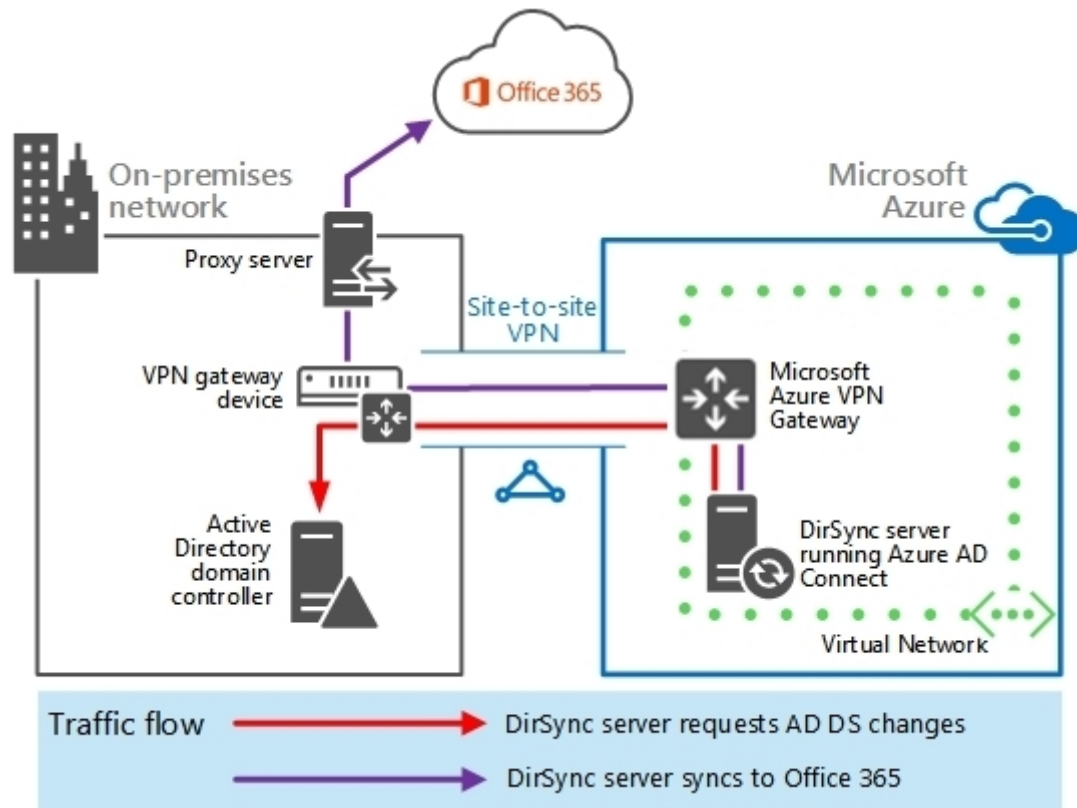
Section: [none]

Explanation

Explanation/Reference:

Explanation:

The following diagram shows the Azure AD Connect tool on a virtual machine in Azure (the DirSync server) synchronizing on-premises AD DS to Office 365.



Azure AD Connect tool on a virtual machine in Azure synchronizing on-premises accounts to the Azure AD tenant of an Office 365 subscription with traffic flow.

The Azure Active DirectorySynchronization Services tool lists a history of past synchronizations including any synch errors.

Forefront Identity Manager with the Azure Active Directory Connector configured can also be used to monitor account synchronization Active Directory.

Reference:<https://technet.microsoft.com/en-us/library/dn635310.aspx>

QUESTION 66

You administer a SharePoint 2013 environment.

You use iframes to display dynamic content from other sites.

You need to allow contributors to insert iframes into pages on the site from any external domain.

What should you configure?

- A. HTML field security
- B. site collection app permissions
- C. site permissions
- D. portal site connections
- E. site app permissions

Correct Answer: A

Section: [none]

Explanation

Explanation/Reference:

Explanation:

Any external domains that will be Inserted in an Iframe should be added as Approved domains in "HTML Field Security" first. "HTML Field Security" is a new feature that you would find in Site Settings (of a Site collection) under "Site Collection Administration" section.

Reference: <http://www.learningsharepoint.com/2012/11/24/how-to-use-iframes-in-sharepoint-2013/>

QUESTION 67

You are creating tags to identify content in a site collection.

You have the following requirements when tagging content:

- Tags that you create must be accessible only within the site collection.
- Users must be able to use only tags that you have approved.

You need to select a tagging technology. Which technology should you use?

- A. local term set
- B. enterprise content type hub
- C. enterprise keywords
- D. global term set

Correct Answer: A

Section: [none]

Explanation

Explanation/Reference:

QUESTION 68

You administer a SharePoint hybrid cloud deployment. System Center 2012 and Operations Manager with System Center Management Pack for SharePoint 2013 are installed.

You need to monitor the general health of the SharePoint environment by using Operations Manager with System Center Management Pack for SharePoint 2013.

Which task can you complete by using Operations Manager?

- A. Debug HTTP or HTTPS traffic between your computer and the Internet.
- B. Add a new server to the SharePoint 2013 farm.
- C. Monitor Performance and issue alerts to users when SharePoint performance is at risk in SharePoint 2013.
- D. Execute queries against text-based data on the Windows operating system.
- E. Execute deployment readiness checks against your on-premises environment to get it ready for Office 365.
- F. Configure SharePoint Health Analyzer timer jobs in SharePoint 2013

Correct Answer: C

Section: [none]

Explanation

Explanation/Reference:

Explanation:

The Operations Manager Web Part allows you to host dashboards on your SharePoint site. Unlike the web console, these dashboards are "look, but don't touch". You can view info, but not navigate elsewhere or run tasks. This is really good for giving people outside of the operations team a look at some operations data. You also don't need to add all the users of the dashboard to an Operations Manager Role. Instead you can add the groups you want to give access to the dashboard to SharePoint and have them all share a single Operations Manager account and connection.

Reference: <https://blogs.technet.microsoft.com/momteam/2011/09/27/setting-up-the-operations-manager-web-part/>

QUESTION 69

A company deploys Enterprise Search for SharePoint Server 2013.

Some crawls of result sources fail to complete.

You need to examine information about the status of crawled content to determine how you should alter crawling.

What should you review?

- A. Search Server performance counters
- B. the crawl log
- C. crawl-health reports
- D. Unified Logging Service (ULS) logs

Correct Answer: B

Section: [none]

Explanation

Explanation/Reference:

References:

<https://support.office.com/en-us/article/about-the-crawl-log-880822ee-5c4b-4f6a-bfe1-27285597b2db>

QUESTION 70

You manage the term store for a company's on-premises SharePoint farm. You plan to replicate the production environment term store to a development environment.

When you attempt to export the term store from the production environment, you receive the following error message:

You do not have permission to use the bulk load statement.

You need to complete the import of the term store.

What should you do?

- A. Grant the FullControl permissions to the farm administrator account for the \\MySharedLocation\MMS folder.
- B. Add the MMS Service account to the SQL Server bulk admin role.
- C. Add the SharePoint farm administrator account to the SQL Server security administrator role.
- D. Use an account that has the SQL administrator role assigned to it to perform the task.

Correct Answer: A

Section: [none]

Explanation

Explanation/Reference:

References:

<https://sharepointtales.wordpress.com/2012/05/08/common-issues-which-arise-when-you-use-import-spmetadatawebservicepartitiondata/>

QUESTION 71

You administer a SharePoint environment for Contoso, Ltd. that has multiple web applications and six service applications. Each web application uses a different

set of service applications. You create a service application proxy group named **Contoso**.

You need to add the service applications to the Contoso proxy group.

What should you do?

- A. Run the following Windows PowerShell command:
New-SPStateServiceApplicationProxy -Name "Contoso" -ServiceApplication <service application guid>
- B. Run the following Windows PowerShell commands:
New-SPServiceApplicationproxyGroup "Contoso"
Add-SPServiceApplicationProxyGroupmemeber "Contoso" - Member <service application guild>.
- C. On the Configure Service Application Associations page in Central Administration, add the services to the proxy group.
- D. Run the following Windows PowerShell command:
Add-SPServiceApplicationProxyGroupMember "Default" -Member <service application guid>
- E. On the Configure Service Connections page in Central Administration, create a new Service Application Proxy group. Add the services to the new proxy group.

Correct Answer: C

Section: [none]

Explanation

Explanation/Reference:

References:

<https://docs.microsoft.com/en-us/sharepoint/administration/add-or-remove-a-service-application-connection-to-a-web-application>

QUESTION 72

You manage a SharePoint tenant that has 15 site collections and 45 sites. All site templates are customized to conform to corporate branding requirements.

You have the following requirements:

- Users must be able to access SharePoint sites from the global navigation pane.
- Navigation must be security-trimmed and must automatically update as sites are added.
- Page load times for SharePoint Online must not be affected when users navigate through the site pages.

You need to configure navigation for the site.

Which navigation option should you use?

- A. Use structural navigation.
- B. Display the same navigation items as the patent site.
- C. Use managed navigation.

D. Use search-driven navigation.

Correct Answer: C

Section: [none]

Explanation

Explanation/Reference:

References:

<https://docs.microsoft.com/en-us/sharepoint/sites/site-navigation-overview>

<https://docs.microsoft.com/en-us/sharepoint/administration/overview-of-managed-navigation>

QUESTION 73

Contoso, Ltd., implements SharePoint Server 2013 to manage computer aided design (CAD) documents.

Users report that when they perform a search, text within CAD documents does not appear in the search results. Only file properties display in search results.

You need to ensure that search results display file properties and text within the documents.

Which two actions will achieve the goal? Each correct answer presents part of the solution. (Choose two.)

- A. Validate that the content processing component has a format handler that can parse each file format.
- B. Configure that crawl component to report results to the content database.
- C. Configure the crawl component to use custom entity extractors.
- D. Enable the content processing component to parse files that have the file format and file format and file name extension.

Correct Answer: AC

Section: [none]

Explanation

Explanation/Reference:

References:

<https://docs.microsoft.com/en-us/sharepoint/technical-reference/default-crawled-file-name-extensions-and-parsed-file-types>

<https://docs.microsoft.com/en-us/sharepoint/search/create-and-deploy-custom-entity-extractors>

QUESTION 74

You are the SharePoint administrator for Contoso. You are responsible for monitoring the health of the SharePoint databases and plan to use SharePoint 2013 Health Analyzer.

You must monitor the health of all databases.

You need to add the databases that are not monitored by the Health Analyzer tool to a SQL Server monitoring plan.

Which database should you add?

- A. User Profile Service Application Social database
- B. Web Analytics Service Application Reporting database
- C. Content databases
- D. Line-of-business databases

Correct Answer: D

Section: [none]

Explanation

Explanation/Reference:

References:

<https://docs.microsoft.com/en-us/sharepoint/technical-reference/database-types-and-descriptions>

QUESTION 75

You manage a SharePoint farm in an Active Directory Domain Services (AD DS) forest. You implement SharePoint Online.

AD DS users must be able to access on-premises sites and SharePoint Online resources without having to authenticate every time they access SharePoint Online. Users report that after they enter their credentials three times to access SharePoint Online, the sign-on page reports HTTP error 401.

You need troubleshoot the issue.

Which tool should you use?

- A. Log Parser 2.2
- B. Remote Connectivity Analyzer
- C. SharePoint Server Unified Logging Service (ULS) logs
- D. Microsoft Network Monitor 3.4

Correct Answer: C

Section: [none]

Explanation

Explanation/Reference:

References:

<https://docs.microsoft.com/en-us/sharepoint/administration/claims-authentication-does-not-validate-user>

QUESTION 76

A company implements a hybrid SharePoint solution by using SharePoint 2013 and Office 365. The Active Directory Domain Services domain uses Windows 2013 native mode. The company acquires a new division and plans to synchronize the additional forest with Office 365.

You perform the initial configuration steps for the solution by using the DirSync tool.

You need to perform a multi-forest Active Directory sync.

Which three actions can you perform? Each correct answer presents a complete solution.

- A. Install DirSync on a server that runs Forefront Identity Manager 2010 R2. Use DirSync for the multi-forest synchronization
- B. Uninstall any instances of Azure Active Directory Synchronization Services or Forefront Identity Management 2010 R2, and then install and use DirSync for the multi-forest synchronization.
- C. Install and configure Forefront Identity Manager 2010 R2
- D. Install Azure Directory Synchronization Services on a separate server from the server that runs DirSync and Forefront Identity Manager server.
- E. Uninstall DirSync and then install Azure Active Directory Synchronization Services (AAD Sync). Use AAD Sync for the multi-forest synchronization
- F. Install Azure Active Directory Synchronization Services on the same server that hosts DirSync. Use DirSync to configure multi-forest on-premises SharePoint environments.

Correct Answer: CDF

Section: [none]

Explanation

Explanation/Reference:

References:

<https://docs.microsoft.com/en-us/azure/active-directory/hybrid/plan-connect-topologies>

QUESTION 77

You have a SharePoint Server 2013 server farm.

You need to view the errors generated by a Web Part.

What should you use?

- A. the site collection health checks
- B. the Developer Dashboard
- C. the administrative reports

D. the Internet Information Services (IIS) logs

Correct Answer: C

Section: [none]

Explanation

Explanation/Reference:

References:

<https://chayadigital.wordpress.com/2011/11/16/how-to-find-your-sharepoint-error-logs/>

QUESTION 78

Contoso, Ltd., has a public-facing SharePoint site collection. The default site page contains a list that displays the most popular music tracks played on the site. The sitemap file for the site resides at <http://www.contoso.com/sitemap.xml>. Users search for the most popular music tracks by using an external search engine.

Users observe that the external search engine results contain hundreds of links to the default site page.

You need to exclude the site from being crawled by any external search engines.

What should you do?

- A. On the Search engine optimization settings page, enable the Do not follow link parameters checkbox.
- B. Create a robots.txt file at <http://www.contoso.com/robots.txt>. In the file, include the following values:
User-agent: *
Disallow: /.
- C. On the default site page, create a search engine optimization (SEO) meta tag to exclude the page from search engines
- D. On the Search engine sitemap settings page, enter the following Internet search engine exclusion: <http://www.contoso.com/sitemap.xml>

Correct Answer: B

Section: [none]

Explanation

Explanation/Reference:

References:

<https://www.microsoft.com/en-us/download/details.aspx?id=40848>

QUESTION 79

You administer a SharePoint environment for Contoso, Ltd. that has multiple web applications and six service applications. Each web application uses a different set of service applications.

You must configure the service application associations by using Service Application Proxy Groups. The service application proxy group must be reusable.

You need to create the service application proxy group.

What should you do?

- A. On the Configure Service Connections page in Central Administration, create a new Service Application Proxy group. Add the services to the new proxy group.
- B. Run the following Windows PowerShell command:
**New-SPStateServiceApplicationProxy -Name "Contoso"
-ServiceApplication <service application guid>**
- C. Run the following Windows PowerShell commands:
**New-SPServiceApplicationProxyGroup "Contoso"
Add-SPServiceApplicationProxyGroupMember "Contoso"
-Member <service application guid>**
- D. On the Configure Service Application Associations page in Central Administration, add the services to the proxy group.
- E. Run the following Windows PowerShell command:
**Add-SPServiceApplicationProxyGroupMember "Default"
-Member <service application guid>**

Correct Answer: A

Section: [none]

Explanation

Explanation/Reference:

References:

<http://www.sharepointdiary.com/2014/02/managing-proxy-groups-in-sharepoint-using-powershell.html>

QUESTION 80

A company has a SharePoint environment that contains two SharePoint servers and a server that runs SQL Server. A web application stores content in a single content database. All three servers meet or exceed the minimum hardware and software requirements. The SharePoint environment is primarily used for team collaboration and document storage.

You need to implement site mailboxes.

Which two services should you implement? Each correct answer presents part of the solution.

- A. SharePoint Foundation Incoming E-Mail
- B. Work Management Service
- C. App Management Service

- D. User Profile synchronization service
- E. Request Management

Correct Answer: CD

Section: [none]

Explanation

Explanation/Reference:

References:

<https://docs.microsoft.com/en-us/sharepoint/administration/configure-site-mailboxes-in-sharepoint>



<https://www.gratisexam.com/>