

MICROSOFT 70-410 EXAM QUESTIONS & ANSWERS

Number: 70-410
Passing Score: 800
Time Limit: 120 min
File Version: 38.5



<http://www.gratisexam.com/>



MICROSOFT 70-410 EXAM QUESTIONS & ANSWERS

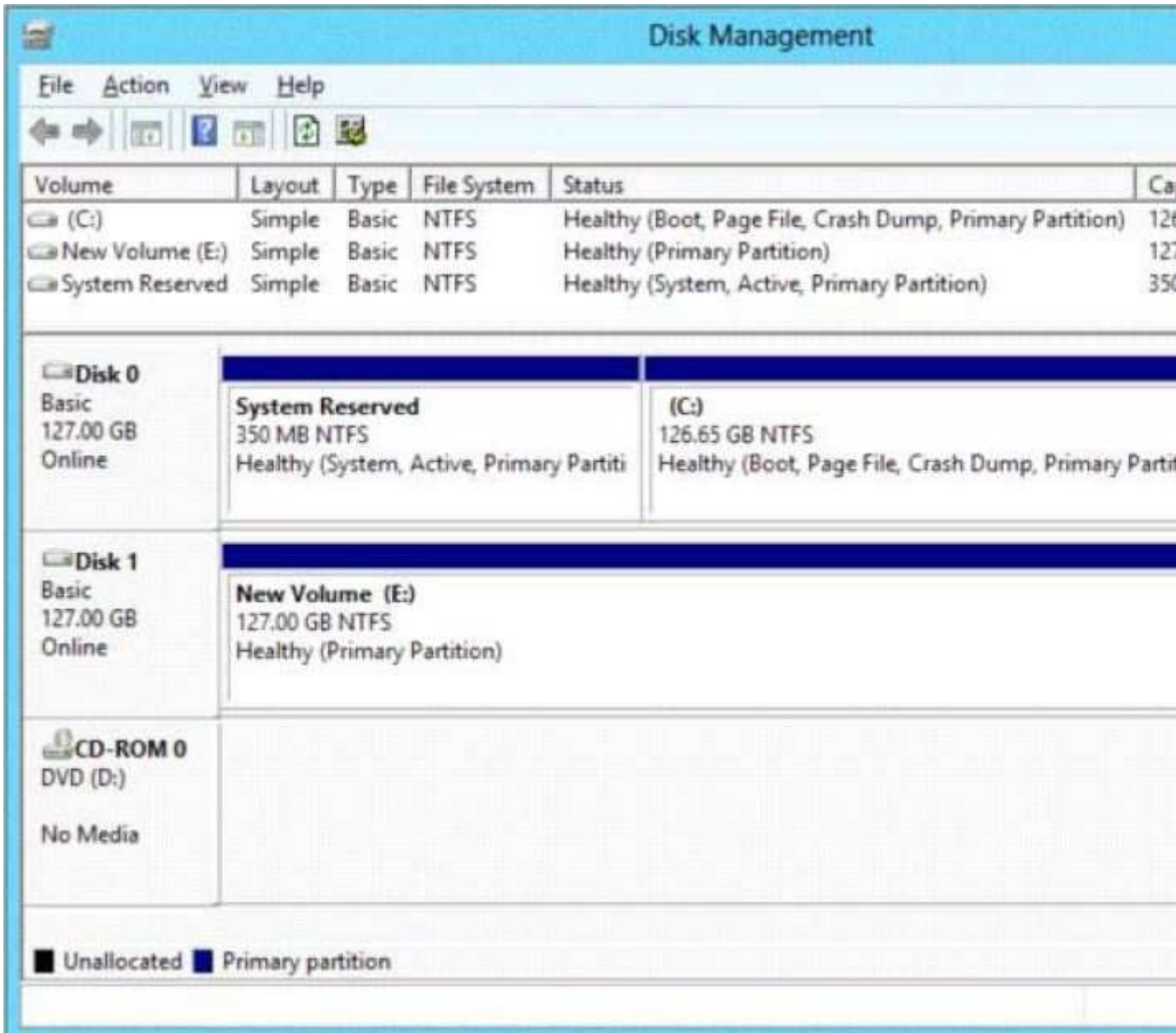
Exam Name: Installing and Configuring Windows Server 2012

Actualcerts

QUESTION 1

You have a server named Server1 that runs Windows Server 2012. Server1 has the Hyper-V server role installed. The disks on Server1 are configured as shown in the exhibit. (Click the Exhibit button.)

Exhibit:



- A. Delete partition E.
- B. Convert Disk 1 to a GPT disk
- C. Convert Disk 1 to a dynamic disk.
- D. Take Disk 1 offline.

Correct Answer: D

Section: (none)

Explanation

Explanation/Reference:

QUESTION 2

You have a server named Server1 that runs Windows Server 2012. Server1 has the Hyper-V server role installed. You have fixed-size VHD named Files.vhd. You need to make the contents in Files.vhd available to several virtual machines. The solution must meet the following requirements:

- Ensure that if the contents are changed on any virtual machine, the changes are not reflected on the other virtual machines.
 - Minimize the amount of disk space used.
- What should you do

- A. Create a dynamically expanding VHDX. Transfer the information from Files.vhd to the new VHDX file
- B. Create a fixed-size VHDX. Transfer the information from Files.vhd to the new VHDX file.
- C. Convert Files.vhd to a dynamically expanding VHD.
- D. Create differencing VHD5 that use Files.vhd as the parent disk

Correct Answer: D

Section: (none)

Explanation

Explanation/Reference:

QUESTION 3

You have a server named Server1 that runs Windows Server 2012. Server1 has the Hyper-V server role installed. On Server1, you create a virtual machine named VM1. VM1 has a legacy network adapter. You need to assign a specific amount of available network bandwidth to VM1. What should you do first?

- A. Remove the legacy network adapter, and then run the Set-VMNetworkAdaptercmdlet.
- B. Add a second legacy network adapter, and then run the Set-VMNetworkAdaptercmdlet
- C. Add a second legacy network adapter, and then configure network adapter teaming.
- D. Remove the legacy network adapter, and then add a network adapter

Correct Answer: D

Section: (none)

Explanation

Explanation/Reference:

QUESTION 4

You have a server named Server1 that runs Windows Server 2012. Server1 has the Print and Document Services server role installed. Server1 is connected to two identical print devices. You need to ensure that users can submit print jobs to the print devices. The solution must ensure that if one print device fails, the print jobs will print automatically on the other print device. What should you do on Server1?

- A. Add two printers and configure the priority of each printer.
- B. Add one printer and configure printer pooling.
- C. Install the Network Load Balancing (NLB) feature, and then add one printer.
- D. Install the Failover Clustering feature, and then add one printer

Correct Answer: A

Section: (none)

Explanation

Explanation/Reference:

QUESTION 5

Your network contains a server named Server1 that runs Windows Server 2012. Server1 has the Print and Document Services server role installed. You connect a new print device to the network. The marketing department and the sales department will use the print device. You need to provide users from both departments with the ability to print to the network print device. The solution must ensure that if there are multiple documents queued to print, the documents from the sales users print before the documents from

the marketing users. What should you do on Server1?



<http://www.gratisexam.com/>

- A. Add two printers. Modify the priorities of each printer and the security settings of each printer
- B. Add two printers and configure printer pooling
- C. Add one printer and configure printer pooling.
- D. Add one printer. Modify the printer priority and the security settings

Correct Answer: D

Section: (none)

Explanation

Explanation/Reference:

QUESTION 6

You plan to deploy a DHCP server that will support four subnets. The subnets will be configured as shown in the following table.

You need to identify which network ID you should use for each subnet. What should you identify? To answer, drag the appropriate network ID to the each subnet in the answer area.

Exhibit:

Subnet name	Number of hosts
Subnet1	50
Subnet2	110
Subnet3	400
Subnet4	525

Network IDs	Answer Area
10.10.1.0/26	Subnet1 <input type="text" value="Network ID"/>
10.10.8.0/22	Subnet2 <input type="text" value="Network ID"/>
10.10.16.0/25	Subnet3 <input type="text" value="Network ID"/>
10.10.128.0/23	Subnet4 <input type="text" value="Network ID"/>

ANSWER=

Network IDs	Answer Area
	Subnet1 <input type="text" value="10.10.1.0/26"/>
	Subnet2 <input type="text" value="10.10.16.0/25"/>
	Subnet3 <input type="text" value="10.10.128.0/23"/>
	Subnet4 <input type="text" value="10.10.8.0/22"/>

A. Click Exhibit to see case + answer

Correct Answer: A

Section: (none)

Explanation

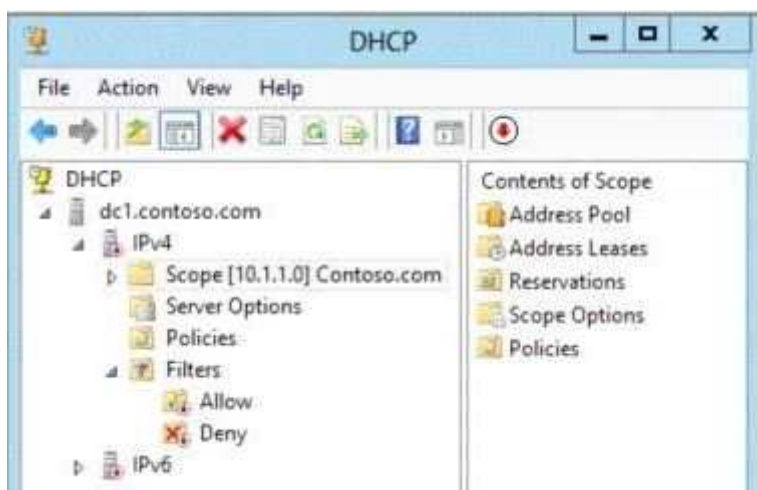
Explanation/Reference:

QUESTION 7

Your network contains an Active Directory domain named contoso.com. The domain contains a domain controller named DC1 that runs Windows Server 2012 and a client computer named Computer1 that runs Windows 8. DC1 is configured as a DHCP server as shown in the exhibit. (Click the Exhibit button.)

Computer1 is configured to obtain an IP address automatically. You need to ensure that Computer1 can receive an IP address from DC1. What should you do?

Exhibit:



- A. Disable the Allow filters.
- B. Disable the Deny filters
- C. Activate Scope [10.1.1.0] Contoso.com.
- D. Authorize dc1.contoso.com.

Correct Answer: D

Section: (none)

Explanation

Explanation/Reference:

QUESTION 8

Your network contains an Active Directory domain named contoso.com. All user accounts are in an organizational unit (OU) named Employees. You create a Group Policy object (GPO) named GP1. You link GP1 to the Employees OU. You need to ensure that GP1 does not apply to the members of a group named Managers. What should you configure?

- A. The Security settings of Employees
- B. The WMI filter for GP1
- C. The Block Inheritance option for Employees
- D. The Security settings of GP1

Correct Answer: B

Section: (none)

Explanation

Explanation/Reference:

QUESTION 9

You have a file server named Server1 that runs Windows Server 2012. You need to ensure that a user named User1 can use Windows Server Backup to create a complete backup of Server1. What should you configure?

- A. The local groups by using Computer Management
- B. A task by using Authorization Manager
- C. The User Rights Assignment by using the Local Group Policy Editor
- D. The Role Assignment by using Authorization Manager

Correct Answer: A

Section: (none)

Explanation

Explanation/Reference:

QUESTION 10

Your network contains a server named Server1 that runs Windows Server 2012. Server1 has the Hyper-V server role installed. Server1 hosts four virtual machines named VM1, VM2, VM3, and VM4. Server1 is configured as shown in the following table

VM3 is used to test applications. You need to prevent VM3 from synchronizing its clock to Server1. What should you configure?

Exhibit:

Hardware component	Configuration
Processor	Eight quad-core CPUs that have non-uniform memory access (NUMA)
Memory	32 GB of RAM
Disk	Two local 4-TB disks
Network	Eight network adapters VMQ-supported PCI-SIG-supported

- A. NUMA topology
- B. Resource control
- C. resource metering
- D. virtual Machine Chimney
- E. the VLAN ID
- F. Processor Compatibility
- G. the startup order
- H. Automatic Start Action
- I. Integration Services
- J. Port mirroring
- K. Single-root I/O virtualization

Correct Answer: I

Section: (none)

Explanation

Explanation/Reference:

QUESTION 11

Your network contains a server named Server1 that runs Windows Server 2012. Server1 has the Hyper-V server role installed. Server1 hosts four virtual machines named VM1, VM2, VM3, and VM4. Server1 is configured as shown in the following table.

You need to configure VM4 to track the CPU, memory, and network usage. What should you configure?

Exhibit:

Hardware component	Configuration
Processor	Eight quad-core CPUs that have non-uniform memory access (NUMA)
Memory	32 GB of RAM
Disk	Two local 4-TB disks
Network	Eight network adapters VMQ-supported PCI-SIG-supported

- A. NUMA topology
- B. Resource control
- C. resource metering
- D. Virtual Machine Chimney
- E. the VLAN ID
- F. Processor Compatibility
- G. the startup order
- H. Automatic Start Action
- I. Integration Services
- J. Port mirroring
- K. Single-root I/O virtualization

Correct Answer: C

Section: (none)

Explanation

Explanation/Reference:

QUESTION 12

Your network contains an Active Directory domain named contoso.com. The domain contains two domain controllers. The domain controllers are configured as shown in the following table.

In the perimeter network, you install a new server named Server1 that runs a Server Core Installation of Windows Server 8. You need to join Server1 to the contoso.com domain. What should you use?

Exhibit:

Name	Operating system	Operation master role
DC1	Windows Server 8	<ul style="list-style-type: none"> Domain naming master Schema master
DC2	Windows Server 2008 R2	<ul style="list-style-type: none"> PDC emulator RID master Infrastructure master

- A. The New-ADComputer cmdlet
- B. The djoin.exe command
- C. The dsadd.exe command
- D. The Add-Computer cmdlet

Correct Answer: B

Section: (none)

Explanation

Explanation/Reference:

QUESTION 13

You have a server named Server1 that runs Windows Server 2012. You need to remove Windows Explorer, Windows Internet Explorer, and all related components and files from Server1. What should you run on Server1?

- A. Uninstall-WindowsFeature Server-Gui-Mgmt-Infra Remove
- B. Uninstall-WindowsFeature Server-Gui-Shell Remove
- C. `msiexec.exe /uninstall iexplore.exe /x`
- D. `msiexec.exe /uninstall explorer.exe /x`

Correct Answer: B

Section: (none)

Explanation

Explanation/Reference:

QUESTION 14

You have a server that runs Windows Server 2012. The server contains the disks configured as shown in the following table.

You need to create a volume that can store up to 3 TB of user files. The solution must ensure that the user files are available if one of the disks in the volume fails. What should you create?

Exhibit:

Disk name	Partition table type	Disk storage type	Unallocated disk space
Disk 0	GPT	Dynamic	2 TB
Disk 1	MBR	Basic	4 TB
Disk 2	GPT	Dynamic	4 TB
Disk 3	GPT	Dynamic	4 TB
Disk 4	MBR	Basic	2 TB

- A. a mirrored volume on Disk 1 and Disk 4
- B. a mirrored volume on Disk 1 and Disk 3
- C. a RAID-S volume on Disk 1, Disk 2, and Disk 3
- D. a spanned volume on Disk 0 and Disk 4

Correct Answer: D

Section: (none)

Explanation

Explanation/Reference:

QUESTION 15

You have a server named Core1 that has a Server Core Installation of Windows Server 2012. Core1 has the Hyper-V server role installed. Core1 has two network adapters from different third-party hardware vendors. You need to configure network traffic failover to prevent connectivity loss if a network adapter fails. What should you use?

- A. `New-NetSwitchTeam`
- B. `Add-NetSwitchTeamMember`
- C. `Install-Feature`
- D. `netsh.exe`

Correct Answer: A

Section: (none)

Explanation

Explanation/Reference:

QUESTION 16

You perform a Server Core Installation of Windows Server 2012 on a server named Server1. You need to add a graphical user interface (GUI) to Server1. Which tool should you use?

- A. The setup.exe command
- B. The dism.exe command
- C. The imagex.exe command
- D. The Add-WindowsPackage cmdlet

Correct Answer: A

Section: (none)

Explanation

Explanation/Reference:

QUESTION 17

Your network contains three servers. The servers are configured as shown in the following table.

Your company plans to standardize all of the servers on Windows Server 8. You need to recommend an upgrade path for each server. The solution must meet the following requirements:

- Upgrade the existing operating system whenever possible.
- Minimize hardware purchases.

Which upgrade path should you recommend for each server? To answer, drag the appropriate upgrade path to each server in the answer area. Each upgrade path may be used once, more than once, or not at all.

Exhibit:

Server name	CPU type	Operating system	Installation type
Server1	x86	32-bit Windows Server 2008 Service Pack 2 (SP2)	Full
Server2	X86	32-bit Windows Server 2008 Service Pack 2 (SP2)	Server Core
Server3	x64	64-bit Windows Server 2008 R2	Full

Click here to enter text.	Answer Area
<input type="button" value="Clean installation on new hardware"/> <input type="button" value="Clean installation on existing hardware"/> <input type="button" value="Upgrade on existing hardware"/>	Server1 <input type="text"/> Server2 <input type="text"/> Server3 <input type="text"/>

ANSWER=

Click here to enter text.	Answer Area
<input type="button" value="Clean installation on new hardware"/> <input type="button" value="Clean installation on existing hardware"/> <input type="button" value="Upgrade on existing hardware"/>	Server1 <input type="button" value="Clean installation on new hardware"/> Server2 <input type="button" value="Clean installation on new hardware"/> Server3 <input type="button" value="Upgrade on existing hardware"/>

A. Click Exhibit for case + answer

Correct Answer: A

Section: (none)

Explanation

Explanation/Reference:

QUESTION 18

Your network contains an Active Directory domain named contoso.com. The domain contains a print server named Server1 that runs Windows Server 2012. You share several printers on Server1. You need to ensure that you can view the printer objects associated to Server1 in Active Directory Users and Computers. Which option should you select?

To answer, select the appropriate option in the answer area.

Exhibit:



ANSWER=



A. Click Exhibit for case + answer

Correct Answer: A

Section: (none)

Explanation

Explanation/Reference:

QUESTION 19

Your network contains an Active Directory domain named contoso.com. The network contains a domain controller named DC1 that has to DNS Server server role installed. DC1 has a standard primary DNS zone

for contoso.com. You need to ensure that only client computers in the contoso.com domain will be able to add their records to the contoso.com zone. What should you do first?

- A. Modify the Security settings of Dc1
- B. Modify the Security settings of the contoso.com zone.
- C. Store the contoso.com zone in Active Directory
- D. Sign the contoso.com zone.

Correct Answer: D

Section: (none)

Explanation

Explanation/Reference:

QUESTION 20

Your network contains a single Active Directory domain named contoso.com. The network contains two subnets. The subnets are configured as shown in the following table.



<http://www.gratisexam.com/>

The network contains a member server named Server1 that runs Windows Server 2012. Server1 has the DHCP Server server role installed. Server1 is configured to lease IP addresses to the two subnets. You discover that computers on the Warehouse subnet that have static IP addresses can communicate with the computers on the MainOffice subnet. Computers on the Warehouse subnet that obtain an IP address automatically can only communicate with other computers on the Warehouse subnet. You need to ensure that all of the computers on the Warehouse subnet can communicate with the computers on the MainOffice subnet. Which DHCP option should you configure on Server1?

Exhibit:

Subnet name	Network IP address
MainOffice	172.16.0.0
Warehouse	192.168.1.0

- A. 003 Router
- B. 011 Resource Location Servers
- C. 020 Nonlocal Source Routing
- D. 019 IP Layer Forwarding

Correct Answer: A

Section: (none)

Explanation

Explanation/Reference:

QUESTION 21

Your network contains three servers that run Windows Server 2012. The servers are configured as shown in the following table.

Server3 is configured to obtain an IP address automatically. You need to prevent Server3 from receiving an IP address from Server1. What should you create on Server1?

Exhibit:

Server name	Server role
Server1	Active Directory Domain Services DHCP Server DNS Server
Server2	Remote Access DHCP Server
Server3	File and Storage Services

- A. A reservation
- B. A filter
- C. A scope option
- D. An exclusion

Correct Answer: B

Section: (none)

Explanation

Explanation/Reference:

QUESTION 22

Your network contains an Active Directory domain named contoso.com. You log on to a domain controller by using an account named Admin1. Admin1 is a member of the Domain Admins group. You view the properties of a group named Group1 as shown in the exhibit. (Click the Exhibit button.)

Group1 is located in an organizational unit (OU) named OU1. You need to ensure that users from Group1 can modify the Security settings of OU1 only. What should you do from Active Directory Users and Computers

Exhibit:

The screenshot shows the 'Group1 Properties' dialog box. The 'General' tab is active, displaying the group name 'Group1', a description field, an email field, and group settings. Under 'Group scope', 'Global' is selected. Under 'Group type', 'Security' is selected. The 'Members', 'Member Of', and 'Managed By' tabs are also visible at the top. The 'Notes' field is empty and has a scroll bar. At the bottom are 'OK', 'Cancel', and 'Apply' buttons.

- A. Modify the Managed By settings on OU1.

- B. Right-click contoso.com and select Delegate Control.
- C. Right-click OU1 and select Delegate Control.
- D. Modify the Security settings of Group1.

Correct Answer: C

Section: (none)

Explanation

Explanation/Reference:

QUESTION 23

Your network contains an Active Directory forest named contoso.com. All domain controllers currently run Windows Server 2008 R2. You plan to install a new domain controller named DC4 that runs Windows Server 8. The new domain controller will have the following configurations:

- Schema master
- Global catalog server
- DNS Server server role
- Active Directory Certificate Services server role

You need to identify which configurations cannot be fulfilled by using the Active Directory Installation Wizard. Which two configurations should you identify? (Each correct answer presents part of the solution. Choose two.)

- A. Transfer the schema master.
- B. Enable the global catalog server.
- C. Install the DNS Server role
- D. Install the Active Directory Certificate Services role.

Correct Answer: CD

Section: (none)

Explanation

Explanation/Reference:

QUESTION 24

Your network contains an Active Directory domain named contoso.com. You discover that when you join client computers to the domain manually, the computer accounts are created in the Computers container. You need to ensure that new computer accounts are created automatically in an organizational unit (OU) named Corp. Which tool should you use?

- A. net.exe
- B. redircmp.exe
- C. regedit.exe
- D. dsadd.exe

Correct Answer: B

Section: (none)

Explanation

Explanation/Reference:

QUESTION 25

Your network contains a server named Server1 that runs Windows Server 2012. Server1 has the Hyper-V server role installed. Server1 hosts four virtual machines named VM1, VM2, VM3, and VM4. Server1 is configured as shown in the following table.

You need to ensure that VM1 can use more CPU time than the other virtual machines when the CPUs on Server1 are under a heavy load. What should you configure?

Exhibit:

Hardware component	Configuration
Processor	Eight quad-core CPUs that have non-uniform memory access (NUMA)
Memory	32 GB of RAM
Disk	Two local 4-TB disks
Network	Eight network adapters VMQ-supported PCI-SIG-supported

- A. NUMA topology
- B. Resource control
- C. resource metering
- D. Virtual Machine Chimney
- E. The VLAN ID
- F. Processor Compatibility
- G. The startup order
- H. Automatic Start Action
- I. Integration Services
- J. Port mirroring
- K. Single-root I/O virtualization

Correct Answer: B

Section: (none)

Explanation

Explanation/Reference:

QUESTION 26

Your network contains a server named Server1 that runs Windows Server 8. Server1 has the Hyper-V server role installed. Server1 hosts four virtual machines named VM1, VM2, VM3, and VM4. Server1 is configured as shown in the following table.

VM2 sends and receives large amounts of data over the network. You need to ensure that the network traffic of VM2 bypasses the virtual switches of the parent partition. What should you configure?

Exhibit:

Hardware component	Configuration
Processor	Eight quad-core CPUs that have non-uniform memory access (NUMA)
Memory	32 GB of RAM
Disk	Two local 4-TB disks
Network	Eight network adapters VMQ-supported PCI-SIG-supported

- A. NUMA topology
- B. Resource control
- C. Resource metering

- D. Virtual Machine Chimney
- E. The VLAN ID
- F. Processor Compatibility
- G. The startup order
- H. Automatic Start Action
- I. Integration Services
- J. Port mirroring
- K. Single-root I/O virtualization

Correct Answer: K

Section: (none)

Explanation

Explanation/Reference:

QUESTION 27

Your network contains an Active Directory domain named contoso.com. The domain contains a domain controller named DC1 that runs Windows Server 2012. You need to configure a central store for the Group Policy Administrative Templates. What should you do on Dc1?

- A. From Server Manager, create a storage pool.
- B. From Windows Explorer, copy the PolicyDefinitions folder to the SYSVOL\contoso.com\policies folder.
- C. From Server Manager, add the Group Policy Management feature
- D. From Windows Explorer, copy the PolicyDefinitions folder to the NETLOGON share.

Correct Answer: B

Section: (none)

Explanation

Explanation/Reference:

QUESTION 28

Your network contains two servers named Server1 and Server2 that run Windows Server 2012. You need to install the Remote Desktop Services server role on Server2 remotely from Server1. Which tool should you use

- A. The dsadd.exe command
- B. The Server Manager console
- C. The Remote Desktop Gateway Manager console
- D. The Install-RemoteAccess cmdlet

Correct Answer: B

Section: (none)

Explanation

Explanation/Reference:

QUESTION 29

Your network contains a Windows Server 2012 image named Server12.wim. Server12.wim contains the images shown in the following table.

Server12.wim is located in C:\.

You need to enable the Windows Server Migration Tools feature in the Windows Server 2012 Server Datacenter image. You want to achieve this goal by using the minimum amount of Administrative effort. Which command should you run first?

Exhibit:

Index number	Image name
1	Windows Server 2012 Server Standard Core
2	Windows Server 2012 Server Standard
3	Windows Server 2012 Server Datacenter Core
4	Windows Server 2012 Server Datacenter

- A. `dism.exe /mount-wim /wimfile:c:\Server12.wim /index:4 /mountdir:c:\mount`
- B. `imagex.exe /capture c: c:\Server12.wim "windows server 2012server datacenter"`
- C. `dism.exe /image: c:\Server12.wim /enable-feature /featurename: servermigration`
- D. `imagex.exe /apply c:\Server12.wim 4 c:\`

Correct Answer: A

Section: (none)

Explanation

Explanation/Reference:



<http://www.gratisexam.com/>