

Microsoft.Braindumps.70-410.v2014-04-01.by.CONNIE .36q

Number: 70-410
Passing Score: 700
Time Limit: 120 min
File Version: 20.5



<http://www.gratisexam.com/>

Exam Code: 70-410-R2-Update-Fixed-Answers

Exam Name: Installing and Configuring Windows Server 2012 R2



Question Set 1

QUESTION 1

You have a server named Server1 that runs Windows Server 2012 R2. Server1 has the Hyper-V server role installed.

An iSCSI SAN is available on the network.

Server1 hosts four virtual machines named VM1, VM2, VM3, and VM4.

You create a LUN on the SAN to host the virtual hard drive files for the virtual machines.

You need to create a 3-TB virtual hard disk for VM1 on the LUN. The solution must prevent VM1 from being paused if the LUN runs out of disk space.

Which type of virtual hard disk should you create on the LUN?

- A. Fixed-size VHDX
- B. Dynamically expanding VHDX
- C. Fixed-size VHD
- D. Dynamically expanding VHD

Correct Answer: A

Section: [none]

Explanation

Explanation/Reference:

QUESTION 2

You have a Hyper-V host named Server1 that runs Windows Server 2012 R2. Server1 has the virtual switches listed in the following table.

Virtual switch name	Virtual switch type	Physical network adapter name
vSwitch1	External	NIC1
vSwitch2	External	NIC2

You create a virtual machine named VM1. VM1 has two network adapters. One network adapter connects to vSwitch1. The other network adapter connects to vSwitch2. You configure NIC teaming on VM1.

You need to ensure that if a physical NIC fails on Server1, VM1 remains connected to the network.

What should you do on Server1?

- A. Run the Set-VmNetworkAdapter cmdlet.
- B. Create a new virtual switch on Server1.
- C. Modify the properties of vSwitch1 and vSwitch2.
- D. Add a new network adapter to VM1.

Correct Answer: A

Section: [none]

Explanation

Explanation/Reference:

QUESTION 3

Your network contains an Active Directory domain named adatum.com. The domain contains a member server named Host1. Host1 runs Windows Server 2012 R2 and has the Hyper-V server role installed.

Host1 hosts two virtual machines named VM5 and VM6. Both virtual machines connect to a virtual switch named Virtual 1.

On VM5, you install a network monitoring application named Monitor1.

You need to capture all of the inbound and outbound traffic to VM6 by using Monitor1.

Which two commands should you run from Windows PowerShell? (Each correct answer presents part of the solution. Choose two.)

- A. Get-VM "VM6" | Set-VMNetworkAdapter-iovWeight 1
- B. Get-VM "VM5" | Set-VMNetworkAdapter -iovWeight 0
- C. Get-VM "VM5" | Set-VMNetworkAdapter -PortMirroring Source
- D. Get-VM "VM6" | Set-VMNetworkAdapter -AllowTeaming On
- E. Get-VM "VM6" | Set-VMNetworkAdapter -PortMirroring Destination
- F. Get-VM "VM5" | Set-VMNetworkAdapter -AllowTeaming On

Correct Answer: CE

Section: [none]

Explanation

Explanation/Reference:

QUESTION 4

You have a server named Server1 that runs Windows Server 2012 R2.

You plan to use Windows PowerShell Desired State Configuration (DSC) to confirm that the Application Identity service is running on all file servers.

You define the following configuration in the Windows PowerShell Integrated Scripting Environment (ISE):

```
Configuration Configuration1
{
    Service Service1
    {
        Name = "AppIDSvc"
        StartupType = "Automatic"
    }
}
```

You need to use DSC to configure Server1 as defined in the configuration. What should you run first?

- A. Service 1
- B. Test-DscConfiguration
- C. Start-DscConfiguration
- D. Configuration1

Correct Answer: D

Section: [none]

Explanation

Explanation/Reference:

QUESTION 5

Your network contains an Active Directory domain named contoso.com. The domain contains a DHCP server named Server1 that runs Windows Server 2012 R2.

You create a DHCP scope named Scope1. The scope has a start address of 192.168.1.10, an end address of 192.168.1.50, and a subnet mask of 255.255.255.192.

You need to ensure that Scope1 has a subnet mask of 255.255.255.0.



<http://www.gratisexam.com/>

What should you do first?

- A. From the DHCP console, reconcile Scope1.
- B. From the DHCP console, delete Scope1.
- C. From the DHCP console, modify the Scope Options of Scope1.
- D. From Windows PowerShell, run the Set-DhcpServerv4Scope cmdlet.

Correct Answer: B

Section: [none]

Explanation

Explanation/Reference:

<http://www.xiahxiu.net/2012/03/how-to-change-subnet-mask-of-dhcp-scope.html>

<http://support.microsoft.com/kb/255999>

QUESTION 6

Your network contains an Active Directory domain named contoso.com.

You have a DHCP server named Server1 that runs Windows Server 2008. You install Windows Server 2012 R2 on a server named Server2. You install the DHCP Server server role on Server2.

You need to migrate the DHCP services from Server1 to Server2. The solution must meet the following requirements:

- Ensure that existing leases are migrated.
- Prevent lease conflicts.

Which three actions should you perform? (Each correct answer presents part of the solution. Choose three.)

- A. On Server1, run the Export-DhcpServer cmdlet.
- B. On Server1, run the Stop-Service cmdlet.
- C. On Server2, run the Receive-SmigServerData cmdlet.
- D. On Server2, run the Stop-Service cmdlet.
- E. On Server2, run the Import-DhcpServer cmdlet.
- F. On Server1, run the Send-SmigServerData cmdlet.

Correct Answer: ABE

Section: [none]

Explanation

Explanation/Reference:

QUESTION 7

You have a server named Server1 that runs Windows Server 2012 R2.

Server1 has three physical network adapters named NIC1, NIC2, and NIC3.

On Server1, you create a NIC team named Team1 by using NIC1 and NIC2. You configure Team1 to accept network traffic on VLAN 10.

You need to ensure that Server1 can accept network traffic on VLAN 10 and VLAN 11. The solution must ensure that the network traffic can be received on both VLANs if a network adapter fails.

What should you do?

- A. From Server Manager, change the load balancing mode of Team1.
- B. Run the New-NetLbfoTeam cmdlet.
- C. From Server Manager, add an interface to Team1.
- D. Run the Add-NetLbfoTeamMember cmdlet.

Correct Answer: C

Section: [none]

Explanation

Explanation/Reference:

Not sure if this is the correct answer

QUESTION 8

You have a server named Server1 that runs Windows Server 2012 R2.

You need to create a script that will create and mount a virtual hard disk.

Which tool should you use?

- A. vdsldr.exe
- B. diskpart.exe
- C. fsutil.exe
- D. vds.exe

Correct Answer: B

Section: [none]

Explanation

Explanation/Reference:

QUESTION 9

You have virtual machine named VM1.

VM1 uses a fixed size virtual hard disk (VHD) named disk1.vhd. Disk1.vhd is 200 GB. You shut down VM1.

You need to reduce the size of disk1.vhd.

Which action should you select from the Edit Virtual Hard Disk Wizard?

- A. Merge
- B. Compact
- C. Shrink
- D. Convert

Correct Answer: D

Section: [none]

Explanation

Explanation/Reference:

QUESTION 10

You have a Hyper-V host named Server1 that runs Windows Server 2012 R2. Server1 hosts 50 virtual machines that run Windows Server 2012 R2.

Your company uses smart cards for authentication.

You need to ensure that you can use smart card authentication when you connect to the virtual machine by using Virtual Machine Connection.

What should you configure?

- A. The NUMA Spanning settings
- B. The RemoteFX settings
- C. The Enhanced Session Mode Policy
- D. The Integration Services settings

Correct Answer: C

Section: [none]

Explanation

Explanation/Reference:

QUESTION 11

Your network contains an Active Directory domain named contoso.com. The domain contains a server named Server1. Server1 runs Windows Server 2012 R2.

You need to create a 3-TB virtual hard disk (VHD) on Server1.

Which tool should you use?

- A. Computer Management
- B. Server Manager
- C. Share and Storage Management
- D. New-VirtualDisk

Correct Answer: A

Section: [none]

Explanation

Explanation/Reference:

QUESTION 12

Your network contains an Active Directory domain named contoso.com. The domain contains a member server named Server1. Server1 runs Windows Server 2012 R2 and has the DHCP Server server role installed.

You create two IPv4 scopes on Server1. The scopes are configured as shown in the following table.

Scope name	IPv4 scope
Subnet_Tor	192.168.2.0/24
Subnet_Mtl	192.168.1.0/24

The DHCP clients in Subnet_Tor can connect to the client computers in Subnet_Mtl by using an IP address or a FQDN. You discover that the DHCP clients in Subnet_Mtl can connect to client computers in Subnet_Tor by using an IP address only.

You need to ensure that the DHCP clients in both subnets can connect to any other DHCP client by using a FQDN.

What should you add?

- A. The 015 DNS Domain Name option to Subnet_Mtl
- B. The 015 DNS Domain Name option to Subnet_Tor
- C. The 006 DNS Servers option to Subnet_Mtl
- D. The 006 DNS Servers option to Subnet_Tor

Correct Answer: C

Section: [none]

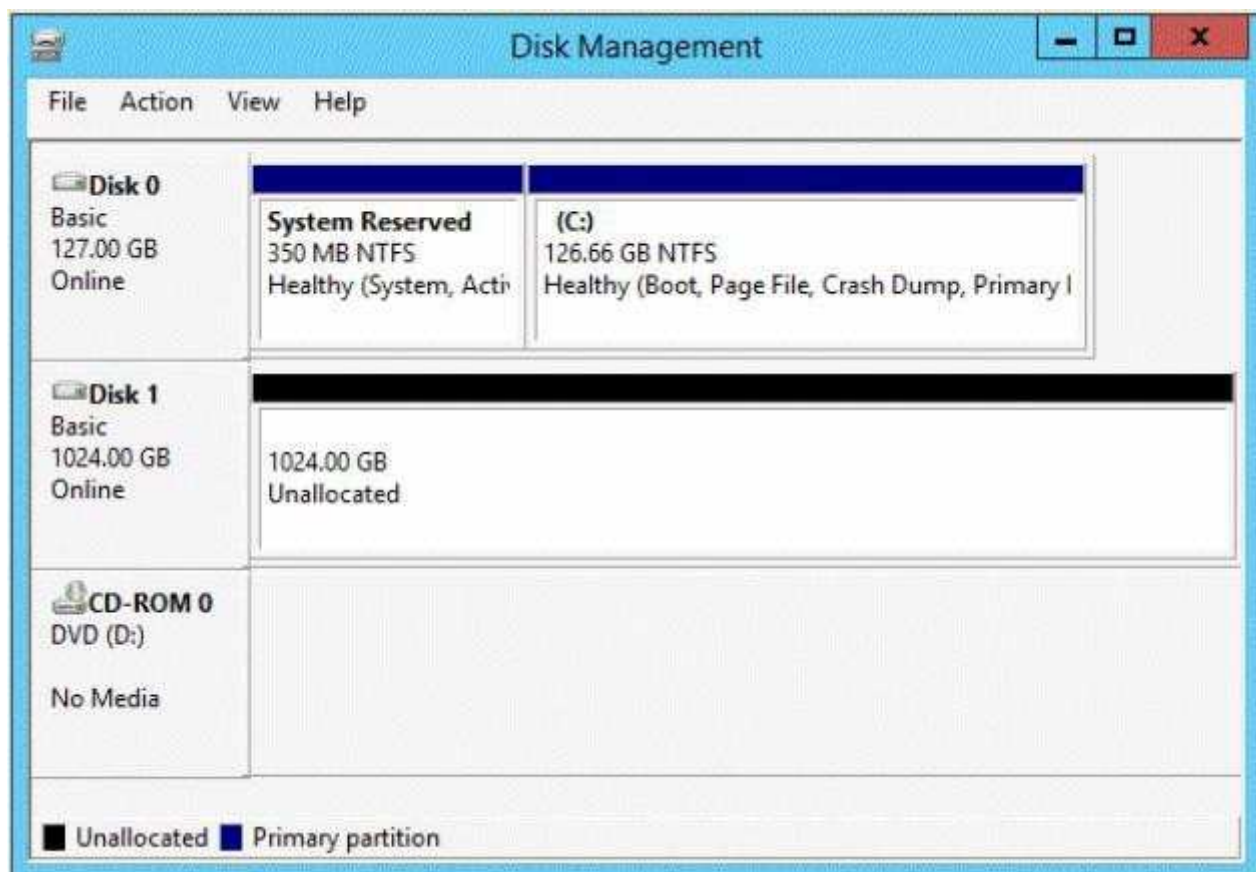
Explanation

Explanation/Reference:

QUESTION 13

You have a server named Server1 that runs Windows Server 2012 R2.

You add an additional disk to Server1 as shown in the exhibit. (Click the Exhibit button.)



You need to ensure that users can access the additional disk from drive C.

What should you do?

- A. Convert Disk 0 and Disk 1 to dynamic disks and extend a volume.
- B. Convert Disk 1 to a dynamic disk and create a spanned volume.
- C. Create a simple volume on Disk 1 and mount the volume to a folder.
- D. Convert Disk 0 to a dynamic disk and add a mirror.

Correct Answer: C

Section: [none]

Explanation

Explanation/Reference:

QUESTION 14

Your network contains several servers that run Windows Server 2012 R2 and client computers that run Windows 8.1.

You download several signed Windows PowerShell scripts from the Internet.

You need to run the PowerShell scripts on all of the servers and all of the client computers.

What should you modify first?

- A. the environment variables on all of the servers
- B. the environment variables on all client computers
- C. the execution policy on all of the servers
- D. the execution policy on all of the client computers

Correct Answer: D

Section: [none]

Explanation

Explanation/Reference:

Restricted

- Default execution policy in Windows 8, Windows Server 2012, and Windows 8.1.

RemoteSigned

- Scripts can run. This is the default execution policy in Windows Server 2012 R2. Requires a digital signature from a trusted publisher on scripts and configuration files that are downloaded from the Internet (including e-mail and instant messaging programs).

This leads me to believe you would first need to modify execution policy on the client (windows 8.1) computers before running your signed script.

<http://technet.microsoft.com/en-us/library/hh847748.aspx>

QUESTION 15

Your network contains an Active Directory domain named contoso.com. The domain contains a domain controller named Server1 that runs Windows Server 2012 R2.

On Server1, you create a work folder named Work1.

A user named User1 connects to Work1 from a computer named Computer1.

You need to identify the last time the documents in Work1 were synchronized successfully from Computer1.

What should you do?

- A. From Windows PowerShell, run the Get-SyncShare cmdlet.
- B. From Windows PowerShell, run the Get-SyncUserSettings cmdlet.
- C. From Server Manager, review the properties of Computer1.
- D. From Server Manager, review the properties of User1.

Correct Answer: D

Section: [none]

Explanation

Explanation/Reference:

QUESTION 16

Your network contains an Active Directory domain named contoso.com. The domain contains 100 user accounts that reside in an organizational unit (OU) named OU1.

You need to ensure that a user named User1 can link and unlink Group Policy objects (GPOs) to OU1. The solution must minimize the number of permissions assigned to User1.

What should you do?

- A. Add User1 to the Group Policy Creator Owners group.
- B. Modify the permissions on the User1 account.
- C. Modify the permissions on OU1.
- D. Run the Delegation of Control Wizard on the Policies container.

Correct Answer: D

Section: [none]

Explanation

Explanation/Reference:

QUESTION 17

Your network contains an Active Directory domain named contoso.com. The domain contains hundreds of groups, many of which are nested in other groups.

The domain contains a user account named User1. User1 is a direct member of 15 groups.

You need to identify of which Active Directory groups User1 is a member, including the nested groups. The solution must minimize administrative effort.

Which tool should you use?

- A. ADSI Edit
- B. Get-ADUser
- C. Active Directory Users and Computers
- D. Dsget

Correct Answer: B

Section: [none]

Explanation

Explanation/Reference:

QUESTION 18

Your network contains an Active Directory domain named contoso.com. The domain contains a server named Server1. The domain contains a standalone server named Server2 that is located in a perimeter network. Both servers run Windows Server 2012 R2.

You need to manage Server2 remotely from Server1.

What should you do?

- A. From Server2, run the Enable-PsRemoting cmdlet.
- B. From Server1, run the winrni command.
- C. From Server2, run the winrm command.
- D. From Server1, run the Enable-PsRemoting cmdlet.

Correct Answer: A

Section: [none]

Explanation

Explanation/Reference:

QUESTION 19

Your network contains an Active Directory forest named contoso.com. The forest contains five domains. All domain controllers run Windows Server 2012 R2.

The contoso.com domain contains two user accounts named Admin1 and Admin2.

You need to ensure that Admin1 and Admin2 can configure hardware and services on all of the member servers in the forest. The solution must minimize the number of privileges granted to Admin1 and Admin2.

Which built-in groups should you use?

- A. Server Operators global groups
- B. Domain Admins global groups
- C. Administrators domain local groups
- D. Administrators local groups

Correct Answer: B

Section: [none]

Explanation

Explanation/Reference:

This could be wrong as well but if there are multiple domains in a forest you should need a global group
[http://technet.microsoft.com/en-us/library/cc756898\(v=ws.10\).aspx](http://technet.microsoft.com/en-us/library/cc756898(v=ws.10).aspx)

QUESTION 20

Your network contains a server named Server1 and 10 Web servers. All servers run Windows Server 2012 R2.

You create a Windows PowerShell Desired State Configuration (DSC) to push the settings from Server1 to all of the Web servers.

On Server1, you modify the file set for the Web servers.

You need to ensure that all of the Web servers have the latest configurations.

Which cmdlet should you run on Server1?

- A. Restore-DscConfiguration
- B. Set-DscLocalConfigurationManager
- C. Start-DscConfiguration
- D. Get-DscConfiguration

Correct Answer: D

Section: [none]

Explanation

Explanation/Reference:

According to this Start-DscConfiguration would be for configuring not checking if servers have latest configurations

<http://technet.microsoft.com/en-us/library/dn521623.aspx>

<http://technet.microsoft.com/en-us/library/dn407379.aspx> Example 2.

QUESTION 21

You have a server named Server1 that runs Windows Server 2012 R2.

You need to switch Server1 to a Server Core installation of Windows Server 2012 R2.

What command should you run?

To answer, select the appropriate options in the answer area.

Answer Area

-Restart

Hot Area:

Answer Area

-Restart

Add-WindowsFeature	Desktop-Experience
Install-WindowsFeature	Server-Gui-Mgmt-Infra
Uninstall-WindowsFeature	Server-Gui-Shell

Correct Answer:

Answer Area

-Restart

Add-WindowsFeature	Desktop-Experience
Install-WindowsFeature	Server-Gui-Mgmt-Infra
Uninstall-WindowsFeature	Server-Gui-Shell

Section: [none]

Explanation

Explanation/Reference:

Explanation:

Answer Area

-Restart

Add-WindowsFeature	Desktop-Experience
Install-WindowsFeature	Server-Gui-Mgmt-Infra
Uninstall-WindowsFeature	Server-Gui-Shell

QUESTION 22

You are configuring a multi-subnet IPv6 network for a regional office.

The corporate network administrator allocates the 2001:0db8:1234:0800: :/54 address space for your use.

You need to identify network IDs of the first and last subnets that you will be able to create at the office.

Which network IDs should you identify?

To answer, drag the appropriate network IDs to the correct subnets. Each network ID may be used once, more than once, or not at all. You may need to drag the split bar between panes or scroll to view content.

Select and Place:

Network IDs	Answer Area
2001:0db8:1234:0800::/54	First subnet: <input type="text" value="Network ID"/>
2001:0db8:1234:0800::/64	Last subnet: <input type="text" value="Network ID"/>
2001:0db8:1234:0801::/54	
2001:0db8:1234:0801::/64	
2001:0db8:1234:08ff:/54	
2001:0db8:1234:08ff:/64	
2001:0db8:1234:0bff:/54	
2001:0db8:1234:0bff:/64	

Correct Answer:

Network IDs	Answer Area
2001:0db8:1234:0800::/54	First subnet: <input type="text" value="2001:0db8:1234:0800::/64"/>
<input type="text"/>	Last subnet: <input type="text" value="2001:0db8:1234:0bff:/64"/>
2001:0db8:1234:0801::/54	
2001:0db8:1234:0801::/64	
2001:0db8:1234:08ff:/54	
2001:0db8:1234:08ff:/64	
2001:0db8:1234:0bff:/54	
<input type="text"/>	

Section: [none]

Explanation

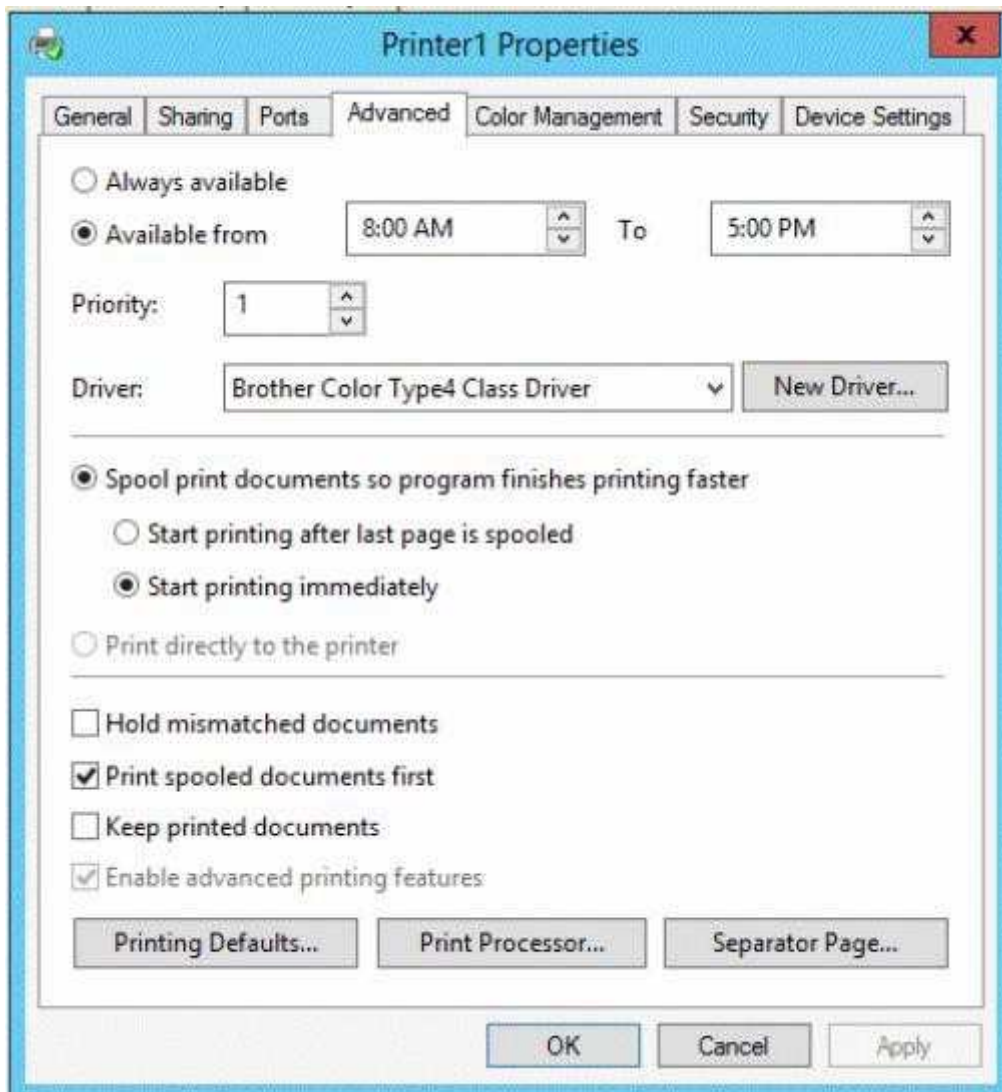
Explanation/Reference:

QUESTION 23

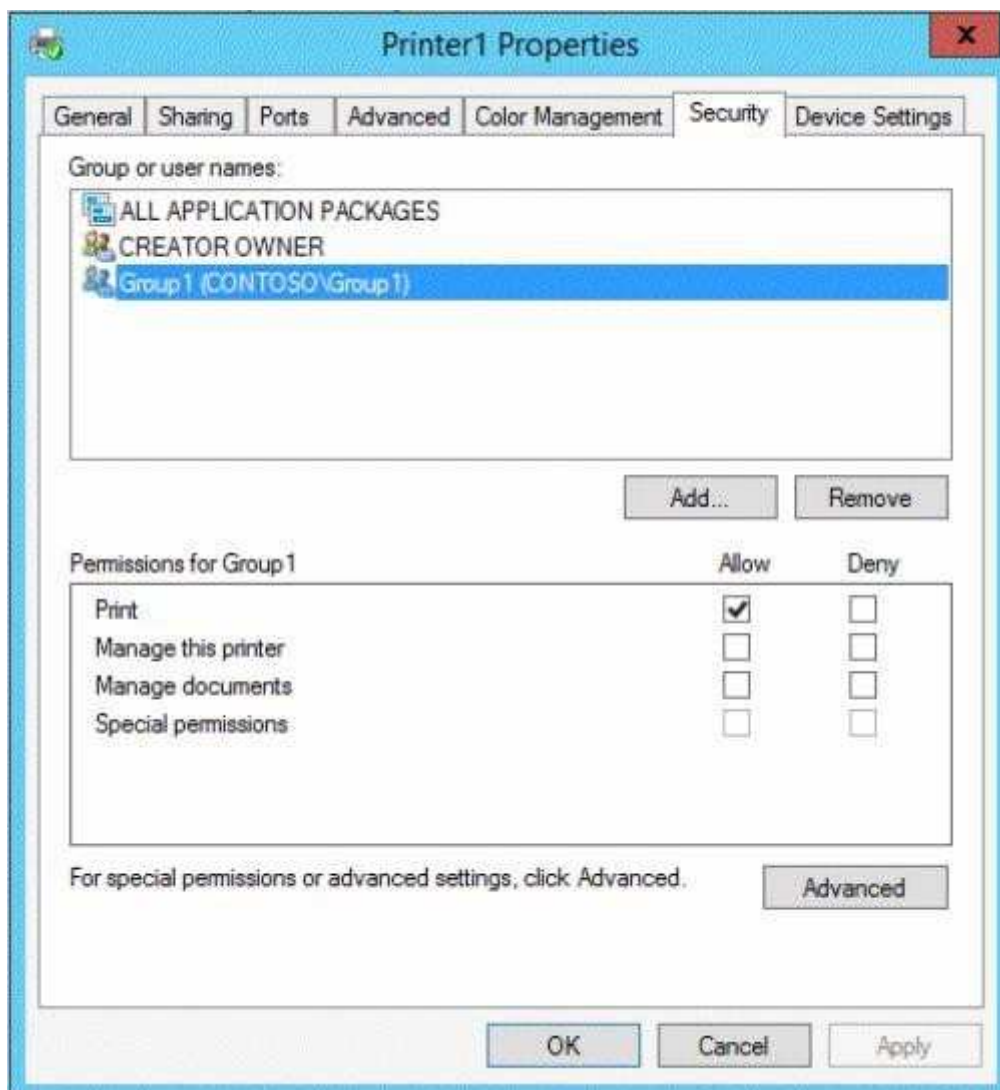
You have a print server named Server1 that runs Windows Server 2012 R2.

On Server1, you create and share a printer named Printer1.

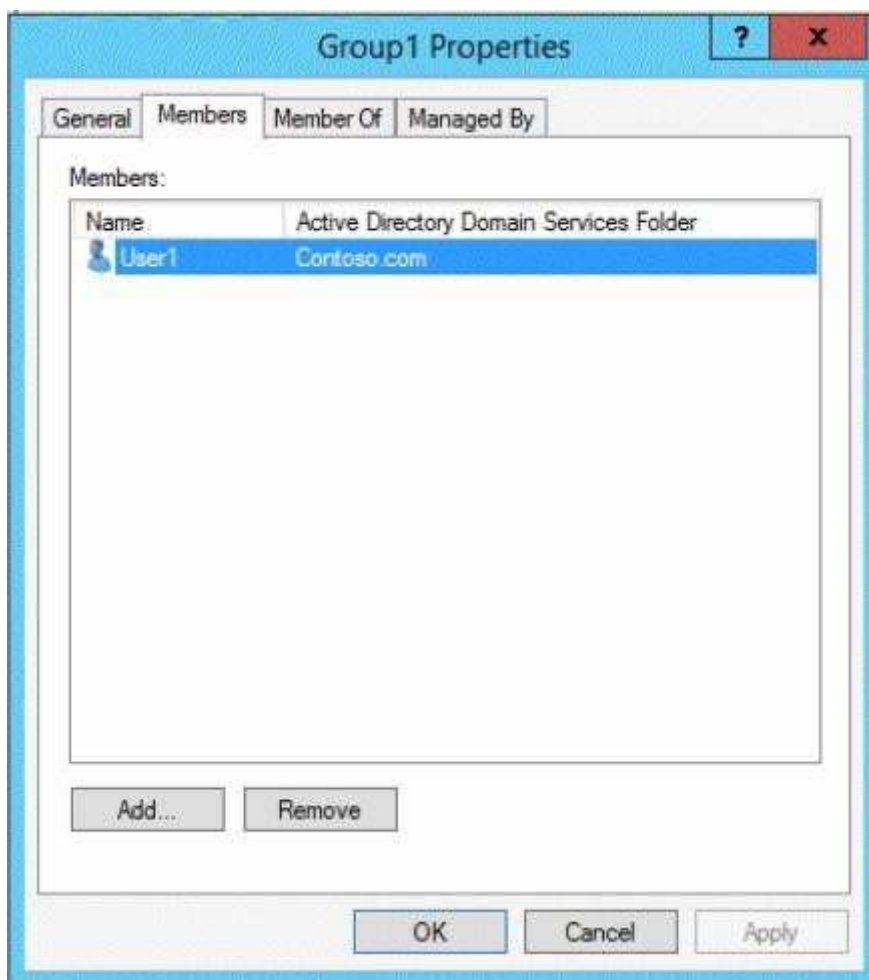
The Advanced settings of Printer1 are shown in the Advanced exhibit. (Click the Exhibit button.)



The Security settings of Printer1 are shown in the Security exhibit. (Click the Exhibit button.)



The Members settings of a group named Group1 are shown in the Group1 exhibit. (Click the Exhibit button.)



Select Yes if the statement can be shown to be true based on the available information; otherwise select No. Each correct selection is worth one point.

Hot Area:

	Yes	No
User1 can print on Printer1 on Monday at 18:00.	<input type="radio"/>	<input type="radio"/>
User2 can print on Printer1 on Friday at 14:00.	<input type="radio"/>	<input type="radio"/>
User1 can print on Printer1 on Sunday at 11:00.	<input type="radio"/>	<input type="radio"/>

Correct Answer:

	Yes	No
User1 can print on Printer1 on Monday at 18:00.	<input type="radio"/>	<input checked="" type="radio"/>
User2 can print on Printer1 on Friday at 14:00.	<input type="radio"/>	<input checked="" type="radio"/>
User1 can print on Printer1 on Sunday at 11:00.	<input checked="" type="radio"/>	<input type="radio"/>

Section: [none]

Explanation

Explanation/Reference:

Explanation:

	Yes	No
User1 can print on Printer1 on Monday at 18:00.	<input type="radio"/>	<input checked="" type="radio"/>
User2 can print on Printer1 on Friday at 14:00.	<input type="radio"/>	<input checked="" type="radio"/>
User1 can print on Printer1 on Sunday at 11:00.	<input checked="" type="radio"/>	<input type="radio"/>

QUESTION 24

A printer named Printer1 is configured as shown in the exhibit. (Click the Exhibit button.)


```
Administrator: Windows PowerShell
PS C:\> Get-Printer Printer1 | Format-List

Name                          : Printer1
ComputerName                  :
Type                          : Local
ShareName                     : Printer1
PortName                      : LPT1:,LPT2:
DriverName                    : Brother Color Leg Type1 Class Driver
Location                      :
Comment                       :
SeparatorPageFile             :
PrintProcessor                : winprint
Datatype                     : RAW
Shared                        : True
Published                    : False
PermissionsDDL                :
RenderingMode                 :
KeepPrintedJobs               : False
Priority                      : 1
DefaultJobPriority             : 0
StartTime                    : 1000
UntilTime                    : 60
PrinterStatus                 : Paused
JobCount                      : 1
DisableBranchOfficeLogging    :
BranchOfficeOfflineLogSizeMB :

PS C:\> _
```

To answer, complete each statement according to the information presented in the exhibit. Each correct selection is worth one point.

Answer Area

If a user prints a document to the document will ...

Users can submit print jobs to

Hot Area:

Answer Area

If a user prints a document to Printer1, the document will ...

at any time.
at no time.
between 01:00 and 10:00.
between 10:00 and 17:00.

Correct Answer:

Answer Area

If a user prints a document to Printer1, the document will ...

at any time.
at no time.
between 01:00 and 10:00.
between 10:00 and 17:00.

Section: [none]

Explanation

Explanation/Reference:

Explanation:

Answer Area

If a user prints a document to Printer1, the document will ...

at any time.
at no time.
between 01:00 and 10:00.
between 10:00 and 17:00.

QUESTION 25

Your network contains an Active Directory domain named contoso.com. All servers run Windows Server 2012 R2.

You need to add a user named User1 to a group named ServerAdmins. What command should you run?

To answer, select the appropriate options in the answer area.

Answer Area

-identity

Hot Area:

Answer Area

-identity

Add-AdGroupMember	ServerAdmins	ServerAdmins
Add-Member	User1	User1
Set-AdGroup		
Set-AdUser		

Correct Answer:

Answer Area

-identity

Add-AdGroupMember	ServerAdmins	ServerAdmins
Add-Member	User1	User1
Set-AdGroup		
Set-AdUser		

Section: [none]

Explanation

Explanation/Reference:

Explanation:

Answer Area

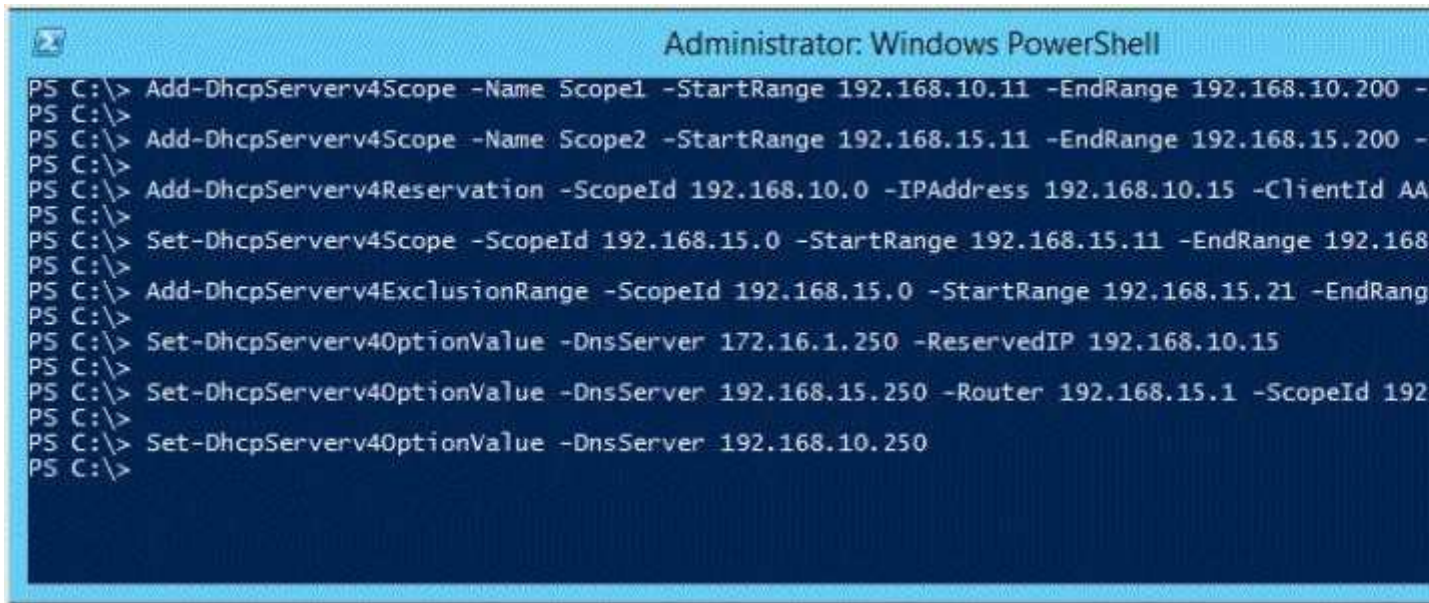
-identity

Add-AdGroupMember	ServerAdmins	ServerAdmins
Add-Member	User1	User1
Set-AdGroup		
Set-AdUser		

QUESTION 26

You have a DHCP server named Server1 that runs Windows Server 2012 R2.

On Server1, you run the commands as shown in the exhibit. (Click the Exhibit button.)



```
Administrator: Windows PowerShell
PS C:\> Add-DhcpServerv4Scope -Name Scope1 -StartRange 192.168.10.11 -EndRange 192.168.10.200 -
PS C:\> Add-DhcpServerv4Scope -Name Scope2 -StartRange 192.168.15.11 -EndRange 192.168.15.200 -
PS C:\> Add-DhcpServerv4Reservation -ScopeId 192.168.10.0 -IPAddress 192.168.10.15 -ClientId AA
PS C:\> Set-DhcpServerv4Scope -ScopeId 192.168.15.0 -StartRange 192.168.15.11 -EndRange 192.168
PS C:\> Add-DhcpServerv4ExclusionRange -ScopeId 192.168.15.0 -StartRange 192.168.15.21 -EndRang
PS C:\> Set-DhcpServerv4OptionValue -DnsServer 172.16.1.250 -ReservedIP 192.168.10.15
PS C:\> Set-DhcpServerv4OptionValue -DnsServer 192.168.15.250 -Router 192.168.15.1 -ScopeId 192
PS C:\> Set-DhcpServerv4OptionValue -DnsServer 192.168.10.250
PS C:\>
```

To answer, complete each statement according to the information presented in the exhibit. Each correct selection is worth one point.

A computer that has a MAC address of AABBCCDDEEFF will get the DNS server address of ... from Server1 when the computer is connected to the 192.168.15.

Server1 can lease ... addresses on the 192.168.15.0/24 segment.

Hot Area:

A computer that has a MAC address of AABBCCDDEEFF will get the DNS server address of ... from Server1 when the computer is connected to the 192.168.15.0/24 segment.

Server1 can lease ... addresses on the 192.168.15.0/24 segment.

Correct Answer:

A computer that has a MAC address of AABBCCDDEEFF will get the DNS server address of ... from Server1 when the computer is connected to the 192.168.15.0/24 segment.

Server1 can lease ... addresses on the 192.168.15.0/24 segment.

Section: [none]
Explanation

Explanation/Reference:
 Explanation:

A computer that has a MAC address of AABBCCDDEEFF will get the DNS server address of ... from Server1 when the computer is connected to the 192.168.15.0/24 segment.

Server1 can lease ... addresses on the 192.168.15.0/24 segment.

QUESTION 27

You have a server named Server1 that runs Windows Server 2012 R2.

You need to perform the following storage configuration tasks on Server1:

- Bring a disk named Disk1 online.

- Defragment a volume named Volume1.
- Remove a disk named Disk2 from a storage pool named Pool1.

Which cmdlet should you use to perform each task?

To answer, drag the appropriate cmdlets to the correct tasks. Each cmdlet may be used once, more than once, or not at all. You may need to drag the split bar between panes or scroll to view content.

Select and Place:

Cmdlets	Answer Area
Initialize-Disk	Bring a disk named Disk1 online. <input type="text" value="Cmdlet"/>
Optimize-Volume	Defragment a volume named Volume1. <input type="text" value="Cmdlet"/>
Remove-PhysicalDisk	Remove a disk named Disk2 from a storage pool named Pool1. <input type="text" value="Cmdlet"/>
Repair-Volume	
Set-Disk	
Set-PhysicalDisk	
Set-StoragePool	
Update-Disk	

Correct Answer:

Cmdlets	Answer Area
Initialize-Disk	Bring a disk named Disk1 online. <input type="text" value="Set-Disk"/>
	Defragment a volume named Volume1. <input type="text" value="Optimize-Volume"/>
Repair-Volume	Remove a disk named Disk2 from a storage pool named Pool1. <input type="text" value="Remove-PhysicalDisk"/>
Set-PhysicalDisk	
Set-StoragePool	
Update-Disk	

Section: [none]

Explanation

Explanation/Reference:

QUESTION 28

Your network contains an Active Directory domain named contoso.com. All domain controllers run Windows Server 2012 R2.

All server are configured to enforce AppLocker policies.

You install a server named Server1.

On Server1, you install an application named appl.exe in a folder located on C:\App1.

You have two domain groups named Group1 and Group2. A user named User1 is a member of Group1 and Group2.

You create a Group Policy object (GPO) named GPO1. You link GPO1 to contoso.com.

You create the executable rules as shown in the exhibit by using the Create Executable Rules wizard. (Click the Exhibit button.)



The screenshot shows the Group Policy Management Editor window. The menu bar includes File, Action, View, and Help. The main area displays a table of AppLocker rules. The table has five columns: Action, User, Name, Condition, and Exception. The rules are as follows:

Action	User	Name	Condition	Exception
Allow	Everyone	(Default Rule) All files located in the Program Files folder	Path	
Allow	Everyone	All files located in the Windows folder	Path	
Allow	BUILTIN\Administrators	(Default Rule) All files	Path	
Allow	CONTOSO\Group1	App1.exe	File Hash	
Deny	Everyone	App1.exe	File Hash	
Allow	CONTOSO\Domain Admins	regedit.exe	File Hash	
Deny	CONTOSO\Group2	regedit.exe	File Hash	

To answer, complete each statement according to the information presented in the exhibit. Each correct selection is worth one point.

Answer Area

User1 can run regedit.exe if ...

User1 can run app1.exe if ...

Hot Area:

Answer Area

User1 can run regedit.exe if ...

User1 is removed from Group2.
User1 is added to the Domain Admins group.
regedit.exe is renamed as registryeditor.exe.

User1 can run app1.exe if ...

app1.exe is renamed as app2.exe.
the Deny rule for app1.exe is removed.
an exception is added to the default rules.
Group1 is added to the Domain Admins group.
User1 is added to the BUILTIN\Administrators group.

Correct Answer:

Answer Area

User1 can run regedit.exe if ...

User1 is removed from Group2.
User1 is added to the Domain Admins group.
regedit.exe is renamed as registryeditor.exe.

User1 can run app1.exe if ...

app1.exe is renamed as app2.exe.
the Deny rule for app1.exe is removed.
an exception is added to the default rules.
Group1 is added to the Domain Admins group.
User1 is added to the BUILTIN\Administrators group.

Section: [none]

Explanation

Explanation/Reference:

Explanation:

Answer Area

User1 can run regedit.exe if ...

User1 is removed from Group2.
User1 is added to the Domain Admins group.
regedit.exe is renamed as registryeditor.exe.

User1 can run app1.exe if ...

app1.exe is renamed as app2.exe.
the Deny rule for app1.exe is removed.
an exception is added to the default rules.
Group1 is added to the Domain Admins group.
User1 is added to the BUILTIN\Administrators group.

QUESTION 29

You have a Hyper-V host named Server1 that runs Windows Server 2012 R2. Server1 hosts 40 virtual machines that run Windows Server 2008 R2. The virtual machines connect to a private virtual switch.

You have a file that you want to copy to all of the virtual machines.

You need to identify to which servers you can copy files by using the Copy-VmFile cmdlet.

What command should you run?

To answer, select the appropriate options in the answer area.

Answer Area

-ComputerName Server1 |

Get-VIntegrationService -Name | where Enabled -eq \$true

Hot Area:

Answer Area

-ComputerName Server1 |

Compare-Vm
Get-Vm
Get-VmHost

Get-VIntegrationService -Name | where Enabled -eq \$true

"Data Exchange Service"
"Guest Service Interface"
"Heartbeat Service"

Correct Answer:

Answer Area

-ComputerName Server1 |

Compare-Vm

Get-Vm

Get-VmHost

Get-VIntegrationService -Name

"Data Exchange Service"

"Guest Service Interface"

"Heartbeat Service"

| where Enabled -eq \$true

Section: [none]

Explanation

Explanation/Reference:

Explanation:

Answer Area

-ComputerName Server1 |

Compare-Vm

Get-Vm

Get-VmHost

Get-VIntegrationService -Name

"Data Exchange Service"

"Guest Service Interface"

"Heartbeat Service"

| where Enabled -eq \$true

QUESTION 30

Your network contains an Active Directory forest. The forest contains a single domain named contoso.com.

AppLocker policies are enforced on all member servers.

You view the AppLocker policy applied to the member servers as shown in the exhibit. (Click the Exhibit button.)

Group Policy Management Editor				
File Action View Help				
Action	User	Name	Condition	Exception
 Deny	CONTOSO\Server Admins	%PROGRAMFILES%\Internet Explorer\iexplore.exe	Path	
 Allow	CONTOSO\Domain Admins	%PROGRAMFILES%\Internet Explorer\iexplore.exe	Path	
 Allow	Everyone	(Default Rule) All files located in the Program Files folder	Path	
 Allow	Everyone	(Default Rule) All files located in the Windows folder	Path	
 Deny	CONTOSO\Domain Users	%PROGRAMFILES%\Internet Explorer\iexplore.exe	Path	
 Allow	BUILTIN\Administrators	(Default Rule) All files	Path	
 Allow	Everyone	Program Files: MICROSOFT® WINDOWS® OPERATING SY...	Publisher	
 Allow	Everyone	Program Files: INTERNET EXPLORER signed by O=MICROS...	Publisher	
 Allow	Everyone	Program Files: MICROSOFT(R) CONNECTION MANAGER si...	Publisher	

To answer, complete each statement according to the information presented in the exhibit. Each correct selection is worth one point.

Answer Area

... can run Internet Explorer on the servers.

... can run Windows Mail on the servers.

Hot Area:

Answer Area

... can run Internet Explorer on the servers.

No one
 Everyone
 Only local users
 Only the members of Domain Admins
 Only the members of a group named ServerAdmins

... can run Windows Mail on the servers.

No one
 Everyone
 Only local users
 Only the members of Domain Admins
 Only the members of a group named ServerAdmins

Correct Answer:

Answer Area

... can run Internet Explorer on the servers.

No one
Everyone
Only local users
Only the members of Domain Admins
Only the members of a group named ServerAdmins

... can run Windows Mail on the servers.

No one
Everyone
Only local users
Only the members of Domain Admins
Only the members of a group named ServerAdmins

Section: [none]

Explanation

Explanation/Reference:

Explanation:

Answer Area

... can run Internet Explorer on the servers.

No one
Everyone
Only local users
Only the members of Domain Admins
Only the members of a group named ServerAdmins

... can run Windows Mail on the servers.

No one
Everyone
Only local users
Only the members of Domain Admins
Only the members of a group named ServerAdmins

QUESTION 31

You have a Hyper-V host named Server1 that runs Windows Server 2012 R2. Server1 hosts 50 virtual machines.

You need to create a script to list all of the virtual machines that have checkpoints and support Secure Boot.

What should you do? To answer, select the appropriate options in the answer area.

Answer Area

| | where |

Hot Area:

Answer Area

| | where |

CheckPoint-Vm	CheckPoint-Vm	{\$_generation -eq 2}
Get-Vm	Get-Vm	{\$_NetworkAdapters -contains "secure"
Get-VmSnapshots	Get-VmSnapshots	{\$_version -eq 3}

Correct Answer:

Answer Area

| | where |

CheckPoint-Vm	CheckPoint-Vm	{\$_generation -eq 2}
Get-Vm	Get-Vm	{\$_NetworkAdapters -contains "secure"
Get-VmSnapshots	Get-VmSnapshots	{\$_version -eq 3}

Section: [none]

Explanation

Explanation/Reference:

Explanation:

Answer Area

| | where |

CheckPoint-Vm	CheckPoint-Vm	{\$_generation -eq 2}
Get-Vm	Get-Vm	{\$_NetworkAdapters -contains "secure"
Get-VmSnapshots	Get-VmSnapshots	{\$_version -eq 3}

QUESTION 32

You have a server named Server1 that runs Windows Server 2012 R2.

You add a new internal SAS disk to Server1.

You need to ensure that the new disk is available to store files.

Which three cmdlets should you run in sequence?

To answer, move the appropriate three cmdlets from the list of cmdlets to the answer area and arrange them in the correct order.

Select and Place:



Correct Answer:



Section: [none]

Explanation

Explanation/Reference:

Explanation:

Box 1: Initialize-Disk

Box 2: New-Partition

Box 3: Format Volume

QUESTION 33

You have a Hyper-V host named Host1. Host1 contains two virtual machines named VM1 and VM2. VM1 is configured as a print server. VM1 runs Windows Server 2008 R2. VM2 is configured as a file server. VM2 runs Windows Server 2012 R2.

You need to migrate all of the printers on VM1 to VM2.

Which actions should you perform on the virtual machines? To answer, drag the appropriate action to the correct servers in the answer area. Each action may be used once, more than once, or not at all. You may

need to drag the split bar between panes or scroll to view content.

Select and Place:

Actions	Answer Area
Run smigdeploy.exe .	VM1 Action
Run printbrm.exe -p all:org .	VM2 Action
Install the Print and Document Services role.	Action
Install the Windows Server Migration Tools feature.	
From the Print Management console, import the printers.	
From the Print Management console, export the printers.	

Correct Answer:

Actions	Answer Area
Run smigdeploy.exe .	VM1 From the Print Management console, export the printers.
Run printbrm.exe -p all:org .	VM2 Install the Print and Document Services role.
	From the Print Management console, import the printers.
Install the Windows Server Migration Tools feature.	

Section: [none]

Explanation

Explanation/Reference:

QUESTION 34

Your network contains an Active Directory domain named contoso.com. All servers run Windows Server 2012 R2. All client computers run Windows 8.

The domain contains a security group named Group1.

You have a Group Policy object (GPO) named GP01. GPO1 is linked to the domain. You need to ensure that only the members of Group1 can run the applications shown in the following table.

Application name	Application file
App1	App1.com
App2	App2.js
App3	App3.appx

Which type of application control policy should you implement for each application? To answer, drag the appropriate rule types to the correct applications. Each rule type may be used once, more than once, or not at all. You may need to drag the split bar between panes or scroll to view content.

Select and Place:

Rule Type	Answer Area
Executable Rule	App1: Rule type
Packaged app Rule	App2: Rule type
Script Rule	App3: Rule type
Windows Installer Rule	

Correct Answer:

Rule Type	Answer Area
	App1: Executable Rule
	App2: Script Rule
	App3: Packaged app Rule
Windows Installer Rule	

Section: [none]

Explanation

Explanation/Reference:

QUESTION 35

Your network contains an Active Directory domain named contoso.com. The domain contains 25 servers. All servers run Windows Server 2012 R2.

You need to create a Windows Firewall rule to prevent administrators from using Internet Explorer to access the Internet while they are logged on interactively to the servers. The solution must not prevent administrators from accessing websites on the internal network.

How should you configure the rule?

To answer, select the appropriate options in the answer area.

Hot Area:

Answer Area

Rule direction:
Inbound
Outbound

Rule type:
Port
Program

Profile:
Domain
Private
Public

Correct Answer:

Answer Area

Rule direction:
Inbound
Outbound

Rule type:
Port
Program

Profile:
Domain
Private
Public

Section: [none]

Explanation

Explanation/Reference:

Explanation:

QUESTION 36

You have a Hyper-V host named Hyperv1 that runs Windows Server 2012 R2. Hyperv1 hosts a virtual machine named Server1. Server1 uses a disk named Server1.vhdx that is stored locally on Hyperv1.

You stop Server1, and then you move Server1.vhdx to an iSCSI target that is located on another server.

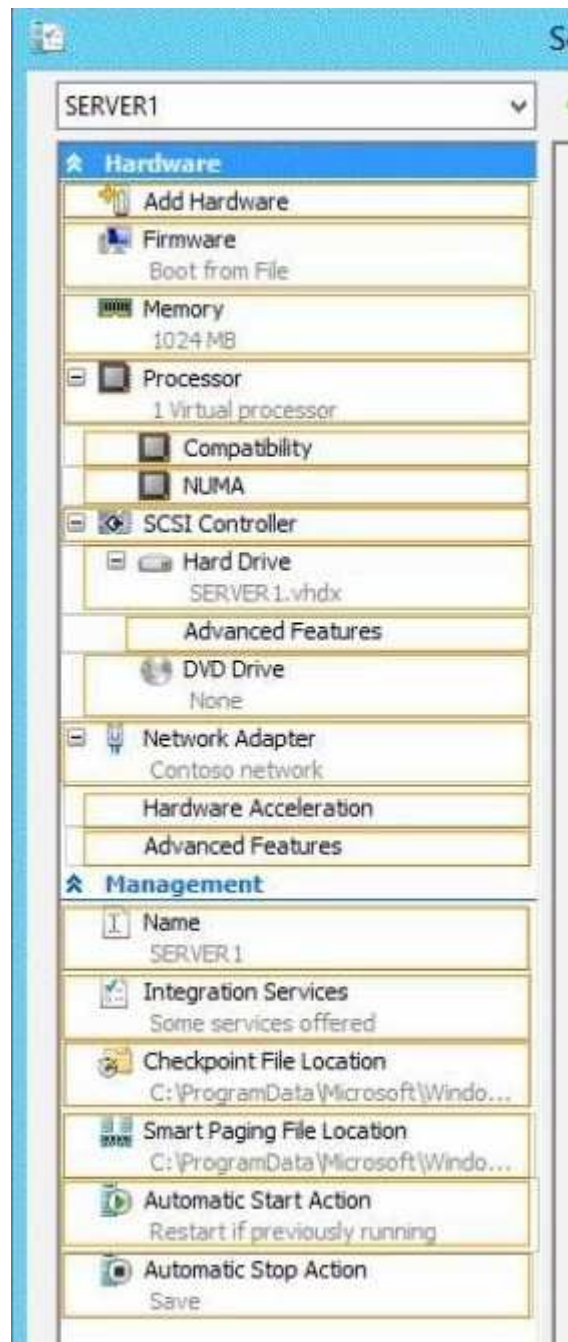
You need to configure Server1 to meet the following requirements:

- Ensure that Server1 can start by using Server1.vhdx.
- Prevent Server1.vhdx from consuming more than 500 IOPS on the iSCSI target.

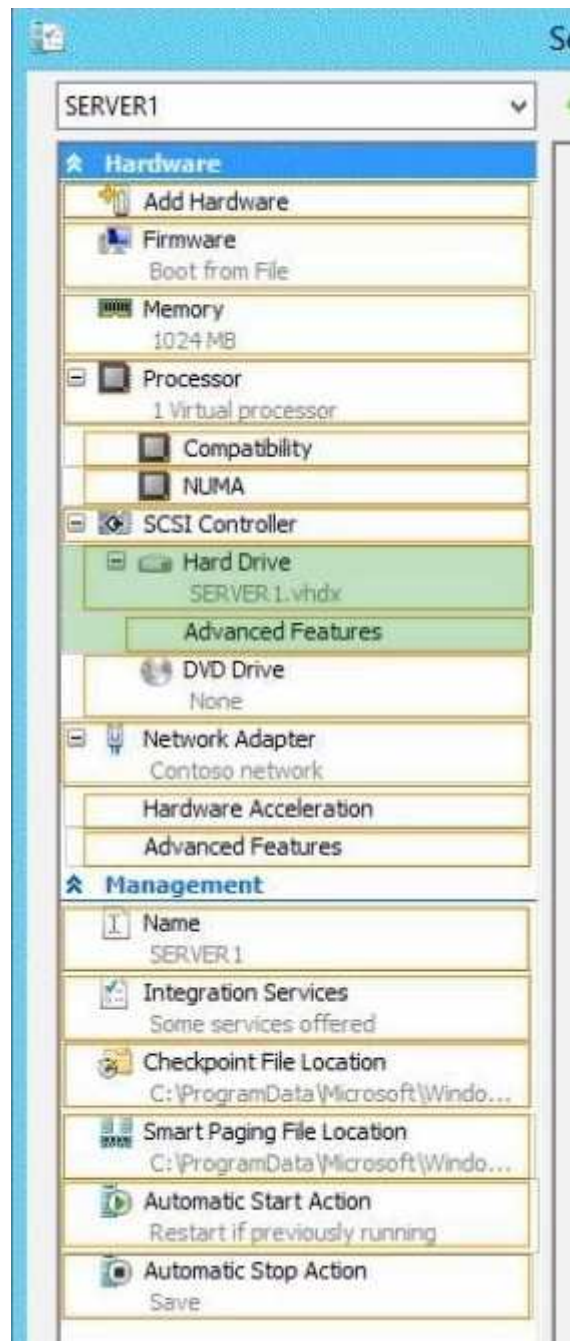
Which two objects should you configure?

To answer, select the appropriate two objects in the answer area.

Hot Area:



Correct Answer:



Section: [none]

Explanation

Explanation/Reference:



<http://www.gratisexam.com/>