

## Microsoft 70-410 Questions & Answers - Testing Engine

Number: 70-410  
Passing Score: 800  
Time Limit: 120 min  
File Version: 24.4



<http://www.gratisexam.com/>



certdumps

Microsoft 70-410 Questions & Answers - Testing Engine

Exam Name: Installing and Configuring Windows Server 2012

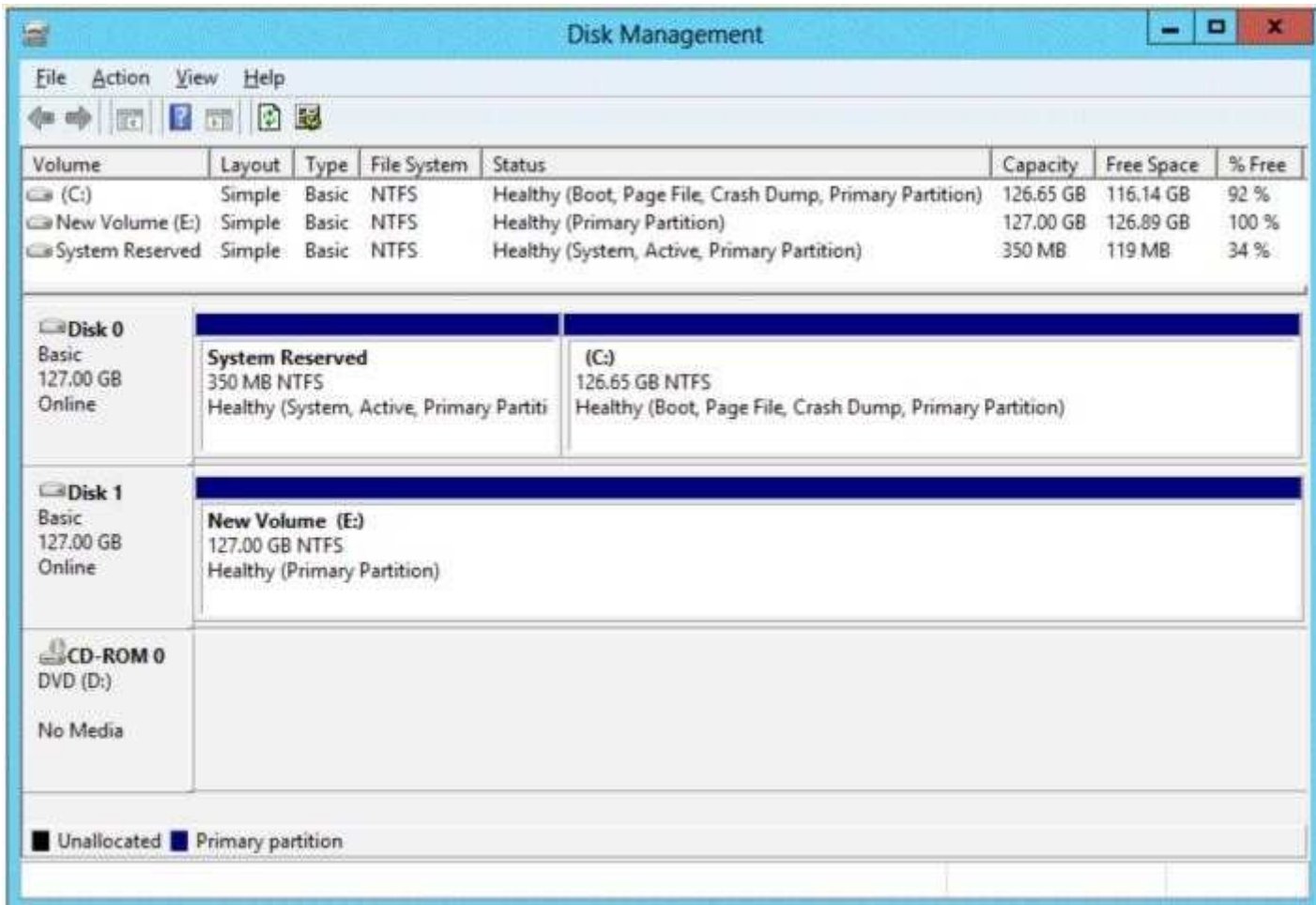
For Full Set of Questions please visit: <http://www.certdumps.com/70-410.html>

## Certdumps

### QUESTION 1

You have a server named Server1 that runs Windows Server 2012. Server1 has the Hyper-V server role installed.

The disks on Server1 are configured as shown in the exhibit. (Click the Exhibit button.)



You create a virtual machine on Server1.

You need to ensure that you can configure a pass-through disk for the virtual machine.

What should you do?

- A. Delete partition E.
- B. Convert Disk 1 to a GPT disk.
- C. Convert Disk 1 to a dynamic disk.
- D. Take Disk 1 offline.

**Correct Answer: D**

**Section: (none)**

**Explanation**

**Explanation/Reference:**

Explanation:

### QUESTION 2

You have a server named Server1 that runs Windows Server 2012. Server1 has the Hyper-V server role installed.

On Server1, you create a virtual machine named VM1. VM1 has a legacy network adapter.

You need to assign a specific amount of available network bandwidth to VM1.

What should you do first?

- A. Remove the legacy network adapter, and then run the Set-VMNetworkAdaptercmdlet.
- B. Add a second legacy network adapter, and then run the Set-VMNetworkAdaptercmdlet.
- C. Add a second legacy network adapter, and then configure network adapter teaming.
- D. Remove the legacy network adapter, and then add a network adapter.

**Correct Answer: D**

**Section: (none)**

**Explanation**

**Explanation/Reference:**

Explanation:

The legacy network adapter doesn't support bandwidth management.

### QUESTION 3

Your network contains an Active Directory domain named adatum.com. The domain contains a server named Server1 that runs Windows Server 2012.

On a server named Core1, you perform a Server Core Installation of Windows Server 2012. You join Core1 to the adatum.com domain.

You need to ensure that you can use Event Viewer on Server1 to view the event logs on Core1.

What should you do on Core1?

- A. Run the Enable-NetFirewallRulecmdlet.
- B. Run sconfig.exe and configure remote management.
- C. Run the Disable-NetFirewallRulecmdlet.
- D. Run sconfig.exe and configure the network settings.

**Correct Answer: A**

**Section: (none)**

**Explanation**

**Explanation/Reference:**

Explanation: Explanation/Reference:

<http://technet.microsoft.com/en-us/library/jj574205.aspx>

▲ To configure Windows Firewall to allow MMC snap-in(s) to connect

- To allow all MMC snap-ins to connect, run

```
Enable-NetFirewallRule -DisplayGroup "Remote Administration"
```

- To allow only specific MMC snap-ins to connect, run:

```
Enable-NetFirewallRule -DisplayGroup "<rulegroup>"
```

Where:

*Rulegroup* is one of the values from the table below, depending on which snap-in you want to connect.

### QUESTION 4

Your network contains a file server named Server1 that runs Windows Server 2012. All client computers run Windows 8.

You need to ensure that when users are connected to the network, they always use local offline files that are cached from Server1.

Which Group Policy setting should you configure?

- A. Configure slow-link mode
- B. Configure Slow link speed
- C. Enable file synchronization on costed networks
- D. Turn on economical application of Administratively assigned Offline Files

**Correct Answer: A**

**Section: (none)**

**Explanation**

**Explanation/Reference:**

Explanation:

#### **QUESTION 5**

You have a server named Server1 that runs Windows Server 2012. Server1 has the Print and Document Services server role installed.

Server1 is connected to two identical print devices.

You need to ensure that users can submit print jobs to the print devices. The solution must ensure that if one print device fails, the print jobs will print automatically on the other print device.

What should you do on Server1?

- A. Add two printers and configure the priority of each printer.
- B. Add one printer and configure printer pooling.
- C. Install the Network Load Balancing (NLB) feature, and then add one printer.
- D. Install the Failover Clustering feature, and then add one printer.

**Correct Answer: B**

**Section: (none)**

**Explanation**

**Explanation/Reference:**

Explanation: Explanation/Reference:

You can create a printing pool to automatically distribute print jobs to the next available printer. A printing pool is one logical printer connected to multiple printers through multiple ports of the print server. The printer that is idle receives the next document sent to the logical printer.

[http://technet.microsoft.com/en-us/library/cc757086\(v=ws.10\).aspx](http://technet.microsoft.com/en-us/library/cc757086(v=ws.10).aspx)

#### **QUESTION 6**

Your network contains an Active Directory domain named contoso.com. The network contains a server named Server1 that runs Windows Server 8 and a server named Server2 that runs Windows Server 2008 R2 Service Pack 1 (SP1). Server1 and Server2 are member server.

You need to ensure that you can manage Server2 from Server1 by using Server Manager.

Which two tasks should you perform? (Each correct answer presents part of the solution. Choose two.)

- A. Install Remote Server Administration Tools on Server1.
- B. Install Windows Management Framework 3.0 on Server2.
- C. Install the Windows PowerShell 2.0 engine on Server1.
- D. Install Microsoft .NET Framework 4 on Server2.
- E. Install Remote Server Administration Tools on Server2.

**Correct Answer: BD**

**Section: (none)**

**Explanation**

**Explanation/Reference:**

Explanation: <http://technet.microsoft.com/en-us/library/hh831456.aspx> Explanation/Reference:

## ▲ Software and configuration requirements

Server Manager is installed by default with all editions of Windows Server 2012. Although you can use Server Manager on Server Core, Server Manager does not run directly on Server Core installation options.

To fully manage remote servers that are running Windows Server 2008 or Windows Server 2008 R2, install the following:

1. .NET Framework 4
2. Windows Management Framework 3.0 The Windows Management Framework 3.0 download package updates VSM to allow Server Manager to collect information about roles and features that are installed on the managed servers. Until then, Server Manager cannot collect this information. **Verify earlier versions run Windows Management Framework 3.0.**
3. The performance update associated with Knowledge Base article 2682011 allows Server Manager to collect performance data from managed servers.

**QUESTION 7**

Your company has a remote office that contains 1,600 client computers on a single subnet.

You need to select a subnet mask for the network that will support all of the client computers. The solution must minimize the number of unused addresses.



<http://www.gratisexam.com/>

Which subnet mask should you select?

- A. 255.255.248.0
- B. 255.255.252.0
- C. 255.255.254.0
- D. 255.255.240.0

**Correct Answer: A**

**Section: (none)**

**Explanation**

**Explanation/Reference:**

Explanation:

**QUESTION 8**

DRAG DROP

You plan to deploy a DHCP server that will support four subnets. The subnets will be configured as shown in the following table.

Subnet name	Number of hosts
Subnet1	50
Subnet2	110
Subnet3	400
Subnet4	525

You need to identify which network ID you should use for each subnet.

What should you identify?

To answer, drag the appropriate network ID to the each subnet in the answer area.

Network IDs	Answer Area
10.10.1.0/26	Subnet1: Network ID
10.10.8.0/22	Subnet2: Network ID
10.10.16.0/25	Subnet3: Network ID
10.10.128.0/23	Subnet4: Network ID

- A.
- B.
- C.
- D.

**Correct Answer:**

**Section: (none)**

**Explanation**

**Explanation/Reference:**

Network IDs	Answer Area
10.10.1.0/26	Subnet1: 10.10.1.0/26
10.10.8.0/22	Subnet2: 10.10.16.0/25
10.10.16.0/25	Subnet3: 10.10.128.0/23
10.10.128.0/23	Subnet4: 10.10.8.0/22

Explanation:

Network IDs	Answer Area
	Subnet1 10.10.1.0/26
	Subnet2 10.10.16.0/25
	Subnet3 10.10.128.0/23
	Subnet4 10.10.8.0/22

### QUESTION 9

Your network contains three servers that run Windows Server 2012. The servers are configured as shown in the following table.

Server name	Server role
Server1	Active Directory Domain Services DHCP Server DNS Server
Server2	Remote Access DHCP Server
Server3	File and Storage Services

Server3 is configured to obtain an IP address automatically. You need to ensure that Server3 only receives an IP address from Server1. The IP address must always be the same.

Which two tasks should you perform? (Each correct answer presents part of the solution. Choose two.)

- A. Create an exclusion on Server1.
- B. Create a filter on Server1.
- C. Create a reservation on Server2.
- D. Create a reservation on Server1.
- E. Create a filter on Server2.

**Correct Answer:** DE

**Section:** (none)

**Explanation**

**Explanation/Reference:**

Explanation:

### QUESTION 10

Your network contains an Active Directory domain named contoso.com. The domain contains a domain controller named DC1 that hosts the primary DNS zone for contoso.com.

All client computers are configured to use DC1 as the primary DNS server.

You need to configure DC1 to resolve any DNS requests that are not for the contoso.com zone by querying the DNS server of your Internet Service Provider (ISP).

What should you configure?

- A. Name server (NS) records
- B. Condition& forwarders

- C. Forwarders
- D. Naming Authority Pointer (NAPTR) DNS resource records (RR)

**Correct Answer:** C

**Section:** (none)

**Explanation**

**Explanation/Reference:**

Explanation:

#### QUESTION 11

Your network contains an Active Directory domain named contoso.com. The domain contains 500 servers that run Windows Server 2012.

You have a written security policy that states the following:

- Only required ports must be open on the servers.
- All of the servers must have Windows Firewall enabled.
- Client computers used by Administrators must be allowed to access all of the ports on all of the servers.
- Client computers used by the Administrators must be authenticated before the client computers can access the servers.

You have a client computer named Computer1 that runs Windows 8.

You need to ensure that you can use Computer1 to access all of the ports on all of the servers successfully.

The solution must adhere to the security policy.

Which three actions should you perform? (Each correct answer presents part of the solution. Choose three.)

- A. On Computer1, create a connection security rule.
- B. On all of the servers, create an outbound rule and select the Allow the connection if it is secure option.
- C. On all of the servers, create an inbound rule and select the Allow the connection if it is secure option.
- D. On Computer1, create an inbound rule and select the Allow the connection if it is secure option.
- E. On Computer1, create an outbound rule and select the Allow the connection if it is secure option.
- F. On all of the servers, create a connection security rule.

**Correct Answer:** ACF

**Section:** (none)

**Explanation**

**Explanation/Reference:**

Explanation: Explanation/Reference:

<http://technet.microsoft.com/en-us/library/cc772017.aspx>

Unlike firewall rules, which operate unilaterally, connection security rules require that both communicating computers have a policy with connection security rules or another compatible IPsec policy.

<http://technet.microsoft.com/en-us/library/cc753463.aspx>

Traffic that matches a firewall rule that uses the Allow connection if it is secure setting bypasses Windows Firewall. The rule can filter the traffic by IP address, port, or protocol. This method is supported on Windows Vista® or Windows Server® 2008.

#### QUESTION 12

Your network contains an Active Directory domain named contoso.com. All user accounts are in an organizational unit (OU) named Employees.

You create a Group Policy object (GPO) named GP1. You link GP1 to the Employees CU.

You need to ensure that GP1 does not apply to the members of a group named Managers.



What should you configure?

- A. The Security settings of Employees
- B. The WMI filter for GP1
- C. The Block Inheritance option for Employees
- D. The Security settings of GP1

**Correct Answer:** D

**Section:** (none)

**Explanation**

**Explanation/Reference:**

Explanation: Explanation/Reference:

[http://technet.microsoft.com/en-us/library/cc786636\(WS.10\).aspx](http://technet.microsoft.com/en-us/library/cc786636(WS.10).aspx)

### QUESTION 13

You have a file server named Server1 that runs Windows Server 2012.

You need to ensure that a user named User1 can use Windows Server Backup to create a complete backup of Server1.

What should you configure?

- A. The local groups by using Computer Management
- B. A task by using Authorization Manager
- C. The User Rights Assignment by using the Local Group Policy Editor
- D. The Role Assignment by using Authorization Manager

**Correct Answer:** A

**Section:** (none)

**Explanation**

**Explanation/Reference:**

Explanation:

### QUESTION 14

Your network contains a server named Server1 that runs Windows Server 2012. Server1 has the Hyper-V server role installed.

Server1 hosts four virtual machines named VM1, VM2, VM3, and VM4.

Server1 is configured as shown in the following table.

Hardware component	Configuration
Processor	Eight quad-core CPUs that have non-uniform memory access (NUMA)
Memory	32 GB of RAM
Disk	Two local 4-TB disks
Network	Eight network adapters VMQ-supported PCI-SIG-supported

You install a network monitoring application on VM2. You need to ensure that all of the traffic sent to VM3 can be captured on VM2.

What should you configure?

- A. NUMA topology
- B. Resource control
- C. resource metering
- D. virtual Machine Chimney
- E. the VLAN ID
- F. Processor Compatibility
- G. the startup order
- H. Automatic Start Action
- I. Integration Services
- J. Port mirroring
- K. Single-root I/O virtualization

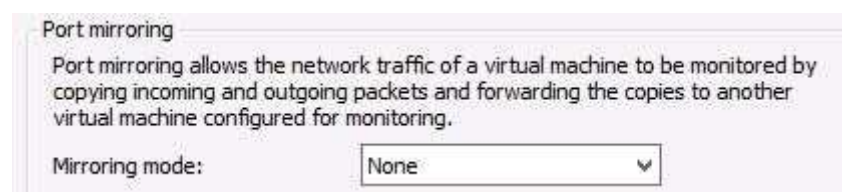
**Correct Answer: J**

**Section: (none)**

**Explanation**

**Explanation/Reference:**

Explanation:



#### QUESTION 15

Your network contains a server named Server1 that runs Windows Server 2012. Server1 has the Hyper-V server role installed.

Server1 hosts four virtual machines named VM1, VM2, VM3, and VM4.

Server1 is configured as shown in the following table.

Hardware component	Configuration
Processor	Eight quad-core CPUs that have non-uniform memory access (NUMA)
Memory	32 GB of RAM
Disk	Two local 4-TB disks
Network	Eight network adapters VMQ-supported PCI-SIG-supported

You need to configure VM4 to track the CPU, memory, and network usage.

What should you configure?

- A. NUMA topology
- B. Resource control
- C. resource metering
- D. Virtual Machine Chimney
- E. the VLAN ID
- F. Processor Compatibility
- G. the startup order

- H. Automatic Start Action
- I. Integration Services
- J. Port mirroring
- K. Single-root I/O virtualization

**Correct Answer: C**

**Section: (none)**

**Explanation**

**Explanation/Reference:**

Explanation: Explanation/Reference:

<http://blogs.technet.com/b/meamcs/archive/2012/05/28/hyper-v-resource-metering-in-windows-server-2012-server-8-beta.aspx>

Metrics collected for each virtual machine using resource metering:

#### **QUESTION 16**

Your network contains an Active Directory domain named contoso.com. All domain controllers run Windows Server 2008 R2. One of the domain controllers is named DC1.

The network contains a member server named Server1 that runs Windows Server 2012.

You need to promote Server1 to a domain controller by using install from media (IFM).

What should you do first?

- A. Create a system state backup of DC1.
- B. Create IFM media on DC1.
- C. Upgrade DC1 to Windows Server 2012.
- D. Run the Active Directory Domain Services Configuration Wizard on Server1.
- E. Run the Active Directory Domain Services Installation Wizard on DC1.

**Correct Answer: C**

**Section: (none)**

**Explanation**

**Explanation/Reference:**

Explanation:

#### **QUESTION 17**

Your network contains an Active Directory domain named adatum.com. The domain contains several thousand member servers that run Windows Server 2012. All of the computer accounts for the member servers are in an organizational unit (OU) named ServersAccounts.

Servers are restarted only occasionally.

You need to identify which servers were restarted during the last two days.

What should you do?

- A. Run dsquery computer and specify the -stalepwd parameter
- B. Run dsquery server and specify the -o parameter.
- C. Run Get-ADComputer and specify the lastlogon property.
- D. Run Get-ADComputer and specify the SearchScope parameter

**Correct Answer: C**

**Section: (none)**

**Explanation**

**Explanation/Reference:**

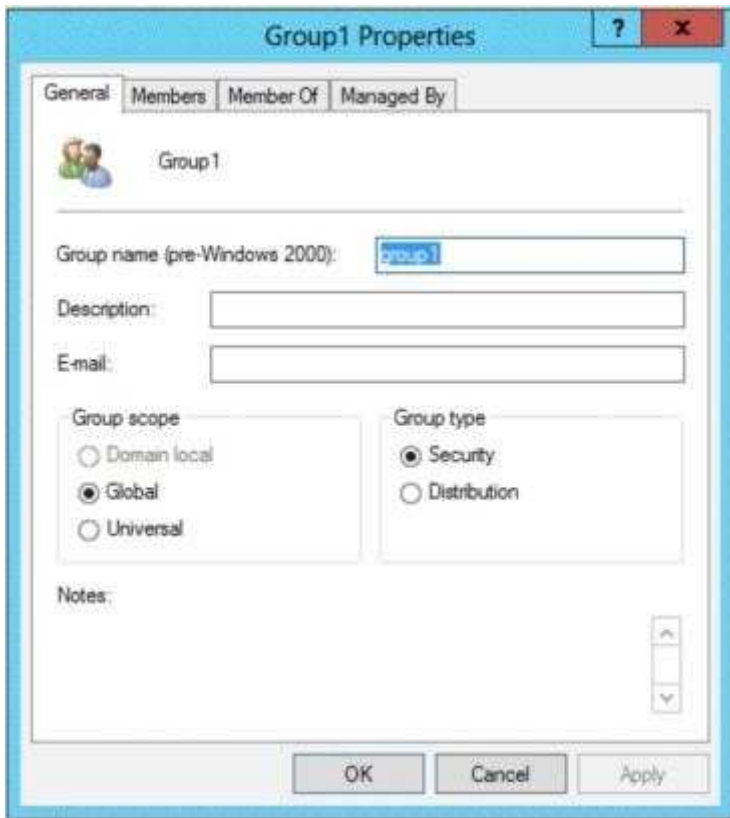
Explanation:

### QUESTION 18

Your network contains an Active Directory domain named contoso.com.

You log on to a domain controller by using an account named Admin1. Admin1 is a member of the Domain Admins group.

You view the properties of a group named Group1 as shown in the exhibit. (Click the Exhibit button.)



Group1 is located in an organizational unit (OU) named OU1.

You need to ensure that you can modify the Security settings of Group1 by using Active Directory Users and Computers.

What should you do from Active Directory Users and Computers?

- A. From the View menu, select Users, Contacts, Groups, and Computers as containers.
- B. Right-click OU1 and select Delegate Control.
- C. From the View menu, select Advanced Features.
- D. Right-click contoso.com and select Delegate Control.

**Correct Answer: C**

**Section: (none)**

**Explanation**

**Explanation/Reference:**

Explanation:

### QUESTION 19

You have a server named Server1 that runs Windows Server 2012.

You need to remove Windows Explorer, Windows Internet Explorer, and all related components and files from Server1.

What should you run on Server1?

- A. Uninstall-WindowsFeature Server-Gui-Mgmt-Infra Remove
- B. Uninstall-WindowsFeature Server-Gui-Shell Remove
- C. msixec.exe /uninstall iexplore.exe /x
- D. msixec.exe /uninstall explorer.exe /x

**Correct Answer:** B

**Section:** (none)

**Explanation**

**Explanation/Reference:**

Explanation:

#### QUESTION 20

You have a server that runs Windows Server 2012.

The server contains the disks configured as shown in the following table.

Disk name	Partition table type	Disk storage type	Unallocated disk space
Disk 0	GPT	Dynamic	2 TB
Disk 1	MBR	Basic	4 TB
Disk 2	GPT	Dynamic	4 TB
Disk 3	GPT	Dynamic	4 TB
Disk 4	MBR	Basic	2 TB

You need to create a volume that can store up to 3 TB of user files. The solution must ensure that the user files are available if one of the disks in the volume fails.

What should you create?

- A. a mirrored volume on Disk 1 and Disk 4
- B. a mirrored volume on Disk 1 and Disk 3
- C. a RAID-S volume on Disk 1, Disk 2, and Disk 3
- D. a spanned volume on Disk 0 and Disk 4

**Correct Answer:** B

**Section:** (none)

**Explanation**

**Explanation/Reference:**

Explanation:

#### QUESTION 21

You have a server named Server1 that runs Windows Server 8.

You connect three new hard disks to Server1.

You need to create a storage space that contains the three disks.

The solution must meet the following requirements:

- Provide fault tolerance if a single disk fails.
- Maximize the amount of files that can be stored in the storage space.

What should you create?

- A. A simple space

- B. A spanned volume
- C. A mirrored space
- D. A parity space

**Correct Answer:** D

**Section:** (none)

**Explanation**

**Explanation/Reference:**

Explanation:

#### QUESTION 22

You perform a Server Core Installation of Windows Server 2012 on a server named Server1.

You need to add a graphical user interface (GUI) to Server1.  
Which tool should you use?

- A. The setup.exe command
- B. The dism.exe command
- C. The imagex.exe command
- D. The Add-WindowsPackage cmdlet

**Correct Answer:** B

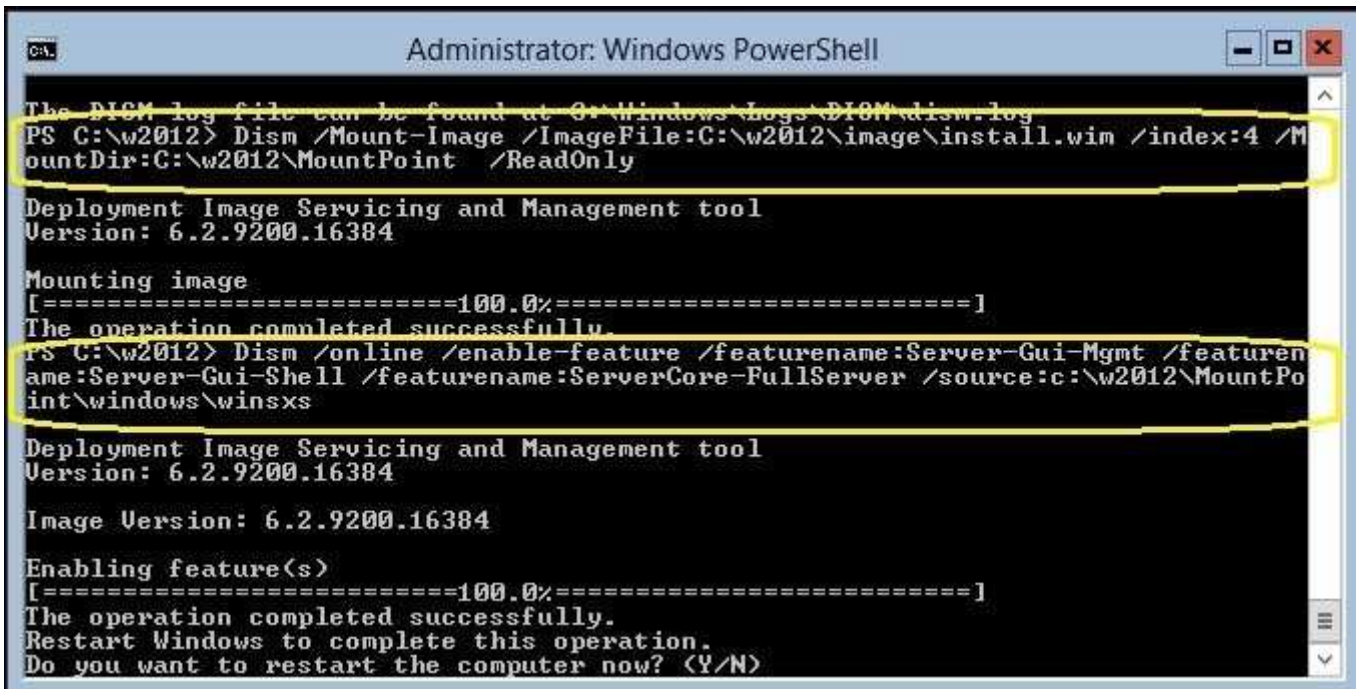
**Section:** (none)

**Explanation**

**Explanation/Reference:**

Explanation:

The DISM command is called by the Add-WindowsFeature command. Here is the syntax for DISM:  
Dism /online /enable-feature /featurename:ServerCore-FullServer /featurename:Server-Gui-Shell /  
featurename:Server-Gui-Mgmt



```
Administrator: Windows PowerShell

The DISM log file can be found at C:\Windows\Logs\DISM\dism.log
PS C:\w2012> Dism /Mount-Image /ImageFile:C:\w2012\image\install.wim /index:4 /M
ountDir:C:\w2012\MountPoint /ReadOnly

Deployment Image Servicing and Management tool
Version: 6.2.9200.16384

Mounting image
[=====100.0%=====]
The operation completed successfully.
PS C:\w2012> Dism /online /enable-feature /featurename:Server-Gui-Mgmt /featuren
ame:Server-Gui-Shell /featurename:ServerCore-FullServer /source:c:\w2012\MountPo
int\windows\winsxs

Deployment Image Servicing and Management tool
Version: 6.2.9200.16384

Image Version: 6.2.9200.16384

Enabling feature(s)
[=====100.0%=====]
The operation completed successfully.
Restart Windows to complete this operation.
Do you want to restart the computer now? (Y/N)
```

#### QUESTION 23

DRAG DROP

Your network contains three servers. The servers are configured as shown in the following table.

Server name	CPU type	Operating system	Installation type
Server1	x86	32-bit Windows Server 2008 Service Pack 2 (SP2)	Full
Server2	X86	32-bit Windows Server 2008 Service Pack 2 (SP2)	Server Core
Server3	x64	64-bit Windows Server 2008 R2	Full

Your company plans to standardize all of the servers on Windows Server 8.

You need to recommend an upgrade path for each server. The solution must meet the following requirements:

- Upgrade the existing operating system whenever possible.
- Minimize hardware purchases.

Which upgrade path should you recommend for each server?

To answer, drag the appropriate upgrade path to each server in the answer area. Each upgrade path may be used once, more than once, or not at all.

Click here to enter text.	<b>Answer Area</b>
<div>Clean installation on new hardware</div> <div>Clean installation on existing hardware</div> <div>Upgrade on existing hardware</div>	<div>Server1</div> <div>Server2</div> <div>Server3</div>

- A.  
B.  
C.  
D.

**Correct Answer:**

**Section: (none)**

**Explanation**

**Explanation/Reference:**

Click here to enter text.	<b>Answer Area</b>
<div>Clean installation on new hardware</div> <div>Clean installation on existing hardware</div> <div>Upgrade on existing hardware</div>	<div>Server1</div> <div>Server2</div> <div>Server3</div>

Explanation:

Click here to enter text.	Answer Area
Clean installation on new hardware	Server1 Clean installation on new hardware
Clean installation on existing hardware	Server2 Clean installation on new hardware
Upgrade on existing hardware	Server3 Upgrade on existing hardware

#### QUESTION 24

Your network contains a file server named Server1 that runs Windows Server 2012.

All client computers run Windows 8.

Server1 contains a folder named Folder1. Folder1 contains the installation files for the company's desktop applications.

A network technician shares Folder1 as Share 1.

You need to ensure that the share for Folder1 is not visible when users browse the network.

What should you do?

- A. From the properties of Folder1, deny the List Folder Contents permission for the Everyone group.
- B. From the properties of Folder1, remove Share1, and then share Folder1 as Share1\$.
- C. From the properties of Folder1, configure the hidden attribute.
- D. From the properties of Share1, configure access-based enumeration.

**Correct Answer: B**

**Section: (none)**

**Explanation**

**Explanation/Reference:**

Explanation:

#### QUESTION 25

Your network contains an Active Directory domain named contoso.com. The domain contains a server named Server1 that runs Windows Server 2012 and a server named Server2 that runs Windows Server 2008 R2 Service Pack 1 (SP1). Both servers are member servers. On Server2, you install all of the software required to ensure that Server2 can be managed remotely from Server Manager.

You need to ensure that you can manage Server2 from Server1 by using Server Manager.

Which two tasks should you perform on Server2? (Each correct answer presents part of the solution. Choose two.)

- A. Run the systempropertiesremote.exe command.
- B. Run the Fnabls-PsRemotingcmdlet.
- C. Run the Enable-PsSessionConfigurationcmdlet.
- D. Run the Configure-SMRemoting.ps1 script.
- E. Run the Set-ExecutionPolicycmdlet.

**Correct Answer: DE**

**Section: (none)**

**Explanation**

**Explanation/Reference:**

Explanation: Explanation/Reference:

To configure Server Manager remote management by using Windows PowerShell On the computer that



you want to manage remotely, open a Windows PowerShell session with elevated user rights. To do this, click Start, click All Programs, click Accessories, click Windows PowerShell, right-click the Windows PowerShell shortcut, and then click Run as administrator. In the Windows PowerShell session, type the following, and then press Enter.

Set-ExecutionPolicy -ExecutionPolicy RemoteSigned

Type the following, and then press Enter to enable all required firewall rule exceptions.

Configure-SMRemoting.ps1 -force -enable

<http://technet.microsoft.com/en-us/library/dd759202.aspx>

## QUESTION 26

### HOTSPOT

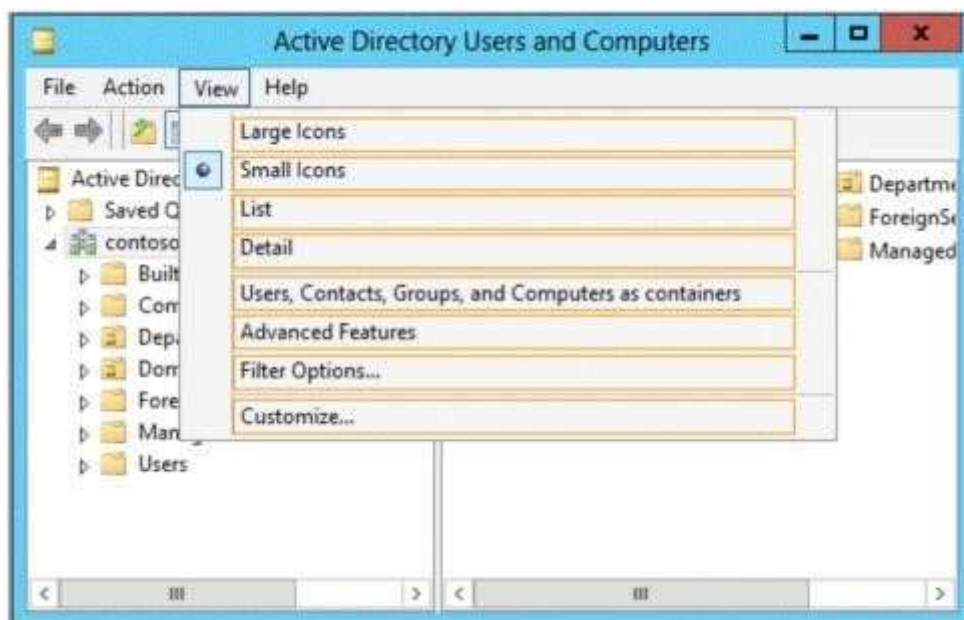
Your network contains an Active Directory domain named contoso.com. The domain contains a print server named Server1 that runs Windows Server 2012.

You share several printers on Server1.

You need to ensure that you can view the printer objects associated to Server1 in Active Directory Users and Computers.

Which option should you select?

To answer, select the appropriate option in the answer area.



- A.
- B.
- C.
- D.

**Correct Answer:**

**Section: (none)**

**Explanation**

**Explanation/Reference:**



Explanation:



#### QUESTION 27

Your network contains an Active Directory domain named contoso.com. The network contains a domain controller named DC1 that has to DNS Server server role installed. DC1 has a standard primary DNS zone for contoso.com.

You need to ensure that only client computers in the contoso.com domain will be able to add their records to the contoso.com zone.

What should you do first?

- A. Modify the Security settings of Dc1.
- B. Modify the Security settings of the contoso.com zone.
- C. Store the contoso.com zone in Active Directory.
- D. Sign the contoso.com zone.

**Correct Answer: D**

**Section: (none)**

## Explanation

### Explanation/Reference:

Explanation:

### QUESTION 28

Your network contains a single Active Directory domain named contoso.com. The network contains two subnets. The subnets are configured as shown in the following table.

Subnet name	Network IP address
MainOffice	172.16.0.0
Warehouse	192.168.1.0

The network contains a member server named Server1 that runs Windows Server 2012. Server1 has the DHCP Server server role installed. Server1 is configured to lease IP addresses to the two subnets.

You discover that computers on the Warehouse subnet that have static IP addresses can communicate with the computers on the MainOffice subnet. Computers on the Warehouse subnet that obtain an IP address automatically can only communicate with other computers on the Warehouse subnet.

You need to ensure that all of the computers on the Warehouse subnet can communicate with the computers on the MainOffice subnet.

Which DHCP option should you configure on Server1?

- A. 003 Router
- B. 011 Resource Location Servers
- C. 020 Nonlocal Source Routing
- D. 019 IP Layer Forwarding

**Correct Answer: A**

**Section: (none)**

**Explanation**

### Explanation/Reference:

Explanation:

### QUESTION 29

Your network contains an Active Directory domain named contoso.com. The network contains 500 client computers that run Windows 2012. All of the client computers connect to the Internet by using a web proxy.

You deploy a server named Server1 that runs Windows Server 2012. Server1 has the DNS Server server role installed.

You configure all of the client computers to use Server1 as their primary DNS server.

You need to prevent Server1 from attempting to resolve Internet host names for the client computers.

What should you do on Server1?

- A. Create a forwarder that points to 169.254.0.1.
- B. Create a primary zone named "GlobalNames".
- C. Remove all root hints.
- D. Create a zone delegation for GlobalNames.contoso.com.

**Correct Answer: C**

**Section: (none)**

**Explanation**

### Explanation/Reference:

Explanation: Root Hints are a vital cog in configuring your DNS Server. If your server receives a query for an unknown domain, then the root hints give a clue as to where to search for the answer. If you operate internal root DNS servers on a private network that is not connected to the Internet, edit or replace root hints to point to your own internal root DNS servers. Delete root hints from your internal root DNS servers.

### QUESTION 30

Your company has a remote office that contains 600 client computers on a single subnet.

You need to select a subnet mask for the network that will support all of the client computers.

The solution must minimize the number of unused addresses.

Which subnet mask should you select?

- A. 255.255.252.0
- B. 255.255.254.0
- C. 255.255.255.0
- D. 255.255.255.128

**Correct Answer: A**

**Section: (none)**

**Explanation**

**Explanation/Reference:**

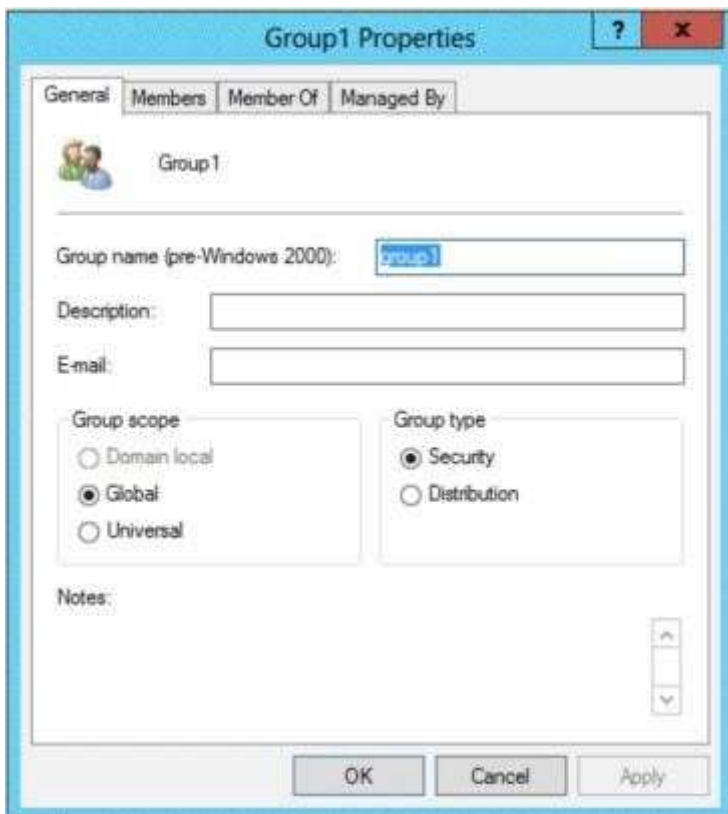
Explanation:

### QUESTION 31

Your network contains an Active Directory domain named contoso.com.

You log on to a domain controller by using an account named Admin1. Admin1 is a member of the Domain Admins group.

You view the properties of a group named Group1 as shown in the exhibit. (Click the Exhibit button.)



Group1 is located in an organizational unit (OU) named OU1.

You need to ensure that users from Group1 can modify the Security settings of OU1 only.

What should you do from Active Directory Users and Computers?

- A. Modify the Managed By settings on OU1.
- B. Right-click contoso.com and select Delegate Control.
- C. Right-click OU1 and select Delegate Control.
- D. Modify the Security settings of Group1.

**Correct Answer: C**

**Section: (none)**

**Explanation**

**Explanation/Reference:**

Explanation:

### QUESTION 32

Your network contains an Active Directory forest. The forest contains two domains named contoso.com and corp.contoso.com. The forest contains four domain controllers. The domain controllers are configured as shown in the following table.

Name	Domain	Operating system	Configuration
DC1	contoso.com	Windows Server 2008 R2	PDC emulator Infrastructure master RID master
DC2	contoso.com	Windows Server 2012	Domain naming master Schema master Global catalog
DC3	corp.contoso.com	Windows Server 2008 R2	PDC emulator Infrastructure master RID master
DC4	corp.contoso.com	Windows Server 2012	Global catalog

All domain controllers are DNS servers.

In the corp.contoso.com domain, you plan to deploy a new domain controller named DC5.

You need to identify which domain controller must be online to ensure that DCS can be promoted successfully to a domain controller.

Which domain controller should you identify?

- A. DC1
- B. DC2
- C. DC3
- D. DC4

**Correct Answer: C**

**Section: (none)**

**Explanation**

**Explanation/Reference:**

Explanation:

### QUESTION 33

Your network contains an Active Directory forest named contoso.com. All domain controllers currently run Windows Server 2008 R2.

You plan to install a new domain controller named DC4 that runs Windows Server 8.

The new domain controller will have the following configurations:

- Schema master
- Global catalog server
- DNS Server server role
- Active Directory Certificate Services server role

You need to identify which configurations cannot be fulfilled by using the Active Directory Installation Wizard.



<http://www.gratisexam.com/>

Which two configurations should you identify? (Each correct answer presents part of the solution. Choose two.)

- A. Transfer the schema master.
- B. Enable the global catalog server.
- C. Install the DNS Server role.
- D. Install the Active Directory Certificate Services role.

**Correct Answer:** AD

**Section:** (none)

**Explanation**

**Explanation/Reference:**

Explanation: Explanation/Reference:

AD Installation Wizard will automatically install DNS and allows for the option to set it as a global catalog server. ADCS and schema must be done separately.

Specify domain controller capabilities and site information

☒ Domain Name System (DNS) server

☒ Global Catalog (GC)

☐ Read only domain controller (RODC)

Site name:

Default-First-Site-Name

Type the Directory Services Restore Mode (DSRM) password

Password:

\*

Confirm password:

\*

#### QUESTION 34

Your network contains an Active Directory domain named contoso.com. The domain contains two domain controllers. The domain controllers are configured as shown in the following table.

Name	Operating system	Operation master role
DC1	Windows Server 2012	Domain naming master Schema master
DC2	Windows Server 2008 R2	PDC emulator RID master Infrastructure master

In the perimeter network, you install a new server named Server1 that runs Windows Server 2012. Server1 is in a workgroup.

You need to perform an offline domain join of Server1 to the contoso.com domain.

What should you do first?

- A. Transfer the PDC emulator role to Dc1.
- B. Run the djoin.exe command.
- C. Run the dsadd.exe command.
- D. Transfer the infrastructure master role to DC1.

**Correct Answer: B**

**Section: (none)**

**Explanation**

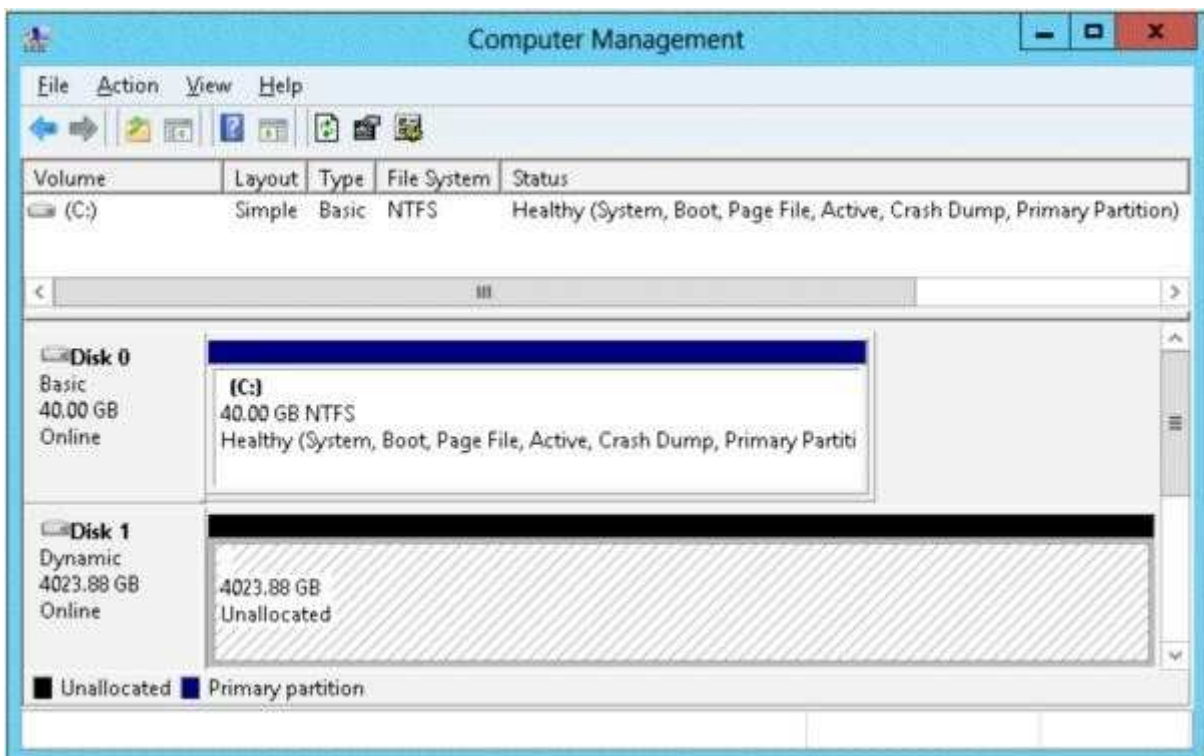
**Explanation/Reference:**

Explanation:

#### QUESTION 35

You have a server named Server2 that runs Windows Server 2012. Server2 has the Hyper-V server role installed.

The disks on Server2 are configured as shown in the exhibit. (Click the Exhibit button.)



You create a virtual machine on Server2 named VM1.

You need to ensure that you can configure a pass-through disk for VM1.

What should you do?

- A. Convert Disk 1 to a basic disk.
- B. Take Disk 1 offline.
- C. Create a partition on Disk 1.
- D. Convert Disk 1 to a MBR disk.

**Correct Answer:** D

**Section:** (none)

**Explanation**

**Explanation/Reference:**

Explanation: Explanation/Reference:

<http://blogs.technet.com/b/askcore/archive/2008/10/24/configuring-pass-through-disks-in-hyper-v.aspx>

The pass-through disk must be offline.

### QUESTION 36

You have a file server named Server1 that runs Windows Server 8.

Server1 has following hardware configurations:

- 16GB of RAM
- A single quad-core CPU
- Three network teams that have two network adapters each

You add additional CPUs and RAM to Server1. You repurpose Server1 as a virtualization host. You install the Hyper-V server role on Server1. You need to create four external virtual switches in Hyper-V.

Which cmdlet should you run first?

- A. Add-VMNetworkAdapter
- B. Add-NetLbfoTeamNic
- C. Remove-NetLbfoTeam
- D. Set-NetAdapter

**Correct Answer:** D

**Section:** (none)

**Explanation**

**Explanation/Reference:**

Explanation:

### QUESTION 37

Your network contains an Active Directory domain named contoso.com. The domain contains a domain controller named DC1 that runs Windows Server 2012.

You need to configure a central store for the Group Policy Administrative Templates.

What should you do on Dc1?

- A. From Server Manager, create a storage pool.
- B. From Windows Explorer, copy the PolicyDefinitions folder to the SYSVOL\contoso.com\policies folder.
- C. From Server Manager, add the Group Policy Management feature.
- D. From Windows Explorer, copy the PolicyDefinitions folder to the NETLOGON share.

**Correct Answer:** B

**Section:** (none)

**Explanation**

**Explanation/Reference:**



Explanation:

### QUESTION 38

Your network contains an Active Directory domain named adatum.com.

The computer accounts for all member servers are located in an organizational unit (OU) named Servers.

You link a Group Policy object (GPO) to the Servers OU.

You need to ensure that the domain's Backup Operators group is a member of the local Backup Operators group on each member server.

The solution must not remove any groups from the local Backup Operators groups.

What should you do?

- A. Add a restricted group named adatum\Backup Operators. Add Backup Operators to the This group is a member of list.
- B. Add a restricted group named adatum\Backup Operators. Add Backup Operators to the Members of this group list.
- C. Add a restricted group named Backup Operators. Add adatum\Backup Operators to the This group is a member of list.
- D. Add a restricted group named Backup Operators. Add adatum\Backup Operators to the Members of this group list.

**Correct Answer:** A

**Section:** (none)

**Explanation**

**Explanation/Reference:**

Explanation:

### QUESTION 39

Your network contains an Active Directory domain named contoso.com.

All servers run Windows Server 2012.

An application named Appl.exe is installed on all client computers. Multiple versions of App1.exe are installed on different client computers. Appl.exe is digitally signed.

You need to ensure that only the latest version of Appl.exe can run on the client computers.

What should you create?

- A. An application control policy packaged app rule
- B. A software restriction policy certificate rule
- C. An application control policy Windows Installer rule
- D. An application control policy executable rule

**Correct Answer:** D

**Section:** (none)

**Explanation**

**Explanation/Reference:**

Explanation:

### QUESTION 40

You have a server named Server1 that runs Windows Server 2012.

You add a 4-TB disk named Disk 5 to Server1.

You need to ensure that you can create a 3-TB volume on Disk 5.

What should you do?

- A. Create a storage pool.
- B. Convert the disk to a dynamic disk.
- C. Create a VHD, and then attach the VHD.
- D. Convert the disk to a GPT disk.

**Correct Answer:** D

**Section:** (none)

**Explanation**

**Explanation/Reference:**

Explanation:

#### QUESTION 41

You have a server named Server1 that has a Server Core installation of Windows Server 2008 R2.

Server1 has the DHCP Server server role and the File Server server role installed.

You need to upgrade Server1 to Windows Server 8 with the graphical user interface (GUI).

The solution must meet the following requirements:

- Preserve the server roles and their configurations.
- Minimize Administrative effort.

What should you do?

- A. On Server1, run setup.exe from the Windows Server 8 installation media and select Server with a GUI.
- B. Start Server1 from the Windows Server 8 installation media and select Server Core Installation. When the installation is complete, add the Server Graphical Shell feature.
- C. Start Server1 from the Windows Server 8 installation media and select Server with a GUI.
- D. On Server1, run setup.exe from the Windows Server 8 installation media and select Server Core Installation. When the installation is complete, add the Server Graphical Shell feature.

**Correct Answer:** D

**Section:** (none)

**Explanation**

**Explanation/Reference:**

Explanation:

#### QUESTION 42

Your network contains a Windows Server 2012 image named Server12.wim. Server12.wim contains the images shown in the following table.

Index number	Image name
1	Windows Server 2012 Server Standard Core
2	Windows Server 2012 Server Standard
3	Windows Server 2012 Server Datacenter Core
4	Windows Server 2012 Server Datacenter

Server12.wim is located in C:\.

You need to enable the Windows Server Migration Tools feature in the Windows Server 2012 Server Datacenter image. You want to achieve this goal by using the minimum amount of Administrative effort.

Which command should you run first?

- A. `dism.exe /mount-wim /wimfile:c:\Server12.wim /index:4 /mountdir:c:\mount`

- B. imagex.exe /capture c: c:\Server12.wim "windows server 2012server datacenter"
- C. dism.exe /image: c:\Server12.wim /enable-feature /featurename: servermigration
- D. imagex.exe /apply c:\Server12.wim 4 c:\

**Correct Answer:** A

**Section:** (none)

**Explanation**

**Explanation/Reference:**

Explanation:

#### QUESTION 43

Your network contains an Active Directory domain named contoso.com. The network contains 500 client computers that run Windows 2012. All of the client computers connect to the Internet by using a web proxy. You deploy a server named Server1 that runs Windows Server 2012.

Server1 has the DNS Server server role installed. You configure all of the client computers to use Server1 as their primary DNS server. You need to prevent Server1 from attempting to resolve Internet host names for the client computers.

What should you do on Server1?

- A. Configure the Security settings of the contoso.com zone.
- B. Remove all root hints.
- C. Create a primary zone named
- D. Create a primary zone named
- E. Create a primary zone named "GlobalNamesj±.
- F. Create a forwarder that points to 169.254.0.1.
- G. Create a stub zone named j°rootj±.
- H. Create a zone delegation for GlobalNames.contoso.com.

**Correct Answer:** BC

**Section:** (none)

**Explanation**

**Explanation/Reference:**

Explanation:

#### QUESTION 44

You have a server that runs Windows Server 2012. The server contains the disks configured as shown in the following table.

Disk name	Partition table type	Disk storage type	Unallocated disk space
Disk 0	GPT	Dynamic	2 TB
Disk 1	MBR	Basic	4 TB
Disk 2	GPT	Dynamic	4 TB
Disk 3	GPT	Dynamic	4 TB
Disk 4	MBR	Basic	2 TB

You need to create a volume that can store up to 3 TB of user files. The solution must ensure that the user files are available if one of the disks in the volume fails.

What should you create?

- A. a storage pool on Disk 2 and Disk 3
- B. a spanned volume on Disk 2 and Disk 3

- C. a mirrored volume on Disk 1 and Disk 3
- D. a mirrored volume on Disk 2 and Disk 3
- E. a RAID-5 volume on Disk 1, Disk 2, and Disk 3
- F. a storage pool on Disk 1 and Disk 3
- G. a spanned volume on Disk 0 and Disk 4
- H. a mirrored volume on Disk 1 and Disk 4

**Correct Answer:** DE

**Section:** (none)

**Explanation**

**Explanation/Reference:**

Explanation:

#### QUESTION 45

##### HOTSPOT

Your network contains a server named Server1 that runs Windows Server 2012. App1 has the Print and Document Services server role installed.

All client computers run Windows 8.

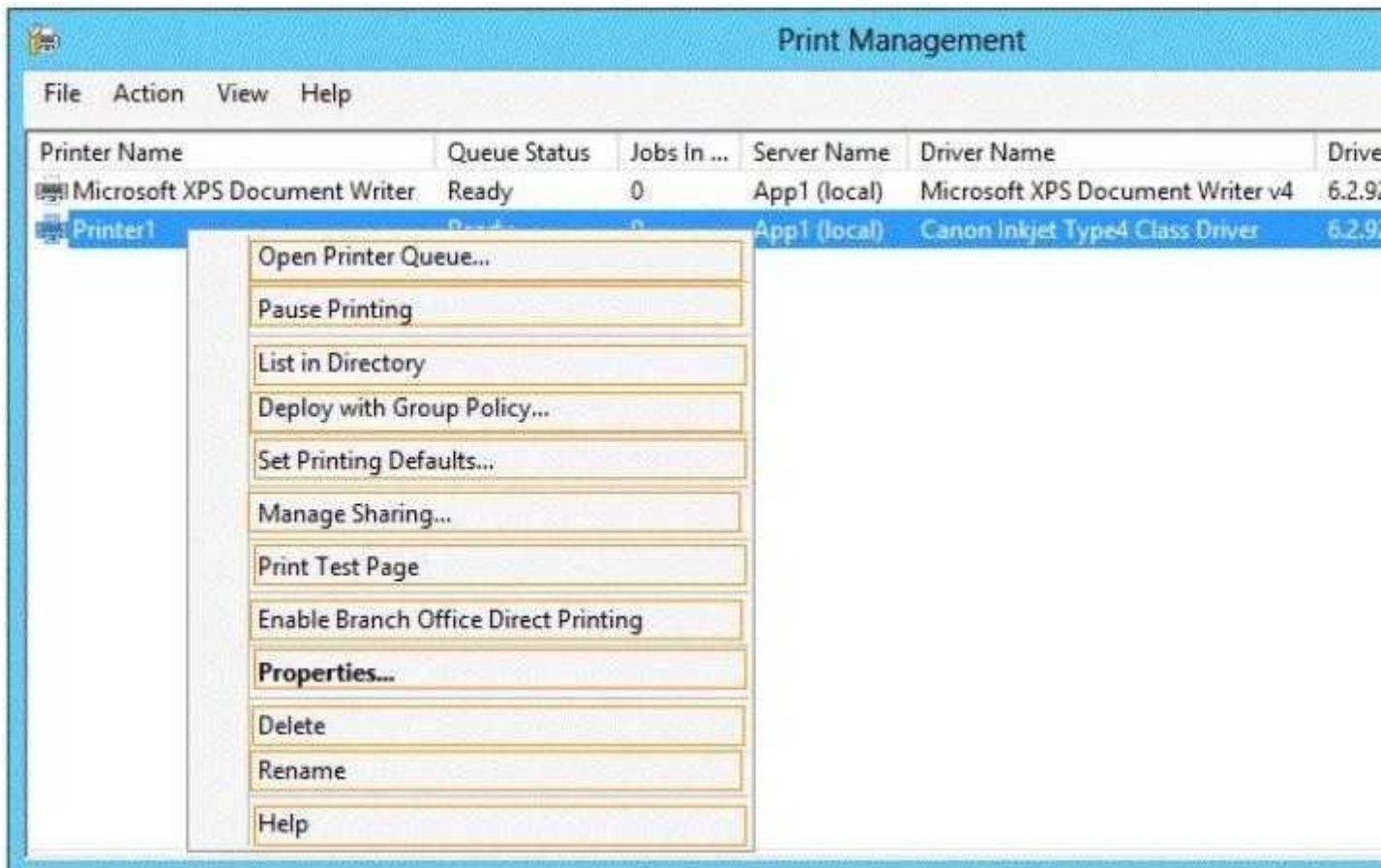
The network contains a network-attached print device named Printer1.

From App1, you share Printer1.

You need to ensure that users who have connected to Printer1 previously can print to Printer1 if App1 fails.

What should you configure?

To answer, select the appropriate option in the answer area.



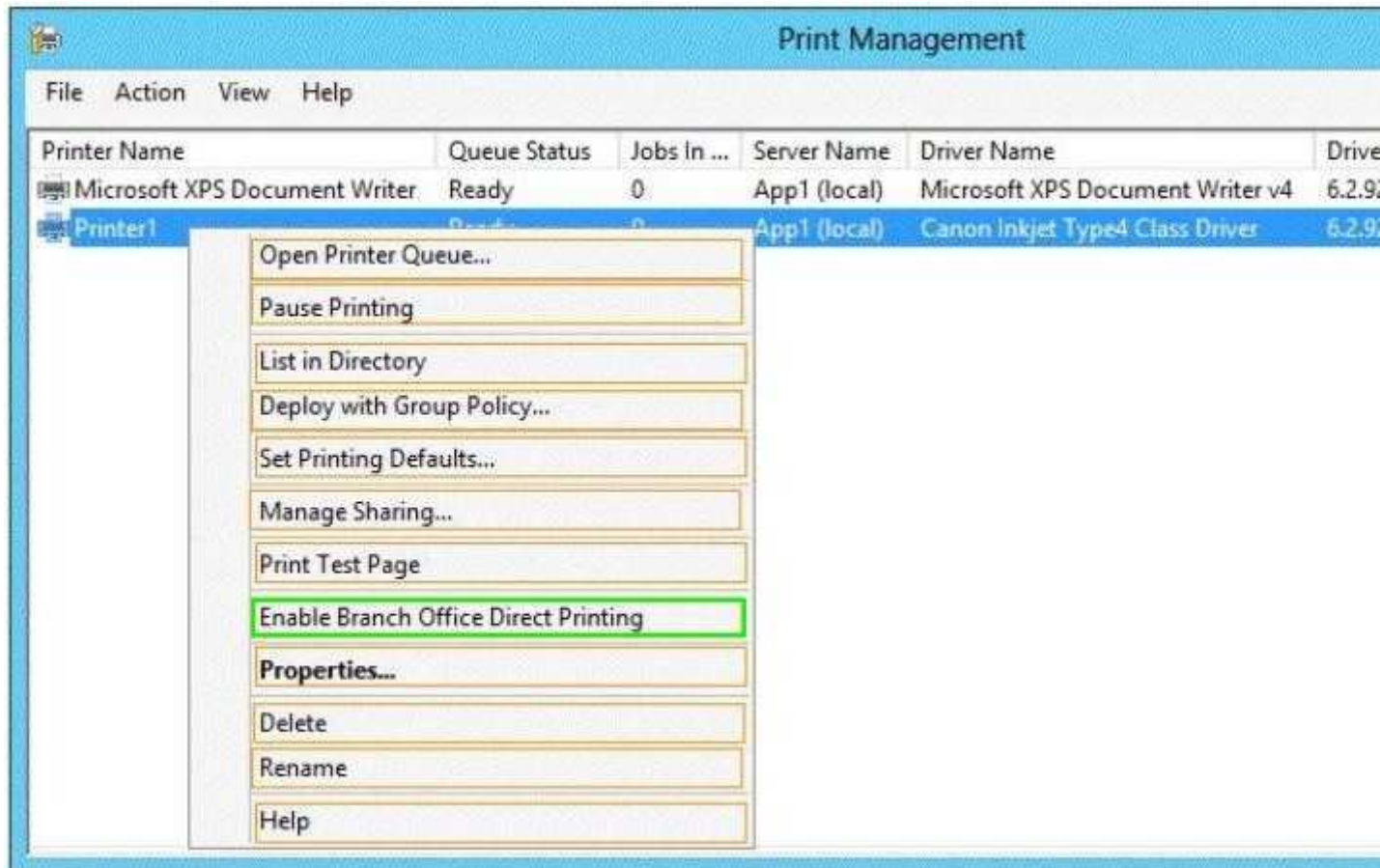
- A.
- B.
- C.
- D.

**Correct Answer:**

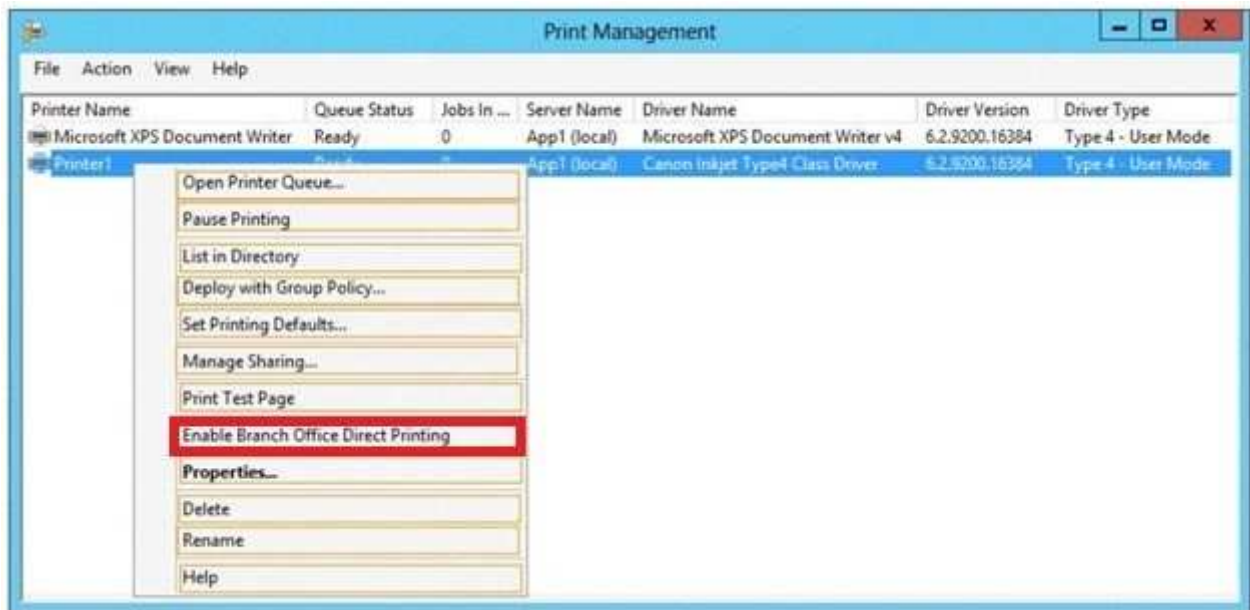
**Section: (none)**

**Explanation**

**Explanation/Reference:**



**Explanation:**



#### QUESTION 46

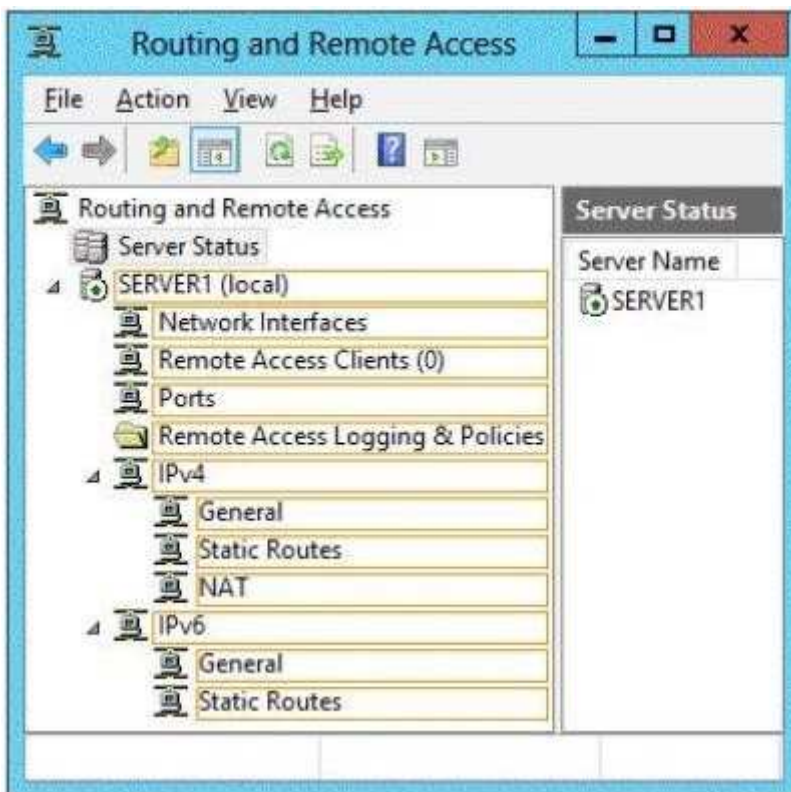
##### HOTSPOT

You have a server named Server1. Server1 runs Windows Server 2012.

Server1 has two network adapters and is located in a perimeter network.

You need to install a DHCP Relay Agent on Server1.

Which node should you use to add the DHCP Relay Agent? To answer, select the appropriate node in the answer area.



- A.
- B.

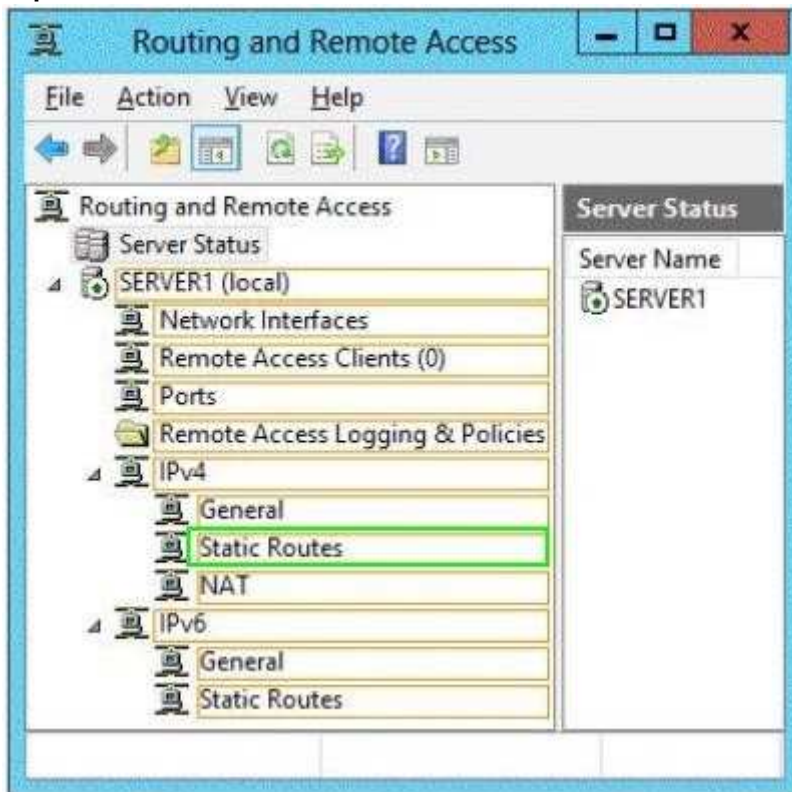
- C.
- D.

**Correct Answer:**

**Section: (none)**

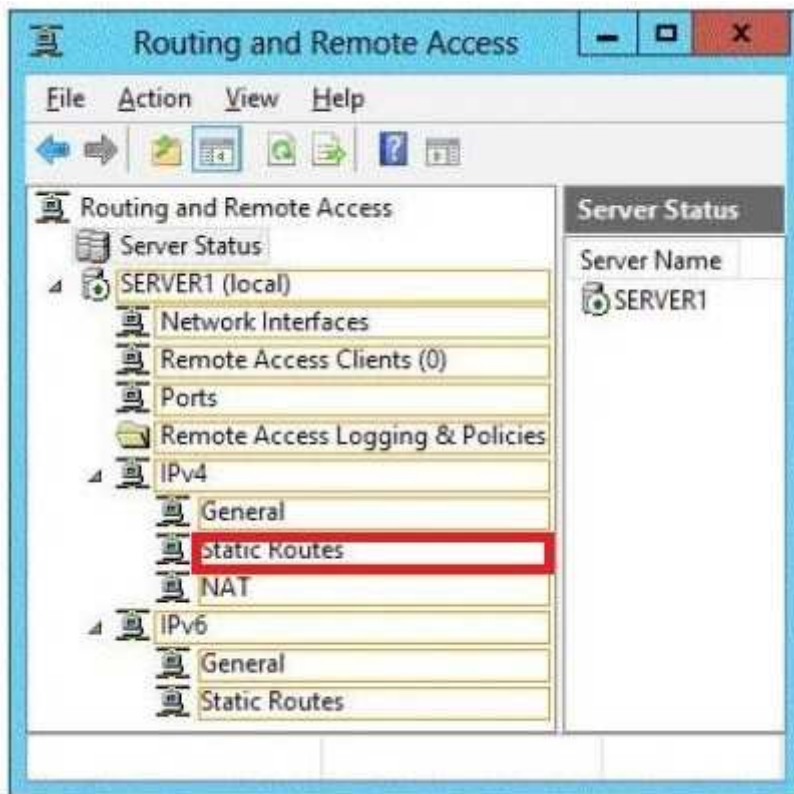
**Explanation**

**Explanation/Reference:**



**Explanation:**





#### QUESTION 47

Your network contains an active directory domain named Contoso.com. The domain contains 100 user accounts that reside in an organizational unit (OU) named OU1.

You need to ensure that user named user1 can link and unlink Group Policy Objects(GPOs) to OU1. The solution must minimize the number of permissions assigned to user1.

What should you do?

- A. Run the Delegation of Control Wizard on the Policies containers
- B. Run the Set-GPPermission cmdlet
- C. Run the Delegation of Control Wizard on OU1
- D. Modify the permission on the user1 account

**Correct Answer: C**

**Section: (none)**

**Explanation**

**Explanation/Reference:**

Explanation:

#### QUESTION 48

Your network contains an Active Directory domain named contoso.com. The domain contains a server named Server1. Server1 runs Windows Server 2012. You create a group Managed Service Account named gservice1.

You need to configure a service named Service1 to run as the gservice1 account.

How should you configure Service1?

- A. From the Services console, configure the General settings.
- B. From Windows PowerShell, run Set-Service and specify the -StartupType parameter.
- C. From a command prompt, run sc.exe and specify the config parameter.
- D. From a command prompt, run sc.exe and specify the privs parameter.



**Correct Answer:** C

**Section:** (none)

**Explanation**

**Explanation/Reference:**

Explanation:

**QUESTION 49**

Your network contains an Active Directory domain named adatum.com. The domain contains a server named Server1 that runs Windows Server 2012.

On a server named Core1, you perform a Server Core Installation of Windows Server 2012. You join Core1 to the adatum.com domain.

You need to ensure that you can use Event Viewer on Server1 to view the event logs on Core1.

What should you do on Core1?

- A. Run the Disable NetFirewallRule cmdlet.
- B. Install Remote Server Administration Tools (RSAT).
- C. Install Windows Management Framework.
- D. Run the Enable-NetFirewallRule cmdlet.

**Correct Answer:** D

**Section:** (none)

**Explanation**

**Explanation/Reference:**

Explanation:

**QUESTION 50**

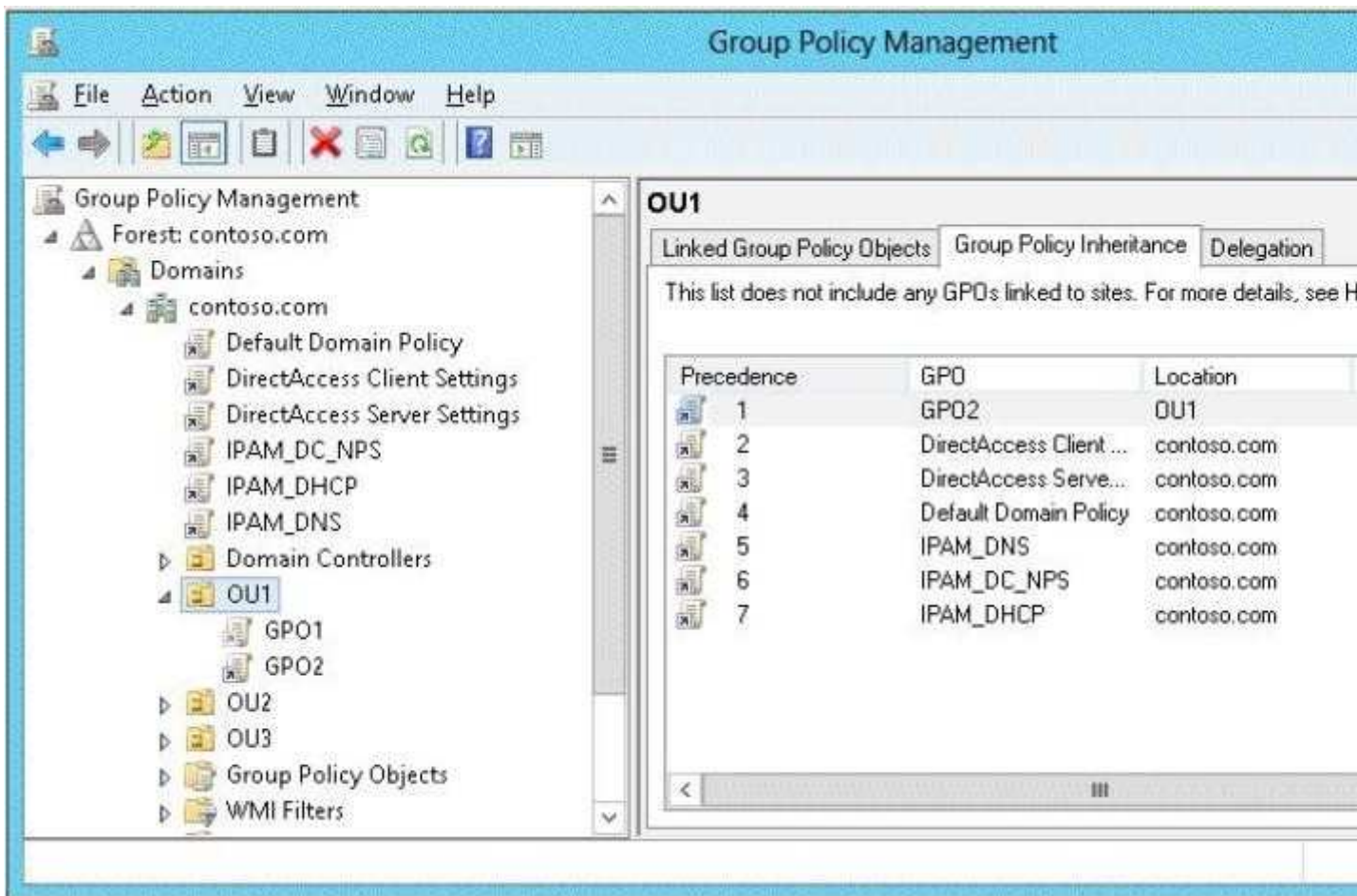
Your network contains an Active Directory domain named contoso.com.

All user accounts in the sales department reside in an organizational unit (OU) named OU1.

You have a Group Policy object (GPO) named GPO1. GPO1 is used to deploy a logon script to all of the users in the sales department.

You discover that the logon script does not run when the sales users log on to their computers.

You open Group Policy Management as shown in the exhibit. (Click the Exhibit button.)



You need to ensure that the logon script in GPO1 is applied to the sales users.

What should you do?

- A. Modify the Delegation settings of GPO1.
- B. Modify the link order of GPO1.
- C. Enforce GPO1.
- D. Enable the link of GPO1.

**Correct Answer: C**

**Section: (none)**

**Explanation**

**Explanation/Reference:**

Explanation:

#### QUESTION 51

You have a server named Server1 that runs Windows Server 2012. Server1 has following storage spaces:

- Data
- Users
- Backups
- Primordial

You add an additional hard disk to Server1.

You need to identify which storage space contains the new hard disk.

Which storage space contains the new disk?

- A. Data
- B. Primordial
- C. Users
- D. Backups

**Correct Answer:** B

**Section:** (none)

**Explanation**

**Explanation/Reference:**

Explanation:

#### **QUESTION 52**

Your company has a main office and two branch offices. The offices connect to each other by using a WAN link.

In the main office, you have a server named Server1 that runs Windows Server 2012.

Server1 is configured to use an IPv4 address only.

You need to assign an IPv6 address to Server1. The IP address must be private and routable.

Which IPv6 address should you assign to Server1?

- A. ff00:3fff:65df:145c:dca8::82a4
- B. 2001:ab32:145c::32cc:401b
- C. fe80:ab32:145c::32cc:401b
- D. fd00:ab32:14:ad88:ac:58:abc2:4

**Correct Answer:** D

**Section:** (none)

**Explanation**

**Explanation/Reference:**

Explanation: Explanation/Reference:

pg 266 Chapter 6 : Installing and Configuring Windows Server 2012 Unique local addresses

Unique local addresses are IPv6 addresses that are private to an organization in the same way that private addresses--such as 10.x.x.x, 192.168.x.x, or 172.16.0.0 - 172.31.255.255--can be used on an IPv4 network.

Unique local addresses, therefore, are not routable on the IPv6 Internet in the same way that an address like 10.20.100.55 is not routable on the IPv4 Internet.

A unique local address is always structured as follows:

The first 8 bits are always 11111101 in binary format. This means that a unique local address always begins with FD and has a prefix identifier of FD00::/8.

#### **QUESTION 53**

You have a server named Server1. Server1 runs Windows Server 2012 and has the File and Storage Services server role installed.

You attach four 500-GB disks to Server1.

You need to configure the storage to meet the following requirements:

- Storage for an application named Application1 must be provided. Application1 requires 20 GB and will require a maximum of 800 GB in three years.
- Storage for an application named Application2 must be provided. Application2 requires 20 GB and will require a maximum of 900 GB in three years.
- The solution must provide the ability to dynamically add storage without requiring configuration changes to the applications.
- The storage must be available if a single disk fails.

Which two actions should you perform? (Each correct answer presents part of the solution. Choose two.)

- A. From File and Storage Services, create virtual disks by using fixed provisioning.
- B. From File and Storage Services, create a storage pool that uses all four disks.
- C. From Disk Management, create two new mirror volumes that use two disks each.
- D. From Disk Management, create a new RAID-5 volume that uses all four disks.
- E. From File and Storage Services, create virtual disks by using thin provisioning.

**Correct Answer:** AB

**Section:** (none)

**Explanation**

**Explanation/Reference:**

Explanation:

#### QUESTION 54

Your network contains an Active Directory forest named contoso.com. The forest contains a child domain named europe.contoso.com. The europe.contoso.com child domain contains a server named Server1 that runs Windows Server 2012.

You install the DHCP Server server role on Server1.

You have access to the administrative accounts shown in the following table.

Account name	Account location	Member of
Admin1	Server1	Server1\Administrators
Admin2	Europe.contoso.com	Europe\Domain Admins
Admin3	Europe.contoso.com	Europe\Administrators
Admin4	Contoso.com	Contoso\Enterprise Admins

You need to authorize Server1.

Which user account should you use?

- A. Admin1
- B. Admin2
- C. Admin3
- D. Admin4

**Correct Answer:** D

**Section:** (none)

**Explanation**

**Explanation/Reference:**

Explanation:

#### QUESTION 55

Your network contains multiple subnets.

On one of the subnets, you deploy a server named Server1 that runs Windows Server 2012.

You install the DNS Server server role on Server1, and then you create a standard primary zone named contoso.com.

You need to ensure that client computers can resolve single-label names to IP addresses.

What should you do first?

- A. Create a reverse lookup zone.
- B. Convert the contoso.com zone to an Active Directory-integrated zone.
- C. Configure dynamic updates for contoso.com.
- D. Create a GlobalNames zone.

**Correct Answer:** D

**Section:** (none)

**Explanation**

**Explanation/Reference:**

Explanation:

#### **QUESTION 56**

You have a server named Server1 that runs Windows Server 2012. Server1 has six network adapters. Two of the network adapters are connected to a network named LAN1, two of the network adapters are connected to a network named LAN2, and two of the network adapters are connected to a network named LAN3.

You create a network adapter team named Team1 from the two adapters connected to LAN1.

You create a network adapter team named Team2 from the two adapters connected to LAN2.

A company policy states that all server IP addresses must be assigned by using a reserved address in DHCP.

You need to identify how many DHCP reservations you must create for Server1.

How many reservations should you identify?

- A. 3
- B. 4
- C. 6
- D. 8

**Correct Answer:** B

**Section:** (none)

**Explanation**

**Explanation/Reference:**

Explanation:

#### **QUESTION 57**

You perform a Server Core Installation of Windows Server 2012 on a server named Server1.

You need to add a graphical user interface (GUI) to Server1.

Which tool should you use?

- A. The Add-WindowsPackage cmdlet
- B. The ocsetup.exe command
- C. The Add-WindowsFeature cmdlet
- D. The Install-RoleService cmdlet

**Correct Answer:** C

**Section:** (none)

**Explanation**

**Explanation/Reference:**

Explanation:

**QUESTION 58****DRAG DROP**

Your network contains an Active Directory domain named contoso.com. The domain contains a server named Server1. Server1 runs a Server Core installation of Windows Server 2012.

You install the DNS Server server role on Server1.

You need to perform the following configurations on Server1:

- Create an Active Directory-integrated zone named adatum.com.
- Send unresolved DNS client queries for other domain suffixes to the DNS server of your company's Internet Service Provider (ISP).

Which Windows PowerShell cmdlets should you use?

To answer, drag the appropriate cmdlet to the correct configuration in the answer area. Each cmdlet may be used once, more than once, or not at all. You may need to drag the split bar between panes or scroll to view content.

Cmdlets	Answer Area
Add-DNSServerDirectoryPartition	Create an Active Directory-integrated zone named adatum.com.
Add-DNSServerPrimaryZone	
Set-DNSServer	Send unresolved DNS client queries for other domain suffixes to the DNS server of your company's Internet Service Provider (ISP).
Set-DNSServerForwarder	
Set-DNSServerDSSetting	
Set-DNSServerSetting	

- A.
- B.
- C.
- D.

**Correct Answer:**

**Section: (none)**

**Explanation**

**Explanation/Reference:**

Cmdlets	Answer Area
Add-DNSServerDirectoryPartition	Create an Active Directory-integrated zone named adatum.com.
Add-DNSServerPrimaryZone	
Set-DNSServer	Send unresolved DNS client queries for other domain suffixes to the DNS server of your company's Internet Service Provider (ISP).
Set-DNSServerForwarder	
Set-DNSServerDSSetting	
Set-DNSServerSetting	

Explanation:

Create an Active Directory-integrated zone named adatum.com.	Add-DNSServerPrimaryZone
Send unresolved DNS client queries for other domain suffixes to the DNS server of your company's Internet Service Provider (ISP).	Set-DNSServerForwarder

#### QUESTION 59

Your network contains an Active Directory domain named contoso.com. The network contains 500 client computers that run Windows 8. All of the client computers connect to the Internet by using a web proxy.

You deploy a server named Server1 that runs Windows Server 2012. Server1 has the DNS Server server role installed.

You configure all of the client computers to use Server1 as their primary DNS server.

You need to prevent Server1 from attempting to resolve Internet host names for the client computers.

What should you do on Server1?

- A. Create a primary zone named ".".
- B. Configure the Security settings of the contoso.com zone.
- C. Create a zone delegation for GlobalNames.contoso.com.
- D. Create a stub zone named "root".

**Correct Answer: B**

**Section: (none)**

**Explanation**

**Explanation/Reference:**

Explanation:

#### QUESTION 60

Your network contains an Active Directory domain named contoso.com. The domain contains two servers named Server1 and Server2 that run Windows Server 2012.

You create a security template named Template1 by using the Security Templates snap-in.

You need to apply Template1 to Server2.

Which tool should you use?

- A. System Configuration
- B. Authorization Manager
- C. Computer Management
- D. Local Security Policy

**Correct Answer:** A

**Section:** (none)

**Explanation**

**Explanation/Reference:**

Explanation:

#### **QUESTION 61**

You have a server named Server1 that runs Windows Server 2012.

Server1 has 2 dual-core processors and 16 GB of RAM.

You install the Hyper-V server role in Server1.

You plan to create two virtual machines on Server1.

You need to ensure that both virtual machines can use up to 8 GB of memory. The solution must ensure that both virtual machines can be started simultaneously.

What should you configure on each virtual machine?

- A. Dynamic Memory
- B. NUMA topology
- C. Memory weight
- D. Resource Control

**Correct Answer:** A

**Section:** (none)

**Explanation**

**Explanation/Reference:**

Explanation:

#### **QUESTION 62**

Your network contains an active directory domain named contoso.com. The domain contains a domain controller named DCS. DCS has a server core installation of windows server 2012.

You need to uninstall Active Directory from DCS manually.

Which tool should you use?

- A. The Remove-WindowsFeature cmdlet
- B. the dsamain.exe command
- C. the ntdsutil.exe command
- D. the Remove-ADComputer cmdlet

**Correct Answer:** C

**Section:** (none)

**Explanation**

**Explanation/Reference:**

Explanation:

#### **QUESTION 63**

HOTSPOT



You have a server named Server1 that runs Windows Server 2012.

Several users are members of the local Administrators group.

You need to ensure that all local administrators receive User Account Control (UAC) prompts when they run a Microsoft Management Console (MMC).

Which setting should you modify from the Local Security Policy?

To answer, select the appropriate settings in the answer area.



- A.
- B.
- C.
- D.

**Correct Answer:**

**Section: (none)**

**Explanation**

**Explanation/Reference:**



**Explanation:**



**QUESTION 64**  
DRAG DROP

Your network contains an Active Directory domain named contoso.com. The domain contains a server named Server1. Server1 runs Windows Server 2012 and is configured as the only domain controller.

You need to retrieve a list of all the user accounts. The list must include the last time each user was authenticated successfully.

Which Windows PowerShell command should you run?

To answer, drag the appropriate cmdlet or property to the correct locations to complete the PowerShell command in the answer area. Each cmdlet or property may be used once, more than once, or not at all. You may need to drag the split bar between panes or scroll to view content.

Get-ADComputer		-Properties *	-filter *	fl name,	
Get-ADUser					
Set-ADComputer					
Set-ADUser					
Credentials					
LastLogonDate					
LogonHours					

- A.
- B.
- C.
- D.

**Correct Answer:**

**Section:** (none)

**Explanation**

**Explanation/Reference:**

Get-ADComputer	Get-ADUser	-Properties *	-filter *	fl name,	LastLogonDate
Get-ADUser					
Set-ADComputer					
Set-ADUser					
Credentials					
LastLogonDate					
LogonHours					

Explanation:

Get-ADComputer

Get-ADUser

-Properties \* -filter \* | fl name,

LastLogonDate

Set-ADComputer

Set-ADUser

Credentials

LogonHours



<http://www.gratisexam.com/>