

ExamCertify 70-410 V2012-12-14 By Sogetsu - CactusJack review

Number: 70-410
Passing Score: 800
Time Limit: 120 min
File Version: 1.1



<http://www.gratisexam.com/>

**Fixed incorrect answer in Q69.
CactusJack 14-Dec-2012**

**Updated some questions text and fixed some incorrect answers.
CactusJack 01-Dec-2012**

**Updated few more question based on ExamCollection comments.
Riot 27-Nov-2012**

**Updated few more questions.
Sogetsu 18-Nov-2012**

**Corrected some answers according to the vce in 70-417 and technet;
Added some explanations;
Fixed typos.
This is no way 100% correct, please be smart and find out answers on your own.
Sogetsu 16-Nov-2012**

Source of this exam is <http://www.examcertify.com/>

If you see on the real exam or on this questions server windows 8, they mean server 2012 !!!!!



**FIXED PROBLEM WHERE SOME QUESTIONS WERE MADE AS MULTIPLE BUT WERE SINGLE
(Sorry guys is my first vce and created it manually, more to come ;-))**

Exam A

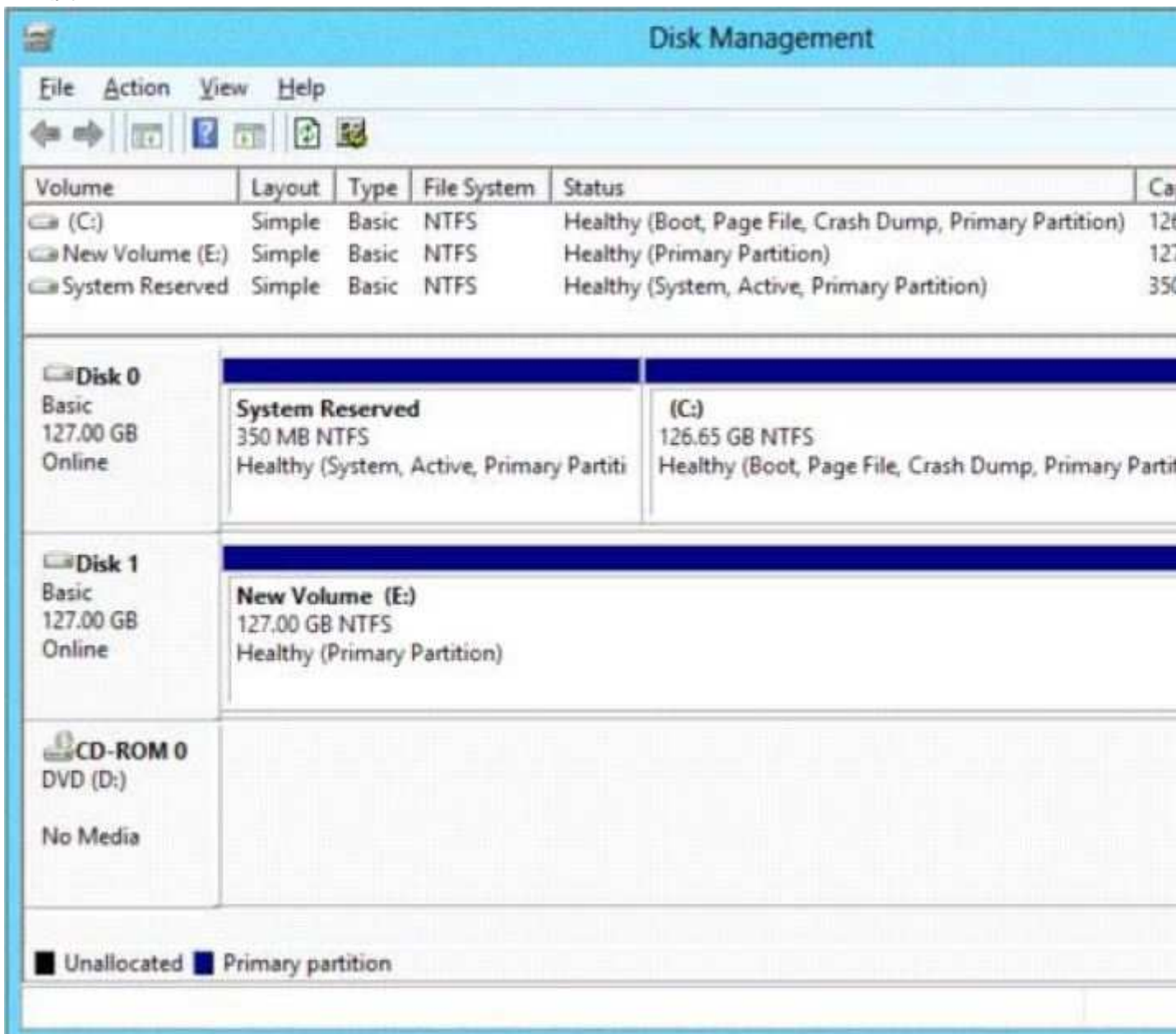
QUESTION 1

You have a server named Server1 that runs Windows Server 2012. Server1 has the Hyper-V server role installed. The disks on Server1 are configured as shown in the exhibit. (Click the Exhibit button.)

You create a virtual machine on Server1. You need to ensure that you can configure a pass-through disk for the virtual machine.

What should you do?

Exhibit:



- A. Delete partition E.
- B. Convert Disk 1 to a GPT disk
- C. Convert Disk 1 to a dynamic disk.
- D. Take Disk 1 offline.

Correct Answer: D

Section: (none)

Explanation

Explanation/Reference:

QUESTION 2

You have a server named Server1 that runs Windows Server 2012. Server1 has the Hyper-V server role installed. You have fixed-size VHD named Files.vhd.

You need to make the contents in Files.vhd available to several virtual machines.

The solution must meet the following requirements:

- Ensure that if the contents are changed on any virtual machine, the changes are not reflected on the other virtual machines.
- Minimize the amount of disk space used.

What should you do?

- A. Create a dynamically expanding VHDX. Transfer the information from Files.vhd to the new VHDX file.
- B. Create a fixed-size VHDX. Transfer the information from Files.vhd to the new VHDX file.
- C. Convert Files.vhd to a dynamically expanding VHD.
- D. Create differencing VHD5 that use Files.vhd as the parent disk

Correct Answer: D

Section: (none)

Explanation

Explanation/Reference:

QUESTION 3

You have a server named Server1 that runs Windows Server 2012. Server1 has the Hyper-V server role installed. On Server1, you create a virtual machine named VM1. VM1 has a legacy network adapter.

You need to assign a specific amount of available network bandwidth to VM1.

What should you do first?

- A. Remove the legacy network adapter, and then run the Set-VMNetworkAdaptercmdlet.
- B. Add a second legacy network adapter, and then run the Set-VMNetworkAdaptercmdlet.
- C. Add a second legacy network adapter, and then configure network adapter teaming.
- D. Remove the legacy network adapter, and then add a network adapter

Correct Answer: D

Section: (none)

Explanation

Explanation/Reference:

The legacy network adapter doesn't support bandwidth management.

QUESTION 4

Your network contains an Active Directory domain named adatum.com. The domain contains a server named Server1 that runs Windows Server 2012. On a server named Core1, you perform a Server Core Installation of Windows Server 2012. You join Core1 to the adatum.com domain.

You need to ensure that you can use Event Viewer on Server1 to view the event logs on Core1.

What should you do on Core1?

- A. Run the Enable-NetFirewallRulecmdlet.
- B. Run sconfig.exe and configure remote management
- C. Run the Disable-NetFirewallRulecmdlet.
- D. Run sconfig.exe and configure the network settings.

Correct Answer: A

Section: (none)

Explanation

Explanation/Reference:

<http://technet.microsoft.com/en-us/library/jj574205.aspx>

▲ To configure Windows Firewall to allow MMC snap-in(s) to connect

- To allow all MMC snap-ins to connect, run

```
Enable-NetFirewallRule -DisplayGroup "Remote Administration"
```

- To allow only specific MMC snap-ins to connect, run:

```
Enable-NetFirewallRule -DisplayGroup "<rulegroup>"
```

Where:

Rulegroup is one of the values from the table below, depending on which snap-in you want to connect.

MMC snap-in	Rule group
Event Viewer	Remote Event Log Management
Services	Remote Services Management

QUESTION 5

Your network contains a file server named Server1 that runs Windows Server 2012. All client computers run Windows 8.

You need to ensure that when users are connected to the network, they always use local offline files that are cached from Server1.

Which Group Policy setting should you configure?

- A. Configure slow-link mode.
- B. Configure Slow link speed
- C. Enable file synchronization on costed networks
- D. Turn on economical application of Administratively assigned Offline Files.

Correct Answer: A

Section: (none)

Explanation

Explanation/Reference:

QUESTION 6

Your network contains an Active Directory domain named contoso.com. All servers run either Windows Server 2008 R2 or Windows Server 2012. All client computers run either Windows 7 or Windows 8. The domain contains a member server named Server1 that runs Windows Server 2012. Server1 has the File and Storage Services server role installed. On Server1, you create a share named Share1.

You need to ensure that users can use Previous Versions to restore the files in Share1.

What should you configure on Server1?

- A. The Shadow Copies settings
- B. A Windows Server Backup schedule
- C. A data recovery agent
- D. The Recycle Bin properties

Correct Answer: A

Section: (none)

Explanation

Explanation/Reference:

The screenshot shows the Windows Server 2012 Disk Management console. The 'Shadow Copies' tab is selected for the C:\ volume. The dialog box displays the following information:

Volume	Next Run Time	Shares	Used
\\?\Vol...	Disabled	0	
C:\	Disabled	2	

Below the table, there are buttons for 'Enable', 'Disable', and 'Settings...'. The 'Shadow copies of selected volume' section shows a list of shadow copies with the following details:

Shadow Copy Name	Created	Size	Used
10/1/2012 8:40 AM			

Buttons for 'Create Now', 'Delete Now', and 'Revert...' are available for the selected shadow copy. The 'OK' and 'Cancel' buttons are at the bottom of the dialog box.

QUESTION 7

You have a server named Server1 that runs Windows Server 2012. Server1 has the Print and Document Services server role installed. Server1 is connected to two identical print devices.

You need to ensure that users can submit print jobs to the print devices.

The solution must ensure that if one print device fails, the print jobs will print automatically on the other print device.

What should you do on Server1?

- A. Add two printers and configure the priority of each printer.
- B. Add one printer and configure printer pooling.
- C. Install the Network Load Balancing (NLB) feature, and then add one printer.
- D. Install the Failover Clustering feature, and then add one printer

Correct Answer: B

Section: (none)

Explanation

Explanation/Reference:

[http://technet.microsoft.com/en-us/library/cc757086\(v=ws.10\).aspx](http://technet.microsoft.com/en-us/library/cc757086(v=ws.10).aspx)

QUESTION 8

Your network contains a server named Server1 that runs Windows Server 2012. Server1 has the Print and Document Services server role installed. You connect a new print device to the network. The marketing department and the sales department will use the print device.

You need to provide users from both departments with the ability to print to the network print device.

The solution must ensure that if there are multiple documents queued to print, the documents from the sales users print before the documents from the marketing users.

What should you do on Server1?

- A. Add two printers. Modify the priorities of each printer and the security settings of each printer
- B. Add two printers and configure printer pooling
- C. Add one printer and configure printer pooling.
- D. Add one printer. Modify the printer priority and the security settings

Correct Answer: A

Section: (none)

Explanation

Explanation/Reference:

[http://technet.microsoft.com/en-us/library/cc738090\(v=ws.10\).aspx](http://technet.microsoft.com/en-us/library/cc738090(v=ws.10).aspx)

QUESTION 9

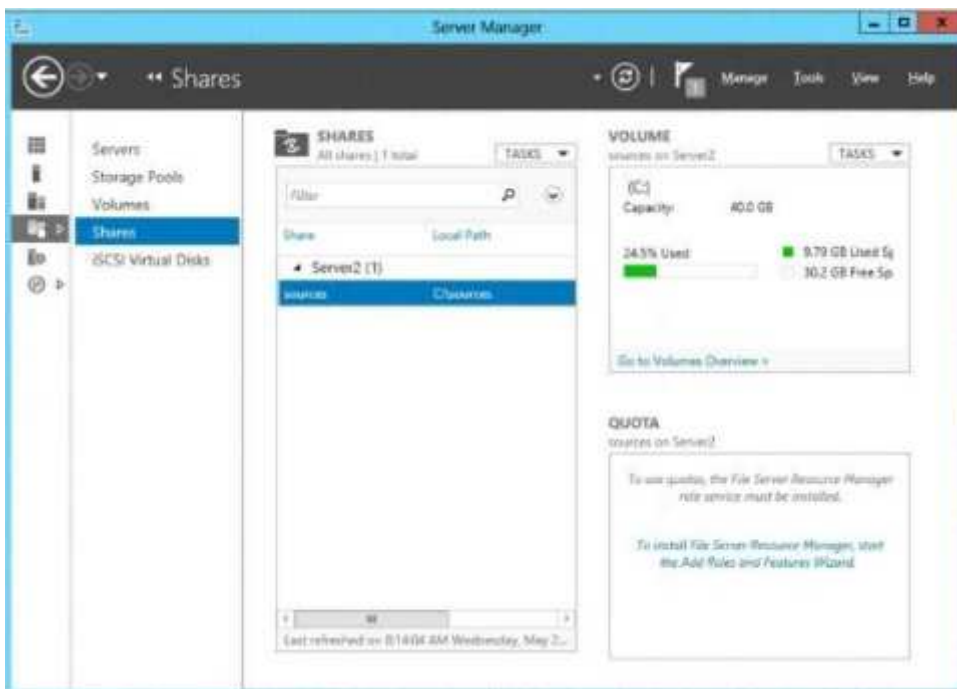
You have a server named Server2 that runs Windows Server 2012. You open Server Manager on Server2 as shown in the exhibit. (Click the Exhibit button.)

The Everyone group has read share permission and read NTFS permission to Sources.

You need to ensure that when users browse the network, the Sources share is not visible.

What should you do?

Exhibit:



- A. From the properties of the Sources folder, remove the Sources share, and then share the Sources folder as Sources\$
- B. From the properties of the Sources folder, deny the List Folder Contents permission for the Everyone group
- C. From the properties of the Sources share, configure access-based enumeration
- D. From the properties of the Sources folder, configure the hidden attribute

Correct Answer: A

Section: (none)

Explanation

Explanation/Reference:

QUESTION 10

Your network contains an Active Directory domain named contoso.com. The network contains a server named Server1 that runs Windows Server 2012 and a server named Server2 that runs Windows Server 2008 R2 Service Pack 1 (SP1). Server1 and Server2 are member server.

You need to ensure that you can manage Server2 from Server1 by using Server Manager.

Which two tasks should you perform? (Each correct answer presents part of the solution. Choose two.)

- A. Install Remote Server Administration Tools on Server1.
- B. Install Windows Management Framework 3.0 on Server2.
- C. Install the Windows PowerShell 2.0 engine on Server1.
- D. Install Microsoft .NET Framework 4 on Server2.
- E. Install Remote Server Administration Tools on Server2

Correct Answer: BD

Section: (none)

Explanation

Explanation/Reference:

<http://technet.microsoft.com/en-us/library/hh831456.aspx>

▲ Software and configuration requirements

Server Manager is installed by default with all editions of Windows Server 2012. Although you can use Server Manager, Manager does not run directly on Server Core installation options.

To fully manage remote servers that are running Windows Server 2008 or Windows Server 2008 R2, install the following:

1. .NET Framework 4
2. Windows Management Framework 3.0 The Windows Management Framework 3.0 download package updates V Server Manager collect information about roles and features that are installed on the managed servers. Until the **Verify earlier versions run Windows Management Framework 3.0.**
3. The performance update associated with [Knowledge Base article 2682011](#) allows Server Manager to collect per

QUESTION 11

Your network contains an Active Directory domain named contoso.com. The network contains a member server named Server1 that runs Windows Server 2012. Server1 has the DNS Server server role installed and has a primary zone for contoso.com. The Active Directory domain contains 500 client computers. There are an additional 20 computers in a workgroup. You discover that every client computer on the network can add its record to the contoso.com zone.

You need to ensure that only the client computers in the Active Directory domain can register records in the contoso.com zone.

What should you do first?

- A. Move the contoso.com zone to a domain controller that is configured as a DNS server
- B. Configure the Dynamic updates settings of the contoso.com zone
- C. Sign the contoso.com zone by using DNSSEC
- D. Configure the Security settings of the contoso.com zone.

Correct Answer: A

Section: (none)

Explanation

Explanation/Reference:

QUESTION 12

Your company has a remote office that contains 1,600 client computers on a single subnet.

You need to select a subnet mask for the network that will support all of the client computers. The solution must minimize the number of unused addresses.

Which subnet mask should you select?

- A. 255.255.248.0
- B. 255.255.252.0
- C. 255.255.254.0
- D. 255.255.240.0

Correct Answer: A

Section: (none)

Explanation

Explanation/Reference:

QUESTION 13

You plan to deploy a DHCP server that will support four subnets. The subnets will be configured as shown in the following table.

Subnet name	Number of hosts
Subnet1	50
Subnet2	110
Subnet3	400
Subnet4	525

You need to identify which network ID you should use for each subnet.

What should you identify? To answer, drag the appropriate network ID to the each subnet in the answer area.

Select and Place:

Network IDs	Answer Area
10.10.1.0/26	Subnet1: Network ID
10.10.8.0/22	Subnet2: Network ID
10.10.16.0/25	Subnet3: Network ID
10.10.128.0/23	Subnet4: Network ID

Correct Answer:

Network IDs	Answer Area
	Subnet1: 10.10.1.0/26
	Subnet2: 10.10.16.0/25
	Subnet3: 10.10.128.0/23
	Subnet4: 10.10.8.0/22

Section: (none)

Explanation

Explanation/Reference:

QUESTION 14

Your network contains three servers that run Windows Server 2012. The servers are configured as shown in the following table (click Exhibit).

Server3 is configured to obtain an IP address automatically.

You need to ensure that Server3 only receives an IP address from Server1. The IP address must always be the same.

Which two tasks should you perform? (Each correct answer presents part of the solution. Choose two.)

Exhibit:

Server name	Server role
Server1	Active Directory Domain Services DHCP Server DNS Server
Server2	Remote Access DHCP Server
Server3	File and Storage Services

- A. Create an exclusion on Server1.
- B. Create a filter on Server1.
- C. Create a reservation on Server2
- D. Create a reservation on Server1
- E. Create a filter on Server2.

Correct Answer: DE

Section: (none)

Explanation

Explanation/Reference:

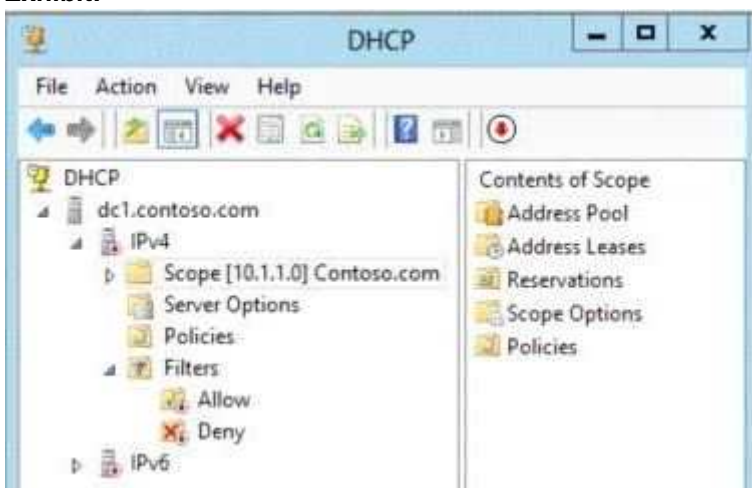
QUESTION 15

Your network contains an Active Directory domain named contoso.com. The domain contains a domain controller named DC1 that runs Windows Server 2012 and a client computer named Computer1 that runs Windows 8. DC1 is configured as a DHCP server as shown in the exhibit. (Click the Exhibit button.) Computer1 is configured to obtain an IP address automatically.

You need to ensure that Computer1 can receive an IP address from DC1.

What should you do?

Exhibit:



- A. Disable the Allow filters.
- B. Disable the Deny filters
- C. Activate Scope [10.1.1.0] Contoso.com.
- D. Authorize dc1.contoso.com.

Correct Answer: D

Section: (none)

Explanation

Explanation/Reference:

QUESTION 16

Your network contains an Active Directory domain named contoso.com. The domain contains a domain controller named Server1 that has the DNS Server server role installed. Server1 hosts a primary zone for contoso.com. The domain contains a member server named Server2 that is configured to use Server1 as its primary DNS server. From Server2, you run nslookup.exe as shown in the exhibit. (Click the Exhibit button.)

You need to ensure that when you run Nslookup, the correct name of the default server is displayed.

What should you do?

Exhibit:

A screenshot of a Windows PowerShell window titled "Administrator: Windows PowerShell". The window has a blue title bar and a dark blue background. The text inside shows the command prompt at "PS C:\Users\Administrator>" followed by the command "nslookup". The output of the command is: "DNS request timed out. timeout was 2 seconds. Default Server: Unknown Address: 10.0.0.11". The cursor is on a new line below the output.

```
Administrator: Windows PowerShell
Windows PowerShell
Copyright (C) 2011 Microsoft Corporation. All rights reserved.

PS C:\Users\Administrator> nslookup
DNS request timed out.
    timeout was 2 seconds.
Default Server: Unknown
Address: 10.0.0.11

>
```

- A. From Advanced TCP/IP Settings on Server1, add contoso.com to the DNS suffix list
- B. On Server1, modify the Security settings of the contoso.com zone
- C. On Server1, create a reverse lookup zone.
- D. From Advanced TCP/IP Settings on Server2, add contoso.com to the DNS suffix list

Correct Answer: C

Section: (none)

Explanation

Explanation/Reference:

QUESTION 17

Your network contains an Active Directory domain named contoso.com. The domain contains a domain controller named DC1 that hosts the primary DNS zone for contoso.com. All client computers are configured to use DC1 as the primary DNS server.

You need to configure DC1 to resolve any DNS requests that are not for the contoso.com zone by querying the DNS server of your Internet Service Provider (ISP).

What should you configure?

- A. Name server (NS) records
- B. Condition& forwarders
- C. Forwarders
- D. Naming Authority Pointer (NAPTR) DNS resource records (RR)

Correct Answer: C

Section: (none)

Explanation

Explanation/Reference:

QUESTION 18

Your network contains an Active Directory domain named contoso.com. All domain controllers run Windows Server 2012. The domain contains a server named Server1 that runs Windows Server 2012.

You need to ensure that when users log on to Server1, their user account is added automatically to a local group named Group1 during the log on process.

Which Group Policy settings should you modify?

- A. Restricted Groups
- B. Security Options
- C. User Rights Assignment
- D. Preferences

Correct Answer: D

Section: (none)

Explanation

Explanation/Reference:

QUESTION 19

Your network contains an Active Directory domain named contoso.com.

You need to prevent users from installing a Windows Store app named App1.

What should you create?

- A. An application control policy executable rule
- B. An application control policy packaged app rule
- C. A software restriction policy certificate rule
- D. An application control policy Windows Installer rule

Correct Answer: B

Section: (none)

Explanation

Explanation/Reference:

<http://www.grouppolicy.biz/2012/08/how-manage-published-a-k-a-metro-apps-in-windows-8-using-group-policy/>

Windows 8 is coming REALLY SOON and of course one of the big new things to computer with that is the new Packaged Apps that run in the start screen. However these apps are very different and do not install like traditional apps to a path or have a true "executable" file to launch the program. Of course enterprises need a way to control these packaged apps and therefore Microsoft has added a new feature Packaged Apps option to the AppLocker feature.

QUESTION 20

Your network contains an Active Directory domain named contoso.com. The domain contains 500 servers that run Windows Server 2012. You have a written security policy that states the following:

- Only required ports must be open on the servers.
- All of the servers must have Windows Firewall enabled.
- Client computers used by Administrators must be allowed to access all of the ports on all of the servers.
- Client computers used by the Administrators must be authenticated before the client computers can access the servers.

You have a client computer named Computer1 that runs Windows 8.

You need to ensure that you can use Computer1 to access all of the ports on all of the servers successfully.

The solution must adhere to the security policy.

Which three actions should you perform? (Each correct answer presents part of the solution. Choose three.)

- A. On Computer1, create a connection security rule
- B. On all of the servers, create an outbound rule and select the Allow the connection if it is secureoption.
- C. On all of the servers, create an inbound rule and select the Allow the connection if it is secureoption.
- D. On Computer1, create an inbound rule and select the Allow the connection if it is secureoption.
- E. On Computer1, create an outbound rule and select the Allow the connection if it is secureoption
- F. On all of the servers, create a connection security rule

Correct Answer: ACF

Section: (none)

Explanation

Explanation/Reference:

<http://technet.microsoft.com/en-us/library/cc772017.aspx>

Unlike firewall rules, which operate unilaterally, connection security rules require that both communicating computers have a policy with connection security rules or another compatible IPsec policy.

<http://technet.microsoft.com/en-us/library/cc753463.aspx>

Traffic that matches a firewall rule that uses the Allow connection if it is secure setting bypasses Windows Firewall. The rule can filter the traffic by IP address, port, or protocol. This method is supported on Windows Vista® or Windows Server® 2008.

QUESTION 21

Your network contains an Active Directory domain named contoso.com. All user accounts are in an organizational unit (OU) named Employees. You create a Group Policy object (GPO) named GP1. You link GP1 to the Employees OU.

You need to ensure that GP1 does not apply to the members of a group named Managers.

What should you configure?

- A. The Security settings of Employees
- B. The WMI filter for GP1
- C. The Block Inheritance option for Employees
- D. The Security settings of GP1

Correct Answer: D

Section: (none)

Explanation

Explanation/Reference:

[http://technet.microsoft.com/en-us/library/cc786636\(WS.10\).aspx](http://technet.microsoft.com/en-us/library/cc786636(WS.10).aspx)

QUESTION 22

Your network contains a server named Server1 that runs Windows Server 2012. Server1 is located on the same subnet as all of the client computers. A network technician reports that he receives a "Request timed out" error message when he attempts to use the ping utility to connect to Server1 from his client computer. The network technician confirms that he can access resources on Server1 from his client computer.

You need to configure Windows Firewall with Advanced Security on Server1 to allow the ping utility to connect.

Which rule should you enable?

- A. File and Printer Sharing (Echo Request - ICMPv4-In)
- B. Network Discovery (WSD-In)
- C. File and Printer Sharing (NB-Session-In)

D. Network Discovery (SSDP-In)

Correct Answer: A

Section: (none)

Explanation

Explanation/Reference:

QUESTION 23

You have a file server named Server1 that runs Windows Server 2012.

You need to ensure that a user named User1 can use Windows Server Backup to create a complete backup of Server1.

What should you configure?

- A. The local groups by using Computer Management
- B. A task by using Authorization Manager
- C. The User Rights Assignment by using the Local Group Policy Editor
- D. The Role Assignment by using Authorization Manager

Correct Answer: A

Section: (none)

Explanation

Explanation/Reference:

QUESTION 24

Your network contains a production Active Directory forest named contoso.com and a test Active Directory forest named contoso.test. A trust relationship does not exist between the forests. In the contoso.test domain, you create a backup of a Group Policy object (GPO) named GPO1. You transfer the backup of GPO1 to a domain controller in the contoso.com domain.

You need to create a GPO in contoso.com based on the settings of GPO1.

You must achieve this goal by using the minimum amount of Administrative effort.

What should you do?

- A. From Windows PowerShell, run the Get- GPO cmdlet and the Copy- GPO cmdlet.
- B. From Windows PowerShell, run the New- GPO cmdlet and the Import- GPO cmdlet.
- C. From Group Policy Management, create a new starter GPO. Right-click the new starter GPO, and then click Restore from Backup.
- D. From Group Policy Management, right-click the Group Policy Objects container, and then click Manage Backups.

Correct Answer: B

Section: (none)

Explanation

Explanation/Reference:

Why B?

<http://technet.microsoft.com/en-us/library/hh967461.aspx>

Why not D?

[http://technet.microsoft.com/en-us/library/cc781458\(v=WS.10\).aspx](http://technet.microsoft.com/en-us/library/cc781458(v=WS.10).aspx)

You can also restore GPOs. This operation takes a backed-up GPO and restores it to the same domain from which it was backed up. You cannot restore a GPO from backup into a domain different from the GPO's original domain.

QUESTION 25

Your network contains a server named Server1 that runs Windows Server 2012. Server1 has the Hyper-V server role installed. Server1 hosts four virtual machines named VM1, VM2, VM3, and VM4. Server1 is configured as shown in the following table.

Hardware component	Configuration
Processor	Eight quad-core CPUs that have non-uniform memory access (NUMA)
Memory	32 GB of RAM
Disk	Two local 4-TB disks
Network	Eight network adapters VMQ-supported PCI-SIG-supported

You install a network monitoring application on VM2.

You need to ensure that all of the traffic sent to VM3 can be captured on VM2.

What should you configure?

- A. NUMA topology
- B. Resource control
- C. resource metering
- D. virtual Machine Chimney
- E. the VLAN ID
- F. Processor Compatibility
- G. the startup order
- H. Automatic Start Action
- I. Integration Services
- J. Port mirroring
- K. Single-root I/O virtualization

Correct Answer: J

Section: (none)

Explanation

Explanation/Reference:

Port mirroring

Port mirroring allows the network traffic of a virtual machine to be monitored by copying incoming and outgoing packets and forwarding the copies to another virtual machine configured for monitoring.

Mirroring mode:

None



QUESTION 26

Your network contains a server named Server1 that runs Windows Server 2012. Server1 has the Hyper-V server role installed. Server1 hosts four virtual machines named VM1, VM2, VM3, and VM4. Server1 is configured as shown in the following table.

Hardware component	Configuration
Processor	Eight quad-core CPUs that have non-uniform memory access (NUMA)
Memory	32 GB of RAM
Disk	Two local 4-TB disks
Network	Eight network adapters VMQ-supported PCI-SIG-supported

You plan to schedule a complete backup of Server1 by using Windows Server Backup.

You need to ensure that the state of VM1 is saved before the backup starts.

What should you configure?

- A. NUMA topology
- B. Resource control
- C. resource metering
- D. virtual Machine Chimney
- E. the VLAN ID
- F. Processor Compatibility
- G. the startup order
- H. Automatic Start Action
- I. Integration Services
- J. Port mirroring
- K. Single-root I/O virtualization

Correct Answer: I

Section: (none)

Explanation

Explanation/Reference:

QUESTION 27

Your network contains a server named Server1 that runs Windows Server 2012. Server1 has the Hyper-V server role installed. Server1 hosts four virtual machines named VM1, VM2, VM3, and VM4. Server1 is configured as shown in the following table.

Hardware component	Configuration
Processor	Eight quad-core CPUs that have non-uniform memory access (NUMA)
Memory	32 GB of RAM
Disk	Two local 4-TB disks
Network	Eight network adapters VMQ-supported PCI-SIG-supported

VM3 is used to test applications.

You need to prevent VM3 from synchronizing its clock to Server1.

What should you configure?

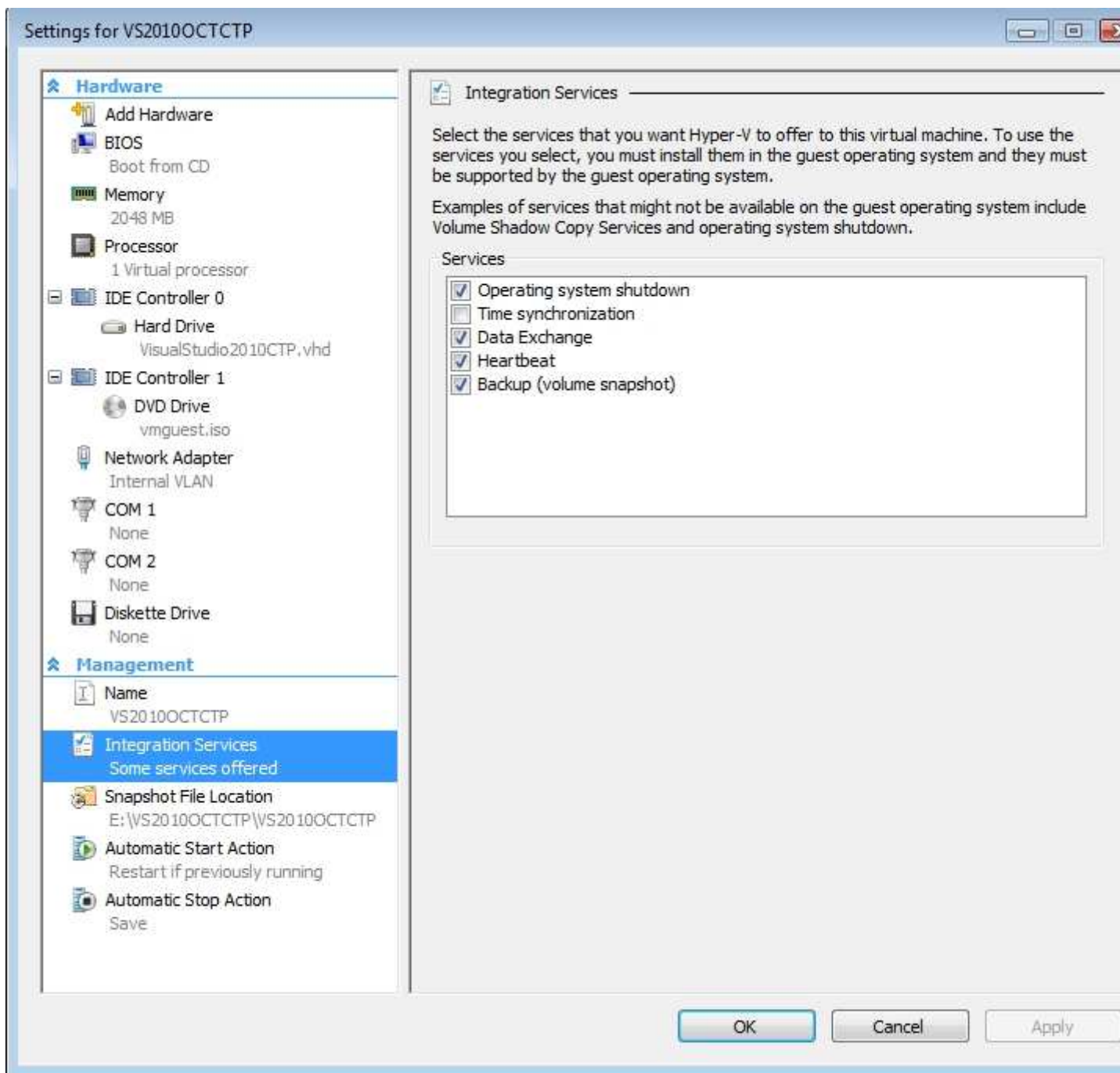
- A. NUMA topology
- B. Resource control
- C. resource metering
- D. virtual Machine Chimney
- E. the VLAN ID
- F. Processor Compatibility
- G. the startup order
- H. Automatic Start Action
- I. Integration Services
- J. Port mirroring
- K. Single-root I/O virtualization

Correct Answer: I

Section: (none)

Explanation

Explanation/Reference:



QUESTION 28

Your network contains a server named Server1 that runs Windows Server 2012. Server1 has the Hyper-V server role installed. Server1 hosts four virtual machines named VM1, VM2, VM3, and VM4. Server1 is configured as shown in the following table.

Hardware component	Configuration
Processor	Eight quad-core CPUs that have non-uniform memory access (NUMA)
Memory	32 GB of RAM
Disk	Two local 4-TB disks
Network	Eight network adapters VMQ-supported PCI-SIG-supported

You need to configure VM4 to track the CPU, memory, and network usage.

What should you configure?

- A. NUMA topology
- B. Resource control
- C. resource metering
- D. Virtual Machine Chimney
- E. the VLAN ID
- F. Processor Compatibility
- G. the startup order
- H. Automatic Start Action
- I. Integration Services
- J. Port mirroring
- K. Single-root I/O virtualization

Correct Answer: C

Section: (none)

Explanation

Explanation/Reference:

<http://blogs.technet.com/b/meamcs/archive/2012/05/28/hyper-v-resource-metering-in-windows-server-2012-server-8-beta.aspx>

QUESTION 29

Your network contains a server named Server1 that runs Windows Server 2012. Server1 has the Hyper-V server role installed. Server1 hosts four virtual machines named VM1, VM2, VM3, and VM4. Server1 is configured as shown in the following table.

Hardware component	Configuration
Processor	Eight quad-core CPUs that have non-uniform memory access (NUMA)
Memory	32 GB of RAM
Disk	Two local 4-TB disks
Network	Eight network adapters VMQ-supported PCI-SIG-supported

You install Windows Server 2012 on VM2 by using Windows Deployment Services (WDS).

You need to ensure that the next time VM2 restarts, you can connect to the WDS server by using PXE.

Which virtual machine setting should you configure for VM2?

- A. NUMA topology
- B. Resource control
- C. Resource metering
- D. Virtual Machine Chimney
- E. The VLAN ID
- F. Processor Compatibility
- G. The startup order
- H. Automatic Start Action
- I. Integration Services
- J. Port mirroring

K. Single-root I/O virtualization

Correct Answer: G

Section: (none)

Explanation

Explanation/Reference:

QUESTION 30

Your network contains an Active Directory domain named contoso.com. The domain contains two domain controllers. The domain controllers are configured as shown in the following table.

Name	Operating system	Operation master role
DC1	Windows Server 2012	<ul style="list-style-type: none">• Domain naming master• Schema master
DC2	Windows Server 2008 R2	<ul style="list-style-type: none">• PDC emulator• RID master• Infrastructure master

In the perimeter network, you install a new server named Server1 that runs a Server Core Installation of Windows Server 2012.

You need to join Server1 to the contoso.com domain.

What should you use?

- A. The New-ADComputer cmdlet
- B. The djoin.exe command
- C. The dsadd.exe command
- D. The Add-Computer cmdlet

Correct Answer: B

Section: (none)

Explanation

Explanation/Reference:

QUESTION 31

Your network contains an Active Directory forest that contains three domains. A group named Group1 is configured as a domain local distribution group in the forest root domain. You plan to grant Group1 read-only access to a shared folder named Share1. Share1 is located in a child domain.

You need to ensure that the members of Group1 can access Share1.

What should you do first?

- A. Convert Group1 to a global distribution group.
- B. Convert Group1 to a universal security group.
- C. Convert Group1 to a universal distribution group.
- D. Convert Group1 to a domain local security group

Correct Answer: B

Section: (none)

Explanation

Explanation/Reference:

QUESTION 32

Your network contains an Active Directory domain named contoso.com. All domain controllers run Windows Server 2008 R2. One of the domain controllers is named DC1. The network contains a member server named Server1 that runs Windows Server 2012.

You need to promote Server1 to a domain controller by using install from media (IFM).

What should you do first?

- A. Create a system state backup of DC1.
- B. Create IFM media on DC1.
- C. Upgrade DC1 to Windows Server 2012
- D. Run the Active Directory Domain Services Configuration Wizard on Server1.
- E. Run the Active Directory Domain Services Installation Wizard on DC1

Correct Answer: C

Section: (none)

Explanation

Explanation/Reference:

QUESTION 33

Your network contains an Active Directory domain named contoso.com. The domain contains 100 servers. The servers are contained in a organizational unit (OU) named ServersOU. You need to create a group named Group1 on all of the servers in the domain.

You must ensure that Group1 is added only to the servers.



<http://www.gratisexam.com/>

What should you configure?

- A. a Local Users and Groups preferences setting in a Group Policy linked to the Domain Controllers OU
- B. a Restricted Groups setting in a Group Policy linked to the domain
- C. a Local Users and Groups preferences setting in a Group Policy linked to ServersOU
- D. a Restricted Groups setting in a Group Policy linked to ServersOU

Correct Answer: C

Section: (none)

Explanation

Explanation/Reference:

QUESTION 34

Your network contains an Active Directory domain named adatum.com. The domain contains three domain controllers. The domain controllers are configured as shown in the following table.

Name	Operating system	Additional server roles
DC1	Windows Server 2008 R2	DNS Server
DC2	Windows Server 2012	DNS Server
DC3	Windows Server 2012	None

DC3 loses network connectivity due to a hardware failure. You plan to remove DC3 from the domain. You log on to DC3.

You need to identify which service location (SRV) records are registered by DC3.

What should you do?

- A. Open the %windir%\system32\config\netlogon.dns file.
- B. Run dcdiag /test:dns
- C. Open the %windir%\system32\dns\backup\adatum.com.dns file.
- D. Run ipconfig /displaydns.

Correct Answer: A

Section: (none)

Explanation

Explanation/Reference:

QUESTION 35

Your network contains an Active Directory domain named adatum.com. The domain contains several thousand member servers that run Windows Server 2012. All of the computer accounts for the member servers are in an organizational unit (OU) named ServersAccounts. Servers are restarted only occasionally.

You need to identify which servers were restarted during the last two days.

What should you do?

- A. Run dsquery computerand specify the -staiepwdpara meter.
- B. Run Get-ADComputerand specify the SearchScope parameter.
- C. Run Get-ADComputerand specify the lastLogonproperty.
- D. Run dsquery serverand specify the -oparameter

Correct Answer: C

Section: (none)

Explanation

Explanation/Reference:

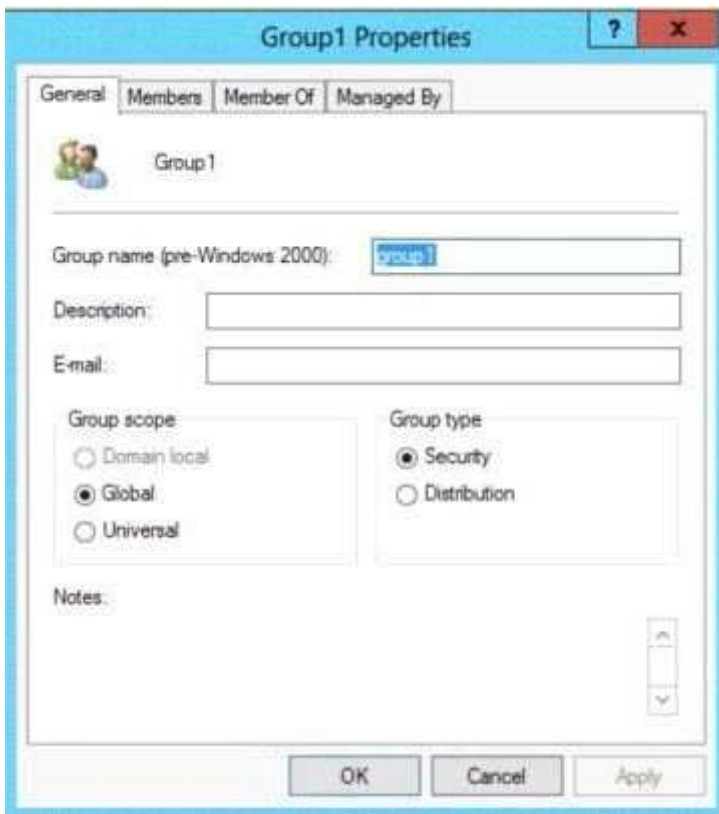
QUESTION 36

Your network contains an Active Directory domain named contoso.com. You log on to a domain controller by using an account named Admin1. Admin1 is a member of the Domain Admins group. You view the properties of a group named Group1 as shown in the exhibit. (Click the Exhibit button.) Group1 is located in an organizational unit (OU) named OU1.

You need to ensure that you can modify the Security settings of Group1 by using Active Directory Users and Computers.

What should you do from Active Directory Users and Computers?

Exhibit:



- A. From the View menu, select Users, Contacts, Groups, and Computers as containers.
- B. Right-click OU1 and select Delegate Control
- C. From the View menu, select Advanced Features.
- D. Right-click contoso.com and select Delegate Control.

Correct Answer: C

Section: (none)

Explanation

Explanation/Reference:

QUESTION 37

Your network contains an Active Directory domain named contoso.com. The domain contains two domain controllers named DC1 and DC2. You install Windows Server 2012 on a new computer named DC3.

You need to manually configure DC3 as a domain controller.

Which tool should you use?

- A. Server Manager
- B. winrm.exe
- C. Active Directory Domains and Trusts
- D. dcpromo.exe

Correct Answer: A

Section: (none)

Explanation

Explanation/Reference:

QUESTION 38

You have a server named Server1 that runs Windows Server 2012.

You need to remove Windows Explorer, Windows Internet Explorer, and all related components and files from Server1.

What should you run on Server1?

- A. Uninstall-WindowsFeature Server-Gui-Mgmt-Infra Remove
- B. Uninstall-WindowsFeature Server-Gui-Shell Remove
- C. `msiexec.exe /uninstall iexplore.exe /x`
- D. `msiexec.exe /uninstall explorer.exe /x`

Correct Answer: B

Section: (none)

Explanation

Explanation/Reference:

QUESTION 39

You have a server that runs Windows Server 2012. The server contains the disks configured as shown in the following table.

Disk name	Partition table type	Disk storage type	Unallocated disk space
Disk 0	GPT	Dynamic	2 TB
Disk 1	MBR	Basic	4 TB
Disk 2	GPT	Dynamic	4 TB
Disk 3	GPT	Dynamic	4 TB
Disk 4	MBR	Basic	2 TB

You need to create a volume that can store up to 3 TB of user files.

The solution must ensure that the user files are available if one of the disks in the volume fails.

What should you create?

- A. a mirrored volume on Disk 1 and Disk 4
- B. a mirrored volume on Disk 1 and Disk 3
- C. a RAID-5 volume on Disk 1, Disk 2, and Disk 3
- D. a spanned volume on Disk 0 and Disk 4

Correct Answer: B

Section: (none)

Explanation

Explanation/Reference:

QUESTION 40

You have a server named Core1 that has a Server Core Installation of Windows Server 2012. Core1 has the Hyper-V server role installed. Core1 has two network adapters from different third-party hardware vendors.

You need to configure network traffic failover to prevent connectivity loss if a network adapter fails.

What should you use?

- A. `New-NetSwitchTeam`
- B. `Add-NetSwitchTeamMember`

- C. Install-Feature
- D. netsh.exe

Correct Answer: A

Section: (none)

Explanation

Explanation/Reference:

<http://technet.microsoft.com/en-us/library/jj553814.aspx>

Detailed Description

The **New-NetSwitchTeam** cmdlet creates a new switch team. A switch team must have a name for the team and must be

QUESTION 41

You have a server named Server1 that runs Windows Server 2012. You connect three new hard disks to Server1.

You need to create a storage space that contains the three disks.

The solution must meet the following requirements:

- Provide fault tolerance if a single disk fails.
- Maximize the amount of files that can be stored in the storage space.

What should you create?

- A. A simple space
- B. A spanned volume
- C. A mirrored space
- D. A parity space

Correct Answer: D

Section: (none)

Explanation

Explanation/Reference:

QUESTION 42

You perform a Server Core Installation of Windows Server 2012 on a server named Server1.

You need to add a graphical user interface (GUI) to Server1.

Which tool should you use?

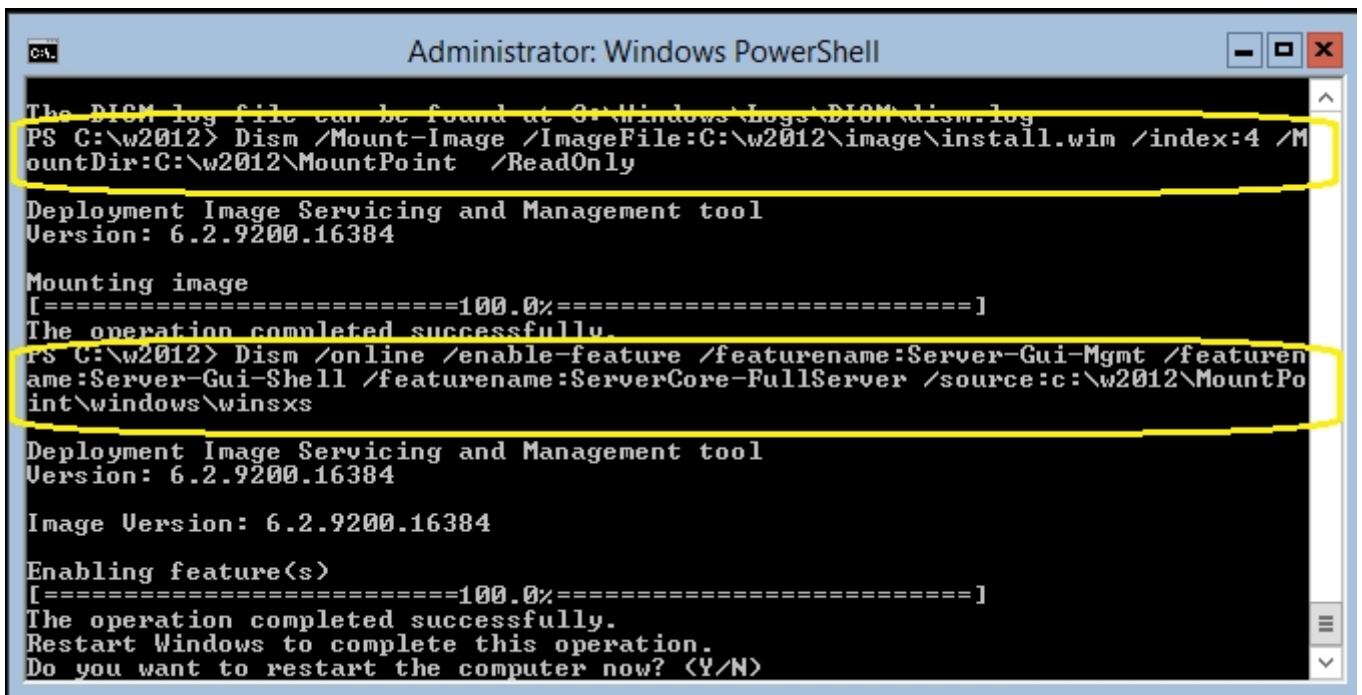
- A. The setup.exe command
- B. The dism.exe command
- C. The imagex.exe command
- D. The Add-WindowsPackage cmdlet

Correct Answer: B

Section: (none)

Explanation

Explanation/Reference:

A screenshot of a Windows PowerShell window titled "Administrator: Windows PowerShell". The window has a black background with white text. The text shows the execution of two DISM commands. The first command is "Dism /Mount-Image /ImageFile:C:\w2012\image\install.wim /index:4 /MountDir:C:\w2012\MountPoint /ReadOnly". It is followed by the text "Deployment Image Servicing and Management tool" and "Version: 6.2.9200.16384". Then, "Mounting image" is shown with a progress bar "[=====100.0%=====]" and "The operation completed successfully.". The second command is "Dism /online /enable-feature /featurename:Server-Gui-Mgmt /featurename:Server-Gui-Shell /featurename:ServerCore-FullServer /source:c:\w2012\MountPoint\windows\winsxs". It is followed by the same version text, "Image Version: 6.2.9200.16384", and "Enabling feature(s)" with a progress bar "[=====100.0%=====]". The final text is "The operation completed successfully. Restart Windows to complete this operation. Do you want to restart the computer now? (Y/N)".

```
Administrator: Windows PowerShell

The DISM log file can be found at C:\Windows\logs\DISM\dism.log
PS C:\w2012> Dism /Mount-Image /ImageFile:C:\w2012\image\install.wim /index:4 /MountDir:C:\w2012\MountPoint /ReadOnly

Deployment Image Servicing and Management tool
Version: 6.2.9200.16384

Mounting image
[=====100.0%=====]
The operation completed successfully.
PS C:\w2012> Dism /online /enable-feature /featurename:Server-Gui-Mgmt /featurename:Server-Gui-Shell /featurename:ServerCore-FullServer /source:c:\w2012\MountPoint\windows\winsxs

Deployment Image Servicing and Management tool
Version: 6.2.9200.16384

Image Version: 6.2.9200.16384

Enabling feature(s)
[=====100.0%=====]
The operation completed successfully.
Restart Windows to complete this operation.
Do you want to restart the computer now? (Y/N)
```

QUESTION 43

You have a server named Server1 that runs Windows Server 2012. Server1 has five network adapters. Three of the network adapters are connected to a network named LAN1. The two other network adapters are connected to a network named LAN2.

You need to create a network adapter team from the three network adapters connected to LAN 1.

Which tool should you use?

- A. Routing and Remote Access
- B. Network and Sharing Center
- C. Server Manager
- D. Network Load Balancing Manager

Correct Answer: C

Section: (none)

Explanation

Explanation/Reference:

TEAMS

All Teams | 0 total

TASKS ▼

Team Status Teaming Mode Load Balancing Adapters

ADA

Net

Ada

▲

Eth

vEth

QUESTION 44

Your company's security policy states that all of the servers deployed to a branch office must not have the graphical user interface (GUI) installed. In a branch office, a support technician installs a server with a GUI installation of Windows Server 2012 on a new server, and then configures the server as a DHCP server.

You need to ensure that the new server meets the security policy.

You want to achieve this goal by using the minimum amount of Administrative effort.

What should you do?

- A. Reinstall Windows Server 2012 on the server.
- B. From Windows PowerShell, run `Uninstall-WindowsFeature Desktop-Experience`.
- C. From Windows PowerShell, run `Uninstall-WindowsFeature PowerShell-ISE`.
- D. From Server Manager, uninstall the User Interfaces and Infrastructure feature.

Correct Answer: D

Section: (none)

Explanation

Explanation/Reference:

QUESTION 45

Your network contains three servers. The servers are configured as shown in the following table.

Server name	CPU type	Operating system	Installation type
Server1	x86	32-bit Windows Server 2008 Service Pack 2 (SP2)	Full
Server2	X86	32-bit Windows Server 2008 Service Pack 2 (SP2)	Server Core
Server3	x64	64-bit Windows Server 2008 R2	Full

Your company plans to standardize all of the servers on Windows Server 2012.

You need to recommend an upgrade path for each server.

The solution must meet the following requirements:

- Upgrade the existing operating system whenever possible.
- Minimize hardware purchases.

Which upgrade path should you recommend for each server?

To answer, drag the appropriate upgrade path to each server in the answer area. Each upgrade path may be used once, more than once, or not at all.

Select and Place:

Click here to enter text.	Answer Area
Clean installation on new hardware	Server1
Clean installation on existing hardware	Server2
Upgrade on existing hardware	Server3

Correct Answer:

Click here to enter text.	Answer Area
Clean installation on new hardware	Server1 Clean installation on new hardware
Clean installation on existing hardware	Server2 Clean installation on new hardware
Upgrade on existing hardware	Server3 Upgrade on existing hardware

Section: (none)

Explanation

Explanation/Reference:

QUESTION 46

Your network contains a file server named Server1 that runs Windows Server 2012. All client computers run Windows 8. Server1 contains a folder named Folder1. Folder1 contains the installation files for the company's desktop applications. A network technician shares Folder1 as Share 1.

You need to ensure that the share for Folder1 is not visible when users browse the network.

What should you do?

- From the properties of Folder1, deny the List Folder Contents permission for the Everyone group.
- From the properties of Folder1, remove Share1, and then share Folder1 as Share1\$.
- From the properties of Folder1, configure the hidden attribute.
- From the properties of Share1, configure access-based enumeration

Correct Answer: B

Section: (none)

Explanation

Explanation/Reference:

QUESTION 47

Your network contains an Active Directory domain named contoso.com. The domain contains a server named Server1 that runs Windows Server 2012 and a server named Server2 that runs Windows Server 2008 R2 Service Pack 1 (SP1). Both servers are member servers. On Server2, you install all of the software required to ensure that Server2 can be managed remotely from Server Manager.

You need to ensure that you can manage Server2 from Server1 by using Server Manager.

Which two tasks should you perform on Server2? (Each correct answer presents part of the solution. Choose two.)

- A. Run the systempropertiesremote.exe command
- B. Run the Enable-PsRemotingcmdlet.
- C. Run the Enable-PsSessionConfigurationcmdlet
- D. Run the Configure-SMRemoting.ps1 script
- E. Run the Set-ExecutionPolicycmdlet.

Correct Answer: DE

Section: (none)

Explanation

Explanation/Reference:

<http://technet.microsoft.com/en-us/library/dd759202.aspx>

To configure Server Manager remote management by using Windows PowerShell

On the computer that you want to manage remotely, open a Windows PowerShell session with elevated user rights. To do this, click Start, click All Programs, click Accessories, click Windows PowerShell, right-click the Windows PowerShell shortcut, and then click Run as administrator.

In the Windows PowerShell session, type the following, and then press Enter.

Set-ExecutionPolicy -ExecutionPolicy RemoteSigned

Type the following, and then press Enter to enable all required firewall rule exceptions.

Configure-SMRemoting.ps1 -force -enable

QUESTION 48

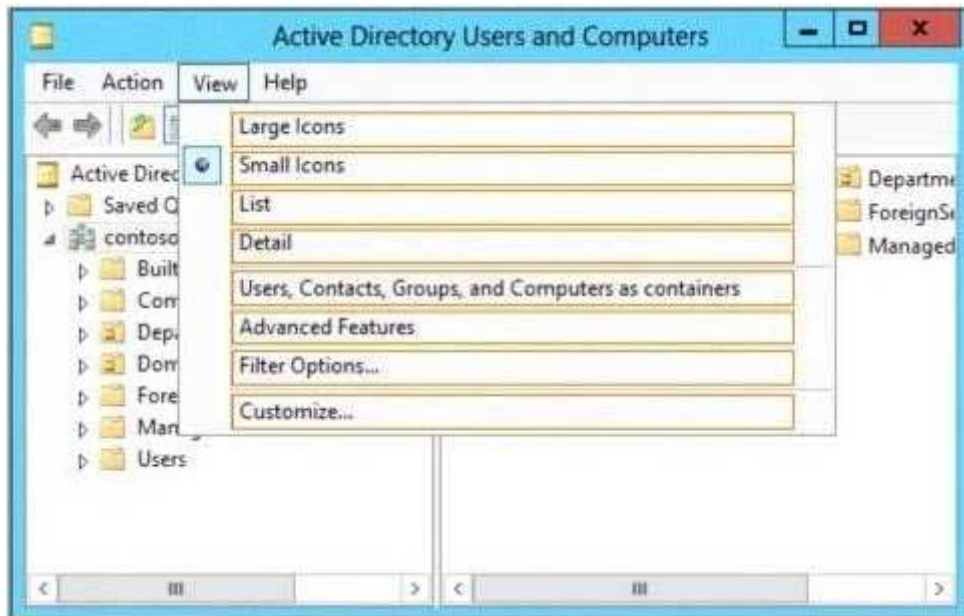
Your network contains an Active Directory domain named contoso.com. The domain contains a print server named Server1 that runs Windows Server 2012. You share several printers on Server1.

You need to ensure that you can view the printer objects associated to Server1 in Active Directory Users and Computers.

Which option should you select?

To answer, select the appropriate option in the answer area.

Hot Area:



Correct Answer:



Section: (none)

Explanation

Explanation/Reference:

QUESTION 49

Your network contains an Active Directory domain named contoso.com. The domain contains two member servers named Server1 and Server2 that run Windows Server 2012. You log on to Server1.

You need to retrieve the IP configurations of Server2.

Which command should you run from Server1?

- A. winrs -r:server2 ipconfig
- B. winrm get server2
- C. dsquery *-scope base-attr ip, server2
- D. ipconfig > server2.ip

Correct Answer: A

Section: (none)

Explanation

Explanation/Reference:

QUESTION 50

Your network contains an Active Directory domain named contoso.com. The network contains a domain controller named DC1 that has to DNS Server server role installed. DC1 has a standard primary DNS zone for contoso.com.

You need to ensure that only client computers in the contoso.com domain will be able to add their records to the contoso.com zone.

What should you do first?

- A. Modify the Security settings of Dc1
- B. Modify the Security settings of the contoso.com zone.
- C. Store the contoso.com zone in Active Directory
- D. Sign the contoso.com zone.

Correct Answer: C

Section: (none)

Explanation

Explanation/Reference:

QUESTION 51

Your network contains a single Active Directory domain named contoso.com. The network contains two subnets. The subnets are configured as shown in the following table.

Subnet name	Network IP address
MainOffice	172.16.0.0
Warehouse	192.168.1.0

The network contains a member server named Server1 that runs Windows Server 2012. Server1 has the DHCP Server server role installed. Server1 is configured to lease IP addresses to the two subnets. You discover that computers on the Warehouse subnet that have static IP addresses can communicate with the computers on the MainOffice subnet. Computers on the Warehouse subnet that obtain an IP address automatically can only communicate with other computers on the Warehouse subnet.

You need to ensure that all of the computers on the Warehouse subnet can communicate with the computers on the MainOffice subnet.

Which DHCP option should you configure on Server1?

- A. 003 Router
- B. 011 Resource Location Servers
- C. 020 Nonlocal Source Routing
- D. 019 IP Layer Forwarding

Correct Answer: A

Section: (none)

Explanation

Explanation/Reference:

QUESTION 52

Your network contains an Active Directory domain named contoso.com. The network contains 500 client computers that run Windows 8. All of the client computers connect to the Internet by using a web proxy. You deploy a server named Server1 that runs Windows Server 2012. Server1 has the DNS Server server role installed. You configure all of the client computers to use Server1 as their primary DNS server.

You need to prevent Server1 from attempting to resolve Internet host names for the client computers.

What should you do on Server1?

- A. Configure the Security settings of the contoso.com zone.
- B. Remove all root hints.
- C. Create a primary zone named ".".
- D. Create a primary zone named "root".
- E. Create a primary zone named "GlobalNames".
- F. Create a forwarder that points to 169.254.0.1.
- G. Create a stub zone named "root".
- H. Create a zone delegation for GlobalNames.contoso.com.

Correct Answer: BC

Section: (none)

Explanation

Explanation/Reference:

QUESTION 53

Your company has a remote office that contains 600 client computers on a single subnet.

You need to select a subnet mask for the network that will support all of the client computers. The solution must minimize the number of unused addresses.

Which subnet mask should you select?

- A. 255.255.252.0
- B. 255.255.254.0
- C. 255.255.255.0
- D. 255.255.255.128

Correct Answer: A

Section: (none)

Explanation

Explanation/Reference:

QUESTION 54

Your network contains three servers that run Windows Server 2012. The servers are configured as shown in the following table.

Server name	Server role
Server1	Active Directory Domain Services DHCP Server DNS Server
Server2	Remote Access DHCP Server
Server3	File and Storage Services

Server3 is configured to obtain an IP address automatically.

You need to prevent Server3 from receiving an IP address from Server1.

What should you create on Server1?

- A. A reservation
- B. A filter
- C. A scope option
- D. An exclusion

Correct Answer: B

Section: (none)

Explanation

Explanation/Reference:

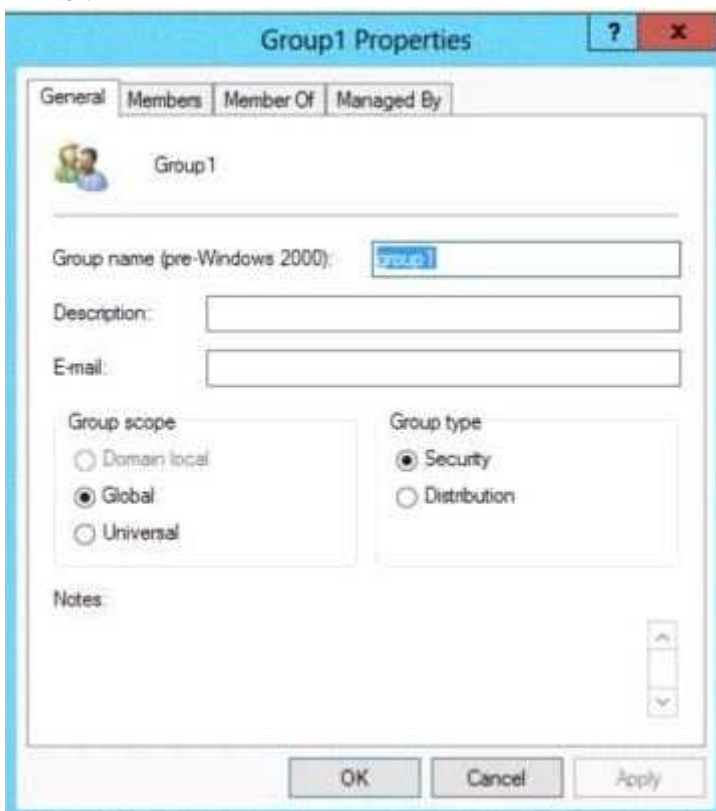
QUESTION 55

Your network contains an Active Directory domain named contoso.com. You log on to a domain controller by using an account named Admin1. Admin1 is a member of the Domain Admins group. You view the properties of a group named Group1 as shown in the exhibit. (Click the Exhibit button.) Group1 is located in an organizational unit (OU) named OU1.

You need to ensure that users from Group1 can modify the Security settings of OU1 only.

What should you do from Active Directory Users and Computers?

Exhibit:



- A. Modify the Managed By settings on OU1.
- B. Right-click contoso.com and select Delegate Control.
- C. Right-click OU1 and select Delegate Control.
- D. Modify the Security settings of Group1.

Correct Answer: C

Section: (none)

Explanation

Explanation/Reference:

QUESTION 56

Your network contains an Active Directory forest. The forest contains two domains named contoso.com and corp.contoso.com. The forest contains four domain controllers. The domain controllers are configured as shown in the following table.

Name	Domain	Operating system	Configuration
DC1	contoso.com	Windows Server 2008 R2	PDC emulator Infrastructure master RID master
DC2	contoso.com	Windows Server 2012	Domain naming master Schema master Global catalog
DC3	corp.contoso.com	Windows Server 2008 R2	PDC emulator Infrastructure master RID master
DC4	corp.contoso.com	Windows Server 2012	Global catalog

All domain controllers are DNS servers. In the corp.contoso.com domain, you plan to deploy a new domain controller named DCS.

You need to identify which domain controller must be online to ensure that DCS can be promoted successfully to a domain controller.

Which domain controller should you identify?

- A. DC1
- B. DC2
- C. DC3
- D. DC4

Correct Answer: C

Section: (none)

Explanation

Explanation/Reference:

QUESTION 57

Your network contains an Active Directory forest named contoso.com. All domain controllers currently run Windows Server 2008 R2. You plan to install a new domain controller named DC4 that runs Windows Server 2012.

The new domain controller will have the following configurations:

- Schema master
- Global catalog server
- DNS Server server role
- Active Directory Certificate Services server role

You need to identify which configurations Administrators by using the Active Directory Installation Wizard.

Which two configurations should you identify? (Each correct answer presents part of the solution. Choose two.)

- A. Transfer the schema master.
- B. Enable the global catalog server.

- C. Install the DNS Server role
- D. Install the Active Directory Certificate Services role.

Correct Answer: AD

Section: (none)

Explanation

Explanation/Reference:

AD Installation Wizard will automatically install DNS and allows for the option to set it as a global catalog server. ADCS and schema must be done separately.

Specify domain controller capabilities and site information

☒ Domain Name System (DNS) server

☒ Global Catalog (GC)

☐ Read only domain controller (RODC)

Site name:

Default-First-Site-Name

Type the Directory Services Restore Mode (DSRM) password

Password:

*

Confirm password:

*

QUESTION 58

Your network contains an Active Directory domain named contoso.com. The domain contains two domain controllers. The domain controllers are configured as shown in the following table.

Name	Operating system	Operation master role
DC1	Windows Server 2012	Domain naming master Schema master
DC2	Windows Server 2008 R2	PDC emulator RID master Infrastructure master

In the perimeter network, you install a new server named Server1 that runs Windows Server 2012. Server1 is in a workgroup.

You need to perform an offline domain join of Server1 to the contoso.com domain.

What should you do first?

- A. Transfer the PDC emulator role to Dc1.
- B. Run the djoin.exe command.
- C. Run the dsadd.exe command.
- D. Transfer the infrastructure master role to DC1.

Correct Answer: B

Section: (none)

Explanation

Explanation/Reference:

QUESTION 59

Your network contains an Active Directory domain named contoso.com. You discover that when you join client computers to the domain manually, the computer accounts are created in the Computers container.

You need to ensure that new computer accounts are created automatically in an organizational unit (OU) named Corp.

Which tool should you use?

- A. net.exe
- B. redircmp.exe
- C. regedit.exe
- D. dsadd.exe

Correct Answer: B

Section: (none)

Explanation

Explanation/Reference:

[http://technet.microsoft.com/en-us/library/cc770619\(v=ws.10\).aspx](http://technet.microsoft.com/en-us/library/cc770619(v=ws.10).aspx)

QUESTION 60

Your network contains two Active Directory forests named adatum.com and contoso.com. Both forests contain multiple domains. A two-way trust exists between the forests. The contoso.com domain contains a domain local security group named Group1. Group1 contains contoso\user1 and adatum\user1.

You need to ensure that Group1 can only contain users from the contoso.com domain.

Which three actions should you perform?

To answer, move three actions from the list of actions to the answer area and arrange them in the correct order.

Select and Place:

Remove adatum\user1 from Group1.

Convert Group1 to a distribution group.

Convert Group1 to a global group.

Remove contoso\user1 from Group1.

Convert Group1 to a universal group.

Correct Answer:

Convert Group1 to a distribution group.

Remove contoso\user1 from Group1.

Remove adatum\user1 from Group1.

Convert Group1 to a universal group.

Convert Group1 to a global group.

Section: (none)
Explanation

Explanation/Reference:
[http://technet.microsoft.com/en-us/library/cc755692\(v=ws.10\).aspx](http://technet.microsoft.com/en-us/library/cc755692(v=ws.10).aspx)

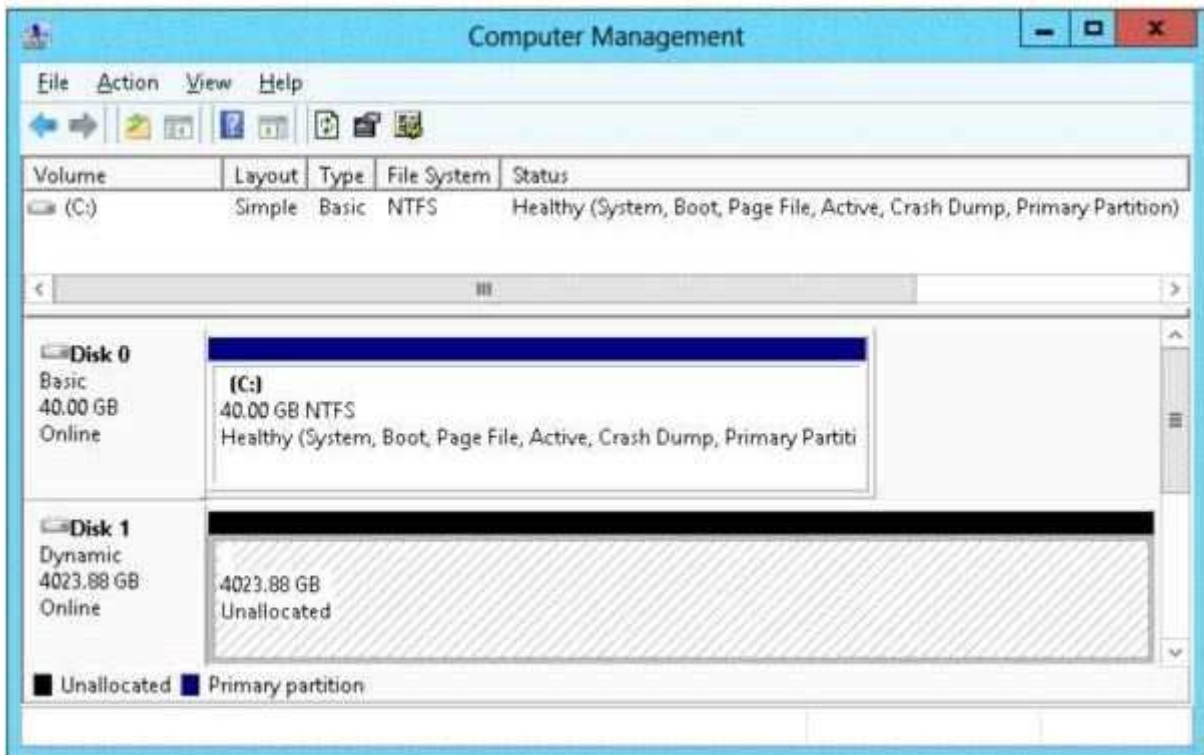
QUESTION 61

You have a server named Server2 that runs Windows Server 2012. Server2 has the Hyper-V server role installed. The disks on Server2 are configured as shown in the exhibit. (Click the Exhibit button.) You create a virtual machine on Server2 named VM1.

You need to ensure that you can configure a pass-through disk for VM1.

What should you do?

Exhibit:



- A. Convert Disk 1 to a basic disk.
- B. Take Disk 1 offline.
- C. Create a partition on Disk 1.
- D. Convert Disk 1 to a MBR disk.

Correct Answer: B
Section: (none)
Explanation

Explanation/Reference:
<http://blogs.technet.com/b/askcore/archive/2008/10/24/configuring-pass-through-disks-in-hyper-v.aspx>

The pass-through disk must be offline.

QUESTION 62

You have a server named Server1 that runs Windows Server 2012. Server1 has the Hyper-V server role installed. Server1 is connected to two Fibre Channel SANs and is configured as shown in the following table.

Host bus adapter (HBA) name	Fibre Channel SAN name
HBA1	SAN1
HBA2	SAN2
HBA3	SAN1
HBA4	SAN2

You have a virtual machine named VM1.

You need to configure VM1 to connect to SAN1.

What should you do first?

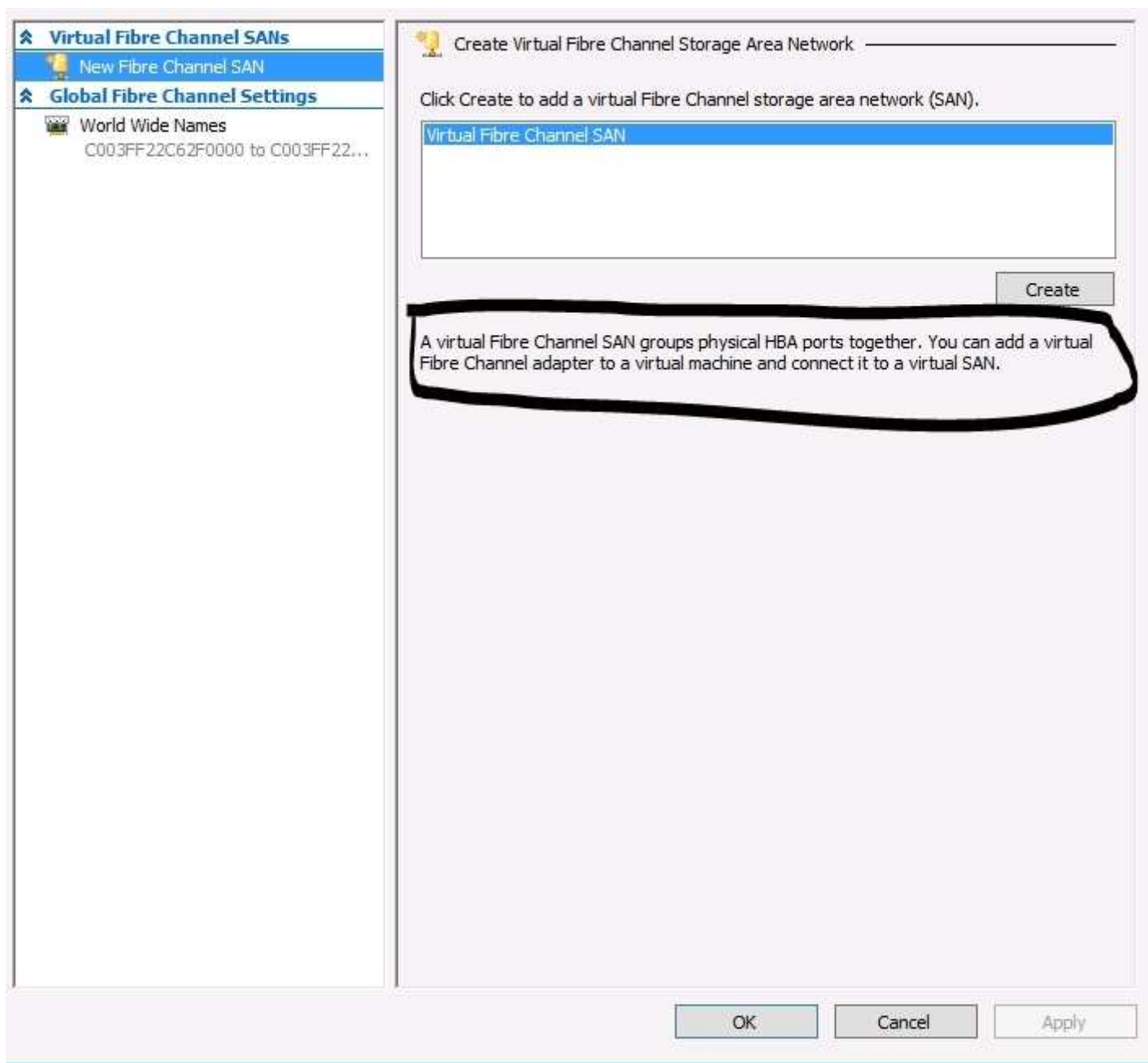
- A. Add one HBA
- B. Create a Virtual Fibre Channel SAN.
- C. Create a Hyper-V virtual switch.
- D. Configure network adapter teaming.

Correct Answer: B

Section: (none)

Explanation

Explanation/Reference:



QUESTION 63

You have a file server named Server1 that runs Windows Server 2012.

Server1 has following hardware configurations:

- 16GB of RAM
- A single quad-core CPU
- Three network teams that have two network adapters each

You add additional CPUs and RAM to Server1. You repurpose Server1 as a virtualization host. You install the Hyper-V server role on Server1.

You need to create four external virtual switches in Hyper-V.

Which cmdlet should you run first?

- A. Add-VMNetworkAdapter
- B. Add-NetLbfoTeamNic
- C. Remove-NetLbfoTeam
- D. Set-NetAdapter

Correct Answer: C

Section: (none)

Explanation

Explanation/Reference:

You need 4 virtual switches but currently only have 3 teams available. You would need to break a team first.

<http://technet.microsoft.com/en-us/library/jj130848.aspx>

QUESTION 64

Your network contains a server named Server1 that runs Windows Server 2012. Server1 has the Hyper-V server role installed. Server1 hosts four virtual machines named VM1, VM2, VM3, and VM4. Server1 is configured as shown in the following table.

Hardware component	Configuration
Processor	Eight quad-core CPUs that have non-uniform memory access (NUMA)
Memory	32 GB of RAM
Disk	Two local 4-TB disks
Network	Eight network adapters VMQ-supported PCI-SIG-supported

You need to ensure that VM1 can use more CPU time than the other virtual machines when the CPUs on Server1 are under a heavy load.

What should you configure?

- A. NUMA topology
- B. Resource control
- C. resource metering
- D. Virtual Machine Chimney
- E. The VLAN ID
- F. Processor Compatibility
- G. The startup order
- H. Automatic Start Action
- I. Integration Services
- J. Port mirroring
- K. Single-root I/O virtualization

Correct Answer: B

Section: (none)

Explanation

Explanation/Reference:

Processor

You can modify the number of virtual processors based on the number of processors on the physical computer. You can also modify other resource control settings.

Number of virtual processors:

Resource control

You can use resource controls to balance resources among virtual machines.


Virtual machine reserve (percentage):

Percent of total system resources:

Virtual machine limit (percentage):

Percent of total system resources:

Relative weight:

 Some settings cannot be modified because the virtual machine was running when this window was opened. To modify a setting that is unavailable, shut down the virtual machine and then reopen this window.

QUESTION 65

Your network contains a server named Server1 that runs Windows Server 2012. Server1 has the Hyper-V server role installed. Server1 hosts four virtual machines named VM1, VM2, VM3, and VM4. Server1 is configured as shown in the following table.

Hardware component	Configuration
Processor	Eight quad-core CPUs that have non-uniform memory access (NUMA)
Memory	32 GB of RAM
Disk	Two local 4-TB disks
Network	Eight network adapters VMQ-supported PCI-SIG-supported

VM2 sends and receives large amounts of data over the network.

You need to ensure that the network traffic of VM2 bypasses the virtual switches of the parent partition.

What should you configure?

- A. NUMA topology
- B. Resource control
- C. Resource metering
- D. Virtual Machine Chimney
- E. The VLAN ID
- F. Processor Compatibility
- G. The startup order
- H. Automatic Start Action
- I. Integration Services
- J. Port mirroring
- K. Single-root I/O virtualization

Correct Answer: K

Section: (none)

Explanation

Explanation/Reference:

<http://technet.microsoft.com/en-us/library/hh831410.aspx>

▲ SR-IOV

This new feature allows you to assign a network adapter that supports **single-root** I/O virtualization (SR-IOV) directly to

What value does this change add?

Use of SR-IOV maximizes network throughput while minimizing network latency as well as the CPU overhead required for

What works differently?

You can provide a virtual machine with direct connectivity to a physical network adapter. For more information, see [Hyper-V SR-IOV](#)

QUESTION 66

Your network contains an Active Directory domain named contoso.com. The domain contains a domain controller named DC1 that runs Windows Server 2012.

You need to configure a central store for the Group Policy Administrative Templates.

What should you do on DC1?

- A. From Server Manager, create a storage pool.
- B. From Windows Explorer, copy the PolicyDefinitions folder to the SYSVOL\contoso.com\policies folder.
- C. From Server Manager, add the Group Policy Management feature
- D. From Windows Explorer, copy the PolicyDefinitions folder to the NETLOGON share.

Correct Answer: B

Section: (none)

Explanation

Explanation/Reference:

QUESTION 67

You install Windows Server 2012 on a standalone server named Server1. You configure Server1 as a VPN server.

You need to ensure that client computers can establish PPTP connections to Server1.

Which two firewall rules should you create? (Each correct answer presents part of the solution. Choose two.)

- A. An inbound rule for protocol 47
- B. An outbound rule for protocol 47
- C. An inbound rule for TCP port 1723
- D. An inbound rule for TCP port 1701
- E. An outbound rule for TCP port 1723
- F. An outbound rule for TCP port 1701

Correct Answer: AC

Section: (none)

Explanation

Explanation/Reference:

To enable VPN tunnels between individual host computers or entire networks that have a firewall between them, you must open the following ports:

PPTP

To allow PPTP tunnel maintenance traffic, open TCP 1723.

To allow PPTP tunneled data to pass through router, open Protocol ID 47.

<http://www.windowsitpro.com/article/pptp/which-ports-do-you-need-to-open-on-a-firewall-to-allow-pptp-and-l2tp-over-ipsec-vpn-tunnels--46811>

If you use a personal firewall or a broadband router, or if there are routers or firewalls between the VPN client and the VPN server, the following ports and protocol must be enabled for PPTP on all firewalls and routers that are between the VPN client and the VPN server:

Client ports	Server port	Protocol
1024-65535/TCP	1723/TCP	PPTP

Additionally, you must enable IP PROTOCOL 47 (GRE).

<http://support.microsoft.com/kb/314076/en-us>

QUESTION 68

Your network contains an Active Directory domain named adatum.com. The computer accounts for all member servers are located in an organizational unit (OU) named Servers. You link a Group Policy object (GPO) to the Servers OU.

You need to ensure that the domain's Backup Operators group is a member of the local Backup Operators group on each member server.

The solution must not remove any groups from the local Backup Operators groups.

What should you do?

- A. Add a restricted group named adatum\Backup Operators. Add Backup Operators to the This group is a member of list.
- B. Add a restricted group named adatum\Backup Operators. Add Backup Operators to the Members of this group list.
- C. Add a restricted group named Backup Operators. Add adatum\Backup Operators to the This group is a member of list.
- D. Add a restricted group named Backup Operators. Add adatum\Backup Operators to the Members of this group list.

Correct Answer: A

Section: (none)

Explanation

Explanation/Reference:

QUESTION 69

Your network contains an Active Directory domain named contoso.com. All servers run Windows Server 2012. An application named Appl.exe is installed on all client computers. Multiple versions of Appl.exe are installed on different client computers. Appl.exe is digitally signed.

You need to ensure that only the latest version of Appl.exe can run on the client computers.

What should you create?

- A. An application control policy packaged app rule
- B. A software restriction policy certificate rule
- C. An application control policy Windows Installer rule
- D. An application control policy executable rule

Correct Answer: D

Section: (none)

Explanation

Explanation/Reference:

QUESTION 70

Your network contains an Active Directory domain named contoso.com. All domain controllers run Windows Server 2012.

You need to ensure that the local Administrator account on all computers is renamed to L_Admin.

Which Group Policy settings should you modify?

- A. Security Options
- B. User Rights Assignment
- C. Restricted Groups
- D. Preferences

Correct Answer: A

Section: (none)

Explanation

Explanation/Reference:

[http://technet.microsoft.com/en-us/library/cc747484\(v=ws.10\).aspx](http://technet.microsoft.com/en-us/library/cc747484(v=ws.10).aspx)

In Group Policy Object Editor, click Computer Configuration, click Windows Settings, click Security Settings, click Local Policies, and then click Security Options.

In the details pane, double-click Accounts: Rename administrator account.

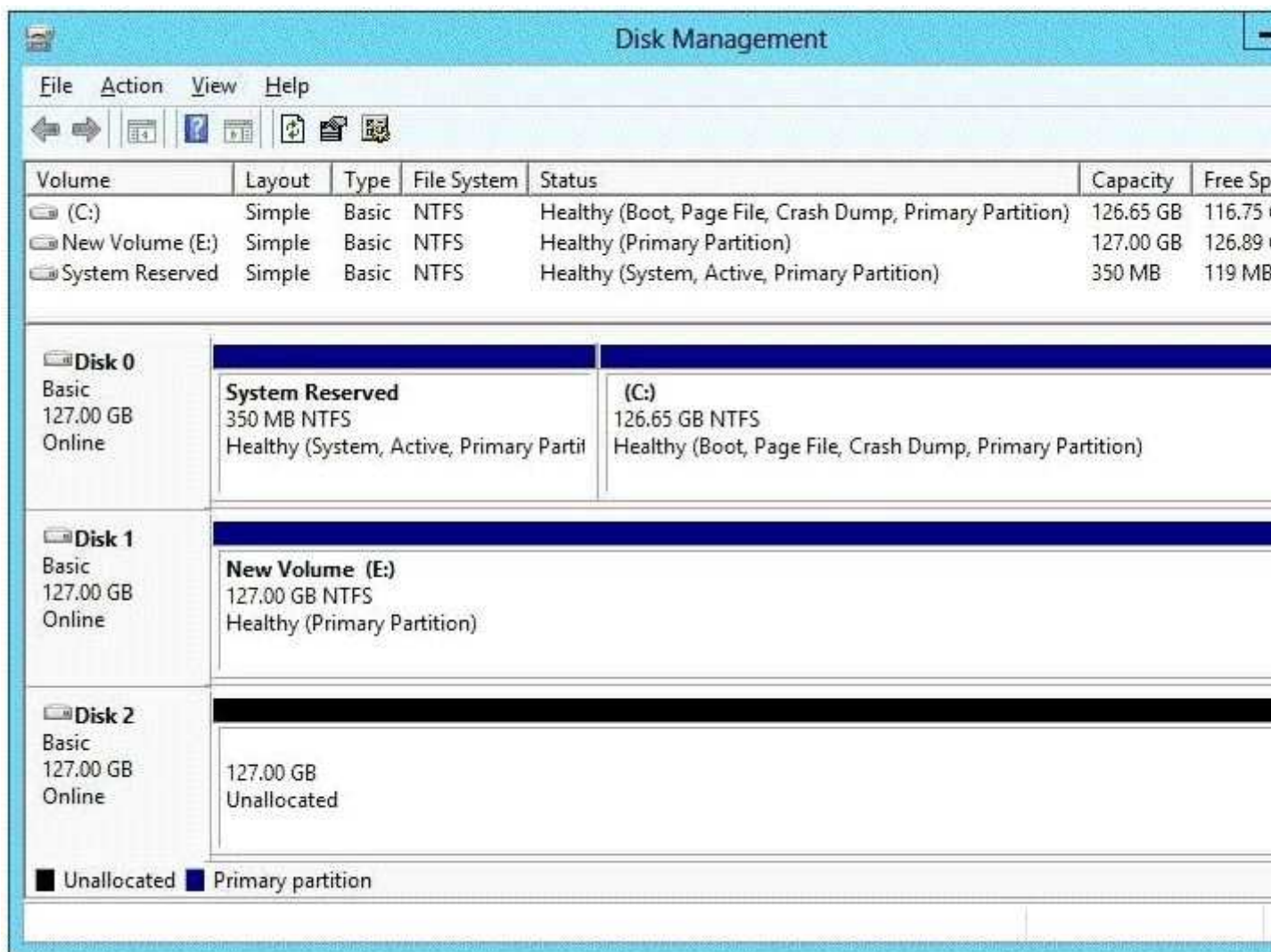
QUESTION 71

You have a server that runs Windows Server 2012. The disks on the server are configured as shown in the exhibit. (Click the Exhibit button.)

You need to create a storage pool that contains Disk 1 and Disk 2.

What should you do first?

Exhibit:



- A. Delete volume E
- B. Convert Disk 1 and Disk 2 to dynamic disks
- C. Convert Disk 1 and Disk 2 to GPT disks
- D. Create a volume on Disk 2

Correct Answer: A

Section: (none)

Explanation

Explanation/Reference:

QUESTION 72

You have a server named Server1 that runs Windows Server 2012. You add a 4-TB disk named Disk 5 to Server1.

You need to ensure that you can create a 3-TB volume on Disk 5.

What should you do?

- A. Create a storage pool.
- B. Convert the disk to a dynamic disk.
- C. Create a VHD, and then attach the VHD.
- D. Convert the disk to a GPT disk.

Correct Answer: D

Section: (none)

Explanation

Explanation/Reference:

QUESTION 73

You have a server named Server1 that has a Server Core installation of Windows Server 2008 R2. Server1 has the DHCP Server server role and the File Server server role installed.

You need to upgrade Server1 to Windows Server 2012 with the graphical user interface (GUI).

The solution must meet the following requirements:

- Preserve the server roles and their configurations.
- Minimize Administrative effort.

What should you do?

- A. On Server1, run setup.exe from the Windows Server 2012 installation media and select Server with a GUI.
- B. Start Server1 from the Windows Server 2012 installation media and select Server Core Installation. When the installation is complete, add the Server Graphical Shell feature.
- C. Start Server1 from the Windows Server 2012 installation media and select Server with a GUI.
- D. On Server1, run setup.exe from the Windows Server 2012 installation media and select Server Core Installation. When the installation is complete, add the Server Graphical Shell feature

Correct Answer: D

Section: (none)

Explanation

Explanation/Reference:

QUESTION 74

Your network contains two servers named Server1 and Server2 that run Windows Server 2012.

You need to install the Remote Desktop Services server role on Server2 remotely from Server1.

Which tool should you use?

- A. The dsadd.exe command
- B. The Server Manager console
- C. The Remote Desktop Gateway Manager console
- D. The Install-RemoteAccess cmdlet

Correct Answer: B

Section: (none)

Explanation

Explanation/Reference:

QUESTION 75

You have a server named Server1 that runs a full installation of Windows Server 2012.

You need to uninstall the graphical user interface (GUI) on Server1.

You must achieve this goal by using the minimum amount of Administrative effort.

What should you do?

- A. Reinstall Windows Server 2012 on the server.

- B. From Server Manager, uninstall the User Interfaces and Infrastructure feature.
- C. From Windows PowerShell, run Uninstall-WindowsFeature PowerShell-ISE
- D. From Windows PowerShell, run Uninstall-WindowsFeature Desktop-Experience.

Correct Answer: B

Section: (none)

Explanation

Explanation/Reference:

QUESTION 76

Your network contains a Windows Server 2012 image named Server12.wim. Server12.wim contains the images shown in the following table.

Index number	Image name
1	Windows Server 2012 Server Standard Core
2	Windows Server 2012 Server Standard
3	Windows Server 2012 Server Datacenter Core
4	Windows Server 2012 Server Datacenter

Server12.wim is located in C:\.

You need to enable the Windows Server Migration Tools feature in the Windows Server 2012 Server Datacenter image.

You want to achieve this goal by using the minimum amount of Administrative effort.

Which command should you run first?

- A. `dism.exe /mount-wim /wimfile:c:\Server12.wim /index:4 /mountdir:c:\mount`
- B. `imagex.exe /capture c: c:\Server12.wim "windows server 2012server datacenter"`
- C. `dism.exe /image: c:\Server12.wim /enable-feature /featurename: servermigration`
- D. `imagex.exe /apply c:\Server12.wim 4 c:\`

Correct Answer: A

Section: (none)

Explanation

Explanation/Reference:



<http://www.gratisexam.com/>