

## Passleader-70-410

Number: 70-410  
Passing Score: 800  
Time Limit: 120 min  
File Version: 12.49



<http://www.gratisexam.com/>



**Vendor:** Microsoft

**Exam Code:** 70-410

**Exam Name:** Installing and Configuring Windows Server 2012 Exam

**Version:** 12.49

## Exam A

### QUESTION 1

How can you manage an newly installed server 2012 core from a another server 2012 with computer manager?

```
Administrator: C:\Windows\system32\cmd.exe - sconfig

=====
Server Configuration
=====

1> Domain/Workgroup:                      Workgroup:  WORKGROUP
2> Computer Name:                          WIN-UJ8HPBRUG65
3> Add Local Administrator
4> Configure Remote Management             Enabled
5> Windows Update Settings:                Manual
6> Download and Install Updates
7> Remote Desktop:                         Disabled
8> Network Settings
9> Date and Time
10> Help improve the product with CEIP     Not participating
11> Windows Activation

12> Log Off User
13> Restart Server
14> Shut Down Server
15> Exit to Command Line

Enter number to select an option:
```

- A.
- B.
- C.
- D.

Correct Answer: A

Section: (none)

Explanation

Explanation/Reference:

```
Administrator: C:\Windows\system32\cmd.exe - sconfig

=====
Server Configuration
=====

1> Domain/Workgroup:                      Workgroup:  WORKGROUP
2> Computer Name:                          WIN-UJ8HPBRUG65
3> Add Local Administrator
4> Configure Remote Management             Enabled
5> Windows Update Settings:                Manual
6> Download and Install Updates
7> Remote Desktop:                         Disabled
8> Network Settings
9> Date and Time
10> Help improve the product with CEIP     Not participating
11> Windows Activation

12> Log Off User
13> Restart Server
14> Shut Down Server
15> Exit to Command Line

Enter number to select an option:
```

### QUESTION 2

Your network contains an active directory domain named Contoso.com. The domain contains two servers named server1 and server2 that run Windows Server 2012. You create a security template named template1 by using the security template snap-in. You need to apply template1 to server2. Which tool should you use?

- A. Security Configuration and Analysis
- B. Server Manager
- C. Security Template
- D. Computer management

**Correct Answer: A**

**Section: (none)**

**Explanation**

### QUESTION 3

Your network contains an active directory domain named Contoso.com. The domain contains a server named Server1 that runs Windows Server 2012.

You create a group Managed Service Account named gservice1. You need to configure a service named service1 to run as the gservice1 account.

How should you configure service1?

Complete collection of 70-410 Exam's Question and answers.

<http://www.passleader.com/>

- A. From Services Console configure the recovery settings
- B. From a command prompt, run sc.exe and specify the config parameter
- C. From Windows PowerShell, run Set-Service and specify the -PassThrough parameter
- D. From a command prompt, run sc.exe and specify the sdset parameter

**Correct Answer: B**

**Section: (none)**

**Explanation**

### QUESTION 4

Your network contains an active directory domain named Contoso.com. The domain contains 100 user accounts that reside in an organizational unit (OU) named OU1. You need to ensure that user named user1 can link and unlink Group Policy Objects (GPOs) to OU1. The solution must minimize the number of permissions assigned to user1.

What should you do?

- A. Run the Delegation of Control Wizard on the Policies containers
- B. Run the Set-GPPermission cmdlet
- C. Run the Delegation of Control Wizard on OU1
- D. Modify the permission on the user1 account

**Correct Answer: C**

**Section: (none)**

**Explanation**

### QUESTION 5

You have a server named Server1 that runs Windows Server 2012. Server1 has 2 dual-core processors and 16 GB of RAM.

You install the Hyper-V server role in Server1.

You plan to create two virtual machines on Server1.

You need to ensure that both virtual machines can use up to 8 GB of memory. The solution must ensure that both virtual machines can be started simultaneously.

What should you configure on each virtual machine?



<http://www.gratisexam.com/>

- A. Dynamic Memory
- B. NUMA topology
- C. Memory weight
- D. Ressource Control

**Correct Answer:** A

**Section:** (none)

**Explanation**

**Explanation/Reference:**

#### QUESTION 6

You have a server named Server1 that runs Windows Server 2012. You promote Server1 to domain controller. You need to view the service location (SVR) records that Server1 registers on DNS. What should you do on Server1?

- A. Open the Srv.sys file
- B. Open the Netlogon.dns file
- C. Run ipconfig/displaydns
- D. Run Get-DnsServerDiagnostics

**Correct Answer:** B

**Section:** (none)

**Explanation**

**Explanation/Reference:**

Complete collection of 70-410 Exam's Question and answers.  
<http://www.passleader.com/>

#### QUESTION 7

Your network contains an active directory domain named Contoso.com. The domain contains a server named Server1 that runs Windows server 2012 and has the Hyper-V server role installed. You have a virtual machine named VM1. VM1 has a snapshot. You need to modify the Snapshot File Location of VM1. What should you do First?

- A. Copy the snapshot file
- B. Pause VM1
- C. Shut down VM1
- D. Delete the snapshot

**Correct Answer:** D

**Section:** (none)

**Explanation**

#### QUESTION 8

You have a server named Server1 that runs Windows Server 2012. Several users are members of the local Administrators group. You need to ensure that all local administrators receive User Account Control (UAC) prompts when they run a Microsoft Management Console (MMC). Which setting should you modify from the Local Security Policy?

To answer, select the appropriate settings in the answer area.



- A.
- B.
- C.
- D.

**Correct Answer:**

**Section: (none)**

**Explanation**

**Explanation/Reference:**



#### QUESTION 9

You have a network printer connected to print server. You need to be able to print if print server Complete collection of 70-410 Exam's Question and answers.

<http://www.passleader.com/>  
goes down.

What should you chose?

- A. brach office direct printing
- B. printer pooling
- C. spooling
- D. Print forwarding

**Correct Answer: A**

**Section: (none)**

**Explanation**

#### QUESTION 10

You have external virtual switch with srv-io enabled with 10 Virtual Machines on it. You need to make the Virtual Machines able to talk only to each other.



- A. remove the vswitch and recreate it as private.
- B. add new vswitch
- C. remove vswitch and recreate it as public
- D. adjust srv-io settings

**Correct Answer:** A

**Section:** (none)

**Explanation**

#### QUESTION 11

Your network contains an Active Directory domain named corp.contoso.com. The domain contains a domain controller named DC1. When you run ping dcl.corp.contoso.com, you receive the result as shown in the exhibit. (Click the Exhibit button.)



The screenshot shows a Windows command prompt window titled "Administrator: C:\Windows\system32\cmd.exe". The command prompt displays the following text:

```
C:\Windows\System32>ping dc1

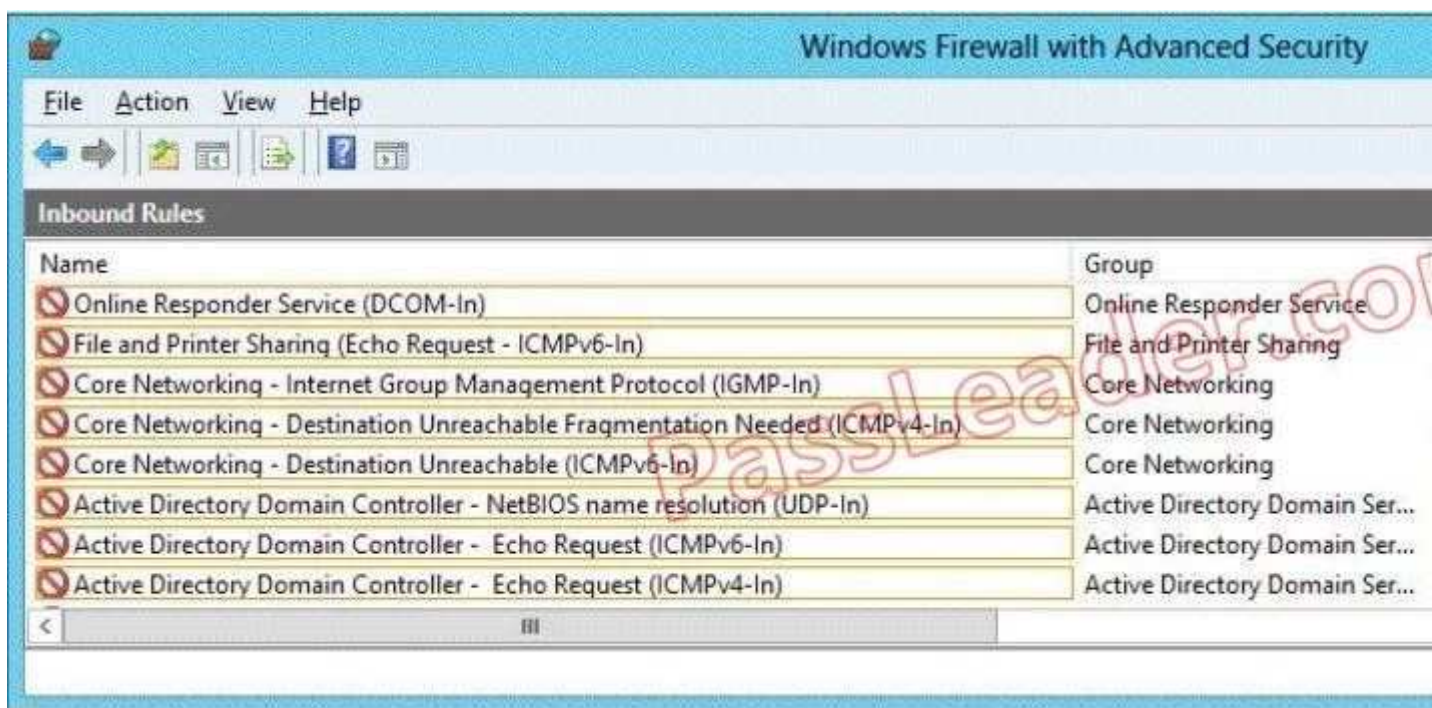
Pinging DC1.corp.contoso.com [10.0.0.1] with 32 bytes of data:
Request timed out.
Request timed out.
Request timed out.
Request timed out.

Ping statistics for 10.0.0.1:
    Packets: Sent = 4, Received = 0, Lost = 4 (100% loss),
C:\Windows\System32>_
```

A large, semi-transparent watermark "PassLeader.com" is visible across the center of the command prompt window.

You need to ensure that DC1 can respond to the Ping command. Which rule should you modify? To answer, select the appropriate rule in the answer area. Complete collection of 70-410 Exam's Question and answers.

<http://www.passleader.com/>



- A.
- B.
- C.
- D.

**Correct Answer:**

**Section: (none)**

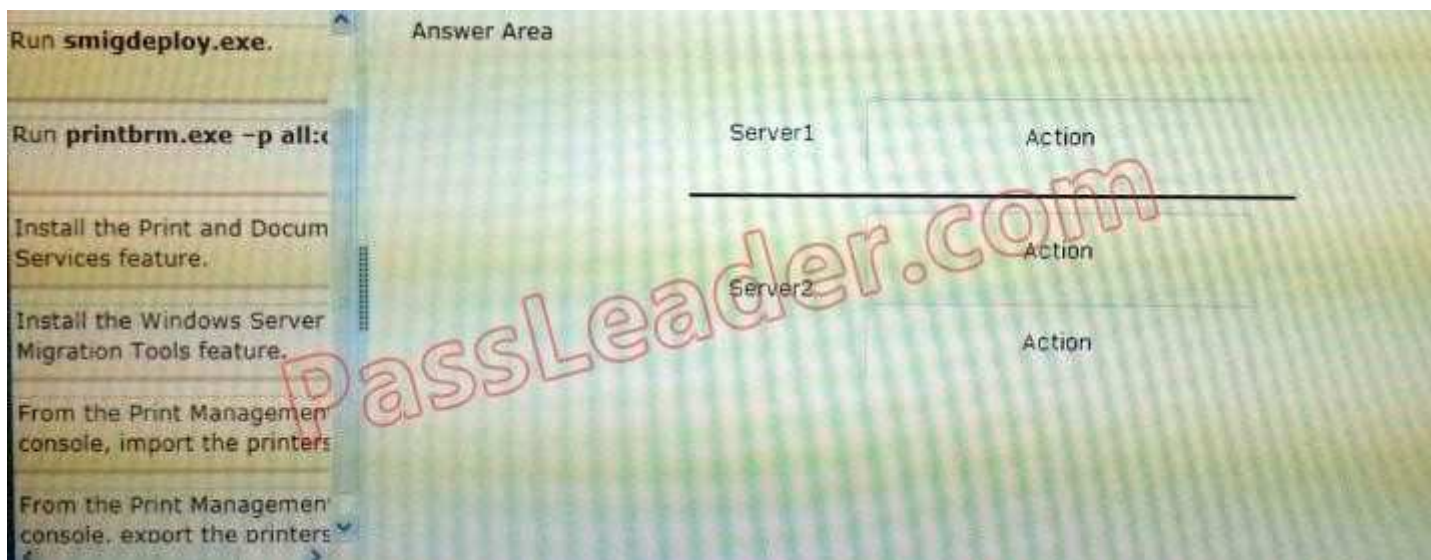
**Explanation**

**Explanation/Reference:**



## QUESTION 12

You have a print server named Server1. Server1 runs Windows Server 2008 R2. You have a file server named Server2. Server2 runs Windows Server 2012. You need to migrate all of the printers on Server1 to Server2. Which actions should you perform on the servers2?



- A.
- B.
- C.
- D.

**Correct Answer:**

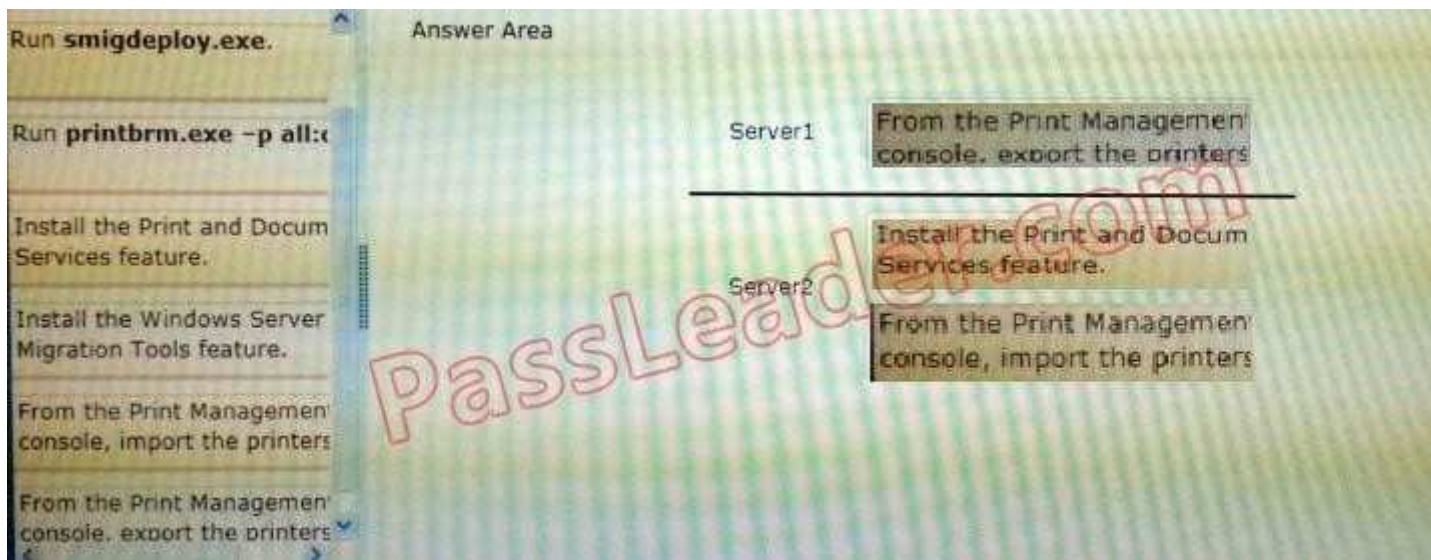
**Section: (none)**

**Explanation**

**Explanation/Reference:**

Complete collection of 70-410 Exam's Question and answers.

<http://www.passleader.com/>



### QUESTION 13

You install a new server named Server 1 that runs a Server Core Installation of Windows Server 2012. You need to join Server 1 to the contoso.com domain. The solution must minimize administrative effort. What should you use?

Name	Operating system	Operation master role
DC1	Windows Server 2012	Domain naming master Schema master
DC2	Windows Server 2008 R2	PDC emulator RID master Infrastructure master



- A. The dsadd.exe command
- B. The New-ADComputer cmdlet
- C. The Djoin.exe command
- D. The Add-Computer cmdlet

**Correct Answer:** D

**Section:** (none)

**Explanation**

#### QUESTION 14

Your network contains an Active Directory domain named contoso.com. The domain contains a server named Server1. Server1 runs Windows Server 2012 and is configured as the only domain controller.

You need to retrieve a list of all the user accounts. The list must include the last time each user was authenticated successfully.

Which Windows PowerShell command should you run?

To answer, drag the appropriate cmdlet or property to the correct locations to complete the PowerShell command in the answer area. Each cmdlet or property may be used once, more than once, or not at all.

You may need to drag the split bar between panes or scroll to view content. Complete collection of 70-410 Exam's Question and answers.

<http://www.passleader.com/>

Get-ADComputer

Get-ADUser

Set-ADComputer

Set-ADUser

Credentials

LastLogonDate

LogonHours

-Properties \* -filter \* | fl name,

PassLeader.com

- A.
- B.
- C.
- D.

**Correct Answer:**

**Section:** (none)

**Explanation**

**Explanation/Reference:**

Get-ADComputer

Get-ADUser

-Properties \* -filter \* | fl name,

LastLogonDate

Set-ADComputer

Set-ADUser

Credentials

LogonHours

PassLeader.com

#### QUESTION 15

Your network contains an Active Directory domain named contoso.com. The domain contains a server named Server1 that runs Windows Server 2012. Server1 contains a single virtual machine named VM1. You need to ensure that a user named User1 can manage the virtual machine settings of VM1. The solution must minimize the number of permissions assigned to User1.

To which group should you add User1?

- A. Server Operators
- B. Administrators
- C. Power Users
- D. Hyper-V Administrators

**Correct Answer: D**

**Section: (none)**

**Explanation**

#### QUESTION 16

Your network contains an Active Directory domain named contoso.com. The domain contains a server named Windows Server 2012. You create a group Managed Service Account named gservice1. You need to configure a service named Service1 to run as the gservice1 account.

How should you configure Service1?

Complete collection of 70-410 Exam's Question and answers.

<http://www.passleader.com/>

- A. From the Services console, configure the General settings.
- B. From Windows PowerShell, run Set-Service and specify the -PassThrough parameter.
- C. From a command prompt, run sc.exe and specify the config parameter.
- D. From the Services console, configure the Recovery settings.

**Correct Answer: C**

**Section: (none)**

**Explanation**

#### QUESTION 17

Your network contains an Active Directory domain named contoso.com. The domain contains a domain controller named DC1 that runs Windows Server 2012. A user named User1 attempts to log on to DO, but receives the error message shown in the exhibit. (Click the Exhibit button.)



You need to ensure that User1 can log on to DC1. What should you do?

- A. Modify the Account is sensitive and cannot be delegated setting of the User1 account.
- B. Grant User1 the Allow log on locally user right.
- C. Modify the Logon Workstations setting of the User1 account.
- D. Add User1 to the Remote Management Users group.

**Correct Answer: B**

**Section: (none)**

**Explanation**

#### QUESTION 18

Your network contains a single Active Directory domain named contoso.com. The network contains two subnets. The subnets are configured as shown in the following table. Complete collection of 70-410 Exam's Question and answers.

<http://www.passleader.com/>

Subnet name	Network IP address
MainOffice	172.16.0.0
Warehouse	192.168.1.0

The network contains a member server named Server1 that runs Windows Server 2012. Server1 has the DHCP Server server role installed. Server1 is configured to lease IP addresses to the two subnets. You discover that computers on the Warehouse subnet that have static IP addresses can communicate with the computers on the MainOffice subnet. Computers on the Warehouse subnet that obtain an IP address automatically can only communicate with other computers on the Warehouse subnet. You need to ensure that all of the computers on the Warehouse subnet can communicate with the computers on the MainOffice subnet. Which DHCP option should you configure on Server1?

- A. 003 Router
- B. 011 Resource Location Servers
- C. 020 Nonlocal Source Routing
- D. 019 IP Layer Forwarding

**Correct Answer:** A

**Section:** (none)

**Explanation**

#### QUESTION 19

Your network contains an Active Directory domain named contoso.com. The network contains 500 client computers that run Windows 8. All of the client computers connect to the Internet by using a web proxy. You deploy a server named Server1 that runs Windows Server 2012. Server1 has the DNS Server server role installed. You configure all of the client computers to use Server1 as their primary DNS server. You need to prevent Server1 from attempting to resolve Internet host names for the client computers. What should you do on Server1?

- A. Configure the Security settings of the contoso.com zone.
- B. Remove all root hints.
- C. Create a primary zone named ".".
- D. Create a primary zone named "root".
- E. Create a primary zone named "GlobalNames".
- F. Create a forwarder that points to 169.254.0.1.
- G. Create a stub zone named "root".
- H. Create a zone delegation for GlobalNames.contoso.com.

**Correct Answer:** BC

**Section:** (none)

**Explanation**

#### QUESTION 20

Your company has a remote office that contains 600 client computers on a single subnet. You need to select a subnet mask for the network that will support all of the client computers. The solution must minimize the number of unused addresses. Which subnet mask should you select?

- A. 255.255.252.0  
Complete collection of 70-410 Exam's Question and answers.  
<http://www.passleader.com/>
- B. 255.255.254.0
- C. 255.255.255.0
- D. 255.255.255.128

**Correct Answer:** A

**Section:** (none)

**Explanation**

#### QUESTION 21



Your network contains three servers that run Windows Server 2012. The servers are configured as shown in the following table.

Server name	Server role
Server1	Active Directory Domain Services DHCP Server DNS Server
Server2	Remote Access DHCP Server
Server3	File and Storage Services

Server3 is configured to obtain an IP address automatically. You need to prevent Server3 from receiving an IP address from Server1. What should you create on Server1?

- A. A reservation
- B. A filter
- C. A scope option
- D. An exclusion

**Correct Answer: B**

**Section: (none)**

**Explanation**

#### QUESTION 22

Your network contains an Active Directory forest. The forest contains two domains named contoso.com and corp.contoso.com. The forest contains four domain controllers. The domain controllers are configured as shown in the following table.

Name	Domain	Operating system	Configuration
DC1	contoso.com	Windows Server 2008 R2	PDC emulator Infrastructure master RID master
DC2	contoso.com	Windows Server 2012	Domain naming master Schema master Global catalog
DC3	corp.contoso.com	Windows Server 2008 R2	PDC emulator Infrastructure master RID master
DC4	corp.contoso.com	Windows Server 2012	Global catalog

All domain controllers are DNS servers. In the corp.contoso.com domain, you plan to deploy a Complete collection of 70-410 Exam's Question and answers.

<http://www.passleader.com/>

new domain controller named DCS.

You need to identify which domain controller must be online to ensure that DCS can be promoted successfully to a domain controller.

Which domain controller should you identify?

- A. DC1
- B. DC2
- C. DC3
- D. DC4

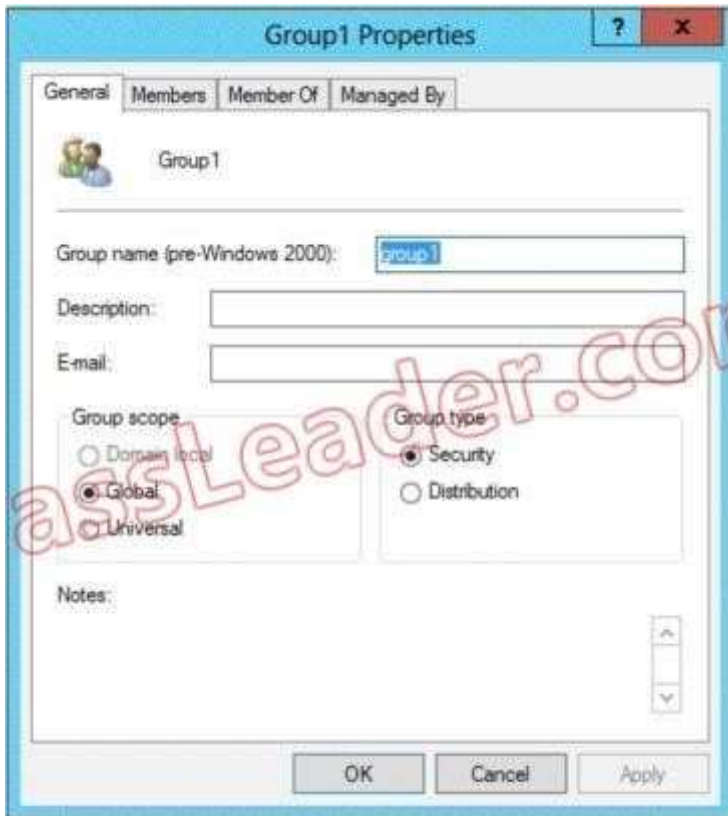
**Correct Answer: C**

**Section: (none)**

**Explanation**

**QUESTION 23**

Your network contains an Active Directory domain named contoso.com. You log on to a domain controller by using an account named Admin1. Admin1 is a member of the Domain Admins group. You view the properties of a group named Group1 as shown in the exhibit. (Click the Exhibit button.) Group1 is located in an organizational unit (OU) named OU1. You need to ensure that users from Group1 can modify the Security settings of OU1 only. What should you do from Active Directory Users and Computers?



- A. Modify the Managed By settings on OU1.
- B. Right-click contoso.com and select Delegate Control.
- C. Right-click OU1 and select Delegate Control.
- D. Modify the Security settings of Group1.

**Correct Answer: C**

**Section: (none)**

**Explanation**

**Explanation/Reference:**

Complete collection of 70-410 Exam's Question and answers.  
<http://www.passleader.com/>

**QUESTION 24**

Your network contains an Active Directory forest named contoso.com. All domain controllers currently run Windows Server 2008 R2. You plan to install a new domain controller named DC4 that runs Windows Server 2012. The new domain controller will have the following configurations:

- ?Schema master
- ?Global catalog server
- ?DNS Server server role
- ?Active Directory Certificate Services server role

You need to identify which configurations Administrators by using the Active Directory Installation Wizard. Which two configurations should you identify? (Each correct answer presents part of the solution. Choose two.)

- A. Transfer the schema master.
- B. Enable the global catalog server.
- C. Install the DNS Server role
- D. Install the Active Directory Certificate Services role.

**Correct Answer:** AD

**Section:** (none)

**Explanation**

#### QUESTION 25

Your network contains an Active Directory domain named contoso.com. The domain contains two domain controllers. The domain controllers are configured as shown in the following table.

Name	Operating system	Operation master role
DC1	Windows Server 2012	Domain naming master Schema master
DC2	Windows Server 2008 R2	PDC emulator RID master Infrastructure master

In the perimeter network, you install a new server named Server1 that runs Windows Server 2012. Server1 is in a workgroup. You need to perform an offline domain join of Server1 to the contoso.com domain. What should you do first?

- A. Transfer the PDC emulator role to Dc1.
- B. Run the djoin.exe command.
- C. Run the dsadd.exe command.
- D. Transfer the infrastructure master role to DC1.

**Correct Answer:** B

**Section:** (none)

**Explanation**

#### QUESTION 26

Your network contains two Active Directory forests named adatum.com and contoso.com. Both forests contain multiple domains. A two-way trust exists between the forests. The contoso.com domain contains a domain local security group named Group1. Group1 contains contoso\user1 Complete collection of 70-410 Exam's Question and answers.

<http://www.passleader.com/>

and adatum\user1.

You need to ensure that Group1 can only contain users from the contoso.com domain.

Which three actions should you perform?

To answer, move three actions from the list of actions to the answer area and arrange them in the correct order.

Actions	Answer Area
Remove adatum\user1 from Group1.	
Convert Group1 to a distribution group.	
Remove contoso\user1 from Group1.	
Convert Group1 to a global group.	
Convert Group1 to a universal group.	

- A.
- B.
- C.
- D.

**Correct Answer:**

**Section: (none)**

**Explanation**

**Explanation/Reference:**

Actions	Answer Area
	Convert Group1 to a universal group.
	Remove adatum\user1 from Group1.
Remove contoso\user1 from Group1.	Convert Group1 to a distribution group.
Convert Group1 to a global group.	

#### QUESTION 27

Your network contains an Active Directory domain named contoso.com. You discover that when you join client computers to the domain manually, the computer accounts are created in the Computers container. You need to ensure that new computer accounts are created automatically in an organizational unit (OU) named Corp.

Which tool should you use?

- A. net.exe
- Complete collection of 70-410 Exam's Question and answers.  
<http://www.passleader.com/>



- B. redircmp.exe
- C. regedit.exe
- D. dsadd.exe

**Correct Answer:** B

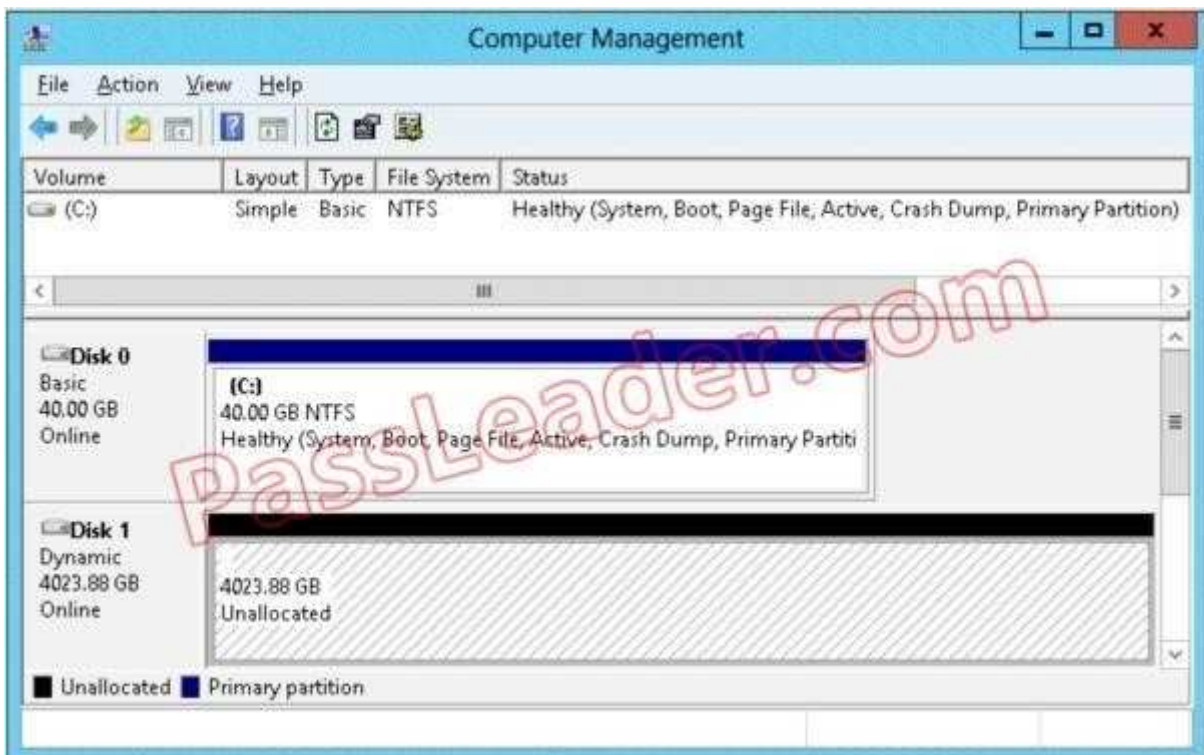
**Section:** (none)

**Explanation**

#### QUESTION 28

You have a server named Server2 that runs Windows Server 2012. Server2 has the Hyper-V server role installed. The disks on Server2 are configured as shown in the exhibit. (Click the Exhibit button.) You create a virtual machine on Server2 named VM1. You need to ensure that you can configure a pass-through disk for VM1.

What should you do?



- A. Convert Disk 1 to a basic disk.
- B. Take Disk 1 offline.
- C. Create a partition on Disk 1.
- D. Convert Disk 1 to a MBR disk.

**Correct Answer:** B

**Section:** (none)

**Explanation**

#### QUESTION 29

You have a server named Server1 that runs Windows Server 2012. Server1 has the Hyper-V server role installed. Server1 is connected to two Fibre Channel SANs and is configured as shown in the following table.

Complete collection of 70-410 Exam's Question and answers.

<http://www.passleader.com/>

Host bus adapter (HBA) name	Fibre Channel SAN name
HBA1	SAN1
HBA2	SAN2
HBA3	SAN1
HBA4	SAN2

You have a virtual machine named VM1. You need to configure VM1 to connect to SAN1. What should you do first?

- A. Add one HBA
- B. Create a Virtual Fibre Channel SAN.
- C. Create a Hyper-V virtual switch.
- D. Configure network adapter teaming.

**Correct Answer: B**

**Section: (none)**

**Explanation**

### QUESTION 30

You have a file server named Server1 that runs Windows Server 2012. Server1 has following hardware configurations:

?16GB of RAM

?A single quad-core CPU

?Three network teams that have two network adapters each

You add additional CPUs and RAM to Server1. You repurpose Server1 as a virtualization host. You install the Hyper-V server role on Server1. You need to create four external virtual switches in Hyper-V. Which cmdlet should you run first?

- A. Add-VMNetworkAdapter
- B. Add-NetLbfoTeamNic
- C. Remove-NetLbfoTeam
- D. Set-NetAdapter

**Correct Answer: C**

**Section: (none)**

**Explanation**

### QUESTION 31

Your network contains an Active Directory domain named contoso.com. The domain contains a domain controller named DC1 that runs Windows Server 2012. You need to configure a central store for the Group Policy Administrative Templates. What should you do on DC1?

- A. From Server Manager, create a storage pool.
- B. From Windows Explorer, copy the PolicyDefinitions folder to the SYSVOL\contoso.com\policies folder.
- C. From Server Manager, add the Group Policy Management feature
- D. From Windows Explorer, copy the PolicyDefinitions folder to the NETLOGON share.

**Correct Answer: B**

**Section: (none)**

**Explanation**

### QUESTION 32

Complete collection of 70-410 Exam's Question and answers.

<http://www.passleader.com/>

You install Windows Server 2012 on a standalone server named Server1. You configure Server1 as a VPN server.

You need to ensure that client computers can establish PPTP connections to Server1. Which two firewall rules should you create? (Each correct answer presents part of the solution. Choose two.)

- A. An inbound rule for protocol 47
- B. An outbound rule for protocol 47
- C. An inbound rule for TCP port 1723
- D. An inbound rule for TCP port 1701
- E. An outbound rule for TCP port 1723
- F. An outbound rule for TCP port 1701

**Correct Answer:** AC

**Section:** (none)

**Explanation**

### QUESTION 33

Your network contains an Active Directory domain named adatum.com. The computer accounts for all member servers are located in an organizational unit (OU) named Servers. You link a Group Policy object (GPO) to the Servers OU.

You need to ensure that the domain's Backup Operators group is a member of the local Backup Operators group on each member server. The solution must not remove any groups from the local Backup Operators groups.

What should you do?

- A. Add a restricted group named adatum\Backup Operators. Add Backup Operators to the This group is a member of list.
- B. Add a restricted group named adatum\Backup Operators. Add Backup Operators to the Members of this group list.
- C. Add a restricted group named Backup Operators. Add adatum\Backup Operators to the This group is a member of list.
- D. Add a restricted group named Backup Operators. Add adatum\Backup Operators to the Members of this group list.

**Correct Answer:** A

**Section:** (none)

**Explanation**

### QUESTION 34

Your network contains an Active Directory domain named contoso.com. All servers run Windows Server 2012. An application named Appl.exe is installed on all client computers. Multiple versions of Appl.exe are installed on different client computers. Appl.exe is digitally signed. You need to ensure that only the latest version of Appl.exe can run on the client computers.

What should you create?

- A. An application control policy packaged app rule
- B. A software restriction policy certificate rule
- C. An application control policy Windows Installer rule
- D. An application control policy executable rule

**Correct Answer:** D

**Section:** (none)

**Explanation**

### QUESTION 35

Your network contains an Active Directory domain named contoso.com. All domain controllers Complete collection of 70-410 Exam's Question and answers.

<http://www.passleader.com/>

run Windows Server 2012. You need to ensure that the local Administrator account on all computers is renamed to L\_Admin. Which Group Policy settings should you modify?

- A. Security Options
- B. User Rights Assignment
- C. Restricted Groups
- D. Preferences

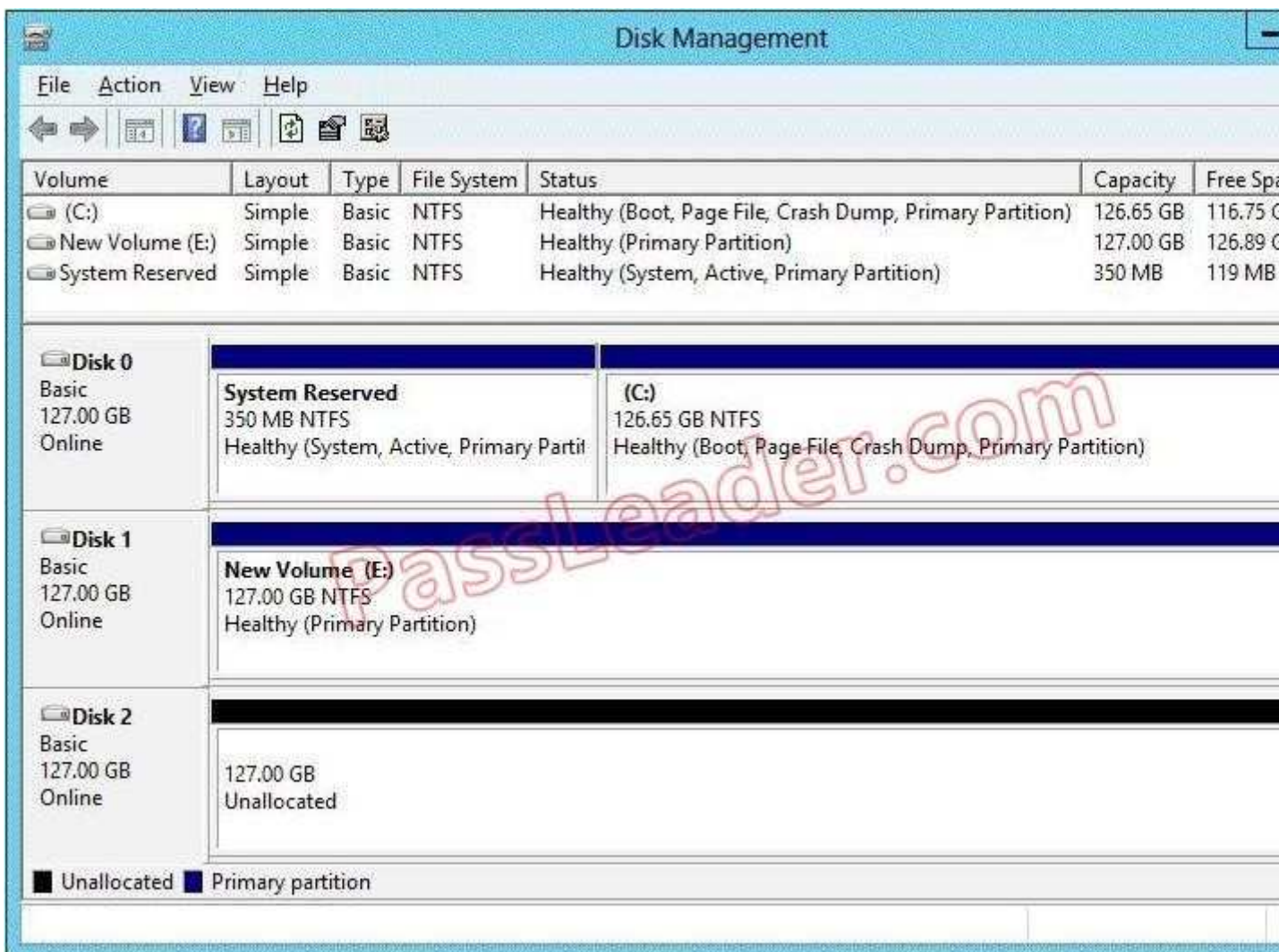
**Correct Answer: A**

**Section: (none)**

**Explanation**

### QUESTION 36

You have a server that runs Windows Server 2012. The disks on the server are configured as shown in the exhibit. (Click the Exhibit button.) You need to create a storage pool that contains Disk 1 and Disk 2. What should you do first?



- A. Delete volume E
- B. Convert Disk 1 and Disk 2 to dynamic disks
- C. Convert Disk 1 and Disk 2 to GPT disks
- D. Create a volume on Disk 2



**Correct Answer:** A

**Section:** (none)

**Explanation**

#### **QUESTION 37**

You have a server named Server1 that runs Windows Server 2012. You add a 4-TB disk named Disk 5 to Server1. You need to ensure that you can create a 3-TB volume on Disk 5. What should you do?

Complete collection of 70-410 Exam's Question and answers.

<http://www.passleader.com/>

- A. Create a storage pool.
- B. Convert the disk to a dynamic disk.
- C. Create a VHD, and then attach the VHD.
- D. Convert the disk to a GPT disk.

**Correct Answer:** D

**Section:** (none)

**Explanation**

#### **QUESTION 38**

You have a server named Server1 that has a Server Core installation of Windows Server 2008 R2. Server1 has the DHCP Server server role and the File Server server role installed. You need to upgrade Server1 to Windows Server 2012 with the graphical user interface (GUI).

The solution must meet the following requirements:

?Preserve the server roles and their configurations.

?Minimize Administrative effort.

What should you do?

- A. On Server1, run setup.exe from the Windows Server 2012 installation media and select Server with a GUI.
- B. Start Server1 from the Windows Server 2012 installation media and select Server Core Installation. When the installation is complete, add the Server Graphical Shell feature.
- C. Start Server1 from the Windows Server 2012 installation media and select Server with a GUI.
- D. On Server1, run setup.exe from the Windows Server 2012 installation media and select Server Core Installation. When the installation is complete, add the Server Graphical Shell feature

**Correct Answer:** D

**Section:** (none)

**Explanation**

#### **QUESTION 39**

Your network contains two servers named Server1 and Server2 that run Windows Server 2012. You need to install the Remote Desktop Services server role on Server2 remotely from Server1.

Which tool should you use?

- A. The dsadd.exe command
- B. The Server Manager console
- C. The Remote Desktop Gateway Manager console
- D. The Install-RemoteAccess cmdlet

**Correct Answer:** B

**Section:** (none)

**Explanation**

**QUESTION 40**

You have a server named Server1 that runs a full installation of Windows Server 2012. You need to uninstall the graphical user interface (GUI) on Server1. You must achieve this goal by using the minimum amount of Administrative effort. What should you do?

- A. Reinstall Windows Server 2012 on the server.
- B. From Server Manager, uninstall the User Interfaces and Infrastructure feature.
- C. From Windows PowerShell, run Uninstall-WindowsFeature PowerShell-ISE
- D. From Windows PowerShell, run Uninstall-WindowsFeature Desktop-Experience.

**Correct Answer: B**

**Section: (none)**

**Explanation**

**Explanation/Reference:**

Complete collection of 70-410 Exam's Question and answers.

<http://www.passleader.com/>

**QUESTION 41**

Your network contains a server named Server1 that runs Windows Server 2012. Server1 has the Hyper-V server role installed. Server1 hosts four virtual machines named VM1, VM2, VM3, and VM4. Server1 is configured as shown in the following table.

Hardware component	Configuration
Processor	Eight quad-core CPUs that have non-uniform memory access (NUMA)
Memory	32 GB of RAM
Disk	Two local 4-TB disks
Network	Eight network adapters VMQ-supported PCI-SIG-supported

You install Windows Server 2012 on VM2 by using Windows Deployment Services (WDS). You need to ensure that the next time VM2 restarts, you can connect to the WDS server by using PXE. Which virtual machine setting should you configure for VM2?

- A. NUMA topology
- B. Resource control
- C. Resource metering
- D. Virtual Machine Chimney
- E. The VLAN ID
- F. Processor Compatibility
- G. The startup order
- H. Automatic Start Action
- I. Integration Services
- J. Port mirroring
- K. Single-root I/O virtualization

**Correct Answer: G**

**Section: (none)**

**Explanation**

**QUESTION 42**

Your network contains an Active Directory domain named contoso.com. The domain contains two domain controllers. The domain controllers are configured as shown in the following table.

Name	Operating system	Operation master role
DC1	Windows Server 8	<ul style="list-style-type: none"><li>• Domain naming master</li><li>• Schema master</li></ul>
DC2	Windows Server 2008 R2	<ul style="list-style-type: none"><li>• PDC emulator</li><li>• RID master</li><li>• Infrastructure master</li></ul>

In the perimeter network, you install a new server named Server1 that runs a Server Core Complete collection of 70-410 Exam's Question and answers.

<http://www.passleader.com/>

Installation of Windows Server 2012. You need to join Server1 to the contoso.com domain. What should you use?

- A. The New-ADComputer cmdlet
- B. The djoin.exe command
- C. The dsadd.exe command
- D. The Add-Computer cmdlet

**Correct Answer: B**

**Section: (none)**

**Explanation**

#### QUESTION 43

Your network contains an Active Directory domain named adatum.com. The domain contains three domain controllers. DC3 loses network connectivity due to a hardware failure. You plan to remove DC3 from the domain. You log on to DC3. You need to identify which service location (SRV) records are registered by DC3. What should you do?

Name	Operating system	Additional server roles
DC1	Windows Server 2008 R2	DNS Server
DC2	Windows Server 2012	DNS Server
DC3	Windows Server 2012	None

- A. Open the %windir%\system32\config\netlogon.dns file.
- B. Run dcdiag /test:dns
- C. Open the %windir%\system32\dns\backup\adatum.com.dns file.
- D. Run ipconfig /displaydns.

**Correct Answer: A**

**Section: (none)**

**Explanation**

#### QUESTION 44

Your network contains an Active Directory forest that contains three domains. A group named Group1 is configured as a domain local distribution group in the forest root domain. You plan to grant Group1 read-only access to a shared folder named Share1. Share1 is located in a child domain.

You need to ensure that the members of Group1 can access Share1.

What should you do first?

- A. Convert Group1 to a global distribution group.
- B. Convert Group1 to a universal security group.
- C. Convert Group1 to a universal distribution group.

D. Convert Group1 to a domain local security group

**Correct Answer:** B

**Section:** (none)

**Explanation**

#### QUESTION 45

Your network contains an Active Directory domain named contoso.com. All domain controllers run Windows Server 2008 R2. One of the domain controllers is named DC1. The network contains a member server named Server1 that runs Windows Server 2012. You need to promote Server1 to a domain controller by using install from media (IFM).

What should you do first?

Complete collection of 70-410 Exam's Question and answers.

<http://www.passleader.com/>

- A. Create a system state backup of DC1.
- B. Create IFM media on DC1.
- C. Upgrade DC1 to Windows Server 2012
- D. Run the Active Directory Domain Services Configuration Wizard on Server1.
- E. Run the Active Directory Domain Services Installation Wizard on DC1

**Correct Answer:** C

**Section:** (none)

**Explanation**

#### QUESTION 46

Your network contains an Active Directory domain named contoso.com. The domain contains 100 servers. The servers are contained in an organizational unit (OU) named ServersOU. You need to create a group named Group1 on all of the servers in the domain.

You must ensure that Group1 is added only to the servers.

What should you configure?

- A. a Local Users and Groups preferences setting in a Group Policy linked to the Domain Controllers OU
- B. a Restricted Groups setting in a Group Policy linked to the domain
- C. a Local Users and Groups preferences setting in a Group Policy linked to ServersOU
- D. a Restricted Groups setting in a Group Policy linked to ServersOU

**Correct Answer:** C

**Section:** (none)

**Explanation**

#### QUESTION 47

Your network contains an Active Directory domain named adatum.com. The domain contains several thousand member servers that run Windows Server 2012. All of the computer accounts for the member servers are in an organizational unit (OU) named ServersAccounts. Servers are restarted only occasionally. You need to identify which servers were restarted during the last two days.

What should you do?

- A. Run dsquery computer and specify the -staipwd parameter.
- B. Run Get-ADComputer and specify the SearchScope parameter.
- C. Run Get-ADComputer and specify the lastLogon property.
- D. Run dsquery server and specify the -op parameter

**Correct Answer:** C

**Section:** (none)

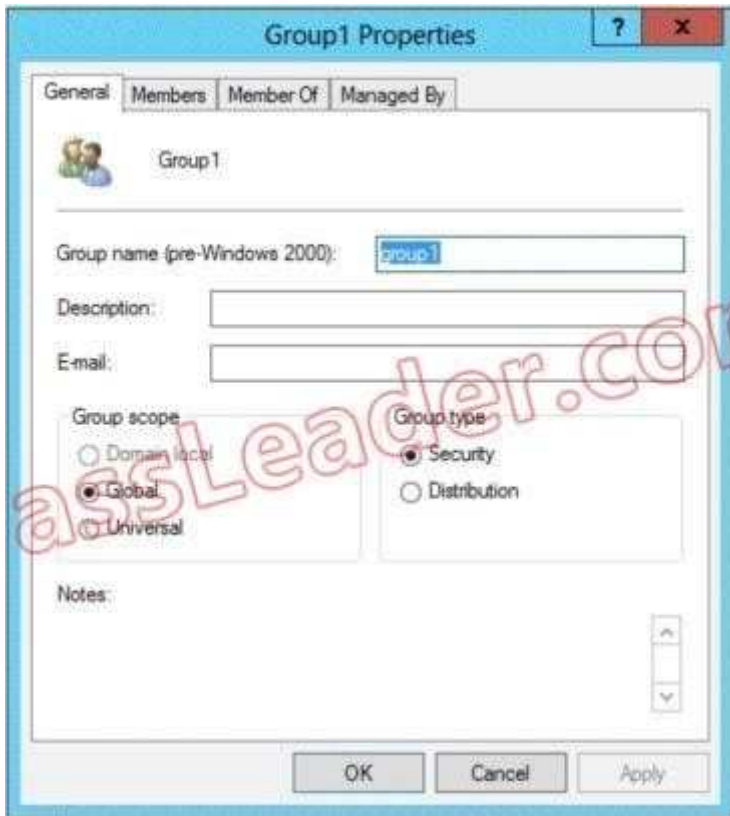
**Explanation**

**QUESTION 48**

Your network contains an Active Directory domain named contoso.com. You log on to a domain controller by using an account named Admin1. Admin1 is a member of the Domain Admins group. You view the properties of a group named Group1 as shown in the exhibit. (Click the Exhibit button.) Group1 is located in an organizational unit (OU) named OU1. You need to ensure that you can modify the Security settings of Group1 by using Active Directory Users and Computers.

What should you do from Active Directory Users and Computers? Complete collection of 70-410 Exam's Question and answers.

<http://www.passleader.com/>



- A. From the View menu, select Users, Contacts, Groups, and Computers as containers.
- B. Right-click OU1 and select Delegate Control
- C. From the View menu, select Advanced Features.
- D. Right-click contoso.com and select Delegate Control.

**Correct Answer: C**

**Section: (none)**

**Explanation**

**QUESTION 49**

Your network contains an Active Directory domain named contoso.com. The domain contains two domain controllers named DC1 and DC2. You install Windows Server 2012 on a new computer named DC3. You need to manually configure DC3 as a domain controller. Which tool should you use?

- A. Server Manager
- B. winrm.exe
- C. Active Directory Domains and Trusts
- D. dcpromo.exe

**Correct Answer: A**

**Section: (none)**



## Explanation

### QUESTION 50

You have a server that runs Windows Server 2012. The server contains the disks configured as shown in the following table.

Complete collection of 70-410 Exam's Question and answers.

<http://www.passleader.com/>

Disk name	Partition table type	Disk storage type	Unallocated disk space
Disk 0	GPT	Dynamic	2 TB
Disk 1	MBR	Basic	4 TB
Disk 2	GPT	Dynamic	4 TB
Disk 3	GPT	Dynamic	4 TB
Disk 4	MBR	Basic	2 TB

You need to create a volume that can store up to 3 TB of user files. The solution must ensure that the user files are available if one of the disks in the volume fails.

What should you create?

- A. a mirrored volume on Disk 1 and Disk 4
- B. a mirrored volume on Disk 1 and Disk 3
- C. a RAID-5 volume on Disk 1, Disk 2, and Disk 3
- D. a spanned volume on Disk 0 and Disk 4

**Correct Answer: B**

**Section: (none)**

**Explanation**

### QUESTION 51

You have a server named Core1 that has a Server Core Installation of Windows Server 2012. Core1 has the Hyper-V server role installed. Core1 has two network adapters from different third-party hardware vendors.

You need to configure network traffic failover to prevent connectivity loss if a network adapter fails.

What should you use?

- A. New-NetSwitchTeam
- B. Add-NetSwitchTeamMember
- C. Install-Feature
- D. netsh.exe

**Correct Answer: A**

**Section: (none)**

**Explanation**

### QUESTION 52

You have a server named Server1 that runs Windows Server 2012. You connect three new hard disks to Server1.

You need to create a storage space that contains the three disks. The solution must meet the following requirements:

?Provide fault tolerance if a single disk fails.

?Maximize the amount of files that can be stored in the storage space.

What should you create?

- A. A simple space
- B. A spanned volume
- C. A mirrored space
- D. A parity space

Complete collection of 70-410 Exam's Question and answers.  
<http://www.passleader.com/>

**Correct Answer:** D

**Section:** (none)

**Explanation**

#### QUESTION 53

You perform a Server Core Installation of Windows Server 2012 on a server named Server1. You need to add a graphical user interface (GUI) to Server1.

Which tool should you use?

- A. The setup.exe command
- B. The dism.exe command
- C. The imagex.exe command
- D. The Add-WindowsPackage cmdlet

**Correct Answer:** B

**Section:** (none)

**Explanation**

#### QUESTION 54

You have a server named Server1 that runs Windows Server 2012. Server1 has five network adapters. Three of the network adapters are connected to a network named LAN1. The two other network adapters are connected to a network named LAN2.

You need to create a network adapter team from the three network adapters connected to LAN 1.

Which tool should you use?

- A. Routing and Remote Access
- B. Network and Sharing Center
- C. Server Manager
- D. Network Load Balancing Manager

**Correct Answer:** C

**Section:** (none)

**Explanation**

#### QUESTION 55

You have a server named Server1 that runs Windows Server 2012. You need to remove Windows Explorer, Windows Internet Explorer, and all related components and files from Server1. What should you run on Server1?

- A. Uninstall-WindowsFeature Server-Gui-Mgmt-Infra Remove
- B. Uninstall-WindowsFeature Server-Gui-Shell Remove
- C. `msiexec.exe /uninstall iexplore.exe /x`
- D. `msiexec.exe /uninstall explorer.exe /x`

**Correct Answer:** B

**Section:** (none)

**Explanation**

#### QUESTION 56

You have a server named Server1 that runs Windows Server 2012. Server1 has the Hyper-V server role installed. On Server1, you create a virtual machine named VM1. VM1 has a legacy network adapter. You need to assign a specific amount of available network bandwidth to VM1. What should you do first?

- A. Remove the legacy network adapter, and then run the Set-VMNetworkAdaptercmdlet.
- B. Add a second legacy network adapter, and then run the Set-VMNetworkAdaptercmdlet Complete collection of 70-410 Exam's Question and answers.  
<http://www.passleader.com/>
- C. Add a second legacy network adapter, and then configure network adapter teaming.
- D. Remove the legacy network adapter, and then add a network adapter

**Correct Answer: D**

**Section: (none)**

**Explanation**

#### QUESTION 57

Your network contains an Active Directory domain named adatum.com. The domain contains a server named Server1 that runs Windows Server 2012. On a server named Core1, you perform a Server Core Installation of Windows Server 2012. You join Core1 to the adatum.com domain. You need to ensure that you can use Event Viewer on Server1 to view the event logs on Core1. What should you do on Core1?

- A. Run the Enable-NetFirewallRulecmdlet.
- B. Run sconfig.exeand configure remote management
- C. Run the Disable-NetFirewallRulecmdlet.
- D. Run sconfig.exeand configure the network settings.

**Correct Answer: A**

**Section: (none)**

**Explanation**

#### QUESTION 58

Your network contains a file server named Server1 that runs Windows Server 2012. All client computers run Windows 8.

You need to ensure that when users are connected to the network, they always use local offline files that are cached from Server1.

Which Group Policy setting should you configure?



<http://www.gratisexam.com/>

- A. Configure slow-link mode.
- B. Configure Slow link speed
- C. Enable file synchronization on costed networks
- D. Turn on economical application of Administratively assigned Offline Files.

**Correct Answer: A**

**Section: (none)**

**Explanation**

**Explanation/Reference:**

**QUESTION 59**

Your network contains an Active Directory domain named contoso.com. All servers run either Windows Server 2008 R2 or Windows Server 2012. All client computers run either Windows 7 or Windows 8. The domain contains a member server named Server1 that runs Windows Server 2012. Server1 has the File and Storage Services server role installed. On Server1, you create a share named Share1. You need to ensure that users can use Previous Versions to restore the files in Share1. What should you configure on Server1?

- A. The Shadow Copies settings
- B. A Windows Server Backup schedule
- C. A data recovery agent
- D. The Recycle Bin properties

**Correct Answer:** A

**Section:** (none)

**Explanation**

**QUESTION 60**

Complete collection of 70-410 Exam's Question and answers.

<http://www.passleader.com/>

You have a server named Server1 that runs Windows Server 2012. Server1 has the Print and Document Services server role installed. Server1 is connected to two identical print devices. You need to ensure that users can submit print jobs to the print devices. The solution must ensure that if one print device fails, the print jobs will print automatically on the other print device. What should you do on Server1?

- A. Add two printers and configure the priority of each printer.
- B. Add one printer and configure printer pooling.
- C. Install the Network Load Balancing (NLB) feature, and then add one printer.
- D. Install the Failover Clustering feature, and then add one printer

**Correct Answer:** B

**Section:** (none)

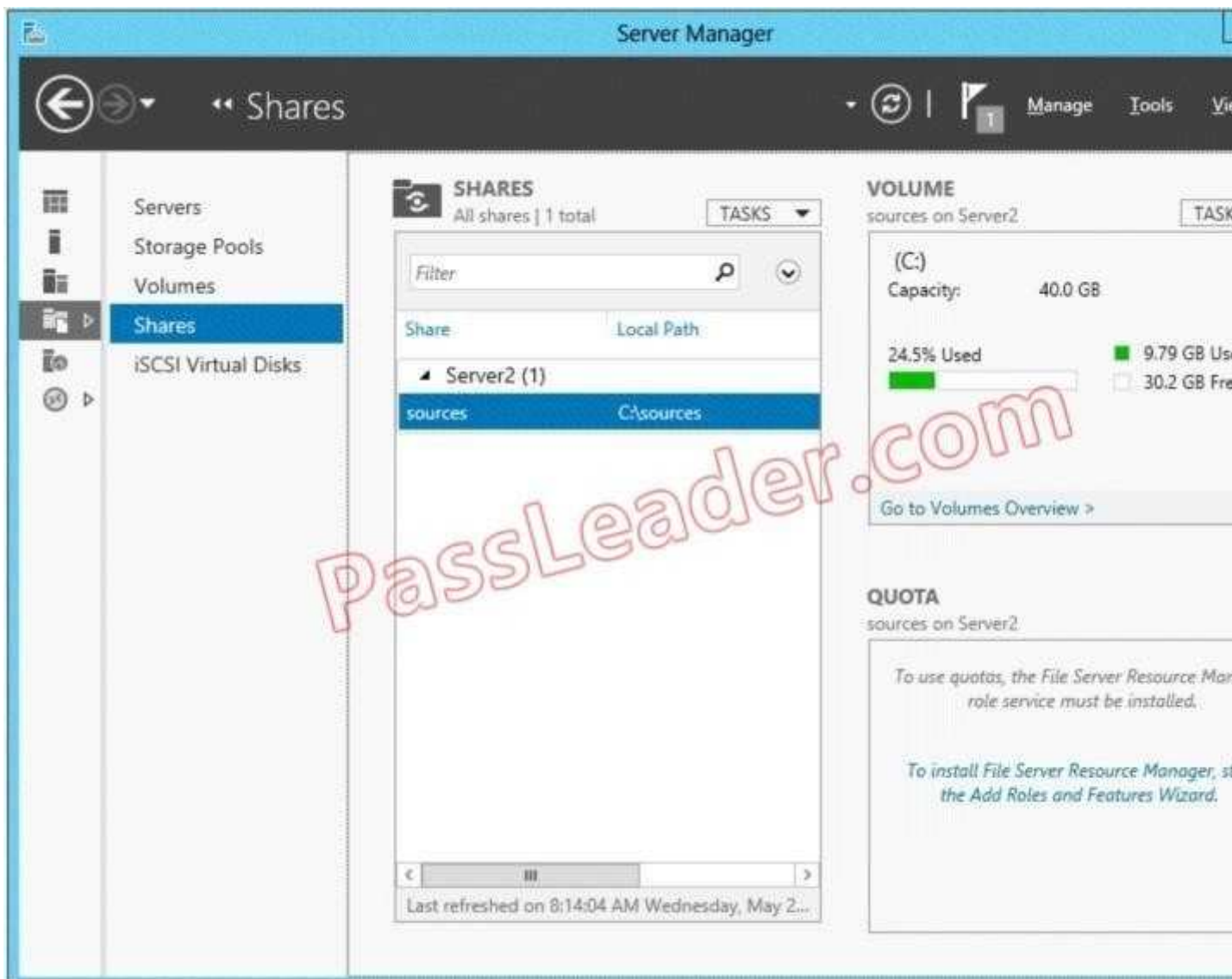
**Explanation**

**QUESTION 61**

You have a server named Server2 that runs Windows Server 2012. You open Server Manager on Server2 as shown in the exhibit. (Click the Exhibit button.) The Everyone group has read share permission and read NTFS permission to Sources.

You need to ensure that when users browse the network, the Sources share is not visible.

What should you do?



- A. From the properties of the Sources folder, remove the Sources share, and then share the Sources folder as Sources\$
- B. From the properties of the Sources folder, deny the List Folder Contents permission for the Everyone group
- C. From the properties of the Sources share, configure access-based enumeration
- D. From the properties of the Sources folder, configure the hidden attribute

**Correct Answer: A**

**Section: (none)**

**Explanation**

**Explanation/Reference:**

Complete collection of 70-410 Exam's Question and answers.  
<http://www.passleader.com/>

#### QUESTION 62

Your network contains a server named Server1 that runs Windows Server 2012. Server1 has the Print and Document Services server role installed. You connect a new print device to the network. The marketing department and the sales department will use the print device. You need to provide users from both departments with the ability to print to the network print device. The solution must ensure that if there are multiple documents queued to print, the documents from the sales users print before the documents from the marketing users.

What should you do on Server1?



- A. Add two printers. Modify the priorities of each printer and the security settings of each printer
- B. Add two printers and configure printer pooling
- C. Add one printer and configure printer pooling.
- D. Add one printer. Modify the printer priority and the security settings

**Correct Answer:** A

**Section:** (none)

**Explanation**

#### QUESTION 63

Your network contains an Active Directory domain named contoso.com. The network contains a server named Server1 that runs Windows Server 2012 and a server named Server2 that runs Windows Server 2008 R2 Service Pack 1 (SP1). Server1 and Server2 are member server. You need to ensure that you can manage Server2 from Server1 by using Server Manager. Which two tasks should you perform? (Each correct answer presents part of the solution. Choose two.)

- A. Install Remote Server Administration Tools on Server1.
- B. Install Windows Management Framework 3.0 on Server2.
- C. Install the Windows PowerShell 2.0 engine on Server1.
- D. Install Microsoft .NET Framework 4 on Server2.
- E. Install Remote Server Administration Tools on Server2

**Correct Answer:** BD

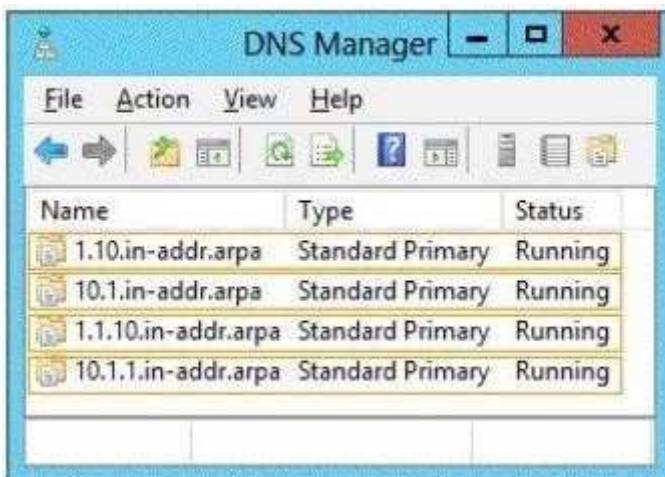
**Section:** (none)

**Explanation**

#### QUESTION 64

You have a DNS server named Server1. Server1 runs Windows Server 2012. The network ID is 10.1.1.0/24. An administrator creates several reverse lookup zones. You need to identify which reverse lookup zone is configured correctly. Which zone should you identify? To answer, select the appropriate zone in the answer area.

Complete collection of 70-410 Exam's Question and answers.  
<http://www.passleader.com/>



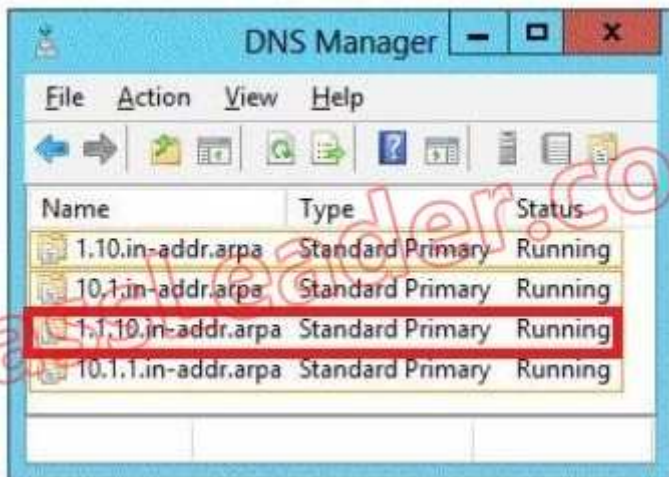
- A.
- B.
- C.
- D.

**Correct Answer:**

**Section:** (none)

## Explanation

### Explanation/Reference:



### QUESTION 65

You have a server named Server1. Server1 runs Windows Server 2012. Server1 has two network adapters. Each network adapter must be configured as shown in the following table.

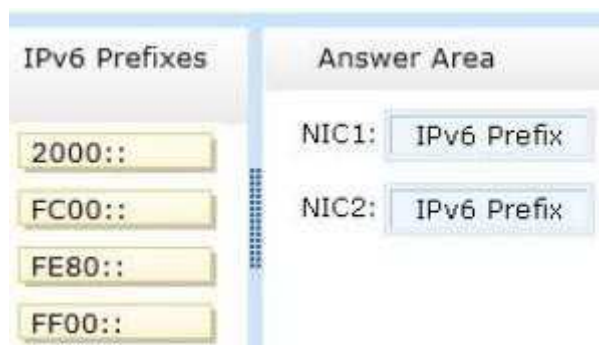
Network adapter name	Required IPv6 address type
NIC1	Private Routable
NIC2	Multicast

You need to configure the correct IPv6 address prefix for each network adapter. Which prefix should you select for each network adapter?

To answer, drag the appropriate IPv6 prefix to the correct network adapter in the answer area. Each prefix may be used once, more than once, or not at all. You may need to drag the split bar between panes or scroll to view content.

Complete collection of 70-410 Exam's Question and answers.

<http://www.passleader.com/>



- A.
- B.
- C.
- D.

**Correct Answer:**

**Section: (none)**

**Explanation**

**Explanation/Reference:**

IPv6 Prefixes

2000::  
FC00::  
FE80::  
FF00::

Answer Area

NIC1: IPv6 Prefix  
NIC2: IPv6 Prefix

#### QUESTION 66

Your company has a main office that contains 225 client computers. The client computers are located on a subnet that uses the network ID of 10.10.1.0/24. The company plans to open two branch offices. The offices will be configured as shown in the following table.

Office name	Number of client computers
Branch1	100
Branch2	50

You need to select a network prefix for each office to ensure that there are enough IPv4 addresses for each client computer. The solution must minimize the number of unused IP addresses. Which network prefixes should you select?

To answer, drag the appropriate network prefix to the correct branch office in the answer area.

Network Prefixes

/24  
/25  
/26  
/27  
/28

Answer Area

Branch1  
Branch2

Network prefix  
Network prefix

- A.
- B.
- C.
- D.

**Correct Answer:**

**Section: (none)**

**Explanation**

**Explanation/Reference:**

Complete collection of 70-410 Exam's Question and answers.

<http://www.passleader.com/>

Branch1

/25

prefix

Branch2

/26

prefix

#### QUESTION 67

Your infrastructure divided in 2 sites. You have a forest root domain and child domain. There is only one DC on site 2 with no FSMO roles. The link goes down to site 2 and no users can log on. What FSMO roles you need on to restore the access?

- A. Infrastructure master
- B. RID master
- C. Domain Naming master
- D. PCD emulator

**Correct Answer:** D

**Section:** (none)

**Explanation**

#### QUESTION 68

You perform a Server Core Installation of window Server 2012 on server named Server1. You need to add a graphical user interface (GUI) to server1. Which tool should you use?

- A. the Add-WindowsFeature cmdlet
- B. the Install-Module cmdlet
- C. the setup.exe command
- D. the Add-WindowsPackage cmdlet

**Correct Answer:** A

**Section:** (none)

**Explanation**

#### QUESTION 69

A network technician installs Windows Server 2012 Standard on a server named Server1. A corporate policy states that all servers must run Windows Server 2012 Enterprise. You need to ensure that Server1 complies with the corporate policy. You want to achieve this goal by using the minimum amount of administrative effort.

What should you perform?

- A. a clean installation of Windows Server 2012
- B. an upgrade installation of Windows Server 2012
- C. online servicing by using Dism
- D. offline servicing by using Dism

**Correct Answer:** C

**Section:** (none)

**Explanation**

#### QUESTION 70

You have a domain controller named Server1 that runs Windows Server 2012 and has the DNS Server server role installed. Server1 hosts a DNS zone named contoso.com and a GlobalNames zone. You discover that the root hints were removed from Server1. You need to view the default root hints of Server1. What should you do?

Complete collection of 70-410 Exam's Question and answers.

<http://www.passleader.com/>

- A. From Event Viewer, open the DNS Manager log.
- B. From Notepad, open the Cache.dns file.
- C. From Windows Powershell, run Get-DNSServerDiagnostics.
- D. From nslookup, run root server1.contoso.com

**Correct Answer:** B

**Section:** (none)

**Explanation**

#### QUESTION 71

Your company has a main office and two branch offices. The offices connect to each other by using a WAN link. In the main office, you have a server named Server1 that runs Windows Server 2012. Server1 is configured to use an IPv4 address only. You need to assign an IPv6 address to Server1. The IP address must be private and routable. Which IPv6 address should you assign to Server1?

- A. fe80:ab32:145c::32cc:401b
- B. ff00:3fff:65df:145c:dca8::82a4
- C. 2001:ab32:145c::32cc:401b
- D. fd00:ab32:14:ad88:ac:58:abc2:4

**Correct Answer:** D

**Section:** (none)

**Explanation**

#### QUESTION 72

Your network contains an Active Directory domain named contoso.com. All client computers run Windows 8.

You deploy a server named Server1 that runs Windows Server 2012. You install a new client-server application named App1 on Server1 and on the client computers. The client computers must use TCP port 6444 to connect to App1 on Server1. Server1 publishes the information of App1 to an intranet server named Server2 by using TCP port 3080. You need to ensure that all of the client computers can connect to App1. The solution must ensure that the application can connect to Server2.

Which Windows Firewall rule should you create on Server1?

- A. an inbound rule to allow a connection to TCP port 3080
- B. an outbound rule to allow a connection to TCP port 3080
- C. an outbound rule to allow a connection to TCP port 6444
- D. an inbound rule to allow a connection to TCP port 6444

**Correct Answer:** D

**Section:** (none)

**Explanation**

#### QUESTION 73

Your network contains an Active Directory domain named contoso.com. All servers run Windows Server 2012.

The domain contains a server named Server1.

You install the Windows PowerShell Web Access gateway on Server1. You need to provide administrators with the ability to manage the servers in the domain by using the Windows PowerShell Web Access gateway.

Which two cmdlets should you run on Server1? (Each correct answer presents part of the solution. Choose two.)

- A. Set-WSManQuickConfig
- Complete collection of 70-410 Exam's Question and answers.  
<http://www.passleader.com/>



- B. Set-WSManInstance
- C. Add-PswaAuthorizationRule
- D. Set-BCAuthentication
- E. Install-PswaWebApplication

**Correct Answer:** CE

**Section:** (none)

**Explanation**

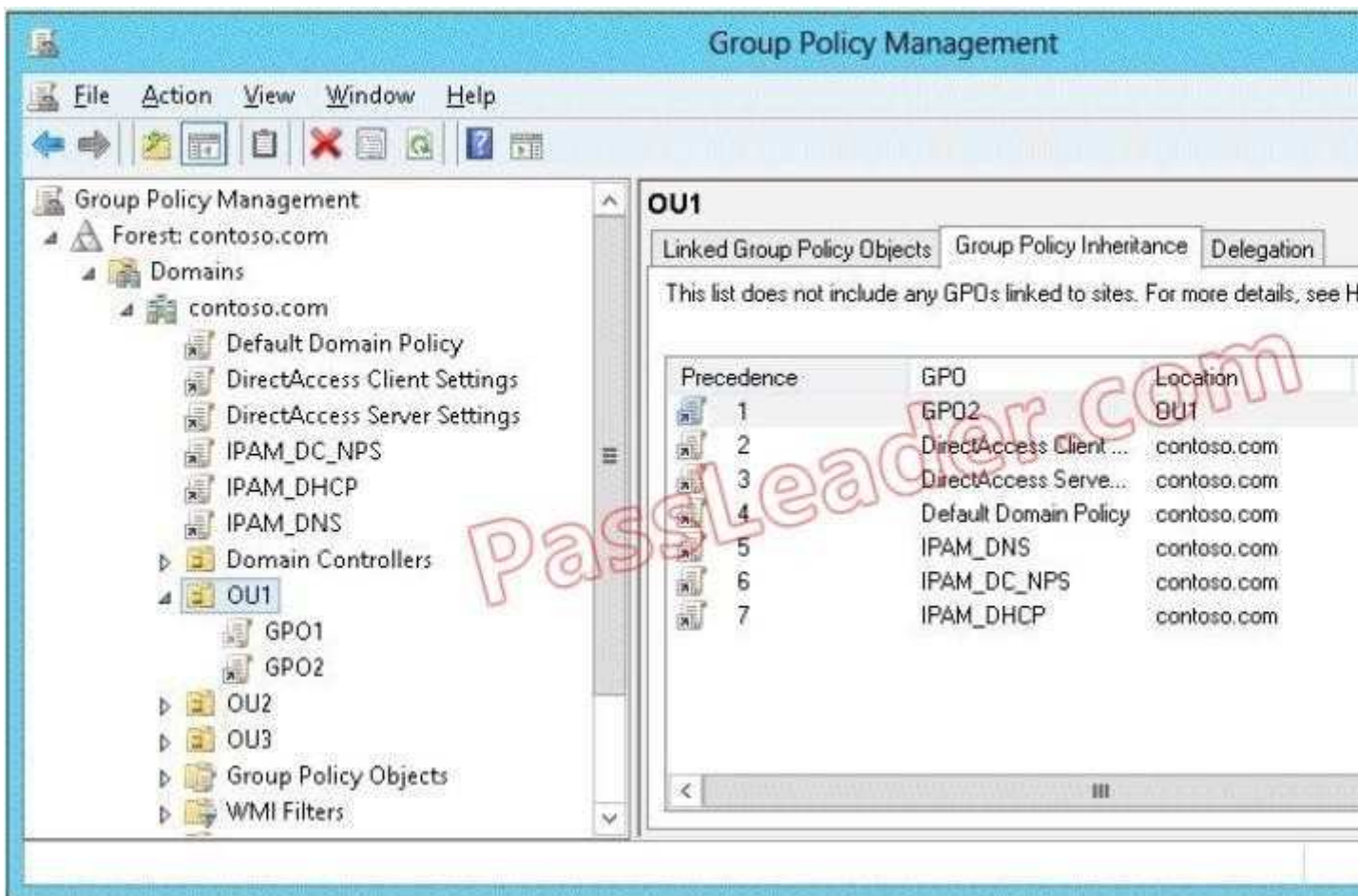
#### QUESTION 74

Your network contains an Active Directory domain named contoso.com. All user accounts in the sales department reside in an organizational unit (OU) named OU1. You have a Group Policy object (GPO) named GPO1. GPO1 is used to deploy a logon script to all of the users in the sales department.

You discover that the logon script does not run when the sales users log on to their computers.

You open Group Policy Management as shown in the exhibit.

You need to ensure that the logon script in GPO1 is applied to the sales users. What should you do?



- A. Enforce GPO1.
- B. Modify the link order of GPO1.
- C. Modify the Delegation settings of GPO1.
- D. Enable the link of GPO1.

**Correct Answer:** D

**Section:** (none)

**Explanation**

#### QUESTION 75

You have a server named Server 1 that runs Windows Server 2012. Server 1 has the Hyper-V server role installed.

You have fixed-size VHD named Files.vhd.

You need to make the contents in Files.vhd available to several virtual machines. The solution must meet the following requirements:

\*Ensure that if the contents are changed on any virtual machine, the changes are not reflected Complete collection of 70-410 Exam's Question and answers.

<http://www.passleader.com/>

on the other virtual machines.

\*Minimize the amount of disk space used.

What should you do?

- A. Create a fixed-size VHDX. Transfer the information from Files.vhd to the new VHDX file.
- B. Convert Files.vhd to a dynamically expanding VHD?
- C. Create a dynamically expanding VHDX. Transfer the information from Files.vhd to the new VHDX file.
- D. Create differencing VHDs that use Files.vhd as the parent disk.

**Correct Answer: D**

**Section: (none)**

**Explanation**

#### QUESTION 76

Your network contains an Active Directory domain named adatum.com. The domain contains several thousand member servers that run Windows Server 2012. All of the computer accounts for the member servers are in an organizational unit (OU) named ServersAccounts. Servers are restarted only occasionally. You need to identify which servers were restarted during the last two days.

What should you do?

- A. Run dsquery computer and specify the -stalepwd parameter
- B. Run dsquery server and specify the -o parameter.
- C. Run Get-ADComputer and specify the lastlogon property.
- D. Run Get-ADComputer and specify the SearchScope parameter

**Correct Answer: C**

**Section: (none)**

**Explanation**

#### QUESTION 77

Your network contains three servers that run Windows Server 2012. The servers are configured as shown in the following table (click Exhibit). Server3 is configured to obtain an IP address automatically.

You need to ensure that Server3 only receives an IP address from Server1. The IP address must always be the same.

Which two tasks should you perform? (Each correct answer presents part of the solution. Choose two.)

Server name	Server role
Server1	Active Directory Domain Services DHCP Server DNS Server
Server2	Remote Access DHCP Server
Server3	File and Storage Services

- A. Create an exclusion on Server1.

- B. Create a filter on Server1.
  - C. Create a reservation on Server2
  - D. Create a reservation on Server1
- Complete collection of 70-410 Exam's Question and answers.  
<http://www.passleader.com/>
- E. Create a filter on Server2.

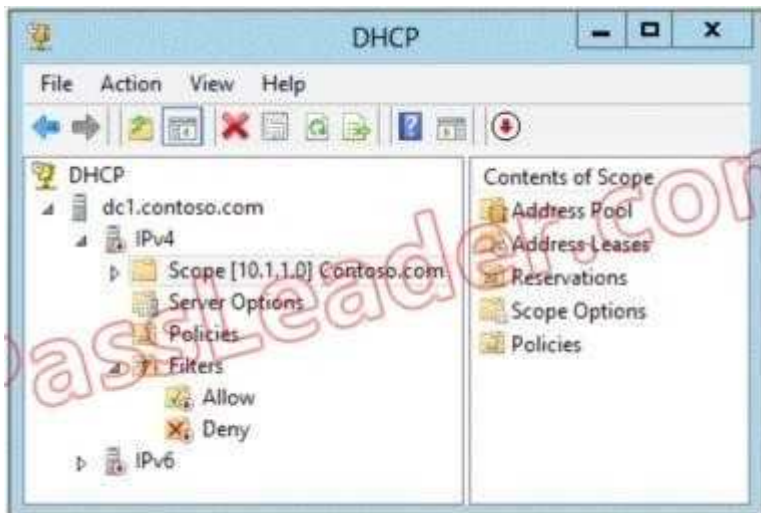
**Correct Answer:** DE

**Section:** (none)

**Explanation**

#### QUESTION 78

Your network contains an Active Directory domain named contoso.com. The domain contains a domain controller named DC1 that runs Windows Server 2012 and a client computer named Computer1 that runs Windows 8. DC1 is configured as a DHCP server as shown in the exhibit. (Click the Exhibit button.) Computer1 is configured to obtain an IP address automatically. You need to ensure that Computer1 can receive an IP address from DC1. What should you do?



- A. Disable the Allow filters.
- B. Disable the Deny filters
- C. Activate Scope [10.1.1.0] Contoso.com.
- D. Authorize dc1.contoso.com.

**Correct Answer:** D

**Section:** (none)

**Explanation**

#### QUESTION 79

Your network contains an Active Directory domain named contoso.com. The domain contains a domain controller named Server1 that has the DNS Server server role installed. Server1 hosts a primary zone for contoso.com. The domain contains a member server named Server2 that is configured to use Server1 as its primary DNS server. From Server2, you run nslookup.exe as shown in the exhibit. (Click the Exhibit button.)

You need to ensure that when you run Nslookup, the correct name of the default server is displayed.

What should you do?

Complete collection of 70-410 Exam's Question and answers.

<http://www.passleader.com/>



```
Administrator: Windows PowerShell
Windows PowerShell
Copyright (C) 2011 Microsoft Corporation. All rights reserved.

PS C:\Users\Administrator> nslookup
DNS request timed out.
    timeout was 2 seconds.
Default Server:  Unknown
Address:  10.0.0.11

> -
```

- A. From Advanced TCP/IP Settings on Server1, add contoso.com to the DNS suffix list
- B. On Server1, modify the Security settings of the contoso.com zone
- C. On Server1, create a reverse lookup zone.
- D. From Advanced TCP/IP Settings on Server2, add contoso.com to the DNS suffix list

**Correct Answer: C**

**Section: (none)**

**Explanation**

#### QUESTION 80

Your network contains an Active Directory domain named contoso.com. The domain contains a domain controller named DC1 that hosts the primary DNS zone for contoso.com. All client computers are configured to use DC1 as the primary DNS server. You need to configure DC1 to resolve any DNS requests that are not for the contoso.com zone by querying the DNS server of your Internet Service Provider (ISP). What should you configure?

- A. Name server (NS) records
- B. Condition& forwarders
- C. Forwarders
- D. Naming Authority Pointer (NAPTR) DNS resource records (RR)

**Correct Answer: C**

**Section: (none)**

**Explanation**

#### QUESTION 81

Your network contains an Active Directory domain named contoso.com. All domain controllers run Windows Server 2012. The domain contains a server named Server1 that runs Windows Server 2012. You need to ensure that when users log on to Server1, their user account is added automatically to a local group named Group1 during the log on process. Which Group Policy settings should you modify?

- A. Restricted Groups
- B. Security Options
- C. User Rights Assignment
- D. Preferences

Complete collection of 70-410 Exam's Question and answers.  
<http://www.passleader.com/>

**Correct Answer: D**

**Section: (none)**

## Explanation

### QUESTION 82

Your network contains an Active Directory domain named contoso.com. You need to prevent users from installing a Windows Store app named App1. What should you create?

- A. An application control policy executable rule
- B. An application control policy packaged app rule
- C. A software restriction policy certificate rule
- D. An application control policy Windows Installer rule

**Correct Answer: B**

**Section: (none)**

## Explanation

### QUESTION 83

Your network contains an Active Directory domain named contoso.com. The domain contains 500 servers that run Windows Server 2012. You have a written security policy that states the following:

- ☐ Only required ports must be open on the servers.
- ☐ All of the servers must have Windows Firewall enabled.
- ☐ Client computers used by Administrators must be allowed to access all of the ports on all of the servers.
- ☐ Client computers used by the Administrators must be authenticated before the client computers can access the servers.

You have a client computer named Computer1 that runs Windows 8. You need to ensure that you can use Computer1 to access all of the ports on all of the servers successfully. The solution must adhere to the security policy.

Which three actions should you perform? (Each correct answer presents part of the solution. Choose three.)

- A. On Computer1, create a connection security rule
- B. On all of the servers, create an outbound rule and select the Allow the connection if it is secure option.
- C. On all of the servers, create an inbound rule and select the Allow the connection if it is secure option.
- D. On Computer1, create an inbound rule and select the Allow the connection if it is secure option.
- E. On Computer1, create an outbound rule and select the Allow the connection if it is secure option
- F. On all of the servers, create a connection security rule

**Correct Answer: ACF**

**Section: (none)**

## Explanation

### QUESTION 84

Your company's security policy states that all of the servers deployed to a branch office must not have the graphical user interface (GUI) installed. In a branch office, a support technician installs a server with a GUI installation of Windows Server 2012 on a new server, and then configures the server as a DHCP server. You need to ensure that the new server meets the security policy. You want to achieve this goal by using the minimum amount of Administrative effort.

What should you do?

Complete collection of 70-410 Exam's Question and answers.

<http://www.passleader.com/>

- A. Reinstall Windows Server 2012 on the server.
- B. From Windows PowerShell, run `Uninstall-WindowsFeature Desktop-Experience`.
- C. From Windows PowerShell, run `Uninstall-WindowsFeature PowerShell-ISE`.
- D. From Server Manager, uninstall the User Interfaces and Infrastructure feature.



**Correct Answer:** D

**Section:** (none)

**Explanation**

**QUESTION 85**

Your network contains three servers. The servers are configured as shown in the following table.

Server name	CPU type	Operating system	Installation type
Server1	x86	32-bit Windows Server 2008 Service Pack 2 (SP2)	Full
Server2	X86	32-bit Windows Server 2008 Service Pack 2 (SP2)	Server Core
Server3	x64	64-bit Windows Server 2008 R2	Full

Your company plans to standardize all of the servers on Windows Server 2012. You need to recommend an upgrade path for each server. The solution must meet the following requirements:

?Upgrade the existing operating system whenever possible.

?Minimize hardware purchases.

Which upgrade path should you recommend for each server?

To answer, drag the appropriate upgrade path to each server in the answer area. Each upgrade path may be used once, more than once, or not at all.

The screenshot shows a drag-and-drop interface. On the left, there is a list of three upgrade paths: 'Clean installation on new hardware', 'Clean installation on existing hardware', and 'Upgrade on existing hardware'. On the right, there is an 'Answer Area' with three rows corresponding to 'Server1', 'Server2', and 'Server3'. The interface is designed for the user to drag the upgrade paths from the left list to the appropriate server rows on the right.

A.

B.

C.

D.

**Correct Answer:**

**Section:** (none)

**Explanation**

**Explanation/Reference:**

Complete collection of 70-410 Exam's Question and answers.

<http://www.passleader.com/>

Click here to enter text.	Answer Area
Clean installation on new hardware	Server1 Clean installation on new hardware
Clean installation on existing hardware	Server2 Clean installation on new hardware
Upgrade on existing hardware	Server3 Upgrade on existing hardware

#### QUESTION 86

Your network contains a file server named Server1 that runs Windows Server 2012. All client computers run Windows 8. Server1 contains a folder named Folder1. Folder1 contains the installation files for the company's desktop applications. A network technician shares Folder1 as Share 1.

You need to ensure that the share for Folder1 is not visible when users browse the network.

What should you do?

- A. From the properties of Folder1, deny the List Folder Contents permission for the Everyone group.
- B. From the properties of Folder1, remove Share1, and then share Folder1 as Share1\$.
- C. From the properties of Folder1, configure the hidden attribute.
- D. From the properties of Share1, configure access-based enumeration

**Correct Answer: B**

**Section: (none)**

**Explanation**

#### QUESTION 87

Your network contains an Active Directory domain named contoso.com. The domain contains a server named Server1 that runs Windows Server 2012 and a server named Server2 that runs Windows Server 2008 R2 Service Pack 1 (SP1). Both servers are member servers. On Server2, you install all of the software required to ensure that Server2 can be managed remotely from Server Manager.

You need to ensure that you can manage Server2 from Server1 by using Server Manager. Which two tasks should you perform on Server2? (Each correct answer presents part of the solution. Choose two.)

- A. Run the systempropertiesremote.exe command
- B. Run the Enable-PsRemotingcmdlet.
- C. Run the Enable-PsSessionConfigurationcmdlet
- D. Run the Configure-SMRemoting.ps1script
- E. Run the Set-ExecutionPolicycmdlet.

**Correct Answer: DE**

**Section: (none)**

**Explanation**

#### QUESTION 88

Your network contains an Active Directory domain named contoso.com. The domain contains a print server named Server1 that runs Windows Server 2012. You share several printers on Server1. You need to ensure that you can view the printer objects associated to Server1 in Active Directory Users and Computers.

Which option should you select? To answer, select the appropriate option in the answer area. Complete collection of 70-410 Exam's Question and answers.

<http://www.passleader.com/>



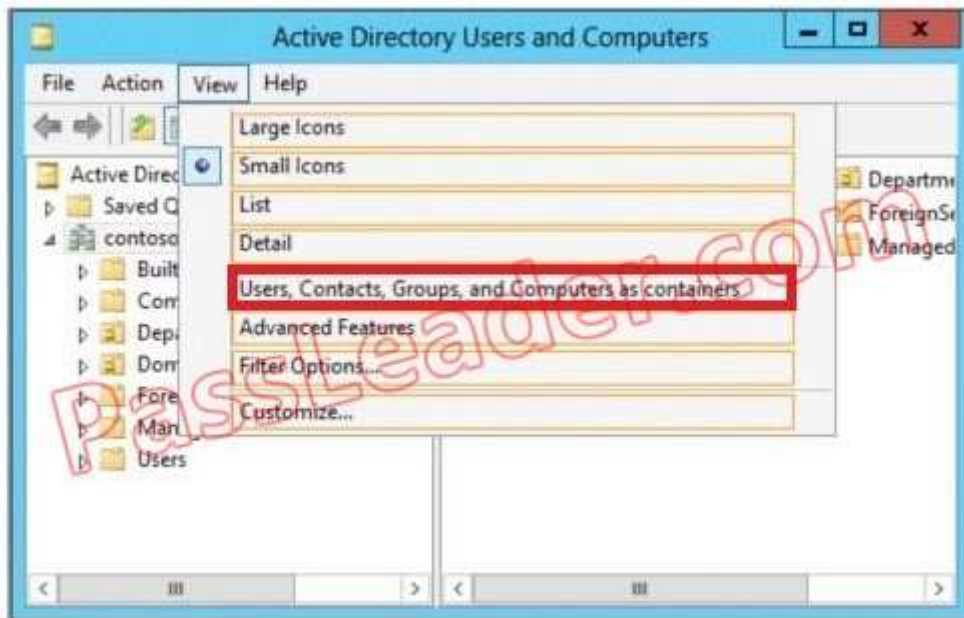
- A.
- B.
- C.
- D.

**Correct Answer:**

**Section: (none)**

**Explanation**

**Explanation/Reference:**



#### QUESTION 89

Your network contains an Active Directory domain named contoso.com. The domain contains two member servers named Server1 and Server2 that run Windows Server 2012. You log on to Server1. You need to retrieve the IP configurations of Server2. Which command should you run from Server1?

- A. winrs -r:server2 ipconfig
- B. winrm get server2
- C. dsquery \*-scope base-attr ip, server2

Complete collection of 70-410 Exam's Question and answers.  
<http://www.passleader.com/>

D. ipconfig > server2.ip

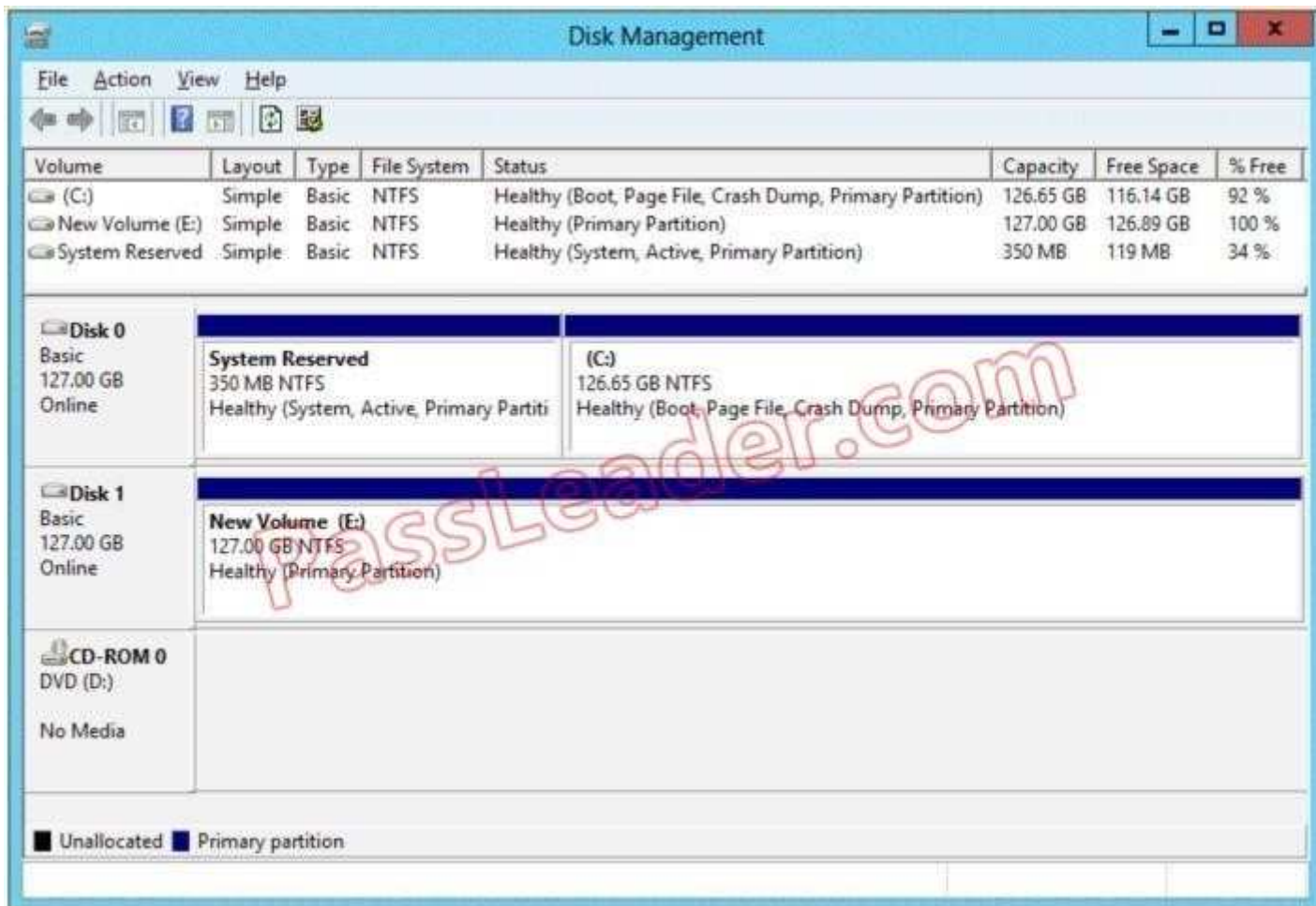
**Correct Answer:** A

**Section:** (none)

**Explanation**

#### QUESTION 90

You have a server named Server1 that runs Windows Server 2012. Server1 has the Hyper-V server role installed. The disks on Server1 are configured as shown in the exhibit. (Click the Exhibit button.) You create a virtual machine on Server1. You need to ensure that you can configure a pass-through disk for the virtual machine. What should you do?



- A. Delete partition E.
- B. Convert Disk 1 to a GPT disk
- C. Convert Disk 1 to a dynamic disk.
- D. Take Disk 1 offline.

**Correct Answer:** D

**Section:** (none)

**Explanation**

#### QUESTION 91

You have a server named Server1 that runs Windows Server 2012. Server1 has the Hyper-V server role installed.

You have fixed-size VHD named Files.vhd.

You need to make the contents in Files.vhd available to several virtual machines. The solution must meet the following requirements:

?Ensure that if the contents are changed on any virtual machine, the changes are not reflected on the other virtual machines.

Complete collection of 70-410 Exam's Question and answers.

<http://www.passleader.com/>

?Minimize the amount of disk space used.

What should you do?

- A. Create a dynamically expanding VHDX. Transfer the information from Files.vhd to the new VHDX file
- B. Create a fixed-size VHDX. Transfer the information from Files.vhd to the new VHDX file.
- C. Convert Files.vhd to a dynamically expanding VHD.
- D. Create differencing VHD5 that use Files.vhd as the parent disk

**Correct Answer: D**

**Section: (none)**

**Explanation**

#### QUESTION 92

Your network contains an Active Directory domain named contoso.com. The domain contains two servers named Server2 runs Windows Server 2012. You create a security template named Template 1 by using the Security Templates snap-in. You need to apply template 1 to Server 2.

Which tool should you use?

- A. Security Templates.
- B. Computer Management.
- C. Security Configuration and Analysis.
- D. System Configuration.

**Correct Answer: C**

**Section: (none)**

**Explanation**

#### QUESTION 93

Your network contains an active directory domain named contoso.com. The domain contains a domain controller named DCS. DCS has a server core installation of windows server 2012. You need to uninstall Active Directory from DCS manually. Which tool should you use?

- A. The Remove-WindowsFeature cmdlet
- B. the dsain.exe command
- C. the ntdsutil.exe command
- D. the Remove-ADComputer cmdlet

**Correct Answer: C**

**Section: (none)**

**Explanation**

#### QUESTION 94

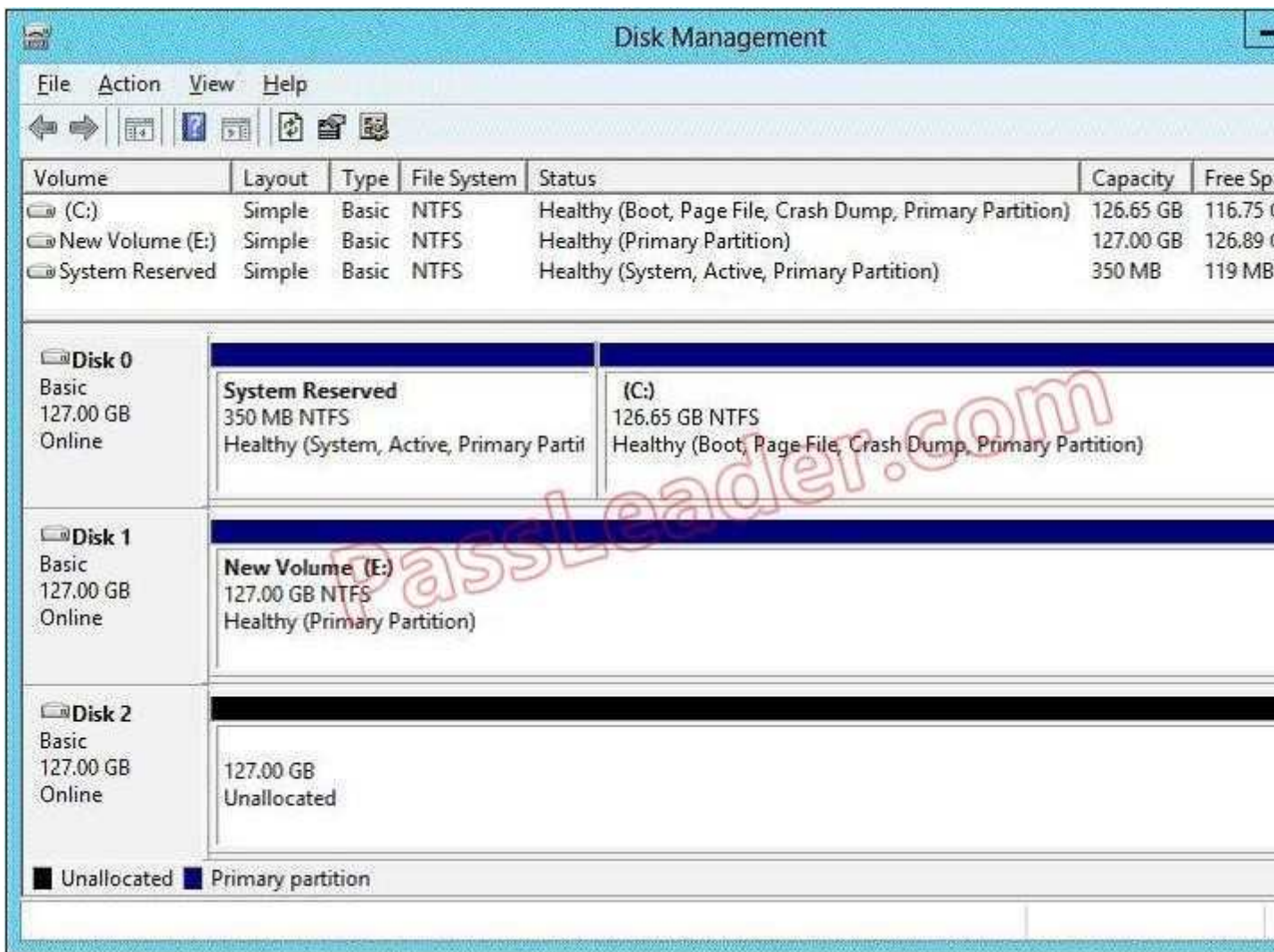
You have a server named Server 2 that runs Windows Server 2012. Server 2 has the Hyper-V server role installed.

The disks on Server2 are configured as shown in the exhibit. (Click the Exhibit button). You create a virtual machine on Server2 named VM1. You need to ensure that you can configure a pass-through disk for VM1. What should you do?

Complete collection of 70-410 Exam's Question and answers.

<http://www.passleader.com/>





- A. Convert Disk 1 to a MBR disk.
- B. Convert Disk 1 to a basic disk.
- C. Take Disk 1 offline.
- D. Create a partition on Disk 1.

**Correct Answer: C**

**Section: (none)**

**Explanation**

#### QUESTION 95

You have a file server named Server1 that runs Windows Server 2012. Server1 has following hardware configurations:

- \*16 GB of RAM
- \*A single quad-core CPU
- \*Three network teams that have two network adapters each

You add additional CPUs and RAM to Server 1.

You repurpose Server1 as a virtualization host. You install the Hyper-V server role on Server1. You need to create four external virtual switches in Hyper-V. Which cmdlet should you run first?

- A. Set-NetAdapter.
- B. Add-Net1.bfoTeamNic
- C. Add-VMNetworkAdapter



D. Remove-NetLbfoTeam

**Correct Answer:** D

**Section:** (none)

**Explanation**

**Explanation/Reference:**

Complete collection of 70-410 Exam's Question and answers.

<http://www.passleader.com/>

#### QUESTION 96

Your network contains an Active Directory domain named contoso.com. The domain contains two servers that run Windows Server 2012. You create a security template named template 1 by using the Security Templates snap-in. You need to apply Template 1 to Server2. Which tool should you use? Your network contain an active directory domain named Contoso.com. The domain contains two servers named server1 and server2 that run windows server 2012. You create a security template named template1 by using the security template snap-in. You need to apply template1 to server2. Which tool should you use?

- A. System Configuration
- B. Local Security Policy
- C. Server Manager
- D. Certificate Templates

**Correct Answer:** C

**Section:** (none)

**Explanation**

#### QUESTION 97

Your network contains an Active Directory domain named contoso.com. The domain contains a server named Server 2012. You create a group Managed Service Account named gservice1. You need to configure a service named Service1 to run as the gservice1 account. How should you configure Service1?

- A. From a command prompt, run sc.exe and specify the config parameter.
- B. From Windows PowerShell, run Set-Service and specify the -PassThrough parameter
- C. From Windows PowerShell, run Set-Service and specify the -StartupType parameter
- D. From Services Console configure the General settings

**Correct Answer:** A

**Section:** (none)

**Explanation**

#### QUESTION 98

Your network contains an Active Directory domain named adatum.com. The domain contains a member server named Server1 and a domain controller named DC2. All servers run Windows Server 2012. On DC2, you open Server Manager and you add Server1 as another server to manage. From Server Manager on DC2, you right-click Server1 as shown in the exhibit. You need to ensure that when you right-click Server1, you see the option to run the DHCP console. What should you do?

- A. On Server1, install the Feature Administration Tools.
- B. In the domain, add DC1 to the DHCP Administrators group.
- C. On DC2 and Server1, run winrm quickconfig.
- D. On DC2, install the Role Administration Tools.

**Correct Answer:** C

**Section:** (none)

**Explanation**

**QUESTION 99**

Your network contains an Active Directory domain named contoso.com. An organizational unit (OU) named OU1 contains user accounts and computer accounts. A Group Policy object (GPO) named GP1 is linked to the domain. GP1 contains Computer Configuration settings and User Configuration settings.

You need to prevent the User Configuration settings in GP1 from being applied to users. The solution must ensure that the Computer Configuration settings in GP1 are applied to all client Complete collection of 70-410 Exam's Question and answers.

<http://www.passleader.com/>

computers. What should you configure?

- A. the Group Policy loopback processing mode
- B. the Block Inheritance feature
- C. the Enforced setting
- D. the GPO Status

**Correct Answer: A**

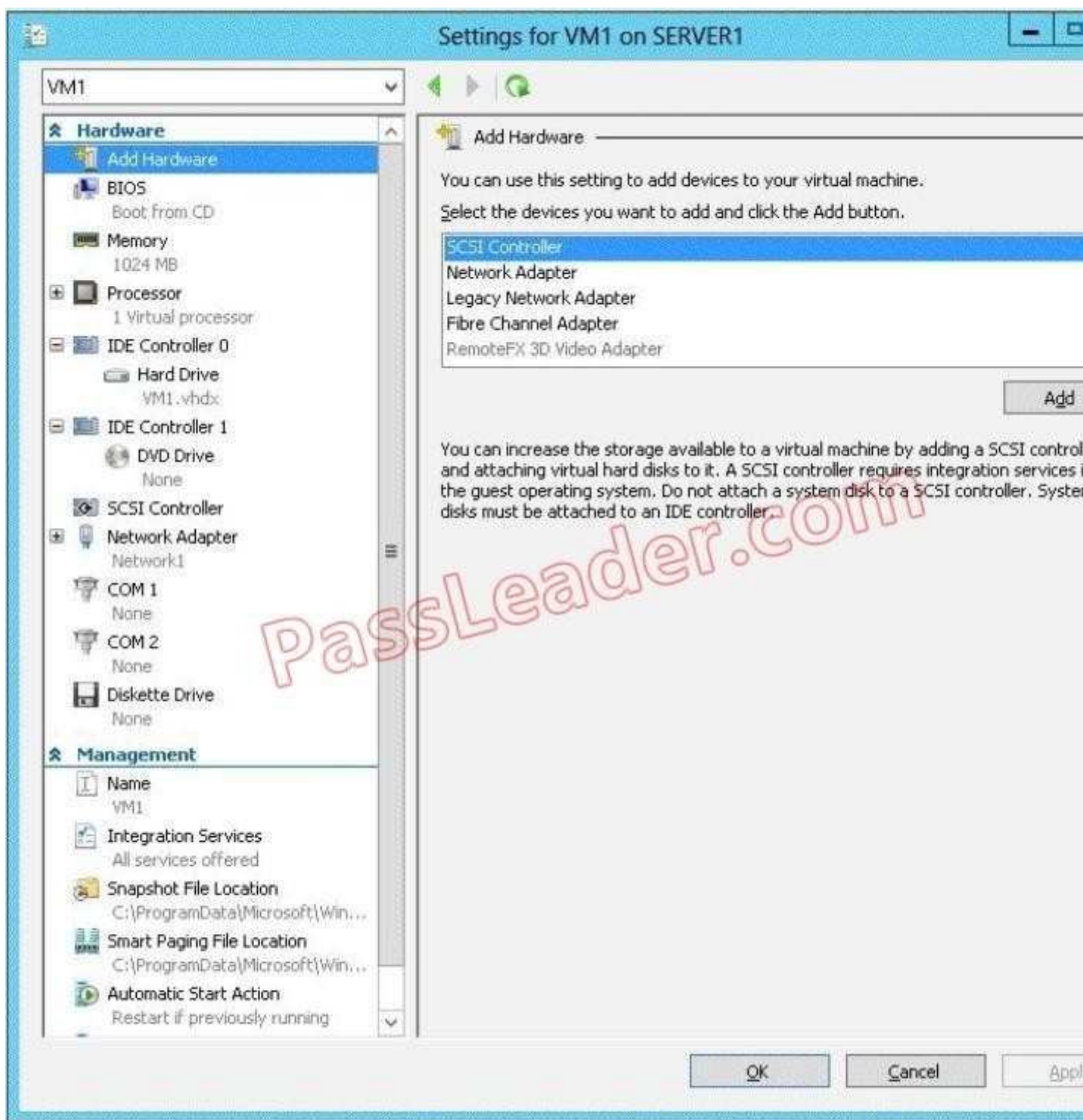
**Section: (none)**

**Explanation**

**QUESTION 100**

Your network contains an Active Directory domain named contoso.com. The domain contains a server named Server1. Server1 runs Windows Server 2012 and has the Hyper-V server role installed.

On Server1, you create a virtual machine named VM1. When you try to add a RemoteFX 3D Video Adapter to VM1, you discover that the option is unavailable as shown in the following exhibit.



Complete collection of 70-410 Exam's Question and answers.

<http://www.passleader.com/>

You need to add the RemoteFX 3D Video Adapter to VM1.

What should you do first?

- A. On Server1, run the Enable-VMRemoteFxPhysicalVideoAdapter cmdlet.
- B. On Server1, install the Media Foundation feature.
- C. On Server1, run the Add-VMRemoteFx3dVideoAdapter cmdlet.
- D. On Server1, install the Remote Desktop Virtualization Host (RD Virtualization Host) role service.

**Correct Answer: D**

**Section: (none)**

## Explanation

### QUESTION 101

Your network contains two Hyper-V hosts named Host1 and Host2. Host1 contains a virtual machine named VM1. Host2 contains a virtual machine named VM2. VM1 and VM2 run Windows Server 2012. You install the Network Load Balancing feature on VM1 and VM2. You need to ensure that the virtual machines are configured to support Network Load Balancing (NLB). Which virtual machine settings should you configure on VM1 and VM2?

- A. Router guard
- B. DHCP guard
- C. Port mirroring
- D. MAC address

**Correct Answer: D**

**Section: (none)**

**Explanation**

### QUESTION 102

Your network contains a Windows Server 2012 image named Server12.wim. Server12.wim contains the images shown in the following table.

Index number	Image name
1	Windows Server 2012 Server Standard Core
2	Windows Server 2012 Server Standard
3	Windows Server 2012 Server Datacenter Core
4	Windows Server 2012 Server Datacenter

Server12.wim is located in C:\.

You need to enable the Windows Server Migration Tools feature in the Windows Server 2012 Server Datacenter image. You want to achieve this goal by using the minimum amount of Administrative effort. Which command should you run first?

- A. `dism.exe /mount-wim /wimfile:c:\Server12.wim /index:4 /mountdir:c:\mount`
- B. `imagex.exe /capture c: c:\Server12.wim "windows server 2012server datacenter"`
- C. `dism.exe /image: c:\Server12.wim /enable-feature /featurename: servermigration`
- D. `imagex.exe /apply c:\Server12.wim 4 c:\`

**Correct Answer: A**

**Section: (none)**

**Explanation**

### QUESTION 103

Complete collection of 70-410 Exam's Question and answers.

<http://www.passleader.com/>

Your network contains an Active Directory domain named contoso.com. The network contains a domain controller named DC1 that has the DNS Server server role installed. DC1 has a standard primary DNS zone for contoso.com.

You need to ensure that only client computers in the contoso.com domain will be able to add their records to the contoso.com zone.

What should you do first?

- A. Modify the Security settings of Dc1
- B. Modify the Security settings of the contoso.com zone.
- C. Store the contoso.com zone in Active Directory

D. Sign the contoso.com zone.

**Correct Answer:** C

**Section:** (none)

**Explanation**

#### QUESTION 104

Your network contains a server named Server1 that runs Windows Server 2012. Server1 has the Hyper-V server role installed. Server1 hosts four virtual machines named VM1, VM2, VM3, and VM4. Server1 is configured as shown in the following table.

Hardware component	Configuration
Processor	Eight quad-core CPUs that have non-uniform memory access (NUMA)
Memory	32 GB of RAM
Disk	Two local 4-TB disks
Network	Eight network adapters VMQ-supported PCI-SIG-supported

You install a network monitoring application on VM2.  
You need to ensure that all of the traffic sent to VM3 can be captured on VM2.  
What should you configure?

- A. NUMA topology
- B. Resource control
- C. resource metering
- D. virtual Machine Chimney
- E. the VLAN ID
- F. Processor Compatibility
- G. the startup order
- H. Automatic Start Action
- I. Integration Services
- J. Port mirroring
- K. Single-root I/O virtualization

**Correct Answer:** J

**Section:** (none)

**Explanation**

#### QUESTION 105

Complete collection of 70-410 Exam's Question and answers.

<http://www.passleader.com/>

Your network contains a server named Server1 that runs Windows Server 2012. Server1 has the Hyper-V server role installed. Server1 hosts four virtual machines named VM1, VM2, VM3, and VM4. Server1 is configured as shown in the following table.

Hardware component	Configuration
Processor	Eight quad-core CPUs that have non-uniform memory access (NUMA)
Memory	32 GB of RAM
Disk	Two local 4-TB disks
Network	Eight network adapters VMQ-supported PCI-SIG-supported

You plan to schedule a complete backup of Server1 by using Windows Server Backup. You need to ensure that the state of VM1 is saved before the backup starts. What should you configure?

- A. NUMA topology
- B. Resource control
- C. resource metering
- D. virtual Machine Chimney
- E. the VLAN ID
- F. Processor Compatibility
- G. the startup order
- H. Automatic Start Action
- I. Integration Services
- J. Port mirroring
- K. Single-root I/O virtualization

**Correct Answer: I**

**Section: (none)**

**Explanation**

#### QUESTION 106

Your network contains a server named Server1 that runs Windows Server 2012. Server1 has the Hyper-V server role installed. Server1 hosts four virtual machines named VM1, VM2, VM3, and VM4. Server1 is configured as shown in the following table.

Hardware component	Configuration
Processor	Eight quad-core CPUs that have non-uniform memory access (NUMA)
Memory	32 GB of RAM
Disk	Two local 4-TB disks
Network	Eight network adapters VMQ-supported PCI-SIG-supported

Complete collection of 70-410 Exam's Question and answers.

<http://www.passleader.com/>

VM3 is used to test applications. You need to prevent VM3 from synchronizing its clock to Server1. What should you configure?

- A. NUMA topology
- B. Resource control



- C. resource metering
- D. virtual Machine Chimney
- E. the VLAN ID
- F. Processor Compatibility
- G. the startup order
- H. Automatic Start Action
- I. Integration Services
- J. Port mirroring
- K. Single-root I/O virtualization

**Correct Answer: I**

**Section: (none)**

**Explanation**

#### QUESTION 107

Your network contains a server named Server1 that runs Windows Server 2012. Server1 has the Hyper-V server role installed. Server1 hosts four virtual machines named VM1, VM2, VM3, and VM4. Server1 is configured as shown in the following table.

Hardware component	Configuration
Processor	Eight quad-core CPUs that have non-uniform memory access (NUMA)
Memory	32 GB of RAM
Disk	Two local 4-TB disks
Network	Eight network adapters VMQ-supported PCI-SIG-supported

You need to configure VM4 to track the CPU, memory, and network usage. What should you configure?

- A. NUMA topology
- B. Resource control
- C. resource metering
- D. Virtual Machine Chimney
- E. the VLAN ID
- F. Processor Compatibility
- G. the startup order
- H. Automatic Start Action
- I. Integration Services
- J. Port mirroring
- K. Single-root I/O virtualization

Complete collection of 70-410 Exam's Question and answers.

<http://www.passleader.com/>

**Correct Answer: C**

**Section: (none)**

**Explanation**

#### QUESTION 108

Your network contains a server named Server1 that runs Windows Server 2012. Server1 has the Hyper-V server role installed. Server1 hosts four virtual machines named VM1, VM2, VM3, and VM4. Server1 is

configured as shown in the following table.

Hardware component	Configuration
Processor	Eight quad-core CPUs that have non-uniform memory access (NUMA)
Memory	32 GB of RAM
Disk	Two local 4-TB disks
Network	Eight network adapters VMQ-supported PCI-SIG-supported

You need to ensure that VM1 can use more CPU time than the other virtual machines when the CPUs on Server1 are under a heavy load. What should you configure?

- A. NUMA topology
- B. Resource control
- C. resource metering
- D. Virtual Machine Chimney
- E. The VLAN ID
- F. Processor Compatibility
- G. The startup order
- H. Automatic Start Action
- I. Integration Services
- J. Port mirroring
- K. Single-root I/O virtualization

**Correct Answer: B**

**Section: (none)**

**Explanation**

#### QUESTION 109

Your network contains a server named Server1 that runs Windows Server 2012. Server1 has the Hyper-V server role installed. Server1 hosts four virtual machines named VM1, VM2, VM3, and VM4. Server1 is configured as shown in the following table. Complete collection of 70-410 Exam's Question and answers. <http://www.passleader.com/>

Hardware component	Configuration
Processor	Eight quad-core CPUs that have non-uniform memory access (NUMA)
Memory	32 GB of RAM
Disk	Two local 4-TB disks
Network	Eight network adapters VMQ-supported PCI-SIG-supported

VM2 sends and receives large amounts of data over the network. You need to ensure that the network traffic of VM2 bypasses the virtual switches of the parent partition. What should you configure?

- A. NUMA topology

- B. Resource control
- C. Resource metering
- D. Virtual Machine Chimney
- E. The VLAN ID
- F. Processor Compatibility
- G. The startup order
- H. Automatic Start Action
- I. Integration Services
- J. Port mirroring
- K. Single-root I/O virtualization

**Correct Answer:** K

**Section:** (none)

**Explanation**

#### QUESTION 110

Your network contains an Active Directory domain named contoso.com. The network contains a member server named Server1 that runs Windows Server 2012. Server1 has the DNS Server server role installed and has a primary zone for contoso.com. The Active Directory domain contains 500 client computers. There are an additional 20 computers in a workgroup. You discover that every client computer on the network can add its record to the contoso.com zone. You need to ensure that only the client computers in the Active Directory domain can register records in the contoso.com zone. What should you do first?

- A. Move the contoso.com zone to a domain controller that is configured as a DNS server
- B. Configure the Dynamic updates settings of the contoso.com zone
- C. Sign the contoso.com zone by using DNSSEC
- D. Configure the Security settings of the contoso.com zone.

**Correct Answer:** A

**Section:** (none)

**Explanation**

#### QUESTION 111

Your company has a remote office that contains 1,600 client computers on a single subnet. You need to select a subnet mask for the network that will support all of the client computers. The Complete collection of 70-410 Exam's Question and answers.

<http://www.passleader.com/>

solution must minimize the number of unused addresses. Which subnet mask should you select?

- A. 255.255.248.0
- B. 255.255.252.0
- C. 255.255.254.0
- D. 255.255.240.0

**Correct Answer:** A

**Section:** (none)

**Explanation**

#### QUESTION 112

You plan to deploy a DHCP server that will support four subnets. The subnets will be configured as shown in the following table.

Subnet name	Number of hosts
Subnet1	50
Subnet2	110
Subnet3	400
Subnet4	525

You need to identify which network ID you should use for each subnet. What should you identify? To answer, drag the appropriate network ID to the each subnet in the answer area.

Network IDs	Answer Area
10.10.1.0/26	Subnet1 Network ID
10.10.8.0/22	Subnet2 Network ID
10.10.16.0/25	Subnet3 Network ID
10.10.128.0/23	Subnet4 Network ID

- A.
- B.
- C.
- D.

**Correct Answer:**

**Section: (none)**

**Explanation**

**Explanation/Reference:**

Complete collection of 70-410 Exam's Question and answers.

<http://www.passleader.com/>

Network IDs	Answer Area
	Subnet1 10.10.1.0/26
	Subnet2 10.10.16.0/25
	Subnet3 10.10.128.0/23
	Subnet4 10.10.8.0/22

#### QUESTION 113

Your network contains an Active Directory domain named contoso.com. All user accounts are in an organizational unit (OU) named Employees. You create a Group Policy object (GPO) named GP1. You link GP1 to the Employees OU.

You need to ensure that GP1 does not apply to the members of a group named Managers.

What should you configure?

- A. The Security settings of Employees

- B. The WMI filter for GP1
- C. The Block Inheritance option for Employees
- D. The Security settings of GP1

**Correct Answer:** D

**Section:** (none)

**Explanation**

#### QUESTION 114

Your network contains a server named Server1 that runs Windows Server 2012. Server1 is located on the same subnet as all of the client computers. A network technician reports that he receives a "Request timed out" error message when he attempts to use the ping utility to connect to Server1 from his client computer. The network technician confirms that he can access resources on Server1 from his client computer. You need to configure Windows Firewall with Advanced Security on Server1 to allow the ping utility to connect.

Which rule should you enable?

- A. File and Printer Sharing (Echo Request - ICMPv4-In)
- B. Network Discovery (WSD-In)
- C. File and Printer Sharing (NB-Session-In)
- D. Network Discovery (SSDP-In)

**Correct Answer:** A

**Section:** (none)

**Explanation**

#### QUESTION 115

You have a file server named Server1 that runs Windows Server 2012. You need to ensure that a user named User1 can use Windows Server Backup to create a complete backup of Server1. What should you configure?

- A. The local groups by using Computer Management  
Complete collection of 70-410 Exam's Question and answers.  
<http://www.passleader.com/>
- B. A task by using Authorization Manager
- C. The User Rights Assignment by using the Local Group Policy Editor
- D. The Role Assignment by using Authorization Manager

**Correct Answer:** A

**Section:** (none)

**Explanation**

#### QUESTION 116

Your network contains a production Active Directory forest named contoso.com and a test Active Directory forest named contoso.test. A trust relationship does not exist between the forests. In the contoso.test domain, you create a backup of a Group Policy object (GPO) named GPO1. You transfer the backup of GPO1 to a domain controller in the contoso.com domain. You need to create a GPO in contoso.com based on the settings of GPO1. You must achieve this goal by using the minimum amount of Administrative effort. What should you do?

- A. From Windows PowerShell, run the Get- GPO cmdlet and the Copy- GPO cmdlet.
- B. From Windows PowerShell, run the New- GPO cmdlet and the Import- GPO cmdlet.
- C. From Group Policy Management, create a new starter GPO. Right-click the new starter GPO, and then click Restore from Backup.
- D. From Group Policy Management, right-click the Group Policy Objects container, and then click Manage Backups.

**Correct Answer:** B  
**Section:** (none)  
**Explanation**

#### QUESTION 117

Your network contains an active directory forest. The forest functional level is Windows server 2012. The forest contains a single domain. The domain contains a member server named Server1 that run windows server 2012. You purchase a network scanner named Scanner1 that supports Web Services on Devices (WDS). You need to share the network scanner on Server1 Which server role should you install on Server1?

- A. Print and Document Services
- B. File and Storage Services
- C. Web Server (iis)
- D. Fax Server

**Correct Answer:** A  
**Section:** (none)  
**Explanation**

#### QUESTION 118

Your network contains an Active Directory forest named contoso.com. The forest contains a child domain named europe.contoso.com. The europe.contoso.com child domain contains a server named Server1 that runs Windows Server 2012. You install the DHCP Server server role on Server1. You have access to the administrative accounts shown in the following table. Complete collection of 70-410 Exam's Question and answers.

<http://www.passleader.com/>

Account name	Account location	Member of
Admin1	Server1	Server1\Administrators
Admin2	Europe.contoso.com	Europe\Domain Admins
Admin3	Europe.contoso.com	Europe\Administrators
Admin4	Contoso.com	Contoso\Enterprise Admins

You need to authorize Server1. Which user account should you use?

- A. Admin1
- B. Admin2
- C. Admin3
- D. Admin4

**Correct Answer:** D  
**Section:** (none)  
**Explanation**

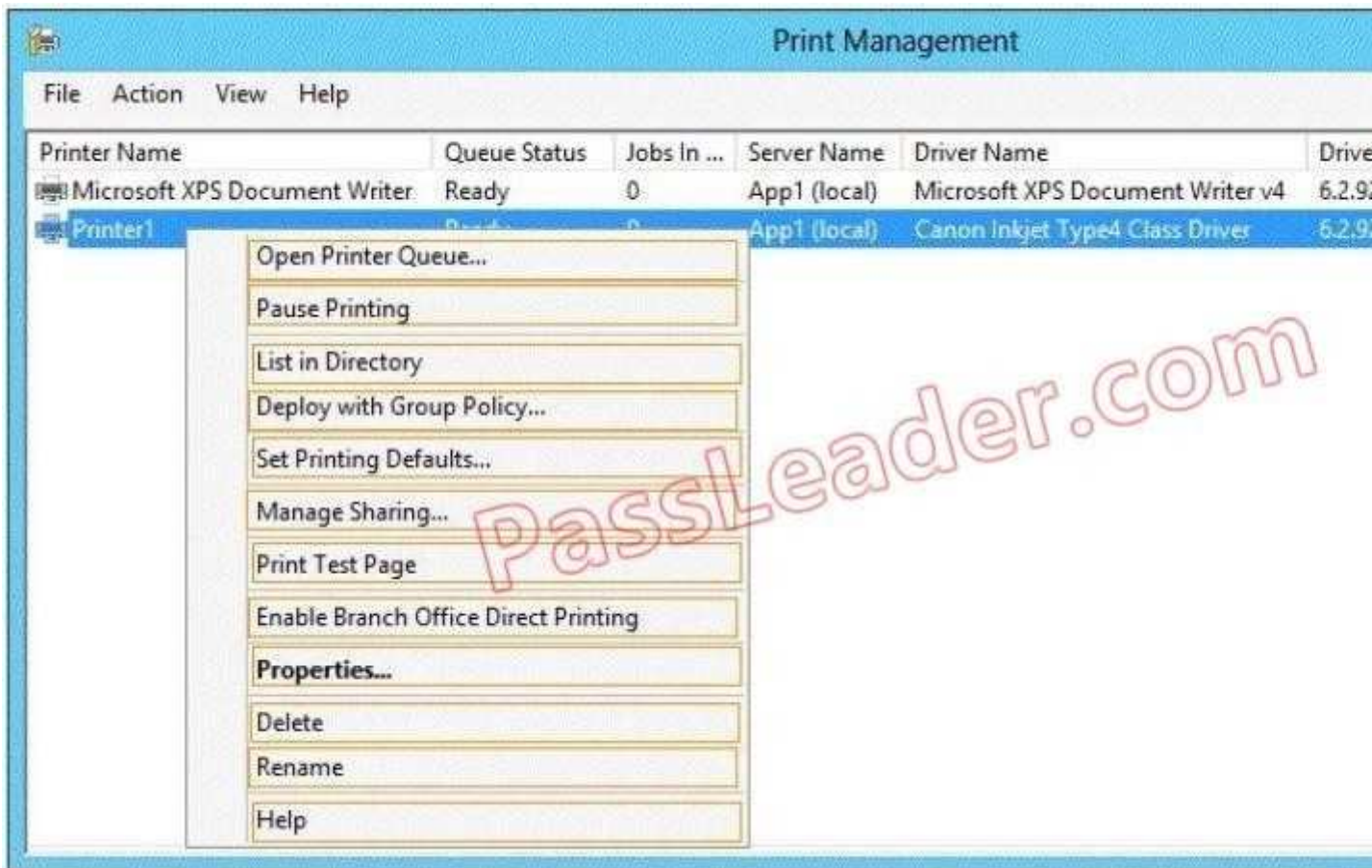
#### QUESTION 119

Your network contains a server named Server1 that runs Windows Server 2012. App1 has the Print and Document Services server role installed. All client computers run Windows 8. The network contains a network-attached print device named Printer1. From App1, you share Printer1. You need to ensure that users who have connected to Printer1 previously can print to Printer1 if App1 fails.

What should you configure?

To answer, select the appropriate option in the answer area.





- A.
- B.
- C.
- D.

**Correct Answer:**

**Section: (none)**

**Explanation**

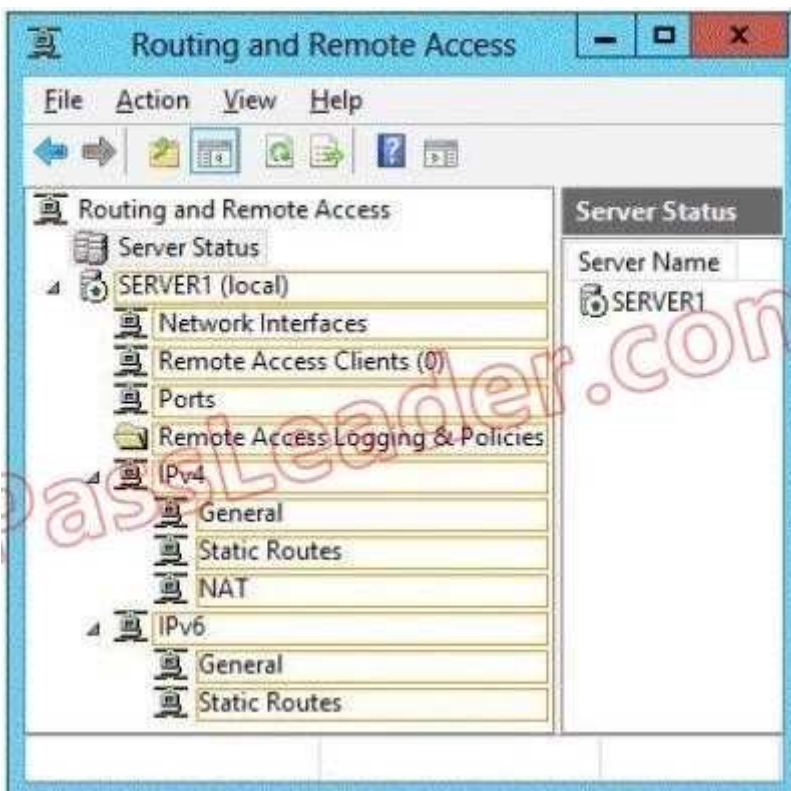
**Explanation/Reference:**

Complete collection of 70-410 Exam's Question and answers.  
<http://www.passleader.com/>



### QUESTION 120

You have a server named Server1. Server1 runs Windows Server 2012. Server1 has two network adapters and is located in a perimeter network. You need to install a DHCP Relay Agent on Server1. Which node should you use to add the DHCP Relay Agent? To answer, select the appropriate node in the answer area.



- A.
- B.
- C.
- D.

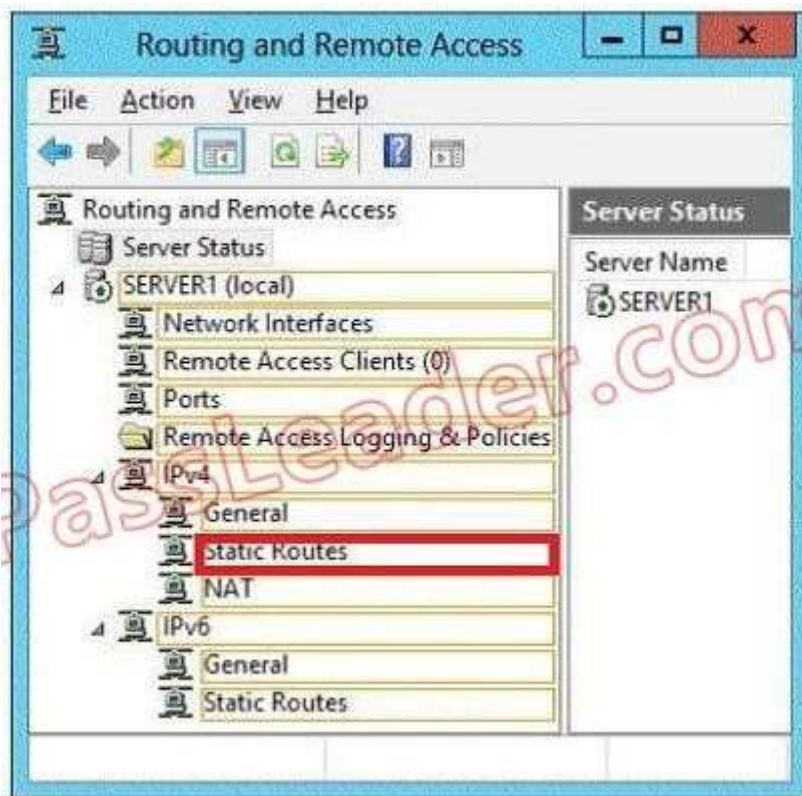
**Correct Answer:**

**Section: (none)**

**Explanation**

**Explanation/Reference:**

Complete collection of 70-410 Exam's Question and answers.  
<http://www.passleader.com/>

**QUESTION 121**

You have a server named Server1 that runs Windows Server 2012. Server1 has following storage spaces:

- ?Data
- ?Users
- ?Backups
- ?Primordial

You add an additional hard disk to Server1. You need to identify which storage space contains the new hard disk. Which storage space contains the new disk?

- A. Data
- B. Primordial
- C. Users
- D. Backups

**Correct Answer: B**

**Section: (none)**

**Explanation**

**QUESTION 122**

You have a server named Server1. Server1 runs Windows Server 2012 and has the File and Storage Services server role installed. You attach four 500-GB disks to Server1. You need to configure the storage to meet the following requirements:

?Storage for an application named Application1 must be provided. Application1 requires 20 GB and will require a maximum of 800 GB in three years. ?Storage for an application named Complete collection of 70-410 Exam's Question and answers.

<http://www.passleader.com/>

Application2 must be provided. Application2 requires 20 GB and will require a maximum of 900 GB in three

years. ?The solution must provide the ability to dynamically add storage without requiring configuration changes to the applications.

?The storage must be available if a single disk fails. Which two actions should you perform? (Each correct answer presents part of the solution. Choose two.)

- A. From File and Storage Services, create virtual disks by using fixed provisioning.
- B. From File and Storage Services, create a storage pool that uses all four disks.
- C. From Disk Management, create two new mirror volumes that use two disks each.
- D. From Disk Management, create a new RAID-5 volume that uses all four disks.
- E. From File and Storage Services, create virtual disks by using thin provisioning.

**Correct Answer:** AB

**Section:** (none)

**Explanation**

#### QUESTION 123

Your network contains multiple subnets. On one of the subnets, you deploy a server named Server1 that runs Windows Server 2012. You install the DNS Server server role on Server1, and then you create a standard primary zone named contoso.com. You need to ensure that client computers can resolve single-label names to IP addresses. What should you do first?

- A. Create a reverse lookup zone.
- B. Convert the contoso.com zone to an Active Directory-integrated zone.
- C. Configure dynamic updates for contoso.com.
- D. Create a GlobalNames zone.

**Correct Answer:** D

**Section:** (none)

**Explanation**

#### QUESTION 124

You have a server named Server1 that runs Windows Server 2012. Server1 has six network adapters. Two of the network adapters are connected to a network named LAN1, two of the network adapters are connected to a network named LAN2, and two of the network adapters are connected to a network named LAN3. You create a network adapter team named Team1 from the two adapters connected to LAN1. You create a network adapter team named Team2 from the two adapters connected to LAN2. A company policy states that all server IP addresses must be assigned by using a reserved address in DHCP. You need to identify how many DHCP reservations you must create for Server1. How many reservations should you identify?

- A. 3
- B. 4
- C. 6
- D. 8

**Correct Answer:** B

**Section:** (none)

**Explanation**

#### QUESTION 125

Your network contains an Active Directory domain named contoso.com. All servers run Windows Server 2012. The domain contains a server named Server1. You open Review Options in the Active Directory Domain Services Configuration Wizard, and then you click View script. You need to ensure that you can use the script to promote Server1 to a domain controller. Which file extension should you use to save the script?

Complete collection of 70-410 Exam's Question and answers.  
<http://www.passleader.com/>

- A. .pal
- B. .bat
- C. .xml
- D. .cmd

**Correct Answer:** A

**Section:** (none)

**Explanation**

#### QUESTION 126

Your network contains an Active Directory domain named contoso.com. The domain contains a server named Server1. Server1 runs a Server Core installation of Windows Server 2012. You install the DNS Server server role on Server1. You need to perform the following configurations on Server1:

?Create an Active Directory-integrated zone named adatum.com.

?Send unresolved DNS client queries for other domain suffixes to the DNS server of your company's Internet Service Provider (ISP).

Which Windows PowerShell cmdlets should you use?

To answer, drag the appropriate cmdlet to the correct configuration in the answer area. Each cmdlet may be used once, more than once, or not at all. You may need to drag the split bar between panes or scroll to view content.

Cmdlets	Answer Area
Add-DNSServerDirectoryPartition	Create an Active Directory-integrated zone named adatum.com.
Add-DNSServerPrimaryZone	
Set-DNSServer	Send unresolved DNS client queries for other domain suffixes to the DNS server of your company's Internet Service Provider (ISP).
Set-DNSServerForwarder	
Set-DNSServerDSSetting	
Set-DNSServerSetting	

- A.
- B.
- C.
- D.

**Correct Answer:**

**Section:** (none)

**Explanation**

**Explanation/Reference:**

Create an Active Directory-integrated zone named adatum.com.	Add-DNSServerPrimaryZone
Send unresolved DNS client queries for other domain suffixes to the DNS server of your company's Internet Service Provider (ISP).	Set-DNSServerForwarder



**QUESTION 127**

Your network contains an Active Directory domain named contoso.com. The network contains 500 client computers that run Windows 8. All of the client computers connect to the Internet by using a web proxy. You deploy a server named Server1 that runs Windows Server 2012. Server1 has the DNS Server server role installed. You configure all of the client computers to use Server1 as their primary DNS server. You need to prevent Server1 from attempting to resolve Internet host names for the client computers. What should you do on Server1? Complete collection of 70-410 Exam's Question and answers.

<http://www.passleader.com/>

- A. Create a primary zone named ".".
- B. Configure the Security settings of the contoso.com zone.
- C. Create a zone delegation for GlobalNames.contoso.com.
- D. Create a stub zone named "root".

**Correct Answer: B**

**Section: (none)**

**Explanation**

**QUESTION 128**

Your network contains an Active Directory domain named contoso.com. The domain contains 100 user accounts that reside in an organizational unit (OU) named OU1. You need to ensure that a user named User1 can link and unlink Group Policy objects (GPOs) to OU1. The solution must minimize the number of permissions assigned to User1. What should you do?

- A. Modify the permissions on OU1.
- B. Run the Set-GPPermission cmdlet.
- C. Add User1 to the Group Policy Creator Owners group.
- D. Modify the permissions on the User1 account.

**Correct Answer: A**

**Section: (none)**

**Explanation**

**QUESTION 129**

Your network contains an Active Directory domain named contoso.com. The domain contains two servers named Server1 and Server2 that run Windows Server 2012. You create a security template named Template1 by using the Security Templates snap-in. You need to apply Template1 to Server2. Which tool should you use?

- A. System Configuration
- B. Authorization Manager
- C. Computer Management
- D. Local Security Policy

**Correct Answer: A**

**Section: (none)**

**Explanation**

**QUESTION 130**

What should you do for server core so it can be managed from another server 2012?



```
Administrator: C:\Windows\system32\cmd.exe - sconfig

=====
Server Configuration
=====

1> Domain/Workgroup: Workgroup: WORKGROUP
2> Computer Name: WIN-UJ8HPBRUG65
3> Add Local Administrator
4> Configure Remote Management Enabled
5> Windows Update Settings: Manual
6> Download and Install Updates
7> Remote Desktop: Disabled
8> Network Settings
9> Date and Time
10> Help improve the product with CEIP Not participating
11> Windows Activation
12> Log Off User
13> Restart Server
14> Shut Down Server
15> Exit to Command Line

Enter number to select an option:
```

Complete collection of 70-410 Exam's Question and answers.  
<http://www.passleader.com/>

- A. 1
- B. 2
- C. 3
- D. 4
- E. 5
- F. 6
- G. 7
- H. 8
- I. 9
- J. 10
- K. 11
- L. 12
- M. 13
- N. 14
- O. 15

**Correct Answer:** H

**Section:** (none)

**Explanation**

**Explanation/Reference:**

Complete collection of 70-410 Exam's Question and answers.  
<http://www.passleader.com/>



<http://www.gratisexam.com/>