

PracticeTest 70-410 V2013-04-16 by BruceyB/JelliedInfantCompote

Number: 70-410
Passing Score: 700
Time Limit: 120 min
File Version: 1.1



<http://www.gratisexam.com/>

**All Questions modified with Links to Technet or other sources
Question 116 is a full list of all references/links (some were useless. Added correct/more useful links. I didn't feel like diddling with the table. - Jelly)**

**Fixed available answers of Q39 - Jelly
Changed the answer of Q114 - Jelly**

10 new Questions added

Sources:

**Microsoft.PracticeTest.70-410.v2013-03-03.by.Keyser.105
Microsoft.Yesuse.70-410.v2013-03-19.by.hofe.119q
Microsoft.PassLeader.70-410.v2013-04-01.by.Gambit.130q
Microsoft.PracticeTest.70-410.v2013-02-13.by.Rimka.90q.vce
ZooYork pictures**

Exam A

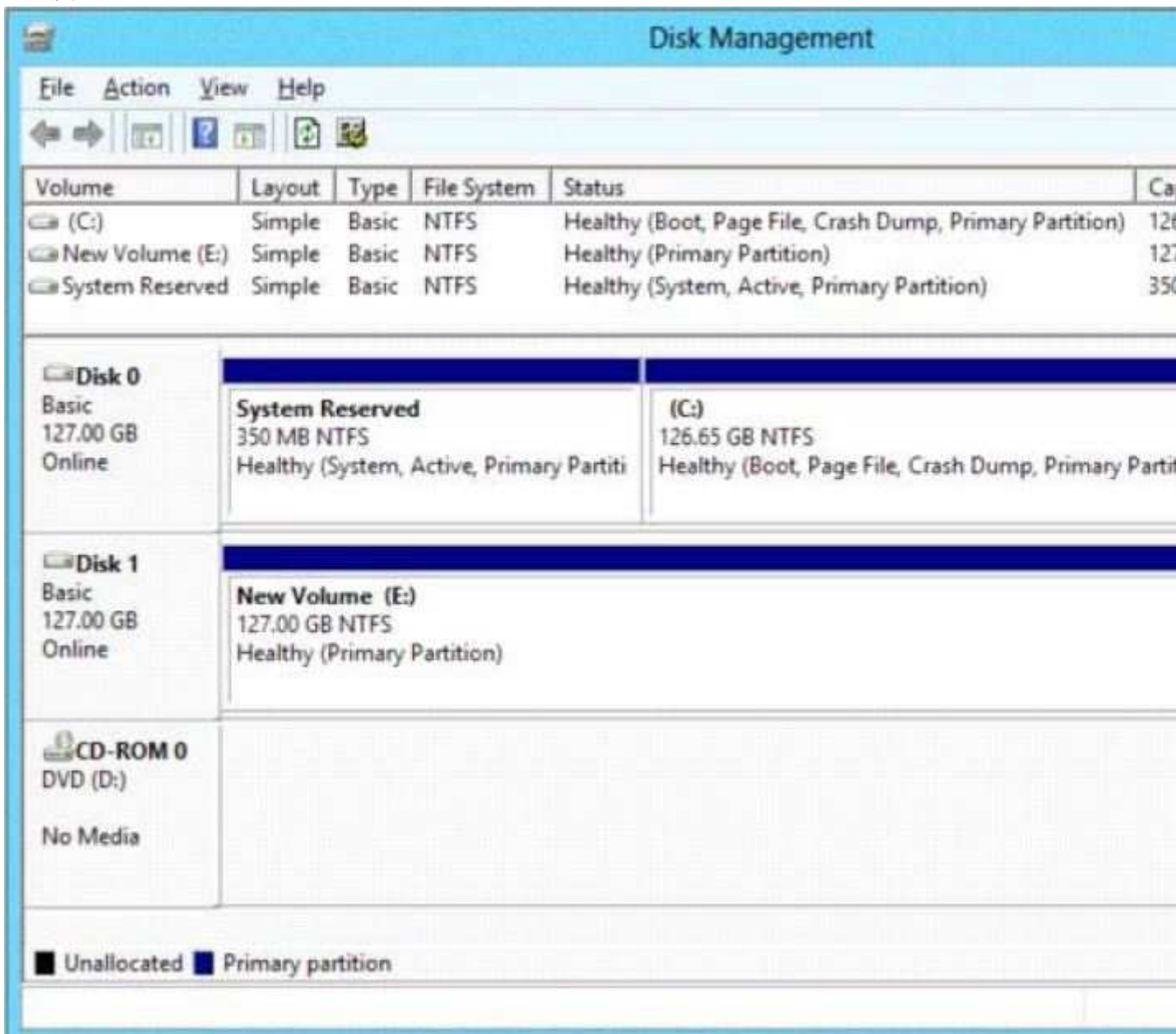
QUESTION 1

You have a server named Server1 that runs Windows Server 2012. Server1 has the Hyper-V server role installed. The disks on Server1 are configured as shown in the exhibit. (Click the Exhibit button.)

You create a virtual machine on Server1. You need to ensure that you can configure a pass-through disk for the virtual machine.

What should you do?

Exhibit:



- A. Delete partition E.
- B. Convert Disk 1 to a GPT disk
- C. Convert Disk 1 to a dynamic disk.
- D. Take Disk 1 offline.

Correct Answer: D

Section: (none)

Explanation

Explanation/Reference:

D: **Pass-Through Disk must be offline**

<http://blogs.technet.com/b/askcore/archive/2008/10/24/configuring-pass-through-disks-in-hyper-v.aspx>

QUESTION 2

You have a server named Server1 that runs Windows Server 2012. Server1 has the Hyper-V server role installed.

You have fixed-size VHD named Files.vhd.

You need to make the contents in Files.vhd available to several virtual machines. The solution must meet the following requirements:

- Ensure that if the contents are changed on any virtual machine, the changes are not reflected on the other virtual machines.
- Minimize the amount of disk space used.

What should you do?

- A. Create a fixed-size VHDX. Transfer the information from Files.vhd to the new VHDX file.
- B. Convert Files.vhd to a dynamically expanding VHD.
- C. Create a dynamically expanding VHDX. Transfer the information from Files.vhd to the new VHDX file.
- D. Create differencing VHDs that use Files.vhd as the parent disk.

Correct Answer: D

Section: (none)

Explanation**Explanation/Reference:**

- A. A conversion would be needed from VHD to VHDX. Not available to multiple VM's
- B. Single VHD not available to multiple VM's. Changes wouldn't be reflected
- C. A conversion would be needed from VHD to VHDX. Not available to multiple VM's
- D. **Child disk for multiple VM's with Files.vhd as parent**

A differencing disk is associated with another virtual hard disk that you select when you create the differencing disk. This means that the disk to which you want to associate the differencing disk must exist first. This virtual hard disk is called the "parent" disk and the differencing disk is the "child" disk. The parent disk can be any type of virtual hard disk. The differencing disk stores all changes that would otherwise be made to the parent disk if the differencing disk was not being used. The differencing disk provides an ongoing way to save changes without altering the parent disk. You can use the differencing disk to store changes indefinitely, as long as there is enough space on the physical disk where the differencing disk is stored. The differencing disk expands dynamically as data is written to it and can grow as large as the maximum size allocated for the parent disk when the parent disk was created.

[http://technet.microsoft.com/en-us/library/cc720381\(v=ws.10\).aspx](http://technet.microsoft.com/en-us/library/cc720381(v=ws.10).aspx)

QUESTION 3

You have a server named Server1 that runs Windows Server 2012. Server1 has the Hyper-V server role installed. On Server1, you create a virtual machine named VM1. VM1 has a legacy network adapter.

You need to assign a specific amount of available network bandwidth to VM1.

What should you do first?

- A. Remove the legacy network adapter, and then run the Set-VMNetworkAdaptercmdlet.
- B. Add a second legacy network adapter, and then run the Set-VMNetworkAdaptercmdlet
- C. Add a second legacy network adapter, and then configure network adapter teaming.
- D. Remove the legacy network adapter, and then add a network adapter

Correct Answer: D

Section: (none)

Explanation

Explanation/Reference:

- A. Set-VMNetworkAdaptercmdlet configures features of the virtual network adapter in a virtual machine or the management operating system
- B. The legacy network adapter doesn't support bandwidth management
- C. The legacy network adapter doesn't support bandwidth management
- D. **Add a New network adapter The legacy network adapter doesn't support bandwidth management**

[http://technet.microsoft.com/en-us/library/hh848457\(v=wps.620\).aspx](http://technet.microsoft.com/en-us/library/hh848457(v=wps.620).aspx)

QUESTION 4

Your network contains an Active Directory domain named adatum.com. The domain contains a server named Server1 that runs Windows Server 2012. On a server named Core1, you perform a Server Core Installation of Windows Server 2012. You join Core1 to the adatum.com domain.

You need to ensure that you can use Event Viewer on Server1 to view the event logs on Core1.

What should you do on Core1?

- A. Run the Enable-NetFirewallRule cmdlet.
- B. Run sconfig.exe and configure remote management
- C. Run the Disable-NetFirewallRule cmdlet.
- D. Run sconfig.exe and to configure the network settings.

Correct Answer: A

Section: (none)

Explanation

Explanation/Reference:

- A. **Allows MMC snap in for Event Viewer**
- B. sconfig is a .CMD file NOT a .EXE
- C. Would Disable a firewall rule which was enabled
- D. sconfig is a .CMD file NOT a .EXE

[http://technet.microsoft.com/en-us/library/cc990290\(v=ws.10\).aspx](http://technet.microsoft.com/en-us/library/cc990290(v=ws.10).aspx)

<http://technet.microsoft.com/en-us/library/jj574205.aspx>

▲ To configure Windows Firewall to allow MMC snap-in(s) to connect

- To allow all MMC snap-ins to connect, run
`Enable-NetFirewallRule -DisplayGroup "Remote Administration"`

- To allow only specific MMC snap-ins to connect, run:
`Enable-NetFirewallRule -DisplayGroup "<rulegroup>"`

Where:

Rulegroup is one of the values from the table below, depending on which snap-in you want to connect.

MMC snap-in	Rule group
Event Viewer	Remote Event Log Management
...	...

QUESTION 5

Your network contains a file server named Server1 that runs Windows Server 2012. All client computers

run Windows 8.

You need to ensure that when users are connected to the network, they always use local offline files that are cached from Server1.

Which Group Policy setting should you configure?

- A. Configure slow-link mode.
- B. Configure Slow link speed
- C. Enable file synchronization on costed networks
- D. Turn on economical application of Administratively assigned Offline Files.

Correct Answer: A

Section: (none)

Explanation

Explanation/Reference:

A. **Can force Offline Files by setting slow link mode speed to number greater than available bandwidth. Offline Files to provide faster access to cached files and redirected folders by storing them locally.**

B. Defines a slow connection for purposes of applying and updating Group Policy. Must enable Slow Link Mode FIRST.

C. Automatically tracks roaming and bandwidth usage limits while on metered connections

D. Lists network files and folders that are always available for offline use. This policy makes the specified files and folders available offline to users of the computer.

<http://technet.microsoft.com/en-us/library/hh968298.aspx>

<http://technet.microsoft.com/en-us/library/cc957631.aspx>

<http://technet.microsoft.com/en-us/library/jj127408.aspx>

QUESTION 6

Your network contains an Active Directory domain named contoso.com. All servers run either Windows Server 2008 R2 or Windows Server 2012. All client computers run either Windows 7 or Windows 8. The domain contains a member server named Server1 that runs Windows Server 2012. Server1 has the File and Storage Services server role installed. On Server1, you create a share named Share1.

You need to ensure that users can use Previous Versions to restore the files in Share1.



<http://www.gratisexam.com/>

What should you configure on Server1?

- A. The Shadow Copies settings
- B. A Windows Server Backup schedule
- C. A data recovery agent
- D. The Recycle Bin properties

Correct Answer: A

Section: (none)

Explanation

Explanation/Reference:

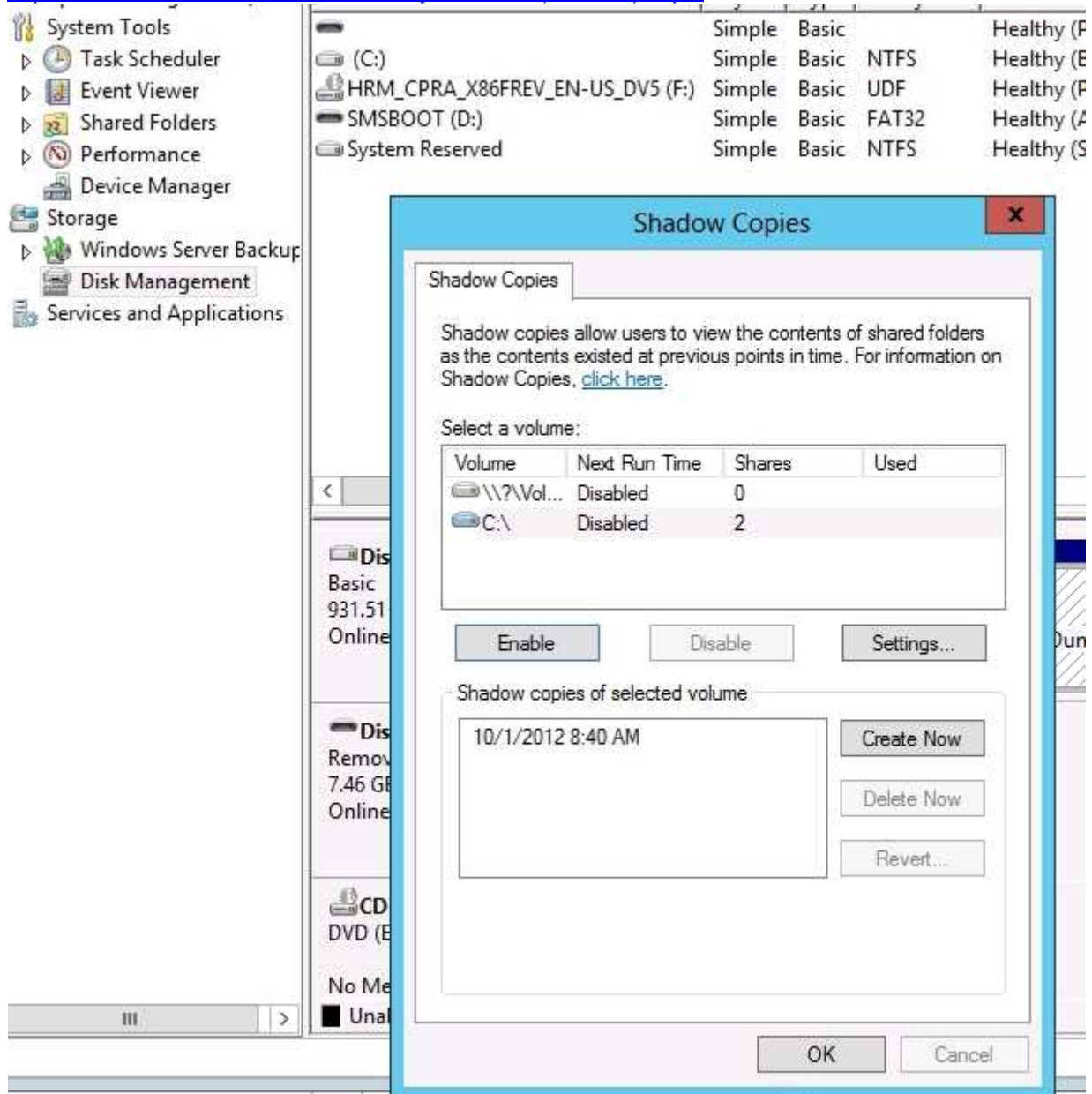
A. **Enable and schedule shadow copies for Share1**

B. The backup doesn't give users access until files are restored

C. Allows for decrypting encrypted files for other users.

D. No settings for file version

[http://technet.microsoft.com/en-us/library/cc786104\(v=ws.10\).aspx](http://technet.microsoft.com/en-us/library/cc786104(v=ws.10).aspx)



QUESTION 7

You have a server named Server1 that runs Windows Server 2012. Server1 has the Print and Document Services server role installed. Server1 is connected to two identical print devices.

You need to ensure that users can submit print jobs to the print devices.

The solution must ensure that if one print device fails, the print jobs will print automatically on the other print device.

What should you do on Server1?

- A. Add two printers and configure the priority of each printer.
- B. Add one printer and configure printer pooling.
- C. Install the Network Load Balancing (NLB) feature, and then add one printer.
- D. Install the Failover Clustering feature, and then add one printer

Correct Answer: B

Section: (none)

Explanation

Explanation/Reference:

- A. Expedite documents that need to be printed immediately
- B. **A printing pool is one logical printer connected to multiple printers through multiple ports of the print server. The printer that is idle receives the next document sent to the logical printer. When printing to a printer pool, the spooler will send waiting jobs to alternate ports. If the original or alternate ports are not available**
- C. NLB for printing is not supported
- D. Would need 2 nodes

[http://technet.microsoft.com/en-us/library/cc757086\(v=ws.10\).aspx](http://technet.microsoft.com/en-us/library/cc757086(v=ws.10).aspx)

[http://technet.microsoft.com/en-us/library/cc784619\(v=ws.10\).aspx](http://technet.microsoft.com/en-us/library/cc784619(v=ws.10).aspx)

<http://technet.microsoft.com/en-us/library/jj556311.aspx>

A printing pool is one logical printer connected to multiple printers through multiple ports of the print server. The printer that is idle receives the next document sent to the logical printer. This is useful in a network with a high volume of printing because it decreases the time users wait for their documents. A printing pool also simplifies administration because multiple printers can be managed from the same logical printer on a server.

QUESTION 8

Your network contains a server named Server1 that runs Windows Server 2012. Server1 has the Print and Document Services server role installed. You connect a new print device to the network. The marketing department and the sales department will use the print device.

You need to provide users from both departments with the ability to print to the network print device. The solution must ensure that if there are multiple documents queued to print, the documents from the sales users print before the documents from the marketing users.

What should you do on Server1?

- A. Add two printers. Modify the priorities of each printer and the security settings of each printer
- B. Add two printers and configure printer pooling
- C. Add one printer and configure printer pooling.
- D. Add one printer. Modify the printer priority and the security settings

Correct Answer: A

Section: (none)

Explanation

Explanation/Reference:

A. You gain no benefits just from setting a priority to a printer. You need to set at least two different logical printers for the same physical printer to take advantage of this option.

[http://technet.microsoft.com/en-us/library/cc738090\(v=ws.10\).aspx](http://technet.microsoft.com/en-us/library/cc738090(v=ws.10).aspx)

QUESTION 9

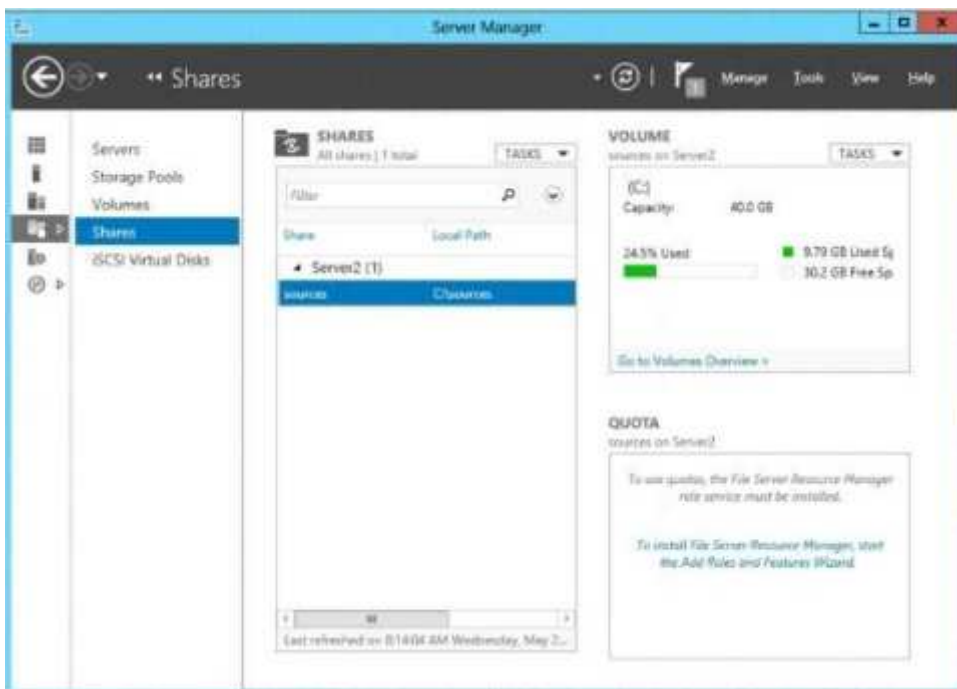
You have a server named Server2 that runs Windows Server 2012. You open Server Manager on Server2 as shown in the exhibit. (Click the Exhibit button.)

The Everyone group has read share permission and read NTFS permission to Sources.

You need to ensure that when users browse the network, the Sources share is not visible.

What should you do?

Exhibit:



- A. From the properties of the Sources folder, remove the Sources share, and then share the Sources folder as Sources\$
- B. From the properties of the Sources folder, deny the List Folder Contents permission for the Everyone group
- C. From the properties of the Sources share, configure access-based enumeration
- D. From the properties of the Sources folder, configure the hidden attribute

Correct Answer: A

Section: (none)

Explanation

Explanation/Reference:

A. **Need to remove the old share, \$ creates a hidden share**

B. This would deny everyone

C. This feature allows users of Windows Server 2003–based file servers to list only the files and folders to which they have access when browsing content on the file server

D. This would hide the physical folder not the share

<http://support.microsoft.com/kb/314984>

QUESTION 10

Your network contains an Active Directory domain named contoso.com. The network contains a server named Server1 that runs Windows Server 2012 and a server named Server2 that runs Windows Server 2008 R2 Service Pack 1 (SP1). Server1 and Server2 are member server.

You need to ensure that you can manage Server2 from Server1 by using Server Manager.

Which two tasks should you perform? (Each correct answer presents part of the solution. Choose two.)

- A. Install Remote Server Administration Tools on Server1.
- B. Install Windows Management Framework 3.0 on Server2.
- C. Install the Windows PowerShell 2.0 engine on Server1.
- D. Install Microsoft .NET Framework 4 on Server2.
- E. Install Remote Server Administration Tools on Server2

Correct Answer: BD

Section: (none)

Explanation

Explanation/Reference:

B. Install Windows Management Framework 3.0 on Server2.

D. Install Microsoft .NET Framework 4 on Server2.

<http://technet.microsoft.com/en-us/library/hh831456.aspx>

Software and configuration requirements

Server Manager is installed by default with all editions of Windows Server 2012. Although you can use Server Manager, Manager does not run directly on Server Core installation options.

To fully manage remote servers that are running Windows Server 2008 or Windows Server 2008 R2, install the following:

1. .NET Framework 4
2. Windows Management Framework 3.0 The Windows Management Framework 3.0 download package updates V Server Manager collect information about roles and features that are installed on the managed servers. Until the **Verify earlier versions run Windows Management Framework 3.0.**
3. The performance update associated with Knowledge Base article 2682011 allows Server Manager to collect per

QUESTION 11

Your network contains an Active Directory domain named contoso.com. The network contains a member server named Server1 that runs Windows Server 2012. Server1 has the DNS Server server role installed and has a primary zone for contoso.com. The Active Directory domain contains 500 client computers. There are an additional 20 computers in a workgroup. You discover that every client computer on the network can add its record to the contoso.com zone.

You need to ensure that only the client computers in the Active Directory domain can register records in the contoso.com zone.

What should you do first?

- A. Move the contoso.com zone to a domain controller that is configured as a DNS server
- B. Configure the Dynamic updates settings of the contoso.com zone
- C. Sign the contoso.com zone by using DNSSEC
- D. Configure the Security settings of the contoso.com zone.

Correct Answer: A

Section: (none)

Explanation

Explanation/Reference:

A. **Move the contoso.com zone to a domain controller that is configured as a DNS server.**

Active Directory Integrated DNS allows for Secure Updates which limits DNS updates to to Authenticated Users or Computers.

<http://technet.microsoft.com/en-us/library/cc961412.aspx>

QUESTION 12

Your company has a remote office that contains 1,600 client computers on a single subnet.

You need to select a subnet mask for the network that will support all of the client computers. The solution must minimize the number of unused addresses.

Which subnet mask should you select?

- A. 255.255.248.0
- B. 255.255.252.0
- C. 255.255.254.0
- D. 255.255.240.0

Correct Answer: A

Section: (none)

Explanation

Explanation/Reference:

Use the calculator.

Take the number of hosts needed and convert to binary.

1600 = 11001000000

Count the # of bits

11001000000 is 11 bits

Subtract 11 from 32 (total bits in a NETMASK) = 21

Convert to binary NETMASK.

11111111.11111111.1111000.00000000

Convert 3rd octet to binary

11111000 = 248

QUESTION 13

You plan to deploy a DHCP server that will support four subnets. The subnets will be configured as shown in the following table.

Subnet name	Number of hosts
Subnet1	50
Subnet2	110
Subnet3	400
Subnet4	525

You need to identify which network ID you should use for each subnet.

What should you identify? To answer, drag the appropriate network ID to the each subnet in the answer area.

Select and Place:

Network IDs	Answer Area
10.10.1.0/26	Subnet1: Network ID
10.10.8.0/22	Subnet2: Network ID
10.10.16.0/25	Subnet3: Network ID
10.10.128.0/23	Subnet4: Network ID

Correct Answer:

Network IDs	Answer Area
	Subnet1 10.10.1.0/26
	Subnet2 10.10.16.0/25
	Subnet3 10.10.128.0/23
	Subnet4 10.10.8.0/22

Section: (none)

Explanation

Explanation/Reference:

Use the calculator.

Take the number of hosts needed and convert to binary.

50 = 110010

Count the # of bits

110010 is 6 bits

Subtract 6 from 32 (total bits in a NETMASK) = 26

Rinse and repeat

QUESTION 14

Your network contains three servers that run Windows Server 2012. The servers are configured as shown in the following table (click Exhibit).

Server3 is configured to obtain an IP address automatically.

You need to ensure that Server3 only receives an IP address from Server1. The IP address must always be the same.

Which two tasks should you perform? (Each correct answer presents part of the solution. Choose two.)

Exhibit:

Server name	Server role
Server1	Active Directory Domain Services DHCP Server DNS Server
Server2	Remote Access DHCP Server
Server3	File and Storage Services

- A. Create an exclusion on Server1.
- B. Create a filter on Server1.
- C. Create a reservation on Server2
- D. Create a reservation on Server1
- E. Create a filter on Server2.

Correct Answer: DE

Section: (none)

Explanation

Explanation/Reference:

A. Exclude a range of IP's from a Scope

B. Wrong Server

C. Wrong Sever

D. **For clients that require a constant IP address, you can either manually configure a static IP address, or assign a reservation on the DHCP server**

E. **Add a Filter to exclude MAC address of Server3**

[http://technet.microsoft.com/en-us/library/cc754537\(v=ws.10\).aspx](http://technet.microsoft.com/en-us/library/cc754537(v=ws.10).aspx)

<http://technet.microsoft.com/en-us/magazine/ff521761.aspx>

[http://technet.microsoft.com/en-us/library/cc779507\(v=ws.10\).aspx](http://technet.microsoft.com/en-us/library/cc779507(v=ws.10).aspx)

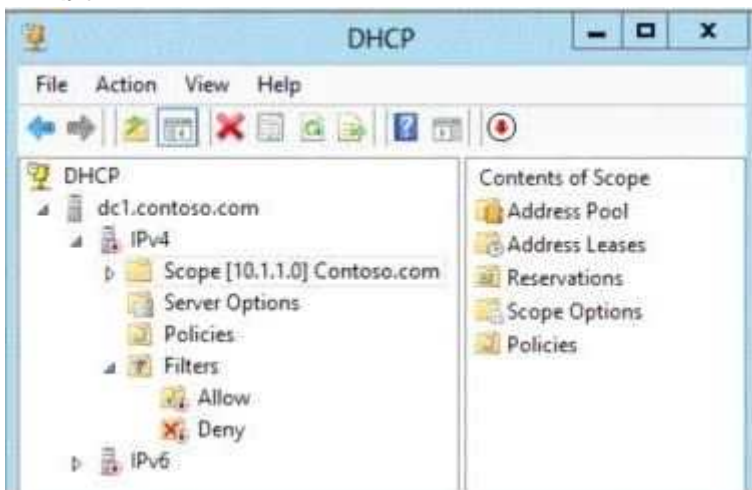
QUESTION 15

Your network contains an Active Directory domain named contoso.com. The domain contains a domain controller named DC1 that runs Windows Server 2012 and a client computer named Computer1 that runs Windows 8. DC1 is configured as a DHCP server as shown in the exhibit. (Click the Exhibit button.) Computer1 is configured to obtain an IP address automatically.

You need to ensure that Computer1 can receive an IP address from DC1.

What should you do?

Exhibit:



A. Disable the Allow filters.

B. Disable the Deny filters

C. Activate Scope [10.1.1.0] Contoso.com.

D. Authorize dc1.contoso.com.

Correct Answer: D

Section: (none)

Explanation

Explanation/Reference:

D. **A RED DOWN ARROW indicates a unauthorized DHCP server**

[http://technet.microsoft.com/en-us/library/ee941131\(v=ws.10\).aspx](http://technet.microsoft.com/en-us/library/ee941131(v=ws.10).aspx)

[http://technet.microsoft.com/en-us/library/gg722802\(v=ws.10\).aspx](http://technet.microsoft.com/en-us/library/gg722802(v=ws.10).aspx)

QUESTION 16

Your network contains an Active Directory domain named contoso.com. The domain contains a domain controller named Server1 that has the DNS Server server role installed. Server1 hosts a primary zone for contoso.com. The domain contains a member server named Server2 that is configured to use Server1 as its primary DNS server. From Server2, you run nslookup.exe as shown in the exhibit. (Click the Exhibit button.)

You need to ensure that when you run Nslookup, the correct name of the default server is displayed.

What should you do?

Exhibit:



```
Administrator: Windows PowerShell
Windows PowerShell
Copyright (C) 2011 Microsoft Corporation. All rights reserved.

PS C:\Users\Administrator> nslookup
DNS request timed out.
    timeout was 2 seconds.
Default Server: Unknown
Address: 10.0.0.11

>
```

- A. From Advanced TCP/IP Settings on Server1, add contoso.com to the DNS suffix list
- B. On Server1, modify the Security settings of the contoso.com zone
- C. On Server1, create a reverse lookup zone.
- D. From Advanced TCP/IP Settings on Server2, add contoso.com to the DNS suffix list

Correct Answer: C

Section: (none)

Explanation

Explanation/Reference:

C. Make sure that a reverse lookup zone that is authoritative for the PTR resource record exists.

For more information about adding a reverse lookup zone, see "Adding a Reverse Lookup Zone"

<http://technet.microsoft.com/en-us/library/cc961417.aspx>

QUESTION 17

Your network contains an Active Directory domain named contoso.com. The domain contains a domain controller named DC1 that hosts the primary DNS zone for contoso.com. All client computers are configured to use DC1 as the primary DNS server.

You need to configure DC1 to resolve any DNS requests that are not for the contoso.com zone by querying the DNS server of your Internet Service Provider (ISP).

What should you configure?

- A. Name server (NS) records
- B. Conditional forwarders
- C. Forwarders
- D. Naming Authority Pointer (NAPTR) DNS resource records (RR)

Correct Answer: C

Section: (none)

Explanation

Explanation/Reference:

- A. Specifies a name server for the domain, which allows DNS lookups within various zones. Each primary and secondary name server should be declared through this record.
- B. A conditional forwarder is one that handles name resolution only for a specific domain.
- C. **Manage the Domain Name System (DNS) traffic between your network and the Internet.**
- D. A NATPR is used for a number of different applications, and its unique usefulness comes from its ability to use [regular expressions](#) and to chain multiple records together to form complex rewrite rules which produce new domain labels or [uniform resource identifiers](#) (URIs).

http://en.wikipedia.org/wiki/NAPTR_record
http://www.windowsnetworking.com/articles-tutorials/windows-2003/DNS_Conditional_Forwarding_in_Windows_Server_2003.html
<http://technet.microsoft.com/en-us/library/cc722542.aspx>
<http://technet.microsoft.com/en-us/library/cc754931.aspx>

QUESTION 18

Your network contains an Active Directory domain named contoso.com. All domain controllers run Windows Server 2012. The domain contains a server named Server1 that runs Windows Server 2012.

You need to ensure that when users log on to Server1, their user account is added automatically to a local group named Group1 during the log on process.

Which Group Policy settings should you modify?

- A. Restricted Groups
- B. Security Options
- C. User Rights Assignment
- D. Preferences

Correct Answer: D

Section: (none)

Explanation

Explanation/Reference:

- A. If a Restricted Groups policy is defined and Group Policy is refreshed, any current member not on the Restricted Groups policy members list is removed
- B. Security settings incorporated into policies are rules that administrators configure on a computer or multiple computers for the purpose of protecting resources on a computer
- C. User Rights Assignment policies determines which users or groups have logon rights or privileges on the computer
- D. **With Group Policy Preferences, local and domain accounts can be added to a local group without affecting the existing members of the group**

[http://technet.microsoft.com/en-us/library/cc785631\(v=ws.10\).aspx](http://technet.microsoft.com/en-us/library/cc785631(v=ws.10).aspx)
<http://www.grouppolicy.biz/2010/01/how-to-use-group-policy-preferences-to-secure-local-administrator-groups/>
[http://technet.microsoft.com/en-us/library/cc780182\(v=ws.10\).aspx](http://technet.microsoft.com/en-us/library/cc780182(v=ws.10).aspx)
<http://technet.microsoft.com/en-us/library/hh831424.aspx>

QUESTION 19

Your network contains an Active Directory domain named contoso.com.

You need to prevent users from installing a Windows Store app named App1.

What should you create?

- A. An application control policy executable rule
- B. An application control policy packaged app rule
- C. A software restriction policy certificate rule
- D. An application control policy Windows Installer rule

Correct Answer: B

Section: (none)

Explanation

Explanation/Reference:

- A. For .exe or .com
- B. **An Applocker Packaged App rule is to control Packaged Apps that run in the Windows 8 start screen.**
- C. You can create a certificate rule that identifies software and then allows or does not allow the software to

run, depending on the security level.
D. For .msi or .msp

<http://technet.microsoft.com/en-us/library/dd759068.aspx>
<http://technet.microsoft.com/en-us/library/hh994588.aspx>
<http://www.grouppolicy.biz/2012/08/how-manage-published-a-k-a-metro-apps-in-windows-8-using-group-policy/>
http://technet.microsoft.com/en-us/library/hh994597.aspx#BKMK_Cert_Rules

Windows 8 is coming REALLY SOON and of course one of the big new things to computer with that is the new Packaged Apps that run in the start screen. However these apps are very different and do not install like traditional apps to a path or have a true “executable” file to launch the program. Of course enterprises need a way to control these packaged apps and therefore Microsoft has added a new feature Packaged Apps option to the AppLocker feature.

QUESTION 20

Your network contains an Active Directory domain named contoso.com. The domain contains 500 servers that run Windows Server 2012. You have a written security policy that states the following:

- Only required ports must be open on the servers.
- All of the servers must have Windows Firewall enabled.
- Client computers used by Administrators must be allowed to access all of the ports on all of the servers.
- Client computers used by the Administrators must be authenticated before the client computers can access the servers.

You have a client computer named Computer1 that runs Windows 8.

You need to ensure that you can use Computer1 to access all of the ports on all of the servers successfully. The solution must adhere to the security policy.

Which three actions should you perform? (Each correct answer presents part of the solution. Choose three.)

- A. On Computer1, create a connection security rule
- B. On all of the servers, create an outbound rule and select the Allow the connection if it is secureoption.
- C. On all of the servers, create an inbound rule and select the Allow the connection if it is secureoption.
- D. On Computer1, create an inbound rule and select the Allow the connection if it is secureoption.
- E. On Computer1, create an outbound rule and select the Allow the connection if it is secureoption
- F. On all of the servers, create a connection security rule

Correct Answer: ACF

Section: (none)

Explanation

Explanation/Reference:

<http://technet.microsoft.com/en-us/library/cc772017.aspx>

Unlike firewall rules, which operate unilaterally, connection security rules require that both communicating computers have a policy with connection security rules or another compatible IPsec policy.

[http://technet.microsoft.com/en-us/library/cc753463\(v=ws.10\).aspx](http://technet.microsoft.com/en-us/library/cc753463(v=ws.10).aspx)

Traffic that matches a firewall rule that uses the Allow connection if it is secure setting bypasses Windows Firewall. The rule can filter the traffic by IP address, port, or protocol. This method is supported on Windows Vista® or Windows Server® 2008.

QUESTION 21

Your network contains an Active Directory domain named contoso.com. All user accounts are in an organizational unit (OU) named Employees. You create a Group Policy object (GPO) named GP1. You link GP1 to the Employees OU.

You need to ensure that GP1 does not apply to the members of a group named Managers.

What should you configure?

- A. The Security settings of Employees

- B. The WMI filter for GP1
- C. The Block Inheritance option for Employees
- D. The Security settings of GP1

Correct Answer: D

Section: (none)

Explanation

Explanation/Reference:

- A. Wrong Group
- B. Windows Management Instrumentation (WMI) filters allow you to dynamically determine the scope of Group Policy objects (GPOs) based on attributes of the target computer.
- C. Blocking inheritance prevents Group Policy objects (GPOs) that are linked to higher sites, domains, or organizational units from being automatically inherited by the child-level.
- D. **Permissions for the members of the Managers group would be set to Deny Apply the GP1 policy.**

[http://technet.microsoft.com/en-us/library/cc786636\(WS.10\).aspx](http://technet.microsoft.com/en-us/library/cc786636(WS.10).aspx)

<http://technet.microsoft.com/en-us/library/cc731076.aspx>

[http://technet.microsoft.com/en-us/library/cc779036\(v=ws.10\).aspx](http://technet.microsoft.com/en-us/library/cc779036(v=ws.10).aspx)

QUESTION 22

Your network contains a server named Server1 that runs Windows Server 2012. Server1 is located on the same subnet as all of the client computers. A network technician reports that he receives a "Request timed out" error message when he attempts to use the ping utility to connect to Server1 from his client computer. The network technician confirms that he can access resources on Server1 from his client computer.

You need to configure Windows Firewall with Advanced Security on Server1 to allow the ping utility to connect.

Which rule should you enable?

- A. File and Printer Sharing (Echo Request - ICMPv4-In)
- B. Network Discovery (WSD-In)
- C. File and Printer Sharing (NB-Session-In)
- D. Network Discovery (SSDP-In)

Correct Answer: A

Section: (none)

Explanation

Explanation/Reference:

- A. **Ping uses ICMP**

[http://en.wikipedia.org/wiki/Ping_\(networking_utility\)](http://en.wikipedia.org/wiki/Ping_(networking_utility))

QUESTION 23

You have a file server named Server1 that runs Windows Server 2012.

You need to ensure that a user named User1 can use Windows Server Backup to create a complete backup of Server1.

What should you configure?

- A. The local groups by using Computer Management
- B. A task by using Authorization Manager
- C. The User Rights Assignment by using the Local Group Policy Editor
- D. The Role Assignment by using Authorization Manager

Correct Answer: A

Section: (none)

Explanation

Explanation/Reference:**A. User needs to be added to local Backup Operator group**

B. Authorization Manager is a Role-Based Access Control (RBAC) framework that provides an administrative tool to manage authorization policy and a runtime that allows applications to perform access checks against that policy.

C. User Rights Assignment policies determines which users or groups have logon rights or privileges on the computer

D. Authorization Manager is a Role-Based Access Control (RBAC) framework that provides an administrative tool to manage authorization policy and a runtime that allows applications to perform access checks against that policy.

[http://technet.microsoft.com/en-us/library/cc780182\(v=ws.10\).aspx](http://technet.microsoft.com/en-us/library/cc780182(v=ws.10).aspx)

<http://msdn.microsoft.com/en-us/library/bb897401.aspx>

QUESTION 24

Your network contains a production Active Directory forest named contoso.com and a test Active Directory forest named contoso.test. A trust relationship does not exist between the forests. In the contoso.test domain, you create a backup of a Group Policy object (GPO) named GPO1. You transfer the backup of GPO1 to a domain controller in the contoso.com domain.

You need to create a GPO in contoso.com based on the settings of GPO1.

You must achieve this goal by using the minimum amount of Administrative effort.

What should you do?

A. From Windows PowerShell, run the Get- GPO cmdlet and the Copy- GPO cmdlet.

B. From Windows PowerShell, run the New- GPO cmdlet and the Import- GPO cmdlet.

C. From Group Policy Management, create a new starter GPO. Right-click the new starter GPO, and then click Restore from Backup.

D. From Group Policy Management, right-click the Group Policy Objects container, and then click Manage Backups.

Correct Answer: B

Section: (none)

Explanation

Explanation/Reference:

A. Copy-GPO requires a domain trust

B. The Import-GPO cmdlet imports the settings from a GPO backup into a specified target GPO. The target GPO can be in a different domain or forest than that from which the backup was made and it does not have to exist prior to the operation.

C.

D: You can also restore GPOs. This operation takes a backed-up GPO and restores it to the same domain from which it was backed up. You cannot restore a GPO from backup into a domain different from the GPO's original domain.

[http://technet.microsoft.com/en-us/library/cc781458\(v=WS.10\).aspx](http://technet.microsoft.com/en-us/library/cc781458(v=WS.10).aspx)

<http://technet.microsoft.com/en-us/library/hh967461.aspx>

<http://technet.microsoft.com/en-us/library/ee461050.aspx>

<http://technet.microsoft.com/en-us/library/ee461044.aspx>

QUESTION 25

Your network contains a server named Server1 that runs Windows Server 2012. Server1 has the Hyper-V server role installed. Server1 hosts four virtual machines named VM1, VM2, VM3, and VM4. Server1 is configured as shown in the following table.

Hardware component	Configuration
Processor	Eight quad-core CPUs that have non-uniform memory access (NUMA)
Memory	32 GB of RAM
Disk	Two local 4-TB disks
Network	Eight network adapters VMQ-supported PCI-SIG-supported

You install a network monitoring application on VM2.

You need to ensure that all of the traffic sent to VM3 can be captured on VM2.

What should you configure?

- A. NUMA topology
- B. Resource control
- C. resource metering
- D. virtual Machine Chimney
- E. the VLAN ID
- F. Processor Compatibility
- G. the startup order
- H. Automatic Start Action
- I. Integration Services
- J. Port mirroring
- K. Single-root I/O virtualization

Correct Answer: J

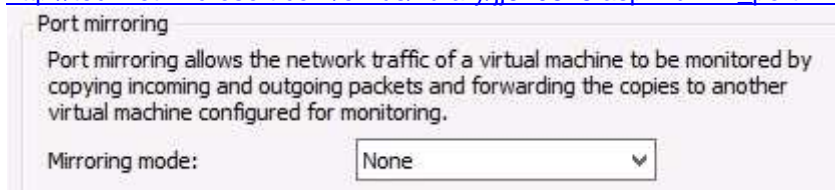
Section: (none)

Explanation

Explanation/Reference:

J. With Hyper-V Virtual Switch port mirroring, you can select the switch ports that are monitored as well as the switch port that receives copies of all the traffic

http://technet.microsoft.com/en-us/library/jj679878.aspx#bkmk_portmirror



QUESTION 26

Your network contains a server named Server1 that runs Windows Server 2012. Server1 has the Hyper-V server role installed. Server1 hosts four virtual machines named VM1, VM2, VM3, and VM4. Server1 is configured as shown in the following table.

Hardware component	Configuration
Processor	Eight quad-core CPUs that have non-uniform memory access (NUMA)
Memory	32 GB of RAM
Disk	Two local 4-TB disks
Network	Eight network adapters VMQ-supported PCI-SIG-supported

You plan to schedule a complete backup of Server1 by using Windows Server Backup.

You need to ensure that the state of VM1 is saved before the backup starts.

What should you configure?

- A. NUMA topology
- B. Resource control
- C. resource metering
- D. virtual Machine Chimney
- E. the VLAN ID
- F. Processor Compatibility
- G. the startup order
- H. Automatic Start Action
- I. Integration Services
- J. Port mirroring
- K. Single-root I/O virtualization

Correct Answer: I

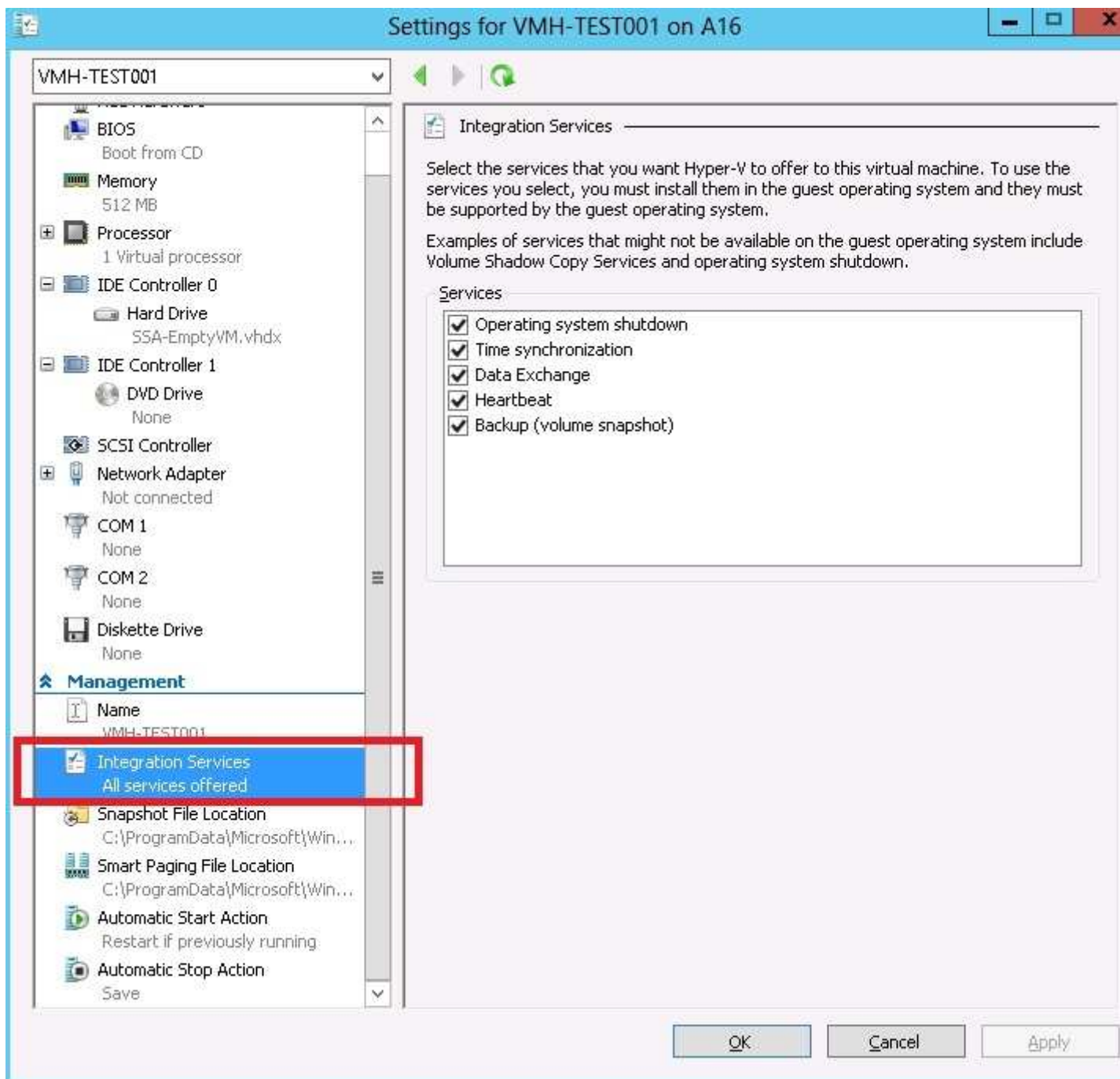
Section: (none)

Explanation

Explanation/Reference:

I. Integration Services

If the backup (volume snapshot) **integration services** are installed in the guest operating system, a VSS requester is installed that will allow VSS writers in the guest operating system to participate in the backup of the VM.



[http://msdn.microsoft.com/en-us/library/dd405549\(v=vs.85\).aspx](http://msdn.microsoft.com/en-us/library/dd405549(v=vs.85).aspx)

QUESTION 27

Your network contains a server named Server1 that runs Windows Server 2012. Server1 has the Hyper-V server role installed. Server1 hosts four virtual machines named VM1, VM2, VM3, and VM4. Server1 is configured as shown in the following table.

Hardware component	Configuration
Processor	Eight quad-core CPUs that have non-uniform memory access (NUMA)
Memory	32 GB of RAM
Disk	Two local 4-TB disks
Network	Eight network adapters VMQ-supported PCI-SIG-supported

VM3 is used to test applications.

You need to prevent VM3 from synchronizing its clock to Server1.

What should you configure?

- A. NUMA topology
- B. Resource control
- C. resource metering
- D. virtual Machine Chimney
- E. the VLAN ID
- F. Processor Compatibility
- G. the startup order
- H. Automatic Start Action
- I. Integration Services
- J. Port mirroring
- K. Single-root I/O virtualization

Correct Answer: I

Section: (none)

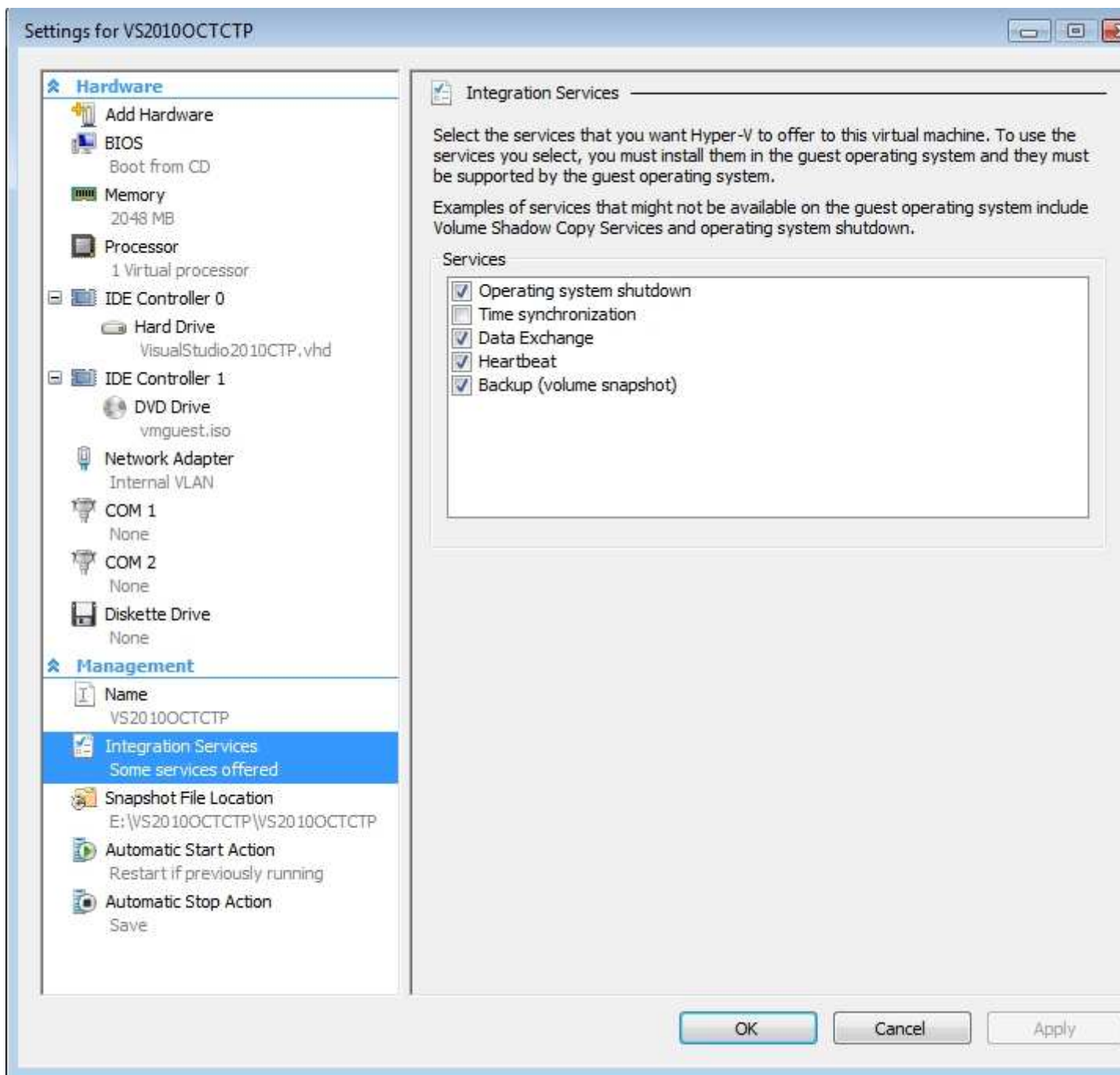
Explanation

Explanation/Reference:

I. Integration Services

Any virtual machine with integration services installed will, by default, synchronize its clock with that of the host operating system it is running on. This functionality can be disabled by viewing the properties of a virtual machine, navigating to the Integration Services section, and unchecking the Time Synchronization box.

<http://www.virtualizationadmin.com/kbase/VirtualizationTips/ServerVirtualization/MicrosoftHyper-VR2Tips/Management/ConfiguringTimeSynchronizationinHyper-V.html>



QUESTION 28

Your network contains a server named Server1 that runs Windows Server 2012. Server1 has the Hyper-V server role installed. Server1 hosts four virtual machines named VM1, VM2, VM3, and VM4. Server1 is configured as shown in the following table.

Hardware component	Configuration
Processor	Eight quad-core CPUs that have non-uniform memory access (NUMA)
Memory	32 GB of RAM
Disk	Two local 4-TB disks
Network	Eight network adapters VMQ-supported PCI-SIG-supported

You need to configure VM4 to track the CPU, memory, and network usage.

What should you configure?

- A. NUMA topology
- B. Resource control
- C. resource metering
- D. Virtual Machine Chimney
- E. the VLAN ID
- F. Processor Compatibility
- G. the startup order
- H. Automatic Start Action
- I. Integration Services
- J. Port mirroring
- K. Single-root I/O virtualization

Correct Answer: C

Section: (none)

Explanation

Explanation/Reference:

C. You can now track and gather data about physical processor, memory, storage, and network usage by specific virtual machines.

http://technet.microsoft.com/en-us/library/hh831410.aspx#BKMK_resourcemetering

<http://blogs.technet.com/b/meamcs/archive/2012/05/28/hyper-v-resource-metering-in-windows-server-2012-server-8-beta.aspx>

QUESTION 29

Your network contains a server named Server1 that runs Windows Server 2012. Server1 has the Hyper-V server role installed. Server1 hosts four virtual machines named VM1, VM2, VM3, and VM4. Server1 is configured as shown in the following table.

Hardware component	Configuration
Processor	Eight quad-core CPUs that have non-uniform memory access (NUMA)
Memory	32 GB of RAM
Disk	Two local 4-TB disks
Network	Eight network adapters VMQ-supported PCI-SIG-supported

You install Windows Server 2012 on VM2 by using Windows Deployment Services (WDS).

You need to ensure that the next time VM2 restarts, you can connect to the WDS server by using PXE.

Which virtual machine setting should you configure for VM2?

- A. NUMA topology
- B. Resource control
- C. Resource metering
- D. Virtual Machine Chimney
- E. The VLAN ID
- F. Processor Compatibility
- G. The startup order

- H. Automatic Start Action
- I. Integration Services
- J. Port mirroring
- K. Single-root I/O virtualization

Correct Answer: G

Section: (none)

Explanation

Explanation/Reference:

G. Configure the BIOS of the computer to enable PXE boot, and set the boot order so that it is booting from the network is first

[http://technet.microsoft.com/en-us/library/cc766320\(v=ws.10\).aspx](http://technet.microsoft.com/en-us/library/cc766320(v=ws.10).aspx)

QUESTION 30

Your network contains an Active Directory domain named contoso.com. The domain contains two domain controllers. The domain controllers are configured as shown in the following table.

Name	Operating system	Operation master role
DC1	Windows Server 2012	<ul style="list-style-type: none">• Domain naming master• Schema master
DC2	Windows Server 2008 R2	<ul style="list-style-type: none">• PDC emulator• RID master• Infrastructure master

In the perimeter network, you install a new server named Server1 that runs a Server Core Installation of Windows Server 2012.

You need to join Server1 to the contoso.com domain.

What should you use?

- A. The New-ADComputer cmdlet
- B. The djoin.exe command
- C. The dsadd.exe command
- D. The Add-Computer cmdlet

Correct Answer: B

Section: (none)

Explanation

Explanation/Reference:

- A. Creates a new Active Directory computer.
- B. **Use djoin for offline join in the perimeter network**
- C. Adds specific types of objects to the directory.
- D. Add the local computer to a domain or workgroup.

<http://technet.microsoft.com/en-us/library/ee617245.aspx>

[http://technet.microsoft.com/en-us/library/ff793312\(v=ws.10\).aspx](http://technet.microsoft.com/en-us/library/ff793312(v=ws.10).aspx)

[http://technet.microsoft.com/en-us/library/cc753708\(v=ws.10\).aspx](http://technet.microsoft.com/en-us/library/cc753708(v=ws.10).aspx)

<http://technet.microsoft.com/en-us/library/hh849798.aspx>

QUESTION 31

Your network contains an Active Directory forest that contains three domains. A group named Group1 is configured as a domain local distribution group in the forest root domain. You plan to grant Group1 read-only access to a shared folder named Share1. Share1 is located in a child domain.

You need to ensure that the members of Group1 can access Share1.

What should you do first?

- A. Convert Group1 to a global distribution group.
- B. Convert Group1 to a universal security group.
- C. Convert Group1 to a universal distribution group.
- D. Convert Group1 to a domain local security group

Correct Answer: B

Section: (none)

Explanation

Explanation/Reference:

- A. Distribution Groups only used for email
- B. **Universal can be used for any domain or forest**
- C. Distribution Groups only used for email
- D. Permissions can be assigned only within the same domain as the parent domain local group

[http://technet.microsoft.com/en-us/library/cc781446\(v=ws.10\).aspx](http://technet.microsoft.com/en-us/library/cc781446(v=ws.10).aspx)

[http://technet.microsoft.com/en-us/library/cc755692\(v=ws.10\).aspx](http://technet.microsoft.com/en-us/library/cc755692(v=ws.10).aspx)

QUESTION 32

Your network contains an Active Directory domain named contoso.com. All domain controllers run Windows Server 2008 R2. One of the domain controllers is named DC1. The network contains a member server named Server1 that runs Windows Server 2012.

You need to promote Server1 to a domain controller by using install from media (IFM).

What should you do first?

- A. Create a system state backup of DC1.
- B. Create IFM media on DC1.
- C. Upgrade DC1 to Windows Server 2012
- D. Run the Active Directory Domain Services Configuration Wizard on Server1.
- E. Run the Active Directory Domain Services Installation Wizard on DC1

Correct Answer: C

Section: (none)

Explanation

Explanation/Reference:

- A. Backs up system state data to be restored
- B.
- C. **Only valid option. You could install AD DS role on Server 1 and run ADDS configuration wizard and add DC to existing domain**
- D. Need to add ADDS role first
- E. Wrong server

<http://technet.microsoft.com/en-us/library/jj574166.aspx>

QUESTION 33

Your network contains an Active Directory domain named contoso.com. The domain contains 100 servers. The servers are contained in an organizational unit (OU) named ServersOU. You need to create a group named Group1 on all of the servers in the domain.

You must ensure that Group1 is added only to the servers.

What should you configure?

- A. a Local Users and Groups preferences setting in a Group Policy linked to the Domain Controllers OU
- B. a Restricted Groups setting in a Group Policy linked to the domain
- C. a Local Users and Groups preferences setting in a Group Policy linked to ServersOU
- D. a Restricted Groups setting in a Group Policy linked to ServersOU

Correct Answer: C

Section: (none)

Explanation

Explanation/Reference:

A. This would add the group to the wrong OU

B. This would effect the whole domain and would effect member of the group

C. Allows you to centrally manage local users and groups on domain member computers and is this is the correct OU for the GPO change

D. Restricted Groups defines what member or groups should exist as part of a group

<http://technet.microsoft.com/en-us/library/cc957640.aspx>

<http://technet.microsoft.com/en-us/library/cc731972.aspx>

QUESTION 34

Your network contains an Active Directory domain named adatum.com. The domain contains three domain controllers. The domain controllers are configured as shown in the following table.

Name	Operating system	Additional server roles
DC1	Windows Server 2008 R2	DNS Server
DC2	Windows Server 2012	DNS Server
DC3	Windows Server 2012	None

DC3 loses network connectivity due to a hardware failure. You plan to remove DC3 from the domain. You log on to DC3.

You need to identify which service location (SRV) records are registered by DC3.

What should you do?

A. Open the %windir%\system32\config\netlogon.dns file.

B. Run dcdiag /test:dns

C. Open the %windir%\system32\dns\backup\adatum.com.dns file.

D. Run ipconfig /displaydns.

Correct Answer: A

Section: (none)

Explanation

Explanation/Reference:

A. Netlogon service creates a log file that contains all the locator resource records and places the log file in the following location

B. Analyzes the state of domain controllers in a forest or enterprise and reports any problems to help in troubleshooting.

C. DNS backup file

D. Used to display current resolver cache content

<http://technet.microsoft.com/en-us/library/cc959303.aspx>

[http://technet.microsoft.com/en-us/library/cc731968\(v=ws.10\).aspx](http://technet.microsoft.com/en-us/library/cc731968(v=ws.10).aspx)

QUESTION 35

Your network contains an Active Directory domain named adatum.com. The domain contains several thousand member servers that run Windows Server 2012. All of the computer accounts for the member servers are in an organizational unit (OU) named ServersAccounts.

Servers are restarted only occasionally.

You need to identify which servers were restarted during the last two days.

What should you do?

A. Run **dsquery computer** and specify the *-stalepwd* parameter.

- B. Run **dsquery server** and specify the **-o** parameter.
- C. Run **Get-ADComputer** and specify the *lastLogon* property.
- D. Run **Get-ADComputer** and specify the *SearchScope* parameter.

Correct Answer: C

Section: (none)

Explanation

Explanation/Reference:

- A. Finds computers in the directory that match search criteria that you specify.
- B. Finds domain controllers according to specified search criteria
- C. **Gets one or more Active Directory computers lastLogondate**
- D. Gets one or more Active Directory computers SearchScope Specifies the scope of an Active Directory search

[http://technet.microsoft.com/en-us/library/cc732952\(v=ws.10\).aspx](http://technet.microsoft.com/en-us/library/cc732952(v=ws.10).aspx)

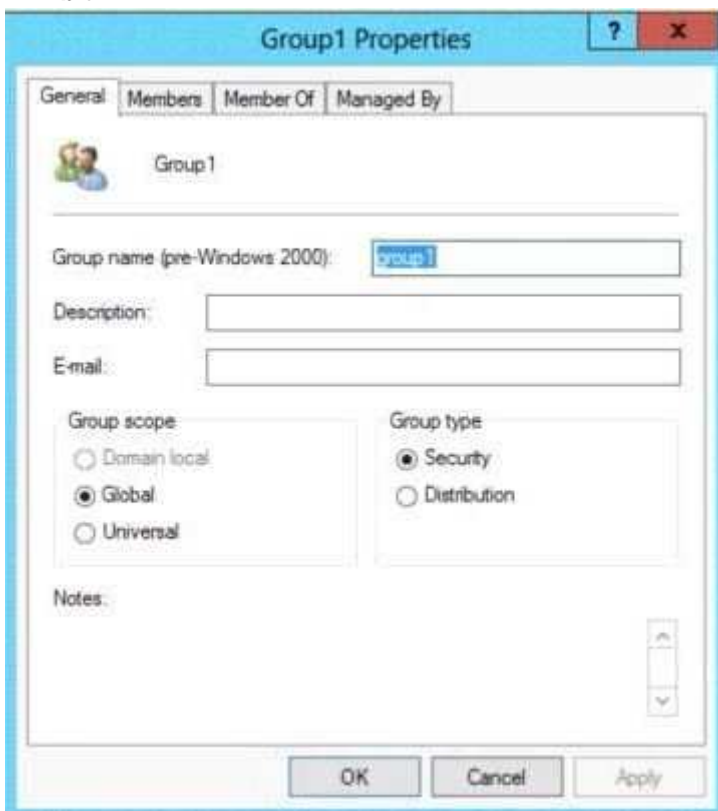
QUESTION 36

Your network contains an Active Directory domain named contoso.com. You log on to a domain controller by using an account named Admin1. Admin1 is a member of the Domain Admins group. You view the properties of a group named Group1 as shown in the exhibit. (Click the Exhibit button.) Group1 is located in an organizational unit (OU) named OU1.

You need to ensure that you can modify the Security settings of Group1 by using Active Directory Users and Computers.

What should you do from Active Directory Users and Computers?

Exhibit:



- A. From the View menu, select Users, Contacts, Groups, and Computers as containers.
- B. Right-click OU1 and select Delegate Control
- C. From the View menu, select Advanced Features.
- D. Right-click contoso.com and select Delegate Control.

Correct Answer: C

Section: (none)

Explanation

Explanation/Reference:

C. From ADUC select view toolbar then select advanced features

<http://searchwindowsserver.techtarget.com/tip/Viewing-advanced-settings-in-Active-Directory-Users-and-Computers>

QUESTION 37

Your network contains an Active Directory domain named contoso.com. The domain contains two domain controllers named DC1 and DC2. You install Windows Server 2012 on a new computer named DC3.

You need to manually configure DC3 as a domain controller.

Which tool should you use?

- A. Server Manager
- B. winrm.exe
- C. Active Directory Domains and Trusts
- D. dcpromo.exe

Correct Answer: A

Section: (none)

Explanation

Explanation/Reference:

A. Use the Add Roles Wizard in Server Manager, followed by the Active Directory Domain Services Configuration Wizard

B. WINRM is the server side service for remote management

C. Used for trust between multiple domains

D. DCPROMO.exe has been deprecated. In Windows Server 2012, if you run dcpromo.exe (without any parameters) from a command prompt, you receive a message directing you to Server Manager

http://technet.microsoft.com/en-us/library/hh472162.aspx#BKMK_GUI

<http://technet.microsoft.com/en-us/library/dd163506.aspx>

<http://technet.microsoft.com/en-us/library/hh831568.aspx>

QUESTION 38

You have a server named Server1 that runs Windows Server 2012.

You need to remove Windows Explorer, Windows Internet Explorer, and all related components and files from Server1.

What should you run on Server1?

- A. Uninstall-WindowsFeature Server-Gui-Mgmt-Infra Remove
- B. Uninstall-WindowsFeature Server-Gui-Shell Remove
- C. msixexec.exe /uninstall iexplore.exe /x
- D. msixexec.exe /uninstall explorer.exe /x

Correct Answer: B

Section: (none)

Explanation

Explanation/Reference:

A. Would be a server core install

B. No IE or taskbar, explorer or control panel

C. Would leave components

D. Would leave components

[http://technet.microsoft.com/en-us/library/hh831786\(v=ws.11\).aspx](http://technet.microsoft.com/en-us/library/hh831786(v=ws.11).aspx)

QUESTION 39

You have a server that runs Windows Server 2012. The server contains the disks configured as shown in the following table.

Disk name	Partition table type	Disk storage type	Unallocated disk space
Disk 0	GPT	Dynamic	2 TB
Disk 1	MBR	Basic	4 TB
Disk 2	GPT	Dynamic	4 TB
Disk 3	GPT	Dynamic	4 TB
Disk 4	MBR	Basic	2 TB

You need to create a volume that can store up to 3 TB of user files.
The solution must ensure that the user files are available if one of the disks in the volume fails.

What should you create?

- A. a mirrored volume on Disk 1 and Disk 4
- B. a mirrored volume on Disk 2 and Disk 3
- C. a RAID-5 volume on Disk 1, Disk 2, and Disk 3
- D. a spanned volume on Disk 0 and Disk 4

Correct Answer: B

Section: (none)

Explanation

Explanation/Reference:

B. I believe it should be disk 2 and 3 and this is a typo. Test may have another option for a storage pool. If so select that.

Disk 2 & Disk 3 are the only Dynamic volumes with enough space.

The *storage pool* is a set of disks on which the Data Protection Manager (DPM) server stores replicas, shadow copies, and transfer logs.

<http://technet.microsoft.com/en-us/library/cc161247.aspx>

QUESTION 40

You have a server named Core1 that has a Server Core Installation of Windows Server 2012. Core1 has the Hyper-V server role installed. Core1 has two network adapters from different third-party hardware vendors.

You need to configure network traffic failover to prevent connectivity loss if a network adapter fails.

What should you use?

- A. New-NetSwitchTeam



<http://www.gratisexam.com/>

- B. Add-NetSwitchTeamMember
- C. Install-Feature
- D. netsh.exe

Correct Answer: A

Section: (none)

Explanation

Explanation/Reference:

A. **Creates a new switch team**

B. Adds a network adapter member to an existing switch team

C. Not a valid cmdlet

D. Network shell (netsh) is a command-line utility that allows you to configure and display the status of various network communications server role

<http://technet.microsoft.com/en-us/library/jj553814.aspx>

[http://technet.microsoft.com/en-us/library/jj553811\(v=wps.620\).aspx](http://technet.microsoft.com/en-us/library/jj553811(v=wps.620).aspx)

[http://technet.microsoft.com/en-us/library/cc725935\(v=ws.10\).aspx](http://technet.microsoft.com/en-us/library/cc725935(v=ws.10).aspx)

Detailed Description

The **New-NetSwitchTeam** cmdlet creates a new switch team. A switch team must have a name for the team and must be

QUESTION 41

You have a server named Server1 that runs Windows Server 2012. You connect three new hard disks to Server1.

You need to create a storage space that contains the three disks.

The solution must meet the following requirements:

- Provide fault tolerance if a single disk fails.
- Maximize the amount of files that can be stored in the storage space.

What should you create?

- A. A simple space
- B. A spanned volume
- C. A mirrored space
- D. A parity space

Correct Answer: D

Section: (none)

Explanation

Explanation/Reference:

A. Stripes data across a set of pool disks, and is not resilient to any disk failures.

B. A spanned volume is a dynamic volume consisting of disk space on more than one physical disk and not fault tolerant

C. Fault tolerant but Not max space

D. **Fault tolerant and better space ratio**

Cannot find a reference that confirms this.

<http://social.technet.microsoft.com/wiki/contents/articles/15198.storage-spaces-overview.aspx>

<http://technet.microsoft.com/en-us/library/cc772180.aspx>

QUESTION 42

You perform a Server Core Installation of Windows Server 2012 on a server named Server1.

You need to add a graphical user interface (GUI) to Server1.

Which tool should you use?

- A. the Add-WindowsFeature cmdlet

- B. the Install-Module cmdlet
- C. the setup.exe command
- D. the Add-WindowsPackage cmdlet

Correct Answer: A

Section: (none)

Explanation

Explanation/Reference:

A. The **Add-WindowsFeature** cmdlet allows you to install specified roles, role services, and features

B. Not a valid cmdlet

C. Using Setup.exe would be a reinstall.

D. Adds a single .cab or .msu file to a Windows image.

<http://technet.microsoft.com/en-us/library/ee662309.aspx>

<http://technet.microsoft.com/en-us/library/hh852164.aspx> Setup.exe will be a re-install.

QUESTION 43

You have a server named Server1 that runs Windows Server 2012. Server1 has five network adapters. Three of the network adapters are connected to a network named LAN1. The two other network adapters are connected to a network named LAN2.

You need to create a network adapter team from the three network adapters connected to LAN 1.

Which tool should you use?

- A. Routing and Remote Access
- B. Network and Sharing Center
- C. Server Manager
- D. Network Load Balancing Manager

Correct Answer: C

Section: (none)

Explanation

Explanation/Reference:

C. **Server Manager**

<http://technet.microsoft.com/en-us/library/hh831648.aspx>

TEAMS

All Teams | 0 total

TASKS ▼

Team Status Teaming Mode Load Balancing Adapters

ADA

Net

Ada

▲

Eth

vEth

QUESTION 44

Your company's security policy states that all of the servers deployed to a branch office must not have the graphical user interface (GUI) installed. In a branch office, a support technician installs a server with a GUI installation of Windows Server 2012 on a new server, and then configures the server as a DHCP server.

You need to ensure that the new server meets the security policy.

You want to achieve this goal by using the minimum amount of Administrative effort.

What should you do?

- A. Reinstall Windows Server 2012 on the server.
- B. From Windows PowerShell, run `Uninstall-WindowsFeature Desktop-Experience`.
- C. From Windows PowerShell, run `Uninstall-WindowsFeature PowerShell-ISE`.
- D. From Server Manager, uninstall the User Interfaces and Infrastructure feature.

Correct Answer: D

Section: (none)

Explanation

Explanation/Reference:

- A. Not least effort
- B. Uninstalls desktop experience not the full GUI
- C. Uninstalls the powershell ISE
- D. **Least effort and removes full GUI**

Desktop Experience: <http://technet.microsoft.com/en-us/library/cc772567.aspx>

User Interfaces and Infrastructure feature: http://blogs.technet.com/b/server_core/archive/2012/05/09/configuring-the-minimal-server-interface.aspx

QUESTION 45

Your network contains three servers. The servers are configured as shown in the following table.

Server name	CPU type	Operating system	Installation type
Server1	x86	32-bit Windows Server 2008 Service Pack 2 (SP2)	Full
Server2	X86	32-bit Windows Server 2008 Service Pack 2 (SP2)	Server Core
Server3	x64	64-bit Windows Server 2008 R2	Full

Your company plans to standardize all of the servers on Windows Server 2012.

You need to recommend an upgrade path for each server.

The solution must meet the following requirements:

- Upgrade the existing operating system whenever possible.
- Minimize hardware purchases.

Which upgrade path should you recommend for each server?

To answer, drag the appropriate upgrade path to each server in the answer area. Each upgrade path may be used once, more than once, or not at all.

<http://technet.microsoft.com/en-us/library/jj134246.aspx>

Select and Place:

Click here to enter text.	Answer Area	
Clean installation on new hardware	Server1	
Clean installation on existing hardware	Server2	
Upgrade on existing hardware	Server3	

Correct Answer:

Click here to enter text.	Answer Area	
Clean installation on new hardware	Server1	Clean installation on new hardware
Clean installation on existing hardware	Server2	Clean installation on new hardware
Upgrade on existing hardware	Server3	Upgrade on existing hardware

Section: (none)

Explanation

Explanation/Reference:

Server 2012 does NOT support x86 hardware.

http://technet.microsoft.com/library/jj134246#BKMK_sysreq

QUESTION 46

Your network contains a file server named Server1 that runs Windows Server 2012. All client computers run Windows 8. Server1 contains a folder named Folder1. Folder1 contains the installation files for the company's desktop applications. A network technician shares Folder1 as Share 1.

You need to ensure that the share for Folder1 is not visible when users browse the network.

What should you do?

- A. From the properties of Folder1, deny the List Folder Contents permission for the Everyone group.
- B. From the properties of Folder1, remove Share1, and then share Folder1 as Share1\$.
- C. From the properties of Folder1, configure the hidden attribute.
- D. From the properties of Share1, configure access-based enumeration

Correct Answer: B

Section: (none)

Explanation

Explanation/Reference:

- A. Will deny everyone list of folder content
- B. **Remove share and re-add using \$ for Hidden/Admin share**
- C. This will hide the physical folder
- D. lists only the files and folders to which they have access when browsing content on the file server

<http://support.microsoft.com/kb/314984>

[http://technet.microsoft.com/en-us/library/cc784710\(v=ws.10\).aspx](http://technet.microsoft.com/en-us/library/cc784710(v=ws.10).aspx)

QUESTION 47

Your network contains an Active Directory domain named contoso.com. The domain contains a server named Server1 that runs Windows Server 2012 and a server named Server2 that runs Windows Server 2008 R2 Service Pack 1 (SP1). Both servers are member servers. On Server2, you install all of the software required to ensure that Server2 can be managed remotely from Server Manager.

You need to ensure that you can manage Server2 from Server1 by using Server Manager.

Which two tasks should you perform on Server2? (Each correct answer presents part of the solution. Choose two.)

- A. Run the systempropertiesremote.exe command
- B. Run the Enable-PsRemoting cmdlet.
- C. Run the Enable-PsSessionConfiguration cmdlet
- D. Run the Configure-SMRemoting.ps1 script
- E. Run the Set-ExecutionPolicy cmdlet.

Correct Answer: DE

Section: (none)

Explanation

Explanation/Reference:

<http://technet.microsoft.com/en-us/library/dd759202.aspx>

SMRemoting = Server Manager Remoting

You must set the execution policy first in order to run PowerShell scripts.

To configure Server Manager remote management by using Windows PowerShell

On the computer that you want to manage remotely, open a Windows PowerShell session with elevated user rights. To do this, click Start, click All Programs, click Accessories, click Windows PowerShell, right-click the Windows PowerShell shortcut, and then click Run as administrator.

In the Windows PowerShell session, type the following, and then press Enter.

Set-ExecutionPolicy -ExecutionPolicy RemoteSigned

Type the following, and then press Enter to enable all required firewall rule exceptions.

Configure-SMRemoting.ps1 -force -enable

QUESTION 48

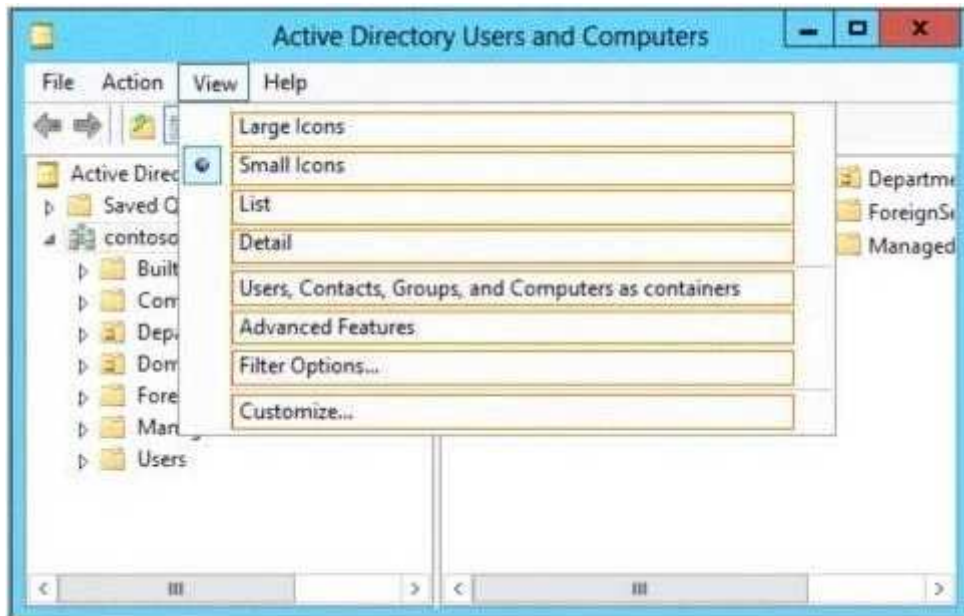
Your network contains an Active Directory domain named contoso.com. The domain contains a print server named Server1 that runs Windows Server 2012. You share several printers on Server1.

You need to ensure that you can view the printer objects associated to Server1 in Active Directory Users and Computers.

Which option should you select?

To answer, select the appropriate option in the answer area.

Hot Area:



Correct Answer:



Section: (none)

Explanation

Explanation/Reference:

Users, Contacts, Groups and Computers as containers shows these items as **OBJECTS** in containers.

<http://support.microsoft.com/kb/235925>

QUESTION 49

Your network contains an Active Directory domain named contoso.com. The domain contains two member servers named Server1 and Server2 that run Windows Server 2012. You log on to Server1.

You need to retrieve the IP configurations of Server2.

Which command should you run from Server1?

- A. winrs -r:server2 ipconfig
- B. winrm get server2

- C. dsquery *-scope base-attr ip, server2
- D. ipconfig > server2.ip

Correct Answer: A

Section: (none)

Explanation

Explanation/Reference:

A. **Windows Remote Shell connects to rserver2 and runs ipconfig**

B. winrm is the server side services for remote mgmt

C.

D. Would output server1 ipconfig info to server2.ip file

<http://windows.commands.com/winrs>

QUESTION 50

Your network contains an Active Directory domain named contoso.com. The network contains a domain controller named DC1 that has to DNS Server server role installed. DC1 has a standard primary DNS zone for contoso.com.

You need to ensure that only client computers in the contoso.com domain will be able to add their records to the contoso.com zone.

What should you do first?

- A. Modify the Security settings of Dc1
- B. Modify the Security settings of the contoso.com zone.
- C. Store the contoso.com zone in Active Directory
- D. Sign the contoso.com zone.

Correct Answer: C

Section: (none)

Explanation

Explanation/Reference:

C. **Active Directory Integrated DNS with Secure Dynamic updates ensures that only Authenticated Users or Computers can create DNS records.**

Secure dynamic updates allow an administrator to control what computers update what names and prevent unauthorized computers from overwriting existing names in DNS.

[http://technet.microsoft.com/en-us/library/cc731204\(v=ws.10\).aspx](http://technet.microsoft.com/en-us/library/cc731204(v=ws.10).aspx)

<http://technet.microsoft.com/en-us/library/cc755193.aspx>

QUESTION 51

Your network contains a single Active Directory domain named contoso.com. The network contains two subnets. The subnets are configured as shown in the following table.

Subnet name	Network IP address
MainOffice	172.16.0.0
Warehouse	192.168.1.0

The network contains a member server named Server1 that runs Windows Server 2012. Server1 has the DHCP Server server role installed. Server1 is configured to lease IP addresses to the two subnets. You discover that computers on the Warehouse subnet that have static IP addresses can communicate with the computers on the MainOffice subnet. Computers on the Warehouse subnet that obtain an IP address automatically can only communicate with other computers on the Warehouse subnet.

You need to ensure that all of the computers on the Warehouse subnet can communicate with the computers on the MainOffice subnet.

Which DHCP option should you configure on Server1?

- A. 003 Router
- B. 011 Resource Location Servers
- C. 020 Nonlocal Source Routing
- D. 019 IP Layer Forwarding

Correct Answer: A

Section: (none)

Explanation

Explanation/Reference:

A. This option is normally used to assign a default gateway to DHCP clients on a subnet. A DHCP client requests this option.

B. This option specifies a list of IP addresses for resource location servers

C. This option specifies whether the DHCP client enables or disables the forwarding at the IP layer of datagrams that contain source routing information and were sent by a non-local host.

D. This option specifies whether the DHCP client should enable or disable forwarding of datagrams at the IP layer.

[http://technet.microsoft.com/en-us/library/dd145324\(v=ws.10\).aspx](http://technet.microsoft.com/en-us/library/dd145324(v=ws.10).aspx)

[http://technet.microsoft.com/en-us/library/ee941211\(v=ws.10\).aspx](http://technet.microsoft.com/en-us/library/ee941211(v=ws.10).aspx)

QUESTION 52

Your network contains an Active Directory domain named contoso.com. The network contains 500 client computers that run Windows 8. All of the client computers connect to the Internet by using a web proxy. You deploy a server named Server1 that runs Windows Server 2012. Server1 has the DNS Server server role installed. You configure all of the client computers to use Server1 as their primary DNS server.

You need to prevent Server1 from attempting to resolve Internet host names for the client computers.

What should you do on Server1?

- A. Configure the Security settings of the contoso.com zone.
- B. Remove all root hints.
- C. Create a primary zone named ".".
- D. Create a primary zone named "root".
- E. Create a primary zone named "GlobalNames".
- F. Create a forwarder that points to 169.254.0.1.
- G. Create a stub zone named "root".
- H. Create a zone delegation for GlobalNames.contoso.com.

Correct Answer: BC

Section: (none)

Explanation

Explanation/Reference:

B. Necessary to remove the default root hints files (List of top level DNS servers on the Internet)

C. Install a root (.) zone on all internal DNS servers to prevent name resolution on the Internet

<http://support.microsoft.com/kb/298148>

QUESTION 53

Your company has a remote office that contains 600 client computers on a single subnet.

You need to select a subnet mask for the network that will support all of the client computers. The solution must minimize the number of unused addresses.

Which subnet mask should you select?

- A. 255.255.252.0

- B. 255.255.254.0
- C. 255.255.255.0
- D. 255.255.255.128

Correct Answer: A

Section: (none)

Explanation

Explanation/Reference:

A. 255.255.252.0

Use the calculator.

Take the number of hosts needed and convert to binary.

600 = 1001011000

Count the # of bits

1001011000 is 10 bits

Subtract 10 from 32 (total bits in a NETMASK) = 22

Convert to binary NETMASK.

11111111.11111111.11111100.00000000

Convert 3rd octet to binary

11111100 = 252

CIDR prefix-length	Dotted-Decimal	# Individual Addresses	# of Classful Networks
/13	255.248.0.0	512 K	8 Bs or 2048 Cs
/14	255.252.0.0	256 K	4 Bs or 1024 Cs
/15	255.254.0.0	128 K	2 Bs or 512 Cs
/16	255.255.0.0	64 K	1 B or 256 Cs
/17	255.255.128.0	32 K	128 Cs
/18	255.255.192.0	16 K	64 Cs
/19	255.255.224.0	8 K	32 Cs
/20	255.255.240.0	4 K	16 Cs
/21	255.255.248.0	2 K	8 Cs
/22	255.255.252.0	1 K	4 Cs
/23	255.255.254.0	512	2 Cs
/24	255.255.255.0	256	1 C
/25	255.255.255.128	128	1/2 C
/26	255.255.255.192	64	1/4 C
/27	255.255.255.224	32	1/8 C

QUESTION 54

Your network contains three servers that run Windows Server 2012. The servers are configured as shown in the following table.

Server name	Server role
Server1	Active Directory Domain Services DHCP Server DNS Server
Server2	Remote Access DHCP Server
Server3	File and Storage Services

Server3 is configured to obtain an IP address automatically.

You need to prevent Server3 from receiving an IP address from Server1.

What should you create on Server1?

- A. A reservation
- B. A filter
- C. A scope option

D. An exclusion

Correct Answer: B

Section: (none)

Explanation

Explanation/Reference:

A. For clients that require a constant IP address

B. **Filter to exclude MAC address of Server3**

C. Range of allowed IP's to be assigned

D. Exclude range of IP's

<http://technet.microsoft.com/en-us/magazine/ff521761.aspx>

[http://technet.microsoft.com/en-us/library/cc726954\(v=ws.10\).aspx](http://technet.microsoft.com/en-us/library/cc726954(v=ws.10).aspx)

QUESTION 55

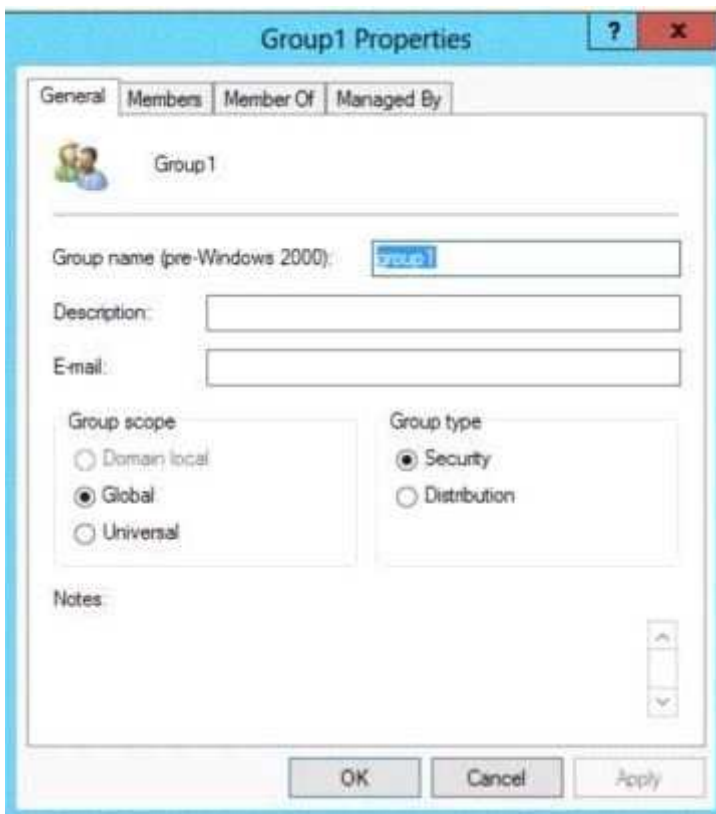
Your network contains an Active Directory domain named contoso.com. You log on to a domain controller by using an account named Admin1. Admin1 is a member of the Domain Admins group. You view the properties of a group named Group1 as shown in the exhibit. (Click the Exhibit button.)

Group1 is located in an organizational unit (OU) named OU1.

You need to ensure that users from Group1 can modify the Security settings of OU1 only.

What should you do from Active Directory Users and Computers?

Exhibit:



A. Modify the Managed By settings on OU1.

B. Right-click contoso.com and select Delegate Control.

C. Right-click OU1 and select Delegate Control.

D. Modify the Security settings of Group1.

Correct Answer: C

Section: (none)

Explanation

Explanation/Reference:

- A. The distinguished name of the user that is assigned to manage this object.
- B. Would delegate control to the whole domain
- C. **Delegates control to only OU1**
- D. Wrong Feature

[http://msdn.microsoft.com/en-us/library/windows/desktop/ms676857\(v=vs.85\).aspx](http://msdn.microsoft.com/en-us/library/windows/desktop/ms676857(v=vs.85).aspx)
<http://technet.microsoft.com/en-us/library/cc732524.aspx>

QUESTION 56

Your network contains an Active Directory forest. The forest contains two domains named contoso.com and corp.contoso.com. The forest contains four domain controllers. The domain controllers are configured as shown in the following table.

Name	Domain	Operating system	Configuration
DC1	contoso.com	Windows Server 2008 R2	PDC emulator Infrastructure master RID master
DC2	contoso.com	Windows Server 2012	Domain naming master Schema master Global catalog
DC3	corp.contoso.com	Windows Server 2008 R2	PDC emulator Infrastructure master RID master
DC4	corp.contoso.com	Windows Server 2012	Global catalog

All domain controllers are DNS servers. In the corp.contoso.com domain, you plan to deploy a new domain controller named DCS.

You need to identify which domain controller must be online to ensure that DCS can be promoted successfully to a domain controller.

Which domain controller should you identify?

- A. DC1
- B. DC2
- C. DC3
- D. DC4

Correct Answer: C

Section: (none)

Explanation

Explanation/Reference:

- A. Wrong Domain
- B. Wrong Domain
- C. **Right domain, RID Master must be online**
- D. Right domain but Not needed to be online

RID Master must be online for newly promoted domain controllers to obtain a local RID pool that is required to advertise or when existing domain controllers have to update their current or standby RID pool allocation.

<http://support.microsoft.com/kb/223346>

QUESTION 57

Your network contains an Active Directory forest named contoso.com. All domain controllers currently run Windows Server 2008 R2. You plan to install a new domain controller named DC4 that runs Windows Server 2012.

The new domain controller will have the following configurations:

- Schema master
- Global catalog server
- DNS Server server role
- Active Directory Certificate Services server role

You need to identify which configurations Administrators by using the Active Directory Installation Wizard.

Which two configurations should you identify? (Each correct answer presents part of the solution. Choose two.)

- A. Transfer the schema master.
- B. Enable the global catalog server.
- C. Install the DNS Server role
- D. Install the Active Directory Certificate Services role.

Correct Answer: AD

Section: (none)

Explanation

Explanation/Reference:

A. **Transfer the schema master.**

D. **Install the Active Directory Certificate Services role.**

<http://technet.microsoft.com/en-us/library/hh831457.aspx>

AD Installation Wizard will automatically install DNS and allows for the option to set it as a global catalog server. ADCS and Schema must be done separately.

Specify domain controller capabilities and site information

☒ Domain Name System (DNS) server

☒ Global Catalog (GC)

☐ Read only domain controller (RODC)

Site name:

Default-First-Site-Name ▼

Type the Directory Services Restore Mode (DSRM) password

Password:

*

Confirm password:

*

QUESTION 58

Your network contains an Active Directory domain named contoso.com. The domain contains two domain controllers. The domain controllers are configured as shown in the following table.

Name	Operating system	Operation master role
DC1	Windows Server 2012	Domain naming master Schema master
DC2	Windows Server 2008 R2	PDC emulator RID master Infrastructure master

You install a new server named Server1 that runs a Server Core Installation of Windows Server 2012.

You need to join Server1 to the contoso.com domain. The solution must minimize administrative effort.

What should you use?

- A. the dsadd.exe command
- B. the New-ADComputer cmdlet
- C. the djoin.exe command
- D. the Add-Computer cmdlet

Correct Answer: D

Section: (none)

Explanation

Explanation/Reference:

- A. Adds specific types of objects to the directory
- B. Creates a new Active Directory computer.
- C. Use djoin for offline join in the perimeter network .
- D. **Add the local computer to a domain or workgroup.**

<http://technet.microsoft.com/en-us/library/ee617245.aspx>

[http://technet.microsoft.com/en-us/library/ff793312\(v=ws.10\).aspx](http://technet.microsoft.com/en-us/library/ff793312(v=ws.10).aspx)

[http://technet.microsoft.com/en-us/library/cc753708\(v=ws.10\).aspx](http://technet.microsoft.com/en-us/library/cc753708(v=ws.10).aspx)

<http://technet.microsoft.com/en-us/library/hh849798.aspx>

QUESTION 59

Your network contains an Active Directory domain named contoso.com. You discover that when you join client computers to the domain manually, the computer accounts are created in the Computers container.

You need to ensure that new computer accounts are created automatically in an organizational unit (OU) named Corp.

Which tool should you use?

- A. net.exe
- B. redircmp.exe
- C. regedit.exe
- D. dsadd.exe

Correct Answer: B

Section: (none)

Explanation

Explanation/Reference:

- A. Used to stop/start protocols
- B. **Redirects the default container for newly created computers to a specified, target organizational unit**
- C. Modify local registry entries
- D. Adds specific types of objects to the directory

<http://support.microsoft.com/kb/324949/en-us>

<http://technet.microsoft.com/en-us/library/bb490949.aspx>

[http://technet.microsoft.com/en-us/library/cc770619\(v=ws.10\).aspx](http://technet.microsoft.com/en-us/library/cc770619(v=ws.10).aspx)

[http://technet.microsoft.com/en-us/library/cc753708\(v=ws.10\).aspx](http://technet.microsoft.com/en-us/library/cc753708(v=ws.10).aspx)

QUESTION 60

Your network contains two Active Directory forests named adatum.com and contoso.com. Both forests contain multiple domains. A two-way trust exists between the forests. The contoso.com domain contains a domain local security group named Group1. Group1 contains contoso\user1 and adatum\user1.

You need to ensure that Group1 can only contain users from the contoso.com domain.

Which three actions should you perform?

To answer, move three actions from the list of actions to the answer area and arrange them in the correct order.

Select and Place:

Remove adatum\user1 from Group1.

Convert Group1 to a distribution group.

Convert Group1 to a global group.

Remove contoso\user1 from Group1.

Convert Group1 to a universal group.

Correct Answer:

Convert Group1 to a distribution group.

Remove contoso\user1 from Group1.

Remove adatum\user1 from Group1.

Convert Group1 to a universal group.

Convert Group1 to a global group.

Section: (none)

Explanation

Explanation/Reference:

[http://technet.microsoft.com/en-us/library/cc755692\(v=ws.10\).aspx](http://technet.microsoft.com/en-us/library/cc755692(v=ws.10).aspx)

QUESTION 61

You have a server named Server2 that runs Windows Server 2012. Server2 has the Hyper-V server role installed.

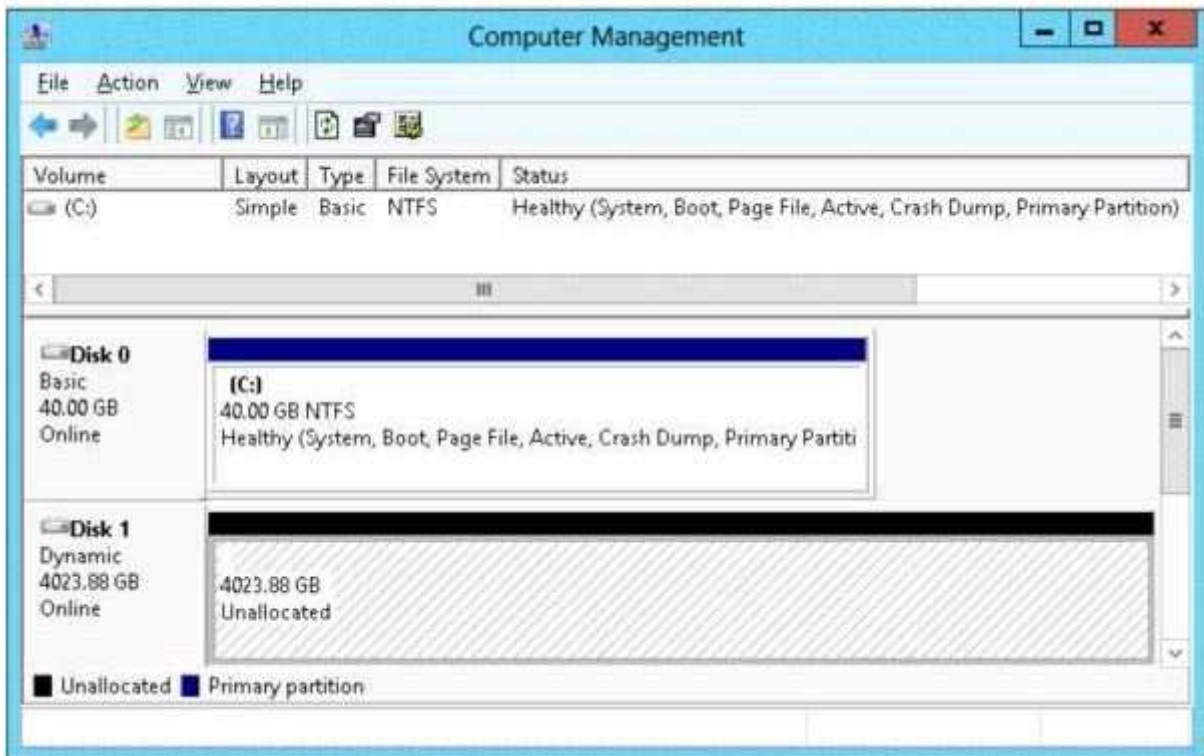
The disks on Server2 are configured as shown in the exhibit. (Click the Exhibit button.)

You create a virtual machine on Server2 named VM1.

You need to ensure that you can configure a pass-through disk for VM1.

What should you do?

Exhibit:



- A. Convert Disk 1 to a MBR disk.
- B. Convert Disk 1 to a basic disk.
- C. Take Disk 1 offline.
- D. Create a partition on Disk 1.

Correct Answer: C

Section: (none)

Explanation

Explanation/Reference:

C. The pass-through disk must be offline.

<http://blogs.technet.com/b/askcore/archive/2008/10/24/configuring-pass-through-disks-in-hyper-v.aspx>

QUESTION 62

You have a server named Server1 that runs Windows Server 2012. Server1 has the Hyper-V server role installed. Server1 is connected to two Fibre Channel SANs and is configured as shown in the following table.

Host bus adapter (HBA) name	Fibre Channel SAN name
HBA1	SAN1
HBA2	SAN2
HBA3	SAN1
HBA4	SAN2

You have a virtual machine named VM1.

You need to configure VM1 to connect to SAN1.

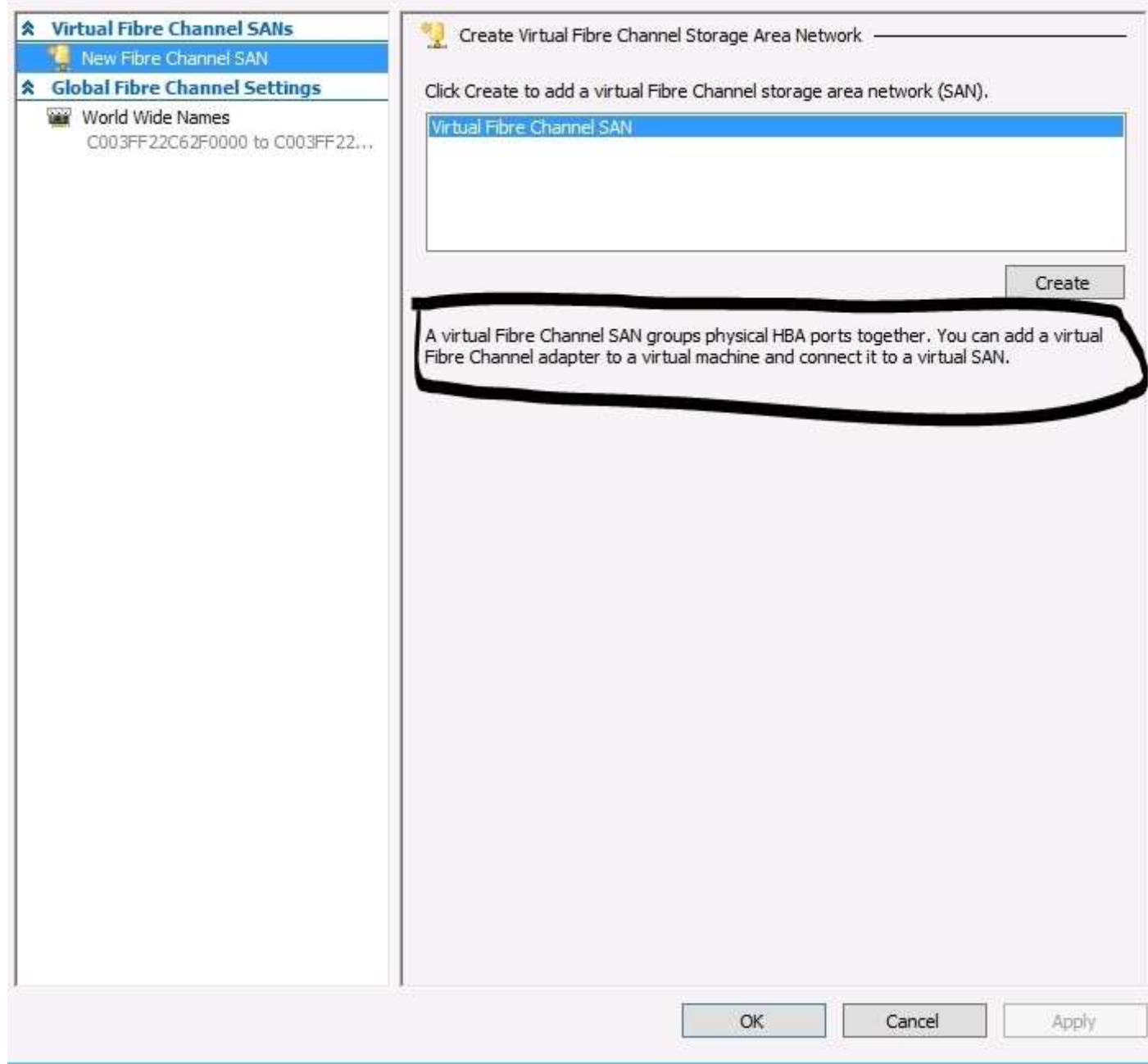
What should you do first?

- A. Add one HBA
- B. Create a Virtual Fibre Channel SAN.
- C. Create a Hyper-V virtual switch.
- D. Configure network adapter teaming.

Correct Answer: B
Section: (none)
Explanation

Explanation/Reference:

<http://technet.microsoft.com/en-us/library/hh831413.aspx>



QUESTION 63

You have a file server named Server1 that runs Windows Server 2012.

Server1 has following hardware configurations:

- 16 GB of RAM
- A single quad-core CPU
- Three network teams that have two network adapters each

You add additional CPUs and RAM to Server1.

You repurpose Server1 as a virtualization host.

You install the Hyper-V server role on Server1.

You need to create four external virtual switches in Hyper-V.

Which cmdlet should you run first?

- A. **Set-NetAdapter**
- B. **Add-NetLbfo TeamNic**
- C. **Add-VMNetworkAdapter**
- D. **Remove-NetLbfo Team**

Correct Answer: D

Section: (none)

Explanation

Explanation/Reference:

- A. Sets adapter properties
- B. Add new interface to NIC Team
- C. Adds vadapter to vm
- D. **You will need to break the NIC Team(s).**

You need 4 virtual switches but currently only have 3 teams available. You would need to break a team first.

[http://technet.microsoft.com/en-us/library/jj130875\(v=wps.620\).aspx](http://technet.microsoft.com/en-us/library/jj130875(v=wps.620).aspx)
[http://technet.microsoft.com/en-us/library/jj130850\(v=wps.620\).aspx](http://technet.microsoft.com/en-us/library/jj130850(v=wps.620).aspx)
[http://technet.microsoft.com/en-us/library/hh848564\(v=wps.620\).aspx](http://technet.microsoft.com/en-us/library/hh848564(v=wps.620).aspx)
[http://technet.microsoft.com/en-us/library/jj130848\(v=wps.620\).aspx](http://technet.microsoft.com/en-us/library/jj130848(v=wps.620).aspx)
<http://technet.microsoft.com/en-us/library/jj130848.aspx>

QUESTION 64

Your network contains a server named Server1 that runs Windows Server 2012. Server1 has the Hyper-V server role installed. Server1 hosts four virtual machines named VM1, VM2, VM3, and VM4. Server1 is configured as shown in the following table.

Hardware component	Configuration
Processor	Eight quad-core CPUs that have non-uniform memory access (NUMA)
Memory	32 GB of RAM
Disk	Two local 4-TB disks
Network	Eight network adapters VMQ-supported PCI-SIG-supported

You need to ensure that VM1 can use more CPU time than the other virtual machines when the CPUs on Server1 are under a heavy load.

What should you configure?

- A. NUMA topology
- B. Resource control
- C. resource metering
- D. Virtual Machine Chimney
- E. The VLAN ID
- F. Processor Compatibility
- G. The startup order
- H. Automatic Start Action

- I. Integration Services
- J. Port mirroring
- K. Single-root I/O virtualization

Correct Answer: B

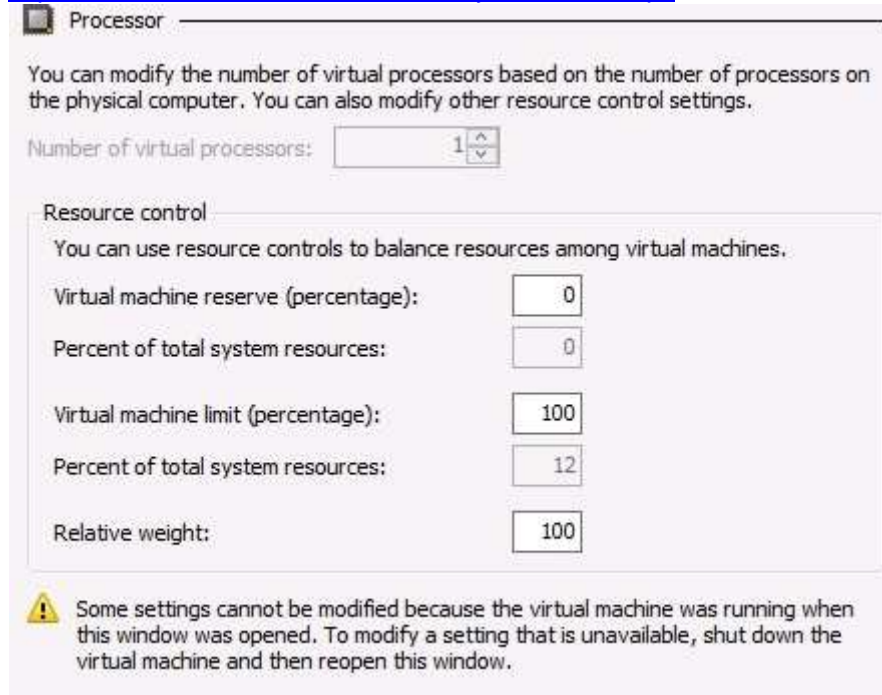
Section: (none)

Explanation

Explanation/Reference:

B. Resource controls provide you with several ways to control the way that Hyper-V allocates resources to virtual machine

<http://technet.microsoft.com/en-us/library/cc742470.aspx>



Processor

You can modify the number of virtual processors based on the number of processors on the physical computer. You can also modify other resource control settings.

Number of virtual processors:

Resource control

You can use resource controls to balance resources among virtual machines.


Virtual machine reserve (percentage):

Percent of total system resources:

Virtual machine limit (percentage):

Percent of total system resources:

Relative weight:

 Some settings cannot be modified because the virtual machine was running when this window was opened. To modify a setting that is unavailable, shut down the virtual machine and then reopen this window.

QUESTION 65

Your network contains a server named Server1 that runs Windows Server 2012. Server1 has the Hyper-V server role installed. Server1 hosts four virtual machines named VM1, VM2, VM3, and VM4. Server1 is configured as shown in the following table.

Hardware component	Configuration
Processor	Eight quad-core CPUs that have non-uniform memory access (NUMA)
Memory	32 GB of RAM
Disk	Two local 4-TB disks
Network	Eight network adapters VMQ-supported PCI-SIG-supported

VM2 sends and receives large amounts of data over the network.

You need to ensure that the network traffic of VM2 bypasses the virtual switches of the parent partition.

What should you configure?

- A. NUMA topology
- B. Resource control

- C. Resource metering
- D. Virtual Machine Chimney
- E. The VLAN ID
- F. Processor Compatibility
- G. The startup order
- H. Automatic Start Action
- I. Integration Services
- J. Port mirroring
- K. Single-root I/O virtualization

Correct Answer: K

Section: (none)

Explanation

Explanation/Reference:

K. **Single-root I/O Virtualization (SR-IOV)** maximizes network throughput while minimizing network latency as well as the CPU overhead required for processing network traffic.

<http://technet.microsoft.com/en-us/library/hh831410.aspx>

▲ SR-IOV

This new feature allows you to assign a network adapter that supports **single-root** I/O virtualization (SR-IOV) directly to

What value does this change add?

Use of SR-IOV maximizes network throughput while minimizing network latency as well as the CPU overhead required for

What works differently?

You can provide a virtual machine with direct connectivity to a physical network adapter. For more information, see [Hyper-V SR-IOV](#)

QUESTION 66

Your network contains an Active Directory domain named contoso.com. The domain contains a domain controller named DC1 that runs Windows Server 2012.

You need to configure a central store for the Group Policy Administrative Templates.

What should you do on DC1?

- A. From Server Manager, create a storage pool.
- B. From Windows Explorer, copy the PolicyDefinitions folder to the SYSVOL\contoso.com\policies folder.
- C. From Server Manager, add the Group Policy Management feature
- D. From Windows Explorer, copy the PolicyDefinitions folder to the NETLOGON share.

Correct Answer: B

Section: (none)

Explanation

Explanation/Reference:

- A. Create Disk Storage Pool
- B. **PolicyDefinitions folder in SYSVOL**
- C. Group Policy Management is a console for GPO Mgmt
- D. Folder is for logon scripts

To create a Central Store for .admx and .adml files, create a folder that is named PolicyDefinitions in the following location:

\\FQDMSYSVOL\FQDMpolicies

Note FQDN is a fully qualified domain name.

For example, to create a Central Store for the Test.Microsoft.com domain, create a PolicyDefinitions folder in the following location:
\\Test.Microsoft.Com\SYSVOL\Test.Microsoft.Com\Policies

<http://support.microsoft.com/kb/929841>

QUESTION 67

You install Windows Server 2012 on a standalone server named Server1. You configure Server1 as a VPN server.

You need to ensure that client computers can establish PPTP connections to Server1.

Which two firewall rules should you create? (Each correct answer presents part of the solution. Choose two.)

- A. An inbound rule for protocol 47
- B. An outbound rule for protocol 47
- C. An inbound rule for TCP port 1723
- D. An inbound rule for TCP port 1701
- E. An outbound rule for TCP port 1723
- F. An outbound rule for TCP port 1701

Correct Answer: AC

Section: (none)

Explanation

Explanation/Reference:

- A. **An inbound rule for protocol 47**
- C. **An inbound rule for TCP port 1723**

To enable VPN tunnels between individual host computers or entire networks that have a firewall between them, you must open the following ports:

GRE: protocol 47
PPTP: port 1723

To allow PPTP tunnel maintenance traffic, open TCP 1723.
To allow PPTP tunneled data to pass through router, open Protocol ID 47.

<http://www.windowsitpro.com/article/pptp/which-ports-do-you-need-to-open-on-a-firewall-to-allow-pptp-and-l2tp-over-ipsec-vpn-tunnels--46811>

If you use a personal firewall or a broadband router, or if there are routers or firewalls between the VPN client and the VPN server, the following ports and protocol must be enabled for PPTP on all firewalls and routers that are between the VPN client and the VPN server:

Client ports	Server port	Protocol
1024-65535/TCP	1723/TCP	PPTP

Additionally, you must enable IP PROTOCOL 47 (GRE).
<http://support.microsoft.com/kb/314076/en-us>

QUESTION 68

Your network contains an Active Directory domain named adatum.com. The computer accounts for all member servers are located in an organizational unit (OU) named Servers. You link a Group Policy object (GPO) to the Servers OU.

You need to ensure that the domain's Backup Operators group is a member of the local Backup Operators group on each member server.

The solution must not remove any groups from the local Backup Operators groups.

What should you do?

- A. Add a restricted group named adatum\Backup Operators. Add Backup Operators to the This group is a member of list.
- B. Add a restricted group named adatum\Backup Operators. Add Backup Operators to the Members of this group list.
- C. Add a restricted group named Backup Operators. Add adatum\Backup Operators to the This group is a member of list.
- D. Add a restricted group named Backup Operators. Add adatum\Backup Operators to the Members of this group list.

Correct Answer: A

Section: (none)

Explanation

Explanation/Reference:

- A. "This group is a member of list" specifies which other groups the restricted group should belong to
- B. Needs to be added to member of list
- C. Wrong group
- D. Wrong group

<http://technet.microsoft.com/en-us/library/cc957640.aspx>

QUESTION 69

Your network contains an Active Directory domain named contoso.com. All servers run Windows Server 2012. An application named Appl.exe is installed on all client computers. Multiple versions of Appl.exe are installed on different client computers. Appl.exe is digitally signed.

You need to ensure that only the latest version of Appl.exe can run on the client computers.

What should you create?

- A. An application control policy packaged app rule
- B. A software restriction policy certificate rule
- C. An application control policy Windows Installer rule
- D. An application control policy executable rule

Correct Answer: D

Section: (none)

Explanation

Explanation/Reference:

- A. A publisher rule for a Packaged app is based on publisher, name and version
- B. You can create a certificate rule that identifies software and then allows or does not allow the software to run, depending on the security level.
- C. For .msi or .msp
- D. **For .exe and can be based on version**

<http://technet.microsoft.com/en-us/library/dd759068.aspx>

<http://technet.microsoft.com/en-us/library/hh994588.aspx>

<http://www.grouppolicy.biz/2012/08/how-manage-published-a-k-a-metro-apps-in-windows-8-using-group-policy/>

http://technet.microsoft.com/en-us/library/hh994597.aspx#BKMK_Cert_Rules

QUESTION 70

Your network contains an Active Directory domain named contoso.com. All domain controllers run Windows Server 2012.

You need to ensure that the local Administrator account on all computers is renamed to L_Admin.

Which Group Policy settings should you modify?

- A. Security Options
- B. User Rights Assignment
- C. Restricted Groups
- D. Preferences

Correct Answer: A

Section: (none)

Explanation

Explanation/Reference:

A. Allows configuration of computers

B. User Rights Assignment policies determines which users or groups have logon rights or privileges on the computer

C. Restricted Groups defines what member or groups should exist as part of a group

D. With Preferences, local and domain accounts can be added to a local group without affecting the existing members of the group

[http://technet.microsoft.com/en-us/library/cc747484\(v=ws.10\).aspx](http://technet.microsoft.com/en-us/library/cc747484(v=ws.10).aspx)

In Group Policy Object Editor, click Computer Configuration, click Windows Settings, click Security Settings, click Local Policies, and then click Security Options.

In the details pane, double-click Accounts: Rename administrator account.

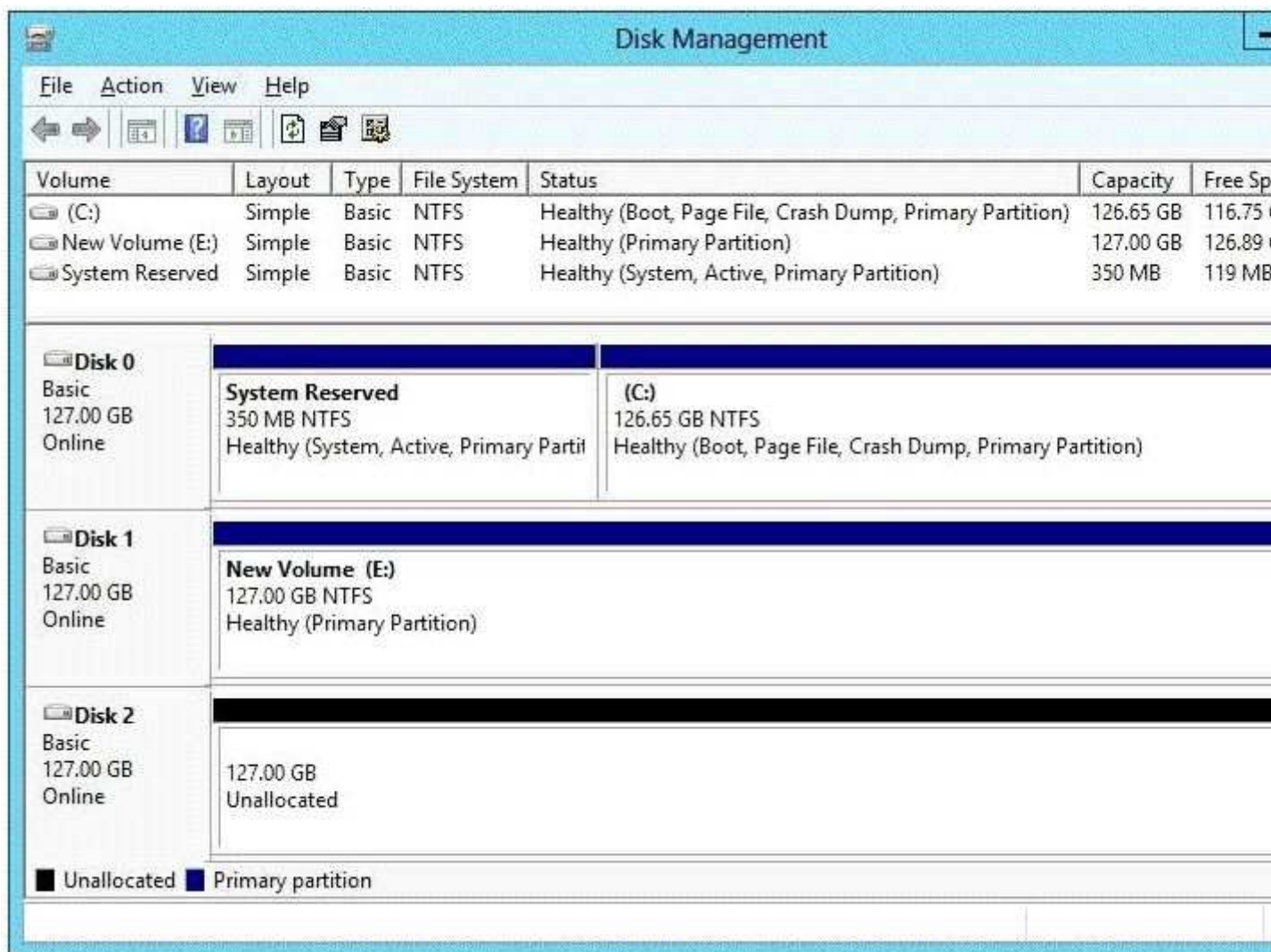
QUESTION 71

You have a server that runs Windows Server 2012. The disks on the server are configured as shown in the exhibit. (Click the Exhibit button.)

You need to create a storage pool that contains Disk 1 and Disk 2.

What should you do first?

Exhibit:



- A. Delete volume E
- B. Convert Disk 1 and Disk 2 to dynamic disks
- C. Convert Disk 1 and Disk 2 to GPT disks
- D. Create a volume on Disk 2

Correct Answer: A

Section: (none)

Explanation

Explanation/Reference:

A. **Storage Pools use unallocated space**

<http://technet.microsoft.com/en-us/library/ff399688.aspx>

QUESTION 72

You have a server named Server1 that runs Windows Server 2012. You add a 4-TB disk named Disk 5 to Server1.

You need to ensure that you can create a 3-TB volume on Disk 5.

What should you do?

- A. Create a storage pool.
- B. Convert the disk to a dynamic disk.
- C. Create a VHD, and then attach the VHD.

D. Convert the disk to a GPT disk.

Correct Answer: D

Section: (none)

Explanation

Explanation/Reference:

D. MBR max is 2TB, the disk must be GPT

<http://msdn.microsoft.com/en-us/library/windows/hardware/gg463525.aspx>

QUESTION 73

You have a server named Server1 that has a Server Core installation of Windows Server 2008 R2. Server1 has the DHCP Server server role and the File Server server role installed.

You need to upgrade Server1 to Windows Server 2012 with the graphical user interface (GUI).

The solution must meet the following requirements:

- Preserve the server roles and their configurations.
- Minimize Administrative effort.

What should you do?

- A. On Server1, run setup.exe from the Windows Server 2012 installation media and select Server with a GUI.
- B. Start Server1 from the Windows Server 2012 installation media and select Server Core Installation. When the installation is complete, add the Server Graphical Shell feature.
- C. Start Server1 from the Windows Server 2012 installation media and select Server with a GUI.
- D. On Server1, run setup.exe from the Windows Server 2012 installation media and select Server Core Installation. When the installation is complete, add the Server Graphical Shell feature

Correct Answer: D

Section: (none)

Explanation

Explanation/Reference:

A. Server is on 2008 R2 core, must install 2012 core and then GUI

B. Not least effort

C. Not least effort

D. Upgrade to 2012 and install GUI shell

Upgrades that switch from a Server Core installation to the Server with a GUI mode of Windows Server 2012 in one step (and vice versa) are not supported. However, after upgrade is complete, Windows Server 2012 allows you to switch freely between Server Core and Server with a GUI modes. For more information about these installation options, how to convert between them, and how to use the new Minimal Server Interface and Features on Demand, see <http://technet.microsoft.com/library/hh831786>.

<http://technet.microsoft.com/en-us/library/jj574204.aspx>

QUESTION 74

Your network contains two servers named Server1 and Server2 that run Windows Server 2012.

You need to install the Remote Desktop Services server role on Server2 remotely from Server1.

Which tool should you use?

- A. The dsadd.exe command
- B. The Server Manager console
- C. The Remote Desktop Gateway Manager console
- D. The Install-RemoteAccess cmdlet

Correct Answer: B

Section: (none)

Explanation

Explanation/Reference:

A. Adds specific types of objects to the directory

B. You can manage remote server by Server Manager and install roles/features

C. Remote Desktop Gateway (RD Gateway) is a role service that enables authorized remote users to connect to resources on an internal corporate or private network, from any Internet-connected device that can run the Remote Desktop Connection (RDC) client.

D. Performs prerequisite checks for DirectAccess (DA) to ensure that it can be installed, installs DA for remote access (RA) (includes management of remote clients) or for management of remote clients only, and installs VPN (both Remote Access VPN and site-to-site VPN).

[http://technet.microsoft.com/en-us/library/cc753708\(v=ws.10\).aspx](http://technet.microsoft.com/en-us/library/cc753708(v=ws.10).aspx)

<http://technet.microsoft.com/en-us/library/hh831456.aspx>

<http://technet.microsoft.com/en-us/library/cc725706.aspx>

[http://technet.microsoft.com/en-us/library/hh918408\(v=wps.620\).aspx](http://technet.microsoft.com/en-us/library/hh918408(v=wps.620).aspx)

QUESTION 75

You have a server named Server1 that runs a full installation of Windows Server 2012.

You need to uninstall the graphical user interface (GUI) on Server1.

You must achieve this goal by using the minimum amount of Administrative effort.

What should you do?

A. Reinstall Windows Server 2012 on the server.

B. From Server Manager, uninstall the User Interfaces and Infrastructure feature.

C. From Windows PowerShell, run Uninstall-WindowsFeature PowerShell-ISE

D. From Windows PowerShell, run Uninstall-WindowsFeature Desktop-Experience.

Correct Answer: B

Section: (none)

Explanation

Explanation/Reference:

A. Not least effort

B. Quick and Easy

C. Uninstalls PS-ISE

D. Doesn't remove all GUI components

<http://www.petri.co.il/switching-gui-server-core-windows-server-2012.htm>

QUESTION 76

Your network contains a Windows Server 2012 image named Server12.wim. Server12.wim contains the images shown in the following table.

Index number	Image name
1	Windows Server 2012 Server Standard Core
2	Windows Server 2012 Server Standard
3	Windows Server 2012 Server Datacenter Core
4	Windows Server 2012 Server Datacenter

Server12.wim is located in C:\.

You need to enable the Windows Server Migration Tools feature in the Windows Server 2012 Server Datacenter image.

You want to achieve this goal by using the minimum amount of Administrative effort.

Which command should you run first?

A. `dism.exe /mount-wim /wimfile:c:\Server12.wim /index:4 /mountdir:c:\mount`

- B. imagex.exe /capture c: c:\Server12.wim "windows server 2012server datacenter"
- C. dism.exe /image: c:\Server12.wim /enable-feature /featurename: servermigration
- D. imagex.exe /apply c:\Server12.wim 4 c:\

Correct Answer: A

Section: (none)

Explanation

Explanation/Reference:

A. **Mounts the image before making any changes**

B. imagex /capture creates windows images .wim

C. You need to mount the image first

D. imagex /apply applies image to drive

[http://technet.microsoft.com/en-us/library/cc749447\(v=ws.10\).aspx](http://technet.microsoft.com/en-us/library/cc749447(v=ws.10).aspx)

[http://technet.microsoft.com/en-us/library/dd744382\(v=ws.10\).aspx](http://technet.microsoft.com/en-us/library/dd744382(v=ws.10).aspx)

QUESTION 77

Your network contains an Active Directory domain named contoso.com. The domain contains two servers named Server1 and Server2 that run Windows Server 2012.

You create a security template named Template1 by using the Security Templates snap-in.

You need to apply Template1 to Server2.

Which tool should you use?

- A. Security Templates
- B. Computer Management
- C. Security Configuration and Analysis
- D. System Configuration

Correct Answer: C

Section: (none)

Explanation

Explanation/Reference:

A. Template was already created - Provide standard security option to use in security policies

B. Needs to be applied at the GP level

C. **Security templates are inactive until imported into a Group Policy object or to Security Configuration and Analysis**

D. Tool to ID windows problems

<http://technet.microsoft.com/en-us/library/jj730960.aspx>

<http://windows.microsoft.com/en-us/windows-vista/using-system-configuration>

QUESTION 78

Your network contains an Active Directory domain named contoso.com. The domain contains a server named Server1 that runs Windows server 2012.

You create a group Managed Service Account named gservice1.

You need to configure a service named Service1 to run as the gservice1 account.

How should you configure Service1?

- A. From the Services console configure the General settings.
- B. From Windows PowerShell, run **Set-Service** and specify the *-PassThrough* parameter.
- C. From a command prompt, run **sc.exe** and specify the *config* parameter.
- D. From the Services console, configure the Recovery settings.

Correct Answer: C

Section: (none)

Explanation

Explanation/Reference:

- A. General settings only allow you to stop, start and set type/parameters
- B. Set-Service provides a way for you to change the Description, StartupType, or DisplayName of a service
- C. **Modifies service configuration**
- D. Sets the response/action on service failure

SC.EXE

DESCRIPTION:

Modifies a service entry in the registry and Service Database.

USAGE:

sc <server> config [service name] <option1> <option2>...

OPTIONS:

NOTE: The option name includes the equal sign.

A space is required between the equal sign and the value.

type= <own|share|interact|kernel|filesystem|rec|adapt>

start= <boot|system|auto|demand|disabled|delayed-auto>

error= <normal|severe|critical|ignore>

binPath= <BinaryPathName to the .exe file>

group= <LoadOrderGroup>

tag= <yes|no>

depend= <Dependencies(separated by / (forward slash))>

obj= <AccountName|ObjectName>

DisplayName= <display name>

password= <password>

<http://windows.microsoft.com/en-us/windows-vista/using-system-configuration>

<http://technet.microsoft.com/en-us/library/ee176963.aspx>

[http://technet.microsoft.com/en-us/library/cc990290\(v=ws.10\).aspx](http://technet.microsoft.com/en-us/library/cc990290(v=ws.10).aspx)

[http://technet.microsoft.com/en-us/library/cc738230\(v=ws.10\).aspx](http://technet.microsoft.com/en-us/library/cc738230(v=ws.10).aspx)

QUESTION 79

Your network contains an Active Directory domain named contoso.com. The domain contains 100 user accounts that reside in an organizational unit (OU) named OU1.

You need to ensure that user named User1 can link and unlink Group Policy objects (GPOs) to OU1. The solution must minimize the number of permissions assigned to User1.

What should you do?

- A. Run the Delegation of Control Wizard on the Policies container.
- B. Run the **Set-GPPermission** cmdlet.
- C. Run the Delegation of Control Wizard on OU1.
- D. Modify the permissions on the User1 account.

Correct Answer: C

Section: (none)

Explanation

Explanation/Reference:

A. Not minimum permissions

B. Grants a level of permissions to a security principal for one GPO or all the GPOs in a domain

C. **Minimizes delegated permission to a single OU**

D. Will not allow GPO changes to the OU

<http://technet.microsoft.com/en-us/library/ee461038.aspx>

<http://technet.microsoft.com/en-us/library/cc732524.aspx>

QUESTION 80

You have a server named Server1 that runs Windows Server 2012.

Server1 has two dual-core processors and 16 GB of RAM.

You install the Hyper-V server role in Server1.

You plan to create two virtual machines on Server1.

You need to ensure that both virtual machines can use up to 8 GB of memory. The solution must ensure that both virtual machines can be started simultaneously.

What should you configure on each virtual machine?

- A. Dynamic Memory
- B. NUMA topology
- C. Memory weight
- D. Resource Control

Correct Answer: A

Section: (none)

Explanation

Explanation/Reference:

A. **Dynamic Memory adjusts the amount of memory available to a virtual machine, based on changes in memory demand and values that you specify**

B. Used for high performance apps like SQL

C. Provides Hyper-V with a way to determine how to distribute memory among virtual machines if there is not enough physical memory available in the computer to give every virtual machine its requested amount of memory.

D. Resource controls provide you with several ways to control the way that Hyper-V allocates resources to virtual machine

[http://technet.microsoft.com/en-us/library/ff817651\(v=ws.10\).aspx](http://technet.microsoft.com/en-us/library/ff817651(v=ws.10).aspx)

<http://technet.microsoft.com/en-us/library/hh831410.aspx>

<http://technet.microsoft.com/en-us/library/cc742470.aspx>

QUESTION 81

You have a server named Server1 that runs Windows Server 2012.

You promote Server1 to domain controller.

You need to view the service location (SVR) records that Server1 registers on DNS.

What should you do on Server1?

- A. Open the Srv.sys file.
- B. Open the Netlogon.dns file.
- C. Run ipconfig/displaydns.
- D. Run Get-DnsServerDiagnostics.

Correct Answer: B

Section: (none)

Explanation

Explanation/Reference:

A. Timestamp server driver

B. **Netlogon service creates a log file that contains all the locator resource records stored in netlogon.**

C. used to display current resolver cache content

D. Gets DNS event logging details

<http://technet.microsoft.com/en-us/library/cc959303.aspx>

[http://technet.microsoft.com/en-us/library/jj649883\(v=wps.620\).aspx](http://technet.microsoft.com/en-us/library/jj649883(v=wps.620).aspx)

QUESTION 82

Your network contains an Active Directory domain named contoso.com. The domain contains a server named Server1 that runs Windows server 2012 and has the Hyper-V server role installed.

You have a virtual machine named VM1. VM1 has a snapshot.

You need to modify the Snapshot File Location of VM1.

What should you do first?

- A. Copy the snapshot file
- B. Pause VM1
- C. Shut down VM1
- D. Delete the snapshot

Correct Answer: D

Section: (none)

Explanation

Explanation/Reference:

D. Delete the snapshot

[http://technet.microsoft.com/en-us/library/dd560637\(v=WS.10\).aspx](http://technet.microsoft.com/en-us/library/dd560637(v=WS.10).aspx)

QUESTION 83

Your network contains an Active Directory forest. The forest functional level is Windows Server 2012. The forest contains a single domain. The domain contains a member server named Server1. Server1 runs Windows Server 2012.

You purchase a network scanner named Scanner1 that supports Web Services on Devices (WSD).

You need to share the network scanner on Server1.

Which server role should you install on Server1?

- A. Print and Document Services
- B. File and Storage Services
- C. Web Server (IIS)
- D. Fax Server

Correct Answer: A

Section: (none)

Explanation

Explanation/Reference:

A. Can share printers, scanners and fax

<http://technet.microsoft.com/en-us/library/hh831468.aspx>

QUESTION 84

Your network contains an Active Directory domain named contoso.com. The domain contains a domain controller named DC5. DC5 has a Server Core Installation of Windows Server 2012.

You need to uninstall Active Directory from DC5 manually.

Which tool should you use?

- A. the Remove-WindowsFeature cmdlet

- B. the dsain.exe command
- C. the ntdsutil.exe command
- D. the Remove-ADComputer cmdlet

Correct Answer: C

Section: (none)

Explanation

Explanation/Reference:

- A. Removes Roles and Features to remove DC use Uninstall-addsdomaincontroller
- B. Exposes Active Directory data that is stored in a snapshot or backup as a Lightweight Directory Access Protocol (LDAP) server
- C. Can manually remove Active Directory
- D. Removes AD computer object

<http://technet.microsoft.com/en-us/library/ee662310.aspx>

<http://support.microsoft.com/kb/216498>

<http://technet.microsoft.com/en-us/library/ee617250.aspx>

QUESTION 85

Your network contains an Active Directory forest named contoso.com. The forest contains a child domain named europe.contoso.com. The europe.contoso.com child domain contains a server named Server1 that runs Windows Server 2012.

You install the DHCP Server server role on Server1.

You have access to the administrative accounts shown in the following table.

Account name	Account location	Member of
Admin1	Server1	Server1\Administrators
Admin2	Europe.contoso.com	Europe\Domain Admins
Admin3	Europe.contoso.com	Europe\Administrators
Admin4	Contoso.com	Contoso\Enterprise Admins

You need to authorize Server1.

Which user account should you use?

- A. Admin1
- B. Admin2
- C. Admin3
- D. Admin4

Correct Answer: D

Section: (none)

Explanation

Explanation/Reference:

- A. Local account can't be used
- B. Authorization needs to happen in contoso.com and must be a Ent Admin
- C. Authorization needs to happen in contoso.com and must be a Ent Admin
- D. **Correct domain and is a member of Enterprise Admins**

Must be a member of the Enterprise Admins group to Authorize a DHCP server unless you have delegated to another account.

[http://technet.microsoft.com/en-us/library/cc759688\(v=ws.10\).aspx](http://technet.microsoft.com/en-us/library/cc759688(v=ws.10).aspx)

[http://technet.microsoft.com/en-us/library/cc786474\(v=ws.10\).aspx](http://technet.microsoft.com/en-us/library/cc786474(v=ws.10).aspx)

QUESTION 86

You have a server named Server1 that runs Windows Server 2012.

Several users are members of the local Administrators group.

You need to ensure that all local administrators receive User Account Control (UAC) prompts when they run a Microsoft Management Console (MMC).

Which settings should you modify from the Local Security Policy?



<http://www.gratisexam.com/>

To answer, select the appropriate settings in the answer area.

- A. Account Policies
- B. Local Policies
- C. Windows Firewall with Advanced Security
- D. Network List Manager Policies
- E. Public Key Policies
- F. Software Restriction Policies
- G. Application Control Policies
- H. IP Security Policies on Local Computer
- I. Advanced Audit Policy Configuration

Correct Answer: B

Section: (none)

Explanation

Explanation/Reference:

B. UAC Is controlled by local security policy. Computer Configuration\Windows Settings\Security Settings\Local Policies\Security Option

<http://technet.microsoft.com/en-us/library/jj574202.aspx>



QUESTION 87

You have a DNS server named Server1. Server1 runs Windows Server 2012.

The network ID is 10.1.1.0/24.

An administrator creates several reverse lookup zones.

You need to identify which reverse lookup zone is configured correctly.

Which zone should you identify?

To answer, select the appropriate zone in the answer area.

- A. 1.10.in-addr.arpa

- B. 10.1.in-addr.arpa
- C. 1.1.10.in-addr.arpa
- D. 10.1.1.in-addr.arpa

Correct Answer: C

Section: (none)

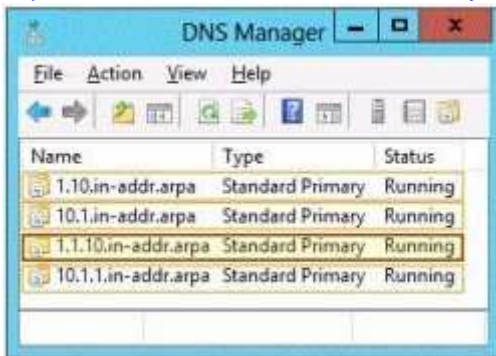
Explanation

Explanation/Reference:

C. Octets are specified in reverse order

<subnet-specific label> . <octet> . <octet> . <octet> . in-addr .arpa

<http://technet.microsoft.com/en-us/library/cc961414.aspx>



QUESTION 88

You have a server named Server1. Server1 runs Windows Server 2012.

Server1 has two network adapters. Each network adapter must be configured as shown in the following table.

Network adapter name	Required IPv6 address type
NIC1	Private Routable
NIC2	Multicast

You need to configure the correct IPv6 address prefix for each network adapter.

Which prefix should you select for each network adapter?

To answer, drag the appropriate IPv6 prefix to the correct network adapter in the answer area. Each prefix may be used once, more than once, or not at all. You may need to drag the split bar between panes or scroll to view content.

Select and Place:

2000::

FC00::

FE80::

FF00::

NIC1: IPv6 Prefix

NIC2: IPv6 Prefix

Correct Answer:

2000::

FC00::

FE80::

FF00::

NIC1: FC00::

NIC2: FF00::

Section: (none)

Explanation

Explanation/Reference:

fc00:: Unique Local Unicast [RFC4193]

ff00:: Multicast [RFC4291]

<http://www.iana.org/assignments/ipv6-address-space/ipv6-address-space.xml>

QUESTION 89

Your company has a main office that contains 225 client computers. The client computers are located on a subnet that uses the network ID of 10.10.1.0/24.

The company plans to open two branch offices. The offices will be configured as shown in the following table.

Office name	Number of client computers
Branch1	100
Branch2	50

You need to select a network prefix for each office to ensure that there are enough IPv4 addresses for each client computer. The solution must minimize the number of unused IP addresses.

Which network prefixes should you select?

To answer, drag the appropriate network prefix to the correct branch office in the answer area.

Select and Place:

Network Prefixes	Answer Area
/24	Branch1 Network prefix
/25	Branch2 Network prefix
/26	
/27	
/28	

Correct Answer:

Network Prefixes	Answer Area
/24	Branch1 /25
	Branch2 /26
/27	
/28	

Section: (none)

Explanation

Explanation/Reference:

Use the calculator.
 Take the number of hosts needed and convert to binary.
 $100 = 1100100$
 Count the # of bits
 1100100000 is 7 bits
 Subtract 7 from 32 (total bits in a NETMASK) = 25

Rinse and repeat

CIDR prefix-length	Dotted-Decimal	# Individual Addresses	# of Classful Networks
/13	255.248.0.0	512 K	8 Bs or 2048 Cs
/14	255.252.0.0	256 K	4 Bs or 1024 Cs
/15	255.254.0.0	128 K	2 Bs or 512 Cs
/16	255.255.0.0	64 K	1 B or 256 Cs
/17	255.255.128.0	32 K	128 Cs
/18	255.255.192.0	16 K	64 Cs
/19	255.255.224.0	8 K	32 Cs
/20	255.255.240.0	4 K	16 Cs
/21	255.255.248.0	2 K	8 Cs
/22	255.255.252.0	1 K	4 Cs
/23	255.255.254.0	512	2 Cs
/24	255.255.255.0	256	1 C
/25	255.255.255.128	128	1/2 C
/26	255.255.255.192	64	1/4 C
/27	255.255.255.224	32	1/8 C

QUESTION 90



What should you do for server core so it can be managed from another server 2012?

- A. 1
- B. 2
- C. 3
- D. 4
- E. 5
- F. 6
- G. 7
- H. 8
- I. 9

- J. 10
- K. 11
- L. 12
- M. 13
- N. 14
- O. 15

Correct Answer: H

Section: (none)

Explanation

Explanation/Reference:

8. **Configure Remote Management is already "Enabled". Next would be to configure Network Settings.**

<http://technet.microsoft.com/en-us/library/jj647766.aspx>

QUESTION 91

Your network contains an Active Directory domain named corp.contoso.com. The domain contains a domain controller named DC1.

When you run **ping dc1.corp.contoso.com**, you receive the result as shown in the exhibit. (Request timed out)

You need to ensure that DC1 can respond to the Ping command.

Which rule should you modify?

- A. Online Responder Service (DCOM-In)
- B. File and Printer Sharing (Echo Request - ICMPv6-In)
- C. Core Networking - Internet Group Management Protocol (IGMP-In)
- D. Core Networking - Destination Unreachable Fragmentation Needed (ICMPv4-In)
- E. Core Networking - Destination Unreachable (ICMPv6-In)
- F. Active Directory Domain Controller - NetBIOS name resolution (UDP-In)
- G. Active Directory Domain Controller - Echo Request (ICMPv4-In)

Correct Answer: G

Section: (none)

Explanation

Explanation/Reference:

G. **ICMP should have been enabled when ADDS was installed**

<http://social.technet.microsoft.com/wiki/contents/articles/16566.windows-active-directory-role-for-windows-servers.aspx>

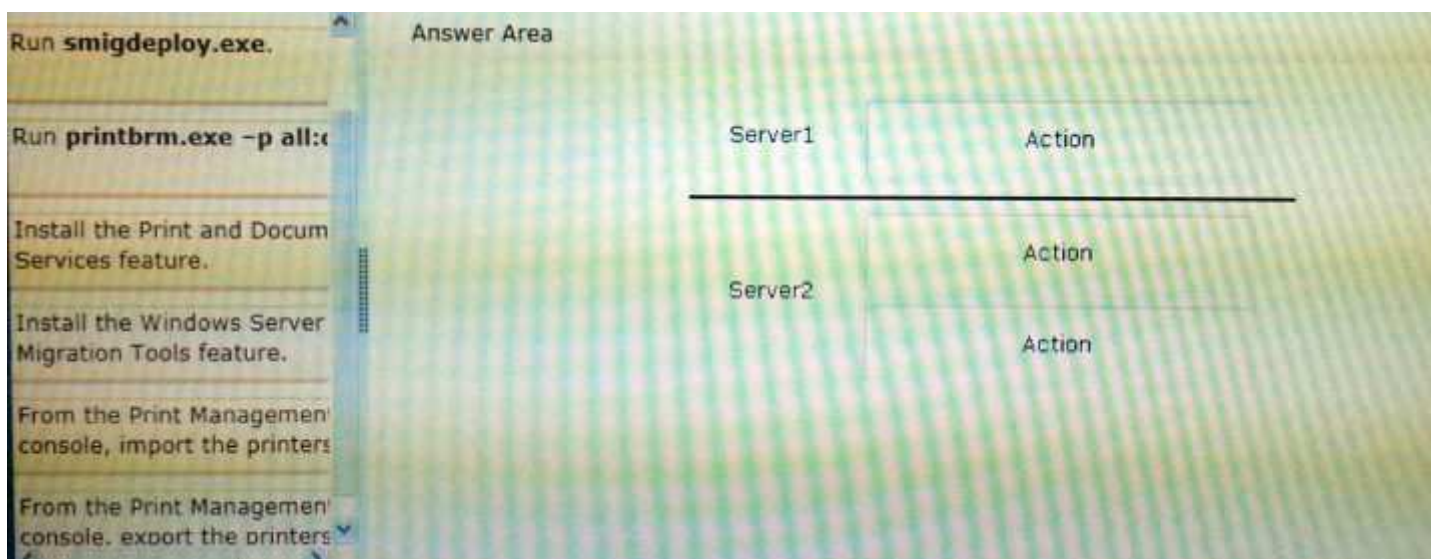
QUESTION 92

You have a print server named Server1. Server1 runs Windows Server 2008 R2. You have a file server named Server2. Server2 runs Windows Server 2012.

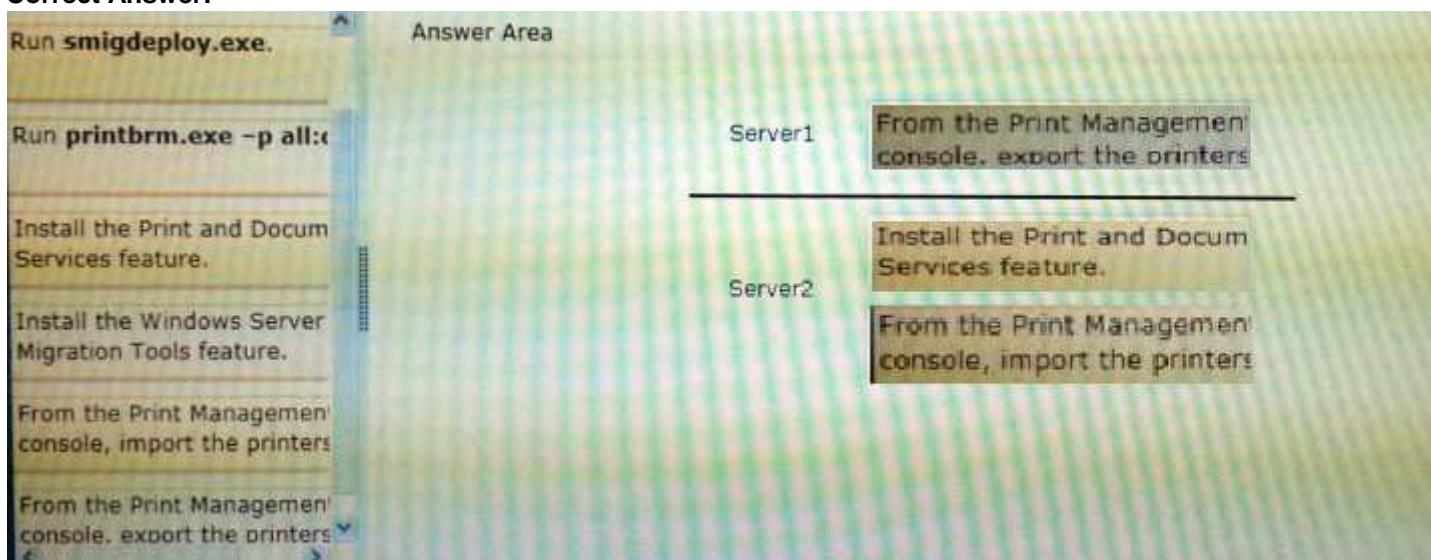
You need to migrate all of the printers on Server1 to Server2.

Which actions should you perform on the servers2?

Select and Place:



Correct Answer:



Section: (none)

Explanation

Explanation/Reference:

While the original server is still running, **use the Printer Migration Wizard or the Printbrm.exe command-line tool to export or back up the print information** (such as settings, queues, and drivers) in a printer settings file. Then, **import or restore this backup image** to a destination server running Windows Server 2012 that **has been configured to run as a print server**.

<http://technet.microsoft.com/en-us/library/jj134150.aspx>

QUESTION 93

A network technician installs Windows Server 2012 Standard on a server named Server1.

A corporate policy states that all servers must run Windows Server 2012 Enterprise.

You need to ensure that Server1 complies with the corporate policy. You want to achieve this goal by using the minimum amount of administrative effort.

What should you perform?

- A. a clean installation of Windows Server 2012
- B. an upgrade installation of Windows Server 2012

- C. online servicing by using Dism
- D. offline servicing by using Dism

Correct Answer: C

Section: (none)

Explanation

Explanation/Reference:

- A. Not least effort
- B. Not least effort
- C. **dism /online /set-edition**
- D. offline would be less ideal and more work

<http://technet.microsoft.com/en-us/library/jj574204.aspx>

QUESTION 94

You have a domain controller named Server1 that runs Windows Server 2012 and has the DNS Server server role installed. Server1 hosts a DNS zone named contoso.com and a GlobalNames zone.

You discover that the root hints were removed from Server1.

You need to view the default root hints of Server1.

What should you do?

- A. From Event Viewer, open the DNS Manager log.
- B. From Notepad, open the Cache.dns file.
- C. From Windows Powershell, run **Get-DNSServerDiagnostics**.
- D. From nslookup, run root server1.contoso.com

Correct Answer: B

Section: (none)

Explanation

Explanation/Reference:

- A. Allows you to troubleshoot DNS issues
- B. **DNS Server service implements root hints using a file, Cache.dns, stored in the %systemroot%\System32\Dns folder on the server**
- C. Gets DNS event logging details
- D. Command does not show root hints.

[http://technet.microsoft.com/en-us/library/cc758353\(v=ws.10\).aspx](http://technet.microsoft.com/en-us/library/cc758353(v=ws.10).aspx)

QUESTION 95

Your company has a main office and two branch offices. The offices connect to each other by using a WAN link.

In the main office, you have a server named Server1 that runs Windows Server 2012.

Server1 is configured to use an IPv4 address only.

You need to assign an IPv6 address to Server1. The IP address must be private and routable.

Which IPv6 address should you assign to Server1?

- A. fe80:ab32:145c::32cc:401b
- B. ff00:3fff:65df:145c:dca8::82a4
- C. 2001:ab32:145c::32cc:401b
- D. fd00:ab32:14:ad88:ac:58:abc2:4

Correct Answer: D

Section: (none)

Explanation

Explanation/Reference:

A. fe80 is a public address

B. ff is a multicast address

C. 2001: IANA has reserved a so-called 'Sub-TLA ID' address block for special assignments which consists of 64 network prefixes in the range 2001:0000::/29 through 2001:01f8::/29.

D. **FD is a private routable prefix**

http://en.wikipedia.org/wiki/IPv6_address

http://en.wikipedia.org/wiki/Unique_local_address

QUESTION 96

Your network contains an Active Directory domain named contoso.com.

All client computers run Windows 8.

You deploy a server named Server1 that runs Windows Server 2012.

You install a new client-server application named App1 on Server1 and on the client computers. The client computers must use TCP port 6444 to connect to App1 on Server1. Server1 publishes the information of App1 to an intranet server named Server2 by using TCP port 3080.

You need to ensure that all of the client computers can connect to App1. The solution must ensure that the application can connect to Server2.

Which Windows Firewall rule should you create on Server1?

- A. an inbound rule to allow a connection to TCP port 3080
- B. an outbound rule to allow a connection to TCP port 3080
- C. an outbound rule to allow a connection to TCP port 6444
- D. an inbound rule to allow a connection to TCP port 6444

Correct Answer: D

Section: (none)

Explanation

Explanation/Reference:

A. Server2 needs inbound on 3080

B. All ports outbound allowed by default

C.

D. **Server1 gets request from Client PC's it needs a inbound rule for 6444**

<http://social.technet.microsoft.com/wiki/contents/articles/13894.troubleshooting-windows-firewall-with-advanced-security-in-windows-server-2012.aspx>

QUESTION 97

Your network contains an Active Directory domain named contoso.com. All servers run Windows Server 2012. The domain contains a server named Server1.

You install the Windows PowerShell Web Access gateway on Server1.

You need to provide administrators with the ability to manage the servers in the domain by using the Windows PowerShell Web Access gateway.

Which two cmdlets should you run on Server1? (Each correct answer presents part of the solution. Choose two.)

- A. **Set-WSManQuickConfig**
- B. **Set-WSManInstance**
- C. **Add-PswaAuthorizationRule**

- D. **Set-BCAuthentication**
- E. **Install-PswaWebApplication**

Correct Answer: CE

Section: (none)

Explanation

Explanation/Reference:

- A. Configures the local computer for remote management.
- B. Modifies the management information that is related to a resource.
- C. **Adds a new authorization rule to the Windows PowerShell® Web Access authorization rule set.**
- D. Specifies the BranchCache computer authentication mode.
- E. **Configures the Windows PowerShell® Web Access web application in IIS.**

<http://technet.microsoft.com/en-us/library/hh849867.aspx>

<http://technet.microsoft.com/en-us/library/hh849875.aspx>

[http://technet.microsoft.com/en-us/library/jj592890\(v=wps.620\).aspx](http://technet.microsoft.com/en-us/library/jj592890(v=wps.620).aspx)

[http://technet.microsoft.com/en-us/library/hh848404\(v=wps.620\).aspx](http://technet.microsoft.com/en-us/library/hh848404(v=wps.620).aspx)

[http://technet.microsoft.com/en-us/library/jj592894\(v=wps.620\).aspx](http://technet.microsoft.com/en-us/library/jj592894(v=wps.620).aspx)

QUESTION 98

Your network contains an Active Directory domain named contoso.com.

All user accounts in the sales department reside in an organizational unit (OU) named OU1.

You have a Group Policy object (GPO) named GPO1. GPO1 is used to deploy a logon script to all of the users in the sales department.

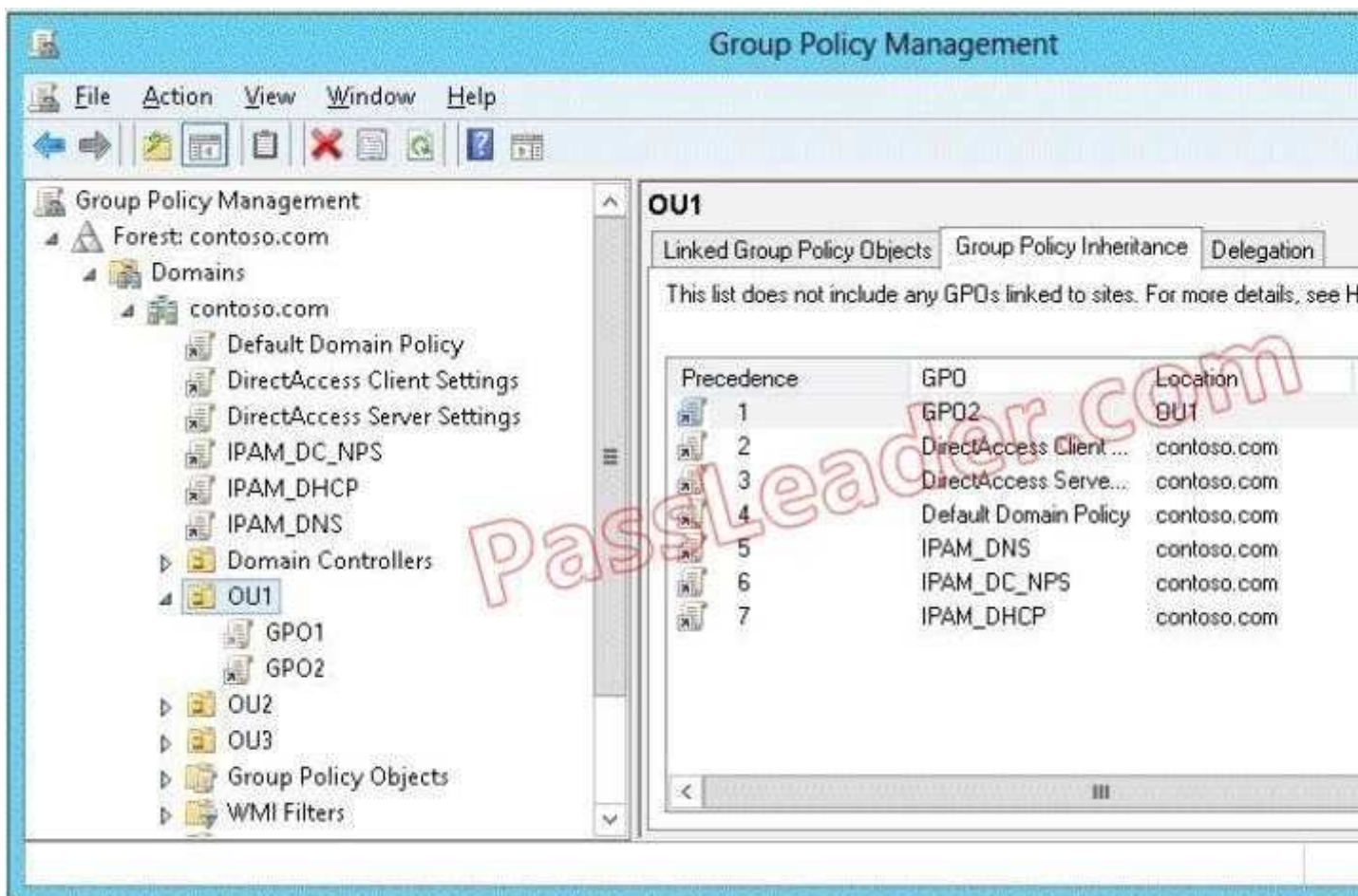
You discover that the logon script does not run when the sales users log on to their computers.

You open Group Policy Management as shown in the exhibit.

You need to ensure that the logon script in GPO1 is applied to the sales users.

What should you do?

Exhibit:



- A. Enforce GPO1.
- B. Modify the link order of GPO1.
- C. Modify the Delegation settings of GPO1.
- D. Enable the link of GPO1.

Correct Answer: D

Section: (none)

Explanation

Explanation/Reference:

D. GPO1 needs to be linked to OU1

<http://technet.microsoft.com/en-us/library/cc732979.aspx>

QUESTION 99

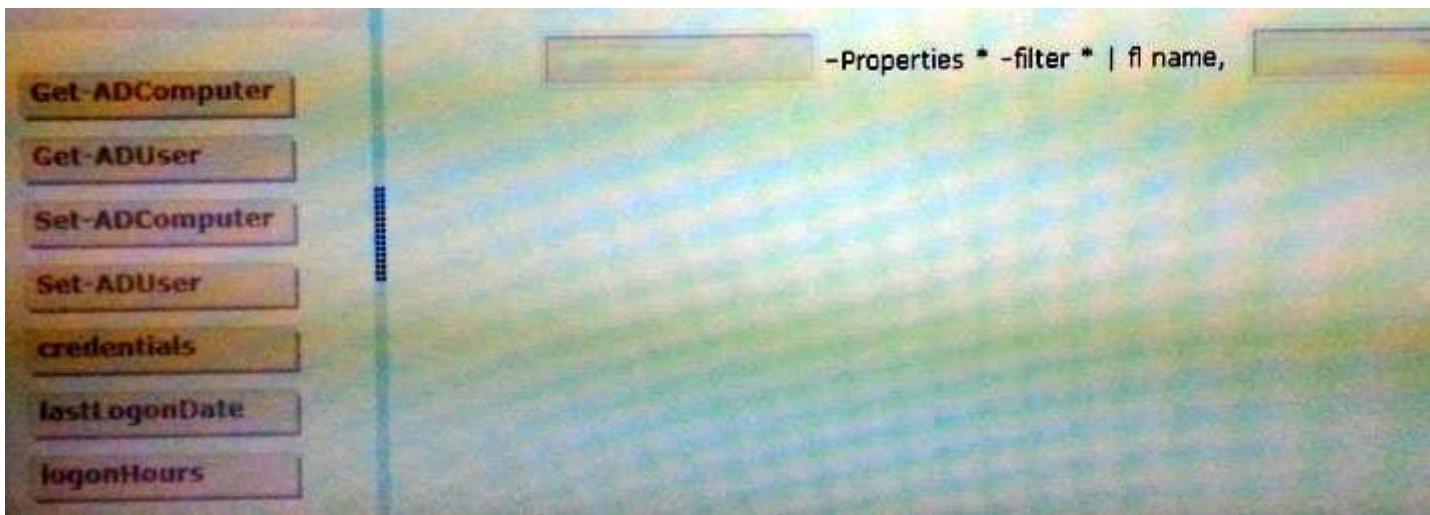
Your network contains an Active Directory domain named contoso.com. The domain contains a server named Server1. Server1 runs Windows Server 2012 and is configured as the only domain controller.

You need to retrieve a list of all the user accounts. The list must include the last time each user was authenticated successfully.

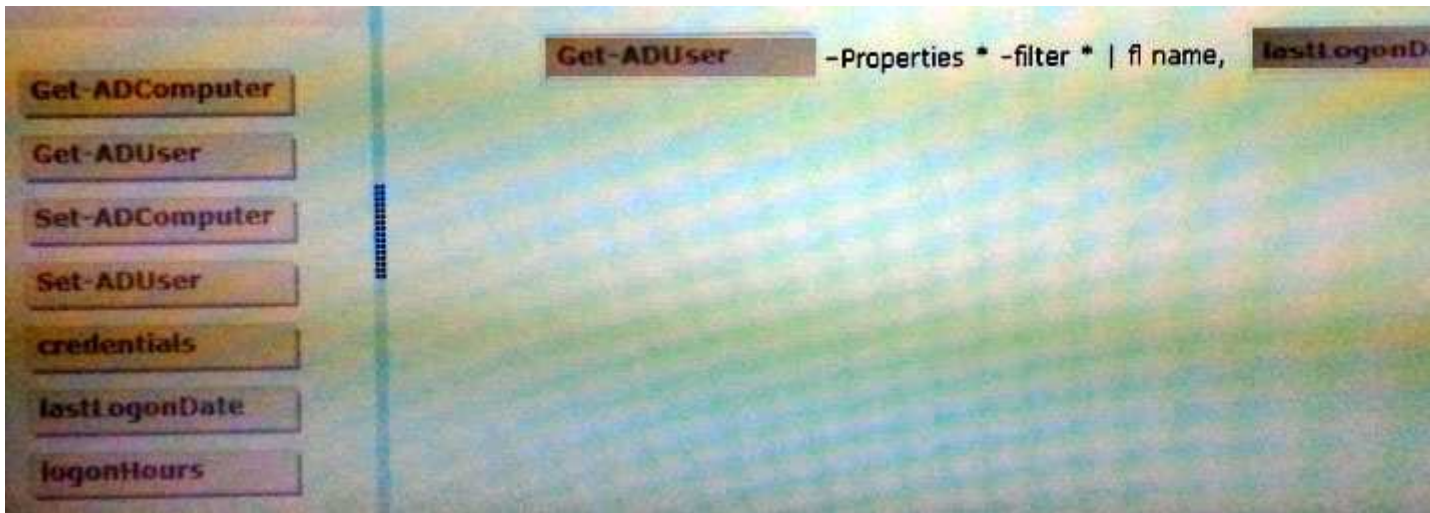
Which Windows PowerShell command should you run?

To answer, drag the appropriate cmdlet or property to the correct locations to complete the PowerShell command in the answer area. Each cmdlet or property may be used once, more than once, or not at all. You may need to drag the split bar between panes or scroll to view content.

Select and Place:



Correct Answer:



Section: (none)

Explanation

Explanation/Reference:

Get-ADUser lastLogonDate

Same as Q 35

<http://technet.microsoft.com/en-us/library/cc732979.aspx>

QUESTION 100

Your network contains an Active Directory domain named contoso.com. The domain contains a server named Server1 that runs Windows Server 2012. Server1 contains a single virtual machine named VM1.

You need to ensure that a user named User1 can manage the virtual machine settings of VM1. The solution must minimize the number of permissions assigned to User1.

To which group should you add User1?

- A. Server Operators
- B. Administrators
- C. Power Users
- D. Hyper-V Administrators

Correct Answer: D

Section: (none)

Explanation

Explanation/Reference:

D. This group can reduce the number of users that belong to the local Administrators group while allowing users to manage Hyper-V

<http://technet.microsoft.com/en-us/library/hh831410.aspx>

QUESTION 101

Your network contains an Active Directory domain named adatum.com. The domain contains a member server named Server1 and a domain controller named DC2. All servers run Windows Server 2012.

On DC2, you open Server Manager and you add Server1 as another server to manage.

From Server Manager on DC2, you right-click Server1 as shown in the exhibit.

You need to ensure that when you right-click Server1, you see the option to run the DHCP console.

What should you do?

- A. On Server1, install the Feature Administration Tools.
- B. In the domain, add DC1 to the DHCP Administrators group.
- C. On DC2 and Server1, run **winrm quickconfig**.
- D. On DC2, install the Role Administration Tools.

Correct Answer: C

Section: (none)

Explanation

Explanation/Reference:

C. Remote Mgmt must be setup on both servers

[http://technet.microsoft.com/en-us/library/ee441255\(v=ws.10\).aspx](http://technet.microsoft.com/en-us/library/ee441255(v=ws.10).aspx)

QUESTION 102

Your network contains an Active Directory domain named contoso.com.

An organizational unit (OU) named OU1 contains user accounts and computer accounts.

A Group Policy object (GPO) named GP1 is linked to the domain. GP1 contains Computer Configuration settings and User Configuration settings.

You need to prevent the User Configuration settings in GP1 from being applied to users. The solution must ensure that the Computer Configuration settings in GP1 are applied to all client computers.

What should you configure?

- A. the Group Policy loopback processing mode
- B. the Block Inheritance feature
- C. the Enforced setting
- D. the GPO Status

Correct Answer: A

Section: (none)

Explanation

Explanation/Reference:

A. loopback with merge option needs to be used

- B. Blocking inheritance prevents Group Policy objects (GPOs) that are linked to higher sites, domains, or organizational units from being automatically inherited by the child-level
- C. Enforced prevents blocking at lower level
- D. The GPO Status. This indicates whether either the user configuration or computer configuration of the

GPO is enabled or disabled

[http://technet.microsoft.com/en-us/library/cc782810\(v=ws.10\).aspx](http://technet.microsoft.com/en-us/library/cc782810(v=ws.10).aspx)
<http://technet.microsoft.com/en-us/library/cc731076.aspx>
<http://technet.microsoft.com/en-us/library/cc753909.aspx>

QUESTION 103

Your network contains two Hyper-V hosts named Host1 and Host2. Host1 contains a virtual machine named VM1. Host2 contains a virtual machine named VM2. VM1 and VM2 run Windows Server 2012.

You install the Network Load Balancing feature on VM1 and VM2.

You need to ensure that the virtual machines are configured to support Network Load Balancing (NLB).

Which virtual machine settings should you configure on VM1 and VM2?

- A. Router guard
- B. DHCP guard
- C. Port mirroring
- D. MAC address

Correct Answer: D

Section: (none)

Explanation

Explanation/Reference:

D. If you do not enable spoofing of MAC address prior to configuring NLB on the VM you could potentially have problems with the NLB cluster.

<http://blogs.msdn.com/b/clustering/archive/2010/07/01/10033544.aspx>

QUESTION 104

Your network contains an Active Directory domain named contoso.com. The domain contains a server named Server1. Server1 runs Windows Server 2012 and has the Hyper-V server role installed.

On Server1, you create a virtual machine named VM1.

When you try to add a RemoteFX 3D Video Adapter to VM1, you discover that the option is unavailable as shown in the following exhibit.

You need to add the RemoteFX 3D Video Adapter to VM1.

What should you do first?

- A. On Server1, run the **Enable-VMRemoteFxPhysicalVideoAdapter** cmdlet.
- B. On Server1, install the Media Foundation feature.
- C. On Server1, run the **Add-VMRemoteFx3dVideoAdapter** cmdlet.
- D. On Server1, install the Remote Desktop Virtualization Host (RD Virtualization Host) role service.

Correct Answer: D

Section: (none)

Explanation

Explanation/Reference:

- A. Enables one or more RemoteFX physical video adapters for use with RemoteFX-enabled virtual machines.
- B.
- C. Adds a RemoteFX video adapter in a virtual machine.
- D. Role must be added for host first

[http://technet.microsoft.com/en-us/library/hh848506\(v=wps.620\).aspx](http://technet.microsoft.com/en-us/library/hh848506(v=wps.620).aspx)
http://en.wikipedia.org/wiki/Microsoft_Media_Foundation

[http://technet.microsoft.com/en-us/library/hh848520\(v=wps.620\).aspx](http://technet.microsoft.com/en-us/library/hh848520(v=wps.620).aspx)
[http://technet.microsoft.com/en-us/library/ff817586\(v=ws.10\).aspx](http://technet.microsoft.com/en-us/library/ff817586(v=ws.10).aspx)

QUESTION 105

Your network contains an Active Directory domain named contoso.com. The domain contains a domain controller named DC1 that runs Windows Server 2012.

A user named User1 attempts to log on to DC1, but receives the error message shown in the exhibit.

You need to ensure that User1 can log on to DC1.

What should you do?

Exhibit:



- A. Add User1 to the Remote Management Users group.
- B. Grant User1 the Allow log on locally user right.
- C. Modify the Account is sensitive and cannot be delegated setting of the User1 account.
- D. Modify the Logon Workstations setting of the User1 account.

Correct Answer: B

Section: (none)

Explanation

Explanation/Reference:

B. Domain controllers, by default, restrict the types of user accounts that have the ability to log on

locally.

[http://technet.microsoft.com/en-us/library/ee957044\(v=ws.10\).aspx](http://technet.microsoft.com/en-us/library/ee957044(v=ws.10).aspx)

QUESTION 106

You have a network printer connected to print server. You need to be able to print if print server goes down.

What should you chose?

- A. branch office direct printing
- B. printer pooling
- C. spooling
- D. Print forwarding

Correct Answer: A

Section: (none)

Explanation

Explanation/Reference:

A. Branch Office Printing

Saves bandwidth and jobs may print faster since *print jobs no longer go through server*.

<http://technet.microsoft.com/en-us/library/jj134152.aspx>

QUESTION 107

You have external virtual switch with srv-io enabled with 10 Virtual Machines on it. You need to make the Virtual Machines able to talk only to each other.

- A. remove the vswitch and recreate it as private.
- B. add new vswitch
- C. remove vswitch and recreate it as public
- D. adjust srv-io settings

Correct Answer: A

Section: (none)

Explanation

Explanation/Reference:

A. remove the vswitch and recreate it as private

Isolated (private) VLAN: Enables administrators to segregate traffic on multiple vlans, to more easily establish isolated tenant communities.

<http://technet.microsoft.com/en-us/library/hh831823.aspx>

<http://www.altaro.com/hyper-v/hyper-v-virtual-switch-explained-part-2/>

QUESTION 108

Your infrastructure divided in 2 sites. You have a forest root domain and child domain. There is only one DC on site 2 with no FSMO roles. The link goes down to site 2 and no users can log on.

What FSMO roles you need on to restore the access?

- A. Infrastructure master
- B. RID master
- C. Domain Naming master
- D. PDC emulator

Correct Answer: D

Section: (none)

Explanation

Explanation/Reference:

D. The PDC emulator is used as a reference DC to double-check incorrect passwords and it also receives new password changes.

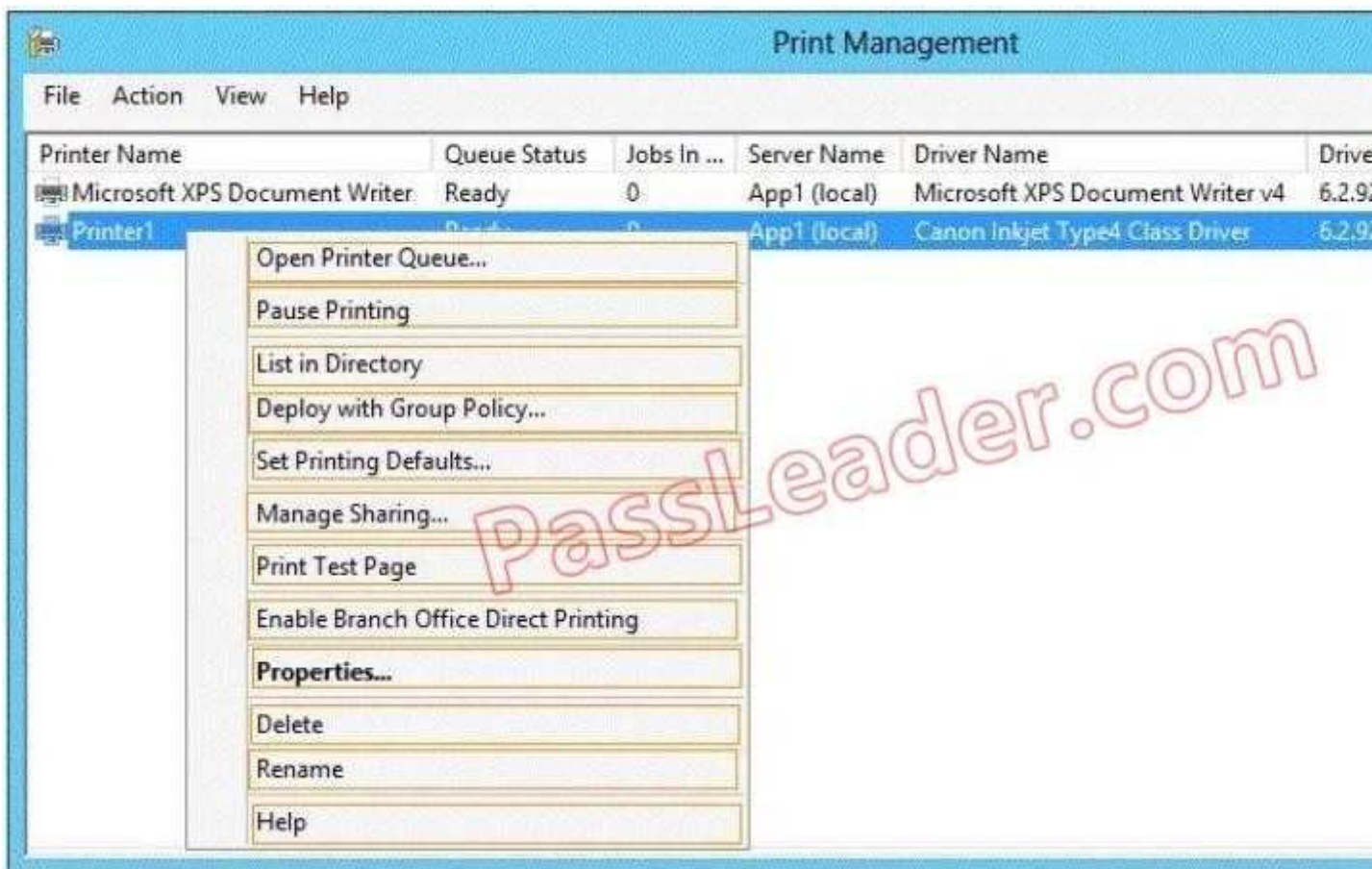
[http://technet.microsoft.com/en-us/library/cc773108\(v=ws.10\).aspx](http://technet.microsoft.com/en-us/library/cc773108(v=ws.10).aspx)

QUESTION 109

Your network contains a server named Server1 that runs Windows Server 2012. App1 has the Print and Document Services server role installed. All client computers run Windows 8. The network contains a network-attached print device named Printer1. From App1, you share Printer1. You need to ensure that users who have connected to Printer1 previously can print to Printer1 if App1 fails.

What should you configure?

To answer, select the appropriate option in the answer area.



- A.
- B.
- C.
- D.

Correct Answer:

Section: (none)

Explanation

Explanation/Reference:

Enable Branch Office Direct Printing

Saves bandwidth and jobs may print faster since *print jobs no longer go through server*.

<http://technet.microsoft.com/en-us/library/jj134152.aspx>



QUESTION 110

You have a server named Server1 that runs Windows Server 2012. Server1 has following storage spaces:

Data
Users
Backups
Primordial

You add an additional hard disk to Server1. You need to identify which storage space contains the new hard disk. Which storage space contains the new disk?

- A. Data
- B. Primordial
- C. Users
- D. Backups

Correct Answer: B

Section: (none)

Explanation

Explanation/Reference:

B. New Disks (Unallocated space) are added to Primordial space

Blank disks are called "Primordial"

<http://blogs.technet.com/b/notesfromthefield/archive/2012/08/03/new-windows-server-2012-storage-spaces.aspx>

QUESTION 111

You have a server named Server1. Server1 runs Windows Server 2012 and has the File and Storage Services server role installed. You attach four 500-GB disks to Server1. You need to configure the storage to meet the following requirements:

Storage for an application named Application1 must be provided.

Application1 requires 20 GB and will require a maximum of 800 GB in three years.

Storage for an application named Application2 must be provided. Application2 requires 20 GB and will require a maximum of 900 GB in three years.

The solution must provide the ability to dynamically add storage without requiring configuration changes to

the applications.

The storage must be available if a single disk fails.

Which two actions should you perform? (Each correct answer presents part of the solution. Choose two.)

- A. From File and Storage Services, create virtual disks by using fixed provisioning.
- B. From File and Storage Services, create a storage pool that uses all four disks.
- C. From Disk Management, create two new mirror volumes that use two disks each.
- D. From Disk Management, create a new RAID-5 volume that uses all four disks.
- E. From File and Storage Services, create virtual disks by using thin provisioning.

Correct Answer: AB

Section: (none)

Explanation

Explanation/Reference:

- A. **2 VHD's set to fixed size of 800 & 900GB**
- B. **Allows Fault Tolerance**
- C. No Fault Tolerance MAX when mirroring 2 500GB drives
- D. 1500GB MAX App's require 1700GB MAX
- E. No Fault Tolerance

<http://technet.microsoft.com/en-us/library/jj822937.aspx>

QUESTION 112

Your network contains multiple subnets. On one of the subnets, you deploy a server named Server1 that runs Windows Server 2012.

You install the DNS Server server role on Server1, and then you create a standard primary zone named contoso.com.

You need to ensure that client computers can resolve single-label names to IP addresses.

What should you do first?

- A. Create a reverse lookup zone.
- B. Convert the contoso.com zone to an Active Directory-integrated zone.
- C. Configure dynamic updates for contoso.com.
- D. Create a GlobalNames zone.

Correct Answer: D

Section: (none)

Explanation

Explanation/Reference:

- D. **Create a GlobalNames zone.**

Use GlobalNames zones in Windows Server 2008 to take advantage of single-label names

<http://technet.microsoft.com/en-us/library/cc731744.aspx>

QUESTION 113

You have a server named Server1 that runs Windows Server 2012. Server1 has six network adapters.

Two of the network adapters are connected to a network named LAN1, two of the network adapters are connected to a network named LAN2, and two of the network adapters are connected to a network named LAN3.

You create a network adapter team named Team1 from the two adapters connected to LAN1.

You create a network adapter team named Team2 from the two adapters connected to LAN2.

A company policy states that all server IP addresses must be assigned by using a reserved address in

DHCP.

You need to identify how many DHCP reservations you must create for Server1.

How many reservations should you identify?

- A. 3
- B. 4
- C. 6
- D. 8

Correct Answer: B

Section: (none)

Explanation

Explanation/Reference:

B. 4

2 Adapters = LAN1 = Team1 = 1 IP

2 Adapters = LAN2 = Team2 = 1 IP

2 Adapters = LAN3 = Not Teamed = 2 IP

A NIC team is considered a SINGLE NIC for this purpose.

$1 + 1 + 2 = 4$

QUESTION 114

Your network contains an Active Directory domain named contoso.com. All servers run Windows Server 2012. The domain contains a server named Server1.

You open Review Options in the Active Directory Domain Services Configuration Wizard, and then you click View script.

You need to ensure that you can use the script to promote Server1 to a domain controller.

Which file extension should you use to save the script?

- A. .pal
- B. .bat
- C. .xml
- D. .cmd

Correct Answer: D

Section: (none)

Explanation

Explanation/Reference:

A. The PAL file type is primarily associated with 'Color Palette' by Microsoft Corporation.

B. It could be .bat but it has existed since MSDOS. .CMD is the newer implementation.

C. .XML is not executable

D. **.CMD**

I think it is .CMD

QUESTION 115

Your network contains an Active Directory domain named contoso.com. The domain contains a server named Server1. Server1 runs a Server Core installation of Windows Server 2012. You install the DNS Server server role on Server1. You need to perform the following configurations on Server1:

You want to create an Active Directory-integrated zone named adatum.com.
You want to send unresolved DNS client queries for other domain suffixes to the DNS server of your company's Internet Service Provider (ISP).

Which Windows PowerShell cmdlets should you use?

To answer, drag the appropriate cmdlet to the correct configuration in the answer area. Each cmdlet may be used once, more than once, or not at all. You may need to drag the split bar between panes or scroll to view content.

Select and Place:

Cmdlets

- Add-DNSServerDirectoryPartition
- Add-DNSServerPrimaryZone
- Set-DNSServer
- Set-DNSServerForwarder
- Set-DNSServerDSSetting
- Set-DNSServerSetting

Answer Area

- Create an Active Directory-integrated zone named adatum.com.
- Send unresolved DNS client queries for other domain suffixes to the DNS server of your company's Internet Service Provider (ISP).

Correct Answer:

Cmdlets

- Add-DNSServerDirectoryPartition
- Add-DNSServerPrimaryZone
- Set-DNSServer
- Set-DNSServerForwarder
- Set-DNSServerDSSetting
- Set-DNSServerSetting

Answer Area

- Create an Active Directory-integrated zone named adatum.com. Add-DNSServerPrimaryZone
- Send unresolved DNS client queries for other domain suffixes to the DNS server of your company's Internet Service Provider (ISP). Set-DNSServerForwarder

Section: (none)

Explanation

Explanation/Reference:

Add-DnsServerDirectoryPartition:	Creates a DNS application directory partition.
Add-DnsServerPrimaryZone:	Adds a primary zone to a DNS server.
Set-DNSServer	Overwrites a DNS server configuration.
SET-DNSServerForwarder	Changes forwarder settings on a DNS server
Set-DNSServerDSSetting	Modifies DNS Active Directory settings.
Set-DNSServerSetting	Modifies DNS server settings.

[http://technet.microsoft.com/en-us/library/jj649942\(v=wps.620\).aspx](http://technet.microsoft.com/en-us/library/jj649942(v=wps.620).aspx)
[http://technet.microsoft.com/en-us/library/jj649876\(v=wps.620\).aspx](http://technet.microsoft.com/en-us/library/jj649876(v=wps.620).aspx)
[http://technet.microsoft.com/en-us/library/jj649845\(v=wps.620\).aspx](http://technet.microsoft.com/en-us/library/jj649845(v=wps.620).aspx)
[http://technet.microsoft.com/en-us/library/jj649887\(v=wps.620\).aspx](http://technet.microsoft.com/en-us/library/jj649887(v=wps.620).aspx)
<http://technet.microsoft.com/en-us/library/jj649874.aspx>
<http://technet.microsoft.com/en-us/library/jj649909.aspx>



<http://www.gratisexam.com/>