

Microsoft.Braindumps.70-489.v2014-01-02.by.SANDRA.76q

Number: 70-489
Passing Score: 700
Time Limit: 120 min
File Version: 16.5



<http://www.gratisexam.com/>

Exam Code: 70-489

Exam Name: Developing Microsoft SharePoint Server 2013 Advanced Solutions



Testlet 1

Trey Research

Background

You develop an intranet portal for Trey Research. End users of the portal are researchers and office staff.

Business Requirements

All end users must be able to customize their profile with relevant information. Researchers must store research papers, upload supporting documents, and search content.

Storage

The portal must use an existing Microsoft SQL Server database to access and store work profile information and research papers.

Data Access

- The portal must use Business Connectivity Services (BCS) to access data from external systems.
- Researchers must search content from SharePoint and external systems.
- Researchers must manage a research topic and related content as a single entity.

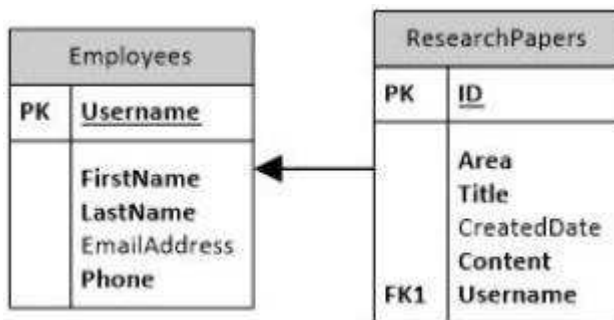
User Profile

- Employees must be able to customize their profile.
- Administrators must be able to create new profile properties.

Technical Requirements

Data Store

The data model for the database entities is shown below:



Users must not be allowed to update the Employees.Username and ResearchPapers.ID fields. The fields uniquely distinguish the corresponding entity.

Access External Data

- You must create an external content type named TreyResearch to access the SQL data source. During development, the data source will be accessible locally.
- You must develop an app to access the fields named Employee Name and Research Paper Title.
- Researchers must be able to find all research papers that are written by a particular employee.
- A research paper always must be associated with the employee that wrote it.

Document Management

- Researchers must be able to upload research papers and relevant supporting materials into a document set named Research Content.
- All the document sets must be stored in a list named ResearchPapers.
- All documents that are uploaded must contain the prefix DOC in the file name.

Environment

The SQL database will be on a different physical server when the solution is deployed to a production

environment. The solution must use the SQL Server user named sqltrey to connect to the database. The BCS service is configured and running in the production environment.

Personalize

- You must use custom profile properties to add a new section to the user profile properties page.
- The solution must use the client-side object model (CSOM) to upload employee profile pictures.
- Employees must be able to change their display name on the site.
- Each employee's page must display the value of the DisplayName and Title fields.

Search

- The Microsoft Bing API web service must be used to search for research papers. No code must be written.
- The app must use a Content Enrichment web service named AbstractIndexer. The app must use the AbstractIndexer service to index search content.
- The solution must store large-sized media files in a dedicated SQL Server database.
- The database must use the ResearchPapers.ID field as the foreign key to associate the field with the TreyResearch external content type.

Application Structure

- **Application Structure:**

Relevant portions of the solution files are shown below. (Line numbers in the code segments are included for reference only and include a two-character prefix that denotes the specific file to which they belong.)

- **App.js:**

```

AJ01  var context;
AJ02  var web;
AJ03  var user;
AJ04
AJ05
AJ06      $.ajax({
AJ07          url: listURL,
AJ08          headers: {
AJ09              "accept": "application/json",
AJ10              "X-RequestDigest": $("#__REQUESTDIGEST").val()
AJ11          },
AJ12          success: this.showItems,
AJ13          error: this.failMethod
AJ14      });
AJ15  }
AJ16
AJ17  this.showItems = function (data) {
AJ18      $("#Container").children().remove();
AJ19      $.each(data.d.results, function (key, val) {
AJ20          var item = $("#EmployeeInfoTemplate").clone()
AJ21              .attr("id", val.BdcIdentity)
AJ22              .fadeIn("slow");
AJ23          ...
AJ24          item.appendTo("#Container");
AJ25      });
AJ26  }
AJ27
AJ28  this.failMethod = function (jqXHR, textStatus, errorThrown) {
AJ29      alert('failed: ' + errorThrown);
AJ30  }
AJ31  }
AJ32  ExecuteOrDelayUntilScriptLoaded(getEmployees, "sp.js");
AJ33  });
AJ34
AJ35  function getEmployees() {
AJ36      var grid = new AppLevelECT.Grid
AJ37      ("ColumnContainer", 3, _spPageContextInfo.webServerRelativeUrl);
AJ38      grid.init();
AJ39  }

```

- ManageUserProfiles.cs:

```

MP01 namespace ManageUserProfiles
MP02 {
MP03     class ProfileProperties
MP04     {
MP05         public static void AddProfileProperty(string name, string disp
bool isMultivalued)
MP06     {
MP07         using (SPSite site = new SPSite("http://treyresearch.com/use
MP08         {
MP09             SPServiceContext svcContext = SPServiceContext.GetContext(
MP10             try
MP11             {
MP12                 ProfilePropertyManager prfPropMgr;
MP13                 ProfileSubtypeManager prfTypeMgr;
MP14                 ProfileSubtypePropertyManager prftypePropMgr;
MP15                 ProfileTypePropertyManager typPropMgr;
MP16                 ProfileSubtypeProperty prfTypeProp;
MP17                 ProfileTypeProperty prfProp;
MP18                 ProfileSubtype prfType;
MP19                 CorePropertyManager corePropMgr;
MP20                 CoreProperty coreProp;
MP21                 prfPropMgr = new UserProfileConfigManager(svcContext)
                        .ProfilePropertyManager;

MP22
MP23                 prfTypeProp = prftypePropMgr.Create(prfProp);
MP24                 prfTypeProp.IsUserEditable = true;
MP25                 prfTypeProp.DefaultPrivacy = Privacy.Public;
MP26                 prfTypeProp.UserOverridePrivacy = true;
MP27                 prftypePropMgr.Add(prfTypeProp);
MP28             }
MP29             catch (System.Exception e)
MP30             {
MP31                 throw new Exception("Error occurred: " + e.ToString());
MP32             }
MP33         }
MP34     }
MP35 }
MP36 }
MP37
MP38
MP39
MP40 public void UploadPicture(string account, string picURL)
MP41 {
MP42     try
MP43     {
MP44     }
MP45 }
MP46 catch (Exception e)
MP47 {
MP48     throw new Exception("Error occurred: " + e.ToString());
MP49 }

```

▪ ContentManagement.cs:

```

CM01 private void CreateDocumentSets()
CM02 {
CM03     using (SPSite site = new SPSite("http://treyresearch.com/sites"))
CM04     {
CM05         using (SPWeb web = site.RootWeb)
CM06         {
CM07
CM08         }
CM09     }
CM10 }

```

QUESTION 1

Question 1

You need to add code to line MP22 to create the custom profile property

How should you complete the relevant code?

(To answer, drag the appropriate code segments to the correct locations in the answer area. Each code segment may be used once or not at all. You may need to drag the split bar between panes or scroll to view content)

Select and Place:

	Answer Area
Create(coreProp)	corePropMgr = prfPropMgr.GetCoreProperties();
Create(corePropMgr)	coreProp = corePropMgr.
Create(true)	coreProp.Name = name;
Create(false)	coreProp.DisplayName = displayName;
GetProfileSubtypeProperties	coreProp.IsMultivalued = isMultivalued;
GetProfileTypeProperties	coreProp.Type = PropertyDataType.StringMultiValue;
GetCoreProperties	coreProp.Length = 1024;
	corePropMgr.Add(coreProp);
	typPropMgr = prfPropMgr
	. (ProfileType.User);
	prfProp = typPropMgr.
	prfProp.IsVisibleOnViewer = true;
	typPropMgr.Add(prfProp);
	...
	prftypePropMgr = prfPropMgr
	. (prfType.Name);

Correct Answer:

Create(corePropMgr)

Create(true)

GetCoreProperties

Answer Area

```

corePropMgr = prfPropMgr.GetCoreProperties();

coreProp = corePropMgr. Create(false)

coreProp.Name = name;
coreProp.DisplayName = displayName;
coreProp.IsMultivalued = isMultivalued;
coreProp.Type = PropertyDataType.StringMultiValue;
coreProp.Length = 1024;
corePropMgr.Add(coreProp);
typPropMgr = prfPropMgr

. GetProfileTypeProperties (ProfileType.User);

prfProp = typPropMgr. Create(coreProp)

prfProp.IsVisibleOnViewer = true;
typPropMgr.Add(prfProp);
...
prftypePropMgr = prfPropMgr

. GetProfileSubtypeProperties (prfType.Name);

```

Section: [none]

Explanation

Explanation/Reference:

CorePropertyManager.Create method creates a CoreProperty object.

public CoreProperty Create(bool isSection);

<http://msdn.microsoft.com/en-us/library/microsoft.office.server.userprofiles.corepropertymanager.create.aspx>

QUESTION 2

Question 2

You need to add code to line MP57 to display the required properties for the user profile

How should you complete the relevant code?

(To answer, drag the appropriate code segments to the correct locations in the answer area. Each code segment may be used once, more than once, or not at all. You may need to drag the split bar between panes or scroll to view content)

Select and Place:

<pre> clientContext.Load(usrPrfProps); clientContext.LoadQuery(usrPrfProps); .GetUserProfilePropertyFor(usrPrfProps); .GetUserProfilePropertiesFor(usrPrfProps); string[] prfProps = new string[] { "DisplayName", "Title" }; string[] prfProps = new string[] { "PreferredName", "Title" }; var prfProps = new ArrayList() { "DisplayName", "Title" }; </pre>	<p>Answer Area</p> <pre> var peopleManager </pre> <p></p> <pre> var usrPrfProps = account, prfProps) var profilePropert </pre> <p></p> <p></p> <pre> clientContext.Exec </pre>
--	--

Correct Answer:

<pre> clientContext.Load(usrPrfProps); clientContext.LoadQuery(usrPrfProps); .GetUserProfilePropertyFor(usrPrfProps); .GetUserProfilePropertiesFor(usrPrfProps); string[] prfProps = new string[] { "DisplayName", "Title" }; string[] prfProps = new string[] { "PreferredName", "Title" }; var prfProps = new ArrayList() { "DisplayName", "Title" }; </pre>	<p>Answer Area</p> <pre> var peopleManager </pre> <p>string[] prfProps</p> <pre> var usrPrfProps = account, prfProps) var profilePropert </pre> <p>.GetUserProfileP</p> <p>clientContext.Lo</p> <pre> clientContext.Exec </pre>
--	--

Section: [none]

Explanation

Explanation/Reference:

public **UserProfilePropertiesForUser**(ClientRuntimeContext context, string accountName, string[] propertyNames)

// Connect to the client context.

ClientContext clientContext = new ClientContext(serverUrl);

// Get the PeopleManager object.

PeopleManager peopleManager = new PeopleManager(clientContext);

// Retrieve specific properties by using the GetUserProfilePropertiesFor method.

// The returned collection contains only property values.

string[] profilePropertyNames = new string[] { "PreferredName", "Department", "Title" };

UserProfilePropertiesForUser profilePropertiesForUser = new UserProfilePropertiesForUser(


```
clientContext, targetUser, profilePropertyNames);  
IEnumerable<string> profilePropertyValues = peopleManager.GetUserProfilePropertiesFor  
(profilePropertiesForUser);
```

```
// Load the request and run it on the server.  
clientContext.Load(profilePropertiesForUser);  
clientContext.ExecuteQuery();
```

<http://msdn.microsoft.com/en-us/library/jj163182.aspx>
[http://msdn.microsoft.com/en-us/library/
microsoft.sharepoint.client.userprofiles.userprofilepropertiesforuser.aspx](http://msdn.microsoft.com/en-us/library/microsoft.sharepoint.client.userprofiles.userprofilepropertiesforuser.aspx)

QUESTION 3

Question 3

You need to configure the external content type to search for research papers

Which indexing connector should you use?

- A. .NET Type Connector
- B. WCF Service Connector
- C. Custom Connector
- D. SQL Server Connector

Correct Answer: D

Section: [none]

Explanation

Explanation/Reference:

Testking: Answer B

QUESTION 4

Question 4

You need to generate document identifiers for each new document that is uploaded to the site.

What should you do?

- A. Create a derived class that inherits from the abstract class named Microsoft.Office.DocumentManagement.DocumentId and then override all of the abstract methods.
- B. Create a derived class that inherits from the abstract class named Microsoft.Office.DocumentManagement.DocumentIdProvider and then override all of the virtual members.
- C. Create a derived class that inherits from the Microsoft.Office.DocumentManagement.DocumentIdProvider abstract class and then implement all abstract members.
- D. Create a class to implement the Microsoft.Office.DocumentManagement.IDocumentId interface and then override all of the virtual members.

Correct Answer: C

Section: [none]

Explanation

Explanation/Reference:

DocumentIdProvider class represents the base abstract class for implementing a Document ID generator.

[http://msdn.microsoft.com/en-us/library/microsoft.office.documentmanagement.documentidprovider%
28v=office.14%29.aspx](http://msdn.microsoft.com/en-us/library/microsoft.office.documentmanagement.documentidprovider%28v=office.14%29.aspx)

Testking: Answer B

QUESTION 5

Question 5

You need to configure authentication for the external content type in the production environment.



<http://www.gratisexam.com/>

Which three actions should you perform in sequence?

(To answer, move the appropriate actions from the list of actions to the answer area and arrange them in the correct order)

Select and Place:

	Answer Area
Add the sqltrey user login to the Secure Store Service.	
Configure permissions to allow the user that is logged in to have access to the Secure Store Service.	
Stop the Business Data Connectivity service.	
Create a Secure Store Service application as a target application.	
Connect to the external data source by using the Impersonated Custom Identity and the target application name.	
Connect to the external data source by using the Impersonated Windows Identity and the target application name.	

Correct Answer:

	Answer Area
	Create a Secure Store Service application as a target application.
Configure permissions to allow the user that is logged in to have access to the Secure Store Service.	Add the sqltrey user login to the Secure Store Service.
Stop the Business Data Connectivity service.	Connect to the external data source by using the Impersonated Windows Identity and the target application name.
Connect to the external data source by using the Impersonated Custom Identity and the target application name.	

Section: [none]

Explanation

Explanation/Reference:

<http://msdn.microsoft.com/en-us/library/ee556780.aspx>

From scenario:

- You must create an external content type named TreyResearch to access the SQL data source. During development, the data source will be accessible locally.
- The solution must use the SQL Server user named sqltrey to connect to the database.

QUESTION 6

Question 6

You need to add code at line AJ05 to complete the implementation of the app.

How should you complete the relevant code?

(To answer, drag the appropriate code segment to the correct location in the answer area. Each code segment may be used once, more than once, or not at all. You may need to drag the split bar between panes or scroll to view content)

Select and Place:

	Answer Area
context.load(user);	<pre>function sharePointReady() { context = new SP.ClientContext.get_current(); web = context.get_web(); user = web.get_currentUser(); context.executeQueryAsync(\$('#message').text('Hello ' + user.get_title()), alert('Failed to get user name')); } \$(document).ready(function () { window.AppLevelECT = window.AppLevelECT {}; AppLevelECT.Grid = function (surlWeb) { this.init = function () { var listURL = surlWeb + "_api/" + "\$select=BdcIdentity,"</pre>
context.init(user);	
Lists/GetByTitle	
Lists/GetByName	
FirstName, LastName, Title	
FirstName, LastName, Phone	<pre> ("EmploymentHistory") + "BdcIdentity, " +</pre>

Correct Answer:

	Answer Area
context.load(user);	<pre>function sharePointReady() { context = new SP.ClientContext.get_current(); web = context.get_web(); user = web.get_currentUser(); context.load(user); context.executeQueryAsync(\$('#message').text('Hello ' + user.get_title()), alert('Failed to get user name')); } \$(document).ready(function () { window.AppLevelECT = window.AppLevelECT {}; AppLevelECT.Grid = function (surlWeb) { this.init = function () { var listURL = surlWeb + "_api/" + "\$select=BdcIdentity,"</pre>
context.init(user);	
Lists/GetByTitle	
Lists/GetByName	
FirstName, LastName, Title	
FirstName, LastName, Phone	<pre> ("EmploymentHistory") + "BdcIdentity, " +</pre>

Section: [none]
Explanation

Explanation/Reference:

Client object model method:

List.GetByTitle(listname).GetItems()

REST endpoint:

http://server/site/_api/lists/getbytitle('listname')/items

<http://msdn.microsoft.com/en-us/library/office/dn292556.aspx>

QUESTION 7**Question 7**

You need to create the external content type to support the data model.

In the Return Parameter Configuration dialog box, in the properties section, which options should you select?
(To answer, select the appropriate setting or settings in the answer area)

Hot Area:

Properties	
Data Source Element:	Username
.NET Type:	System.String
Map to Identifier:	<input checked="" type="checkbox"/>
Identifier:	Username
Field:	Username
Display Name:	Username
Foreign Identifier:	(Click to Add)
Required:	<input type="checkbox"/>
Read-Only:	<input type="checkbox"/>
Office Property:	Unmapped
Show In Picker:	<input type="checkbox"/>
Timestamp Field:	<input type="checkbox"/>

Correct Answer:

Properties	
Data Source Element:	Username
.NET Type:	System.String
Map to Identifier:	<input checked="" type="checkbox"/>
Identifier:	Username
Field:	Username
Display Name:	Username
Foreign Identifier:	(Click to Add)
Required:	<input type="checkbox"/>
Read-Only:	<input type="checkbox"/>
Office Property:	Unmapped
Show In Picker:	<input type="checkbox"/>
Timestamp Field:	<input type="checkbox"/>

Section: [none]

Explanation

Explanation/Reference:

From scenario:

- You must create an external content type named TreyResearch to access the SQL data source. During development, the data source will be accessible locally.

QUESTION 8

Question 8

You need to add code to line CM07 to create the Research Content document set.

How should you complete the relevant code?

(To answer, select the appropriate option from the dropdown list in the answer area)

Hot Area:

```

SPList lst = web.Lists[""];

SPFolder folder = lst.RootFolder;
SPContentType docsetCT = lst.ContentTypes["Document Set"];

Hashtable properties = new  ();

properties.Add("Name", "Research Name");
properties.Add("Description", "Research Description");
properties.Add("Content1", "Video File Name");
properties.Add("Content2", "Audio File Name");
var docSet = DocumentSet.

;
Create(folder, "Research Content", lst, properties);
Create(folder, "Research Documents", docsetCT.Id, properties, true);

```

Correct Answer:

```

SPList lst = web.Lists[""];

SPFolder folder = lst.RootFolder;
SPContentType docsetCT = lst.ContentTypes["Document Set"];

Hashtable properties = new  ();

properties.Add("Name", "Research Name");
properties.Add("Description", "Research Description");
properties.Add("Content1", "Video File Name");
properties.Add("Content2", "Audio File Name");
var docSet = DocumentSet.

;
Create(folder, "Research Content", lst, properties);
Create(folder, "Research Documents", docsetCT.Id, properties, true);

```

Section: [none]

Explanation

Explanation/Reference:

Creates a new DocumentSet object:

DocumentSet.**Create**(SPFolder, String, SPContentTypeId, Hashtable)

DocumentSet.**Create**(SPFolder, String, SPContentTypeId, Hashtable, Boolean)

```
public static DocumentSet Create(  
    SPFolder parentFolder,  
    string name,  
    SPContentTypeId ctid,  
    Hashtable properties,  
    bool bProvisionDefaultContent  
)
```

<http://msdn.microsoft.com/en-us/library/ee569037.aspx>

QUESTION 9

Question 9

You need to configure authentication to access the SQL data source during development

Which authentication mechanism should you use?

- A. Impersonated Windows Identity
- B. Pass Through
- C. Impersonated Custom Identity
- D. Forms Based Authentication

Correct Answer: B

Section: [none]

Explanation

Explanation/Reference:

QUESTION 10

Question 10

You need to ensure that users can upload pictures

Which code segment should you insert at line MP57?

- A.

```
using (SPSite site = new SPSite("http://treyresearch.com/users"))  
{  
    var upm = new UserProfileManager(clientContext);  
    var up = upm.GetUserProfile(account);  
    up["PictureUrl"].Value = picURL;  
    up.Commit();  
}
```
- B.

```
var peopleManager = new PeopleManager(clientContext);  
var personProperties = peopleManager.GetPropertiesFor(account);  
...  
Stream sr = new System.IO.FileStream(picURL, FileMode.Open);  
peopleManager.SetMyProfilePicture(sr);  
...
```

- C.

```
using (SPSite site = new SPSite("http://treyresearch.com/users"))
{
    var upm = new UserProfileManager(clientContext);
    var up = upm.GetUserProfile(account);
    Stream sr = new System.IO.FileStream(picURL, FileMode.Open);
    up.PictureUrl.SetMyProfilePicture(sr);
    up.Commit();
}
```
- D.

```
var peopleManager = new PeopleManager(clientContext);
var personProperties = peopleManager.GetPropertiesFor(account);
...
Stream sr = new System.IO.FileStream(picURL, FileMode.Open);
personProperties.PictureUrl = picURL;
...
```

Correct Answer: B

Section: [none]

Explanation

Explanation/Reference:

PeopleManager.**SetMyProfilePicture** method **uploads** and **sets** the user profile picture.
PersonProperties.**PictureUrl** property **gets** the URL of the user's profile picture.

<http://msdn.microsoft.com/en-us/library/microsoft.sharepoint.client.userprofiles.peoplemanager.setmyprofilepicture.aspx>

<http://msdn.microsoft.com/en-us/library/microsoft.sharepoint.client.userprofiles.personproperties.pictureurl.aspx>

QUESTION 11

Question 11

You need to ensure that employees can change their display name.

Which object model should you use?

- A. Use the server-side object model
- B. Use a Representational State Transfer (REST) based service.
- C. Use the JavaScript object model
- D. Use the .Net client-side object model

Correct Answer:

Section: [none]

Explanation

Explanation/Reference:

http://msdn.microsoft.com/en-us/library/microsoft.sharepoint.client.userprofiles.peoplemanager_methods.aspx

Testlet 1

Lucerne Publishing

Background

You are hired by Lucerne Publishing to design and implement a new public-facing Internet site by using SharePoint. Lucerne Publishing also needs an intranet site to host sensitive documents and content.

Business Requirements

Internet

- Content owners must be able to:
- Modify content in pages that are published for anonymous site visitors.
- Modify search engine optimization (SEO) properties to optimize visibility of the web site.
- Create content in multiple languages and use automatic translation.

Intranet

- Each department must have its own site. Each department home page must display relevant information about the department and contact information for employees.
- Each user is encouraged to create their own blog, on which they will publish information about current projects and get feedback from other users in the company.
- Personalized content must be displayed for an employee when an employee accesses the intranet. The page must include a feed that displays updates from other users' blog posts.

Technical Requirements

Service Applications

- The Internet and intranet web applications must use the Managed Metadata Service (MMS). Both web applications use a separate MMS service application and do not share term sets.
- The intranet web application uses the User Profile Service Application (UPA).
- The intranet uses all available social features of the UPA.

Users follow, mention, and identify documents and people. Users often discuss news by using hash tags. You must develop an app part that allows the current user to show different top feeds from user profiles.

Hardware

The hardware that hosts the Internet site must handle thousands of concurrent users.

URLs

The following table lists the URLs that the SharePoint sites will use.

Site	URL
Public-facing Internet site	http://www.lucernepublishing.com
Intranet	http://intranet.lucernepublishing.com
My Sites	http://my.lucernepublishing.com

Search Engine Optimization (SEO)

- You must implement search engine optimization for the public-facing Internet site. SharePoint must produce a site map file.
- You must publish data from the intranet site to the Internet web site by using cross-site publishing. You must define a catalog, add the data, and publish it to the Internet site.
- You must create a custom tool that site collection administrators use to manage catalog connections.
- You must define the API calls to remove or update existing catalog connections.

Filtering

You must enable canonical URL filtering to improve ranking by Internet search engines. The Internet site that must use canonical filtering has the following URL: <http://www.lucernepublishing.com/products/pages/products.aspx?productID=<num>&productCategory=<category>>

You must define the filters that the site collection administrator uses.

Internet

You publish the Internet site for multiple device types, such as mobile phones and tablet devices. The solution uses multiple master pages. Device channels select the master page to display based upon the capabilities of the device that connects to the site.

The following table lists the device channels and master pages that the site uses.

Master page	Device channels
Phone	Three device channels use the Phone master page, including one called Windows Phone that has an alias named WinPhone.
Tablet	There are two device channels that use the Tablet master page.
Default	Any device that is not included in other device channels uses a device channel named Default. The Default channel uses the Default master page.

You create a Windows Phone app. When users access the site by using a Windows phone, a message must appear on every page of the mobile site. The message must notify users that they can download the Windows Phone app to their phone. The HTML that contains the message must render only to the Windows phones.

Intranet

- Each department must have its own site collection.
- Each employee must have Reader permissions to their department site collection.
- Employees access the intranet site by using a wide variety of devices.
- Some employees report that the home page loads slowly. You investigate the issue and find out that the size of some images is very large. You must enable image renditions on the intranet site collection.
- You must develop an app part that displays information from the users' personal sites and news feeds.

Custom Development

- You design an application framework. The framework is used by other developers on the team. The framework must include entry points that are used to log errors and exceptions. You need the entry points.
- You create a custom Visual Web Part in a solution package. You deploy the solution package as a farm solution by using Windows PowerShell. An error message that includes a correlation ID displays when you add the custom Visual Web Part to a SharePoint site.
- You must create a tool to maintain social links. The tool must:
 - Allow the current user to follow another user.
 - Return true if the target user is currently being followed by the current user.
- You develop a Windows Store app that synchronizes data between the intranet sites and the app to allow users to work offline.

Performance Improvement

- You have not modified the Request Management configuration.
- You must implement caching in your custom code to improve the performance of the company's intranet site.
- The SharePoint front-end web servers are load-balanced. Each request within a user session can be processed by different front-end web servers.
- Objects that are cached must always be available, regardless of which front-end web server processes the request.
- You must monitor the amount of memory that is available and the number of current requests for each server.

QUESTION 1

Question 1

You need to configure filtering for the Product page.

Which filtering option should you use?

- A. products/pages/products.aspx?productID=*&.productCategory=*
- B. products.aspx;productID;productCategory;lucernepublishing.com
- C. products;productID;productCategory;lucernepublishing.com
- D. products/pages/products.aspx?*
- E. productID;productCategory

Correct Answer: E

Section: [none]

Explanation

Explanation/Reference:

Enabling canonical link parameter filtering means SharePoint will strip all parameters from links unless you specify otherwise when reporting URLs to search engines. In other words, you can explicitly state when parameters should be included with links and what those parameters should be.

If you want certain parameters to be tracked by search engines, click Filter link parameters, and then enter the parameters in the box. Be sure to separate parameters with a semicolon (for example, year;month).

<http://office.microsoft.com/en-001/sharepoint-help/optimize-your-website-for-search-seo-HA102900145.aspx>

QUESTION 2

Question 2

You create a custom Visual Web Part. You deploy the solution package to the farm by using Windows PowerShell. When you try to add the custom Visual Web Part to a SharePoint site, an error message displays that includes a correlation ID.

You need to determine the cause of the error. What should you do? (Each correct answer presents complete solution. Choose all that apply.)

- A. Run the Get-SPLogEvent Windows PowerShell cmdlet.
- B. Run the Get-SPDiagnosticConfig Windows PowerShell cmdlet.
- C. Run the Get-SPHealthAnalysisRule Windows PowerShell cmdlet.
- D. View the Service Calls tab on the Developer Dashboard.
- E. View the Unified Logging Service (ULS) tab on the Developer Dashboard.

Correct Answer: AE

Section: [none]

Explanation

Explanation/Reference:

<http://ittechnotebook.blogspot.co.uk/2013/07/how-to-find-real-error-in-sharepoint.html>

QUESTION 3

Question 3

You need to implement the social maintenance tool.

How should you complete the relevant code?


(To answer, select the appropriate option from each dropdown list in the answer area)

Hot Area:


```

protected bool follow(ClientContext context,
    SocialFollowingManager fm, string user)
{
    SocialActorInfo info = new SocialActorInfo();
    info.AccountName = user

    ClientResult<SocialFollowResult>

    result = fm.  (info);

    context.ExecuteQuery();

    if (result.Value ==
        SocialFollowResult.  )
    {
        return true;
    }
    return false;
}

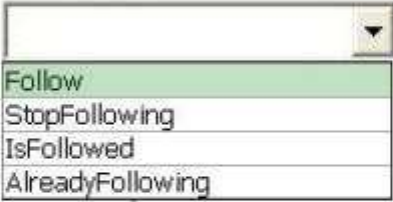
```

Correct Answer:

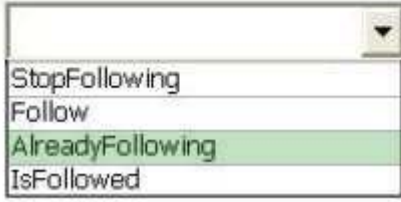
```

protected bool follow(ClientContext context,
    SocialFollowingManager fm, string user)
{
    SocialActorInfo info = new SocialActorInfo();
    info.AccountName = user

    ClientResult<SocialFollowResult>

    result = fm.  (info);

    context.ExecuteQuery();

    if (result.Value ==
        SocialFollowResult.  )
    {
        return true;
    }
    return false;
}

```

Section: [none]

Explanation

Explanation/Reference:

The SocialFollowResult type specifies the result status of a request to follow an actor. The SocialFollowResult type specifies the result status of a request to follow an actor.

OK, AlreadyFollowing, LimitReached, InternalError

AlreadyFollowing specifies that the current user was already following the specified actor and no actions were performed to meet the request.

SocialFollowingManager.**Follow** method adds the specified actor to the current user's list of followed actors.

<http://msdn.microsoft.com/en-us/library/jj195580%28v=office.12%29.aspx>

<http://msdn.microsoft.com/en-us/library/microsoft.sharepoint.client.social.socialfollowingmanager>

QUESTION 4

Question 4

You need to implement caching in your code.

Which caching option should you use?

- A. Object Cache
- B. Distributed Cache
- C. Windows Server AppFabric Cache
- D. ASP .NET cache

Correct Answer: C

Section: [none]

Explanation

Explanation/Reference:

QUESTION 5

Question 5

You need to notify Windows phone users about the new Windows phone app.

Which three actions should you perform in sequence?

(To answer, move the appropriate actions from the list of actions to the answer area and arrange them in the correct order)

Select and Place:

	Answer Area
Use JavaScript to set the value of the display property to block if the master page is being accessed by a Windows phone.	
Add a <div> tag that contains the notification message to the master page and set the default Cascading Style Sheets (CSS) display property to none .	
Edit the master page named Default.	
Set the value of the IncludedChannels property to WinPhone .	
Edit the master page named Phone.	
Add a device channel panel that contains the notification message to the master page.	
Set the value of the IncludedChannels property to Default .	

Correct Answer:

	Answer Area
Use JavaScript to set the value of the display property to block if the master page is being accessed by a Windows phone.	
	Edit the master page named Phone.
Add a <div> tag that contains the notification message to the master page and set the default Cascading Style Sheets (CSS) display property to none .	Add a device channel panel that contains the notification message to the master page.
Edit the master page named Default.	Set the value of the IncludedChannels property to WinPhone .
Set the value of the IncludedChannels property to Default .	

Section: [none]

Explanation

Explanation/Reference:

A device channel panel is a container that can be used on a master page or page layout when you want specific content to render based on the alias of a given device channel, or set of channels. For example, you may have a web part or control that you want revealed only on the desktop view of the site, and not on any mobile device. The device channel panel can enable you to encapsulate this web part in code, and enable you to render it only through a designated device channel.

From scenario:

- You create a Windows Phone app. When users access the site by using a Windows phone, a message must appear on every page of the mobile site. The message must notify users that they can download the Windows Phone app to their phone. The HTML that contains the message must render only to the Windows phones

QUESTION 6

Question 6

You need to resolve the image loading issue.

What should you do?

(Each correct answer presents a part of the solution. Choose all that apply)

- A. Set the size of the site collection object cache to at least 100MB.
- B. Enable the binary large object (BLOB) cache on each front-end web server.
- C. Activate the Content Organizer site feature.
- D. Enable authenticated cache profiles for the site output cache.
- E. Enable publishing features for the site collection.
- F. Set the default device channel to the active channel

Correct Answer: ABE

Section: [none]

Explanation

Explanation/Reference:

Image Renditions are one of the new capabilities of the SharePoint 2013 platform that can help you improve the user experience of your website by optimizing images. Using Image Renditions you can have original (large) images stored in your website and then define a number of scaled variants to be used throughout the website.

To minimize the performance impact caused by dynamically rendering images, the Image Renditions capability depends on the BLOB cache which caches generated renditions. For this mechanism to work properly, you have to enable the BLOB cache for your Web Application in web.config.

For image renditions to work you need to have three things done:

- A publishing site collection (or at least the publishing features enabled)
- A configured BLOB cache
- An Asset Library (recommended)

A: The object cache is used internally to optimize page rendering by storing properties of sites, page layouts, and pages. The object cache reduces the amount of traffic between the Web server and a SQL database. This results in higher throughput of rendered pages, thereby increasing the number of pages that can be delivered to clients.

B: SharePoint Server 2013 provides a disk-based cache that stores files that are used by web pages to help them load quickly in the browser, and reduces the load on the database server when it uses those files. These files are known as binary large objects (BLOBs), and the cache is known as the BLOB cache. The BLOB cache is stored directly on the hard disk drive of a front-end web server computer.

- When using Image Rendition you will have to enable BLOBCache to improve performance
- By using Device Channel Renditions you can create smaller image sizes designed specifically for mobile use. This allows the mobile user to browse the smaller version, increasing the overall performance for the device they are using. Image Rendition enables you to have large files stored within your website along with smaller scaled variations for mobile users.

When using Image Rendition you will have to enable BLOBCache to improve performance

<http://blog.mastykarz.nl/image-renditions-sharepoint-2013/>

<http://sharepoint.stackexchange.com/questions/72802/2013-image-renditions-no-edit-rendition-option>

From scenario:

- Some employees report that the home page loads slowly. You investigate the issue and find out that the size of some images is very large. You must enable image renditions on the intranet site collection.

QUESTION 7

Question 7

You need to raise the visibility of the sites.

What should you do?

- A. Enable the Reports and Data Search feature for the site collection.
- B. Create a custom timer job that generates the SiteMap.xml file in the root directory of the web application
- C. Add a Script Editor Web Part to the landing page of the publishing site. In the web part, enter the location of the SiteMap.xml file.
- D. In Internet Information Services (IIS), enable the SiteMap ISAPI filter for the web application
- E. Enable the Search Engine Sitemap Site Collection feature for the site collection.

Correct Answer: E

Section: [none]

Explanation

Explanation/Reference:

SiteCollection Feature:

Search Engine Sitemap Automatically generating a search engine sitemap containing all valid URLs in a SharePoint website on a recurring basis which can be used to improve search engine optimization.

Anonymous access must be enabled

Sitemap

SEO features are enabled by default when you provision your public website. As you might expect, they are accessed from the Site Settings page under Site Collection Administration. The features are divided into two groups, SEO settings and sitemap settings.

- Search engine optimization settings Includes two settings for analyzing and refining search results. The first enables you to verify ownership of your website so you can aggregate site statistics using webmaster tools provided by search engines. The second, canonical link filtering, allows for consolidation of related URLs so popularity rankings for a given page can be calculated accurately.
- Search engine sitemap settings Used to edit the robots.txt file to indicate which URLs on your site to exclude from search. Also generates a sitemap file automatically.

<http://office.microsoft.com/en-001/office365-sharepoint-online-enterprise-help/enable-or-disable-site-collection-features-HA102772720.aspx>

<http://office.microsoft.com/en-001/sharepoint-help/optimize-your-website-for-search-seo-HA102900145.aspx>

QUESTION 8

Question 8

You need to implement connection management for catalog connections.

Which method should you use? (Each correct answer presents part of the solution. Choose all that apply)

- A. public void UpdateCatalogConnection(CatalogConnectionSettings catalogInfo)
- B. public void OnPublishCatalog(string catalogPath)
- C. public void DeleteCatalogConnection(string catalogPath)
- D. public void SetCatalogConnection(string catalogPath, bool disconnect)

Correct Answer: AC

Section: [none]

Explanation

Explanation/Reference:

CatalogConnectionManager class manages catalog connections that are used in a site collection.

CatalogConnectionManager. **UpdateCatalogConnection** method updates the catalog that is currently connected to the site that is specified in the constructor.

```
public void UpdateCatalogConnection(CatalogConnectionSettings catalogInfo)
```

CatalogConnectionManager.**DeleteCatalogConnection** method removes a catalog connection and the associated search result source from the site specified in the constructor.

```
public void DeleteCatalogConnection(string catalogPath)
```

CatalogConnectionSettings class stores configuration information for the PublishingCatalogUtility object that is connected to a SPSite object.

<http://msdn.microsoft.com/en-US/library/microsoft.sharepoint.publishing.catalogconnectionmanager.aspx>

<http://msdn.microsoft.com/library/microsoft.sharepoint.publishing.catalogconnectionsettings.aspx>

http://msdn.microsoft.com/en-US/library/microsoft.sharepoint.publishing.publishingcatalogutility_members.aspx

From scenario:

- You must create a custom tool that site collection administrators use to manage catalog connections.
- You must define the API calls to remove (C) or update (A) existing catalog connections.

QUESTION 9

Question 9

You need to implement the social features.

How should you complete the relevant code?

(To answer, select the appropriate option from the dropdown list in the answer area)

Hot Area:

```

        feedManager =
            new SocialFeedManager(clientContext);

        SocialFeedOptions feedOptions = new SocialFeedOptions();
        feedOptions.MaxThreadCount = 10;
        ClientResult<SocialFeed> GetCurrentuserFeed =
            feedManager.GetFeed(
                SocialFeedType.Personal, feedOptions);

        ClientResult<SocialFeed> GetInformativeFeed =
            feedManager.GetFeed(
                SocialFeedType.TimeLine, feedOptions);

        ClientResult<SocialFeed> GetMyHRManagerFeed =
            feedManager.GetFeed(
                HRManager, feedOptions);

        clientContext.ExecuteQuery();

```

Correct Answer:


```

    feedManager =
        SocialFeed
        SocialFeedManager
        SocialFeedAttributes

    new (clientContext);
        SocialFeed
        SocialFeedManager
        SocialFeedAttributes

    SocialFeedOptions feedOptions = new SocialFeedOptions();
    feedOptions.MaxThreadCount = 10;
    ClientResult<SocialFeed> GetCurrentuserFeed =
        feedManager.GetFeed(
            SocialFeedType.Personal
            SocialFeedType.Likes
            SocialFeedType.Everyone
        , feedOptions);

    ClientResult<SocialFeed> GetInformativeFeed =
        feedManager.GetFeed(
            SocialFeedType.TimeLine
            SocialFeedType.Like
            SocialFeedType.News
        , feedOptions);

    ClientResult<SocialFeed> GetMyHRManagerFeed =
        feedManager.GetFeed(
            feedManager.GetFeedFor
            feedManager.GetUnreadMentionCount
        (HRManager, feedOptions);

    clientContext.ExecuteQuery();

```

Section: [none]

Explanation

Explanation/Reference:

SocialFeedManager class provides methods for creating posts, modifying threads, and accessing social feeds.

SocialFeedManager.**GetFeed** method gets a feed of activity by the current user, and optionally by followed people and content or by the user's organization.

```
public ClientResult<SocialFeed> GetFeed(SocialFeedType type, SocialFeedOptions options)
```

SocialFeedManager.**GetFeedFor** method gets a feed of activity by the specified user or team site.

```
public ClientResult<SocialFeed> GetFeedFor(string actorId, SocialFeedOptions options)
```

SocialFeedType enumeration specifies a SocialFeed type.

Personal - Activity by the current user.

News - Activity by the current user and by people and content that the user is following. Favors the most recent

activity within the specified time span.

<http://msdn.microsoft.com/en-us/library/microsoft.sharepoint.client.social.socialfeedmanager>
<http://msdn.microsoft.com/en-us/library/microsoft.sharepoint.client.social.socialfeedmanager.getfeed.aspx>
<http://msdn.microsoft.com/en-us/library/microsoft.sharepoint.client.social.socialfeedmanager.getfeedfor.aspx>
<http://msdn.microsoft.com/en-us/library/microsoft.sharepoint.client.social.socialfeedtype.aspx>

QUESTION 10

Question 10

You need to ensure that the data synchronization does not affect the end user experience on the intranet.

What should you do? (Each correct answer presents part of the solution. Choose all that apply)

- A. Add the following code to the application:

```
clientContext.ApplicationName = "Lucerne Win8 Sync";
```

- B. Add the following code to the application:

```
clientContext.ExecutingWebRequest += (s, e) => {  
    e.WebRequestExecutor.WebRequest.CookieContainer =  
        createCookieContainer();  
    e.WebRequestExecutor.WebRequest.UserAgent =  
        "Lucerne Publishing/1.0 (Lucerne Win8 Sync; Version 1.0.0.0)";  
};
```

- C. Run the following PowerShell cmdlet:

```
$spWebApp = Get-SPWebApplication -Identity http://intranet.lucernepublishing.com  
$rmSettings = Get-SPRequestManagementSettings -Identity $spWebApp  
$throttleCriteria = New-SPRequestManagementRuleCriteria  
-Property UserAgent -MatchType Regex -Value ".*Lucerne Win8 Sync*"  
Add-SPThrottlingRule -RequestManagementSettings $rmSettings  
Name "Lucerne Win8 Sync" -Criteria $throttleCriteria -Threshold 8
```

- D. Run the following PowerShell cmdlet :

```
$spWebApp = Get-SPWebApplication -Identity http://intranet.lucernepublishing.com  
$rmSettings = Get-SPRequestManagementSettings -Identity $spWebApp  
$throttlingRule = Get-SPThrottlingRule -RequestManagementSettings  
$rmSettings -Name "Lucerne Win8 Sync"  
$throttleCriteria = New-SPRequestManagementThrottleCriteria  
-Property UserAgent -MatchType Regex -Value ".*Lucerne Win8 Sync*"  
Set-SPThrottlingRule-Identity $throttlingRule -Criteria $throttleCriteria -Threshold 8
```

Correct Answer: AC

Section: [none]

Explanation

Explanation/Reference:

The **Get-SPRequestManagementSettings** cmdlet returns a Request Manager object which is base for performing any request manager management operation.

Use the **New-SPRequestManagementRuleCriteria** cmdlet to create criteria for the rule to match.

The **Add-SPThrottlingRule** cmdlet adds a new throttling rule for the farm by using the Name and RequestManagementSettings parameters.

<http://technet.microsoft.com/en-us/library/jj219501.aspx>
<http://technet.microsoft.com/en-us/library/jj219533.aspx>

<http://technet.microsoft.com/en-us/library/jj219592.aspx>

QUESTION 11

Question 11

You need to implement logging.

Which items should you implement?

(Each correct answer presents a complete solution. Choose all that apply)

- A. SPDiagnosticsServiceBase.WriteEvent
- B. Microsoft.SharePoint.Diagnostics.ULSLogEntry
- C. SPUserSid
- D. PortalLog.LogString
- E. SPAlertTemplate
- F. SPSecurity.RunWithElevatedPrivileges

Correct Answer: AB

Section: [none]

Explanation

Explanation/Reference:

EventLog.**WriteEvent** method writes a localized event entry to the event log.

PortalLog and its members are reserved for **internal use** and are not intended to be used in your code.

<http://msdn.microsoft.com/en-us/library/system.diagnostics.eventlog.writeevent%28v=vs.110%29.aspx>

<http://msdn.microsoft.com/en-us/library/microsoft.sharepoint.diagnostics.ulslogentry.aspx>

From Scenario

- You design an application framework. The framework is used by other developers on the team. The framework must include entry points that are used to log errors and exceptions You need the entry points.

Testlet 1

Contoso Ltd

Background

Contoso Ltd. is a global real estate company. You are hired to replace the company's existing ASP.NET website at <http://www.contoso.com> with a new SharePoint 2013 public-facing website. The site will display data about the company and information about residential properties that the individual agents in the company are selling. You have SharePoint Server environments for development, staging, and production.

Search

The website has the following requirements:

- Site visitors must be able to search for documents that are located anywhere on the site.
- When site visitors search for real estate properties, they must see information about a property.
- When a visitor searches for the word Guidelines, a PDF document named Real Estate Guidelines must appear at the top of the search results.

Search Engine Optimization

The company wants to ensure that the website displays prominently in Internet search results when people search for real estate.

The website has the following requirements:

- Internet search engines must properly rank pages so that the more popular pages on the site appear first in the Internet search engine results.
- SharePoint must generate the sitemap.xml and robots.txt files that are used by Internet search engines.

When an Internet search engine crawls the site, the search engine must recognize that the following URLs display information about different agents:

- <http://www.contoso.com/FindAnAgent?agentName=JohnDoe&officeId=Sacramento>
- <http://www.contoso.com/FindAnAgent?agentName=JohnDoe&officeId=Houston>

The search engine must recognize that the following URLs display the same information about the same agent:

- <http://www.contoso.com/FindAnAgent?agentName=JohnDoe&officeId=Sacramento>
- <http://www.contoso.com/FindAnAgent?agentName=JohnDoe&officeId=Sacramento&icerts=true>

Managed Metadata Service (MMS)

The MMS must include three term sets named Offices, Cities, and Features.

Offices Term Set

The Offices term set has the following requirements:

- The Offices term set must be a child of the group named Navigation.
- The Offices term set must be configured to use friendly URLs in the Offices sub-site.
- The name for each new office must be added to the Offices term set programmatically.
- The left navigation pane for the Offices page on the website must use the terms in the Offices term set.
- When the company opens a new office, a link for each new office must display in the left navigation pane.

Cities Term Set

The Cities term set has the following requirements:

- The Cities term set must contain a list that contains the names of major metropolitan areas.
- Many of the cities that are included in the Offices term set may also appear in the Cities term set, but the term sets may not be identical.
- If a city is required in both term sets, it must first be added to the Offices term set before it can be added to the Cities term set.
- If a term is changed in the Offices term set, it must automatically change in the Cities term set.
- The term Dallas must have a term ID of {b6ell481-3445-413c-9da0-bl5ae5d5cbd4}.

Features Term Set

You have an Excel file that contains a list of possible features for each property. The Features term set has the following requirements:

- The Features term set must contain the terms that describe details about each property, such as whether the building is a single family house or a condominium.
- The list of possible features must be programmatically imported from the Excel file into the term store in each server environment.

Web Application

The Internet Information Services (IIS) website contains a folder named _ConfigurationFiles. The web application has the following requirements:

- Anonymous access must be enabled on the web application.
- Internet search engines must index the site.
- Internet search engines must not index the files in the _ConfigurationFiles folder.

Site Collections and Content

The web application includes the following three site collections.

Board Member Site Collection

The Board Member site collection is only accessible to the board members so that they can view private company information.

The Board Member site collection has the following requirements:

- Only board members can log in to the site collection.
- A page within the site collection must display a list of all the board members.
- The website must be located at <http://www.contoso.com/sites/board>.

Internet Site Collection

Anonymous access is enabled on the Internet site collection. The Internet site collection has the following requirements:

- The site collection must include a sub-site named Offices.
- The URL of the Offices sub-site is <http://www.contoso.com/Offices>.
- Each office must have its own page on the site.
- The pages for each office must have the same style and structure.
- Each office page must contain a Content Search Web Part that displays a listing of all the properties that are being sold by agents in the office.
- The Content Search Web Part must use a custom display template named Real Estate Property to render search results when site visitors search for a property.
- The target page for terms in the Office term set must point to a page named Office.aspx that is in the Pages library of the Offices sub-site.
- The site must contain an About Us section that contains a Content Search Web Part that lists the members of the board of directors for the company.
- Each member of the board must have a page that contains biographical information about that board member.
- The list of board members must be available in the Board Member site collection.
- Site visitors must be able to view information about individual agents, including their contact information, certifications, and picture.
- When agents visit the Internet site collection, the agents may add information about each of the real estate properties that they are selling.
- The agents must be able to tag real estate properties according to their features.
- Real estate agents must enter real estate property information into a web form that is used specifically for data collection.

The web form must collect the following information:

- The property address.
- Up to five pictures of the property.
- The selling price.
- The number of bedrooms and bathrooms.
- The name of the real estate agent.
- Tags that will further describe the property.

Agent Site Collection

The Agent site collection is in the same web application and is accessible only to agents. The Agent site collection has the following requirements:

- The site collection must include a site that contains instructions for real estate agents that tells them how to add property information to the website.
- The website must be located at <http://www.contoso.com/sites/agents>.
- A Web Part must use the .NET client-side object model (CSOM) to retrieve all of the terms from only the Features term set.

Page Layouts and Web Parts

You must create the following page layouts: About Us, BiographyWithImage, BiographyNoImage, and Office. The page layouts have the following requirements:

- The About Us page layout must include a field to which the user may add Web Parts.
- The BiographyWithImage and BiographyNoImage page layouts must display biographical information about the board of directors.
- You must create a content type named Biography. BiographyWithImage and BiographyNoImage page layouts must use the Biography content type.
- The Office page layout must display information for each office and must use the fields that are defined in the Elements.xml file.

Web Parts

The Agent Web Part has the following requirements:

- The Web Part must display information about an individual agent.
- The Web Part must display information that is based on query string parameters.
- The URL of the page that hosts the Web Part must be <http://www.contoso.com/FindAnAgent>.

The following table lists the query string parameters and the way that each parameter must be used by the Web Part.

Parameter name	Parameter description	Required
agentName	The agent's name. When used in conjunction with the officeId parameter, the agentName parameter is used by the Web Part to determine which agent's name to display.	Yes
officeId	The unique identification number of the office to which the agent belongs. When used in conjunction with the agentName parameter, the officeId is used by the Web Part to determine which agent's information to display.	Yes
certs	A Boolean that indicates whether or not the agent's certifications should display.	No

Application Structure

- **Application Structure:**

Relevant portions of the markup and code for the solution are shown below. (Line numbers in the code segments are included for reference only and include a two-character prefix that denotes the specific file to which they belong.)

- **Elements.xml:**


```

EL01 <Field
ID="{dcdfd660-0d71-47b4-89a6-9a6deba6657b}"
Name="SiteColumn1"
DisplayName="Site Column 1"
Type="HTML"
RichText="TRUE"
RichTextMode="FullHTML"
Group="Custom Columns"/>
EL02 <Field
ID="{15468e57-ea01-4077-b074-d323ea98cb94}"
Name="SiteColumn2"
DisplayName="Site Column 2"
Type="Note"
RichText="TRUE"
RichTextMode="FullHTML"
Group="Custom Columns"/>

```

- **FeaturesTermSet.cs:**

```

FE01 ClientContext clientContext =
    new ClientContext("http://www.contoso.com");
FE02 TaxonomySession taxonomySession =
    TaxonomySession.GetTaxonomySession(clientContext);
FE03 TermStore termStore =
    taxonomySession.GetDefaultSiteCollectionTermStore();
FE04
FE05 clientContext.ExecuteQuery();

```

- **Import.cs:**

```

IM01 StreamReader reader = File.OpenText("C:\\Import.xls");
IM02 using (SPSite site = new SPSite("http://www.contoso.com"))
IM03 {
IM04     TaxonomySession taxonomySession = new TaxonomySession(site);
IM05     TermStore termStore = taxonomySession.TermStores[0];
IM06     Group group = termStore.Groups[0];
IM07
IM08 }

```

QUESTION 1

Question 1

You need to make updates when an agent saves information about a new office.

How should you complete the relevant code?

(To answer, drag the appropriate code segment to the correct location or location in the answer area. Each code segment may be used once, more than once, or not at all. You may need to drag the split bar between panes or scroll to view content)

Select and Place:

```
NavigationTermSet navTermSet =  
    NavigationTermSet.GetAsResolvedByWeb(termSet,  
    site.RootWeb, "SPNavigationProvider");
```

```
SPNavigationNode newNavigationNode =  
    new SPNavigationNode(newOffice, newOffice);
```

```
SPNavigationNode baseNode =  
    site.RootWeb.Navigation.Home;  
baseNode.AddAsLast(newNavigationNode);
```

```
NavigationTerm navTerm =  
    navTermSet.CreateTerm(newOffice,  
    NavigationLinkType.FriendlyUrl, Guid.NewGuid());
```

```
SPNavigationNodeCollection quickLaunchNodes =  
    site.RootWeb.Navigation.QuickLaunch;  
quickLaunchNodes.AddAsLast(newNavigationNode);
```

```
SPNavigationNode newNavigationNode =  
    new SPNavigationNode(newOffice, newOffice);  
navTermSet.CreateTerm(newNavigationNode);
```

Answer Area

```
public void AddOffice(string name)  
{  
    SPSite site = SPContext.Current.Site;  
    TaxonomySession taxSession = new TaxonomySession(site);  
    TermStore termStore = taxSession.TermStore;  
    Group termGroup = termStore.Groups["Office"];  
    TermSet termSet = termGroup.TermSets["Office"];  
  
    NavigationTermSet navTermSet =  
        NavigationTermSet.GetAsResolvedByWeb(termSet,  
        site.RootWeb, "SPNavigationProvider");  
  
    SPNavigationNode newNavigationNode =  
        new SPNavigationNode(name, name);  
    navTermSet.CreateTerm(newNavigationNode);  
  
    SPNavigationNodeCollection quickLaunchNodes =  
        site.RootWeb.Navigation.QuickLaunch;  
    quickLaunchNodes.AddAsLast(newNavigationNode);  
  
    termStore.CommitAll();  
}
```

Correct Answer:

```

NavigationTermSet navTermSet =
    NavigationTermSet.GetAsResolvedByWeb(termSet,
        site.RootWeb, "SPNavigationProvider");

SPNavigationNode newNavigationNode =
    new SPNavigationNode(newOffice, newOffice);

SPNavigationNode baseNode =
    site.RootWeb.Navigation.Home;
baseNode.AddAsLast(newNavigationNode);

NavigationTerm navTerm =
    navTermSet.CreateTerm(newOffice,
        NavigationLinkType.FriendlyUrl, Guid.NewGuid());

SPNavigationNodeCollection quickLaunchNodes =
    site.RootWeb.Navigation.QuickLaunch;
quickLaunchNodes.AddAsLast(newNavigationNode);

SPNavigationNode newNavigationNode =
    new SPNavigationNode(newOffice, newOffice);
navTermSet.CreateTerm(newNavigationNode);

```

Answer Area

```

public void AddOffice(string name)
{
    SPSite site = SPContext.Current.Site;
    TaxonomySession taxSession = new TaxonomySession(site);
    TermStore termStore = taxSession.TermStore;
    Group termGroup = termStore.Groups["Office"];
    TermSet termSet = termGroup.TermSets["Office"];

    NavigationTermSet navTermSet =
        NavigationTermSet.GetAsResolvedByWeb(
            site.RootWeb, "SPNavigationProvider");

    NavigationTerm navTerm =
        navTermSet.CreateTerm(name,
            NavigationLinkType.FriendlyUrl, Guid.NewGuid());

    termStore.CommitAll();
}

```

Section: [none]

Explanation

Explanation/Reference:

NavigationTermSet class specifies navigation behavior and properties for a TermSet object that is used to drive the navigation and friendly URLs for a website.

NavigationTermSetItem.**CreateTerm** method (String, NavigationLinkType, Guid) creates a new NavigationTerm object with the specified termName.

<http://msdn.microsoft.com/library/microsoft.sharepoint.publishing.navigation.navigationtermset.aspx>

QUESTION 2

Question 2

You need to add the field control to the About Us page layout.

Which control should you add?

- A. `<PublishingWebControls:RichHtmlField
 FieldName="dcdfd660-0d71-47b4-89a6-9a6deba6657b"
 runat="server"
 />`

- B. `<SharePointWebControls:NoteField
 FieldName="SiteColumn2"
 runat="server"
/>`
- C. `<PublishingWebControls:RichHtmlField
 FieldName="SiteColumn2"
 runat="server"
/>`
- D. `<PublishingWebControls:RichHtmlField
 FieldName="15468e57-ea01-4077-b074-d323ea98cb94" runat="server"/>`

Correct Answer: A

Section: [none]

Explanation

Explanation/Reference:

QUESTION 3

Question 3

You need to configure search engine optimization for the site.

What should you do? (Each correct answer presents part of the solution. Choose all that apply)

- A. Disable anonymous access to the web application while you make changes.
- B. Activate the Search Engine Sitemap feature in the site collection.
- C. Disable anonymous access to the site collection while you make changes.
- D. On the Search Engine Optimization Settings page, in the Include these metatags in pages text box, enter `<meta name="do-not-follow" value="/_Configuration Files/" />`
- E. Ensure that the Search Engine Sitemap job is running.
- F. On the Search Engine Sitemap Settings page, enter `Disallow: /_ConfigurationFiles/` to the exclusion rules.

Correct Answer: CE

Section: [none]

Explanation

Explanation/Reference:

Enabling canonical link parameter filtering means SharePoint will strip all parameters from links unless you specify otherwise when reporting URLs to search engines. In other words, you can explicitly state when parameters should be included with links and what those parameters should be.

If you want certain parameters to be tracked by search engines, click Filter link parameters, and then enter the parameters in the box. Be sure to separate parameters with a semicolon (for example, year;month).

Steps in the SEO process

- Configure SEO settings for the site collection.
- (B, not E) Configure sitemap settings for the site collection.
- Add and edit SEO metatags
- D (not F) Configure SEO settings for the site collection

Verify site ownership

- Sign in to the webmaster tools portal for your desired search engine and provide requested information

about your website.

- From your SharePoint Public Website home page, click Settings Small Settings gear that took the place of Site Settings > Site settings > Site Collection Administration > Search engine optimization settings.
- Click Include these meta tags in pages
- Copy the meta tag provided by the webmaster tools portal, and paste it into the box.
- Click OK.
- From the webmaster tools portal, ask the search engine to verify your ownership of this website.

<http://office.microsoft.com/en-001/sharepoint-help/optimize-your-website-for-search-seo-HA102900145.aspx>

Testing: Answer BCD

QUESTION 4

Question 4

You must create a search results page for the real estate properties that are available in each real estate office.

You need to display the search result for the internet site collection.

Which types of files should you create? (Each correct answer presents part of the solution. Choose all that apply)

- A. JavaScript (.js)
- B. Active Server Page (.aspx)
- C. Master Page (.master)
- D. HTML (.html)
- E. XML (.xml)

Correct Answer: BC

Section: [none]

Explanation

Explanation/Reference:

Master Page defines "placeholders" which can be overridden in child page
Content Page of a Master Page defaults to default.aspx

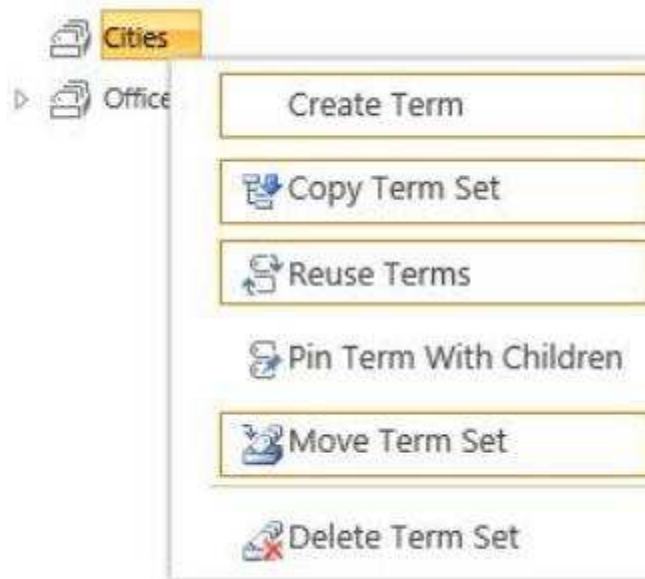
QUESTION 5

Question 5

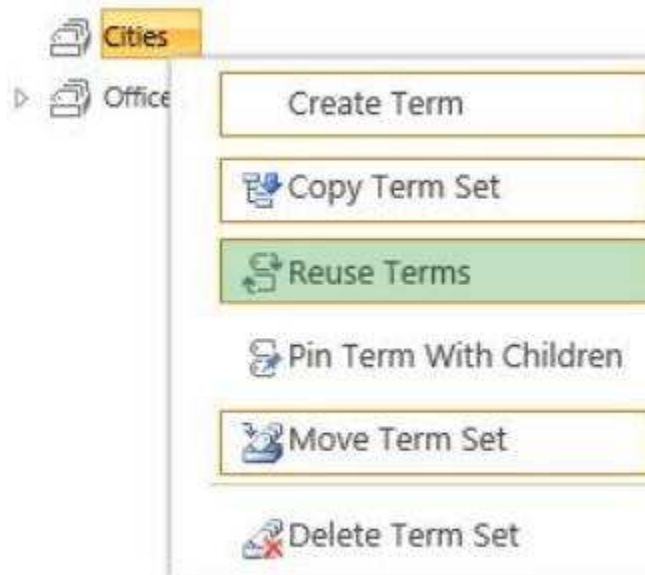
You need to add the city of Dallas to the Cities term set.

On the Term Store Management Tool page, which option should you select?
(To answer, select the appropriate option in the answer area.)

Hot Area:



Correct Answer:



Section: [none]

Explanation

Explanation/Reference:

QUESTION 6

Question 6

You need to configure search results to meet the requirements for the Real Estate Guidelines document.

On the Site Settings page in the top level site of the site collection, which link should you select?
(To answer, select the appropriate link in the answer area)

Hot Area:

Search

Result Sources

Result Types

Query Rules

Schema

Search Settings

Searchable columns

Search and offline availability

Configuration Import

Configuration Export

Site Collection Administration

Recycle bin

Search Result Sources

Search Result Types

Search Query Rules

Search Schema

Search Settings

Search Configuration Import

Search Configuration Export

Site collection features

Correct Answer:

Search

Result Sources

Result Types

Query Rules

Schema

Search Settings

Searchable columns

Search and offline availability

Configuration Import

Configuration Export

Site Collection Administration

Recycle bin

Search Result Sources

Search Result Types

Search Query Rules

Search Schema

Search Settings

Search Configuration Import

Search Configuration Export

Site collection features

Section: [none]

Explanation

Explanation/Reference:

<http://office.microsoft.com/en-001/office365-sharepoint-online-enterprise-help/manage-query-rules-HA103673857.aspx>



<http://www.gratisexam.com/>

QUESTION 7

Question 7

You need to create a link to the Dallas office page Which URL should you use?

- A. <http://www.contoso.com/Offices/Dallas.aspx>
- B. <http://www.contoso.com/Offices/Pages/Office.aspx>
- C. <http://www.contoso.com/Offices/Pages/Office.aspx?Office=Dallas>
- D. <http://www.contoso.com/Offices/Dallas>
- E. <http://www.contoso.com/Offices/Pages/Office.aspx?TermID=b6e11481-3445-413c-9da0-b15ae5d5cbd4>

Correct Answer: D

Section: [none]

Explanation

Explanation/Reference:

QUESTION 8

Question 8

You need to publish biographical information to the board member site collection.

Which five actions should you perform in sequence?

(To answer, move the appropriate actions from the list of actions to the answer area and arrange them in the correct order)

Select and Place:

	Answer Area
Activate the Cross-Site Publishing feature.	
Browse to the Internet site collection.	
Add the Content Search Web Part and configure it to display the biographical information.	
Browse to the Board Member site collection.	
Browse to the agents' site collection.	
Navigate to the library where the biography pages are stored and then enable the library as a catalog.	

Correct Answer:

Answer Area	
	Browse to the Internet site collection.
	Activate the Cross-Site Publishing feature.
	Navigate to the library where the biography pages are stored and then enable the library as a catalog.
	Browse to the Board Member site collection.
	Add the Content Search Web Part and configure it to display the biographical information.
Browse to the agents' site collection.	

Section: [none]

Explanation

Explanation/Reference:

From scenario:

Site Collections and Content

The web application includes the following three site collections.

1) Board Member Site Collection

The Board Member site collection is only accessible to the board members so that they can view private company information.

The Board Member site collection has the following requirements

- Only board members can log in to the site collection.
- A page within the site collection must display a list of all the board members.
- The website must be located at <http://www.contoso.com/sites/board>

2) Internet Site Collection

Requirements include:

Each member of the board must have a page that contains biographical information about that board member. The list of board members must be available in the Board Member site collection.

3) Agent Site Collection

- Main steps

Create site collections for cross-site publishing

(box 1, box2) Activate the Cross-Site Collection Publishing feature

Create and manage term sets for tagging content on authoring sites

Create catalog content by using SharePoint lists

(box 3) Share a library or list as a catalog

Make a term set available to other site collections

(box 5) Configure search for cross-site publishing

- Before you can use cross-site collection publishing to reuse content across site collections, you have to activate the Cross-Site Collection Publishing feature on the authoring site collection.

To activate the Cross-Site Collection Publishing feature

- Verify that the user account that performs this procedure is a site collection administrator on the authoring site collection.
- On the top-level site of the authoring site collection, on the Settings menu, click Site Settings
- On the Site Settings page, in the Site Collection Administration section, click Site collection features.
- On the Site Collection Features page, next to Cross-Site Collection Publishing, click Activate.

Cross-site publishing is a new publishing method that lets you create and maintain content in one or more authoring site collections and publish this content in one or more publishing site collections by using Search Web Parts. Cross-site publishing complements the already existing publishing method, author-in-place, where you use a single site collection to author content and make it available to readers of your site.

Reference Configure cross-site publishing in SharePoint Server 2013

QUESTION 9

Question 9

You need to configure search engine optimization for the site collection.

On the Search Engine Optimization Settings page, what should you do?
(Each correct answer presents part of the solution. Choose all that apply)

- A. Select the Do not filter link parameters option.
- B. In the Filter link parameters text box, enter agentName&officeld&certs
- C. In the Filter link parameters text box, enter agentName;officeld
- D. In the Filter link parameters text box, enter agentName&officeld
- E. Select the Filter link parameters option
- F. In the Filter link parameters text box, enter agentName;officeld;certs

Correct Answer: BE

Section: [none]

Explanation

Explanation/Reference:

Sign in to the webmaster tools portal for your desired search engine and provide requested information about your website.

From your SharePoint Public Website home page, click Settings Small Settings gear that took the place of Site Settings. > Site settings > Site Collection Administration > Search engine optimization settings.

Click Include these meta tags in pages.

Copy the meta tag provided by the webmaster tools portal, and paste it into the box.

Click OK.

From the webmaster tools portal, ask the search engine to verify your ownership of this website.

Note: After verification is complete, you'll want to leave the meta tag in place because search engines periodically repeat site checks to ensure that ownership data is current.

<http://office.microsoft.com/en-001/sharepoint-help/optimize-your-website-for-search-seo-HA102900145.aspx>

From scenario:

The search engine must recognize that the following URLs display the same information about the same agent

<http://www.contoso.com/FindAnAgent?agentName=JohnDoe&officeld=Sacramento>

<http://www.contoso.com/FindAnAgent?agentName=JohnDoe&officeld=Sacramento&icerts=true>

QUESTION 10

Question 10

You need to configure the content types and page layouts that are used to display information about the members of the board of directors.

How should you configure the content types and page layouts?

(To answer, drag the appropriate content types to the correct location in the answer area. Each content type may be used once, more than once, or not at all. You may need to drag the split bar between panes or scroll to view content)

Select and Place:

Answer Area		
	Inherits from this content type	Associated with this content type
Biography content type		
Biography With Image page layout		
Biography No Image page layout		

Biography

Biography No Image

Biography With Image

Page

Page Layout

Correct Answer:

Answer Area		
	Inherits from this content type	Associated with this content type
Biography content type	Page	
Biography With Image page layout	Page Layout	Biography
Biography No Image page layout	Page Layout	Biography

Biography

Biography No Image

Biography With Image

Page

Page Layout

Section: [none]

Explanation

Explanation/Reference:

Testlet 1

Adventure Works

Background

Adventure Works needs to develop a solution that tracks internal and external projects for both on-site and off-site employees. The company plans to create a project tracking site by using SharePoint.

Business Requirements

The company has the following requirements:

- The solution must use data from an existing line of business (LOB) system.
- The solution must provide secure access to data.
- The solution must allow users to search for projects by department or job role.
- The portal for the solution must contain an overview of all the active projects.
- Navigation for all sites must be managed centrally.
- Project members must be notified when project information changes.
- Project leads must be able to view a list of departments and job roles.
- Project leads must be notified when project tasks change.
- Users must be able to filter project documents by file type.

Technical Requirements

The solution must include the following components.

Component type	Name	Description
Custom List app	Admin	Allows users to create and enter project information.
Document Library app	Project Documents	Allows users to upload and download files that are related to projects.
Page	Project Information	Allows users to view project information.
Tasks app	Tracking	Allows users to create and manage project tasks.
External Content Type	Project	Allows the app to connect to external data.

Business Connectivity Services (BCS)

- You must use BCS to connect to a SQL Server database to retrieve project information and display it on a Project Information Page.
- The Admin Custom List app must use a remote event receiver to send an email message to each team member when information is updated.
- The Project external content type must use the root namespace proj_info.

Managed Metadata Service (MMS)

You must use MMS to ensure that team members can search and filter project information.

- Managed data must be grouped and controlled by department leaders. The project lead must have full control of the term store. The project leader creates groups for each department and assigns the leader of each department to the group manager role.

- Group managers must be able to grant Contribute permissions to the remaining team members in their department.
- You must create a Department term set to store team member roles and organize them by department types. The import file for the Department term set is the default for all new projects. The import file contains terms for System Architect, Programmer, Producer, and Manager. Each term is contained within two parent groups, Engineering or Production. Managers are members of the Production group only. All of the parent groups use a shared root-level term.
- You must create a site collection to store content that is used across multiple site collections. The site collection stores term sets for cross-site navigation and searches.
- The navigation site must use the URL <http://adventureworks/sites/navigation>.
- The publishing site must use the URL <http://adventureworks/sites/portal>.
- Navigation links on the top and left sides of each page must use term sets.
- The Document Library app named Project Documents must include a local term set for document types. The term set must contain the default terms .docx, .png, and .jpg.
- You must develop a console app to print the current term sets and each root term for the app by using the following style: TermSet: name Term: name

Application Structure

▪ Application Structure:

Relevant segments of the app files are shown below: (Line numbers in the code segments are included for reference only and include a two-character prefix that denotes the specific file to which they belong.)

▪ DocumentlibApp.cs:

```

DL01 private void CreateDocumentTypeTermSet(string siteUrl)
DL02 {
DL03     var contextToken = TokenHelper.GetContextTokenFromRequest(Page.Request);
DL04     var hostWeb = Page.Request["SPHostUrl"];
DL05
DL06     using (var clientContext = TokenHelper.GetClientContextWithContextToken
        (hostWeb, contextToken, Request.Url.Authority))
DL07     {
DL08         TaxonomySession taxonomySession =
            TaxonomySession.GetTaxonomySession(clientContext);
DL09         clientContext.Load(taxonomySession,
DL10             ts => ts.TermStores.Include(
DL11                 store => store.Name,
DL12                 store => store.Groups.Include(
DL13                     group => group.Name)))
DL14             clientContext.ExecuteQuery();
DL15
DL16         if (taxonomySession != null)
DL17         {
DL18
DL19             if (termStore != null)
DL20             {
DL21                 TermGroup myGroup = termStore.CreateGroup("DocLibAppGroup", Guid.NewGuid
DL22                 (), 1033);
DL23                 TermSet myTermSet = myGroup.CreateTermSet("Document Types", Guid.NewGuid
DL24                 (), 1033);
DL25                 myTermSet.Description = "File Types";
DL26                 ...
DL27                 clientContext.ExecuteQuery();
DL28             }
DL29         }
DL30     }
DL31
DL32 private void DumpTaxonomyItems(string siteUrl)
DL33
DL34     ClientContext clientContext = new ClientContext(siteUrl);
DL35
DL36     TermStore termStore = taxonomy.GetDefaultSiteCollectionTermStore();
DL37     clientContext.Load(termStore,
DL38         store => store.Name,
DL39         store => store.Groups.Include(
DL40             group => group.Name,
DL41             group => group.TermSets.Include(
DL42                 termSet => termSet.Name,
DL43                 termSet => termSet.Terms.Include(
DL44                     term => term.Name)))));
DL45     clientContext.ExecuteQuery();
DL46
DL47     if (taxonomy != null)
DL48     {
DL49         if (termStore != null)
DL50         {
DL51             foreach (TermGroup group in termStore.Groups)
DL52             {

```

```

DL53         Console.WriteLine("Group " + group.Name);
DL54     foreach( TermSet termSet in group.TermSets )
DL55     {
DL56
DL57         foreach(Term term in termSet.Terms)
DL58         {
DL59
DL60         }
DL61     }
DL62 }
DL63 }
DL64 }
DL65 }
DL66
DL67 private void TranslateFile(string culture, string input, string output,
string name)
DL68 {
DL69     var contextToken = TokenHelper.GetContextTokenFromRequest(Page.Request);
DL70     var hostWeb = Page.Request["SPHostUrl"];
DL71     using (var clientContext = TokenHelper.GetClientContextWithContextToken
(hostWeb, contextToken, Request.Url.Authority))
DL72     {
DL73
DL74
DL75         job.AddFile(input, output);
DL76         job.Name = name;
DL77
DL78
DL79
DL80
DL81         clientContext.Load(job);
DL82         clientContext.ExecuteQuery();
DL83     }
DL84 }

```

- TeamRemoteEventReceiver.cs:

```

RR01 public class RemoteEventReceiver1 : IRemoteEventService
RR02 {
RR03     public SPRemoteEventResult ProcessEvent(SPRemoteEventProperties properties)
RR04     {
RR05
RR06         return new SPRemoteEventResult();
RR07     }
RR08
RR09     public void ProcessOneWayEvent(SPRemoteEventProperties properties)
RR10     {
RR11
RR12     }
RR13
RR14     public static void ListRemoteEventReceiver(SPRemoteEventProperties properties)
RR15     {
RR16         ...
RR17     }
RR18 }

```

• **TodoEventReceiver.cs:**

```

ER01 using System;
ER02 using System.Security.Permissions;
ER03 using Microsoft.SharePoint;
ER04 using Microsoft.SharePoint.Utilities;
ER05 using Microsoft.SharePoint.Workflow;
ER06 namespace Adventureworks
ER07 {
ER08
ER09     {
ER10         public override void ItemAdded(SPItemEventProperties properties)
ER11         {
ER12             base.ItemAdded(properties);
ER13         }
ER14     }
ER15 }

```

• **ImportTermSet.cs:**

```

IT01 termStore = Taxosession.TermStores[0];
IT02 termGroup = termStore.CreateGroup("MyGroup");
IT03 FileStream TermsFile = new FileStream(CSVFilePath, FileMode.Open, FileAccess.Read);
IT04 reader = File.OpenText(CSVFilePath);
IT05 bool allTermsAdded; string errorMessage = "";
IT06 ImportManager importManager = termStore.GetImportManager();
IT07

```

QUESTION 1

Question 1

You need to implement the notifications for the custom list app named Admin.

Which code segment should you add at line ER08?

- A. public class EventReceiver1
- B. public class EventReceiver1 : SPListEventReceiver
- C. public class EventReceiver1 : SPItemEventReceiver
- D. public class EventReceiver1 : SPEventReceiverBase

Correct Answer: C

Section: [none]

Explanation

Explanation/Reference:

SPItemEventReceiver class provides methods for trapping events that occur to items.

ItemAdded Handles the asynchronous event that occurs after an item is added.

<http://msdn.microsoft.com/en-us/library/microsoft.sharepoint.spitemeventreceiver.aspx>

QUESTION 2

Question 2

You need to implement the term set import file to enable item assignments to be filtered.

How should you structure the term sets?

(To answer, drag the appropriate term to the correct level in the answer area. Each term may be used once, more than once, or not at all. You may need to drag the split bar between panes or scroll to view content.)

Select and Place:

Department

Engineering

Manager

Producer

Production

System Architect

Answer Area

Level 1 Term	Level 2 Term	Level 3 Term
	Engineering	System Architect
	Engineering	Programmer
Department	Production	
Department		Manager

Correct Answer:

Answer Area		
Level 1 Term	Level 2 Term	Level 3 Term
Department	Engineering	System Architect
Department	Engineering	Programmer
Department	Production	Producer
Department	Production	Manager

Section: [none]

Explanation

Explanation/Reference:

QUESTION 3

Question 3

You need to ensure that end users can access the project's external content type and model by using the provided naming specifications

Which properties in the external content-type editor must you set when you create the external content type in SharePoint Designer?

(Each correct answer presents part of the solution. Choose all that apply)

- A. Set the value of the Display Name property to Project.
- B. Set the value of the Namespace property to http://adventureworks/sites/portal.
- C. Set the value of the Namespace property to proj_info.
- D. Set the value of the Name property to proj_info.
- E. Set the value of the Display Name property to proj_info.
- F. Set the value of the Name property to Project.

Correct Answer: CF

Section: [none]

Explanation

Explanation/Reference:

From scenario:

C: The Project external content type must use the root namespace proj_info.

E:

Component type	Name	Description
Custom List app	Admin	Allows users to create and enter project information.
Document Library app	Project Documents	Allows users to upload and download files that are related to projects.
Page	Project Information	Allows users to view project information.
Tasks app	Tracking	Allows users to create and manage project tasks.
External Content Type	Project	Allows the app to connect to external data.

QUESTION 4

Question 4

You need to create the term set for the Document Library app named Project Documents.

What should you do? (Each correct answer presents part of the solution. Choose all that apply)

- A. Insert the following code segment into line DL18
`TermStore termStore = taxonomySession.GetDefaultKeywordsTermStore();`
- B. Insert the following code segment into line DL18
`TermStore termStore = taxonomySession.GetDefaultSiteCollectionTermStore();`
- C. Insert the following code segment into line DL24
`myTermSet.CreateTerm(".png", 1033, Guid.NewGuid());`
- D. Insert the following code segment into line DL24
`myTermSet.CreateTerm(".bmp", 1033, Guid.NewGuid());`

Correct Answer: AC

Section: [none]

Explanation

Explanation/Reference:

From scenario:

- You must develop a console app to print the current term sets and each root term for the app by using the following style TermSet:name Term: name
- (A, C, Not B, not D) The Document Library app named Project Documents must include a local term set for document types. The term set must contain the default terms .docx, .png, and .jpg.

QUESTION 5

Question 5

You need to implement the site collection for managed navigation

Which three actions should you perform in sequence?

(To answer, move the appropriate actions from the list of actions to the answer area and arrange them in the correct order)

Select and Place:

	Answer Area
Create a Product Catalog.	
Add relevant terms and content types.	
Create a new Term Set.	
Start a full crawl from the Search Service Applications.	

Correct Answer:

	Answer Area
	Create a Product Catalog.
	Create a new Term Set.
	Add relevant terms and content types.
Start a full crawl from the Search Service Applications.	

Section: [none]

Explanation

Explanation/Reference:

If you will use cross-site publishing, you should also know the structure of the tagging term sets, and you should have an idea of which pages will be used to display which catalog items. You should also know the navigation hierarchy that you want to implement for your site.

<http://msdn.microsoft.com/en-us/library/office/fp123530.aspx>

<http://en.share-gate.com/blog/migrate-sharepoint-2013-product-catalog-not-just-products>

<http://en.share-gate.com/blog/migrate-sharepoint-2013-what-is-product-catalog>

QUESTION 6

Question 6

You need to configure a new site collection in Central Administration. You will use the site collection to manage navigation terms.

What should you do?

- A. Create a site collection by using the Publishing Portal template
- B. Create a site collection by using the Enterprise Search Center template
- C. Create a site collection by using the Records Center template
- D. Set the website address to <http://adventureworks.com/sites/navigation>

Correct Answer: A

Section: [none]

Explanation

Explanation/Reference:

<http://technet.microsoft.com/de-de/library/dn194310.aspx>

QUESTION 7

Question 7

You need to implement the remote event receiver for the Admin Custom List app

What should you do?

- A. Insert the following code segment at line RR05:
ListRemoteEventReceiver(properties);
- B. Insert the following code segment at line RR05:
ProcessOneWayEvent(properties);
- C. Insert the following code segment at line RR11:
ProcessEvent(properties);
- D. Insert the following code segment at line RR11:
ListRemoteEventReceiver(properties);

Correct Answer: D

Section: [none]

Explanation

Explanation/Reference:

[OperationContractAttribute] SPRemoteEventResult **ProcessEvent**(SPRemoteEventProperties properties)
ProcessEvent This is a **synchronous** event handler. Use it to call code when a “**before**” event occurs .

[OperationContractAttribute(IsOneWay = true)] void **ProcessOneWayEvent**(SPRemoteEventProperties properties)
ProcessOneWayEvent This is an **asynchronous** event handler. Use it to call code when an “**after**” event occurs .

<http://msdn.microsoft.com/en-us/library/microsoft.sharepoint.client.eventreceivers.iremoteeventservice.aspx>

Testing: Answer B

QUESTION 8

Question 8

You need to configure permissions for the publishing portal in the Term Store Manager

What should you do?

- A. Add the URL <http://adventureworks.com/sites/portal> to the site collection access list.
- B. Add the URL <http://adventureworks.com/sites/portal> to the Contributors list.
- C. Add the URL <http://adventureworks.com/navigation> to the site collection access list.
- D. Add the URL <http://adventureworks.com/pages/navigation.aspx> to the site collection access list.

Correct Answer: B

Section: [none]

Explanation

Explanation/Reference:

QUESTION 9

Question 9

You need to print out the terms and term sets for the Document Library app named Project Documents.

What should you do? (Each correct answer presents part of the solution. Choose all that apply)

- A. Insert the following code segment at line DL59:
`Console.WriteLine("TermSet: " + termSet.Name + "Term: " + term.Name);`
- B. Insert the following code segment at line DL70:
`Console.WriteLine("TermSet: " + termSetName);`
- C. Insert the following code segment at line DL35:
`TaxonomySession taxonomy = TaxonomySession.GetTaxonomySession(clientContext);`
- D. Insert the following code segment at line DL56:
`Console.WriteLine("TermSet: " + termSetName);`
- E. Insert the following code segment at line DL35:
`TaxonomyItem taxonomy = TaxonomySession.GetTaxonomySession(clientContext);`

Correct Answer: AC

Section: [none]

Explanation

Explanation/Reference:

From scenario:

- You must develop a console app to print the current term sets and each root term for the app by using the following style TermSet: name Term: name
- You must create a Department term set to store team member roles and organize them by department types The import file for the Department term set is the default for all new projects. The import file contains terms for System Architect, Programmer, Producer, and Manager Each term is contained within two parent groups, Engineering or Production. Managers are members of the Production group only. All of the parent groups use a shared root-level term.

Testking: Answer AE

QUESTION 10

Question 10

You need to configure permission roles for the team members.

What should you do?

(To answer, drag the appropriate role to the correct location in the answer area. Each role may be used once, more than once, or not at all. You may need to drag the split bar between panes or scroll to view content)

Select and Place:

Answer Area	
Team Member Title	Permission Role
Project Leader	
Department Asset Lead	
Team Members	
Department Programming Lead	

Correct Answer:

Answer Area	
Team Member Title	Permission Role
Project Leader	Term Store Administrators
Department Asset Lead	Group Managers
Team Members	Contributors
Department Programming Lead	Group Managers

Section: [none]

Explanation

Explanation/Reference:

Question Set 1

QUESTION 1

Question 1

You connect to a front-end web server in a SharePoint farm for a company named Contoso, Ltd.

You start the SharePoint Management Shell by using an account that has administrator permissions for the user-profile store. You use Windows PowerShell to create a User Profile property. You add the profile type and sub type to the User Profile property.

You run the following Windows PowerShell cmdlets

```
$ns | add-types "Microsoft.Office.Server.UserProfiles"  
$site = Get-SPSite "https://internal.contoso.com"  
$ctx = Get-SPServiceContext($site)
```

How should you complete the relevant Windows PowerShell cmdlets?

(To answer, drag the appropriate code segment to the correct location or locations in the answer area. Each code segment may be used once, more than once, or not at all. You may need to drag the split bar between panes or scroll to view content.)

Select and Place:

	Answer Area
GetProfileSubType	\$mgr1 = new \$ns. [] (\$c
GetProfileTypeProperties	\$mgr2 = \$mgr1. []
GetPropertyByName	\$mgr3 = \$mgr2.GetCoreProperties()
ProfilePropertyManager	\$mgr4 = \$mgr2. []
UserProfileConfigManager	(\$ns.ProfileType::User)
	\$mgr5 = \$ns.ProfileSubTypeManager::Get(\$ctx)
	\$profileName = \$ns.ProfileSubtypeManager::GetDefaultProfile \$ns.ProfileType::User
	\$type1 = \$mgr5. [] (\$pre
	\$mgr6 = \$type1.Properties
	\$prop1 = \$mgr6. [] ("Cu

Correct Answer:

GetProfileSubType

GetProfileTypeProperties

GetPropertyByName

ProfilePropertyManager

UserProfileConfigManager

Answer Area

\$mgr1 = new \$ns.

UserProfileConfigManager

(\$c

\$mgr2 = \$mgr1.

ProfilePropertyManager

\$mgr3 = \$mgr2.GetCoreProperties()

\$mgr4 = \$mgr2.

GetProfileTypeProperties

(\$ns.ProfileType::User)

\$mgr5 = \$ns.ProfileSubTypeManager::Get(\$ctx)

\$profileName = \$ns.ProfileSubtypeManager::GetDefaultProfile

\$ns.ProfileType::User

\$type1 = \$mgr5.

GetProfileSubType

(\$pr

\$mgr6 = \$type1.Properties

\$prop1 = \$mgr6.

GetPropertyByName

("Cu

Section: [none]

Explanation

Explanation/Reference:

QUESTION 2

Question 2

You develop a SharePoint app by using the client-side object model (CSOM)

On each page of the app, you need to display the user profile picture for the user that is currently logged in.

How should you complete the relevant code? (To answer, select the appropriate option from each drop-down list in the answer area)

Hot Area:

```

function sharePointReady() {
    context = new SP.ClientContext.get_current();

    getProfilePic();
}

var a;
var b;
function getProfilePic() {

    a = new SP.UserProfiles.  ;
    SocialFollowingManager(context)
    UserProfile()
    PeopleManager(context)

    b = a.getMyProperties();
    context.load(b);
    context.executeQueryAsync(function () {
        if (b) {

            var c =  ;
            a.get_pictureUrl()
            b.get_pictureUrl()
            b.get_personalUrl()
            b.get_userUrl()

            $("#profilePic").attr(  );
            "src", c
            "src", b
            "src", pictureUrl
            "profilePic", c

        }
    }, onFail);
}

```


Correct Answer:

```

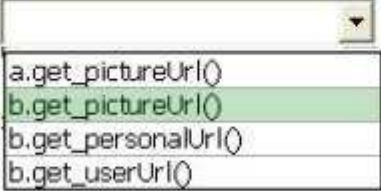
function sharePointReady() {
    context = new SP.ClientContext.get_current();

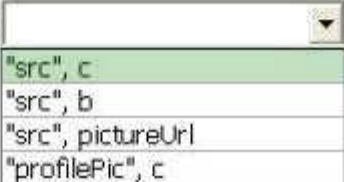
    getProfilePic();
}

var a;
var b;
function getProfilePic() {

    a = new SP.UserProfiles.  ;

    b = a.getMyProperties();
    context.load(b);
    context.executeQueryAsync(function () {
        if (b) {

            var c =  ;

            $("#profilePic").attr(  );

        }
    }, onFail);
}

```

Section: [none]

Explanation

Explanation/Reference:

var object = new SP.UserProfiles.**PeopleManager**(context) initializes a new instance of the PeopleManager object.

getMyProperties gets user properties for the current user.

SP.UserProfiles.**PersonProperties** represents user properties.

PersonProperties.**pictureUrl** property gets the URL of the user's profile picture.

<http://msdn.microsoft.com/en-us/library/jj667813.aspx>

<http://msdn.microsoft.com/en-us/library/jj712733.aspx>

QUESTION 3

Question 3

You develop a SharePoint-hosted app. The app includes the following code segment (Line numbers are included for reference only)

```

01 var context;
02 var b;
03 var user;
04 $(document).ready(function () {
05     var e = ExecuteOrDelayUntilScriptLoaded(sharePointReady, "sp.userprofiles.js");
06 });
07 function sharePointReady() {
08     context = new SP.ClientContext.get_current();
09     getProperties();
10 }
11 function getProperties() {
12
13     b = a.getMyProperties();
14     context.load(b);
15     context.executeQueryAsync(onGetPropertiesSuccess, onGetPropertiesFail);
16 }

```

The app must display user profile data for the user that is logged in. The user profile data must include the PreferredName, Department, and WorkPhone properties.

You need to ensure that the app displays the required user profile data.

Which code segment should you insert at line 12?

- A. var a = new SP.UserProfiles.UserProfile();
- B. var a = new SP.UserProfiles.SocialFollowingManager(context);
- C. var a = SP.UserProfiles.Profileloader.GetProfileLoader(context);
- D. var a = new SP.UserProfiles.PeopleManager(context);

Correct Answer: D

Section: [none]

Explanation

Explanation/Reference:

var object = new SP.UserProfiles.**PeopleManager**(context) initializes a new instance of the PeopleManager object.

getMyProperties gets user properties for the current user.

<http://msdn.microsoft.com/en-us/library/jj712733.aspx>

QUESTION 4

Question 4

You develop a SharePoint app that includes microblog posts and conversations for a company named Contoso, Ltd.

You must use various programming object models to determine the number of unread mentions in microblog posts for the current user.

You need to call methods for different programming object models.

How should you create the method calls?

(To answer, drag the appropriate code segments to the correct location or locations in the answer area. Each code segment may be used once, more than once, or not at all. You may need to drag the split bar between panes or scroll to view content)

Select and Place:

GetMentions()

getMentions()

GetUnreadMentionCount()

getUnreadMentionCount()

GET https://www.contoso.com/_api/social.feed/my/MentionFeed

GET https://www.contoso.com/_api/social.feed/my/UnreadMentionCount

Answer Area

CSOM:

JSOM:

REST:

SSOM:

Correct Answer:

GetMentions()

getMentions()

GetUnreadMentionCount()

getUnreadMentionCount()

GET https://www.contoso.com/_api/social.feed/my/MentionFeed

GET https://www.contoso.com/_api/social.feed/my/UnreadMentionCount

Answer Area

CSOM: GetUnreadMentionCount()

JSOM: getUnreadMentionCount()

REST: GET https://www.contoso.com/_api/social.feed/my/UnreadMentionCount

SSOM: GetUnreadMentionCount()

Section: [none]

Explanation

Explanation/Reference:

SocialFeedManager.**GetUnreadMentionCount** method gets the count of unread mentions for the current user.
SP.Social.SocialFeedManager.**getUnreadMentionCount**(sp.userprofiles) method gets the count of unread mentions for the current user.

<http://msdn.microsoft.com/en-us/library/microsoft.sharepoint.client.social.socialfeedmanager.getunreadmentioncount>
<http://msdn.microsoft.com/en-us/library/office/jj679621.aspx>

QUESTION 5**Question 5**

You create term sets and multi-lingual labels for a site collection. The default locale, language, and culture for the term sets are set to English. You develop a console application to create labels for a term named Memory. The console application uses the English locale. You develop the following labels for the term named Memory.

Culture	Default value	Synonyms
English	memory	storage
French	mémoire	stockage
Italian	memoria	conservazione
Spanish	memoria	almacenamiento
German	speicher	lagerung

You need to create German labels for the term named Memory.

How should you complete the relevant code? (To answer, select the appropriate code segment from each drop-down list in the answer area)

Hot Area:


```

var d = c.GetAllTerms();
ctx.Load(d, s => s.Include(t => t.Name));
ctx.ExecuteQuery();

var e = d.SingleOrDefault(x => x.Name == );

e.CreateLabel(,
    
    "memoria"
    "mémoire"
    "speicher"

    
    "speicher"
    "storage"
    "memory"

    , true);

System.Globalization.CultureInfo.CreateSpecificCulture("it-IT").LCID
System.Globalization.CultureInfo.CreateSpecificCulture("de-DE")
System.Globalization.CultureInfo.CreateSpecificCulture("de-DE").LCID
System.Globalization.CultureInfo.CurrentCulture.LCID

e.CreateLabel("lagerung",
    System.Globalization.CultureInfo.CreateSpecificCulture("de-DE").LCID,
    )
ctx.ExecuteQuery();

true
false

```

Correct Answer:

```

var d = c.GetAllTerms();
ctx.Load(d, s => s.Include(t => t.Name));
ctx.ExecuteQuery();

var e = d.SingleOrDefault(x => x.Name == );

e.CreateLabel(,
    
    "memoria"
    "mémoire"
    "speicher"

    
    "speicher"
    "storage"
    "memory"

    , true);

System.Globalization.CultureInfo.CreateSpecificCulture("it-IT").LCID
System.Globalization.CultureInfo.CreateSpecificCulture("de-DE")
System.Globalization.CultureInfo.CreateSpecificCulture("de-DE").LCID
System.Globalization.CultureInfo.CurrentCulture.LCID

e.CreateLabel("lagerung",
    System.Globalization.CultureInfo.CreateSpecificCulture("de-DE").LCID,
    )
ctx.ExecuteQuery();

true
false

```

Section: [none]

Explanation

Explanation/Reference:

QUESTION 6

Question 6

A company uses SharePoint to manage a large number of documents.

The Document ID Service feature is enabled. You need to create a custom class that generates a unique ID for each document.

How should you complete the class definition?

(To answer, select the appropriate code segment from each drop-down list in the answer area)

Hot Area:

```
using [ ] ;

public class Custom : [ ]
{
    ...
}
```

Microsoft.SharePoint
Microsoft.Office.Server
Microsoft.SharePoint.Taxonomy
Microsoft.Office.DocumentManagement
Microsoft.Office.DocumentManagement.Server

SPItem.Id
DocumentId
SPFile.UniqueId
DefaultDocument
DocumentIdProvider

Correct Answer:

```
using [ ] ;

public class Custom : [ ]
{
    ...
}
```

Microsoft.SharePoint
Microsoft.Office.Server
Microsoft.SharePoint.Taxonomy
Microsoft.Office.DocumentManagement
Microsoft.Office.DocumentManagement.Server

SPItem.Id
DocumentId
SPFile.UniqueId
DefaultDocument
DocumentIdProvider

Section: [none]

Explanation

Explanation/Reference:

DocumentIdProvider class represents the **base abstract** class for implementing a Document ID generator.

Namespace: Microsoft.Office.**DocumentManagement**

<http://msdn.microsoft.com/en-us/library/microsoft.office.documentmanagement.documentidprovider.aspx>

QUESTION 7

Question 7

You implement eDiscovery in SharePoint to access Exchange Online mailbox data.

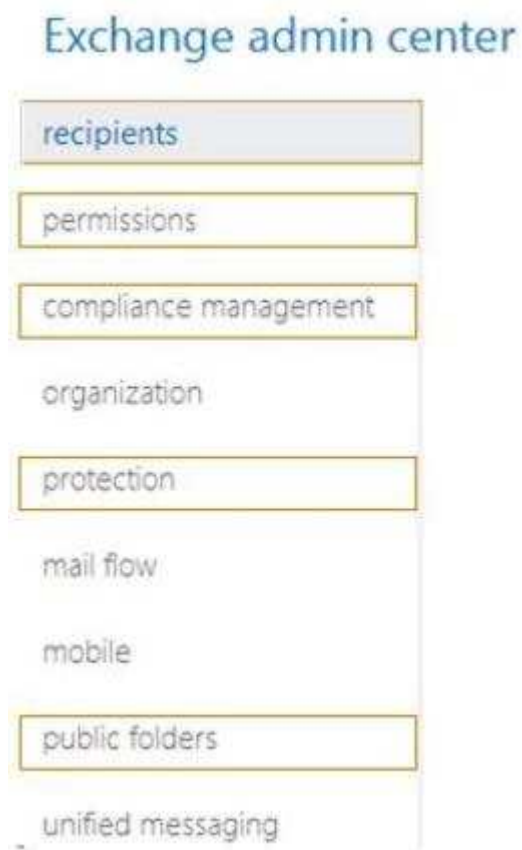


<http://www.gratisexam.com/>

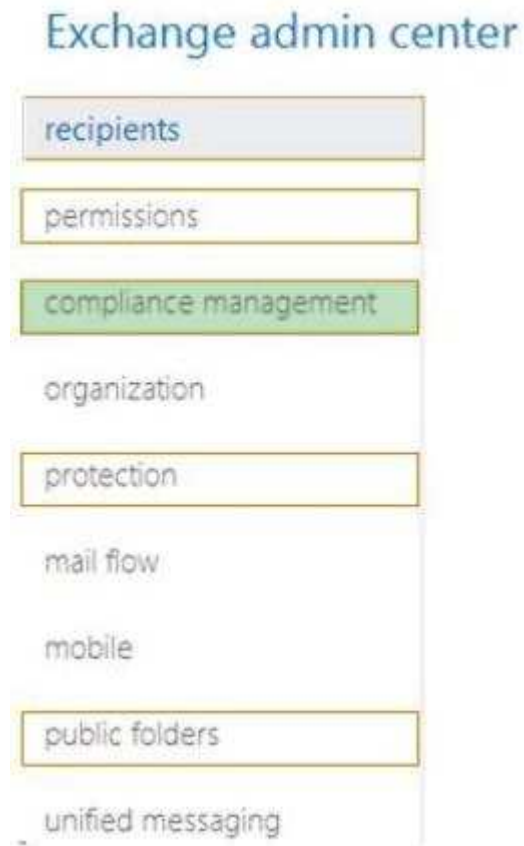
You need to ensure that users continue to have access to Exchange Online mailbox data after an In-Place Hold is applied

On the Exchange admin center page, which option should you select?
(To answer, select the appropriate option in the answer area)

Hot Area:



Correct Answer:



Section: [none]

Explanation

Explanation/Reference:

<http://technet.microsoft.com/en-us/library/dd298021%28v=exchg.150%29.aspx>

QUESTION 8

Question 8

You use Visual Studio to design a SharePoint solution for a company that sells wine to customers around the world.

The solution must return the total number of cases sold per country. The solution also must allow employees to sort cases of wine that are returned. Employees must sort cases by country, date, and reason for the return.

You need to configure the solution to meet the requirements. Which steps should you take? (Each correct answer presents part of the solution. Choose all that apply)

- A. Add a Refinement Web Part to the page
- B. Configure the query for the Content Search Web Part.
- C. Add country as a property filter to the Search Results Web Part.
- D. Add a Calendar Web Part to the page.

Correct Answer: BCD

Section: [none]

Explanation

Explanation/Reference:

Use property filters to query the content of managed properties that are set to queryable in the search schema. Select managed properties from the Property filter lists. Click Add property filter to add the filter to the query.

<http://office.microsoft.com/en-001/support/sharepoint-help/sharepointsearch/about-configuring-the-refinement-web-part-HA102848699.aspx>

<http://office.microsoft.com/sq-al/office365-sharepoint-online-enterprise-help/change-settings-for-the-search-results-web-part-HA103998057.aspx>

<http://msdn.microsoft.com/en-us/library/dd451196.aspx>

Testing: Answer ABC

QUESTION 9

Question 9

You develop a SharePoint app that uses the client-side object model (CSOM) to retrieve items from the search index.

You need to implement the client-side query code.

Which four code segments should you use in sequence?

(To answer, move the appropriate actions from the list of actions to the answer area and arrange them in the correct order)

Select and Place:

	Answer Area
<pre>searchExecutor.Retrieve()</pre>	
<pre>using Microsoft.SharePoint.Client.Search.Applications;</pre>	
<pre>searchExecutor.ExecuteQuery(query)</pre>	
<pre>SearchExecutor searchExecutor = new SearchExecutor(clientContext); KeywordQuery query = new KeywordQuery(clientContext);</pre>	
<pre>using Microsoft.SharePoint.Client.Search.Query;</pre>	
<pre>var clientContext = TokenHelper.GetClientContextWithContextToken(hostWeb, contextToken, Request.Url.Authority)</pre>	
<pre>Query query = new Query(clientContext);</pre>	

Correct Answer:

	Answer Area
<code>searchExecutor.Retrieve()</code>	<code>using Microsoft.SharePoint.Client.Search.Query;</code>
<code>using Microsoft.SharePoint.Client.Search.Applications;</code>	<code>var clientContext = TokenHelper.GetClientContextWithContextToken (hostWeb, contextToken, Request.Url.Authority)</code>
	<code>SearchExecutor searchExecutor = new SearchExecutor(clientContext); KeywordQuery query = new KeywordQuery (clientContext);</code>
	<code>searchExecutor.ExecuteQuery(query)</code>
<code>Query query = new Query(clientContext);</code>	

Section: [none]

Explanation

Explanation/Reference:

▪ Step 1

First we need to add the necessary references such as.

```
using MicrosoftSharePoint.Client;
using MicrosoftSharePoint.ClientSearch;
using MicrosoftSharePoint.ClientSearch.Query;
```

▪ Step 2

Start by creating a ClientContext object and pass in the URL to a site. Put this in a using block.

```
using (ClientContext clientContext = new ClientContext("http://servername"))
```

We then need to create a KeywordQuery class to describe the query This class is similar to the server side KeywordQuery class but there are some differences. We pass the ClientContext into the constructor.

```
var keywordQuery = new KeywordQuery(context);
```

▪ Step 3

Unlike the server object model, with the Client OM we have to use another class, SearchExecutor, to send the queries to the search engine We pass a ClientContext to it as well

```
var searchExecutor = new SearchExecutor(context);
```

▪ Step4

However, the query doesn't actually execute until you call ExecuteQuery() on the ClientContext object If you have done a lot of Client OM work before, you might think you need to call Load() first but it is not required

```
var results = searchExecutor.executeQuery(keywordQuery);
```

Not Retrieve: ClientObject.**Retrieve** method retrieves all scalar properties associated with the object. This

member is reserved for internal use and is not intended to be used directly from your code.

<http://code.msdn.microsoft.com/office/SharePoint-2013-Querying-a629b53b>
<http://msdn.microsoft.com/en-us/library/microsoft.sharepoint.client.search.query.searchexecutor.aspx>

TestKing: Step4=ExecuteQuery

QUESTION 10

Question 10

You develop a SharePoint app for a toy company that uses the Representational State Transfer (REST) API for search. The site collections in the app have been crawled recently and use the default search schema.

The app includes the following code segment (Line numbers are included for reference only)

```
01 function runQuery() {  
02     var queryTerms = $("#searchBox").text();  
03  
04     spPageContextInfo.webAbsoluteUrl + "/_api/search/query?querytext='" + queryTerms +  
05     "'&sourceid='" + resultSourceId + "'";  
06 }
```

You create the following result sources.

Result source name	ID	Scope level	QueryTransform
Web PDF	{82951A0C-6385-4E29-8D7F-4AD92FE9F536}	Web	{?{searchTerms}} fileextension:PDF
Farm PDF	{32FBAF57-367E-411D-B93F-F28E1EFF58B2}	Farm	{?{searchTerms}} filetype:pdf
Site PDF	{0F41A999-52BA-41ED-AAAD-9D414A0FCBB4}	Site Collection	{?{searchTerms}} "PDF"
Web Brands	{319BCF11-ACBE-4B77-A0E4-7225E31810EB}	Web	{?{searchTerms}} near ("deluxe brands")
Site PDF Extension	{A0EBE2E7-C7CA-4516-8208-F558827C75D6}	Site Collection	{?{searchTerms}} fileextension:PDF
Site PDF FileType	{4C50FE18-B254-47A1-ABAD-0B6C4577D914}	Site Collection	{?{searchTerms}} filetype:pdf

- A. var resultSourceId = "Site PDF";
- B. var resultSourceId = "4C50FE18-8254-47A1-ABAD-0B6C4577D914";
- C. var resultSourceId = "0F41-A999-523A-41ED-AAAD-9D414A0FC384";
- D. var resultSourceId = "82951A0C-6385-4E29-8D7F-4AB92FE9F536";

Correct Answer: D

Section: [none]

Explanation

Explanation/Reference:

Sample GET request

http://server/_api/search/query?querytext='sharepoint'&sourceid='8413cd39-2156-4e00-b54d-11efd9abdb89'

<http://msdn.microsoft.com/en-us/library/office/jj163876.aspx>
<http://blogs.technet.com/b/tothesharepoint/archive/2012/10/09/build-a-specialized-search-experience-in-minutes-with-sharepoint-2013.aspx>
<http://sportstoday.us/technology/sharepoint-2013---configuring-enterprise-search-%28part-3%29---result-source.aspx>

QUESTION 11

Question 11

A SharePoint app displays the following search results:

Model	Color	Manufacture
A	Red	Year 2010
A	Black	Year 2010
A	Red	Year 2011
B	Blue	Year 2010
B	Red	Year 2012
C	White	Year 2011

You have the following requirements

- Group results by model.
- Display only two rows per model.
- Show a unique color for each model.

You need to define a query to meet the requirements. How should you complete the relevant code?
 (To answer, select the appropriate code segment from each drop-down list in the answer area)

Hot Area:

```
var query = new KeywordQuery(context)
{
    QueryText = "Manufacture:Year",
    [ ] = "Model:[ ] Color:[ ]",
    QueryInfo
    ReorderingRules
    CollapseSpecification
}
```

1
2
3

[space]
,
;

0
1
2

Correct Answer:

```
var query = new KeywordQuery(context)
{
    QueryText = "Manufacture:Year",
    [ ] = "Model:[ ] Color:[ ]",
    QueryInfo
    ReorderingRules
    CollapseSpecification
}
```

1
2
3

[space]
,
;

0
1
2

Section: [none]

Explanation

Explanation/Reference:

KeywordQuery.CollapseSpecification property gets or sets criteria to use for collapsing search results.

<http://msdn.microsoft.com/en-us/library/microsoft.sharepoint.client.search.query.keywordquery.aspx>

QUESTION 12**Question 12**

A legal company uses SharePoint for document and records management. You search all documents by using extractors and managed properties. FAST Query Language (FQL) is enabled for the result sources, and the content of the document is indexed as full text. All documents are named by using the following pattern "AAA-Axxxx-AA".

You must find documents that were created in May 2012 and contain the ordered keywords "liable", "advocate", and "adjudication". Results that are returned must include only document names that begin with "HCT-Q" and end only with "AB".

You need to create the FQL query that returns the required results.

Which FQL statements should you use? (Each correct answer presents part of the solution. Choose all that apply)

- A. write>=05/01/2012 and write<=05/31/2012
- B. string("liable advocate adjudication", mode="onear")
- C. title:HCT-Q*
- D. title:HCT-Q????-AB
- E. NEAR(liable, advocate, adjudication)
- F. write:range(2012-05-01, 2012-05-31)

Correct Answer: BDF

Section: [none]

Explanation**Explanation/Reference:**

B (not E)

The ordered variant of NEAR, and requires an ordered match of the terms. The ONEAR operator can be used to restrict the result set to items that have N terms within a certain distance of.

Returns only items that don't match the operand. The operand may be any valid FQL expression or another.

NEAR Restricts the result set to items that have N terms within a certain distance of one another.

ONEAR The ordered variant of NEAR, and requires an ordered match of the terms. The ONEAR operator can be used to restrict the result set to items that have N terms within a certain distance of one another.

D (not C)

All documents are named by using the following pattern "AAA-Axxxx-AA".

Results that are returned must include only document names that begin with "HCT-Q" and end only with "AB".

F (not A)

Range Enables range matching expressions. The RANGE operator is used for numeric and date/time managed properties.

FQL provides the datetime data type for date and time.

The following ISO 8601-compatible datetime formats are supported in queries:

YYYY-MM-DD

YYYY-MM-DDThhmmss

YYYY-MM-DDThhmmssZ

YYYY-MM-DDThhmmssfrZ

// Return all results between and including 2013-07-17T12:35:57.0000000Z and 2013-07-

17T13:35:57.0000000Z

/_api/search/query?querytext='*'&refinementfilters='write:range(2013-07-17T12:35:57.0000000Z,2013-07-17T13:35:57.0000000Z, from="ge",to="le")'

<http://msdn.microsoft.com/en-us/library/office/ff394606.aspx>

<http://techmikael.blogspot.de/2013/07/limiting-search-results-by-exact-time.html>

QUESTION 13

Question 13

You have a SharePoint farm. You create a web service that connects to an extension point in the Search service. The web service processes string content and returns the string in all capitalized letters.

The web service includes the properties in the following table.

Managed properties	Crawled properties
Title	ows_q_TEXT_Title
TitleInCaps	ows_q_TEXT_TitleInCaps

You start the SharePoint Management Shell You create the following Windows PowerShell cmdlet (Line numbers are included for reference only)

```
01 $searchApp = Get-SPEnterpriseSearchServiceApplication
02 $config = New-SPEnterpriseSearchContentEnrichmentConfiguration
03 $config.Endpoint = http://localhost:8080/SearchProcessor.svc
04
05 Set-SPEnterpriseSearchContentEnrichmentConfiguration -
   SearchApplication $searchApp -ContentEnrichmentConfiguration $config
```

You need to complete the Windows PowerShell cmdlet to register the Content Enrichment service.

Which code segment should you insert at line 04?

- A. `$config.InputProperties = "ows_q_TEXT_Title"`
`$config.OutputProperties = "ows_q_TEXT_TitleInCaps"`
- B. `$config.OutputProperties = "Title"`
`$config.InputProperties = "TitleInCaps"`
- C. `$config.InputProperties = "Title"`
`$config.OutputProperties = "TitleInCaps"`
- D. `$config.ManagedProperties = "Title", "TitleInCaps"`

Correct Answer: C

Section: [none]

Explanation

Explanation/Reference:

InputProperties gets or sets the list of properties that the external service expects.

OutputProperties gets or sets the list of properties that the external service outputs. These will overwrite the original value of that property as it is propagated through the Content Processing Component.

```
$ssa = Get-SPEnterpriseSearchServiceApplication
$config = New-SPEnterpriseSearchContentEnrichmentConfiguration
$config.Endpoint = http://Site_URL/ContentEnrichmentService.svc
$config.InputProperties = "Author", "Filename"
$config.OutputProperties = "Author"
$config.SendRawData = $True
$config.MaxRawDataSize = 8192
Set-SPEnterpriseSearchContentEnrichmentConfiguration -SearchApplication $ssa -
ContentEnrichmentConfiguration $config
```

<http://msdn.microsoft.com/en-us/library/jj163982.aspx>
<http://msdn.microsoft.com/en-us/library/microsoft.office.server.search.administration.contentprocessing.contentenrichmentconfiguration.aspx>
<http://technet.microsoft.com/en-us/library/jj219502.aspx>
<http://msdn.microsoft.com/en-us/library/jj163968.aspx>
<http://technet.microsoft.com/en-us/library/jj219659.aspx>

TestKing: Answer D

QUESTION 14

Question 14

You use the SharePoint 2013 Management Shell to access a SharePoint farm. A user reports an error in one of the apps that you have installed. The error message contains the correlation token ID of b49f64b3-4722-4336-9a5c-56c326b344d4.

You need to save a report of the complete error trace for all errors that were reported in the previous 30 minutes.

How should you complete the Windows PowerShell cmdlet? (To answer, select the appropriate option from each drop-down list in the answer area)

Hot Area:

get-spllogevent

-starttime |

(get-date).addminutes(30)
(get-date).minutes.add(-30)
(get-date).addminutes(-30)
(current-date).addminutes(

where-object {

<input type="text" value=""/>	<input type="text" value=""/>
\$_tokenid	==
\$.correlation	-eq
\$_correlation	-equals
\$.correlationid	-contains

"b49f64b3-4722-4336-9a5c-56c326b344d4" } |

> c:\errors.txt

Correct Answer:

get-splogevent

-starttime
(get-date).addminutes(30)
(get-date).minutes.add(-30)
(get-date).addminutes(-30)
(current-date).addminutes(

where-object {

<input type="text" value=""/>	<input type="text" value=""/>
\$.tokenId	==
\$.correlation	-eq
\$.correlation	-equals
\$.correlationid	-contains

"b49f64b3-4722-4336-9a5c-56c326b344d4" }
> c:\errors.txt

Section: [none]

Explanation

Explanation/Reference:

QUESTION 15

Question 15

You develop a SharePoint app that reads data from an external source by using Business Connectivity Services (BCS). The following markup defines the subscription (Line numbers are included for reference only)

```
01 <Subscription LobSystemInstanceName="ContosoLOBInstance"  
02 EntityNamespace="Contoso" EntityName="Employee"  
03 Name="ContosoEmployeeSubscription" View="GetEmployeeById"  
04 IsCached="true" RefreshIntervalInMinutes="360"  
05 xmlns="http://schemas.microsoft.com/office/2006/03/BusinessDataCatalog">  
06  
07 <Queries>  
08 <Query Name="ContosoEmployeeQuery"  
09 MethodInstanceName="GetEmployees"  
10 DisplayName="Employee Read List"  
11 RefreshIntervalInMinutes="180" IsCached="true" Enabled="true">  
12  
13 </Query>  
14 </Queries>  
15 </Subscription>
```

Employee identification (ID) numbers that are less than 100 must be ignored. You need to configure the subscription.

What should you do?

A. Insert the following markup at line 12:


```
<FilterValues>
  <FilterValue FilterDescriptorName="MinEmployeeId"
    FilterIndex="0" Type="100"/>
</FilterValues>
```

B. Insert the following markup at line 06:

```
<Identities>
  <Identity>where "minValue" >100</Identity>
</Identities>
```

C. Insert the following markup at line 12:

```
<FilterValues>
  <FilterValue FilterDescriptorName="MinEmployeeId"
    FilterIndex="0" Type="System.Int32">100</FilterValue>
</FilterValues>
```

D. Insert the following markup at line 12:

```
<FilterValues>
  <FilterValue FilterDescriptorName="MinEmployeeId"
    FilterIndex="100" Type="System.Int32"/>
</FilterValues>
```

Correct Answer: C

Section: [none]

Explanation

Explanation/Reference:

FilterValue element in FilterValues (Subscription Schema) specifies a filter value for a query or association.

```
<FilterValue FilterDescriptorName = "String" Type = "String" FilterIndex =
  "Integer"> </FilterValue>
```

The FilterValue element can contain a mix of character data and child elements.

The following sections describe attributes, child elements, and parent elements.

- **FilterDescriptorName** (Required) The name of the filter descriptor in the model.
- **Type** (Required) The data type of the filter value.
- **FilterIndex** (Required) Must always be set to **zero**

<http://msdn.microsoft.com/en-us/library/office/ee557321.aspx>

TestKing: Answer D

QUESTION 16

Question 16

You deploy a solution to a SharePoint server.

You need to implement a method to programmatically access the health score of the SharePoint Server.

Which three code segments should you use in sequence?

(To answer, move the appropriate segments from the list of segments to the answer area and arrange them in the correct order.)

Select and Place:

	Answer Area
<pre> SharePointHealthScore = Int32.Parse (response.Headers["X-SharePointHealthScore"]) </pre>	
<pre> request.Method = "GET"; request.BeginGetResponse((asyncResult) => { HttpWebResponse response = request.EndGetResponse(asyncResult) as HttpWebResponse; </pre>	
<pre> HttpWebRequest request = WebRequest.Create(new Uri ("uri", UriKind.Absolute) as HttpWebRequest; </pre>	
<pre> SharePointHealthScore = Int32.Parse (response.Headers["SPHealthScore"]) </pre>	

Correct Answer:

	Answer Area
	<pre> SharePointHealthScore = Int32.Parse (response.Headers["X-SharePointHeal </pre>
	<pre> HttpWebRequest request = WebRequest.Create(new Uri ("uri", UriKind.Absolute) as HttpWeb </pre>
	<pre> request.Method = "GET"; request.BeginGetResponse((asyncResu HttpWebResponse response = request.EndGetResponse(asyncResult HttpWebResponse; </pre>
<pre> SharePointHealthScore = Int32.Parse (response.Headers["SPHealthScore"]) </pre>	

Section: [none]

Explanation

Explanation/Reference:

The Health Score is as an integer between 0 and 10, where 0 represents a really good health of the server, or rather Web Application, and 10 is where you do not want to be. SharePoint continuously calculates the Health Score and for each and every request the Health Score is sent as an HTTP Response Header, called X-SharePointHealthScore.

<http://www.wictorwilen.se/sharepoint-2013-sharepoint-health-score-and-throttling-deep-dive>

QUESTION 17

Question 17

You develop a SharePoint site by using the Team Site template. Users share large images by using the team site.

You need to configure the SharePoint site so that images render at a maximum size of 400px wide and 200px high.

Which three actions should you perform in sequence? (To answer, move the appropriate actions from the list of actions to the answer)

Select and Place:

	Answer Area
Create an image rendition that is 400px wide and 200px high.	
Enable the binary large object (BLOB) cache in the web.config file for the site. Enable publishing features for the site collection.	
Disable the binary large object (BLOB) cache in the web.config file of the site. Enable publishing features for the site collection.	
Create a placeholder container that is 400px wide and 200px high in the master template.	
Choose the configured rendition each time a new image needs to be rendered.	

Correct Answer:

	Answer Area
	Enable the binary large object (BLOB) cache in the web.config file for the site. Enable publishing features for the site collection.
	Create an image rendition that is 400px wide and 200px high.
Disable the binary large object (BLOB) cache in the web.config file of the site. Enable publishing features for the site collection.	Choose the configured rendition each time an image needs to be rendered.
Create a placeholder container that is 400px wide and 200px high in the master template.	

Section: [none]

Explanation

Explanation/Reference:

Step 1:

To minimize the performance impact caused by dynamically rendering images, the Image Renditions capability depends on the BLOB cache which caches generated renditions. For this mechanism to work properly, you have to enable the BLOB cache for your Web Application in web.config.

- Open web.config file for the web application
- Locate BLOBCache line and set enabled= "true"
- Set the folder path to another folder or keep the default C:\BlobCache\15 folder)

Step 2:

EDIT LINKS

Edit Image Rendition

ID5

Name *My Custom Rendition

Width550

Height186

Save

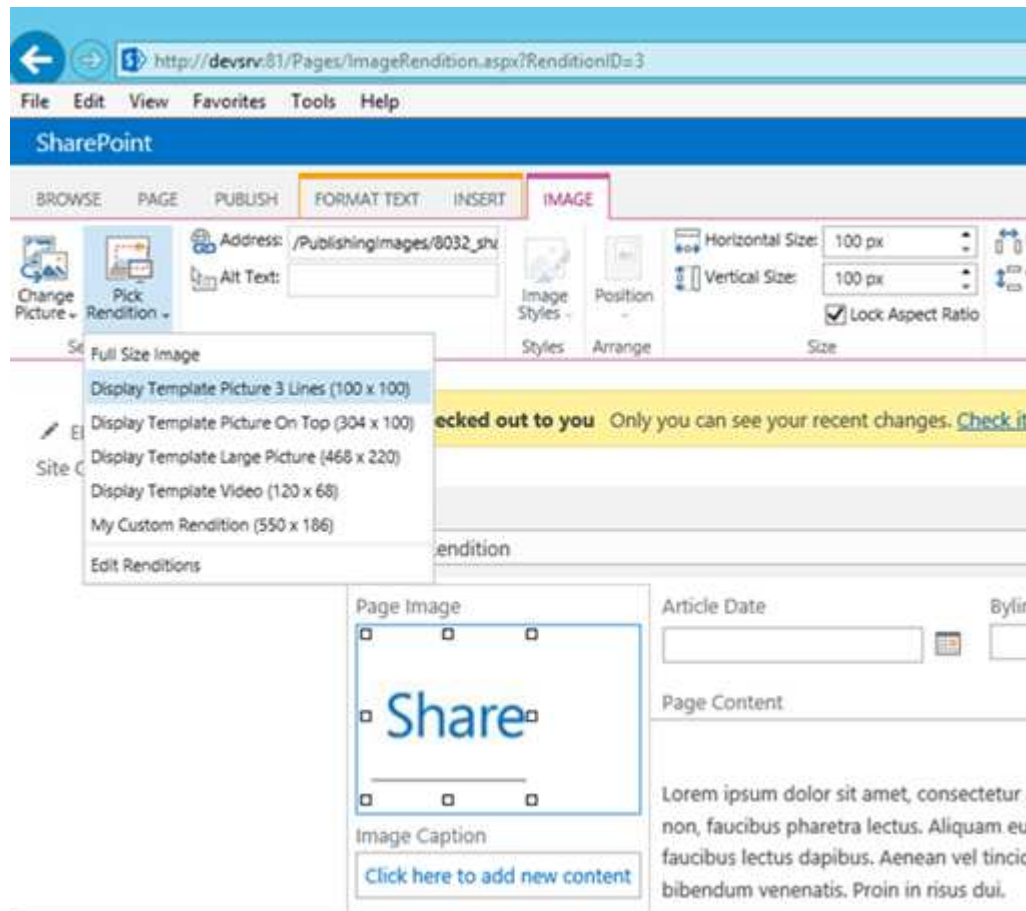
Cancel

[dib|tif|tiff|themedbmp|4v|mov|mp3|mp4|mpeg|mpg|

ryByParam=""

Step 3:

- Edit the page and add an image to on the left.
- Select the image on the left.
- On the top bar, click on Image, Click on Pick Rendition.
- Choose the required setting to show the image:



<http://blog.mastykarz.nl/image-renditions-sharepoint-2013/>

QUESTION 18**Question 18**

You configure a SharePoint app to collect diagnostic information. The app must meet the following requirements:

- Record messages about all unrecoverable events that limit the functionality of the app, but do not stop the app
- Record all events that include unexpected exceptions
- Minimize the effects of logging on app performance

You need to configure the application to meet the requirements. Which trace log level should you use?

- A. High
- B. Medium
- C. Unexpected
- D. Monitorable
- E. Verbose

Correct Answer: D

Section: [none]

Explanation

Explanation/Reference:

Trace Level Guidelines:

Monitorable (15) traces that indicate a problem, but do not need immediate investigation. The intent is to collect data and analyze it over time, looking for problem trends.

<http://msdn.microsoft.com/en-us/library/ff604025%28v=office.14%29.aspx>

QUESTION 19

Question 19

You develop a Microsoft Office app to access external data by using Business Connectivity Services (BCS).

The app must access data from a Windows Communication Foundation (WCF) connector by using an external content type.

Which four actions should you perform in a sequence?

(To answer, move the appropriate actions from the list of actions to the answer area and arrange them in the correct order)

Select and Place:

	Answer Area
Use the BDC model to query the client runtime for connection details.	
Use the BDC model to pass the request for the required data to the WCF connector.	
Use the app to send a request for data to the Business Data Catalog (BDC) model.	
Provide credentials to the client runtime and store the credentials.	
Use the client runtime to pass the request for data to the WCF connector.	
From the Office app, generate a request for data and pass it to the BDC client runtime.	
Use the BDC Client Runtime to query the BDC model for connection details and the credentials to use.	

Correct Answer:

	Answer Area
Use the BDC model to query the client runtime for connection details.	From the Office app, generate a request for and pass it to the BDC client runtime.
	Use the BDC Client Runtime to query the BDC model for connection details and the credentials to use.
Use the app to send a request for data to the Business Data Catalog (BDC) model.	Provide credentials to the client runtime and the credentials.
	Use the BDC model to pass the request for the required data to the WCF connector.
Use the client runtime to pass the request for data to the WCF connector.	

Section: [none]

Explanation

Explanation/Reference:

A BDC model is the heart of Business Data Connectivity (BDC) service. The data structures, such as Entity (external content type) and Method, that abstract out complex details about an external system are collectively named MetadataObjects and compose the BDC model. The BDC model for an external system is essentially an XML file.

QUESTION 20

Question 20

Contoso, Ltd. is integrating an Enterprise Resource Planning (ERP) system with SharePoint by using Business Connectivity Services (BCS). The ERP system is a Windows Communication Foundation (WCF) service that is hosted in Internet Information Services (IIS). The WCF service is named people.svc and is located at <http://contoso.com:8080>. The metadata for the service is found at <http://contoso.com:8080/mex>.

You need to create a data connection for the ERP system

In the WCF Connection dialog box, how should you configure the connection to the WCF service? (To answer, select the appropriate option from each drop-down list in the answer area)

Hot Area:

WCF Connection

Connection Properties

Service Metadata URL:

http://localhost:808/mex
http://contoso.com:808/mex
http://contoso.com:8080/people.svc?wsdl
http://contoso.com:8080/people.svc/\$meta

Metadata Connection Mode:

REST
WSDL
Metadata Exchange

Service Endpoint URL:

http://contoso.com:8080/
http://localhost:8080/people.svc
http://contoso.com:8080/people.svc
http://contoso.com:8080/people.svc?wsdl

Name (optional):

☐ **Use Proxy Server**

Proxy Server:

☐ **Define custom proxy namespace for programmatic access.**

Proxy Namespace: BCSServiceProxy

WCF Service Authentication Settings

☐ Connect with User's Identity
☒ Connect with Impersonated Windows Identity
☐ Connect with Impersonated Custom Identity

Secure Store Application ID: PeopleSoftConnector

Correct Answer:

WCF Connection

Connection Properties

Service Metadata URL:

http://localhost:808/mex
http://contoso.com:808/mex
http://contoso.com:8080/people.svc?wsdl
http://contoso.com:8080/people.svc/\$meta

Metadata Connection Mode:

REST
WSDL
Metadata Exchange

Service Endpoint URL:

http://contoso.com:8080/
http://localhost:8080/people.svc
http://contoso.com:8080/people.svc
http://contoso.com:8080/people.svc?wsdl

Name (optional):

☐ Use Proxy Server

Proxy Server:

☐ Define custom proxy namespace for programmatic access.

Proxy Namespace: BCSServiceProxy

WCF Service Authentication Settings

☐ Connect with User's Identity
☒ Connect with Impersonated Windows Identity
☐ Connect with Impersonated Custom Identity

Secure Store Application ID: PeopleSoftConnector

Section: [none]

Explanation

Explanation/Reference:

<http://msdn.microsoft.com/en-us/library/ff953200%28v=office.14%29.aspx>

QUESTION 21

Question 21

You develop a provider-hosted SharePoint app that retrieves and displays weather information from an external site. The site contains lists of temperatures for different cities.

You need to create a Representational State Transfer (REST) endpoint URL in the app to retrieve hourly temperatures for a specific city from the site.

How should you complete the relevant code?

(To answer, drag the appropriate term to the correct location or locations in the answer area. Each term may be used once, more than once, or not at all. You may need to drag the split bar between panes or scroll to view content)

Select and Place:

Answer Area

```
string url = "http://www.contoso.com/"  
/_api/web/  
/getbytitle('\"+ cityName + '\")/  
var listRequest =  
(HttpWebRequest)HttpWebRequest.Create(url);  
listRequest.Method = "
```

Correct Answer:

Answer Area

```
string url = "http://www.contoso.com/weather"  
/_api/web/lists  
/getbytitle('\"+ cityName + '\")/items  
var listRequest =  
(HttpWebRequest)HttpWebRequest.Create(url);  
listRequest.Method = "GET"
```

Section: [none]

Explanation

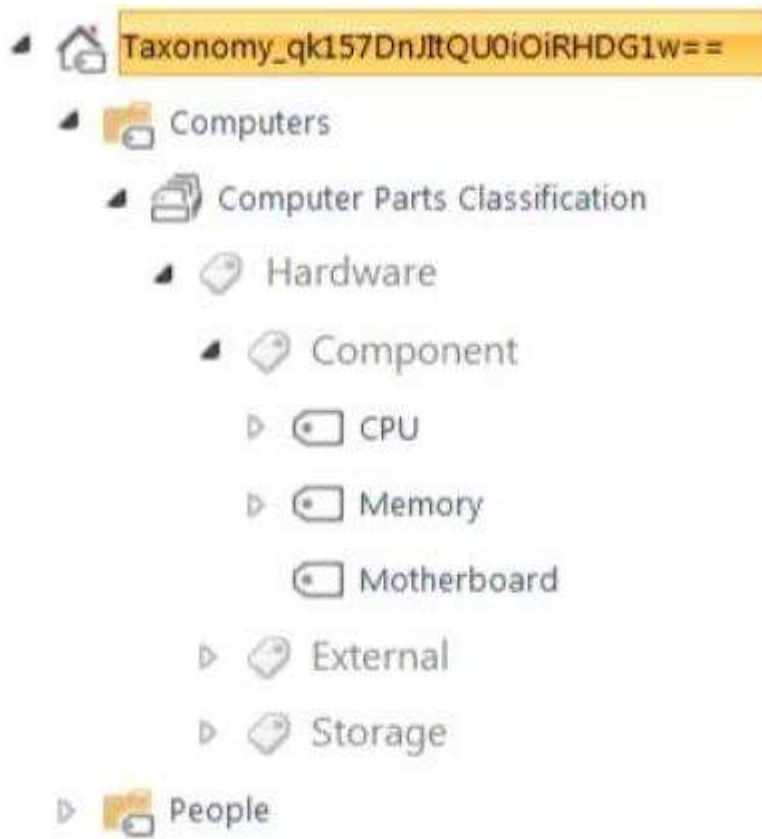
Explanation/Reference:

QUESTION 22

Question 22

You work for a company named Contoso, Ltd. that sells computer parts. You tag inventory lists by using a term

set named Computer Parts Classification. The term set is structured as follows.



You must create a console application that accesses the SharePoint site and you must add a ClientContext object named ctx. You need to create a term named i7-2600K that is a child of the CPU node and add a shared property to the i7-2600K term.

How should you complete the relevant code? (To answer, select the appropriate code segment from each drop-down list in the answer area)

Hot Area:

```
var d = ;
```

c.GetAllTerms()
c.Name
c.Terms

```
ctx.Load(d, s => s.Include(t => t.Name));  
ctx.ExecuteQuery();  
var e = d.SingleOrDefault(x => x.Name == "CPU");  
var f = e.CreateTerm("i7-2600K", 1033,
```

```
 );  
5  
new Guid()  
Guid.NewGuid()  
"HDNCET-HFNTYE-ANDGE-PITNI-BCGHE"
```

```
f.IsAvailableForTagging = true;  
f.SetCustomProperty("Manufacturer", "Contoso");
```


```
 ;  
ctx.Load(f)  
ctx.LoadQuery(f)  
ctx.ExecuteQuery()  
ctx.GetFormDigestDirect()
```

Correct Answer:


```
var d = ;
```


c.GetAllTerms()
c.Name
c.Terms

```
ctx.Load(d, s => s.Include(t => t.Name));
ctx.ExecuteQuery();
var e = d.SingleOrDefault(x => x.Name == "CPU");
var f = e.CreateTerm("17-2600K", 1033,
```

```
 );
```

5
new Guid()
Guid.NewGuid()
"HDNCET-HFNTYE-ANDGE-PITNI-BCGHE"

```
f.IsAvailableForTagging = true;
f.SetCustomProperty("Manufacturer", "Contoso");
```

```
;
```

ctx.Load(f)
ctx.LoadQuery(f)
ctx.ExecuteQuery()
ctx.GetFormDigestDirect()

Section: [none]

Explanation

Explanation/Reference:

TermSet.**GetAllTerms** method returns a collection containing a flat list of **all** Term objects in the TermSet object.

TermSetItem.**Terms** property gets a collection of the **child** Term objects of this TaxonomyItem.

<http://msdn.microsoft.com/library/microsoft.sharepoint.client.taxonomy.termset.getallterms.aspx>
<http://msdn.microsoft.com/en-us/library/system.guid.newguid%28v=vs.110%29.aspx>

QUESTION 23

Question 23

You develop a SharePoint app that displays information about automobile parts.

You need to create a user profile property to classify automobile parts into categories.

Which property name should you specify?

- A. 1part-Classification
- B. part.classification
- C. part_classification

D. Part Classification

Correct Answer: B

Section: [none]

Explanation

Explanation/Reference:

QUESTION 24

Question 24

You develop a .NET application named SPUserProfiles for a company called Contoso, Ltd.

SPUserProfiles communicates with a SharePoint app by using SharePoint Web Services. The SharePoint web service reference name is ProfileService. SPUserProfiles includes the following code segment (Line numbers are included for reference only)

```
01 using SPUserProfiles.ProfileService;
02 namespace SPUserProfiles
03 {
04     class Program
05     {
06         public static UserProfileService svc = new UserProfileService();
07         static void Main(string[] args)
08         {
09             UpdatePhoneNumber();
10         }
11         ...
12     }
13 }
```

You need to implement the UpdatePhoneNumber method.

How should you complete the relevant code?

(To answer, drag the appropriate code segments to the correct target locations in the answer area. Each code segment may be used once, more than once, or not at all. You may need to drag the split bar between panes or scroll to view content.)

Select and Place:

	Answer Area
<div><div>new PropertyData[1];</div><div>new PropertyData();</div><div>new ValueData();</div><div>new ValueData[1];</div><div>true;</div><div>false;</div></div>	<pre>private static void UpdatePhoneNumber() { PropertyData[] data = <input type="text"/> data[0] = <input type="text"/> data[0].Name = "HomePhone"; data[0].Values = <input type="text"/> data[0].Values[0] = <input type="text"/> data[0].Values[0].Value = "8321121101"; data[0].IsValueChanged = <input type="text"/> svc.Credentials = System.Net.CredentialCache.DefaultCr svc.ModifyUserPropertyByAccountName("contoso\\Jhart", } }</pre>

Correct Answer:

	Answer Area
<div><div>new PropertyData[1];</div><div>new PropertyData();</div><div>new ValueData();</div><div>new ValueData[1];</div><div>true;</div><div>false;</div></div>	<pre>private static void UpdatePhoneNumber() { PropertyData[] data = new PropertyData[1]; data[0] = new PropertyData(); data[0].Name = "HomePhone"; data[0].Values = new ValueData[1]; data[0].Values[0] = new ValueData(); data[0].Values[0].Value = "8321121101"; data[0].IsValueChanged = true; svc.Credentials = System.Net.CredentialCache.DefaultCr svc.ModifyUserPropertyByAccountName("contoso\\Jhart", } }</pre>

Section: [none]

Explanation

Explanation/Reference:

PropertyData class returns name/value pairs when the GetUserProfileByName method and the GetUserProfileByGuid method of the UserProfileService class are called.

PropertyData.Values property gets or sets the property values of the user profile property.

```
public ValueData[] Values { get; set; }
```

<http://msdn.microsoft.com/en-us/library/aa981623%28v=office.15%29.aspx>

<http://msdn.microsoft.com/en-us/library/websvcuserprofilespropertydata.values%28v=office.15%29.aspx>

QUESTION 25

Question 25

You develop a SharePoint app that reads social data from your company's SharePoint site.

You need to access the SocialFeedManager object.

Which object or URL should you use?

- A. `http://<siteUri>/_api/social.feed`
- B. `SocialFeedManager(ClientRuntimeContext, ObjectPath);`
- C. `http://<siteUri>/social.feed`
- D. `SPSocialFeedManager(UserProfile);`

Correct Answer: A

Section: [none]

Explanation

Explanation/Reference:

Access point:

`<siteUri>/_api/social.feed`

`SocialFeedManager(ClientRuntimeContext, ObjectPath)` - This member is reserved for **internal use** and is not intended to be used directly from your code.

<http://msdn.microsoft.com/en-us/library/office/jj163237.aspx>

<http://msdn.microsoft.com/en-us/library/microsoft.sharepoint.client.social.socialfeedmanager>

TestKing: Answer B

QUESTION 26

Question 26

You develop a feature in a SharePoint solution by using Visual Studio 2012. You insert several breakpoints in the feature event receiver to debug performance issues.

You need to ensure that the code stops running when the solution reaches a breakpoint

Which three actions should you perform in sequence? (To answer, move the appropriate actions from the list of actions to the answer area and arrange them in the correct order)

Select and Place:

	Answer Area
Set the value of the project's Active Deployment Configuration property to Default .	
Add a registry key named EnableDiagnostics to the HKEY_CURRENT_USER\Software\Microsoft\VisualStudio\11.0\SharePointTools node of the registry, and then set the registry key value to 1.	
Start to debug the SharePoint solution in Visual Studio.	
Set the value of the project's Active Deployment Configuration property to No Activation .	
Manually activate the feature in SharePoint by using Site Settings.	

Correct Answer:

	Answer Area
Set the value of the project's Active Deployment Configuration property to Default .	Set the value of the project's Active Deployment Configuration property to No Activation .
Add a registry key named EnableDiagnostics to the HKEY_CURRENT_USER\Software\Microsoft\VisualStudio\11.0\SharePointTools node of the registry, and then set the registry key value to 1.	Start to debug the SharePoint solution in Visual Studio.
	Manually activate the feature in SharePoint by using Site Settings.

Section: [none]

Explanation

Explanation/Reference:

Debugging Feature Event Receivers:

By default, when you run a Visual Studio SharePoint application, its features are automatically activated for you in the SharePoint server. However, this causes problems when you debug feature event receivers, because when a feature is activated by Visual Studio, it runs in a different process than the debugger. This means that some debugging functionality, such as breakpoints, will not work correctly.

To disable the automatic activation of the feature in SharePoint and allow proper debugging of Feature Event Receivers, set the value of the project's Active Deployment Configuration property to No Activation before debugging. Then, after you start to debug your SharePoint application in Visual Studio, manually activate the feature in SharePoint. To activate the feature, open the Site Actions menu in SharePoint, choose Site Settings, choose the Manage Site Features link, and then choose the Activate button next to the feature, to continue debugging as normal.

QUESTION 27

Question 27

You have a custom Web Part that retrieves data across multiple task lists. Pages that contain the Web Part load slowly.

You need to ensure that pages load as quickly as possible.

Which methods should you use? (Each correct answer presents a complete solution. Choose all that apply)

- A. `CrosslistQueryCache.GetSiteData(SPContext.Current.Site, siteUrl)`
- B. `CrosslistQueryCache.GetSiteData(SPContext.Current.Site)`
- C. `Cache.Get(siteUrl)`
- D. `SPList.GetItems(spQuery)`

Correct Answer: BC

Section: [none]

Explanation

Explanation/Reference:

A.

`CrossListQueryCache.GetSiteData` method (SPSite) gets the cache data that is based on the `CrossListQueryInfo` specification.

`CrossListQueryCache.GetSiteData` Method (SPSite, String) gets the cache data from the specified site and from the specified webUrl.

C: Cache.Get Method

Retrieves the specified item from the Cache object.

<http://msdn.microsoft.com/en-us/library/ms578951%28v=office.14%29.aspx>

<http://msdn.microsoft.com/en-us/library/ms519705%28v=office.14%29.aspx>

QUESTION 28

Question 28

You develop a SharePoint app for Contoso, Ltd. Contoso has offices in several countries. All of the local offices in each country are connected by using a Wide Area Network (WAN) Users store large data files in SharePoint document libraries. The users report that the files load very slowly.

You need to ensure that the files are cached the first time that the files are opened at a local office.

How should you complete the Windows PowerShell cmdlet?

(To answer, drag the appropriate code segment to the correct targets in the answer area. Each code segment

may be used once, more than once, or not at all You may need to drag the split bar between panes or scroll to view content)

Select and Place:

	Answer Area
Close()	Get-SpSite("http://contoso.com") ForEach {
Update();	\$spWeb = <input type="text"/>
CacheAllSchema	\$spWeb. <input type="text"/>
\$_ .GetSiteData()	\$spWeb. <input type="text"/>
\$_ .OpenWeb();	\$spWeb. <input type="text"/>
SetBranchCache	}
EnableBranchCacheHashGeneration	

Correct Answer:

	Answer Area
Close()	Get-SpSite("http://contoso.com") ForEach {
Update();	\$spWeb = \$_ .OpenWeb();
CacheAllSchema	\$spWeb. CacheAllSchema
\$_ .GetSiteData()	\$spWeb. Update();
\$_ .OpenWeb();	}
SetBranchCache	
EnableBranchCacheHashGeneration	

Section: [none]

Explanation

Explanation/Reference:

BranchCache is a feature of the Windows 7, Windows 8, Windows Server 2008 R2 and Windows Server 2012 operating systems that caches content from file and web servers on a wide area network (WAN) on computers at a local branch office. In a geographically distributed SharePoint Server 2013 environment, BranchCache can optimize WAN performance by caching large files that users download from SharePoint Server 2013.

SPWeb.**CacheAllSchema** property gets or sets a Boolean value that specifies whether caching of all schemas on the website is enabled.

<http://technet.microsoft.com/en-us/library/jj721440.aspx>

<http://technet.microsoft.com/en-us/library/hh831696.aspx>
<http://msdn.microsoft.com/en-us/library/microsoft.sharepoint.spweb.cacheallschema.aspx>

TestKing: Answer EnableBranchCacheHashGeneration.

QUESTION 29

Question 29

You have a SharePoint publishing site. The marketing team tags their documents by using a managed metadata field named Location. The site has been fully crawled. Documents are tagged with city names only.

A SharePoint app on the site displays search results by using the following term set:

Parent	Term name	Term ID
Term Store	Location	b49f64b3-4722-4336-9a5c-56c326b344d4
Location	Central	1acfae8a-70b4-4ce0-bfbf-96c0e711f8df
Central	Houston	b4c95e2f-32d7-460a-90b3-f7d8787fc48e
Central	Dallas	577c8e48-d5d9-4e5f-8e35-408c723feb11
Location	West	a79557ce-3db6-43f7-bfe3-81c652a10bf6
West	Las Vegas	11aaac5b-61a2-42ba-9529-09cbf23bb1c8
West	San Francisco	1489db3e-8540-4b83-8eaa-919467108011
Central	East	d0f8b6ca-2b57-460a-ad0c-62cb1b0c049d
East	Miami	2b81a4e9-4209-4083-8610-e3d25c397204

You create the following code segment to query the contents of the site (Line numbers are included for reference only)

```
01 function executeQuery() {  
02  
03     Results = {  
04         element: '', url: '', init: function (element) {  
05             Results.element = element;  
06             Results.url = _spPageContextInfo.webAbsoluteUrl +  
07             "/_api/search/query?querytext='" + queryTerms + "'";  
08         },  
09     }  
}
```

You need to create a Keyword Query Language (KQL) expression to return results for all assets in the Central region

Which code segment should you insert at line 02?

- A. var queryTerms ="Location";
- B. var queryTerms = "577c8e48-d5d9-4e5f-8e35-408c723feb11";
- C. var queryTerms = "b49f64b3-4722-4336-9a5c-56c326b344d4";
- D. var queryTerms = "owstaxidlocation: 1acfae8a-70b4-4ce0-bfbf-96c0e711f8df"

Correct Answer: D

Section: [none]

Explanation

Explanation/Reference:

When a managed metadata field is crawled, it creates 2 crawled properties

- **ows_taxid_fieldname** (which is automatically mapped to a managed property **"owstaxidfieldname"** and

- contains the term id)
- **ows_fieldname** (This contains the term label)

<http://sharepoint.stackexchange.com/questions/50140/querying-on-managed-metadata-fields-using-search>

TestKing: Answer C

QUESTION 30

Question 30

You create a SharePoint app that displays a list of documents for a company that sells insurance policies. The documents have been crawled by the Search service.

You create managed properties named Underwriter and Bonded.

You must locate the documents that meet the following criteria

- Created by using Microsoft Word 2002
- Contains the exact phrase "life policy"
- Were underwritten by Woodgrove

You need to design a search query that locates the required documents.

How should you complete the relevant code? (To answer, select the appropriate code segment from each drop-down list in the answer area)

Hot Area:

```
function executeQuery() {
```

var queryTerms = "

pol*	company:Woodgrove
life	underwriter:'Woodgrove'
\ "life policy\"	underwriter=Woodgrove
'life insurance'	

queryTerms += "

filetype:docx	write<10/01/2012";
fileextension:doc	
filetype:pdf	
fileextension:txt	

Correct Answer:

```
function executeQuery() {

    var queryTerms = "   "

    
    pol*
    life
    "\"life policy\""
    'life insurance'

    
    company:Woodgrove
    underwriter:'Woodgrove'
    underwriter=Woodgrove

    queryTerms += "  write<10/01/2012";

    
    filetype:docx
    fileextension:doc
    filetype:pdf
    fileextension:txt
}
```

Section: [none]

Explanation

Explanation/Reference:

QUESTION 31

Question 31

You create a SharePoint site collection for a law firm. You create the following objects in the site collection.

SharePoint object	Name	Description
Site column	CaseID	Contains numeric data
Content type	Case	Uses the CaseID site column
List	Cases	Uses the Case content type Contains archived and current legal case information Current cases have a CaseID that is more than 1000
Managed property	MPCaseID	Maps to the ows_CaseID crawled property

A user searches for a legal case. The search results must contain only current cases.

You need to create a custom result type that displays only current cases.

Which object should you use?

- A. Cases
- B. MPCaseID
- C. case
- D. ows_CaseID
- E. CaseID

Correct Answer: B

Section: [none]

Explanation

Explanation/Reference:

QUESTION 32

Question 32

You access a Records Management site in SharePoint. You create the following segment (Line numbers are included for reference only):

```
01 <!--#
02     var deliveryMethod = $getItemValue(ctx, "DeliveryMethod");
03     var tax = $getItemValue(ctx, "Tax");
04     var curTax = parseFloat(tax).toFixed(2);
05
06     var airbillTimeDays = airbillTime + ' days';
07     var outForDel = $getItemValue(ctx, "OutForDelivery");
08 _#-->
09
10 <table class="boldness">
11     <tr>
12         <td>Delivery Method: _#= deliveryMethod.toString() =#_</td>
13
14
15         <td>Out For Delivery: _#= outForDel.toString() =#_</td>
16     </tr>
17 </table>
```

Search results must display documents that contain specific keywords by using the following custom display template:

Delivery Method: Consolidated Messenger	Sales Tax: 2.78	Air Bill Time: 2 days	Out for
--	------------------------	------------------------------	----------------

You need to implement the custom display template.

What should you do? (Each correct answer presents part of the solution. Choose all that apply)

A. Insert the following code segment at line 14:

```
<td>Air Bill Time: _#= airbillTimeDays =#_</td>
```

B. Insert the following code segment at line 14:

```
<td>Air Bill Time: _#= airbilltime =#_</td>
```

C. Insert the following code segment at line 05:

```
var airbillTime = $getItemValue(ctx, "Air Bill Time");
```

D. Insert the following code segment at line 13:

```
<td>Sales Tax: _#= curTax =#_</td>
```

E. Insert the following code segment at line 14:

```
<td>Air Bill Time: _#= airbillTime =#_</td>
```

F. Insert the following code segment at line 13:

```
<td>Sales Tax:<#= tax =#></td>
```

Correct Answer: ACD

Section: [none]

Explanation

Explanation/Reference:

TestKing: Answer ACF

QUESTION 33

Question 33

You configure eDiscovery for a SharePoint Online site collection.

You need to configure permissions for eDiscovery users so that users are able to access all discoverable content.

What should you do?

- A. Add eDiscovery users to the Viewers group for the eDiscovery center.
- B. Grant eDiscovery users access to all content in each web application
- C. Grant eDiscovery users Contribute permissions to the eDiscovery center.
- D. Grant eDiscovery users site collection administrator permissions on every site collection that contains discoverable content.

Correct Answer: D

Section: [none]

Explanation

Explanation/Reference:

The article Plan for eDiscovery in SharePoint Server 2013 recommends that you create a security group to contain all users of the eDiscovery Center. After you create the security group, grant the security group permissions to access all discoverable content.

If you will grant permissions at the web application level, create a user policy that gives the security group full read permissions for each web application that contains discoverable content.

If you will grant permissions at the site collection level, make the security group a site collection administrator for each site collection that contains discoverable content.

Ensure that the security group has permissions to access all file shares and other websites that contain discoverable content.

<http://technet.microsoft.com/en-us/library/fp161514.aspx>

QUESTION 34

Question 34

You use Visual Studio to design a SharePoint solution for a company that provides computer support services to customers around the world.

The solution must list the customer service representatives that resolve the highest number of support requests. The solution also must allow filtering of customer service representatives by region.

You need to configure the solution to meet the requirements. Which steps should you take?
(Each correct answer presents part of the solution. Choose all that apply)

- A. Add a Recommended Items Web Part to the page.
- B. Add and configure a Refinement Web Part to the page.
- C. Add regions as property filters to the Search Results Web Part.
- D. Configure the query for the Content Search Web Part.

Correct Answer: CD

Section: [none]

Explanation

Explanation/Reference:



<http://www.gratisexam.com/>