

Microsoft 70-665 --> PRO: Microsoft Lync Server 2010, Administrator

Number: 70-665
Passing Score: 800
Time Limit: 120 min
File Version: 12.39



<http://www.gratisexam.com/>



Exam: 70-665

Microsoft PRO: Microsoft Lync Server 2010, Administrator

By: palavdin

Exam A: Multiple-choice
Exam B: Case study 1 Litware
Exam B: Case study 2 Contoso
Exam B: Case study 3 Adatum

Exam A

QUESTION 1

Your network has Microsoft Office Communications Server 2007 R2 installed. You migrate the Office Communications Server 2007 R2 infrastructure to Lync Server 2010. The network contains 2,000 users who use Microsoft Lync 2010 and 100 users who use Microsoft Office Communicator 2007 R2.

The corporate security policy states that when users sign in, they must restrict their presence information so that it is visible to only their contacts.

You need to recommend changes to the Lync Server 2010 infrastructure to meet the corporate security policy requirements.

What should you include in the recommendation?

- A. a Monitoring Server and a Client Version Policy
- B. Privacy Mode and a Client Version Policy
- C. a Monitoring Server and a Client Version Configuration
- D. Privacy Mode and a Response Group

Correct Answer: B

Section: (none)

Explanation

Explanation/Reference:

ok.

QUESTION 2

Your network contains an Active Directory forest. The functional level of both the domain and the forest is Windows Server 2003. The forest contains the following servers:

- A server that runs Microsoft Live Communications Server 2005 Service Pack 1 (SP1)
- A Front End Server that runs Microsoft Office Communications Server 2007 R2
- An Edge Server that runs Office Communications Server 2007 R2
- A Mediation Server that runs Office Communications Server 2007 R2
- An Office Communications Server 2007 Communicator Web Access (CWA) server.

You plan to migrate all users to Lync Server 2010. You need to recommend changes to the network to ensure that you can deploy Lync Server 2010 to the Active Directory forest.

What should you recommend?

- A. Raise the functional level of the domain to Windows Server 2008.
- B. Remove the Live Communications Server 2005 server and the CWA server.
- C. Remove the CWA server and the Edge Server.
- D. Raise the functional level of the forest to Windows Server 2008.

Correct Answer: B

Section: (none)

Explanation

Explanation/Reference:

ok.

elimination approach

QUESTION 3

Your network contains a Lync Server 2010 server that has Privacy Mode enabled for all users.

You need to plan the deployment of Response Groups.

What should you include in the plan?

- A. a Voice Policy for each Response Group
- B. the Attendant Console for each user configured as an Agent
- C. a trusted application for each Response Group
- D. modifications to the Contacts list of each user configured as an Agent

Correct Answer: D

Section: (none)

Explanation

Explanation/Reference:

?????

QUESTION 4

Your network has Lync Server 2010 deployed.

You plan to deploy devices that run Microsoft Lync 2010 Phone Edition.

You need to recommend changes to the network to support the Lync 2010 Phone Edition devices.

What should you include in the recommendation?

- A. Deploy a media gateway and a Mediation Server.
- B. Add a Client Version Policy and a Client Version Configuration.
- C. Deploy a media gateway and a Director.
- D. Add DNS records and DHCP options.

Correct Answer: D

Section: (none)

Explanation

Explanation/Reference:

ok.

QUESTION 5

Your network has Microsoft Office Communications Server 2007 R2 installed. Active Directory maintains telephone numbers in various formats. All phone numbers display to Office Communications Server 2007 R2 users in E.164 format.

You plan to migrate to Lync Server 2010.

You need to ensure that the phone numbers display in the same format for Microsoft Lync 2010 users and Office Communications Server 2007 R2 users.

Which action should you include in the migration plan?

- A. Run the Enterprise Voice Route Helper.
- B. Copy the RTC\rtcab database.
- C. Copy the address book normalization rules.
- D. Copy the RTC\dyn database.

Correct Answer: C

Section: (none)

Explanation

Explanation/Reference:

Explanation:

QUESTION 6

Your network has federation enabled with networks that run Microsoft Office Communications Server 2007 R2 and Windows Live.

You plan to deploy a Lync Server 2010 Edge pool that will contain three servers.

You need to plan a deployment solution to ensure that the Edge services are available if a server fails.



<http://www.gratisexam.com/>

What should you include in the plan?

- A. two hardware load balancers on the internal side of the perimeter network two reverse proxies on the external side of the perimeter network
- B. one hardware load balancer on the internal side of the perimeter network DNS load balancing on the external side of the perimeter network
- C. one hardware load balancer on the internal side of the perimeter network one hardware load balancer on the external side of the perimeter network
- D. one hardware load balancer on the external side of the perimeter network two reverse proxies on the external side of the perimeter network

Correct Answer: C

Section: (none)

Explanation

Explanation/Reference:

this.

QUESTION 7

Your network has Lync Server 2010 deployed.

You need to recommend a tool to simulate client connectivity to Lync services.

What tool should you recommend?

- A. Lync Server 2010 Deployment Wizard
- B. Lync Server 2010 Topology Builder
- C. Lync Server 2010 Control Panel
- D. Lync Server Management Shell

Correct Answer: D

Section: (none)

Explanation

Explanation/Reference:

ok.

QUESTION 8

Your company uses a hosted Microsoft Exchange Server 2010 solution that has Unified Messaging (UM) enabled.

You plan to deploy Lync Server 2010 at the company's main office.

You need to recommend a solution that integrates Lync services and UM.

What should you include in the recommendation?

- A. a federation trust
- B. voice mail rerouting policies
- C. hosted voice mail policies
- D. Call Admission Control

Correct Answer: C

Section: (none)

Explanation

Explanation/Reference:

ok.

QUESTION 9

Your network has a Lync Server 2010 infrastructure that contains the following servers:

- One Mediation Server
- Two Directors in a Director pool
- Two Edge Servers in an Edge pool
- Two Enterprise Edition servers in a Front End pool

You plan to create a disaster recovery site.

You need to recommend which servers are required for the disaster recover site to ensure that IM and Presence information is available if the main site is unavailable. The solution must ensure that remote users can access the disaster recovery site.

Which two roles should you include in the recommendation? (Each correct answer presents part of the solution. Choose two.)

- A. Director
- B. Mediation Server
- C. Front End Server
- D. Edge Server

Correct Answer: CD

Section: (none)

Explanation

Explanation/Reference:

ok.

QUESTION 10

Your network has Lync Server 2010 deployed.

You need to recommend a solution for the companys help desk that meets the following requirements:

- When users call the help desk, they must be routed to the first available help desk agent.

- Help desk agents must be able to control whether a help desk call is routed to them.

What should you include in the recommendation?

- A. a Response Group configured for formal agent participation
- B. a voice route and a call park
- C. a voice route and a custom dial plan
- D. a Response Group configured for informal agent participation

Correct Answer: A

Section: (none)

Explanation

Explanation/Reference:

Explanation:

QUESTION 11

Your network has a Lync Server 2010 infrastructure that contains four servers. The servers are configured as shown in the following table.

Server name	Server role
Server1	Standard Edition Front End Server
Server2	Enterprise Edition Front End Server
Server3	Director
Server4	Microsoft SQL Server 2008

You need to deploy the Archiving Server role.

To which server should you deploy the Archiving Server role?

- A. Server4
- B. Server3
- C. Server1
- D. Server2

Correct Answer: A

Section: (none)

Explanation

Explanation/Reference:

99%

QUESTION 12

Your network has a Lync Server 2010 infrastructure that contains the following servers:

- Two Edge Servers
- One Mediation Server
- One reverse proxy server
- Three Enterprise Edition servers in a Front End pool

You need to recommend changes to ensure that the Address Book service for remote users is available if a single server fails. The solution must minimize costs.

Which components should you recommend adding to the network?

- A. one Mediation Server and one hardware load balancer
- B. one Mediation Server and DNS load balancing
- C. one reverse proxy server and one hardware load balancer
- D. one reverse proxy server and DNS load balancing

Correct Answer: C

Section: (none)

Explanation

Explanation/Reference:

this. 99%

QUESTION 13

Your company has a main office and a branch office.

The network has a Lync Server 2010 infrastructure that contains the following components:

- Call Admission Control enabled in both offices
- A WAN link that connects the branch and the main office
- A Survivable Branch Appliance (SBA) in the branch office
- A Lync Server 2010 Enterprise Edition pool in the main office

All users run Microsoft Office Communicator 2007 R2. Users in the branch office report that they experience poor audio quality when they initiate PC-to-PC calls to users in the main office.

You need to recommend a solution that improves the audio quality of PC-to-PC calls across the WAN link.

What should you include in the recommendation?

- A. Deploy a new Global Client Policy.
- B. Deploy a Mediation Server in the branch office.
- C. Install Microsoft Lync 2010 on all client computers.
- D. Install the Enterprise Voice Route Helper on all client computers.

Correct Answer: C

Section: (none)

Explanation

Explanation/Reference:

QUESTION 14

Your network has Lync Server 2010 deployed.

You need to create a backup plan to ensure that the Response Group and the Conferencing Attendant configuration can be restored.

Which tool should you include in the backup plan?

- A. LcsCmd
- B. Dbimpexp
- C. ApplicationSettingsExport
- D. Topology Builder

Correct Answer: C

Section: (none)

Explanation

Explanation/Reference:

ok. this. elimination approach

QUESTION 15

You plan to deploy Lync Server 2010.

You need to ensure that the planned deployment supports Enhanced 911 (E911) services.

What should you include in the planned deployment?

- A. Call Admission Control
- B. a Location Information Server
- C. malicious call tracing
- D. media bypass

Correct Answer: B

Section: (none)

Explanation

Explanation/Reference:

ok.

QUESTION 16

You plan to deploy a Lync Server 2010 infrastructure that will contain the following server roles:

- A Director
- An Edge Server
- A Front End Server
- A Mediation Server
- * A monitoring

You need to recommend the minimum number of Windows servers required for the planned deployment.

How many servers should you recommend?

- A. 2
- B. 1
- C. 3
- D. 4

Correct Answer: C

Section: (none)

Explanation

Explanation/Reference:

ok. this.

QUESTION 17

Your network contains an analog TDM-PBX.

You plan to transition the telephony infrastructure to Lync Server 2010.

You need to recommend a solution that meets the following requirements:

- Ensures that all users can initiate calls to the PSTN.
- Prevents internal calls from being routed through the PSTN.
- Ensures that all TDM-PBX users and Lync Server 2010 users can call each other.

Which two components should you include in the recommendation? (Each correct answer presents part of the solution. Choose two.)

- A. SIP trunk
- B. Media Gateway
- C. Edge Server
- D. Director
- E. Mediation Server

Correct Answer: BE

Section: (none)

Explanation

Explanation/Reference:

ok.

QUESTION 18

Your network has Lync Server 2010 deployed.

You need to recommend a strategy to control meetings. The strategy must meet the following requirements:

- Limit all meetings to a maximum of 100 participants.
- Disable application sharing for all participants, except for 10 participants.

What should you include in the recommendation?

- A. Modify the Global Meeting Configuration settings and create a new User Conferencing Policy.
- B. Modify the Global Meeting Configuration settings and create a new collection of Pool Meeting Configuration settings.
- C. Modify the Global Conferencing Policy and create a new User Conferencing Policy.
- D. Modify the Global Conferencing Policy and create a new collection of Pool Meeting Configuration settings.

Correct Answer: C

Section: (none)

Explanation

Explanation/Reference:

ok.

QUESTION 19

Your network contains a Microsoft Exchange Server 2010 organization.

You deploy Lync Server 2010 on the network.

You need to ensure that you can enable Unified Messaging (UM) for all Microsoft Lync 2010 users.

What should you add to the network before you enable UM?

- A. a Director
- B. an Enterprise Voice route
- C. an Enterprise Voice dial plan
- D. a Mediation Server

Correct Answer: C

Section: (none)

Explanation

Explanation/Reference:

this.

QUESTION 20

Your network has Lync Server 2010 deployed. The network administrator plans to use a protocol analyzer to identify network trends.

You need to identify the protocol required to monitor Microsoft Lync 2010 voice traffic.

Which protocol should you identify?

- A. IPSec
- B. NTP
- C. CIPE
- D. SRTP

Correct Answer: D

Section: (none)

Explanation

Explanation/Reference:

ok.

QUESTION 21

Your network has Lync Server 2010 deployed.

You plan to deploy two Edge Servers.

You need to recommend a solution to ensure that remote users can sign in to their Lync account if a single server fails.

What should you include in the recommendation?

- A. a Network Load Balancing (NLB) cluster
- B. a hardware load balancer
- C. a Director pool
- D. a reverse proxy server

Correct Answer: B

Section: (none)

Explanation

Explanation/Reference:

99%

QUESTION 22

Your network contains a Lync Server 2010 infrastructure that has the following configurations:

- Disabled strict DNS naming
- One Edge Server named Edge01
- One SIP domain named contoso.com
- One set of simple URLs for the contoso.com domain
- One Standard Edition pool named se01.contoso.com

You need to identify the certificate requirements for the internal Web services.



<http://www.gratisexam.com/>

Which Subject Alternative Names (SANs) should you specify on the certificate?

- A. contoso.com and edge01.contoso.com
- B. edge01.contoso.com, meet.contoso.com, dialin.contoso.com, and admin.contoso.com
- C. contoso.com and se01.contoso.com
- D. se01.contoso.com, meet.contoso.com, dialin.contoso.com, and admin.contoso.com

Correct Answer: D

Section: (none)

Explanation

Explanation/Reference:

Explanation:

QUESTION 23

(Click the Exhibit button.)

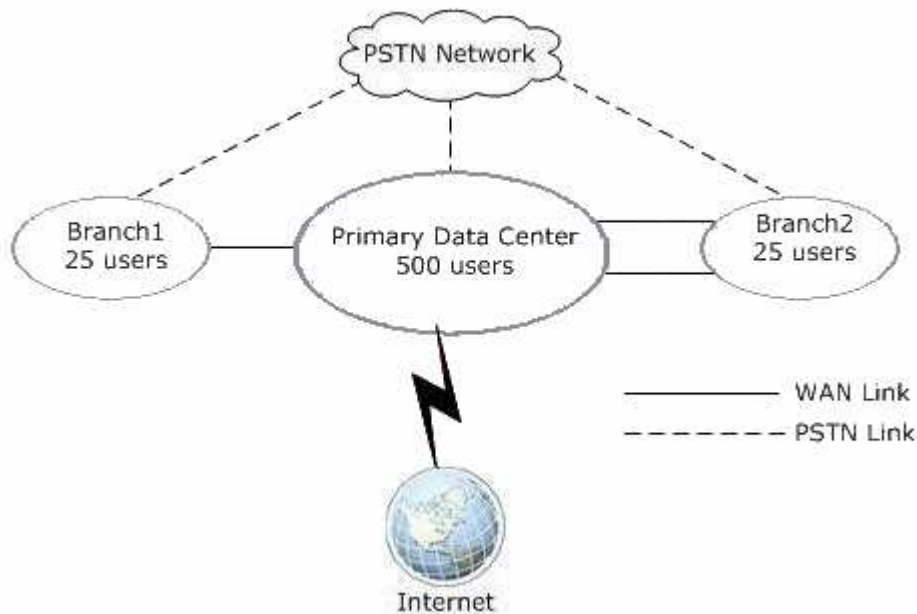
Your network is configured as shown in the exhibit.

You deploy two Lync Server 2010 Front End Servers in the company's data center and you enable Enterprise Voice.

You need to recommend a voice strategy for the branch offices that meets the following requirements: If a single WAN link fails, users in all offices must be able to call each other. The number of Lync Server 2010 servers in the branch offices must be minimized.

What should you include in the recommendation?

Exhibit:



- A. In Branch1, deploy a Survivable Branch Appliance (SBA).
In Branch2, deploy a PSTN gateway.
- B. In Branch1, deploy a Lync Server 2010 Mediation Server.
In Branch2, deploy a PSTN gateway.
- C. In Branch1, deploy a Lync Server 2010 Mediation Server.
In Branch2, deploy a Lync Server 2010 Mediation Server.
- D. In Branch1, deploy a Survivable Branch Appliance (SBA).
In Branch2, deploy a Lync Server 2010 Mediation Server.

Correct Answer: A

Section: (none)

Explanation

Explanation/Reference:

this.

QUESTION 24

You plan to deploy a Lync Server 2010 Director pool named `dirpool.contoso.com` that will contain three servers.

The servers will be configured as shown in the following table.

Server name	IP address
server1.contoso.com	192.168.10.25
server2.contoso.com	192.168.20.26
server3.contoso.com	192.168.10.27

You plan to implement DNS load balancing for the Director pool.

You need to recommend which DNS records are required for the planned deployment.

Which DNS records should you recommend for `dirpool.contoso.com`?

- A. three Host (A) records
- B. three Host information (HINFO) records
- C. four Service Location (SRV) records
- D. four Alias (CNAME) records

Correct Answer: A

Section: (none)

Explanation

Explanation/Reference:

ok.

QUESTION 25

Your company has two offices. The network has Lync Server 2010 deployed. All users make PC -to-PC calls by using Microsoft Lync 2010.

The estimated bandwidth for various codecs is shown in the following table.

Codec	Bandwidth
G.711	59.8Kbps
G.722	42.8 Kbps
Siren	22 Kbps
RT Audio wideband (16 KHz)	34.8 Kbps

You need to calculate the minimum amount of bandwidth required to support 10 simultaneous PC-to-PC calls between the two offices.

How much bandwidth is required?

- A. 1196 Kbps
- B. 220 Kbps
- C. 856 Kbps
- D. 696 Kbps

Correct Answer: D

Section: (none)

Explanation

Explanation/Reference:

ok.

uc peer-to-peer voice call 67Kb/s per call. Pg.7-8

QUESTION 26

Your network has a Lync Server 2010 infrastructure that contains three servers. The servers are configured as shown in the following table.

Server name	Server role
Server1	Front End Server
Server2	Mediation Server
Server3	Mediation Server

Server2 and Server3 are in a Mediation pool.

You plan to temporarily remove Server2 from the network. You need to prevent new voice calls from being routed to Server2. The solution must not disconnect calls in progress.

What should you do?

- A. From the Lync Server 2010 Control Panel, modify the status of Server2.
- B. From the Lync Server 2010 Control Panel, modify the Voice Routing settings.
- C. From the Lync Server 2010 Topology Builder, edit the properties of the PSTN gateway.
- D. From the Lync Server 2010 Topology Builder, edit the properties of the Mediation pool.

Correct Answer: A

Section: (none)

Explanation

Explanation/Reference:

ok.

QUESTION 27

Your network has a Lync Server 2010 infrastructure that has Enterprise Voice enabled.

You need to create a Response Group.

What should you do?

- A. Configure the announcement service and create a contact.
- B. Create a call park and a queue.
- C. Create a contact, a group, an agent, and a queue.
- D. Create a group, an agent, a queue, and an Interactive Voice Response (IVR) workflow.

Correct Answer: D

Section: (none)

Explanation

Explanation/Reference:

ok.

QUESTION 28

Your network has Lync Server 2010 deployed.

You need to ensure that an administrator named Admin1 can perform the following administrative tasks:

- Move users.
- Assign policies.

You must achieve this goal by assigning the minimum amount of rights to Admin1.

Which role should you assign to Admin1?

- A. CsAdministrator
- B. CsHelpDesk
- C. CsLocationAdministrator
- D. CsUserAdministrator

Correct Answer: D

Section: (none)

Explanation

Explanation/Reference:

ok.

QUESTION 29

Your network has Lync Server 2010 deployed. Several users report that they are unable to add more contacts to their Contacts lists.

You need to verify whether the users' Contacts lists reached their limit.

What should you do?

- A. At the command prompt, run cerror.exe.
- B. At the command prompt, run dbanalyze.exe.
- C. From the Lync Server Management Shell, run the Get-CsUser cmdlet.
- D. From the Lync Server Management Shell, run the Get-CsUserDatabaseState cmdlet.

Correct Answer: B

Section: (none)

Explanation

Explanation/Reference:

ok.

QUESTION 30

Your network contains a Lync Server 2010 server that has Privacy Mode enabled for all users. You need to plan the deployment of Response Groups. What should you include in the plan?

- A. a Voice Policy for each Response Group
- B. the Attendant Console for each user configured as an Agent
- C. a trusted application for each Response Group
- D. modifications to the Contacts list of each user configured as an Agent

Correct Answer: D

Section: (none)

Explanation

Explanation/Reference:

ok. this

When you assign users as response group agents, inform them that, if they have Privacy mode enabled, they need to search for "RGS Presence Watcher" contacts and add them to their Contacts list. Agents who have Privacy mode enabled but who do not have "RGS Presence Watcher" in their Contacts list cannot receive calls to the response group. Agents who do not have Privacy mode enabled are not affected. (<http://technet.microsoft.com/en-us/library/gg398917.aspx>)

QUESTION 31

Your network has Lync Server 2010 deployed. The network contains four servers. The servers are configured as shown in the following table.

Server name	Server role	Pool name
Server1	Enterprise Edition Front End Server	Pool01
Server2	Enterprise Edition Front End Server	Pool01
Server3	Standard Edition Front End Server	Pool02
Server4	None	None

You need to deploy a solution gather the following information:

- * Call detail records
- * Quality of Experience (QoE)

What should you do?

- A. Deploy the Monitoring Server role on Server1 and associate the role with Pool01. Deploy the Monitoring Server role on Server3 and associate the role with Pool02.
- B. Deploy the Monitoring Server role and the Archiving Server role on Server1, Server2, and Server3 and associate the roles ...
- C. xxxx
- D. Deploy the Monitoring Server role on Server4 and associate the role with Pool01 and Pool02

Correct Answer: D

Section: (none)

Explanation

Explanation/Reference:

99%

QUESTION 32

Your network has Lync Server 2010 deployed.

You need to recommend a strategy to reproduce the Lync Server 2010 infrastructure at a disaster recovery site.

Which tool should you include in recommendation?

- A. User Replicator
- B. Topology Builder
- C. Best Practices Analyzer
- D. DbAnalyze

Correct Answer: B

Section: (none)

Explanation

Explanation/Reference:

ok.

QUESTION 33

You plan to deploy a Lync Server 2010 infrastructure that will contain the following components:

- * A Director pool
- * A Front End pool
- * A Monitoring Server
- * A reverse proxy array

* A Microsoft SQL Server store

You need to identify which Lync components use DNS load balancing.

Which two roles should you identify? (Choose two.)

- A. Monitoring Server
- B. reverse proxy array
- C. Director pool
- D. Front End pool
- E. SQL Server store

Correct Answer: CD

Section: (none)

Explanation

Explanation/Reference:

ok.

QUESTION 34

Your company has a main office and a branch office. The offices connect to each other by using a WAN link.

The main office has a Lync Server 2010 Front End pool.

All users use devices that run Microsoft Lync 2010 Phone Edition. All users make PC-to-PC calls.

You need to recommend a solution to ensure that if the WAN link fails, users in the branch office can make calls to users in the main office by using the PSTN.

What should you include adding to the branch office?

- A. a Front End Server
- B. a Mediation Server
- C. a Survivable Branch Appliance (SBA)
- D. an Edge Server

Correct Answer: C

Section: (none)

Explanation

Explanation/Reference:

ok.

QUESTION 35

Your network has Lync Server 2010 deployed.

You plan to deploy Enterprise Voice.

You need to recommend an Enterprise Voice solution that meets the following requirements:

- * Ensures that users can make voice calls to the PSTN
- * Ensures that users can make voice calls if a single server or a single device fails

- A. two media gateways and a Mediation pool that contains two servers
- B. two media gateways and a Director pool that contains two servers
- C. two session border controllers and two media gateways

D. Network Load Balancing (NLB) and a Director pool that contains two servers

Correct Answer: A

Section: (none)

Explanation

Explanation/Reference:

ok.

QUESTION 36

Your company has a main office and five branch offices.

The network has a Lync Server 2010 infrastructure that contains the following components:

- * A Survivable Branch Appliance (SBA) in each office
- * A Lync Server 2010 Enterprise Edition pool in the main office
- * A WAN link that connects the main office to each branch office

Users in the branch office report that they experience poor audio quality when they initiate voice calls.

You need to recommend a solution that improves the audio quality of calls initiated by the branch office users.

What should you include in the recommendation?

- A. a dedicated Mediation Server in each branch office
- B. Call Admission Control in the main office
- C. SBA in the main office
- D. an Edge Server in each branch office

Correct Answer: B

Section: (none)

Explanation

Explanation/Reference:

QUESTION 37

You plan to deploy a Director pool named dirpool.contoso.com. The Director pool will contain three servers named dir-01.contoso.com, dir-02.contoso.com, and dir-03.contoso.com.

You need to identify the names that are required for the Director pool certificate.

Which names should you identify?

- A. a common name of dir-01.contoso.com and Subject Alternate Name (SAN) entries of dir-01.contoso.com, dir-03.contoso.com, and dir-02.contoso.com.
- B. a common name of sip.contoso.com and Subject Alternate Name (SAN) entries of dir-01.contoso.com, dir-02.contoso.com, dir-03.contoso.com, and sip.contoso.com
- C. a common name of dirpool.contoso.com and Subject Alternate Name (SAN) entries of dir-01.contoso.com, dir-03.contoso.com, and dir-02.contoso.com, and dirpool.contoso.com
- D. a common name of contoso.com and Subject Alternate Name (SAN) entries of dir-01.contoso.com, dir-02.contoso.com, dir-03.contoso.com, and contoso.com

Correct Answer: C

Section: (none)

Explanation

Explanation/Reference:

ok.

QUESTION 38

You plan to deploy a Lync Server 2010 infrastructure that will contain one SIP domain. The infrastructure will support Web and dial-in conferencing for internal and remote users. Each simple URL will have a unique FQDN.

You need to recommend the DNS records required for the simple URLs.

Which records should you recommend?

- A. three external Text (TXT) records and three internal TXT records
- B. three external Alias (CNAME) records and three internal CNAME records
- C. two external Host (A) records and three internal A records
- D. two external Service Location (SRV) records and two internal SRV records

Correct Answer: C

Section: (none)

Explanation

Explanation/Reference:

ok.

in:

web.contoso.com

dialin.contoso.com

ext:

web.contoso.com

dialin.contoso.com

admin.contoso.com

QUESTION 39

You plan to integrate Lync Server 2010 and Microsoft Exchange Server 2010 Unified Messaging (UM).

You need to recommend which tasks must be performed to integrate Lync services and UM.

What should you include in the recommendation?

- A. Response Group agents
- B. voice routes
- C. PSTN Usage records
- D. UM dial plans

Correct Answer: D

Section: (none)

Explanation

Explanation/Reference:

???

like in test4actual.com

QUESTION 40

You plan to deploy a Lync Server 2010 infrastructure that will contain four servers. The servers will be configured as shown in the following table.

Server name	Server role
Server1	Front End Server
Server2	Consolidated Edge Server
Server3	Director
Server4	Mediation Server

The Lync Server 2010 infrastructure will use Public IM Connectivity (PIC).

You need to identify which server requires a certificate issued by a trusted certification authority (CA) on the Internet.

Which server should you identify?

- A. Server1
- B. Server2
- C. Server3
- D. Server4

Correct Answer: B

Section: (none)

Explanation

Explanation/Reference:

ok.

QUESTION 41

Your network has a Lync Server 2010 infrastructure that has Enterprise Voice enabled.

The Lync Server 2010 infrastructure contains the following components:

- * a SIP trunk
- * an Archiving Server
- * Two Edge Servers in an Edge pool
- * Three Lync Server 2010 Enterprise Edition servers in a Front End pool

You need to recommend changes to the Lync Server 2010 infrastructure to support Enhanced 911 (E911) services.

What should you include in the recommendation?

- A. a Monitoring Server
- B. an Edge Server
- C. a Director
- D. a Mediation Server

Correct Answer: D

Section: (none)

Explanation

Explanation/Reference:

ok.

QUESTION 42

Your network has a Lync Server 2010 deployed. All client computers have Microsoft Office Communicator 2007 R2 installed.

You need to recommend a strategy to control the bandwidth utilization of Office Communicator 2007 R2.

What should you include in the recommendation?

- A. Response Groups
- B. Group Policies
- C. Voice Policies
- D. media bypass

Correct Answer: C

Section: (none)

Explanation

Explanation/Reference:



<http://www.gratisexam.com/>

last answer was "voice policies", but i think most close one is "Media Bypass".

Media Bypass is unsupported for OCS 2007r2 clients.

<http://voipnorm.blogspot.com/2010/11/lync-2010-media-bypass-and-cac-part-3.html>

QUESTION 43

Your company has offices in North America and Europe.

You plan to deploy Lync Server 2010.

You need to gather information about the existing telephony infrastructure to design a dial plan for the planned deployment.

Which information should you gather? (Each correct answer presents part of the solution. Choose two)

- A. the phone number patterns of each office
- B. the analog phone devices in use
- C. the IP phone devices in use
- D. the telephony locales of each office

Correct Answer: AD

Section: (none)

Explanation

Explanation/Reference:

ok.

QUESTION 44

Your company has a main office and a branch office. Server network routes exist between the offices.

You plan to deploy Lync Server 2010.

You need to recommend a solution that distributes voice traffic over the network routes.

What should you include in the recommendation?

- A. in-band provisioning
- B. a Survivable Branch Appliance (SBA)
- C. Call Admission Control
- D. a Director pool

Correct Answer: C

Section: (none)

Explanation

Explanation/Reference:

ok.

QUESTION 45

Your network has a Lync Server 2010 infrastructure that contains the following servers:

- * a Director
- * an Edge Server
- * a Front End Server
- * a Mediation Server

You need to deploy a solution that meets the following requirements:

- * Gathers an inventory of all IP phones on the network.
- * Gathers the usage statistics of all IP phones on the network.

What should you deploy?

- A. a server that runs Microsoft System Center Operations Manager
- B. a Monitoring Server
- C. a server that runs Microsoft System Center Configuration Manager
- D. an Archiving Server

Correct Answer: C

Section: (none)

Explanation

Explanation/Reference:

99%

QUESTION 46

Your network is configured as shown in the exhibit. (Click the Exhibit button.)

<<SORRY FORGOT ABOUT EXHIBIT>>

You deploy two Lync Server 2010 Front End Servers in the company's data center and you enable Enterprise Voice.

You need to recommend a voice strategy for the branch offices that meets the following requirements:

- * If a single WAN link fails, users in all offices must be able to call each other.
- * The number of Lync Server 2010 servers in the branch offices must be minimized.

What should you include in the recommendation?

- A. In Branch1, deploy a Survivable Branch Appliance (SBA). In Branch2, deploy a Lync Server 2010 Mediation Server.
- B. In Branch1, deploy a Lync Server 2010 Mediation Server. In Branch2, deploy a PSTN gateway.

- C. In Branch1, deploy a Lync Server 2010 Mediation Server. In Branch2, deploy a Lync Server 2010 Mediation Server.
- D. In Branch1, deploy a Survivable Branch Appliance (SBA). In Branch2, deploy a PSTN gateway.

Correct Answer: D

Section: (none)

Explanation

Explanation/Reference:

QUESTION 47

Codec	Bandwidth
RTAudio (8 kHz)	25.9 Kbps
RTAudio (16 kHz)	34.8 Kbps
Siren	22 Kbps
G.711	59.8 Kbps
G.722	42.8 Kbps
RTVideo (VGA 30 fps)	492 Kbps

You plan to deploy a solution to support conference calls that have the following characteristics:

- * Use the RTVideo (VGA 30 fps) codec for video
- * Include three participants who use Microsoft Lync 2010 and require audio and video.
- * Include two participants who use Microsoft Office Communicator 2007 R2 and require audio.

You need to calculate the maximum amount of bandwidth that will be used by the conference call.

How much bandwidth will be used by the conferencing server?

- A. 784 Kpbs
- B. 1094 Kpbs
- C. 1648 Kpbs
- D. 3062 Kpbs

Correct Answer: C

Section: (none)

Explanation

Explanation/Reference:

10-534 Pg.7-8

G.722 audio codec for Lync 2010	3x 42.8 =128.4
RTV video codec for Lync 2010	3x 492 = 1476
Siren audio codec for OCS 2007r2	2x 22 = 44

1648.4

Exam B

QUESTION 1

Click the Case Study button to review the scenario.

You need to recommend changes to the current Lync Server 2010 infrastructure to meet the company's compliance requirements.

What should you include in the recommendation?

Case Study Title (Case Study):
Litware, Inc.

Company Overview

Litware, Inc. is a global publishing company that has 1,000 employees.

Physical Locations

The company has a main office and a branch office. The main office is located in New York. The branch office is located in London. Each office has 500 users. Users regularly travel between the London office and the New York office. Users occasionally work from home.

Existing Environment

Network Infrastructure

The network contains an Active Directory domain named litwareinc.com. Litwareinc.com contains the servers configured as shown in the following table.

Server role	Server configuration
Microsoft Exchange Server 2010	<ul style="list-style-type: none">Two servers that run the Mailbox server role, the Hub Transport server role, and the Client Access server role in the London officeTwo servers that run the Mailbox server role, the Hub Transport server role, and the Client Access server role in the New York officeA single database availability group (DAG) that contains two mailbox databasesAll DAG members maintain a copy of each database
Lync Server 2010	<ul style="list-style-type: none">A Standard Edition server in the London officeA Standard Edition server in the New York officeA Mediation Server and a PSTN gateway in the London officeA Mediation Server and a PSTN gateway in the New York officeA consolidated Edge Server in the London officeA consolidated Edge Server in the New York officeAn Archiving Server that runs Microsoft SQL Server 2008 in the London office
Microsoft Forefront Threat Management Gateway (TMG)	<ul style="list-style-type: none">A two-node reverse proxy and a caching array that has Network Load Balancing (NLB) in the London officeA two-node reverse proxy and a caching array that has Network Load Balancing (NLB) in the New York office

All client computers run Windows XP Professional Service Pack 3 (SP3) and Microsoft Office Outlook 2007. Client computers run either Microsoft Office Communicator 2007 R2 or Microsoft Lync 2010.

Requirements

Business Goals

Litware has the following business goals:

- Minimize software costs.
- Minimize hardware costs.
- Minimize administrative effort.

Planned Changes

Litware plans to implement the following changes:

- Deploy Lync 2010 to all client computers.
- Implement Web conferencing and Web conferencing federation.
- Deploy Exchange Server 2010 Unified Messaging (UM) and integrate

Technical Requirements

Litware must meet the following technical requirements:

- Remote users must have access to IM, Web conferencing, and A/V conferencing.
- Users who use Office Communicator 2007 R2 must receive a message that contains a download link for Lync 2010.
- Client computers that run Office Communicator 2007 R2 must be prevented from connecting to the Lync infrastructure.

Bandwidth Management Requirements

Litware must meet the following requirements for managing bandwidth:

- Limit the total amount of bandwidth consumed on the network.
- Ensure that the amount of bandwidth available provides good call quality.
- Provide reporting on calls that could not be completed due to insufficient bandwidth.
- Reroute calls to alternate paths when there is an insufficient amount of bandwidth available to make a call.

Conferencing Requirements

The conferencing features required by the Active Directory groups are listed in the following table.

Group	Video	Audio	Data collaboration	Application sharing	Recording	Anonymous participants
Managers	X	X	X	X	X	X
Team leaders	X	X	X	X		
Sales	X	X	X			X
Accounts		X	X	X		
Call center		X				
Main office users		X	X			

*X indicates a required feature.

Availability Requirements

Litware must meet the following requirements:

- Ensure that remote users can join Web conferences if a single Edge Server fails.
- Ensure that Lync clients can retrieve voice mails if a single Exchange server fails.
- Ensure that internal users can sign in to Lync 2010 if a Lync Server 2010 Front End Server fails.
- Ensure that archived instant messages can be recovered if a database is corrupted or if storage fails.
- Ensure that the Central Management Store (CMS) is accessible if a single server fails or if the CMS is corrupted.

Compliance Requirements

Litware must meet the following compliance requirements:

- All IM conversations must be archived.
- Call detail records must be captured for all internal and all external calls.

- A. a trusted application pool
- B. a Director pool
- C. a Monitoring Server
- D. an additional Archiving Server

Correct Answer: C

Section: (none)

Explanation

Explanation/Reference:

not sure.

previous answer was Archiving Server.

I think it's Monitoring, just because it'll be enough 1 archiving server for 1000 users.

in test4actual.com answer is "Monitoring"

AboAbel answer is "Monitoring"

QUESTION 2

Click the Case Study button to review the scenario.

You need to recommend a client migration solution that meets the company's technical requirements.

What should you include in the recommendation?

Case Study Title (Case Study):

Litware, Inc.

Company Overview

Litware, Inc. is a global publishing company that has 1,000 employees.

Physical Locations

The company has a main office and a branch office. The main office is located in New York. The branch office is located in London. Each office has 500 users. Users regularly travel between the London office and the New York office. Users occasionally work from home.

Existing Environment

Network Infrastructure

The network contains an Active Directory domain named litwareinc.com. Litwareinc.com contains the servers configured as shown in the following table.

Server role	Server configuration
Microsoft Exchange Server 2010	<ul style="list-style-type: none">▪ Two servers that run the Mailbox server role, the Hub Transport server role, and the Client Access server role in the London office▪ Two servers that run the Mailbox server role, the Hub Transport server role, and the Client Access server role in the New York office▪ A single database availability group (DAG) that contains two mailbox

	databases <ul style="list-style-type: none"> ▪ All DAG members maintain a copy of each database
Lync Server 2010	<ul style="list-style-type: none"> ▪ A Standard Edition server in the London office ▪ A Standard Edition server in the New York office ▪ A Mediation Server and a PSTN gateway in the London office ▪ A Mediation Server and a PSTN gateway in the New York office ▪ A consolidated Edge Server in the London office ▪ A consolidated Edge Server in the New York office ▪ An Archiving Server that runs Microsoft SQL Server 2008 in the London office
Microsoft Forefront Threat Management Gateway (TMG)	<ul style="list-style-type: none"> ▪ A two-node reverse proxy and a caching array that has Network Load Balancing (NLB) in the London office ▪ A two-node reverse proxy and a caching array that has Network Load Balancing (NLB) in the New York office

All client computers run Windows XP Professional Service Pack 3 (SP3) and Microsoft Office Outlook 2007. Client computers run either Microsoft Office Communicator 2007 R2 or Microsoft Lync 2010.

Requirements

Business Goals

Litware has the following business goals:

- Minimize software costs.
- Minimize hardware costs.
- Minimize administrative effort.

Planned Changes

Litware plans to implement the following changes:

- Deploy Lync 2010 to all client computers.
- Implement Web conferencing and Web conferencing federation.
- Deploy Exchange Server 2010 Unified Messaging (UM) and integrate

Technical Requirements

Litware must meet the following technical requirements:

- Remote users must have access to IM, Web conferencing, and A/V conferencing.
- Users who use Office Communicator 2007 R2 must receive a message that contains a download link for Lync 2010.
- Client computers that run Office Communicator 2007 R2 must be prevented from connecting to the Lync infrastructure.

Bandwidth Management Requirements

Litware must meet the following requirements for managing bandwidth:

- Limit the total amount of bandwidth consumed on the network.
- Ensure that the amount of bandwidth available provides good call quality.
- Provide reporting on calls that could not be completed due to insufficient bandwidth.
- Reroute calls to alternate paths when there is an insufficient amount of bandwidth available to make a call.

Conferencing Requirements

The conferencing features required by the Active Directory groups are listed in the following table.

Group	Video	Audio	Data collaboration	Application sharing	Recording	Anonymous participants
-------	-------	-------	--------------------	---------------------	-----------	------------------------

Managers	X	X	X	X	X	X
Team leaders	X	X	X	X		
Sales	X	X	X			X
Accounts		X	X	X		
Call center		X				
Main office users		X	X			

*X indicates a required feature.

Availability Requirements

Litware must meet the following availability requirements:

- Ensure that remote users can join Web conferences if a single Edge Server fails.
- Ensure that Lync clients can retrieve voice mails if a single Exchange server fails.
- Ensure that internal users can sign in to Lync 2010 if a Lync Server 2010 Front End Server fails.
- Ensure that archived instant messages can be recovered if a database is corrupted or if storage fails.
- Ensure that the Central Management Store (CMS) is accessible if a single server fails or if the CMS is corrupted.

Compliance Requirements

Litware must meet the following compliance requirements:

- All IM conversations must be archived.
 - Call detail records must be captured for all internal and all external calls.
- A. Modifications to the Global Client Version Configuration settings
 - B. Modifications to the Global Client Version Policy
 - C. Group Policy objects (GPOs) that define the Client Bootstrapping Policies
 - D. Group Policy objects (GPOs) that define the Link-Layer Topology Discovery (LLTD) settings

Correct Answer: B

Section: (none)

Explanation

Explanation/Reference:

ok.

QUESTION 3

Click the Case Study button to review the scenario.

You plan to deploy Exchange Server 2010 Unified Messaging (UM).

You need to recommend a solution for the planned deployment that meets the company's availability requirements and supports the business goals.

What should you include in the recommendation?

Case Study Title (Case Study):

Litware, Inc.

Company Overview

Litware, Inc. is a global publishing company that has 1,000 employees.

Physical Locations

The company has a main office and a branch office. The main office is located in New York. The branch office is located in London. Each office has 500 users. Users regularly travel between the London office and the New York office. Users occasionally work from home.

Existing Environment

Network Infrastructure

The network contains an Active Directory domain named litwareinc.com. Litwareinc.com contains the servers configured as shown in the following table.

Server role	Server configuration
Microsoft Exchange Server 2010	<ul style="list-style-type: none">Two servers that run the Mailbox server role, the Hub Transport server role, and the Client Access server role in the London officeTwo servers that run the Mailbox server role, the Hub Transport server role, and the Client Access server role in the New York officeA single database availability group (DAG) that contains two mailbox databasesAll DAG members maintain a copy of each database
Lync Server 2010	<ul style="list-style-type: none">A Standard Edition server in the London officeA Standard Edition server in the New York officeA Mediation Server and a PSTN gateway in the London officeA Mediation Server and a PSTN gateway in the New York officeA consolidated Edge Server in the London officeA consolidated Edge Server in the New York officeAn Archiving Server that runs Microsoft SQL Server 2008 in the London office
Microsoft Forefront Threat Management Gateway (TMG)	<ul style="list-style-type: none">A two-node reverse proxy and a caching array that has Network Load Balancing (NLB) in the London officeA two-node reverse proxy and a caching array that has Network Load Balancing (NLB) in the New York office

All client computers run Windows XP Professional Service Pack 3 (SP3) and Microsoft Office Outlook 2007. Client computers run either Microsoft Office Communicator 2007 R2 or Microsoft Lync 2010.

Requirements

Business Goals

Litware has the following business goals:

- Minimize software costs.
- Minimize hardware costs.
- Minimize administrative effort.

Planned Changes

Litware plans to implement the following changes:

- Deploy Lync 2010 to all client computers.
- Implement Web conferencing and Web conferencing federation.
- Deploy Exchange Server 2010 Unified Messaging (UM) and integrate

Technical Requirements

Litware must meet the following technical requirements:

- Remote users must have access to IM, Web conferencing, and A/V conferencing.

- Users who use Office Communicator 2007 R2 must receive a message that contains a download link for Lync 2010.
- Client computers that run Office Communicator 2007 R2 must be prevented from connecting to the Lync infrastructure.

Bandwidth Management Requirements

Litware must meet the following requirements for managing bandwidth:

- Limit the total amount of bandwidth consumed on the network.
- Ensure that the amount of bandwidth available provides good call quality.
- Provide reporting on calls that could not be completed due to insufficient bandwidth.
- Reroute calls to alternate paths when there is an insufficient amount of bandwidth available to make a call.

Conferencing Requirements

The conferencing features required by the Active Directory groups are listed in the following table.

Group	Video	Audio	Data collaboration	Application sharing	Recording	Anonymous participants
Managers	X	X	X	X	X	X
Team leaders	X	X	X	X		
Sales	X	X	X			X
Accounts		X	X	X		
Call center		X				
Main office users		X	X			

*X indicates a required feature.

Availability Requirements

Litware must meet the following availability requirements:

- Ensure that remote users can join Web conferences if a single Edge Server fails.
- Ensure that Lync clients can retrieve voice mails if a single Exchange server fails.
- Ensure that internal users can sign in to Lync 2010 if a Lync Server 2010 Front End Server fails.
- Ensure that archived instant messages can be recovered if a database is corrupted or if storage fails.
- Ensure that the Central Management Store (CMS) is accessible if a single server fails or if the CMS is corrupted.

Compliance Requirements

Litware must meet the following compliance requirements:

- All IM conversations must be archived.
- Call detail records must be captured for all internal and all external calls.

- Deploy the Unified Messaging server role to a new Exchange organization.
- Deploy the Unified Messaging server role by using cross-premise mode.
- Deploy the Unified Messaging server role on each Exchange server.
- Add two new Exchange servers that have the Unified Messaging server role deployed.

Correct Answer: C

Section: (none)

Explanation

Explanation/Reference:

this.

QUESTION 4

Click the Case Study button to review the scenario.

You plan to deploy an additional Edge Server.

You need to recommend changes to the Lync Server infrastructure that meet the company's availability requirements for remote users.

What should you include in the recommendation?

Case Study Title (Case Study):
Litware, Inc.

Company Overview

Litware, Inc. is a global publishing company that has 1,000 employees.

Physical Locations

The company has a main office and a branch office. The main office is located in New York. The branch office is located in London. Each office has 500 users. Users regularly travel between the London office and the New York office. Users occasionally work from home.

Existing Environment

Network Infrastructure

The network contains an Active Directory domain named litwareinc.com. Litwareinc.com contains the servers configured as shown in the following table.

Server role	Server configuration
Microsoft Exchange Server 2010	<ul style="list-style-type: none">Two servers that run the Mailbox server role, the Hub Transport server role, and the Client Access server role in the London officeTwo servers that run the Mailbox server role, the Hub Transport server role, and the Client Access server role in the New York officeA single database availability group (DAG) that contains two mailbox databasesAll DAG members maintain a copy of each database
Lync Server 2010	<ul style="list-style-type: none">A Standard Edition server in the London officeA Standard Edition server in the New York officeA Mediation Server and a PSTN gateway in the London officeA Mediation Server and a PSTN gateway in the New York officeA consolidated Edge Server in the London officeA consolidated Edge Server in the New York officeAn Archiving Server that runs Microsoft SQL Server 2008 in the London office
Microsoft Forefront Threat Management Gateway (TMG)	<ul style="list-style-type: none">A two-node reverse proxy and a caching array that has Network Load Balancing (NLB) in the London officeA two-node reverse proxy and a caching array that has Network Load Balancing (NLB) in the New York office

All client computers run Windows XP Professional Service Pack 3 (SP3) and Microsoft Office Outlook 2007. Client computers run either Microsoft Office Communicator 2007 R2 or Microsoft Lync 2010.

Requirements

Business Goals

Litware has the following business goals:

- Minimize software costs.
- Minimize hardware costs.
- Minimize administrative effort.

Planned Changes

Litware plans to implement the following changes:

- Deploy Lync 2010 to all client computers.
- Implement Web conferencing and Web conferencing federation.
- Deploy Exchange Server 2010 Unified Messaging (UM) and integrate

Technical Requirements

Litware must meet the following technical requirements:

- Remote users must have access to IM, Web conferencing, and A/V conferencing.
- Users who use Office Communicator 2007 R2 must receive a message that contains a download link for Lync 2010.
- Client computers that run Office Communicator 2007 R2 must be prevented from connecting to the Lync infrastructure.

Bandwidth Management Requirements

Litware must meet the following requirements for managing bandwidth:

- Limit the total amount of bandwidth consumed on the network.
- Ensure that the amount of bandwidth available provides good call quality.
- Provide reporting on calls that could not be completed due to insufficient bandwidth.
- Reroute calls to alternate paths when there is an insufficient amount of bandwidth available to make a call.

Conferencing Requirements

The conferencing features required by the Active Directory groups are listed in the following table.

Group	Video	Audio	Data collaboration	Application sharing	Recording	Anonymous participants
Managers	X	X	X	X	X	X
Team leaders	X	X	X	X		
Sales	X	X	X			X
Accounts		X	X	X		
Call center		X				
Main office users		X	X			

*X indicates a required feature.

Availability Requirements

Litware must meet the following availability requirements:

- Ensure that remote users can join Web conferences if a single Edge Server fails.
- Ensure that Lync clients can retrieve voice mails if a single Exchange server fails.
- Ensure that internal users can sign in to Lync 2010 if a Lync Server 2010 Front End Server fails.
- Ensure that archived instant messages can be recovered if a database is corrupted or if storage fails.

- Ensure that the Central Management Store (CMS) is accessible if a single server fails or if the CMS is corrupted.

Compliance Requirements

Litware must meet the following compliance requirements:

- All IM conversations must be archived.
- Call detail records must be captured for all internal and all external calls.

- A. hardware load balancing
- B. an additional Mediation Server and a PSTN gateway in each site
- C. a Director pool that contains two Directors
- D. DNS load balancing

Correct Answer: A

Section: (none)

Explanation

Explanation/Reference:

ok. this.

""Client computers run either Microsoft Office Communicator 2007 R2 or Microsoft Lync 2010.""

Choice between DNSLB or HLB depends on legacy clients: rule of thumb - **Lync only = DNSLB, Legacy = HLB**

If you are not using NAT then you can use HLB. NAT is mandatory for DNS Load Balancing. So, if you are not using NAT, you cannot use DNS LB.

<http://technet.microsoft.com/en-us/library/gg425716.aspx>

QUESTION 5

Click the Case Study button to review the scenario.

You need to create a disaster recovery plan for the CMS that meets the company's availability requirements.

What should you include in the plan?

Case Study Title (Case Study):

Litware, Inc.

Company Overview

Litware, Inc. is a global publishing company that has 1,000 employees.

Physical Locations

The company has a main office and a branch office. The main office is located in New York. The branch office is located in London. Each office has 500 users. Users regularly travel between the London office and the New York office. Users occasionally work from home.

Existing Environment

Network Infrastructure

The network contains an Active Directory domain named litwareinc.com. Litwareinc.com contains the servers configured as shown in the following table.

Server role	Server configuration
-------------	----------------------

Microsoft Exchange Server 2010	<ul style="list-style-type: none"> ▪ Two servers that run the Mailbox server role, the Hub Transport server role, and the Client Access server role in the London office ▪ Two servers that run the Mailbox server role, the Hub Transport server role, and the Client Access server role in the New York office ▪ A single database availability group (DAG) that contains two mailbox databases ▪ All DAG members maintain a copy of each database
Lync Server 2010	<ul style="list-style-type: none"> ▪ A Standard Edition server in the London office ▪ A Standard Edition server in the New York office ▪ A Mediation Server and a PSTN gateway in the London office ▪ A Mediation Server and a PSTN gateway in the New York office ▪ A consolidated Edge Server in the London office ▪ A consolidated Edge Server in the New York office ▪ An Archiving Server that runs Microsoft SQL Server 2008 in the London office
Microsoft Forefront Threat Management Gateway (TMG)	<ul style="list-style-type: none"> ▪ A two-node reverse proxy and a caching array that has Network Load Balancing (NLB) in the London office ▪ A two-node reverse proxy and a caching array that has Network Load Balancing (NLB) in the New York office

All client computers run Windows XP Professional Service Pack 3 (SP3) and Microsoft Office Outlook 2007. Client computers run either Microsoft Office Communicator 2007 R2 or Microsoft Lync 2010.

Requirements

Business Goals

Litware has the following business goals:

- Minimize software costs.
- Minimize hardware costs.
- Minimize administrative effort.

Planned Changes

Litware plans to implement the following changes:

- Deploy Lync 2010 to all client computers.
- Implement Web conferencing and Web conferencing federation.
- Deploy Exchange Server 2010 Unified Messaging (UM) and integrate

Technical Requirements

Litware must meet the following technical requirements:

- Remote users must have access to IM, Web conferencing, and A/V conferencing.
- Users who use Office Communicator 2007 R2 must receive a message that contains a download link for Lync 2010.
- Client computers that run Office Communicator 2007 R2 must be prevented from connecting to the Lync infrastructure.

Bandwidth Management Requirements

Litware must meet the following requirements for managing bandwidth:

- Limit the total amount of bandwidth consumed on the network.
- Ensure that the amount of bandwidth available provides good call quality.
- Provide reporting on calls that could not be completed due to insufficient bandwidth.
- Reroute calls to alternate paths when there is an insufficient amount of bandwidth available to make a call.

Conferencing Requirements

The conferencing features required by the Active Directory groups are listed in the following table.

Group	Video	Audio	Data collaboration	Application sharing	Recording	Anonymous participants
Managers	X	X	X	X	X	X
Team leaders	X	X	X	X		
Sales	X	X	X			X
Accounts		X	X	X		
Call center		X				
Main office users		X	X			

*X indicates a required feature.

Availability Requirements

Litware must meet the following availability requirements:

- Ensure that remote users can join Web conferences if a single Edge Server fails.
- Ensure that Lync clients can retrieve voice mails if a single Exchange server fails.
- Ensure that internal users can sign in to Lync 2010 if a Lync Server 2010 Front End Server fails.
- Ensure that archived instant messages can be recovered if a database is corrupted or if storage fails.
- Ensure that the Central Management Store (CMS) is accessible if a single server fails or if the CMS is corrupted.

Compliance Requirements

Litware must meet the following compliance requirements:

- All IM conversations must be archived.
- Call detail records must be captured for all internal and all external calls.

- A. the export-CsConfiguration and import-CsConfiguration cmdlets
- B. the Dbimpexp tool
- C. the export-CsLisConfiguration and import-CsLisConfiguration cmdlets
- D. the DbAnalyze tool

Correct Answer: A

Section: (none)

Explanation

Explanation/Reference:

ok.

QUESTION 6

Click the Case Study button to review the scenario.

You need to design a recovery plan for the archived IM messages that meets the company's availability requirements.

What should you include in the design?

Case Study Title (Case Study):

Litware, Inc.

Company Overview

Litware, Inc. is a global publishing company that has 1,000 employees.

Physical Locations

The company has a main office and a branch office. The main office is located in New York. The branch office is located in London. Each office has 500 users. Users regularly travel between the London office and the New York office. Users occasionally work from home.

Existing Environment

Network Infrastructure

The network contains an Active Directory domain named litwareinc.com. Litwareinc.com contains the servers configured as shown in the following table.

Server role	Server configuration
Microsoft Exchange Server 2010	<ul style="list-style-type: none">Two servers that run the Mailbox server role, the Hub Transport server role, and the Client Access server role in the London officeTwo servers that run the Mailbox server role, the Hub Transport server role, and the Client Access server role in the New York officeA single database availability group (DAG) that contains two mailbox databasesAll DAG members maintain a copy of each database
Lync Server 2010	<ul style="list-style-type: none">A Standard Edition server in the London officeA Standard Edition server in the New York officeA Mediation Server and a PSTN gateway in the London officeA Mediation Server and a PSTN gateway in the New York officeA consolidated Edge Server in the London officeA consolidated Edge Server in the New York officeAn Archiving Server that runs Microsoft SQL Server 2008 in the London office
Microsoft Forefront Threat Management Gateway (TMG)	<ul style="list-style-type: none">A two-node reverse proxy and a caching array that has Network Load Balancing (NLB) in the London officeA two-node reverse proxy and a caching array that has Network Load Balancing (NLB) in the New York office

All client computers run Windows XP Professional Service Pack 3 (SP3) and Microsoft Office Outlook 2007. Client computers run either Microsoft Office Communicator 2007 R2 or Microsoft Lync 2010.

Requirements

Business Goals

Litware has the following business goals:

- Minimize software costs.
- Minimize hardware costs.
- Minimize administrative effort.

Planned Changes

Litware plans to implement the following changes:

- Deploy Lync 2010 to all client computers.
- Implement Web conferencing and Web conferencing federation.
- Deploy Exchange Server 2010 Unified Messaging (UM) and integrate

Technical Requirements

Litware must meet the following technical requirements:

- Remote users must have access to IM, Web conferencing, and A/V conferencing.
- Users who use Office Communicator 2007 R2 must receive a message that contains a download link for Lync 2010.
- Client computers that run Office Communicator 2007 R2 must be prevented from connecting to the Lync infrastructure.

Bandwidth Management Requirements

Litware must meet the following requirements for managing bandwidth:

- Limit the total amount of bandwidth consumed on the network.
- Ensure that the amount of bandwidth available provides good call quality.
- Provide reporting on calls that could not be completed due to insufficient bandwidth.
- Reroute calls to alternate paths when there is an insufficient amount of bandwidth available to make a call.

Conferencing Requirements

The conferencing features required by the Active Directory groups are listed in the following table.

Group	Video	Audio	Data collaboration	Application sharing	Recording	Anonymous participants
Managers	X	X	X	X	X	X
Team leaders	X	X	X	X		
Sales	X	X	X			X
Accounts		X	X	X		
Call center		X				
Main office users		X	X			

*X indicates a required feature.

Availability Requirements

Litware must meet the following availability requirements:

- Ensure that remote users can join Web conferences if a single Edge Server fails.
- Ensure that Lync clients can retrieve voice mails if a single Exchange server fails.
- Ensure that internal users can sign in to Lync 2010 if a Lync Server 2010 Front End Server fails.
- Ensure that archived instant messages can be recovered if a database is corrupted or if storage fails.
- Ensure that the Central Management Store (CMS) is accessible if a single server fails or if the CMS is corrupted.

Compliance Requirements

Litware must meet the following compliance requirements:

- All IM conversations must be archived.
- Call detail records must be captured for all internal and all external calls.

- A. an XDS-master folder
- B. a LcsLog database
- C. a DataConf folder and a MeetingConf folder
- D. an XDS database

Correct Answer: B

Section: (none)

Explanation

Explanation/Reference:

a LcsLog database or a DataConf folder and a MeetingConf folder.

QUESTION 7

Click the Case Study button to review the scenario.

You need to recommend changes to the Lync infrastructure to ensure that internal users can sign in to Lync 2010 if a Lync Server 2010 Front End Server fails.

Which two actions should include in the recommendation? (Each correct answer presents part of the solution. Choose two.)

Case Study Title (Case Study):

Litware, Inc.

Company Overview

Litware, Inc. is a global publishing company that has 1,000 employees.

Physical Locations

The company has a main office and a branch office. The main office is located in New York. The branch office is located in London. Each office has 500 users. Users regularly travel between the London office and the New York office. Users occasionally work from home.

Existing Environment**Network Infrastructure**

The network contains an Active Directory domain named litwareinc.com. Litwareinc.com contains the servers configured as shown in the following table.

Server role	Server configuration
Microsoft Exchange Server 2010	<ul style="list-style-type: none">Two servers that run the Mailbox server role, the Hub Transport server role, and the Client Access server role in the London officeTwo servers that run the Mailbox server role, the Hub Transport server role, and the Client Access server role in the New York officeA single database availability group (DAG) that contains two mailbox databasesAll DAG members maintain a copy of each database
Lync Server 2010	<ul style="list-style-type: none">A Standard Edition server in the London officeA Standard Edition server in the New York officeA Mediation Server and a PSTN gateway in the London officeA Mediation Server and a PSTN gateway in the New York officeA consolidated Edge Server in the London officeA consolidated Edge Server in the New York officeAn Archiving Server that runs Microsoft SQL Server 2008 in the London office
Microsoft Forefront Threat Management Gateway (TMG)	<ul style="list-style-type: none">A two-node reverse proxy and a caching array that has Network Load Balancing (NLB) in the London officeA two-node reverse proxy and a caching array that has Network Load Balancing (NLB) in the New York office

All client computers run Windows XP Professional Service Pack 3 (SP3) and Microsoft Office Outlook 2007. Client computers run either Microsoft Office Communicator 2007 R2 or Microsoft Lync 2010.

Requirements

Business Goals

Litware has the following business goals:

- Minimize software costs.
- Minimize hardware costs.
- Minimize administrative effort.

Planned Changes

Litware plans to implement the following changes:

- Deploy Lync 2010 to all client computers.
- Implement Web conferencing and Web conferencing federation.
- Deploy Exchange Server 2010 Unified Messaging (UM) and integrate

Technical Requirements

Litware must meet the following technical requirements:

- Remote users must have access to IM, Web conferencing, and A/V conferencing.
- Users who use Office Communicator 2007 R2 must receive a message that contains a download link for Lync 2010.
- Client computers that run Office Communicator 2007 R2 must be prevented from connecting to the Lync infrastructure.

Bandwidth Management Requirements

Litware must meet the following requirements for managing bandwidth:

- Limit the total amount of bandwidth consumed on the network.
- Ensure that the amount of bandwidth available provides good call quality.
- Provide reporting on calls that could not be completed due to insufficient bandwidth.
- Reroute calls to alternate paths when there is an insufficient amount of bandwidth available to make a call.

Conferencing Requirements

The conferencing features required by the Active Directory groups are listed in the following table.

Group	Video	Audio	Data collaboration	Application sharing	Recording	Anonymous participants
Managers	X	X	X	X	X	X
Team leaders	X	X	X	X		
Sales	X	X	X			X
Accounts		X	X	X		
Call center		X				
Main office users		X	X			

*X indicates a required feature.

Availability Requirements

Litware must meet the following availability requirements:

- Ensure that remote users can join Web conferences if a single Edge Server fails.
- Ensure that Lync clients can retrieve voice mails if a single Exchange server fails.
- Ensure that internal users can sign in to Lync 2010 if a Lync Server 2010 Front End Server fails.
- Ensure that archived instant messages can be recovered if a database is corrupted or if storage fails.

- Ensure that the Central Management Store (CMS) is accessible if a single server fails or if the CMS is corrupted.

Compliance Requirements

Litware must meet the following compliance requirements:

- All IM conversations must be archived.
 - Call detail records must be captured for all internal and all external calls.
- A. For each Front End Server, configure a Service Location (SRV) record that uses an Alias (CNAME) record.
B. Deploy a Director pool.
C. For each Front End Server, configure a Service Location (SRV) record that uses a Host (A) record.
D. Associate a backup registrar with each Front End Server.

Correct Answer: CD

Section: (none)

Explanation

Explanation/Reference:

ok.

QUESTION 8

Click the Case Study button to review the scenario.

You need to recommend changes to the DNS zone that meet the company's compliance requirements.

What records should you include in the recommendation?

Case Study Title (Case Study):

Litware, Inc.

Company Overview

Litware, Inc. is a global publishing company that has 1,000 employees.

Physical Locations

The company has a main office and a branch office. The main office is located in New York. The branch office is located in London. Each office has 500 users. Users regularly travel between the London office and the New York office. Users occasionally work from home.

Existing Environment

Network Infrastructure

The network contains an Active Directory domain named litwareinc.com. Litwareinc.com contains the servers configured as shown in the following table.

Server role	Server configuration
Microsoft Exchange Server 2010	<ul style="list-style-type: none">▪ Two servers that run the Mailbox server role, the Hub Transport server role, and the Client Access server role in the London office▪ Two servers that run the Mailbox server role, the Hub Transport server role, and the Client Access server role in the New York office▪ A single database availability group (DAG) that contains two mailbox databases▪ All DAG members maintain a copy of each database

Lync Server 2010	<ul style="list-style-type: none"> ▪ A Standard Edition server in the London office ▪ A Standard Edition server in the New York office ▪ A Mediation Server and a PSTN gateway in the London office ▪ A Mediation Server and a PSTN gateway in the New York office ▪ A consolidated Edge Server in the London office ▪ A consolidated Edge Server in the New York office ▪ An Archiving Server that runs Microsoft SQL Server 2008 in the London office
Microsoft Forefront Threat Management Gateway (TMG)	<ul style="list-style-type: none"> ▪ A two-node reverse proxy and a caching array that has Network Load Balancing (NLB) in the London office ▪ A two-node reverse proxy and a caching array that has Network Load Balancing (NLB) in the New York office

All client computers run Windows XP Professional Service Pack 3 (SP3) and Microsoft Office Outlook 2007. Client computers run either Microsoft Office Communicator 2007 R2 or Microsoft Lync 2010.

Requirements

Business Goals

Litware has the following business goals:

- Minimize software costs.
- Minimize hardware costs.
- Minimize administrative effort.

Planned Changes

Litware plans to implement the following changes:

- Deploy Lync 2010 to all client computers.
- Implement Web conferencing and Web conferencing federation.
- Deploy Exchange Server 2010 Unified Messaging (UM) and integrate

Technical Requirements

Litware must meet the following technical requirements:

- Remote users must have access to IM, Web conferencing, and A/V conferencing.
- Users who use Office Communicator 2007 R2 must receive a message that contains a download link for Lync 2010.
- Client computers that run Office Communicator 2007 R2 must be prevented from connecting to the Lync infrastructure.

Bandwidth Management Requirements

Litware must meet the following requirements for managing bandwidth:

- Limit the total amount of bandwidth consumed on the network.
- Ensure that the amount of bandwidth available provides good call quality.
- Provide reporting on calls that could not be completed due to insufficient bandwidth.
- Reroute calls to alternate paths when there is an insufficient amount of bandwidth available to make a call.

Conferencing Requirements

The conferencing features required by the Active Directory groups are listed in the following table.

Group	Video	Audio	Data collaboration	Application sharing	Recording	Anonymous participants
Managers	X	X	X	X	X	X
Team leaders	X	X	X	X		

Sales	X	X	X			X
Accounts		X	X	X		
Call center		X				
Main office users		X	X			

*X indicates a required feature.

Availability Requirements

Litware must meet the following availability requirements:

- Ensure that remote users can join Web conferences if a single Edge Server fails.
- Ensure that Lync clients can retrieve voice mails if a single Exchange server fails.
- Ensure that internal users can sign in to Lync 2010 if a Lync Server 2010 Front End Server fails.
- Ensure that archived instant messages can be recovered if a database is corrupted or if storage fails.
- Ensure that the Central Management Store (CMS) is accessible if a single server fails or if the CMS is corrupted.

Compliance Requirements

Litware must meet the following compliance requirements:

- All IM conversations must be archived.
- Call detail records must be captured for all internal and all external calls.

- A. _sipfederationsssl.tcplitwareinc.com_.com and _tls._sip.litwareinc.com
- B. _sipfederationtls._udp.litwareinc.com and _sip.litwareinc.com
- C. _sipfederationsssl._tcp.litwareinc.com and _sip._ssl.litwareinc.com
- D. _sipfederationtls._tcp.litwareinc.com and _sip._tls.litwareinc.com

Correct Answer: D

Section: (none)

Explanation

Explanation/Reference:

ok. this.

QUESTION 9

Click the Case Study button to review the scenario.

You are evaluating the deployment of Call Admission Control.

Which bandwidth management requirement will NOT be met by implementing Call Admission Control?

Case Study Title (Case Study):

Litware, Inc.

Company Overview

Litware, Inc. is a global publishing company that has 1,000 employees.

Physical Locations

The company has a main office and a branch office. The main office is located in New York. The branch office is located in London. Each office has 500 users. Users regularly travel between the London office and the New York office. Users occasionally work from home.

Existing Environment

Network Infrastructure

The network contains an Active Directory domain named litwareinc.com. Litwareinc.com contains the servers configured as shown in the following table.

Server role	Server configuration
Microsoft Exchange Server 2010	<ul style="list-style-type: none">Two servers that run the Mailbox server role, the Hub Transport server role, and the Client Access server role in the London officeTwo servers that run the Mailbox server role, the Hub Transport server role, and the Client Access server role in the New York officeA single database availability group (DAG) that contains two mailbox databasesAll DAG members maintain a copy of each database
Lync Server 2010	<ul style="list-style-type: none">A Standard Edition server in the London officeA Standard Edition server in the New York officeA Mediation Server and a PSTN gateway in the London officeA Mediation Server and a PSTN gateway in the New York officeA consolidated Edge Server in the London officeA consolidated Edge Server in the New York officeAn Archiving Server that runs Microsoft SQL Server 2008 in the London office
Microsoft Forefront Threat Management Gateway (TMG)	<ul style="list-style-type: none">A two-node reverse proxy and a caching array that has Network Load Balancing (NLB) in the London officeA two-node reverse proxy and a caching array that has Network Load Balancing (NLB) in the New York office

All client computers run Windows XP Professional Service Pack 3 (SP3) and Microsoft Office Outlook 2007. Client computers run either Microsoft Office Communicator 2007 R2 or Microsoft Lync 2010.

Requirements

Business Goals

Litware has the following business goals:

- Minimize software costs.
- Minimize hardware costs.
- Minimize administrative effort.

Planned Changes

Litware plans to implement the following changes:

- Deploy Lync 2010 to all client computers.
- Implement Web conferencing and Web conferencing federation.
- Deploy Exchange Server 2010 Unified Messaging (UM) and integrate

Technical Requirements

Litware must meet the following technical requirements:

- Remote users must have access to IM, Web conferencing, and A/V conferencing.
- Users who use Office Communicator 2007 R2 must receive a message that contains a download link for Lync 2010.
- Client computers that run Office Communicator 2007 R2 must be prevented from connecting to the Lync infrastructure.

Bandwidth Management Requirements

Litware must meet the following requirements for managing bandwidth:

- Limit the total amount of bandwidth consumed on the network.
- Ensure that the amount of bandwidth available provides good call quality.
- Provide reporting on calls that could not be completed due to insufficient bandwidth.
- Reroute calls to alternate paths when there is an insufficient amount of bandwidth available to make a call.

Conferencing Requirements

The conferencing features required by the Active Directory groups are listed in the following table.

Group	Video	Audio	Data collaboration	Application sharing	Recording	Anonymous participants
Managers	X	X	X	X	X	X
Team leaders	X	X	X	X		
Sales	X	X	X			X
Accounts		X	X	X		
Call center		X				
Main office users		X	X			

*X indicates a required feature.

Availability Requirements

Litware must meet the following availability requirements:

- Ensure that remote users can join Web conferences if a single Edge Server fails.
- Ensure that Lync clients can retrieve voice mails if a single Exchange server fails.
- Ensure that internal users can sign in to Lync 2010 if a Lync Server 2010 Front End Server fails.
- Ensure that archived instant messages can be recovered if a database is corrupted or if storage fails.
- Ensure that the Central Management Store (CMS) is accessible if a single server fails or if the CMS is corrupted.

Compliance Requirements

Litware must meet the following compliance requirements:

- All IM conversations must be archived.
- Call detail records must be captured for all internal and all external calls.

- A. Reroute calls to alternate paths when there is an insufficient amount of bandwidth available to make a call.
- B. Limit the total amount of bandwidth consumed on the network.
- C. Provide reporting on calls that could not be completed due to insufficient bandwidth.
- D. Ensure that the amount of bandwidth available provides good call quality.

Correct Answer: B

Section: (none)

Explanation

Explanation/Reference:

chosed this.

total amount of BW = data + voice + video. CAC doesn't restrict data, thereby doesn't restrict total.

QUESTION 10

lick the Case Study button to review the scenario.

You need to recommend a solution to ensure that when users from the New York office travel to the London office, and they dial 911, the call is routed to the local emergency services operator.

What should you include in the recommendation?

Case Study Title (Case Study):
Litware, Inc.

Company Overview

Litware, Inc. is a global publishing company that has 1,000 employees.

Physical Locations

The company has a main office and a branch office. The main office is located in New York. The branch office is located in London. Each office has 500 users. Users regularly travel between the London office and the New York office. Users occasionally work from home.

Existing Environment

Network Infrastructure

The network contains an Active Directory domain named litwareinc.com. Litwareinc.com contains the servers configured as shown in the following table.

Server role	Server configuration
Microsoft Exchange Server 2010	<ul style="list-style-type: none">Two servers that run the Mailbox server role, the Hub Transport server role, and the Client Access server role in the London officeTwo servers that run the Mailbox server role, the Hub Transport server role, and the Client Access server role in the New York officeA single database availability group (DAG) that contains two mailbox databasesAll DAG members maintain a copy of each database
Lync Server 2010	<ul style="list-style-type: none">A Standard Edition server in the London officeA Standard Edition server in the New York officeA Mediation Server and a PSTN gateway in the London officeA Mediation Server and a PSTN gateway in the New York officeA consolidated Edge Server in the London officeA consolidated Edge Server in the New York officeAn Archiving Server that runs Microsoft SQL Server 2008 in the London office
Microsoft Forefront Threat Management Gateway (TMG)	<ul style="list-style-type: none">A two-node reverse proxy and a caching array that has Network Load Balancing (NLB) in the London officeA two-node reverse proxy and a caching array that has Network Load Balancing (NLB) in the New York office

All client computers run Windows XP Professional Service Pack 3 (SP3) and Microsoft Office Outlook 2007. Client computers run either Microsoft Office Communicator 2007 R2 or Microsoft Lync 2010.

Requirements

Business Goals

Litware has the following business goals:

- Minimize software costs.

- Minimize hardware costs.
- Minimize administrative effort.

Planned Changes

Litware plans to implement the following changes:

- Deploy Lync 2010 to all client computers.
- Implement Web conferencing and Web conferencing federation.
- Deploy Exchange Server 2010 Unified Messaging (UM) and integrate

Technical Requirements

Litware must meet the following technical requirements:

- Remote users must have access to IM, Web conferencing, and A/V conferencing.
- Users who use Office Communicator 2007 R2 must receive a message that contains a download link for Lync 2010.
- Client computers that run Office Communicator 2007 R2 must be prevented from connecting to the Lync infrastructure.

Bandwidth Management Requirements

Litware must meet the following requirements for managing bandwidth:

- Limit the total amount of bandwidth consumed on the network.
- Ensure that the amount of bandwidth available provides good call quality.
- Provide reporting on calls that could not be completed due to insufficient bandwidth.
- Reroute calls to alternate paths when there is an insufficient amount of bandwidth available to make a call.

Conferencing Requirements

The conferencing features required by the Active Directory groups are listed in the following table.

Group	Video	Audio	Data collaboration	Application sharing	Recording	Anonymous participants
Managers	X	X	X	X	X	X
Team leaders	X	X	X	X		
Sales	X	X	X			X
Accounts		X	X	X		
Call center		X				
Main office users		X	X			

*X indicates a required feature.

Availability Requirements

Litware must meet the following availability requirements:

- Ensure that remote users can join Web conferences if a single Edge Server fails.
- Ensure that Lync clients can retrieve voice mails if a single Exchange server fails.
- Ensure that internal users can sign in to Lync 2010 if a Lync Server 2010 Front End Server fails.
- Ensure that archived instant messages can be recovered if a database is corrupted or if storage fails.
- Ensure that the Central Management Store (CMS) is accessible if a single server fails or if the CMS is corrupted.

Compliance Requirements

Litware must meet the following compliance requirements:

- All IM conversations must be archived.

- Call detail records must be captured for all internal and all external calls.
- A. Modify the Dial Plan settings for the London office.
- B. Implement Site Location Policies.
- C. Implement User Location Policies.
- D. Modify the Dial Plan settings for the New York office.

Correct Answer: B

Section: (none)

Explanation

Explanation/Reference:

ok.

QUESTION 11

Click the Case Study button to review the scenario.

You need to recommend a solution to control conferencing. The solution must meet the company's conferencing requirements.

What should you recommend?

Case Study Title (Case Study):

Litware, Inc.



<http://www.gratisexam.com/>

Company Overview

Litware, Inc. is a global publishing company that has 1,000 employees.

Physical Locations

The company has a main office and a branch office. The main office is located in New York. The branch office is located in London. Each office has 500 users. Users regularly travel between the London office and the New York office. Users occasionally work from home.

Existing Environment

Network Infrastructure

The network contains an Active Directory domain named litwareinc.com. Litwareinc.com contains the servers configured as shown in the following table.

Server role	Server configuration
Microsoft Exchange Server 2010	<ul style="list-style-type: none">▪ Two servers that run the Mailbox server role, the Hub Transport server role, and the Client Access server role in the London office▪ Two servers that run the Mailbox server role, the Hub Transport server role, and the Client Access server role in the New York office▪ A single database availability group (DAG) that contains two mailbox databases

	<ul style="list-style-type: none"> ▪ All DAG members maintain a copy of each database
Lync Server 2010	<ul style="list-style-type: none"> ▪ A Standard Edition server in the London office ▪ A Standard Edition server in the New York office ▪ A Mediation Server and a PSTN gateway in the London office ▪ A Mediation Server and a PSTN gateway in the New York office ▪ A consolidated Edge Server in the London office ▪ A consolidated Edge Server in the New York office ▪ An Archiving Server that runs Microsoft SQL Server 2008 in the London office
Microsoft Forefront Threat Management Gateway (TMG)	<ul style="list-style-type: none"> ▪ A two-node reverse proxy and a caching array that has Network Load Balancing (NLB) in the London office ▪ A two-node reverse proxy and a caching array that has Network Load Balancing (NLB) in the New York office

All client computers run Windows XP Professional Service Pack 3 (SP3) and Microsoft Office Outlook 2007. Client computers run either Microsoft Office Communicator 2007 R2 or Microsoft Lync 2010.

Requirements

Business Goals

Litware has the following business goals:

- Minimize software costs.
- Minimize hardware costs.
- Minimize administrative effort.

Planned Changes

Litware plans to implement the following changes:

- Deploy Lync 2010 to all client computers.
- Implement Web conferencing and Web conferencing federation.
- Deploy Exchange Server 2010 Unified Messaging (UM) and integrate

Technical Requirements

Litware must meet the following technical requirements:

- Remote users must have access to IM, Web conferencing, and A/V conferencing.
- Users who use Office Communicator 2007 R2 must receive a message that contains a download link for Lync 2010.
- Client computers that run Office Communicator 2007 R2 must be prevented from connecting to the Lync infrastructure.

Bandwidth Management Requirements

Litware must meet the following requirements for managing bandwidth:

- Limit the total amount of bandwidth consumed on the network.
- Ensure that the amount of bandwidth available provides good call quality.
- Provide reporting on calls that could not be completed due to insufficient bandwidth.
- Reroute calls to alternate paths when there is an insufficient amount of bandwidth available to make a call.

Conferencing Requirements

The conferencing features required by the Active Directory groups are listed in the following table.

Group	Video	Audio	Data collaboration	Application sharing	Recording	Anonymous participants
Managers	X	X	X	X	X	X

Team leaders	X	X	X	X		
Sales	X	X	X			X
Accounts		X	X	X		
Call center		X				
Main office users		X	X			

*X indicates a required feature.

Availability Requirements

Litware must meet the following availability requirements:

- Ensure that remote users can join Web conferences if a single Edge Server fails.
- Ensure that Lync clients can retrieve voice mails if a single Exchange server fails.
- Ensure that internal users can sign in to Lync 2010 if a Lync Server 2010 Front End Server fails.
- Ensure that archived instant messages can be recovered if a database is corrupted or if storage fails.
- Ensure that the Central Management Store (CMS) is accessible if a single server fails or if the CMS is corrupted.

Compliance Requirements

Litware must meet the following compliance requirements:

- All IM conversations must be archived.
 - Call detail records must be captured for all internal and all external calls.
- A. Enable all of the conferencing features in the Global Conferencing Policy.
Create a User Conferencing Policy for each feature
 - B. Disable all of the conferencing features in the Global Client Policy.
Create a User Client Policy for each feature.
 - C. Enable all of the conferencing features in the Global Client Policy.
Create a User Client Policy for each group.
 - D. Disable all of the conferencing features in the Global Conferencing Policy.
Create a User Conferencing Policy for each group.

Correct Answer: D

Section: (none)

Explanation

Explanation/Reference:

ok.

QUESTION 12

Click the Case Study button to review the scenario.

You need to recommend a certificate for the Lync Server 2010 deployment that meets the company's remote user requirements.

What should you include in the recommendation?

Case Study Title (Case Study):

Litware, Inc.

Company Overview

Litware, Inc. is a global publishing company that has 1,000 employees.

Physical Locations

The company has a main office and a branch office. The main office is located in New York. The branch office is located in London. Each office has 500 users. Users regularly travel between the London office and the New York office. Users occasionally work from home.

Existing Environment

Network Infrastructure

The network contains an Active Directory domain named litwareinc.com. Litwareinc.com contains the servers configured as shown in the following table.

Server role	Server configuration
Microsoft Exchange Server 2010	<ul style="list-style-type: none">Two servers that run the Mailbox server role, the Hub Transport server role, and the Client Access server role in the London officeTwo servers that run the Mailbox server role, the Hub Transport server role, and the Client Access server role in the New York officeA single database availability group (DAG) that contains two mailbox databasesAll DAG members maintain a copy of each database
Lync Server 2010	<ul style="list-style-type: none">A Standard Edition server in the London officeA Standard Edition server in the New York officeA Mediation Server and a PSTN gateway in the London officeA Mediation Server and a PSTN gateway in the New York officeA consolidated Edge Server in the London officeA consolidated Edge Server in the New York officeAn Archiving Server that runs Microsoft SQL Server 2008 in the London office
Microsoft Forefront Threat Management Gateway (TMG)	<ul style="list-style-type: none">A two-node reverse proxy and a caching array that has Network Load Balancing (NLB) in the London officeA two-node reverse proxy and a caching array that has Network Load Balancing (NLB) in the New York office

All client computers run Windows XP Professional Service Pack 3 (SP3) and Microsoft Office Outlook 2007. Client computers run either Microsoft Office Communicator 2007 R2 or Microsoft Lync 2010.

Requirements

Business Goals

Litware has the following business goals:

- Minimize software costs.
- Minimize hardware costs.
- Minimize administrative effort.

Planned Changes

Litware plans to implement the following changes:

- Deploy Lync 2010 to all client computers.
- Implement Web conferencing and Web conferencing federation.
- Deploy Exchange Server 2010 Unified Messaging (UM) and integrate

Technical Requirements

Litware must meet the following technical requirements:

- Remote users must have access to IM, Web conferencing, and A/V conferencing.

- Users who use Office Communicator 2007 R2 must receive a message that contains a download link for Lync 2010.
- Client computers that run Office Communicator 2007 R2 must be prevented from connecting to the Lync infrastructure.

Bandwidth Management Requirements

Litware must meet the following requirements for managing bandwidth:

- Limit the total amount of bandwidth consumed on the network.
- Ensure that the amount of bandwidth available provides good call quality.
- Provide reporting on calls that could not be completed due to insufficient bandwidth.
- Reroute calls to alternate paths when there is an insufficient amount of bandwidth available to make a call.

Conferencing Requirements

The conferencing features required by the Active Directory groups are listed in the following table.

Group	Video	Audio	Data collaboration	Application sharing	Recording	Anonymous participants
Managers	X	X	X	X	X	X
Team leaders	X	X	X	X		
Sales	X	X	X			X
Accounts		X	X	X		
Call center		X				
Main office users		X	X			

*X indicates a required feature.

Availability Requirements

Litware must meet the following availability requirements:

- Ensure that remote users can join Web conferences if a single Edge Server fails.
- Ensure that Lync clients can retrieve voice mails if a single Exchange server fails.
- Ensure that internal users can sign in to Lync 2010 if a Lync Server 2010 Front End Server fails.
- Ensure that archived instant messages can be recovered if a database is corrupted or if storage fails.
- Ensure that the Central Management Store (CMS) is accessible if a single server fails or if the CMS is corrupted.

Compliance Requirements

Litware must meet the following compliance requirements:

- All IM conversations must be archived.
- Call detail records must be captured for all internal and all external calls.

- A. Deploy a certificate from a trusted third-party CA to the external interface of the Edge Server.
- B. Deploy a certificate from the internal CA to the external interface of the Edge Server.
- C. Deploy a certificate from the internal CA to the Mediation Servers.
- D. Deploy a certificate from a trusted third-party CA to the Mediation Servers.

Correct Answer: A

Section: (none)

Explanation

Explanation/Reference:

this.

QUESTION 13

Click the Case Study button to review the scenario.

You need to recommend a solution for the branch office users that meets the company's availability requirements.

What should you include in the recommendation?

Case Study Title (Case Study):
Litware, Inc.

Company Overview

Litware, Inc. is a global publishing company that has 1,000 employees.

Physical Locations

The company has a main office and a branch office. The main office is located in New York. The branch office is located in London. Each office has 500 users. Users regularly travel between the London office and the New York office. Users occasionally work from home.

Existing Environment

Network Infrastructure

The network contains an Active Directory domain named litwareinc.com. Litwareinc.com contains the servers configured as shown in the following table.

Server role	Server configuration
Microsoft Exchange Server 2010	<ul style="list-style-type: none">Two servers that run the Mailbox server role, the Hub Transport server role, and the Client Access server role in the London officeTwo servers that run the Mailbox server role, the Hub Transport server role, and the Client Access server role in the New York officeA single database availability group (DAG) that contains two mailbox databasesAll DAG members maintain a copy of each database
Lync Server 2010	<ul style="list-style-type: none">A Standard Edition server in the London officeA Standard Edition server in the New York officeA Mediation Server and a PSTN gateway in the London officeA Mediation Server and a PSTN gateway in the New York officeA consolidated Edge Server in the London officeA consolidated Edge Server in the New York officeAn Archiving Server that runs Microsoft SQL Server 2008 in the London office
Microsoft Forefront Threat Management Gateway (TMG)	<ul style="list-style-type: none">A two-node reverse proxy and a caching array that has Network Load Balancing (NLB) in the London officeA two-node reverse proxy and a caching array that has Network Load Balancing (NLB) in the New York office

All client computers run Windows XP Professional Service Pack 3 (SP3) and Microsoft Office Outlook 2007. Client computers run either Microsoft Office Communicator 2007 R2 or Microsoft Lync 2010.

Requirements

Business Goals

Litware has the following business goals:

- Minimize software costs.
- Minimize hardware costs.
- Minimize administrative effort.

Planned Changes

Litware plans to implement the following changes:

- Deploy Lync 2010 to all client computers.
- Implement Web conferencing and Web conferencing federation.
- Deploy Exchange Server 2010 Unified Messaging (UM) and integrate

Technical Requirements

Litware must meet the following technical requirements:

- Remote users must have access to IM, Web conferencing, and A/V conferencing.
- Users who use Office Communicator 2007 R2 must receive a message that contains a download link for Lync 2010.
- Client computers that run Office Communicator 2007 R2 must be prevented from connecting to the Lync infrastructure.

Bandwidth Management Requirements

Litware must meet the following requirements for managing bandwidth:

- Limit the total amount of bandwidth consumed on the network.
- Ensure that the amount of bandwidth available provides good call quality.
- Provide reporting on calls that could not be completed due to insufficient bandwidth.
- Reroute calls to alternate paths when there is an insufficient amount of bandwidth available to make a call.

Conferencing Requirements

The conferencing features required by the Active Directory groups are listed in the following table.

Group	Video	Audio	Data collaboration	Application sharing	Recording	Anonymous participants
Managers	X	X	X	X	X	X
Team leaders	X	X	X	X		
Sales	X	X	X			X
Accounts		X	X	X		
Call center		X				
Main office users		X	X			

*X indicates a required feature.

Availability Requirements

Litware must meet the following availability requirements:

- Ensure that remote users can join Web conferences if a single Edge Server fails.
- Ensure that Lync clients can retrieve voice mails if a single Exchange server fails.
- Ensure that internal users can sign in to Lync 2010 if a Lync Server 2010 Front End Server fails.
- Ensure that archived instant messages can be recovered if a database is corrupted or if storage fails.
- Ensure that the Central Management Store (CMS) is accessible if a single server fails or if the CMS is corrupted.

Compliance Requirements

Litware must meet the following compliance requirements:

- All IM conversations must be archived.
- Call detail records must be captured for all internal and all external calls.

- A. a Director
- B. two Location Policies
- C. a Survivable Branch Appliance (SBA)
- D. a primary registrar and a backup registrar

Correct Answer: D

Section: (none)

Explanation

Explanation/Reference:

ok. this.

QUESTION 14

Click the Case Study button to review the scenario.

Your network has Lync Server 2010 deployed. You plan to deploy devices that run Microsoft Lync 2010 Phone Edition.

You need to recommend changes to the network to support the Lync 2010 Phone Edition devices.

What should you include in the recommendation?

Case Study Title (Case Study):

Litware, Inc.

Company Overview

Litware, Inc. is a global publishing company that has 1,000 employees.

Physical Locations

The company has a main office and a branch office. The main office is located in New York. The branch office is located in London. Each office has 500 users. Users regularly travel between the London office and the New York office. Users occasionally work from home.

Existing Environment

Network Infrastructure

The network contains an Active Directory domain named litwareinc.com. Litwareinc.com contains the servers configured as shown in the following table.

Server role	Server configuration
Microsoft Exchange Server 2010	<ul style="list-style-type: none">▪ Two servers that run the Mailbox server role, the Hub Transport server role, and the Client Access server role in the London office▪ Two servers that run the Mailbox server role, the Hub Transport server role, and the Client Access server role in the New York office▪ A single database availability group (DAG) that contains two mailbox databases▪ All DAG members maintain a copy of each database

Lync Server 2010	<ul style="list-style-type: none"> ▪ A Standard Edition server in the London office ▪ A Standard Edition server in the New York office ▪ A Mediation Server and a PSTN gateway in the London office ▪ A Mediation Server and a PSTN gateway in the New York office ▪ A consolidated Edge Server in the London office ▪ A consolidated Edge Server in the New York office ▪ An Archiving Server that runs Microsoft SQL Server 2008 in the London office
Microsoft Forefront Threat Management Gateway (TMG)	<ul style="list-style-type: none"> ▪ A two-node reverse proxy and a caching array that has Network Load Balancing (NLB) in the London office ▪ A two-node reverse proxy and a caching array that has Network Load Balancing (NLB) in the New York office

All client computers run Windows XP Professional Service Pack 3 (SP3) and Microsoft Office Outlook 2007. Client computers run either Microsoft Office Communicator 2007 R2 or Microsoft Lync 2010.

Requirements

Business Goals

Litware has the following business goals:

- Minimize software costs.
- Minimize hardware costs.
- Minimize administrative effort.

Planned Changes

Litware plans to implement the following changes:

- Deploy Lync 2010 to all client computers.
- Implement Web conferencing and Web conferencing federation.
- Deploy Exchange Server 2010 Unified Messaging (UM) and integrate

Technical Requirements

Litware must meet the following technical requirements:

- Remote users must have access to IM, Web conferencing, and A/V conferencing.
- Users who use Office Communicator 2007 R2 must receive a message that contains a download link for Lync 2010.
- Client computers that run Office Communicator 2007 R2 must be prevented from connecting to the Lync infrastructure.

Bandwidth Management Requirements

Litware must meet the following requirements for managing bandwidth:

- Limit the total amount of bandwidth consumed on the network.
- Ensure that the amount of bandwidth available provides good call quality.
- Provide reporting on calls that could not be completed due to insufficient bandwidth.
- Reroute calls to alternate paths when there is an insufficient amount of bandwidth available to make a call.

Conferencing Requirements

The conferencing features required by the Active Directory groups are listed in the following table.

Group	Video	Audio	Data collaboration	Application sharing	Recording	Anonymous participants
Managers	X	X	X	X	X	X
Team leaders	X	X	X	X		

Sales	X	X	X			X
Accounts		X	X	X		
Call center		X				
Main office users		X	X			

*X indicates a required feature.

Availability Requirements

Litware must meet the following availability requirements:

- Ensure that remote users can join Web conferences if a single Edge Server fails.
- Ensure that Lync clients can retrieve voice mails if a single Exchange server fails.
- Ensure that internal users can sign in to Lync 2010 if a Lync Server 2010 Front End Server fails.
- Ensure that archived instant messages can be recovered if a database is corrupted or if storage fails.
- Ensure that the Central Management Store (CMS) is accessible if a single server fails or if the CMS is corrupted.

Compliance Requirements

Litware must meet the following compliance requirements:

- All IM conversations must be archived.
- Call detail records must be captured for all internal and all external calls.

- Deploy a media gateway and a Mediation Server.
- Add a Client Version Policy and a Client Version Configuration.
- Add DNS records and DHCP options.
- Deploy a media gateway and a Director.

Correct Answer: C

Section: (none)

Explanation

Explanation/Reference:

99%

QUESTION 15

Click the Case Study button to review the scenario.

You need to recommend a solution to ensure that when users from the New York office travel to the London office, and they dial 911, the call is routed to the local emergency services operator.

What should you include in the recommendation?

Case Study Title (Case Study):

Litware, Inc.

Company Overview

Litware, Inc. is a global publishing company that has 1,000 employees.

Physical Locations

The company has a main office and a branch office. The main office is located in New York. The branch office is located in London. Each office has 500 users. Users regularly travel between the London office and the New York office. Users occasionally work from home.

Existing Environment

Network Infrastructure

The network contains an Active Directory domain named litwareinc.com. Litwareinc.com contains the servers configured as shown in the following table.

Server role	Server configuration
Microsoft Exchange Server 2010	<ul style="list-style-type: none">Two servers that run the Mailbox server role, the Hub Transport server role, and the Client Access server role in the London officeTwo servers that run the Mailbox server role, the Hub Transport server role, and the Client Access server role in the New York officeA single database availability group (DAG) that contains two mailbox databasesAll DAG members maintain a copy of each database
Lync Server 2010	<ul style="list-style-type: none">A Standard Edition server in the London officeA Standard Edition server in the New York officeA Mediation Server and a PSTN gateway in the London officeA Mediation Server and a PSTN gateway in the New York officeA consolidated Edge Server in the London officeA consolidated Edge Server in the New York officeAn Archiving Server that runs Microsoft SQL Server 2008 in the London office
Microsoft Forefront Threat Management Gateway (TMG)	<ul style="list-style-type: none">A two-node reverse proxy and a caching array that has Network Load Balancing (NLB) in the London officeA two-node reverse proxy and a caching array that has Network Load Balancing (NLB) in the New York office

All client computers run Windows XP Professional Service Pack 3 (SP3) and Microsoft Office Outlook 2007. Client computers run either Microsoft Office Communicator 2007 R2 or Microsoft Lync 2010.

Requirements

Business Goals

Litware has the following business goals:

- Minimize software costs.
- Minimize hardware costs.
- Minimize administrative effort.

Planned Changes

Litware plans to implement the following changes:

- Deploy Lync 2010 to all client computers.
- Implement Web conferencing and Web conferencing federation.
- Deploy Exchange Server 2010 Unified Messaging (UM) and integrate

Technical Requirements

Litware must meet the following technical requirements:

- Remote users must have access to IM, Web conferencing, and A/V conferencing.
- Users who use Office Communicator 2007 R2 must receive a message that contains a download link for Lync 2010.
- Client computers that run Office Communicator 2007 R2 must be prevented from connecting to the Lync infrastructure.

Bandwidth Management Requirements

Litware must meet the following requirements for managing bandwidth:

- Limit the total amount of bandwidth consumed on the network.
- Ensure that the amount of bandwidth available provides good call quality.
- Provide reporting on calls that could not be completed due to insufficient bandwidth.
- Reroute calls to alternate paths when there is an insufficient amount of bandwidth available to make a call.

Conferencing Requirements

The conferencing features required by the Active Directory groups are listed in the following table.

Group	Video	Audio	Data collaboration	Application sharing	Recording	Anonymous participants
Managers	X	X	X	X	X	X
Team leaders	X	X	X	X		
Sales	X	X	X			X
Accounts		X	X	X		
Call center		X				
Main office users		X	X			

*X indicates a required feature.

Availability Requirements

Litware must meet the following availability requirements:

- Ensure that remote users can join Web conferences if a single Edge Server fails.
- Ensure that Lync clients can retrieve voice mails if a single Exchange server fails.
- Ensure that internal users can sign in to Lync 2010 if a Lync Server 2010 Front End Server fails.
- Ensure that archived instant messages can be recovered if a database is corrupted or if storage fails.
- Ensure that the Central Management Store (CMS) is accessible if a single server fails or if the CMS is corrupted.

Compliance Requirements

Litware must meet the following compliance requirements:

- All IM conversations must be archived.
- Call detail records must be captured for all internal and all external calls.

- A. Modify the Dial Plan settings for the London office.
- B. Implement User Location Policies.
- C. Implement Site Location Policies.
- D. Modify the Dial Plan settings for the New York office.

Correct Answer: C

Section: (none)

Explanation

Explanation/Reference:

ok.

QUESTION 16

Click the Case Study button to review the scenario.

You need to recommend changes to the proposed Lync server design to meet the company's availability

requirements for SQL services.

What should you include in the recommendation?

Case Study Title (Case Study):
Litware, Inc.

Company Overview

Litware, Inc. is a global publishing company that has 1,000 employees.

Physical Locations

The company has a main office and a branch office. The main office is located in New York. The branch office is located in London. Each office has 500 users. Users regularly travel between the London office and the New York office. Users occasionally work from home.

Existing Environment

Network Infrastructure

The network contains an Active Directory domain named litwareinc.com. Litwareinc.com contains the servers configured as shown in the following table.

Server role	Server configuration
Microsoft Exchange Server 2010	<ul style="list-style-type: none">Two servers that run the Mailbox server role, the Hub Transport server role, and the Client Access server role in the London officeTwo servers that run the Mailbox server role, the Hub Transport server role, and the Client Access server role in the New York officeA single database availability group (DAG) that contains two mailbox databasesAll DAG members maintain a copy of each database
Lync Server 2010	<ul style="list-style-type: none">A Standard Edition server in the London officeA Standard Edition server in the New York officeA Mediation Server and a PSTN gateway in the London officeA Mediation Server and a PSTN gateway in the New York officeA consolidated Edge Server in the London officeA consolidated Edge Server in the New York officeAn Archiving Server that runs Microsoft SQL Server 2008 in the London office
Microsoft Forefront Threat Management Gateway (TMG)	<ul style="list-style-type: none">A two-node reverse proxy and a caching array that has Network Load Balancing (NLB) in the London officeA two-node reverse proxy and a caching array that has Network Load Balancing (NLB) in the New York office

All client computers run Windows XP Professional Service Pack 3 (SP3) and Microsoft Office Outlook 2007. Client computers run either Microsoft Office Communicator 2007 R2 or Microsoft Lync 2010.

Requirements

Business Goals

Litware has the following business goals:

- Minimize software costs.
- Minimize hardware costs.
- Minimize administrative effort.

Planned Changes

Litware plans to implement the following changes:

- Deploy Lync 2010 to all client computers.
- Implement Web conferencing and Web conferencing federation.
- Deploy Exchange Server 2010 Unified Messaging (UM) and integrate

Technical Requirements

Litware must meet the following technical requirements:

- Remote users must have access to IM, Web conferencing, and A/V conferencing.
- Users who use Office Communicator 2007 R2 must receive a message that contains a download link for Lync 2010.
- Client computers that run Office Communicator 2007 R2 must be prevented from connecting to the Lync infrastructure.

Bandwidth Management Requirements

Litware must meet the following requirements for managing bandwidth:

- Limit the total amount of bandwidth consumed on the network.
- Ensure that the amount of bandwidth available provides good call quality.
- Provide reporting on calls that could not be completed due to insufficient bandwidth.
- Reroute calls to alternate paths when there is an insufficient amount of bandwidth available to make a call.

Conferencing Requirements

The conferencing features required by the Active Directory groups are listed in the following table.

Group	Video	Audio	Data collaboration	Application sharing	Recording	Anonymous participants
Managers	X	X	X	X	X	X
Team leaders	X	X	X	X		
Sales	X	X	X			X
Accounts		X	X	X		
Call center		X				
Main office users		X	X			

*X indicates a required feature.

Availability Requirements

Litware must meet the following availability requirements:

- Ensure that remote users can join Web conferences if a single Edge Server fails.
- Ensure that Lync clients can retrieve voice mails if a single Exchange server fails.
- Ensure that internal users can sign in to Lync 2010 if a Lync Server 2010 Front End Server fails.
- Ensure that archived instant messages can be recovered if a database is corrupted or if storage fails.
- Ensure that the Central Management Store (CMS) is accessible if a single server fails or if the CMS is corrupted.

Compliance Requirements

Litware must meet the following compliance requirements:

- All IM conversations must be archived.
- Call detail records must be captured for all internal and all external calls.

- A. Network Load Balancing (NLB)
- B. DNS load balancing
- C. Log shipping
- D. Failover Clustering

Correct Answer: D

Section: (none)

Explanation

Explanation/Reference:

ok. 99%

Exam C

QUESTION 1

Click the Case Study button to review the scenario.

You need to recommend changes to the proposed Lync server design to meet the company's availability requirements for SQL services.

What should you include in the recommendation?

Case Study Title (Case Study):
Contoso Ltd.

Company Overview

Contoso, Ltd. is a large manufacturing company that has 2,600 employees.

Physical Locations

The company has a main office and a branch office. The main office is located in Denver. The branch office is located in Montreal. The main office has 2,000 users. The branch office has 500 users. The company has 100 users who access the corporate network remotely from their personal client computers.

Existing Environment

Network Infrastructure

Server role	Server configuration
Domain controller	Windows Server 2003 forest functional level Windows Server 2003 domain functional level
Microsoft Exchange Server 2010	Mailbox server role Hub Transport server role Client Access server role Two database availability groups (DAGs)
Certification authority (CA)	Enterprise root in contoso.com

The network contains an Active Directory domain named contoso.com. Contoso.com contains the servers configured as shown in the following table.

The network contains two SMTP domains named contoso.com and adatum.com. Users have e-mail addresses that use either the @contoso.com or the @adatum.com suffix.

A perimeter network at the main office contains all Internet-facing servers. The main office and the branch office connect to each other by using a WAN link.

Telephony Infrastructure

- The main office and the branch office have separate connections to the PSTN.
- The main office has two PSTN gateways and the branch office has a single PSTN gateway.

Requirements

Business Goals

Contoso has the following business goals:

- Minimize hardware costs.
- Minimize administrative effort.
- Minimize the need for end-users to perform manual configurations.

Proposed Lync Server Design

An independent consulting firm recommends the following Lync Server 2010 server design for Contoso:

- In the branch office, one Lync Server 2010 Mediation Server
- On the perimeter network, one Lync Server 2010 Edge Server
- In the branch office, one Lync Server 2010 Standard Edition server
- In the main office, one Lync Server 2010 server in a Front End pool
- In the main office, one server that runs Microsoft SQL Server 2008
- In the main office, one server that runs the Microsoft Exchange Server 2010 Unified Messaging server role

Availability Requirements

Contoso must meet the following availability requirements:

- Minimize the bandwidth utilization of the WAN links.
- Provide load balancing of the Lync services when possible.
- Ensure that all of the Lync services for all of the users are available if a single server fails.
- Ensure that users in the main office can make calls if a PSTN gateway in the main office fails.
- Ensure that users in the branch office can participate in Web conferencing sessions if a single server fails.
- Ensure that the branch office users can make calls if the connection between the branch office and the PSTN fails.

Voice Requirements

Contoso must meet the following voice requirements:

- To initiate a telephone call to the PSTN, internal users must dial 8 first.
- To initiate a long-distance call, internal users must enter a special code before dialing the phone number.
- All calls to an unassigned phone number must be routed to a pre-recorded message, and then to a receptionist.
- To initiate a call to users in the main office, internal users must dial 4 first, followed by a four-digit extension.
- To initiate a call to users in the branch office, internal users must dial 5 first, followed by a four-digit extension.
- Remote users must be able to make calls from Microsoft Lync 2010 to phone numbers on the PSTN.

Remote User Requirements

Contoso must meet the following remote user requirements:

- Ensure that remote users can download and install the certificate chain for the internal CA.
- Ensure that remote users can search for Lync-enabled users and add them to their Contacts list.
- Ensure that users can sign in by using their e-mail address when they connect to the new Lync environment.

- A. Network Load Balancing (NLB)
- B. DNS load balancing
- C. Log shipping
- D. Failover Clustering

Correct Answer: D

Section: (none)

Explanation

Explanation/Reference:

ok.

Log Shipping (Master-Slave)

Failover Clustering (Active-Passive)

because, in case of Master SQL failure you can't satisfy following requirement:

* Ensure that all of the Lync services for all of the users are available if a single server fails.

QUESTION 2

Click the Case Study button to review the scenario.

You need to recommend a certificate for the Lync Server 2010 deployment that meets the company's remote user requirements.

What should you include in the recommendation?

Case Study Title (Case Study):
Contoso Ltd.

Company Overview

Contoso, Ltd. is a large manufacturing company that has 2,600 employees.

Physical Locations

The company has a main office and a branch office. The main office is located in Denver. The branch office is located in Montreal. The main office has 2,000 users. The branch office has 500 users. The company has 100 users who access the corporate network remotely from their personal client computers.

Existing Environment

Network Infrastructure

Server role	Server configuration
Domain controller	Windows Server 2003 forest functional level Windows Server 2003 domain functional level
Microsoft Exchange Server 2010	Mailbox server role Hub Transport server role Client Access server role Two database availability groups (DAGs)
Certification authority (CA)	Enterprise root in contoso.com

The network contains an Active Directory domain named contoso.com. Contoso.com contains the servers configured as shown in the following table.

The network contains two SMTP domains named contoso.com and adatum.com. Users have e-mail addresses that use either the @contoso.com or the @adatum.com suffix.

A perimeter network at the main office contains all Internet-facing servers. The main office and the branch office connect to each other by using a WAN link.

Telephony Infrastructure

- The main office and the branch office have separate connections to the PSTN.
- The main office has two PSTN gateways and the branch office has a single PSTN gateway.

Requirements

Business Goals

Contoso has the following business goals:

- Minimize hardware costs.
- Minimize administrative effort.
- Minimize the need for end-users to perform manual configurations.

Proposed Lync Server Design

An independent consulting firm recommends the following Lync Server 2010 server design for Contoso:

- In the branch office, one Lync Server 2010 Mediation Server
- On the perimeter network, one Lync Server 2010 Edge Server
- In the branch office, one Lync Server 2010 Standard Edition server
- In the main office, one Lync Server 2010 server in a Front End pool
- In the main office, one server that runs Microsoft SQL Server 2008
- In the main office, one server that runs the Microsoft Exchange Server 2010 Unified Messaging server role

Availability Requirements

Contoso must meet the following availability requirements:

- Minimize the bandwidth utilization of the WAN links.
- Provide load balancing of the Lync services when possible.
- Ensure that all of the Lync services for all of the users are available if a single server fails.
- Ensure that users in the main office can make calls if a PSTN gateway in the main office fails.
- Ensure that users in the branch office can participate in Web conferencing sessions if a single server fails.
- Ensure that the branch office users can make calls if the connection between the branch office and the PSTN fails.

Voice Requirements

Contoso must meet the following voice requirements:

- To initiate a telephone call to the PSTN, internal users must dial 8 first.
- To initiate a long-distance call, internal users must enter a special code before dialing the phone number.
- All calls to an unassigned phone number must be routed to a pre-recorded message, and then to a receptionist.
- To initiate a call to users in the main office, internal users must dial 4 first, followed by a four-digit extension.
- To initiate a call to users in the branch office, internal users must dial 5 first, followed by a four-digit extension.
- Remote users must be able to make calls from Microsoft Lync 2010 to phone numbers on the PSTN.

Remote User Requirements

Contoso must meet the following remote user requirements:

- Ensure that remote users can download and install the certificate chain for the internal CA.
- Ensure that remote users can search for Lync-enabled users and add them to their Contacts list.
- Ensure that users can sign in by using their e-mail address when they connect to the new Lync environment.

- A. Deploy a certificate from the internal CA to the external interface of the Edge Server.
- B. Deploy a certificate from a trusted third-party CA to the external interface of the Edge Server.
- C. Deploy a certificate from the internal CA to the Mediation Servers.
- D. Deploy a certificate from a trusted third-party CA to the Mediation Servers.

Correct Answer: B

Section: (none)

Explanation

Explanation/Reference:

ok.

QUESTION 3

Click the Case Study button to review the scenario.

You need to recommend an Enterprise Voice configuration that meets the company's voice requirements.

What should you include in the recommendation?

Case Study Title (Case Study):
Contoso Ltd.

Company Overview

Contoso, Ltd. is a large manufacturing company that has 2,600 employees.

Physical Locations

The company has a main office and a branch office. The main office is located in Denver. The branch office is located in Montreal. The main office has 2,000 users. The branch office has 500 users. The company has 100 users who access the corporate network remotely from their personal client computers.

Existing Environment

Network Infrastructure

Server role	Server configuration
Domain controller	Windows Server 2003 forest functional level Windows Server 2003 domain functional level
Microsoft Exchange Server 2010	Mailbox server role Hub Transport server role Client Access server role Two database availability groups (DAGs)
Certification authority (CA)	Enterprise root in contoso.com

The network contains an Active Directory domain named contoso.com. Contoso.com contains the servers configured as shown in the following table.

The network contains two SMTP domains named contoso.com and adatum.com. Users have e-mail addresses that use either the @contoso.com or the @adatum.com suffix.

A perimeter network at the main office contains all Internet-facing servers. The main office and the branch office connect to each other by using a WAN link.

Telephony Infrastructure

- The main office and the branch office have separate connections to the PSTN.
- The main office has two PSTN gateways and the branch office has a single PSTN gateway.

Requirements

Business Goals

Contoso has the following business goals:

- Minimize hardware costs.
- Minimize administrative effort.
- Minimize the need for end-users to perform manual configurations.

Proposed Lync Server Design

An independent consulting firm recommends the following Lync Server 2010 server design for Contoso:

- In the branch office, one Lync Server 2010 Mediation Server
- On the perimeter network, one Lync Server 2010 Edge Server
- In the branch office, one Lync Server 2010 Standard Edition server
- In the main office, one Lync Server 2010 server in a Front End pool

- In the main office, one server that runs Microsoft SQL Server 2008
- In the main office, one server that runs the Microsoft Exchange Server 2010 Unified Messaging server role

Availability Requirements

Contoso must meet the following availability requirements:

- Minimize the bandwidth utilization of the WAN links.
- Provide load balancing of the Lync services when possible.
- Ensure that all of the Lync services for all of the users are available if a single server fails.
- Ensure that users in the main office can make calls if a PSTN gateway in the main office fails.
- Ensure that users in the branch office can participate in Web conferencing sessions if a single server fails.
- Ensure that the branch office users can make calls if the connection between the branch office and the PSTN fails.

Voice Requirements

Contoso must meet the following voice requirements:

- To initiate a telephone call to the PSTN, internal users must dial 8 first.
- To initiate a long-distance call, internal users must enter a special code before dialing the phone number.
- All calls to an unassigned phone number must be routed to a pre-recorded message, and then to a receptionist.
- To initiate a call to users in the main office, internal users must dial 4 first, followed by a four-digit extension.
- To initiate a call to users in the branch office, internal users must dial 5 first, followed by a four-digit extension.
- Remote users must be able to make calls from Microsoft Lync 2010 to phone numbers on the PSTN.

Remote User Requirements

Contoso must meet the following remote user requirements:

- Ensure that remote users can download and install the certificate chain for the internal CA.
- Ensure that remote users can search for Lync-enabled users and add them to their Contacts list.
- Ensure that users can sign in by using their e-mail address when they connect to the new Lync environment.

- A. four Voice Policies and one Response Group
- B. one dial plan that contains four normalization rules
- C. one Voice Policy and four Response Groups
- D. two dial plans that contain two normalization rules

Correct Answer: B

Section: (none)

Explanation

Explanation/Reference:

ok.

QUESTION 4

Click the Case Study button to review the scenario.

You need to recommend a solution for routing calls made to unassigned numbers. The solution must meet the company's voice requirements.

What should you include in the recommendation?

Case Study Title (Case Study):

Contoso Ltd.

Company Overview

Contoso, Ltd. is a large manufacturing company that has 2,600 employees.

Physical Locations

The company has a main office and a branch office. The main office is located in Denver. The branch office is located in Montreal. The main office has 2,000 users. The branch office has 500 users. The company has 100 users who access the corporate network remotely from their personal client computers.

Existing Environment

Network Infrastructure

Server role	Server configuration
Domain controller	Windows Server 2003 forest functional level Windows Server 2003 domain functional level
Microsoft Exchange Server 2010	Mailbox server role Hub Transport server role Client Access server role Two database availability groups (DAGs)
Certification authority (CA)	Enterprise root in contoso.com

The network contains an Active Directory domain named contoso.com. Contoso.com contains the servers configured as shown in the following table.

The network contains two SMTP domains named contoso.com and adatum.com. Users have e-mail addresses that use either the @contoso.com or the @adatum.com suffix.

A perimeter network at the main office contains all Internet-facing servers. The main office and the branch office connect to each other by using a WAN link.

Telephony Infrastructure

- The main office and the branch office have separate connections to the PSTN.
- The main office has two PSTN gateways and the branch office has a single PSTN gateway.

Requirements

Business Goals

Contoso has the following business goals:

- Minimize hardware costs.
- Minimize administrative effort.
- Minimize the need for end-users to perform manual configurations.

Proposed Lync Server Design

An independent consulting firm recommends the following Lync Server 2010 server design for Contoso:

- In the branch office, one Lync Server 2010 Mediation Server
- On the perimeter network, one Lync Server 2010 Edge Server
- In the branch office, one Lync Server 2010 Standard Edition server
- In the main office, one Lync Server 2010 server in a Front End pool
- In the main office, one server that runs Microsoft SQL Server 2008
- In the main office, one server that runs the Microsoft Exchange Server 2010 Unified Messaging server role

Availability Requirements

Contoso must meet the following availability requirements:

- Minimize the bandwidth utilization of the WAN links.
- Provide load balancing of the Lync services when possible.
- Ensure that all of the Lync services for all of the users are available if a single server fails.
- Ensure that users in the main office can make calls if a PSTN gateway in the main office fails.
- Ensure that users in the branch office can participate in Web conferencing sessions if a single server fails.
- Ensure that the branch office users can make calls if the connection between the branch office and the PSTN fails.

Voice Requirements

Contoso must meet the following voice requirements:

- To initiate a telephone call to the PSTN, internal users must dial 8 first.
- To initiate a long-distance call, internal users must enter a special code before dialing the phone number.
- All calls to an unassigned phone number must be routed to a pre-recorded message, and then to a receptionist.
- To initiate a call to users in the main office, internal users must dial 4 first, followed by a four-digit extension.
- To initiate a call to users in the branch office, internal users must dial 5 first, followed by a four-digit extension.
- Remote users must be able to make calls from Microsoft Lync 2010 to phone numbers on the PSTN.

Remote User Requirements

Contoso must meet the following remote user requirements:

- Ensure that remote users can download and install the certificate chain for the internal CA.
- Ensure that remote users can search for Lync-enabled users and add them to their Contacts list.
- Ensure that users can sign in by using their e-mail address when they connect to the new Lync environment.

- registrar authentication and PSTN Usage records
- PSTN re-routing and monitoring
- the Announcement application
- workflow agents and call detail records

Correct Answer: C

Section: (none)

Explanation

Explanation/Reference:

ok.

QUESTION 5

Click the Case Study button to review the scenario.

You need to recommend a solution for the branch office users that meets the company's availability requirements.

What should you include in the recommendation?

Case Study Title (Case Study):

Contoso Ltd.

Company Overview

Contoso, Ltd. is a large manufacturing company that has 2,600 employees.

Physical Locations

The company has a main office and a branch office. The main office is located in Denver. The branch office is located in Montreal. The main office has 2,000 users. The branch office has 500 users. The company has 100

users who access the corporate network remotely from their personal client computers.

Existing Environment

Network Infrastructure

Server role	Server configuration
Domain controller	Windows Server 2003 forest functional level Windows Server 2003 domain functional level
Microsoft Exchange Server 2010	Mailbox server role Hub Transport server role Client Access server role Two database availability groups (DAGs)
Certification authority (CA)	Enterprise root in contoso.com

The network contains an Active Directory domain named contoso.com. Contoso.com contains the servers configured as shown in the following table.

The network contains two SMTP domains named contoso.com and adatum.com. Users have e-mail addresses that use either the @contoso.com or the @adatum.com suffix.

A perimeter network at the main office contains all Internet-facing servers. The main office and the branch office connect to each other by using a WAN link.

Telephony Infrastructure

- The main office and the branch office have separate connections to the PSTN.
- The main office has two PSTN gateways and the branch office has a single PSTN gateway.

Requirements

Business Goals

Contoso has the following business goals:

- Minimize hardware costs.
- Minimize administrative effort.
- Minimize the need for end-users to perform manual configurations.

Proposed Lync Server Design

An independent consulting firm recommends the following Lync Server 2010 server design for Contoso:

- In the branch office, one Lync Server 2010 Mediation Server
- On the perimeter network, one Lync Server 2010 Edge Server
- In the branch office, one Lync Server 2010 Standard Edition server
- In the main office, one Lync Server 2010 server in a Front End pool
- In the main office, one server that runs Microsoft SQL Server 2008
- In the main office, one server that runs the Microsoft Exchange Server 2010 Unified Messaging server role

Availability Requirements

Contoso must meet the following availability requirements:

- Minimize the bandwidth utilization of the WAN links.
- Provide load balancing of the Lync services when possible.
- Ensure that all of the Lync services for all of the users are available if a single server fails.
- Ensure that users in the main office can make calls if a PSTN gateway in the main office fails.
- Ensure that users in the branch office can participate in Web conferencing sessions if a single server fails.
- Ensure that the branch office users can make calls if the connection between the branch office and the

PSTN fails.

Voice Requirements

Contoso must meet the following voice requirements:

- To initiate a telephone call to the PSTN, internal users must dial 8 first.
- To initiate a long-distance call, internal users must enter a special code before dialing the phone number.
- All calls to an unassigned phone number must be routed to a pre-recorded message, and then to a receptionist.
- To initiate a call to users in the main office, internal users must dial 4 first, followed by a four-digit extension.
- To initiate a call to users in the branch office, internal users must dial 5 first, followed by a four-digit extension.
- Remote users must be able to make calls from Microsoft Lync 2010 to phone numbers on the PSTN.

Remote User Requirements

Contoso must meet the following remote user requirements:

- Ensure that remote users can download and install the certificate chain for the internal CA.
- Ensure that remote users can search for Lync-enabled users and add them to their Contacts list.
- Ensure that users can sign in by using their e-mail address when they connect to the new Lync environment.

- A. a Director
- B. two Location Policies
- C. a Survivable Branch Appliance (SBA)
- D. a primary registrar and a backup registrar

Correct Answer: D

Section: (none)

Explanation

Explanation/Reference:

this.

QUESTION 6

Click the Case Study button to review the scenario.

You need to recommend changes to the proposed Lync server design to meet the company's availability requirements for voice mail.

What should you include in the recommendation?

Case Study Title (Case Study):

Contoso Ltd.

Company Overview

Contoso, Ltd. is a large manufacturing company that has 2,600 employees.

Physical Locations

The company has a main office and a branch office. The main office is located in Denver. The branch office is located in Montreal. The main office has 2,000 users. The branch office has 500 users. The company has 100 users who access the corporate network remotely from their personal client computers.

Existing Environment

Network Infrastructure

Server role	Server configuration
Domain controller	Windows Server 2003 forest functional level Windows Server 2003 domain functional level
Microsoft Exchange Server 2010	Mailbox server role Hub Transport server role Client Access server role Two database availability groups (DAGs)
Certification authority (CA)	Enterprise root in contoso.com

The network contains an Active Directory domain named contoso.com. Contoso.com contains the servers configured as shown in the following table.

The network contains two SMTP domains named contoso.com and adatum.com. Users have e-mail addresses that use either the @contoso.com or the @adatum.com suffix.

A perimeter network at the main office contains all Internet-facing servers. The main office and the branch office connect to each other by using a WAN link.

Telephony Infrastructure

- The main office and the branch office have separate connections to the PSTN.
- The main office has two PSTN gateways and the branch office has a single PSTN gateway.

Requirements

Business Goals

Contoso has the following business goals:

- Minimize hardware costs.
- Minimize administrative effort.
- Minimize the need for end-users to perform manual configurations.

Proposed Lync Server Design

An independent consulting firm recommends the following Lync Server 2010 server design for Contoso:

- In the branch office, one Lync Server 2010 Mediation Server
- On the perimeter network, one Lync Server 2010 Edge Server
- In the branch office, one Lync Server 2010 Standard Edition server
- In the main office, one Lync Server 2010 server in a Front End pool
- In the main office, one server that runs Microsoft SQL Server 2008
- In the main office, one server that runs the Microsoft Exchange Server 2010 Unified Messaging server role

Availability Requirements

Contoso must meet the following availability requirements:

- Minimize the bandwidth utilization of the WAN links.
- Provide load balancing of the Lync services when possible.
- Ensure that all of the Lync services for all of the users are available if a single server fails.
- Ensure that users in the main office can make calls if a PSTN gateway in the main office fails.
- Ensure that users in the branch office can participate in Web conferencing sessions if a single server fails.
- Ensure that the branch office users can make calls if the connection between the branch office and the PSTN fails.

Voice Requirements

Contoso must meet the following voice requirements:

- To initiate a telephone call to the PSTN, internal users must dial 8 first.

- To initiate a long-distance call, internal users must enter a special code before dialing the phone number.
- All calls to an unassigned phone number must be routed to a pre-recorded message, and then to a receptionist.
- To initiate a call to users in the main office, internal users must dial 4 first, followed by a four-digit extension.
- To initiate a call to users in the branch office, internal users must dial 5 first, followed by a four-digit extension.
- Remote users must be able to make calls from Microsoft Lync 2010 to phone numbers on the PSTN.

Remote User Requirements

Contoso must meet the following remote user requirements:

- Ensure that remote users can download and install the certificate chain for the internal CA.
- Ensure that remote users can search for Lync-enabled users and add them to their Contacts list.
- Ensure that users can sign in by using their e-mail address when they connect to the new Lync environment.

- A. two call attendants
- B. two Location Information Servers
- C. two Response Groups
- D. an additional server that has the Unified Messaging server role deployed

Correct Answer: D

Section: (none)

Explanation

Explanation/Reference:

QUESTION 7

Click the Case Study button to review the scenario.

You need to recommend changes to the proposed Lync Server design that meet the company's remote user requirements.

What should include in the recommendation?

Case Study Title (Case Study):
Contoso Ltd.

Company Overview

Contoso, Ltd. is a large manufacturing company that has 2,600 employees.

Physical Locations

The company has a main office and a branch office. The main office is located in Denver. The branch office is located in Montreal. The main office has 2,000 users. The branch office has 500 users. The company has 100 users who access the corporate network remotely from their personal client computers.

Existing Environment

Network Infrastructure

Server role	Server configuration
Domain controller	Windows Server 2003 forest functional level Windows Server 2003 domain functional level
Microsoft Exchange Server 2010	Mailbox server role

	Hub Transport server role Client Access server role Two database availability groups (DAGs)
Certification authority (CA)	Enterprise root in contoso.com

The network contains an Active Directory domain named contoso.com. Contoso.com contains the servers configured as shown in the following table.

The network contains two SMTP domains named contoso.com and adatum.com. Users have e-mail addresses that use either the @contoso.com or the @adatum.com suffix.

A perimeter network at the main office contains all Internet-facing servers. The main office and the branch office connect to each other by using a WAN link.

Telephony Infrastructure

- The main office and the branch office have separate connections to the PSTN.
- The main office has two PSTN gateways and the branch office has a single PSTN gateway.

Requirements

Business Goals

Contoso has the following business goals:

- Minimize hardware costs.
- Minimize administrative effort.
- Minimize the need for end-users to perform manual configurations.

Proposed Lync Server Design

An independent consulting firm recommends the following Lync Server 2010 server design for Contoso:

- In the branch office, one Lync Server 2010 Mediation Server
- On the perimeter network, one Lync Server 2010 Edge Server
- In the branch office, one Lync Server 2010 Standard Edition server
- In the main office, one Lync Server 2010 server in a Front End pool
- In the main office, one server that runs Microsoft SQL Server 2008
- In the main office, one server that runs the Microsoft Exchange Server 2010 Unified Messaging server role

Availability Requirements

Contoso must meet the following availability requirements:

- Minimize the bandwidth utilization of the WAN links.
- Provide load balancing of the Lync services when possible.
- Ensure that all of the Lync services for all of the users are available if a single server fails.
- Ensure that users in the main office can make calls if a PSTN gateway in the main office fails.
- Ensure that users in the branch office can participate in Web conferencing sessions if a single server fails.
- Ensure that the branch office users can make calls if the connection between the branch office and the PSTN fails.

Voice Requirements

Contoso must meet the following voice requirements:

- To initiate a telephone call to the PSTN, internal users must dial 8 first.
- To initiate a long-distance call, internal users must enter a special code before dialing the phone number.
- All calls to an unassigned phone number must be routed to a pre-recorded message, and then to a receptionist.
- To initiate a call to users in the main office, internal users must dial 4 first, followed by a four-digit extension.
- To initiate a call to users in the branch office, internal users must dial 5 first, followed by a four-digit extension.

- Remote users must be able to make calls from Microsoft Lync 2010 to phone numbers on the PSTN.

Remote User Requirements

Contoso must meet the following remote user requirements:

- Ensure that remote users can download and install the certificate chain for the internal CA.
- Ensure that remote users can search for Lync-enabled users and add them to their Contacts list.
- Ensure that users can sign in by using their e-mail address when they connect to the new Lync environment.

- A. multiple Location Policies
- B. Active Directory Lightweight Directory Services (AD LDS)
- C. a reverse proxy array
- D. multiple Alias (CNAME) records

Correct Answer: C

Section: (none)

Explanation

Explanation/Reference:

this.

QUESTION 8

Click the Case Study button to review the scenario.

You need to recommend changes to the proposed Lync server design that meet the company's availability requirements for PSTN connectivity in the main office.

What should you include in the recommendation?

Case Study Title (Case Study):

Contoso Ltd.

Company Overview

Contoso, Ltd. is a large manufacturing company that has 2,600 employees.

Physical Locations

The company has a main office and a branch office. The main office is located in Denver. The branch office is located in Montreal. The main office has 2,000 users. The branch office has 500 users. The company has 100 users who access the corporate network remotely from their personal client computers.

Existing Environment

Network Infrastructure

Server role	Server configuration
Domain controller	Windows Server 2003 forest functional level Windows Server 2003 domain functional level
Microsoft Exchange Server 2010	Mailbox server role Hub Transport server role Client Access server role Two database availability groups (DAGs)
Certification authority (CA)	Enterprise root in contoso.com

The network contains an Active Directory domain named contoso.com. Contoso.com contains the servers

configured as shown in the following table.

The network contains two SMTP domains named contoso.com and adatum.com. Users have e-mail addresses that use either the @contoso.com or the @adatum.com suffix.

A perimeter network at the main office contains all Internet-facing servers. The main office and the branch office connect to each other by using a WAN link.

Telephony Infrastructure

- The main office and the branch office have separate connections to the PSTN.
- The main office has two PSTN gateways and the branch office has a single PSTN gateway.

Requirements

Business Goals

Contoso has the following business goals:

- Minimize hardware costs.
- Minimize administrative effort.
- Minimize the need for end-users to perform manual configurations.

Proposed Lync Server Design

An independent consulting firm recommends the following Lync Server 2010 server design for Contoso:

- In the branch office, one Lync Server 2010 Mediation Server
- On the perimeter network, one Lync Server 2010 Edge Server
- In the branch office, one Lync Server 2010 Standard Edition server
- In the main office, one Lync Server 2010 server in a Front End pool
- In the main office, one server that runs Microsoft SQL Server 2008
- In the main office, one server that runs the Microsoft Exchange Server 2010 Unified Messaging server role

Availability Requirements

Contoso must meet the following availability requirements:

- Minimize the bandwidth utilization of the WAN links.
- Provide load balancing of the Lync services when possible.
- Ensure that all of the Lync services for all of the users are available if a single server fails.
- Ensure that users in the main office can make calls if a PSTN gateway in the main office fails.
- Ensure that users in the branch office can participate in Web conferencing sessions if a single server fails.
- Ensure that the branch office users can make calls if the connection between the branch office and the PSTN fails.

Voice Requirements

Contoso must meet the following voice requirements:

- To initiate a telephone call to the PSTN, internal users must dial 8 first.
- To initiate a long-distance call, internal users must enter a special code before dialing the phone number.
- All calls to an unassigned phone number must be routed to a pre-recorded message, and then to a receptionist.
- To initiate a call to users in the main office, internal users must dial 4 first, followed by a four-digit extension.
- To initiate a call to users in the branch office, internal users must dial 5 first, followed by a four-digit extension.
- Remote users must be able to make calls from Microsoft Lync 2010 to phone numbers on the PSTN.

Remote User Requirements

Contoso must meet the following remote user requirements:

- Ensure that remote users can download and install the certificate chain for the internal CA.
- Ensure that remote users can search for Lync-enabled users and add them to their Contacts list.

- Ensure that users can sign in by using their e-mail address when they connect to the new Lync environment.
- A. a Response Group.
B. a new dial plan.
C. an additional Lync Server 2010 server in the Front End pool.
D. an additional server that runs the Exchange Server 2010 Unified Messaging server role.

Correct Answer: C

Section: (none)

Explanation

Explanation/Reference:

ok. elimination approach.

QUESTION 9

Click the Case Study button to review the scenario.

You need to recommend a Web conferencing solution for the Lync Server 2010 servers in the main office. The solution must meet the company's availability requirements.

What should you include in the recommendation?

Case Study Title (Case Study):

Contoso Ltd.

Company Overview

Contoso, Ltd. is a large manufacturing company that has 2,600 employees.

Physical Locations

The company has a main office and a branch office. The main office is located in Denver. The branch office is located in Montreal. The main office has 2,000 users. The branch office has 500 users. The company has 100 users who access the corporate network remotely from their personal client computers.

Existing Environment

Network Infrastructure

Server role	Server configuration
Domain controller	Windows Server 2003 forest functional level Windows Server 2003 domain functional level
Microsoft Exchange Server 2010	Mailbox server role Hub Transport server role Client Access server role Two database availability groups (DAGs)
Certification authority (CA)	Enterprise root in contoso.com

The network contains an Active Directory domain named contoso.com. Contoso.com contains the servers configured as shown in the following table.

The network contains two SMTP domains named contoso.com and adatum.com. Users have e-mail addresses that use either the @contoso.com or the @adatum.com suffix.

A perimeter network at the main office contains all Internet-facing servers. The main office and the branch office connect to each other by using a WAN link.

Telephony Infrastructure

- The main office and the branch office have separate connections to the PSTN.
- The main office has two PSTN gateways and the branch office has a single PSTN gateway.

Requirements

Business Goals

Contoso has the following business goals:

- Minimize hardware costs.
- Minimize administrative effort.
- Minimize the need for end-users to perform manual configurations.

Proposed Lync Server Design

An independent consulting firm recommends the following Lync Server 2010 server design for Contoso:

- In the branch office, one Lync Server 2010 Mediation Server
- On the perimeter network, one Lync Server 2010 Edge Server
- In the branch office, one Lync Server 2010 Standard Edition server
- In the main office, one Lync Server 2010 server in a Front End pool
- In the main office, one server that runs Microsoft SQL Server 2008
- In the main office, one server that runs the Microsoft Exchange Server 2010 Unified Messaging server role

Availability Requirements

Contoso must meet the following availability requirements:

- Minimize the bandwidth utilization of the WAN links.
- Provide load balancing of the Lync services when possible.
- Ensure that all of the Lync services for all of the users are available if a single server fails.
- Ensure that users in the main office can make calls if a PSTN gateway in the main office fails.
- Ensure that users in the branch office can participate in Web conferencing sessions if a single server fails.
- Ensure that the branch office users can make calls if the connection between the branch office and the PSTN fails.

Voice Requirements

Contoso must meet the following voice requirements:

- To initiate a telephone call to the PSTN, internal users must dial 8 first.
- To initiate a long-distance call, internal users must enter a special code before dialing the phone number.
- All calls to an unassigned phone number must be routed to a pre-recorded message, and then to a receptionist.
- To initiate a call to users in the main office, internal users must dial 4 first, followed by a four-digit extension.
- To initiate a call to users in the branch office, internal users must dial 5 first, followed by a four-digit extension.
- Remote users must be able to make calls from Microsoft Lync 2010 to phone numbers on the PSTN.

Remote User Requirements

Contoso must meet the following remote user requirements:

- Ensure that remote users can download and install the certificate chain for the internal CA.
- Ensure that remote users can search for Lync-enabled users and add them to their Contacts list.
- Ensure that users can sign in by using their e-mail address when they connect to the new Lync environment.

- A. two Standard Edition servers configured to use hardware load balancing
- B. two servers in a Director pool configured to use Network Load Balancing (NLB)
- C. two servers in an Enterprise Edition Front End pool configured to use hardware load balancing
- D. two servers in an Enterprise Edition Front End pool configured to use DNS load balancing

Correct Answer: C

Section: (none)

Explanation

Explanation/Reference:

this.

QUESTION 10

Click the Case Study button to review the scenario.

You need to recommend a PSTN connectivity solution for the branch office that meets the company's availability requirements.

What should you include in the recommendation?

Case Study Title (Case Study):

Contoso Ltd.

Company Overview

Contoso, Ltd. is a large manufacturing company that has 2,600 employees.

Physical Locations

The company has a main office and a branch office. The main office is located in Denver. The branch office is located in Montreal. The main office has 2,000 users. The branch office has 500 users. The company has 100 users who access the corporate network remotely from their personal client computers.

Existing Environment

Network Infrastructure

Server role	Server configuration
Domain controller	Windows Server 2003 forest functional level Windows Server 2003 domain functional level
Microsoft Exchange Server 2010	Mailbox server role Hub Transport server role Client Access server role Two database availability groups (DAGs)
Certification authority (CA)	Enterprise root in contoso.com

The network contains an Active Directory domain named contoso.com. Contoso.com contains the servers configured as shown in the following table.

The network contains two SMTP domains named contoso.com and adatum.com. Users have e-mail addresses that use either the @contoso.com or the @adatum.com suffix.

A perimeter network at the main office contains all Internet-facing servers. The main office and the branch office connect to each other by using a WAN link.

Telephony Infrastructure

- The main office and the branch office have separate connections to the PSTN.
- The main office has two PSTN gateways and the branch office has a single PSTN gateway.

Requirements

Business Goals

Contoso has the following business goals:

- Minimize hardware costs.
- Minimize administrative effort.
- Minimize the need for end-users to perform manual configurations.

Proposed Lync Server Design

An independent consulting firm recommends the following Lync Server 2010 server design for Contoso:

- In the branch office, one Lync Server 2010 Mediation Server
- On the perimeter network, one Lync Server 2010 Edge Server
- In the branch office, one Lync Server 2010 Standard Edition server
- In the main office, one Lync Server 2010 server in a Front End pool
- In the main office, one server that runs Microsoft SQL Server 2008
- In the main office, one server that runs the Microsoft Exchange Server 2010 Unified Messaging server role

Availability Requirements

Contoso must meet the following availability requirements:

- Minimize the bandwidth utilization of the WAN links.
- Provide load balancing of the Lync services when possible.
- Ensure that all of the Lync services for all of the users are available if a single server fails.
- Ensure that users in the main office can make calls if a PSTN gateway in the main office fails.
- Ensure that users in the branch office can participate in Web conferencing sessions if a single server fails.
- Ensure that the branch office users can make calls if the connection between the branch office and the PSTN fails.

Voice Requirements

Contoso must meet the following voice requirements:

- To initiate a telephone call to the PSTN, internal users must dial 8 first.
- To initiate a long-distance call, internal users must enter a special code before dialing the phone number.
- All calls to an unassigned phone number must be routed to a pre-recorded message, and then to a receptionist.
- To initiate a call to users in the main office, internal users must dial 4 first, followed by a four-digit extension.
- To initiate a call to users in the branch office, internal users must dial 5 first, followed by a four-digit extension.
- Remote users must be able to make calls from Microsoft Lync 2010 to phone numbers on the PSTN.

Remote User Requirements

Contoso must meet the following remote user requirements:

- Ensure that remote users can download and install the certificate chain for the internal CA.
- Ensure that remote users can search for Lync-enabled users and add them to their Contacts list.
- Ensure that users can sign in by using their e-mail address when they connect to the new Lync environment.

- A. multiple voice route policies
- B. Call Admission Control
- C. Exchange Server 2010 Unified Messaging (UM)
- D. Location Policies

Correct Answer: A

Section: (none)

Explanation

Explanation/Reference:

this.

QUESTION 11

Click the Case Study button to review the scenario.

You need to identify which DNS records are required to provide automatic client sign-in for the remote users.

Which records should you identify?

Case Study Title (Case Study):
Contoso Ltd.

Company Overview

Contoso, Ltd. is a large manufacturing company that has 2,600 employees.

Physical Locations

The company has a main office and a branch office. The main office is located in Denver. The branch office is located in Montreal. The main office has 2,000 users. The branch office has 500 users. The company has 100 users who access the corporate network remotely from their personal client computers.

Existing Environment

Network Infrastructure

Server role	Server configuration
Domain controller	Windows Server 2003 forest functional level Windows Server 2003 domain functional level
Microsoft Exchange Server 2010	Mailbox server role Hub Transport server role Client Access server role Two database availability groups (DAGs)
Certification authority (CA)	Enterprise root in contoso.com

The network contains an Active Directory domain named contoso.com. Contoso.com contains the servers configured as shown in the following table.

The network contains two SMTP domains named contoso.com and adatum.com. Users have e-mail addresses that use either the @contoso.com or the @adatum.com suffix.

A perimeter network at the main office contains all Internet-facing servers. The main office and the branch office connect to each other by using a WAN link.

Telephony Infrastructure

- The main office and the branch office have separate connections to the PSTN.
- The main office has two PSTN gateways and the branch office has a single PSTN gateway.

Requirements

Business Goals

Contoso has the following business goals:

- Minimize hardware costs.
- Minimize administrative effort.
- Minimize the need for end-users to perform manual configurations.

Proposed Lync Server Design

An independent consulting firm recommends the following Lync Server 2010 server design for Contoso:

- In the branch office, one Lync Server 2010 Mediation Server
- On the perimeter network, one Lync Server 2010 Edge Server
- In the branch office, one Lync Server 2010 Standard Edition server
- In the main office, one Lync Server 2010 server in a Front End pool
- In the main office, one server that runs Microsoft SQL Server 2008
- In the main office, one server that runs the Microsoft Exchange Server 2010 Unified Messaging server role

Availability Requirements

Contoso must meet the following availability requirements:

- Minimize the bandwidth utilization of the WAN links.
- Provide load balancing of the Lync services when possible.
- Ensure that all of the Lync services for all of the users are available if a single server fails.
- Ensure that users in the main office can make calls if a PSTN gateway in the main office fails.
- Ensure that users in the branch office can participate in Web conferencing sessions if a single server fails.
- Ensure that the branch office users can make calls if the connection between the branch office and the PSTN fails.

Voice Requirements

Contoso must meet the following voice requirements:

- To initiate a telephone call to the PSTN, internal users must dial 8 first.
- To initiate a long-distance call, internal users must enter a special code before dialing the phone number.
- All calls to an unassigned phone number must be routed to a pre-recorded message, and then to a receptionist.
- To initiate a call to users in the main office, internal users must dial 4 first, followed by a four-digit extension.
- To initiate a call to users in the branch office, internal users must dial 5 first, followed by a four-digit extension.
- Remote users must be able to make calls from Microsoft Lync 2010 to phone numbers on the PSTN.

Remote User Requirements

Contoso must meet the following remote user requirements:

- Ensure that remote users can download and install the certificate chain for the internal CA.
- Ensure that remote users can search for Lync-enabled users and add them to their Contacts list.
- Ensure that users can sign in by using their e-mail address when they connect to the new Lync environment.

- A. two Alias (CNAME) records and one Host (A) record on an internal DNS zone
- B. two Service Location (SRV) records and one Host (A) record on a public DNS zone
- C. two Service Location (SRV) records and one Host (A) record on an internal DNS zone
- D. two Alias (CNAME) records and one Host (A) record on a public DNS zone

Correct Answer: B

Section: (none)

Explanation

Explanation/Reference:

ok.

_sip._tls.contoso.com For external TLS connections
_sip._tls.adatum.com

Exam D

QUESTION 1

ok.

Click the Case Study button to review the scenario.
Then click the Exhibit tab to see the exhibit.

You are evaluating the use of standard gateway devices that support eight T1 interfaces each. The gateways do not support media bypass.

You need to recommend a solution to support PSTN calls from the main office. The solution must meet the company's technical requirements.

What should you include in the recommendation?

Case Study Title (Case Study): A.Datum Corporation

Company Overview

A. Datum Corporation is a market research company that has 6,000 employees.

Physical Location

The company has a main office and two branch offices. The main office is located in Seattle. The branch offices are located in Detroit and New York. The main office has 5,000 users. The Detroit office has 900 users. The New York office has 100 users. Remote users frequently work from locations that only allow Internet access over ports 80 and 443. The remote users frequently work from client computers that are not joined to the domain.

Existing Environment

Network Infrastructure

The network has the following servers:

- An enterprise certification authority (CA)
- A DHCP server has that the following DHCP options:
 - * 003 Router
 - * 006 DNS Servers
 - * 015 DNS Domain Name
- A Network Time Protocol (NTP) server that is configured to use the User Datagram Protocol (UDP)
- A server in the main office that runs Microsoft Office Communications Server 2007

The network has the following configuration:

- All client computers run Microsoft Office Communicator 2007.
- All Internet-accessible servers are located in a perimeter network.
- Microsoft Forefront Threat Management Gateway (TMG) is used to publish internal Web sites for customers.
- All servers that have Office Communications Server installed run Windows Server 2003 Service Pack 2 (SP2).

Telephony Infrastructure

The telephony infrastructure is configured as shown in the exhibit.

Requirements

Business Goals

A. Datum has the following business goals:

- Minimize software costs.
- Minimize hardware costs.
- Minimize the amount of administrative effort required to deploy new technology solutions.

Planned Changes

A. Datum plans to migrate to Lync Server 2010 and implement the following changes:

- Enable Enterprise Voice for all internal users and remote users.
- In the main office, deploy devices that run Microsoft Lync 2010 Phone Edition.
- Enable IM, presence, and conferencing with a federated partner company named Contoso, Ltd.
- Create a Lync site for each office.
- Add the primary data center and the secondary data center to the Seattle Lync site.

Technical Requirements

- A. Datum must meet the following technical requirements:
- The number of public IP addresses must be minimized.
- The main office must support 1,000 concurrent PSTN calls.
- Lync services must be available to remote users over TCP port 443.
- Remote users must be able to participate in conferences and make Enterprise Voice calls.

▪ Telephony Requirements

The telephony infrastructure must meet the requirements shown in the following table.

Role	Call type	Calling feature
Managers	<ul style="list-style-type: none">▪ Local▪ National▪ International	<ul style="list-style-type: none">▪ Team call▪ Delegation▪ Call transfer▪ Call forwarding▪ Bandwidth policy override
Employees	<ul style="list-style-type: none">▪ Local▪ National	<ul style="list-style-type: none">▪ Team call▪ Delegation▪ Call transfer▪ Call forwarding▪ Bandwidth policy override
Call Center Technicians	<ul style="list-style-type: none">▪ Local	<ul style="list-style-type: none">▪ Team call▪ Delegation▪ Call transfer▪ Call forwarding▪ Bandwidth policy override

Each office will contain users who are assigned the Manager role and the Employees role.

Security Requirements

A. Datum must meet the following security requirements:

- Federation must only be allowed with Contoso.
- Lync-related traffic must not be routed over VPN connections

Availability Requirements

If a data center fails, all users in the main office must be able to perform the following tasks:

- Create a conference.
- Place calls to the PSTN.
- View the presence status of all users in the Seattle office.

If a WAN link fails, users in the Detroit office must be able to perform the following tasks:

- Create a conference.
- Place calls to the PSTN.
- View the presence status of all users in the Detroit office.

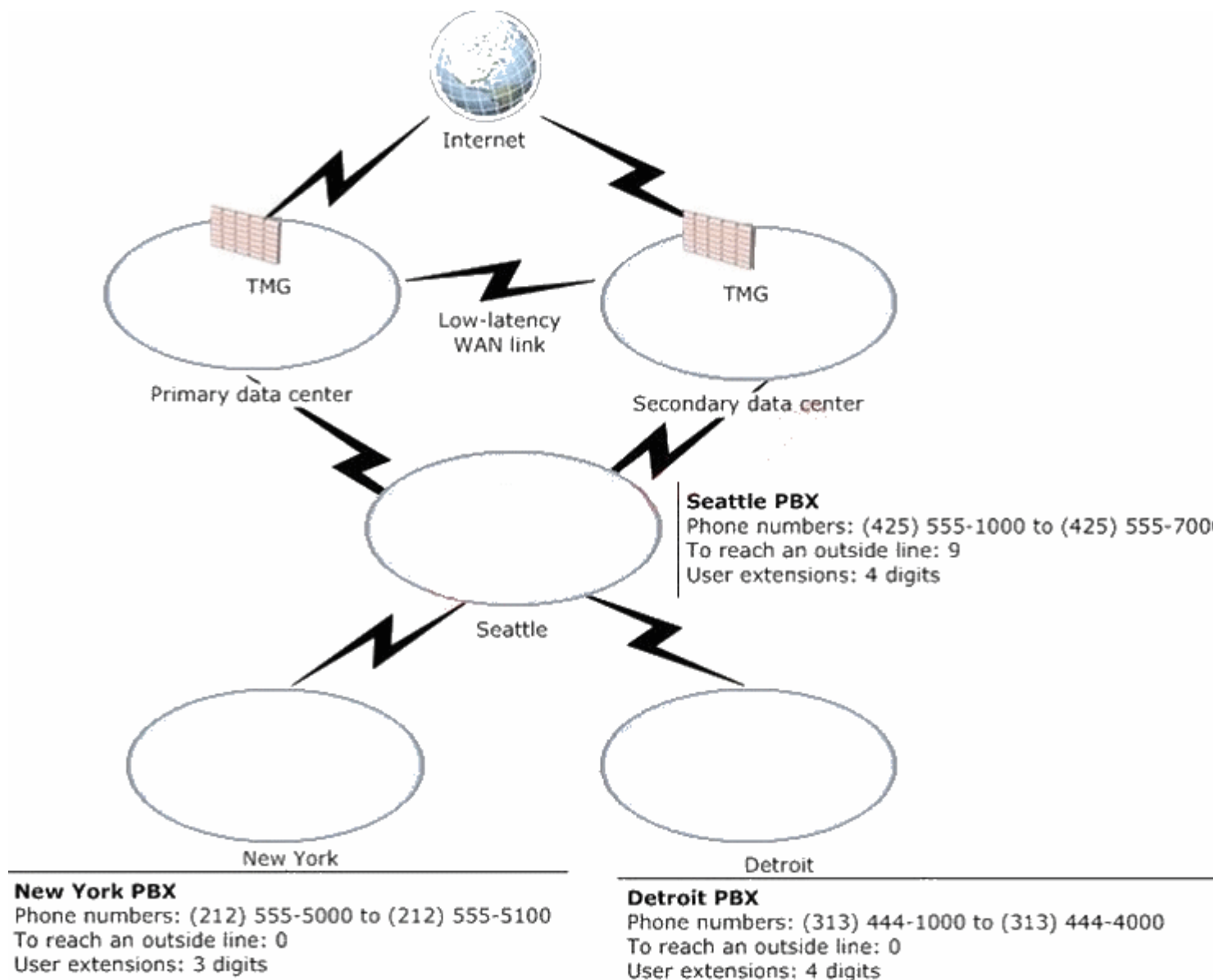
Reference Data

The typical bandwidth utilization for various codecs is listed in the following table.

Codec	Bandwidth
G.711	59.8Kbps
G.722	42.8 Kbps
RT Audio (8 KHz)	25.9 Kbps
RT Audio (16 KHz)	34.8 Kbps

A T1 interface supports 23 concurrent calls

Exhibit:



- A. Deploy four gateways and a single Mediation pool that contains two servers.
- B. Deploy six gateways and a single Mediation pool that contains six servers.
- C. Deploy four gateways and two Mediation pools that each contains a single server.
- D. Deploy six gateways and a single Mediation pool that contains two servers.

Correct Answer: D

Section: (none)

Explanation

Explanation/Reference:

ok. this.

$5 < 1000 \text{ calls} / 8 \text{ controllers} / 23 \text{ time slots} < 6 \text{ gw}$

6gw

Mediation pool with 2 servers to satisfy availability requirement

QUESTION 2

ok.

Click the Case Study button to review the scenario.
Then click the Exhibit tab to see the exhibit.



<http://www.gratisexam.com/>

You need to recommend a certificate for the external interface of the Edge pool.

Which certificate should you recommend?

Case Study Title (Case Study):
A.Datum Corporation

Company Overview

A. Datum Corporation is a market research company that has 6,000 employees.

Physical Location

The company has a main office and two branch offices. The main office is located in Seattle. The branch offices are located in Detroit and New York. The main office has 5,000 users. The Detroit office has 900 users. The New York office has 100 users. Remote users frequently work from locations that only allow Internet access over ports 80 and 443. The remote users frequently work from client computers that are not joined to the domain.

Existing Environment

Network Infrastructure

The network has the following servers:

- An enterprise certification authority (CA)
- A DHCP server has that the following DHCP options:
 - * 003 Router
 - * 006 DNS Servers
 - * 015 DNS Domain Name
- A Network Time Protocol (NTP) server that is configured to use the User Datagram Protocol (UDP)
- A server in the main office that runs Microsoft Office Communications Server 2007

The network has the following configuration:

- All client computers run Microsoft Office Communicator 2007.
- All Internet-accessible servers are located in a perimeter network.
- Microsoft Forefront Threat Management Gateway (TMG) is used to publish internal Web sites for customers.
- All servers that have Office Communications Server installed run Windows Server 2003 Service Pack 2 (SP2).

Telephony Infrastructure

The telephony infrastructure is configured as shown in the exhibit.

Requirements

Business Goals

A. Datum has the following business goals:

- Minimize software costs.
- Minimize hardware costs.
- Minimize the amount of administrative effort required to deploy new technology solutions.

Planned Changes

A. Datum plans to migrate to Lync Server 2010 and implement the following changes:

- Enable Enterprise Voice for all internal users and remote users.
- In the main office, deploy devices that run Microsoft Lync 2010 Phone Edition.
- Enable IM, presence, and conferencing with a federated partner company named Contoso, Ltd.
- Create a Lync site for each office.
- Add the primary data center and the secondary data center to the Seattle Lync site.

Technical Requirements

- A. Datum must meet the following technical requirements:
- The number of public IP addresses must be minimized.
- The main office must support 1,000 concurrent PSTN calls.
- Lync services must be available to remote users over TCP port 443.
- Remote users must be able to participate in conferences and make Enterprise Voice calls.

▪ Telephony Requirements

The telephony infrastructure must meet the requirements shown in the following table.

Role	Call type	Calling feature
Managers	<ul style="list-style-type: none">▪ Local▪ National▪ International	<ul style="list-style-type: none">▪ Team call▪ Delegation▪ Call transfer▪ Call forwarding▪ Bandwidth policy override
Employees	<ul style="list-style-type: none">▪ Local▪ National	<ul style="list-style-type: none">▪ Team call▪ Delegation▪ Call transfer▪ Call forwarding▪ Bandwidth policy override
Call Center Technicians	<ul style="list-style-type: none">▪ Local	<ul style="list-style-type: none">▪ Team call▪ Delegation▪ Call transfer▪ Call forwarding▪ Bandwidth policy override

Each office will contain users who are assigned the Manager role and the Employees role.

Security Requirements

A. Datum must meet the following security requirements:

- Federation must only be allowed with Contoso.
- Lync-related traffic must not be routed over VPN connections

Availability Requirements

If a data center fails, all users in the main office must be able to perform the following tasks:

- Create a conference.
- Place calls to the PSTN.
- View the presence status of all users in the Seattle office.

If a WAN link fails, users in the Detroit office must be able to perform the following tasks:

- Create a conference.
- Place calls to the PSTN.
- View the presence status of all users in the Detroit office.

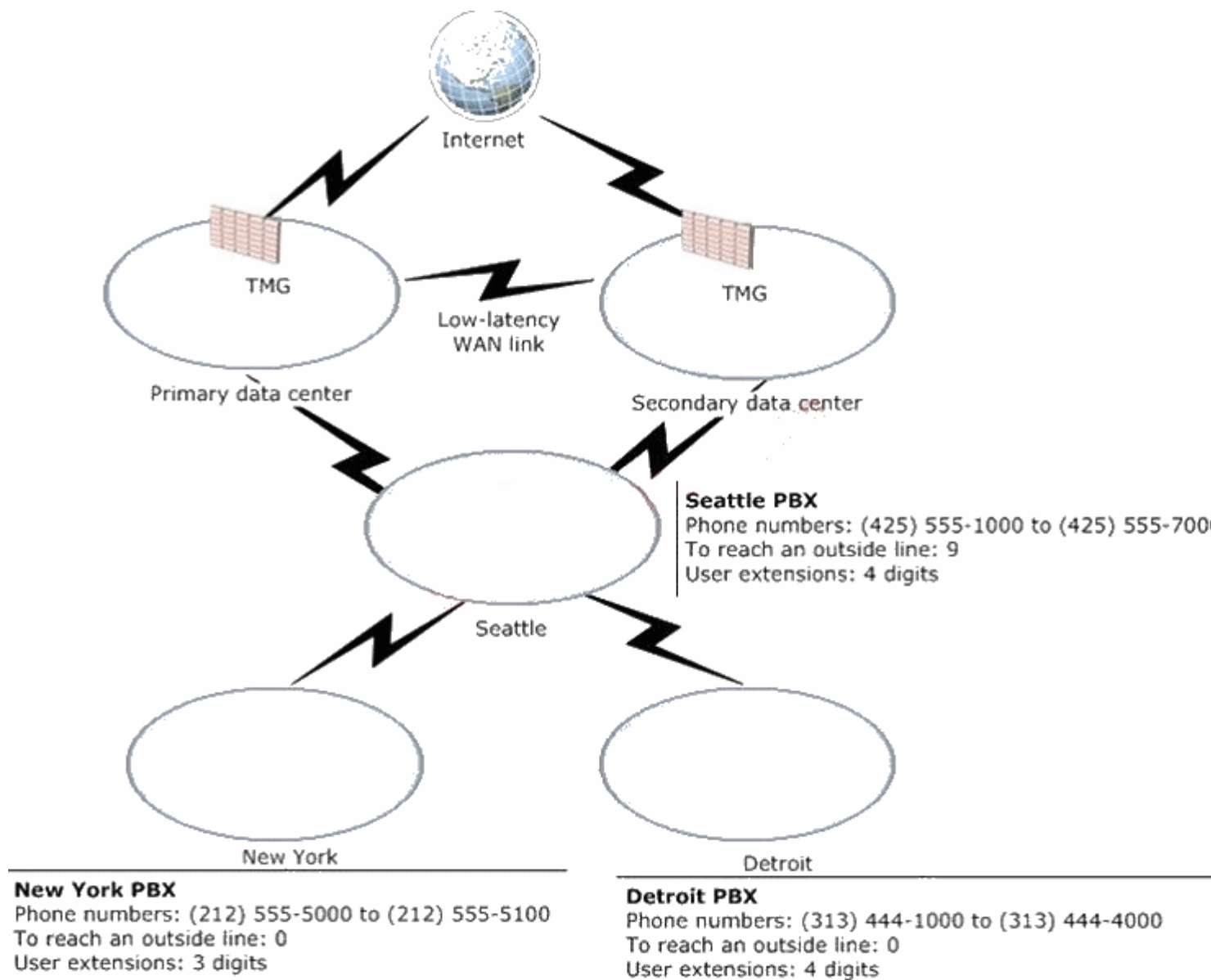
Reference Data

The typical bandwidth utilization for various codecs is listed in the following table.

Codec	Bandwidth
G.711	59.8Kbps
G.722	42.8 Kbps
RT Audio (8 KHz)	25.9 Kbps
RT Audio (16 KHz)	34.8 Kbps

A T1 interface supports 23 concurrent calls

Exhibit:



- A. a certificate that contains one FQDN from the internal CA
- B. a certificate that contains a wildcard from the internal CA
- C. a certificate that contains multiple FQDNs from a trusted third-party CA
- D. a certificate that contains a wildcard from a trusted third-party CA

Correct Answer: C

Section: (none)

Explanation

Explanation/Reference:

ok. 99%

<http://technet.microsoft.com/en-us/library/gg398920.aspx>

QUESTION 3

ok.

Click the Case Study button to review the scenario.

Then click the Exhibit tab to see the exhibit.

You need to recommend an Enterprise Voice solution that meets the company's telephony requirements.

What should you include in the recommendation?

Case Study Title (Case Study):

A.Datum Corporation

Company Overview

A. Datum Corporation is a market research company that has 6,000 employees.

Physical Location

The company has a main office and two branch offices. The main office is located in Seattle. The branch offices are located in Detroit and New York. The main office has 5,000 users. The Detroit office has 900 users. The New York office has 100 users. Remote users frequently work from locations that only allow Internet access over ports 80 and 443. The remote users frequently work from client computers that are not joined to the domain.

Existing Environment

Network Infrastructure

The network has the following servers:

- An enterprise certification authority (CA)
- A DHCP server has that the following DHCP options:
 - * 003 Router
 - * 006 DNS Servers
 - * 015 DNS Domain Name
- A Network Time Protocol (NTP) server that is configured to use the User Datagram Protocol (UDP)
- A server in the main office that runs Microsoft Office Communications Server 2007

The network has the following configuration:

- All client computers run Microsoft Office Communicator 2007.
- All Internet-accessible servers are located in a perimeter network.
- Microsoft Forefront Threat Management Gateway (TMG) is used to publish internal Web sites for customers.
- All servers that have Office Communications Server installed run Windows Server 2003 Service Pack 2 (SP2).

Telephony Infrastructure

The telephony infrastructure is configured as shown in the exhibit.

Requirements

Business Goals

A. Datum has the following business goals:

- Minimize software costs.
- Minimize hardware costs.
- Minimize the amount of administrative effort required to deploy new technology solutions.

Planned Changes

A. Datum plans to migrate to Lync Server 2010 and implement the following changes:

- Enable Enterprise Voice for all internal users and remote users.

- In the main office, deploy devices that run Microsoft Lync 2010 Phone Edition.
- Enable IM, presence, and conferencing with a federated partner company named Contoso, Ltd.
- Create a Lync site for each office.
- Add the primary data center and the secondary data center to the Seattle Lync site.

Technical Requirements

- A. Datum must meet the following technical requirements:
 - The number of public IP addresses must be minimized.
 - The main office must support 1,000 concurrent PSTN calls.
 - Lync services must be available to remote users over TCP port 443.
 - Remote users must be able to participate in conferences and make Enterprise Voice calls.

▪ Telephony Requirements

The telephony infrastructure must meet the requirements shown in the following table.

Role	Call type	Calling feature
Managers	<ul style="list-style-type: none"> ▪ Local ▪ National ▪ International 	<ul style="list-style-type: none"> ▪ Team call ▪ Delegation ▪ Call transfer ▪ Call forwarding ▪ Bandwidth policy override
Employees	<ul style="list-style-type: none"> ▪ Local ▪ National 	<ul style="list-style-type: none"> ▪ Team call ▪ Delegation ▪ Call transfer ▪ Call forwarding ▪ Bandwidth policy override
Call Center Technicians	<ul style="list-style-type: none"> ▪ Local 	<ul style="list-style-type: none"> ▪ Team call ▪ Delegation ▪ Call transfer ▪ Call forwarding ▪ Bandwidth policy override

Each office will contain users who are assigned the Manager role and the Employees role.

Security Requirements

- A. Datum must meet the following security requirements:
- Federation must only be allowed with Contoso.
 - Lync-related traffic must not be routed over VPN connections

Availability Requirements

If a data center fails, all users in the main office must be able to perform the following tasks:

- Create a conference.
- Place calls to the PSTN.
- View the presence status of all users in the Seattle office.

If a WAN link fails, users in the Detroit office must be able to perform the following tasks:

- Create a conference.
- Place calls to the PSTN.
- View the presence status of all users in the Detroit office.

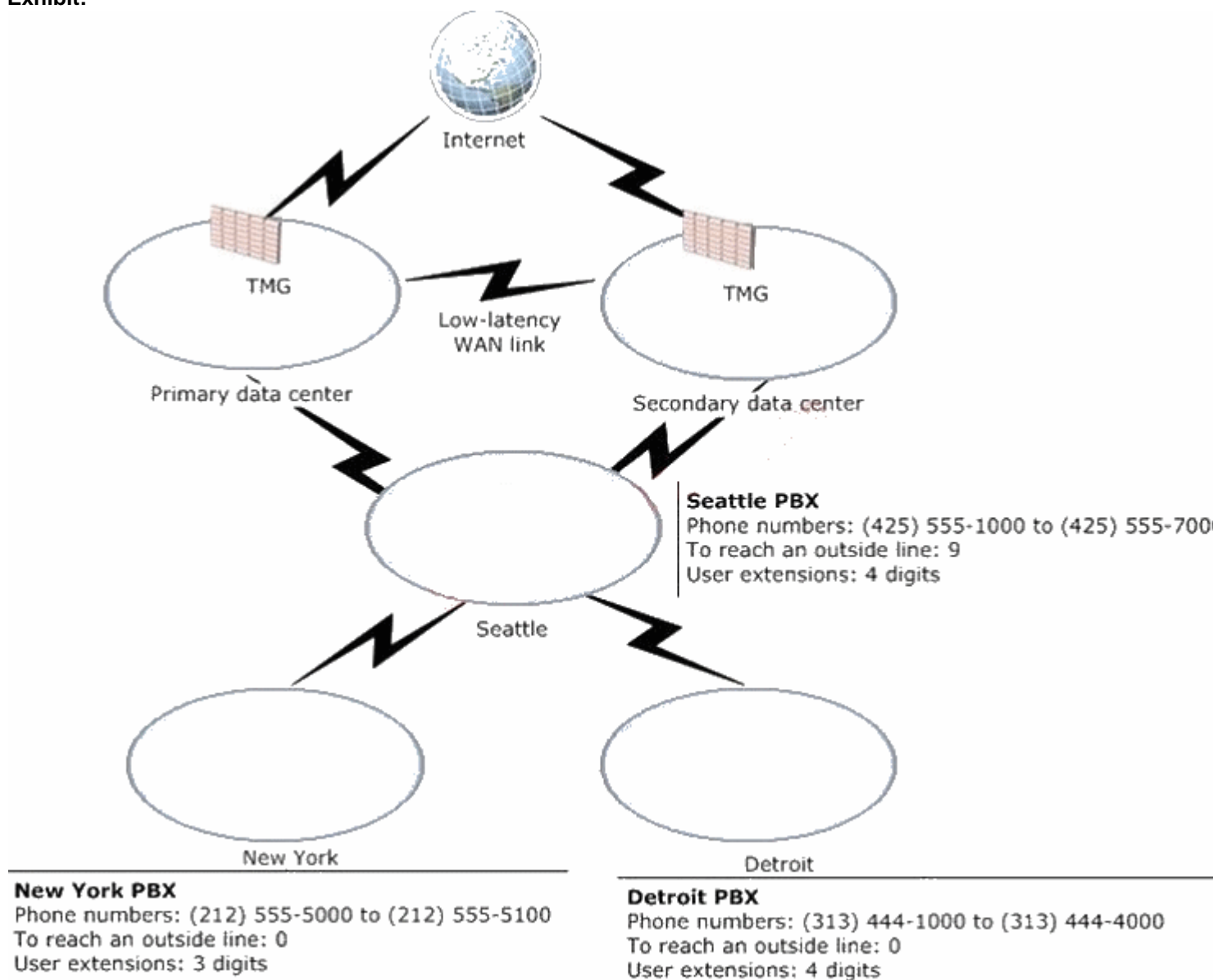
Reference Data

The typical bandwidth utilization for various codecs is listed in the following table.

Codec	Bandwidth
G.711	59.8Kbps
G.722	42.8 Kbps
RT Audio (8 KHz)	25.9 Kbps
RT Audio (16 KHz)	34.8 Kbps

A T1 interface supports 23 concurrent calls

Exhibit:



- Create three User Voice Policies. In the User Voice Policies, configure the calling features and the call types.
- Create three Site Voice Policies. In the Site Voice Policies, configure the calling features and the call types.
- Create three User Voice Policies and one Site Voice Policy. In the User Voice Policies, configure the calling features. In the Site Voice Policy, configure the call types.

- D. Create three User Voice Policies and one Site Voice Policy. In the User Voice Policies, configure the call types. In the Site Voice Policy, configure the calling features.

Correct Answer: D

Section: (none)

Explanation

Explanation/Reference:

ok.

QUESTION 4

ok.

Click the Case Study button to review the scenario.

Then click the Exhibit tab to see the exhibit.

You need to recommend a backup solution for the configuration store of the Lync Server 2010 deployment.

Which database should you include in the recommendation?

Case Study Title (Case Study):

A.Datum Corporation

Company Overview

A. Datum Corporation is a market research company that has 6,000 employees.

Physical Location

The company has a main office and two branch offices. The main office is located in Seattle. The branch offices are located in Detroit and New York. The main office has 5,000 users. The Detroit office has 900 users. The New York office has 100 users. Remote users frequently work from locations that only allow Internet access over ports 80 and 443. The remote users frequently work from client computers that are not joined to the domain.

Existing Environment

Network Infrastructure

The network has the following servers:

- An enterprise certification authority (CA)
- A DHCP server has that the following DHCP options:
 - * 003 Router
 - * 006 DNS Servers
 - * 015 DNS Domain Name
- A Network Time Protocol (NTP) server that is configured to use the User Datagram Protocol (UDP)
- A server in the main office that runs Microsoft Office Communications Server 2007

The network has the following configuration:

- All client computers run Microsoft Office Communicator 2007.
- All Internet-accessible servers are located in a perimeter network.
- Microsoft Forefront Threat Management Gateway (TMG) is used to publish internal Web sites for customers.
- All servers that have Office Communications Server installed run Windows Server 2003 Service Pack 2 (SP2).

Telephony Infrastructure

The telephony infrastructure is configured as shown in the exhibit.

Requirements

Business Goals

A. Datum has the following business goals:

- Minimize software costs.
- Minimize hardware costs.
- Minimize the amount of administrative effort required to deploy new technology solutions.

Planned Changes

A. Datum plans to migrate to Lync Server 2010 and implement the following changes:

- Enable Enterprise Voice for all internal users and remote users.
- In the main office, deploy devices that run Microsoft Lync 2010 Phone Edition.
- Enable IM, presence, and conferencing with a federated partner company named Contoso, Ltd.
- Create a Lync site for each office.
- Add the primary data center and the secondary data center to the Seattle Lync site.

Technical Requirements

- A. Datum must meet the following technical requirements:
- The number of public IP addresses must be minimized.
- The main office must support 1,000 concurrent PSTN calls.
- Lync services must be available to remote users over TCP port 443.
- Remote users must be able to participate in conferences and make Enterprise Voice calls.

▪ Telephony Requirements

The telephony infrastructure must meet the requirements shown in the following table.

Role	Call type	Calling feature
Managers	<ul style="list-style-type: none">▪ Local▪ National▪ International	<ul style="list-style-type: none">▪ Team call▪ Delegation▪ Call transfer▪ Call forwarding▪ Bandwidth policy override
Employees	<ul style="list-style-type: none">▪ Local▪ National	<ul style="list-style-type: none">▪ Team call▪ Delegation▪ Call transfer▪ Call forwarding▪ Bandwidth policy override
Call Center Technicians	<ul style="list-style-type: none">▪ Local	<ul style="list-style-type: none">▪ Team call▪ Delegation▪ Call transfer▪ Call forwarding▪ Bandwidth policy override

Each office will contain users who are assigned the Manager role and the Employees role.

Security Requirements

A. Datum must meet the following security requirements:

- Federation must only be allowed with Contoso.
- Lync-related traffic must not be routed over VPN connections

Availability Requirements

If a data center fails, all users in the main office must be able to perform the following tasks:

- Create a conference.
- Place calls to the PSTN.
- View the presence status of all users in the Seattle office.

If a WAN link fails, users in the Detroit office must be able to perform the following tasks:

- Create a conference.
- Place calls to the PSTN.
- View the presence status of all users in the Detroit office.

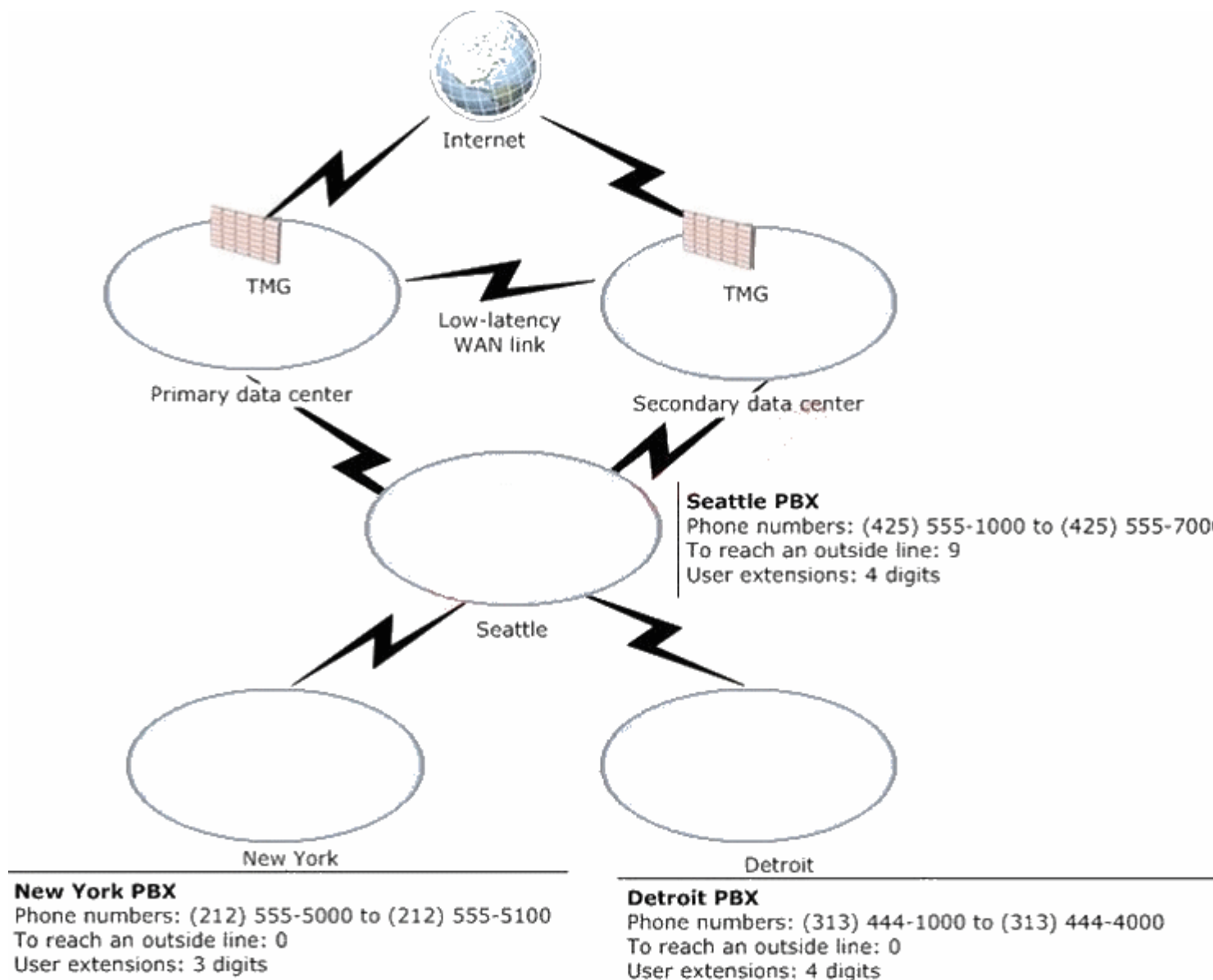
Reference Data

The typical bandwidth utilization for various codecs is listed in the following table.

Codec	Bandwidth
G.711	59.8Kbps
G.722	42.8 Kbps
RT Audio (8 KHz)	25.9 Kbps
RT Audio (16 KHz)	34.8 Kbps

A T1 interface supports 23 concurrent calls

Exhibit:



- A. RTCLocal\rtc
- B. RTCLocal\rtcdyn
- C. RTC\xds
- D. RTC\rtc

Correct Answer: C

Section: (none)

Explanation

Explanation/Reference:

ok.

The repository is implemented as an SQL database (xds). It is recommended to install CMS on an Enterprise Edition (EE) pool so that it benefits from the high availability built into the Enterprise Edition. In such a configuration the master xds database is located in the same SQL Server instance as the backend databases, typically RTC. If CMS is installed on a Standard Edition (SE) pool the master xds database will be located in the normal SQL Express instance called RTC.

(<http://blogs.technet.com/b/jenstr/archive/2010/10/13/what-is-central-management-store-cms.aspx>,
<http://lyncinsider.com/conferencing/backup-and-restore-lync-server-20-tasks-every-lync-administrator-must-know/>)

QUESTION 5

Click the Case Study button to review the scenario.
Then click the Exhibit tab to see the exhibit.

You need to recommend changes to the existing environment to support the planned Lync 2010 Phone Edition devices.

What should you include in the recommendation?

Case Study Title (Case Study): A.Datum Corporation

Company Overview

A. Datum Corporation is a market research company that has 6,000 employees.

Physical Location

The company has a main office and two branch offices. The main office is located in Seattle. The branch offices are located in Detroit and New York. The main office has 5,000 users. The Detroit office has 900 users. The New York office has 100 users. Remote users frequently work from locations that only allow Internet access over ports 80 and 443. The remote users frequently work from client computers that are not joined to the domain.

Existing Environment

Network Infrastructure

The network has the following servers:

- An enterprise certification authority (CA)
- A DHCP server has that the following DHCP options:
 - * 003 Router
 - * 006 DNS Servers
 - * 015 DNS Domain Name
- A Network Time Protocol (NTP) server that is configured to use the User Datagram Protocol (UDP)
- A server in the main office that runs Microsoft Office Communications Server 2007

The network has the following configuration:

- All client computers run Microsoft Office Communicator 2007.
- All Internet-accessible servers are located in a perimeter network.
- Microsoft Forefront Threat Management Gateway (TMG) is used to publish internal Web sites for customers.
- All servers that have Office Communications Server installed run Windows Server 2003 Service Pack 2 (SP2).

Telephony Infrastructure

The telephony infrastructure is configured as shown in the exhibit.

Requirements

Business Goals

- A. Datum has the following business goals:
- Minimize software costs.

- Minimize hardware costs.
- Minimize the amount of administrative effort required to deploy new technology solutions.

Planned Changes

A. Datum plans to migrate to Lync Server 2010 and implement the following changes:

- Enable Enterprise Voice for all internal users and remote users.
- In the main office, deploy devices that run Microsoft Lync 2010 Phone Edition.
- Enable IM, presence, and conferencing with a federated partner company named Contoso, Ltd.
- Create a Lync site for each office.
- Add the primary data center and the secondary data center to the Seattle Lync site.

Technical Requirements

- A. Datum must meet the following technical requirements:
- The number of public IP addresses must be minimized.
- The main office must support 1,000 concurrent PSTN calls.
- Lync services must be available to remote users over TCP port 443.
- Remote users must be able to participate in conferences and make Enterprise Voice calls.

▪ Telephony Requirements

The telephony infrastructure must meet the requirements shown in the following table.

Role	Call type	Calling feature
Managers	<ul style="list-style-type: none"> ▪ Local ▪ National ▪ International 	<ul style="list-style-type: none"> ▪ Team call ▪ Delegation ▪ Call transfer ▪ Call forwarding ▪ Bandwidth policy override
Employees	<ul style="list-style-type: none"> ▪ Local ▪ National 	<ul style="list-style-type: none"> ▪ Team call ▪ Delegation ▪ Call transfer ▪ Call forwarding ▪ Bandwidth policy override
Call Center Technicians	<ul style="list-style-type: none"> ▪ Local 	<ul style="list-style-type: none"> ▪ Team call ▪ Delegation ▪ Call transfer ▪ Call forwarding ▪ Bandwidth policy override

Each office will contain users who are assigned the Manager role and the Employees role.

Security Requirements

A. Datum must meet the following security requirements:

- Federation must only be allowed with Contoso.
- Lync-related traffic must not be routed over VPN connections

Availability Requirements

If a data center fails, all users in the main office must be able to perform the following tasks:

- Create a conference.
- Place calls to the PSTN.
- View the presence status of all users in the Seattle office.

If a WAN link fails, users in the Detroit office must be able to perform the following tasks:

- Create a conference.

- Place calls to the PSTN.
- View the presence status of all users in the Detroit office.

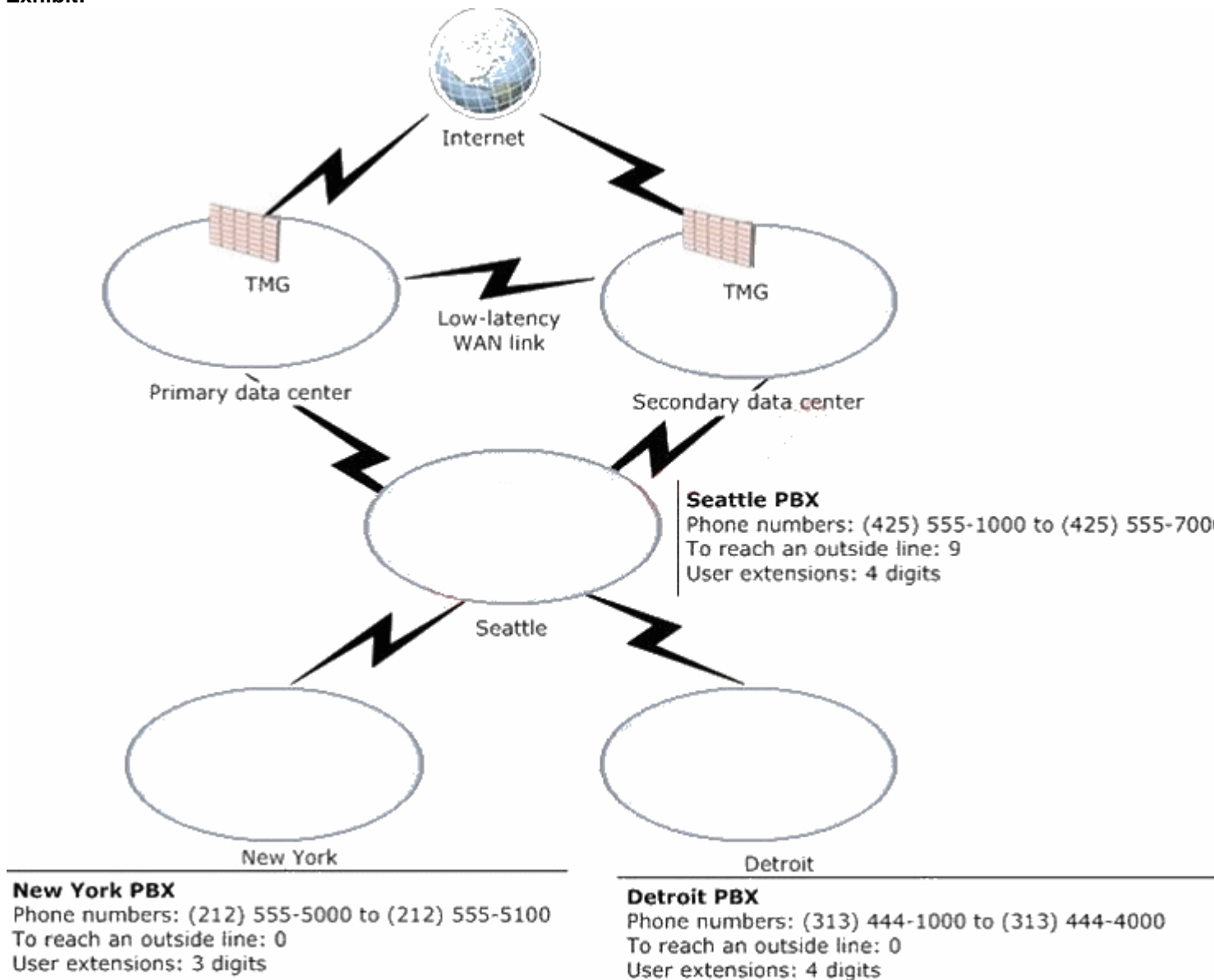
Reference Data

The typical bandwidth utilization for various codecs is listed in the following table.

Codec	Bandwidth
G.711	59.8Kbps
G.722	42.8 Kbps
RT Audio (8 KHz)	25.9 Kbps
RT Audio (16 KHz)	34.8 Kbps

A T1 interface supports 23 concurrent calls

Exhibit:



- A. Modifications to the DHCP options
- B. Modifications to the NTP server configuration
- C. Windows Server Update Services (WSUS)
- D. Kerberos authentication on the Front End Servers

Correct Answer: A

Section: (none)

Explanation

Explanation/Reference:

ok.

add DNS options to DHCP (option 120 [registrar])

[http://technet.microsoft.com/en-us/library/gg398088\(v=ocs.14\).aspx](http://technet.microsoft.com/en-us/library/gg398088(v=ocs.14).aspx)

QUESTION 6

Click the Case Study button to review the scenario.

Then click the Exhibit tab to see the exhibit.

You need to recommend a Lync Server 2010 deployment solution that meets the company's availability requirements for the Detroit office.

What should you recommend?

Case Study Title (Case Study):

A.Datum Corporation

Company Overview

A. Datum Corporation is a market research company that has 6,000 employees.

Physical Location

The company has a main office and two branch offices. The main office is located in Seattle. The branch offices are located in Detroit and New York. The main office has 5,000 users. The Detroit office has 900 users. The New York office has 100 users. Remote users frequently work from locations that only allow Internet access over ports 80 and 443. The remote users frequently work from client computers that are not joined to the domain.

Existing Environment

Network Infrastructure

The network has the following servers:

- An enterprise certification authority (CA)
- A DHCP server has that the following DHCP options:
 - * 003 Router
 - * 006 DNS Servers
 - * 015 DNS Domain Name
- A Network Time Protocol (NTP) server that is configured to use the User Datagram Protocol (UDP)
- A server in the main office that runs Microsoft Office Communications Server 2007

The network has the following configuration:

- All client computers run Microsoft Office Communicator 2007.
- All Internet-accessible servers are located in a perimeter network.
- Microsoft Forefront Threat Management Gateway (TMG) is used to publish internal Web sites for customers.

- All servers that have Office Communications Server installed run Windows Server 2003 Service Pack 2 (SP2).

Telephony Infrastructure

The telephony infrastructure is configured as shown in the exhibit.

Requirements

Business Goals

A. Datum has the following business goals:

- Minimize software costs.
- Minimize hardware costs.
- Minimize the amount of administrative effort required to deploy new technology solutions.

Planned Changes

A. Datum plans to migrate to Lync Server 2010 and implement the following changes:

- Enable Enterprise Voice for all internal users and remote users.
- In the main office, deploy devices that run Microsoft Lync 2010 Phone Edition.
- Enable IM, presence, and conferencing with a federated partner company named Contoso, Ltd.
- Create a Lync site for each office.
- Add the primary data center and the secondary data center to the Seattle Lync site.

Technical Requirements

- A. Datum must meet the following technical requirements:
- The number of public IP addresses must be minimized.
- The main office must support 1,000 concurrent PSTN calls.
- Lync services must be available to remote users over TCP port 443.
- Remote users must be able to participate in conferences and make Enterprise Voice calls.

▪ Telephony Requirements

The telephony infrastructure must meet the requirements shown in the following table.

Role	Call type	Calling feature
Managers	<ul style="list-style-type: none"> ▪ Local ▪ National ▪ International 	<ul style="list-style-type: none"> ▪ Team call ▪ Delegation ▪ Call transfer ▪ Call forwarding ▪ Bandwidth policy override
Employees	<ul style="list-style-type: none"> ▪ Local ▪ National 	<ul style="list-style-type: none"> ▪ Team call ▪ Delegation ▪ Call transfer ▪ Call forwarding ▪ Bandwidth policy override
Call Center Technicians	<ul style="list-style-type: none"> ▪ Local 	<ul style="list-style-type: none"> ▪ Team call ▪ Delegation ▪ Call transfer ▪ Call forwarding ▪ Bandwidth policy override

Each office will contain users who are assigned the Manager role and the Employees role.

Security Requirements

- A. Datum must meet the following security requirements:
- Federation must only be allowed with Contoso.
 - Lync-related traffic must not be routed over VPN connections

Availability Requirements

If a data center fails, all users in the main office must be able to perform the following tasks:

- Create a conference.
- Place calls to the PSTN.
- View the presence status of all users in the Seattle office.

If a WAN link fails, users in the Detroit office must be able to perform the following tasks:

- Create a conference.
- Place calls to the PSTN.
- View the presence status of all users in the Detroit office.

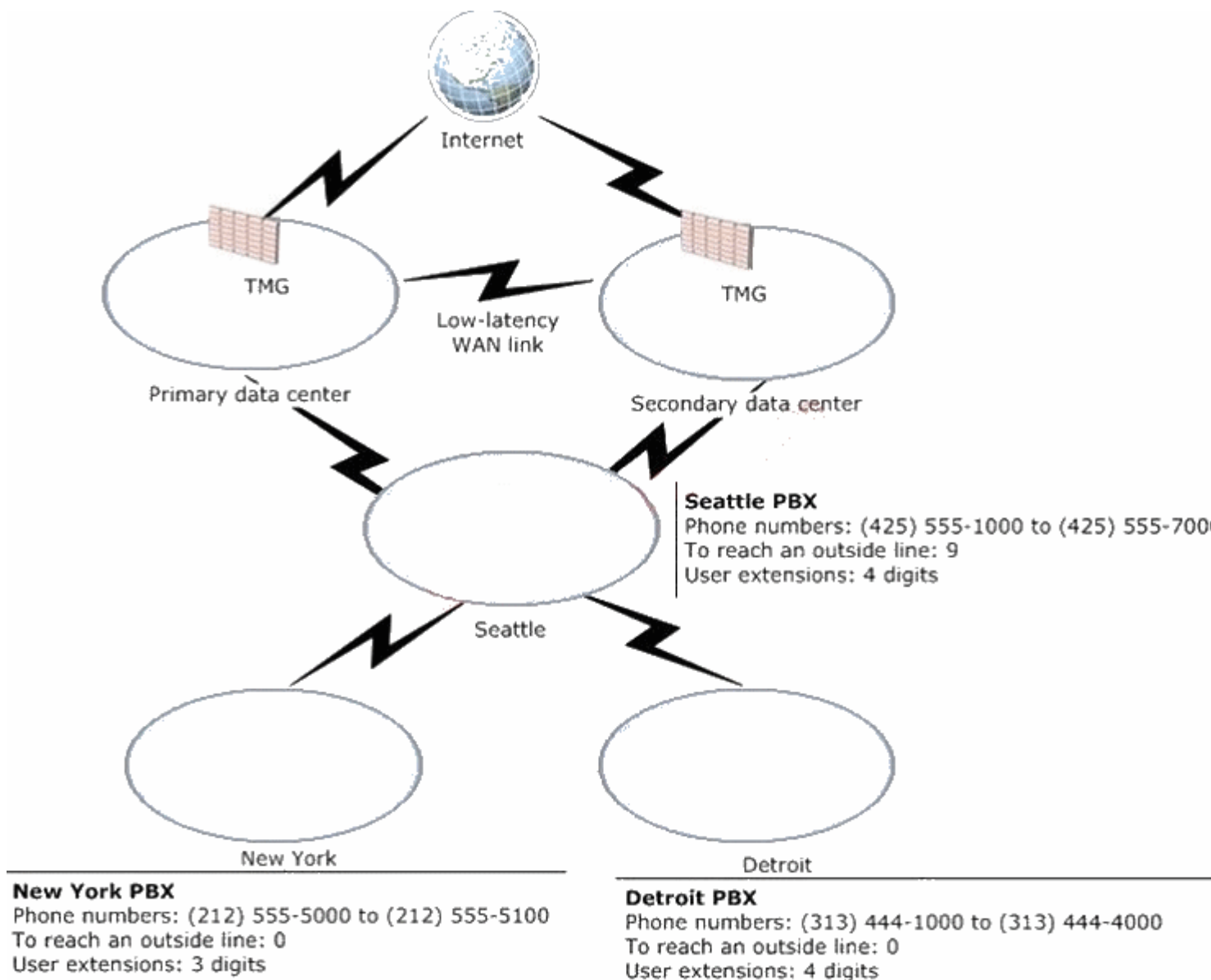
Reference Data

The typical bandwidth utilization for various codecs is listed in the following table.

Codec	Bandwidth
G.711	59.8Kbps
G.722	42.8 Kbps
RT Audio (8 KHz)	25.9 Kbps
RT Audio (16 KHz)	34.8 Kbps

A T1 interface supports 23 concurrent calls

Exhibit:



- A. Deploy a Standard Edition server and a PSTN gateway in the Detroit office.
 Deploy an Enterprise Edition server and a PSTN gateway in the Seattle data center.
 Assign the Standard Edition server as the primary registrar.
 Assign the Enterprise Edition server as the backup registrar.
- B. Deploy a Standard Edition server and a PSTN gateway in the Seattle data centers.
 Deploy a Survivable Branch Server in the Detroit office.
 Assign the Survivable Branch Server as the primary registrar.
 Assign the Standard Edition server as the backup registrar.
- C. Deploy an Enterprise Edition server and a PSTN gateway in the Seattle data centers.
 Deploy a Standard Edition server in the Detroit office.
 Assign the Standard Edition server as the primary registrar.
 Assign the Enterprise Edition server as the backup registrar.
- D. Deploy a Standard Edition server and a PSTN gateway in the Seattle data centers.
 Deploy a Survivable Branch Appliance (SBA) in the Detroit office.
 Assign the SBA as the primary registrar.
 Assign the Standard Edition server as the backup registrar.

Correct Answer: A

Section: (none)

Explanation

Explanation/Reference:

change my opinion to A.

it was B.

in test4actual it's A.

in AboAdel it's A

QUESTION 7

Click the Case Study button to review the scenario.

Then click the Exhibit tab to see the exhibit.

You need to recommend an Enterprise Voice solution for the New York office.

What should you include in the recommendation?

Case Study Title (Case Study):

A.Datum Corporation

Company Overview

A. Datum Corporation is a market research company that has 6,000 employees.

Physical Location

The company has a main office and two branch offices. The main office is located in Seattle. The branch offices are located in Detroit and New York. The main office has 5,000 users. The Detroit office has 900 users. The New York office has 100 users. Remote users frequently work from locations that only allow Internet access over ports 80 and 443. The remote users frequently work from client computers that are not joined to the domain.

Existing Environment

Network Infrastructure

The network has the following servers:

- An enterprise certification authority (CA)
- A DHCP server has that the following DHCP options:
 - * 003 Router
 - * 006 DNS Servers
 - * 015 DNS Domain Name
- A Network Time Protocol (NTP) server that is configured to use the User Datagram Protocol (UDP)
- A server in the main office that runs Microsoft Office Communications Server 2007

The network has the following configuration:

- All client computers run Microsoft Office Communicator 2007.
- All Internet-accessible servers are located in a perimeter network.
- Microsoft Forefront Threat Management Gateway (TMG) is used to publish internal Web sites for customers.
- All servers that have Office Communications Server installed run Windows Server 2003 Service Pack 2 (SP2).

Telephony Infrastructure

The telephony infrastructure is configured as shown in the exhibit.

Requirements

Business Goals

A. Datum has the following business goals:

- Minimize software costs.
- Minimize hardware costs.
- Minimize the amount of administrative effort required to deploy new technology solutions.

Planned Changes

A. Datum plans to migrate to Lync Server 2010 and implement the following changes:

- Enable Enterprise Voice for all internal users and remote users.
- In the main office, deploy devices that run Microsoft Lync 2010 Phone Edition.
- Enable IM, presence, and conferencing with a federated partner company named Contoso, Ltd.
- Create a Lync site for each office.
- Add the primary data center and the secondary data center to the Seattle Lync site.

Technical Requirements

- A. Datum must meet the following technical requirements:
- The number of public IP addresses must be minimized.
- The main office must support 1,000 concurrent PSTN calls.
- Lync services must be available to remote users over TCP port 443.
- Remote users must be able to participate in conferences and make Enterprise Voice calls.

▪ Telephony Requirements

The telephony infrastructure must meet the requirements shown in the following table.

Role	Call type	Calling feature
Managers	<ul style="list-style-type: none">▪ Local▪ National▪ International	<ul style="list-style-type: none">▪ Team call▪ Delegation▪ Call transfer▪ Call forwarding▪ Bandwidth policy override
Employees	<ul style="list-style-type: none">▪ Local▪ National	<ul style="list-style-type: none">▪ Team call▪ Delegation▪ Call transfer▪ Call forwarding▪ Bandwidth policy override
Call Center Technicians	<ul style="list-style-type: none">▪ Local	<ul style="list-style-type: none">▪ Team call▪ Delegation▪ Call transfer▪ Call forwarding▪ Bandwidth policy override

Each office will contain users who are assigned the Manager role and the Employees role.

Security Requirements

A. Datum must meet the following security requirements:

- Federation must only be allowed with Contoso.
- Lync-related traffic must not be routed over VPN connections

Availability Requirements

If a data center fails, all users in the main office must be able to perform the following tasks:

- Create a conference.
- Place calls to the PSTN.
- View the presence status of all users in the Seattle office.

If a WAN link fails, users in the Detroit office must be able to perform the following tasks:

- Create a conference.
- Place calls to the PSTN.
- View the presence status of all users in the Detroit office.

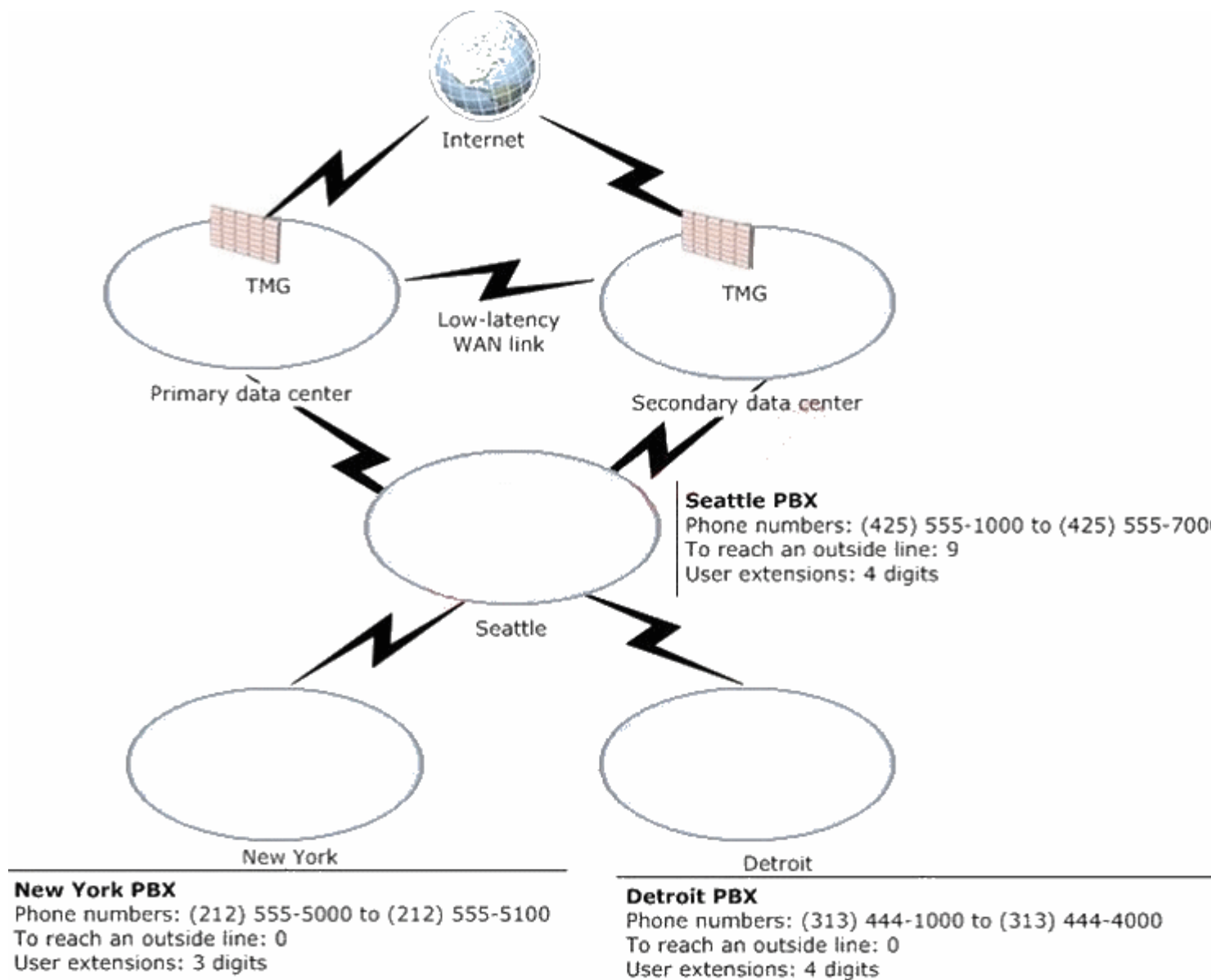
Reference Data

The typical bandwidth utilization for various codecs is listed in the following table.

Codec	Bandwidth
G.711	59.8Kbps
G.722	42.8 Kbps
RT Audio (8 KHz)	25.9 Kbps
RT Audio (16 KHz)	34.8 Kbps

A T1 interface supports 23 concurrent calls

Exhibit:



- A. a Response Group
- B. the Attendant Console
- C. a dial plan
- D. an IP-PBX gateway

Correct Answer: C

Section: (none)

Explanation

Explanation/Reference:

this.

It may be "dialplan" or "Attendant Console" (AC). AC is required for "Delegation".

QUESTION 8

ok.

Click the Case Study button to review the scenario.

Then click the Exhibit tab to see the exhibit.

You are evaluating the implementation of a SIP trunk in the main office to support the planned Lync Server 2010 deployment.

You need to calculate the minimum amount of bandwidth required for PSTN calls.

How much bandwidth is required on the network connection to the SIP trunk?

Case Study Title (Case Study):
A.Datum Corporation

Company Overview

A. Datum Corporation is a market research company that has 6,000 employees.

Physical Location

The company has a main office and two branch offices. The main office is located in Seattle. The branch offices are located in Detroit and New York. The main office has 5,000 users. The Detroit office has 900 users. The New York office has 100 users. Remote users frequently work from locations that only allow Internet access over ports 80 and 443. The remote users frequently work from client computers that are not joined to the domain.

Existing Environment

Network Infrastructure

The network has the following servers:

- An enterprise certification authority (CA)
- A DHCP server has that the following DHCP options:
 - * 003 Router
 - * 006 DNS Servers
 - * 015 DNS Domain Name
- A Network Time Protocol (NTP) server that is configured to use the User Datagram Protocol (UDP)
- A server in the main office that runs Microsoft Office Communications Server 2007

The network has the following configuration:

- All client computers run Microsoft Office Communicator 2007.
- All Internet-accessible servers are located in a perimeter network.
- Microsoft Forefront Threat Management Gateway (TMG) is used to publish internal Web sites for customers.
- All servers that have Office Communications Server installed run Windows Server 2003 Service Pack 2 (SP2).

Telephony Infrastructure

The telephony infrastructure is configured as shown in the exhibit.

Requirements

Business Goals

A. Datum has the following business goals:

- Minimize software costs.
- Minimize hardware costs.
- Minimize the amount of administrative effort required to deploy new technology solutions.

Planned Changes

- A. Datum plans to migrate to Lync Server 2010 and implement the following changes:
- Enable Enterprise Voice for all internal users and remote users.
 - In the main office, deploy devices that run Microsoft Lync 2010 Phone Edition.
 - Enable IM, presence, and conferencing with a federated partner company named Contoso, Ltd.
 - Create a Lync site for each office.
 - Add the primary data center and the secondary data center to the Seattle Lync site.

Technical Requirements

- A. Datum must meet the following technical requirements:
- The number of public IP addresses must be minimized.
- The main office must support 1,000 concurrent PSTN calls.
- Lync services must be available to remote users over TCP port 443.
- Remote users must be able to participate in conferences and make Enterprise Voice calls.

▪ Telephony Requirements

The telephony infrastructure must meet the requirements shown in the following table.

Role	Call type	Calling feature
Managers	<ul style="list-style-type: none">▪ Local▪ National▪ International	<ul style="list-style-type: none">▪ Team call▪ Delegation▪ Call transfer▪ Call forwarding▪ Bandwidth policy override
Employees	<ul style="list-style-type: none">▪ Local▪ National	<ul style="list-style-type: none">▪ Team call▪ Delegation▪ Call transfer▪ Call forwarding▪ Bandwidth policy override
Call Center Technicians	<ul style="list-style-type: none">▪ Local	<ul style="list-style-type: none">▪ Team call▪ Delegation▪ Call transfer▪ Call forwarding▪ Bandwidth policy override

Each office will contain users who are assigned the Manager role and the Employees role.

Security Requirements

- A. Datum must meet the following security requirements:
- Federation must only be allowed with Contoso.
 - Lync-related traffic must not be routed over VPN connections

Availability Requirements

If a data center fails, all users in the main office must be able to perform the following tasks:

- Create a conference.
- Place calls to the PSTN.
- View the presence status of all users in the Seattle office.

If a WAN link fails, users in the Detroit office must be able to perform the following tasks:

- Create a conference.
- Place calls to the PSTN.
- View the presence status of all users in the Detroit office.

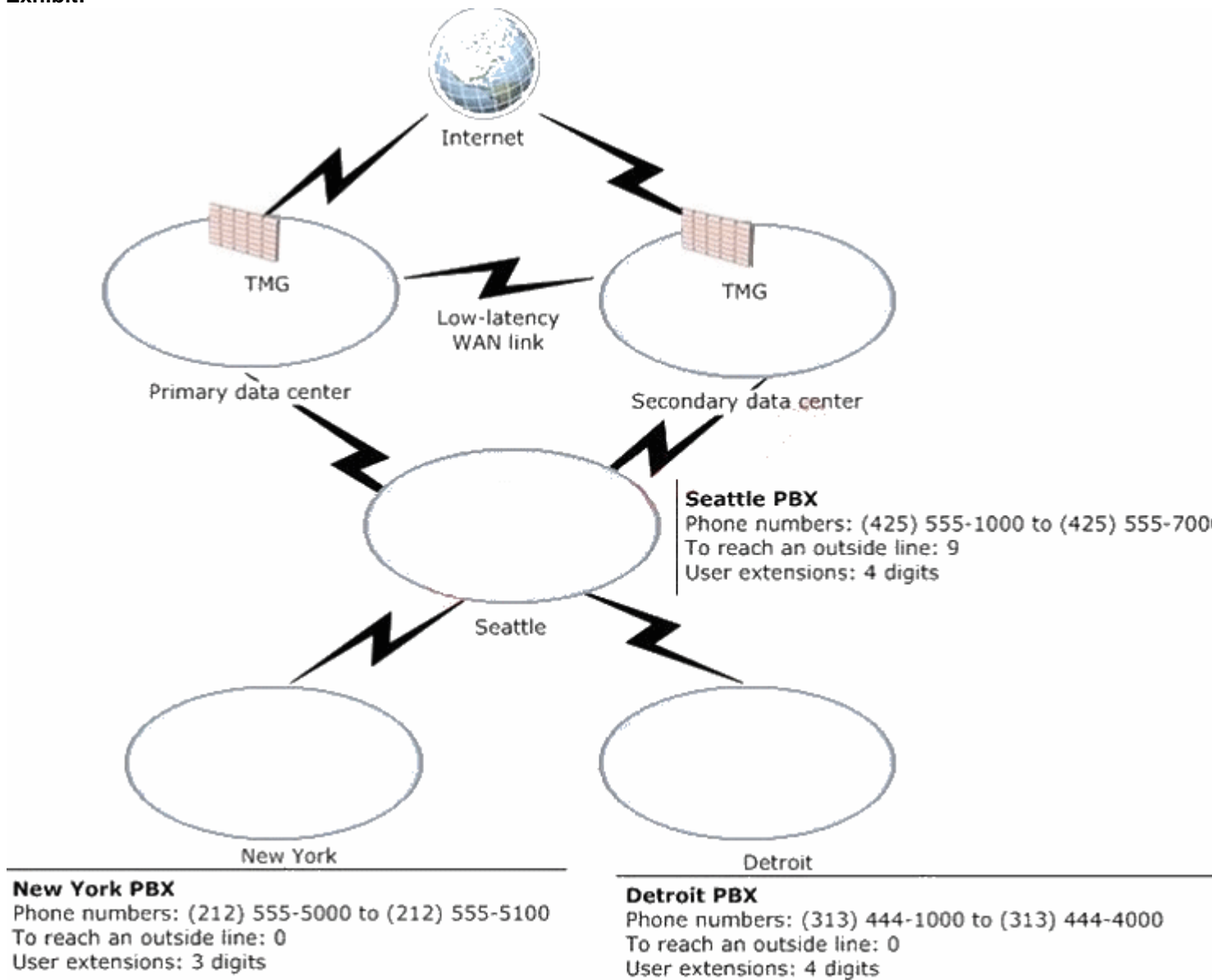
Reference Data

The typical bandwidth utilization for various codecs is listed in the following table.

Codec	Bandwidth
G.711	59.8Kbps
G.722	42.8 Kbps
RT Audio (8 KHz)	25.9 Kbps
RT Audio (16 KHz)	34.8 Kbps

A T1 interface supports 23 concurrent calls

Exhibit:



- A. 33.98 Mbps
- B. 58.40 Mbps
- C. 41.80 Mbps

D. 25.29 Mbps

Correct Answer: B

Section: (none)

Explanation

Explanation/Reference:

ok.

chose A.

think that it's B.

other opinion...

<http://www.aiotestking.com/microsoft/2012/03/how-much-bandwidth-is-required-on-the-network-connection-to-the-sip-trunk/>

SIP Trunk Peak Bandwidth = Max Simultaneous Calls x 80kbps

QUESTION 9

you plan to deploy an edge server in the primary data center.

you need to identify how many public ip addresses are required for the deployment.
the solution must meet companys technical requirements

how many public ip addresses would be required to meet the solution requirement?

Case Study Title (Case Study):

A.Datum Corporation

Company Overview

A. Datum Corporation is a market research company that has 6,000 employees.

Physical Location

The company has a main office and two branch offices. The main office is located in Seattle. The branch offices are located in Detroit and New York. The main office has 5,000 users. The Detroit office has 900 users. The New York office has 100 users. Remote users frequently work from locations that only allow Internet access over ports 80 and 443. The remote users frequently work from client computers that are not joined to the domain.

Existing Environment

Network Infrastructure

The network has the following servers:

- An enterprise certification authority (CA)
- A DHCP server has that the following DHCP options:
 - * 003 Router
 - * 006 DNS Servers
 - * 015 DNS Domain Name
- A Network Time Protocol (NTP) server that is configured to use the User Datagram Protocol (UDP)
- A server in the main office that runs Microsoft Office Communications Server 2007

The network has the following configuration:

- All client computers run Microsoft Office Communicator 2007.
- All Internet-accessible servers are located in a perimeter network.
- Microsoft Forefront Threat Management Gateway (TMG) is used to publish internal Web sites for customers.

- All servers that have Office Communications Server installed run Windows Server 2003 Service Pack 2 (SP2).

Telephony Infrastructure

The telephony infrastructure is configured as shown in the exhibit.

Requirements

Business Goals

A. Datum has the following business goals:

- Minimize software costs.
- Minimize hardware costs.
- Minimize the amount of administrative effort required to deploy new technology solutions.

Planned Changes

A. Datum plans to migrate to Lync Server 2010 and implement the following changes:

- Enable Enterprise Voice for all internal users and remote users.
- In the main office, deploy devices that run Microsoft Lync 2010 Phone Edition.
- Enable IM, presence, and conferencing with a federated partner company named Contoso, Ltd.
- Create a Lync site for each office.
- Add the primary data center and the secondary data center to the Seattle Lync site.

Technical Requirements

- A. Datum must meet the following technical requirements:
- The number of public IP addresses must be minimized.
- The main office must support 1,000 concurrent PSTN calls.
- Lync services must be available to remote users over TCP port 443.
- Remote users must be able to participate in conferences and make Enterprise Voice calls.

▪ Telephony Requirements

The telephony infrastructure must meet the requirements shown in the following table.

Role	Call type	Calling feature
Managers	<ul style="list-style-type: none"> ▪ Local ▪ National ▪ International 	<ul style="list-style-type: none"> ▪ Team call ▪ Delegation ▪ Call transfer ▪ Call forwarding ▪ Bandwidth policy override
Employees	<ul style="list-style-type: none"> ▪ Local ▪ National 	<ul style="list-style-type: none"> ▪ Team call ▪ Delegation ▪ Call transfer ▪ Call forwarding ▪ Bandwidth policy override
Call Center Technicians	<ul style="list-style-type: none"> ▪ Local 	<ul style="list-style-type: none"> ▪ Team call ▪ Delegation ▪ Call transfer ▪ Call forwarding ▪ Bandwidth policy override

Each office will contain users who are assigned the Manager role and the Employees role.

Security Requirements

- A. Datum must meet the following security requirements:
- Federation must only be allowed with Contoso.
 - Lync-related traffic must not be routed over VPN connections

Availability Requirements

If a data center fails, all users in the main office must be able to perform the following tasks:

- Create a conference.
- Place calls to the PSTN.
- View the presence status of all users in the Seattle office.

If a WAN link fails, users in the Detroit office must be able to perform the following tasks:

- Create a conference.
- Place calls to the PSTN.
- View the presence status of all users in the Detroit office.

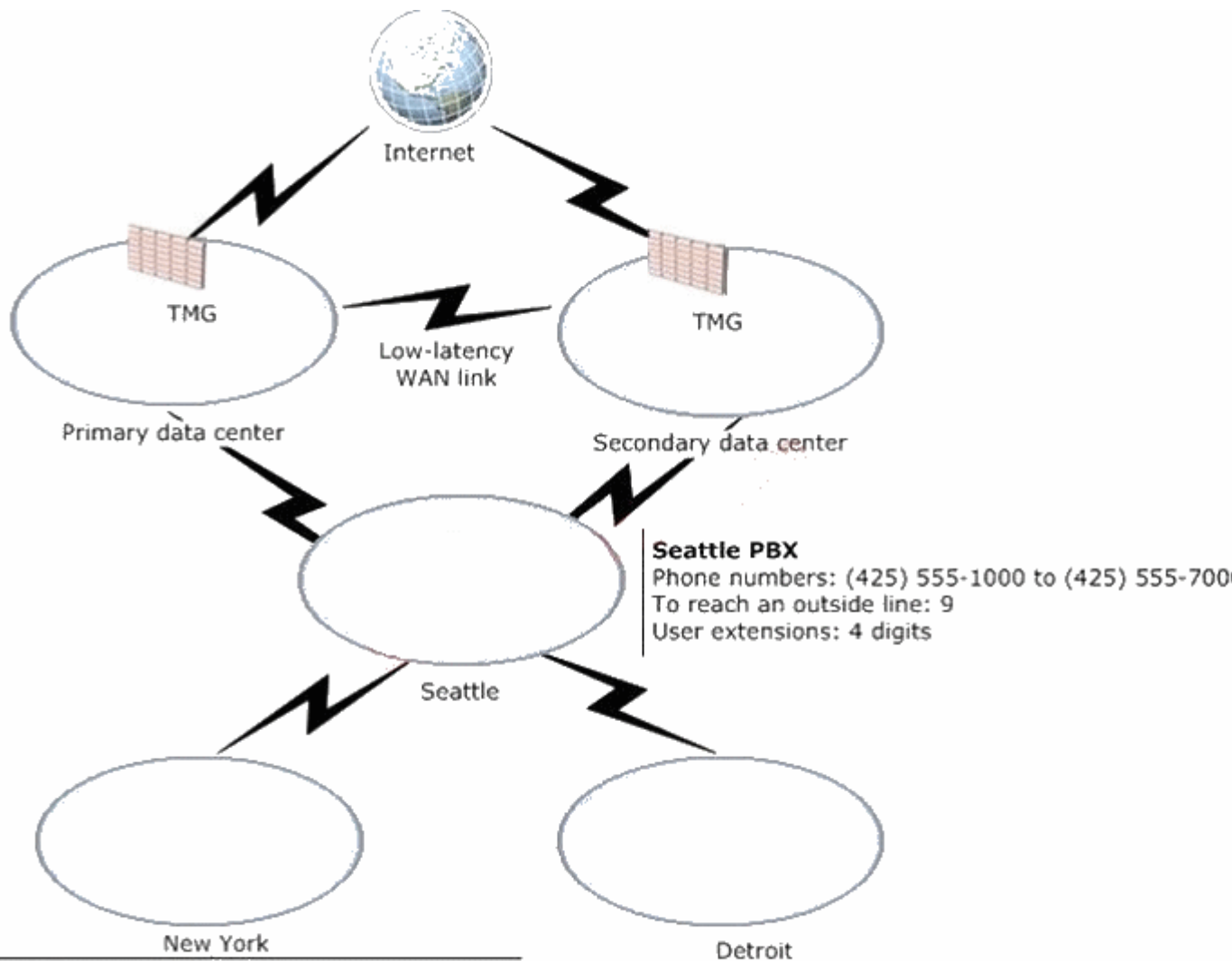
Reference Data

The typical bandwidth utilization for various codecs is listed in the following table.

Codec	Bandwidth
G.711	59.8Kbps
G.722	42.8 Kbps
RT Audio (8 KHz)	25.9 Kbps
RT Audio (16 KHz)	34.8 Kbps

A T1 interface supports 23 concurrent calls

Exhibit:



New York PBX

Phone numbers: (212) 555-5000 to (212) 555-5100
 To reach an outside line: 0
 User extensions: 3 digits

Detroit PBX

Phone numbers: (313) 444-1000 to (313) 444-4000
 To reach an outside line: 0
 User extensions: 4 digits

- A. 1
- B. 2
- C. 3
- D. 4

Correct Answer: C

Section: (none)

Explanation

Explanation/Reference:

this. 3 ip addresses

What is the meaning of "Lync services" (Access Edge, Web, DialIn, than it's 3 ip's)

it's either 1 or 3.



<http://www.gratisexam.com/>