

70-665 Lync server 2010

Number: 70-665
Passing Score: 700
Time Limit: 120 min
File Version: 1.0



<http://www.gratisexam.com/>

Exam A

QUESTION 1

Your network has Microsoft Office Communications Server 2007 R2 installed. You migrate the Office Communications Server 2007 R2 infrastructure to Lync Server 2010. The network contains 2,000 users who use Microsoft Lync 2010 and 100 users who use Microsoft Office Communicator 2007 R2. The corporate security policy states that when users sign in, they must restrict their presence information so that it is visible to only their contacts. You need to recommend changes to the Lync Server 2010 infrastructure to meet the corporate security policy requirements. What should you include in the recommendation?

- A. a Monitoring Server and a Client Version Policy
- B. a Monitoring Server and a Client Version Configuration
- C. Privacy Mode and a Client Version Policy
- D. Privacy Mode and a Response Group

Correct Answer: C

Section: (none)

Explanation

Explanation/Reference:

QUESTION 2

You need to recommend a certificate for the Lync Server 2010 deployment that meets the company's remote user requirements. What should you include in the recommendation?

- A. Deploy a certificate from the internal CA to the external interface of the Edge Server.
- B. Deploy a certificate from the internal CA to the Mediation Servers.
- C. Deploy a certificate from a trusted third-party CA to the external interface of the Edge Server
- D. Deploy a certificate from a trusted third-party CA to the Mediation Servers.

Correct Answer: C

Section: (none)

Explanation

Explanation/Reference:

QUESTION 3

You need to recommend a Lync Server 2010 deployment solution that meets the company's availability requirements for the Detroit office. What should you recommend?

- A. - Deploy an Enterprise Edition server and a PSTN gateway in the Seattle data centers.
 - Deploy a Standard Edition server in the Detroit office.
 - Assign the Standard Edition server as the primary registrar.
 - Assign the Enterprise Edition server as the backup registrar.
- B. - Deploy a Standard Edition server and a PSTN gateway in the Seattle data centers.
 - Deploy a Survivable Branch Appliance (SBA) in the Detroit office.
 - Assign the SBA as the primary registrar.
 - Assign the Standard Edition server as the backup registrar.
- C. - Deploy a Standard Edition server and a PSTN gateway in the Seattle data centers.
 - Deploy a Survivable Branch Server in the Detroit office.
 - Assign the Survivable Branch Server as the primary registrar.
 - Assign the Standard Edition server as the backup registrar
- D. - Deploy a Standard Edition server and a PSTN gateway in the Detroit office.

- Deploy an Enterprise Edition server and a PSTN gateway in the Seattle data center.
- Assign the Standard Edition server as the primary registrar.
- Assign the Enterprise Edition server as the backup registrar.

Correct Answer: D

Section: (none)

Explanation

Explanation/Reference:

QUESTION 4

You need to create a disaster recovery plan for the CMS that meets the company s availability requirements. What should you include in the plan?

- A. the export-CsConfiguration and import-CsConfiguration cmdlet
- B. the DbAnalyze too
- C. the Dbimpexp too
- D. the export-CsLisConfiguration and import-CsLisConfiguration cmdlet

Correct Answer: A

Section: (none)

Explanation

Explanation/Reference:

QUESTION 5

You plan to integrate Lync Server 2010 and Microsoft Exchange Server 2010 Unified Messaging (UM). You need to recommend which tasks must be performed to integrate Lync services and UM. What should you include in the recommendation?

- A. voice routes
- B. PSTN Usage records
- C. Response Group agents
- D. UM dial plans

Correct Answer: D

Section: (none)

Explanation

Explanation/Reference:

QUESTION 6

You plan to deploy an additional Edge Server. You need to recommend changes to the Lync Server infrastructure that meet the company s availability requirements for remote users. What should you include in the recommendation?



<http://www.gratisexam.com/>

- A. hardware load balancing
- B. an additional Mediation Server and a PSTN gateway in each sit
- C. DNS load balancing
- D. a Director pool that contains two Director

Correct Answer: A

Section: (none)

Explanation

Explanation/Reference:

QUESTION 7

You need to recommend changes to the current Lync Server 2010 infrastructure to meet the company s compliance requirements. What should you include in the recommendation?

- A. a Monitoring Server
- B. a Director pool
- C. a trusted application pool
- D. an additional Archiving Server

Correct Answer: A

Section: (none)

Explanation

Explanation/Reference:

QUESTION 8

Your network has a Lync Server 2010 infrastructure that contains the following servers:

- a Director
 - an Edge Server
 - a Front End Server
 - a Mediation Server
- You need to deploy a solution that meets the following requirements:
- Gathers an inventory of all the IP phones on the network.
 - Gathers the usage statistics of all the IP phones on the network. What should you deploy?

- A. a server that runs Microsoft System Center Operations Manager
- B. a Monitoring Server
- C. a server that runs Microsoft System Center Configuration Manager
- D. an Archiving Server

Correct Answer: B

Section: (none)

Explanation

Explanation/Reference:

QUESTION 9

Your network has Lync Server 2010 deployed. You plan to deploy Enterprise Voice. You need to recommend an Enterprise Voice solution that meets the following requirements:

- Ensures that users can make voice calls to the PSTN
 - Ensures that users can make voice calls if a single server or a single device fails
- What should you include in the recommendation?

- A. Network Load Balancing (NLB) and a Director pool that contains two servers
- B. two session border controllers and two media gateways
- C. two media gateways and a Director pool that contains two servers
- D. two media gateways and a Mediation pool that contains two servers

Correct Answer: D

Section: (none)

Explanation

Explanation/Reference:

QUESTION 10

Your network has Lync Server 2010 deployed. All client computers have Microsoft Office Communicator 2007 R2 installed. You need to recommend a strategy to control the bandwidth utilization of Office Communicator 2007 R2. What should you include in the recommendation?

- A. media bypass
- B. Response Groups
- C. Group Policies
- D. Voice Policies

Correct Answer: C

Section: (none)

Explanation

Explanation/Reference:

QUESTION 11

Your company has a main office and a branch office. Several network routes exist between the offices. You plan to deploy Lync Server 2010. You need to recommend a solution that distributes voice traffic over the network routes. What should you include in the recommendation?

- A. Call Admission Control
- B. in-band provisioning
- C. a Director pool
- D. a Survival Branch Appliance (SBA)

Correct Answer: A

Section: (none)

Explanation

Explanation/Reference:

QUESTION 12

You plan to deploy a Lync Server 2010 infrastructure that will contain four servers. The servers will be configured as shown in the following table.

Server name	Server role
Server1	Front-End Server
Server2	Consolidated Edge Server
Server3	Director
Server4	Mediation Server

The Lync Server 2010 infrastructure will use Public IM Connectivity (PIC). You need to identify which server requires a certificate issued by a trusted certification authority (CA) on the Internet. Which server should you identify?

- A. Server4
- B. Server3
- C. Server2
- D. Server1

Correct Answer: C

Section: (none)

Explanation

Explanation/Reference:

QUESTION 13

Your company uses a hosted Microsoft Exchange Server 2010 solution that has Unified Messaging (UM) enabled. You plan to deploy Lync Server 2010 at the company's main office. You need to recommend a solution that integrates Lync services and UM. What should you include in the recommendation?

- A. a federation trust
- B. Call Admission Control
- C. hosted voice mail policies
- D. voice mail rerouting policies

Correct Answer: C

Section: (none)

Explanation

Explanation/Reference:

QUESTION 14

Your company has a main office and a branch office. The offices connect to each other by using a WAN link. The main office has a Lync Server 2010 Front End pool. All users use devices that run Microsoft Lync 2010 Phone Edition. All users make PC-to-PC calls. You need to recommend a solution to ensure that if the WAN link fails, users in the branch office can make calls to users in the main office by using the PSTN. What should you recommend adding to the branch office?

- A. a Mediation Server
- B. a Survivable Branch Appliance (SBA)
- C. an Edge Server
- D. a Front End Server

Correct Answer: B

Section: (none)

Explanation

Explanation/Reference:

QUESTION 15

You plan to deploy a Lync Server 2010 infrastructure that will contain the following server roles:

- An Edge Server
 - A Front End Server
 - A Mediation Server
 - A Monitoring Server
 - An Archiving Server
- You need to recommend the minimum number of Windows servers required for the planned deployment. How many servers should you recommend?

- A. 2
- B. 5
- C. 4
- D. 3

Correct Answer: D

Section: (none)

Explanation

Explanation/Reference:

QUESTION 16

You are evaluating the deployment of Call Admission Control. Which bandwidth management requirement will NOT be met by implementing Call Admission Control?

- A. Reroute calls to alternate paths when there is an insufficient amount of bandwidth available to make a call.
- B. Ensure that the amount of bandwidth available provides good call quality.
- C. Limit the total amount of bandwidth consumed on the network.
- D. Provide reporting on calls that could not be completed due to insufficient bandwidth.

Correct Answer: C

Section: (none)

Explanation

Explanation/Reference:

QUESTION 17

You are evaluating the use of standard gateway devices that support eight T1 interfaces each. The gateways do not support media bypass. You need to recommend a solution to support PSTN calls from the main office. The solution must meet the company's technical requirements. What should you include in the recommendation?

- A. Deploy six gateways and a single Mediation pool that contains six servers.
- B. Deploy six gateways and a single Mediation pool that contains two servers.
- C. Deploy four gateways and two Mediation pools that each contains a single server.
- D. Deploy four gateways and a single Mediation pool that contains two servers.

Correct Answer: B

Section: (none)

Explanation

Explanation/Reference:

QUESTION 18

Your network has Lync Server 2010 deployed. The estimated bandwidth for various codecs is shown in the following table.

You plan to deploy a solution to support conference calls that have the following characteristics:

- Use the RTVideo (VGA 30 fps) codec for video.
- Include three participants who use Microsoft Lync 2010 and require audio and video.
- Include two participants who use Microsoft Office Communicator 2007 R2 and require audio. You need to calculate the maximum amount of bandwidth that will be used by the conference call. How much bandwidth will be used by the conferencing server?

- A. 1094 Kpbs
- B. 784 Kpbs
- C. 1648 Kbps
- D. 3062 Kbps

Correct Answer: C

Section: (none)

Explanation

Explanation/Reference:

QUESTION 19

You plan to deploy Exchange Server 2010 Unified Messaging (UM). You need to recommend a solution for the planned deployment that meets the company's availability requirements and supports the business goals. What should you include in the recommendation?

- A. Deploy the Unified Messaging server role to a new Exchange organization
- B. Deploy the Unified Messaging server role on each Exchange server
- C. Deploy the Unified Messaging server role by using cross-premise mode
- D. Add two new Exchange servers that have the Unified Messaging server role deployed

Correct Answer: B

Section: (none)

Explanation

Explanation/Reference:

QUESTION 20

Your network has Lync Server 2010 deployed. The network contains four servers. The servers are configured as shown in the following table.

You need to deploy a solution to gather the following information:

- Call detail records
- Quality of Experience (QoE) What should you do?

- A. Deploy the Monitoring Server role on Server1 and associate the role with Pool01. Deploy the Monitoring Server role on Server3 and associate the role with Pool02.
- B. Deploy the Monitoring Server role and the Archiving Server role on Server1, Server2, and Server3 and associate the roles with both pools.
- C. Deploy the Monitoring Server role on Server4 and associate the role with both pools.

D. Deploy the Monitoring Server role on Server1 and associate the role with Pool02. Deploy the Monitoring Server role on Server3 and associate the role with Pool01.

Correct Answer: C

Section: (none)

Explanation

Explanation/Reference:

QUESTION 21

You are evaluating the implementation of a SIP trunk in the main office to support the planned Lync Server 2010 deployment. You need to calculate the minimum amount of bandwidth required for PSTN calls. How much bandwidth is required on the network connection to the SIP trunk?

- A. 41.80 Mbps
- B. 58.40 Mbps
- C. 33.98 Mbps
- D. 25.29 Mbps

Correct Answer: B

Section: (none)

Explanation

Explanation/Reference:

QUESTION 22

Your network has a Lync Server 2010 infrastructure that has Enterprise Voice enabled. The Lync Server 2010 infrastructure contains the following components:

- a SIP trunk
 - an Archiving Server
 - Two Edge Servers in an Edge pool
 - Three Lync Server 2010 Enterprise Edition servers in a Front End pool
- You need to recommend changes to the Lync Server 2010 infrastructure to support Enhanced 911 (E911) services. What should you include in the recommendation?

- A. a Director
- B. a Mediation Server
- C. an Edge Server
- D. a Monitoring Server

Correct Answer: B

Section: (none)

Explanation

Explanation/Reference:

QUESTION 23

Your network has Lync Server 2010 deployed. You need to create a backup plan to ensure that the Response Group and the Conferencing Attendant configuration can be restored. Which tool should you include in the backup plan?



<http://www.gratisexam.com/>

- A. ApplicationSettingsExport
- B. Dbimpexp
- C. LcsCmd
- D. Topology Builder

Correct Answer: A

Section: (none)

Explanation

Explanation/Reference:

QUESTION 24

You need to recommend a solution to ensure that when users from the New York office travel to the London office, and they dial 911, the call is routed to the local emergency services operator. What should you include in the recommendation?

- A. Implement Site Location Policies
- B. Implement User Location Policies
- C. Modify the Dial Plan settings for the New York office
- D. Modify the Dial Plan settings for the London office

Correct Answer: A

Section: (none)

Explanation

Explanation/Reference:

QUESTION 25

You need to recommend a PSTN connectivity solution for the branch office that meets the company's availability requirements. What should you include in the recommendation?

- A. multiple voice route policies
- B. Call Admission Control
- C. Exchange Server 2010 Unified Messaging (UM)
- D. Location Policies

Correct Answer: A

Section: (none)

Explanation

Explanation/Reference:

QUESTION 26

You need to recommend a client migration solution that meets the company's technical requirements.

What should you include in the recommendation?

- A. Group Policy objects (GPOs) that define the Link-Layer Topology Discovery (LLTD) setting
- B. Modifications to the Global Client Version Configuration setting
- C. Modifications to the Global Client Version Policies
- D. Group Policy objects (GPOs) that define the Client Bootstrapping Policies

Correct Answer: C

Section: (none)

Explanation

Explanation/Reference:

QUESTION 27

You need to recommend changes to the Lync infrastructure to ensure that internal users can sign in to Lync 2010 if a Lync Server 2010 Front End Server fails. Which two actions should include in the recommendation? (Each correct answer presents part of the solution. Choose two.)

- A. Deploy a Director pool
- B. Associate a backup registrar with each Front End Server
- C. For each Front End Server, configure a Service Location (SRV) record that uses a Host (A) record
- D. For each Front End Server, configure a Service Location (SRV) record that uses an Alias (CNAME) record

Correct Answer: BC

Section: (none)

Explanation

Explanation/Reference:

QUESTION 28

You need to recommend an Enterprise Voice solution for the New York office. What should you include in the recommendation?

- A. an IP-PBX gateway
- B. a dial plan
- C. a Response Group
- D. the Attendant Console

Correct Answer: B

Section: (none)

Explanation

Explanation/Reference:

QUESTION 29

Your network has Lync Server 2010 deployed. You need to recommend a strategy to reproduce the Lync Server 2010 infrastructure at a disaster recovery site. Which tool should you include in the recommendation?

- A. DbAnalyze
- B. Best Practices Analyzer

- C. User Replicator
- D. Topology Builder

Correct Answer: D

Section: (none)

Explanation

Explanation/Reference:

QUESTION 30

You plan to deploy a Lync Server 2010 infrastructure that will contain one SIP domain. The infrastructure will support Web and dial-in conferencing for internal and remote users. Each simple URL will have a unique FQDN. You need to recommend the DNS records required for the simple URLs. Which records should you recommend?

- A. three external Text (TXT) records and three internal TXT records
- B. two external Service Location (SRV) records and two internal SRV records
- C. three external Alias (CNAME) records and three internal CNAME records
- D. two external Host (A) records and three internal A records

Correct Answer: D

Section: (none)

Explanation

Explanation/Reference:

QUESTION 31

Your network has federation enabled with networks that run Microsoft Office Communications Server 2007 R2 and Windows Live. You plan to deploy a Lync Server 2010 Edge pool that will contain three servers. You need to plan a deployment solution to ensure that the Edge services are available if a server fails. What should you include in the plan?

- A. - one hardware load balancer on the internal side of the perimeter network
- one hardware load balancer on the external side of the perimeter network
- B. - two hardware load balancers on the internal side of the perimeter network
- two reverse proxies on the external side of the perimeter network
- C. - one hardware load balancer on the internal side of the perimeter network
- DNS load balancing on the external side of the perimeter network
- D. - one hardware load balancer on the external side of the perimeter network
- two reverse proxies on the external side of the perimeter network

Correct Answer: A

Section: (none)

Explanation

Explanation/Reference:

QUESTION 32

Your network has Lync Server 2010 deployed. You need to recommend a strategy to control meetings. The strategy must meet the following requirements:

- Limit all meetings to a maximum of 100 participants.
- Disable application sharing for all participants, except for 10 participants. What should you include in the recommendation?

- A. Modify the Global Meeting Configuration settings and create a new User Conferencing Policy.
- B. Modify the Global Conferencing Policy and create a new collection of Pool Meeting Configuration settings.
- C. Modify the Global Meeting Configuration settings and create a new collection of Pool Meeting Configuration settings.
- D. Modify the Global Conferencing Policy and create a new User Conferencing Policy.

Correct Answer: D

Section: (none)

Explanation

Explanation/Reference:

QUESTION 33

You need to recommend a backup solution for the configuration store of the Lync Server 2010 deployment. Which database should you include in the recommendation?

- A. RTCLocal\rtcdyn
- B. RTC\xds
- C. RTCLocal\rtc
- D. RTC\rtc

Correct Answer: B

Section: (none)

Explanation

Explanation/Reference:

QUESTION 34

You need to recommend a solution to control conferencing. The solution must meet the company's conferencing requirements. What should you recommend?

- A. - Disable all of the conferencing features in the Global Client Policy.
- Create a User Client Policy for each feature.
- B. - Enable all of the conferencing features in the Global Client Policy.
- Create a User Client Policy for each group.
- C. - Disable all of the conferencing features in the Global Conferencing Policy.
- Create a User Conferencing Policy for each group.
- D. - Enable all of the conferencing features in the Global Conferencing Policy.
- Create a User Conferencing Policy for each feature.

Correct Answer: C

Section: (none)

Explanation

Explanation/Reference:

QUESTION 35

Your company has a main office and five branch offices. The network has a Lync Server 2010 infrastructure that contains the following components:

- A Survivable Branch Appliance (SBA) in each branch office
 - A Lync Server 2010 Enterprise Edition pool in the main office
 - A WAN link that connects the main office to each branch office
- Users in the branch office report that they

experience poor audio quality when they initiate voice calls. You need to recommend a solution that improves the audio quality of calls initiated by the branch office users. What should you include in the recommendation?

- A. SBA in the main office
- B. an Edge Server in each branch office
- C. Call Admission Control in the main office
- D. a dedicated Mediation Server in each branch office

Correct Answer: C

Section: (none)

Explanation

Explanation/Reference:

QUESTION 36

Your company has offices in North America and Europe. You plan to deploy Lync Server 2010. You need to gather information about the existing telephony infrastructure to design a dial plan for the planned deployment. Which information should you gather? (Each correct answer presents part of the solution. Choose two.)

- A. the analog phone devices in use
- B. the IP phone devices in use
- C. the phone number patterns of each office
- D. the telephony locales of each office

Correct Answer: CD

Section: (none)

Explanation

Explanation/Reference:

QUESTION 37

You need to recommend changes to the proposed Lync server design that meet the company's availability requirements for PSTN connectivity in the main office. What should you include in the recommendation?

- A. a new dial plan.
- B. an additional server that runs the Exchange Server 2010 Unified Messaging server role.
- C. an additional Lync Server 2010 server in the Front End pool
- D. a Response Group

Correct Answer: C

Section: (none)

Explanation

Explanation/Reference:

QUESTION 38

You need to recommend changes to the proposed Lync Server design that meet the company's remote user requirements. What should you include in the recommendation?

- A. a reverse proxy array

- B. Active Directory Lightweight Directory Services (AD LDS)
- C. multiple Location Policies
- D. multiple Alias (CNAME) records

Correct Answer: A

Section: (none)

Explanation

Explanation/Reference:

QUESTION 39

You plan to deploy an Edge Server in the primary data center. You need to identify how many public IP addresses are required for the deployment. The solution must meet the company's technical requirements. How many public IP addresses would be required to meet the solution requirement?

- A. 2
- B. 3
- C. 4
- D. 1

Correct Answer: C

Section: (none)

Explanation

Explanation/Reference:

QUESTION 40

You need to recommend a solution for the branch office users that meets the company's availability requirements. What should you include in the recommendation?

- A. a primary registrar and a backup registrar
- B. a Director
- C. a Survivable Branch Appliance (SBA)
- D. two Location Policies

Correct Answer: A

Section: (none)

Explanation

Explanation/Reference:

QUESTION 41

Your network contains a Lync Server 2010 server that has Privacy Mode enabled for all users. You need to plan the deployment of Response Groups. What should you include in the plan?

- A. a trusted application for each Response Group
- B. modifications to the Contacts list of each user configured as an Agent
- C. the Attendant Console for each user configured as an Agent
- D. a Voice Policy for each Response Group

Correct Answer: B

Section: (none)

Explanation

Explanation/Reference:

QUESTION 42

You plan to deploy a Lync Server 2010 infrastructure that will contain the following components:

- A Director pool
 - A Front End pool
 - A Monitoring Server
 - A reverse proxy array
 - A Microsoft SQL Server store
- You need to identify which Lync components use DNS load balancing. Which two roles should you identify? (Each correct answer presents part of the solution. Choose two.)

- A. Director pool
- B. Front End pool
- C. Monitoring Server
- D. reverse proxy array
- E. SQL Server store

Correct Answer: AB

Section: (none)

Explanation

Explanation/Reference:

QUESTION 43

You need to recommend a Web conferencing solution for the Lync Server 2010 servers in the main office. The solution must meet the company's availability requirements. What should you include in the recommendation?

- A. two Standard Edition servers configured to use hardware load balancing
- B. two servers in an Enterprise Edition Front End pool configured to use DNS load balancing
- C. two servers in an Enterprise Edition Front End pool configured to use hardware load balancing
- D. two servers in a Director pool configured to use Network Load Balancing (NLB)

Correct Answer: C

Section: (none)

Explanation

Explanation/Reference:

QUESTION 44

Your network contains a Microsoft Exchange Server 2010 organization. You deploy Lync Server 2010 on the network. You need to ensure that you can enable Unified Messaging (UM) for all Microsoft Lync 2010 users. What should you add to the network before you enable UM?

- A. a Director
- B. a Mediation Server
- C. an Enterprise Voice dial plan
- D. an Enterprise Voice route

Correct Answer: C

Section: (none)

Explanation

Explanation/Reference:

QUESTION 45

Your network has Microsoft Office Communications Server 2007 R2 installed. You migrate the Office Communications Server 2007 R2 infrastructure to Lync Server 2010. The network contains 2,000 users who use Microsoft Lync 2010 and 100 users who use Microsoft Office Communicator 2007 R2. The corporate security policy states that when users sign in, they must restrict their presence information so that it is visible to only their contacts. You need to recommend changes to the Lync Server 2010 infrastructure to meet the corporate security policy requirements. What should you include in the recommendation?

- A. a Monitoring Server and a Client Version Policy
- B. a Monitoring Server and a Client Version Configuration
- C. Privacy Mode and a Client Version Policy
- D. Privacy Mode and a Response Group

Correct Answer: C

Section: (none)

Explanation

Explanation/Reference:

QUESTION 46

You plan to deploy a Director pool named dirpool.contoso.com. The Director pool will contain three servers named dir-01.contoso.com, dir-02.contoso.com, and dir-03.contoso.com. You need to identify the names that are required for the Director pool certificate. Which names should you identify?

- A. a common name of dir-01.contoso.com and Subject Alternative Name (SAN) entries of dir-01.contoso.com, dir-03.contoso.com, and dir-02.contoso.com
- B. a common name of contoso.com and Subject Alternative Name (SAN) entries of dir-01.contoso.com, dir-02.contoso.com, dir-03.contoso.com, and contoso.com
- C. a common name of dirpool.contoso.com and Subject Alternative Name (SAN) entries of dir-01.contoso.com, dir-02.contoso.com, dir-03.contoso.com, and dirpool.contoso.com
- D. a common name of sip.contoso.com and Subject Alternative Name (SAN) entries of dir-01.contoso.com, dir-02.contoso.com, dir-03.contoso.com, and sip.contoso.com

Correct Answer: C

Section: (none)

Explanation

Explanation/Reference:

QUESTION 47

Your network has a Lync Server 2010 infrastructure that contains the following servers:

- Two Edge Servers
 - One Mediation Server
 - One reverse proxy server
 - Three Enterprise Edition servers in a Front End pool
- You need to recommend changes to ensure that the Address Book service for remote users is available if a single server fails. The solution must minimize costs. Which components should you recommend adding to the network?

- A. one reverse proxy server and DNS load balancing

- B. one Mediation Server and one hardware load balancer
- C. one Mediation Server and DNS load balancing
- D. one reverse proxy server and one hardware load balancer

Correct Answer: D

Section: (none)

Explanation

Explanation/Reference:

QUESTION 48

You need to recommend changes to the DNS zone that meet the company's compliance requirements. What records should you include in the recommendation?

- A. _sipfederationssl._tcp.litwareinc.com and _sip._ssl.litwareinc.com
- B. _sipfederationtls._tcp.litwareinc.com and _sip._tls.litwareinc.com
- C. _sipfederationtcp._tls.litwareinc.com and _tls._sip.litwareinc.com
- D. _sipfederationtls._udp.litwareinc.com and _sip.litwareinc.com

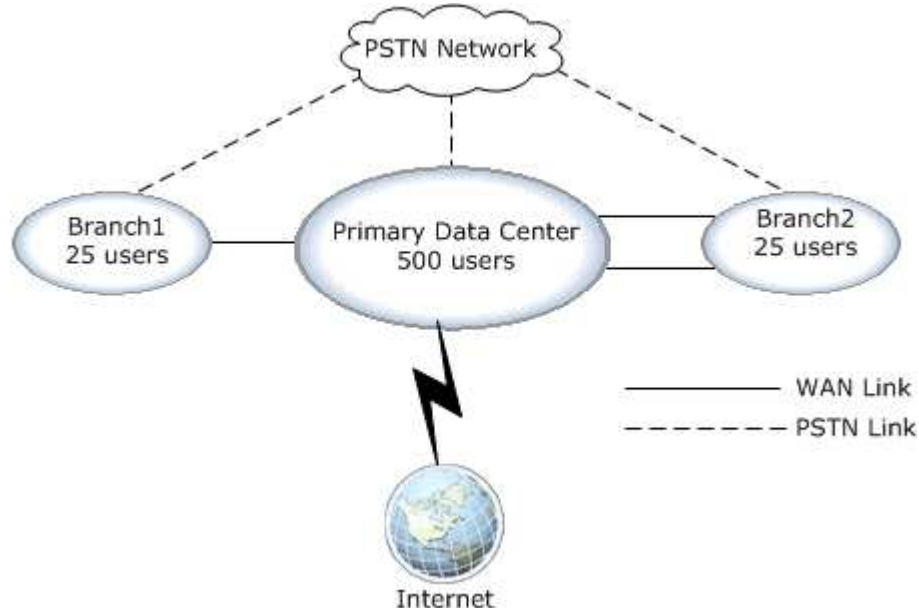
Correct Answer: B

Section: (none)

Explanation

Explanation/Reference:

QUESTION 49



Your network is configured as shown in the exhibit. (Click the Exhibit button.) You deploy two Lync Server 2010 Front End Servers in the company's data center and you enable Enterprise Voice. You need to recommend a voice strategy for the branch offices that meets the following requirements:

- If a single WAN link fails, users in all offices must be able to call each other.
- The number of Lync Server 2010 servers in the branch offices must be minimized. What should you include in the recommendation?

- A. In Branch1, deploy a Survivable Branch Appliance (SBA). In Branch2, deploy a PSTN gateway.

- B. In Branch1, deploy a Lync Server 2010 Mediation Server. In Branch2, deploy a Lync Server 2010 Mediation Server.
- C. In Branch1, deploy a Survivable Branch Appliance (SBA). In Branch2, deploy a Lync Server 2010 Mediation Server.
- D. In Branch1, deploy a Lync Server 2010 Mediation Server. In Branch2, deploy a PSTN gateway.

Correct Answer: A

Section: (none)

Explanation

Explanation/Reference:



<http://www.gratisexam.com/>