

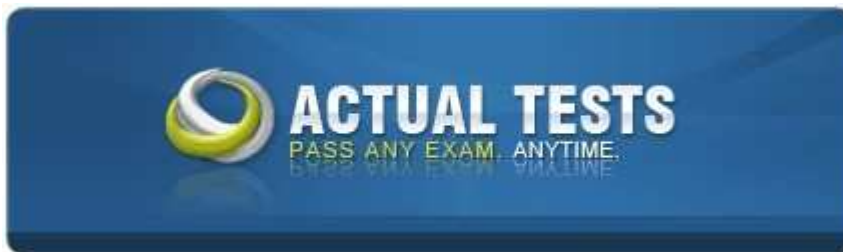
IBM 000-957 - IBM XIV Storage System Technical Solutions V3

Number: 000-957
Passing Score: 800
Time Limit: 120 min
File Version: 5.0



<http://www.gratisexam.com/>

IBM 000-957



IBM XIV Storage System Technical Solutions V3

Version: 5.0
IBM 000-957 Exam
26.07.2012

Exam A

QUESTION 1

A customer wants to use an XIV system to replace legacy storage for a Microsoft Exchange environment, and is concerned about backup windows.

Which option would solve this concern?

- A. Consistency groups and full volume copies
- B. XIV snapshot technology and FlashCopy Manager
- C. XIV snapshot technology with iSCSI replication
- D. Utilize Quality of Service performance classes

Correct Answer: B

Section: (none)

Explanation

Explanation/Reference:

Explanation:

QUESTION 2

What is the benefit of the IBM XIV Storage Management Console for the VMware vCenter plug-in?

- A. integrates XIV volume allocation to VMware datastores
- B. integrates VMware datastore creation into the XIV GUI
- C. automates VMware datastore failover between XIV systems
- D. enables the VMware vCenter console to manage XIV replication

Correct Answer: A

Section: (none)

Explanation

Explanation/Reference:

Explanation:

QUESTION 3

Which features best match the XIV system's hardware benefits?

- A. Automatic tiering and scalability
- B. Massive parallelism and scalability
- C. Scalability and RAID implementation
- D. Massive parallelism and hot spot management

Correct Answer: B

Section: (none)

Explanation

Explanation/Reference:

Explanation:

"Pass Any Exam. Any Time." - www.actualtests.com 2 IBM 000-957 Exam

QUESTION 4

Which of the following is a TRUE statement about XIV snapshots?

- A. XIV snapshots utilize a copy-on-write design.

- B. XIV snapshots copy data to create a snapshot.
- C. XIV snapshots utilize a redirect-on-write design.
- D. A maximum of 8000 snapshots can be created concurrently.

Correct Answer: C

Section: (none)

Explanation

Explanation/Reference:

Explanation:

QUESTION 5

How many more iSCSI ports does a 10 module XIV system Gen3 Model 114 have than a 10 module XIV system Model A14?



<http://www.gratisexam.com/>

- A. 8
- B. 10
- C. 12
- D. 16

Correct Answer: B

Section: (none)

Explanation

Explanation/Reference:

Explanation:

QUESTION 6

Which XIV system feature enables proactive notification to the IBM service center?

- A. Call Home
- B. SNMP traps
- C. Remote Support
- D. XIV Remote Service Center

Correct Answer: C

Section: (none)

Explanation

Explanation/Reference:

Explanation:

QUESTION 7

"Pass Any Exam. Any Time." - www.actualtests.com 3 IBM 000-957 Exam

Using the exhibit as a reference, what are the two reasons the delete option cannot be selected for the UDB storage pool? (Select two)

The screenshot shows the XIV Storage Management interface. The main window displays a list of storage pools and volumes. The 'UDB' pool is highlighted in yellow. A context menu is open over the 'UDB' pool, showing options: Resize, Delete, Rename, Change Lock Behavior, Add Volumes, Properties, and Sort By ...

Name	Size (GB)	Used (GB)	Used Capacity (%)	Consistency
Cloud			17%	30,030.0 GB Hard
HR Portal			31%	1,305.0 GB Hard
IT_Department			3%	3,006.0 GB Hard
UDB			0%	10,015.0 GB Hard
UDB_1	17 GB	0 GB		0.0 MiB
UDB_2	17 GB	0 GB		0.0 MiB
Websphere			8%	3,006.0 GB Hard

At the bottom of the interface, there are two status bars: 'Hard: 47365 of 79113 GB (60%)' and 'IOPS: 15480 Total'.

- A. The pool contains volumes
- B. The storage pool is locked
- C. The pool contains snapshots
- D. The storage pool is mapped to a cluster
- E. The administrator has default privileges

Correct Answer: AC

Section: (none)

Explanation

Explanation/Reference:

Explanation:

QUESTION 8

What are two benefits of the XIV system's storage virtualization architecture? (Select two)

- A. Hardware redundancy
- B. Dynamic rate adaption
- C. Online data migration
- D. Preserves server connectivity
- E. Differential snapshot capability

Correct Answer: CE

Section: (none)

Explanation

Explanation/Reference:

Explanation:

"Pass Any Exam. Any Time." - www.actualtests.com 4 IBM 000-957 Exam

QUESTION 9

In an XIV system Gen3, what is the maximum number of inactive modules with Capacity on Demand (CoD) enabled?

- A. 6
- B. 9
- C. 3
- D. 7

Correct Answer: C

Section: (none)

Explanation

Explanation/Reference:

Explanation:

QUESTION 10

A technical specialist needs the IBM approved checklist to provide an IBM Technical Delivery Assessment (TDA). Where is this checklist located?

- A. IBM Techline
- B. Solution Assurance Library
- C. In the box of the new equipment
- D. It is provided when the unit is registered

Correct Answer: B

Section: (none)

Explanation

Explanation/Reference:

Explanation:

QUESTION 11

A customer has 40 hosts, each with a 1 TB data volume. All hosts are less than 20% utilized. As part of an XIV consolidation, all host data volumes will be copied using a standard file copy tool.

In order to ensure data integrity, how much hard capacity should be allocated on the XIV system?

- A. 8 TB
- B. 16 TB
- C. 32 TB
- D. 40 TB

"Pass Any Exam. Any Time." - www.actualtests.com 5 IBM 000-957 Exam

Correct Answer: A

Section: (none)

Explanation

Explanation/Reference:

Explanation:

QUESTION 12

Which sophisticated method distributes data on all drives in an XIV system?

- A. Pseudo-random algorithm
- B. Non-linear data algorithm
- C. Pattern of non-random blocks
- D. Sequential distribution of data

Correct Answer: A

Section: (none)

Explanation

Explanation/Reference:

Explanation:

QUESTION 13

What two recommendations are considered best practice when using an XIV system with VMware ESX4.1?
(Select two)

- A. Use larger LUNs instead of LVM extents.
- B. Always ensure Async mirroring is employed.
- C. Always use the fixed path routing selection.
- D. Always use round-robin path routing selection.
- E. Always use the latest manufacturer's HBA drivers with the VMware OS

Correct Answer: AD

Section: (none)

Explanation

Explanation/Reference:

Explanation:

QUESTION 14

For an XIV system, what is the recommended location for cooling tiles?

- A. 1 tile in front of the system
 - B. 2 tiles directly beneath the system
 - C. 2 tiles directly in front of the system
 - D. 1 tile at the front and 1 at the rear of the system
- "Pass Any Exam. Any Time." - www.actualtests.com 6 IBM 000-957 Exam

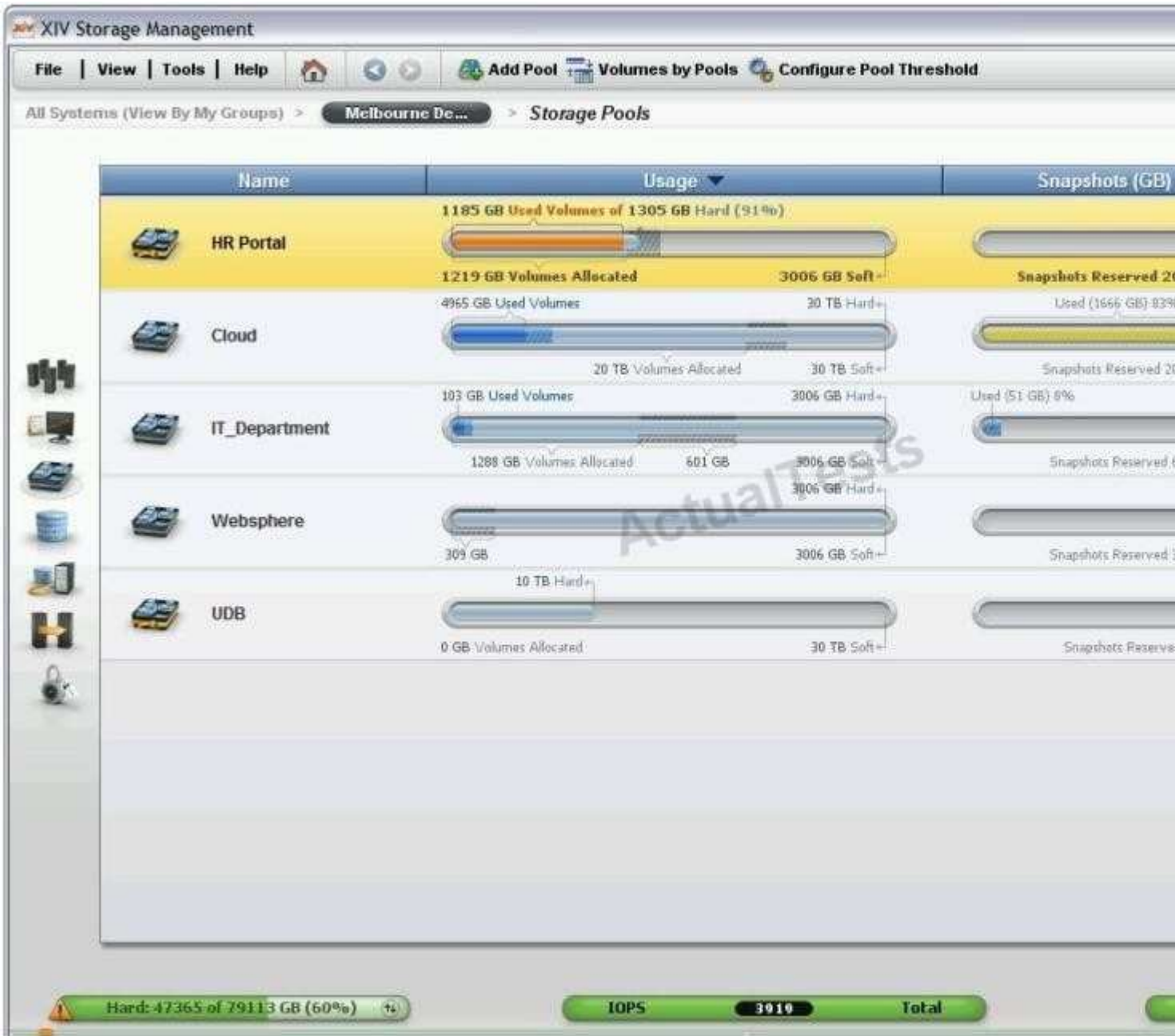
Correct Answer: C

Section: (none)
Explanation

Explanation/Reference:
Explanation:

QUESTION 15

Referring to the exhibit, what action must the administrator take to address the storage event on the HR Portal storage group?



- A. Resize volumes
- B. Remove snapshots
- C. Increase hard limit
- D. Increase soft limit

Correct Answer: C

Section: (none)

Explanation

Explanation/Reference:

Explanation:

QUESTION 16

On an XIV system, how can the servers with the heaviest I/O in real time be identified?

- A. XIV Top
- B. state_list
"Pass Any Exam. Any Time." - www.actualtests.com 7 IBM 000-957 Exam
- C. host_list/s io
- D. Statistics in the XIV GUI

Correct Answer: A

Section: (none)

Explanation

Explanation/Reference:

Explanation:

QUESTION 17

What is required to manage an XIV system Gen3 with IBM Systems Director?

- A. VAAI
- B. Host Attachment Kit
- C. MIB file for the XIV
- D. Embedded CIMOM for the XIV

Correct Answer: C

Section: (none)

Explanation

Explanation/Reference:

Explanation:

QUESTION 18

On an XIV system, what is an effect on the volumes within a storage pool with default settings when the hard capacity limit is reached?

- A. All volumes within the pool immediately go offline
- B. All volumes within the pool enter the Read Only state
- C. The space reclamation process automatically expands the pool
- D. Hard capacity is automatically allocated from alternative pools

Correct Answer: B

Section: (none)

Explanation

Explanation/Reference:

Explanation:

QUESTION 19

What is the standard warranty period for an XIV system Gen3 2812-114?

- A. 1 year
 - B. 2 years
 - C. 3 years
 - D. 5 years
- "Pass Any Exam. Any Time." - www.actualtests.com 8 IBM 000-957 Exam

Correct Answer: C

Section: (none)

Explanation

Explanation/Reference:

Explanation:

QUESTION 20

Compared to other IBM storage offerings, which of the following is unique functionality on an XIV system?

- A. automated load balancing
- B. eliminates storage tiering
- C. support for remote monitoring
- D. easy-to-use graphical user interface

Correct Answer: B

Section: (none)

Explanation

Explanation/Reference:

Explanation:

QUESTION 21

A new customer wants to purchase XIV system Gen3 architecture. They need 20 TB of usable storage with capacity to expand, and iSCSI capabilities, but the budget for this project is limited.

What XIV system Gen3 configuration meets these requirements?

- A. 9 module system with 4 Capacity on Demand activations
- B. 6 module system with 3 Capacity on Demand activations
- C. 9 module system with 3 Capacity on Demand activations
- D. 15 module system with 3 Capacity on Demand activations

Correct Answer: B

Section: (none)

Explanation

Explanation/Reference:

Explanation:

QUESTION 22

What new technology is used in an XIV system Gen3 to interconnect the modules?

- A. Redundant FDDI switches
 - B. Redundant FCoE connectivity
 - C. Redundant InfiniBand switches
- "Pass Any Exam. Any Time." - www.actualtests.com 9 IBM 000-957 Exam

D. Redundant 10Gb Ethernet switches

Correct Answer: B

Section: (none)

Explanation

Explanation/Reference:

Explanation:

QUESTION 23

Which bus type is used by XIV system Gen3 modules to facilitate faster communication with disk drives?

- A. RIO
- B. FC-AL
- C. PCI-eGen2
- D. InfiniBand

Correct Answer: C

Section: (none)

Explanation

Explanation/Reference:

Explanation:

QUESTION 24

A customer needs to migrate Linux EXT3 filesystems from a standalone host's internal disks to a Linux partition on an IBM z10 with XIV storage.

Which of the following can be used to achieve this task?

- A. Use IBM SAN Volume Controller
- B. Use the XIV data migration facility
- C. Use secure copy (SCP) on the Linux partition
- D. Use IBM Transparent Data Migration Facility (TDMF) for z/OS

Correct Answer: C

Section: (none)

Explanation

Explanation/Reference:

Explanation:

QUESTION 25

A customer needs to migrate data from an existing storage system to a new XIV system. Which of

"Pass Any Exam. Any Time." - www.actualtests.com 10 IBM 000-957 Exam
the following tasks must be performed to enable the migration?

- A. unused space on existing volumes must be cleared
- B. VAAI agents need to be configured to use the existing storage system
- C. the XIV system needs to be set up as a host definition on the existing storage system
- D. firmware levels on the existing storage system must be checked for compatibility on the System Storage Interoperability Center

Correct Answer: C

Section: (none)

Explanation

Explanation/Reference:

Explanation:

QUESTION 26

Which is an advantage of the XIV system over traditional storage?

- A. shorter failed disk rebuild time
- B. redundant high speed interconnects
- C. centrally managed intelligent cache
- D. multiple integrated storage controllers

Correct Answer: A

Section: (none)

Explanation

Explanation/Reference:

Explanation:

QUESTION 27

On an XIV system, what is the correct sequence for setting up a mirrored consistency group?

- A. create consistency group, mirror consistency group, add volumes, activate mirroring
- B. select volumes, create consistency group, mirror consistency group, activate mirroring
- C. create consistency group, mirror consistency group, activate mirroring, add mirrored volumes
- D. select mirrored volumes, create consistency group, mirror consistency group, activate mirroring

Correct Answer: C

Section: (none)

Explanation

Explanation/Reference:

Explanation:

QUESTION 28

On an XIV system, what is the maximum number of QoS performance classes that a host can

"Pass Any Exam. Any Time." - www.actualtests.com 11 IBM 000-957 Exam
reside in at a given time?

- A. 1
- B. 2
- C. 4
- D. 8

Correct Answer: A

Section: (none)

Explanation

Explanation/Reference:

Explanation:

QUESTION 29

What is the maximum number of Quality of Service (QoS) performance classes that can be created on an XIV system Gen3?

- A. 2
- B. 4
- C. 6
- D. 8

Correct Answer: B

Section: (none)

Explanation

Explanation/Reference:

Explanation:

QUESTION 30

Which XIV feature enables administrators to prioritize I/O to applications?

- A. Storage pools
- B. Consistency groups
- C. Intelligent caching
- D. Host rate limitation

Correct Answer: D

Section: (none)

Explanation

Explanation/Reference:

Explanation:

QUESTION 31

How many times faster are the Fibre Channel adapters in an XIV system Gen3 Model 114 than

"Pass Any Exam. Any Time." - www.actualtests.com 12 IBM 000-957 Exam
the XIV system Model A14?

- A. 8
- B. 4
- C. 2
- D. 20

Correct Answer: C

Section: (none)

Explanation

Explanation/Reference:

Explanation:

QUESTION 32

How can a customer expand capacity on a non-CoD partially populated XIV system with 27 TB capacity?

- A. add 1 module with 1 TB drives
- B. add 3 modules with 1 TB drives
- C. add 3 modules with 2 TB drives
- D. add 2 modules with 1 TB drives

Correct Answer: B

Section: (none)

Explanation

Explanation/Reference:

Explanation:

QUESTION 33

What is a benefit of the architectural changes between the XIV system Model A14 and Model 114?

- A. resilience
- B. performance
- C. inter-array routing
- D. number of host protocols

Correct Answer: B

Section: (none)

Explanation

Explanation/Reference:

Explanation:

QUESTION 34

The customer is considering a 6 module XIV system Model A14. Their 400 servers will be multi-

"Pass Any Exam. Any Time." - www.actualtests.com 13 IBM 000-957 Exam path enabled with connections to two interface modules.

What change must be made to support this requirement?

- A. the code level must be 10.2.x or greater
- B. install the latest host attach kit on all servers
- C. the configuration must include a minimum of 9 modules
- D. ensure that less than 128 servers are attached to any one storage pool

Correct Answer: C

Section: (none)

Explanation

Explanation/Reference:

Explanation:

QUESTION 35

On an XIV system, the consumed capacity for the purposes of calculating entitlement in a Capacity-on-Demand system is the sum of:

- A. all the pool sizes
- B. all the volume sizes and the snapshot reserve
- C. all the space occupied by data in volumes and snapshots
- D. all the volume sizes excluding slave volumes from remote replication

Correct Answer: B

Section: (none)

Explanation

Explanation/Reference:

Explanation:

QUESTION 36

On an XIV system, what is the maximum number of modules and/or drives the Global Spare capacity can be used to recover?

- A. Onefull module
- B. Twofull modules
- C. Onefull module and 3 additional drives
- D. Onefull module and 9 additional drives

Correct Answer: C

Section: (none)

Explanation

Explanation/Reference:

Explanation:

"Pass Any Exam. Any Time." - www.actualtests.com 14 IBM 000-957 Exam

QUESTION 37

A fully populated XIV system Model A14 with hard data usage of 47 TB suffers a data module failure. A forced rebuild process is complete.

What will happen in the event of a second data module failure?

- A. all write operations will be suspended
- B. the system will perform a rebuild back to full redundancy
- C. an emergency shutdown will occur as redundancy has been lost
- D. servers connected to the affected module will lose connectivity

Correct Answer: B

Section: (none)

Explanation

Explanation/Reference:

Explanation:

QUESTION 38

Identify two ways reserved physical disk capacity is used on the XIV system? (Select two)

- A. Metadata
- B. Storage pools
- C. Spare capacity
- D. Volume expansion
- E. Thin provisioning

Correct Answer: AC

Section: (none)

Explanation

Explanation/Reference:

Explanation:

QUESTION 39

What are the three types of Technical Delivery Assessments (TDAs) applicable to an XIV system?

- A. Onsite, remote, hybrid
- B. Installation, production, upgrade
- C. Pre-sales, pre-installation, post-install
- D. Pre-announce, general availability (GA), withdrawn from marketing

Correct Answer: C

Section: (none)

Explanation

Explanation/Reference:

Explanation:

"Pass Any Exam. Any Time." - www.actualtests.com 15 IBM 000-957 Exam

QUESTION 40

On a target XIV system, the slave volume of an active synchronous mirror pair can be:

- A. increased in size
- B. used as the source for snapshots
- C. the master for another mirror pair
- D. unlocked for simultaneous update from another server

Correct Answer: B

Section: (none)

Explanation

Explanation/Reference:

Explanation:

QUESTION 41

Which two XIV system features support savings in capacity? (Select two)

- A. XIV GUI
- B. Snapshots
- C. Self-tuning
- D. Thin provisioning
- E. Data distribution

Correct Answer: BD

Section: (none)

Explanation

Explanation/Reference:

Explanation:

QUESTION 42

On an XIV system, what setting ensures that all paths are utilized for a single AIX volume?

- A. fast fail is enabled
- B. queue depth is set to one
- C. dynamic tracking is enabled
- D. round-robin multipathing algorithm is selected

Correct Answer: D

Section: (none)

Explanation

Explanation/Reference:

Explanation:

"Pass Any Exam. Any Time." - www.actualtests.com 16 IBM 000-957 Exam

QUESTION 43

On an XIV system, what is the function of a Consistency Group?

- A. Provides data consistency in mirror peers
- B. Groups fibre-channel ports for bandwidth aggregation
- C. Allows the creation of simultaneous volume snapshots
- D. Ensures consistent performance for servers in the group

Correct Answer: C

Section: (none)

Explanation

Explanation/Reference:

Explanation:

QUESTION 44

In a competitive situation what tool uses iostat output to model a workload?

- A. iometer
- B. Disk Magic
- C. Capacity Magic
- D. Standalone Solutions Configuration Tool (SSCT)

Correct Answer: B

Section: (none)

Explanation

Explanation/Reference:

Explanation:

QUESTION 45

What is one benefit of the VAAI full copy function as compared to the VMware native copy function?

- A. space efficient snapshots
- B. decreases host processing
- C. deduplicated full volume copies
- D. increases replication bandwidth

Correct Answer: B

Section: (none)

Explanation

Explanation/Reference:

Explanation:

QUESTION 46

"Pass Any Exam. Any Time." - www.actualtests.com 17 IBM 000-957 Exam

Which of the following can a storage administrator use to manage an XIV system?

- A. XCLI client
- B. Standard SSH client
- C. Standard web browser
- D. Standard telnet client

Correct Answer: A

Section: (none)

Explanation

Explanation/Reference:

Explanation:

QUESTION 47

What is the function of the Automatic Transfer Switch (ATS) in an XIV system?

- A. To switch between redundant power supplies within the XIV system
- B. To switch between external power feeds in the event of a power failure
- C. To transfer power from one UPS to the others in the event of a UPS failure
- D. To transfer power between the AC and DC power inputs to the Ethernet switches

Correct Answer: B

Section: (none)

Explanation

Explanation/Reference:

Explanation:

QUESTION 48

The customer has an XIV system Model A14 with 2 TB drives and 9 modules.

What is the minimum number of storage pools required to take advantage of this system's available capacity?

- A. 1
- B. 2
- C. 4
- D. 6

Correct Answer: B

Section: (none)

Explanation

Explanation/Reference:

Explanation:

"Pass Any Exam. Any Time." - www.actualtests.com 18 IBM 000-957 Exam

QUESTION 49

To set up "Call Home" for an XIV system, what systems management information is required from the customer?

- A. VPN settings
- B. SMTP server address
- C. SNMP browser address
- D. Firewall port settings

Correct Answer: B

Section: (none)

Explanation

Explanation/Reference:

Explanation:

QUESTION 50

A customer, George Adams, of Stimnex, has an XIV system installed at 7001 Lake Circle, and a second XIV system installed at 4685 International Parkway, and would like to mirror the two systems. The two locations are approximately 15 kilometers (10 miles) apart.

Which mirroring scheme would be the best solution for this customer?

- A. Asynchronous
- B. Synchronous
- C. Snapshots
- D. VDisk copy

Correct Answer: B

Section: (none)

Explanation

Explanation/Reference:

Explanation:

QUESTION 51

What is the function of IBM XIV VSS Provider?

- A. Implements thin provisioning for Microsoft Windows volumes
- B. Shadows the Microsoft server volume to a back server volume
- C. Integrates Microsoft Windows applications with XIV snapshots
- D. Automates Microsoft server volume copying to another XIV system

Correct Answer: C

Section: (none)

Explanation

Explanation/Reference:

Explanation:

"Pass Any Exam. Any Time." - www.actualtests.com 19 IBM 000-957 Exam

QUESTION 52

What is the increase in Gbps in the module cache-to-disk bandwidth from an XIV system Model A14 to an XIV system Gen3 Model 114?

- A. 240
- B. 360
- C. 480
- D. 120

Correct Answer: A

Section: (none)

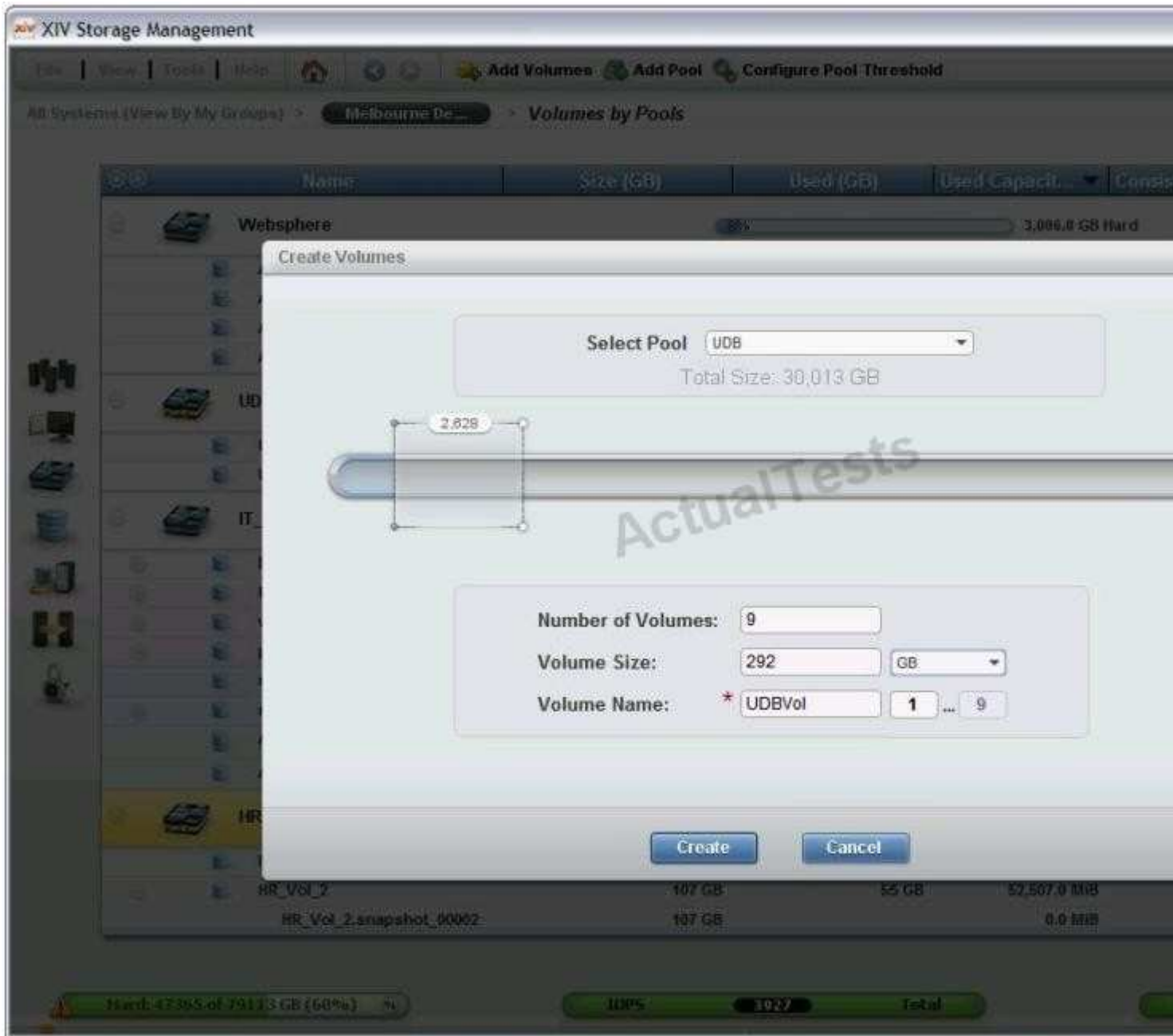
Explanation

Explanation/Reference:

Explanation:

QUESTION 53

Referring to the exhibit, in addition to GB, what two options are available for the UDBVol Volume Size? (Select two)



- A. TB
 - B. GiB
 - C. Blocks
 - D. Extents
 - E. Partitions
- "Pass Any Exam. Any Time." - www.actualtests.com 20 IBM 000-957 Exam

Correct Answer: BC

Section: (none)

Explanation

Explanation/Reference:

Explanation:

QUESTION 54

Which XIV software capability allows administrators to over-provision allocated storage in a storage pool?

- A. Snapshots
- B. Host attach kit
- C. Online migration
- D. Thin provisioning

Correct Answer: A

Section: (none)

Explanation

Explanation/Reference:

Explanation:

QUESTION 55

How many 1 Gbps iSCSI ports are active on a 6 module XIV system Gen3?

- A. 0
- B. 6
- C. 8
- D. 12

Correct Answer: B

Section: (none)

Explanation

Explanation/Reference:

Explanation:

QUESTION 56

An empty thin provisioned pool on an XIV system has a hard size of 34 GB and a soft size of 51 GB.

How many 1 GB volumes can be created within the pool?

"Pass Any Exam. Any Time." - www.actualtests.com 21 IBM 000-957 Exam

- A. 2
- B. 3
- C. 34
- D. 51

Correct Answer: B

Section: (none)

Explanation

Explanation/Reference:

Explanation:

QUESTION 57

What characteristic differentiates a grid storage system from a traditional storage system?

- A. Pooled storage
- B. Mirrored cache
- C. Eliminates hot spots
- D. Enables load balancing

Correct Answer: C

Section: (none)

Explanation

Explanation/Reference:

Explanation:

QUESTION 58

How can a customer add CIFS access to their XIV solution?

- A. update the XIV microcode to 10.2.4.C
- B. add an N series gateway connected to the XIV system
- C. from the XIV GUI create a volume and format it with ZFS
- D. install GPFS on the XIV maintenance server and share the filesystem with Samba

Correct Answer: B

Section: (none)

Explanation

Explanation/Reference:

Explanation:

QUESTION 59

The customer has Tivoli Storage Productivity Center Standard Edition (TPC) installed in their environment.

Which of the following would be a benefit of enabling TPC for their XIV systems?



<http://www.gratisexam.com/>

- A. consistency groups
- B. three-site replication
- C. capacity growth prediction
- D. real-time performance monitoring

Correct Answer: C

Section: (none)

Explanation

Explanation/Reference:

Explanation:

QUESTION 60

Which keyboard shortcut allows the user to change to a different XIV system, but keep the current context?

- A. <alt>p
- B. <alt>x
- C. <alt>s
- D. <alt>c

Correct Answer: C

Section: (none)

Explanation

Explanation/Reference:

Explanation:

QUESTION 61

What is the benefit of using off-the-shelf components in an XIV system?

- A. Reduces power consumption
- B. Combine multiple frames into one unit
- C. Take advantage of industry developments
- D. Use different drive sizes in a single frame

Correct Answer: C

Section: (none)

Explanation

Explanation/Reference:

Explanation:

QUESTION 62

Compared to other IBM storage offerings, which of the following is unique functionality on an XIV system?

"Pass Any Exam. Any Time." - www.actualtests.com 23 IBM 000-957 Exam

- A. Integration with VMware VAAI
- B. All-inclusive software licensing
- C. Virtualization of storage interfaces
- D. Use of MPIO as the multi-pathing driver

Correct Answer: B

Section: (none)

Explanation

Explanation/Reference:

Explanation:

QUESTION 63

How does the XIV system react in the event of full site power failure?

- A. It will fail over to a redundant power supply and continue operation.
- B. It will initiate an emergency shutdown and de-stage all data to disk.
- C. It will immediately save all cache to Non-Volatile memory and shut down
- D. The built-in UPS will keep the system running until power can be restored.

Correct Answer: B
Section: (none)
Explanation

Explanation/Reference:
Explanation:

QUESTION 64

Which of the following is a pre-requisite for the XIV host attach kit on Windows 2003?

- A. NPIV
- B. sg3_utils
- C. Service Pack 2
- D. IBM Subsystem Device Driver

Correct Answer: C
Section: (none)
Explanation

Explanation/Reference:
Explanation:

QUESTION 65

How many UPS failures can an XIV system tolerate and still remain operational?

- A. 0
- B. 1
"Pass Any Exam. Any Time." - www.actualtests.com 24 IBM 000-957 Exam
- C. 2
- D. 3

Correct Answer: B
Section: (none)
Explanation

Explanation/Reference:
Explanation:

QUESTION 66

Which of the following statements is TRUE about volumes on an XIV system?

- A. A volume can be part of at most four consistency groups.
- B. The target of a volume copy must be the same size as the source
- C. All volumes in a consistency group must belong to the same storage pool
- D. The source volume can be moved to a different storage pool from its snapshots

Correct Answer: C
Section: (none)
Explanation

Explanation/Reference:
Explanation:

QUESTION 67

The customer has a requirement to move an existing XIV system Model 114 to an area where earthquakes are

frequent.

What is the IBM supported option for this situation?

- A. A ruggedized rack kit can only be installed with an RPQ
- B. A ruggedized rack is no longer available for new XIV Models
- C. A ruggedized rack kit must be ordered and installed at the new location
- D. A ruggedized rack must have been ordered at the time of original shipping

Correct Answer: C

Section: (none)

Explanation

Explanation/Reference:

Explanation:

QUESTION 68

What is the difference in memory capacity in a XIV system Gen3 Model 114 compared to an XIV system Model A14, when both systems have 12 modules and 2 TB drives?

"Pass Any Exam. Any Time." - www.actualtests.com 25 IBM 000-957 Exam

- A. 16 GB
- B. 96 GB
- C. 192 GB
- D. 288 GB

Correct Answer: A

Section: (none)

Explanation

Explanation/Reference:

Explanation:

QUESTION 69

What is required for an XIV system to participate in VMware Site Recovery Manager environments?

- A. common SSH key
- B. vCenter plug-in
- C. open source SRM API
- D. Storage Replication Adapter

Correct Answer: D

Section: (none)

Explanation

Explanation/Reference:

Explanation:

QUESTION 70

A customer wants to purchase XIV Gen3 to replace 2 storage systems, plus an additional 200 TB of usable storage.

Given the following capacity information, which solution meets the minimum requirement?

Current system 1 capacity is 75 TB usable

Current system 2 capacity is 105 TB usable

- A. One 15 module XIV system Gen3 with 3 TB drives
- B. Two 15 module XIV systems Gen3 with 2 TB drives
- C. Two 15 module XIV systems Gen3 with 3 TB drives
- D. Three 15 module XIV systems Gen3 with 3 TB drives

Correct Answer: C

Section: (none)

Explanation

Explanation/Reference:

Explanation:

"Pass Any Exam. Any Time." - www.actualtests.com 26 IBM 000-957 Exam

QUESTION 71

A customer has various IBM storage platforms and would like to gather and analyze historical system information from each with a single tool.

What IBM software will allow them to gather and mine this information?

- A. Tivoli Storage Manager (TSM)
- B. Remote Support Manager (RSM)
- C. Tivoli Storage Productivity Center (TPC)
- D. IBM Systems Director with Storage Control

Correct Answer: C

Section: (none)

Explanation

Explanation/Reference:

Explanation:

QUESTION 72

A customer has an XIV system Gen3 with 6 modules of 2 TB drives, and wants to add 84 TB of usable capacity with 3 TB drives.

Which of the following options meet the customer's requirement?

- A. Add a 6 module XIV system with 3 TB drives
- B. Add a 9 module XIV system with 3 TB drives
- C. Add 6 modules with 3 TB drives to the existing XIV system
- D. Add 6 modules with 3 TB drives to the existing XIV system, and create a separate storage pool

Correct Answer: A

Section: (none)

Explanation

Explanation/Reference:

Explanation:

QUESTION 73

What is the minimum requirement to connect an existing IBM i server to an XIV system?

- A. XIVfirmwareV11.0.0.a
- B. Host Attachment Kit V1.7
- C. SAN Volume Controller (SVC) V6.2
"Pass Any Exam. Any Time." - www.actualtests.com 27 IBM 000-957 Exam
- D. Virtual I/O Server (VIOS) V2.11

Correct Answer: D

Section: (none)

Explanation

Explanation/Reference:

Explanation:

QUESTION 74

A major financial institution needs to replicate data over a distance of 500 miles with a minimum recovery point objective of less than 30 seconds.

Which storage controller-based solution should the IBM storage representative recommend?

- A. XIV
- B. DS4000
- C. DS8000
- D. DS3000

Correct Answer: C

Section: (none)

Explanation

Explanation/Reference:

Explanation:

QUESTION 75

Across the IBM storage portfolio, which function is a key benefit provided by the XIV System?

- A. simple capacity management
- B. optimized for capacity less than 50 TB
- C. combined file and block support in one system
- D. support for computationally intensive applications

Correct Answer: A

Section: (none)

Explanation

Explanation/Reference:

Explanation:

QUESTION 76

What is the unique attribute of the XIV storage controller?

- A. low cost
- B. massive capacity
"Pass Any Exam. Any Time." - www.actualtests.com 28 IBM 000-957 Exam
- C. use of FATA drives
- D. consistent performance

Correct Answer: D

Section: (none)

Explanation

Explanation/Reference:

Explanation:

QUESTION 77

What is the size of the partition used to distribute data in the XIV Storage System?

- A. 4 KB
- B. 1 MB
- C. 1 GB
- D. 17 GB

Correct Answer: B

Section: (none)

Explanation

Explanation/Reference:

Explanation:

QUESTION 78

The partition table spreads the partitions across which physical or logical components?

- A. drives
- B. storage pools
- C. interface modules
- D. consistency groups

Correct Answer: A

Section: (none)

Explanation

Explanation/Reference:

Explanation:

QUESTION 79

How does the XIV Storage System handle partitions?

- A. Mirrors data partitions
- B. Mirrors partitions from spare drives
- C. Computes parity for the partitions automatically
- D. Migrates partitions from fast drives to slower drives "Pass Any Exam. Any Time." - www.actualtests.com 29
IBM 000-957 Exam

Correct Answer: A

Section: (none)

Explanation

Explanation/Reference:

Explanation:

QUESTION 80

How does the XIV Storage subsystem deal with the practice of storage tiers?

- A. improves utilization rates
- B. eliminates the need for tiers
- C. provides multiple tiers of storage
- D. simplifies data movement between tiers

Correct Answer: B

Section: (none)

Explanation

Explanation/Reference:

Explanation:

QUESTION 81

Which XIV System feature helps to decrease total cost of ownership by simplification of the configuration process?

- A. No need to configure RAID arrays
- B. One screen to specify block mirroring
- C. Hot spare SATA drives added automatically
- D. All host connections automatically virtualized

Correct Answer: A

Section: (none)

Explanation

Explanation/Reference:

Explanation:

QUESTION 82

What are two key ways the XIV Storage System provides value? (Select two)

- A. consistent performance across diverse workloads
- B. intuitive ease of use and management can greatly reduce administration cost
- C. based on a dual controller design, disaster recovery is both quick and painless
- D. volumes are implemented as huge files leveraging the XIV System's file level snapshot
- E. current tier 1 systems are based on 20-year-old design and can be scaled to any multi-tiered storage needed

"Pass Any Exam. Any Time." - www.actualtests.com 30 IBM 000-957 Exam

Correct Answer: AB

Section: (none)

Explanation

Explanation/Reference:

Explanation:

QUESTION 83

What is the minimum number of UPS modules that must be configured in an XIV Storage System?

- A. 1
- B. 2
- C. 3
- D. 4

Correct Answer: C

Section: (none)

Explanation

Explanation/Reference:

Explanation:

QUESTION 84

What is NOT an example of the XIV System architecture?

- A. volumes are broken up into 10 MB partitions
- B. each partition has a primary and a secondary copy
- C. the distribution table maintains the mapping of partitions
- D. volumes are divided into partitions that are distributed across all disks

Correct Answer: A

Section: (none)

Explanation

Explanation/Reference:

Explanation:

QUESTION 85

How many disks are in a data module?

- A. 10
- B. 12
- C. 14
- D. 16

Correct Answer: B

Section: (none)

Explanation

Explanation/Reference:

Explanation:

"Pass Any Exam. Any Time." - www.actualtests.com 31 IBM 000-957 Exam

QUESTION 86

During a rebuild, the XIV System maximizes efficiency by copying a partition under which condition?

- A. The volume has been formatted.
- B. All snapshots have been deleted.
- C. Data has been written to the volume.
- D. There are snapshots with multiple deletion priorities.

Correct Answer: C

Section: (none)

Explanation

Explanation/Reference:

Explanation:

QUESTION 87

What is changed in the XIV System when physical capacity is added?

- A. volume size
- B. partition size
- C. allocation table
- D. distribution table

Correct Answer: D

Section: (none)

Explanation

Explanation/Reference:

Explanation:

QUESTION 88

Which element of the XIV System's hardware implementation helps drive overall system performance?

- A. use of industry standard components
- B. distribution of data across components
- C. software carefully tuned to components
- D. use of high performance network components

Correct Answer: B

Section: (none)

Explanation

Explanation/Reference:

Explanation:

"Pass Any Exam. Any Time." - www.actualtests.com 32 IBM 000-957 Exam

QUESTION 89

A customer's existing cache centric storage subsystem is experiencing high cache hit ratios providing excellent performance. The customer expresses a concern about the XIV System's cache contention.

What is the correct response regarding potential cache bottlenecks?

- A. Each module holds a map of the cache of all the nodes, allowing balanced cache usage.
- B. Each module is responsible for its own cache, allowing use of aggressive caching algorithms.
- C. With 8 GB of cache per module and a cache distribution algorithm, bottlenecks are eliminated.
- D. The non-blocking nature of the internal network provides any to any communications between the caching component of the modules.

Correct Answer: B

Section: (none)

Explanation

Explanation/Reference:

Explanation:

QUESTION 90

Under which condition does the XIV System outperform competitive subsystems?

- A. Drive re-build
- B. Single-host access
- C. Highly sequential access
- D. Host channel arbitration

Correct Answer: A

Section: (none)

Explanation

Explanation/Reference:

Explanation:

QUESTION 91

How does the XIV System's UPS improve component reliability?

- A. by providing power for up to 4 hours to limit number of shutdowns
- B. by assigning one UPS to continue power cooling while the system shuts down gracefully
- C. by providing stable current, unique power down fan cooling, and extended battery life
- D. by providing stable current via double conversion (AC-to-DC-to-AC) minimizing sudden "Pass Any Exam. Any Time." - www.actualtests.com 33 IBM 000-957 Exam changes

Correct Answer: D

Section: (none)

Explanation

Explanation/Reference:

Explanation:

QUESTION 92

In the XIV System how does "scrubbing" prevent data loss?

- A. After detecting a media error, it shuts down the drive.
- B. After detecting a media error, it rewrites the data on the same sector.
- C. After detecting a media error, it realigns the sectors for optimum performance.
- D. After detecting a media error, it marks the sector as bad and rebuilds the data.

Correct Answer: D

Section: (none)

Explanation

Explanation/Reference:

Explanation:

QUESTION 93

In addition to disks, switches and UPS systems, which components can be replaced without system downtime?

- A. modules, backplanes
- B. modules, power supplies
- C. cooling fans, backplanes
- D. power supplies, controllers

Correct Answer: B

Section: (none)

Explanation

Explanation/Reference:

Explanation:

QUESTION 94

What are the components and strategy behind the XIV System's internal connectivity?

- A. Redundant XIV designed multi-path switches for enhanced performance and reliability.
- B. Backplane technology adapted from the DS8000 System Storage technology for its enterprise characteristics.
- C. Two 1GBEthernet switches with redundant connections to every module because Ethernet "Pass Any Exam. Any Time." - www.actualtests.com 34 IBM 000-957 Exam switches are more flexible than backplanes.
- D. Four 100Mb Ethernet switches with redundant connections to every module because Ethernet switches are more flexible than backplanes.

Correct Answer: C

Section: (none)

Explanation

Explanation/Reference:

Explanation:

QUESTION 95

What is the correct definition of the soft size of thin provisioned volumes?

- A. amount allocated
- B. amount of data written
- C. volume size seen by the host
- D. 1.5 times the hard size value

Correct Answer: C

Section: (none)

Explanation

Explanation/Reference:

Explanation:

QUESTION 96

A customer has implemented a storage pool for thin provisioning. As part of their business process they create a snapshot of a database volume four times a day. Eventually through daily growth, volume creation, and multiple snapshots the storage pool reaches its hard limit.

What will the XIV Storage System automatically do to create space for the storage pool when this occurs?

- A. the storage pool becomes Read Only
- B. the system halts due to lack of space
- C. snapshots are deleted to free up space
- D. the storage pool is dynamically resized

Correct Answer: C

Section: (none)

Explanation

Explanation/Reference:

Explanation:

QUESTION 97

"Pass Any Exam. Any Time." - www.actualtests.com 35 IBM 000-957 Exam

After initial creation of a thinly provisioned pool, how much physical data has been written to the disk drives?

- A. 1 MB
- B. 4KB
- C. None
- D. 16 GB

Correct Answer: C

Section: (none)

Explanation

Explanation/Reference:

Explanation:

QUESTION 98

Pool A is thinly provisioned and needs more physical space.

What action would the system administrator perform?

- A. Increase the hard capacity of pool A
- B. Increase the soft capacity of pool A
- C. Reduce the hard capacities of other pools
- D. Create another pool that only has a soft capacity

Correct Answer: A

Section: (none)

Explanation

Explanation/Reference:

Explanation:

QUESTION 99

What are two purposes of using snapshot copies? (Select two)

- A. file sharing
- B. logical backup
- C. data migration
- D. software testing
- E. multiple host access

Correct Answer: BD

Section: (none)

Explanation

Explanation/Reference:

Explanation:

"Pass Any Exam. Any Time." - www.actualtests.com 36 IBM 000-957 Exam

QUESTION 100

In an XIV differential snapshot, how many copies of the 1 MB partition will exist if the source and the two snapshots are consistent, but one snapshot has changed?

- A. 1
- B. 2
- C. 3
- D. 4

Correct Answer: D

Section: (none)

Explanation

Explanation/Reference:

Explanation:

QUESTION 101

A customer has a special project that utilizes existing production data to run tests using new software. The storage administrator creates a snapshot for the test.

What would be the best type of snapshot to use?

- A. Instant
- B. Writable
- C. Incremental
- D. Differential

Correct Answer: B

Section: (none)

Explanation

Explanation/Reference:

Explanation:

QUESTION 102

When scripting a snapshot of a 5 TB database, how much time should be allocated for the creation of a mountable copy for streaming out to tape?

- A. Almost zero
- B. 2 seconds per TB
- C. 150 milliseconds per TB
- D. Depends on overall system I/O

Correct Answer: A

Section: (none)

Explanation

Explanation/Reference:

Explanation:

"Pass Any Exam. Any Time." - www.actualtests.com 37 IBM 000-957 Exam

QUESTION 103

The customer has a writable snapshot and needs to recover from it. What task must be performed before the restore?

- A. Rescan the snapshot
- B. Make a backup snapshot before mounting
- C. Check the file system before the restore
- D. Change the pointers in the distribution table

Correct Answer: C

Section: (none)

Explanation

Explanation/Reference:

Explanation:

QUESTION 104

A mirrored volume in a database is not allowing writes to it. The system administrator verifies there is available space in the pool.

What on the XIV System could be preventing the volume from receiving writes?

- A. Another pool is accessing the volume's storage pool on DR XIV System.
- B. Too many snapshots have been taken in the pool in which the DR volume is located.
- C. The volume is set up under best effort mode and the DR XIV System cannot be contacted.
- D. The volume is set up in XIV for mandatory mode and the DR XIV System cannot be contacted.

Correct Answer: D

Section: (none)

Explanation

Explanation/Reference:

Explanation:

QUESTION 105

In an XIV System what is the proper and only way to provide application consistent data when remote mirroring across multiple XIV Systems?

- A. Each application source volume can be in multiple source systems.
 - B. Each application source volume must reside in the same source system.
 - C. The snapshot of the application consistency group can only be mirrored.
 - D. The application consistency group is in different pools and mirrored to remote sites.
- "Pass Any Exam. Any Time." - www.actualtests.com 38 IBM 000-957 Exam

Correct Answer: B

Section: (none)

Explanation

Explanation/Reference:

Explanation:

QUESTION 106

How many redundant paths from legacy storage to the XIV System are allowed while using the XIV migration tool?

- A. 4
- B. 3
- C. 2
- D. 1
- E. 0

Correct Answer: E

Section: (none)

Explanation

Explanation/Reference:

Explanation:

QUESTION 107

When using the XIV data migration tool how should the administrator reconfigure the LUN IDs?

- A. All LUN IDs must be letters only.
- B. NO LUN ID reconfiguration is required.
- C. All LUN IDs must be manually transferred.
- D. All LUN IDs must be different than the legacy storage LUN IDs.

Correct Answer: B

Section: (none)

Explanation

Explanation/Reference:

Explanation:

QUESTION 108

Which XCLI command is used to display the World Wide Port Names?

- A. wwpn_list
 - B. port_list
 - C. fc_port_list
 - D. componenet_list
- "Pass Any Exam. Any Time." - www.actualtests.com 39 IBM 000-957 Exam

Correct Answer: C

Section: (none)

Explanation

Explanation/Reference:

Explanation:

QUESTION 109

What is the primary purpose of assigning Application Administrators to an XIV User Group?

- A. Management of users who must manage the XIV System
- B. Management of users who work with the same applications
- C. Management of users who create and manage the same remote mirrors
- D. Management of users who have the same set of snapshot management responsibilities

Correct Answer: D

Section: (none)

Explanation

Explanation/Reference:

Explanation:

QUESTION 110

When connecting an IBM AIX server to the XIV Storage System, which multipath driver is recommended?

- A. IBM XIV DSM I/O mapper
- B. IBM Legacy Data Path Optimizer
- C. IBM default AIX Path Control Module
- D. IBM native AIX Gen-1 MPIO device driver

Correct Answer: C

Section: (none)

Explanation

Explanation/Reference:

Explanation:

QUESTION 111

The XIV Storage System utilizes multipath device drivers to avoid which common SAN issue?

- A. HBA buffer overflow
- B. single point of failure
- C. fibre channel hop count
- D. controller cache overflow

Correct Answer: B

Section: (none)

Explanation

Explanation/Reference:

"Pass Any Exam. Any Time." - www.actualtests.com 40 IBM 000-957 Exam

Explanation:

QUESTION 112

Use of the recommended XIV System multipath driver provides which benefit to the customer?

- A. Integrated with OS
- B. Increased I/O performance
- C. Increased HBA driver support
- D. Active/Active access to array controller

Correct Answer: A

Section: (none)

Explanation

Explanation/Reference:

Explanation:

QUESTION 113

What Microsoft VSS component is provided by the XIV software?

- A. Writer
- B. Requestor
- C. Hardware Provider
- D. Software Provider

Correct Answer: C

Section: (none)

Explanation

Explanation/Reference:

Explanation:

QUESTION 114

Which version of Symantec DMP Storage Foundation includes XIV ASL support?

- A. 4.0
- B. 4.1
- C. 50
- D. 5.1

Correct Answer: C

Section: (none)

Explanation

Explanation/Reference:

Explanation:

"Pass Any Exam. Any Time." - www.actualtests.com 41 IBM 000-957 Exam

QUESTION 115

In order to support Veritas Cluster XDRP in conjunction with the XIV System, where must the XCLI be installed?

- A. XIV master console
- B. XIV interface node
- C. each host within the cluster
- D. primary host within the cluster

Correct Answer: C

Section: (none)

Explanation

Explanation/Reference:

Explanation:

QUESTION 116

Due to the height, weight and power requirements of the XIV System, which IBM representative can be used to ensure facility requirements are adequate for the XIV System?

- A. IBM Technical Advisor (TA)
- B. IBM Corporate Systems Engineer (CSE)
- C. IBM Installation Planning Representative (IPR)
- D. IBM Advanced Technical Support Representative (ATS)

Correct Answer: C

Section: (none)

Explanation

Explanation/Reference:

Explanation:

QUESTION 117

Which two statements are true when planning for a mixed concurrent access from the same host to the same volumes through FC and iSCSI? (Select two)

- A. The XIV System always acts as a TCP client for iSCSI connections.
- B. FC switches should be configured (zoned) to block access from other hosts.
- C. Plan carefully to ensure load balancing and multiple paths exist for redundancy.
- D. Contact IBM XIV support if FC and iSCSI access must be configured from the same host.
- E. All hosts support multi-path configuration between the protocols so default values must be used.

Correct Answer: CD

Section: (none)

Explanation

Explanation/Reference:

Explanation:

QUESTION 118

During the installation of an XIV System the administrator would like the system to notify the administrator and management of errors. How does the XIV System accomplish this?

- A. IBM Service can dial into the system each hour. If events are not cleared, they can be regenerated out of the remaining working Data Modules and then page whoever is listed in the notification database.
- B. An event notification can be sent and an escalation rule and timer can be defined. If events that match this rule are not cleared before the timer expires, notifications are sent according to the escalation rule.
- C. When a major event notification is generated, it is sent directly to management via phone prior to the alert to the IBM Service Call Screening Center. Service personnel will then be dispatched to provide repair service.
- D. The XIV System can dial any designated number or numbers and provide a status update. This can be set to run every hour or every four hours. If there is no answer or busy signal, a text message can be sent to management.

Correct Answer: B

Section: (none)

Explanation

Explanation/Reference:

Explanation:

QUESTION 119

What are the key factors that determine overall cache to disk throughput?

- A. Cache size and data paths
- B. PCI bandwidth and disk size
- C. PCI bandwidth and number of drives
- D. Cache memory speed and number of modules

Correct Answer: C

Section: (none)

Explanation

Explanation/Reference:

Explanation:

QUESTION 120

"Pass Any Exam. Any Time." - www.actualtests.com 43 IBM 000-957 Exam

When a system is not at Full Redundancy, which feature allows the rebuild to occur with virtually no performance impact?

- A. Multiple parallel CPUs
- B. Data placement across all spindles
- C. Superior cache locality of reference
- D. Enhanced connectivity between modules

Correct Answer: B

Section: (none)

Explanation

Explanation/Reference:

Explanation:

QUESTION 121

Which action occurs when data placement is not optimal?

- A. Cache block sizes are changed
- B. Extra processing power is enabled
- C. Additional data paths are enabled
- D. Data distribution table is changed

Correct Answer: D

Section: (none)

Explanation

Explanation/Reference:

Explanation:

QUESTION 122

The performance of the XIV System is achieved by which attribute?

- A. specialized processors
- B. parallel access to disks
- C. innovative iSCSI host ports
- D. high-speed Ethernet connections

Correct Answer: B

Section: (none)

Explanation

Explanation/Reference:

Explanation:

QUESTION 123

Which two elements scale with capacity in XIV, but NOT in Hitachi USP-V? (Select two)

"Pass Any Exam. Any Time." - www.actualtests.com 44 IBM 000-957 Exam

- A. CPU resources
- B. Disk backup batteries
- C. Remote management ports
- D. Cache-to-disk bandwidth
- E. Number of available snapshots

Correct Answer: AD

Section: (none)

Explanation

Explanation/Reference:

Explanation:

QUESTION 124

Which feature is standard on the XIV Storage System, but requires the purchase of an additional software

license on the Hitachi USP-V?

- A. LUN management
- B. In-system replication
- C. Performance monitoring
- D. Tiered storage management

Correct Answer: B

Section: (none)

Explanation

Explanation/Reference:

Explanation:

QUESTION 125

Which feature of the XIV Storage System reduces the time to market for new technologies within the storage array and is not available in EMC Clariion series data arrays?

- A. Commodity hardware
- B. Modular components
- C. Increased scalability
- D. Automatic data migration

Correct Answer: A

Section: (none)

Explanation

Explanation/Reference:

Explanation:

QUESTION 126

Which performance problem often occurs in traditional mid-level arrays because of improper load balancing?

"Pass Any Exam. Any Time." - www.actualtests.com 45 IBM 000-957 Exam

- A. Hotspots
- B. Cache misses
- C. Orphaned space
- D. Volume resizing

Correct Answer: A

Section: (none)

Explanation

Explanation/Reference:

Explanation:

QUESTION 127

Which two advantages does the XIV System have over 3PAR offerings? (Select two)

- A. No backplane
- B. Data replication
- C. Commodity hardware
- D. iSCSI host connectivity
- E. Fibre Channel host connectivity

Correct Answer: AC

Section: (none)

Explanation

Explanation/Reference:

Explanation:

QUESTION 128

What advantage do XIV Storage System snapshots have over NetApp snapshots?

- A. The XIV System can take multiple snapshots of a single volume.
- B. The XIV System snapshots have reserved capacity in the storage pool.
- C. The XIV System snapshots have dedicated cache in the interface modules.
- D. The XIV System snapshot restore does NOT prevent any other snapshot restores.

Correct Answer: D

Section: (none)

Explanation

Explanation/Reference:



<http://www.gratisexam.com/>